

# V&V Reference Report

## L2 ASCDS Version : 8.5.1.1

Observation 5530 - L2 Version 3  
Chandra X-Ray Center

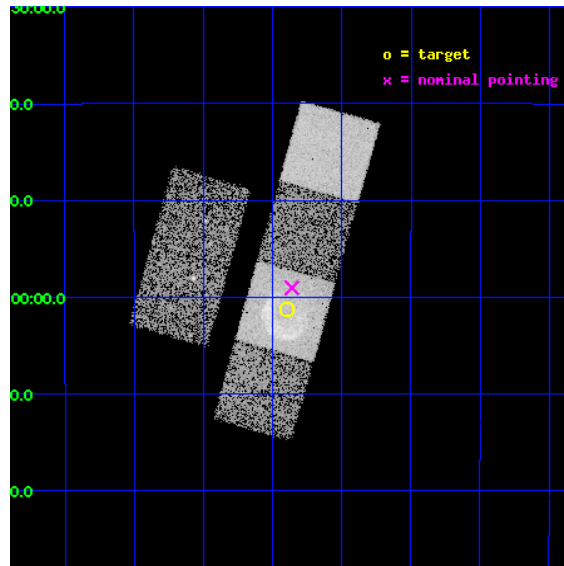
L2 Processing Date : Dec 23 2012

## Contents

<b>1</b>	<b>Front</b>	<b>2</b>
<b>2</b>	<b>OBI</b>	<b>3</b>
2.1	OBI . . . . .	3
2.1.1	Images . . . . .	3
2.1.2	Bias . . . . .	3
2.1.3	Parameters . . . . .	4
2.1.4	Events . . . . .	4
2.2	Compared Parameters . . . . .	5
2.3	Aspect . . . . .	6
2.4	Star Slots . . . . .	9
2.4.1	Slot 3 . . . . .	9
2.4.2	Slot 4 . . . . .	10
2.4.3	Slot 5 . . . . .	11
2.4.4	Slot 6 . . . . .	12
2.4.5	Slot 7 . . . . .	13
2.5	FID Slots . . . . .	14
2.5.1	Slot 0 . . . . .	14
2.5.2	Slot 1 . . . . .	15
2.5.3	Slot 2 . . . . .	16
<b>A</b>	<b>Summary</b>	<b>17</b>
A.1	Status . . . . .	17
A.2	Comments . . . . .	17

# 1 Front

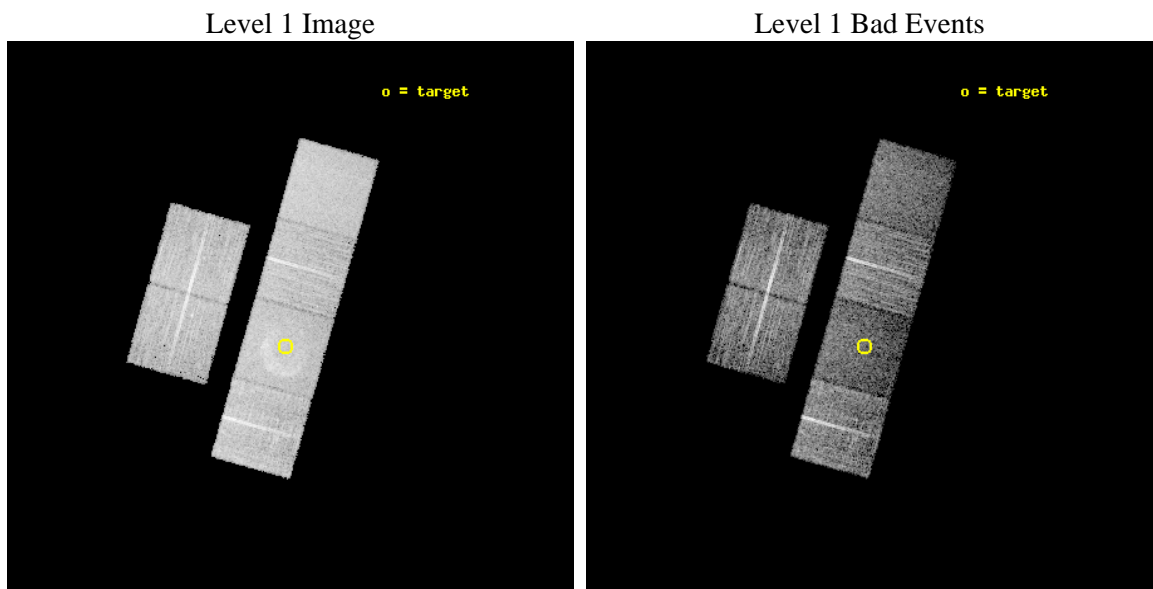
seq_num	500524	Sequence number
obs_id	5530	Observation id
title	Small-Diameter Galactic Supernova Remnants: The Missing Young Remnants?	Proposal title
observer	Dr. Stephen Reynolds	Principal investigator
object	G15.9+0.2	Source name
dtcycle	0	&#160
cycle	P	events from which exps? Prim/Second/Both
ra_targ	274.72375	Observer's specified target RA [deg]
dec_targ	-15.020556	Observer's specified target Dec [deg]
ra_nom	274.71498813379	Nominal RA [deg]
dec_nom	-14.98413353461	Nominal Dec [deg]
roll_nom	105.75438177788	Nominal Roll [deg]
revision	3	Processing version of data
ontime	9177.5999658108	Sum of GTIs [s]
livetime	9061.3876689564	Livetime [s]
ontime2	9177.5999658108	Sum of GTIs [s]
ontime3	9174.3589755297	Sum of GTIs [s]
ontime5	9177.5999658108	Sum of GTIs [s]
ontime6	9177.5999658108	Sum of GTIs [s]
ontime7	9177.5999658108	Sum of GTIs [s]
ontime8	9177.5999658108	Sum of GTIs [s]
l2events	83385	Number of level 2 events



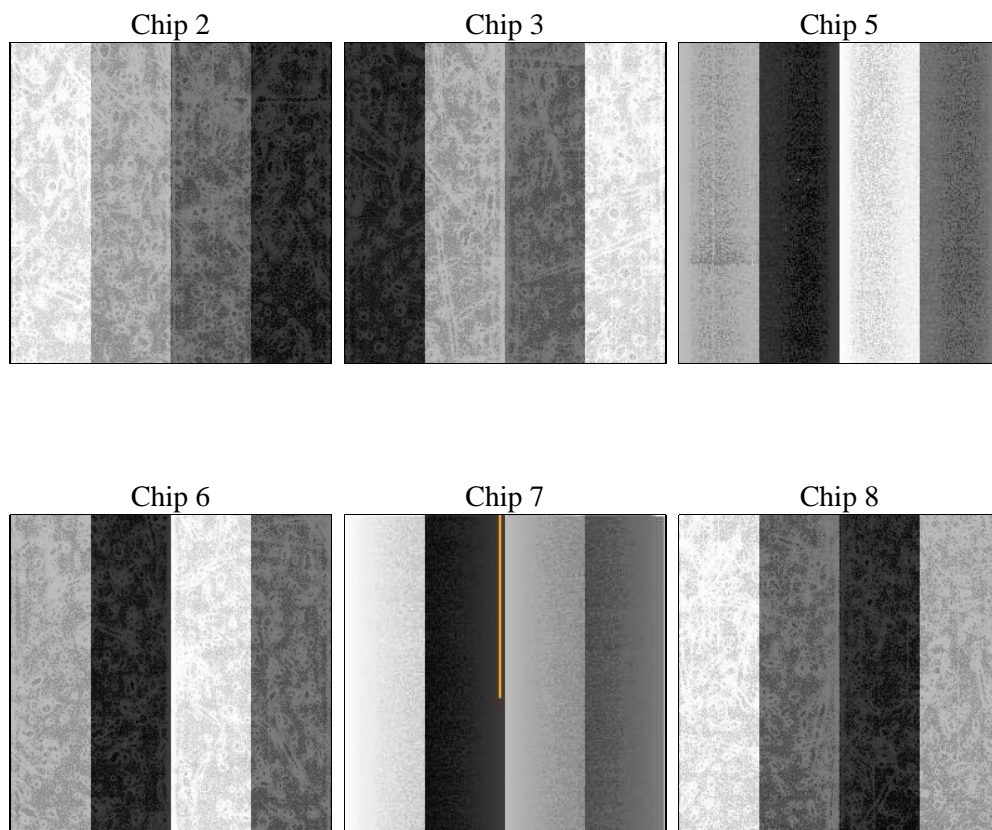
## 2 OBI

### 2.1 OBI

#### 2.1.1 Images



#### 2.1.2 Bias



### 2.1.3 Parameters

obi_num	0	Obi number	sched_exp_time	9000.000000	[s] Scheduled observation exposure time
ascdsver	8.5.1.1	Processing system revision	ontime	9177.5999658108	Sum of GTIs [s]
caldsver	4.5.5	&#160	ontime2	9177.5999658108	Sum of GTIs [s]
date	2012-12-23T17:57:02	Date and time of file creation	ontime3	9174.3589755297	Sum of GTIs [s]
revision	3	Processing version of data	ontime5	9177.5999658108	Sum of GTIs [s]
			ontime6	9177.5999658108	Sum of GTIs [s]
			ontime7	9177.5999658108	Sum of GTIs [s]
			ontime8	9177.5999658108	Sum of GTIs [s]
			l1events	339608	Number of level 1 events

### 2.1.4 Events

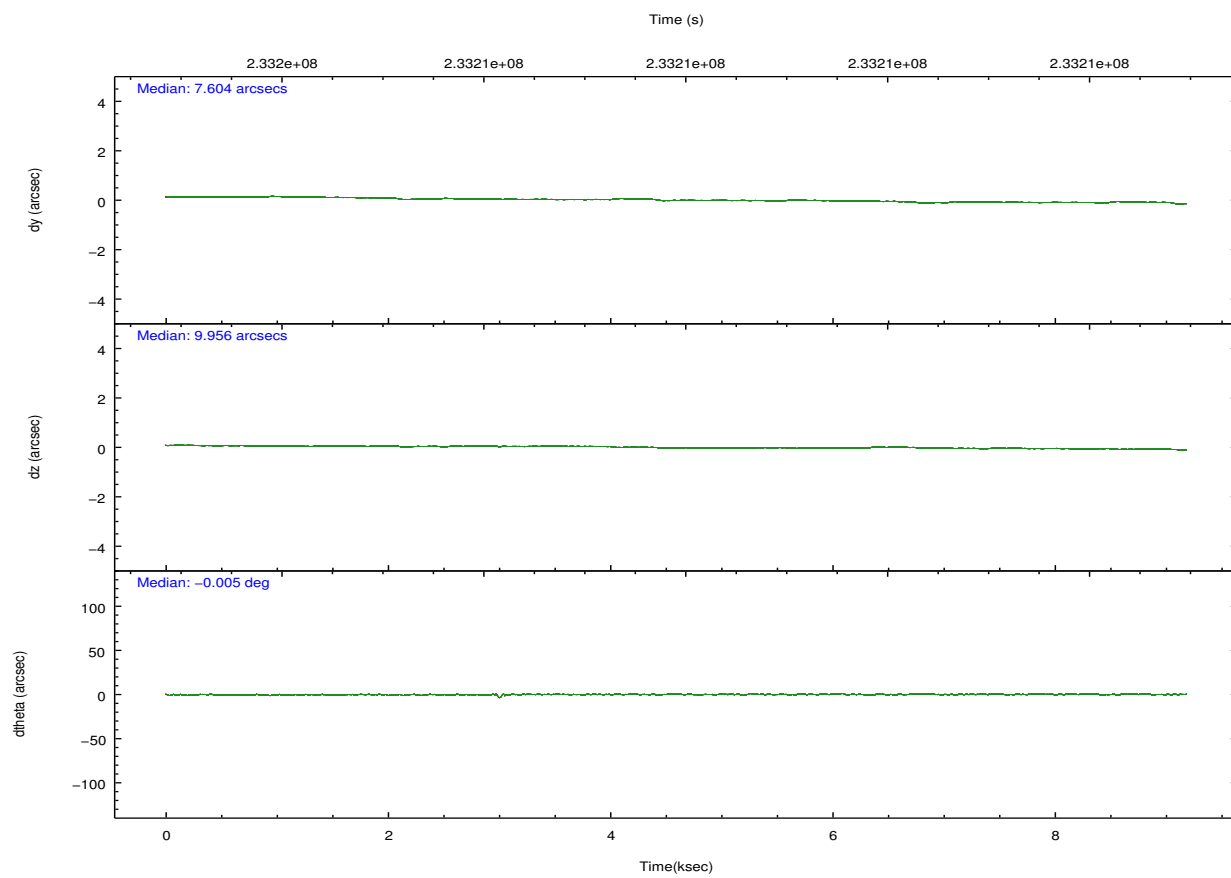
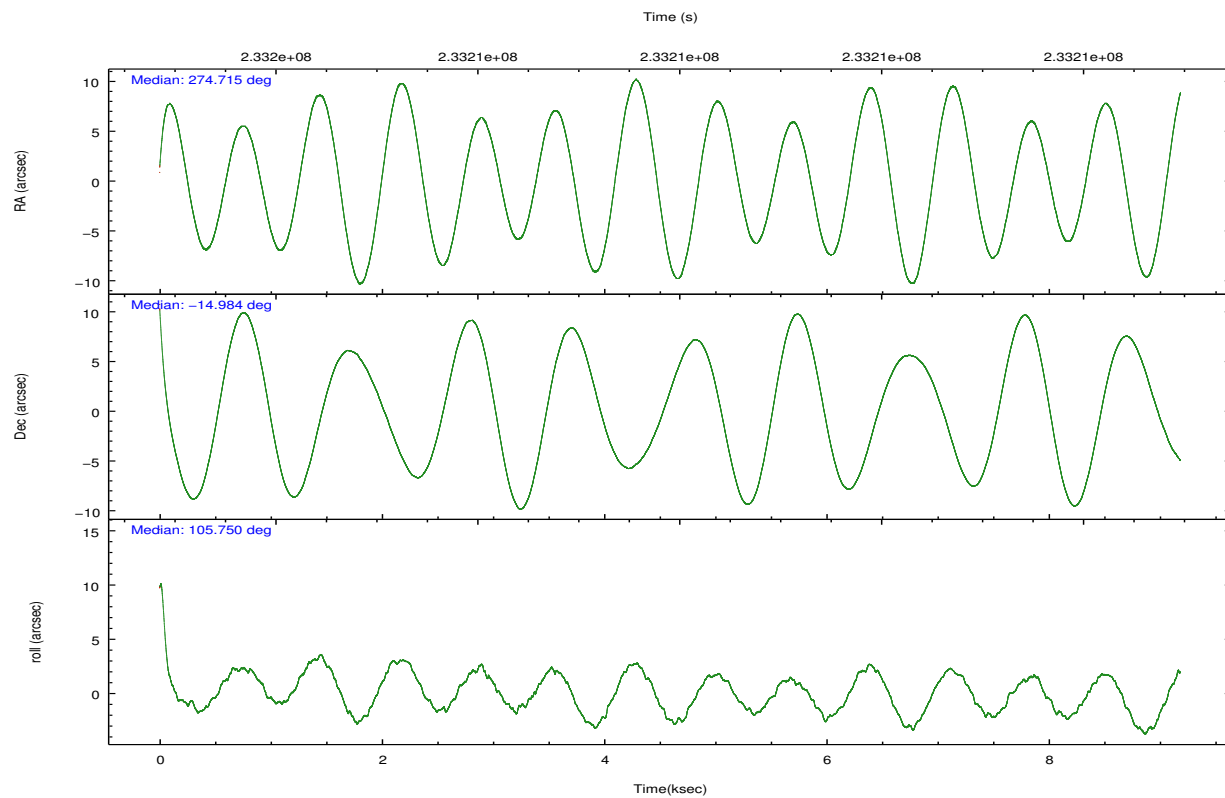
	ccd 2	ccd 3	ccd 5	ccd 6	ccd 7	ccd 8		ccd 2	ccd 3	ccd 5	ccd 6	ccd 7	ccd 8
level 1 events	55103	48388	62712	52782	61316	59307	grade 0 events	2355	2464	1694	2246	4169	2900
rejected events	49790	42812	32220	47191	28149	48668		4%	5%	2%	4%	6%	4%
rejected %	90%	88%	51%	89%	45%	82%	grade 1 events	26	31	27	19	45	28
								0%	0%	0%	0%	0%	0%
							grade 2 events	1067	1113	8898	1161	7107	2237
								1%	2%	14%	2%	11%	3%
							grade 3 events	498	524	1117	540	3224	1053
								0%	1%	1%	1%	5%	1%
							grade 4 events	481	498	1127	563	3308	941
								0%	1%	1%	1%	5%	1%
							grade 5 events	1584	1821	5116	1936	5661	2735
								2%	3%	8%	3%	9%	4%
							grade 6 events	942	1005	17835	1109	15535	3577
								1%	2%	28%	2%	25%	6%
							grade 7 events	48150	40932	26898	45208	22267	45836
								87%	84%	42%	85%	36%	77%



## 2.2 Compared Parameters

Parameter	Planned	Actual	Parameter	Planned	Actual
Instrument	ACIS	ACIS	Obspar format version number	7	7
Detector	ACIS-235678	ACIS-235678	Obspar file type	PREDICTED	ACTUAL
Grating	NONE	NONE	Obspar update status	NONE	UPDATED
Data mode	VFAINT	VFAINT	Number of optional ACIS chips dropped	0	0
Observation mode	POINTING	POINTING	On-chip summing requested	N	N
[deg] Pointing RA	274.735477	274.7149881337895	Subarray requested	NONE	NONE
[deg] Pointing Dec	-15.002863	-14.98413353461035	Alternating exposures requested	N	N
[deg] Pointing Roll	105.603030	105.7543817778823	[s] Primary exposure time	0.000000	3.2
[mm] SIM focus pos	-0.684267	-0.6828225247311905			
[mm] SIM defocus	0	0.001444936568705701			
[mm] SIM translation stage pos	-190.132523	-190.1400660498719			
[mm] SIM translation stage offset	0	0.00754346686406393			
[s] Observation start time (MET)	233203493.184000	233202399.28108			
Observation start date	2005-05-23T02:43:49	2005-05-23T02:26:39			
[s] Observation end time (MET)	233212493.184000	233213330.39407			
Observation end date	2005-05-23T05:13:49	2005-05-23T05:28:50			
Read mode	TIMED	TIMED			

## 2.3 Aspect

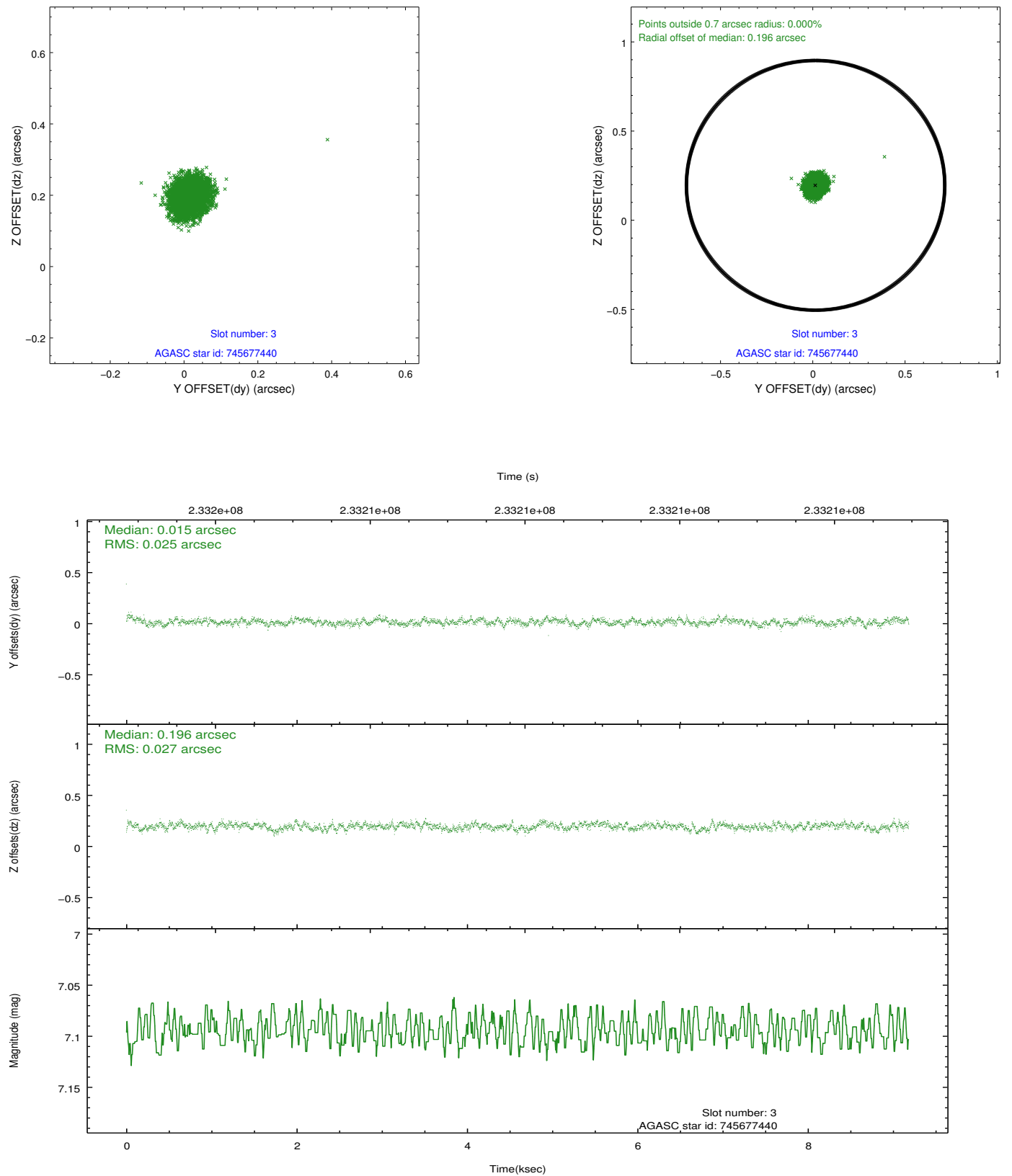


### Slot Statistics

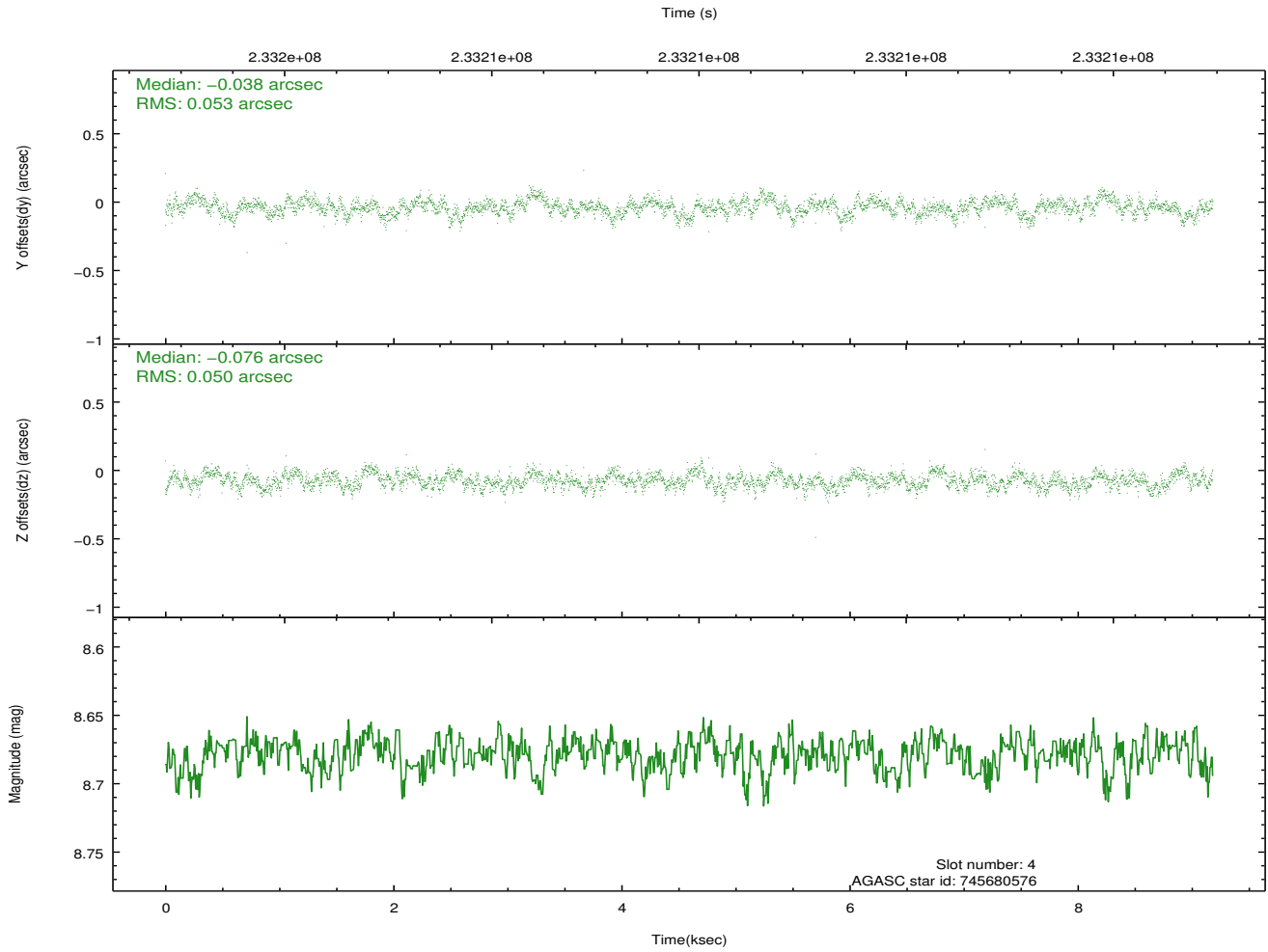
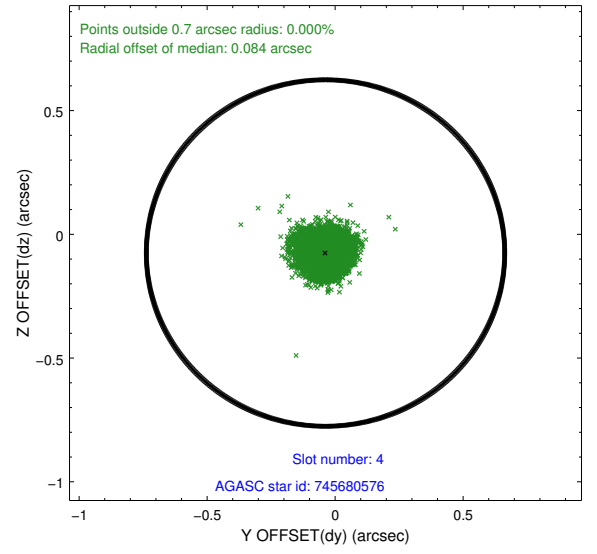
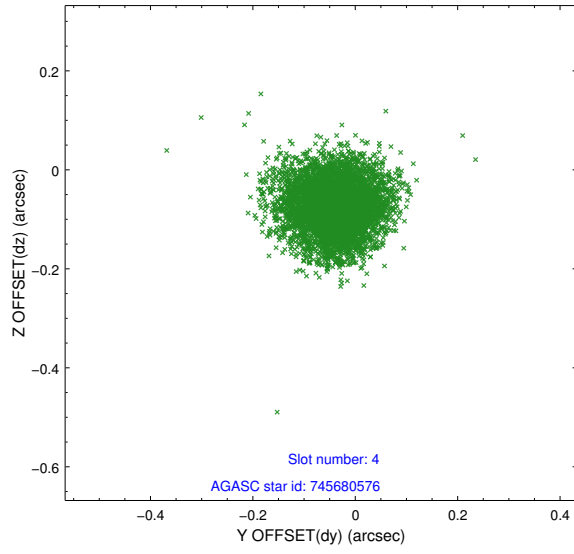
slot	status	id	mag	n_pts	med_dy	med_dz	dr1	dr2	ra	dec	mean_y	mean_z
0	FID	ACIS-S-2	7.10	2241	-0.045	-0.023	0.006	0.011	0.000000	0.000000	-760.38	-1731.25
1	FID	ACIS-S-4	7.21	2240	0.104	0.028	0.007	0.012	0.000000	0.000000	2152.73	176.75
2	FID	ACIS-S-5	7.23	2240	-0.090	0.004	0.009	0.015	0.000000	0.000000	-1812.55	170.97
3	GUIDE	745677440	7.09	4481	0.015	0.196	0.039	0.063	275.264510	-14.978543	-412.61	-1794.46
4	GUIDE	745680576	8.68	4478	-0.038	-0.076	0.077	0.122	274.063292	-14.644899	1867.43	1909.08
5	GUIDE	821172096	7.76	4480	0.050	0.133	0.051	0.080	275.077024	-15.219483	-1070.43	-932.21
6	GUIDE	821179256	7.40	4481	0.182	-0.004	0.049	0.075	274.840900	-15.612800	-2213.19	238.24
7	GUIDE	745679408	7.61	4479	-0.211	-0.249	0.059	0.092	274.073517	-14.949069	801.79	2166.30

## 2.4 Star Slots

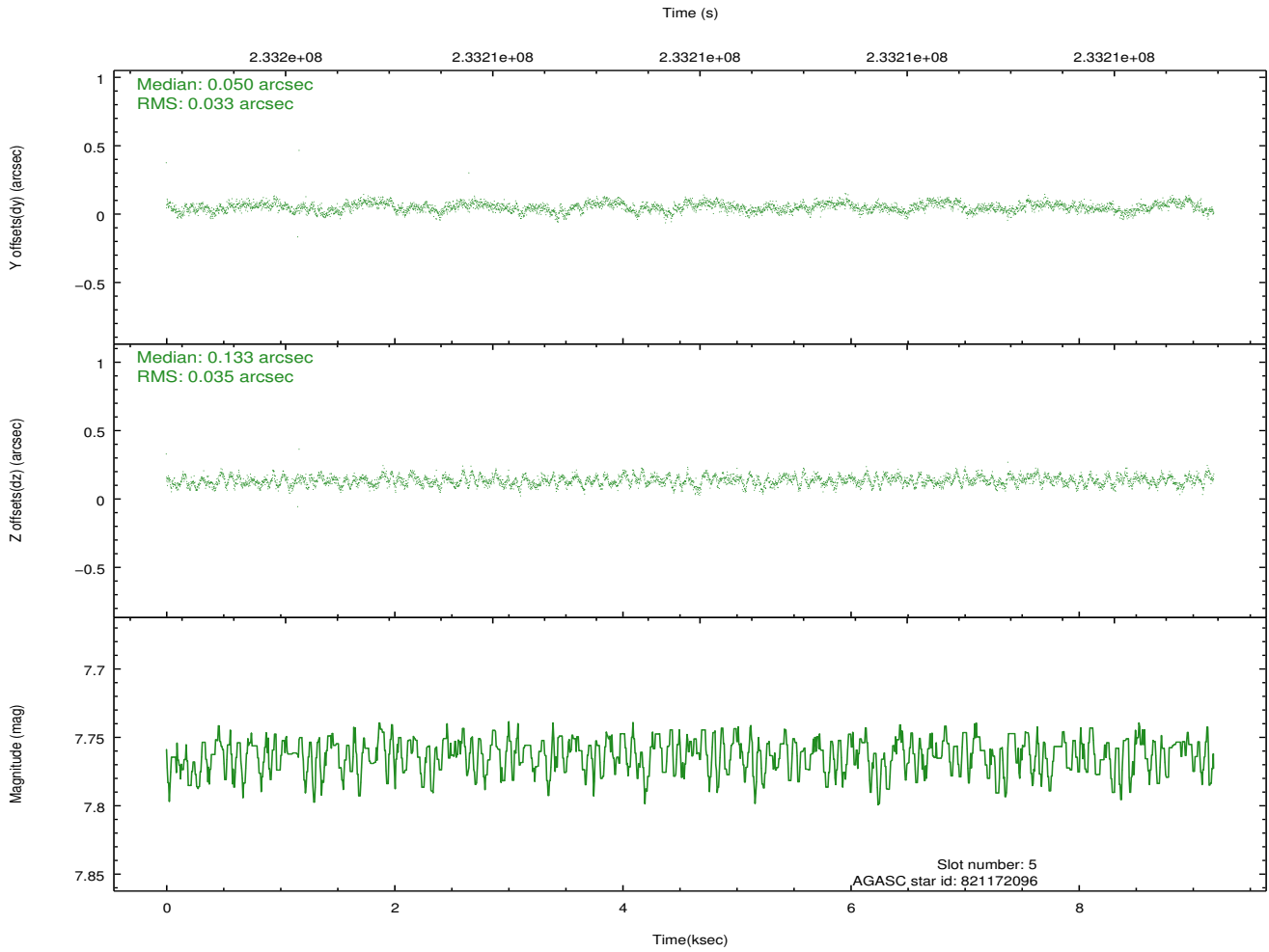
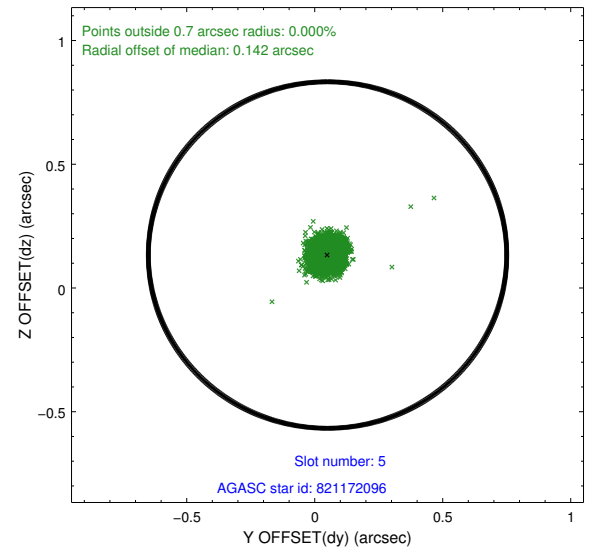
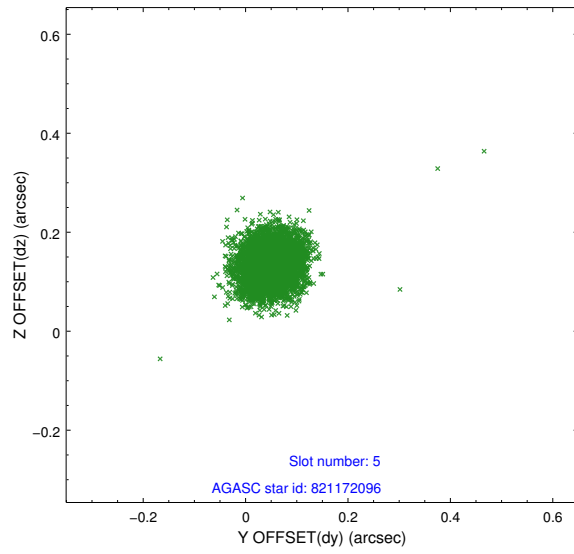
### 2.4.1 Slot 3



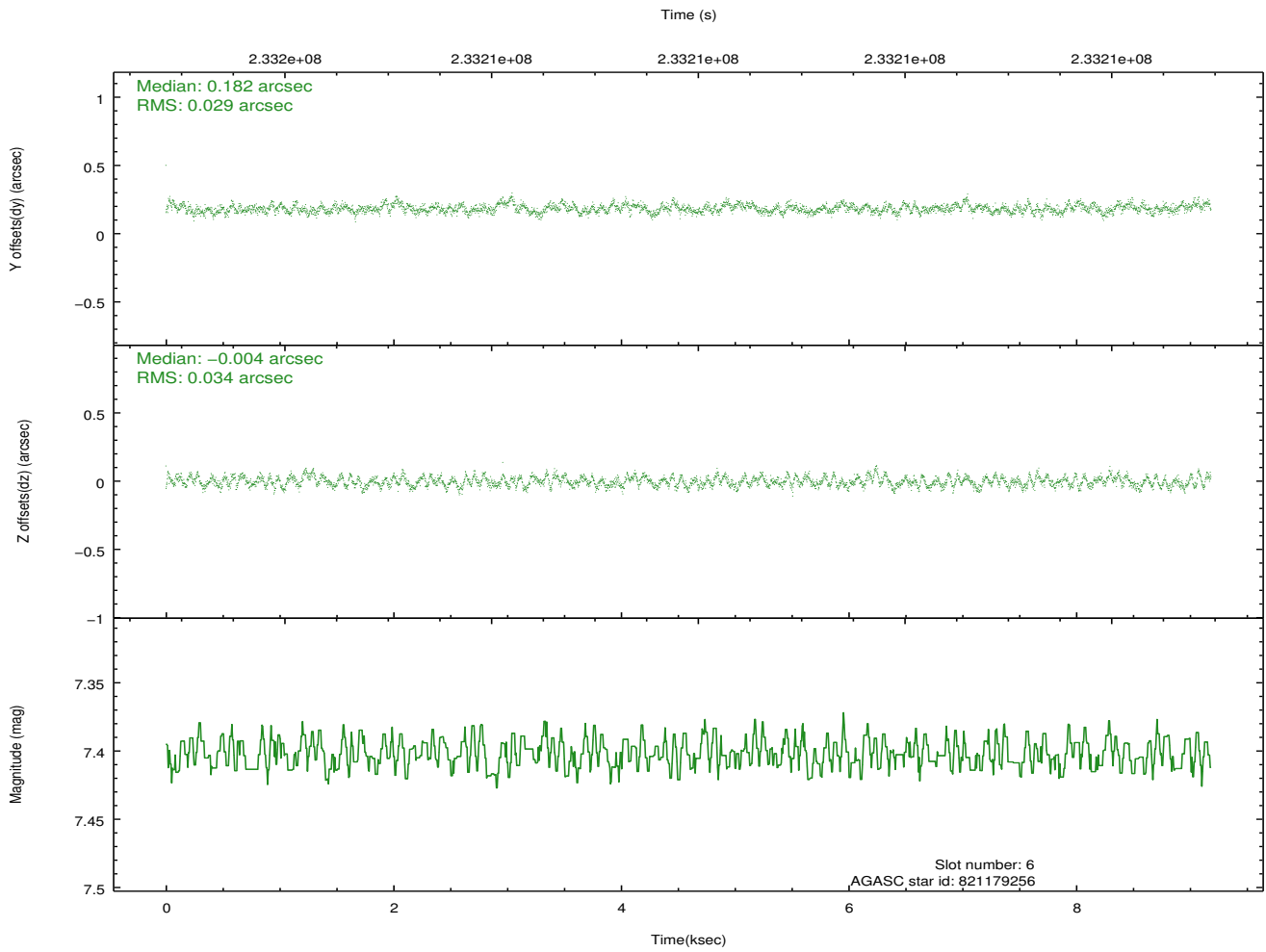
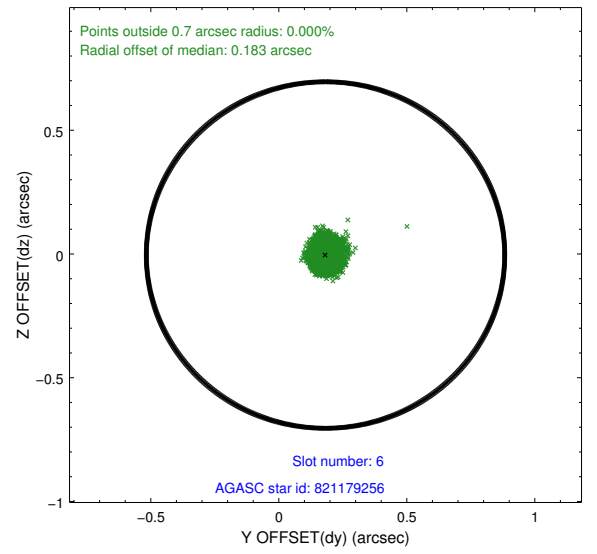
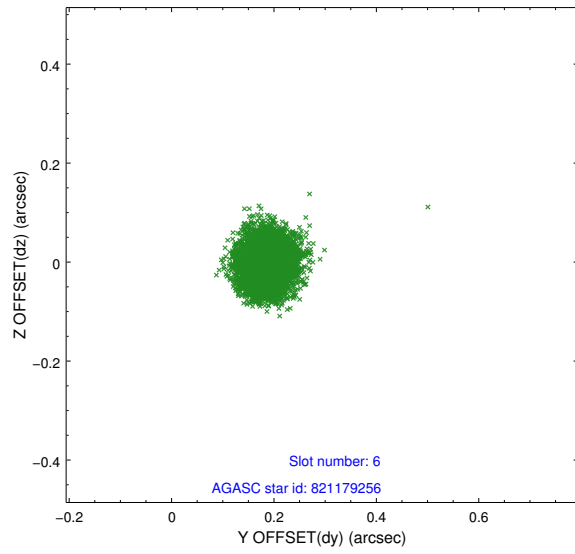
## 2.4.2 Slot 4



### 2.4.3 Slot 5

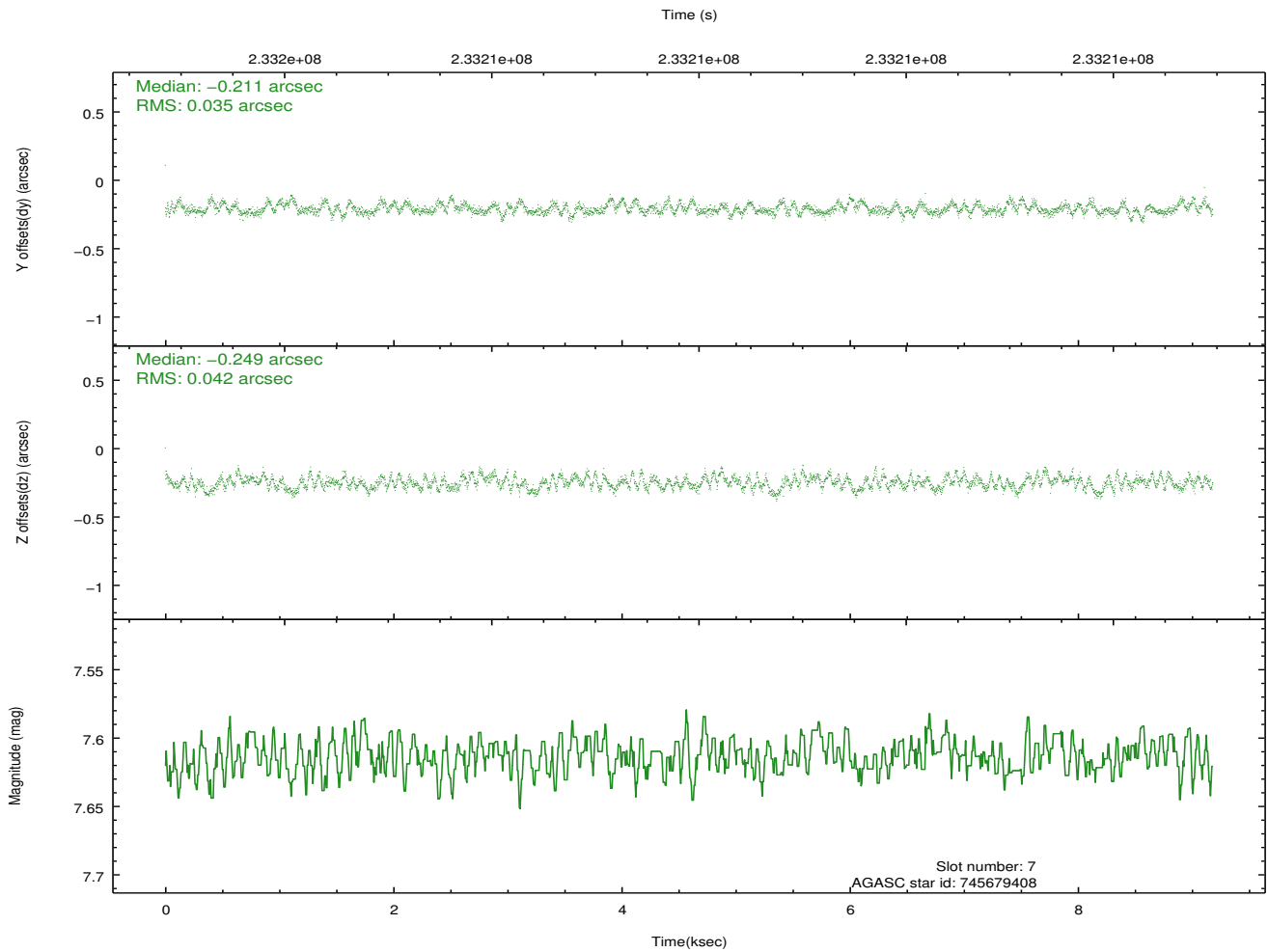
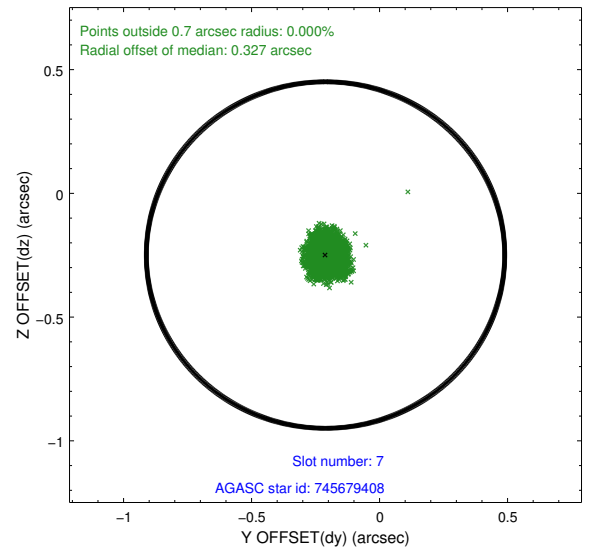
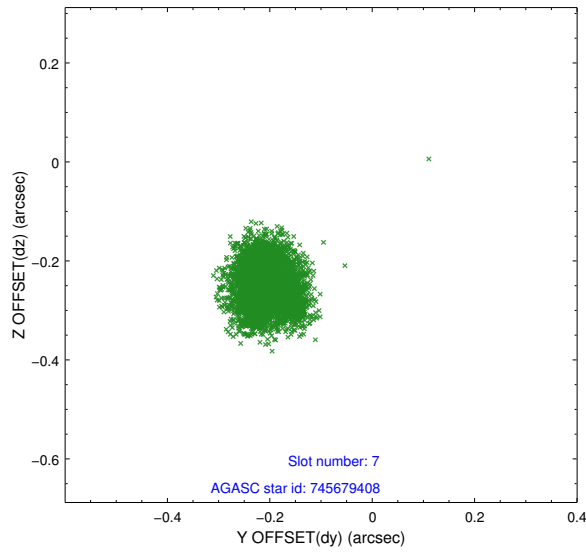


## 2.4.4 Slot 6



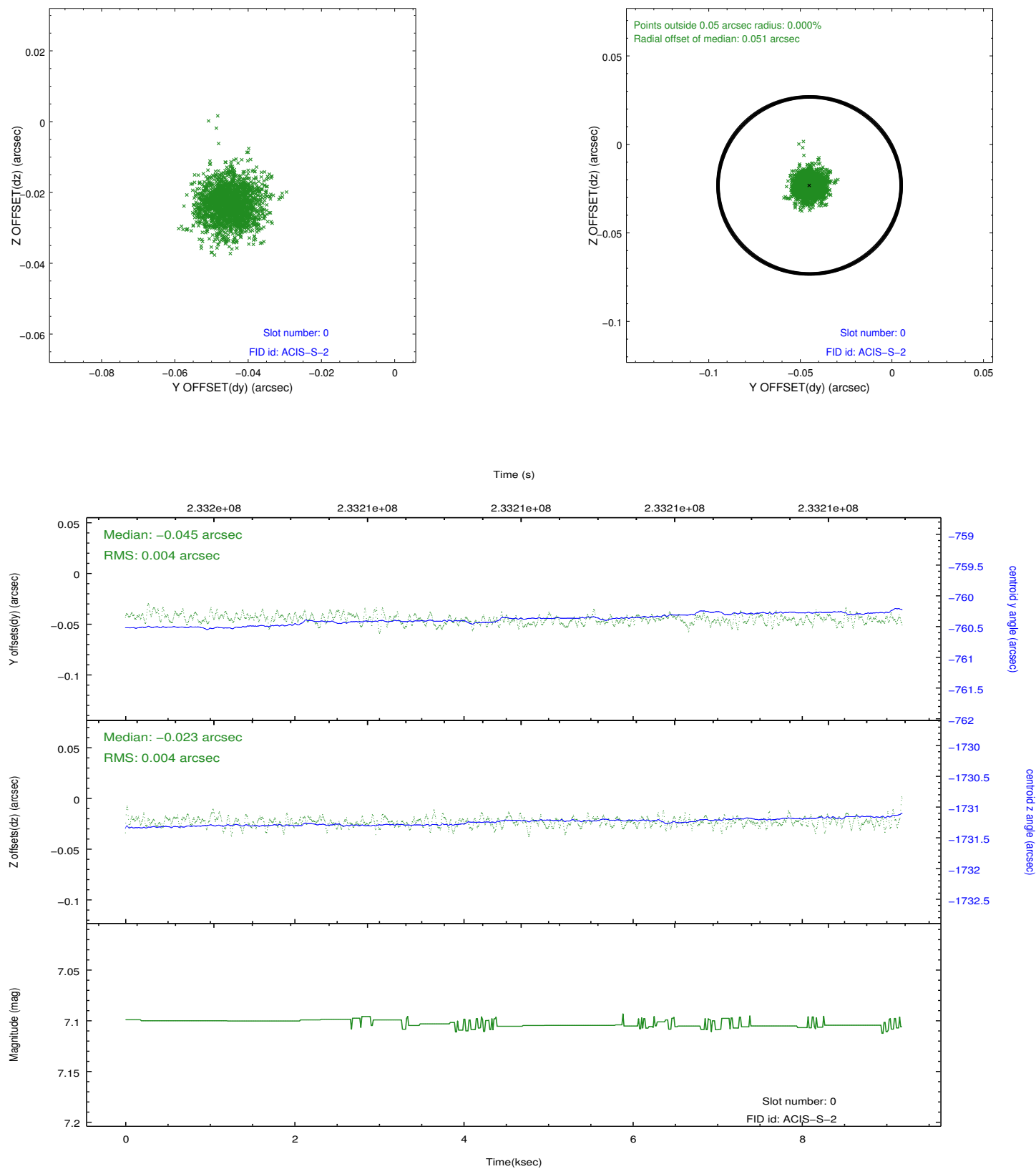


## 2.4.5 Slot 7

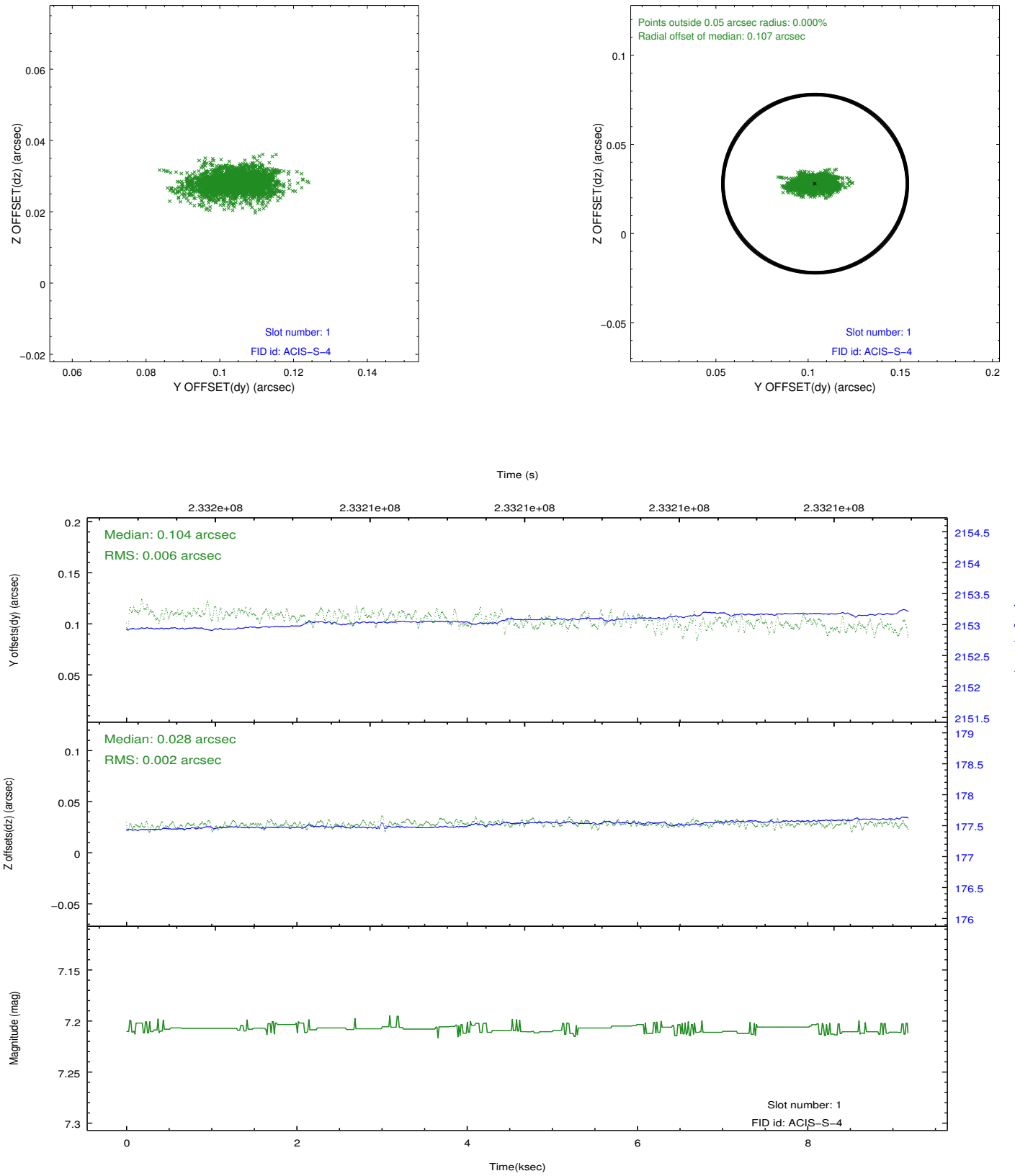


## 2.5 FID Slots

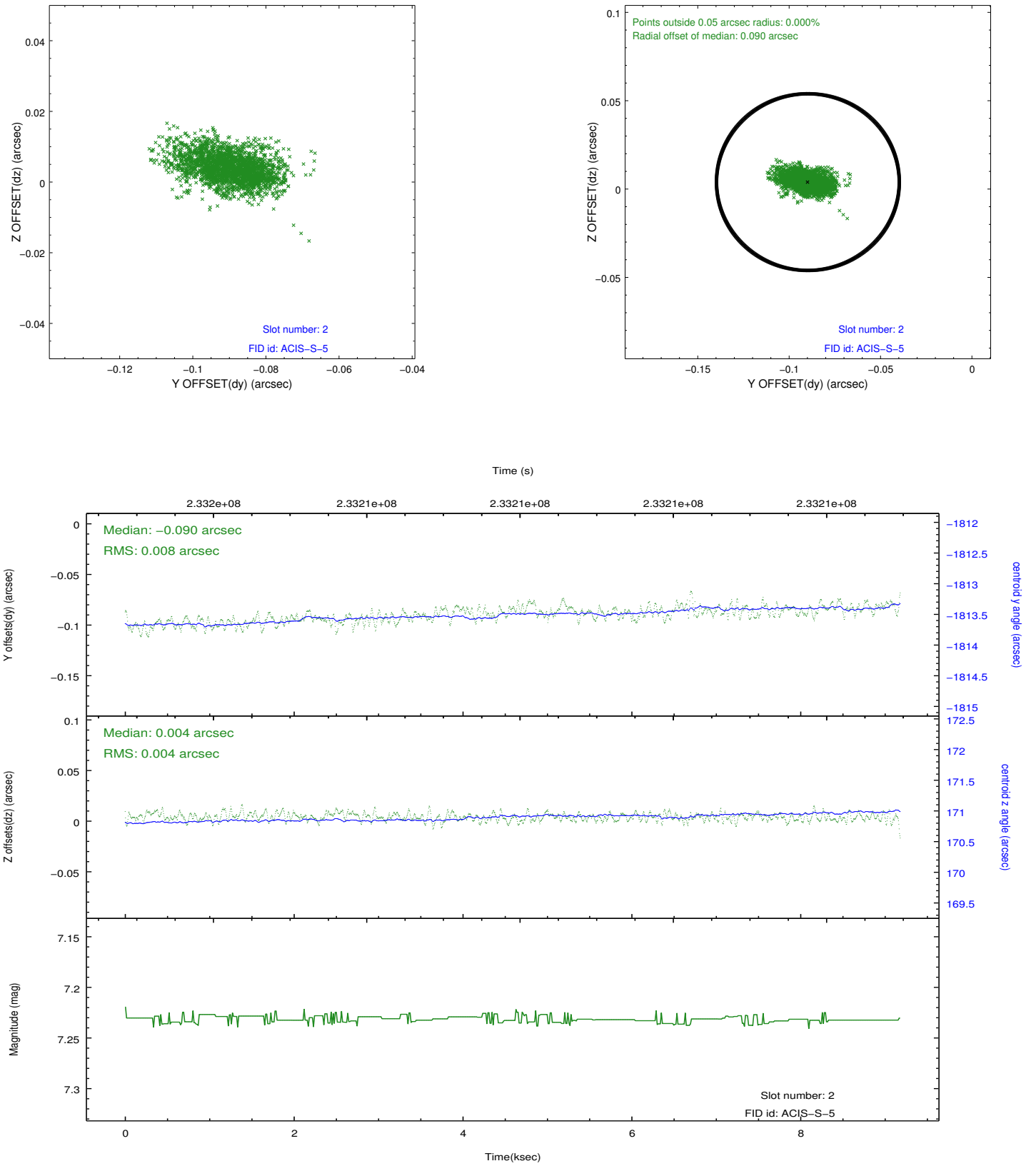
### 2.5.1 Slot 0



## 2.5.2 Slot 1



### 2.5.3 Slot 2



## A Summary

### A.1 Status

V&V Scientist	Jen Lauer
V&V Date (YYYY-MM-DD)	2013.01.16
V&V Edition	1
V&V Disposition and Status	OK
V&V Charge Time	9.177599

### A.2 Comments