

V&V Reference Report

L2 ASCDS Version : 8.4.3

Observation 55040 - L2 Version 2
Chandra X-Ray Center

L2 Processing Date : Feb 27 2012

Contents

1	Front	2
2	OBI	3
2.1	OBI	3
2.1.1	Images	3
2.1.2	Bias	3
2.1.3	Parameters	4
2.1.4	Events	4
2.2	Compared Parameters	5
2.3	Star Slots	6
2.4	FID Slots	6
A	Summary	7
A.1	Status	7
A.2	Comments	7

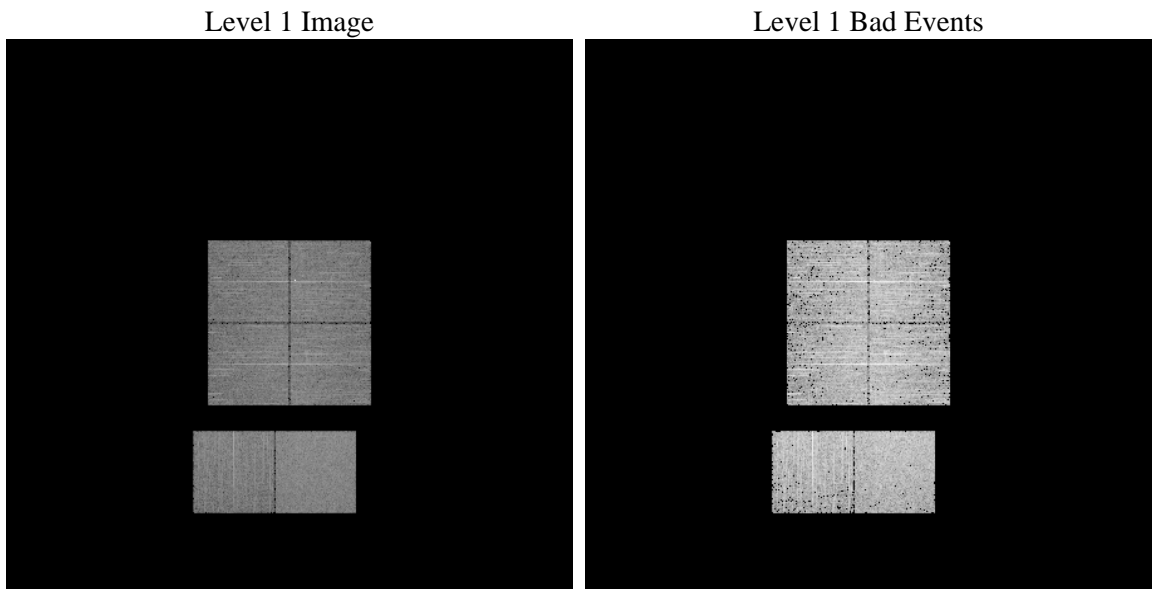
1 Front

seq_num	 	Sequence number
obs_id	55040	Observation id
title	ACIS-012367 diagnostics	Proposal title
observer	CHANDRA engineering request/realtime commanding	Principal investig
object	 	Source name
dtcycle	0	
cycle	P	events from which exps? Prim/Second/Both
ra_targ	0.0	Observer's specified target RA [deg]
dec_targ	0.0	Observer's specified target Dec [deg]
ra_nom	31.001778839457	Nominal RA [deg]
dec_nom	38.971183642618	Nominal Dec [deg]
roll_nom	239.61950042258	Nominal Roll [deg]
revision	2	Processing version of data
ontime	4131.1078301072	Sum of GTIs [s]
livetime	4078.7972553079	Livetime [s]
ontime0	4131.1488701105	Sum of GTIs [s]
ontime1	4131.1899101138	Sum of GTIs [s]
ontime2	4131.1999846697	Sum of GTIs [s]
ontime3	4131.0667901039	Sum of GTIs [s]
ontime6	4131.1999846697	Sum of GTIs [s]
ontime7	4131.1078301072	Sum of GTIs [s]
l2events	138456	Number of level 2 events

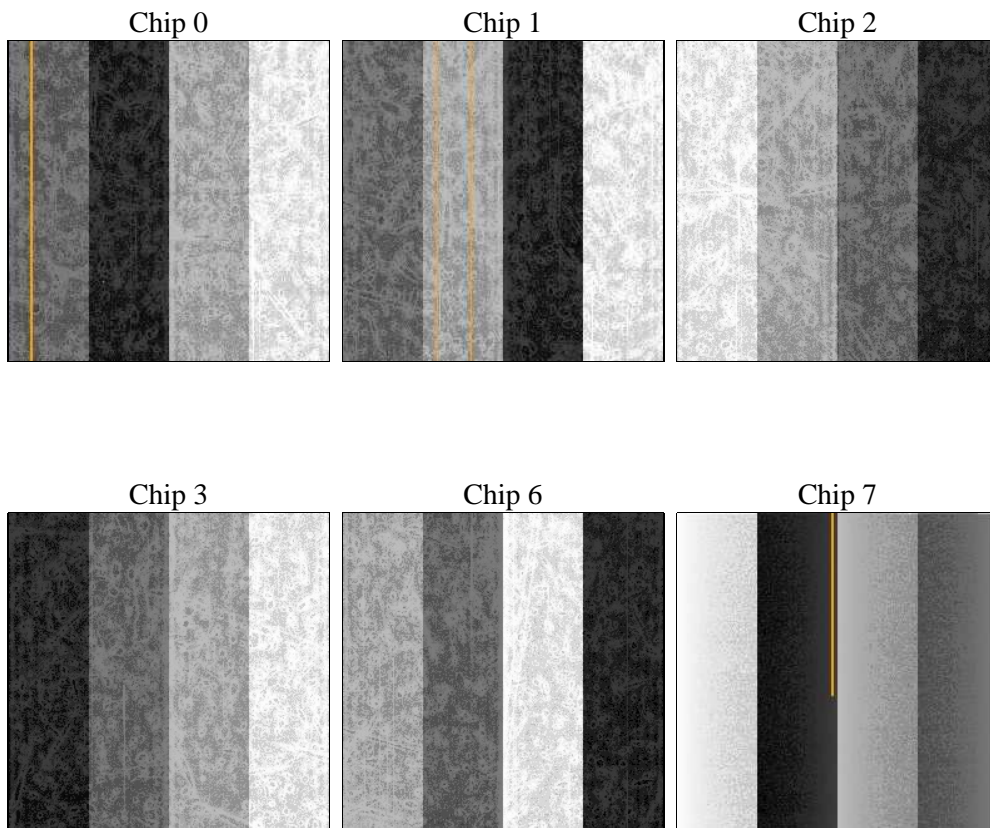
2 OBI

2.1 OBI

2.1.1 Images



2.1.2 Bias



2.1.3 Parameters

obi_num	1	Obi number	sched_exp_time	0.0	[s] Scheduled observation exposure time
ascdsver	8.4.3	Processing system revision	ontime	4131.1078301072	Sum of GTIs [s]
caldsver	4.4.8	 	ontime0	4131.1488701105	Sum of GTIs [s]
date	2012-02-27T12:25:12	Date and time of file creation	ontime1	4131.1899101138	Sum of GTIs [s]
revision	2	Processing version of data	ontime2	4131.1999846697	Sum of GTIs [s]
			ontime3	4131.0667901039	Sum of GTIs [s]
			ontime6	4131.1999846697	Sum of GTIs [s]
			ontime7	4131.1078301072	Sum of GTIs [s]
			l1events	316565	Number of level 1 events

2.1.4 Events

	ccd 0	ccd 1	ccd 2	ccd 3	ccd 6	ccd 7		ccd 0	ccd 1	ccd 2	ccd 3	ccd 6	ccd 7
level 1 events	47507	51190	49169	52446	51639	64614	grade 0 events	11287	12313	11932	11902	11311	5595
rejected events	25802	27654	27256	30425	28791	28859		23%	24%	24%	22%	21%	8%
rejected %	54%	54%	55%	58%	55%	44%	grade 1 events	72	66	76	71	56	42
								0%	0%	0%	0%	0%	0%
							grade 2 events	4010	4620	3686	3902	4592	7909
								8%	9%	7%	7%	8%	12%
							grade 3 events	1501	1522	1497	1493	1443	3005
								3%	2%	3%	2%	2%	4%
							grade 4 events	1450	1373	1494	1556	1457	3015
								3%	2%	3%	2%	2%	4%
							grade 5 events	1580	1638	1494	1847	1655	4370
								3%	3%	3%	3%	3%	6%
							grade 6 events	3457	3708	3304	3168	4045	16231
								7%	7%	6%	6%	7%	25%
							grade 7 events	24150	25950	25686	28507	27080	24447
								50%	50%	52%	54%	52%	37%

2.2 Compared Parameters

Parameter	Planned	Actual	Parameter	Planned	Actual
Instrument	ACIS	ACIS	Obspar format version number	7	7
Detector	ACIS-012367	ACIS-012367	Obspar file type	PREDICTED	ACTUAL
Grating	NONE	NONE	Obspar update status	NONE	UPDATED
Data mode	FAINT	FAINT	Number of optional ACIS chips dropped	0	0
Observation mode	SECONDARY	SECONDARY	On-chip summing requested	N	N
[deg] Pointing RA	0	31.00177883945727	Subarray requested	NONE	NONE
[deg] Pointing Dec	0	38.97118364261758	Alternating exposures requested	N	N
[deg] Pointing Roll	0.0	239.6195004225792	[s] Primary exposure time	3.2	3.2
[mm] SIM focus pos	-1.429586	-1.428180813131781			
[mm] SIM defocus	0.1037507710433287	0.1051558262725154			
[mm] SIM translation stage pos	250.455976	250.466033080201			
[mm] SIM translation stage offset	0	-0.01005468664627074			
[s] Observation start time (MET)	438430419.795012	438430418.76998			
Observation start date	2011-11-23T10:13:40	2011-11-23T10:13:38			
[s] Observation end time (MET)	438446032.595836	438446031.5708			
Observation end date	2011-11-23T14:33:53	2011-11-23T14:33:51			
Read mode	TIMED	TIMED			

2.3 Star Slots

2.4 FID Slots

A Summary

A.1 Status

V&V Scientist	Beth Sundheim
V&V Date (YYYY-MM-DD)	2012.02.27
V&V Edition	1
V&V Disposition and Status	OK
V&V Charge Time	4.1311078301072

A.2 Comments