

V&V Reference Report

L2 ASCDS Version : 7.6.7.1

Observation 5370 - L2 Version 002
Chandra X-Ray Center

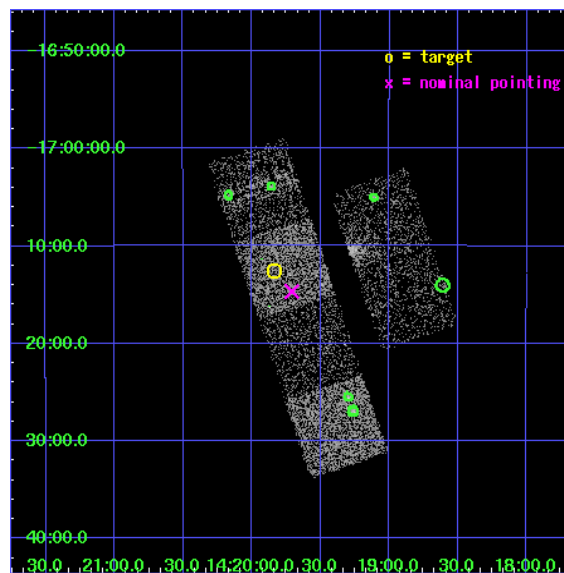
L2 Processing Date : Mar 15 2006

Contents

1	Front	2
2	OBI	3
2.1	OBI	3
2.1.1	Images	3
2.1.2	Bias	3
2.1.3	Parameters	4
2.1.4	Events	4
2.2	Compared Parameters	5
2.3	Aspect	6
2.4	Star Slots	9
2.4.1	Slot 3	9
2.4.2	Slot 4	10
2.4.3	Slot 5	11
2.4.4	Slot 6	12
2.4.5	Slot 7	13
2.5	FID Slots	14
2.5.1	Slot 0	14
2.5.2	Slot 1	15
2.5.3	Slot 2	16
3	Point Sources	17
A	Summary	18
A.1	Status	18
A.2	Comments	18

1 Front

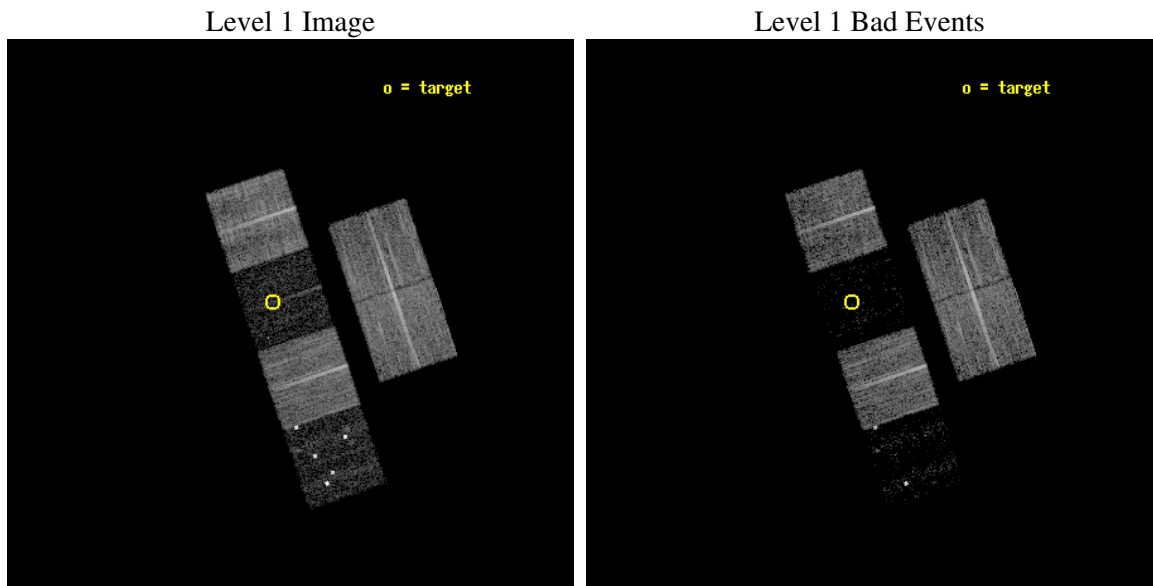
seq_num	100058
obs_id	5370
title	Comet 9P/Tempel 1 During the Deep Impact Encounter
observer	Dr. Carey Lisse
object	9P/Tempel 1
dtcycle	0
cycle	P
ra_targ	214.959791
dec_targ	-17.20983
ra_nom	214.92723105079
dec_nom	-17.244603954209
roll_nom	251.4877018201
revision	2
ontime	9260.7999655008
livetime	9143.5341401534
ontime2	9260.7999655008
ontime3	9260.7999655008
ontime5	9260.7999655008
ontime6	9260.7999655008
ontime7	9260.7999655008
ontime8	9257.5589952171
l2events	14143



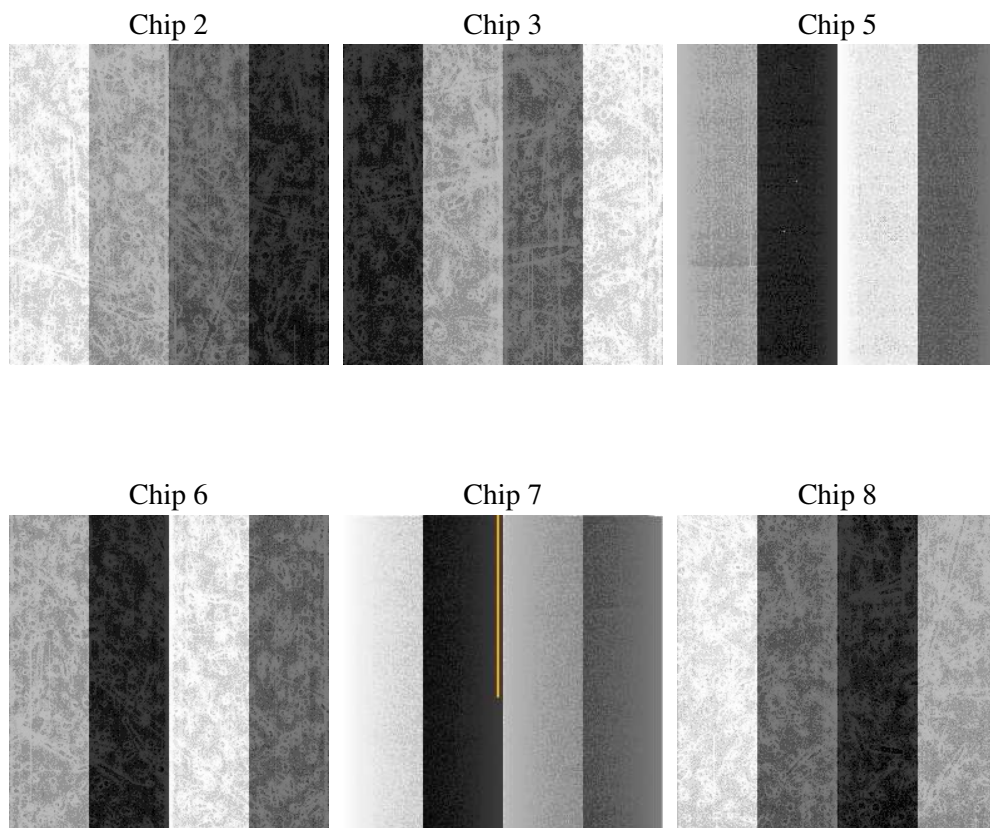
2 OBI

2.1 OBI

2.1.1 Images



2.1.2 Bias



2.1.3 Parameters

obi_num	0
ascdsver	7.6.7.1
caldsver	3.2.1
date	2006-03-15T17:04:19
revision	2

sched_exp_time	9300.000000
ontime	9395.6761603355
ontime2	9395.6761603355
ontime3	9392.4351502061
ontime5	9392.4351701438
ontime6	9392.4351502061
ontime7	9395.6761603355
ontime8	9389.1941998601
l1events	198298

2.1.4 Events

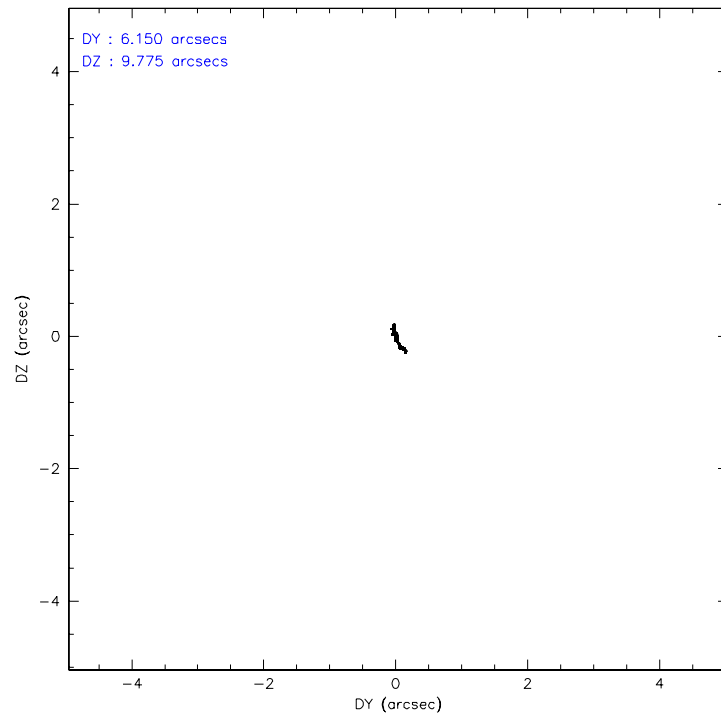
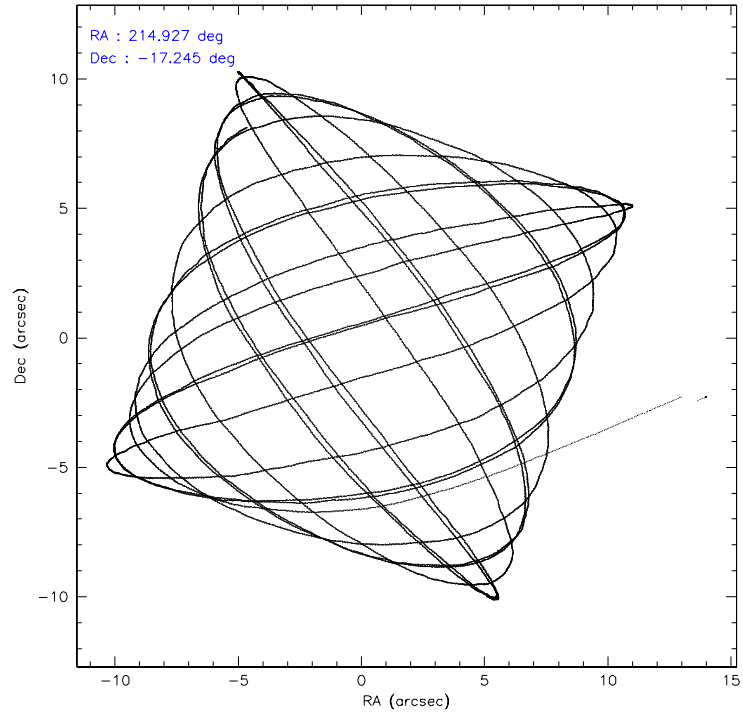
	ccd 2	ccd 3	ccd 5	ccd 6	ccd 7	ccd 8
level 1 events	47039	41165	17631	40287	5724	46452
rejected events	45051	39237	4070	38516	1152	35357
rejected %	95%	95%	23%	95%	20%	76%

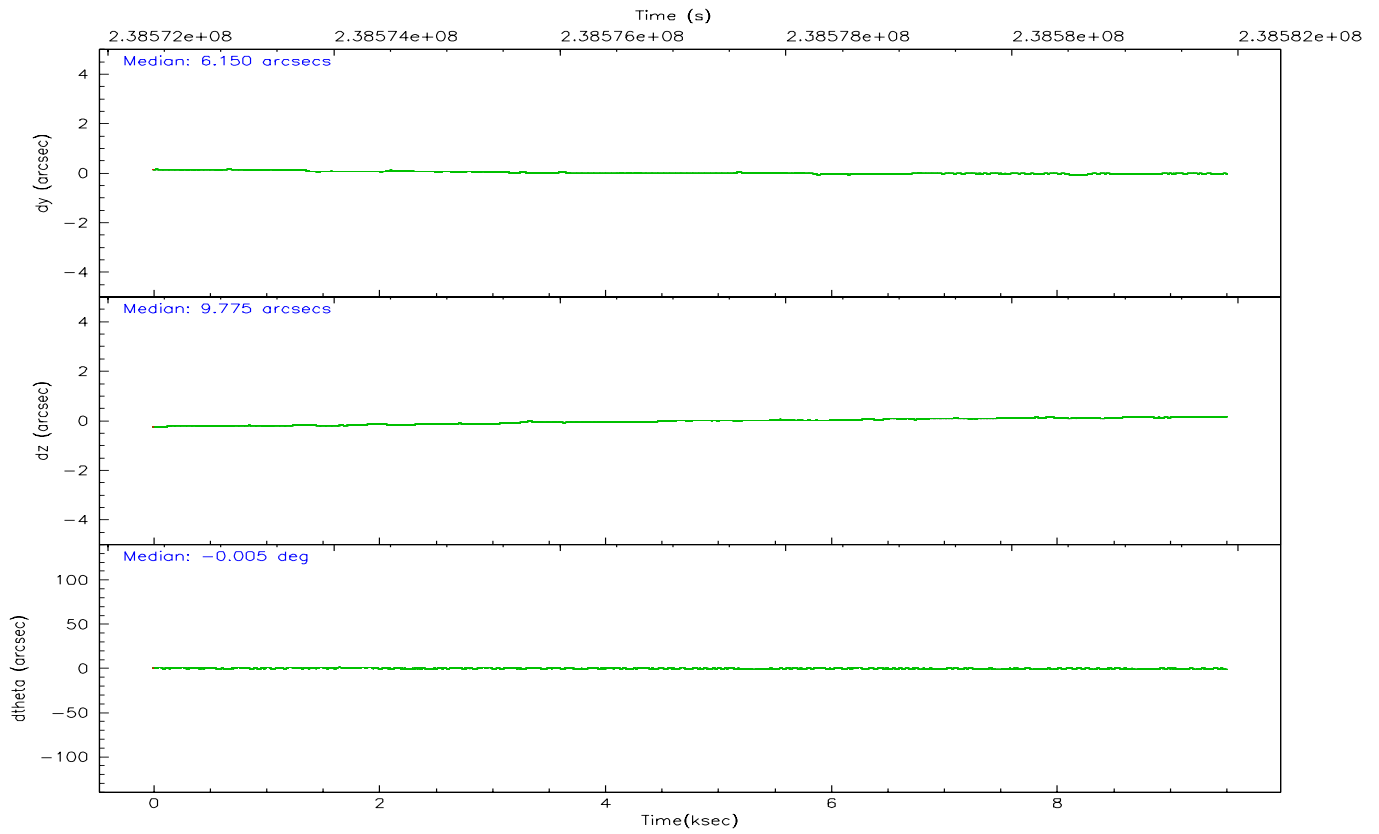
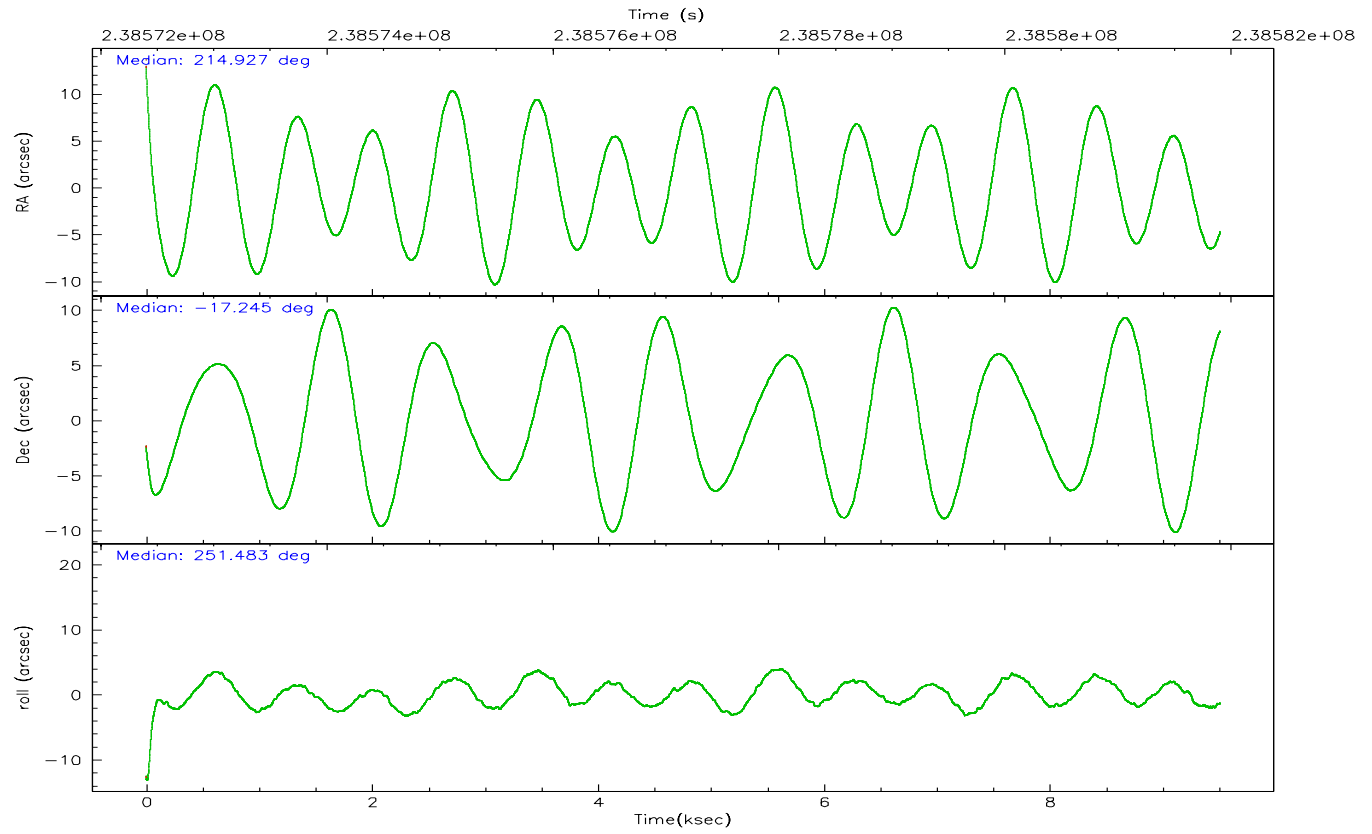
	ccd 2	ccd 3	ccd 5	ccd 6	ccd 7	ccd 8
grade 0 events	872	1125	7706	861	1115	3027
	1%	2%	43%	2%	19%	6%
grade 1 events	16	11	1534	13	27	26
	0%	0%	8%	0%	0%	0%
grade 2 events	413	230	3463	323	1593	2635
	0%	0%	19%	0%	27%	5%
grade 3 events	248	243	928	270	705	1209
	0%	0%	5%	0%	12%	2%
grade 4 events	306	213	922	229	644	1084
	0%	0%	5%	0%	11%	2%
grade 5 events	62	31	645	50	122	239
	0%	0%	3%	0%	2%	0%
grade 6 events	189	137	726	116	576	3276
	0%	0%	4%	0%	10%	7%
grade 7 events	44933	39175	1707	38425	942	34956
	95%	95%	9%	95%	16%	75%

2.2 Compared Parameters

Parameter	Planned	Actual	Parameter	Planned	Actual
Instrument	ACIS	ACIS	Obspar format version number	6	6
Detector	ACIS-235678	ACIS-235678	Obspar file type	PREDICTED	ACTUAL
Grating	NONE	NONE	Obspar update status	NONE	UPDATED
Data mode	VFAINT	VFAINT	On-chip summing requested	N	N
Observation mode	POINTING	POINTING	Subarray requested	NONE	NONE
Pointing RA	214.921200	214.9272310507931	Alternating exposures requested	N	N
Pointing Dec	-17.217979	-17.24460395420922	Primary exposure time	0.000000	3.2
Pointing Roll	251.329319	251.4877018200964			
Window start time	238572064.184000	238572064.184000			
Window stop time	238615264.184000	238615264.184000			
SIM focus pos (mm)	-0.684267	-0.6828225247311905			
SIM defocus (mm)	0	0.001444936568705701			
SIM translation stage pos (mm)	-190.132523	-190.1400660498719			
SIM translation stage offset (mm)	0	0.00754346686406393			
Observation start time	238572603.184000	238571629.35137			
Observation start date	2005-07-24T06:08:59	2005-07-24T05:53:49			
Observation end time	238581903.184000	238582037.20184			
Observation end date	2005-07-24T08:43:59	2005-07-24T08:47:17			
Read mode	TIMED	TIMED			

2.3 Aspect



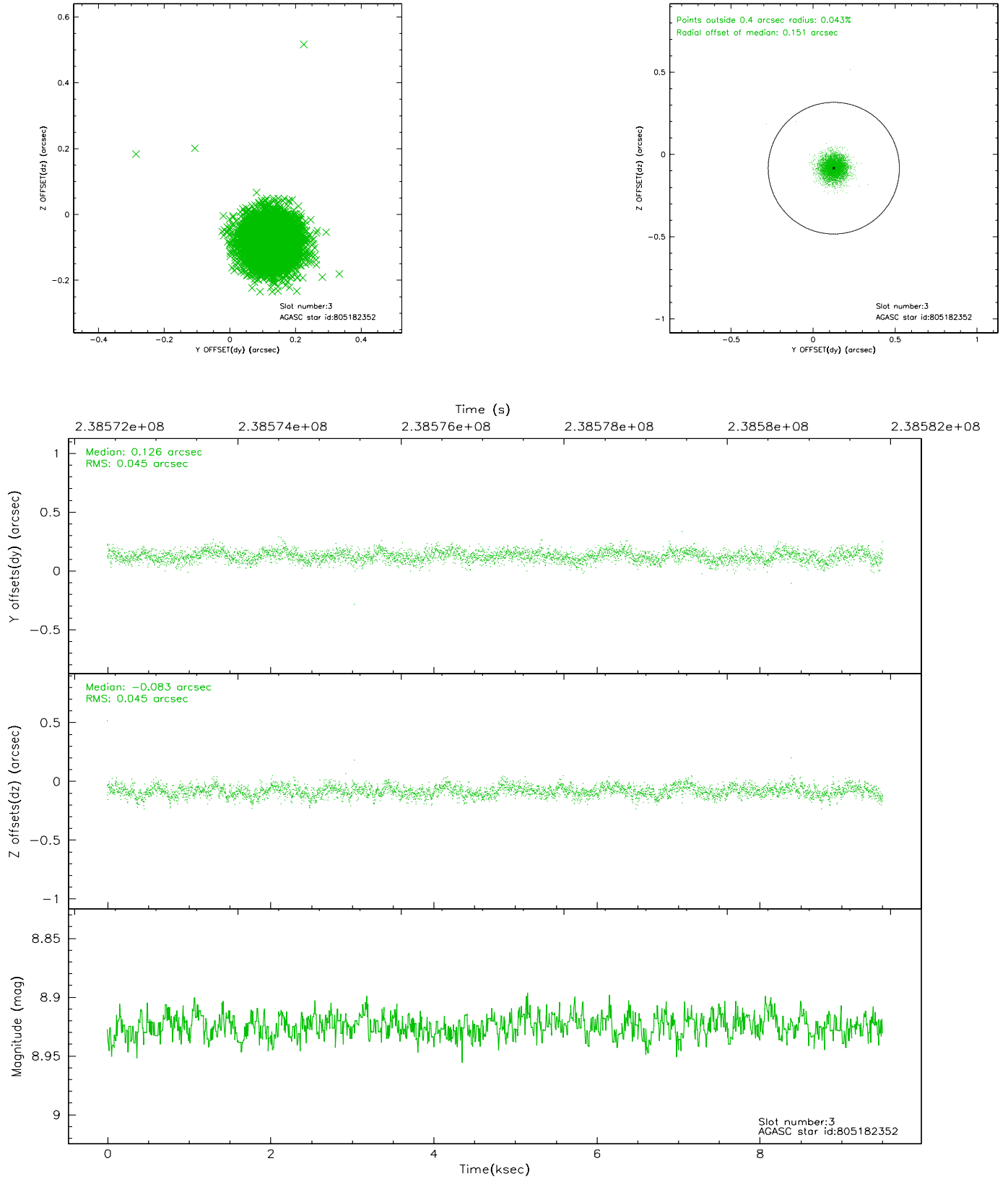


Slot Statistics

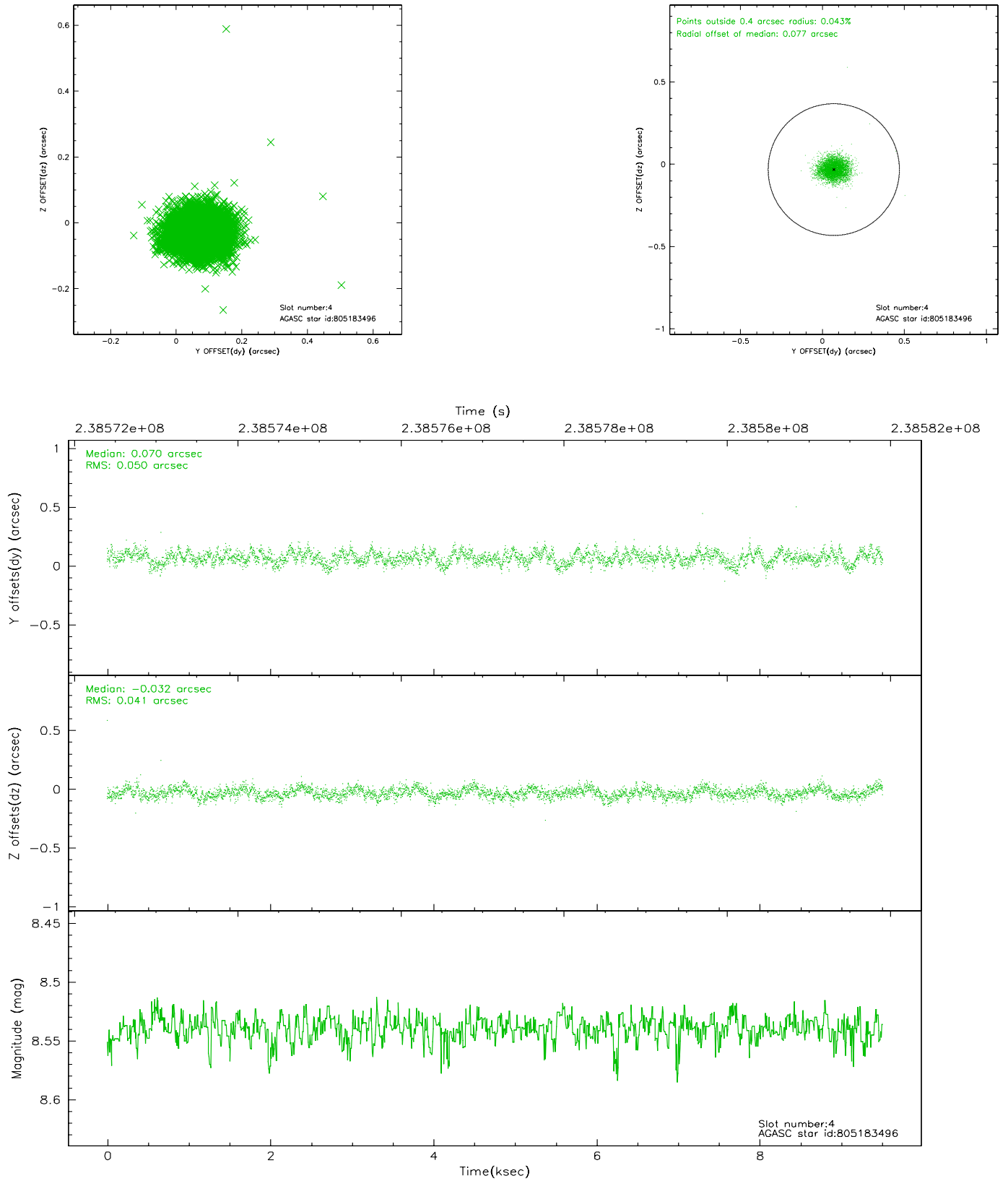
slot	status	id	mag	n_pts	med_dy	med_dz	dr1	dr2	ra	dec	mean_y	mean_z
0	FID	ACIS-S-2	7.10	2320	-0.056	-0.010	0.007	0.011	0.000000	0.000000	-758.93	-1731.01
1	FID	ACIS-S-4	7.21	2320	0.066	0.030	0.005	0.010	0.000000	0.000000	2154.18	176.97
2	FID	ACIS-S-5	7.23	2319	-0.042	-0.011	0.006	0.011	0.000000	0.000000	-1811.06	171.18
3	GUIDE	805182352	8.92	4635	0.126	-0.083	0.067	0.107	214.624580	-17.686015	1922.95	-424.02
4	GUIDE	805183496	8.54	4638	0.070	-0.032	0.067	0.108	214.568748	-17.733891	2148.25	-550.18
5	GUIDE	805185120	8.61	4563	-0.025	-0.014	0.063	0.102	215.253528	-17.793163	1598.37	1742.53
6	GUIDE	805187072	8.73	4579	-0.092	0.042	0.064	0.103	215.513645	-17.149952	-881.21	1853.69
7	GUIDE	805188160	8.97	4632	-0.078	0.088	0.067	0.111	215.356854	-16.987214	-1265.92	1156.07

2.4 Star Slots

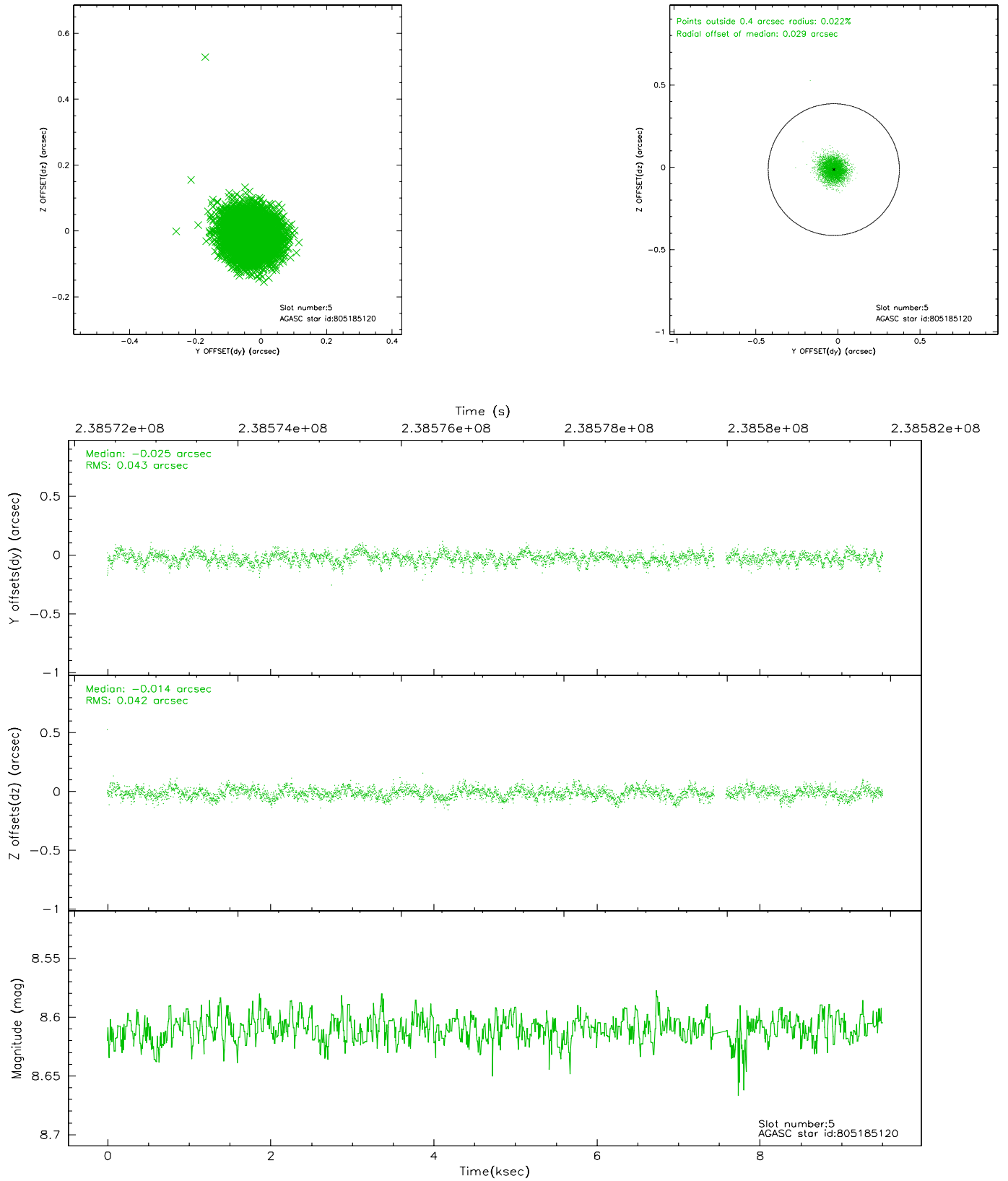
2.4.1 Slot 3



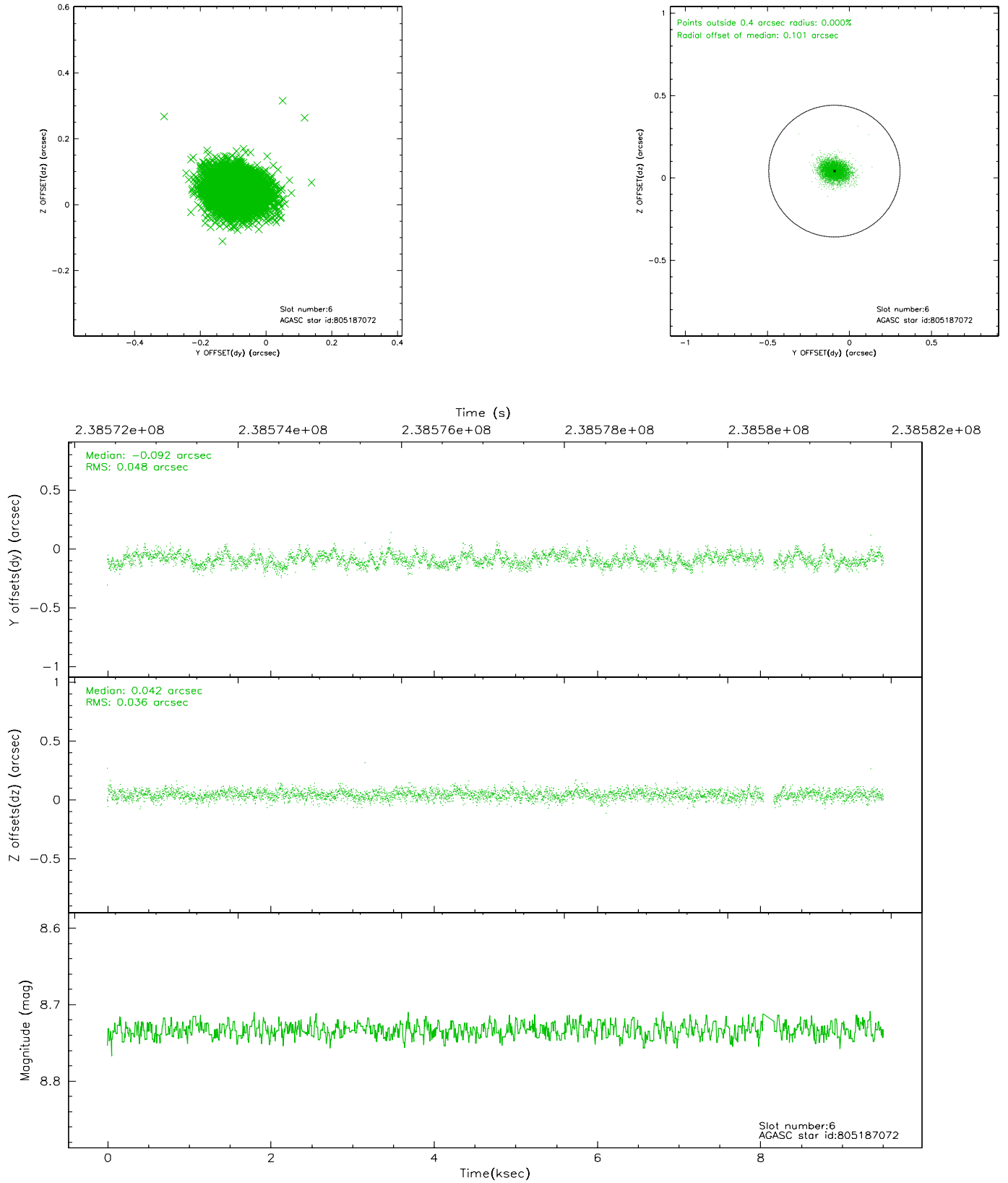
2.4.2 Slot 4



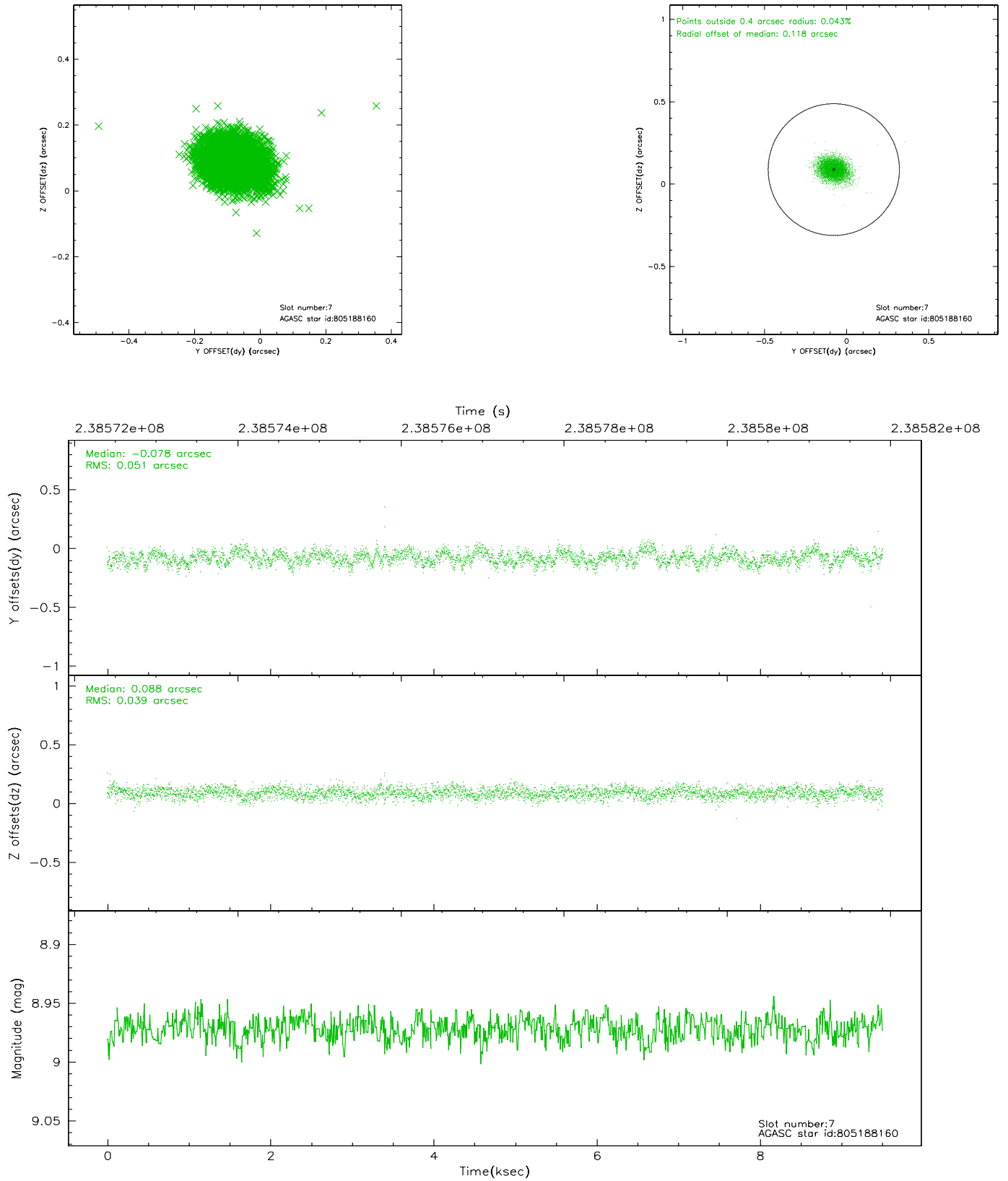
2.4.3 Slot 5



2.4.4 Slot 6

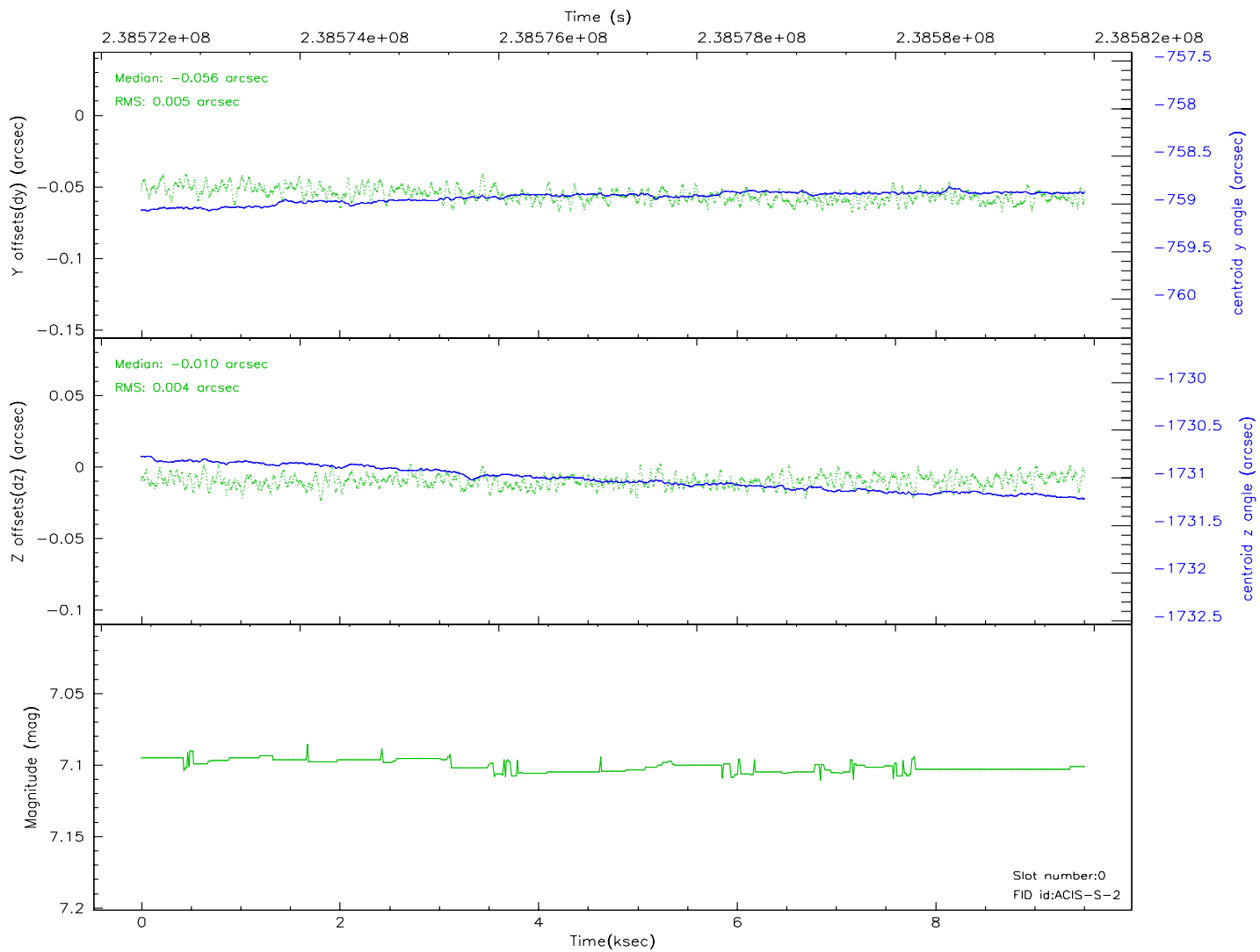
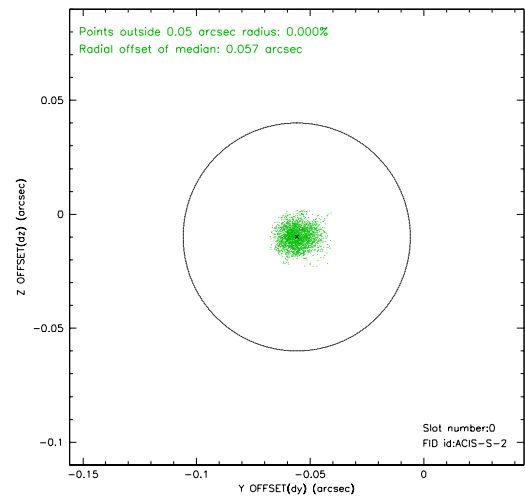
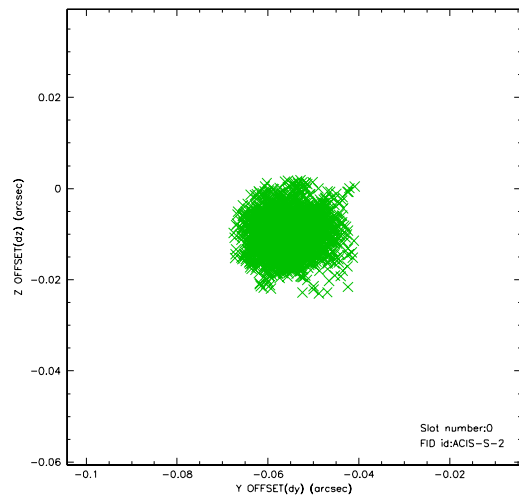


2.4.5 Slot 7

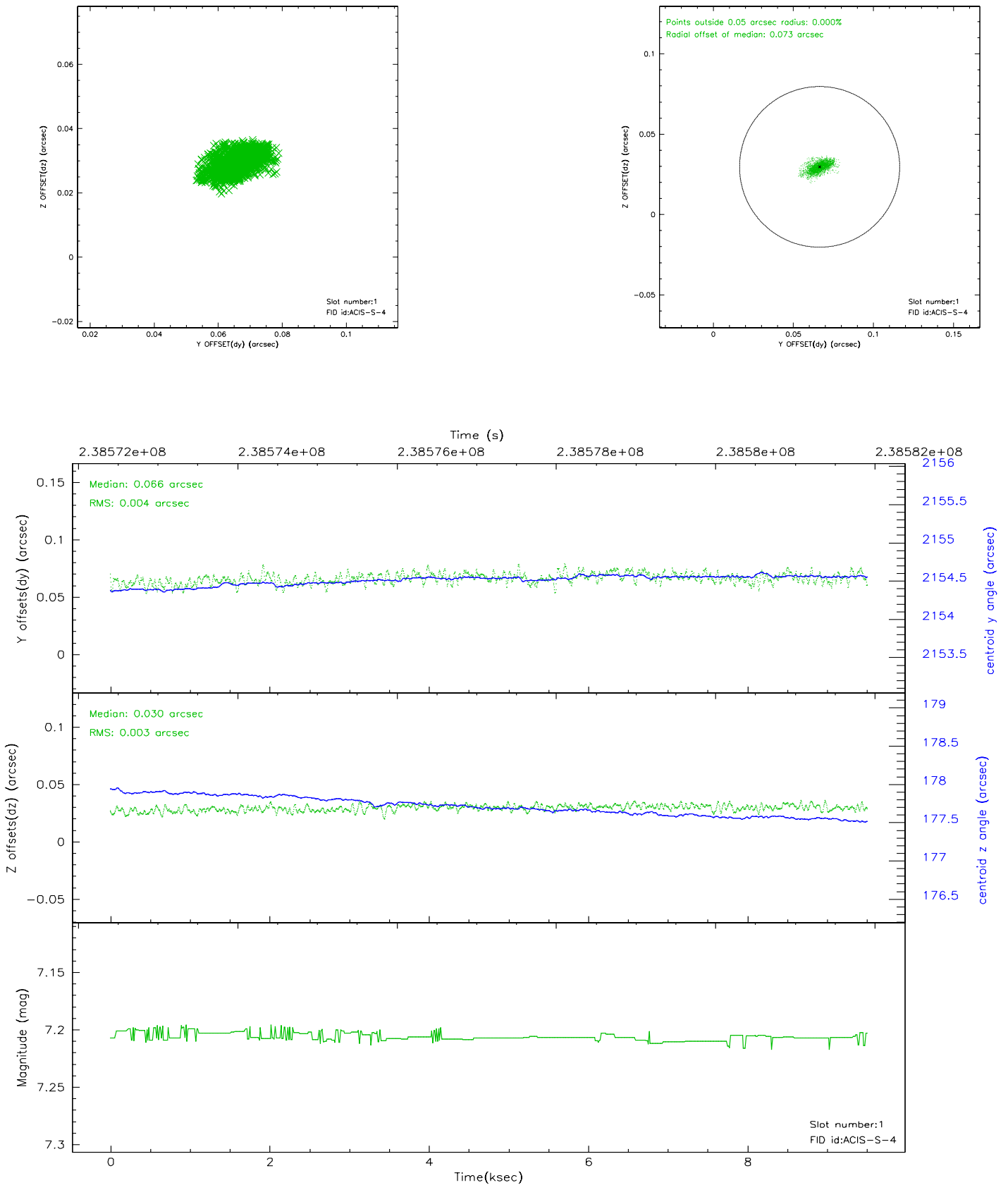


2.5 FID Slots

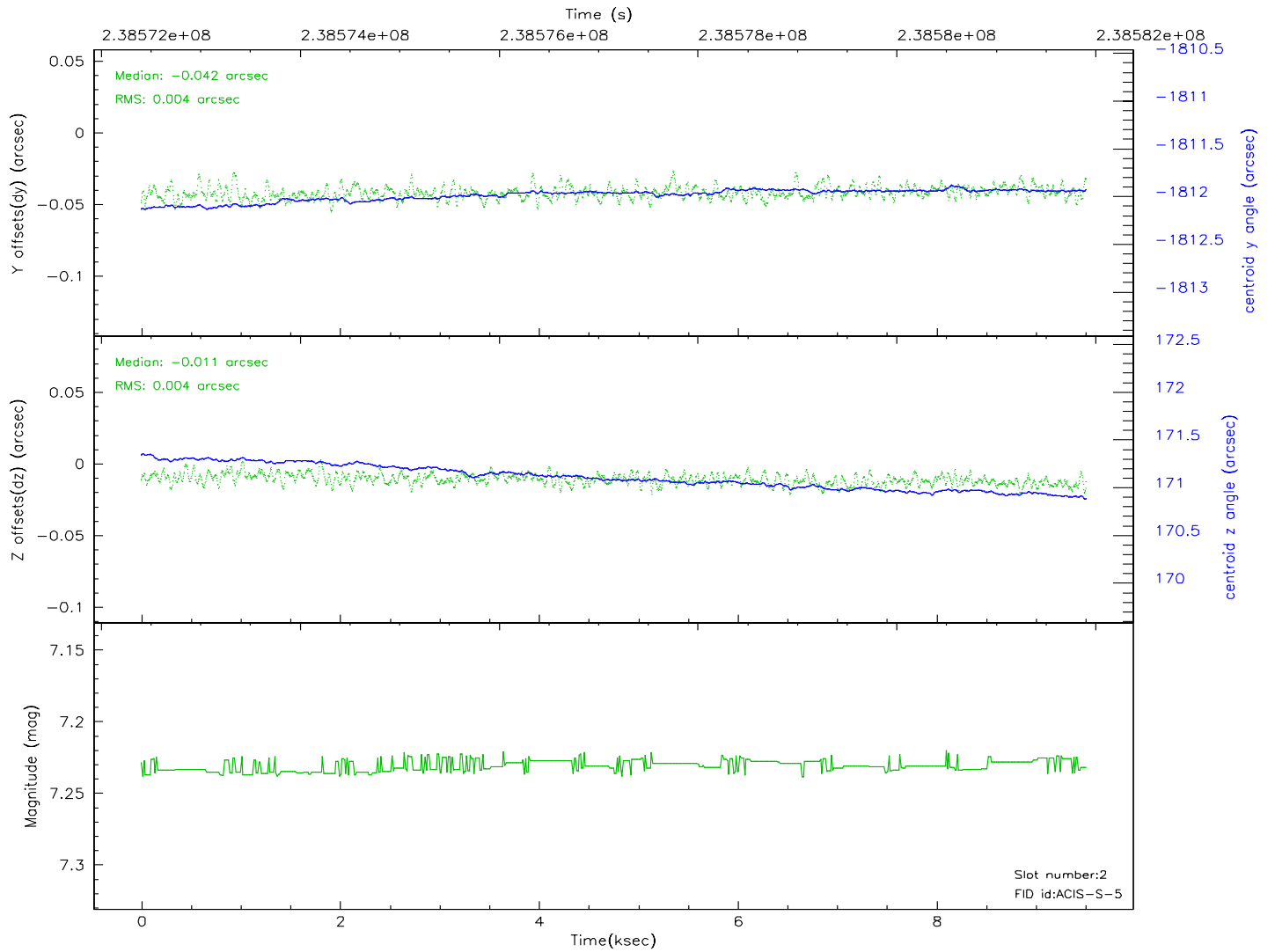
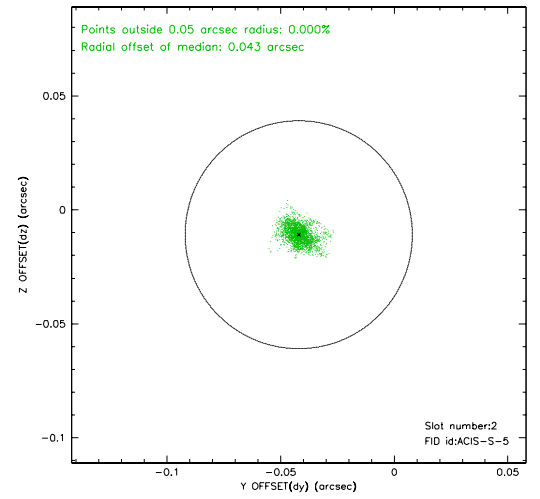
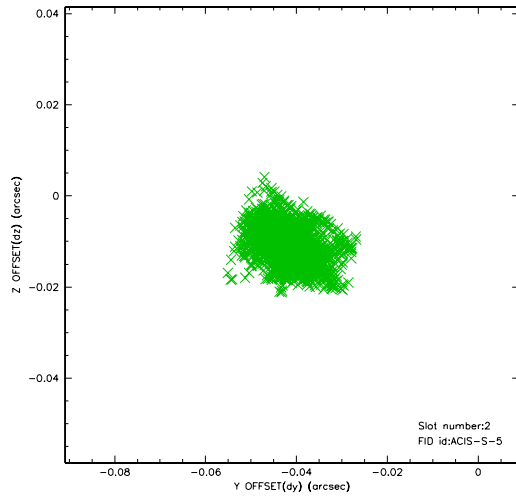
2.5.1 Slot 0



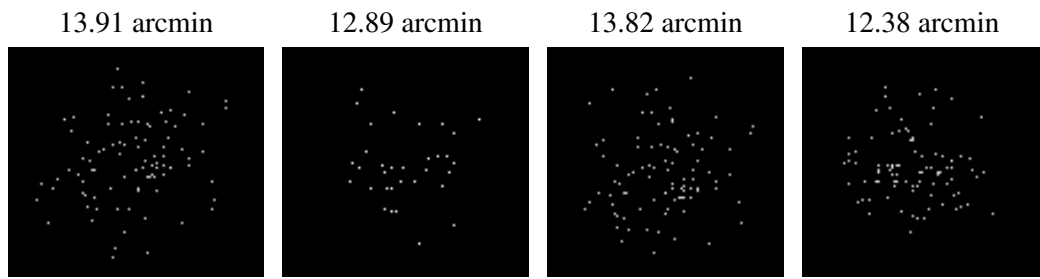
2.5.2 Slot 1



2.5.3 Slot 2



3 Point Sources



A Summary

A.1 Status

V&V Scientist	Jen Lauer
V&V Date (YYYY-MM-DD)	2006.03.15
V&V Edition	1
V&V Disposition and Status	OK
V&V Charge Time	9.392435

A.2 Comments

Window constraint met for all but first 500 seconds of the observation.
The ACIS focal plane temperature was above calibration limits for the entire observation.