

V&V Reference Report

L2 ASCDS Version : 7.6.7.2

Observation 5340 - L2 Version 001
Chandra X-Ray Center

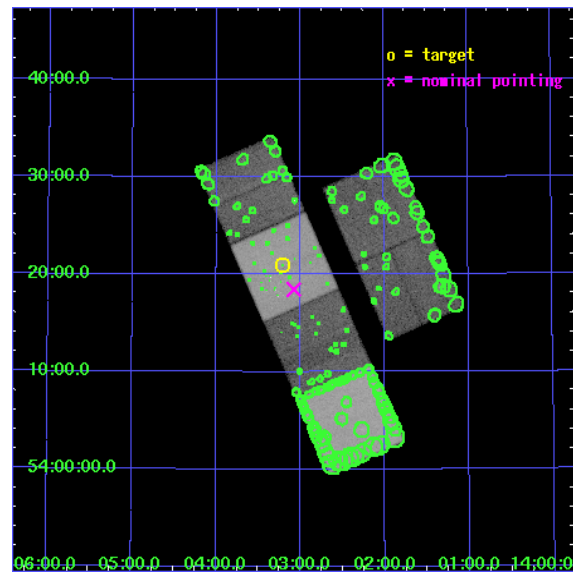
L2 Processing Date : Apr 29 2006

Contents

1	Front	2
2	OBI	3
2.1	OBI	3
2.1.1	Images	3
2.1.2	Bias	3
2.1.3	Parameters	4
2.1.4	Events	4
2.2	Compared Parameters	5
2.3	Aspect	6
2.4	Star Slots	9
2.4.1	Slot 3	9
2.4.2	Slot 4	10
2.4.3	Slot 5	11
2.4.4	Slot 6	12
2.4.5	Slot 7	13
2.5	FID Slots	14
2.5.1	Slot 0	14
2.5.2	Slot 1	15
2.5.3	Slot 2	16
3	Point Sources	17
A	Summary	18
A.1	Status	18
A.2	Comments	18

1 Front

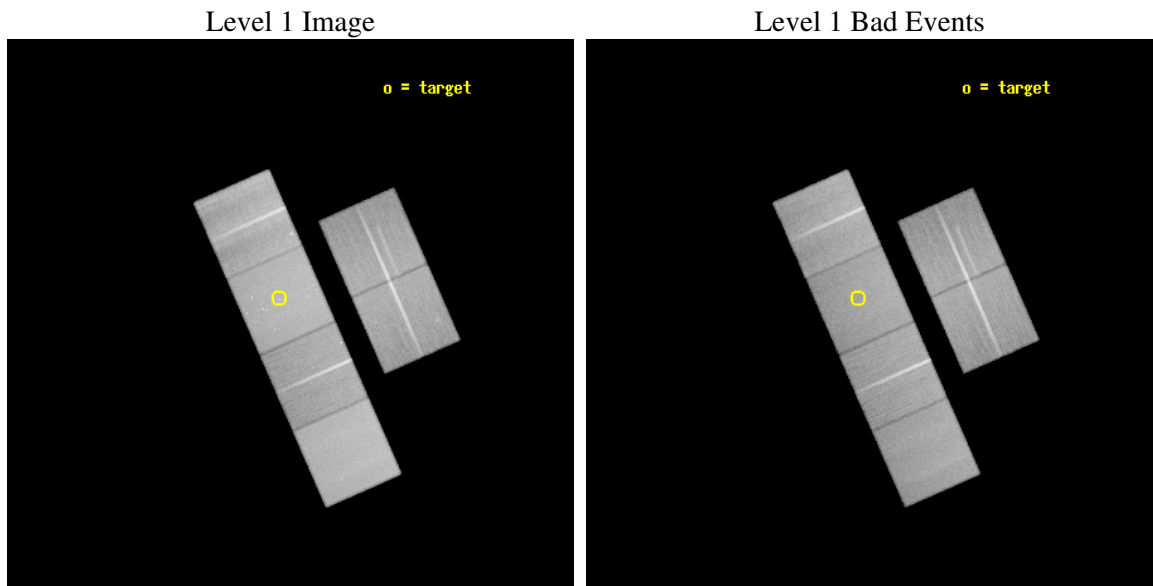
seq_num	600389
obs_id	5340
title	An Ultra-Deep Study of M101
observer	Dr. K. Kuntz
object	M101
dtcycle	0
cycle	P
ra_targ	210.80375
dec_targ	54.348778
ra_nom	210.76929703991
dec_nom	54.307719094808
roll_nom	246.1846193391
revision	2
ontime	55116.799794674
livetime	54418.877688321
ontime2	55100.594863594
ontime3	55110.31786415
ontime5	55116.799794674
ontime6	55110.317854106
ontime7	55116.799794674
ontime8	55110.31786409
l2events	655510



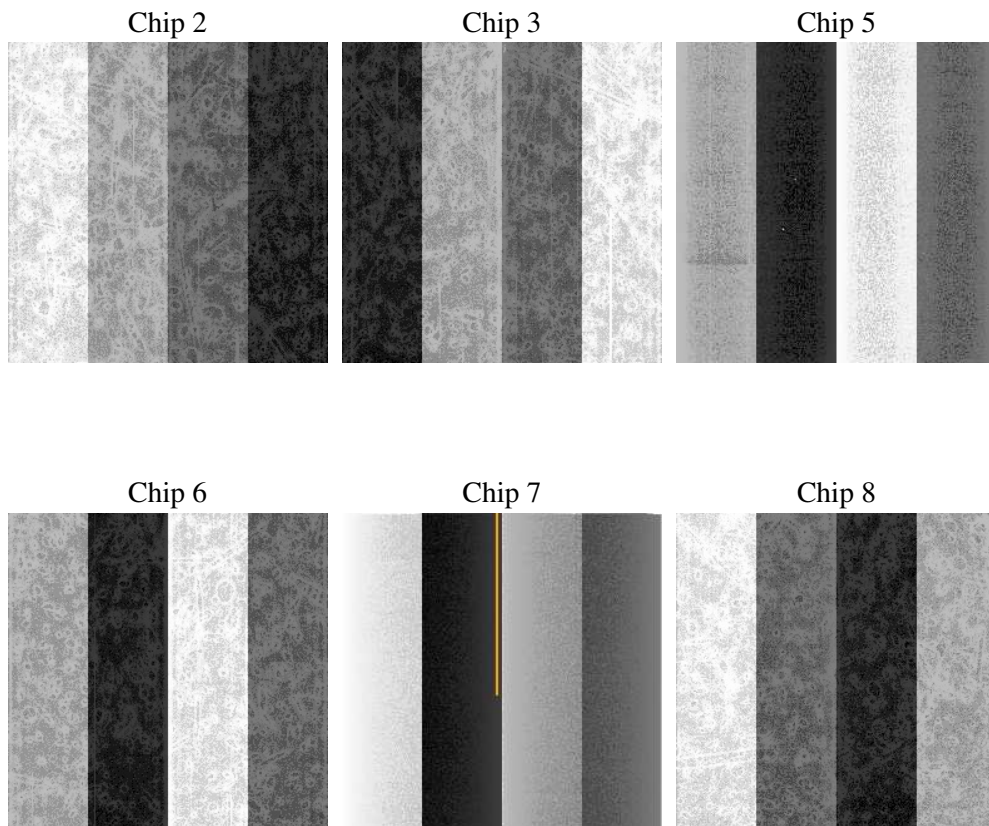
2 OBI

2.1 OBI

2.1.1 Images



2.1.2 Bias



2.1.3 Parameters

obi_num	1
ascdsver	7.6.7.2
caldsver	3.2.1
date	2006-04-29T16:07:41
revision	2

sched_exp_time	55000.000000
ontime	55385.467776626
ontime2	55369.262815624
ontime3	55378.985846102
ontime5	55385.467776626
ontime6	55378.985806137
ontime7	55385.467776626
ontime8	55378.985816121
l1events	2998392

2.1.4 Events

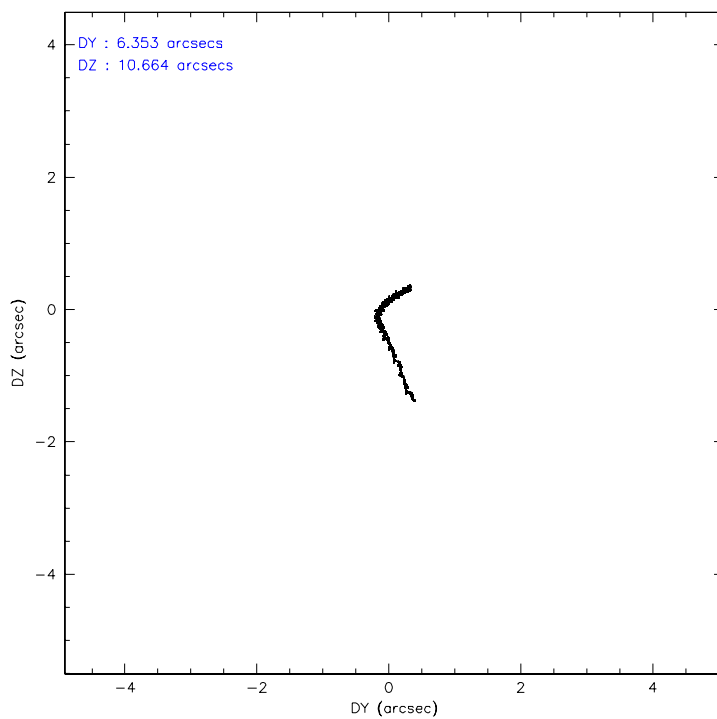
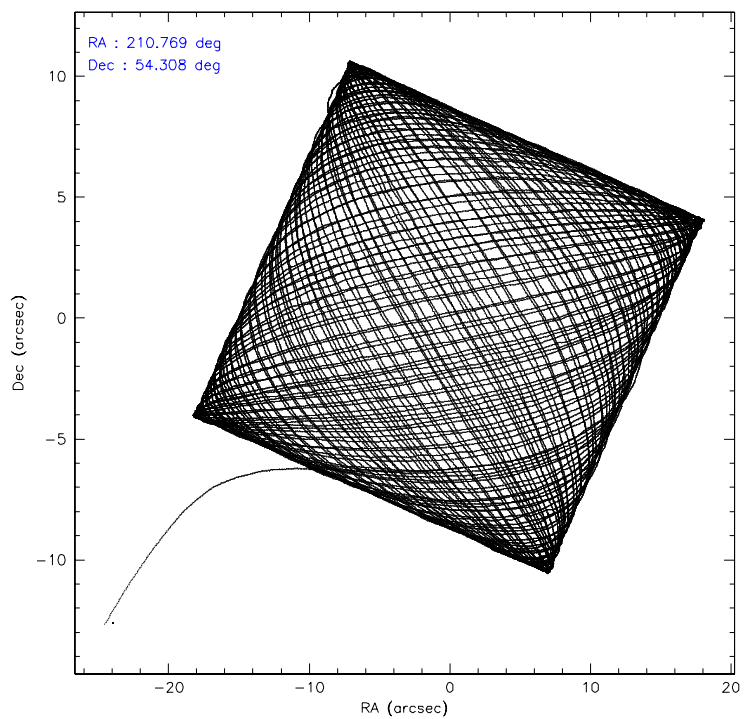
	ccd 2	ccd 3	ccd 5	ccd 6	ccd 7	ccd 8
level 1 events	432046	410518	611994	428678	576530	538626
rejected events	381748	362931	351385	377690	352127	424013
rejected %	88%	88%	57%	88%	61%	78%

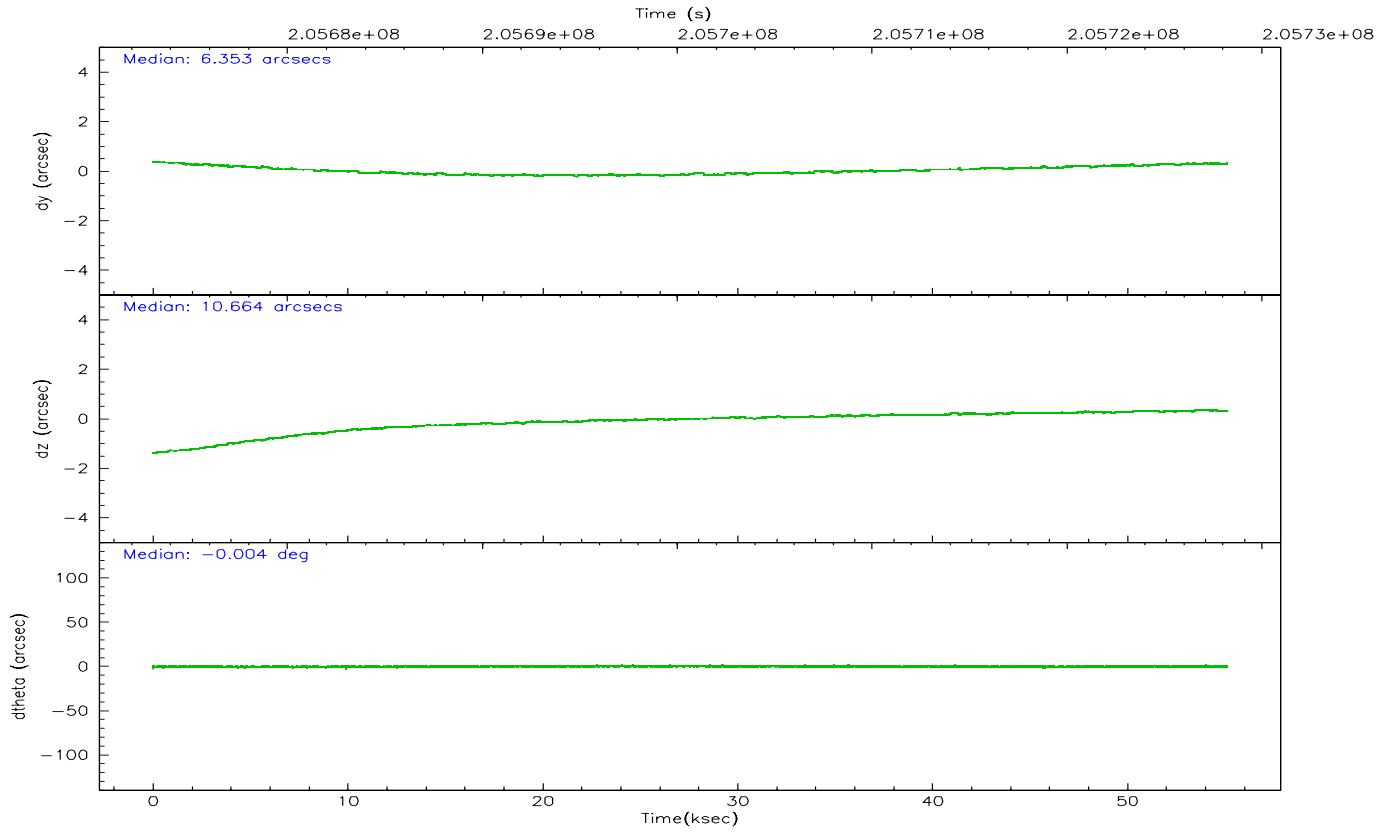
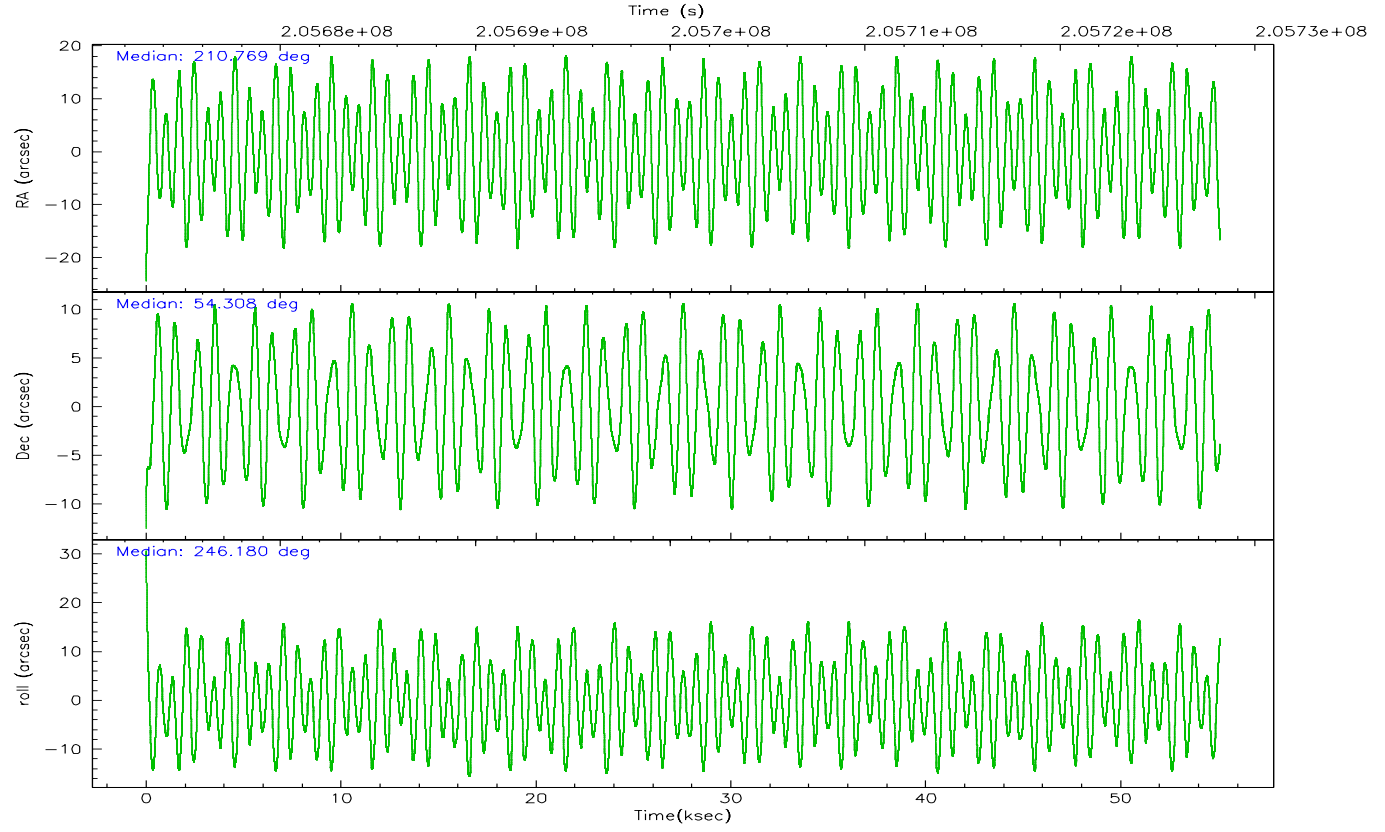
	ccd 2	ccd 3	ccd 5	ccd 6	ccd 7	ccd 8
grade 0 events	22661	20732	10209	20821	15876	36308
	5%	5%	1%	4%	2%	6%
grade 1 events	294	222	505	209	332	386
	0%	0%	0%	0%	0%	0%
grade 2 events	10394	9130	81916	10683	56293	25499
	2%	2%	13%	2%	9%	4%
grade 3 events	4563	4702	5925	5006	11706	12050
	1%	1%	0%	1%	2%	2%
grade 4 events	4672	4801	5454	4752	11421	11608
	1%	1%	0%	1%	1%	2%
grade 5 events	16792	18508	29206	19163	37427	25246
	3%	4%	4%	4%	6%	4%
grade 6 events	8266	8455	158477	9988	130164	29803
	1%	2%	25%	2%	22%	5%
grade 7 events	364404	343968	320302	358056	313311	397726
	84%	83%	52%	83%	54%	73%

2.2 Compared Parameters

Parameter	Planned	Actual	Parameter	Planned	Actual
Instrument	ACIS	ACIS	Obspar format version number	6	6
Detector	ACIS-235678	ACIS-235678	Obspar file type	PREDICTED	ACTUAL
Grating	NONE	NONE	Obspar update status	NONE	UPDATED
Data mode	VFAINT	VFAINT	On-chip summing requested	N	N
Observation mode	POINTING	POINTING	Subarray requested	NONE	NONE
Pointing RA	210.763621	210.7692970399087	Alternating exposures requested	N	N
Pointing Dec	54.334730	54.30771909480803	Primary exposure time	0.000000	3.2
Pointing Roll	246.032598	246.1846193391028			
SIM focus pos (mm)	-0.684267	-0.6828225247311905			
SIM defocus (mm)	0	0.001444936568705701			
SIM translation stage pos (mm)	-190.132523	-190.1400660498719			
SIM translation stage offset (mm)	0	0.00754346686406393			
Observation start time	205673221.184000	205672047.06753			
Observation start date	2004-07-08T11:25:57	2004-07-08T11:07:27			
Observation end time	205728221.184000	205729679.74509			
Observation end date	2004-07-09T02:42:37	2004-07-09T03:07:59			
Read mode	TIMED	TIMED			

2.3 Aspect



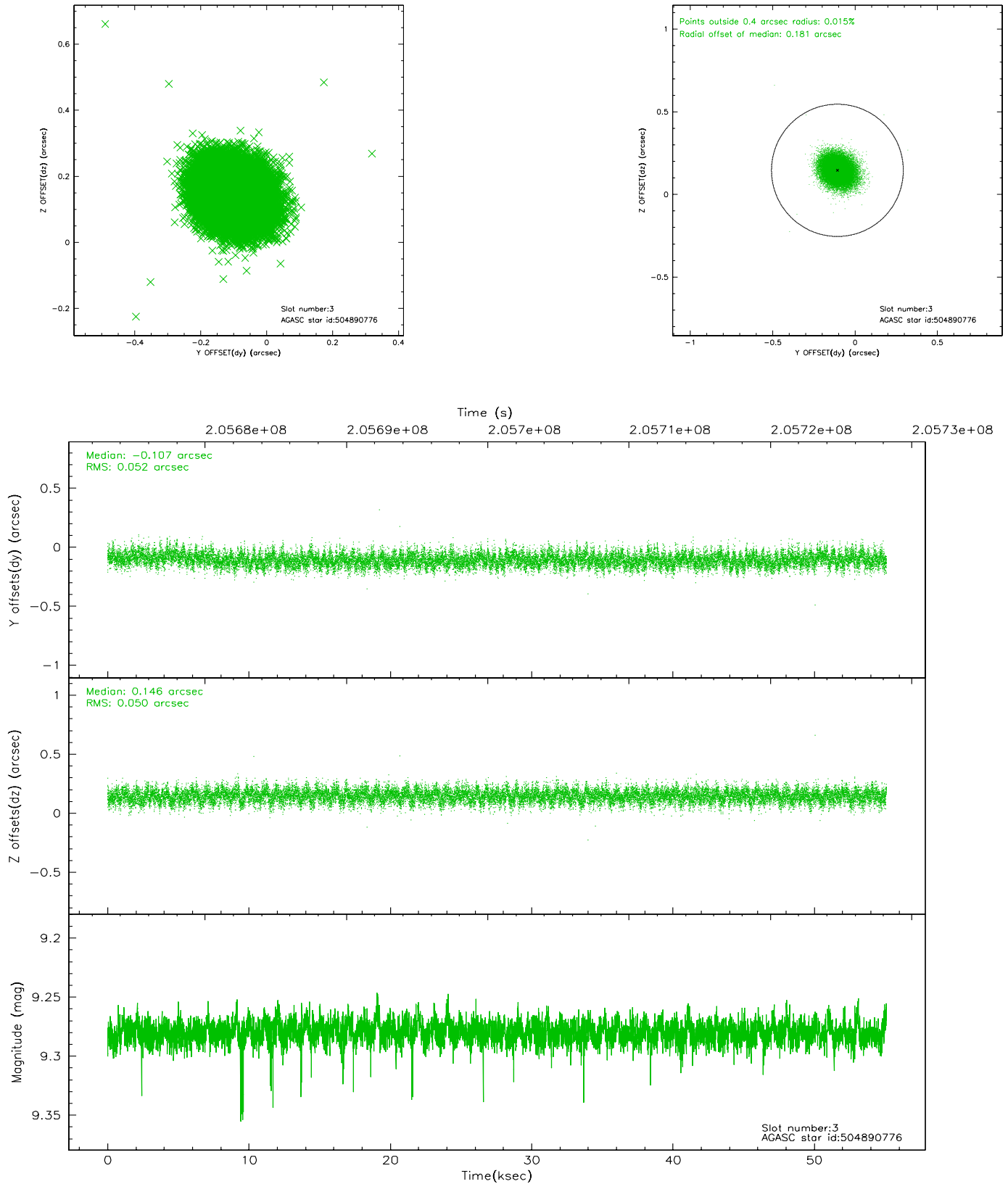


Slot Statistics

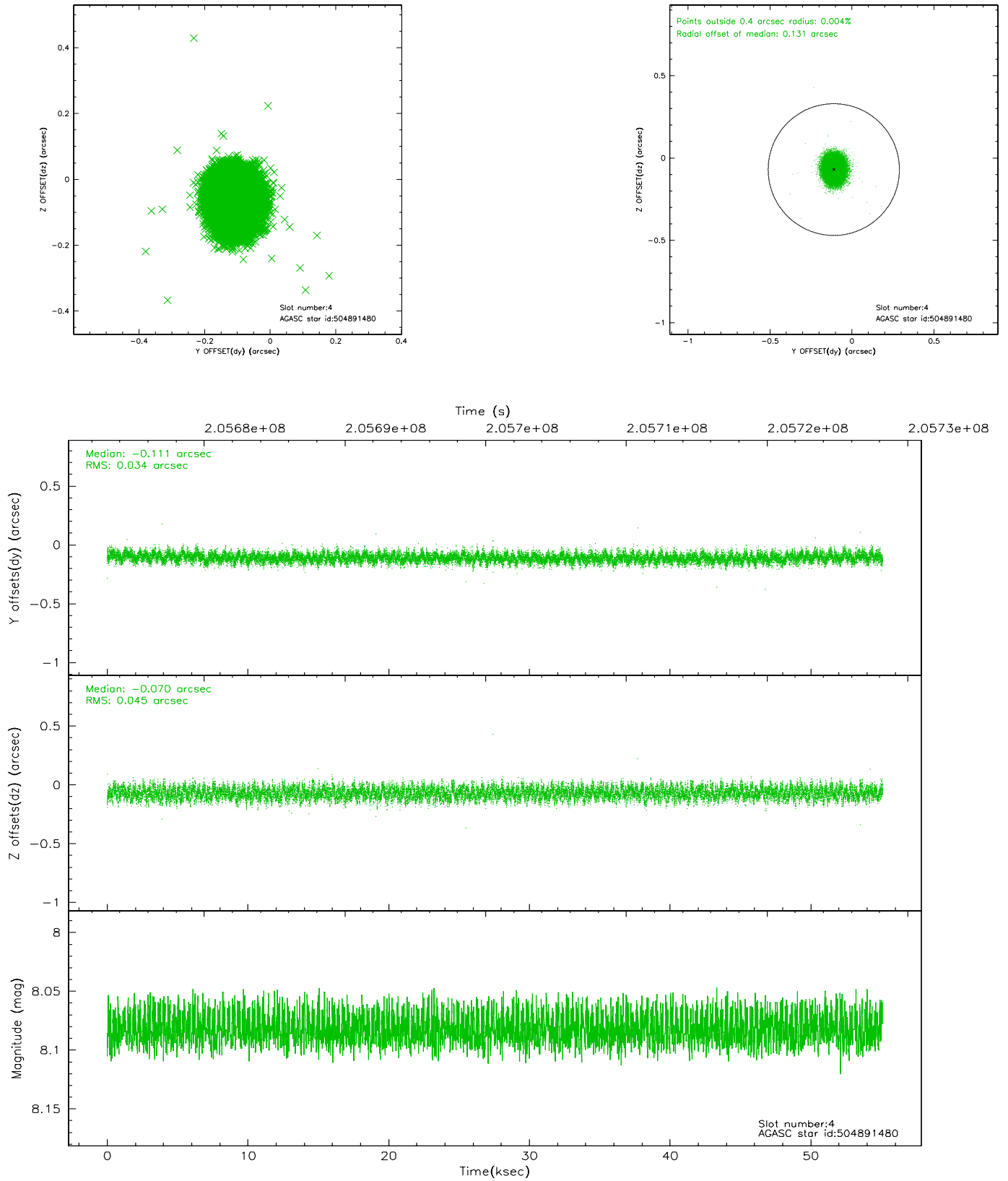
slot	status	id	mag	n_pts	med_dy	med_dz	dr1	dr2	ra	dec	mean_y	mean_z
0	FID	ACIS-S-2	7.10	13445	-0.049	-0.030	0.012	0.036	0.000000	0.000000	-759.15	-1731.82
1	FID	ACIS-S-4	7.21	13444	0.035	0.027	0.010	0.023	0.000000	0.000000	2154.20	176.76
2	FID	ACIS-S-6	7.34	13445	-0.014	0.008	0.010	0.023	0.000000	0.000000	402.80	814.09
3	GUIDE	504890776	9.28	26859	-0.107	0.146	0.077	0.126	211.095934	54.816966	-1867.51	-75.83
4	GUIDE	504891480	8.08	26888	-0.111	-0.070	0.061	0.096	210.708012	54.666096	-1042.76	-590.38
5	GUIDE	504893088	9.21	26865	0.054	-0.061	0.078	0.127	210.351715	54.364955	249.79	-834.56
6	GUIDE	504894856	8.98	26881	0.114	-0.088	0.077	0.125	209.819510	54.132689	1462.10	-1529.43
7	GUIDE	504890480	8.18	26884	0.051	0.075	0.072	0.114	210.132463	53.768436	2404.10	-401.31

2.4 Star Slots

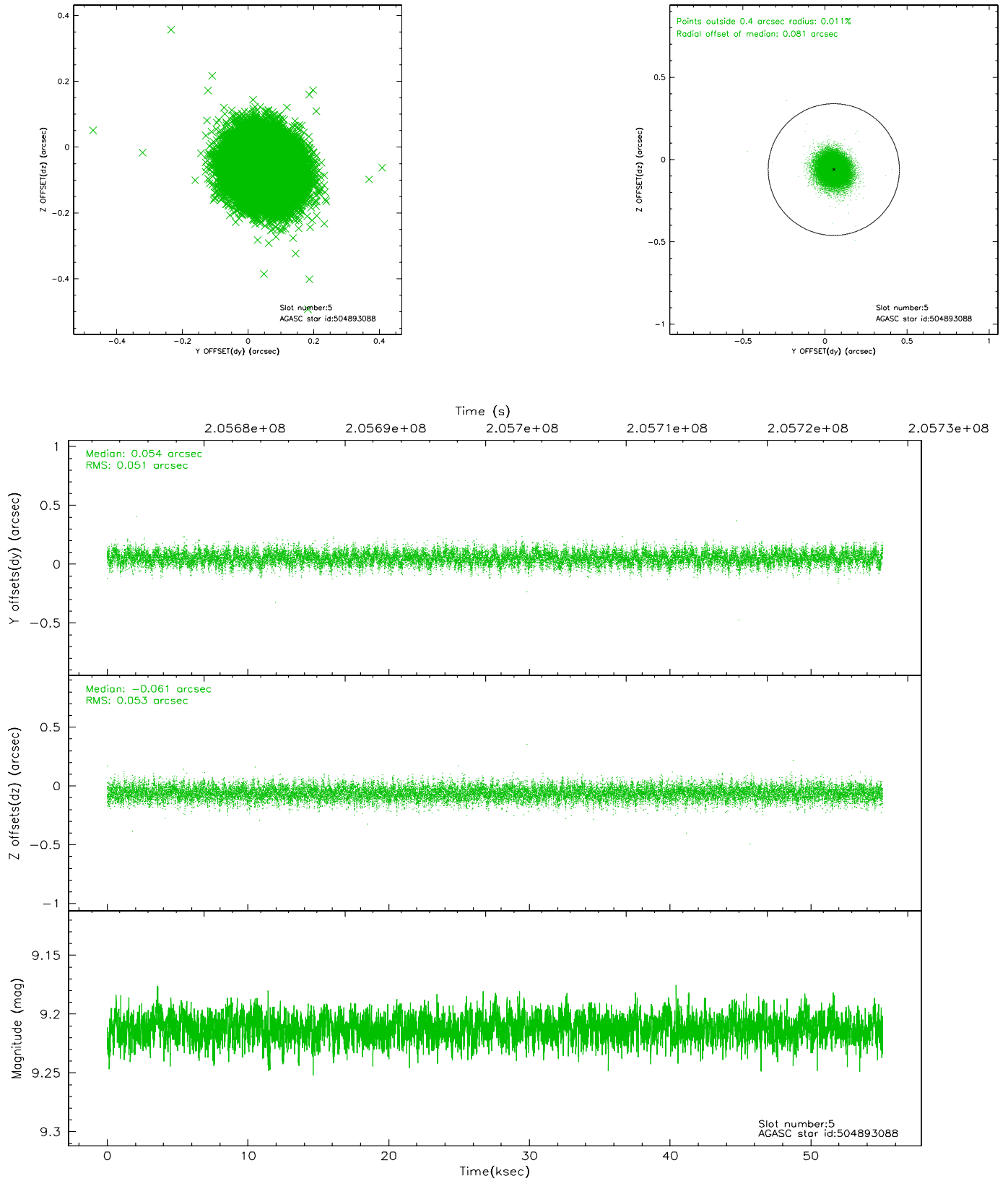
2.4.1 Slot 3



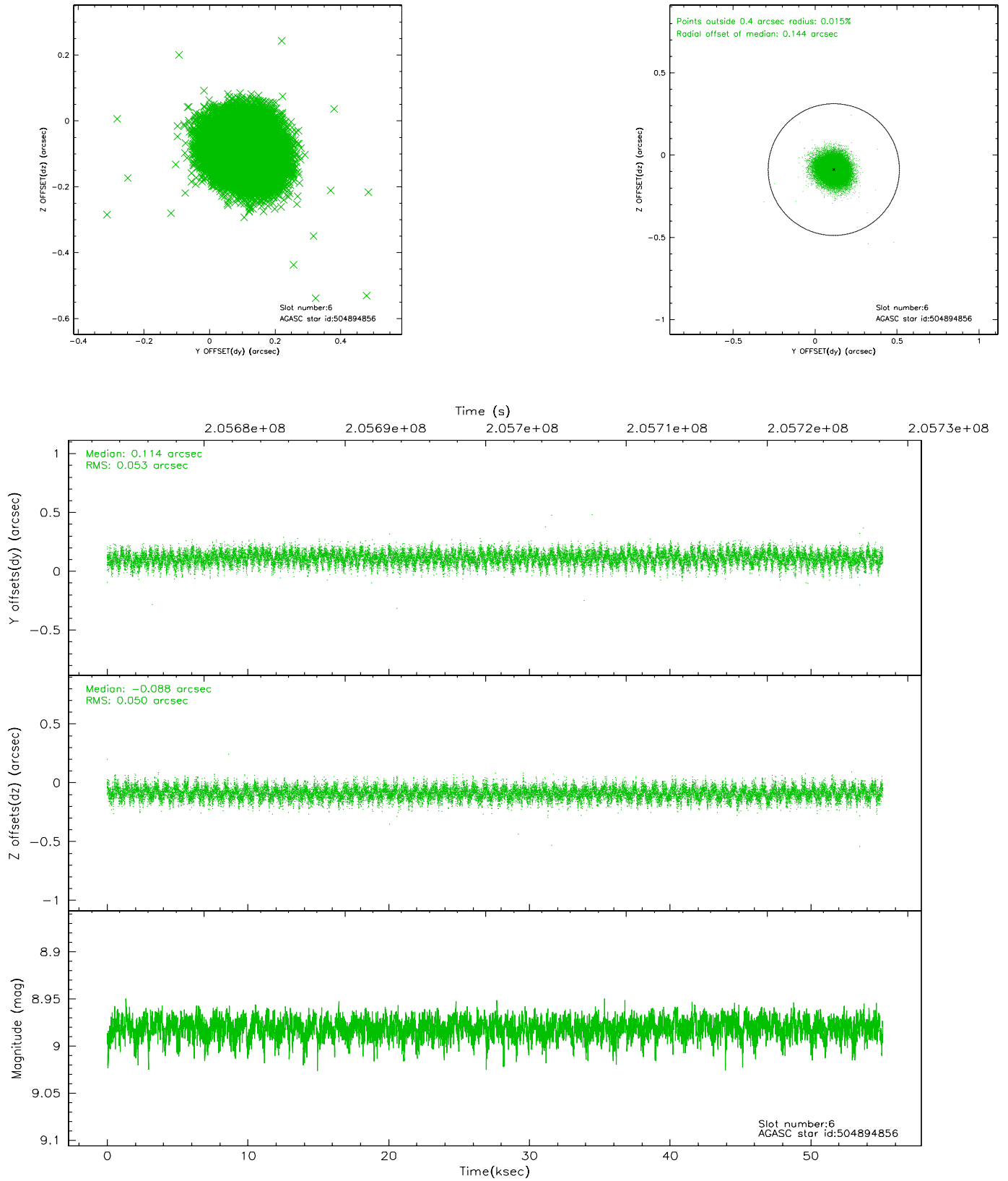
2.4.2 Slot 4



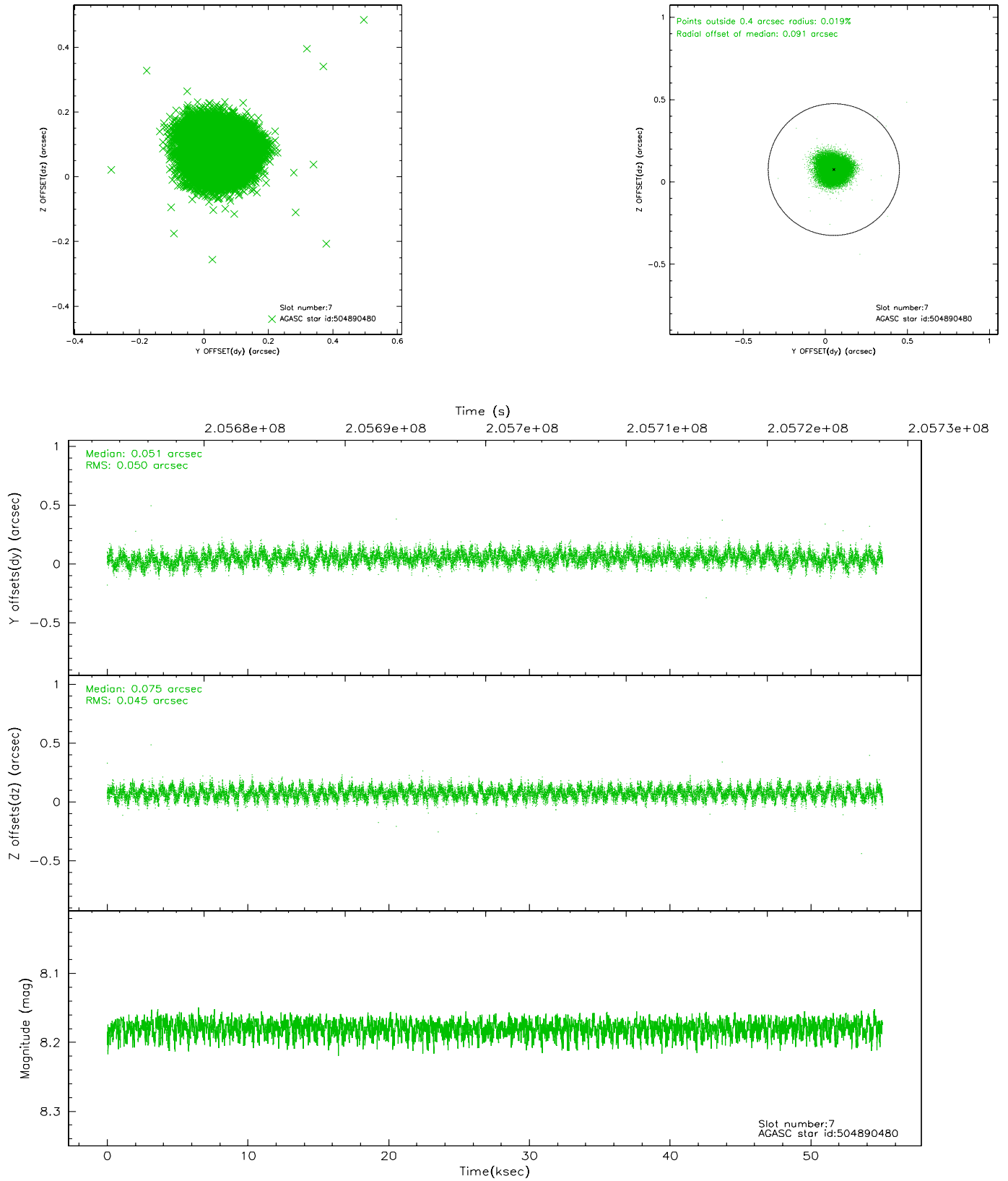
2.4.3 Slot 5



2.4.4 Slot 6

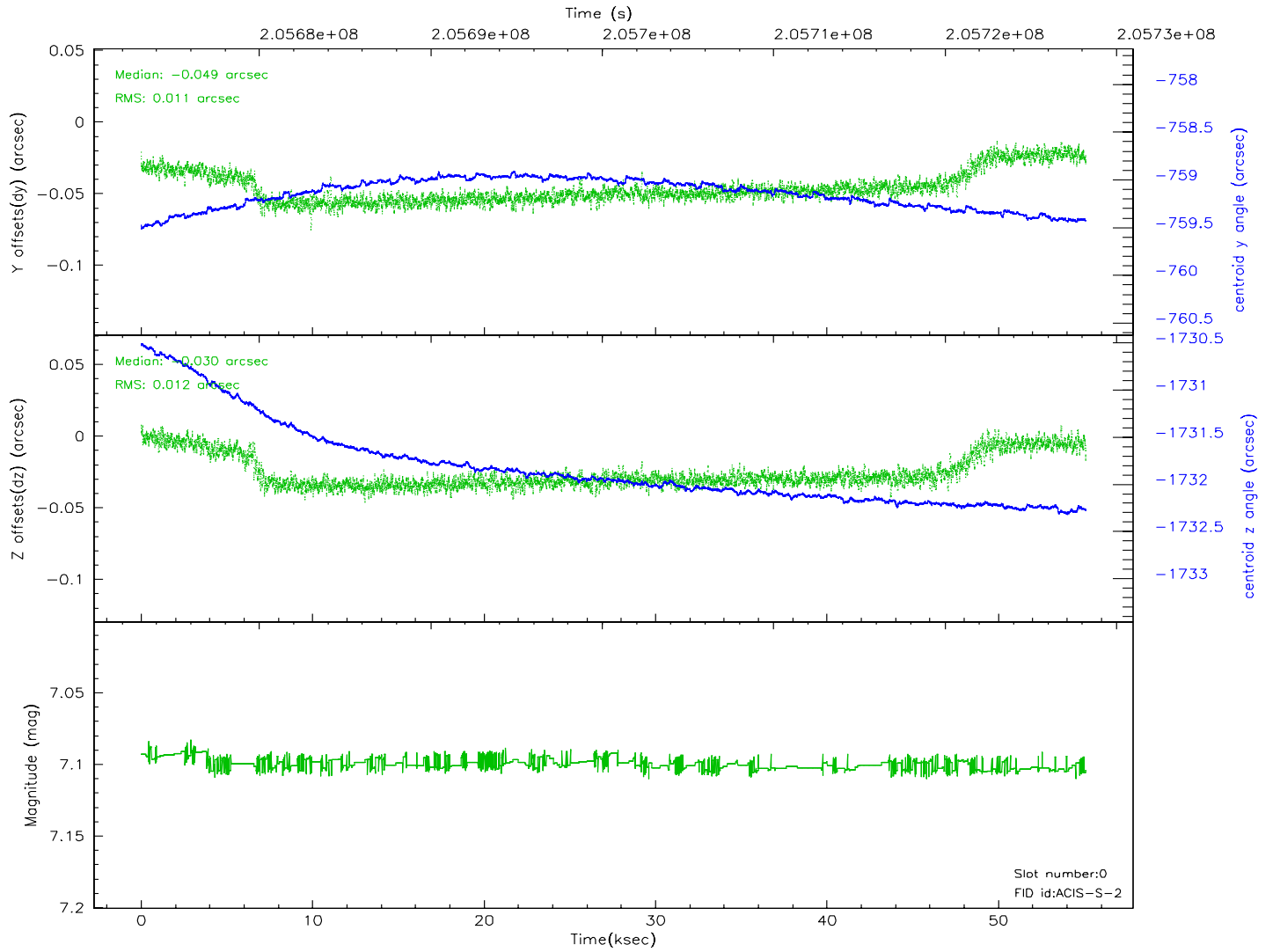
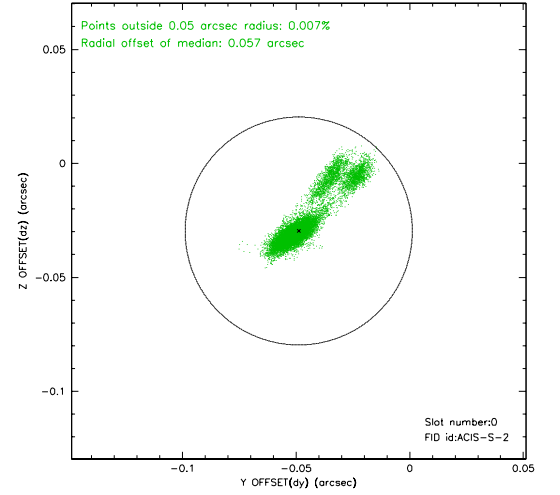
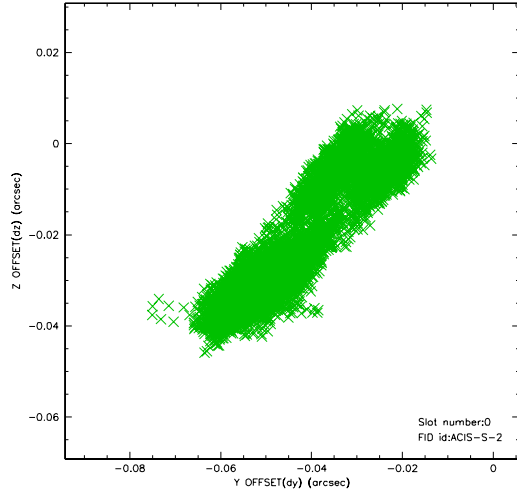


2.4.5 Slot 7

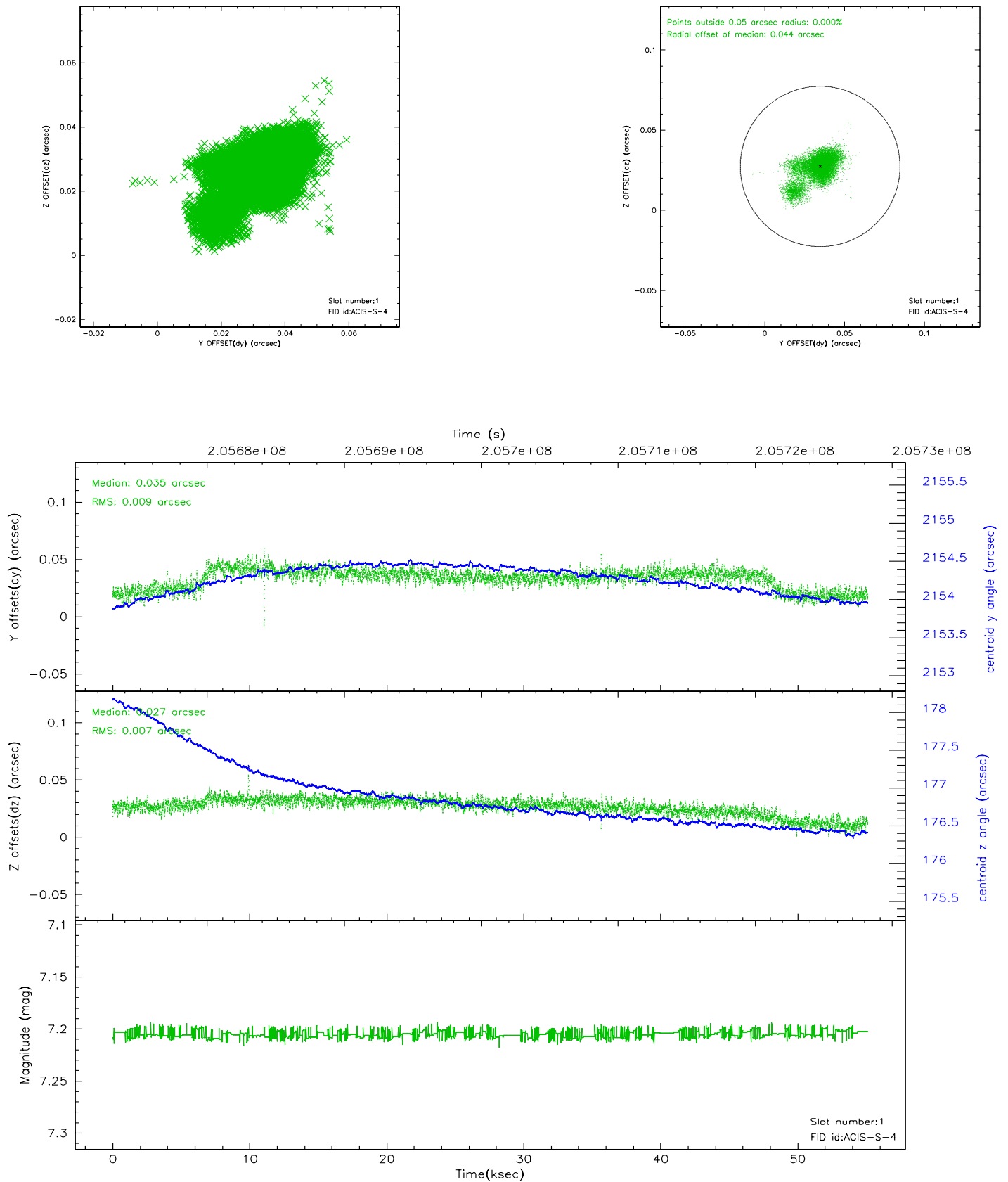


2.5 FID Slots

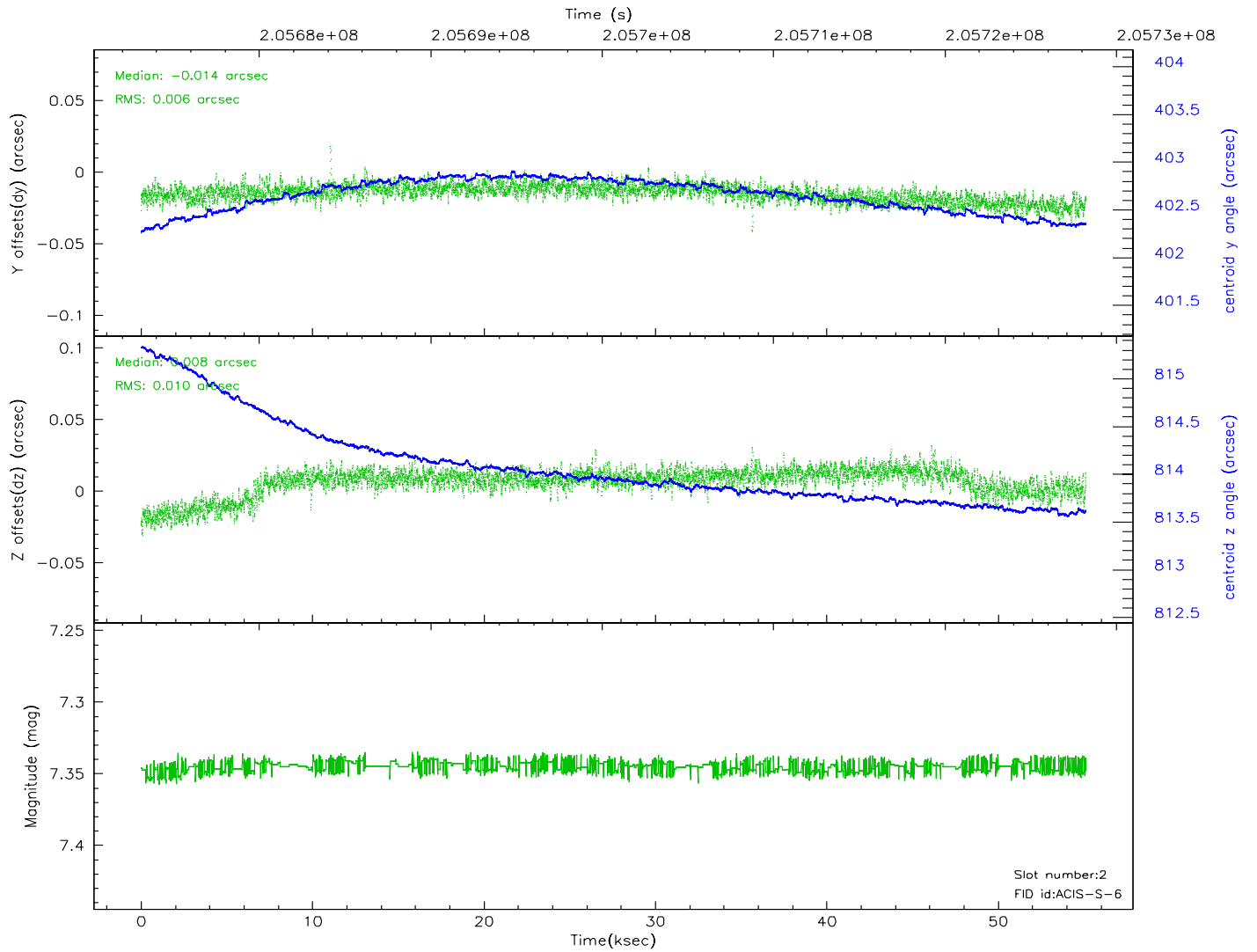
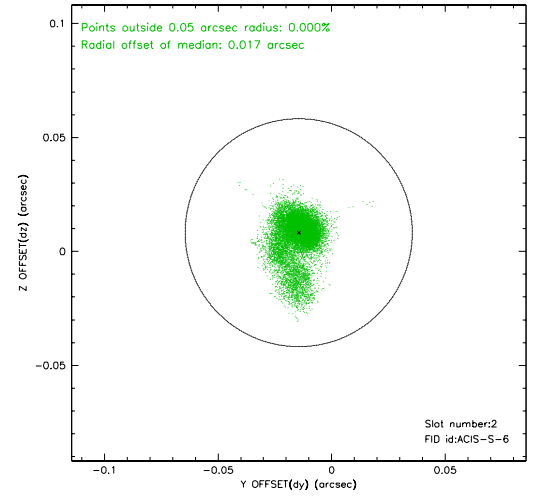
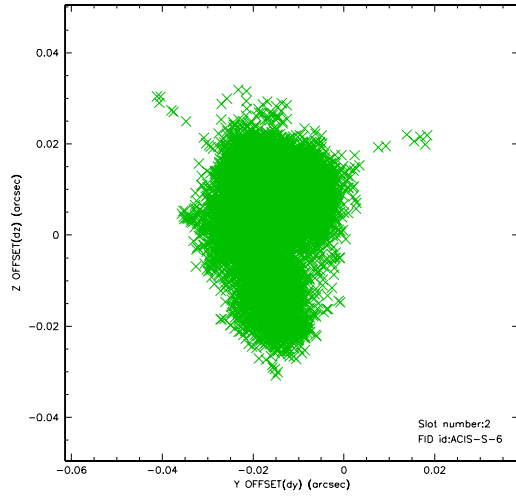
2.5.1 Slot 0



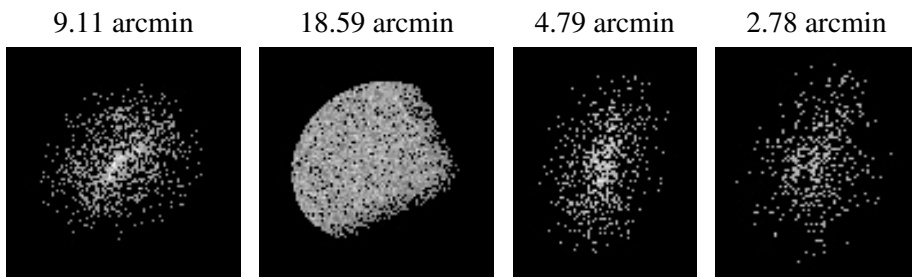
2.5.2 Slot 1



2.5.3 Slot 2



3 Point Sources



A Summary

A.1 Status

V&V Scientist	Jen Lauer
V&V Date (YYYY-MM-DD)	2006.04.30
V&V Edition	1
V&V Disposition and Status	OK
V&V Charge Time	55.116

A.2 Comments

Monitor constraint met. The ACIS focal plane temperature decreases by more than two degrees over the course of the observation, and is outside the calibration bounds during the first 6 ksec of the observation.