

V&V Reference Report

L2 ASCDS Version : 7.6.7.2

Observation 5130 - L2 Version 001
Chandra X-Ray Center

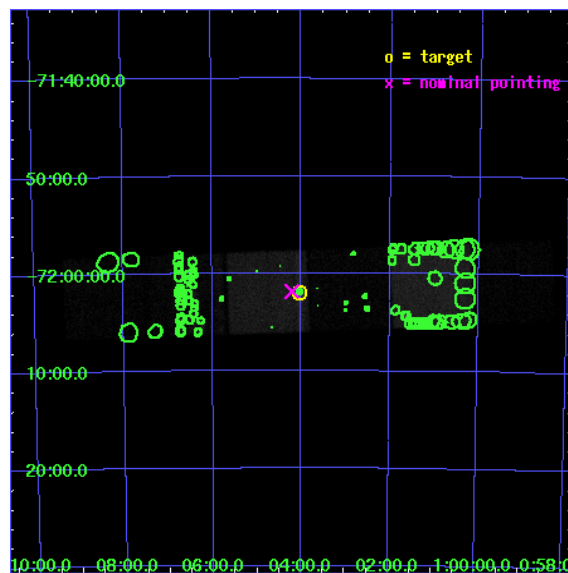
L2 Processing Date : May 25 2006

Contents

1	Front	2
2	OBI	3
2.1	OBI	3
2.1.1	Images	3
2.1.2	Bias	3
2.1.3	Parameters	4
2.1.4	Events	4
2.2	Compared Parameters	5
2.3	Aspect	6
2.4	Star Slots	9
2.4.1	Slot 3	9
2.4.2	Slot 4	10
2.4.3	Slot 5	11
2.4.4	Slot 6	12
2.4.5	Slot 7	13
2.5	FID Slots	14
2.5.1	Slot 0	14
2.5.2	Slot 1	15
2.5.3	Slot 2	16
3	Point Sources	17
A	Summary	18
A.1	Status	18
A.2	Comments	18

1 Front

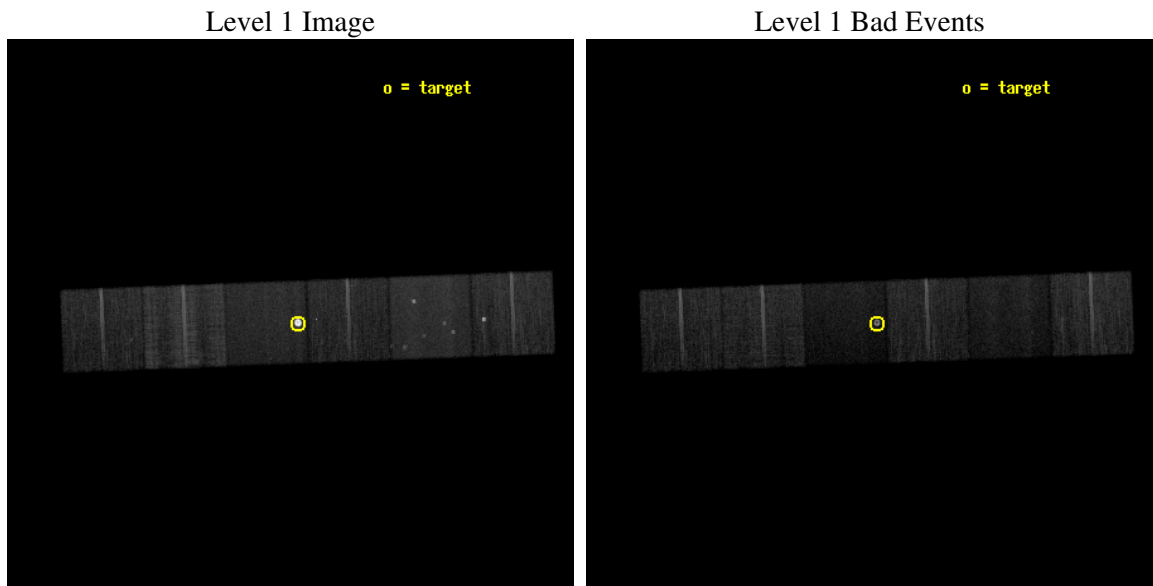
seq_num	590328
obs_id	5130
title	AO5B ACIS-S Calibration Observations of E0102-72
observer	Dr. CXC Calibration
object	E0102-72[S3,-120,1,0,0]
dtcycle	0
cycle	P
ra_targ	16.01
dec_targ	-72.032028
ra_nom	16.051298569152
dec_nom	-72.030897640181
roll_nom	177.78564137599
revision	2
ontime	19660.799926758
livetime	19411.843039773
ontime4	19657.558936566
ontime5	19660.799926758
ontime6	19660.799926758
ontime7	19660.799926758
ontime8	19657.558956474
ontime9	19660.799926758
l2events	300458



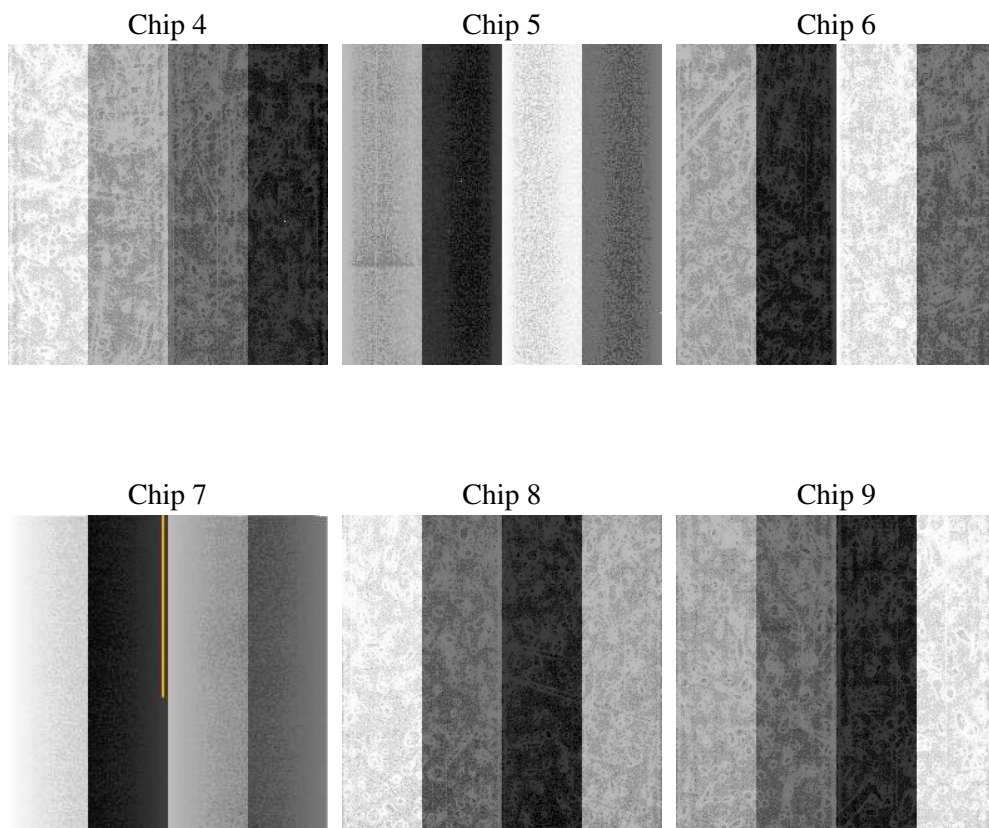
2 OBI

2.1 OBI

2.1.1 Images



2.1.2 Bias



2.1.3 Parameters

obi_num	0
ascdsver	7.6.7.2
caldsver	3.2.2
date	2006-05-25T08:11:13
revision	2

sched_exp_time	19600.000000
ontime	19666.401155531
ontime4	19663.16016534
ontime5	19666.401185423
ontime6	19666.401155531
ontime7	19666.401155531
ontime8	19663.160185248
ontime9	19666.401155531
l1events	904902

2.1.4 Events

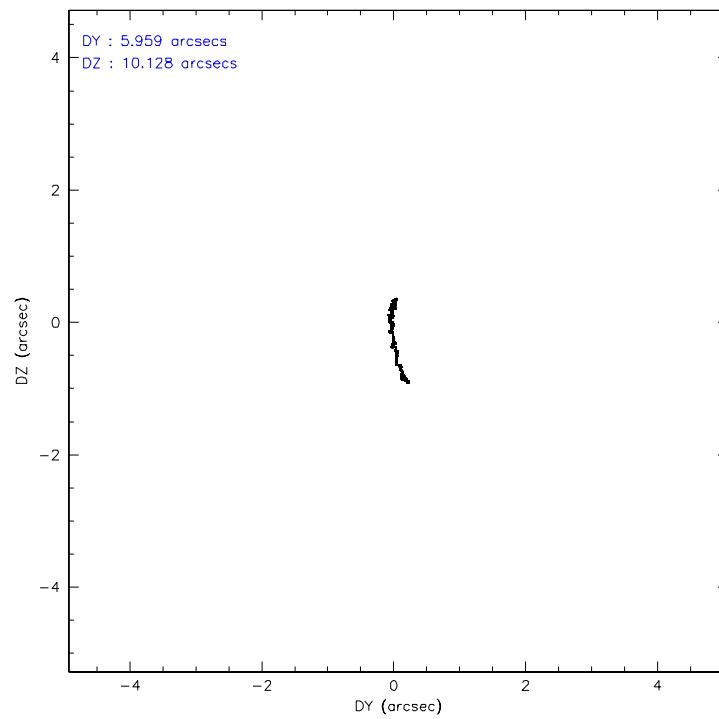
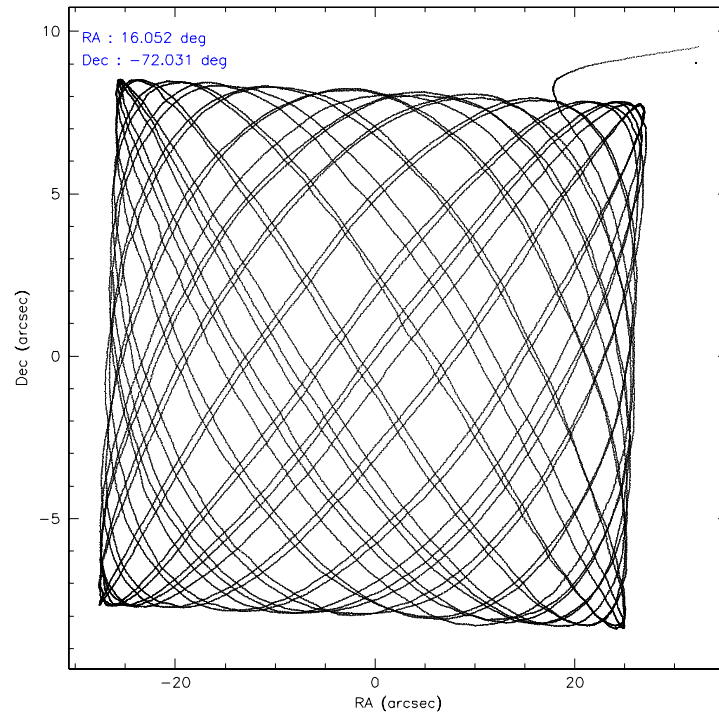
	ccd 4	ccd 5	ccd 6	ccd 7	ccd 8	ccd 9
level 1 events	136877	138637	113247	245936	162554	107651
rejected events	118093	66633	99362	59782	107009	95727
rejected %	86%	48%	87%	24%	65%	88%

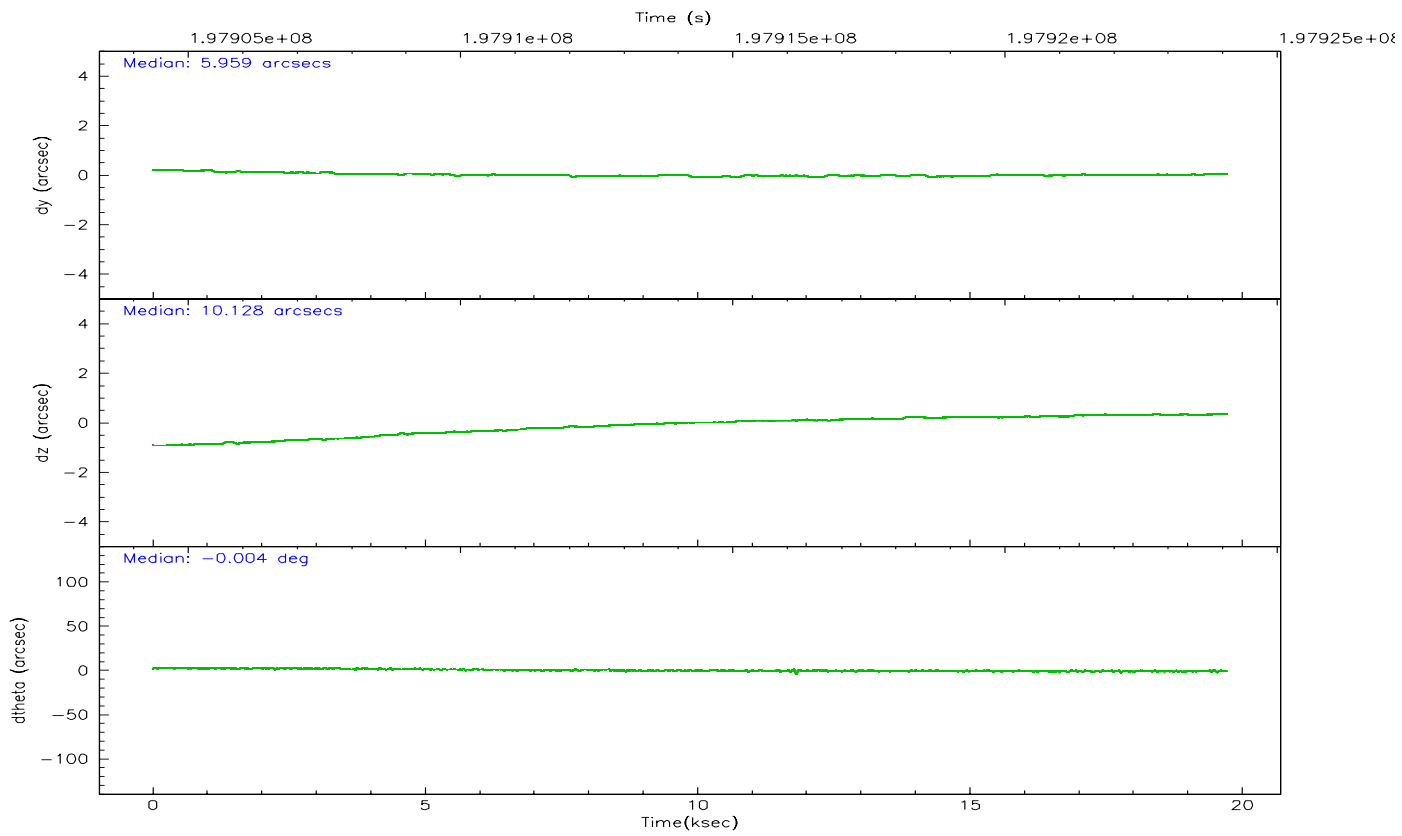
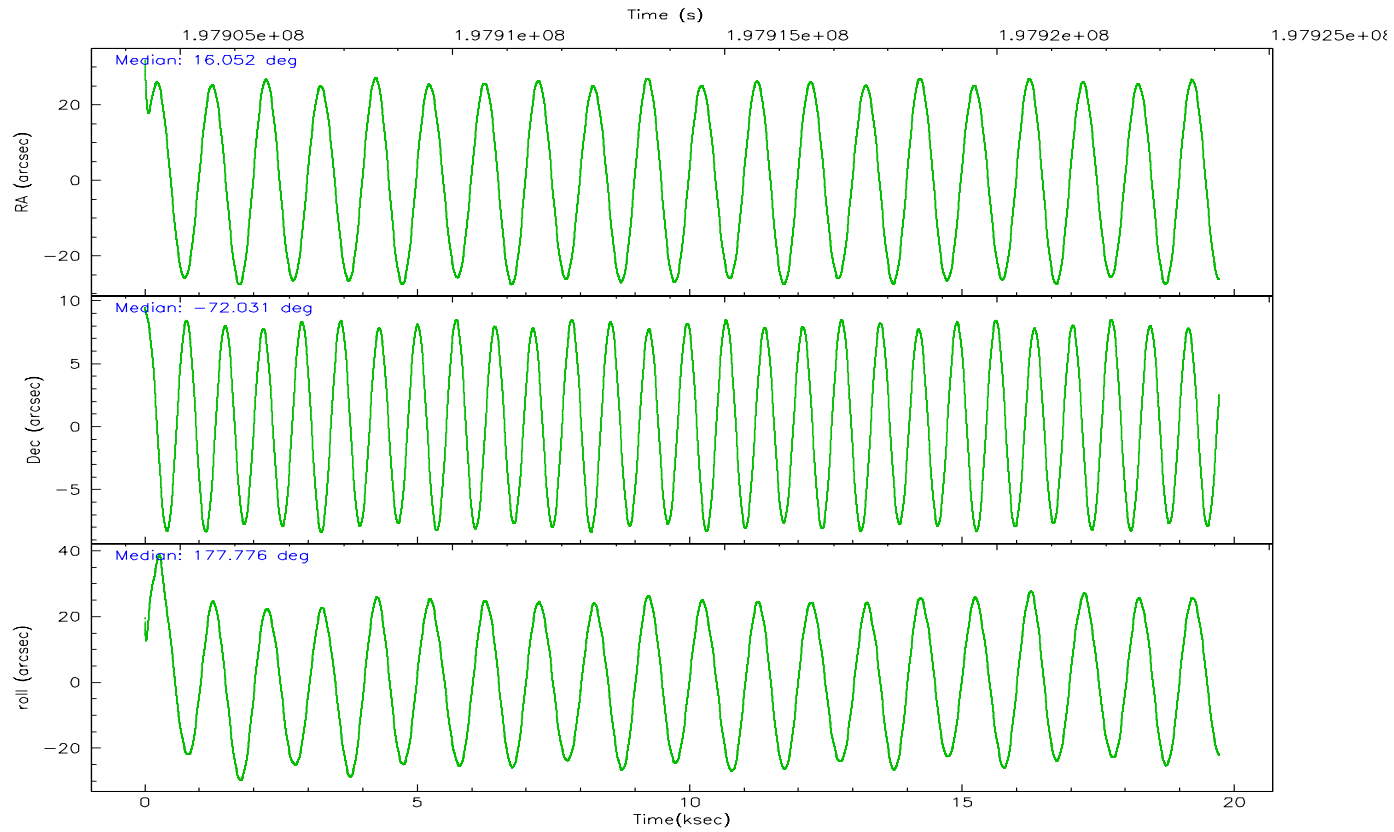
	ccd 4	ccd 5	ccd 6	ccd 7	ccd 8	ccd 9
grade 0 events	11318	7759	6379	42417	19685	4749
	8%	5%	5%	17%	12%	4%
grade 1 events	153	161	54	741	176	61
	0%	0%	0%	0%	0%	0%
grade 2 events	2951	22262	2696	53629	8595	2411
	2%	16%	2%	21%	5%	2%
grade 3 events	1350	2333	1312	19275	8716	1305
	0%	1%	1%	7%	5%	1%
grade 4 events	1294	2310	1285	19059	7937	1306
	0%	1%	1%	7%	4%	1%
grade 5 events	3580	7258	3677	10704	5521	3994
	2%	5%	3%	4%	3%	3%
grade 6 events	1881	37357	2216	51832	10641	2156
	1%	26%	1%	21%	6%	2%
grade 7 events	114350	59197	95628	48279	101283	91669
	83%	42%	84%	19%	62%	85%

2.2 Compared Parameters

Parameter	Planned	Actual	Parameter	Planned	Actual
Instrument	ACIS	ACIS	Obspar format version number	6	6
Detector	ACIS-456789	ACIS-456789	Obspar file type	PREDICTED	ACTUAL
Grating	NONE	NONE	Obspar update status	NONE	UPDATED
Data mode	VFAINT	VFAINT	On-chip summing requested	N	N
Observation mode	POINTING	POINTING	Subarray requested	NONE	NONE
Pointing RA	16.128627	16.05129856915222	Alternating exposures requested	N	N
Pointing Dec	-72.017860	-72.03089764018148	Primary exposure time	0.000000	3.2
Pointing Roll	177.702582	177.785641375991			
Window start time	197164864.184000	197164864.184000			
Window stop time	199670464.184000	199670464.184000			
SIM focus pos (mm)	-0.684267	-0.6828225247311905			
SIM defocus (mm)	0	0.001444936568705701			
SIM translation stage pos (mm)	-190.132523	-190.1400660498719			
SIM translation stage offset (mm)	0	0.00754346686406393			
Observation start time	197904477.184000	197903337.51184			
Observation start date	2004-04-09T13:26:53	2004-04-09T13:08:57			
Observation end time	197924077.184000	197924211.12526			
Observation end date	2004-04-09T18:53:33	2004-04-09T18:56:51			
Read mode	TIMED	TIMED			

2.3 Aspect



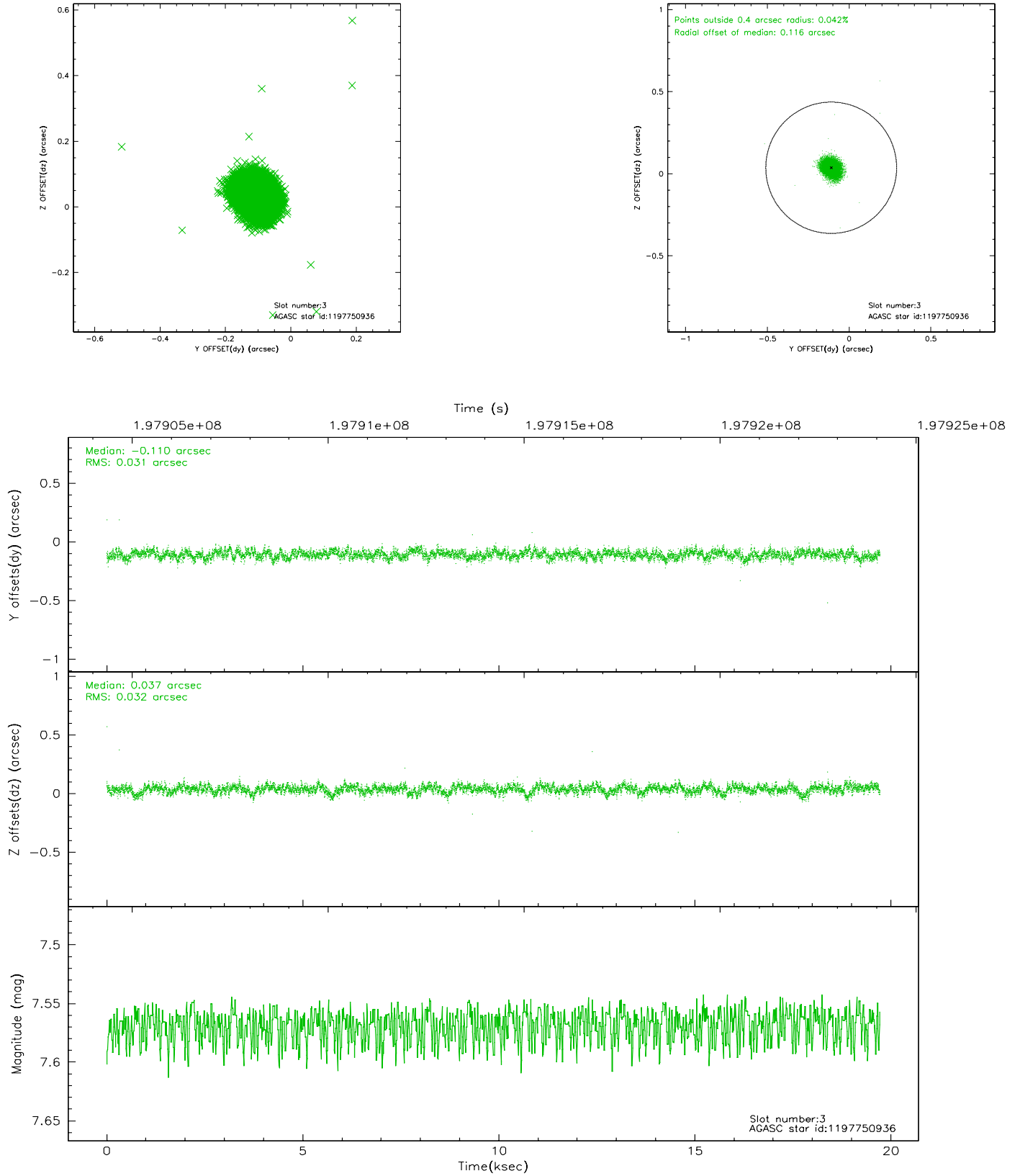


Slot Statistics

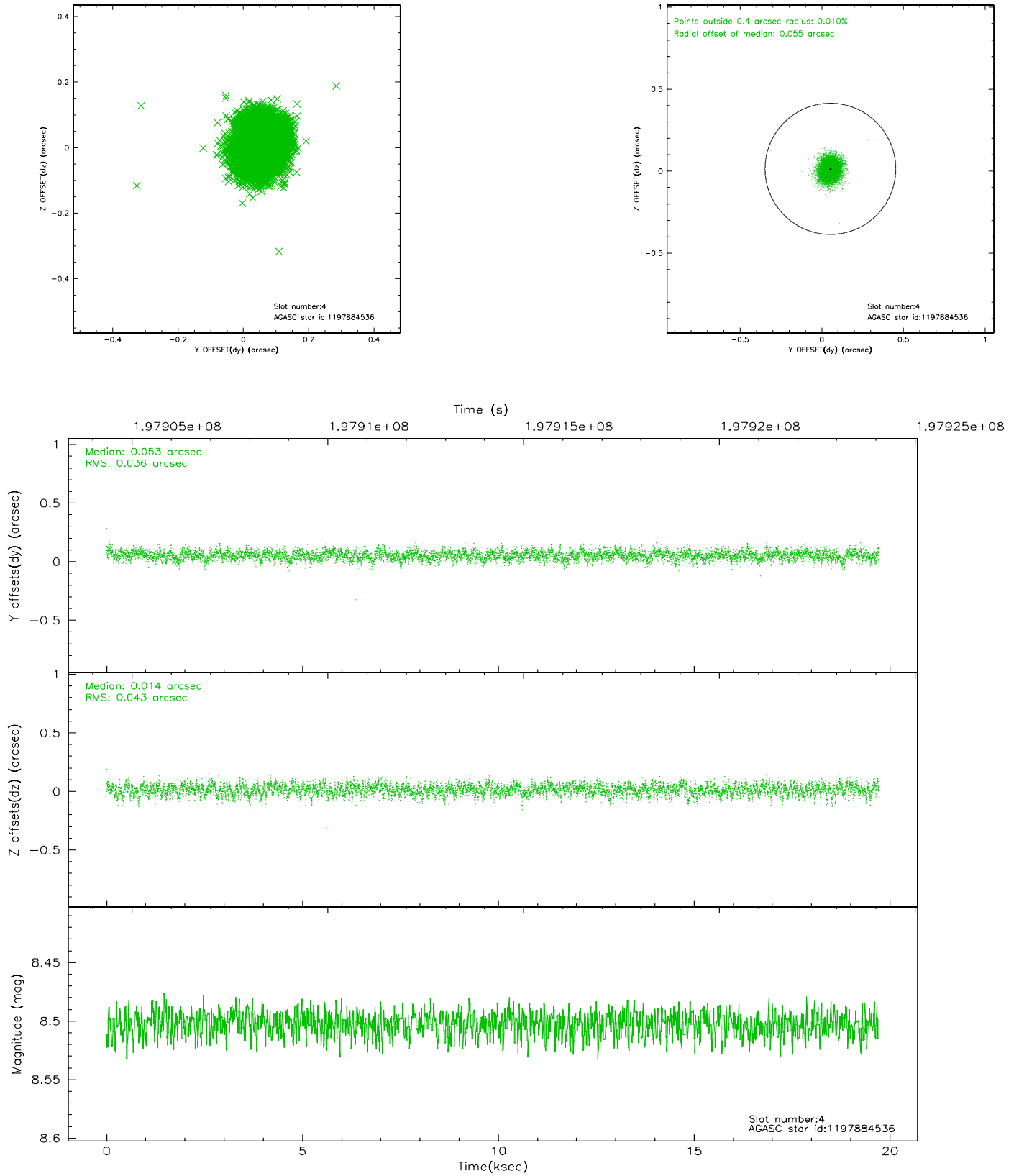
slot	status	id	mag	n_pts	med_dy	med_dz	dr1	dr2	ra	dec	mean_y	mean_z
0	FID	ACIS-S-2	7.10	4810	-0.032	0.003	0.010	0.020	0.000000	0.000000	-758.73	-1731.25
1	FID	ACIS-S-5	7.23	4810	-0.021	-0.026	0.012	0.023	0.000000	0.000000	-1811.92	170.50
2	FID	ACIS-S-6	7.35	4810	0.025	0.030	0.009	0.023	0.000000	0.000000	402.73	814.68
3	GUIDE	1197750936	7.57	9621	-0.110	0.037	0.046	0.075	15.387940	-71.549550	911.12	-1644.90
4	GUIDE	1197884536	8.50	9620	0.053	0.014	0.060	0.096	17.160729	-71.835289	-1130.73	-693.32
5	GUIDE	1197885104	9.36	9614	0.135	-0.014	0.080	0.132	17.845067	-72.189368	-1913.63	568.26
6	GUIDE	1197885328	7.23	9621	0.016	0.017	0.058	0.091	16.283090	-71.733943	-133.23	-1027.91
7	GUIDE	1198190968	9.99	9612	-0.093	-0.056	0.129	0.210	15.749622	-72.545972	332.62	1917.56

2.4 Star Slots

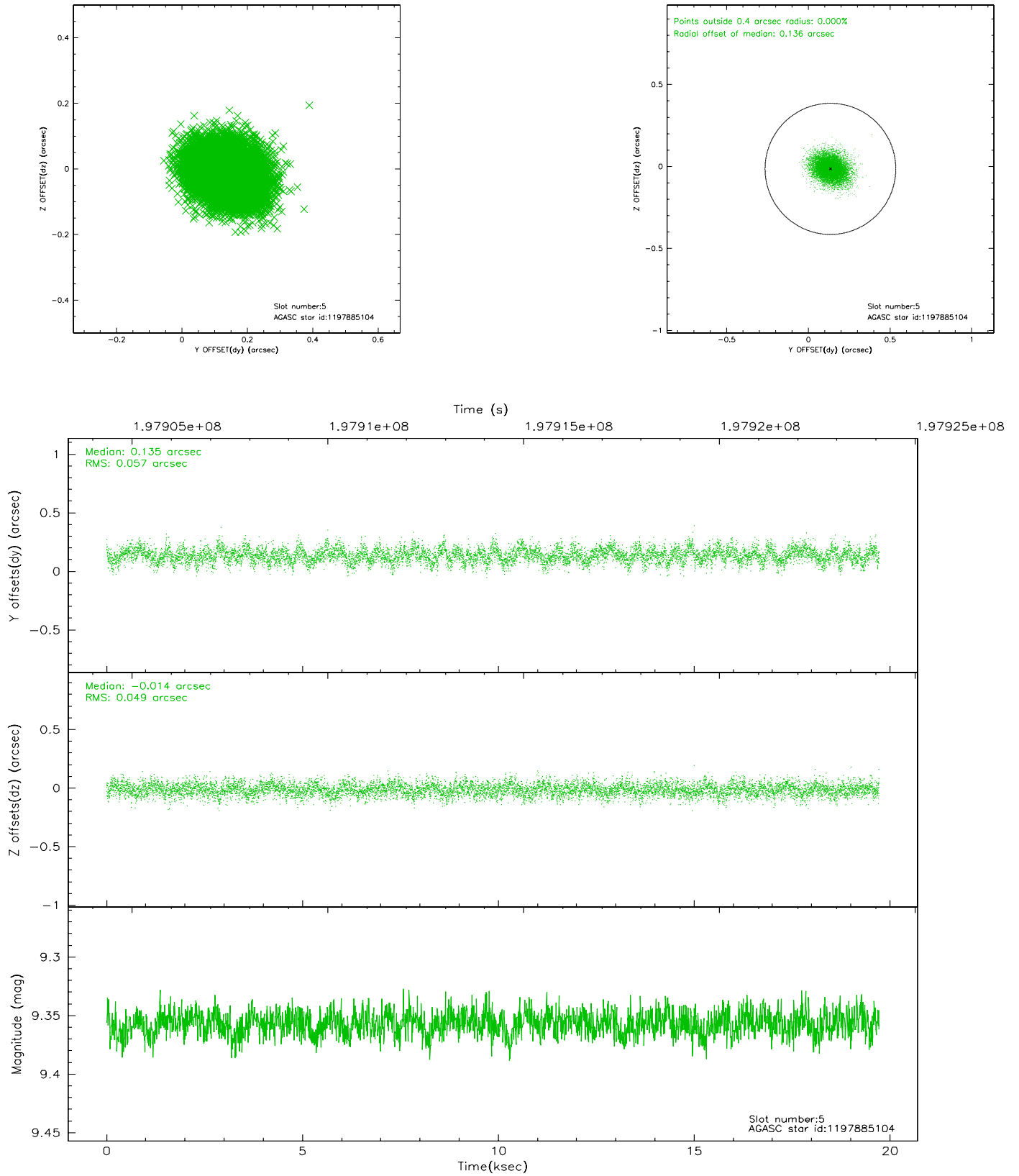
2.4.1 Slot 3



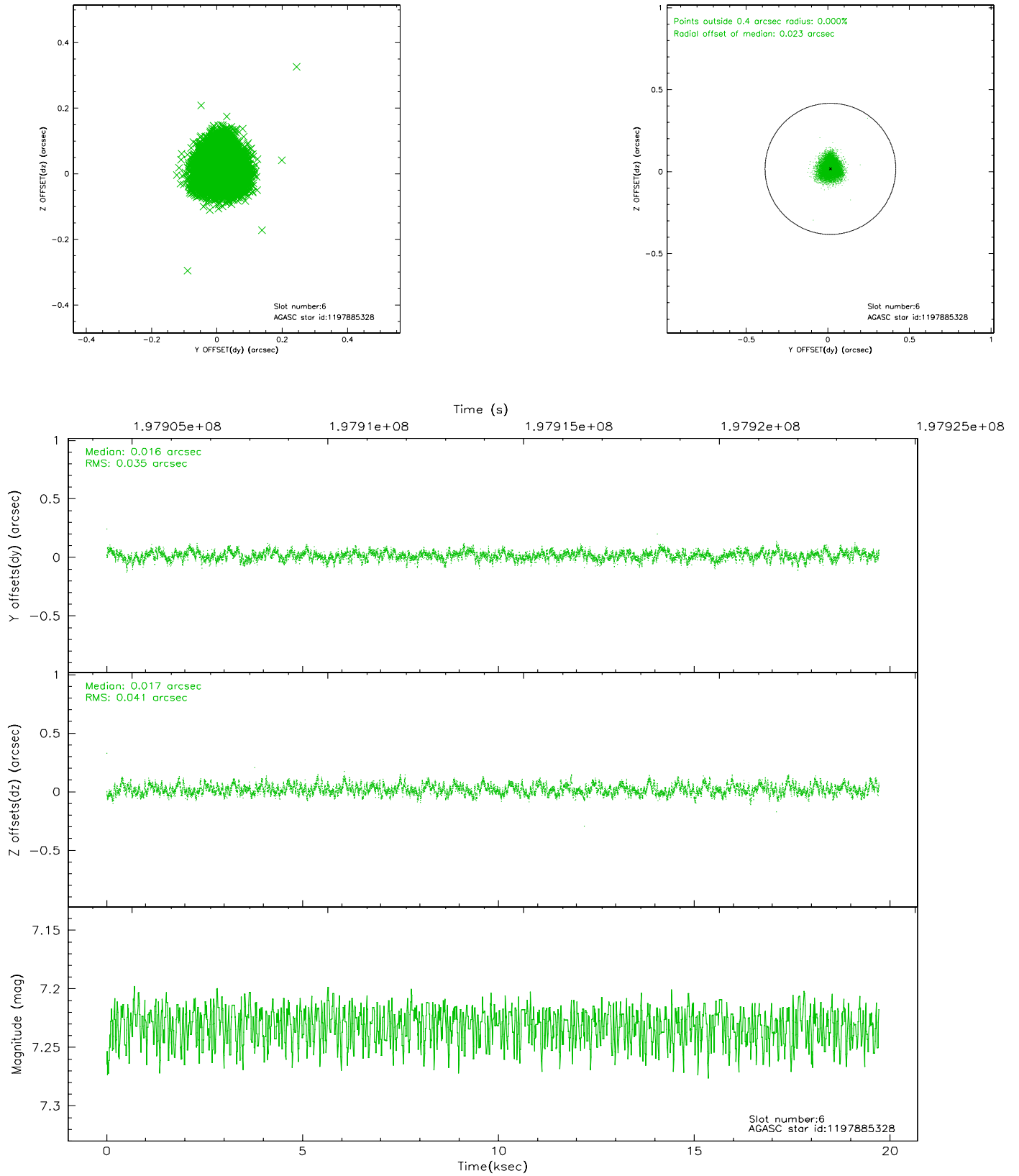
2.4.2 Slot 4



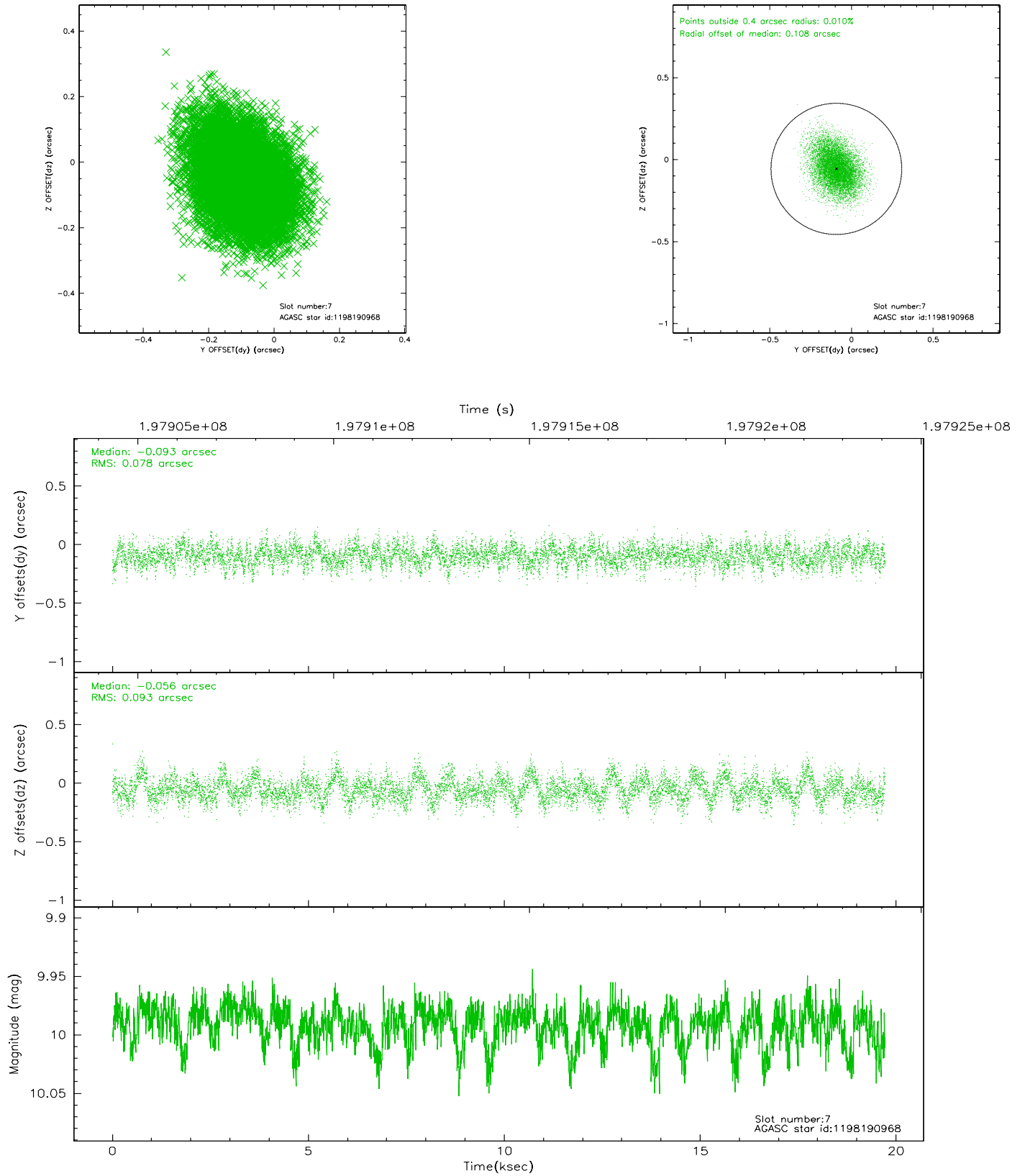
2.4.3 Slot 5



2.4.4 Slot 6

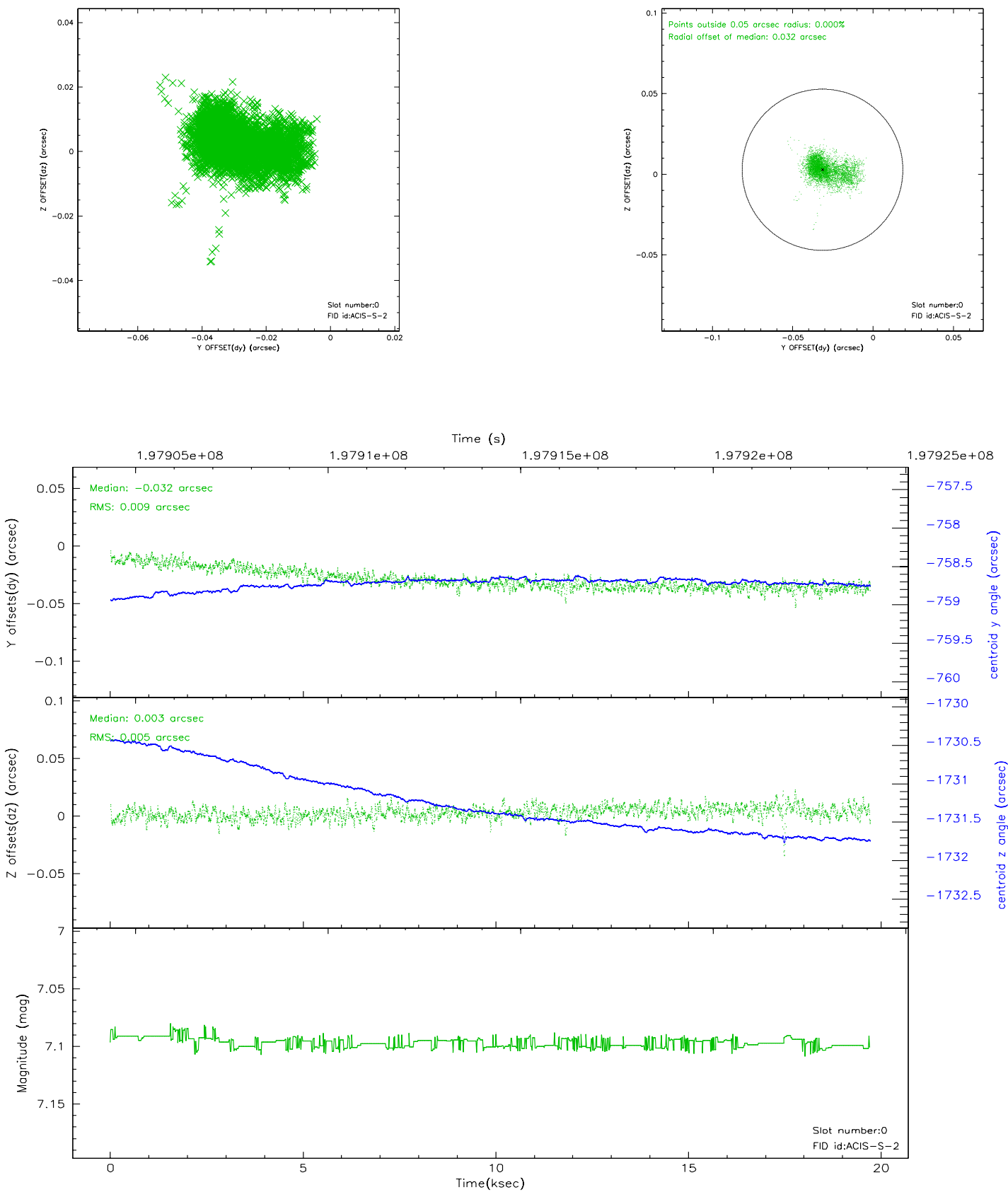


2.4.5 Slot 7

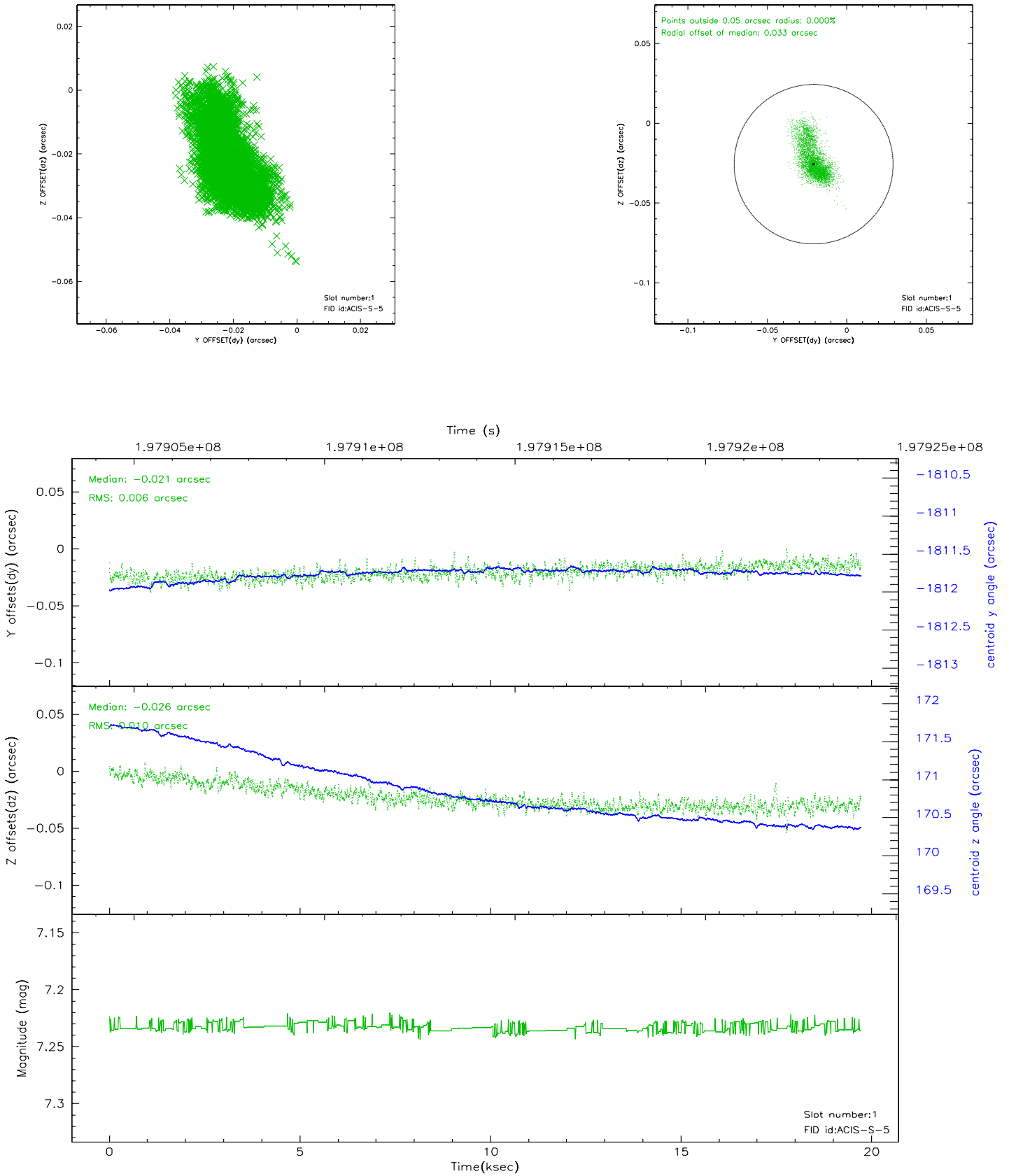


2.5 FID Slots

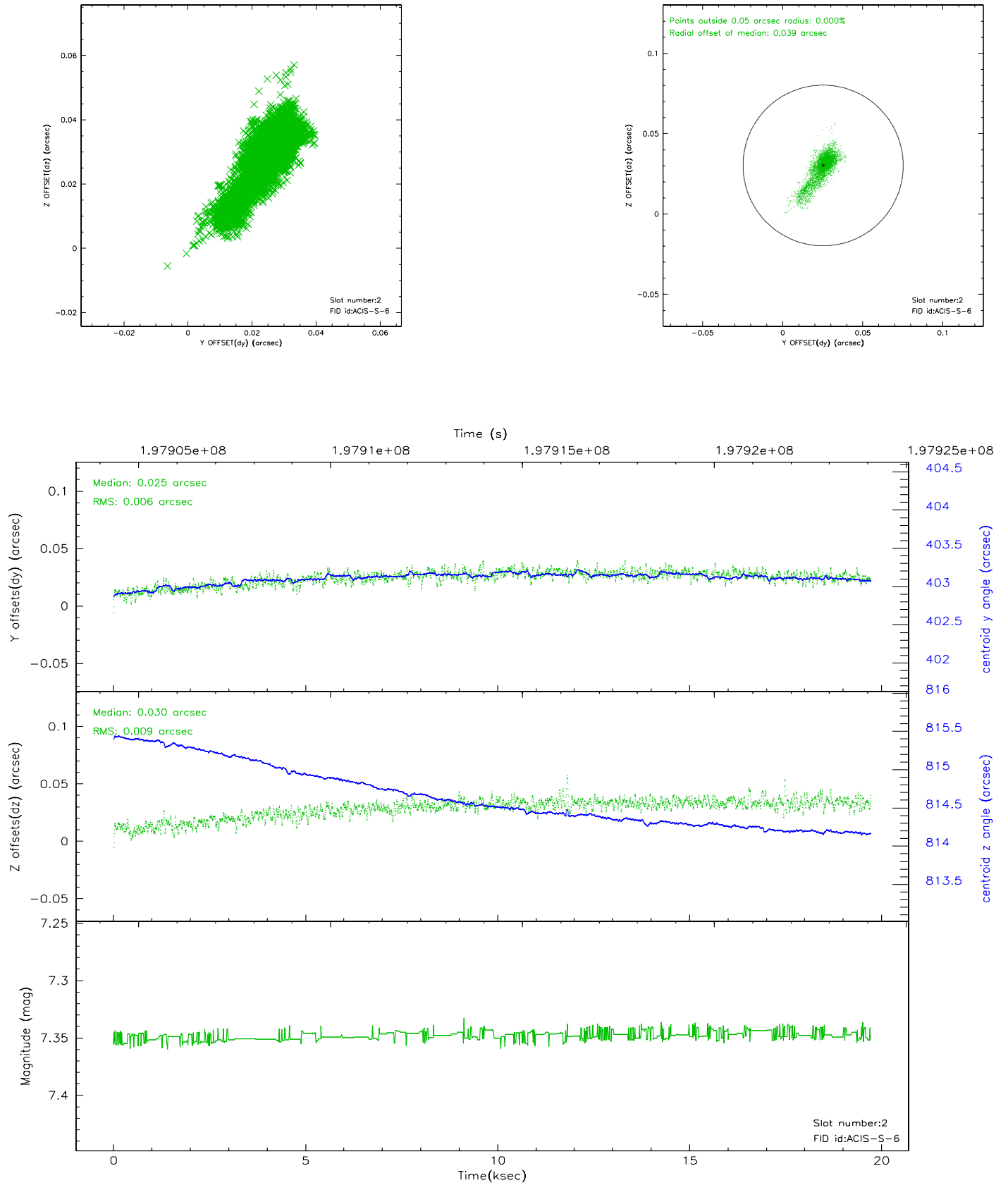
2.5.1 Slot 0



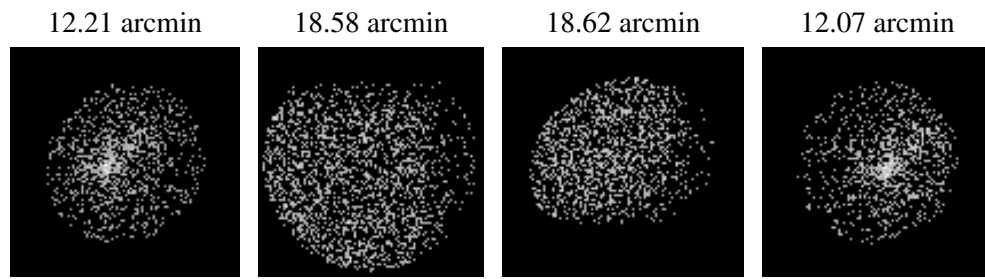
2.5.2 Slot 1



2.5.3 Slot 2



3 Point Sources



A Summary

A.1 Status

V&V Scientist	Jen Lauer
V&V Date (YYYY-MM-DD)	2006.05.25
V&V Edition	1
V&V Disposition and Status	OK
V&V Charge Time	19.663

A.2 Comments

Window constraint met.