

V&V Reference Report

L2 ASCDS Version : 8.2.1

Observation 50 - L2 Version 3

Chandra X-Ray Center

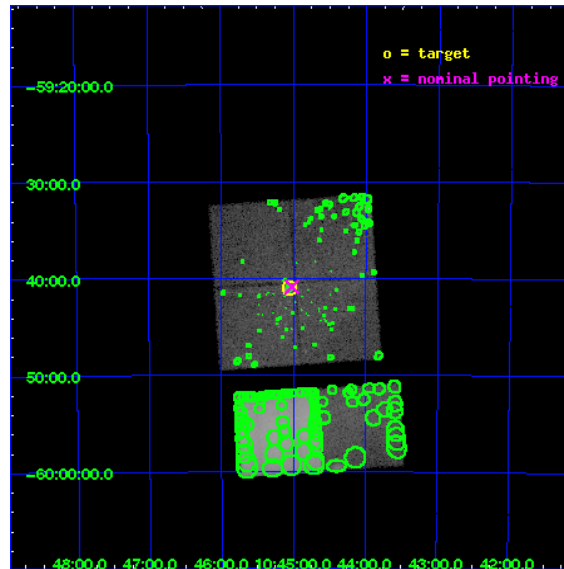
L2 Processing Date : Jan 13 2010

Contents

1	Front	2
2	OBI	3
2.1	OBI	3
2.1.1	Images	3
2.1.2	Bias	3
2.1.3	Parameters	4
2.1.4	Events	4
2.2	Compared Parameters	5
2.3	Aspect	6
2.4	Star Slots	9
2.4.1	Slot 3	9
2.4.2	Slot 4	10
2.4.3	Slot 5	11
2.4.4	Slot 6	12
2.4.5	Slot 7	13
2.5	FID Slots	14
2.5.1	Slot 0	14
2.5.2	Slot 1	15
2.5.3	Slot 2	16
3	Point Sources	17
A	Summary	18
A.1	Status	18
A.2	Comments	18

1 Front

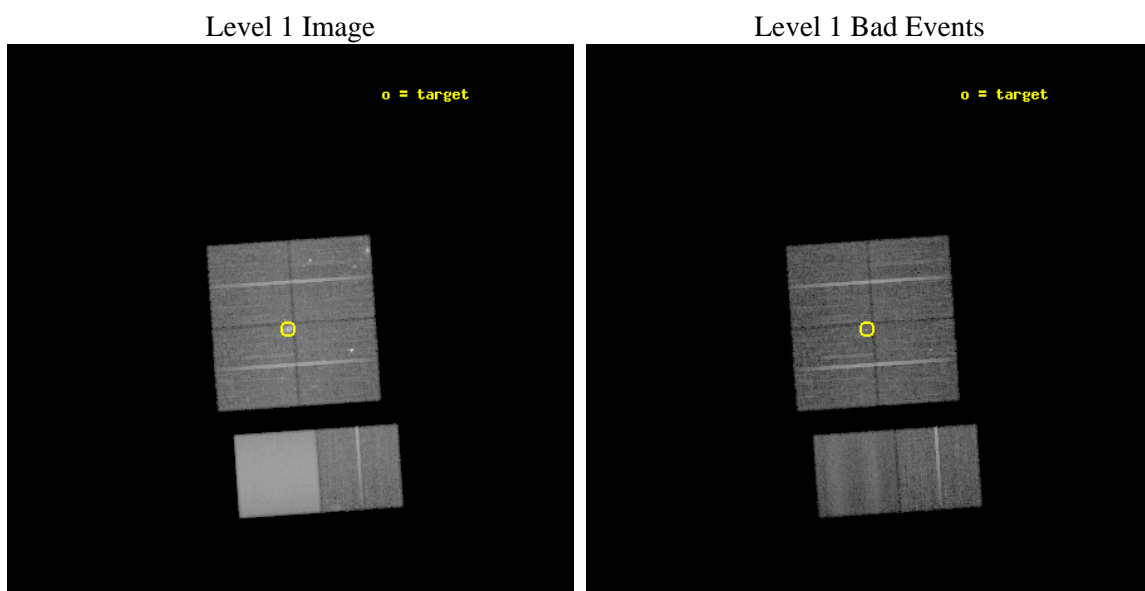
seq_num	290019	Sequence number
obs_id	50	Observation id
title	DEMONSTRATION IMAGE OF ETA CARINAE	Proposal title
observer	Dr. CXC Calibration	Principal investigator
object	ETA CARINAE	Source name
dtcycle	0	
cycle	P	events from which exps? Prim/Second/Both
ra_targ	161.265	Observer's specified target RA
dec_targ	-59.684167	Observer's specified target Dec
ra_nom	161.25514300427	Nominal RA
dec_nom	-59.681531378108	Nominal Dec
roll_nom	176.0894566608	Nominal Roll
revision	3	Processing version of data
ontime	12035.200011209	Sum of GTIs [s]
livetime	11882.803061939	Livetime [s]
ontime0	12035.200011209	Sum of GTIs [s]
ontime1	12035.200011209	Sum of GTIs [s]
ontime2	12035.200011209	Sum of GTIs [s]
ontime3	12035.200011209	Sum of GTIs [s]
ontime6	12035.195748821	Sum of GTIs [s]
ontime7	12035.200011209	Sum of GTIs [s]
l2events	574112	Number of level 2 events



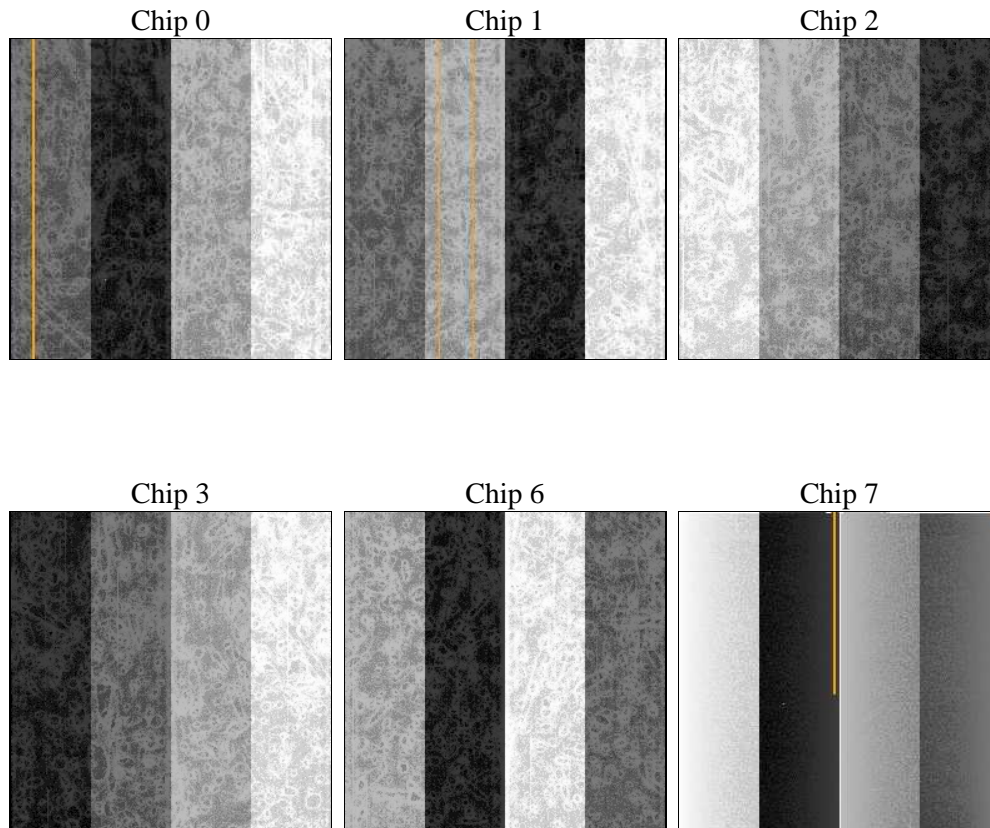
2 OBI

2.1 OBI

2.1.1 Images



2.1.2 Bias



2.1.3 Parameters

obi_num	0	Obi number	sched_exp_time	13000.000000	Scheduled observation exposure time
ascdsver	8.2.1	ASCDS version number	ontime	12035.200011209	Sum of GTIs [s]
caldsver	4.1.5	 	ontime0	12035.200011209	Sum of GTIs [s]
date	2010-01-13T07:14:34	Date and time of file creation	ontime1	12035.200011209	Sum of GTIs [s]
revision	3	Processing version of data	ontime2	12035.200011209	Sum of GTIs [s]
			ontime3	12035.200011209	Sum of GTIs [s]
			ontime6	12035.195748821	Sum of GTIs [s]
			ontime7	12035.200011209	Sum of GTIs [s]
			l1events	1223836	Number of level 1 events

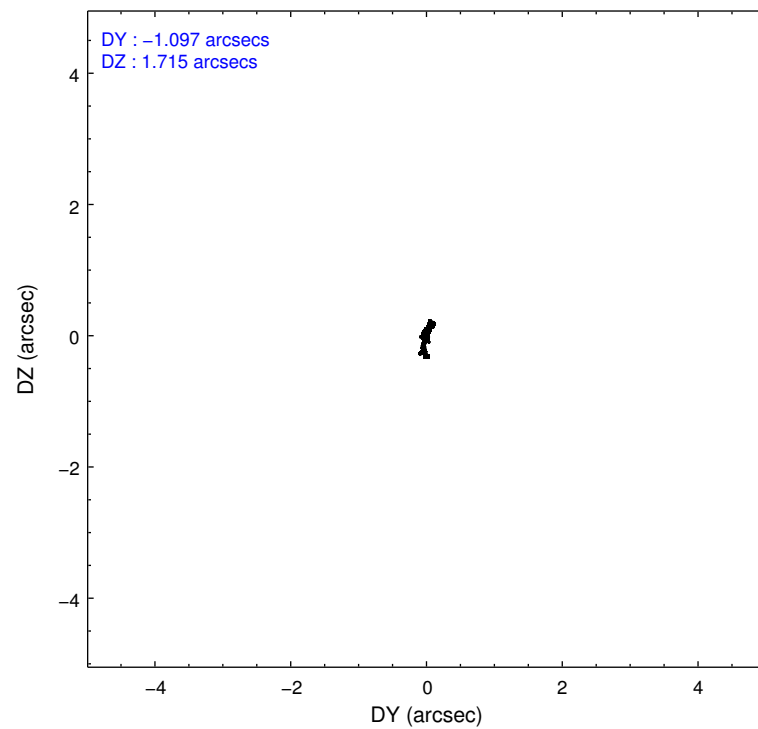
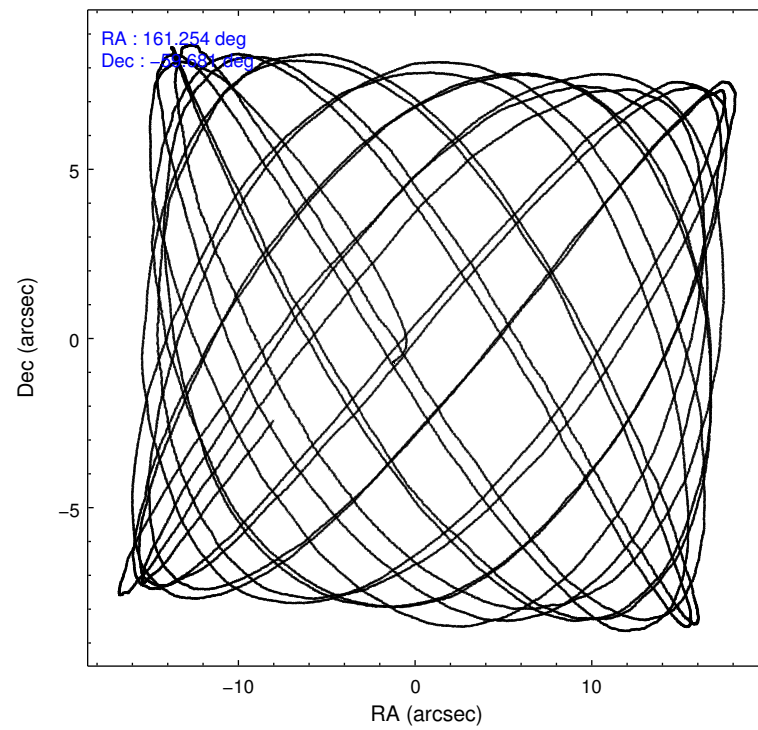
2.1.4 Events

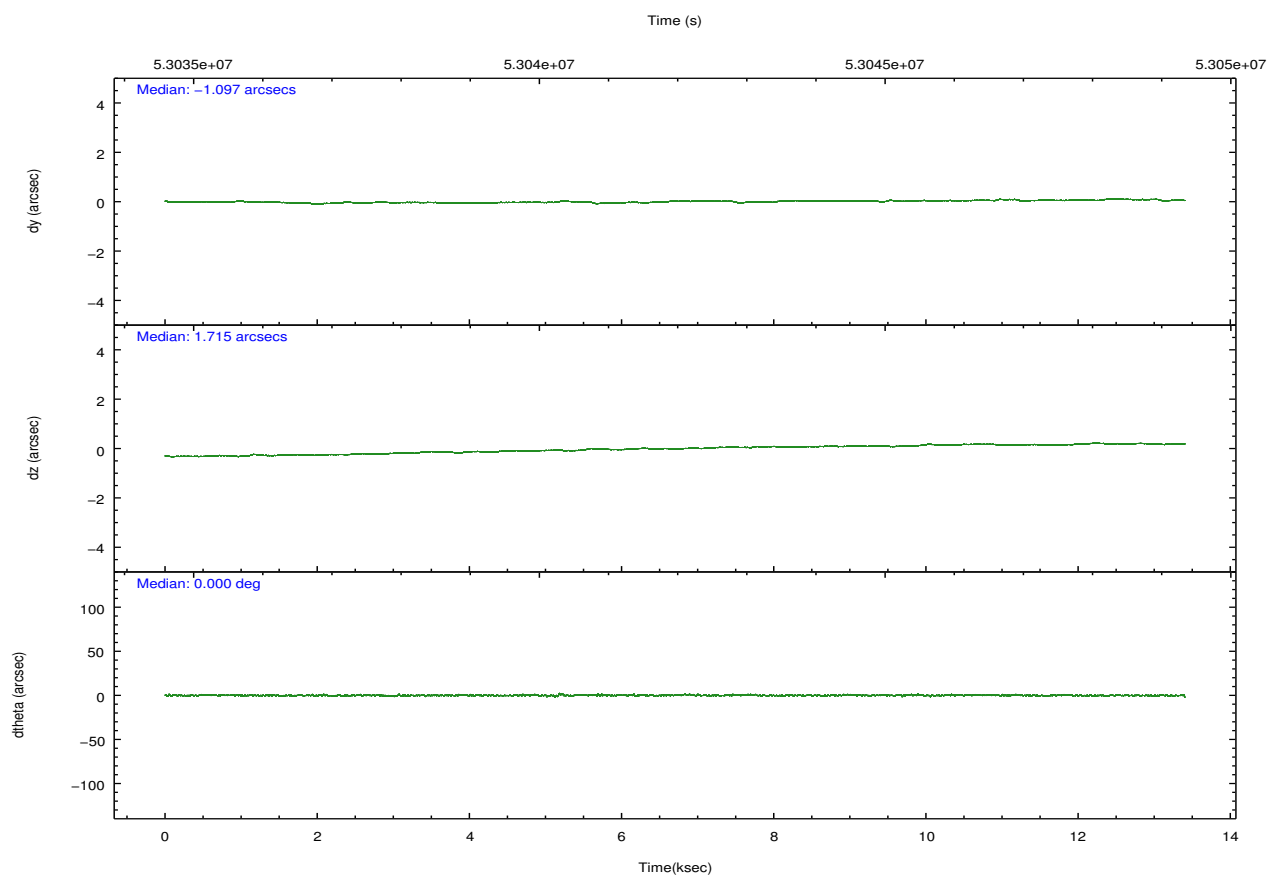
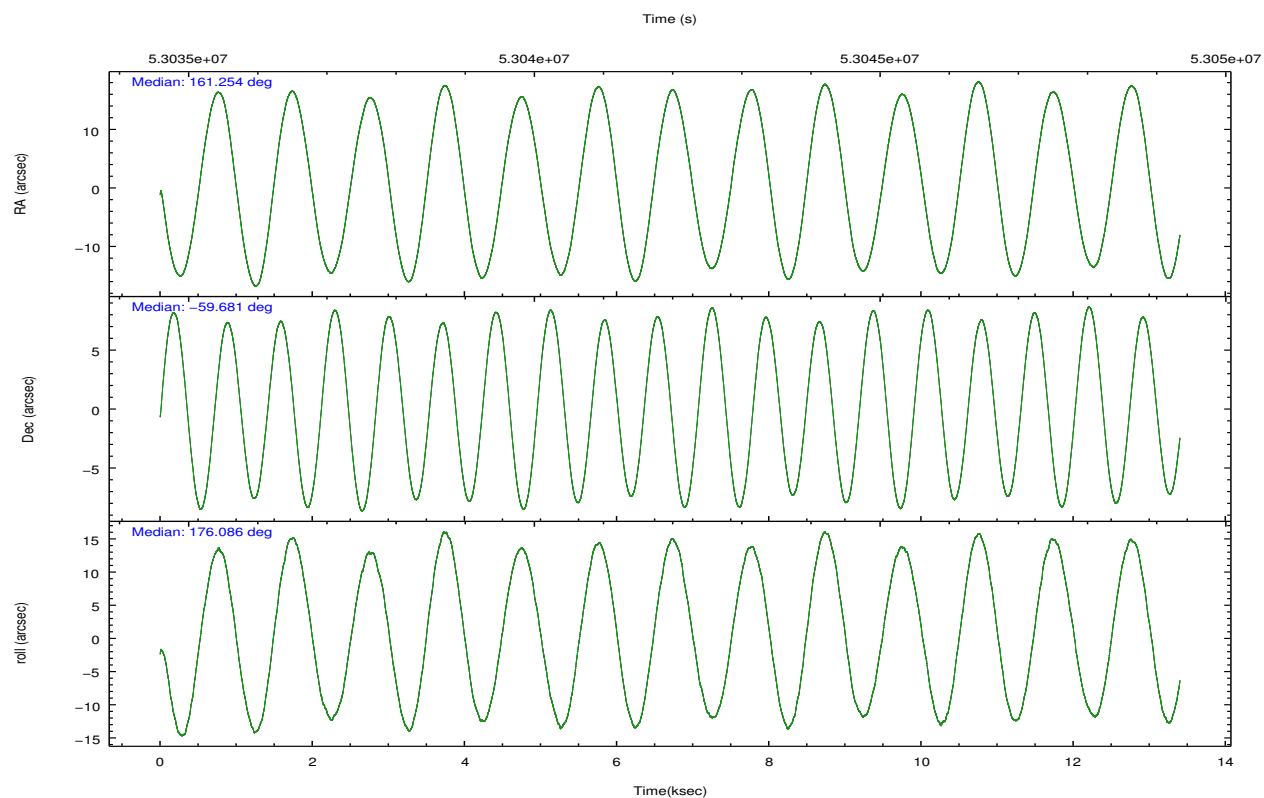
	ccd 0	ccd 1	ccd 2	ccd 3	ccd 6	ccd 7		ccd 0	ccd 1	ccd 2	ccd 3	ccd 6	ccd 7
level 1 events	139251	125893	146179	147215	148631	516667	grade 0 events	21748	13405	25536	26611	23960	52476
rejected events	105924	102053	108453	106579	110193	104949		15%	10%	17%	18%	16%	10%
rejected %	76%	81%	74%	72%	74%	20%	grade 1 events	119	75	306	259	84	146
								0%	0%	0%	0%	0%	0%
							grade 2 events	6047	5160	6640	7623	9118	67952
								4%	4%	4%	5%	6%	13%
							grade 3 events	1523	1396	1520	1605	1238	38250
								1%	1%	1%	1%	0%	7%
							grade 4 events	1494	1330	1475	1489	1175	34748
								1%	1%	1%	1%	0%	6%
							grade 5 events	2784	2977	2547	3152	2768	10623
								1%	2%	1%	2%	1%	2%
							grade 6 events	2521	2558	2575	3329	2960	218407
								1%	2%	1%	2%	1%	42%
							grade 7 events	103015	98992	105580	103147	107328	94065
								73%	78%	72%	70%	72%	18%

2.2 Compared Parameters

Parameter	Planned	Actual	Parameter	Planned	Actual
Instrument	ACIS	ACIS	Obspar format version number	6	6
Detector	ACIS-012367	ACIS-012367	Obspar file type	PREDICTED	ACTUAL
Grating	NONE	NONE	Obspar update status	NONE	UPDATED
Data mode	FAINT	FAINT	Number of optional ACIS chips dropped	0	0
Observation mode	POINTING	POINTING	On-chip summing requested	N	N
Pointing RA	161.305409	161.2551430042738	Subarray requested	NONE	NONE
Pointing Dec	-59.669915	-59.6815313781076	Alternating exposures requested	N	N
Pointing Roll	175.924157	176.0894566607969	Primary exposure time	0.000000	3.2
SIM focus pos (mm)	-0.782348	-0.7809083437167272			
SIM defocus (mm)	0	0.001439871863259334			
SIM translation stage pos (mm)	-233.592463	-233.5874344608287			
SIM translation stage offset (mm)	0	-0.005018542100998502			
Observation start time	53035664.184000	53034555.892901			
Observation start date	1999-09-06T20:06:40	1999-09-06T19:49:15			
Observation end time	53048664.184000	53048797.755912			
Observation end date	1999-09-06T23:43:20	1999-09-06T23:46:37			
Read mode	TIMED	TIMED			

2.3 Aspect



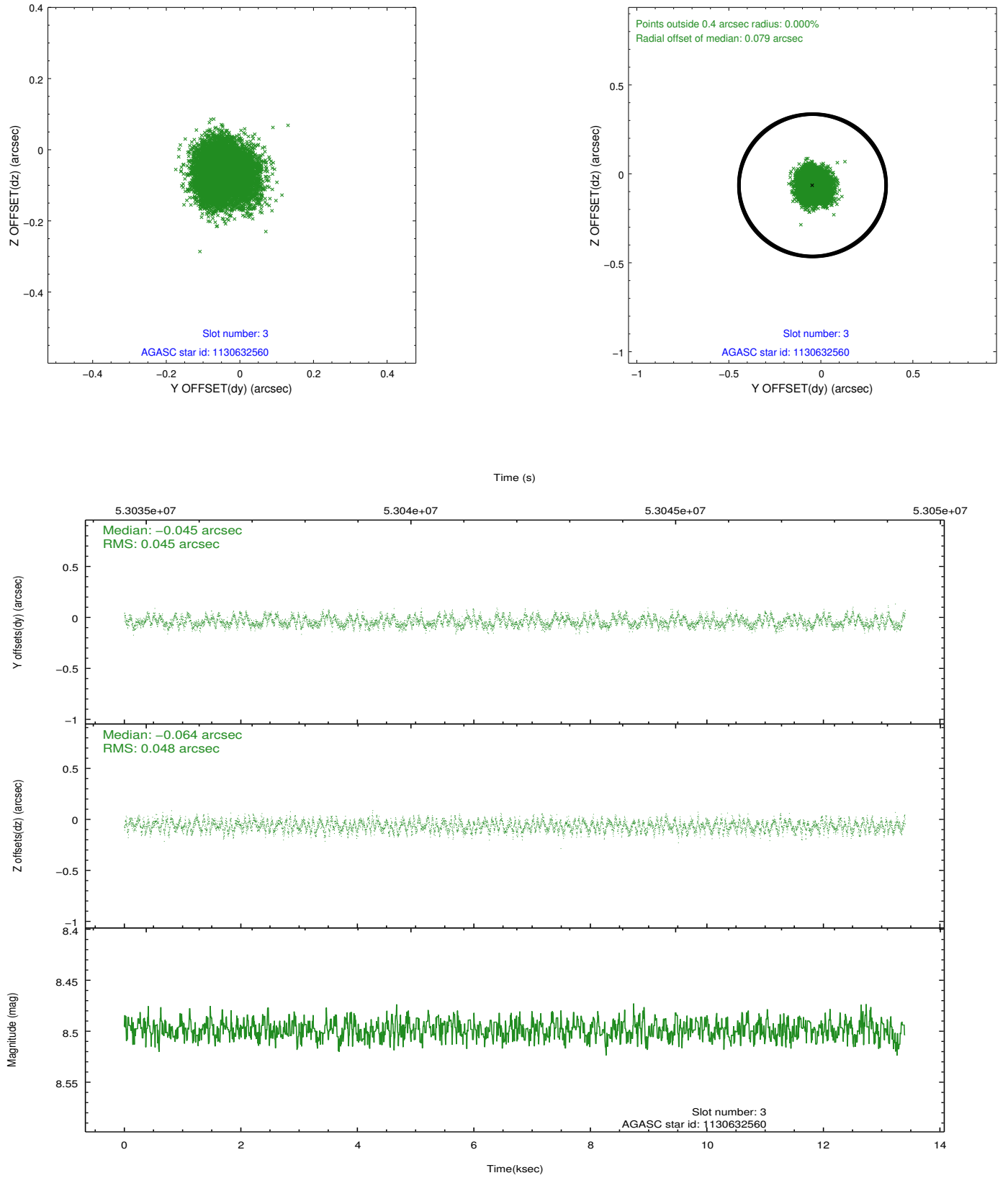


Slot Statistics

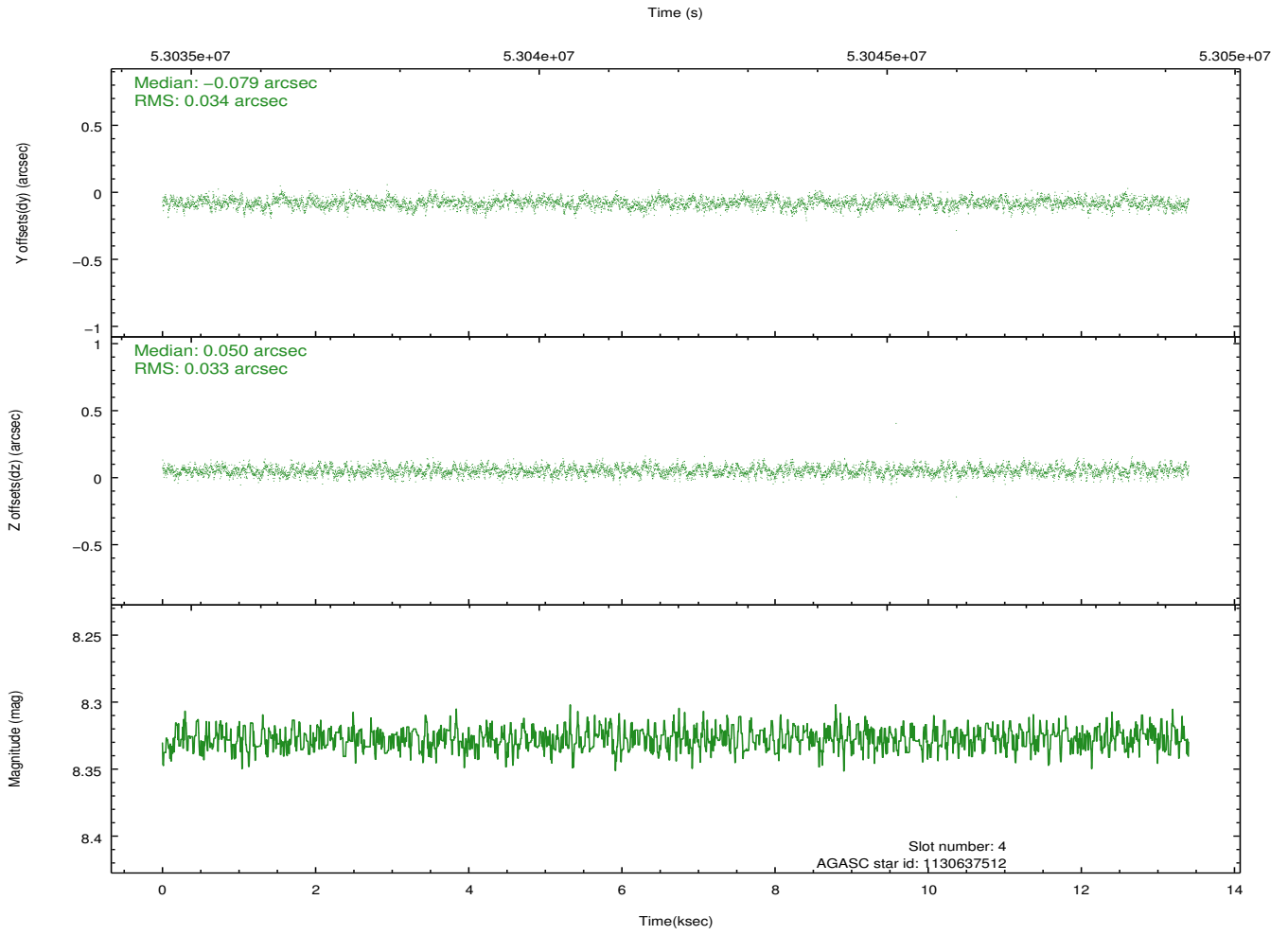
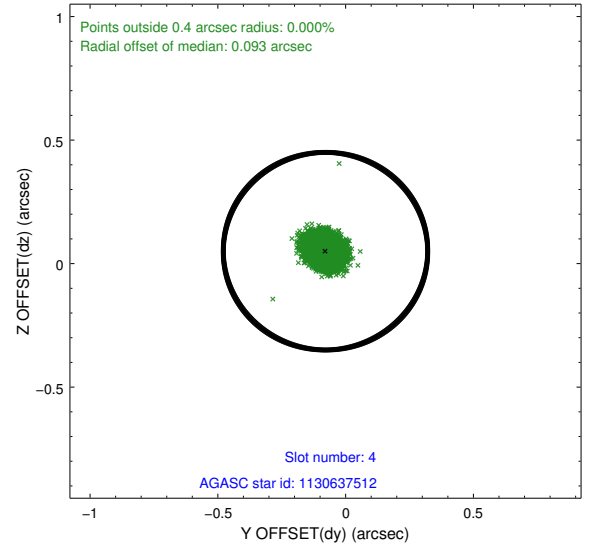
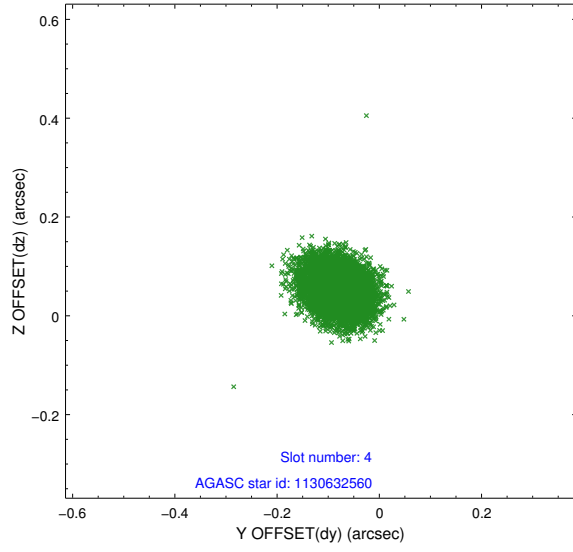
slot	status	id	mag	n_pts	med_dy	med_dz	dr1	dr2	ra	dec	mean_y	mean_z
0	FID	ACIS-I-1	7.26	6538	-0.002	0.025	0.009	0.016	0.000000	0.000000	940.96	-824.95
1	FID	ACIS-I-4	7.23	6539	0.094	0.007	0.008	0.013	0.000000	0.000000	2161.24	1074.73
2	FID	ACIS-I-5	7.23	6539	-0.190	0.038	0.007	0.011	0.000000	0.000000	-1807.01	1072.91
3	GUIDE	1130632560	8.50	6537	-0.045	-0.064	0.071	0.107	162.097550	-59.214101	-1341.34	-1731.88
4	GUIDE	1130637512	8.33	6538	-0.079	0.050	0.051	0.082	160.260704	-59.344159	1993.29	-1018.44
5	GUIDE	1130628248	8.83	6537	0.125	0.055	0.068	0.111	160.092155	-59.960260	2104.03	1218.12
6	GUIDE	1130645296	9.06	6536	0.001	0.034	0.071	0.113	162.541185	-59.548371	-2220.39	-575.58
7	GUIDE	1174038520	9.71	6532	0.000	-0.075	0.105	0.166	161.745605	-60.289353	-944.10	2171.04

2.4 Star Slots

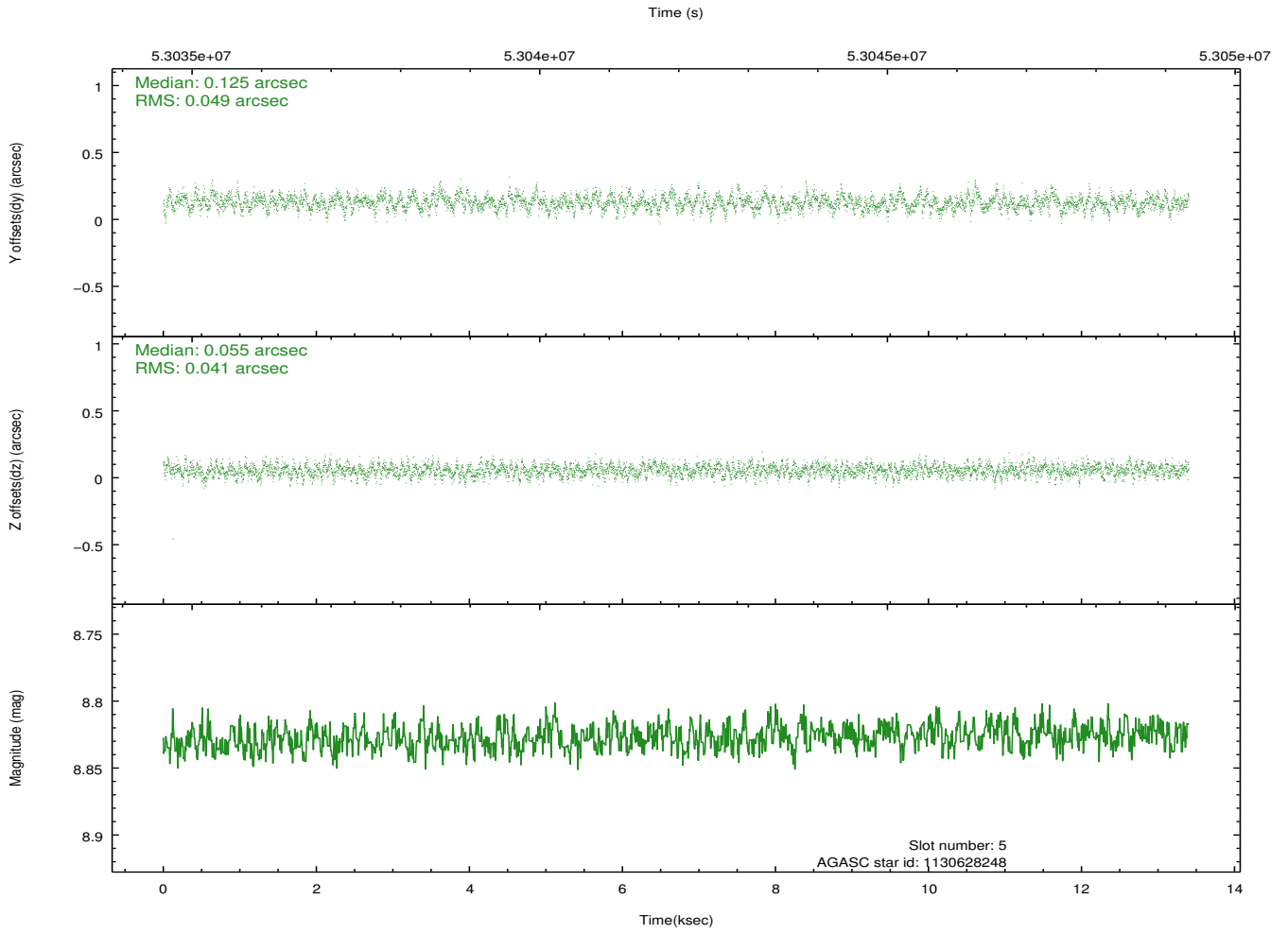
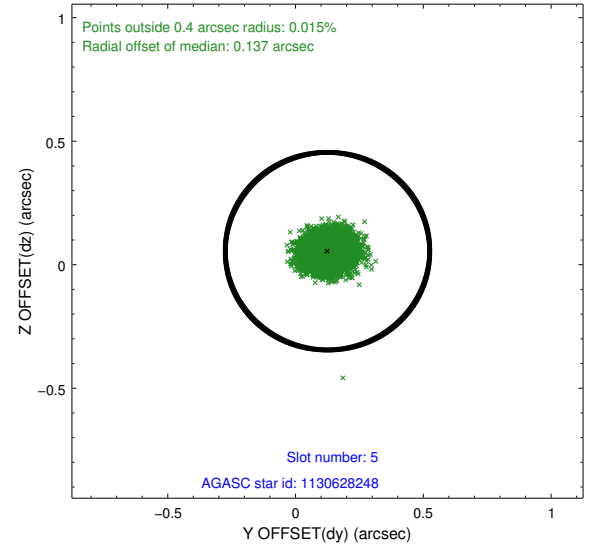
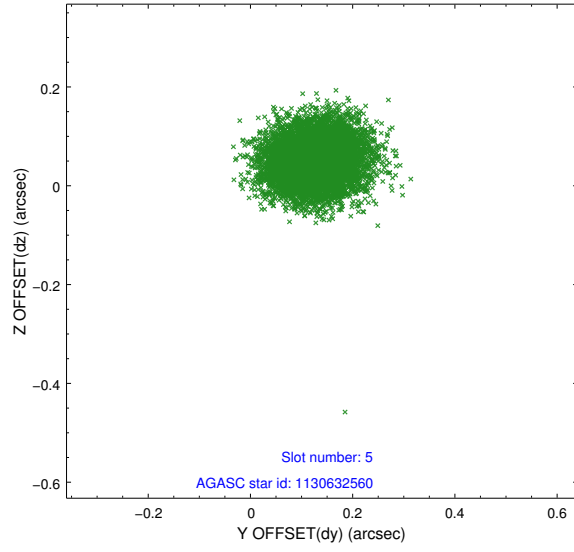
2.4.1 Slot 3



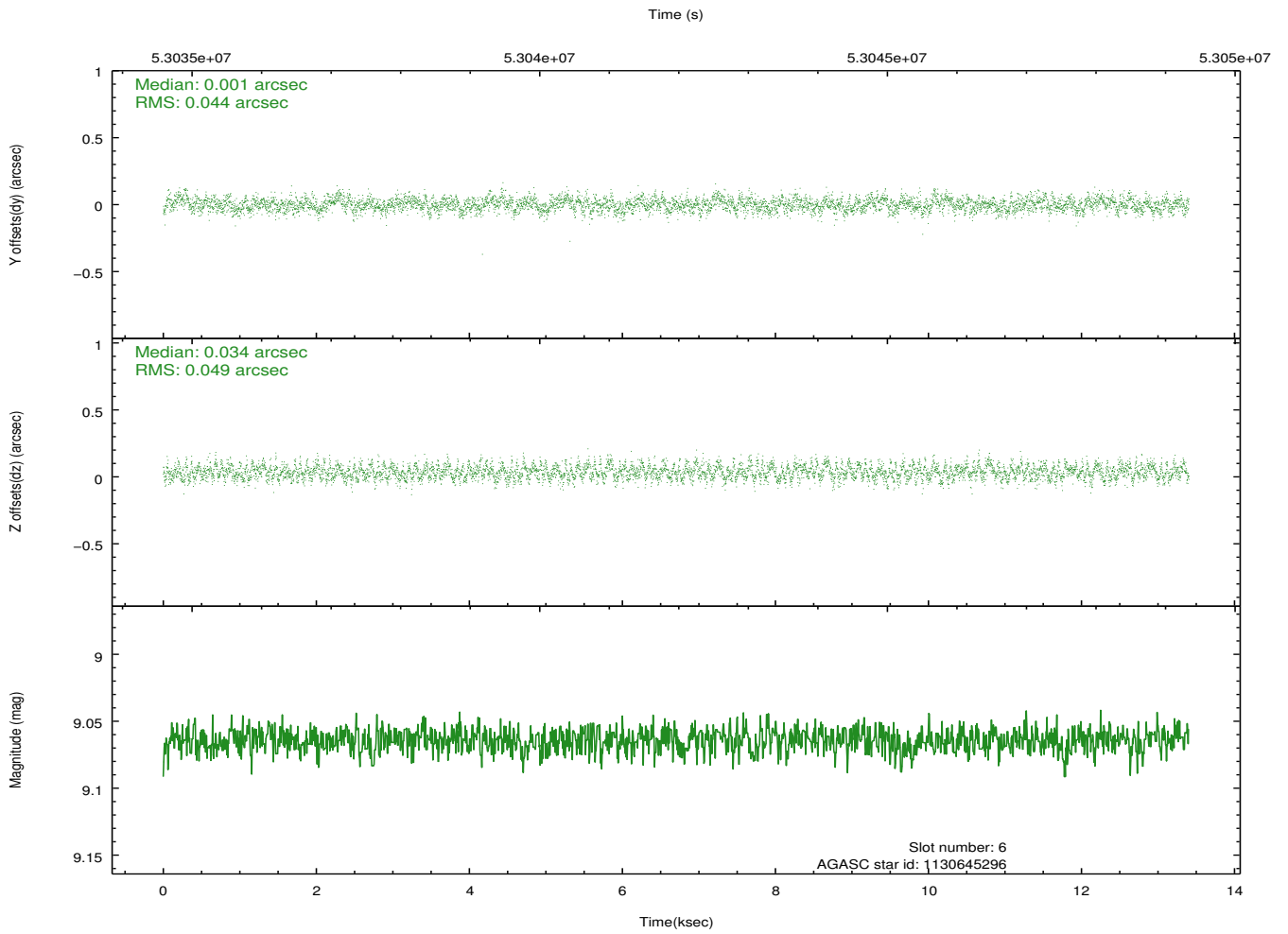
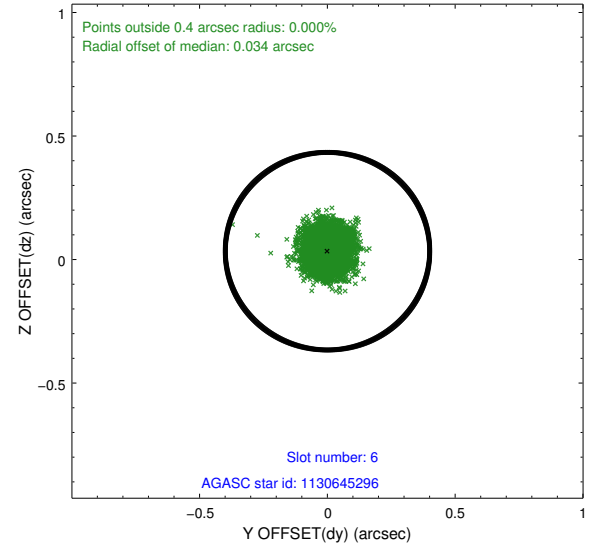
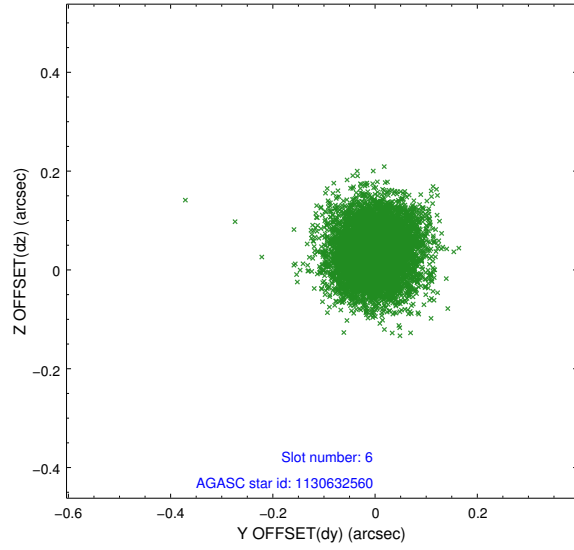
2.4.2 Slot 4



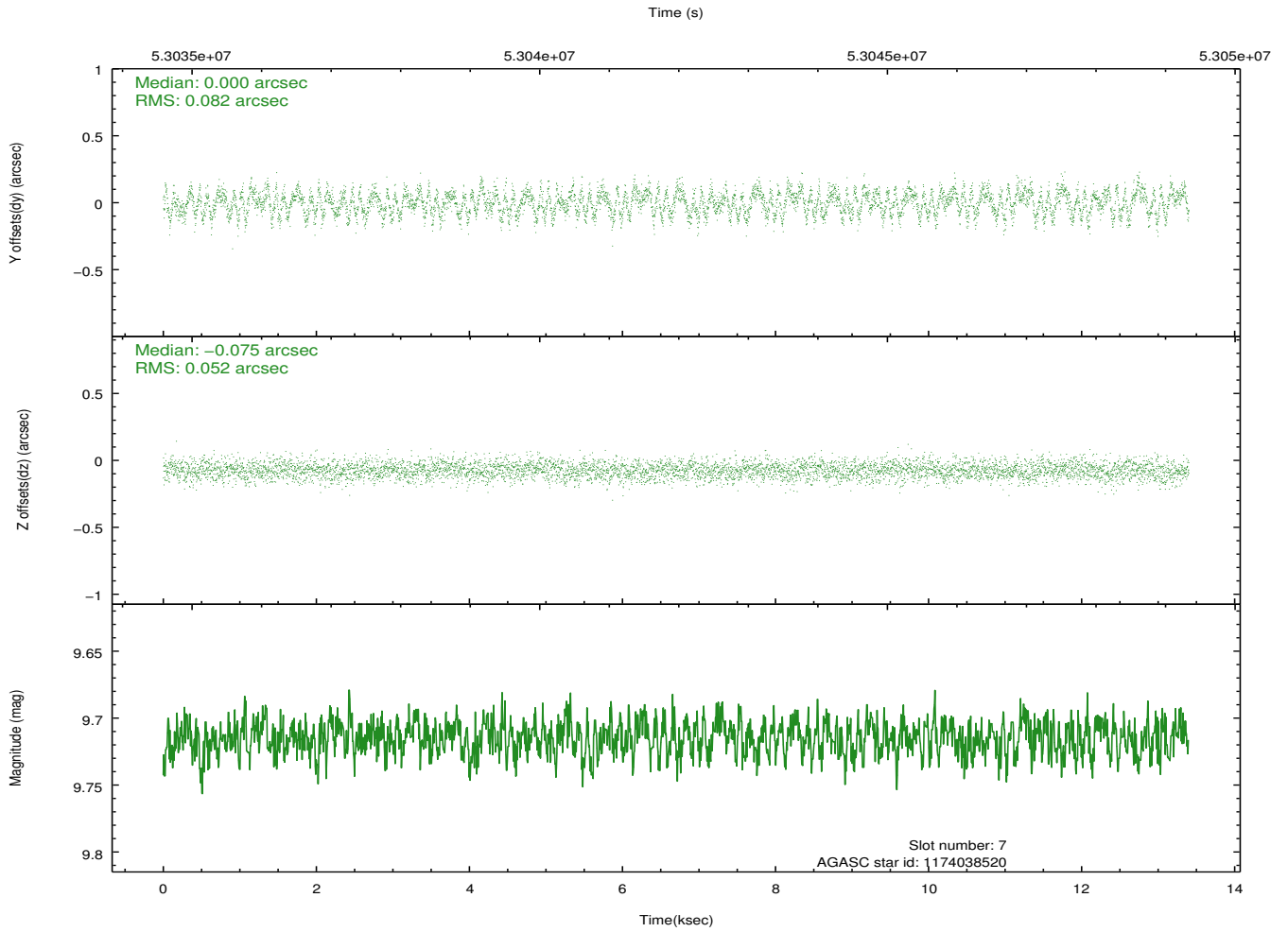
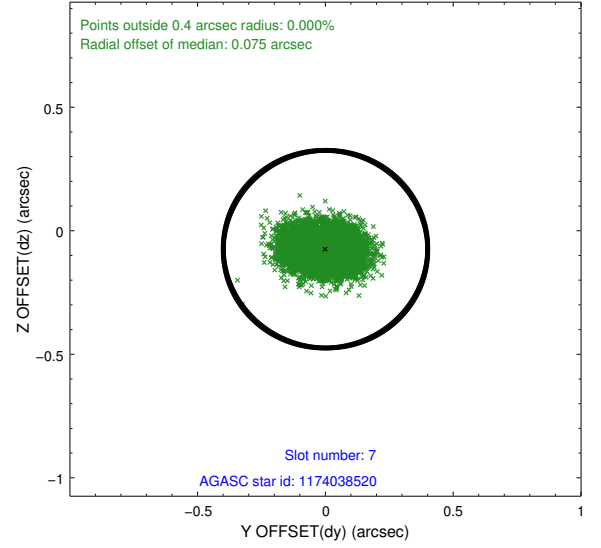
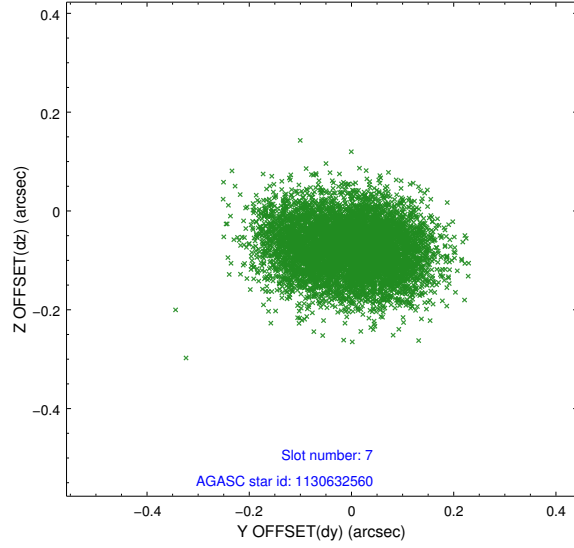
2.4.3 Slot 5



2.4.4 Slot 6

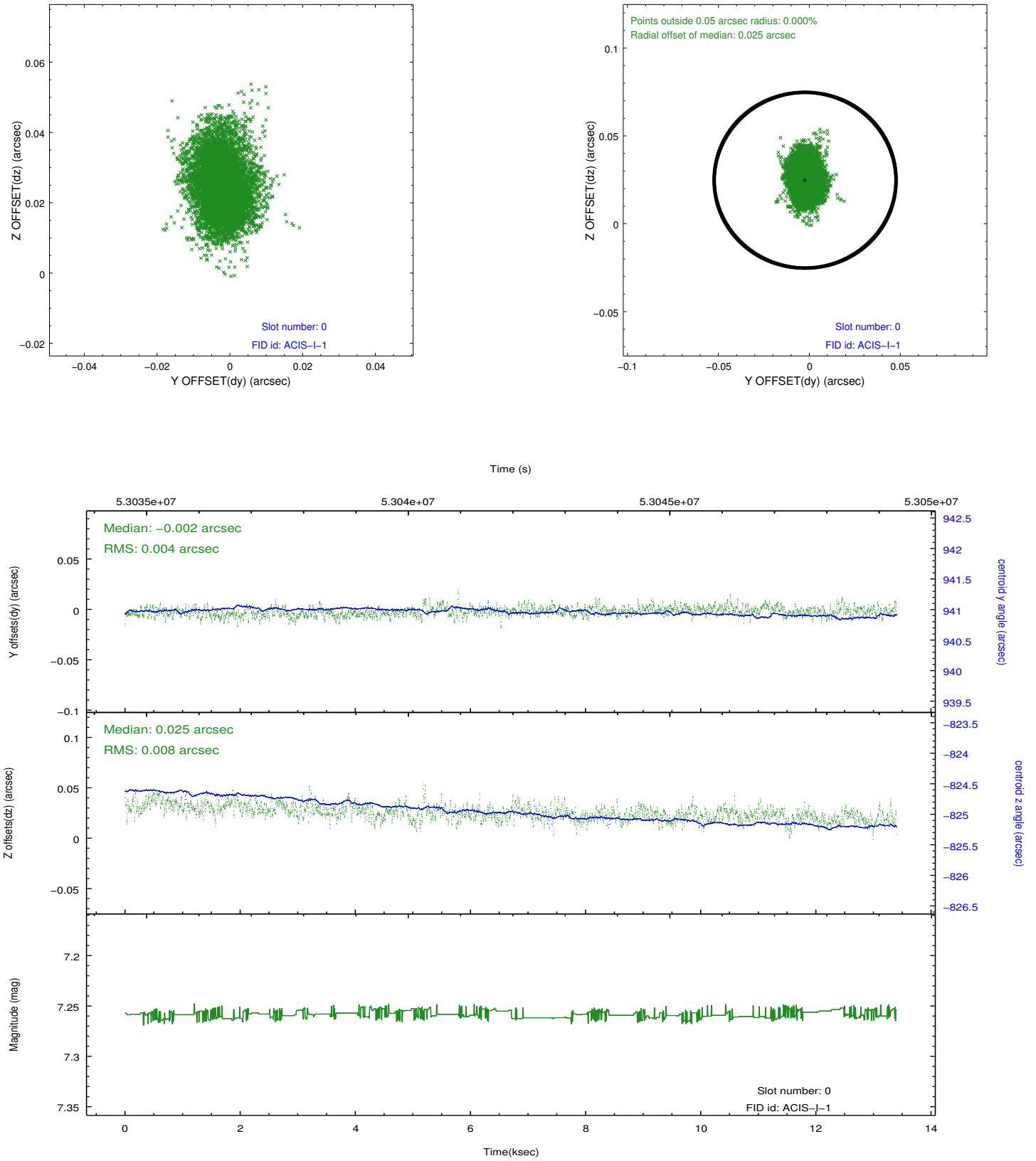


2.4.5 Slot 7

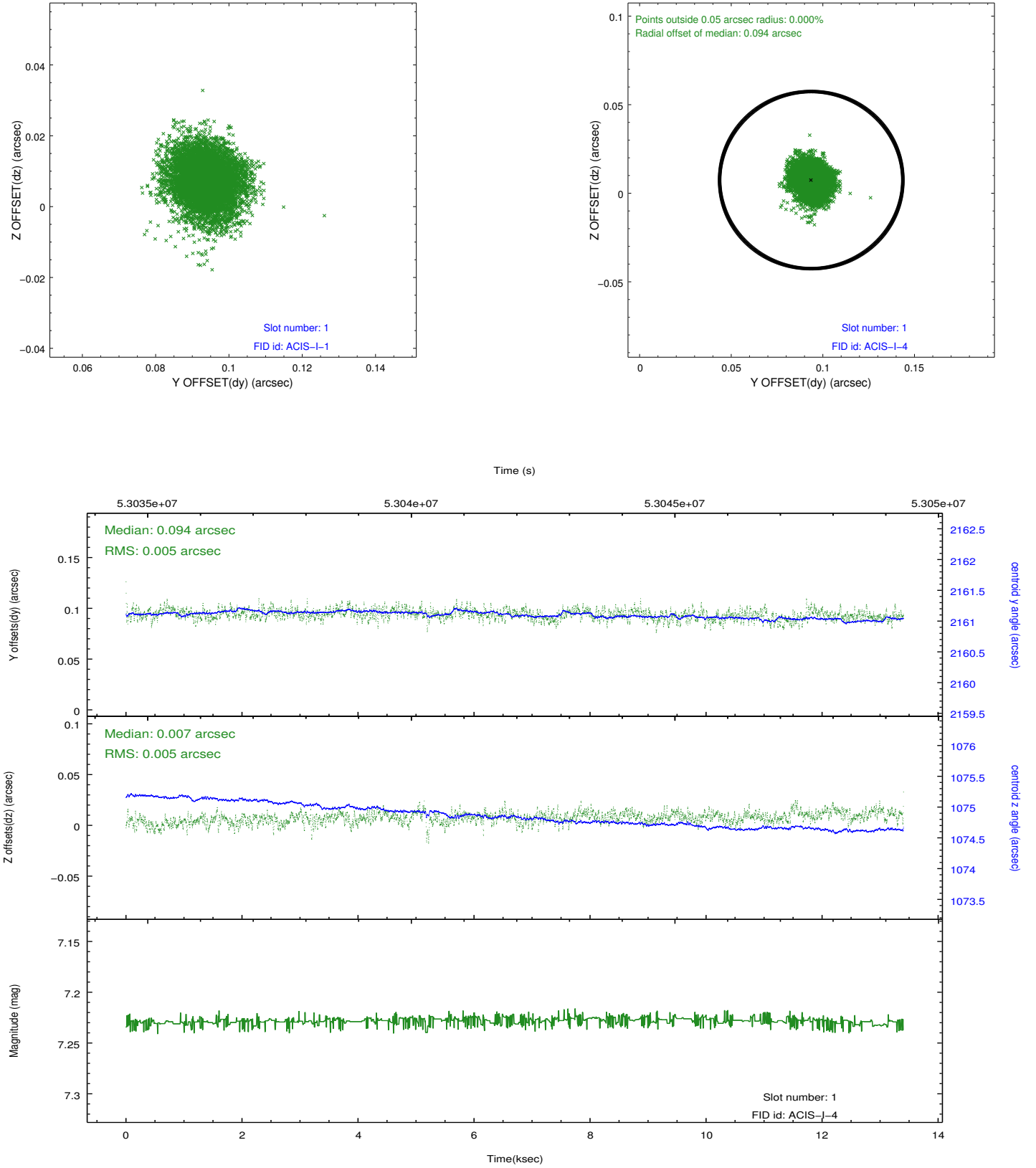


2.5 FID Slots

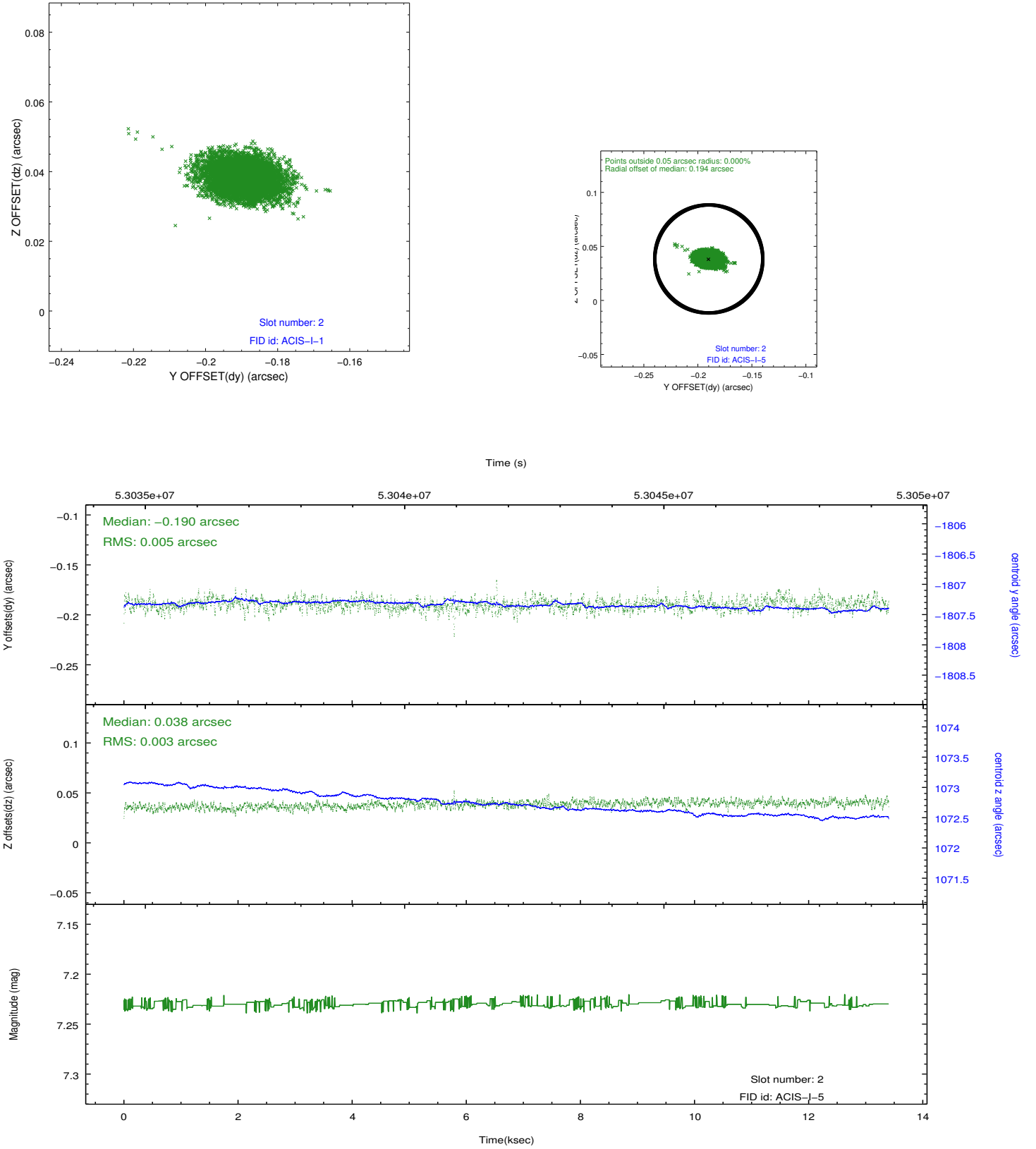
2.5.1 Slot 0



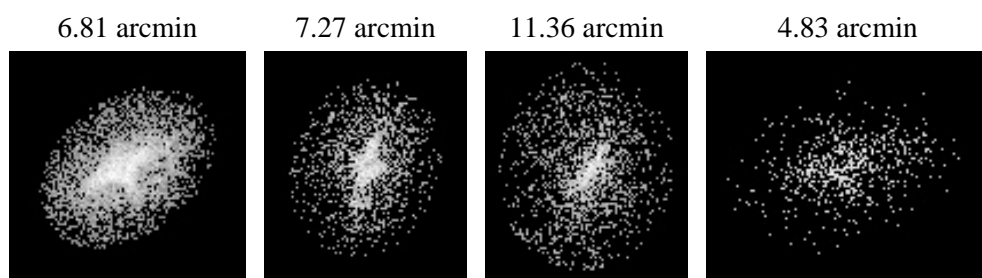
2.5.2 Slot 1



2.5.3 Slot 2



3 Point Sources



A Summary

A.1 Status

V&V Scientist	Joy Nichols
V&V Date (YYYY-MM-DD)	2010.02.09
V&V Edition	1
V&V Disposition and Status	OK
V&V Charge Time	12.038

A.2 Comments

Focal plane temperature is approximately -100 C degrees during this observation. ACIS has not been calibrated at this temperature, because the focal plane temperature of -119.7 C degrees became the standard shortly after the start of the mission. Both front and back illuminated

chips are affected.

The ACIS spectral response calibration is less accurate at these warmer temperatures than it is at -119.7 C. Users whose science objectives depend

on the most accurate spectral response (ie: fitting line-rich spectra) may

notice an effect. Users whose science objectives do not depend on the most

accurate spectral response should not notice an effect. This reprocessing

of the data applies no CTI correction because none is available for this

temperature.