

V&V Reference Report

L2 ASCDS Version : 7.6.7.1

Observation 4970 - L2 Version 001
Chandra X-Ray Center

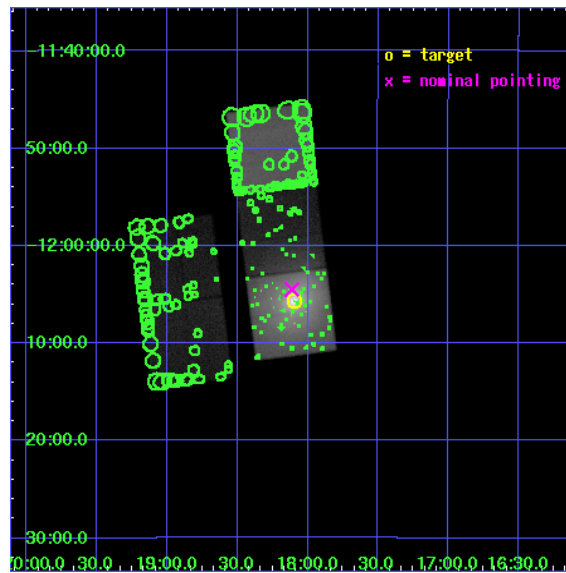
L2 Processing Date : Apr 14 2006

Contents

1	Front	2
2	OBI	3
2.1	OBI	3
2.1.1	Images	3
2.1.2	Bias	3
2.1.3	Parameters	4
2.1.4	Events	4
2.2	Compared Parameters	5
2.3	Aspect	6
2.4	Star Slots	9
2.4.1	Slot 3	9
2.4.2	Slot 5	10
2.4.3	Slot 6	11
2.4.4	Slot 7	12
2.5	FID Slots	13
2.5.1	Slot 0	13
2.5.2	Slot 1	14
2.5.3	Slot 2	15
3	Point Sources	16
A	Summary	17
A.1	Status	17
A.2	Comments	17

1 Front

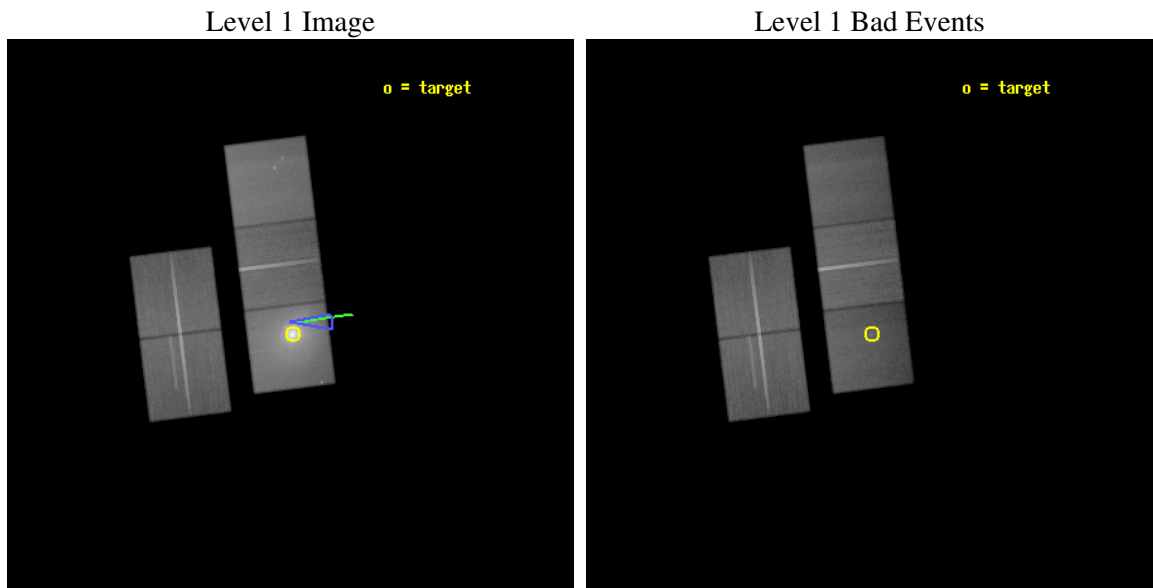
seq_num	800458
obs_id	4970
title	A Deep Look at the radio-ICM interaction in the powerful radio galaxy Hydra A
observer	Prof. Brian McNamara
object	Hydra A
dtcycle	0
cycle	P
ra_targ	139.52375
dec_targ	-12.095139
ra_nom	139.52808492297
dec_nom	-12.07483484335
roll_nom	82.966108171377
revision	3
ontime	100126.89980748
livetime	98818.668149147
ontime2	100114.3359465
ontime3	100111.19494632
ontime5	100126.89980748
ontime6	100092.3491348
ontime7	100126.89980748
l2events	1713732



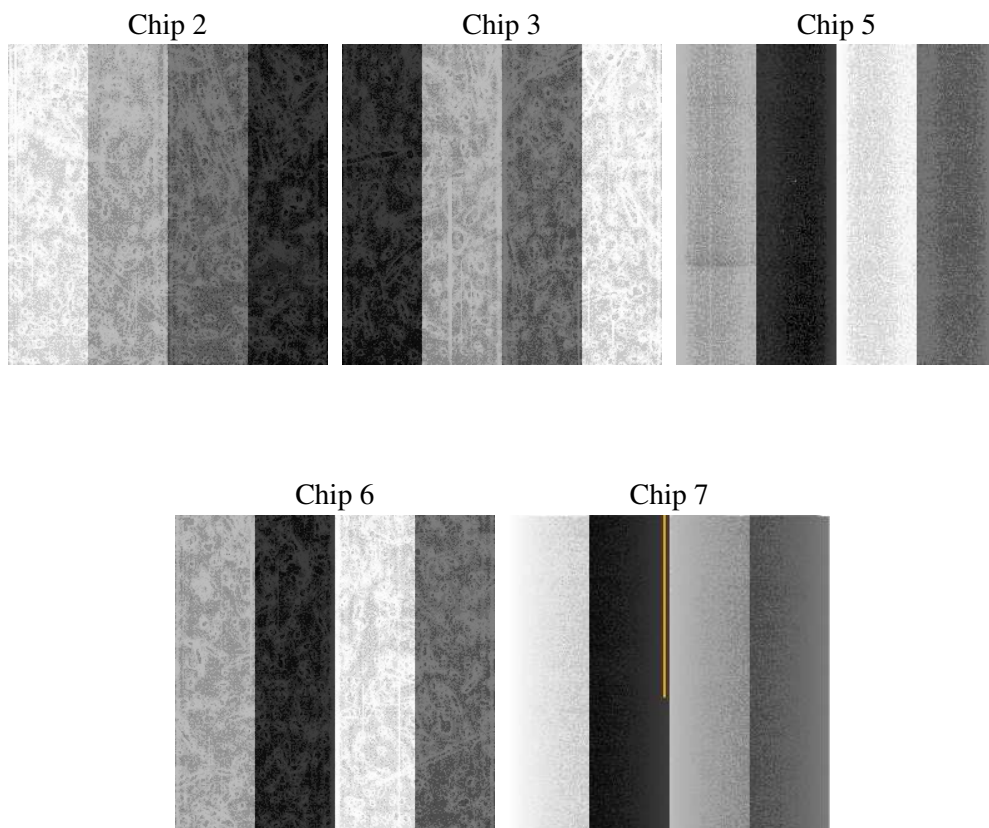
2 OBI

2.1 OBI

2.1.1 Images



2.1.2 Bias



2.1.3 Parameters

obi_num	0
ascdsver	7.6.7.1
caldbver	3.2.1
date	2006-04-14T14:44:33
revision	3

sched_exp_time	100000.000000
ontime	102041.74379972
ontime2	102029.17993873
ontime3	102026.03893855
ontime5	102041.74379972
ontime6	102007.19312704
ontime7	102041.74379972
llevents	4635501

2.1.4 Events

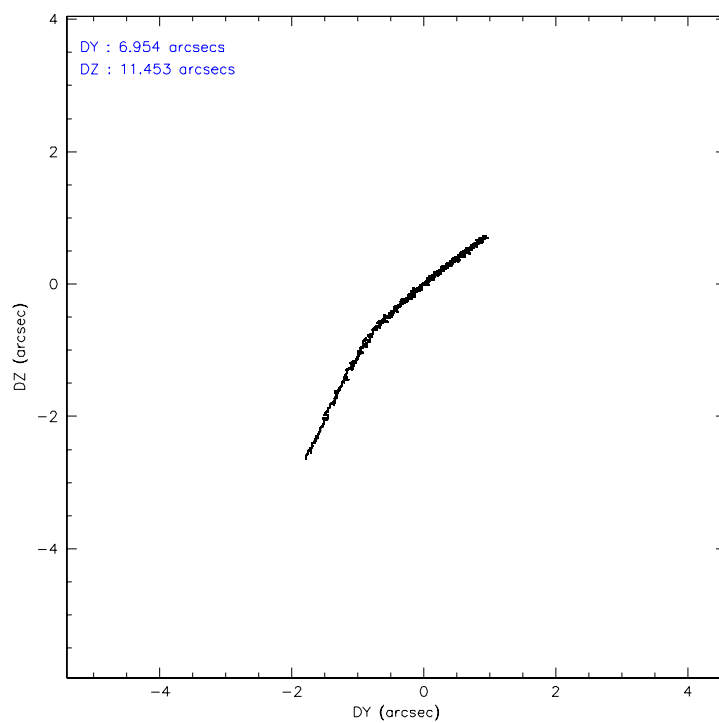
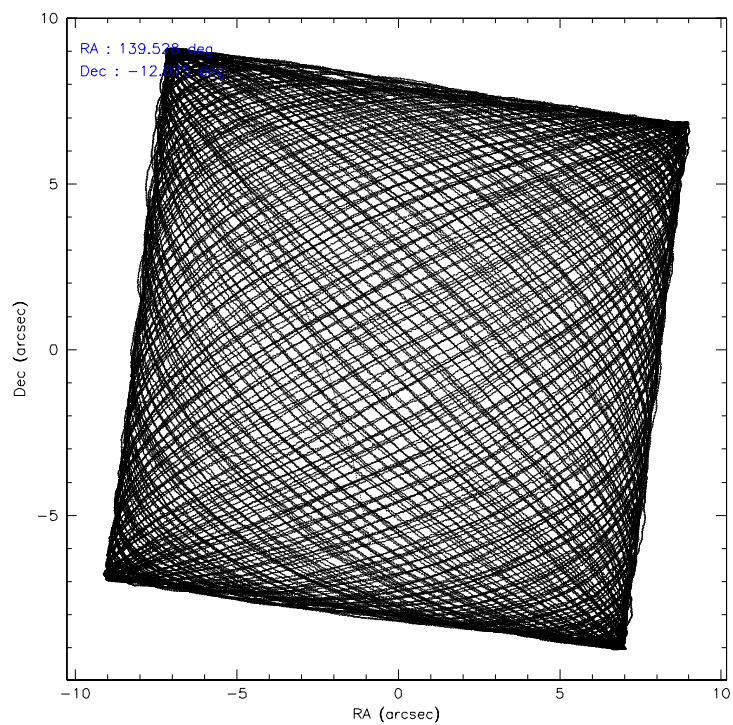
	ccd 2	ccd 3	ccd 5	ccd 6	ccd 7
level 1 events	716219	691038	904776	750470	1572998
rejected events	651091	626133	489596	644726	454922
rejected %	90%	90%	54%	85%	28%

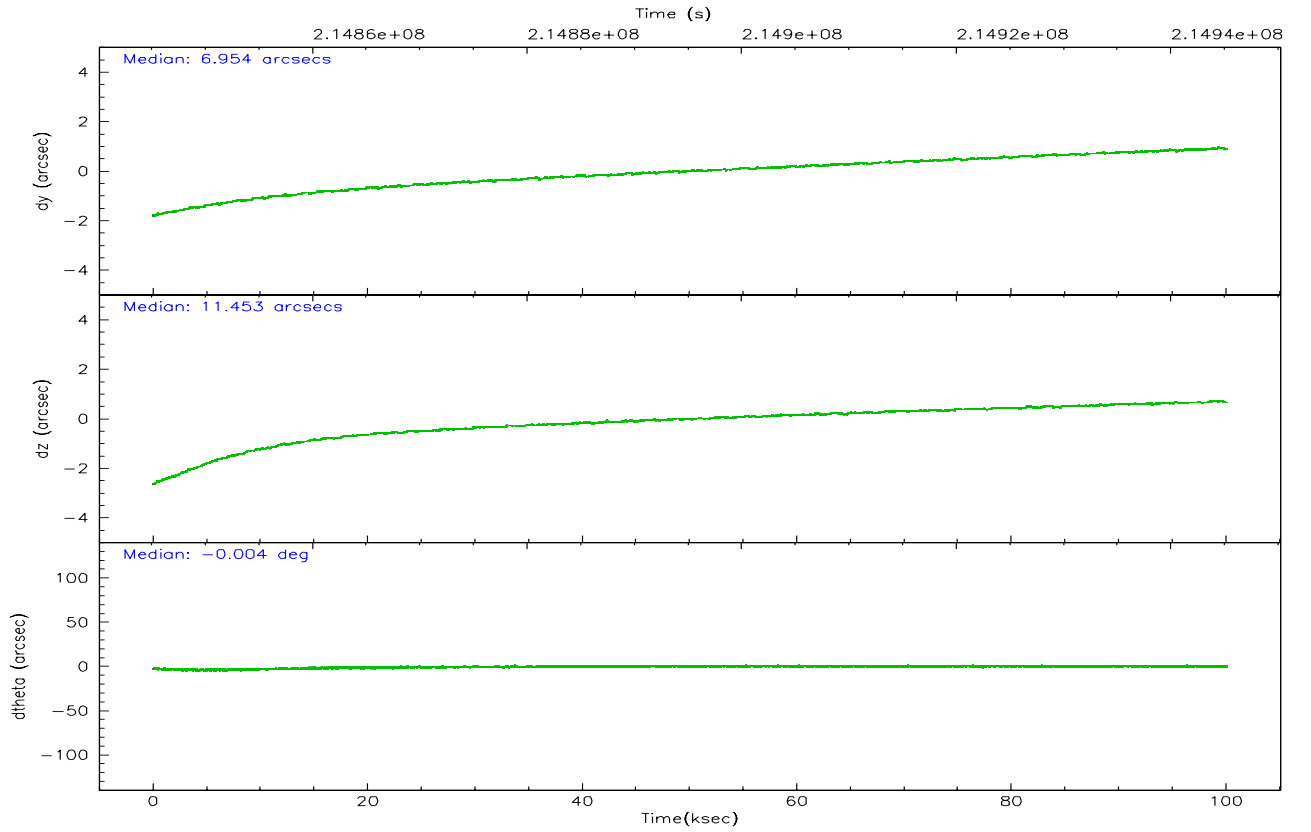
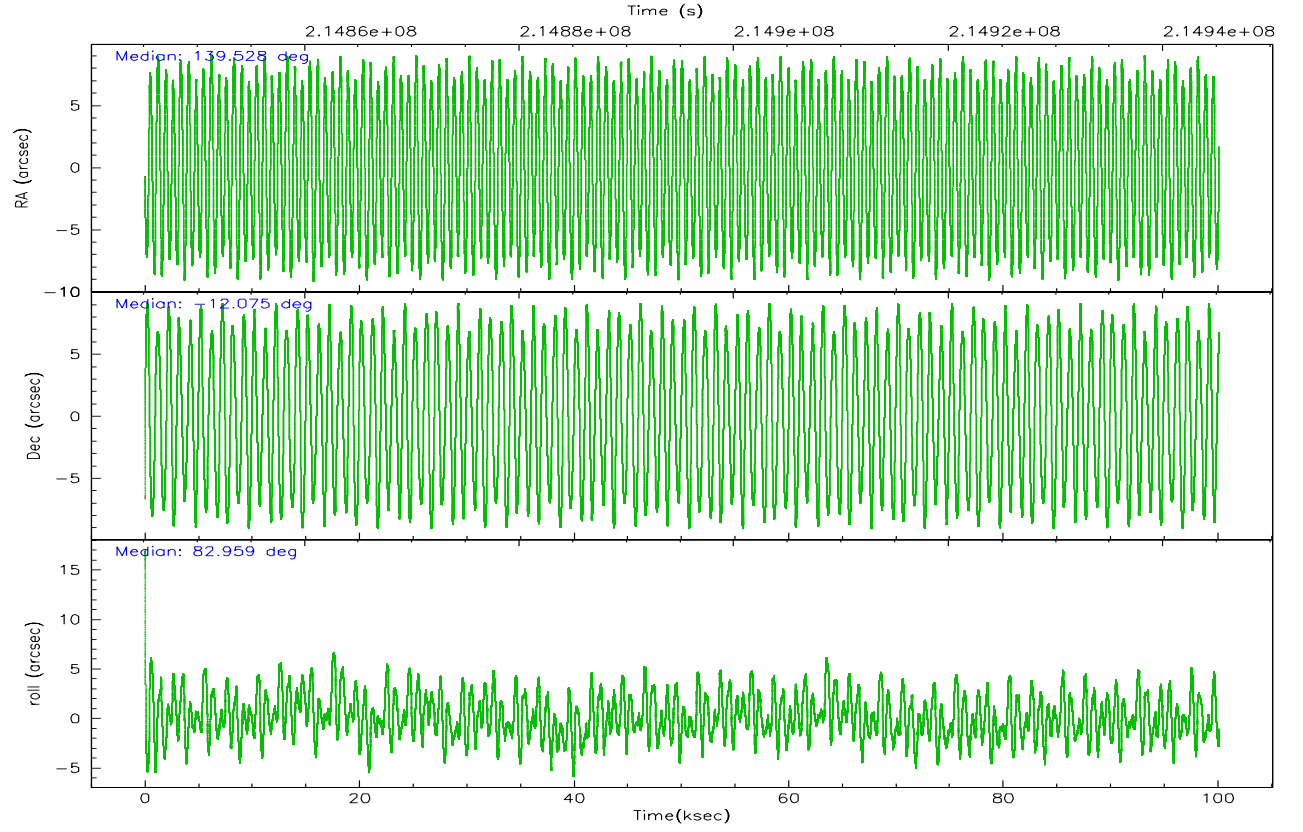
	ccd 2	ccd 3	ccd 5	ccd 6	ccd 7
grade 0 events	24532	24557	18622	54686	255792
	3%	3%	2%	7%	16%
grade 1 events	347	332	296	443	618
	0%	0%	0%	0%	0%
grade 2 events	15117	13793	133799	18785	304497
	2%	1%	14%	2%	19%
grade 3 events	7473	7818	11376	9090	110093
	1%	1%	1%	1%	6%
grade 4 events	7455	7461	10833	8727	107878
	1%	1%	1%	1%	6%
grade 5 events	21992	26668	50002	27673	63719
	3%	3%	5%	3%	4%
grade 6 events	11757	12513	248446	15866	347312
	1%	1%	27%	2%	22%
grade 7 events	627546	597896	431402	615200	383089
	87%	86%	47%	81%	24%

2.2 Compared Parameters

Parameter	Planned	Actual	Parameter	Planned	Actual
Instrument	ACIS	ACIS	Obspar format version number	6	6
Detector	ACIS-23567	ACIS-23567	Obspar file type	PREDICTED	ACTUAL
Grating	NONE	NONE	Obspar update status	NONE	UPDATED
Data mode	VFAINT	VFAINT	On-chip summing requested	N	N
Observation mode	POINTING	POINTING	Subarray requested	NONE	NONE
Pointing RA	139.539311	139.528084922974	Alternating exposures requested	N	N
Pointing Dec	-12.099744	-12.07483484335001	Primary exposure time	0.000000	3.1
Pointing Roll	82.811834	82.96610817137697			
Roll angle	90.000000	90.000000			
Roll tolerance	10.000000	10.000000			
Roll constraint allows 180D rotation	N	N			
SIM focus pos (mm)	-0.684267	-0.6828225247311905			
SIM defocus (mm)	0	0.001444936568705701			
SIM translation stage pos (mm)	-189.132523	-189.1368542445495			
SIM translation stage offset (mm)	-1	-0.9956683384583584			
Observation start time	214845272.184000	214843227.80127			
Observation start date	2004-10-22T15:13:28	2004-10-22T14:40:27			
Observation end time	214945272.184000	214946420.19339			
Observation end date	2004-10-23T19:00:08	2004-10-23T19:20:20			
Read mode	TIMED	TIMED			

2.3 Aspect



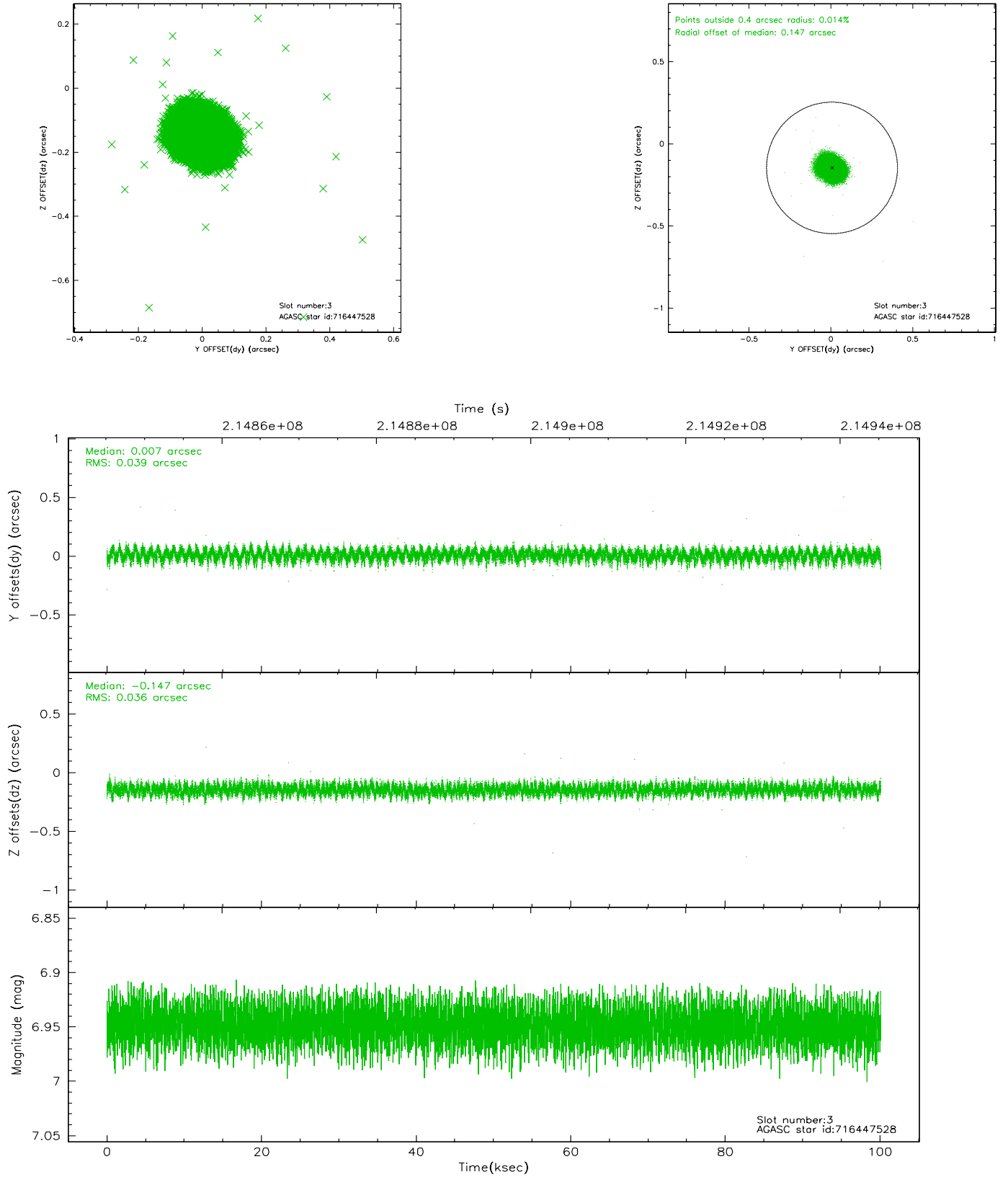


Slot Statistics

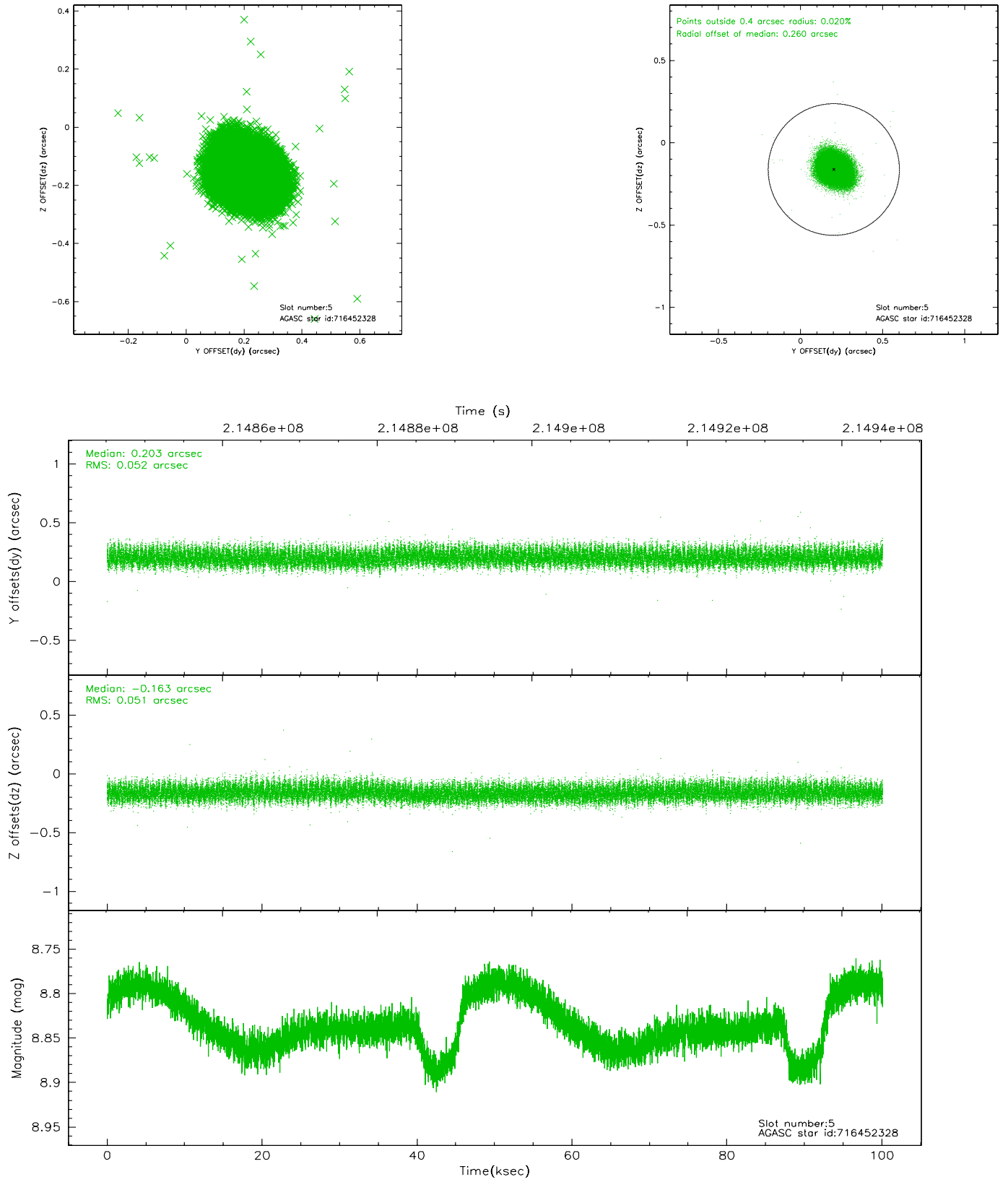
slot	status	id	mag	n_pts	med_dy	med_dz	dr1	dr2	ra	dec	mean_y	mean_z
0	FID	ACIS-S-1	7.18	24423	0.021	-0.027	0.029	0.055	0.000000	0.000000	936.47	-1748.90
1	FID	ACIS-S-4	7.20	24422	0.014	0.013	0.027	0.052	0.000000	0.000000	2153.86	155.37
2	FID	ACIS-S-5	7.23	24422	-0.062	0.028	0.018	0.033	0.000000	0.000000	-1812.57	148.93
3	GUIDE	716447528	6.95	48845	0.007	-0.147	0.057	0.088	139.371683	-11.961966	418.20	647.75
4	OMITTED		0.00	0	0.000	0.000	0.000	0.000	0.000000	0.000000	0.00	0.00
5	GUIDE	716452328	8.84	48831	0.203	-0.163	0.078	0.123	138.982178	-12.235590	-732.45	1883.40
6	GUIDE	716575816	8.59	48834	-0.062	0.145	0.082	0.140	140.229272	-11.600909	2083.27	-2189.67
7	GUIDE	716578888	9.26	48585	-0.143	0.165	0.087	0.142	139.858876	-11.605741	1905.28	-895.34

2.4 Star Slots

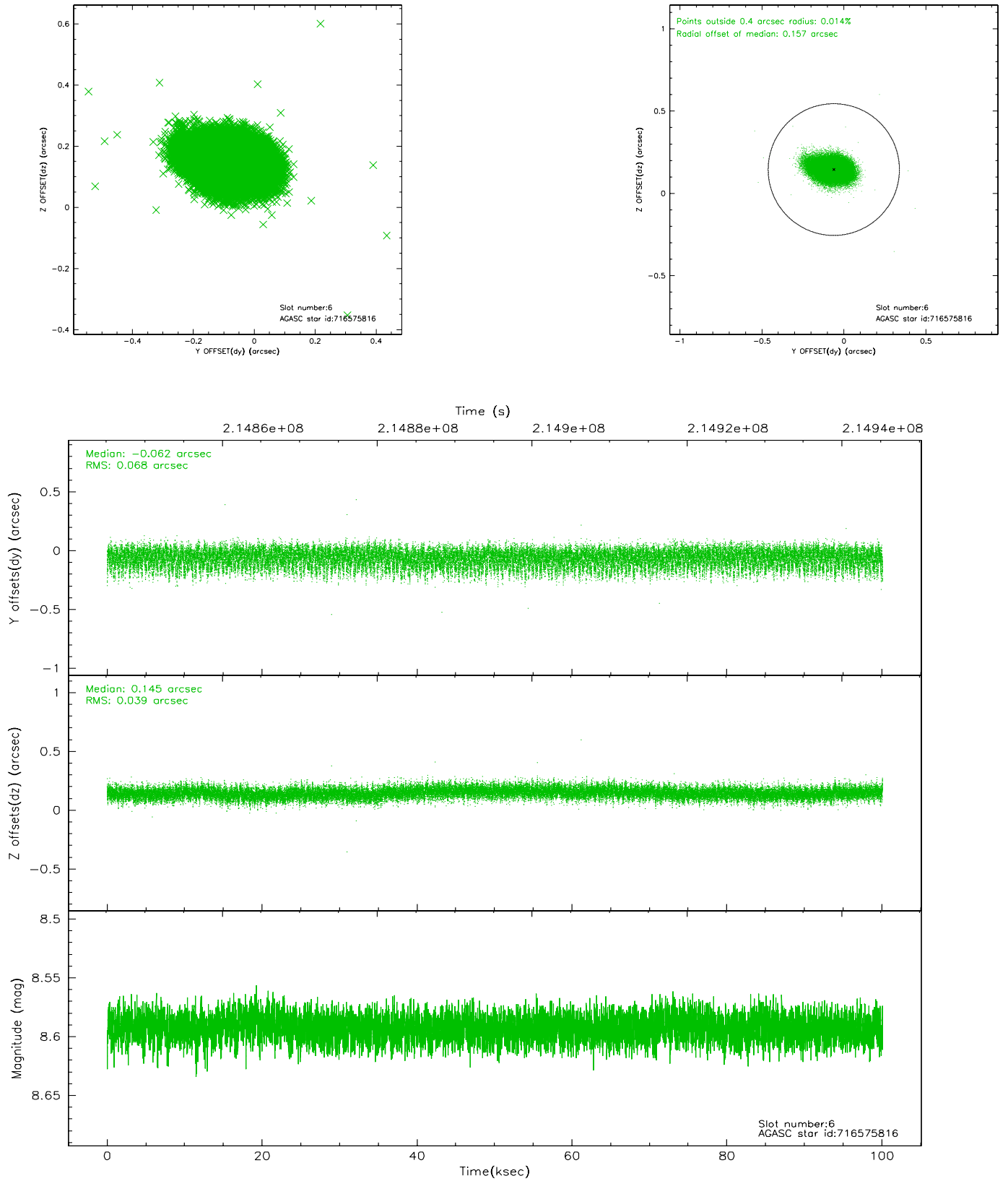
2.4.1 Slot 3



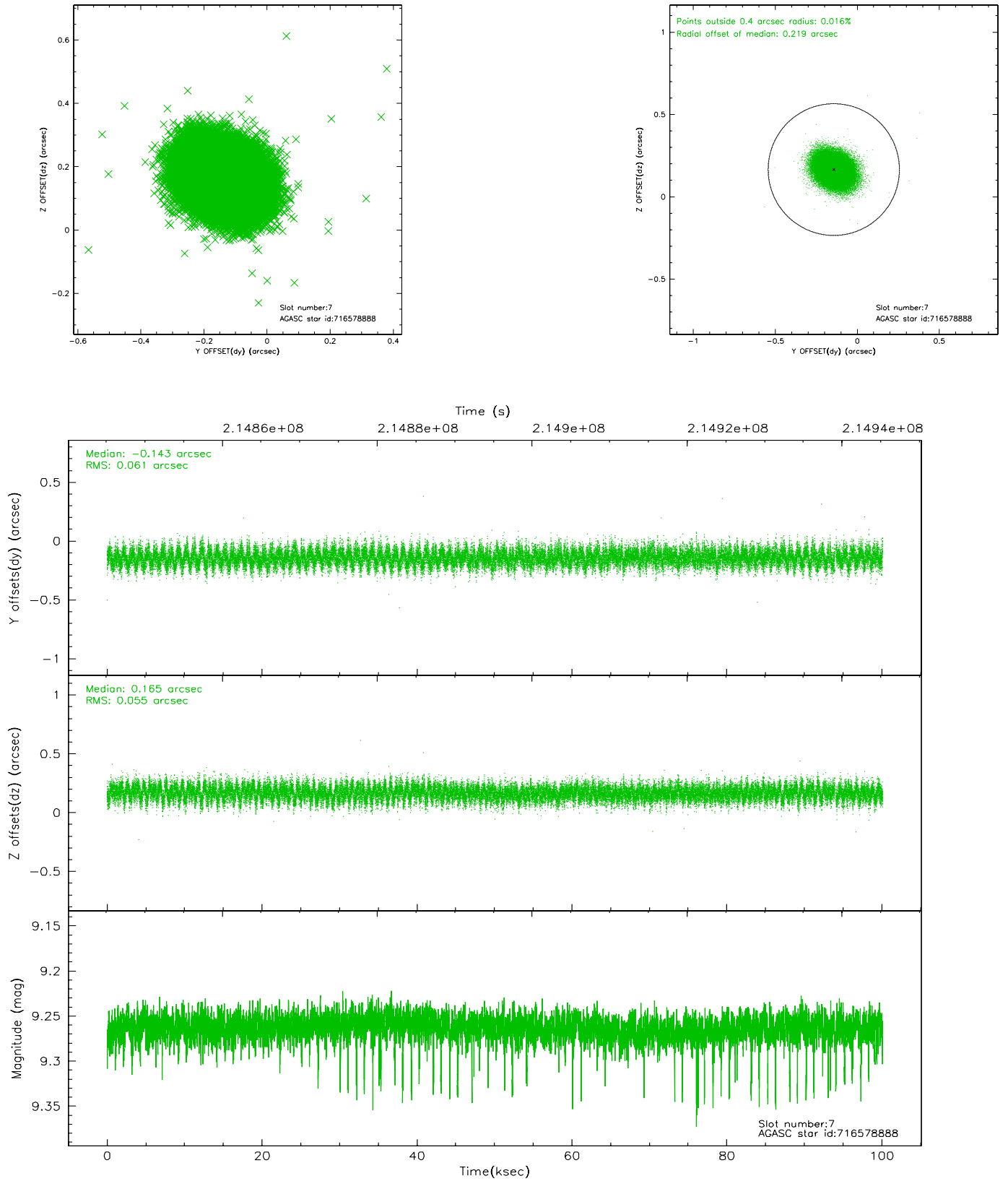
2.4.2 Slot 5



2.4.3 Slot 6

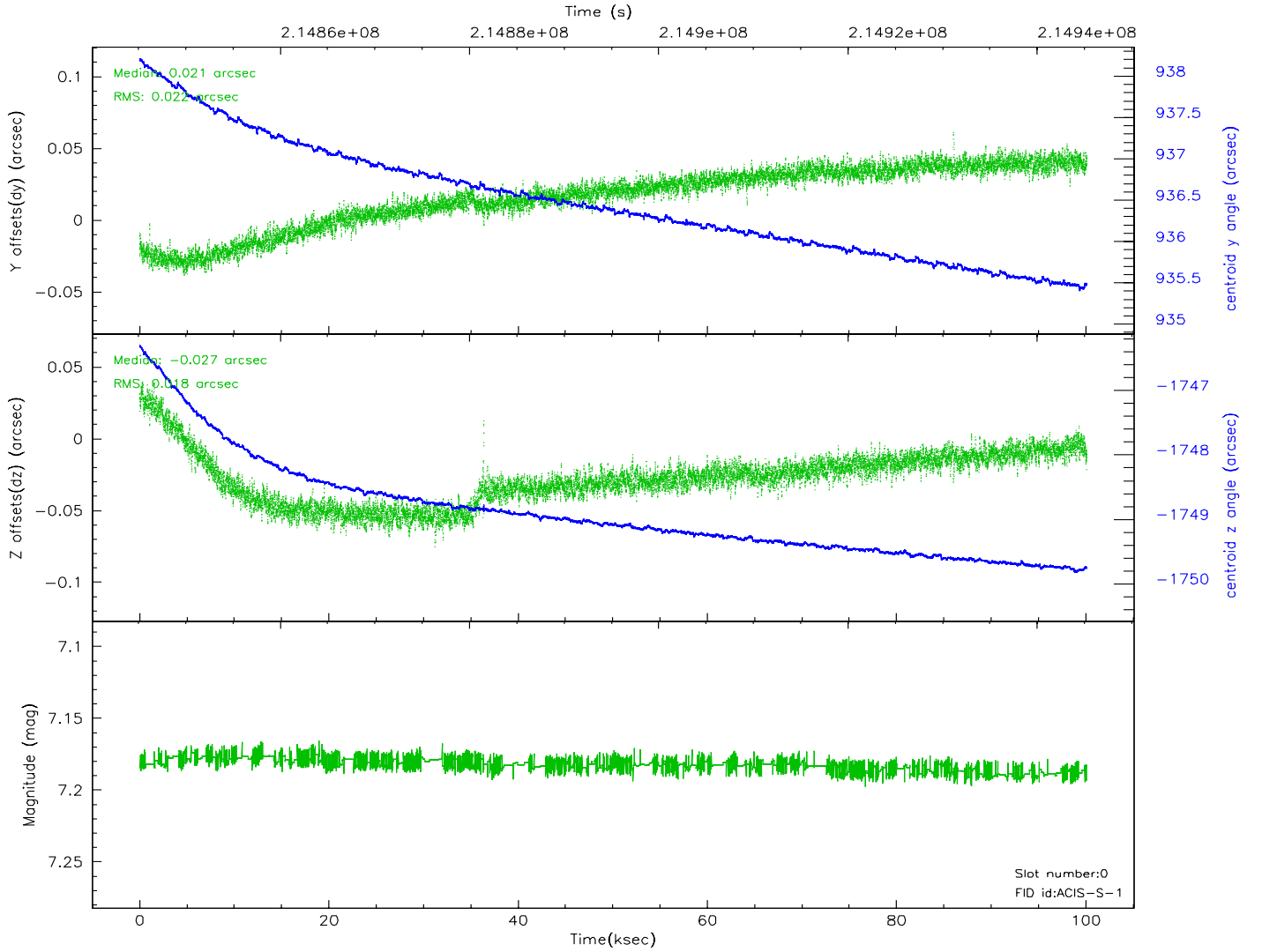
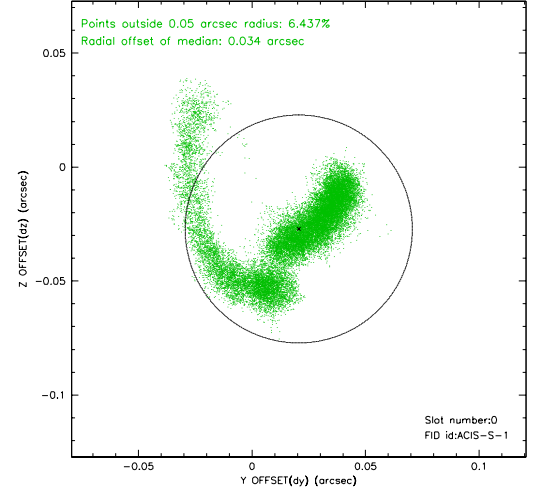
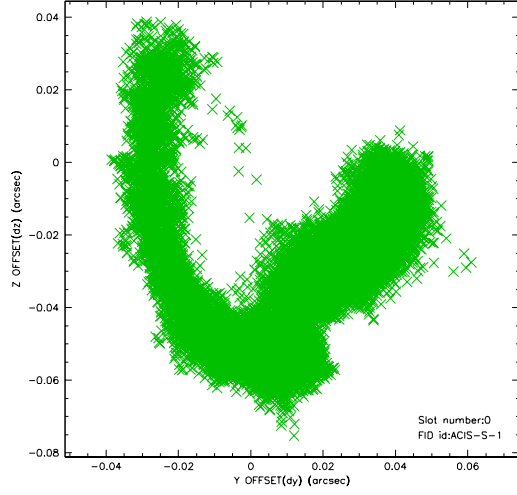


2.4.4 Slot 7

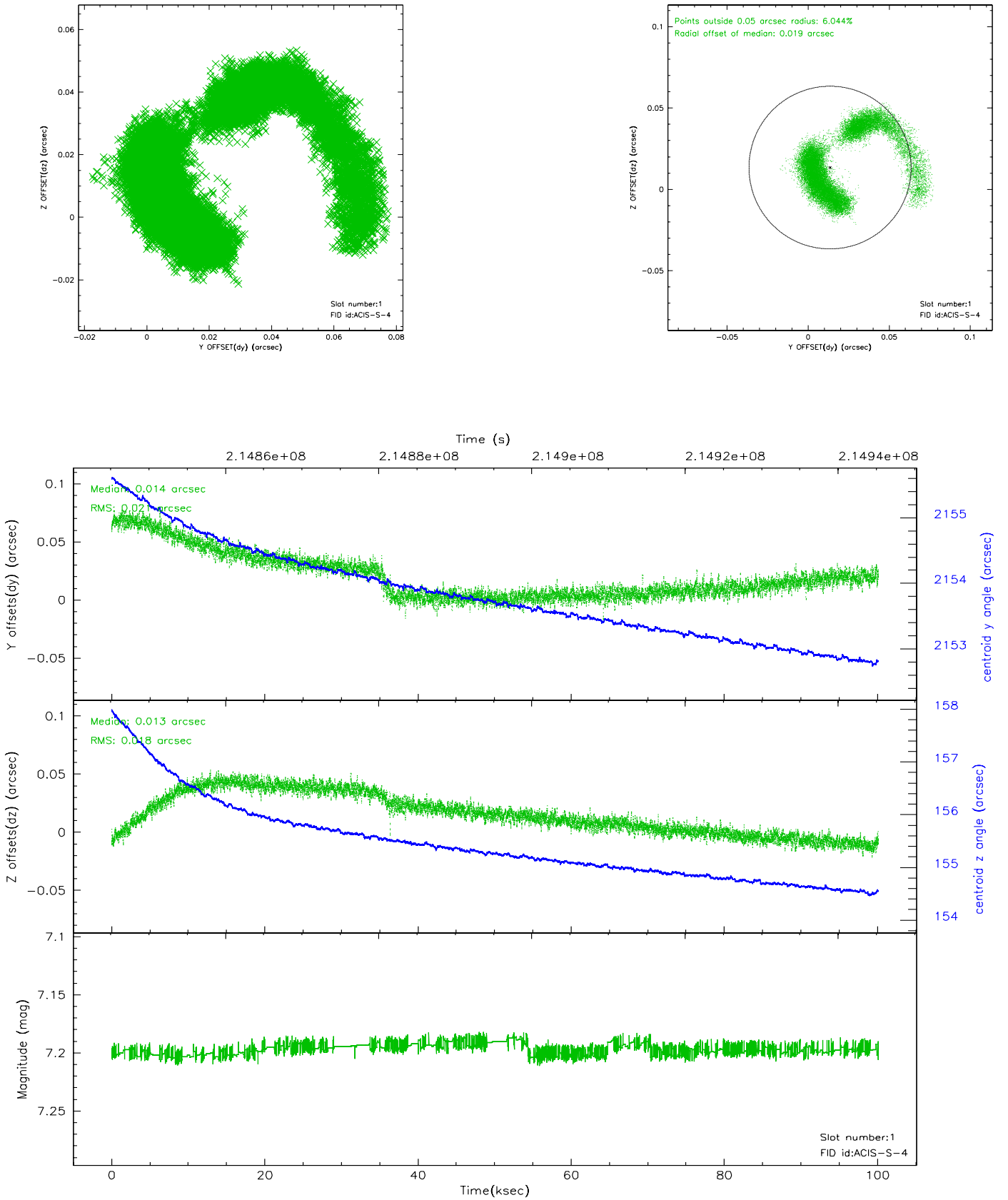


2.5 FID Slots

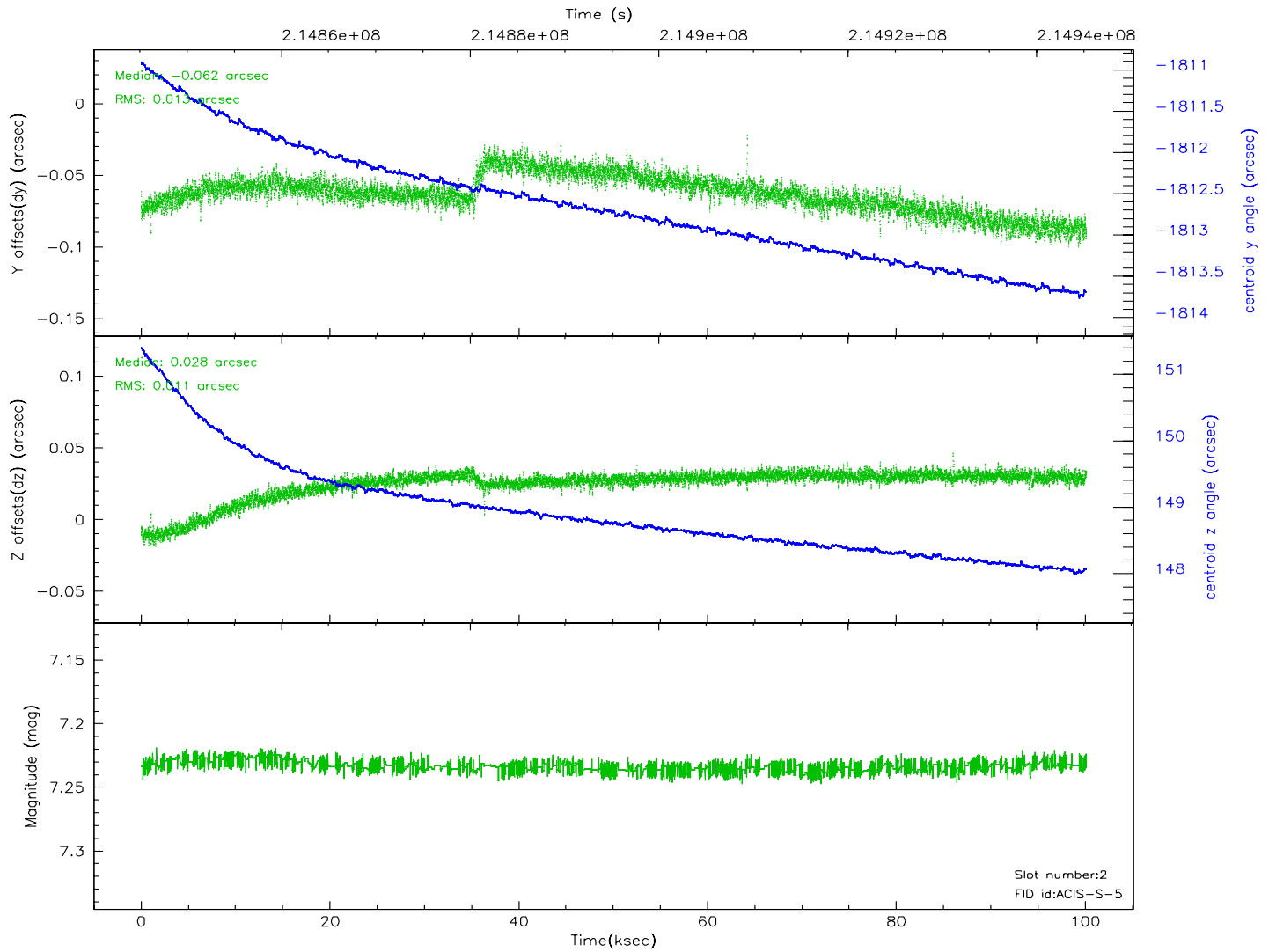
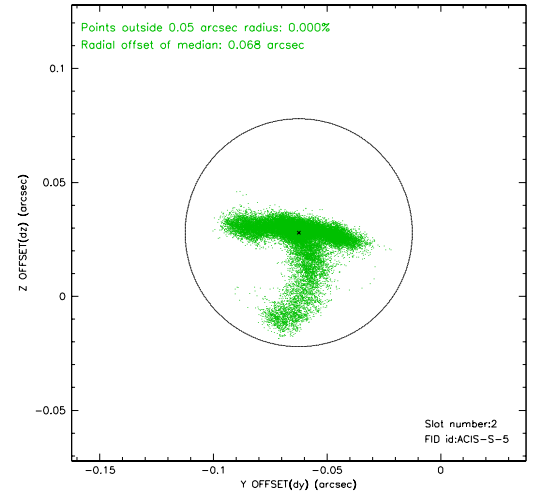
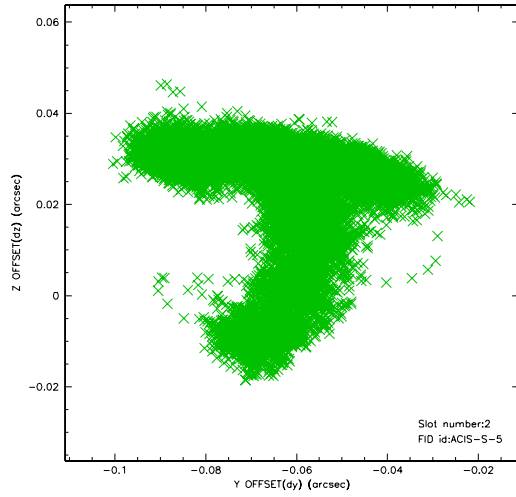
2.5.1 Slot 0



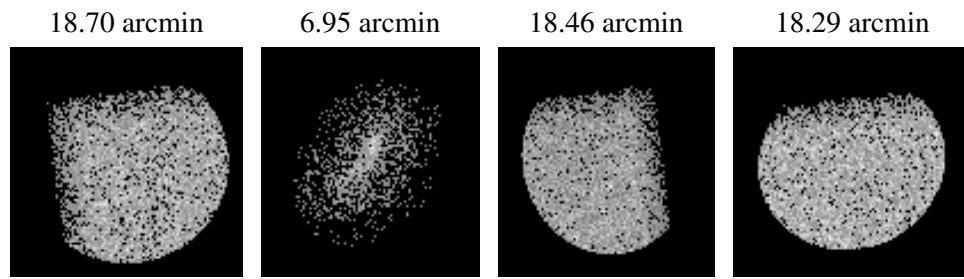
2.5.2 Slot 1



2.5.3 Slot 2



3 Point Sources



A Summary

A.1 Status

V&V Scientist	Beth Sundheim
V&V Date (YYYY-MM-DD)	2010.10.04
V&V Edition	2
V&V Disposition and Status	OK
V&V Charge Time	100.126

A.2 Comments

The guide star in slot 4 was manually excluded from the processing due to poor data quality.
Roll constraint satisfied.