

V&V Reference Report

L2 ASCDS Version : 7.6.7.2

Observation 4890 - L2 Version 001
Chandra X-Ray Center

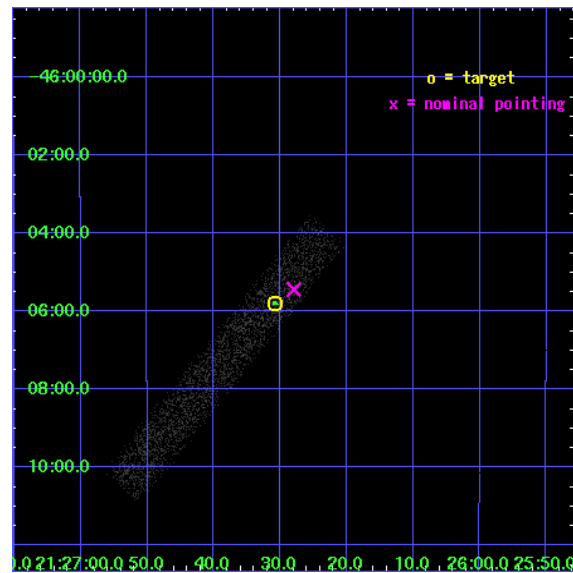
L2 Processing Date : May 27 2006

Contents

1	Front	2
2	OBI	3
2.1	OBI	3
2.1.1	Images	3
2.1.2	Bias	3
2.1.3	Parameters	4
2.1.4	Events	4
2.2	Compared Parameters	5
2.3	Aspect	6
2.4	Star Slots	9
2.4.1	Slot 3	9
2.4.2	Slot 4	10
2.4.3	Slot 5	11
2.4.4	Slot 6	12
2.4.5	Slot 7	13
2.5	FID Slots	14
2.5.1	Slot 0	14
2.5.2	Slot 1	15
2.5.3	Slot 2	16
3	Point Sources	17
A	Summary	18
A.1	Status	18
A.2	Comments	18

1 Front

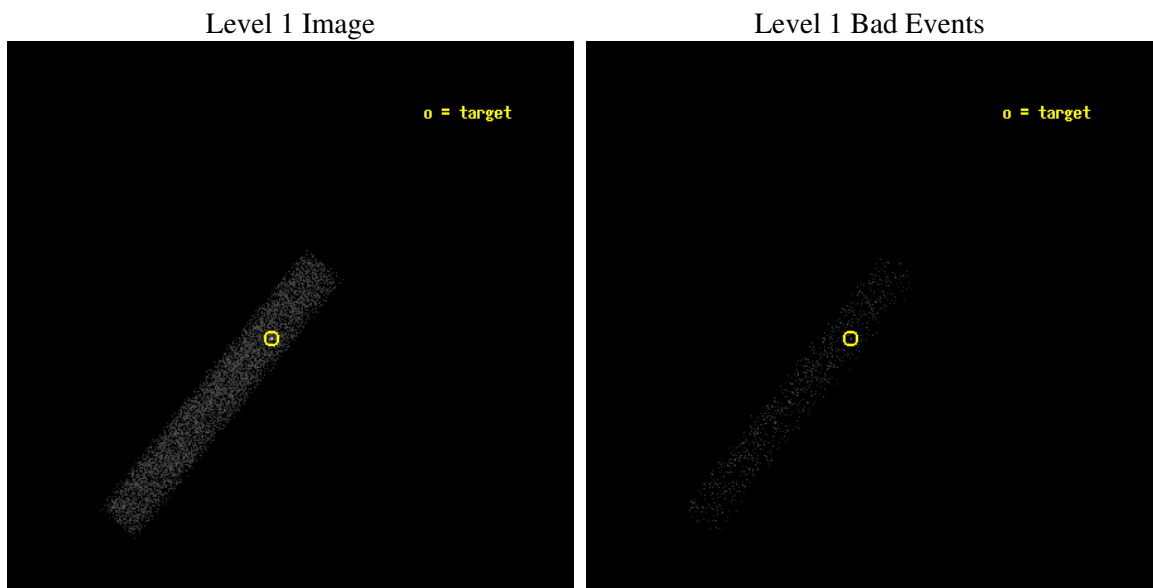
seq_num	700972
obs_id	4890
title	Continuing a Flux-limited Survey for X-ray Emission from Radio Jets
observer	Dr. Herman Marshall
object	2123-463
dtcycle	0
cycle	P
ra_targ	321.627917
dec_targ	-46.096528
ra_nom	321.61655170774
dec_nom	-46.090715950226
roll_nom	128.889636629
revision	2
ontime	7137.2001063526
livetime	6473.0637641507
ontime7	7137.2001063526
l2events	4361



2 OBI

2.1 OBI

2.1.1 Images



2.1.2 Bias

Chip 7



2.1.3 Parameters

obi_num	0
ascdsver	7.6.7.2
caldbver	3.2.2
date	2006-05-27T02:55:42
revision	2

sched_exp_time	7000.000000
ontime	8145.0325377882
ontime7	8145.0325377882
l1events	10618

2.1.4 Events

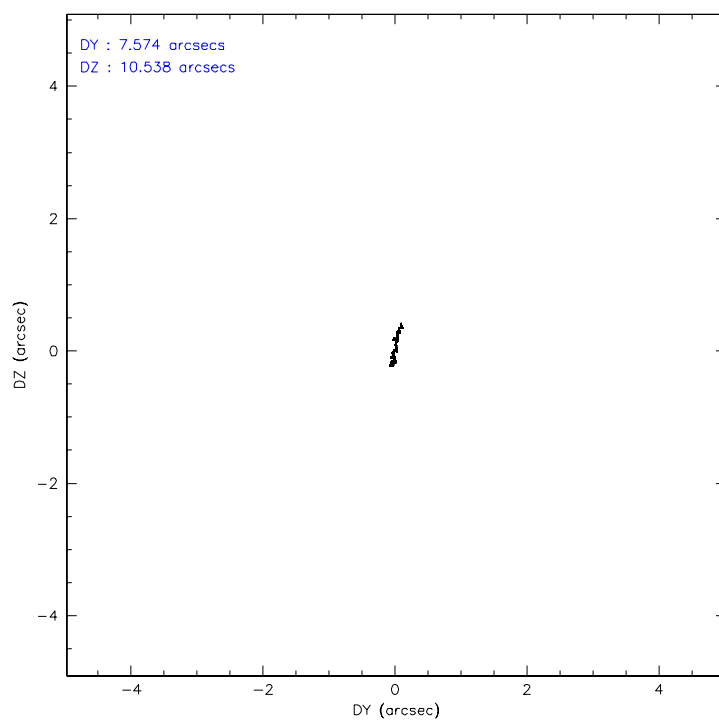
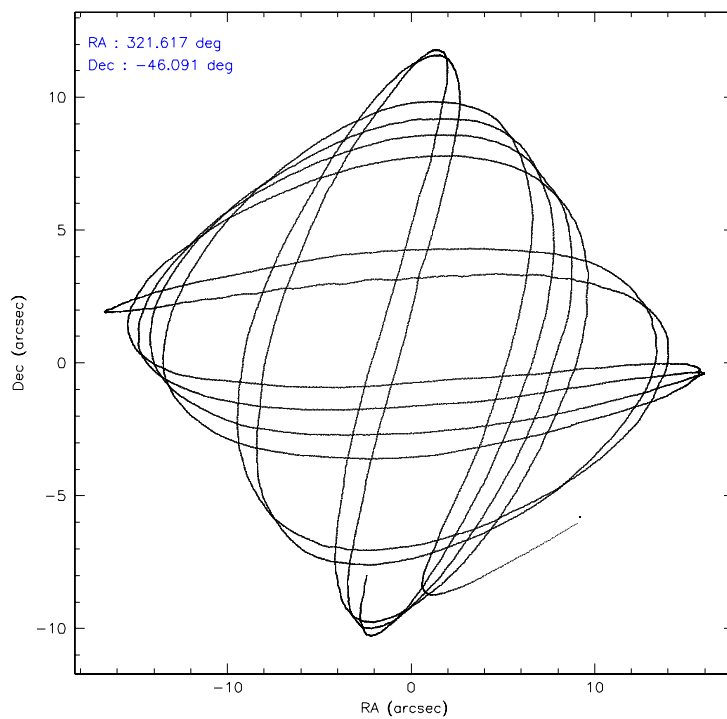
	ccd 7
level 1 events	10618
rejected events	6118
rejected %	57%

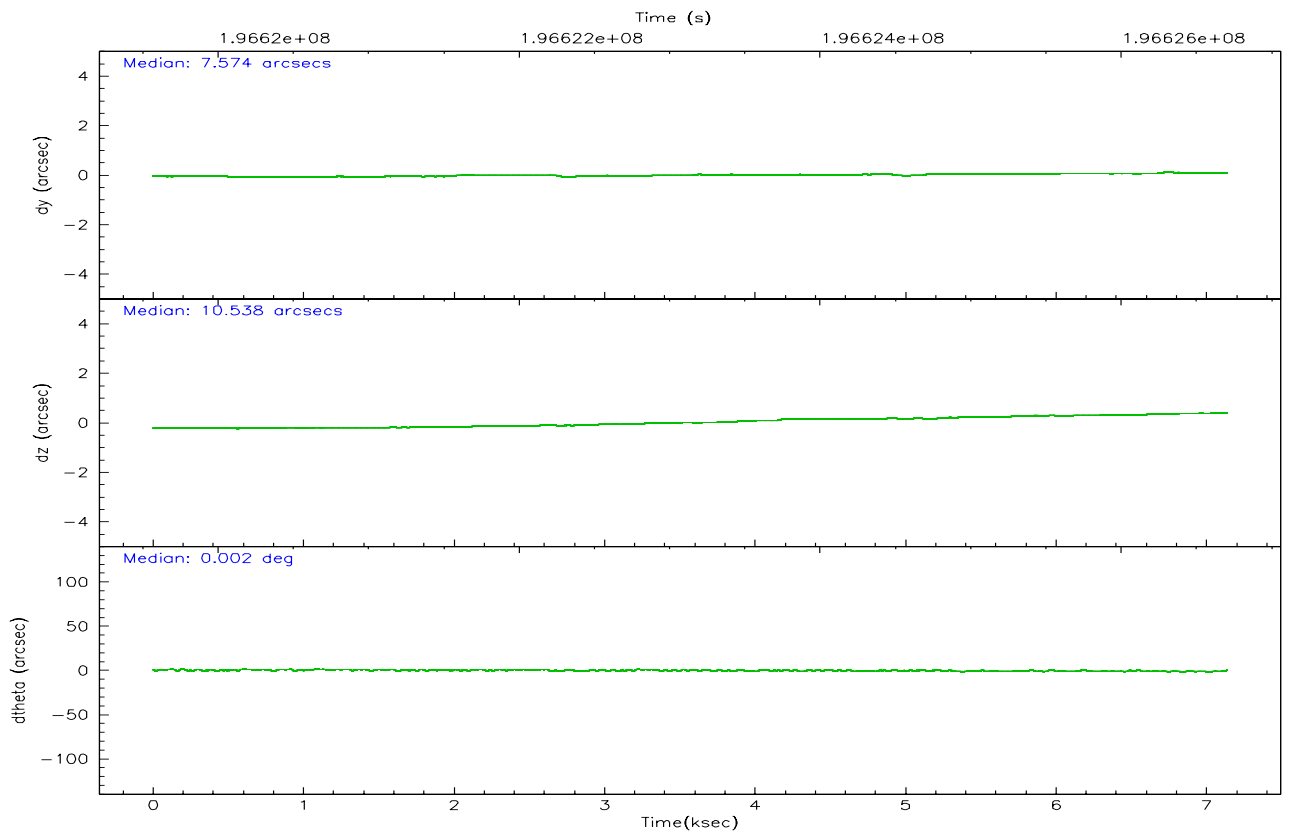
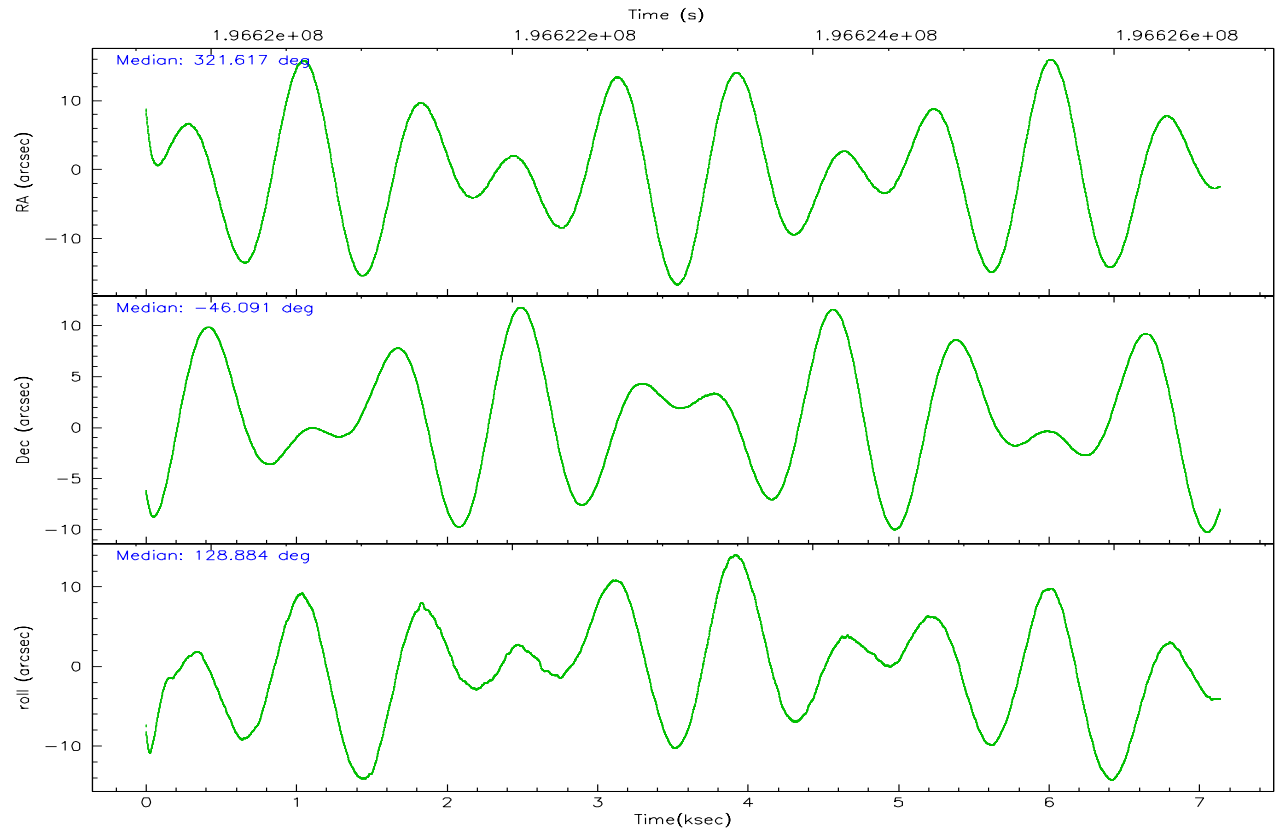
	ccd 7
grade 0 events	549
	5%
grade 1 events	5
	0%
grade 2 events	1005
	9%
grade 3 events	606
	5%
grade 4 events	542
	5%
grade 5 events	828
	7%
grade 6 events	2305
	21%
grade 7 events	4778
	44%

2.2 Compared Parameters

Parameter	Planned	Actual	Parameter	Planned	Actual
Instrument	ACIS	ACIS	Obspar format version number	6	6
Detector	ACIS-7	ACIS-7	Obspar file type	PREDICTED	ACTUAL
Grating	NONE	NONE	Obspar update status	NONE	UPDATED
Data mode	FAINT	FAINT	On-chip summing requested	N	N
Observation mode	POINTING	POINTING	Subarray requested	CUSTOM	1/8
Pointing RA	321.653340	321.6165517077426	Subarray start row	1	1
Pointing Dec	-46.100114	-46.09071595022591	Subarray row count	128	128
Pointing Roll	128.759538	128.8896366290005	Alternating exposures requested	N	N
SIM focus pos (mm)	-0.684267	-0.6828225247311905	Primary exposure time	0.000000	0.4
SIM defocus (mm)	0	0.001444936568705701			
SIM translation stage pos (mm)	-178.632523	-178.6370735452349			
SIM translation stage offset (mm)	-11.5	-11.49544903777291			
Observation start time	196619706.184000	196618561.45538			
Observation start date	2004-03-25T16:34:02	2004-03-25T16:16:01			
Observation end time	196626706.184000	196627412.33077			
Observation end date	2004-03-25T18:30:42	2004-03-25T18:43:32			
Read mode	TIMED	TIMED			

2.3 Aspect



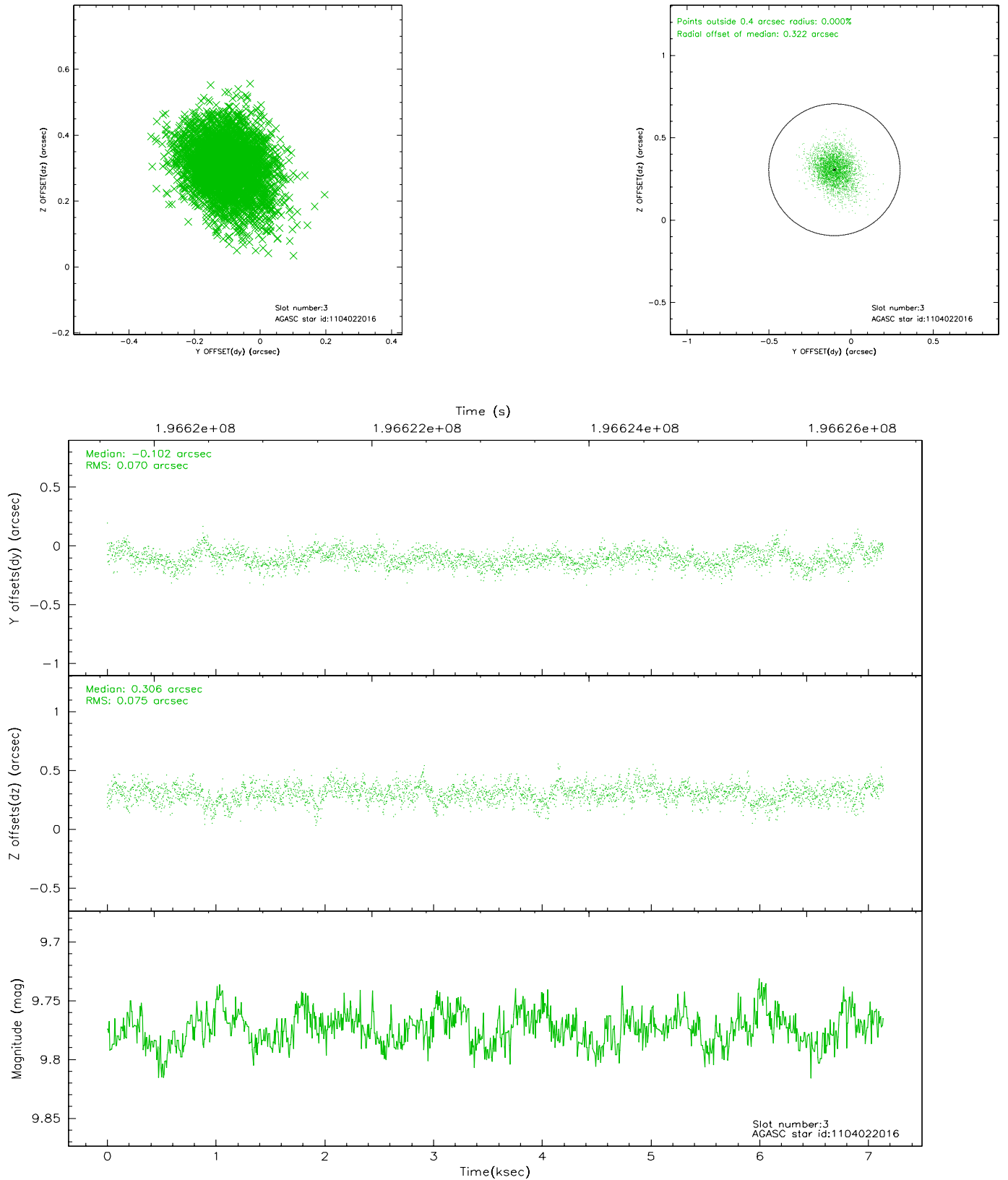


Slot Statistics

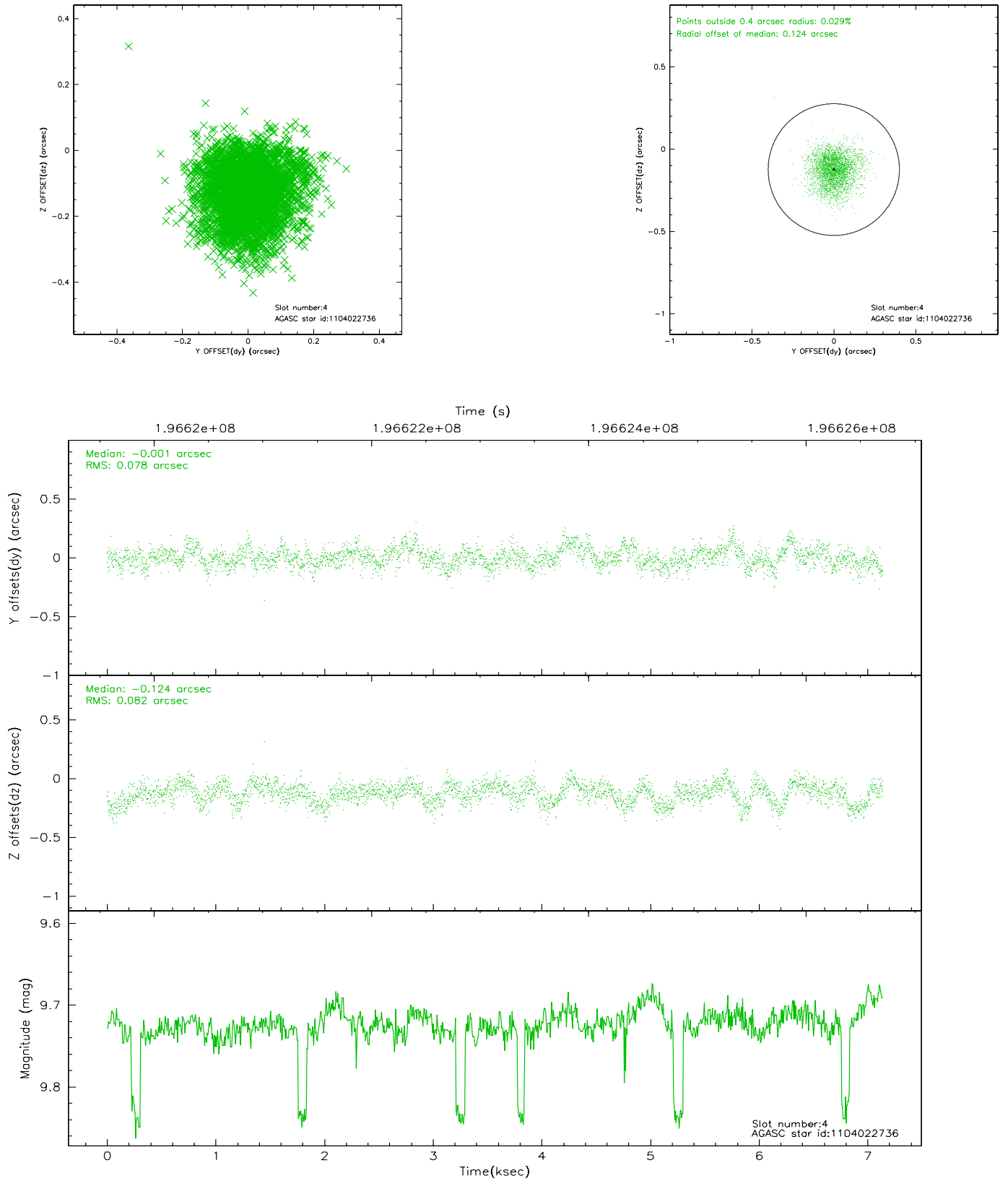
slot	status	id	mag	n_pts	med_dy	med_dz	dr1	dr2	ra	dec	mean_y	mean_z
0	FID	ACIS-S-2	7.09	1741	0.093	-0.291	0.015	0.028	0.000000	0.000000	-759.60	-1968.68
1	FID	ACIS-S-5	7.24	1742	-0.036	0.266	0.009	0.016	0.000000	0.000000	-1813.02	-67.04
2	FID	ACIS-S-6	7.42	1741	-0.084	0.030	0.009	0.015	0.000000	0.000000	401.22	577.33
3	GUIDE	1104022016	9.77	3481	-0.102	0.306	0.107	0.181	321.918335	-45.528777	1185.25	-1807.12
4	GUIDE	1104022736	9.72	3460	-0.001	-0.124	0.121	0.196	321.054358	-45.967505	1306.52	872.92
5	GUIDE	1104025192	8.96	3481	0.137	0.208	0.081	0.133	322.290908	-46.363651	-1735.52	-636.80
6	GUIDE	1104027304	6.69	3483	-0.042	-0.338	0.081	0.132	321.086840	-46.614708	-572.08	2254.71
7	GUIDE	1104022232	8.45	3481	0.007	-0.050	0.081	0.123	321.421143	-46.170139	165.35	610.72

2.4 Star Slots

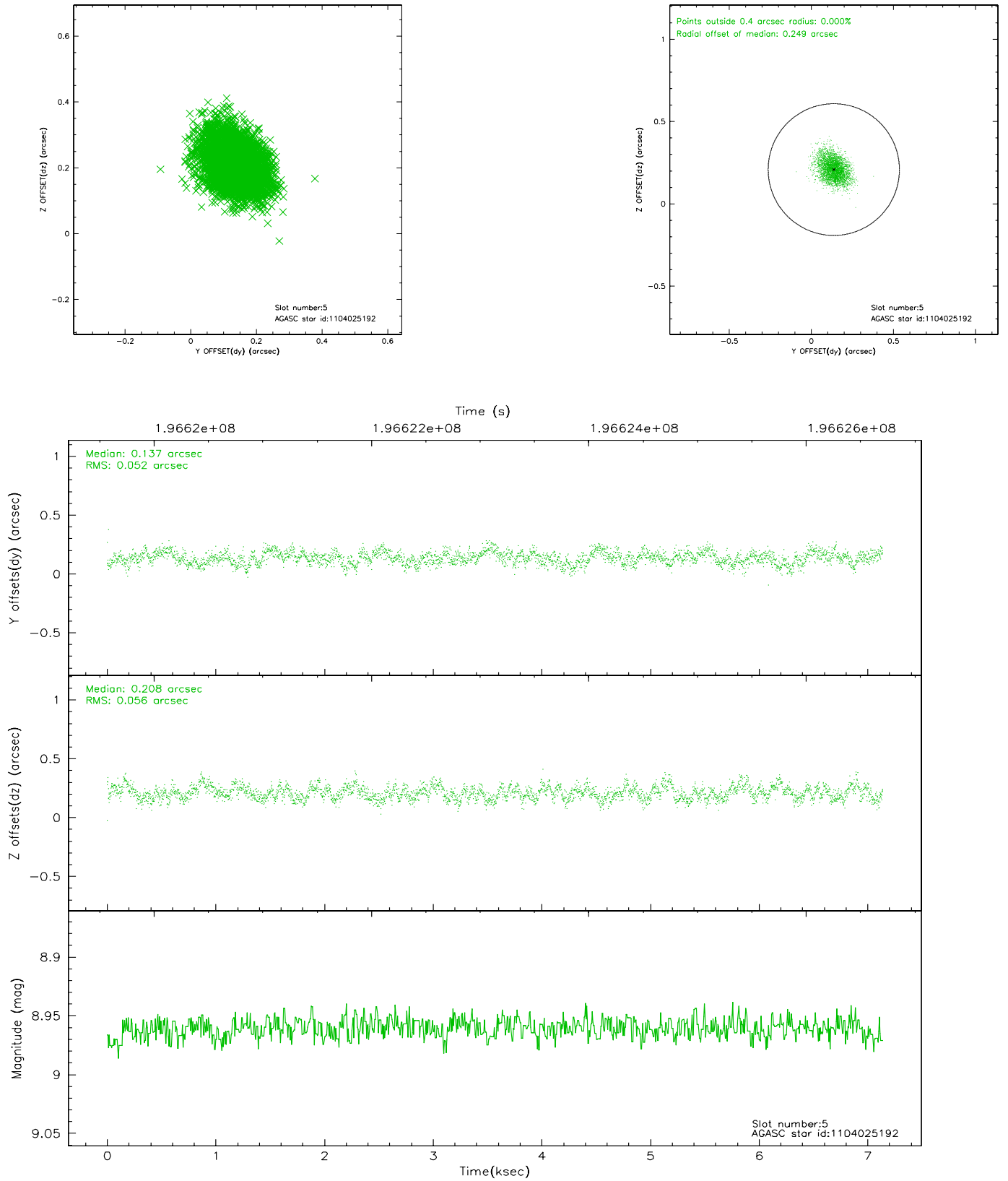
2.4.1 Slot 3



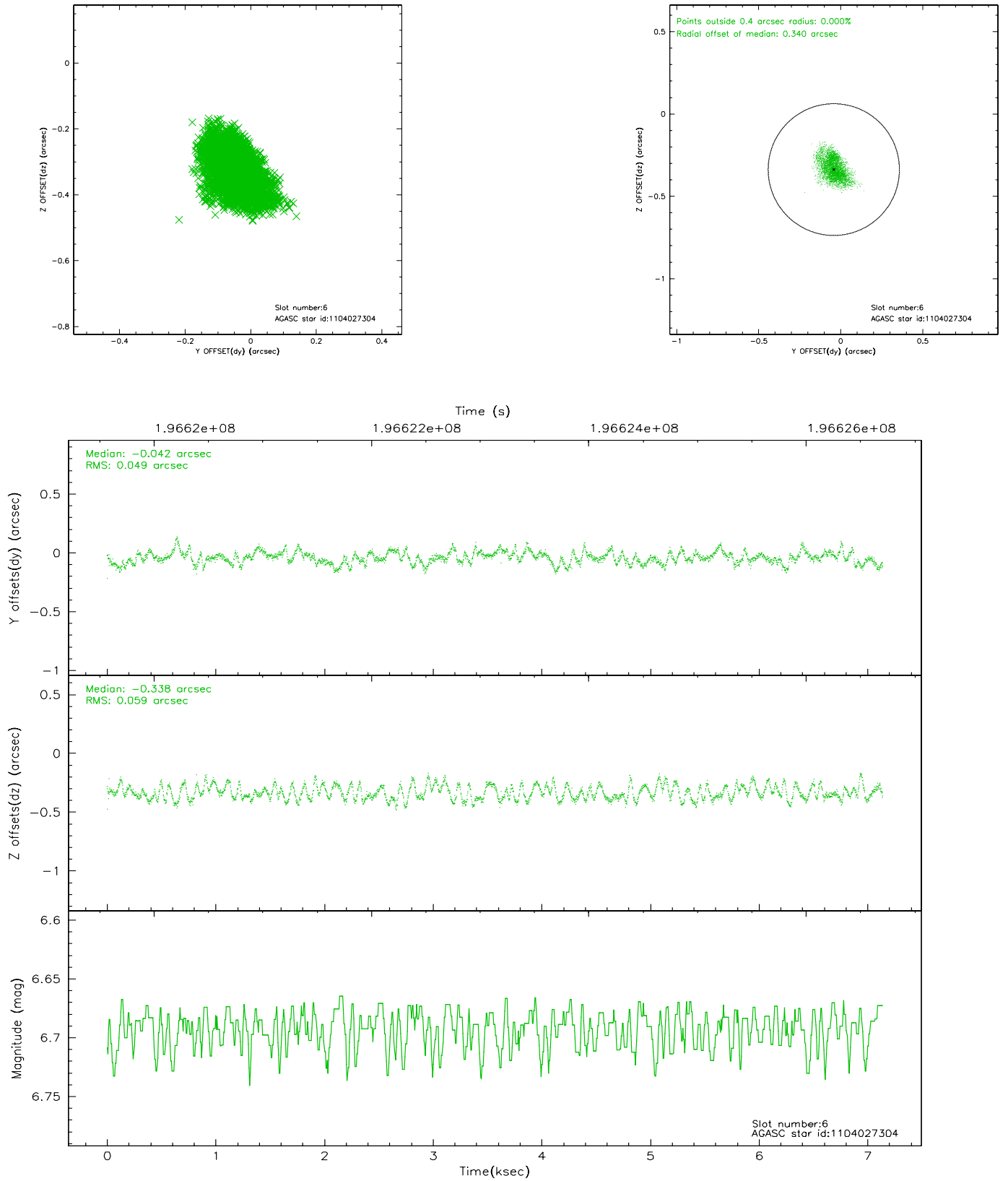
2.4.2 Slot 4



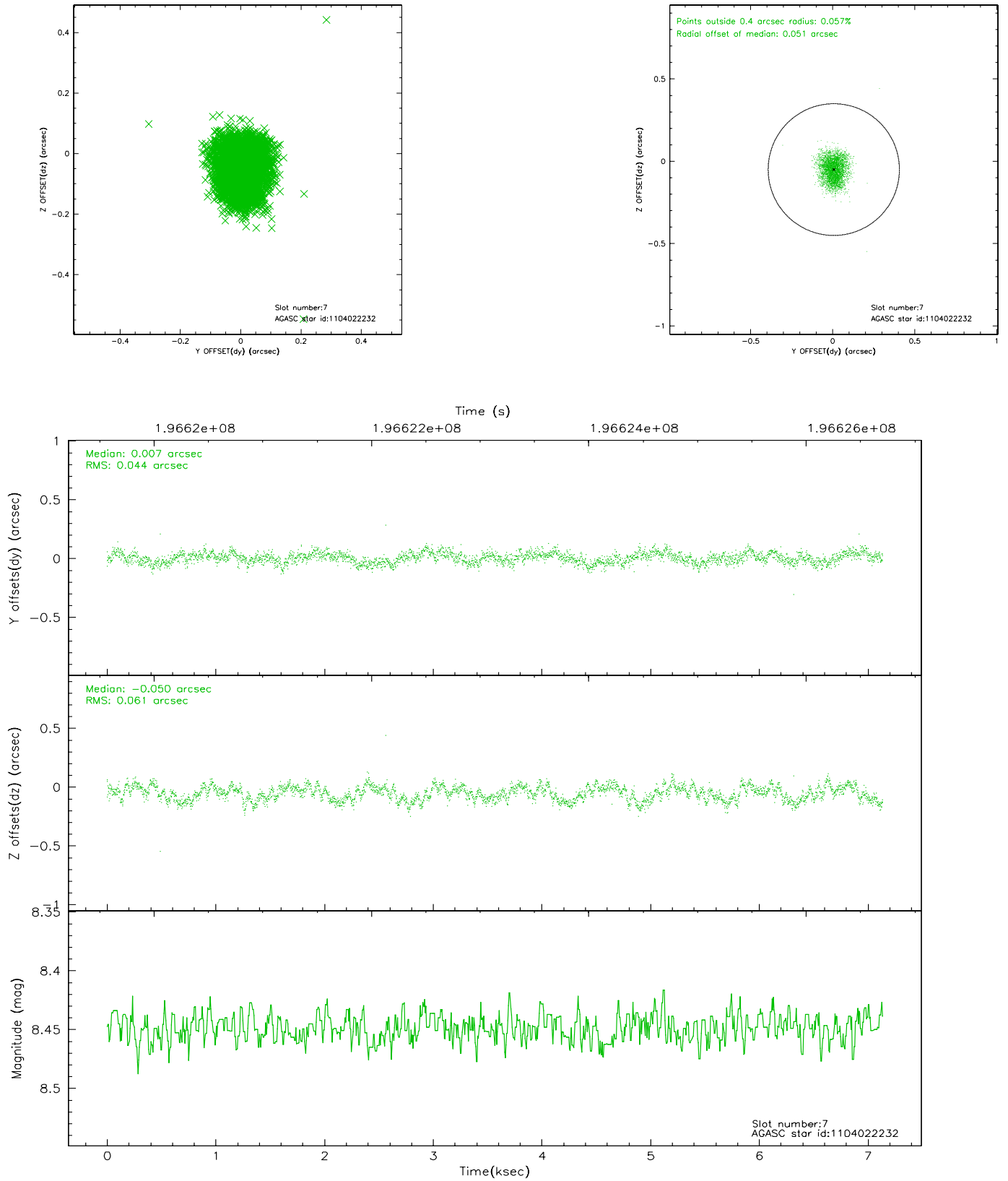
2.4.3 Slot 5



2.4.4 Slot 6

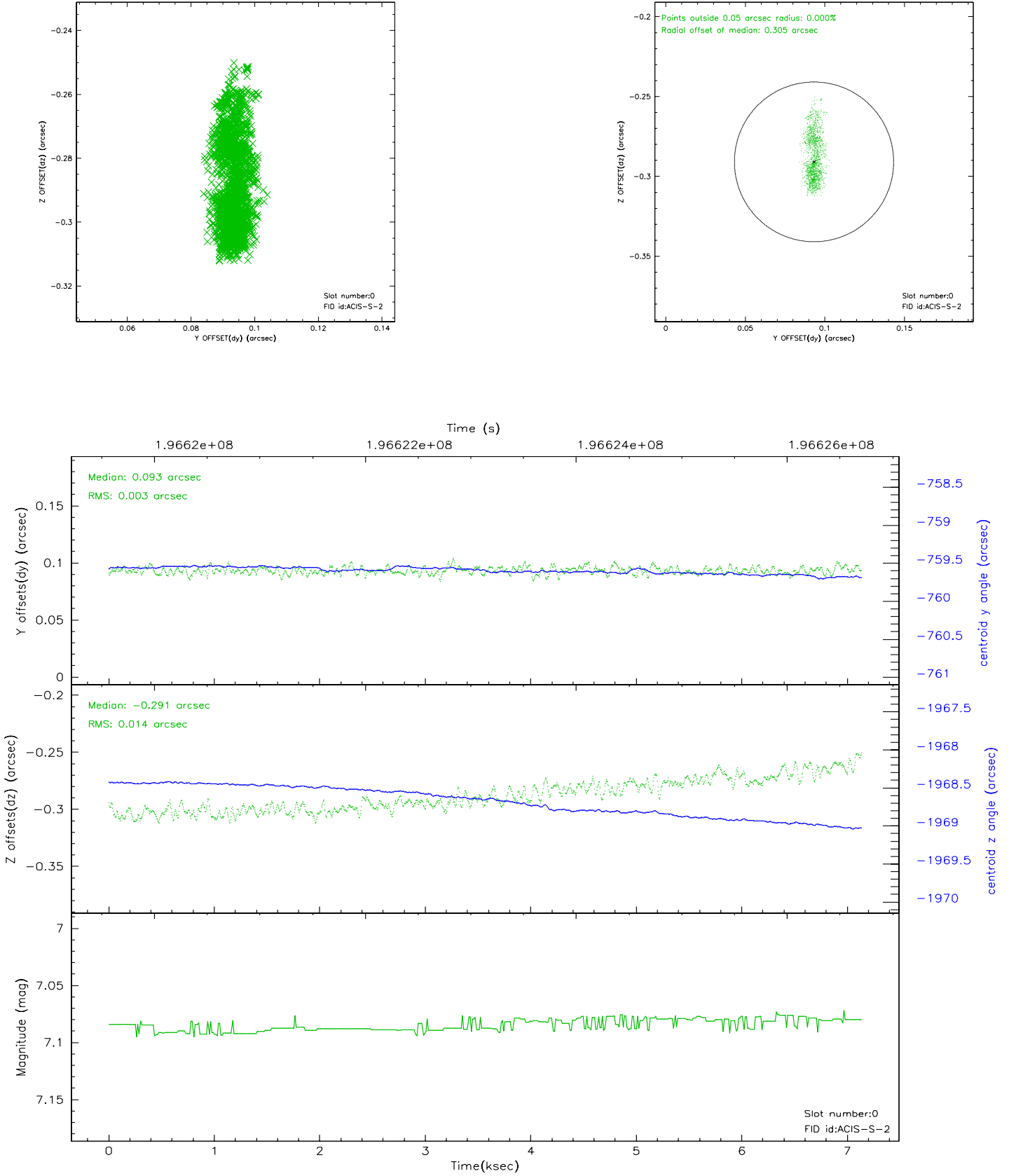


2.4.5 Slot 7

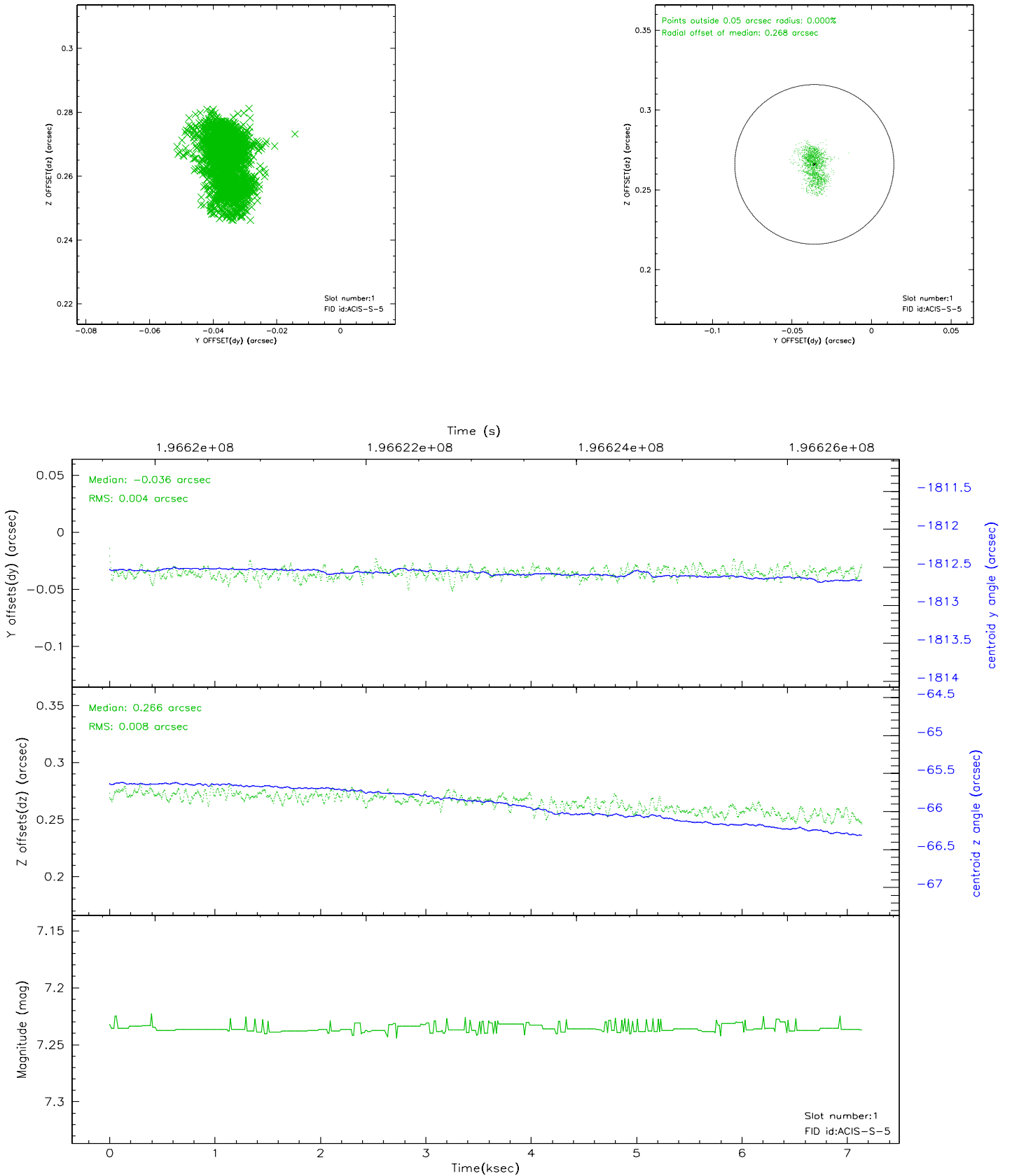


2.5 FID Slots

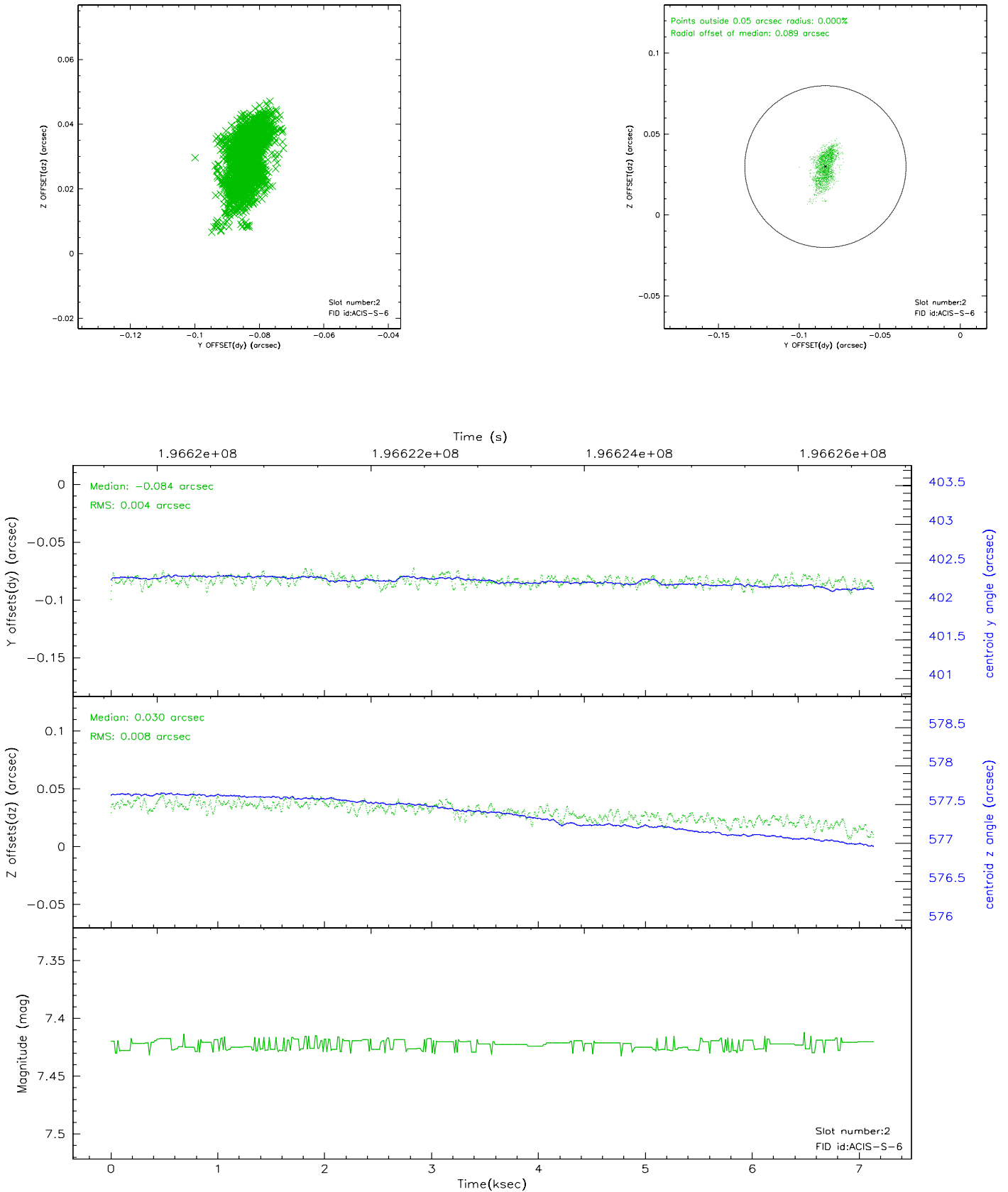
2.5.1 Slot 0



2.5.2 Slot 1



2.5.3 Slot 2



3 Point Sources

A Summary

A.1 Status

V&V Scientist	Beth Sundheim
V&V Date (YYYY-MM-DD)	2006.05.30
V&V Edition	1
V&V Disposition and Status	OK
V&V Charge Time	7.137

A.2 Comments