

V&V Reference Report

L2 ASCDS Version : 8.5.1.1

Observation 4830 - L2 Version 4
Chandra X-Ray Center

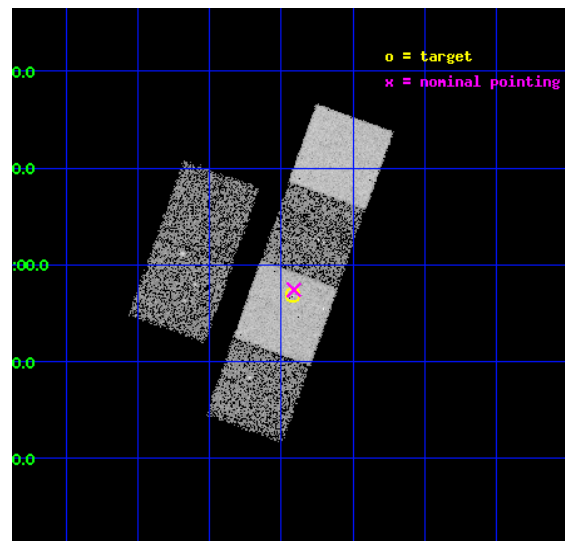
L2 Processing Date : Apr 16 2013

Contents

1	Front	2
2	OBI	3
2.1	OBI	3
2.1.1	Images	3
2.1.2	Bias	3
2.1.3	Parameters	4
2.1.4	Events	4
2.2	Compared Parameters	5
2.3	Aspect	6
2.4	Star Slots	9
2.4.1	Slot 3	9
2.4.2	Slot 4	10
2.4.3	Slot 5	11
2.4.4	Slot 6	12
2.4.5	Slot 7	13
2.5	FID Slots	14
2.5.1	Slot 0	14
2.5.2	Slot 1	15
2.5.3	Slot 2	16
A	Summary	17
A.1	Status	17
A.2	Comments	17

1 Front

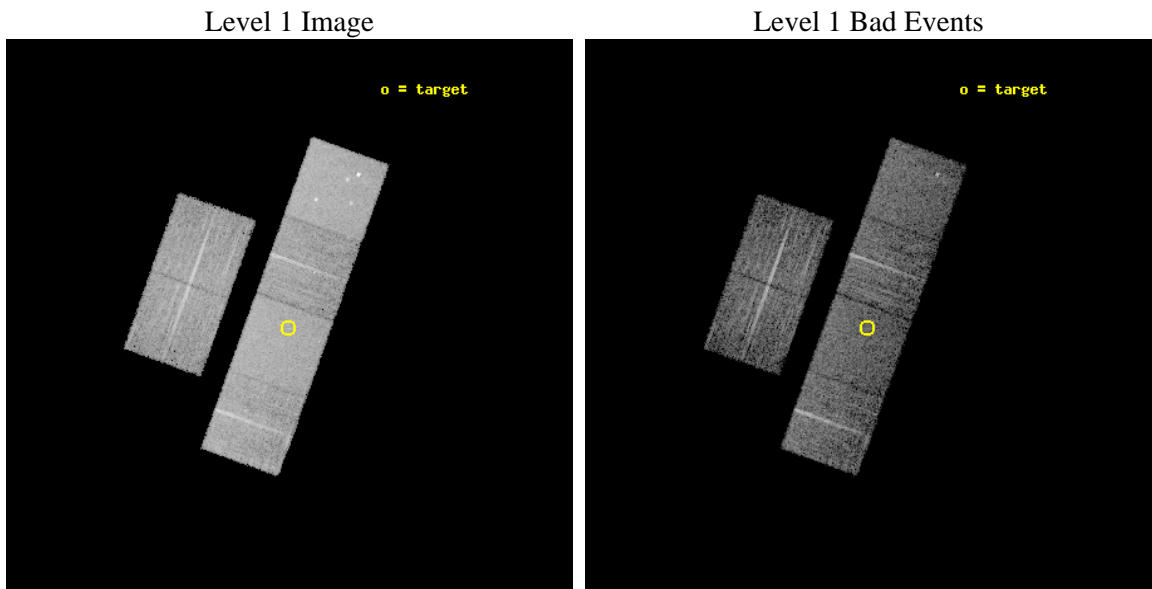
seq_num	700912	Sequence number
obs_id	4830	Observation id
title	Constraining the Hard-X-ray Through Submm SEDs of a Complete Sample of Broad Absorption Line Quasars	Proposal title
observer	Dr. Sarah Gallagher	Principal investigator
object	LBQS 0051-0019	Source name
dtcycle	0	
cycle	P	events from which exps? Prim/Second/Both
ra_targ	13.479583	Observer's specified target RA [deg]
dec_targ	-0.052639	Observer's specified target Dec [deg]
ra_nom	13.477891788404	Nominal RA [deg]
dec_nom	-0.043176597086873	Nominal Dec [deg]
roll_nom	109.76217539733	Nominal Roll [deg]
revision	4	Processing version of data
ontime	7195.6120853126	Sum of GTIs [s]
livetime	7104.496912411	Livetime [s]
ontime2	7195.6531253159	Sum of GTIs [s]
ontime3	7192.2479651272	Sum of GTIs [s]
ontime5	7195.5710453093	Sum of GTIs [s]
ontime6	7195.530005306	Sum of GTIs [s]
ontime7	7195.6120853126	Sum of GTIs [s]
ontime8	7195.4479253292	Sum of GTIs [s]
l2events	79182	Number of level 2 events



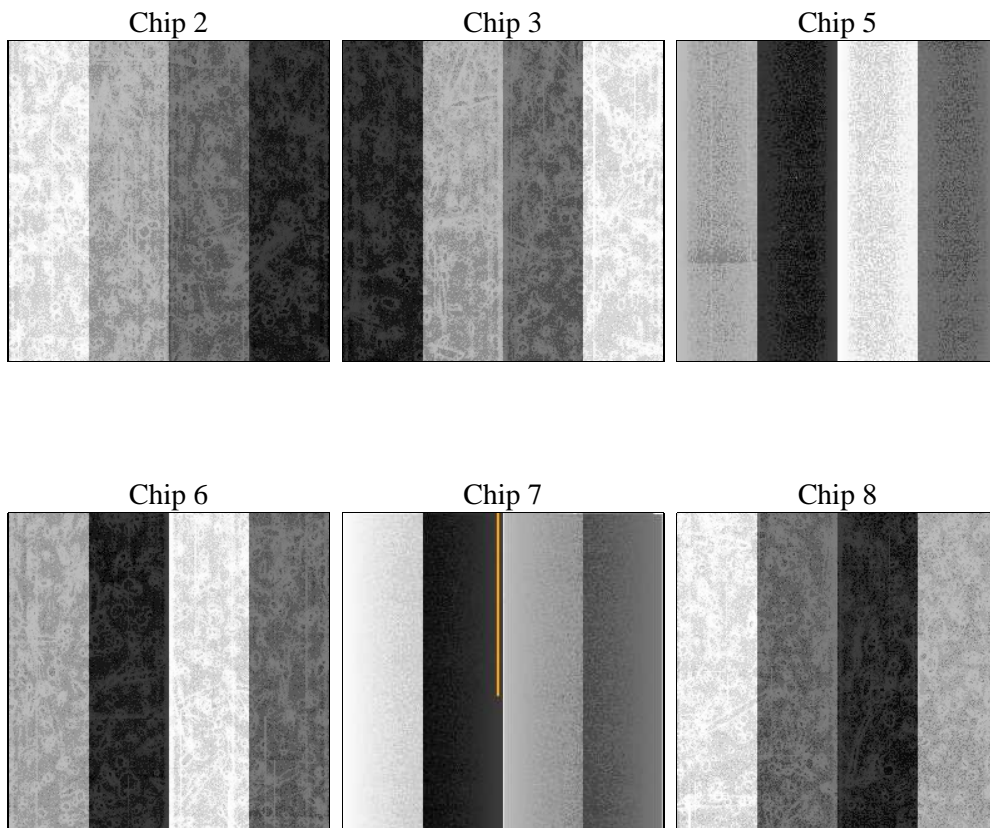
2 OBI

2.1 OBI

2.1.1 Images



2.1.2 Bias



2.1.3 Parameters

obi_num	2	Obi number	sched_exp_time	7238.737000	[s] Scheduled observation exposure time
ascdsver	8.5.1.1	Processing system revision	ontime	7195.6120853126	Sum of GTIs [s]
caldbver	4.5.6	 	ontime2	7195.6531253159	Sum of GTIs [s]
date	2013-04-16T16:42:07	Date and time of file creation	ontime3	7192.2479651272	Sum of GTIs [s]
revision	4	Processing version of data	ontime5	7195.5710453093	Sum of GTIs [s]
			ontime6	7195.530005306	Sum of GTIs [s]
			ontime7	7195.6120853126	Sum of GTIs [s]
			ontime8	7195.4479253292	Sum of GTIs [s]
			l1events	347749	Number of level 1 events

2.1.4 Events

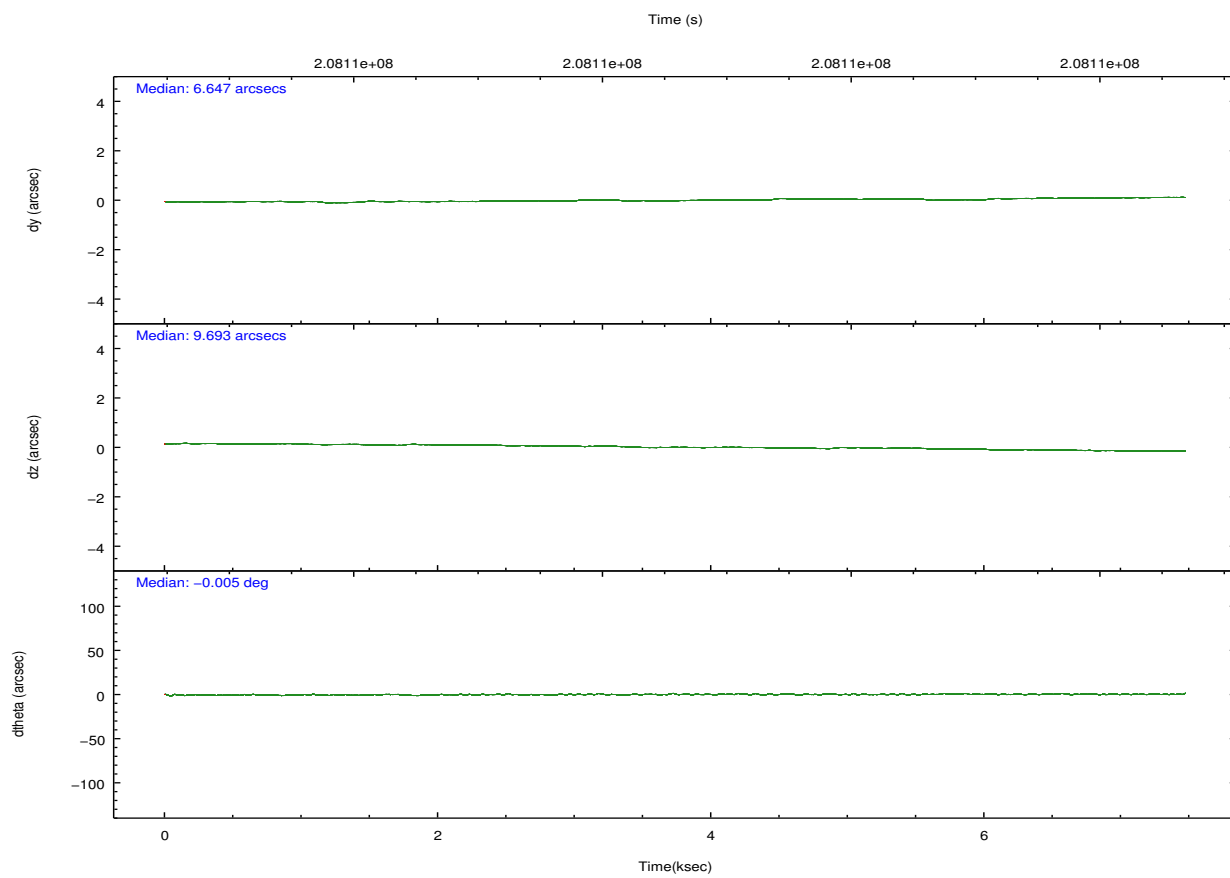
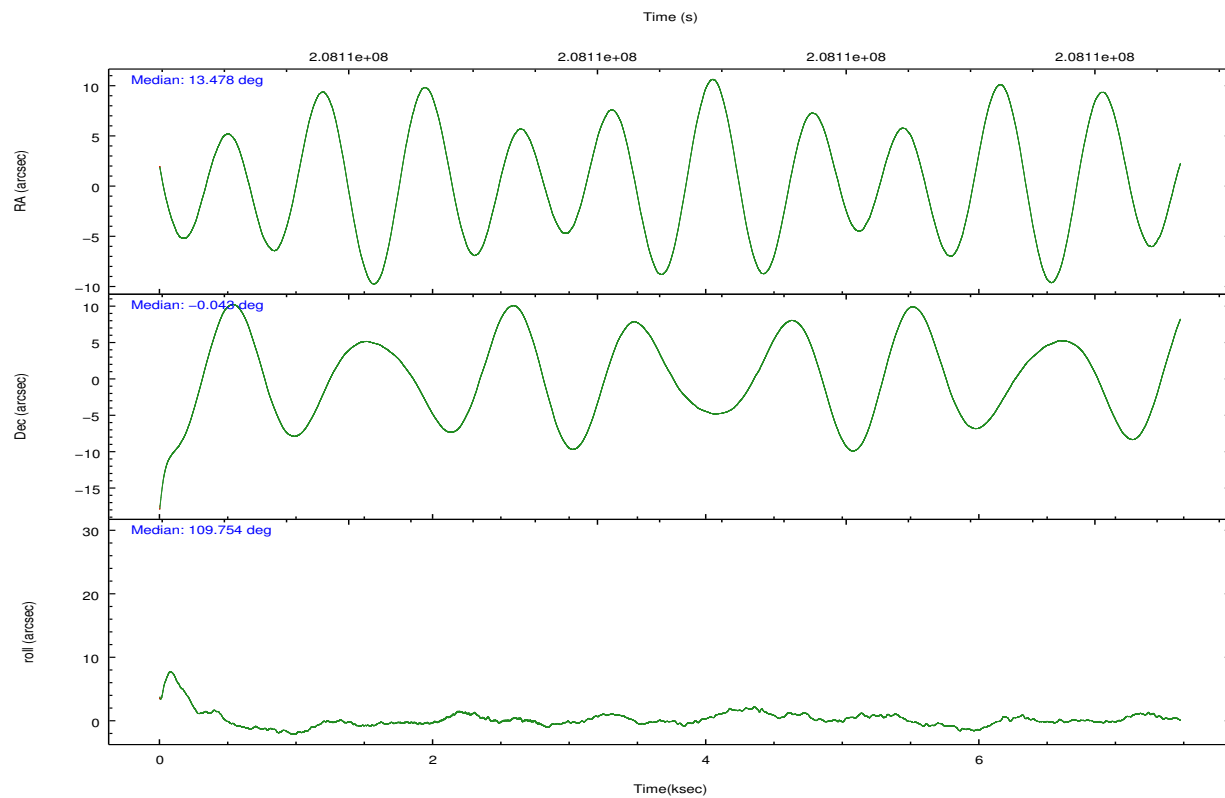
	ccd 2	ccd 3	ccd 5	ccd 6	ccd 7	ccd 8		ccd 2	ccd 3	ccd 5	ccd 6	ccd 7	ccd 8
level 1 events	49616	47587	75041	48843	66676	59986	grade 0 events	2511	2736	3587	2346	2355	4132
rejected events	43906	41665	40324	43000	39132	47016		5%	5%	4%	4%	3%	6%
rejected %	88%	87%	53%	88%	58%	78%	grade 1 events	39	36	92	26	66	35
								0%	0%	0%	0%	0%	0%
							grade 2 events	1158	1097	10815	1163	5399	2760
								2%	2%	14%	2%	8%	4%
							grade 3 events	521	554	1277	592	2508	1405
								1%	1%	1%	1%	3%	2%
							grade 4 events	565	569	1208	539	2386	1316
								1%	1%	1%	1%	3%	2%
							grade 5 events	2047	2119	5382	2197	6340	2911
								4%	4%	7%	4%	9%	4%
							grade 6 events	964	973	17863	1209	14905	3362
								1%	2%	23%	2%	22%	5%
							grade 7 events	41811	39503	34817	40771	32717	44065
								84%	83%	46%	83%	49%	73%

2.2 Compared Parameters

Parameter	Planned	Actual
Instrument	ACIS	ACIS
Detector	ACIS-235678	ACIS-235678
Grating	NONE	NONE
Data mode	FAINT	FAINT
Observation mode	POINTING	POINTING
[deg] Pointing RA	13.498982	13.47789178840368
[deg] Pointing Dec	-0.060408	-0.04317659708687326
[deg] Pointing Roll	109.605568	109.7621753973284
[mm] SIM focus pos	-0.684267	-0.6828225247311905
[mm] SIM defocus	0	0.001444936568705701
[mm] SIM translation stage pos	-190.132523	-190.1400660498719
[mm] SIM translation stage offset	0	0.00754346686406393
[s] Observation start time (MET)	208107085.184000	208106093.15067
Observation start date	2004-08-05T15:30:21	2004-08-05T15:14:53
[s] Observation end time (MET)	208114324.184000	208114547.86354
Observation end date	2004-08-05T17:31:00	2004-08-05T17:35:47
Read mode	TIMED	TIMED

Parameter	Planned	Actual
Obspar format version number	7	7
Obspar file type	PREDICTED	ACTUAL
Obspar update status	NONE	UPDATED
Number of optional ACIS chips dropped	0	0
On-chip summing requested	N	N
Subarray requested	NONE	NONE
Alternating exposures requested	N	N
[s] Primary exposure time	0.000000	3.2

2.3 Aspect

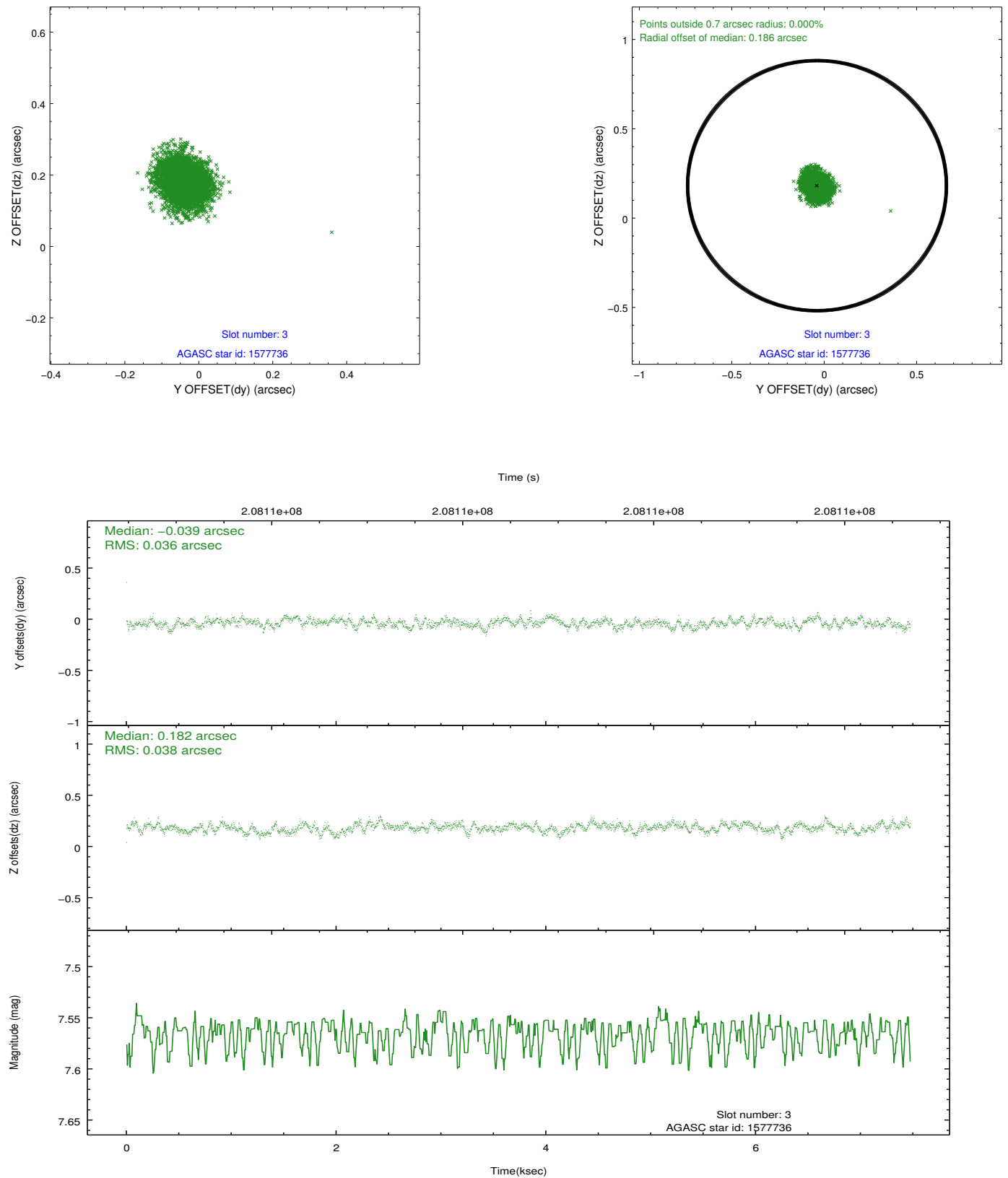


Slot Statistics

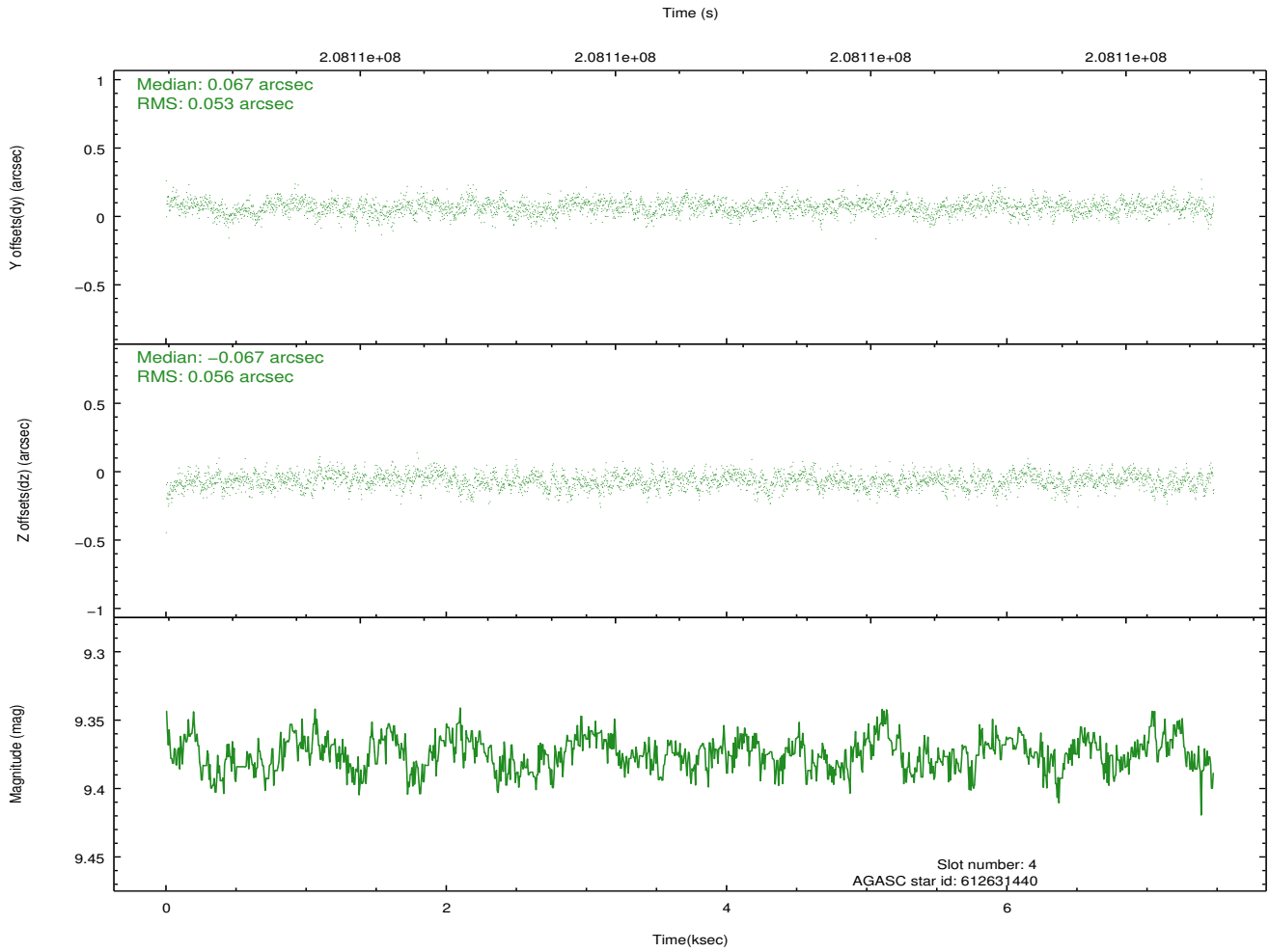
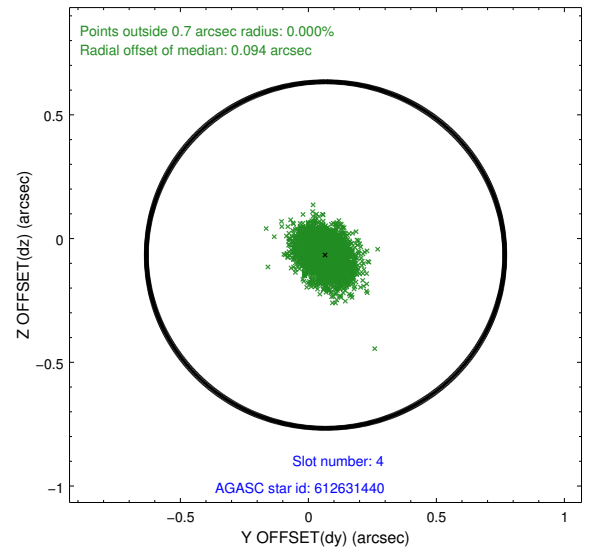
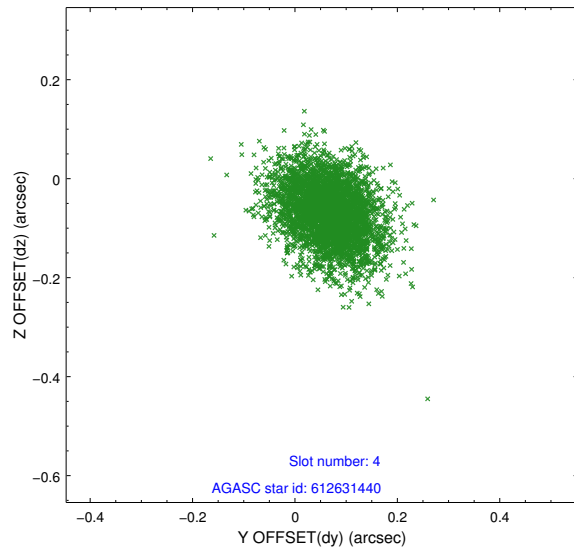
slot	status	id	mag	n_pts	med_dy	med_dz	dr1	dr2	ra	dec	mean_y	mean_z
0	FID	ACIS-S-2	7.10	1824	-0.049	-0.023	0.011	0.019	0.000000	0.000000	-759.41	-1730.98
1	FID	ACIS-S-4	7.20	1824	0.070	0.029	0.011	0.030	0.000000	0.000000	2153.61	176.81
2	FID	ACIS-S-5	7.23	1824	-0.054	0.002	0.010	0.017	0.000000	0.000000	-1811.31	171.26
3	GUIDE	1577736	7.56	3645	-0.039	0.182	0.055	0.089	13.888277	0.019580	-198.67	-1416.49
4	GUIDE	612631440	9.37	3643	0.067	-0.067	0.082	0.136	13.345518	-0.775803	-2240.68	1384.01
5	GUIDE	612633056	9.40	3643	-0.064	-0.179	0.079	0.130	13.071720	-0.364507	-515.92	1816.43
6	GUIDE	612637176	9.33	3647	0.005	-0.059	0.084	0.136	13.226494	-0.447694	-984.23	1392.43
7	GUIDE	612634776	9.32	3642	0.031	0.125	0.084	0.133	14.252004	-0.472149	-2305.64	-2056.08

2.4 Star Slots

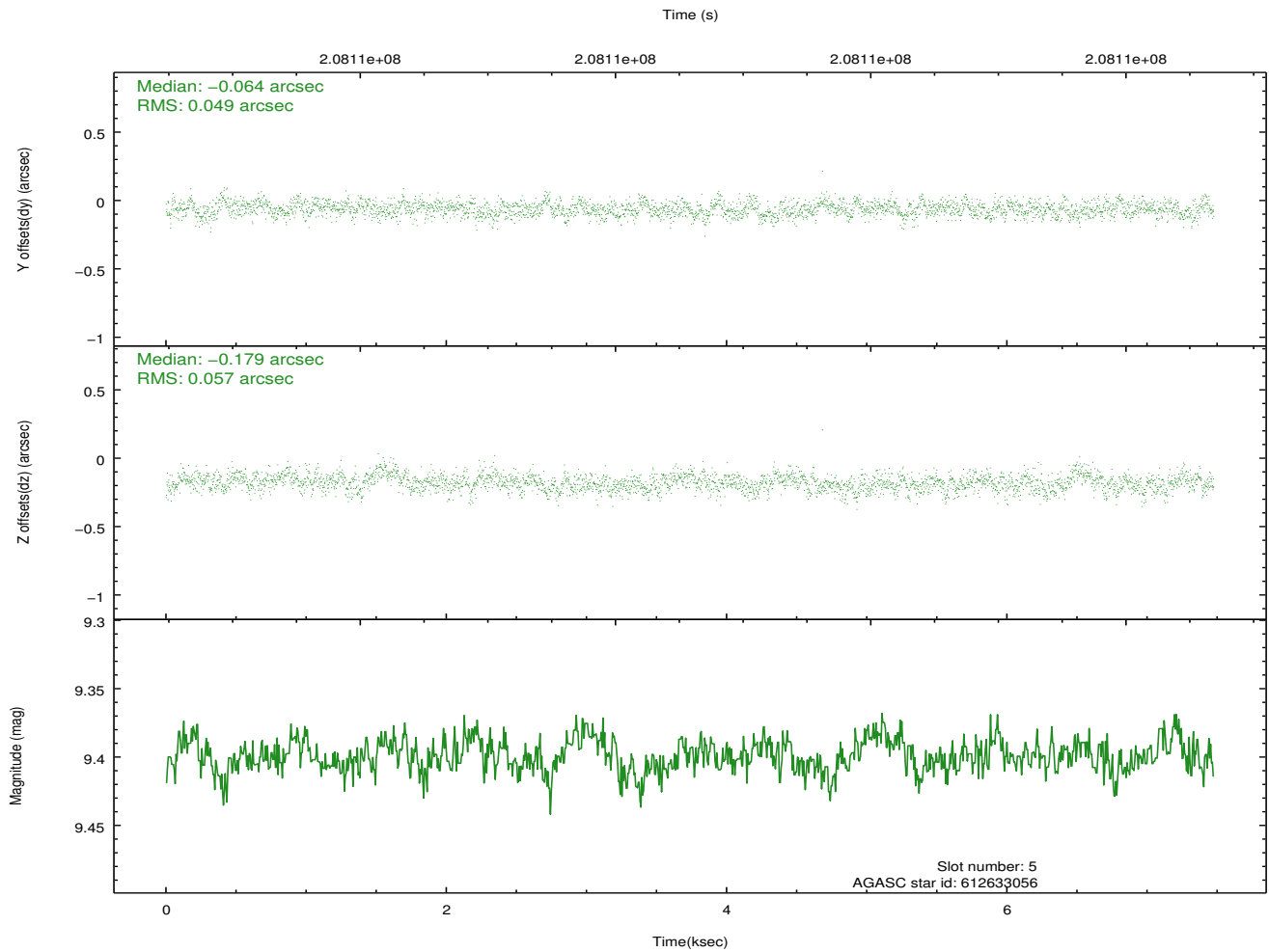
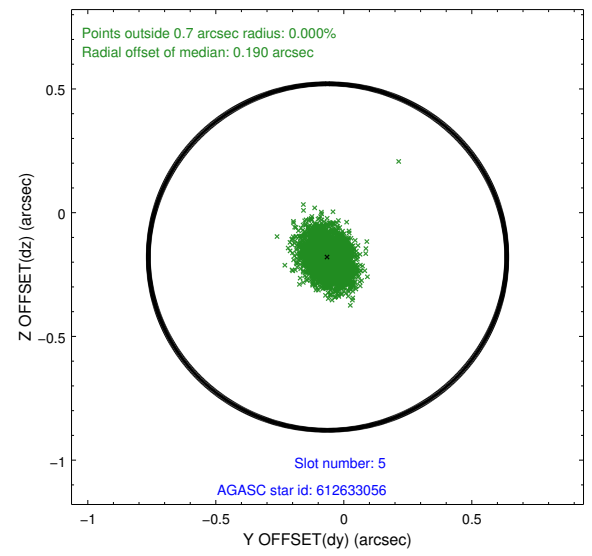
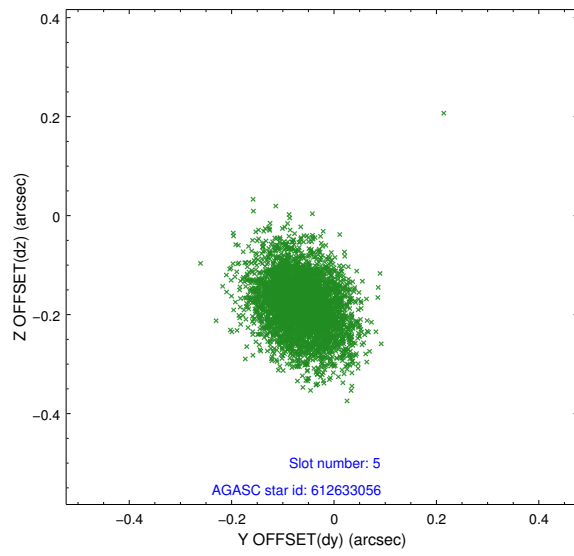
2.4.1 Slot 3



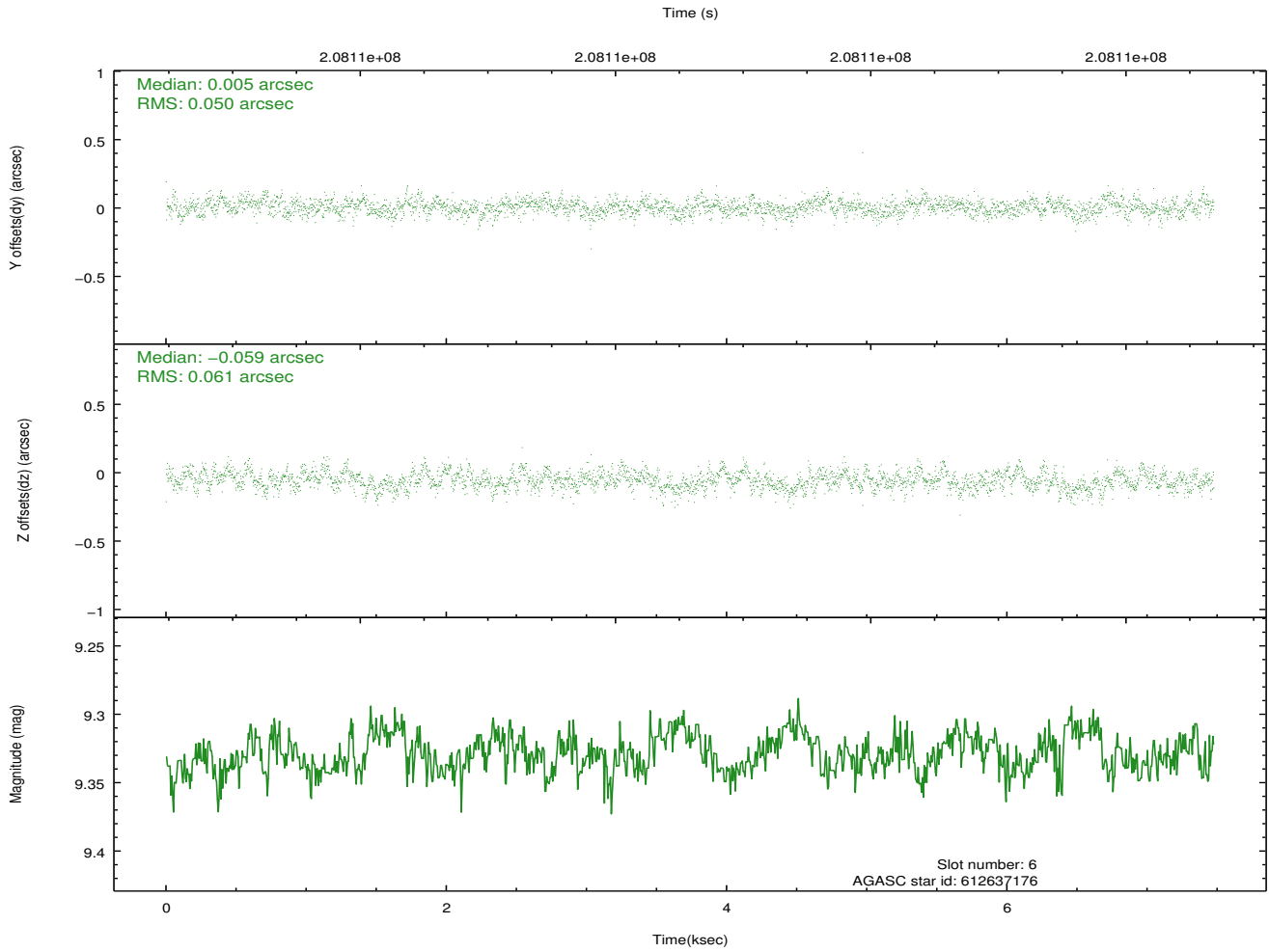
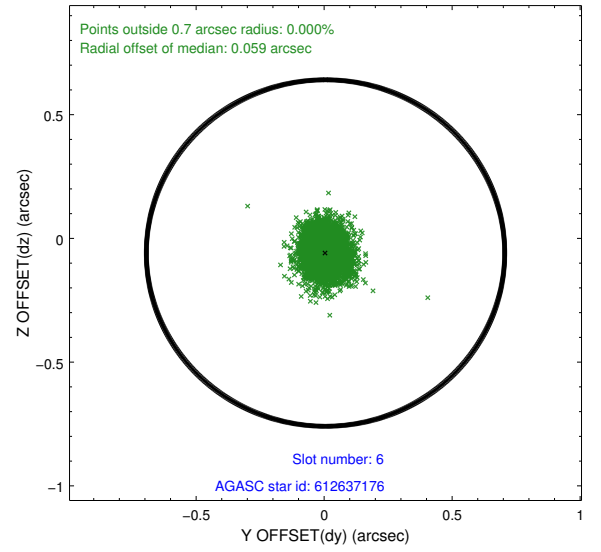
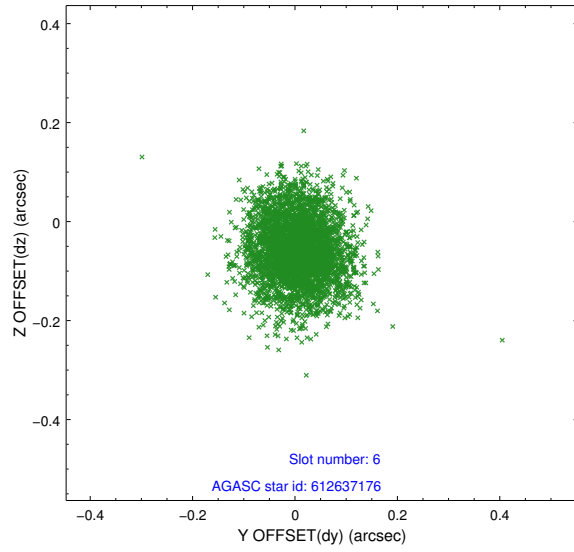
2.4.2 Slot 4



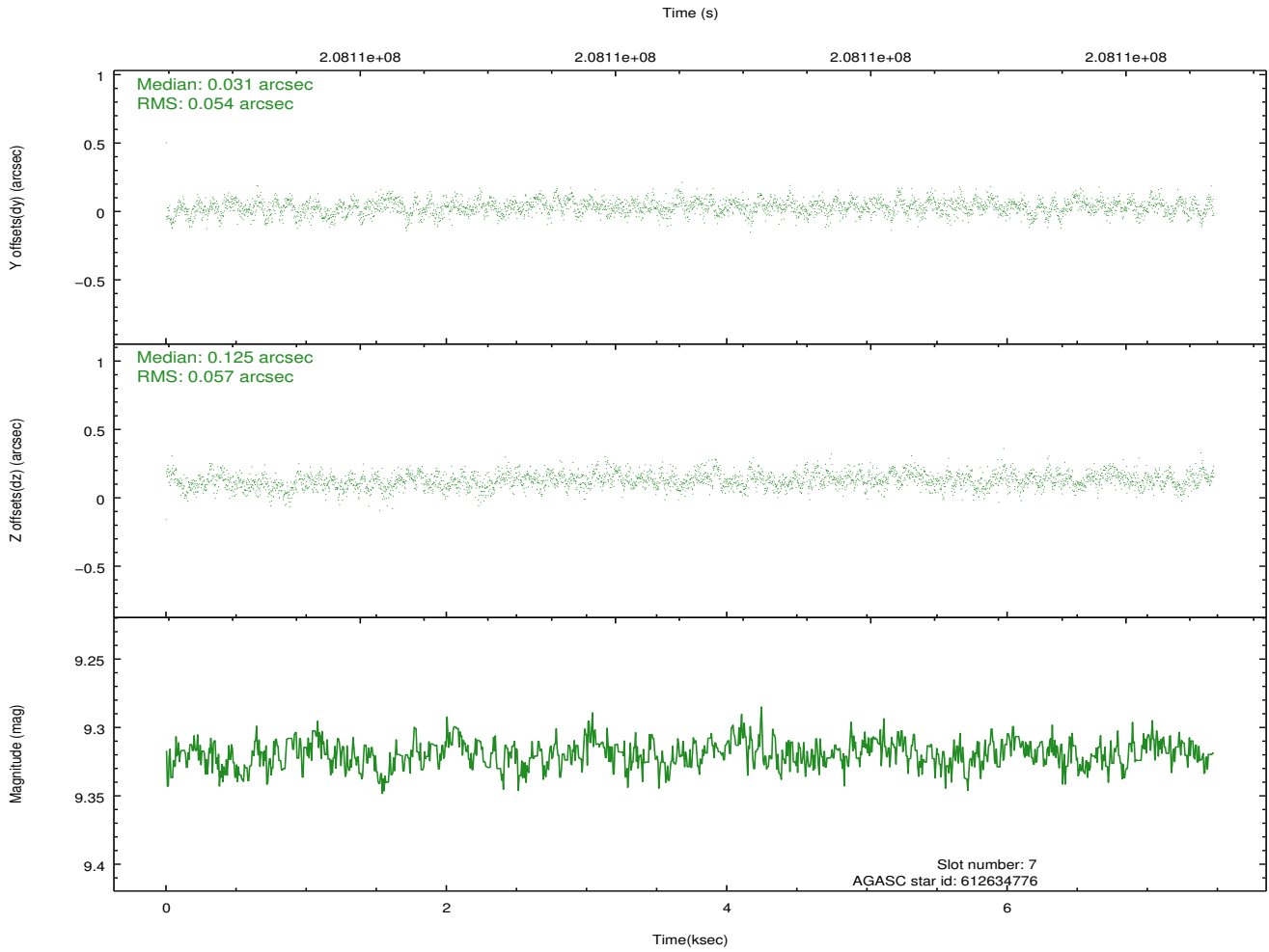
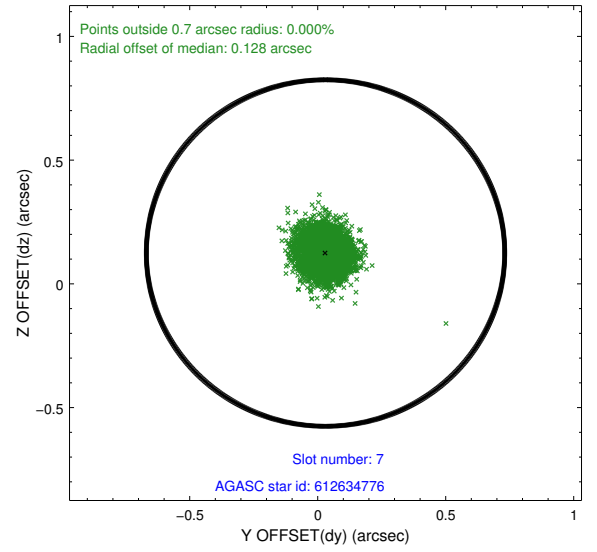
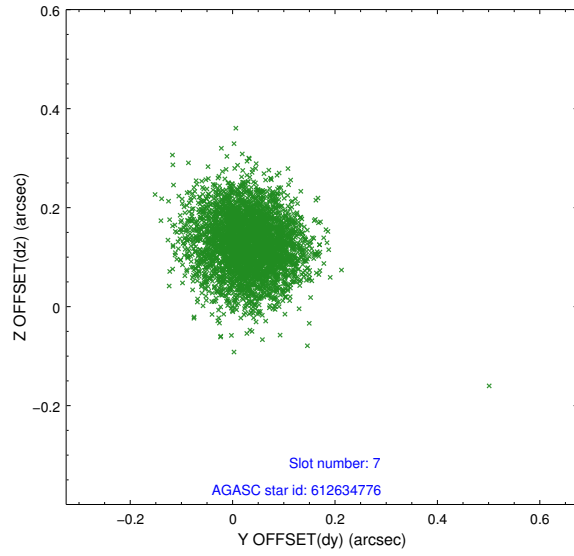
2.4.3 Slot 5



2.4.4 Slot 6

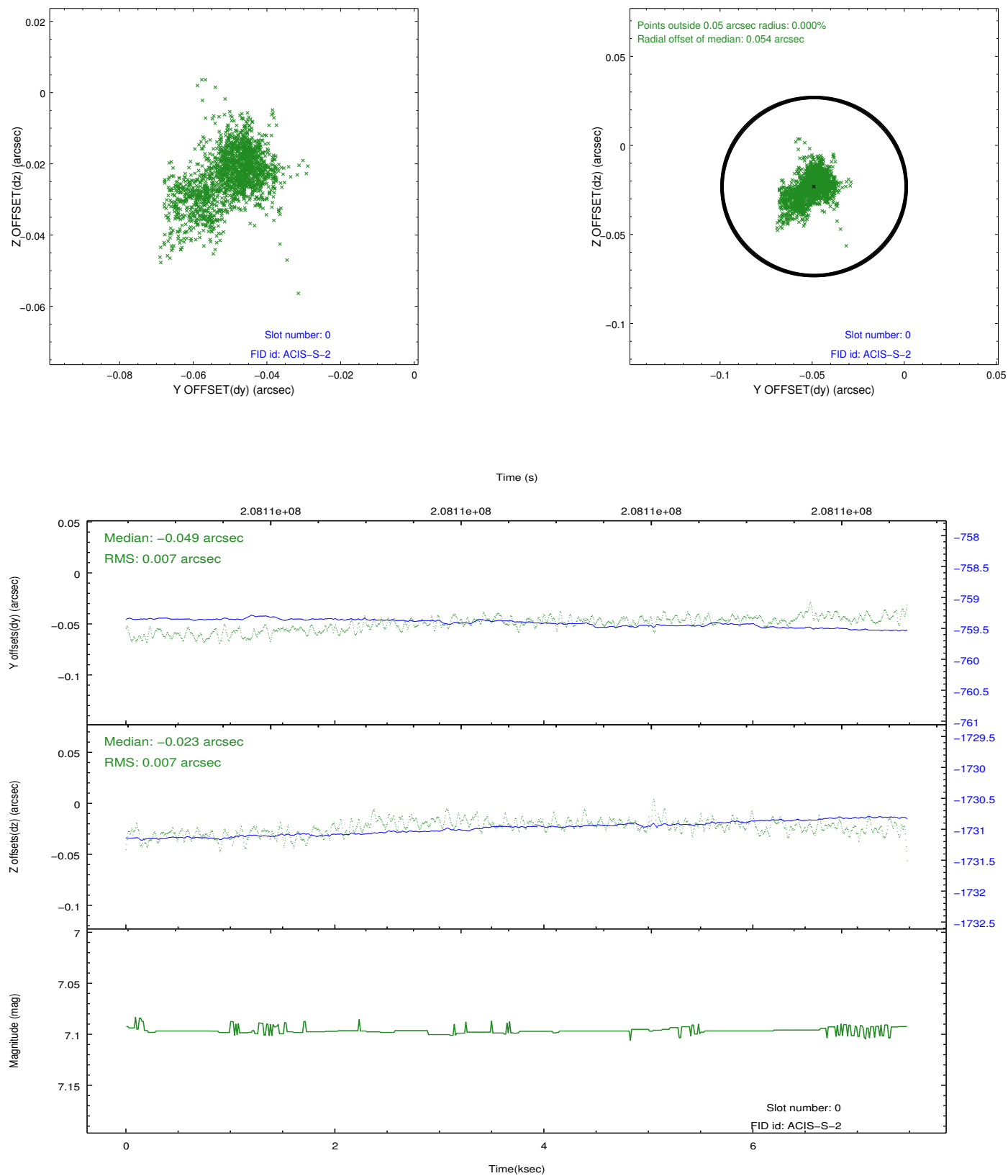


2.4.5 Slot 7

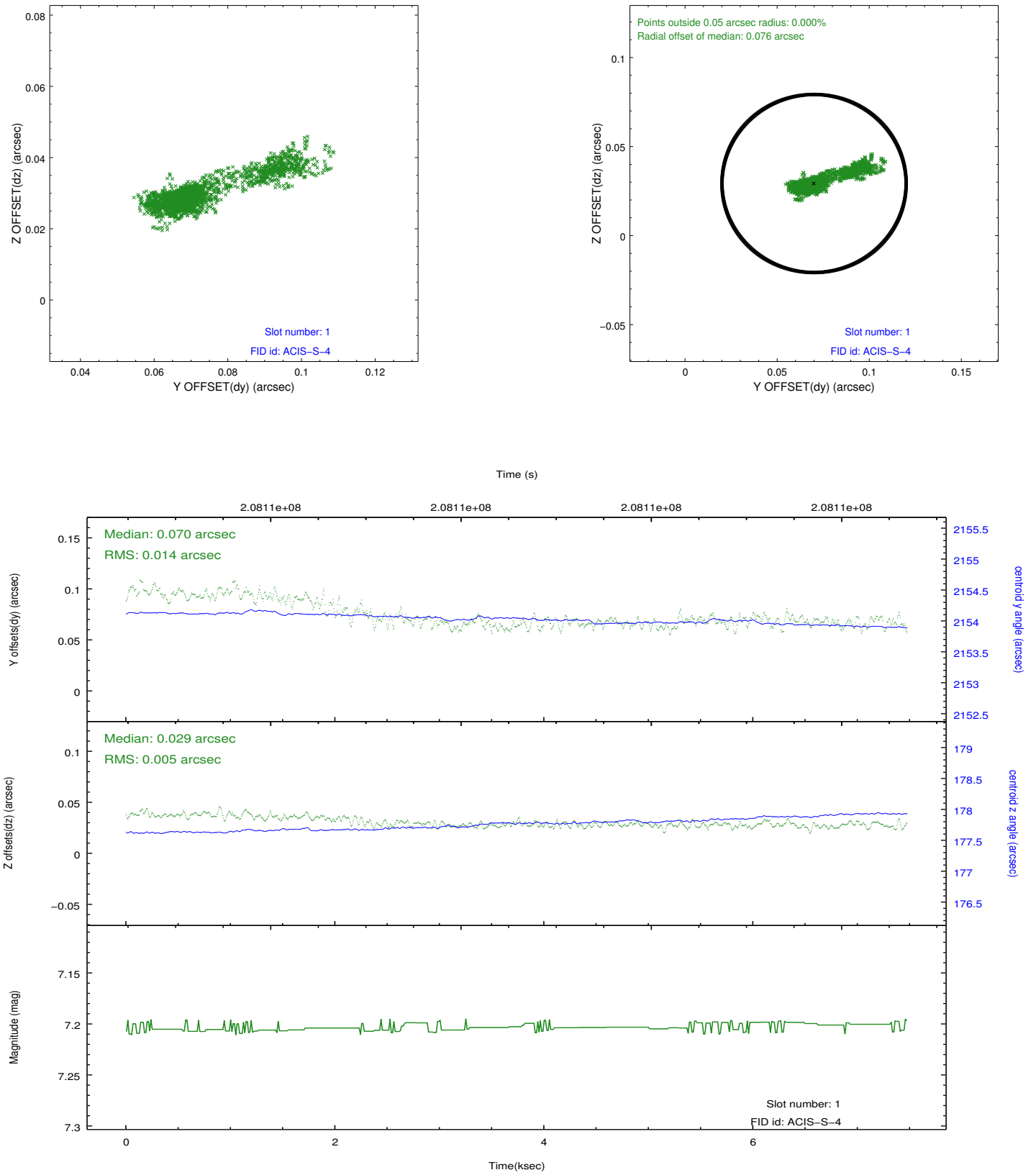


2.5 FID Slots

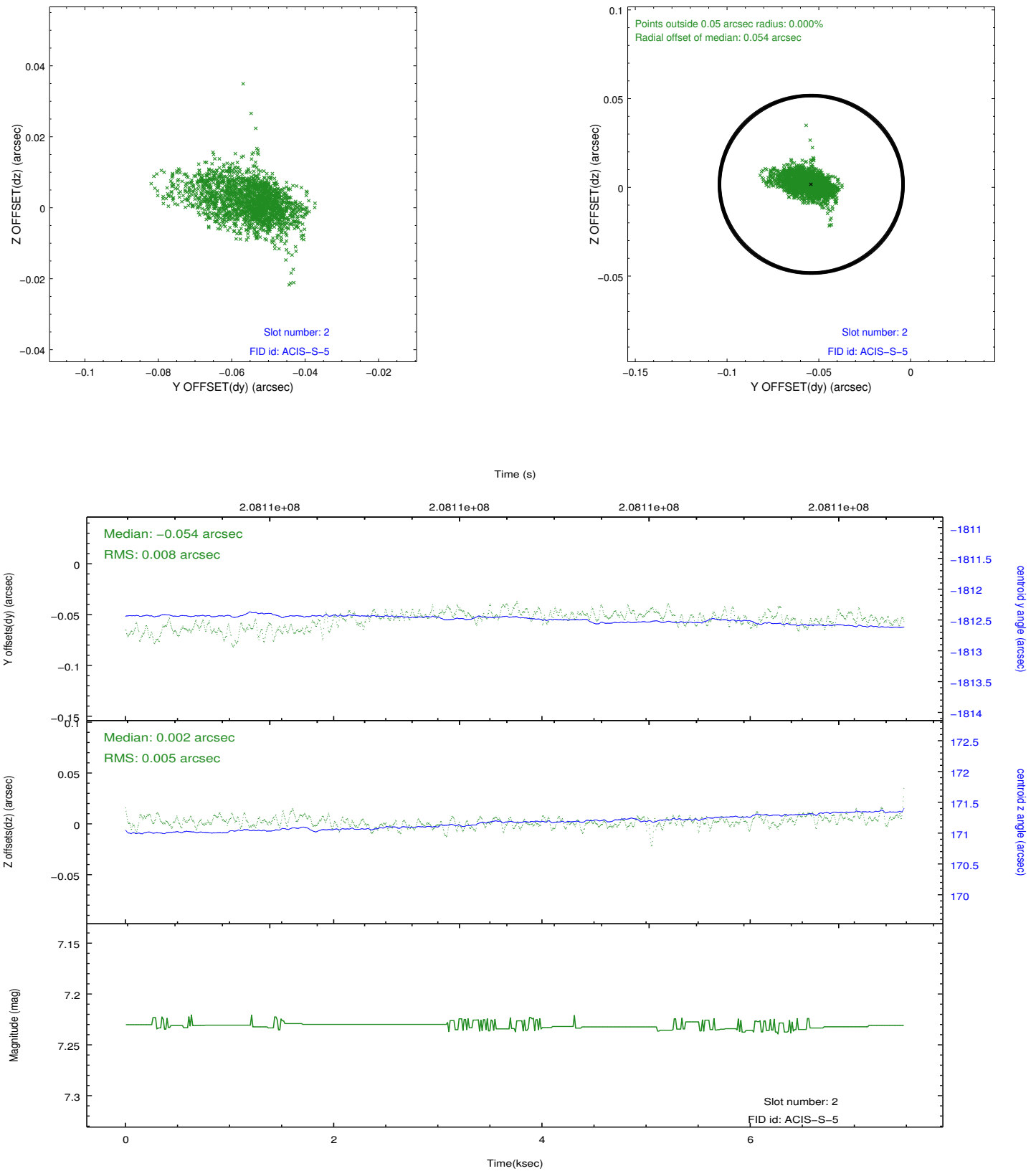
2.5.1 Slot 0



2.5.2 Slot 1



2.5.3 Slot 2



A Summary

A.1 Status

V&V Scientist	Jen Lauer
V&V Date (YYYY-MM-DD)	2013.04.17
V&V Edition	1
V&V Disposition and Status	OK
V&V Charge Time	7.196

A.2 Comments

A spatial region of the original bias map for CCD = 6 suffered from anomalously high data values. Pixels in the event data that were bias-corrected by one of the original affected bias pixels may have an apparent energy shift. While the change in energy is expected to be small (~ 20 eV), it depends on many parameters that have not yet been fully explored for this bias anomaly. The bias map for CCD = 6 has been reconstructed for this processing to remove this anomaly using scaled data from a comparable bias map from another observation. The pixels affected by the anomaly are bounded by sky coords:
(13.35577,0.09015),(13.35716,0.08629),(13.48852,0.13362),(13.48713,0.13748)