

V&V Reference Report

L2 ASCDS Version : 7.6.7

Observation 4740 - L2 Version 002
Chandra X-Ray Center

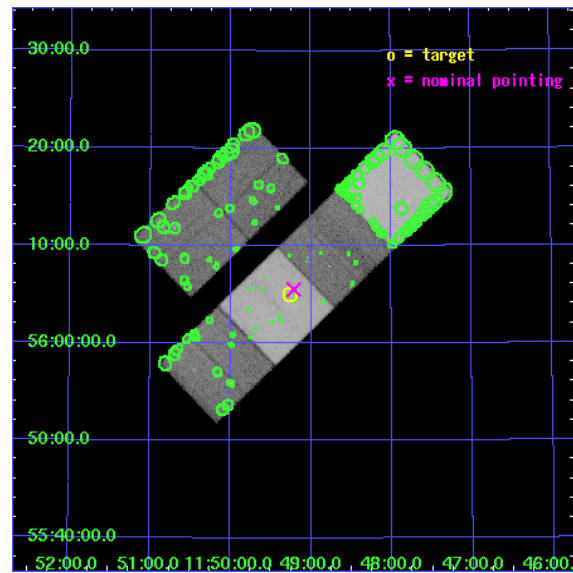
L2 Processing Date: Feb 22 2006

Contents

1	Front	2
2	OBI	3
2.1	OBI	3
2.1.1	Images	3
2.1.2	Bias	3
2.1.3	Parameters	4
2.1.4	Events	4
2.2	Compared Parameters	5
2.3	Aspect	6
2.4	Star Slots	9
2.4.1	Slot 3	9
2.4.2	Slot 4	10
2.4.3	Slot 5	11
2.4.4	Slot 6	12
2.4.5	Slot 7	13
2.5	FID Slots	14
2.5.1	Slot 0	14
2.5.2	Slot 1	15
2.5.3	Slot 2	16
3	Point Sources	17
A	Summary	18
A.1	Status	18
A.2	Comments	18

1 Front

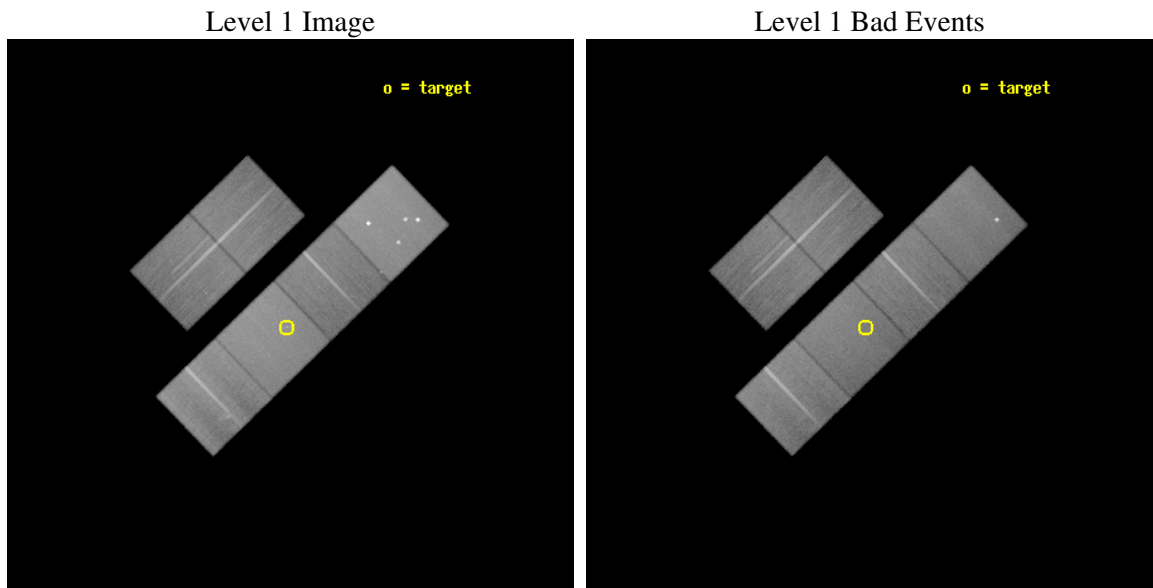
seq_num	600395
obs_id	4740
title	How Does Hot and Cold Gas Interact in Galaxies?
observer	Dr. Jimmy Irwin
object	NGC3898
dtcycle	0
cycle	P
ra_targ	177.313333
dec_targ	56.084444
ra_nom	177.30319123914
dec_nom	56.092265321345
roll_nom	135.94451706692
revision	2
ontime	58175.999783278
livetime	57439.34024464
ontime2	58175.999783278
ontime3	58172.758783072
ontime5	58175.999783278
ontime6	58175.999783278
ontime7	58175.999783278
ontime8	58172.758882523
l2events	650253



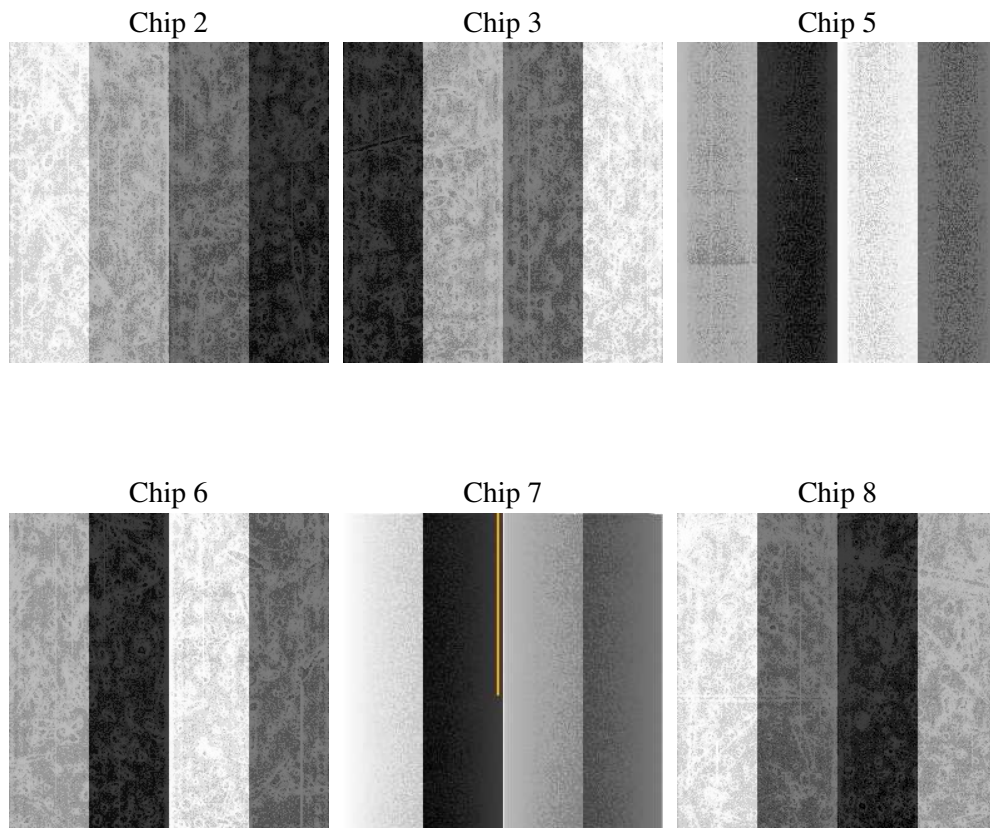
2 OBI

2.1 OBI

2.1.1 Images



2.1.2 Bias



2.1.3 Parameters

obi_num	0
ascdsver	7.6.7
caldsver	3.2.1
date	2006-02-22T23:55:17
revision	2

sched_exp_time	58000.000000
ontime	58227.984484285
ontime2	58227.984464347
ontime3	58227.984494239
ontime5	58227.984484285
ontime6	58227.984464347
ontime7	58227.984484285
ontime8	58227.984593689
l1events	2987393

2.1.4 Events

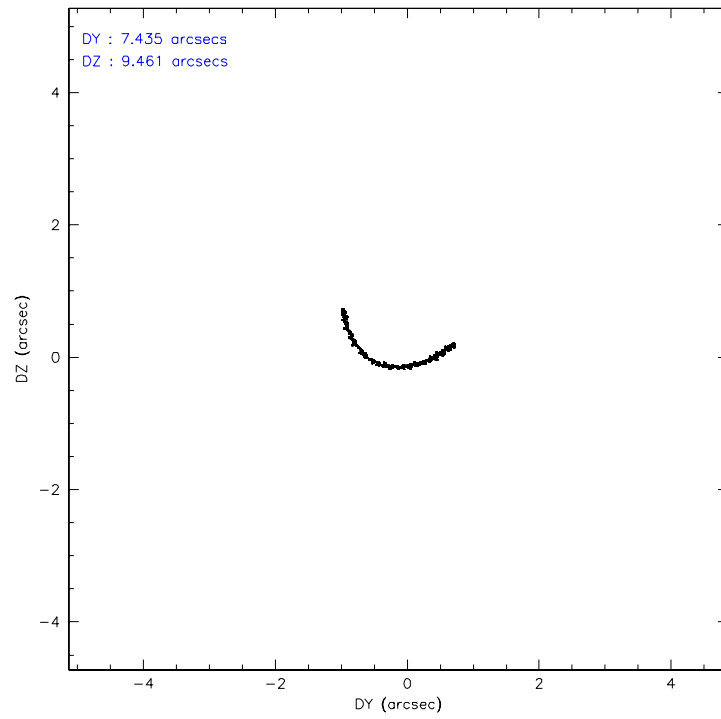
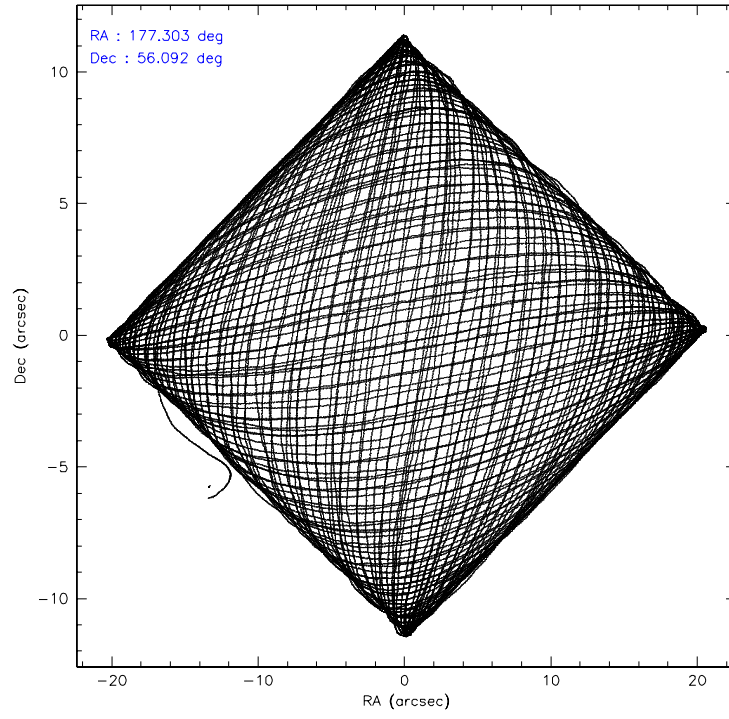
	ccd 2	ccd 3	ccd 5	ccd 6	ccd 7	ccd 8
level 1 events	420109	405052	647058	418617	567143	529414
rejected events	370566	356284	353872	368322	349739	413513
rejected %	88%	87%	54%	87%	61%	78%

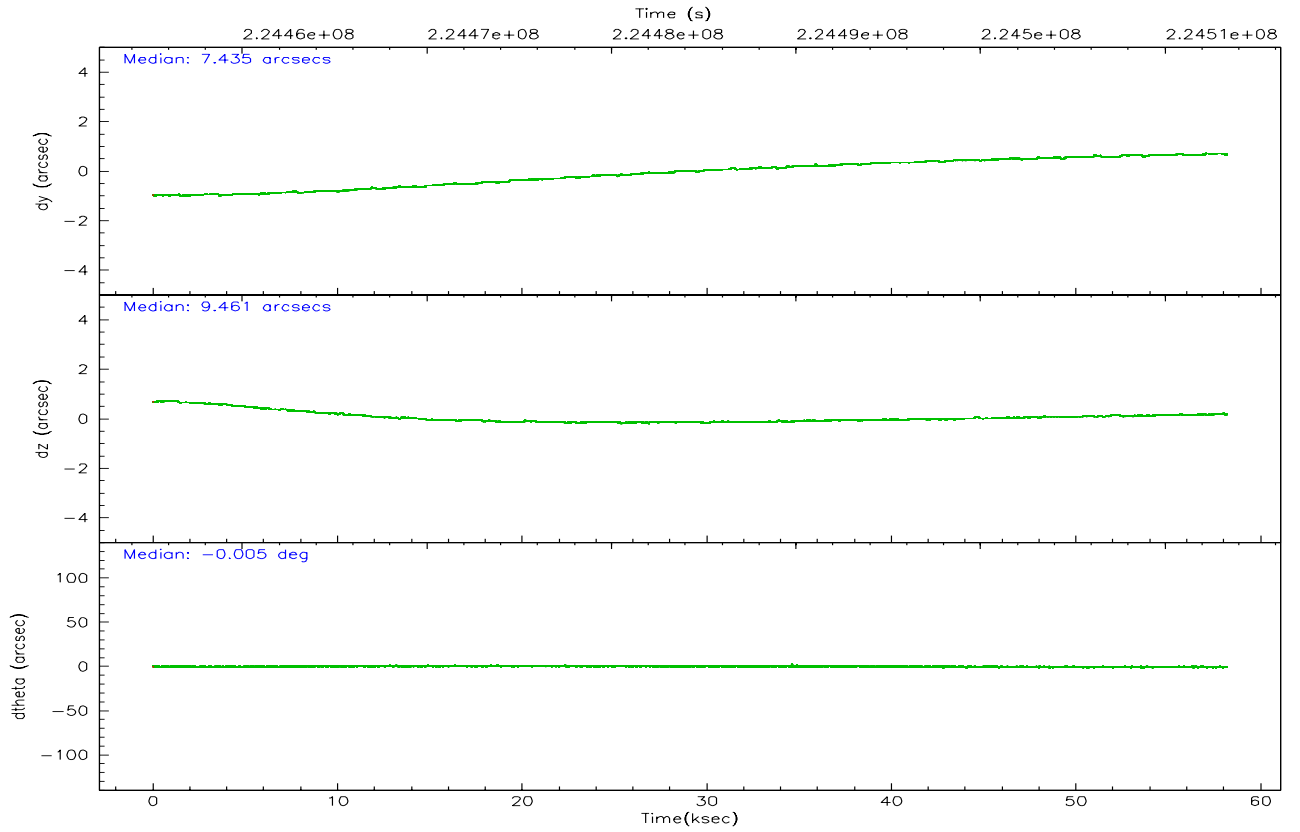
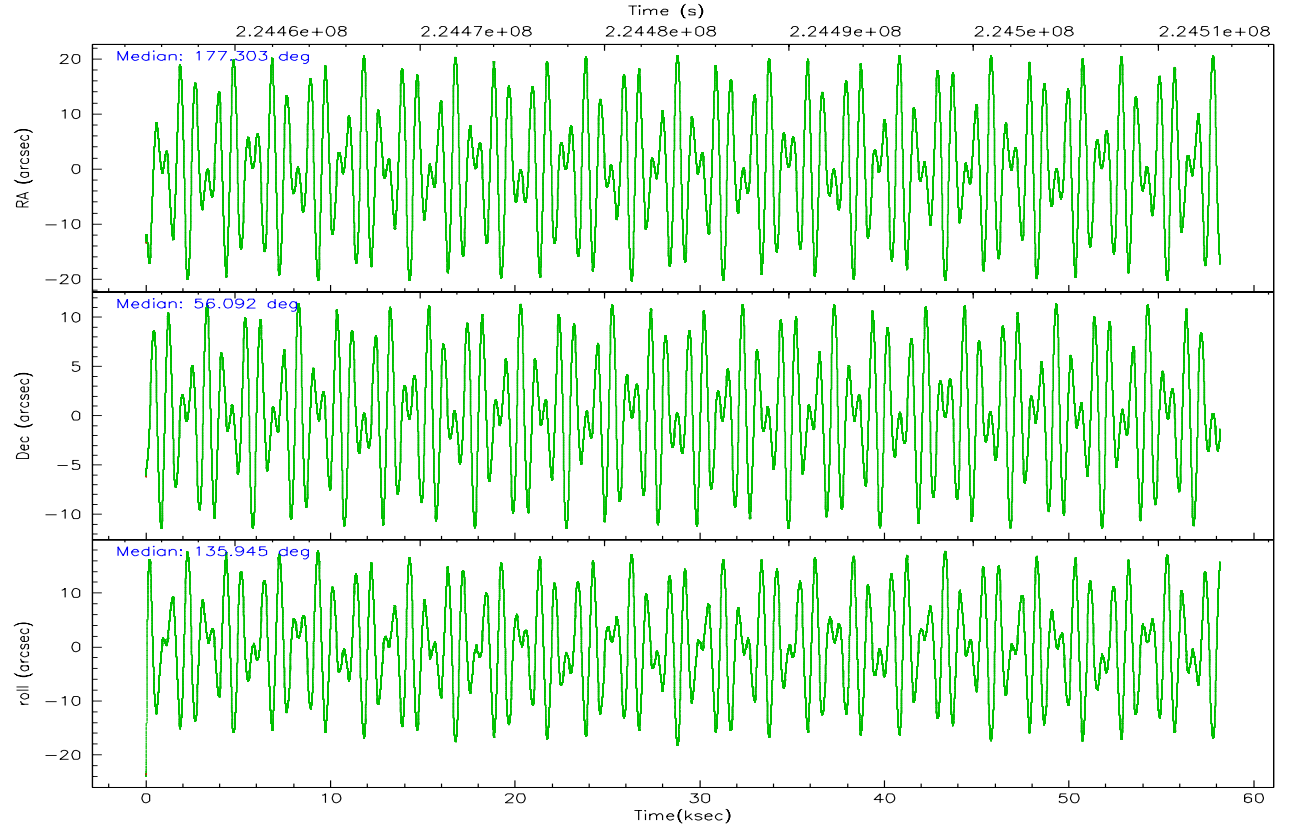
	ccd 2	ccd 3	ccd 5	ccd 6	ccd 7	ccd 8
grade 0 events	21929	21554	37882	19901	12979	37436
	5%	5%	5%	4%	2%	7%
grade 1 events	245	274	511	205	339	373
	0%	0%	0%	0%	0%	0%
grade 2 events	10158	9332	86635	10555	54153	25467
	2%	2%	13%	2%	9%	4%
grade 3 events	4562	4661	6773	4911	11145	12122
	1%	1%	1%	1%	1%	2%
grade 4 events	4665	4741	5433	4764	10729	11244
	1%	1%	0%	1%	1%	2%
grade 5 events	16754	18956	32884	19754	37722	25459
	3%	4%	5%	4%	6%	4%
grade 6 events	8273	8533	156729	10204	128595	29719
	1%	2%	24%	2%	22%	5%
grade 7 events	353523	337001	320211	348323	311481	387594
	84%	83%	49%	83%	54%	73%

2.2 Compared Parameters

Parameter	Planned	Actual	Parameter	Planned	Actual
Instrument	ACIS	ACIS	Obspar format version number	6	6
Detector	ACIS-235678	ACIS-235678	Obspar file type	PREDICTED	ACTUAL
Grating	NONE	NONE	Obspar update status	NONE	UPDATED
Data mode	VFAINT	VFAINT	On-chip summing requested	N	N
Observation mode	POINTING	POINTING	Subarray requested	NONE	NONE
Pointing RA	177.350691	177.3031912391387	Alternating exposures requested	N	N
Pointing Dec	56.086015	56.09226532134484	Primary exposure time	0.000000	3.2
Pointing Roll	135.748478	135.9445170669249			
SIM focus pos (mm)	-0.684267	-0.6828225247311905			
SIM defocus (mm)	0	0.001444936568705701			
SIM translation stage pos (mm)	-190.132523	-190.1400660498719			
SIM translation stage offset (mm)	0	0.00754346686406393			
Observation start time	224455358.184000	224454264.24634			
Observation start date	2005-02-10T20:41:34	2005-02-10T20:24:24			
Observation end time	224513358.184000	224514182.67405			
Observation end date	2005-02-11T12:48:14	2005-02-11T13:03:02			
Read mode	TIMED	TIMED			

2.3 Aspect



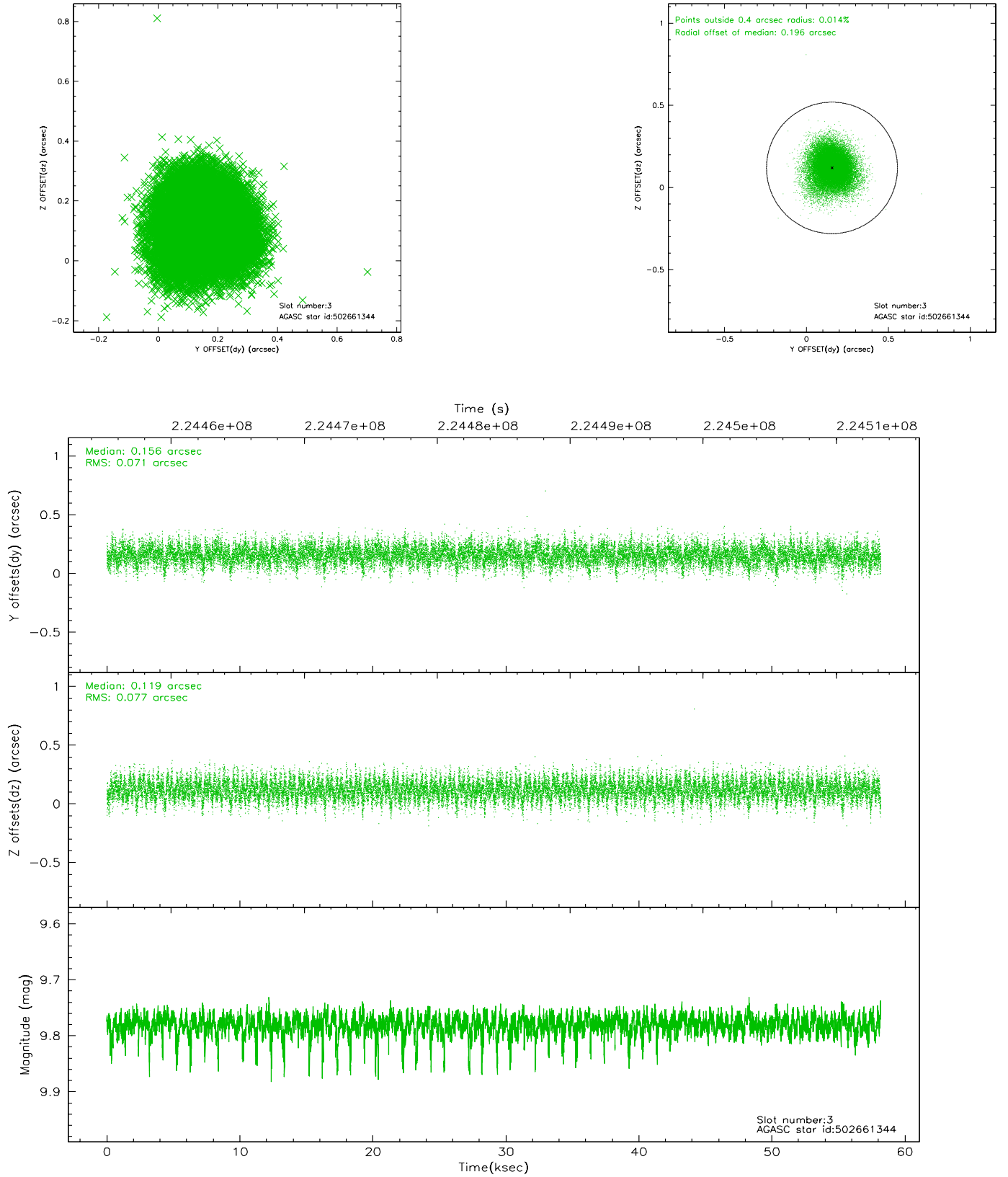


Slot Statistics

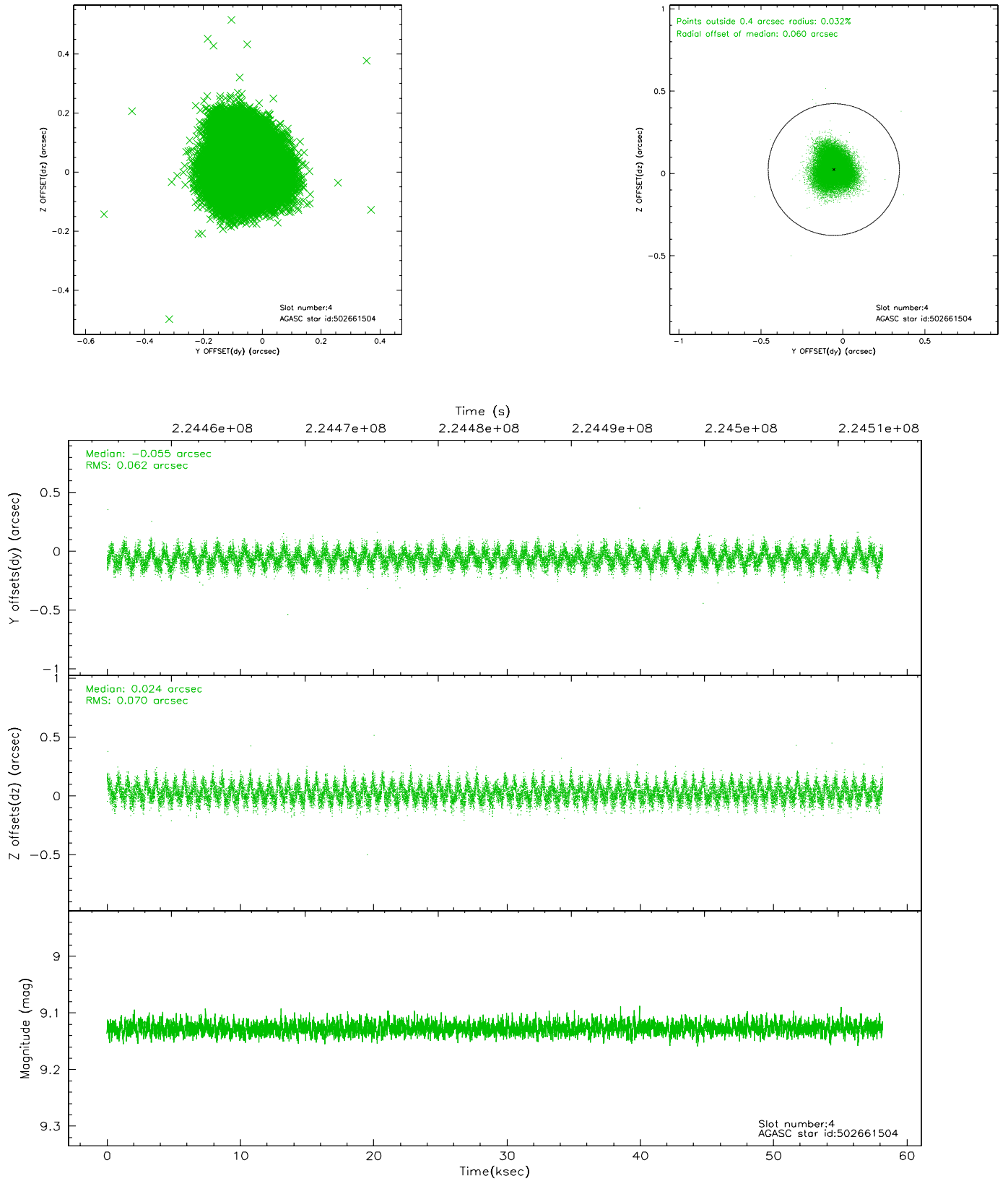
slot	status	id	mag	n_pts	med_dy	med_dz	dr1	dr2	ra	dec	mean_y	mean_z
0	FID	ACIS-S-2	7.10	14192	-0.028	-0.010	0.013	0.029	0.000000	0.000000	-760.12	-1730.78
1	FID	ACIS-S-4	7.21	14191	0.049	0.017	0.014	0.024	0.000000	0.000000	2153.23	177.81
2	FID	ACIS-S-5	7.23	14190	-0.057	0.004	0.022	0.047	0.000000	0.000000	-1813.06	171.36
3	GUIDE	502661344	9.78	28338	0.156	0.119	0.111	0.183	176.994635	56.171799	728.00	275.62
4	GUIDE	502661504	9.13	28372	-0.055	0.024	0.101	0.156	176.644118	56.055641	946.10	1064.79
5	GUIDE	502661768	7.72	28379	0.079	-0.200	0.070	0.113	177.146660	55.540024	-1073.45	1697.41
6	GUIDE	502794304	9.86	28294	-0.031	0.167	0.118	0.203	177.861749	55.580199	-2013.04	576.16
7	GUIDE	502664824	6.93	28382	-0.148	-0.110	0.083	0.125	175.793574	56.019745	2101.93	2331.94

2.4 Star Slots

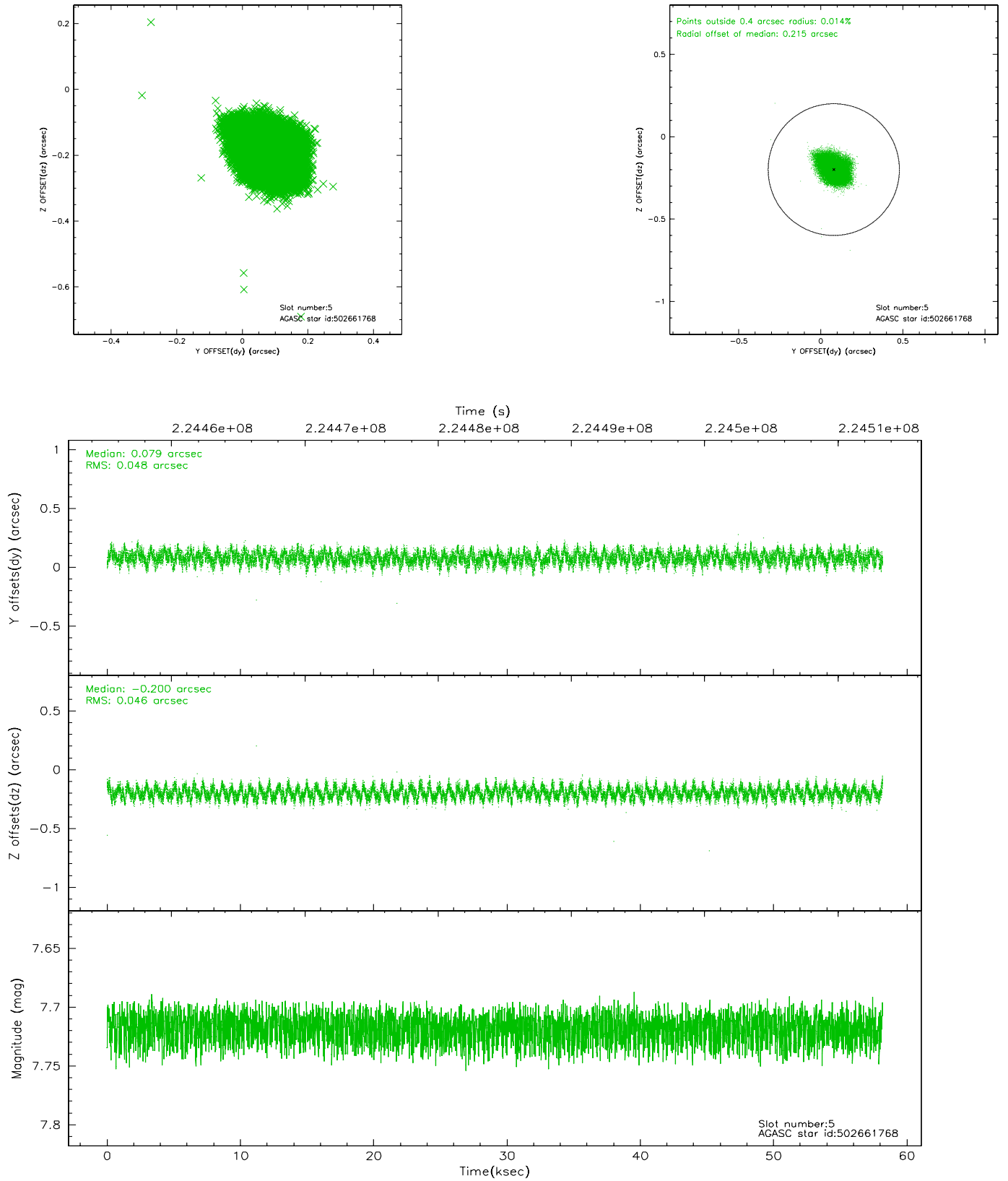
2.4.1 Slot 3



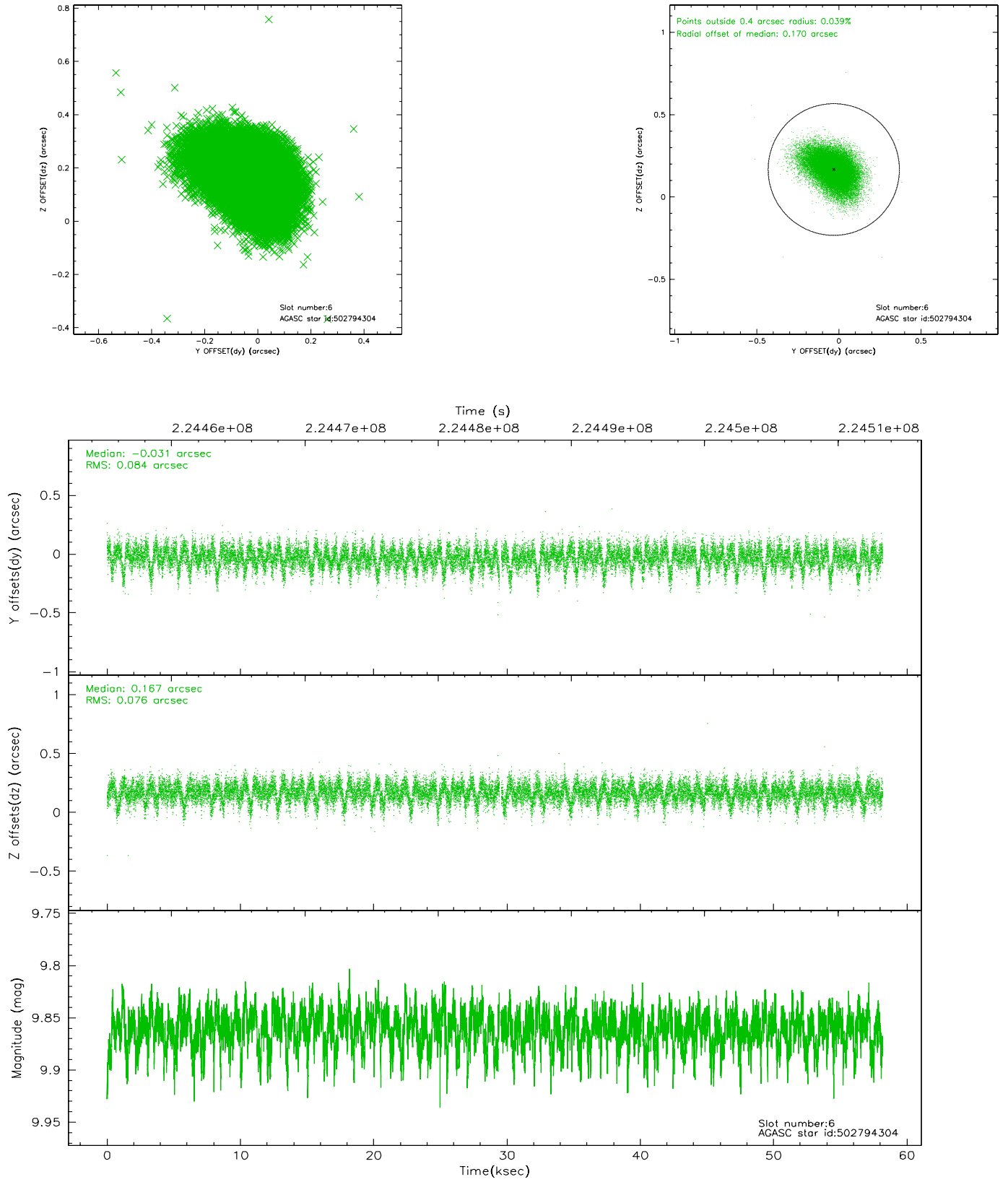
2.4.2 Slot 4



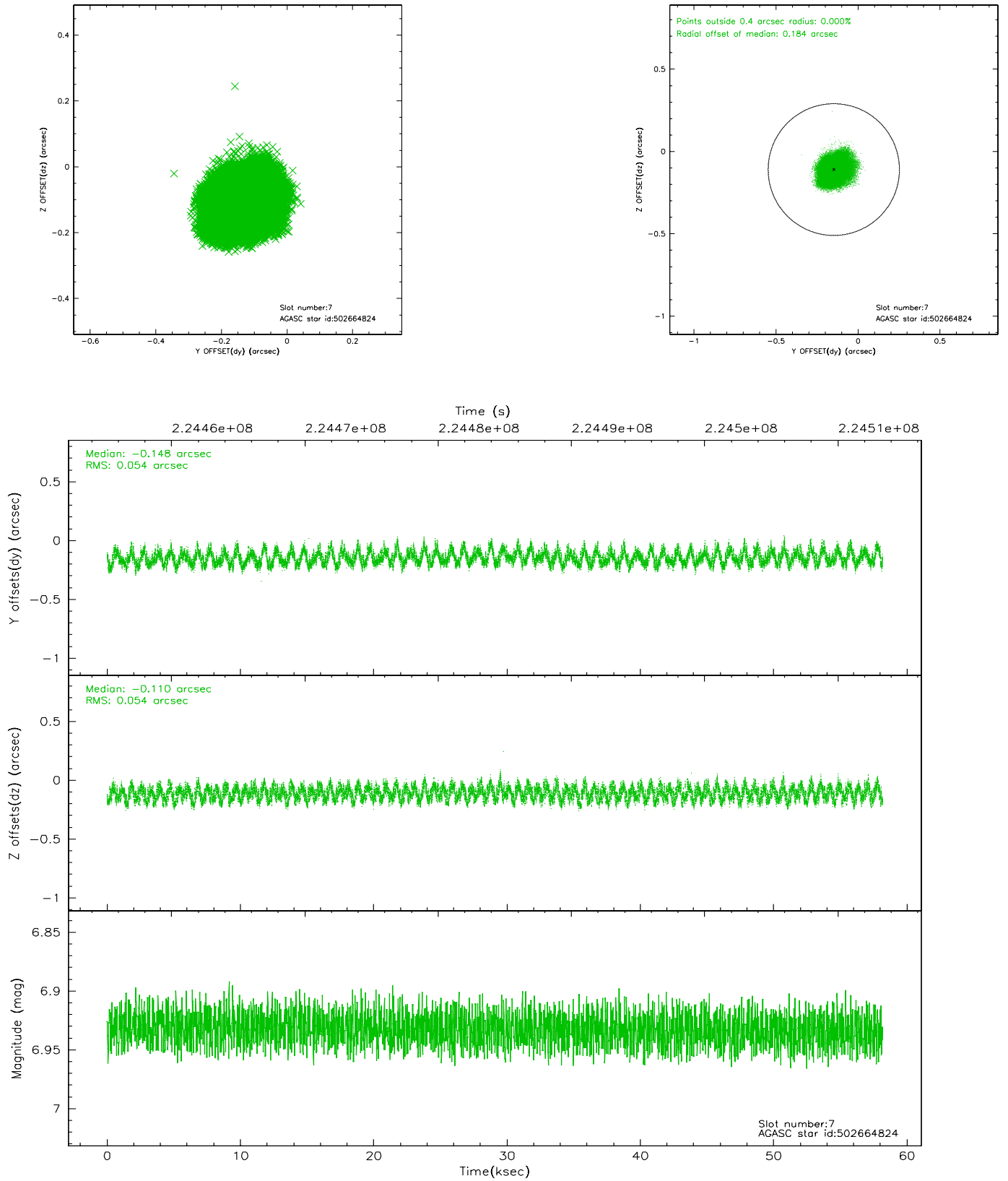
2.4.3 Slot 5



2.4.4 Slot 6

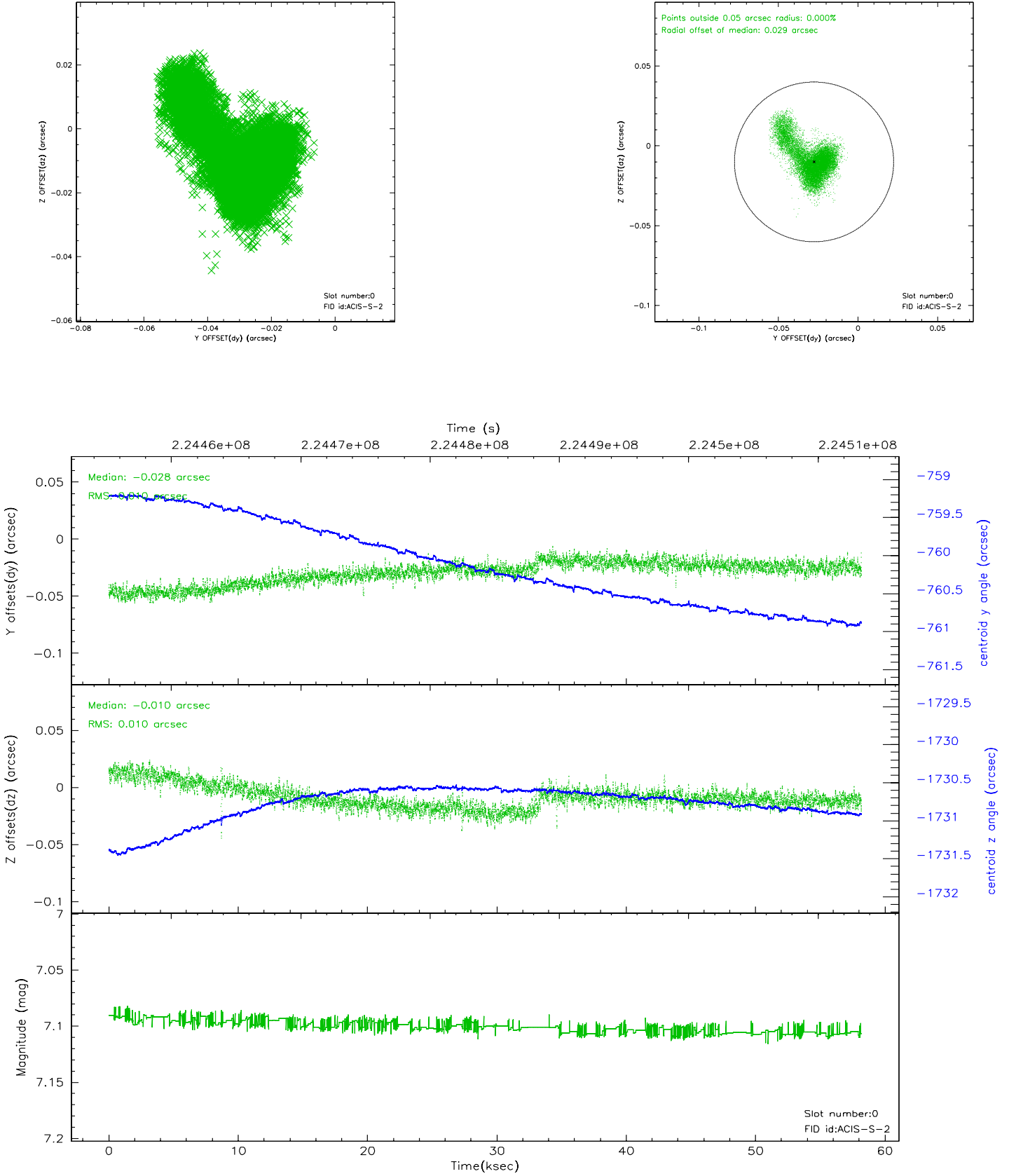


2.4.5 Slot 7

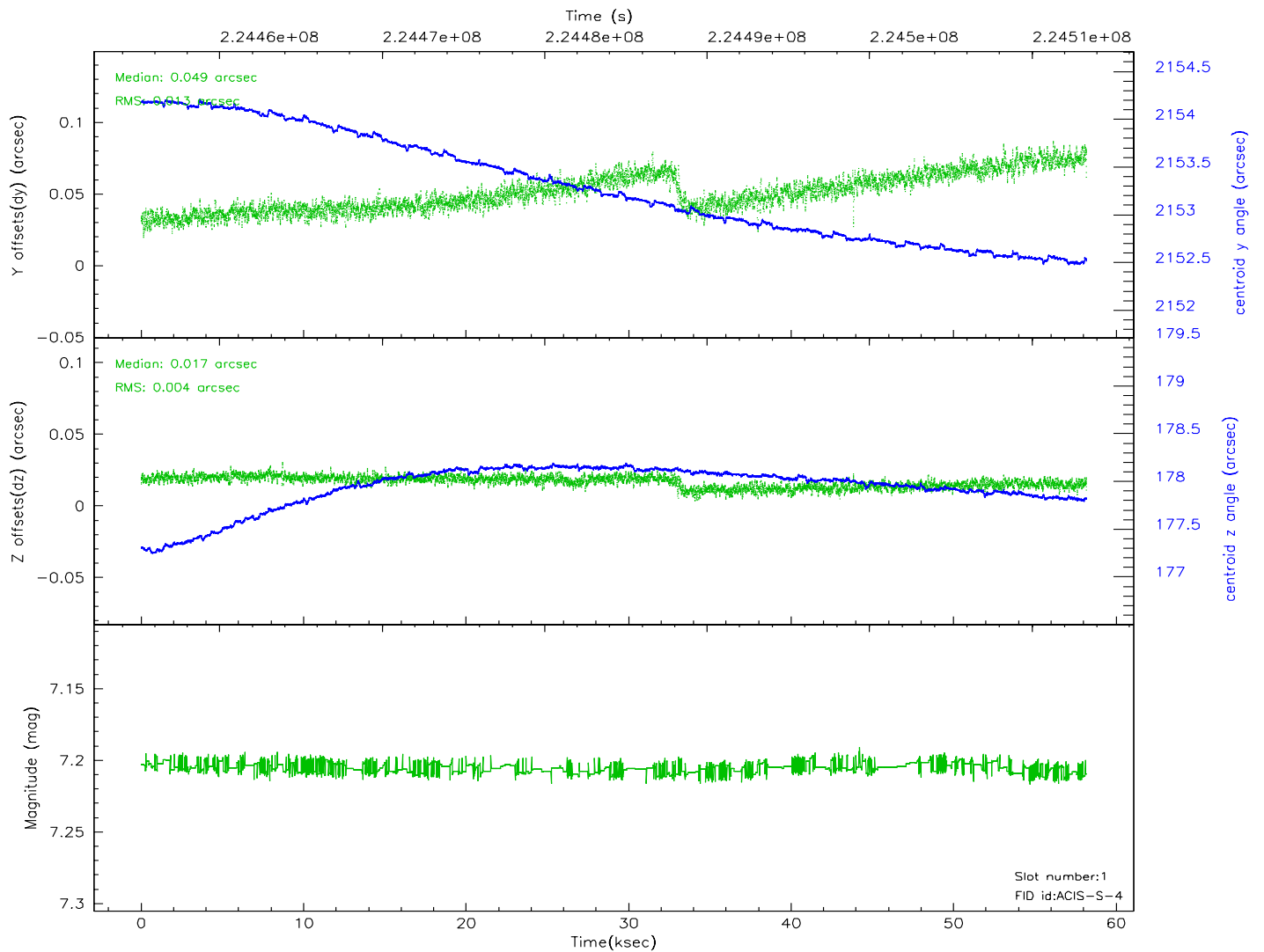
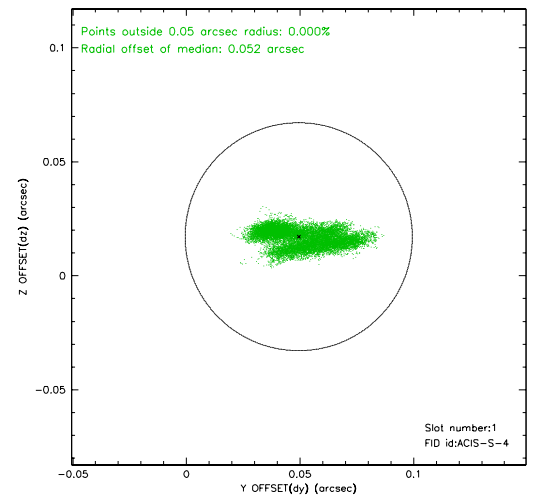
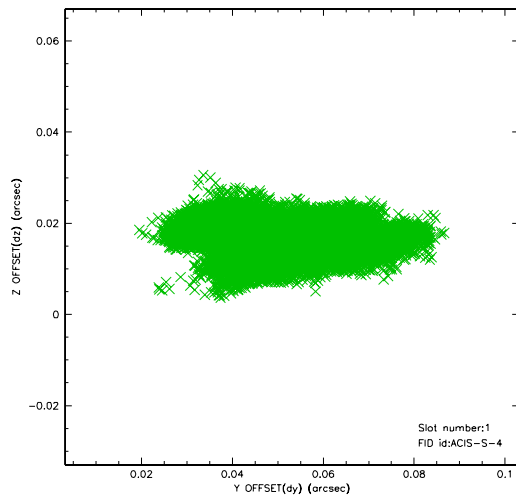


2.5 FID Slots

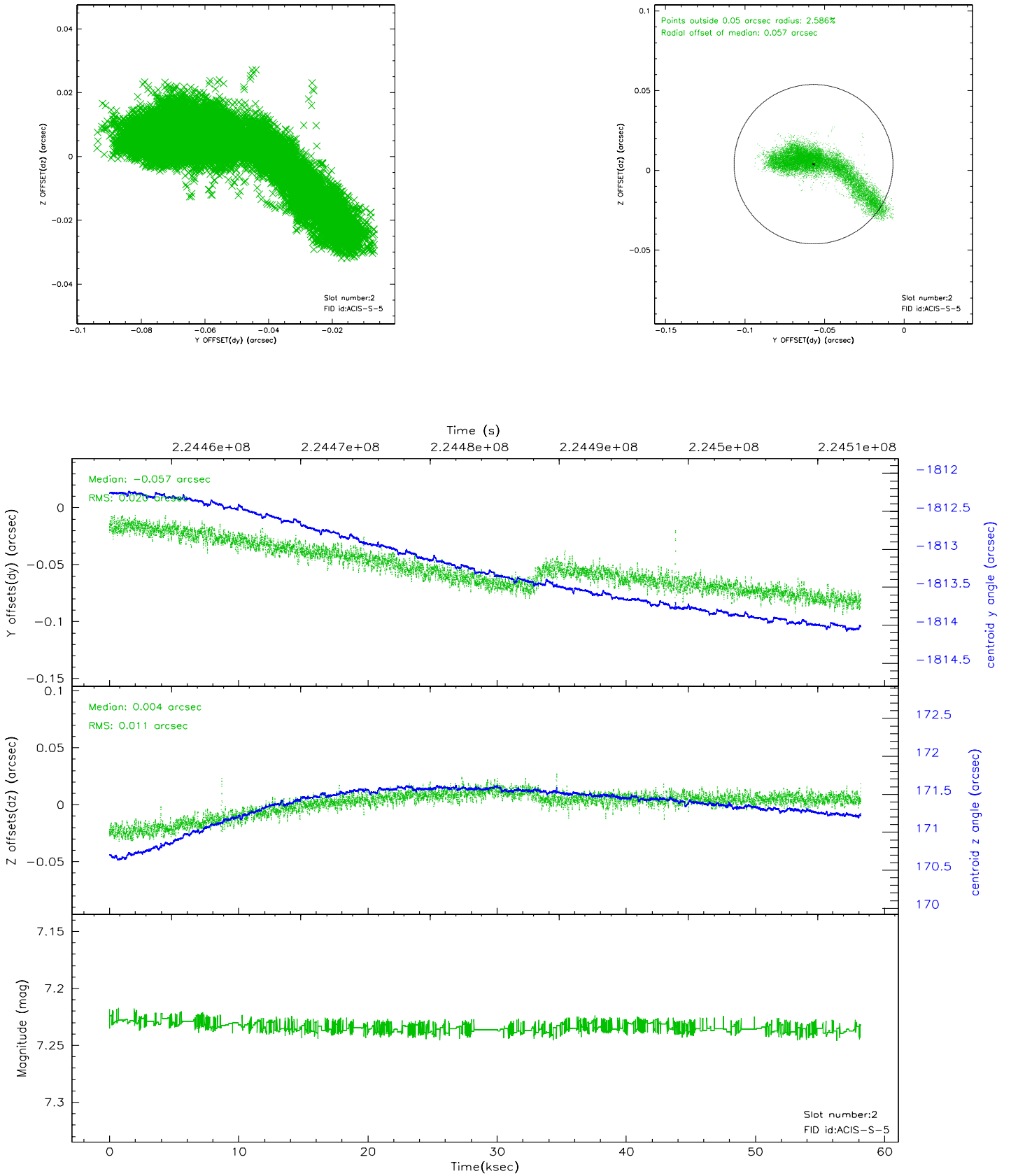
2.5.1 Slot 0



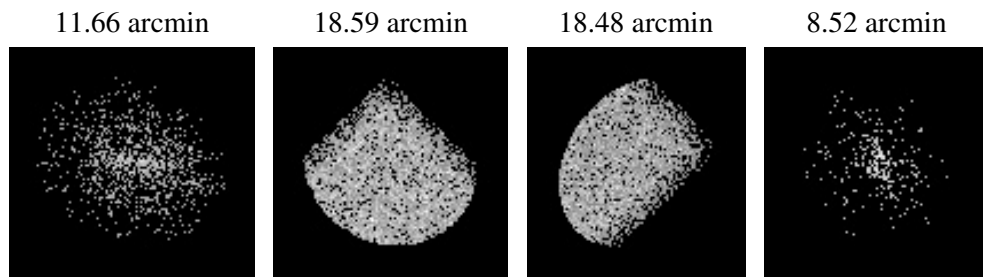
2.5.2 Slot 1



2.5.3 Slot 2



3 Point Sources



A Summary

A.1 Status

V&V Scientist	Beth Sundheim
V&V Date (YYYY-MM-DD)	2006.02.23
V&V Edition	1
V&V Disposition and Status	OK
V&V Charge Time	58.17599

A.2 Comments