

V&V Reference Report

L2 ASCDS Version : 7.6.7.1

Observation 4650 - L2 Version 001
Chandra X-Ray Center

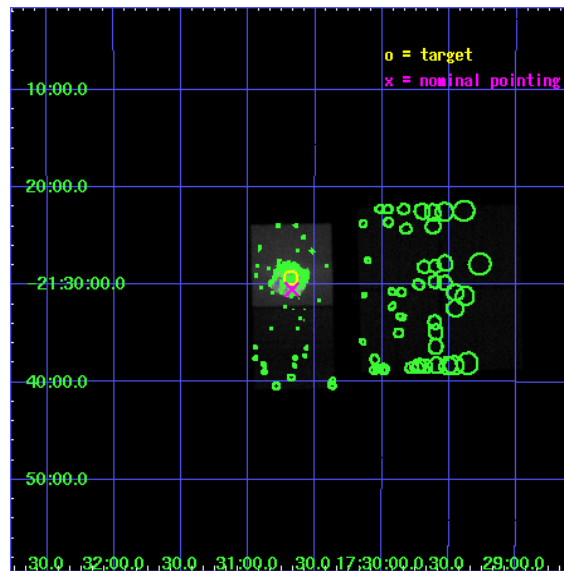
L2 Processing Date : Apr 13 2006

Contents

1	Front	2
2	OBI	3
2.1	OBI	3
2.1.1	Images	3
2.1.2	Bias	3
2.1.3	Parameters	4
2.1.4	Events	4
2.2	Compared Parameters	5
2.3	Aspect	6
2.4	Star Slots	9
2.4.1	Slot 3	9
2.4.2	Slot 4	10
2.4.3	Slot 5	11
2.4.4	Slot 6	12
2.4.5	Slot 7	13
2.5	FID Slots	14
2.5.1	Slot 0	14
2.5.2	Slot 1	15
2.5.3	Slot 2	16
3	Point Sources	17
A	Summary	18
A.1	Status	18
A.2	Comments	18

1 Front

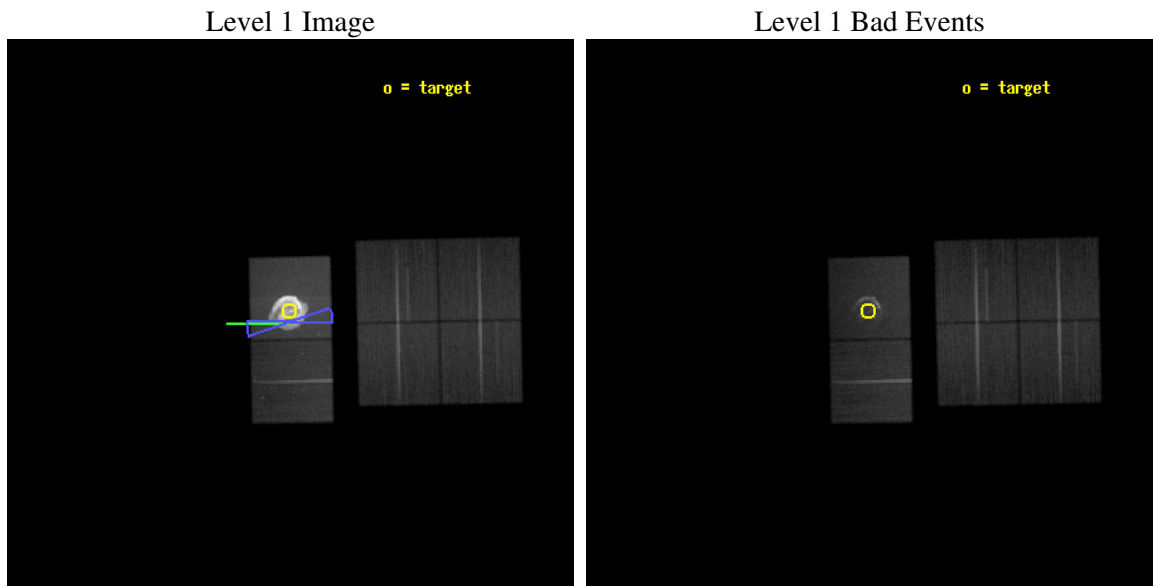
seq_num	500469
obs_id	4650
title	Untangling the Dynamics of Kepler's Supernova Remnant
observer	Dr. Lawrence Rudnick
object	Kepler
dtcycle	0
cycle	P
ra_targ	262.670833
dec_targ	-21.488061
ra_nom	262.66850010573
dec_nom	-21.508679122798
roll_nom	268.77969264593
revision	2
ontime	46764.799825788
livetime	46172.635772012
ontime0	46764.799825788
ontime1	46764.799825788
ontime2	46761.558835596
ontime3	46764.799825788
ontime6	46761.558965117
ontime7	46764.799825788
l2events	2389862



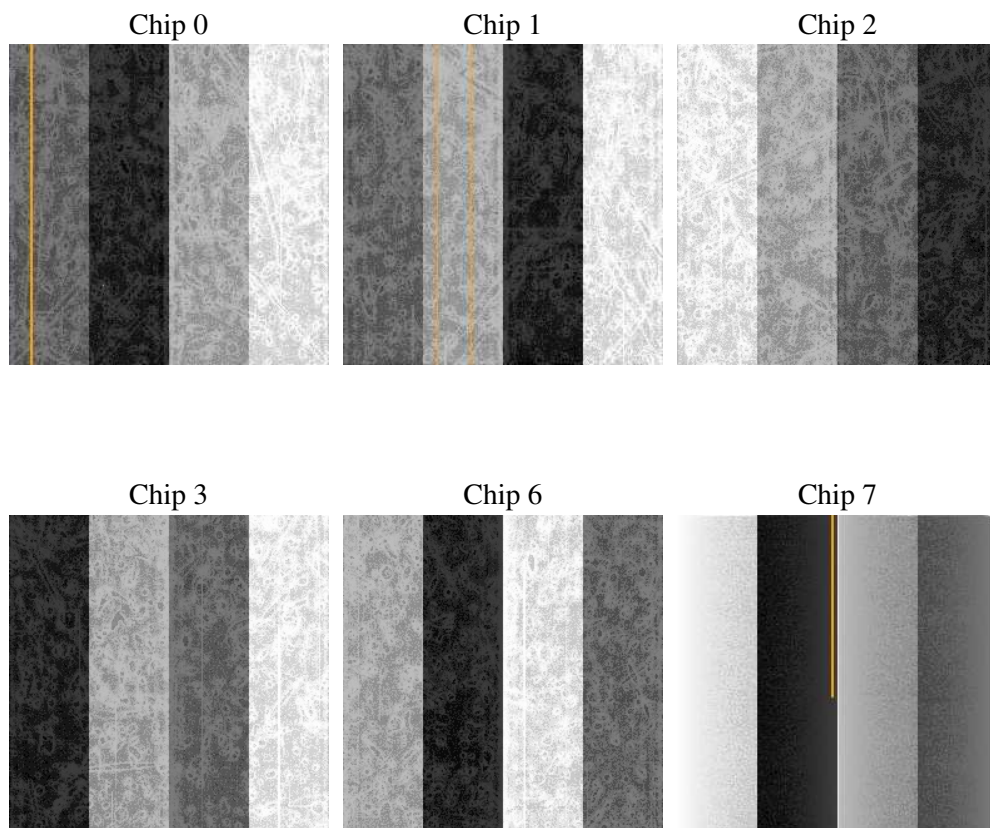
2 OBI

2.1 OBI

2.1.1 Images



2.1.2 Bias



2.1.3 Parameters

obi_num	2
ascdsver	7.6.7.1
caldbver	3.2.1
date	2006-04-13T10:00:01
revision	2

sched_exp_time	46809.518000
ontime	46770.870156139
ontime0	46770.870156139
ontime1	46770.870156139
ontime2	46767.629165947
ontime3	46770.870156139
ontime6	46767.629295468
ontime7	46770.870156139
l1events	4381466

2.1.4 Events

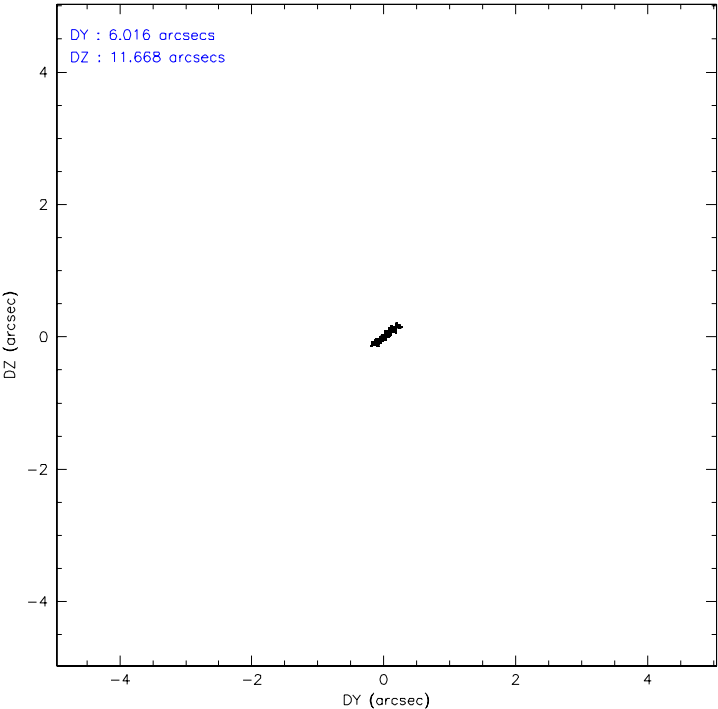
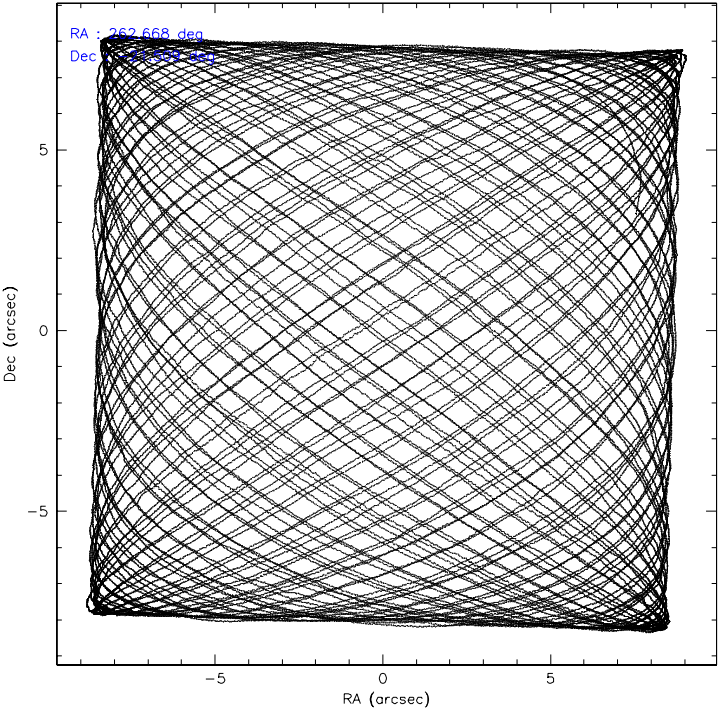
	ccd 0	ccd 1	ccd 2	ccd 3	ccd 6	ccd 7
level 1 events	356742	336254	373130	366803	396332	2552205
rejected events	310886	289439	325069	319540	333005	337633
rejected %	87%	86%	87%	87%	84%	13%

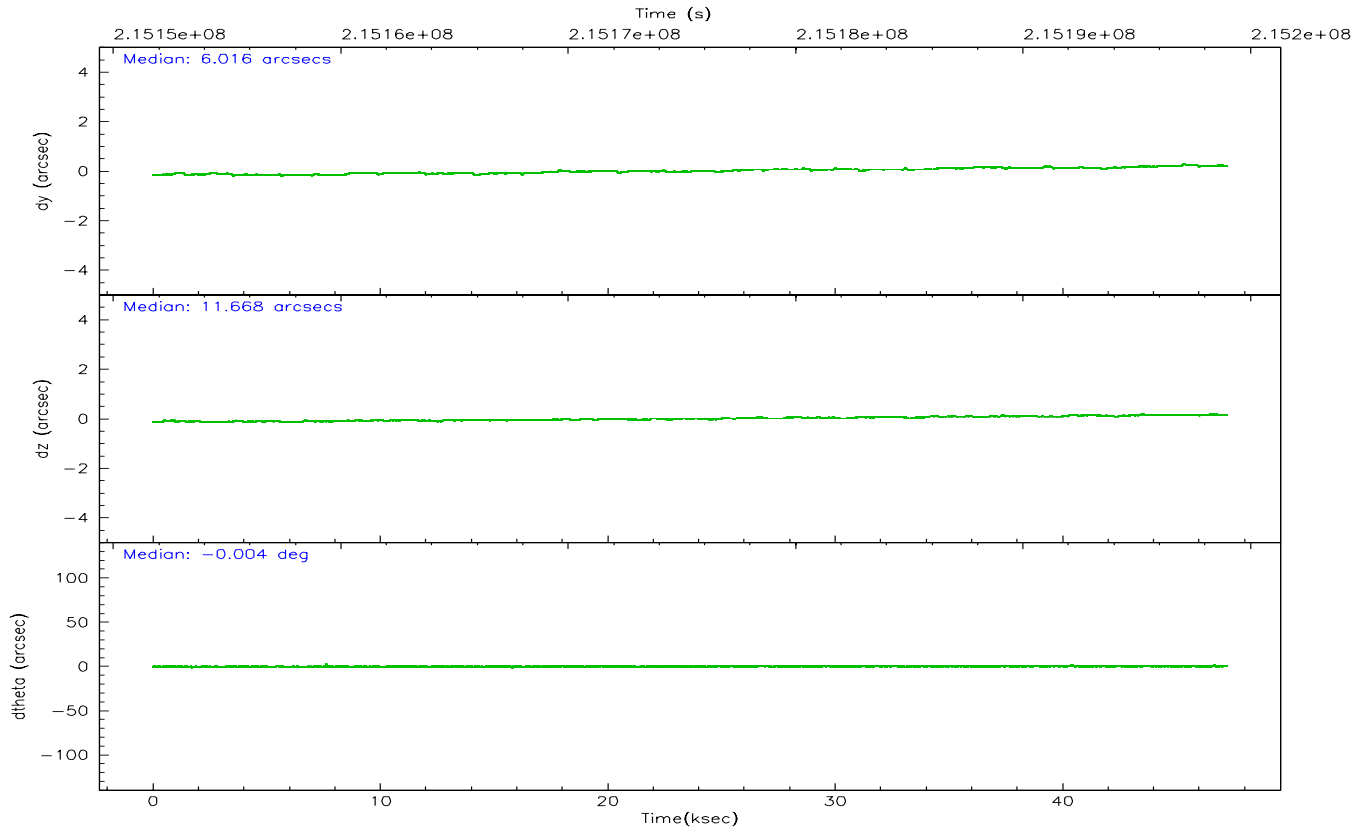
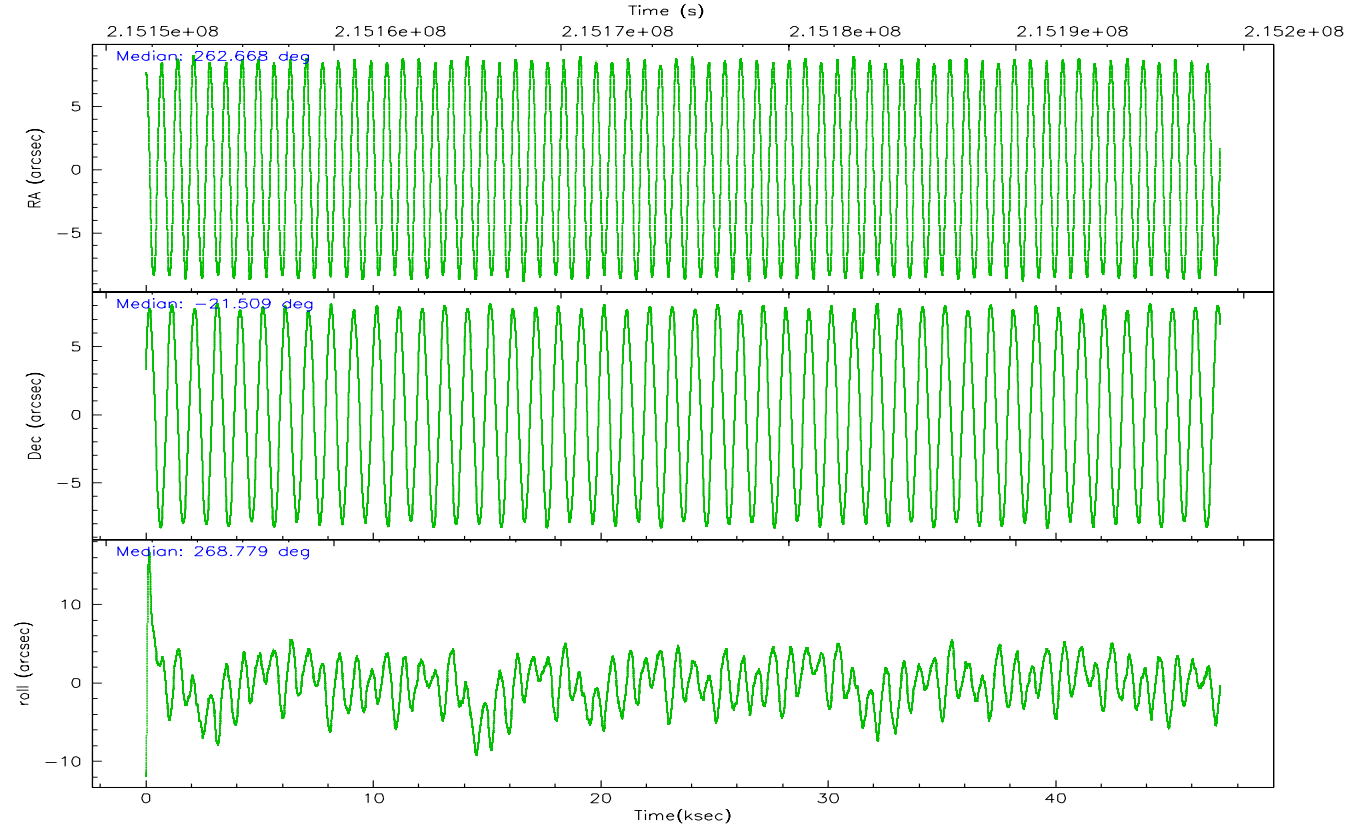
	ccd 0	ccd 1	ccd 2	ccd 3	ccd 6	ccd 7
grade 0 events	20004	18983	23553	22836	34451	626966
	5%	5%	6%	6%	8%	24%
grade 1 events	225	164	273	224	255	4245
	0%	0%	0%	0%	0%	0%
grade 2 events	9699	10051	9271	8627	10700	632420
	2%	2%	2%	2%	2%	24%
grade 3 events	4463	4504	4077	4174	4755	244627
	1%	1%	1%	1%	1%	9%
grade 4 events	3993	4434	4176	4223	4495	240025
	1%	1%	1%	1%	1%	9%
grade 5 events	15235	15391	13925	16188	17091	51598
	4%	4%	3%	4%	4%	2%
grade 6 events	7702	8858	6991	7409	8934	470832
	2%	2%	1%	2%	2%	18%
grade 7 events	295421	273869	310864	303122	315651	281492
	82%	81%	83%	82%	79%	11%

2.2 Compared Parameters

Parameter	Planned	Actual	Parameter	Planned	Actual
Instrument	ACIS	ACIS	Obspar format version number	6	6
Detector	ACIS-012367	ACIS-012367	Obspar file type	PREDICTED	ACTUAL
Grating	NONE	NONE	Obspar update status	NONE	UPDATED
Data mode	FAINT	FAINT	On-chip summing requested	N	N
Observation mode	POINTING	POINTING	Subarray requested	NONE	NONE
Pointing RA	262.654064	262.6685001057303	Alternating exposures requested	N	N
Pointing Dec	-21.485018	-21.50867912279779	Primary exposure time	0.000000	3.2
Pointing Roll	268.617776	268.7796926459333			
Roll angle	261.124000	261.124000			
Roll tolerance	10.000000	10.000000			
Roll constraint allows 180D rotation	Y	Y			
SIM focus pos (mm)	-0.684267	-0.6828225247311905			
SIM defocus (mm)	0	0.001444936568705701			
SIM translation stage pos (mm)	-190.132523	-190.1425803651734			
SIM translation stage offset (mm)	0	0.01005778216563158			
Observation start time	215152173.184000	215151090.66506			
Observation start date	2004-10-26T04:28:29	2004-10-26T04:11:30			
Observation end time	215198982.184000	215199210.31721			
Observation end date	2004-10-26T17:28:38	2004-10-26T17:33:30			
Read mode	TIMED	TIMED			

2.3 Aspect



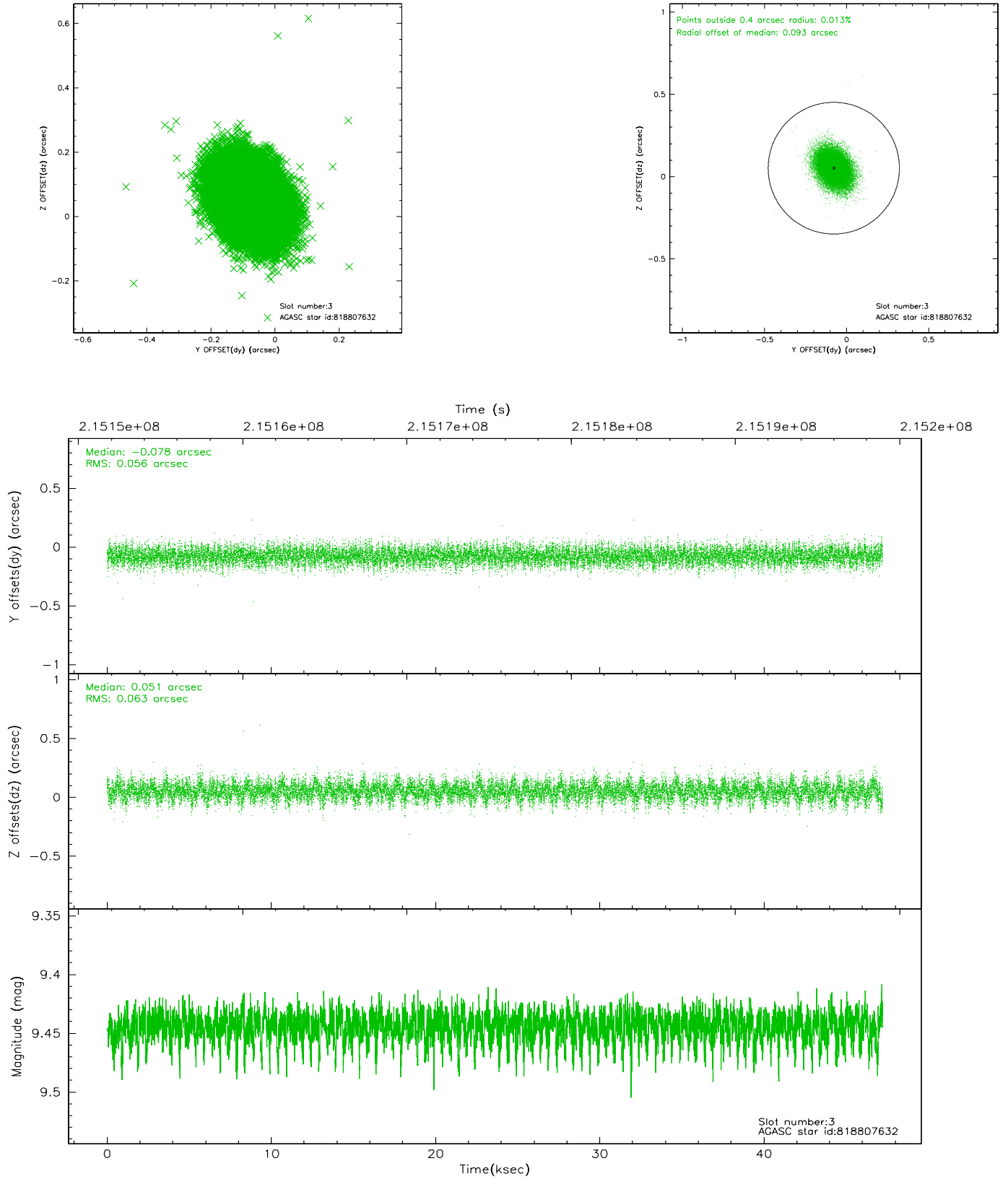


Slot Statistics

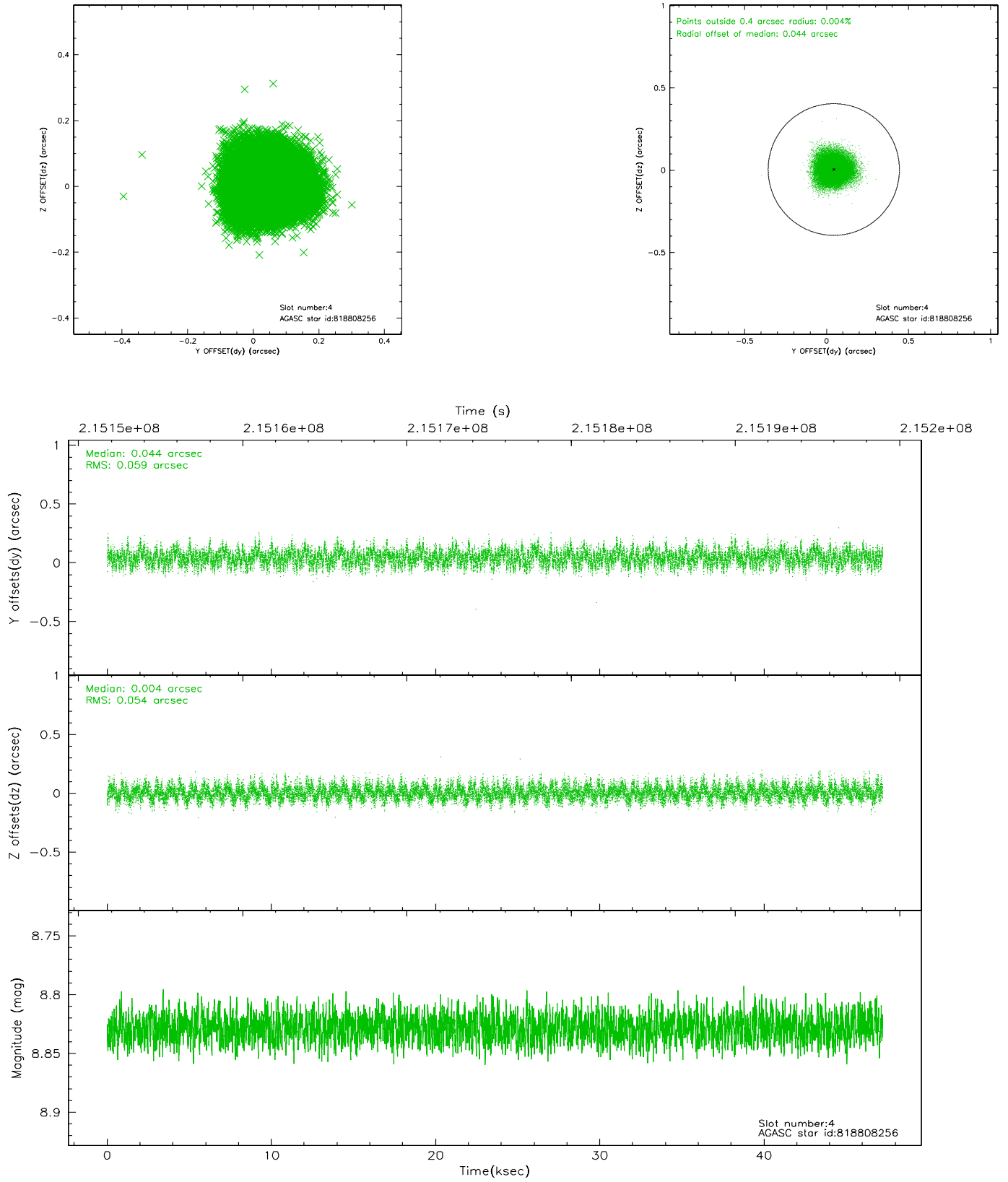
slot	status	id	mag	n_pts	med_dy	med_dz	dr1	dr2	ra	dec	mean_y	mean_z
0	FID	ACIS-S-2	7.10	11520	-0.037	-0.003	0.008	0.013	0.000000	0.000000	-758.79	-1732.92
1	FID	ACIS-S-4	7.20	11521	0.030	0.019	0.005	0.010	0.000000	0.000000	2154.56	175.59
2	FID	ACIS-S-5	7.23	11521	-0.024	-0.007	0.007	0.012	0.000000	0.000000	-1811.63	169.23
3	GUIDE	818807632	9.44	23027	-0.078	0.051	0.089	0.146	262.882186	-21.522238	116.27	767.09
4	GUIDE	818808256	8.83	23033	0.044	0.004	0.086	0.136	263.255476	-21.831270	1202.84	2039.76
5	GUIDE	818808880	9.56	22996	-0.099	-0.008	0.092	0.152	262.860845	-20.882902	-2182.92	642.93
6	GUIDE	818809592	9.18	23021	0.169	-0.133	0.094	0.150	262.650746	-21.954180	1689.10	29.62
7	GUIDE	818810616	7.85	23034	-0.031	0.085	0.052	0.084	263.165516	-21.873468	1359.93	1742.16

2.4 Star Slots

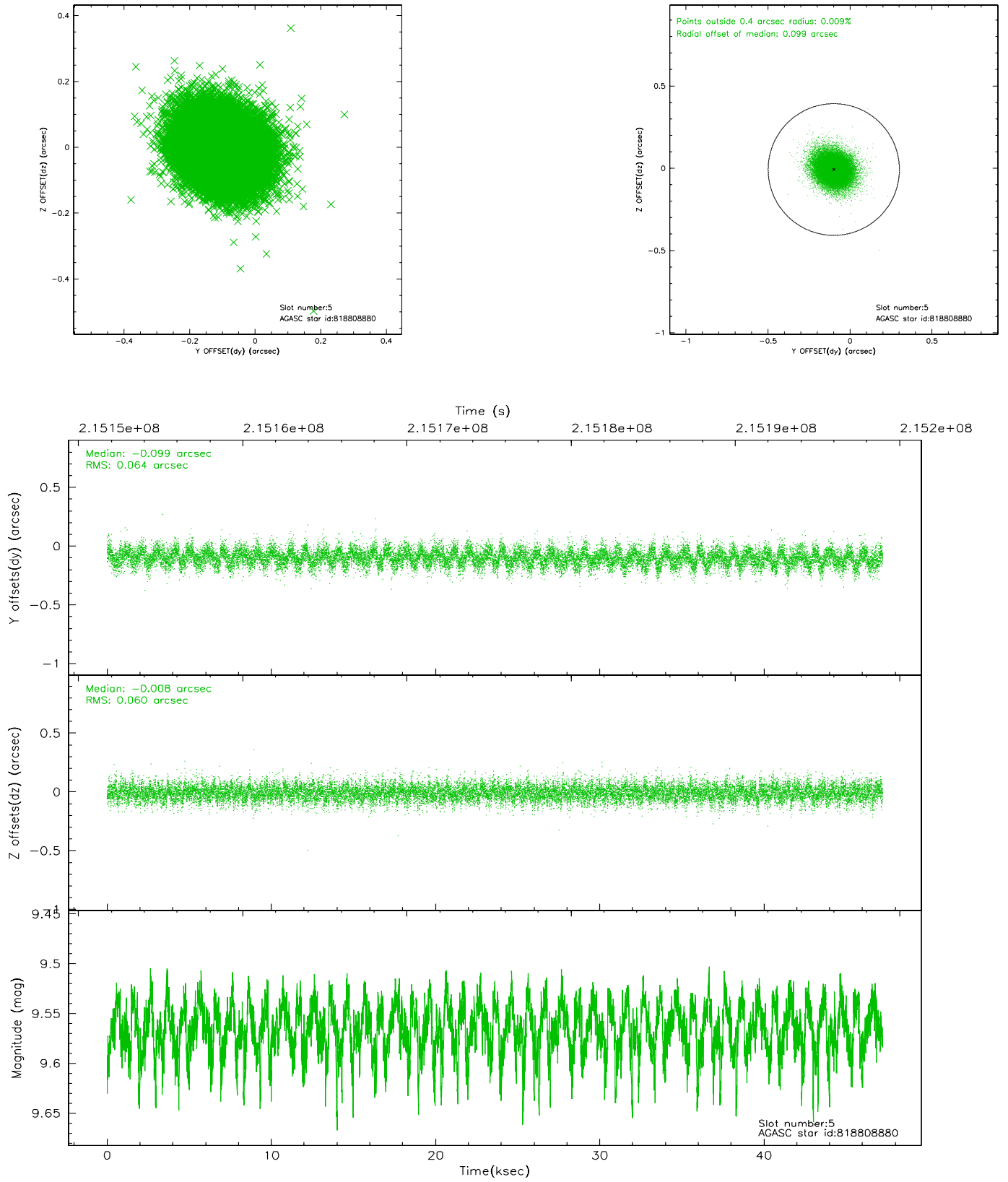
2.4.1 Slot 3



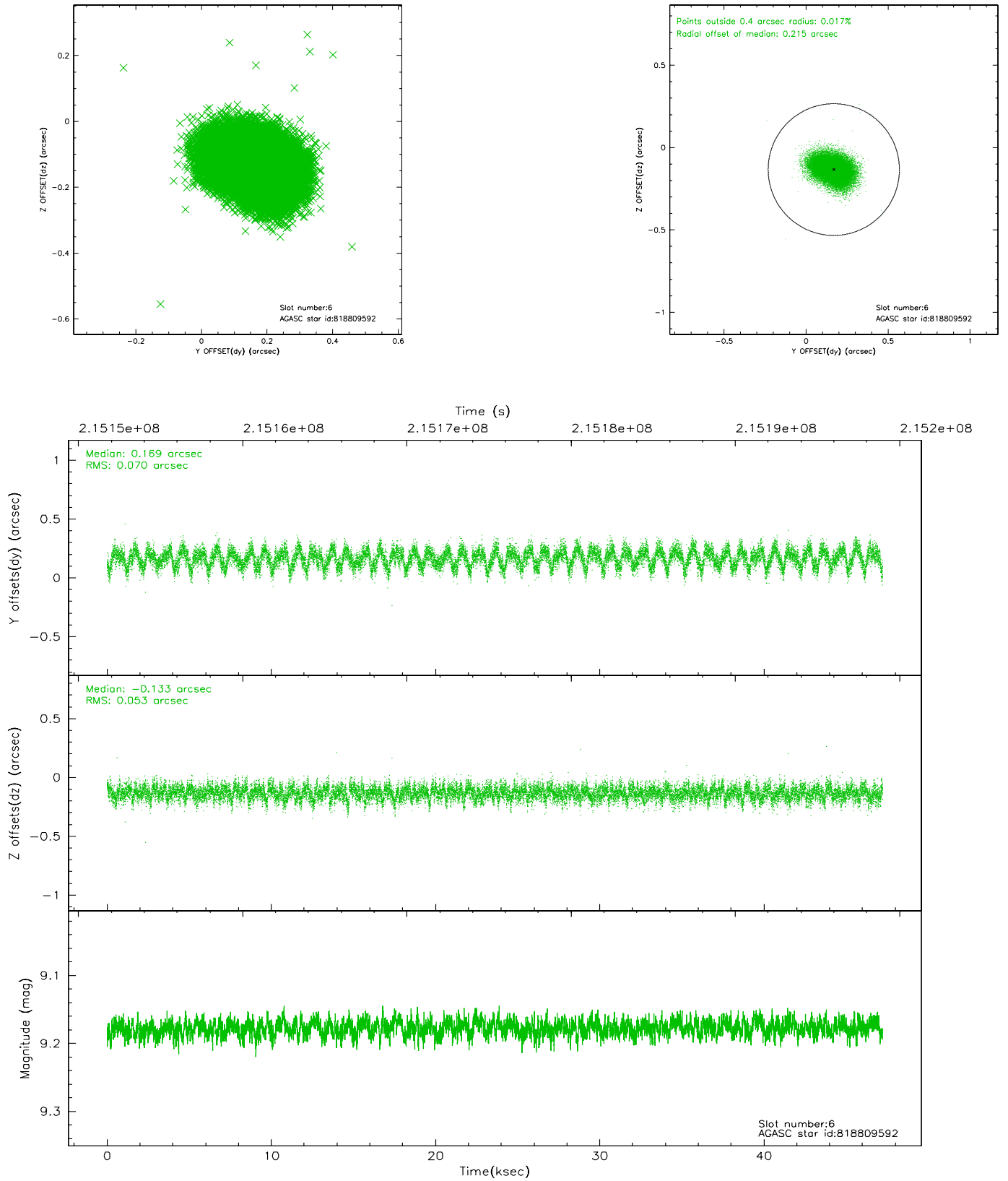
2.4.2 Slot 4



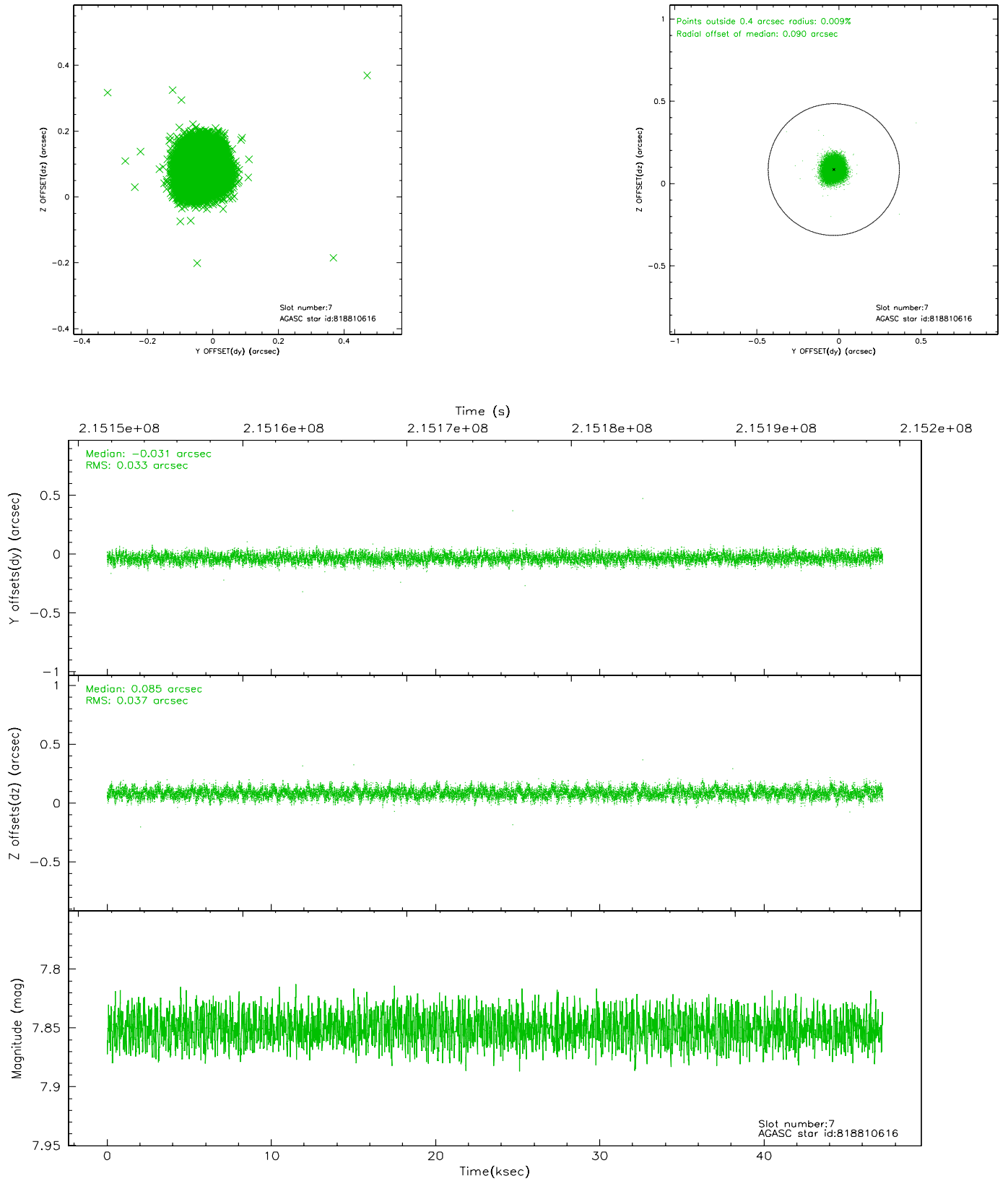
2.4.3 Slot 5



2.4.4 Slot 6

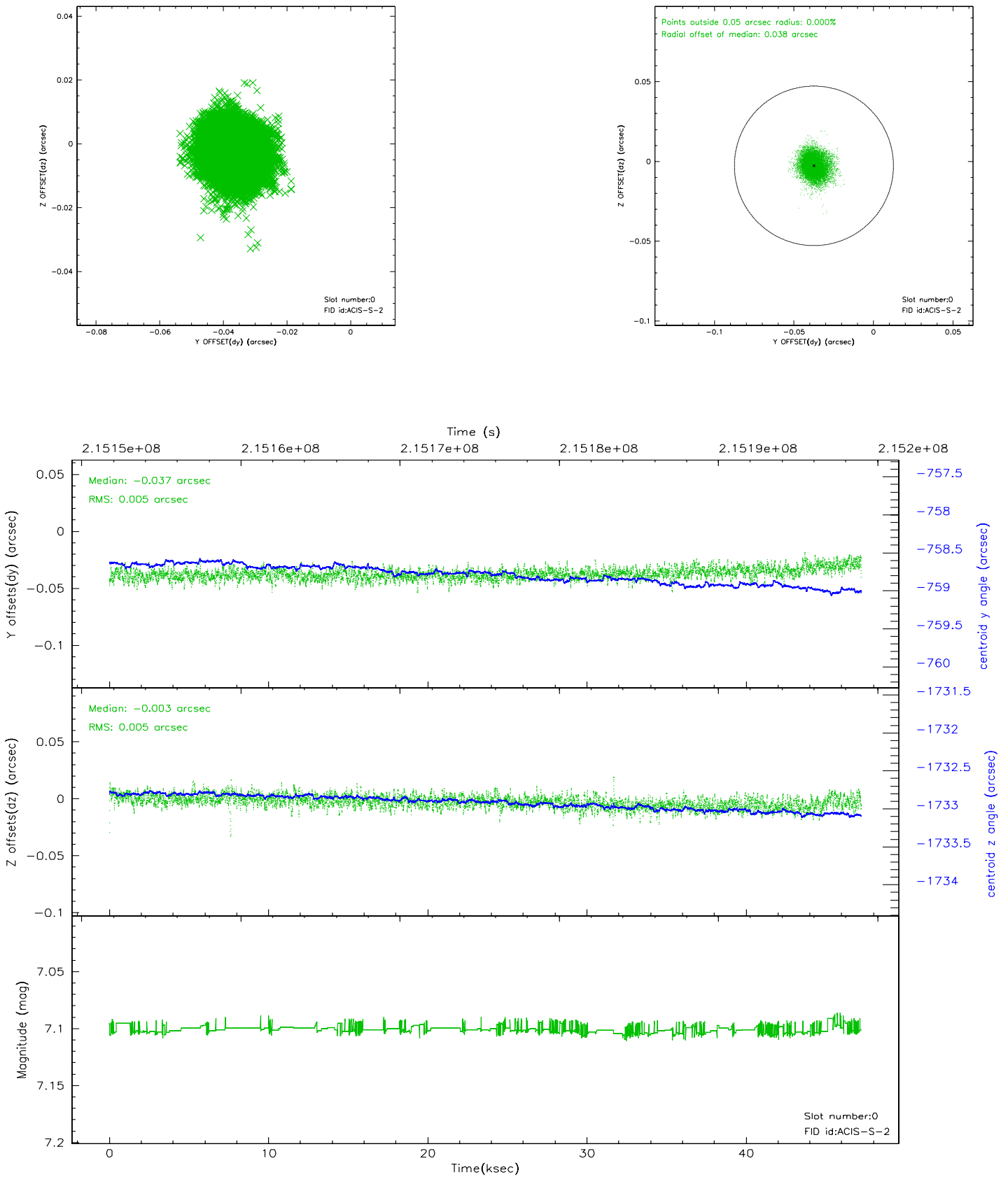


2.4.5 Slot 7

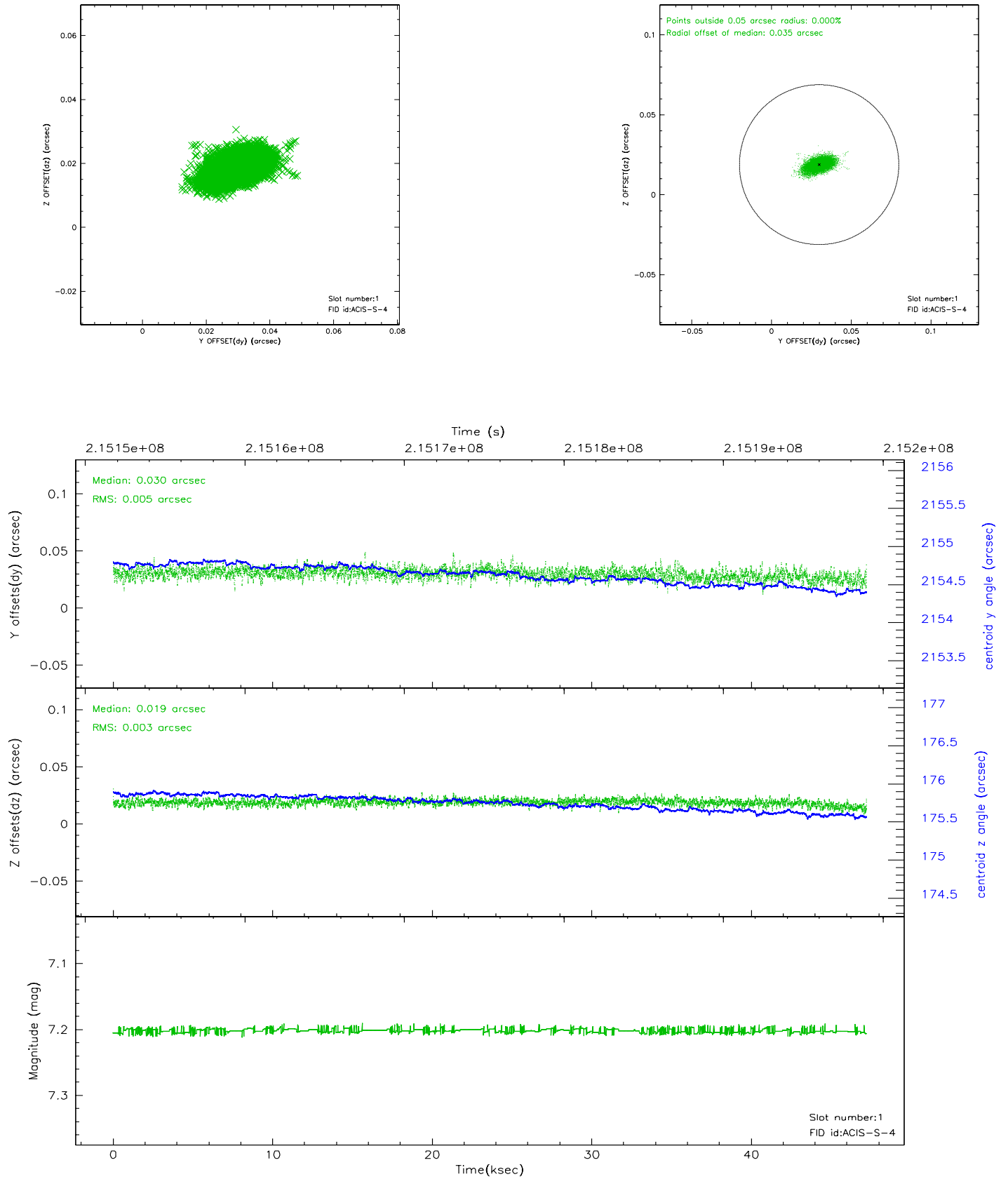


2.5 FID Slots

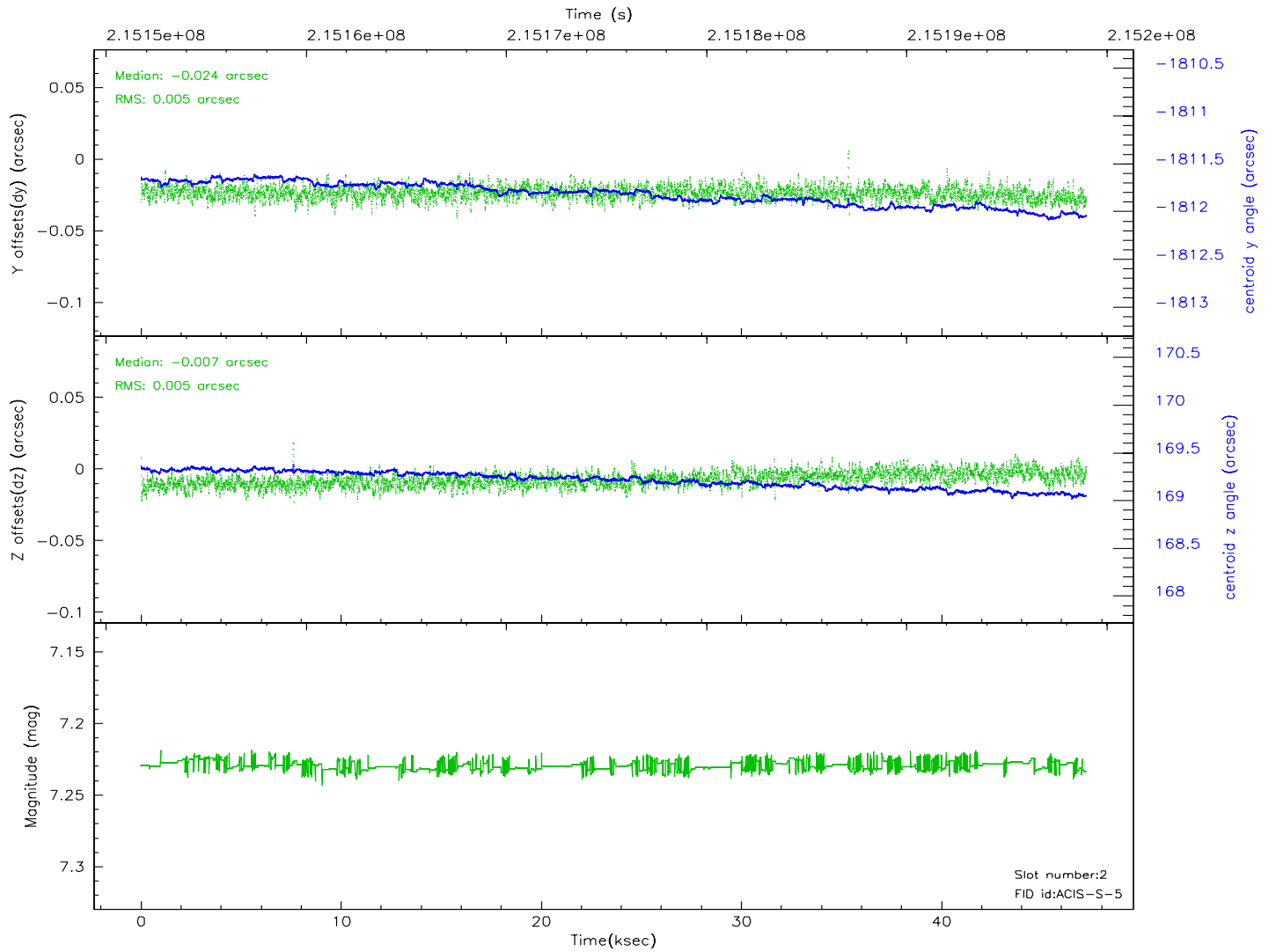
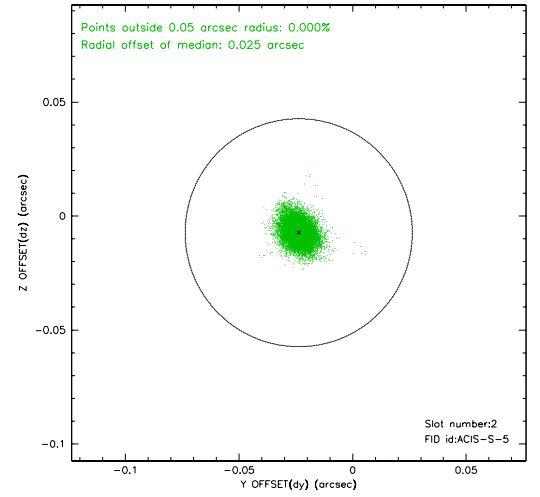
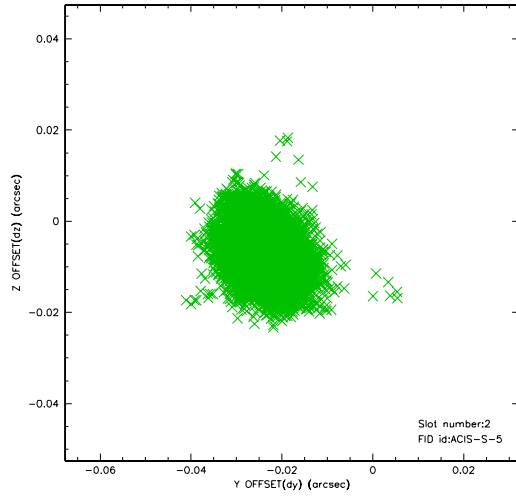
2.5.1 Slot 0



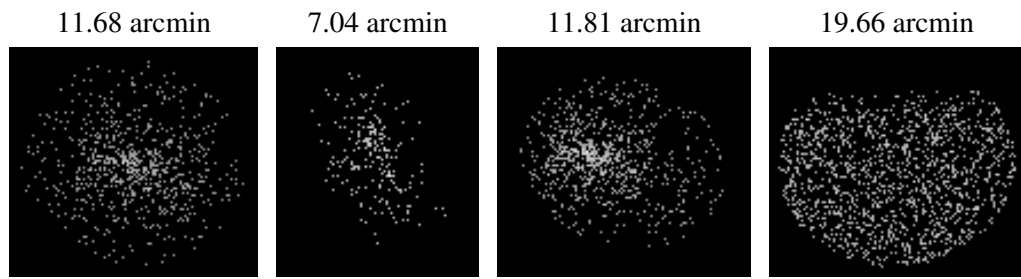
2.5.2 Slot 1



2.5.3 Slot 2



3 Point Sources



A Summary

A.1 Status

V&V Scientist	Jen Lauer
V&V Date (YYYY-MM-DD)	2006.04.13
V&V Edition	1
V&V Disposition and Status	OK
V&V Charge Time	46.764

A.2 Comments

Roll constraint met.