

V&V Reference Report

L2 ASCDS Version : 7.6.7.1

Observation 4560 - L2 Version 001
Chandra X-Ray Center

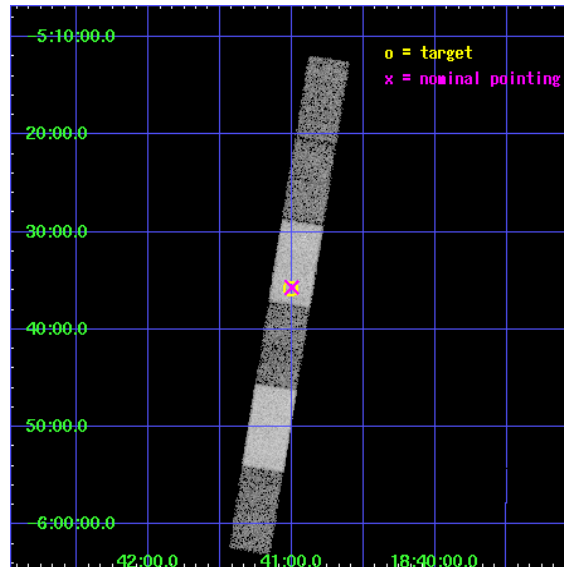
L2 Processing Date : Apr 15 2006

Contents

1	Front	2
2	OBI	3
2.1	OBI	3
2.1.1	Images	3
2.1.2	Bias	3
2.1.3	Parameters	4
2.1.4	Events	4
2.2	Compared Parameters	5
2.3	Aspect	6
2.4	Star Slots	9
2.4.1	Slot 3	9
2.4.2	Slot 4	10
2.4.3	Slot 5	11
2.4.4	Slot 6	12
2.4.5	Slot 7	13
2.5	FID Slots	14
2.5.1	Slot 0	14
2.5.2	Slot 1	15
2.5.3	Slot 2	16
3	Gratings	17
3.1	HEG Arm	17
3.2	MEG Arm	19
A	Summary	21
A.1	Status	21
A.2	Comments	21

1 Front

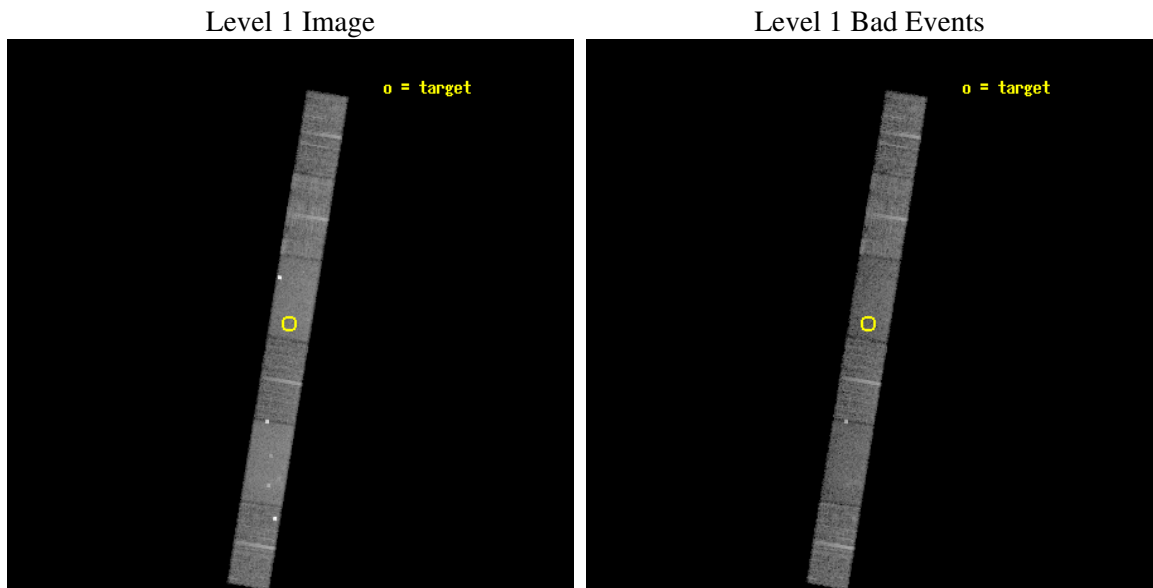
seq_num	400343
obs_id	4560
title	Chandra follow-up of very hard transient sources detected with INTEGRAL
observer	Dr. Sergio Campana
object	IGR J18410-0535
dtcycle	0
cycle	P
ra_targ	280.251792
dec_targ	-5.59625
ra_nom	280.24988980941
dec_nom	-5.5950469633161
roll_nom	279.29549654167
revision	2
ontime	10169.399928689
livetime	9929.6856354658
ontime4	10169.399928689
ontime5	10169.399928689
ontime6	10169.399928689
ontime7	10169.399928689
ontime8	10169.399928689
ontime9	10169.399928689
l2events	66097



2 OBI

2.1 OBI

2.1.1 Images

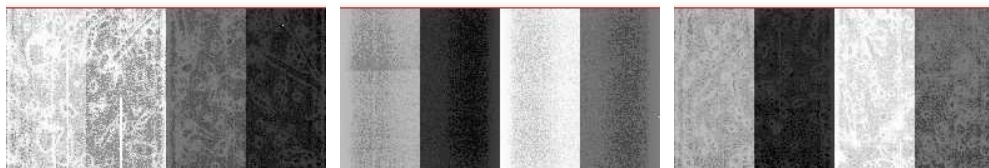


2.1.2 Bias

Chip 4

Chip 5

Chip 6



Chip 7

Chip 8

Chip 9



2.1.3 Parameters

obi_num	0
ascdsver	7.6.7.1
caldbver	3.2.1
date	2006-04-15T08:36:03
revision	2

sched_exp_time	10000.000000
ontime	10172.774295211
ontime4	10172.774275303
ontime5	10172.774275303
ontime6	10172.774275303
ontime7	10172.774295211
ontime8	10172.774275303
ontime9	10172.774275303
l1events	320584

2.1.4 Events

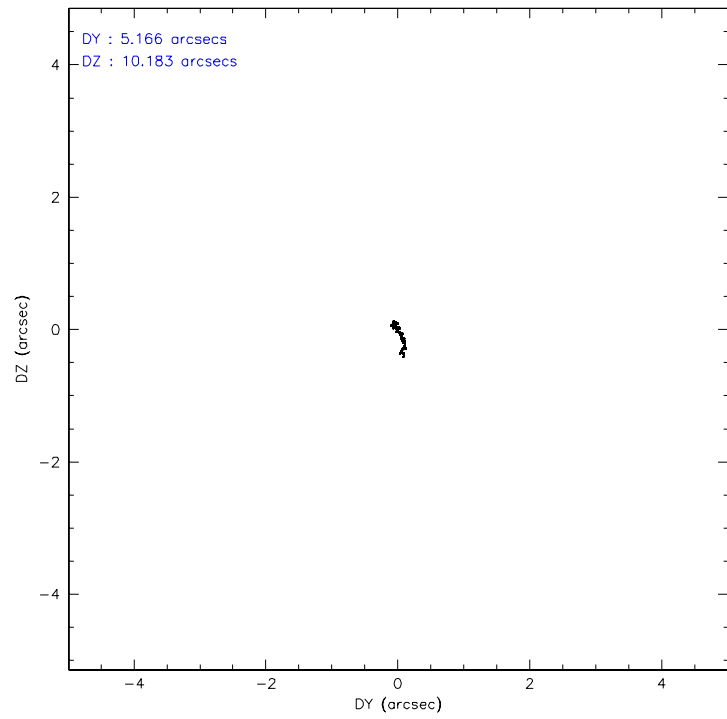
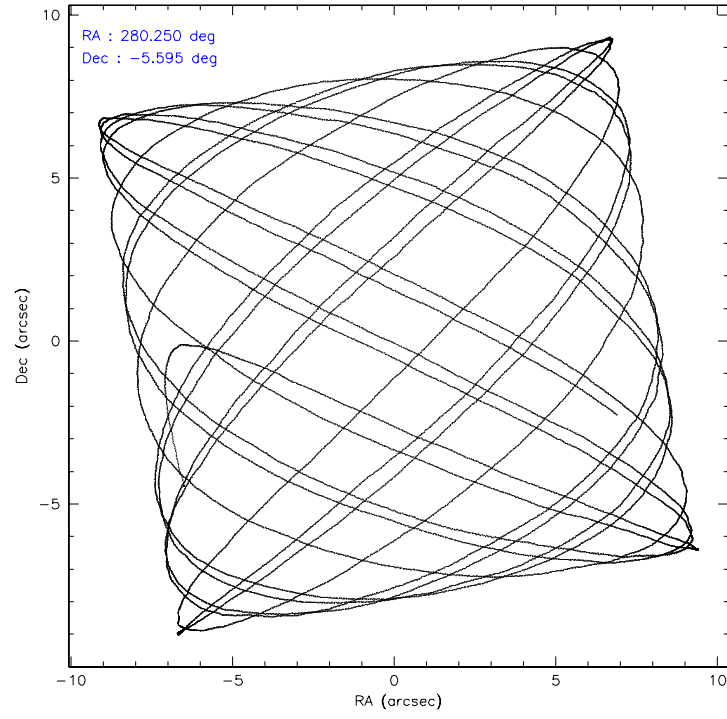
	ccd 4	ccd 5	ccd 6	ccd 7	ccd 8	ccd 9
level 1 events	53489	64015	43120	60600	56678	42682
rejected events	42167	34800	37813	32516	44489	37383
rejected %	78%	54%	87%	53%	78%	87%

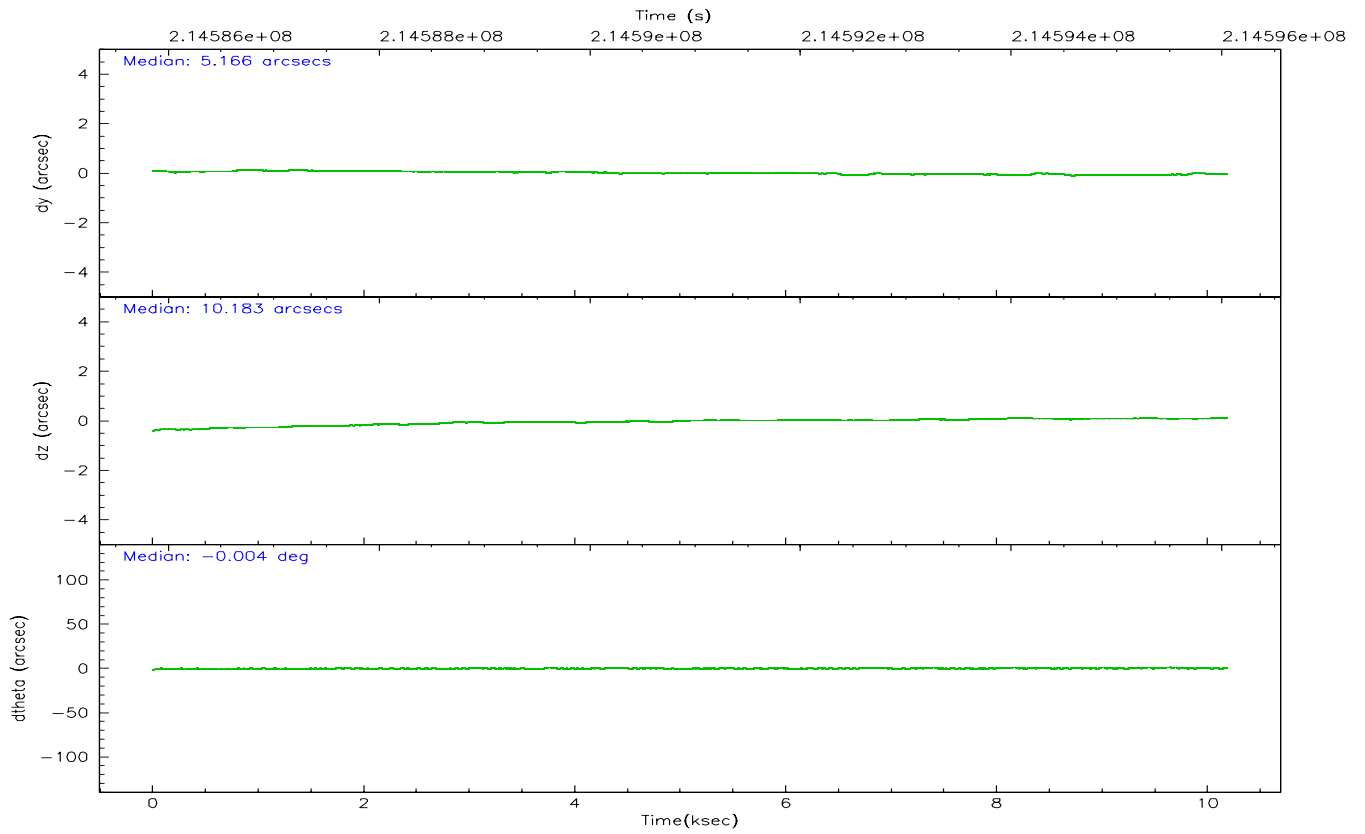
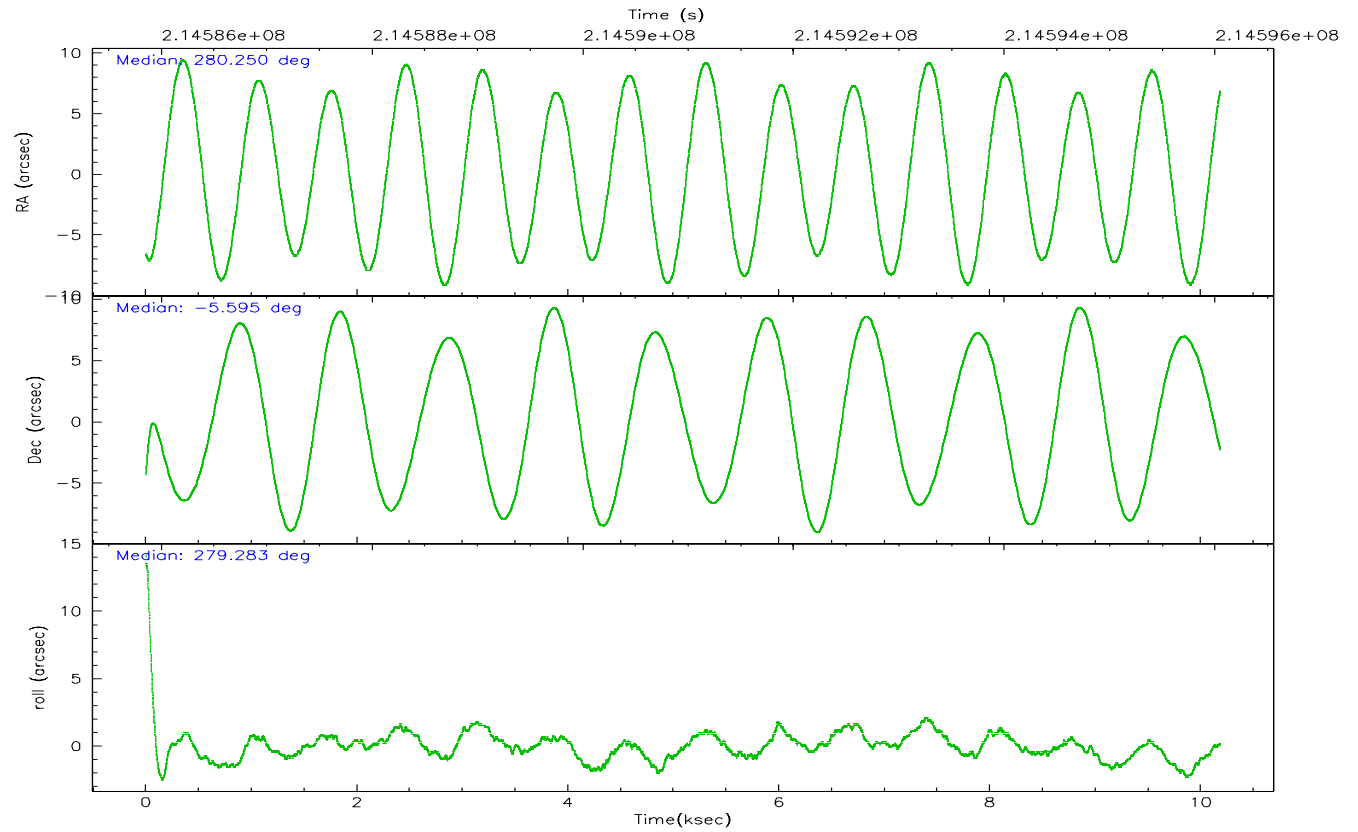
	ccd 4	ccd 5	ccd 6	ccd 7	ccd 8	ccd 9
grade 0 events	7908	2506	2098	7235	3571	2112
	14%	3%	4%	11%	6%	4%
grade 1 events	40	339	18	39	20	22
	0%	0%	0%	0%	0%	0%
grade 2 events	1259	8588	1019	5152	2579	999
	2%	13%	2%	8%	4%	2%
grade 3 events	599	1095	620	1612	1410	630
	1%	1%	1%	2%	2%	1%
grade 4 events	646	1020	591	1516	1333	592
	1%	1%	1%	2%	2%	1%
grade 5 events	1686	3799	1768	4111	2391	1948
	3%	5%	4%	6%	4%	4%
grade 6 events	913	16023	984	12576	3297	967
	1%	25%	2%	20%	5%	2%
grade 7 events	40438	30645	36022	28359	42077	35412
	75%	47%	83%	46%	74%	82%

2.2 Compared Parameters

Parameter	Planned	Actual	Parameter	Planned	Actual
Instrument	ACIS	ACIS	Obspar format version number	6	6
Detector	ACIS-456789	ACIS-456789	Obspar file type	PREDICTED	ACTUAL
Grating	HETG	HETG	Obspar update status	NONE	UPDATED
Data mode	FAINT	FAINT	On-chip summing requested	N	N
Observation mode	POINTING	POINTING	Subarray requested	CUSTOM	1/2
Pointing RA	280.232289	280.2498898094124	Subarray start row	1	1
Pointing Dec	-5.574228	-5.595046963316094	Subarray row count	512	512
Pointing Roll	279.137143	279.2954965416735	Alternating exposures requested	N	N
SIM focus pos (mm)	-0.684267	-0.6828225247311905	Primary exposure time	0.000000	1.7
SIM defocus (mm)	0	0.001444936568705701			
SIM translation stage pos (mm)	-183.992523	-183.9875365069546			
SIM translation stage offset (mm)	-6.14	-6.144986076053243			
Observation start time	214586042.184000	214585053.35221			
Observation start date	2004-10-19T15:12:58	2004-10-19T14:57:33			
Observation end time	214596042.184000	214597422.54026			
Observation end date	2004-10-19T17:59:38	2004-10-19T18:23:42			
Read mode	TIMED	TIMED			

2.3 Aspect



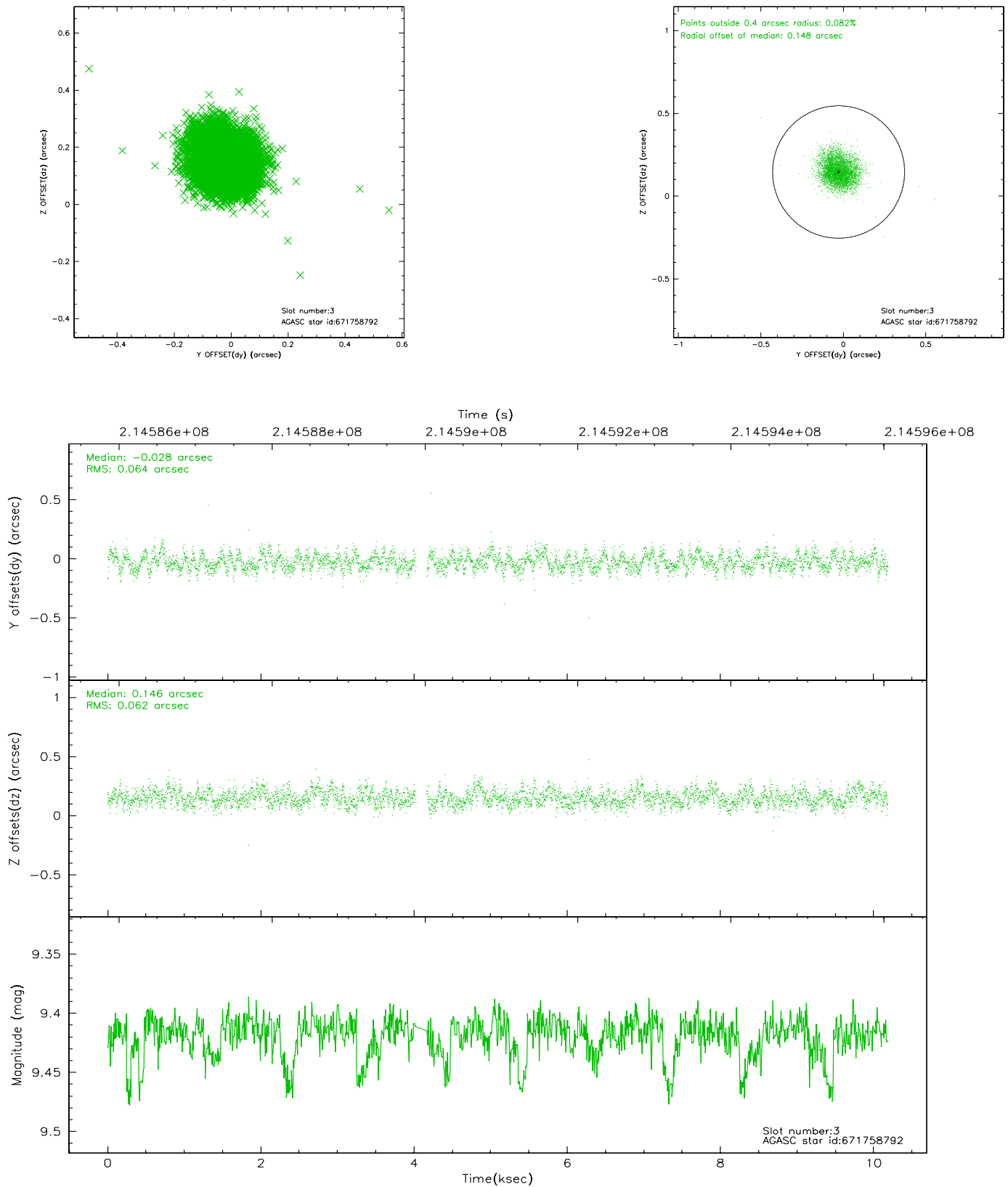


Slot Statistics

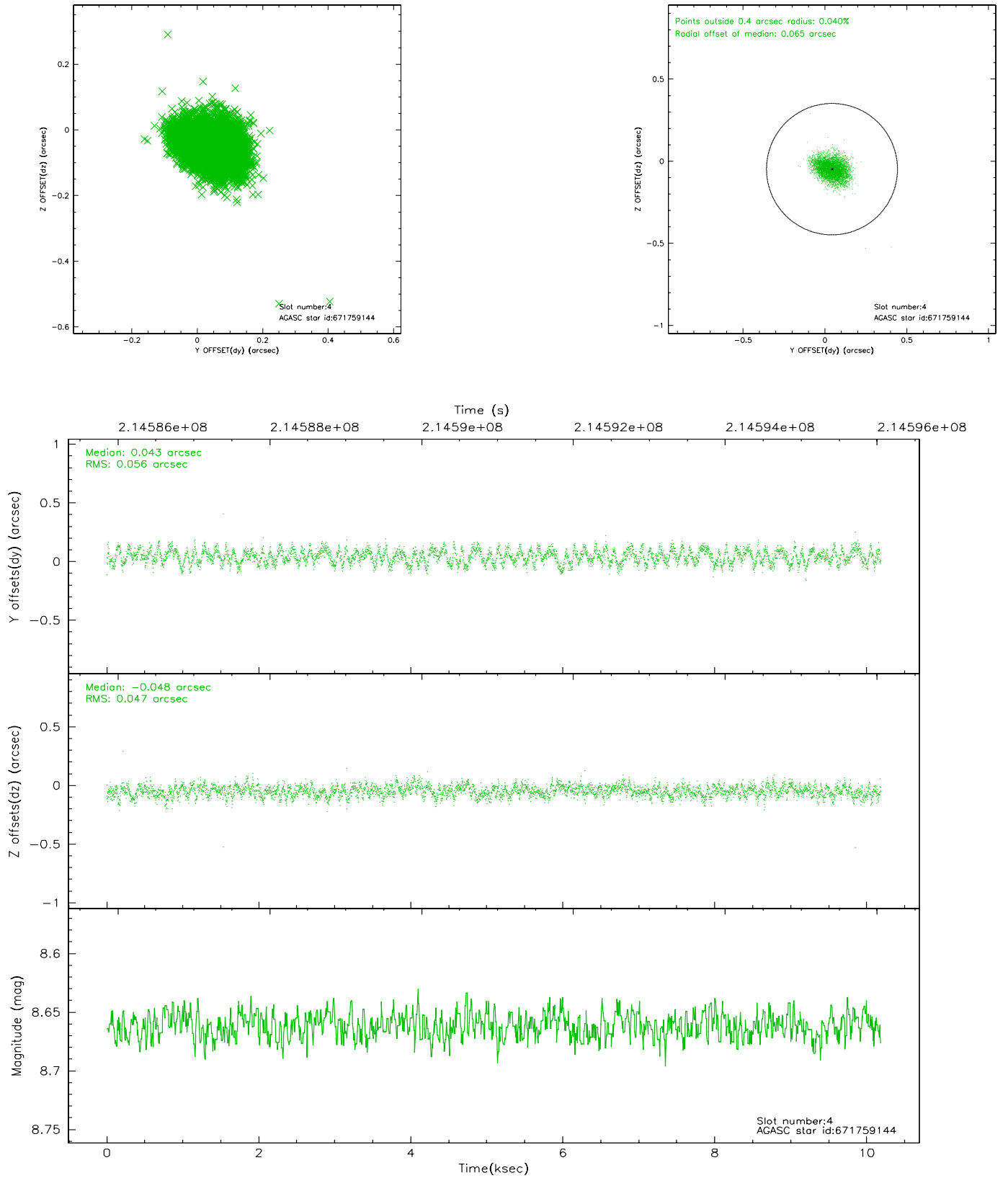
slot	status	id	mag	n_pts	med_dy	med_dz	dr1	dr2	ra	dec	mean_y	mean_z
0	FID	ACIS-S-2	7.08	2484	-0.061	-0.114	0.009	0.015	0.000000	0.000000	-757.52	-1858.15
1	FID	ACIS-S-4	7.18	2484	0.106	0.060	0.006	0.012	0.000000	0.000000	2155.71	49.89
2	FID	ACIS-S-5	7.22	2485	-0.076	0.063	0.008	0.014	0.000000	0.000000	-1809.69	44.18
3	GUIDE	671758792	9.42	4895	-0.028	0.146	0.094	0.149	280.738640	-5.820907	1165.47	1649.81
4	GUIDE	671759144	8.66	4968	0.043	-0.048	0.078	0.122	279.658906	-5.990264	1154.90	-2264.26
5	GUIDE	671762280	8.86	4969	0.049	-0.023	0.060	0.099	280.028746	-5.773981	595.50	-833.99
6	GUIDE	671227296	8.43	4969	0.033	0.066	0.083	0.127	280.875917	-5.465795	-17.94	2339.04
7	GUIDE	671760936	9.35	4964	-0.100	-0.140	0.091	0.147	279.764572	-5.712435	226.55	-1732.74

2.4 Star Slots

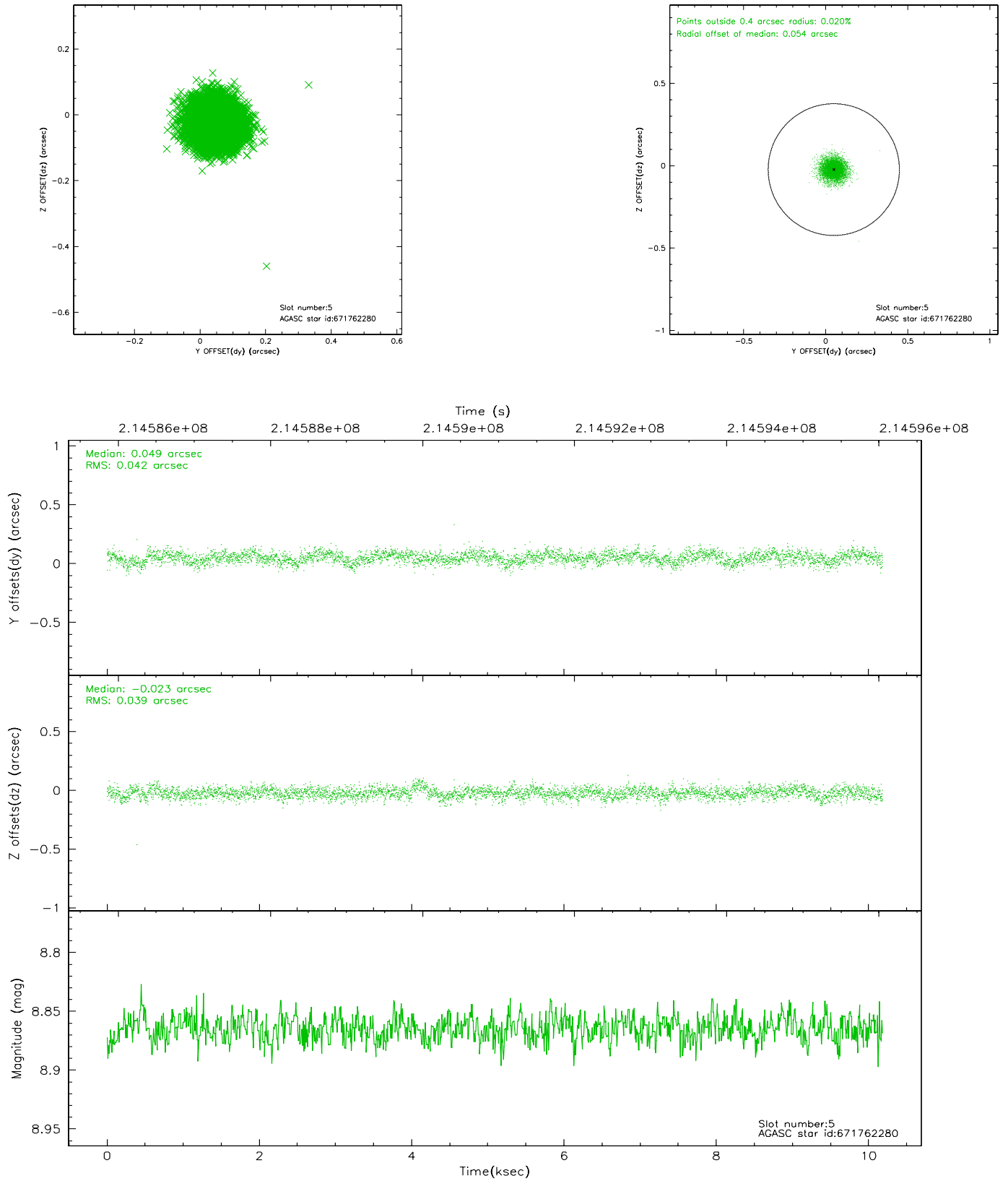
2.4.1 Slot 3



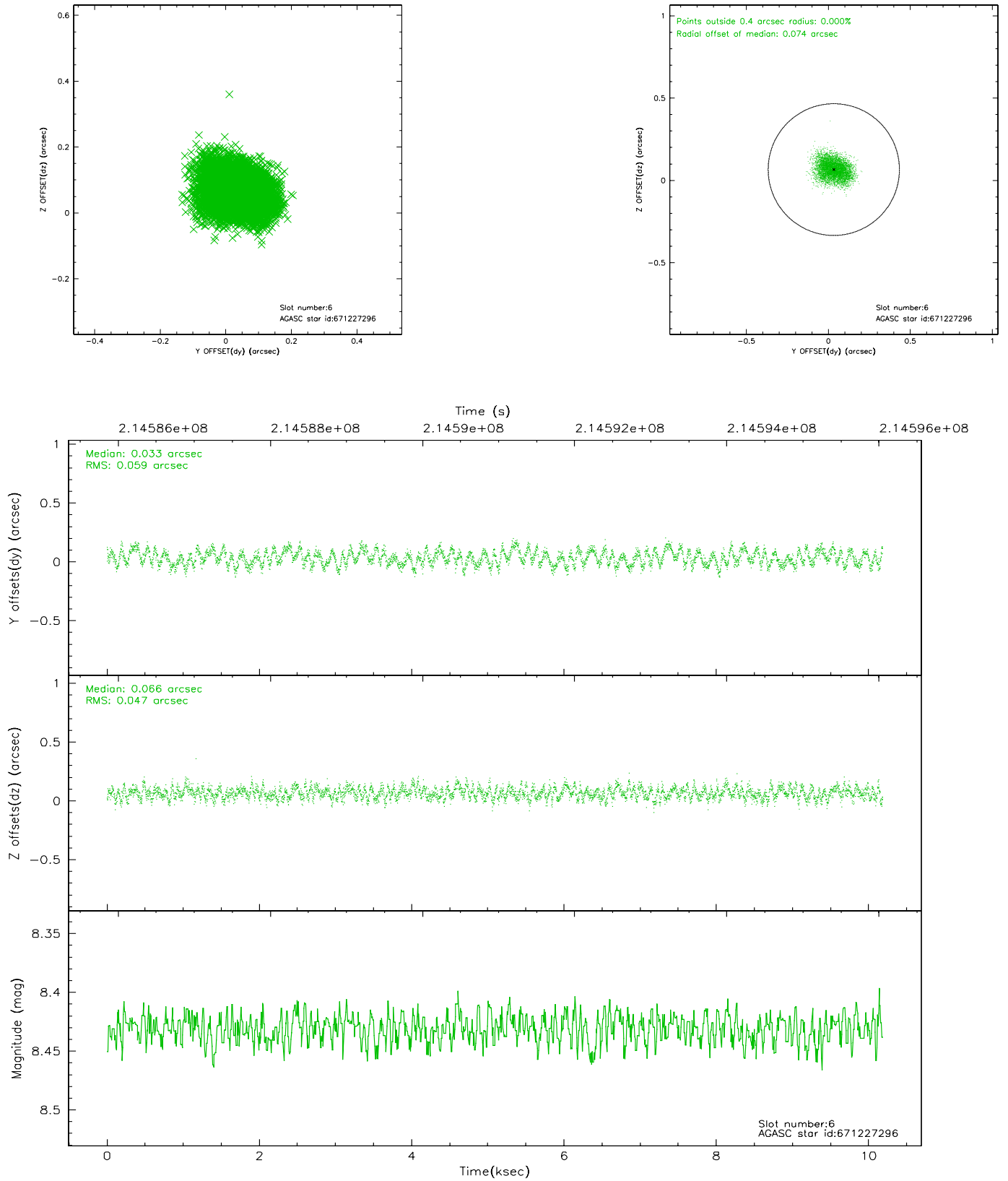
2.4.2 Slot 4



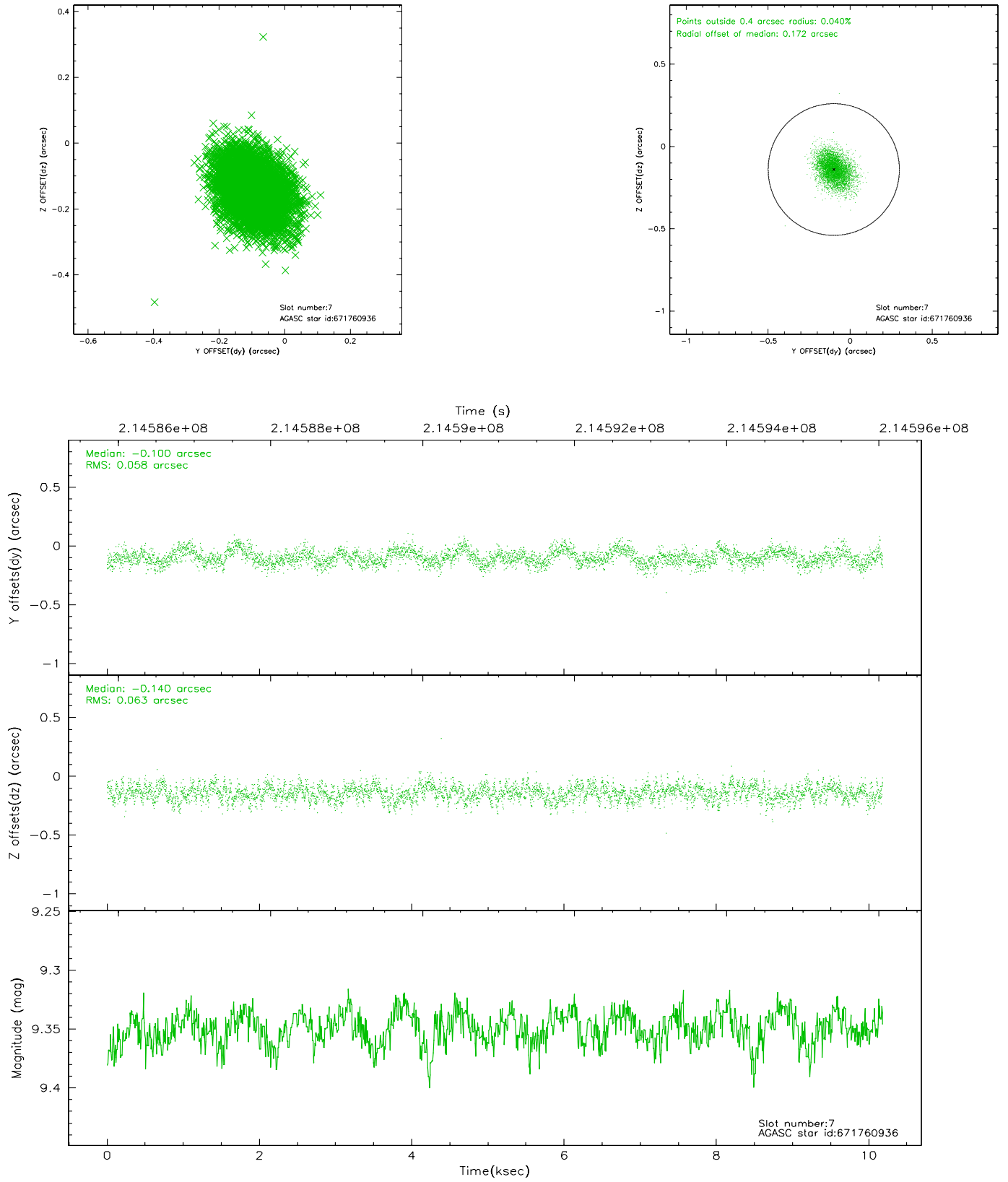
2.4.3 Slot 5



2.4.4 Slot 6

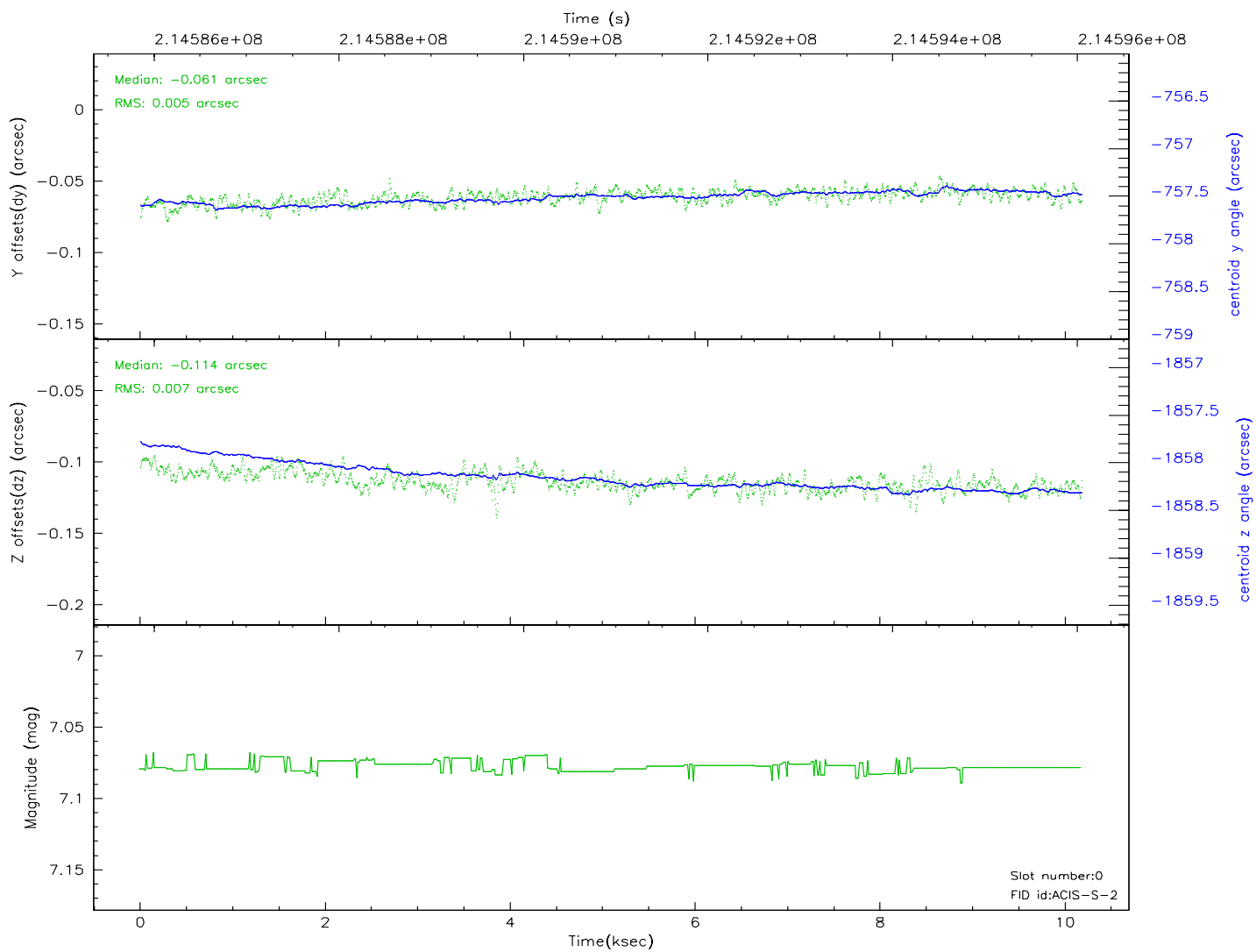
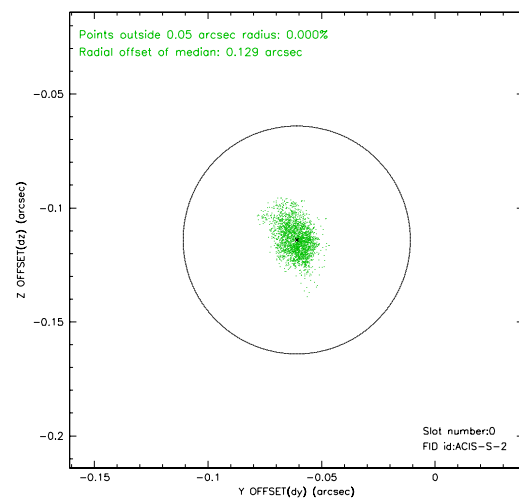
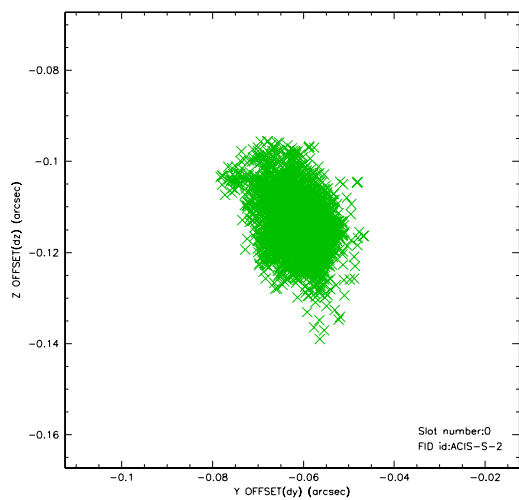


2.4.5 Slot 7

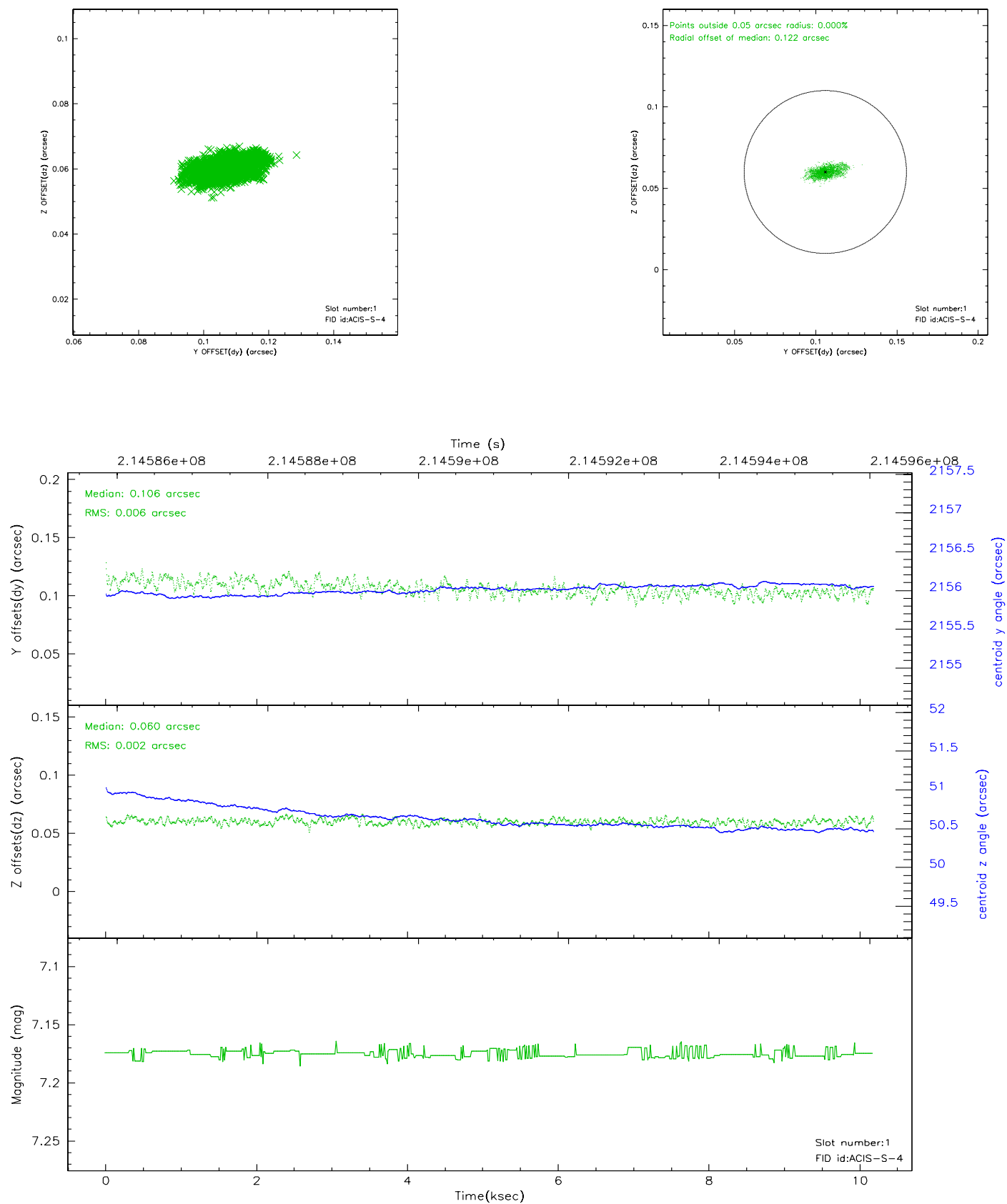


2.5 FID Slots

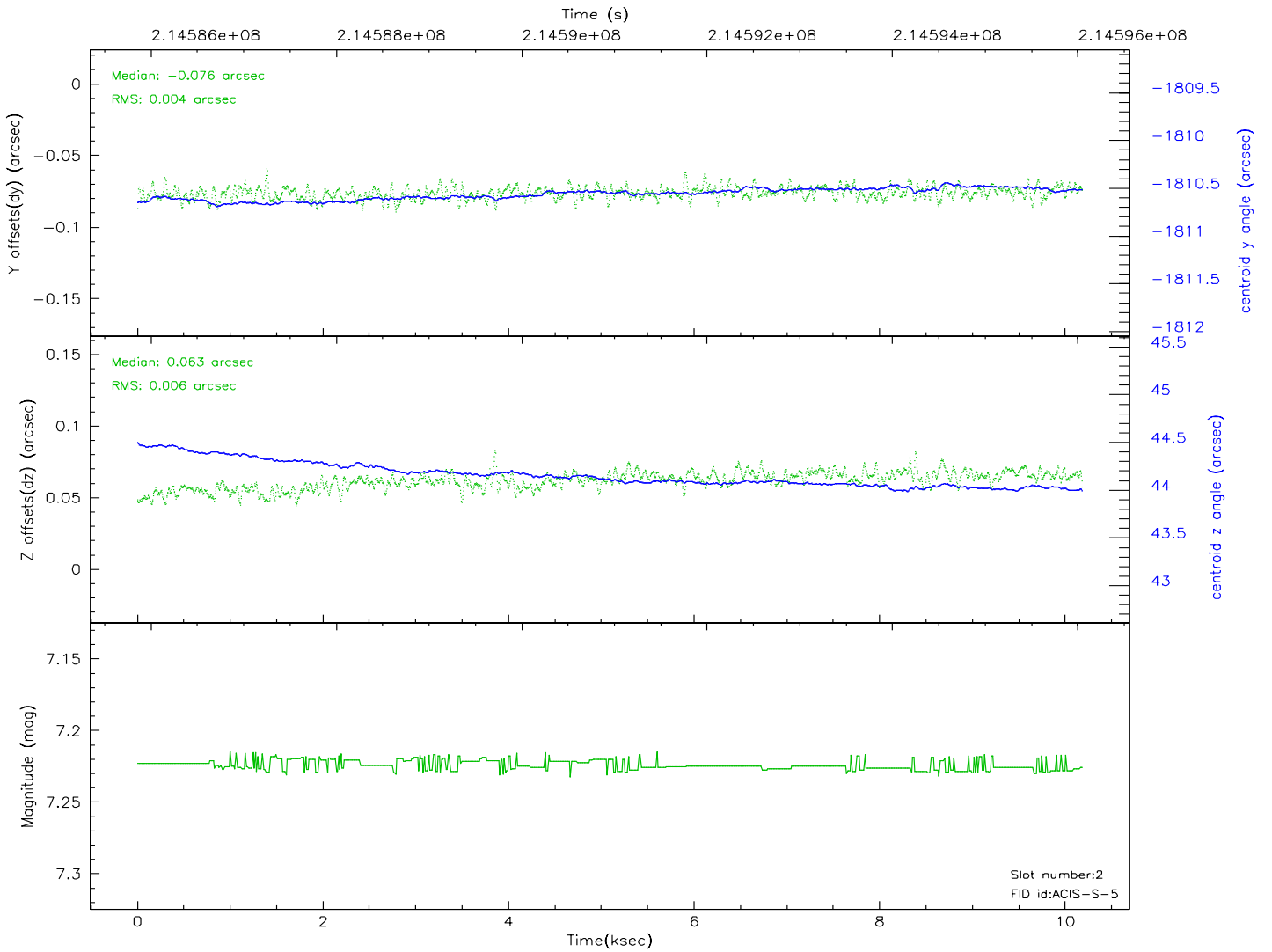
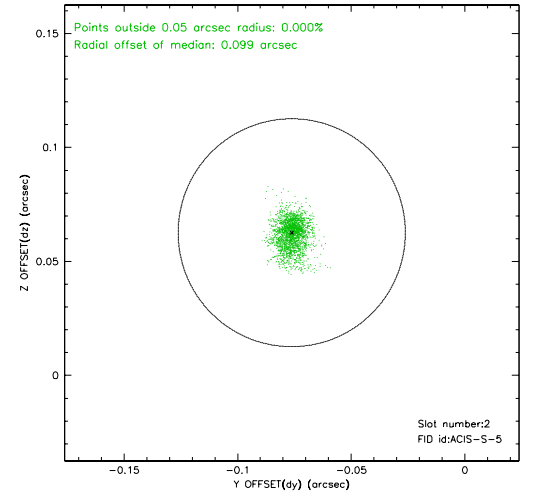
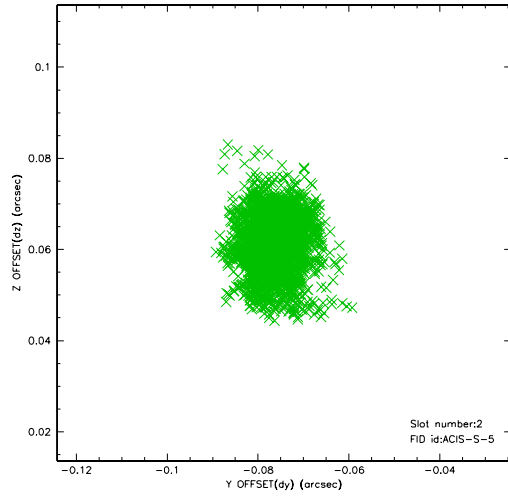
2.5.1 Slot 0



2.5.2 Slot 1



2.5.3 Slot 2

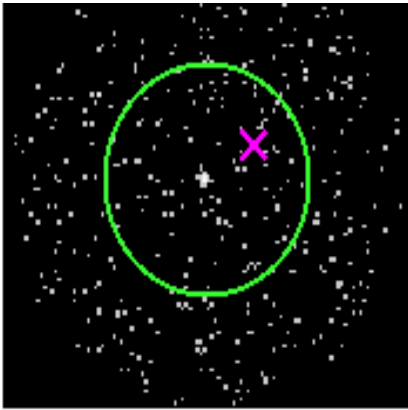


3 Gratings

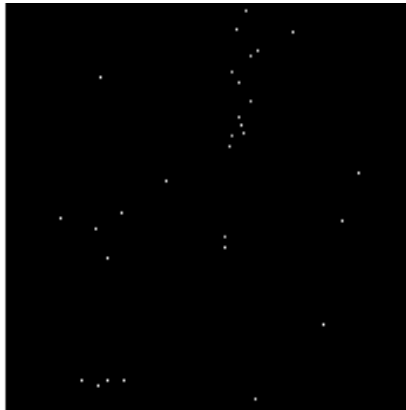
3.1 HEG Arm



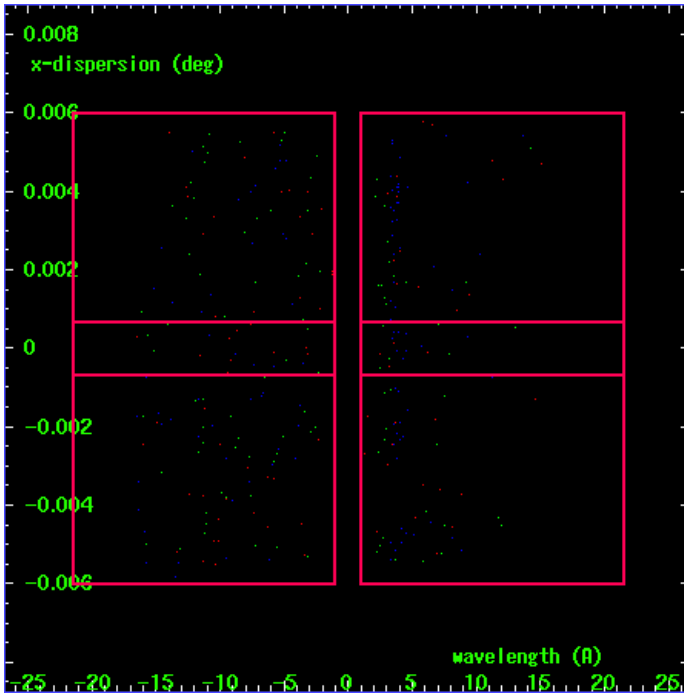
HEG Order Sort 123



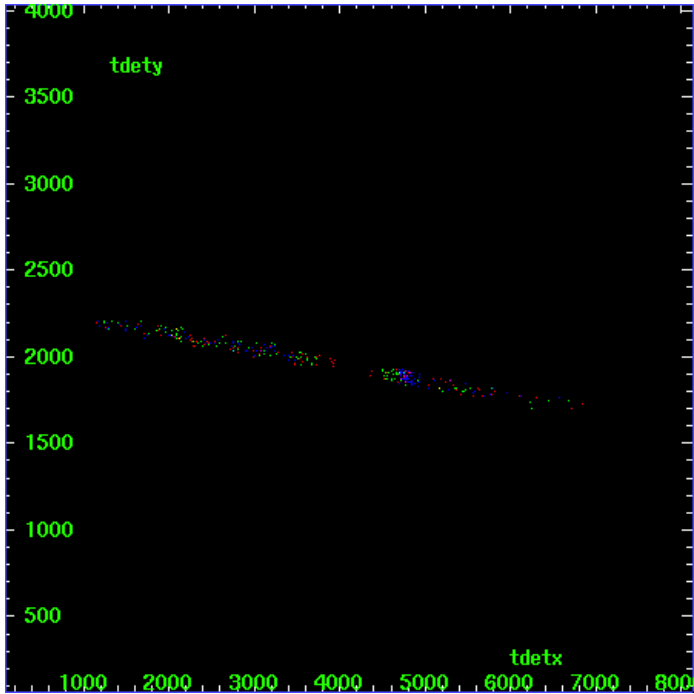
HEG Zero Order



HEG Order Sort ALL

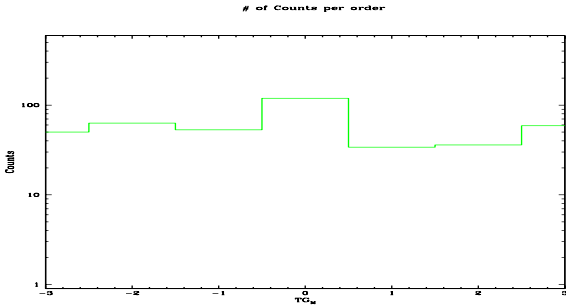


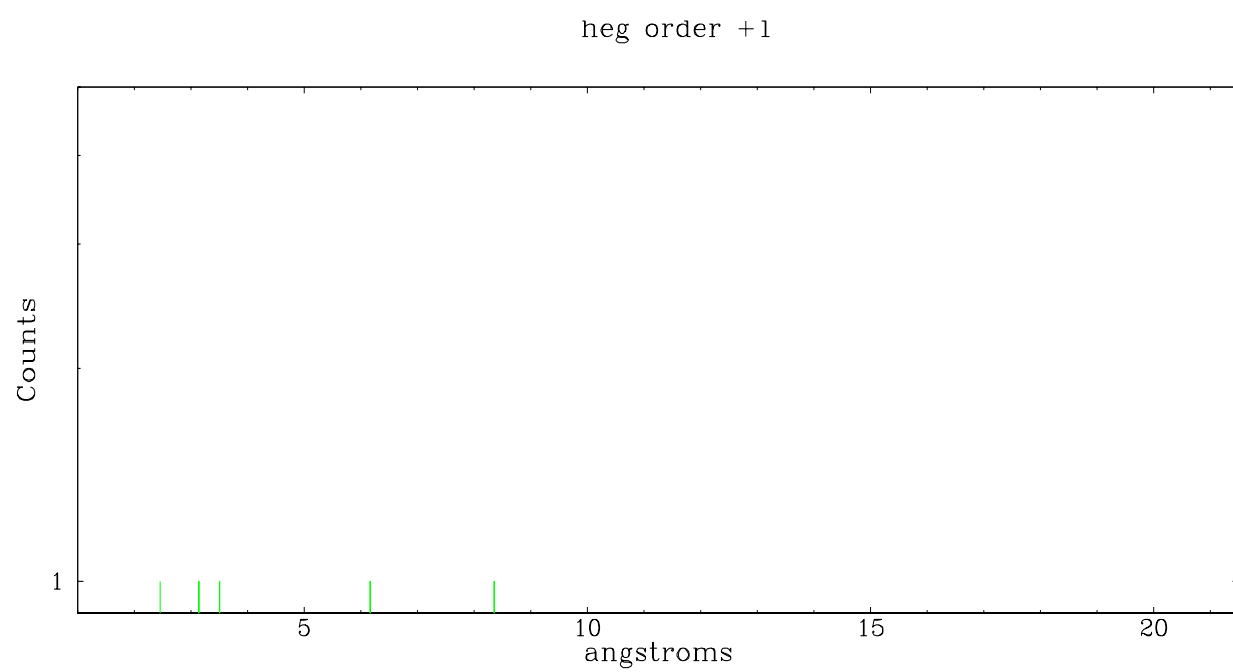
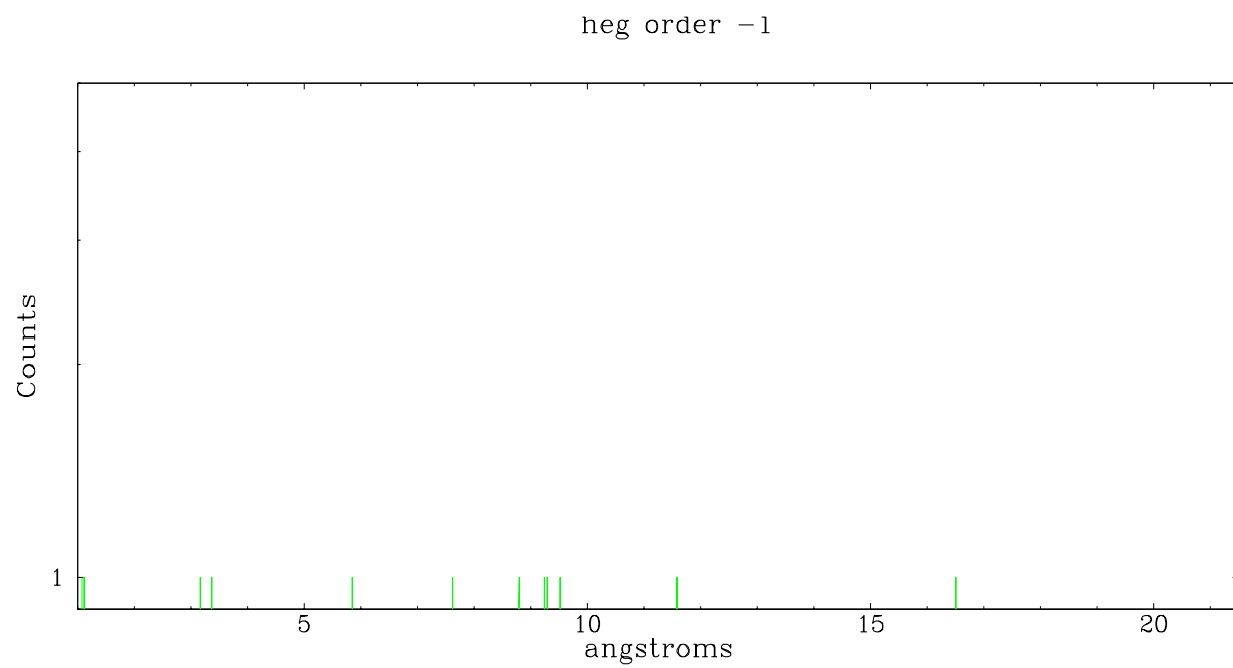
Spot Image HEG



Full Detector HEG

	order -3	order -2	order -1	order 0	order 1	order 2	order 3
Events	50	63	53	119	34	36	59

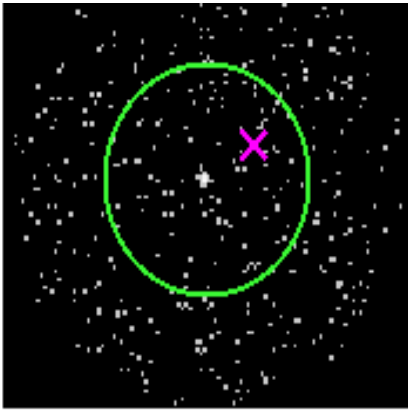




3.2 MEG Arm



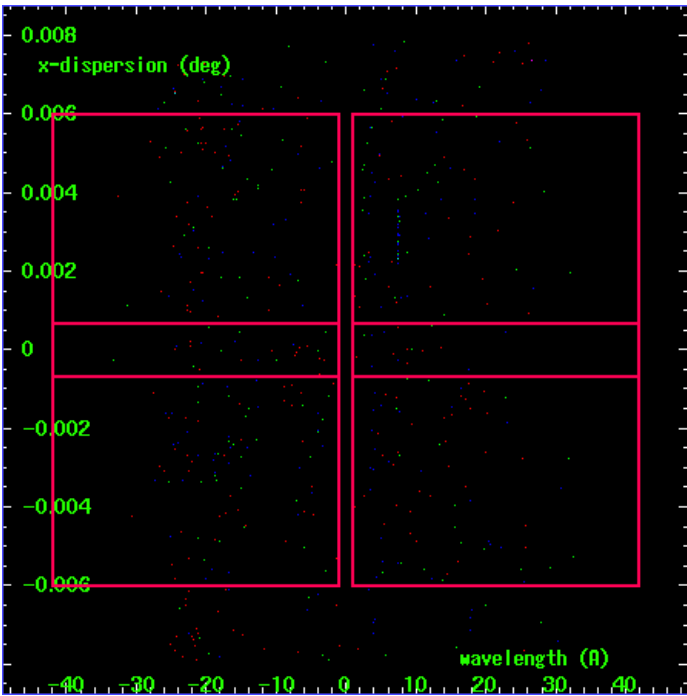
MEG Order Sort 123



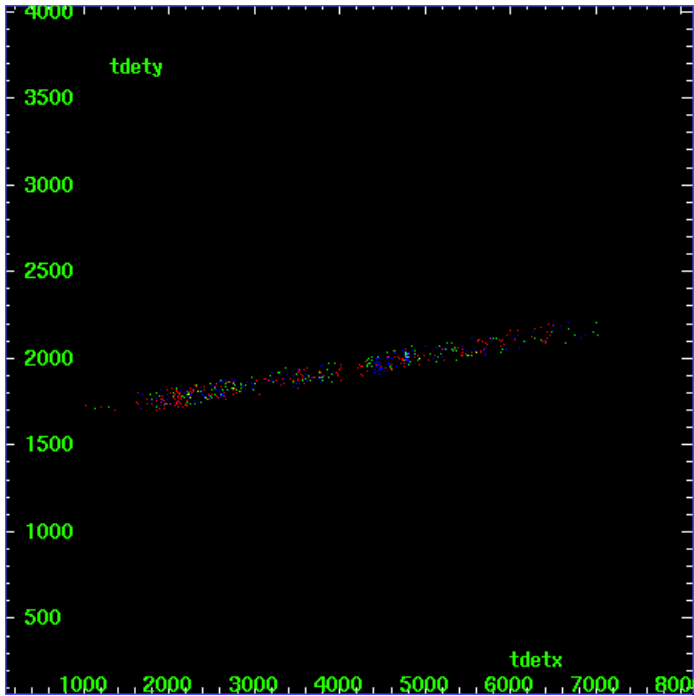
MEG Zero Order



MEG Order Sort ALL

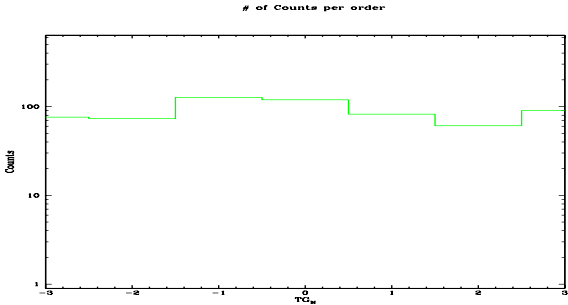


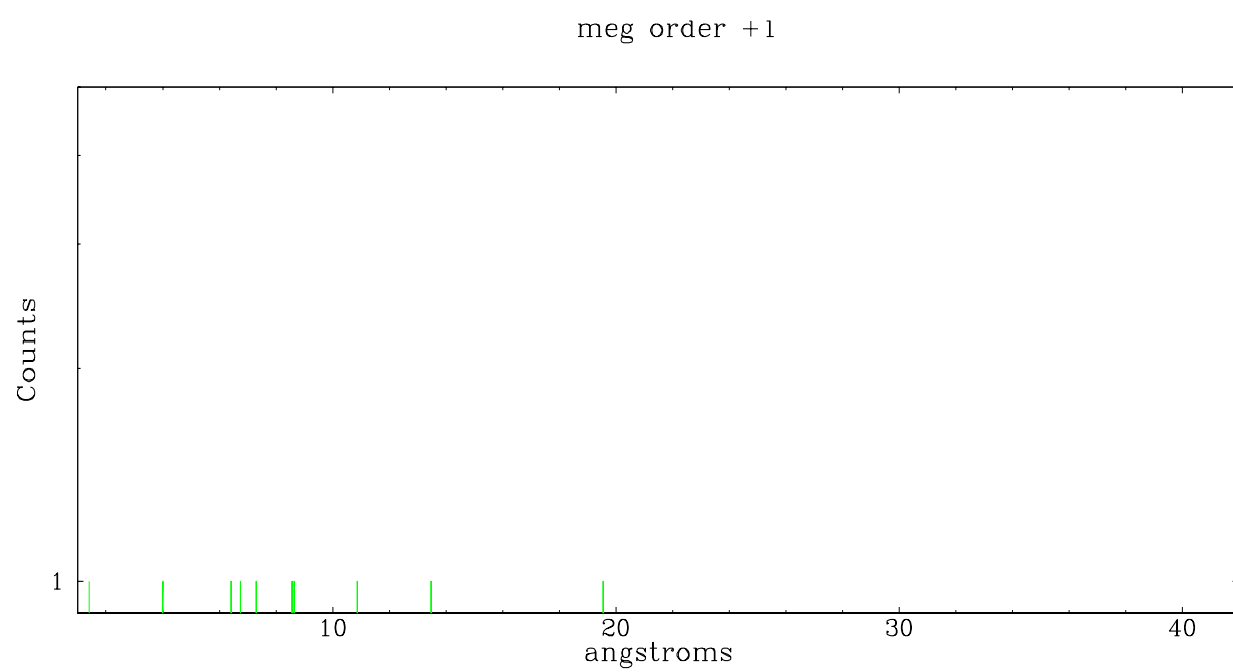
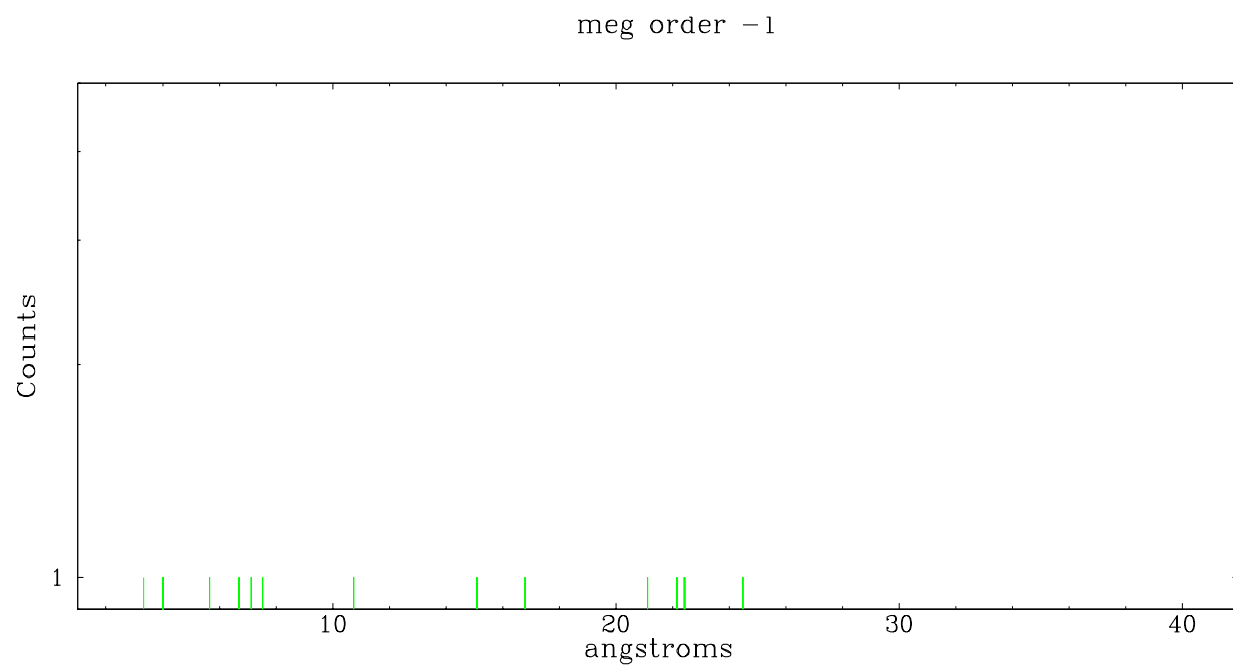
Spot Image MEG



Full Detector MEG

	order -3	order -2	order -1	order 0	order 1	order 2	order 3
Events	76	73	127	119	82	61	90





A Summary

A.1 Status

V&V Scientist	Joy Nichols
V&V Date (YYYY-MM-DD)	2006.04.17
V&V Edition	1
V&V Disposition and Status	OK
V&V Charge Time	10.169

A.2 Comments

There is a source at ra=18:40:54.5, dec=-05:30:32.2 that falls within the extraction region of the MEG dispersed spectrum.