

V&V Reference Report

L2 ASCDS Version : 7.6.7.2

Observation 4530 - L2 Version 001
Chandra X-Ray Center

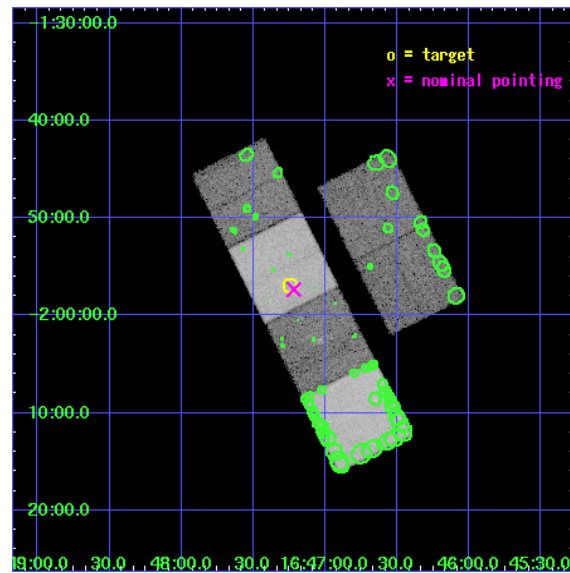
L2 Processing Date : Apr 28 2006

Contents

1	Front	2
2	OBI	3
2.1	OBI	3
2.1.1	Images	3
2.1.2	Bias	3
2.1.3	Parameters	4
2.1.4	Events	4
2.2	Compared Parameters	5
2.3	Aspect	6
2.4	Star Slots	9
2.4.1	Slot 3	9
2.4.2	Slot 4	10
2.4.3	Slot 5	11
2.4.4	Slot 6	12
2.4.5	Slot 7	13
2.5	FID Slots	14
2.5.1	Slot 0	14
2.5.2	Slot 1	15
2.5.3	Slot 2	16
3	Point Sources	17
A	Summary	18
A.1	Status	18
A.2	Comments	18

1 Front

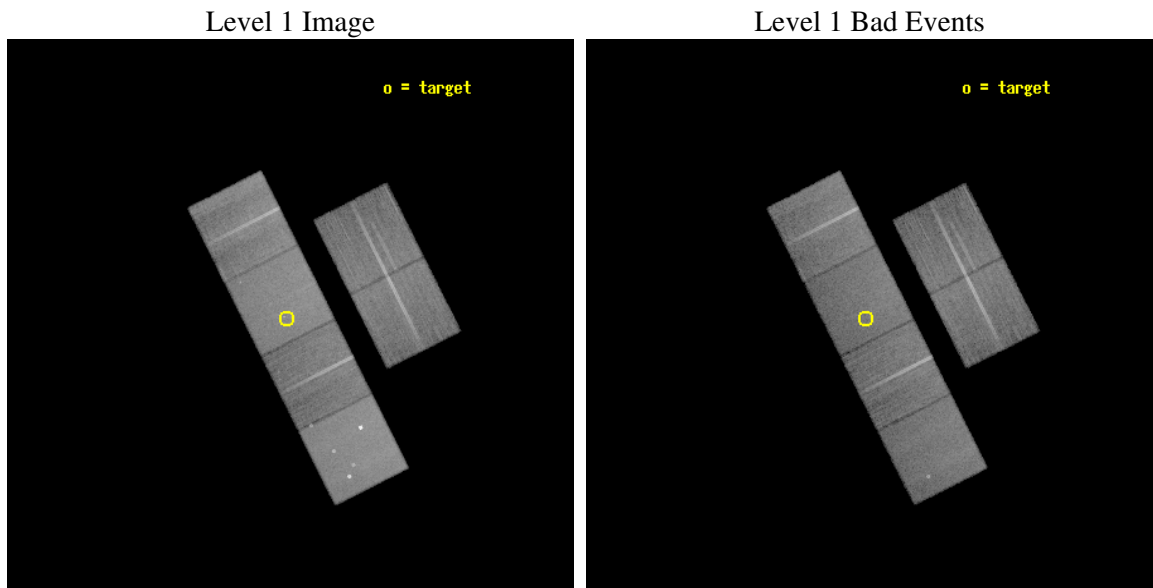
seq_num	300124
obs_id	4530
title	A Uniform Study of Globular Cluster X-ray Sources: The Keys to Cluster Dynamical Evolution
observer	Prof. Walter Lewin
object	NGC 6218
dtcycle	0
cycle	P
ra_targ	251.810417
dec_targ	-1.947778
ra_nom	251.80463697755
dec_nom	-1.955482087036
roll_nom	243.2653002684
revision	2
ontime	26959.999899566
livetime	26618.616147475
ontime2	26959.999899566
ontime3	26956.758909285
ontime5	26959.999899566
ontime6	26959.999899566
ontime7	26959.999899566
ontime8	26959.999899566
l2events	303902



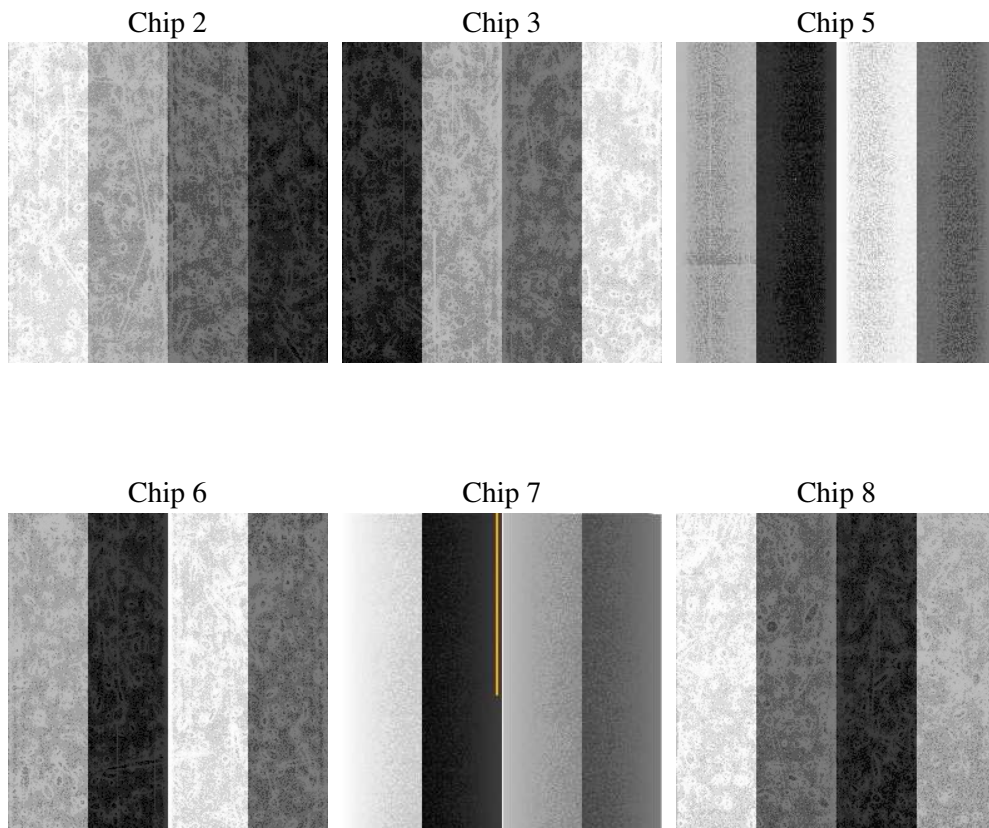
2 OBI

2.1 OBI

2.1.1 Images



2.1.2 Bias



2.1.3 Parameters

obi_num	0
ascdsver	7.6.7.2
caldsver	3.2.1
date	2006-04-28T02:30:22
revision	2

sched_exp_time	27000.000000
ontime	26965.202657878
ontime2	26965.202637941
ontime3	26961.961667597
ontime5	26965.202657878
ontime6	26965.202657878
ontime7	26965.202657878
ontime8	26965.202657878
l1events	1385073

2.1.4 Events

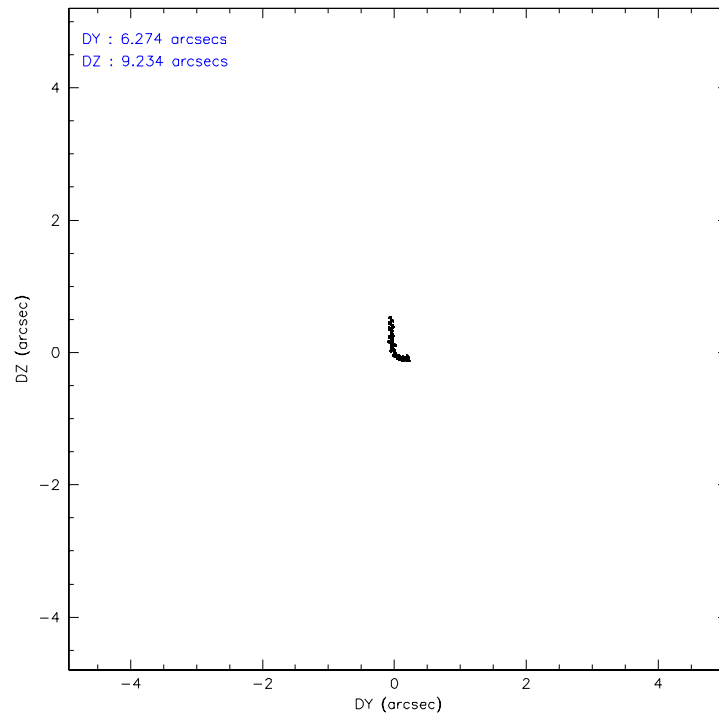
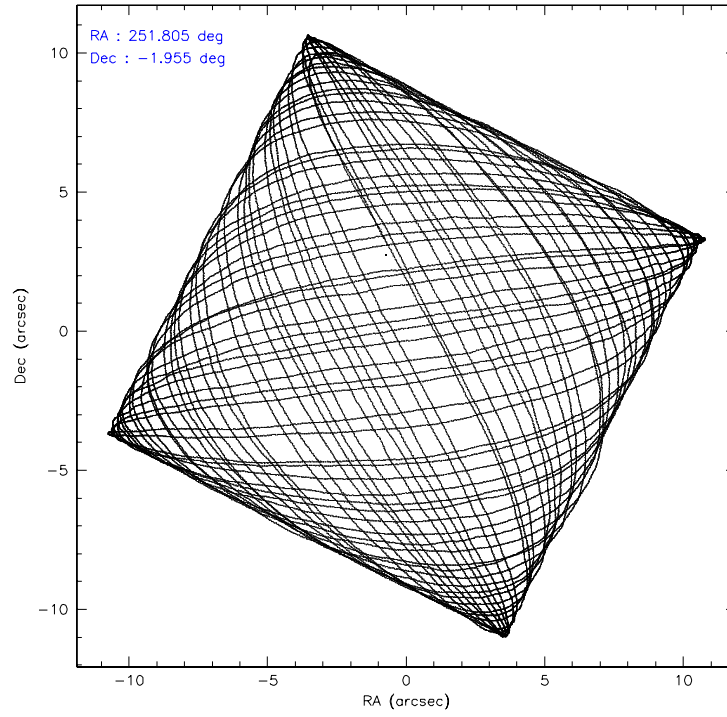
	ccd 2	ccd 3	ccd 5	ccd 6	ccd 7	ccd 8
level 1 events	199979	188758	295864	193871	263801	242800
rejected events	176776	166185	161512	168646	161832	191276
rejected %	88%	88%	54%	86%	61%	78%

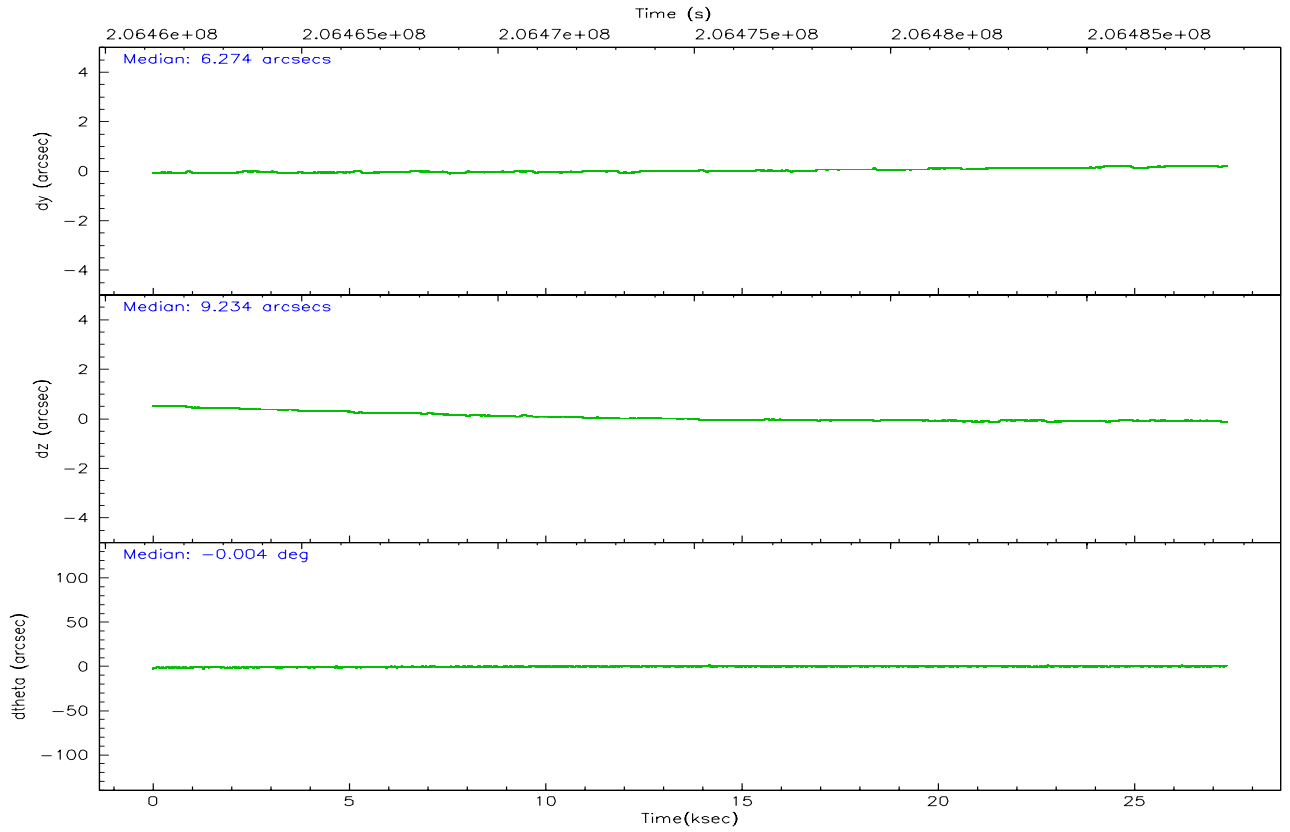
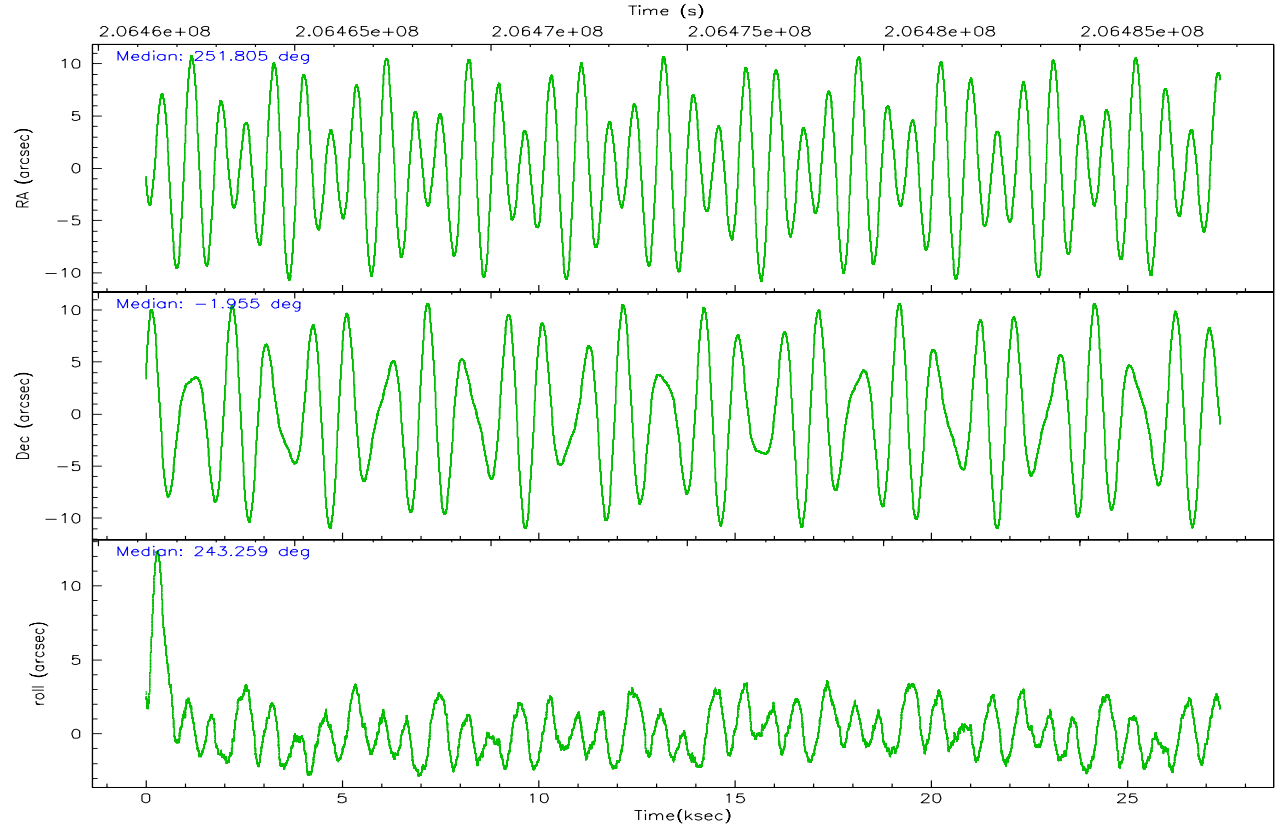
	ccd 2	ccd 3	ccd 5	ccd 6	ccd 7	ccd 8
grade 0 events	10379	10082	15513	11135	6356	16528
	5%	5%	5%	5%	2%	6%
grade 1 events	110	130	307	84	164	165
	0%	0%	0%	0%	0%	0%
grade 2 events	4660	4231	41154	4954	25332	11379
	2%	2%	13%	2%	9%	4%
grade 3 events	2155	2211	2858	2318	5324	5229
	1%	1%	0%	1%	2%	2%
grade 4 events	2094	2116	2619	2255	5130	5042
	1%	1%	0%	1%	1%	2%
grade 5 events	7657	8564	13853	8992	17357	11443
	3%	4%	4%	4%	6%	4%
grade 6 events	3917	3936	72225	4569	59839	13359
	1%	2%	24%	2%	22%	5%
grade 7 events	169007	157488	147335	159564	144299	179655
	84%	83%	49%	82%	54%	73%

2.2 Compared Parameters

Parameter	Planned	Actual	Parameter	Planned	Actual
Instrument	ACIS	ACIS	Obspar format version number	6	6
Detector	ACIS-235678	ACIS-235678	Obspar file type	PREDICTED	ACTUAL
Grating	NONE	NONE	Obspar update status	NONE	UPDATED
Data mode	FAINT	FAINT	On-chip summing requested	N	N
Observation mode	POINTING	POINTING	Subarray requested	NONE	NONE
Pointing RA	251.802701	251.8046369775514	Alternating exposures requested	N	N
Pointing Dec	-1.928359	-1.955482087035978	Primary exposure time	0.000000	3.2
Pointing Roll	243.108602	243.2653002684018			
SIM focus pos (mm)	-0.684267	-0.6828225247311905			
SIM defocus (mm)	0	0.001444936568705701			
SIM translation stage pos (mm)	-190.132523	-190.1425803651734			
SIM translation stage offset (mm)	0	0.01005778216563158			
Observation start time	206461582.184000	206460532.96503			
Observation start date	2004-07-17T14:25:18	2004-07-17T14:08:52			
Observation end time	206488582.184000	206490236.44135			
Observation end date	2004-07-17T21:55:18	2004-07-17T22:23:56			
Read mode	TIMED	TIMED			

2.3 Aspect



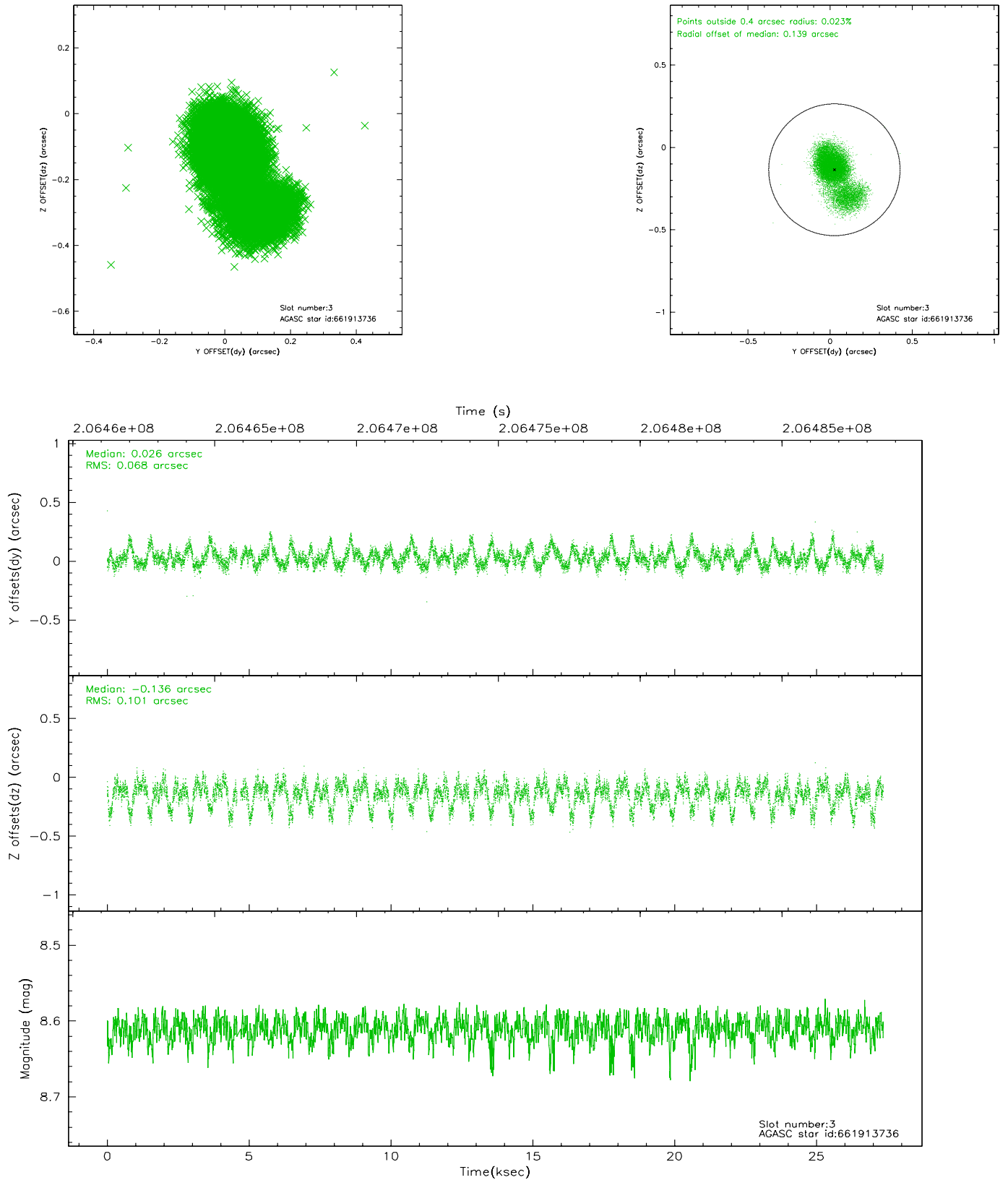


Slot Statistics

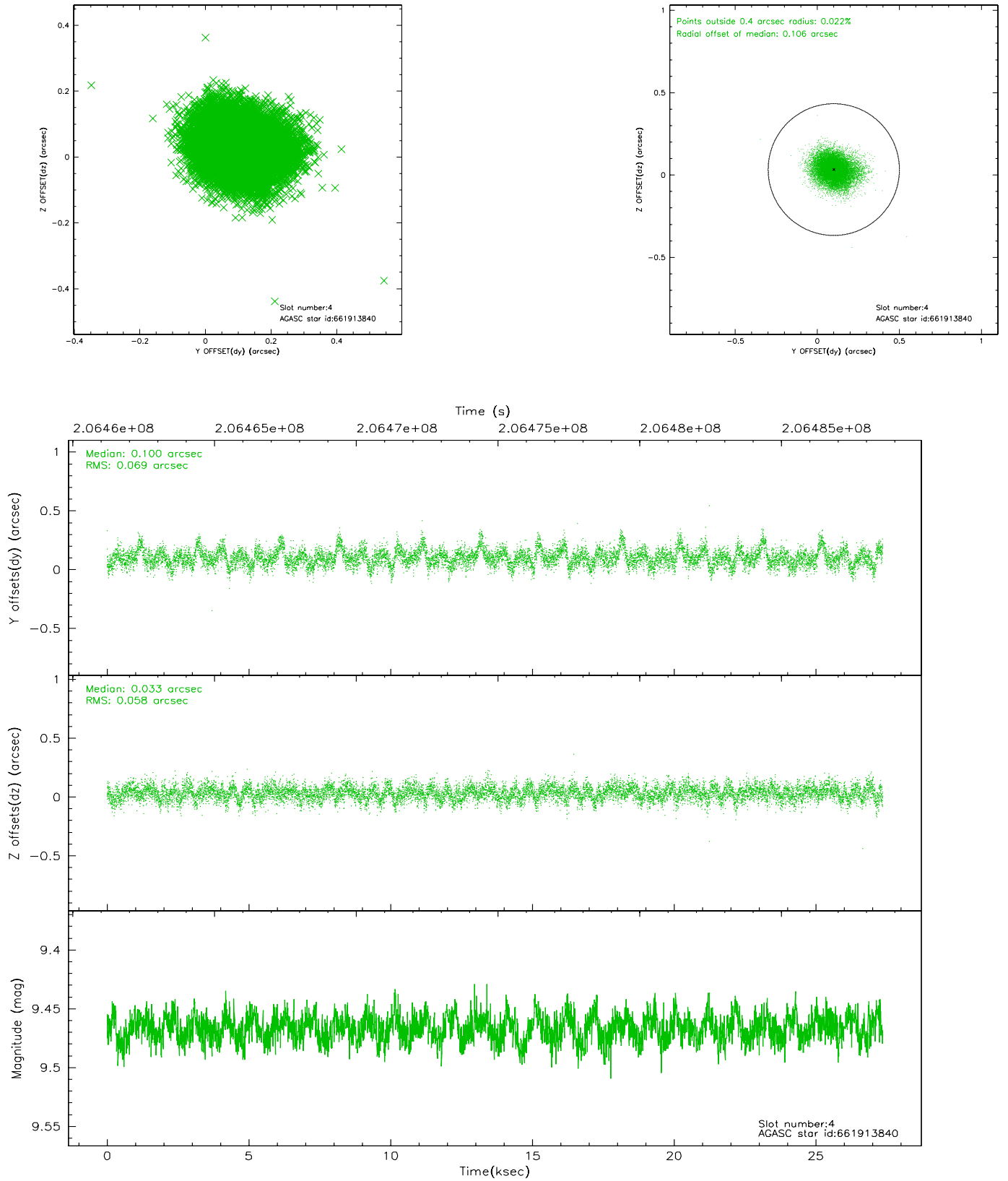
slot	status	id	mag	n_pts	med_dy	med_dz	dr1	dr2	ra	dec	mean_y	mean_z
0	FID	ACIS-S-2	7.10	6674	-0.043	-0.020	0.010	0.017	0.000000	0.000000	-759.07	-1730.51
1	FID	ACIS-S-4	7.21	6672	0.049	0.026	0.005	0.008	0.000000	0.000000	2154.24	177.94
2	FID	ACIS-S-5	7.23	6674	-0.037	0.003	0.010	0.018	0.000000	0.000000	-1811.80	171.67
3	GUIDE	661913736	8.61	13282	0.026	-0.136	0.122	0.231	251.379843	-1.578178	-435.16	-1927.18
4	GUIDE	661913840	9.47	13340	0.100	0.033	0.096	0.158	252.011553	-1.865356	-541.39	567.67
5	GUIDE	661913904	9.53	13307	0.055	0.096	0.108	0.171	252.168128	-1.869419	-783.49	1077.09
6	GUIDE	661920320	8.26	13343	-0.135	-0.115	0.143	0.206	251.602336	-1.360590	-1496.09	-1567.26
7	GUIDE	662443112	10.01	13326	-0.065	0.134	0.115	0.185	251.937838	-2.151069	495.38	796.58

2.4 Star Slots

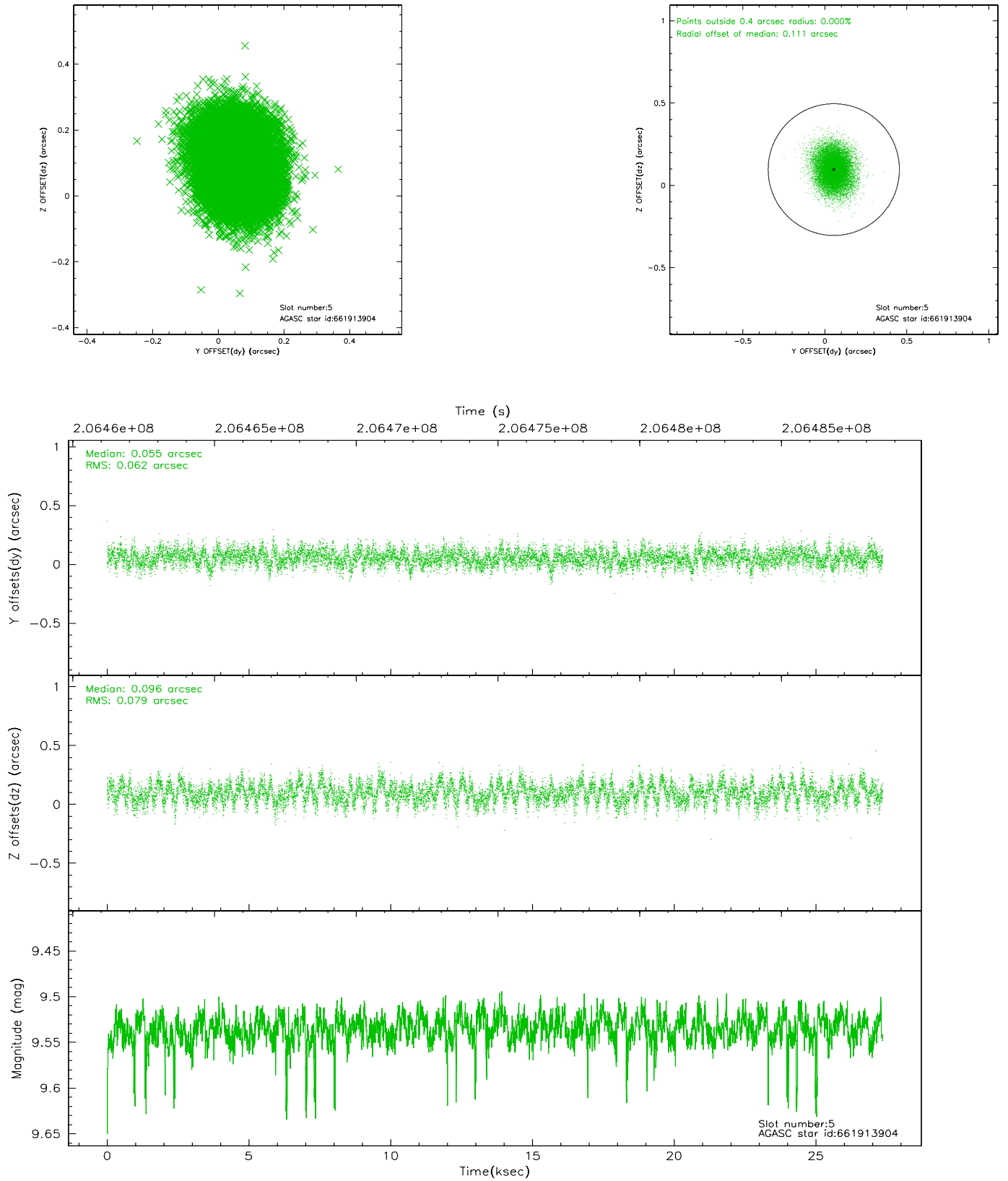
2.4.1 Slot 3



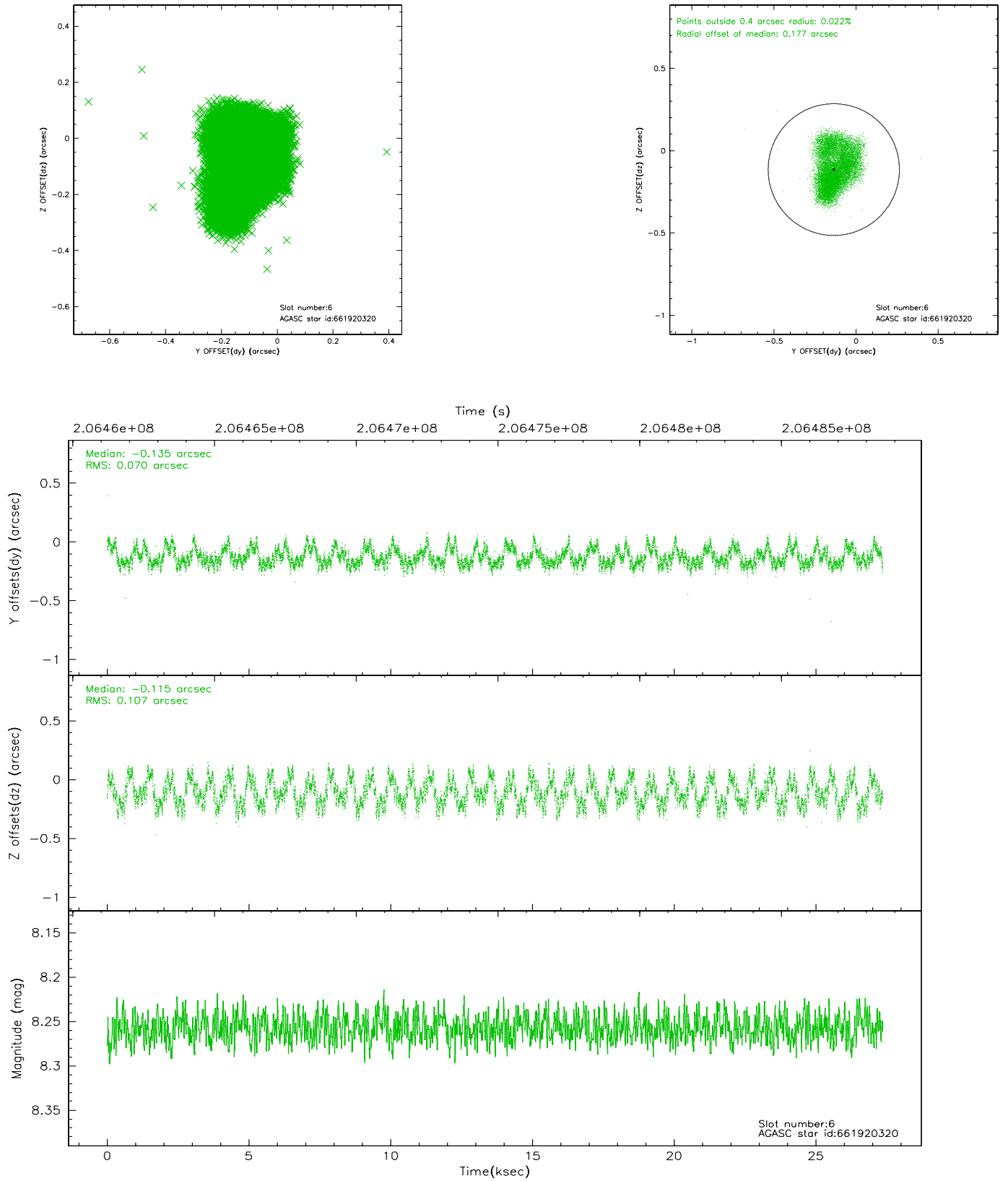
2.4.2 Slot 4



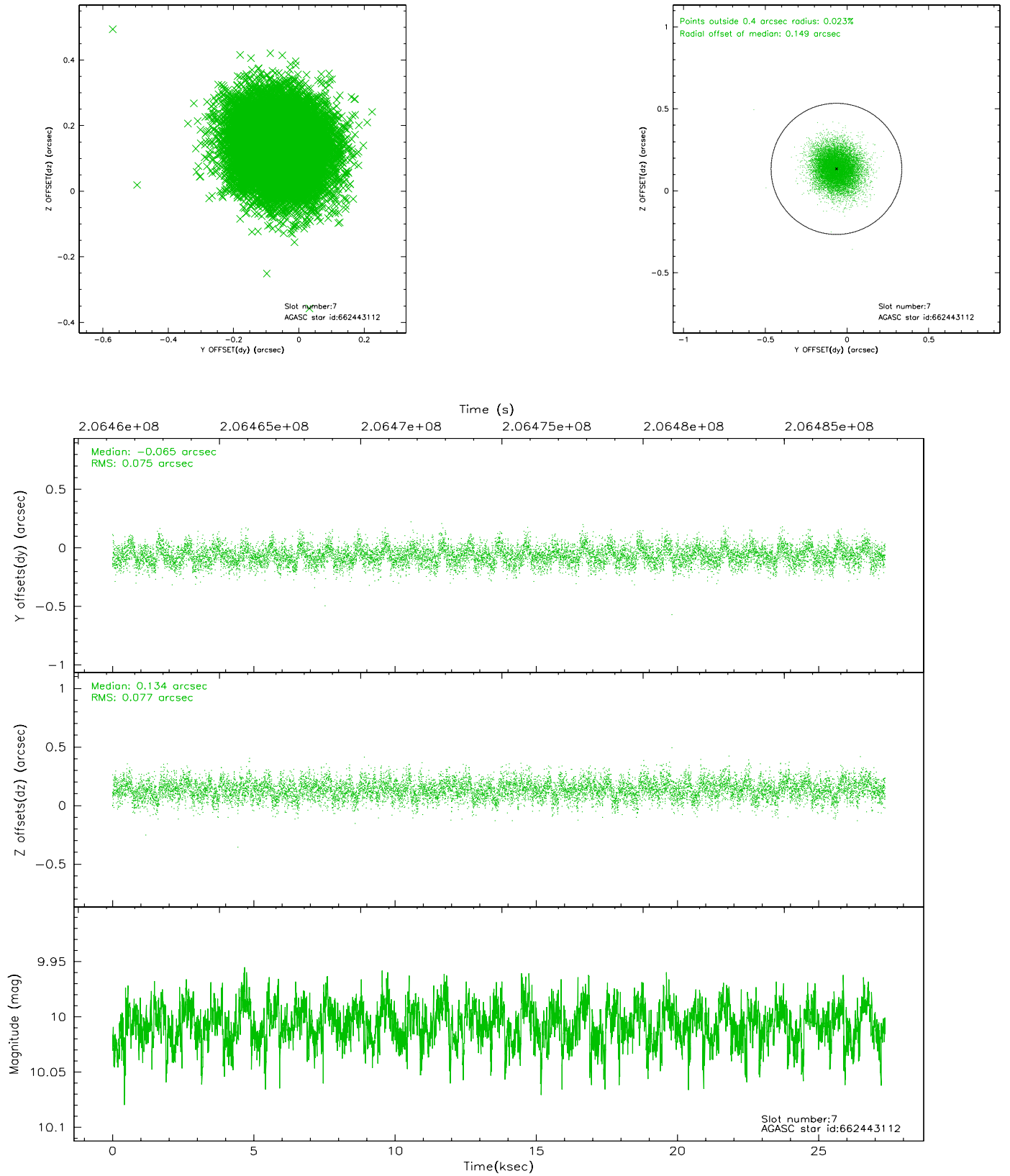
2.4.3 Slot 5



2.4.4 Slot 6

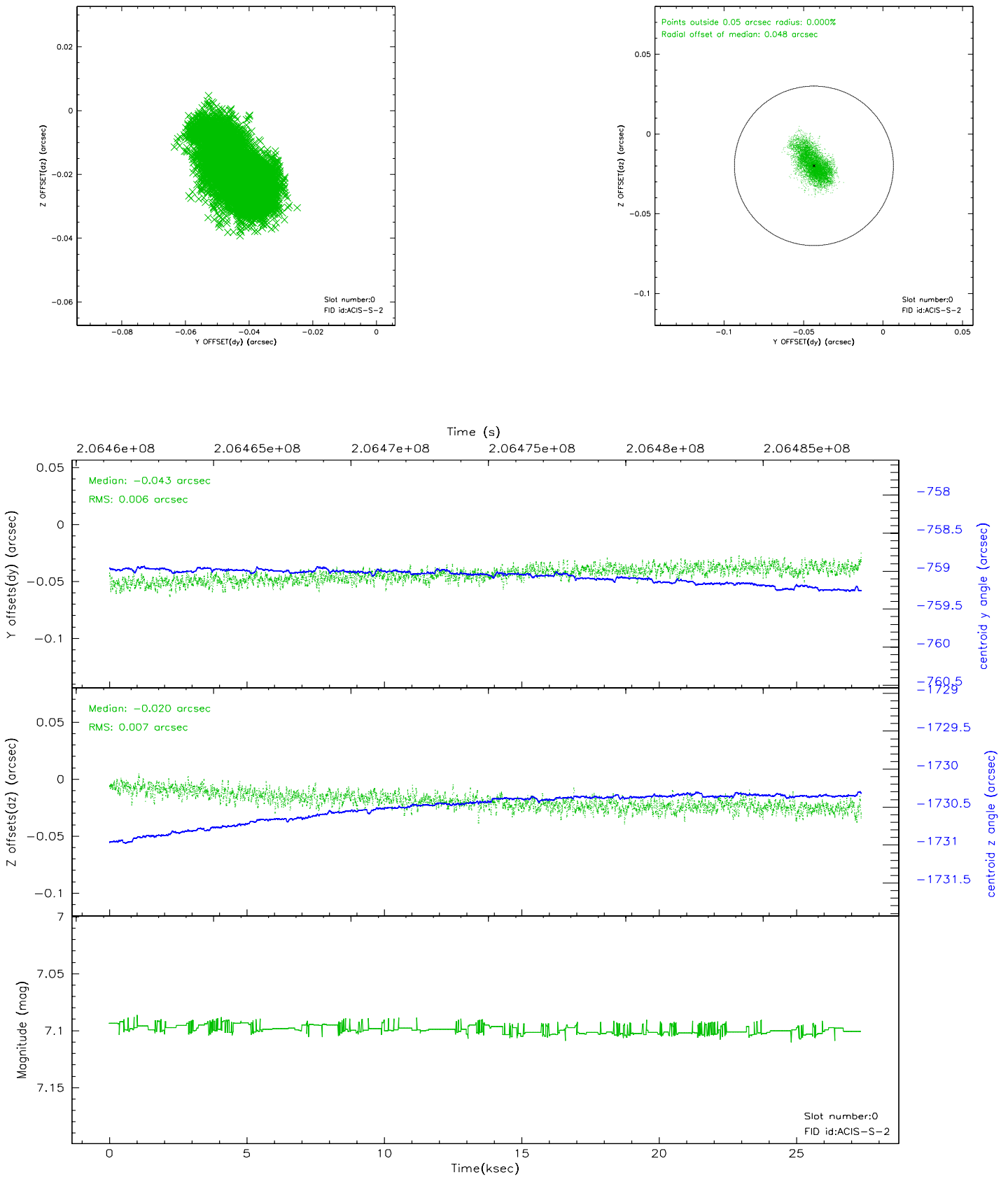


2.4.5 Slot 7

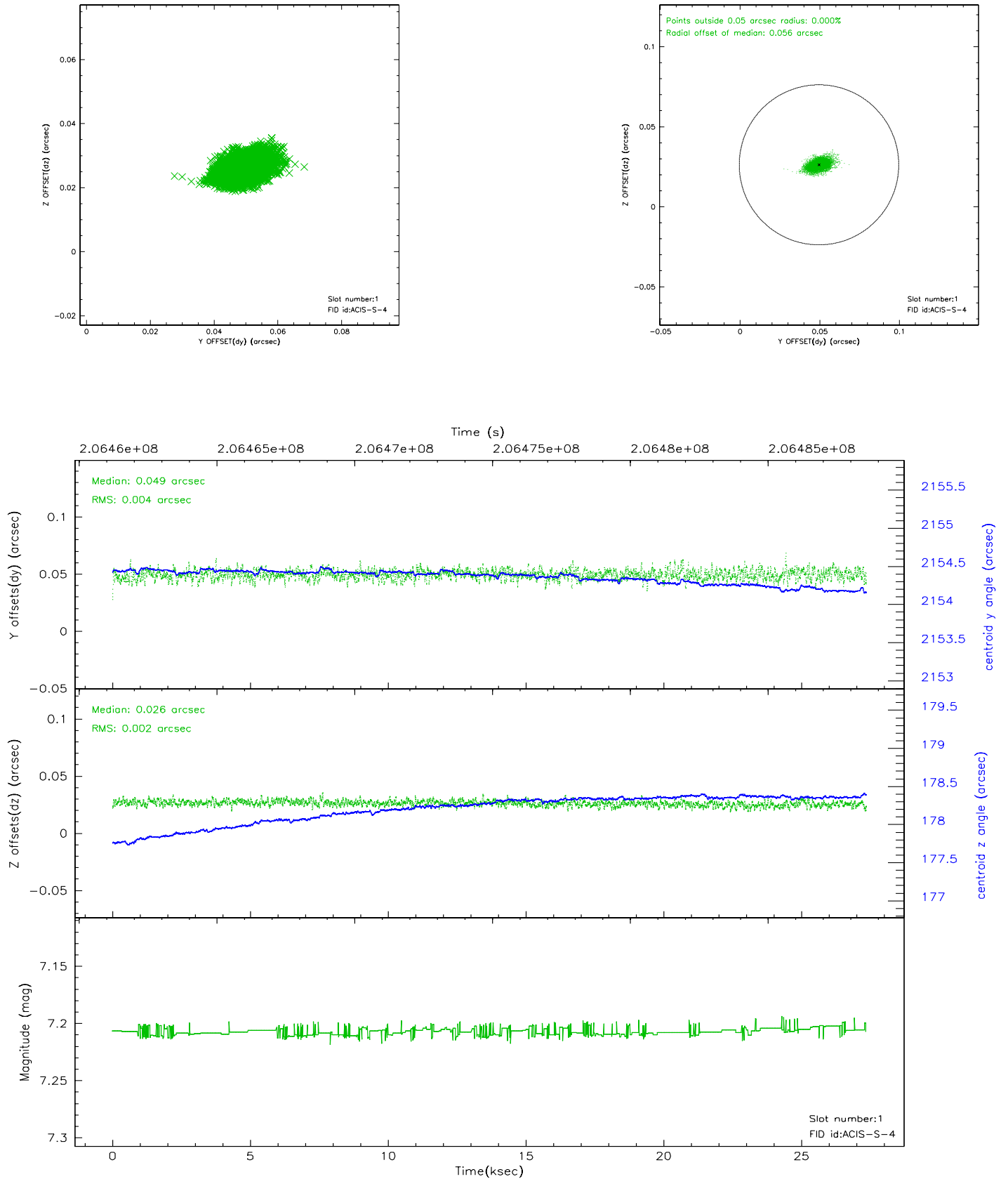


2.5 FID Slots

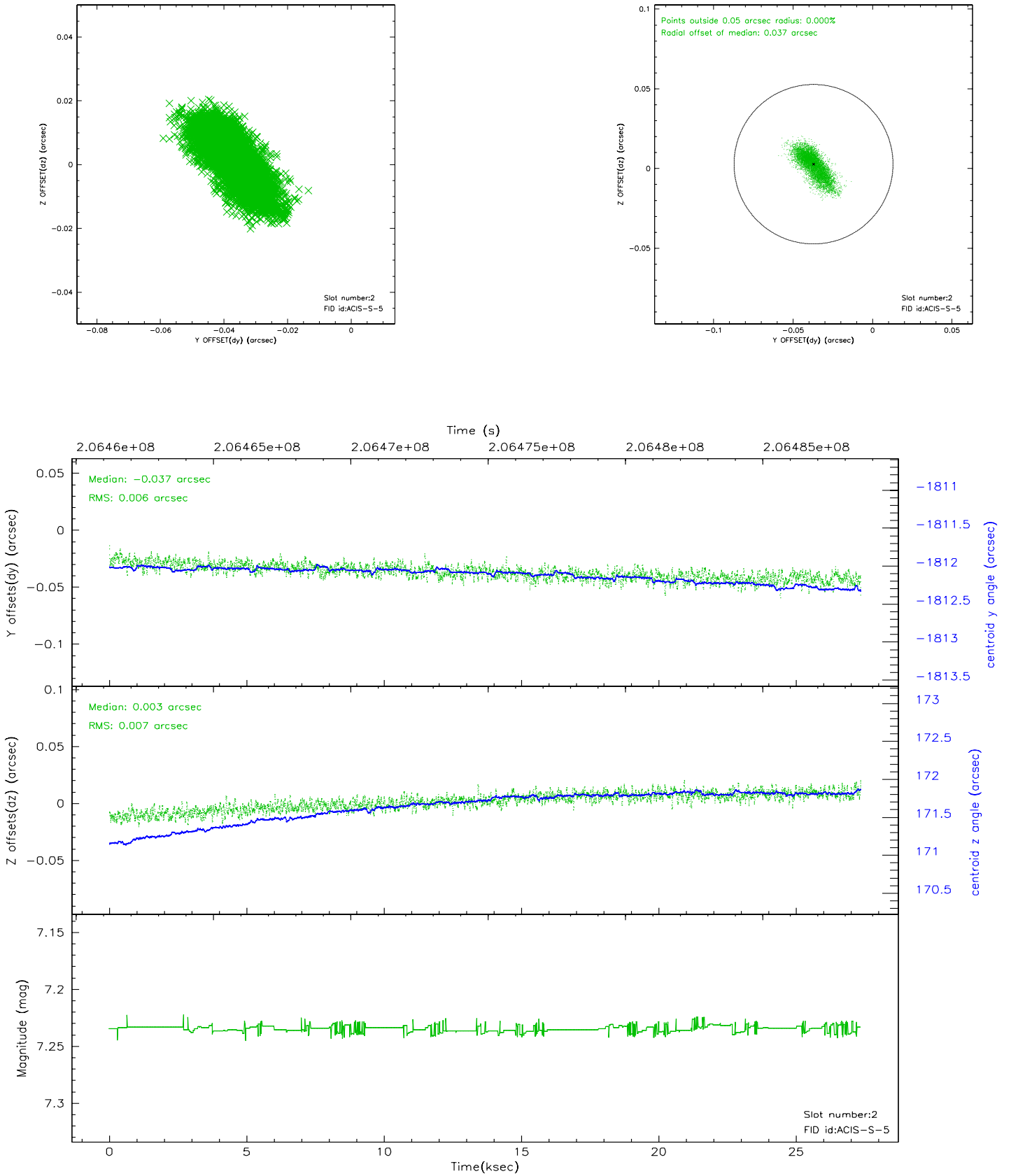
2.5.1 Slot 0



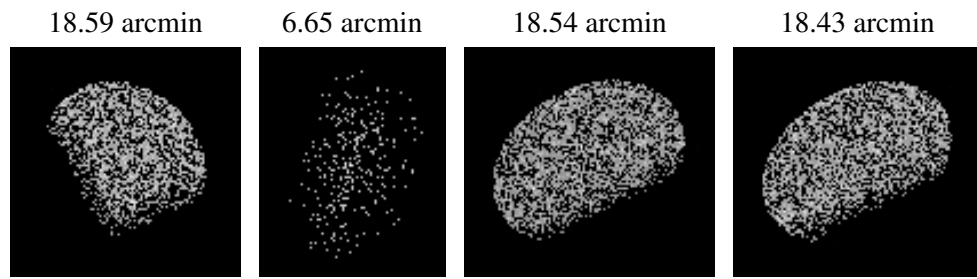
2.5.2 Slot 1



2.5.3 Slot 2



3 Point Sources



A Summary

A.1 Status

V&V Scientist	Jen Lauer
V&V Date (YYYY-MM-DD)	2006.04.28
V&V Edition	1
V&V Disposition and Status	OK
V&V Charge Time	26.959

A.2 Comments