

V&V Reference Report

L2 ASCDS Version : 8.4.5

Observation 4280 - L2 Version 3
Chandra X-Ray Center

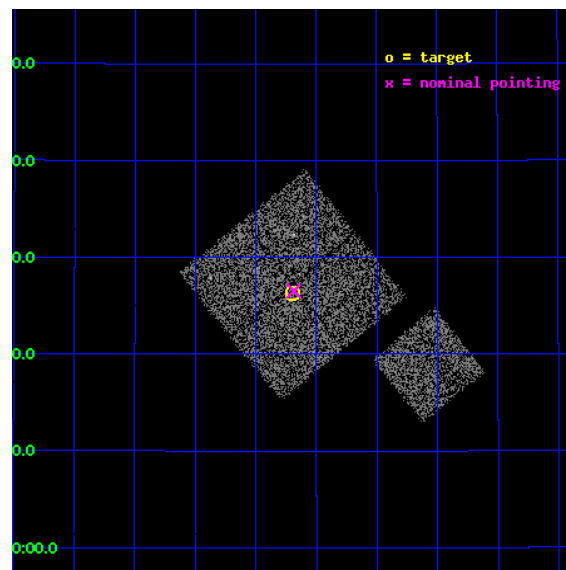
L2 Processing Date : Oct 26 2012

Contents

1	Front	2
2	OBI	3
2.1	OBI	3
2.1.1	Images	3
2.1.2	Bias	3
2.1.3	Parameters	4
2.1.4	Events	4
2.2	Compared Parameters	5
2.3	Aspect	6
2.4	Star Slots	9
2.4.1	Slot 3	9
2.4.2	Slot 4	10
2.4.3	Slot 5	11
2.4.4	Slot 6	12
2.4.5	Slot 7	13
2.5	FID Slots	14
2.5.1	Slot 0	14
2.5.2	Slot 1	15
2.5.3	Slot 2	16
A	Summary	17
A.1	Status	17
A.2	Comments	17

1 Front

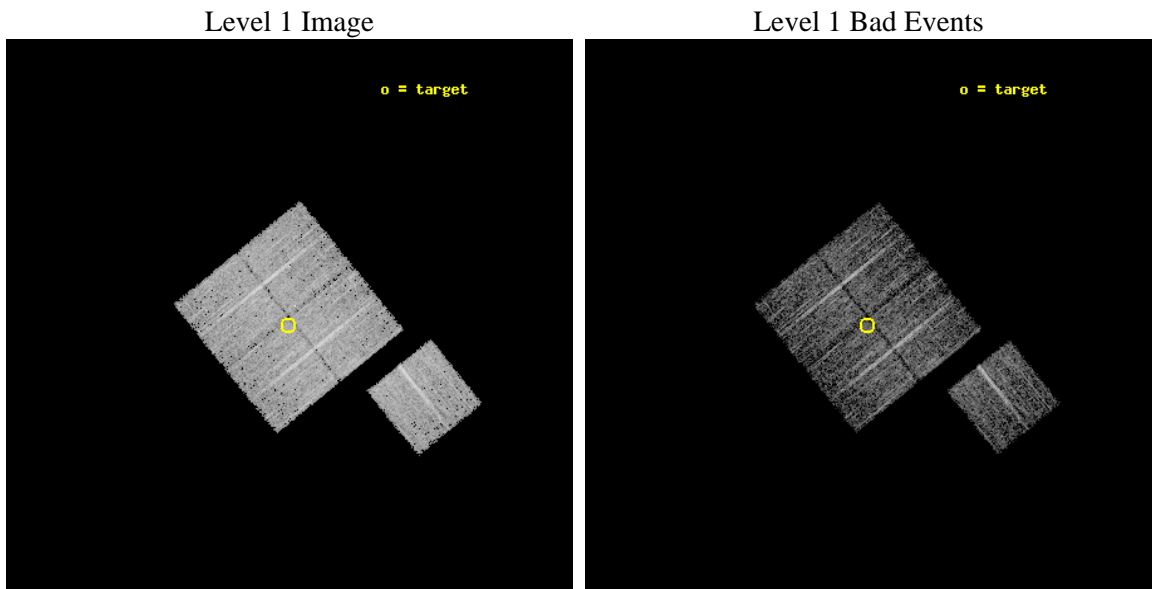
seq_num	900323	Sequence number
obs_id	4280	Observation id
title	A CHANDRA WIDE-FIELD SURVEY TO MAP THE COSMIC WEB AND INVESTIGATE THE EVOLUTION OF NUCLEAR ACCRETION	Proposal title
observer	Dr. Christine Jones	Principal investigator
object	SS58	Source name
dtcycle	0	
cycle	P	events from which exps? Prim/Second/Both
ra_targ	217.17418	Observer's specified target RA [deg]
dec_targ	32.438448	Observer's specified target Dec [deg]
ra_nom	217.17153692216	Nominal RA [deg]
dec_nom	32.442492561516	Nominal Dec [deg]
roll_nom	141.01010452561	Nominal Roll [deg]
revision	3	Processing version of data
ontime	4916.5590203106	Sum of GTIs [s]
livetime	4852.3205571922	Livetime [s]
ontime0	4919.6999905109	Sum of GTIs [s]
ontime1	4916.559020251	Sum of GTIs [s]
ontime2	4913.4180301428	Sum of GTIs [s]
ontime3	4916.5590203106	Sum of GTIs [s]
ontime6	4919.6999905109	Sum of GTIs [s]
l2events	16452	Number of level 2 events



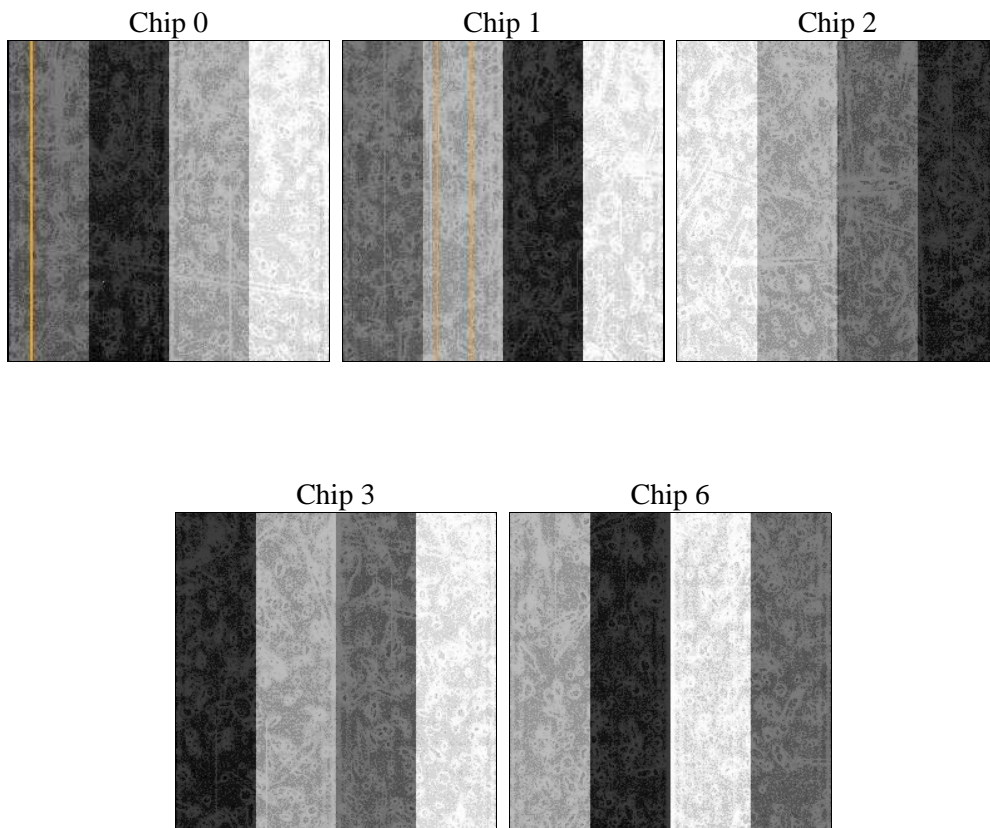
2 OBI

2.1 OBI

2.1.1 Images



2.1.2 Bias



2.1.3 Parameters

obi_num	1	Obi number	sched_exp_time	4800.000000	[s] Scheduled observation exposure time
ascdsver	8.4.5	Processing system revision	ontime	4916.5590203106	Sum of GTIs [s]
caldsver	4.5.2	 	ontime0	4919.6999905109	Sum of GTIs [s]
date	2012-10-26T00:16:08	Date and time of file creation	ontime1	4916.559020251	Sum of GTIs [s]
revision	3	Processing version of data	ontime2	4913.4180301428	Sum of GTIs [s]
			ontime3	4916.5590203106	Sum of GTIs [s]
			ontime6	4919.6999905109	Sum of GTIs [s]
			l1events	155858	Number of level 1 events

2.1.4 Events

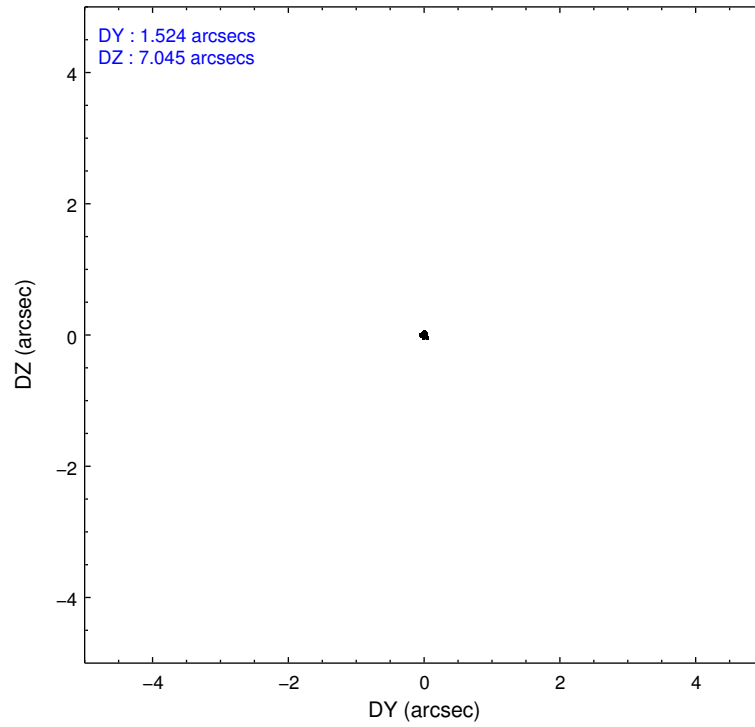
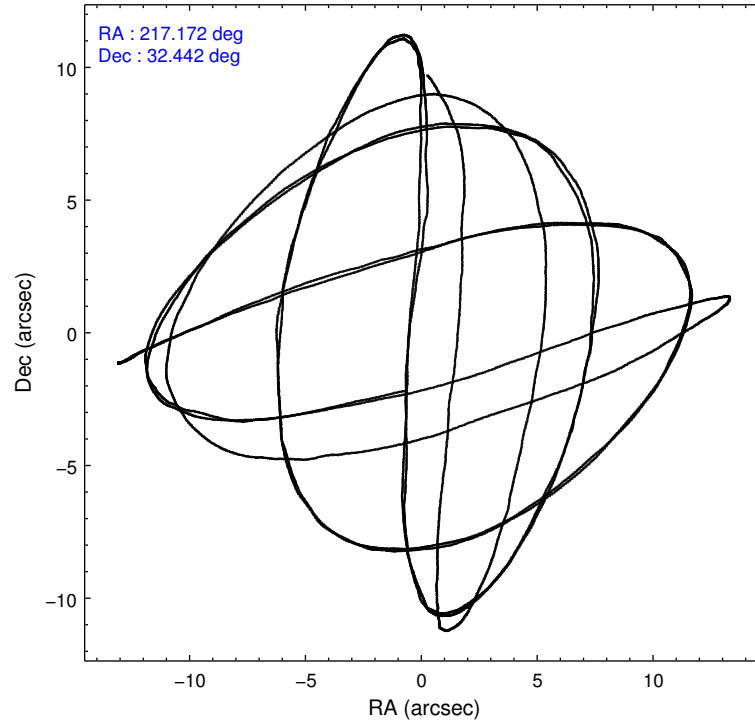
	ccd 0	ccd 1	ccd 2	ccd 3	ccd 6
level 1 events	30201	31018	33010	31138	30491
rejected events	26118	26850	29354	27564	26938
rejected %	86%	86%	88%	88%	88%

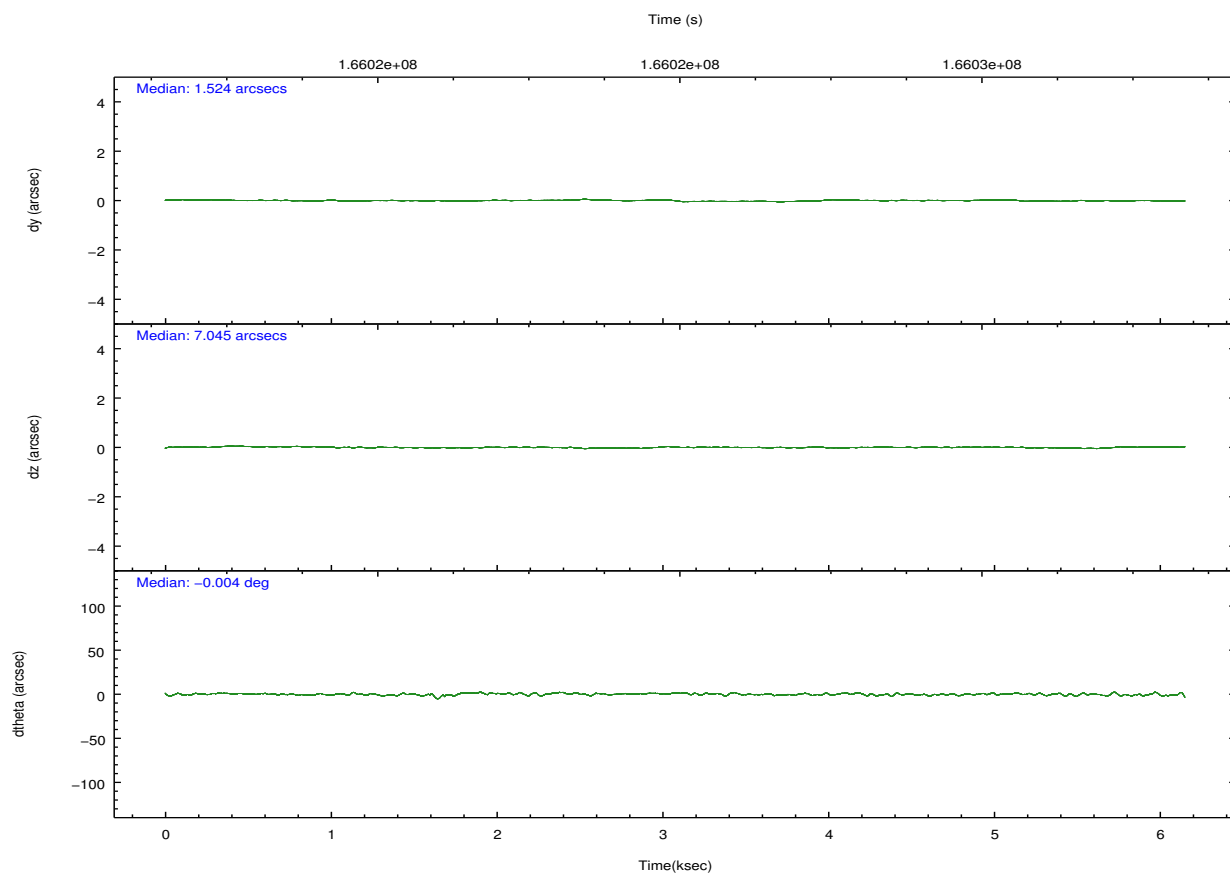
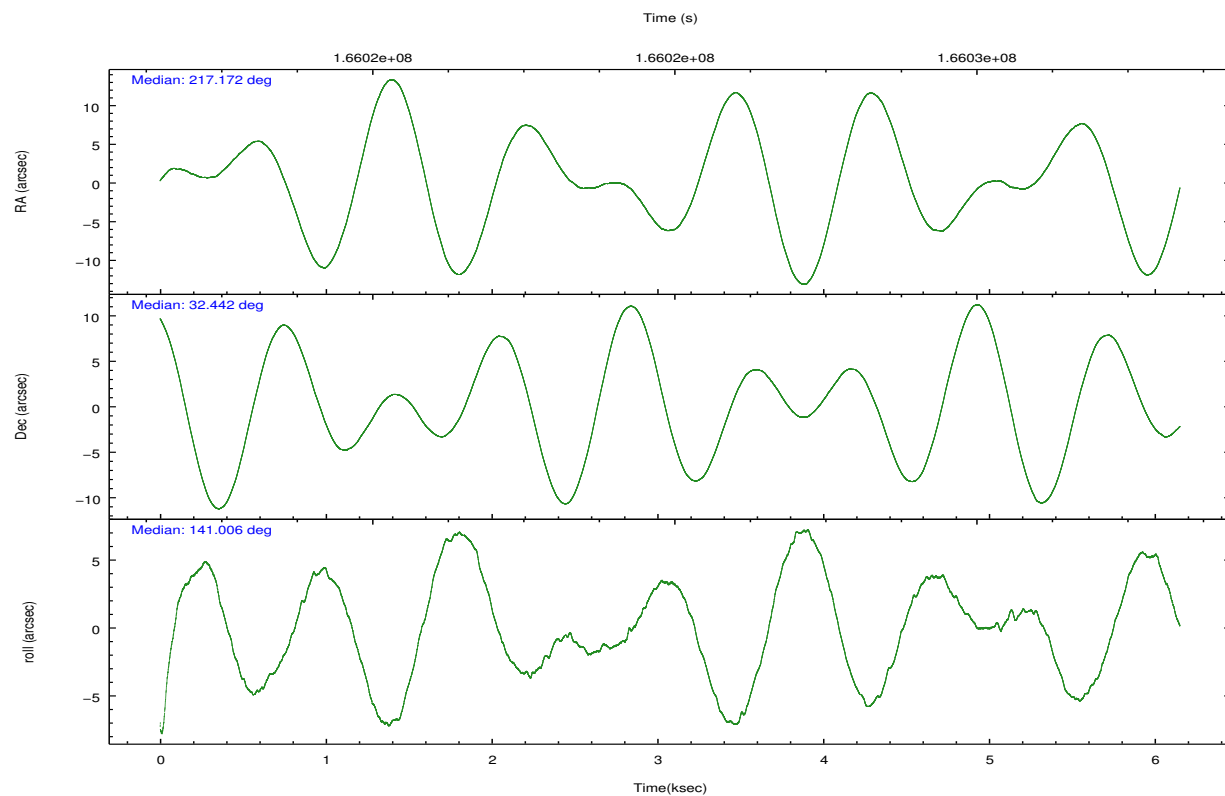
	ccd 0	ccd 1	ccd 2	ccd 3	ccd 6
grade 0 events	1968	1728	1661	1540	1395
	6%	5%	5%	4%	4%
grade 1 events	19	17	19	17	11
	0%	0%	0%	0%	0%
grade 2 events	778	863	719	647	738
	2%	2%	2%	2%	2%
grade 3 events	388	421	328	366	362
	1%	1%	0%	1%	1%
grade 4 events	355	391	340	390	310
	1%	1%	1%	1%	1%
grade 5 events	1229	1346	1150	1410	1424
	4%	4%	3%	4%	4%
grade 6 events	599	771	609	634	750
	1%	2%	1%	2%	2%
grade 7 events	24865	25481	28184	26134	25501
	82%	82%	85%	83%	83%

2.2 Compared Parameters

Parameter	Planned	Actual	Parameter	Planned	Actual
Instrument	ACIS	ACIS	Obspar format version number	7	7
Detector	ACIS-01236	ACIS-01236	Obspar file type	PREDICTED	ACTUAL
Grating	NONE	NONE	Obspar update status	NONE	UPDATED
Data mode	VFAINT	VFAINT	Number of optional ACIS chips dropped	0	0
Observation mode	POINTING	POINTING	On-chip summing requested	N	N
[deg] Pointing RA	217.203662	217.1715369221646	Subarray requested	NONE	NONE
[deg] Pointing Dec	32.438375	32.44249256151588	Alternating exposures requested	N	N
[deg] Pointing Roll	140.784187	141.0101045256148	[s] Primary exposure time	0.000000	3.1
[mm] SIM focus pos	-0.782348	-0.7809083437167272			
[mm] SIM defocus	0	0.001439871863259334			
[mm] SIM translation stage pos	-233.592463	-233.5874344608287			
[mm] SIM translation stage offset	0	-0.005018542100998502			
[s] Observation start time (MET)	166022245.184000	166020699.35153			
Observation start date	2003-04-06T13:16:21	2003-04-06T12:51:39			
[s] Observation end time (MET)	166027045.184000	166027179.4018			
Observation end date	2003-04-06T14:36:21	2003-04-06T14:39:39			
Read mode	TIMED	TIMED			

2.3 Aspect



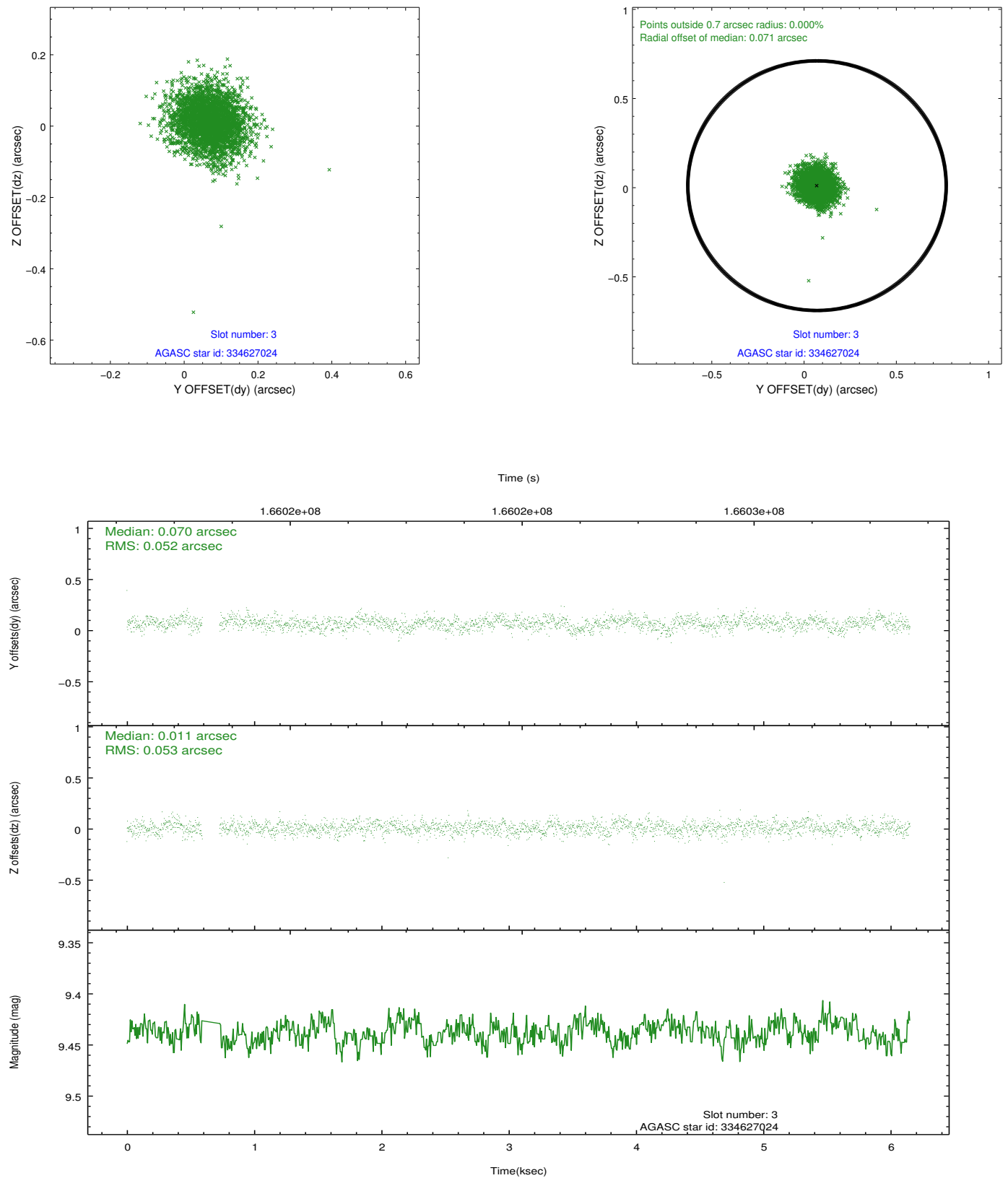


Slot Statistics

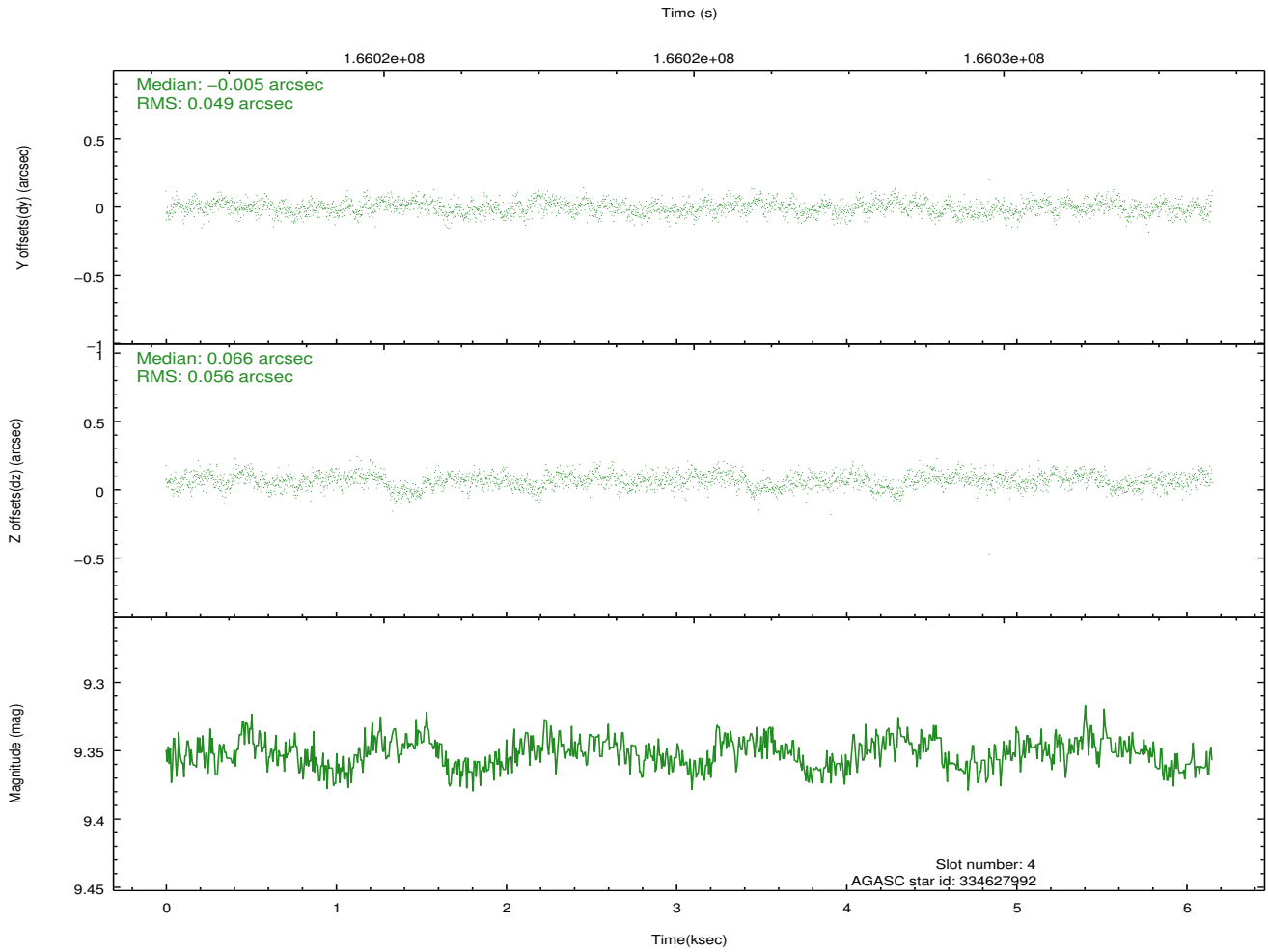
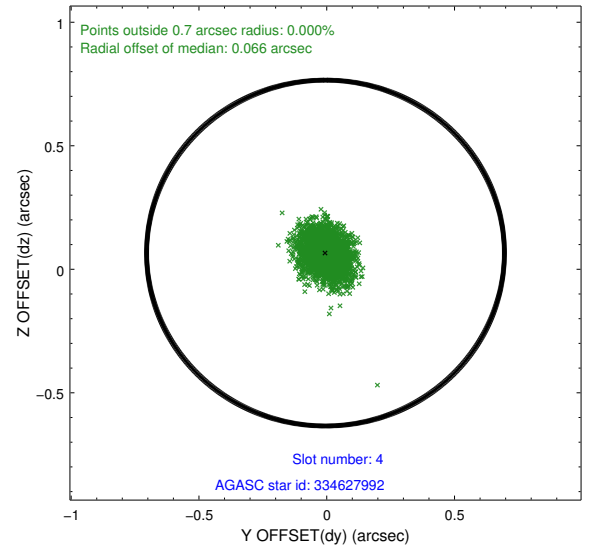
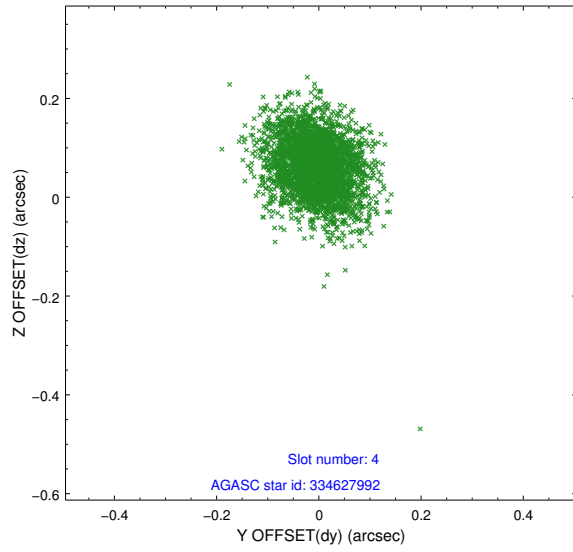
slot	status	id	mag	n_pts	med_dy	med_dz	dr1	dr2	ra	dec	mean_y	mean_z
0	FID	ACIS-I-1	7.25	1501	-0.086	-0.002	0.009	0.015	0.000000	0.000000	938.25	-830.41
1	FID	ACIS-I-2	7.16	1501	-0.054	-0.019	0.006	0.010	0.000000	0.000000	-755.26	-837.40
2	FID	ACIS-I-4	7.18	1501	0.042	0.088	0.006	0.011	0.000000	0.000000	2157.78	1069.04
3	GUIDE	334627024	9.44	2934	0.070	0.011	0.078	0.127	217.318801	32.278221	-635.91	224.60
4	GUIDE	334627992	9.35	3000	-0.005	0.066	0.078	0.128	216.814353	32.274859	547.00	1203.57
5	GUIDE	335021200	8.87	3002	-0.144	0.055	0.063	0.105	216.377257	32.627867	2378.85	1048.62
6	GUIDE	335022112	9.23	3001	-0.003	-0.082	0.082	0.131	216.659296	32.794758	2090.84	44.59
7	GUIDE	334635688	8.45	3001	0.085	-0.048	0.070	0.109	217.014858	31.788165	-1031.33	2178.21

2.4 Star Slots

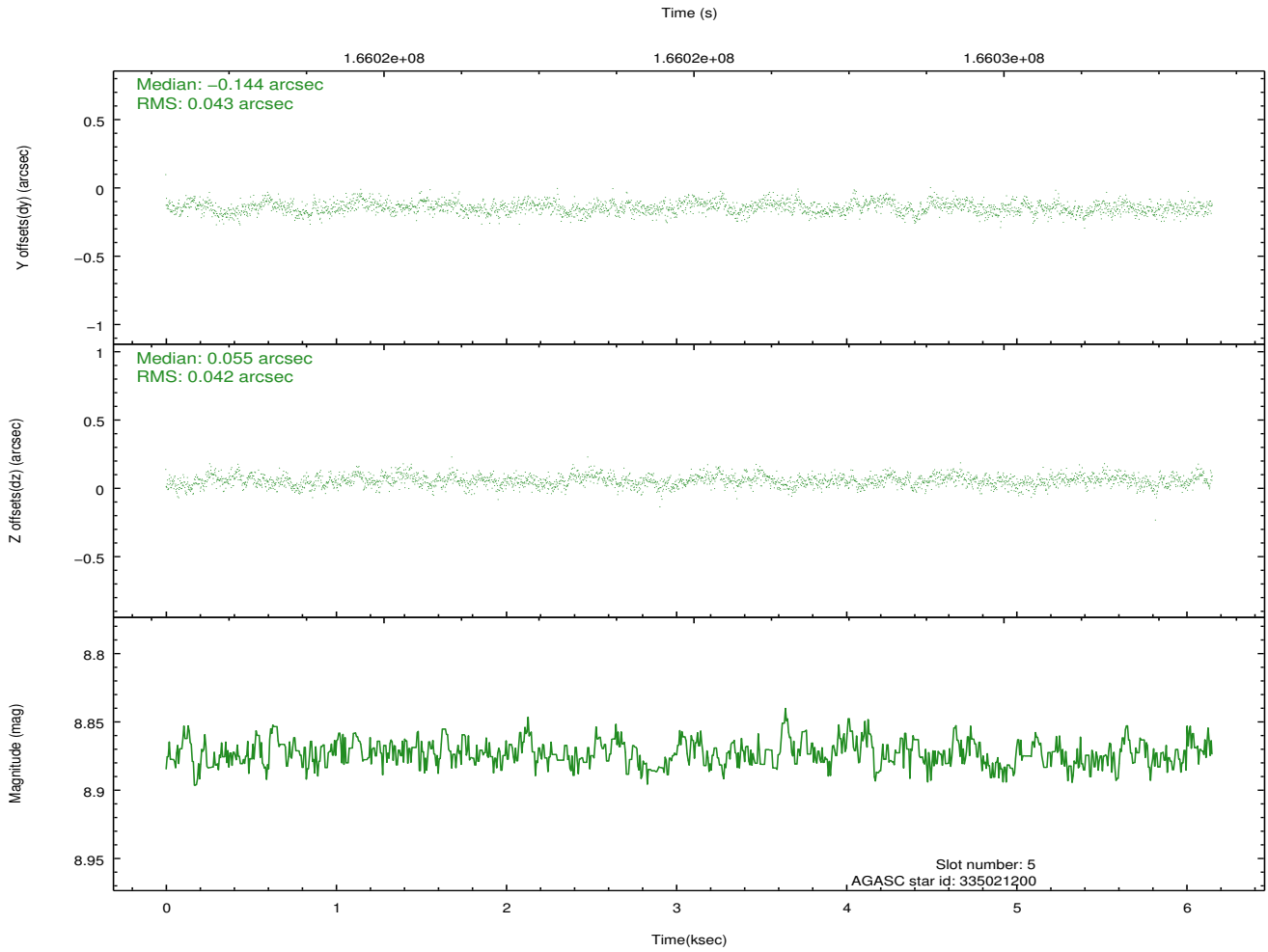
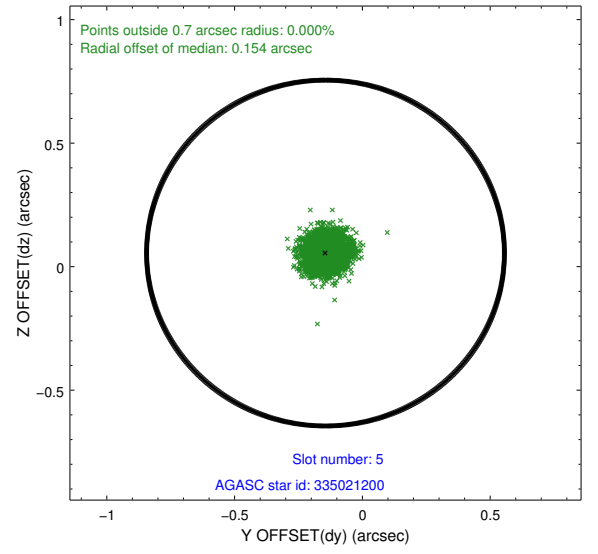
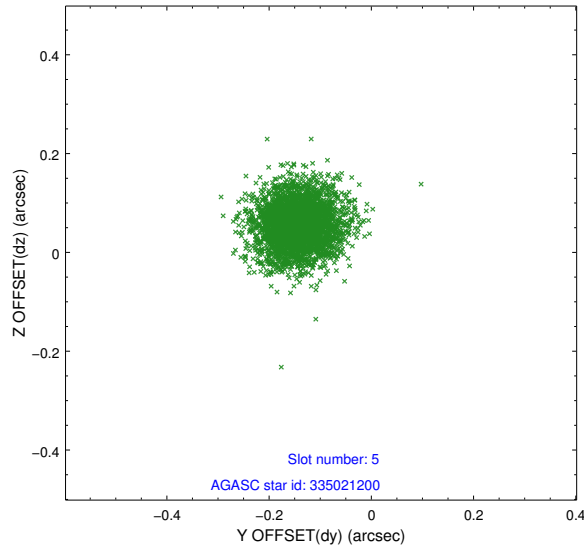
2.4.1 Slot 3



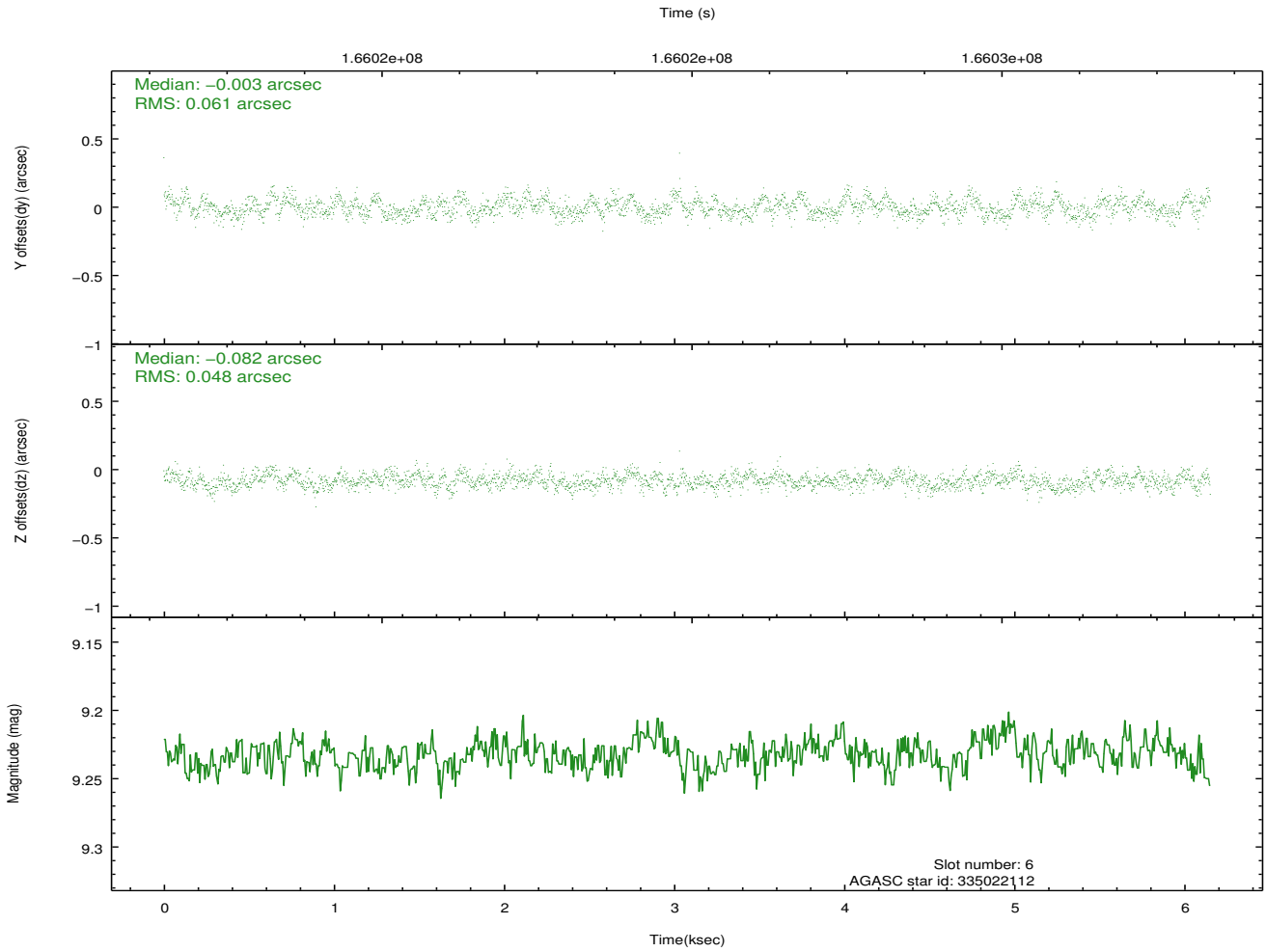
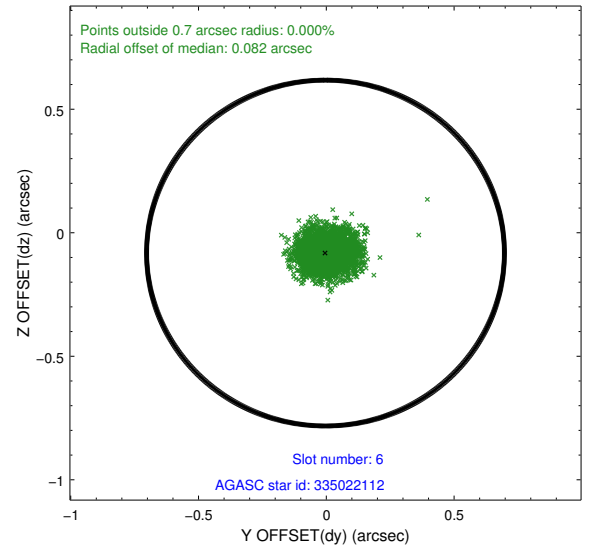
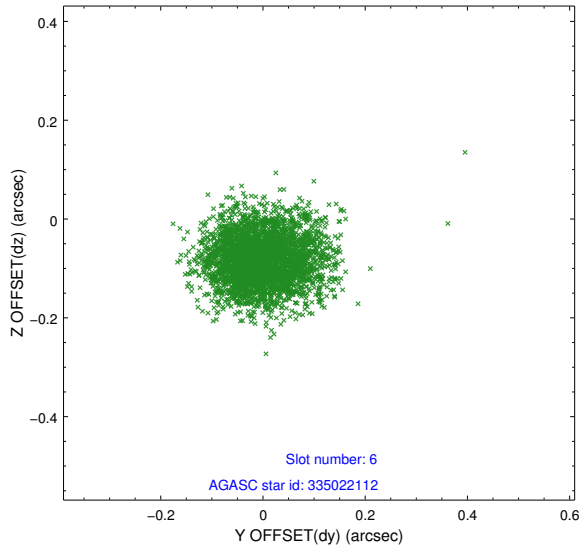
2.4.2 Slot 4



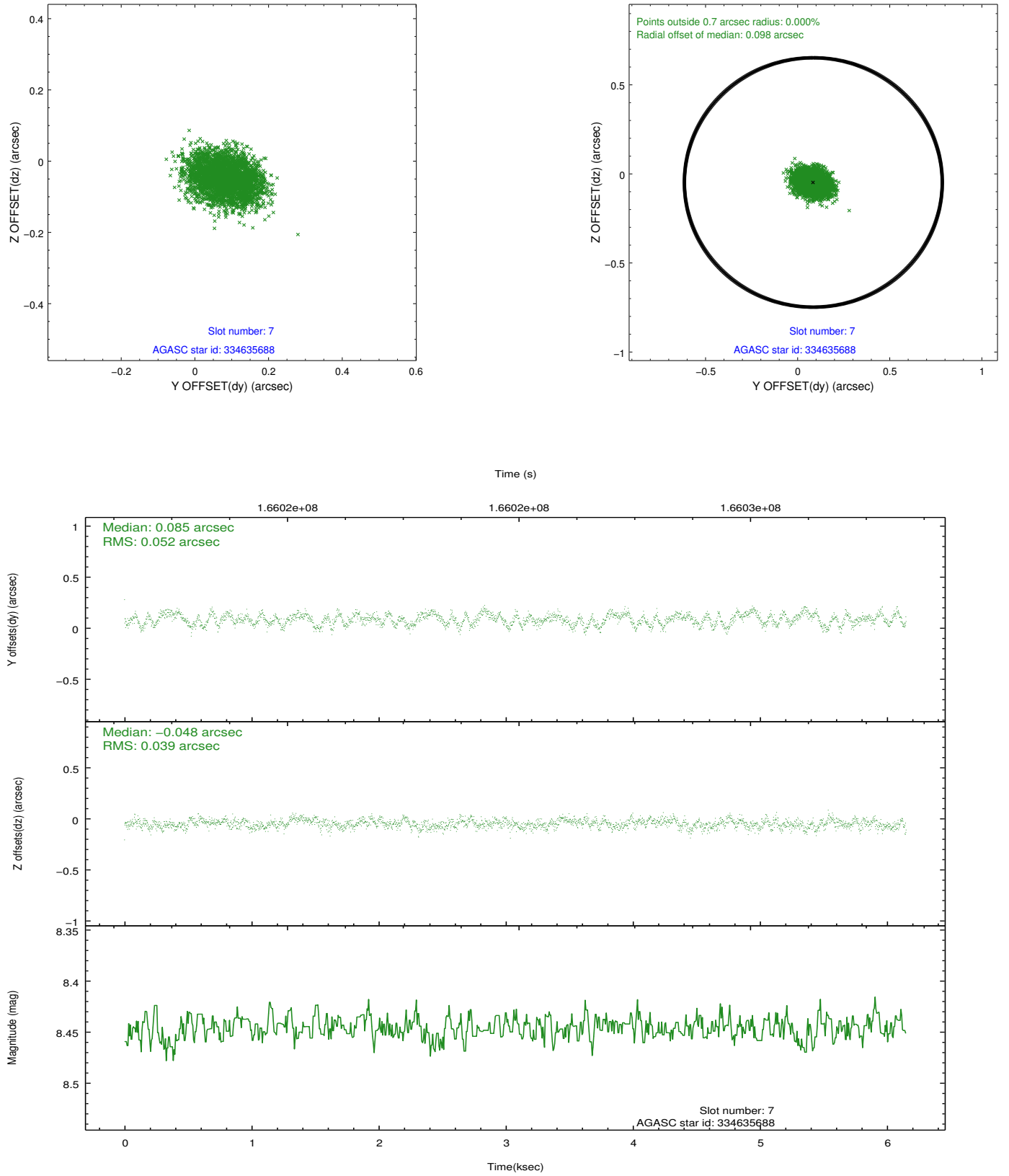
2.4.3 Slot 5



2.4.4 Slot 6

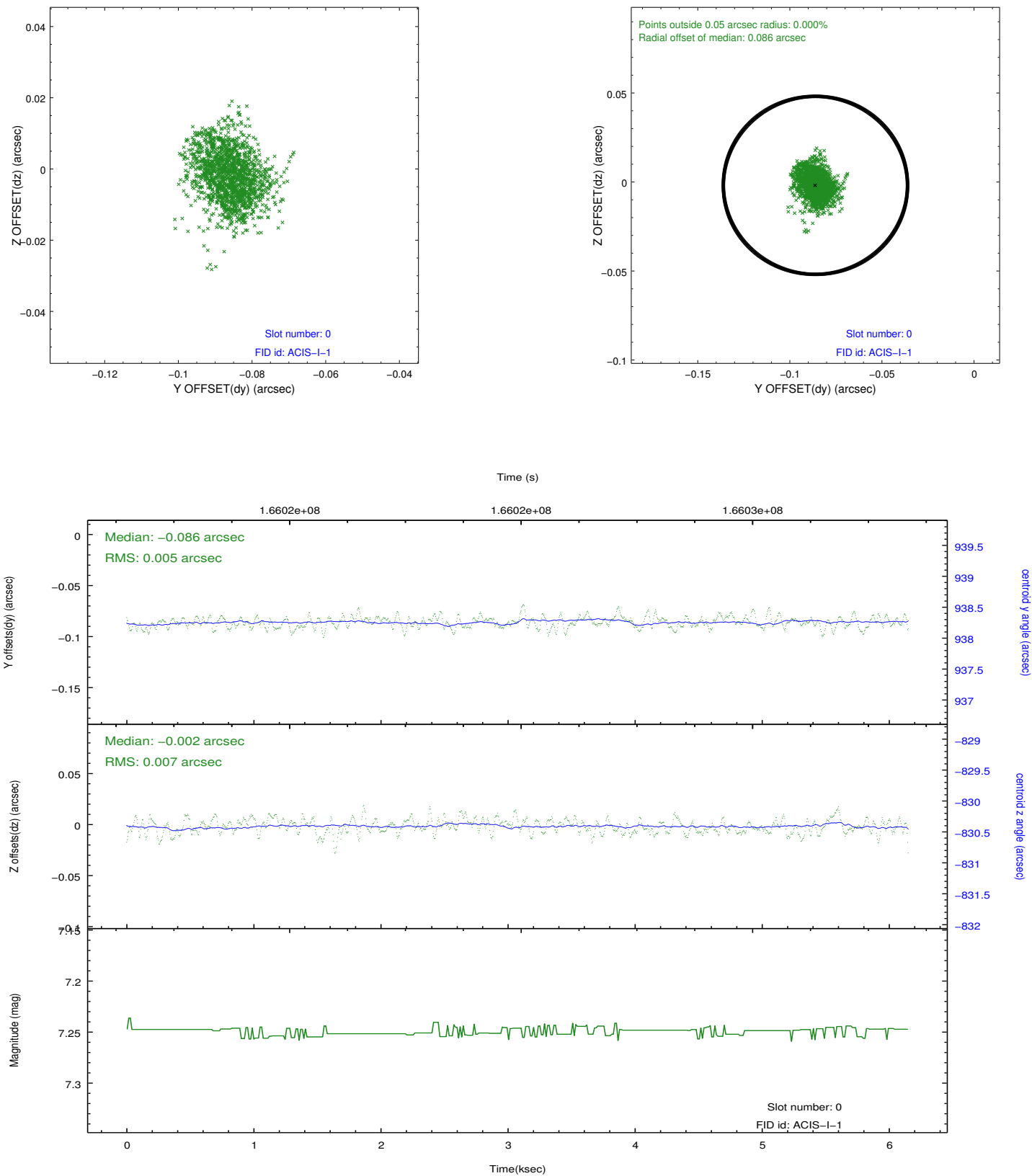


2.4.5 Slot 7

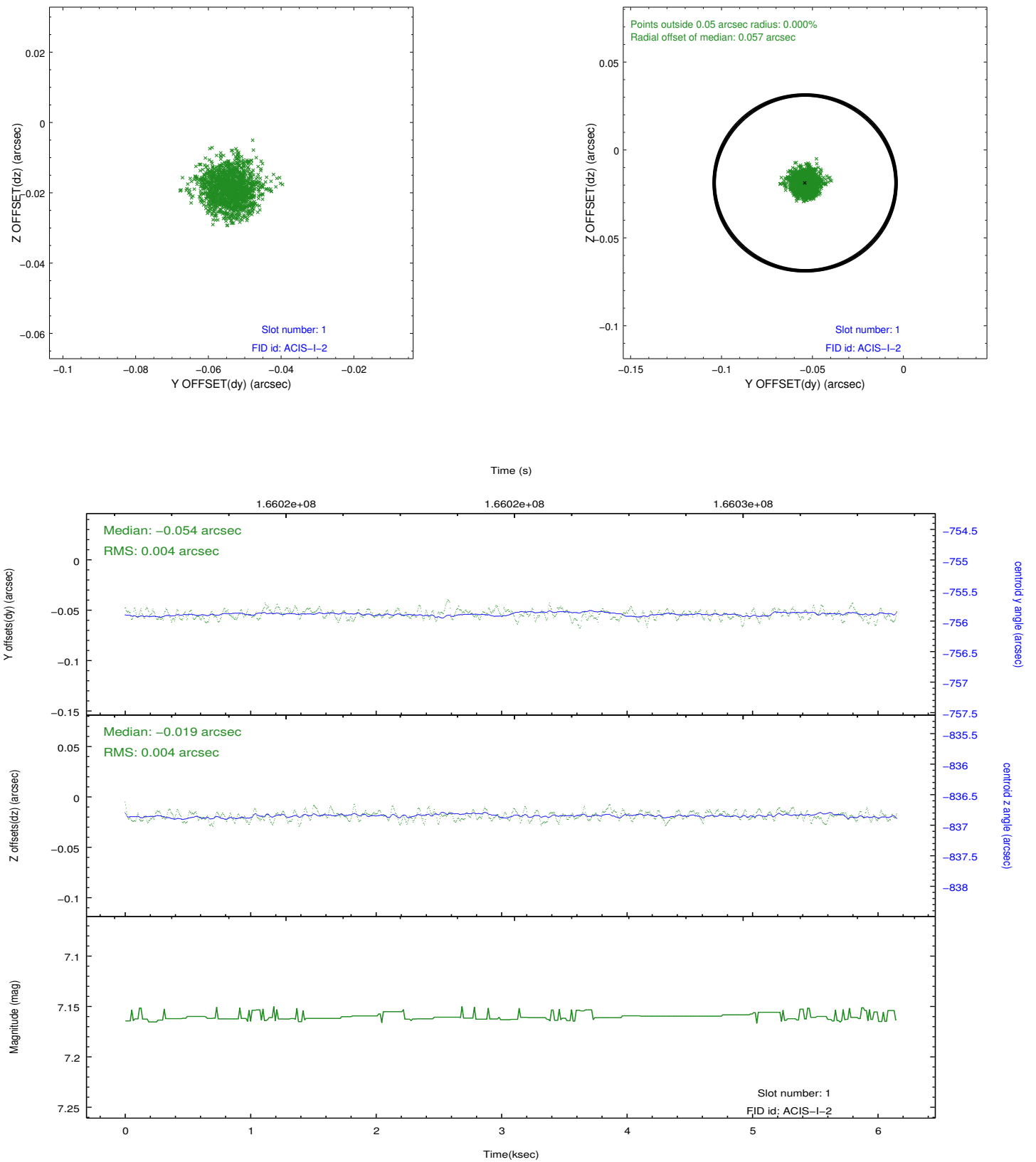


2.5 FID Slots

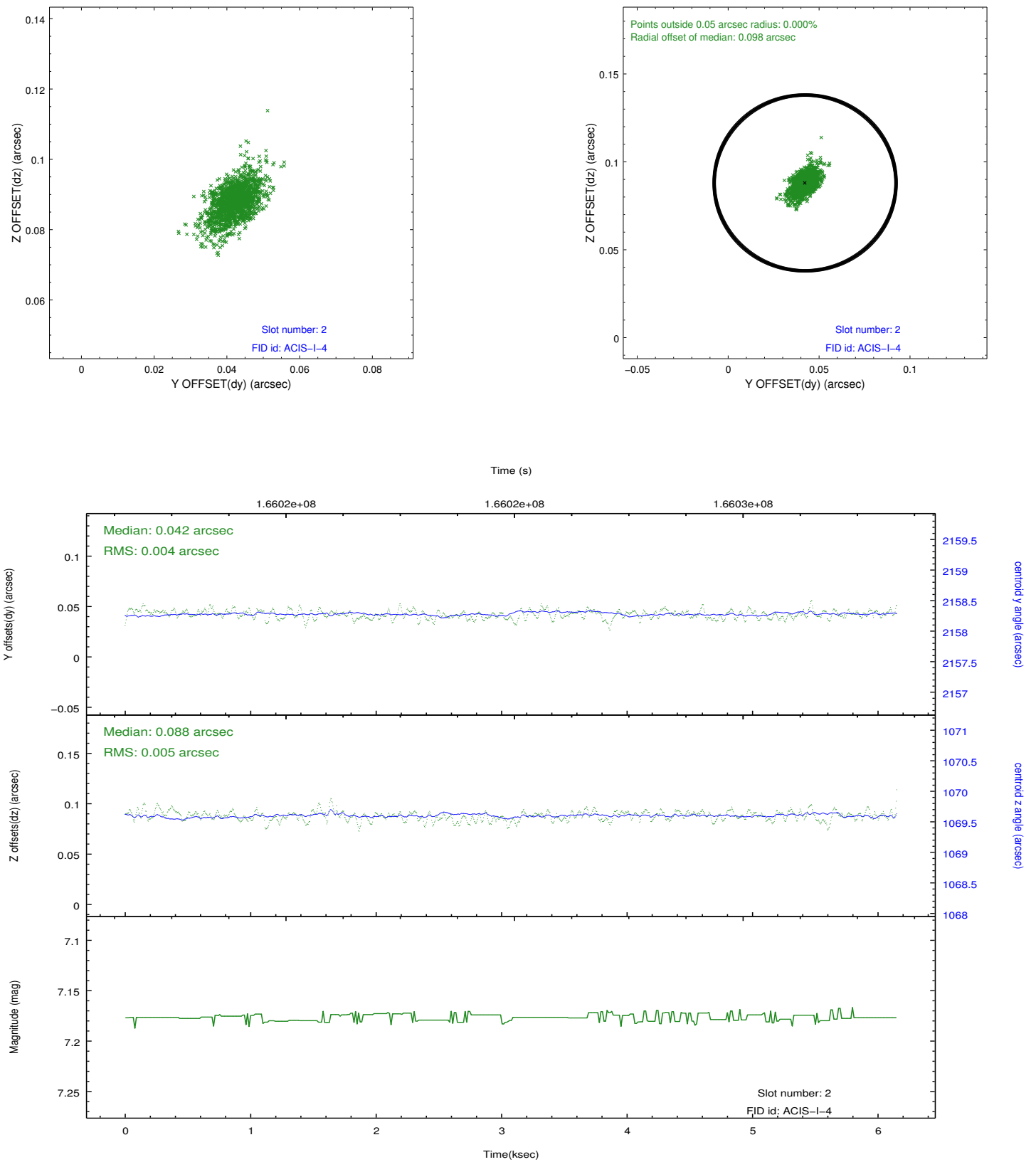
2.5.1 Slot 0



2.5.2 Slot 1



2.5.3 Slot 2



A Summary

A.1 Status

V&V Scientist	Jen Lauer
V&V Date (YYYY-MM-DD)	2012.11.13
V&V Edition	1
V&V Disposition and Status	OK
V&V Charge Time	4.919

A.2 Comments