

V&V Reference Report

L2 ASCDS Version : 7.6.8

Observation 4280 - L2 Version 001
Chandra X-Ray Center

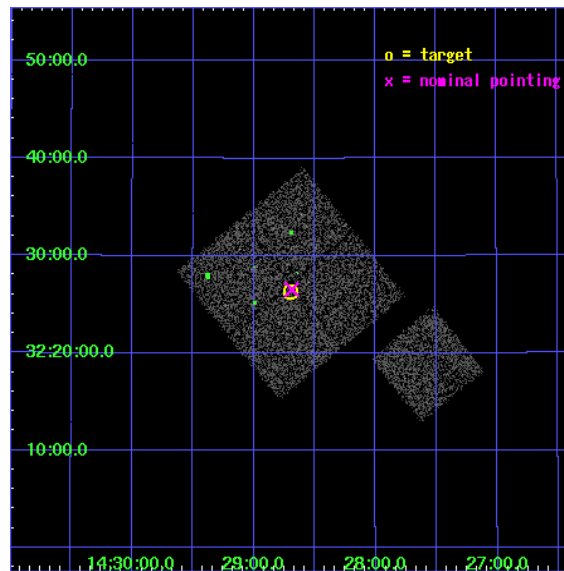
L2 Processing Date : Jul 30 2006

Contents

1	Front	2
2	OBI	3
2.1	OBI	3
2.1.1	Images	3
2.1.2	Bias	3
2.1.3	Parameters	4
2.1.4	Events	4
2.2	Compared Parameters	5
2.3	Aspect	6
2.4	Star Slots	9
2.4.1	Slot 3	9
2.4.2	Slot 4	10
2.4.3	Slot 5	11
2.4.4	Slot 6	12
2.4.5	Slot 7	13
2.5	FID Slots	14
2.5.1	Slot 0	14
2.5.2	Slot 1	15
2.5.3	Slot 2	16
3	Point Sources	17
A	Summary	18
A.1	Status	18
A.2	Comments	18

1 Front

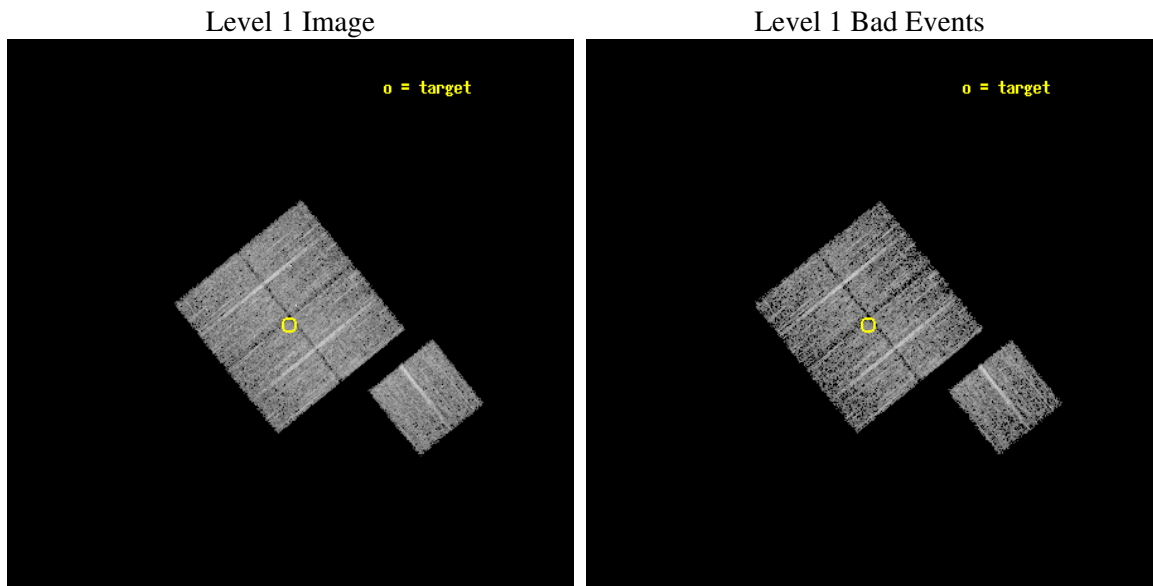
seq_num	900323
obs_id	4280
title	A CHANDRA WIDE-FIELD SURVEY TO MAP THE COSMIC WEB AND INVESTIGATE THE EVOLUTION OF NUCLEAR ACCRETION
observer	Dr. Christine Jones
object	SS58
dtcycle	0
cycle	P
ra_targ	217.17418
dec_targ	32.438448
ra_nom	217.17153692877
dec_nom	32.442492574345
roll_nom	141.01010452088
revision	2
ontime	4916.5590203404
livetime	4852.3205572216
ontime0	4919.6999905407
ontime1	4916.5590202808
ontime2	4913.4180301726
ontime3	4916.5590203404
ontime6	4919.6999905407
l2events	16477



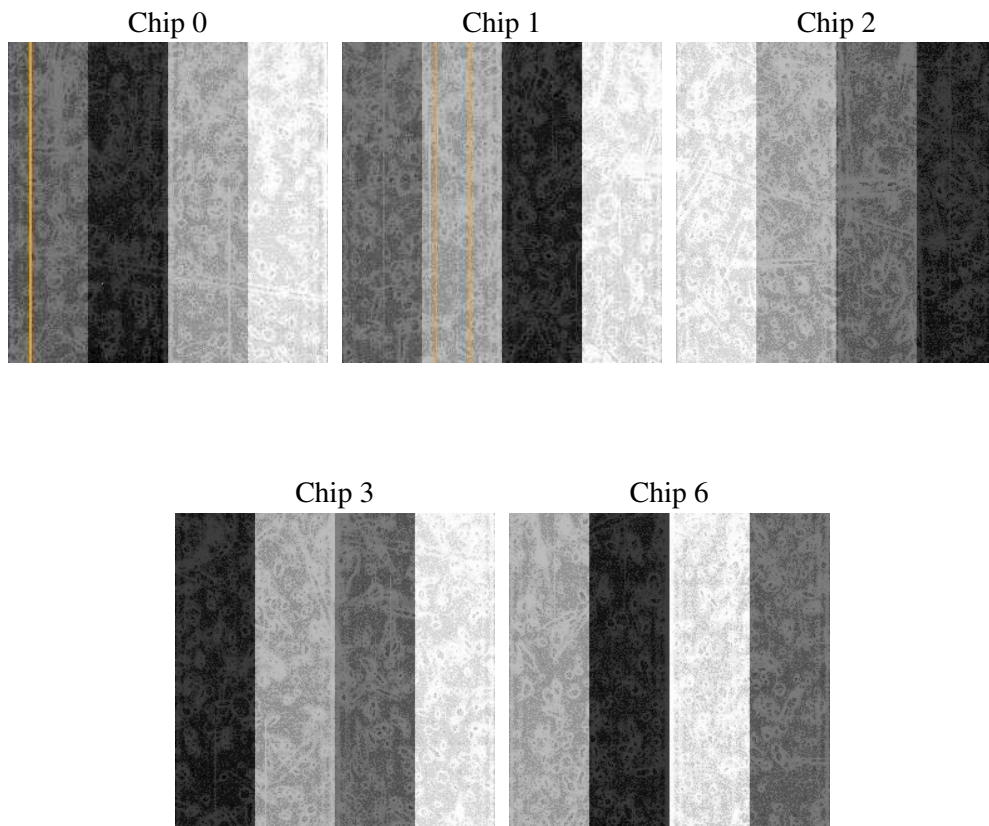
2 OBI

2.1 OBI

2.1.1 Images



2.1.2 Bias



2.1.3 Parameters

obi_num	1
ascdsver	7.6.8
caldbver	3.2.2
date	2006-07-30T07:37:05
revision	2

sched_exp_time	4800.000000
ontime	4921.9542579353
ontime0	4925.0952281356
ontime1	4921.9542379677
ontime2	4918.8132677674
ontime3	4921.9542579353
ontime6	4925.0952281356
llevents	155858

2.1.4 Events

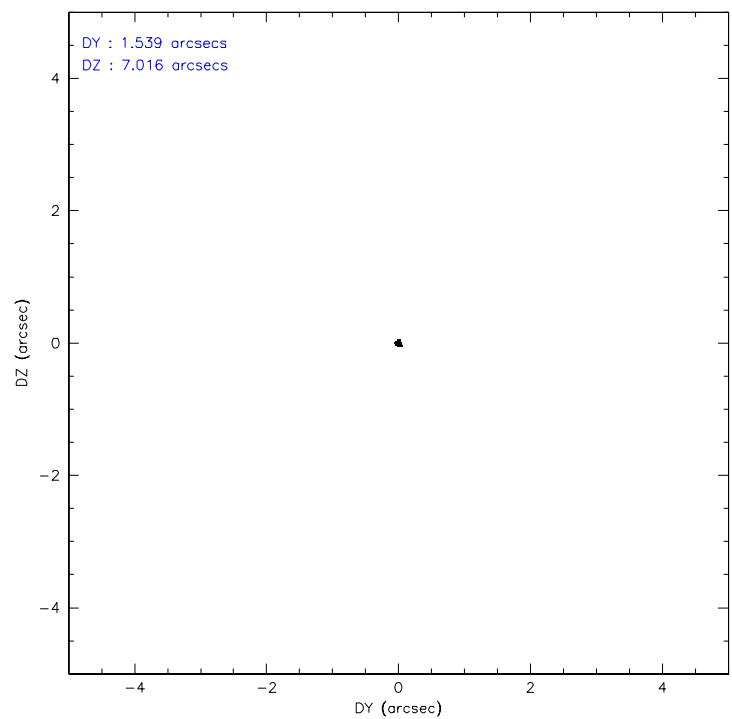
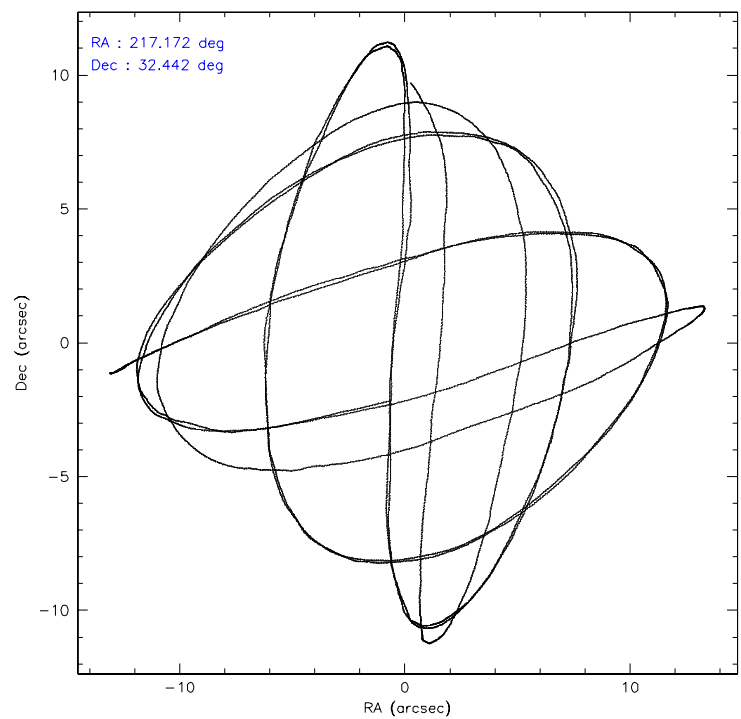
	ccd 0	ccd 1	ccd 2	ccd 3	ccd 6
level 1 events	30201	31018	33010	31138	30491
rejected events	26120	26853	29358	27569	26937
rejected %	86%	86%	88%	88%	88%

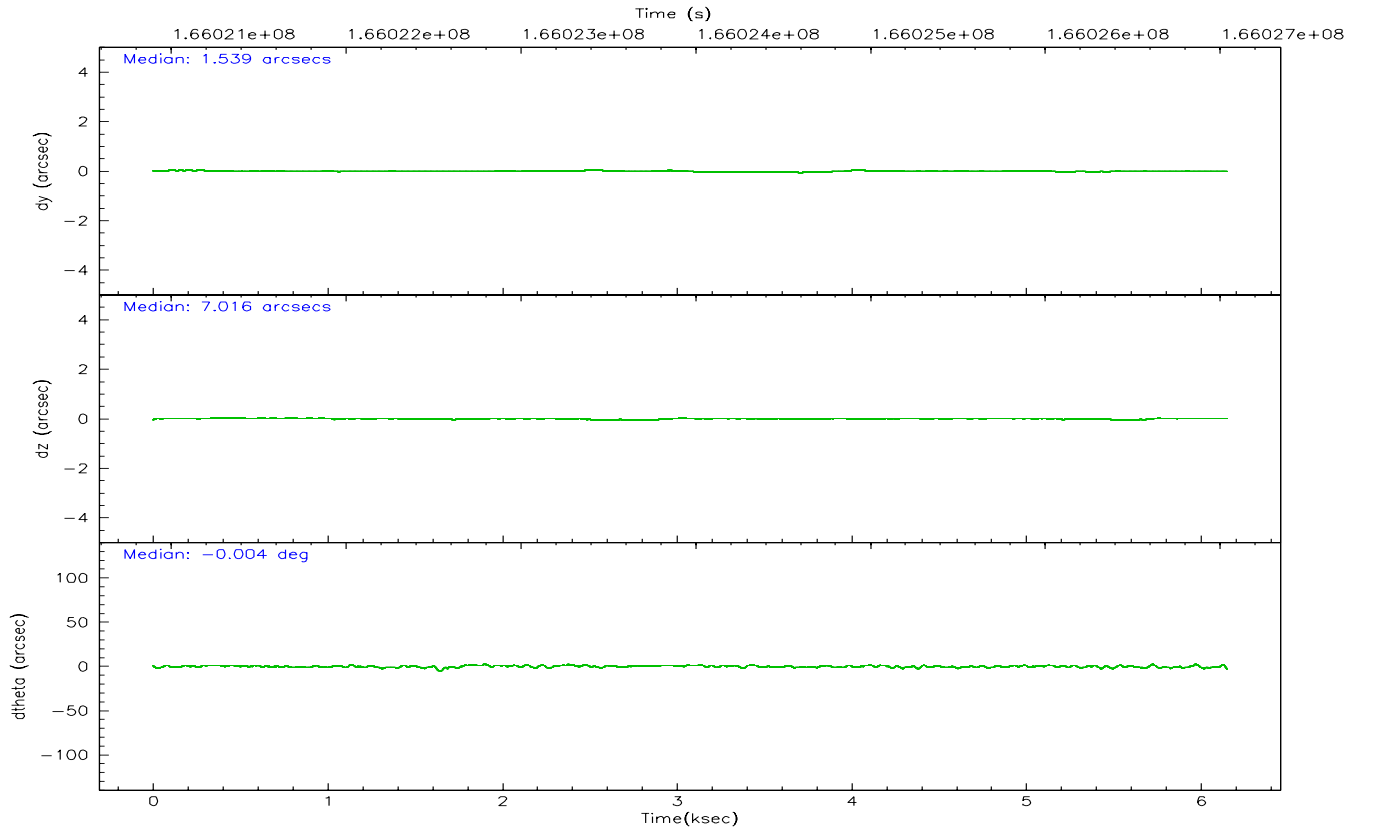
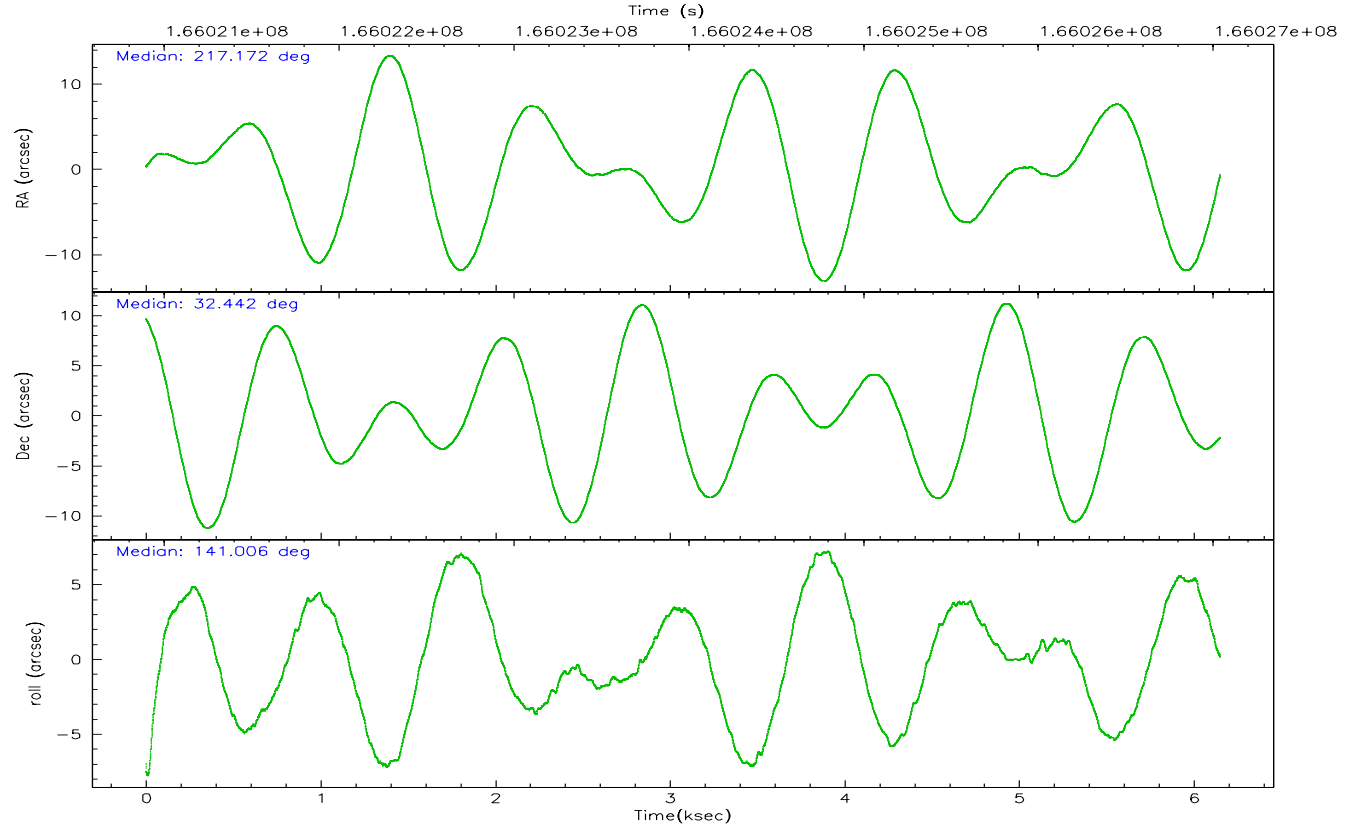
	ccd 0	ccd 1	ccd 2	ccd 3	ccd 6
grade 0 events	1968	1728	1661	1540	1395
	6%	5%	5%	4%	4%
grade 1 events	19	17	19	17	11
	0%	0%	0%	0%	0%
grade 2 events	778	863	719	647	738
	2%	2%	2%	2%	2%
grade 3 events	388	421	328	366	362
	1%	1%	0%	1%	1%
grade 4 events	355	391	340	390	310
	1%	1%	1%	1%	1%
grade 5 events	1229	1346	1148	1410	1424
	4%	4%	3%	4%	4%
grade 6 events	599	771	609	633	750
	1%	2%	1%	2%	2%
grade 7 events	24865	25481	28186	26135	25501
	82%	82%	85%	83%	83%

2.2 Compared Parameters

Parameter	Planned	Actual	Parameter	Planned	Actual
Instrument	ACIS	ACIS	Obspar format version number	6	6
Detector	ACIS-01236	ACIS-01236	Obspar file type	PREDICTED	ACTUAL
Grating	NONE	NONE	Obspar update status	NONE	UPDATED
Data mode	VFAINT	VFAINT	On-chip summing requested	N	N
Observation mode	POINTING	POINTING	Subarray requested	NONE	NONE
Pointing RA	217.203662	217.1715369287724	Alternating exposures requested	N	N
Pointing Dec	32.438375	32.44249257434506	Primary exposure time	0.000000	3.1
Pointing Roll	140.784187	141.0101045208817			
SIM focus pos (mm)	-0.782348	-0.7809083437167272			
SIM defocus (mm)	0	0.001439871863259334			
SIM translation stage pos (mm)	-233.592463	-233.5874344608287			
SIM translation stage offset (mm)	0	-0.005018542100998502			
Observation start time	166022245.184000	166020699.35153			
Observation start date	2003-04-06T13:16:21	2003-04-06T12:51:39			
Observation end time	166027045.184000	166027179.4018			
Observation end date	2003-04-06T14:36:21	2003-04-06T14:39:39			
Read mode	TIMED	TIMED			

2.3 Aspect



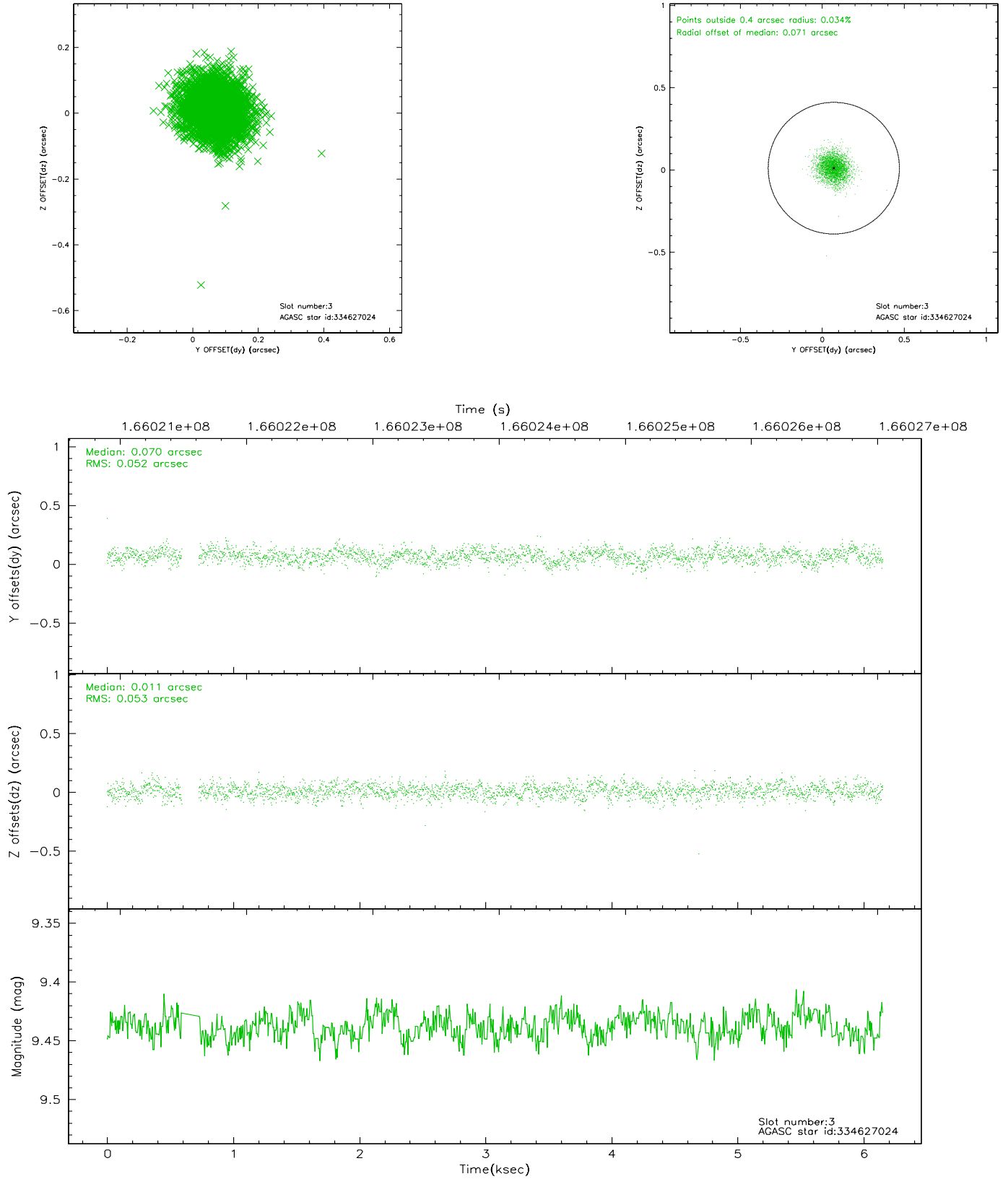


Slot Statistics

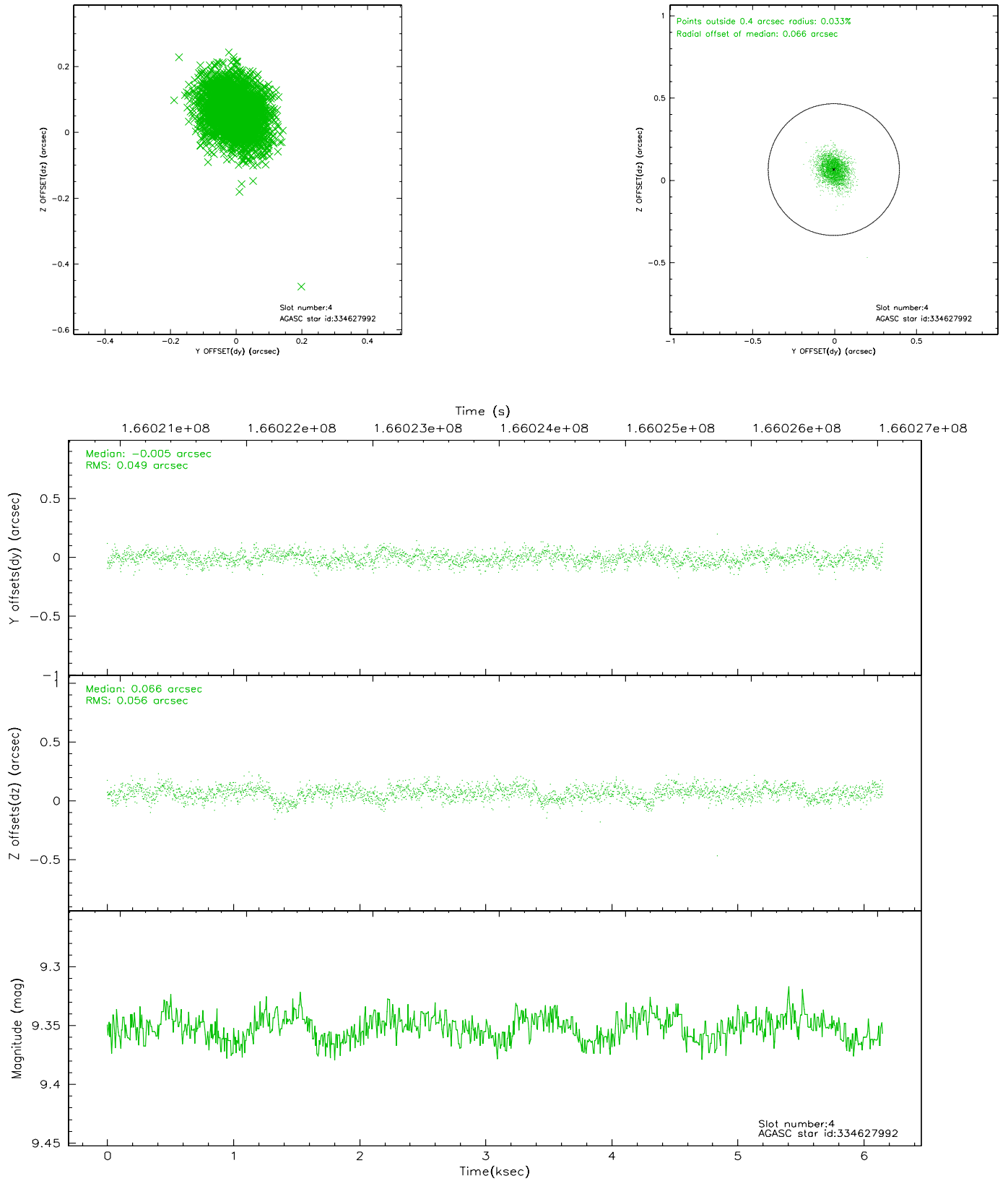
slot	status	id	mag	n_pts	med_dy	med_dz	dr1	dr2	ra	dec	mean_y	mean_z
0	FID	ACIS-I-1	7.25	1501	-0.089	0.010	0.009	0.015	0.000000	0.000000	938.24	-830.37
1	FID	ACIS-I-2	7.16	1501	-0.026	-0.007	0.006	0.009	0.000000	0.000000	-755.25	-837.36
2	FID	ACIS-I-4	7.18	1501	0.017	0.065	0.006	0.010	0.000000	0.000000	2157.73	1069.05
3	GUIDE	334627024	9.44	2934	0.070	0.011	0.078	0.127	217.318801	32.278221	-635.91	224.60
4	GUIDE	334627992	9.35	3000	-0.005	0.066	0.078	0.128	216.814353	32.274859	547.00	1203.57
5	GUIDE	335021200	8.87	3002	-0.144	0.055	0.063	0.105	216.377257	32.627867	2378.85	1048.62
6	GUIDE	335022112	9.23	3001	-0.003	-0.082	0.082	0.131	216.659296	32.794758	2090.84	44.59
7	GUIDE	334635688	8.45	3001	0.085	-0.048	0.070	0.109	217.014858	31.788165	-1031.33	2178.21

2.4 Star Slots

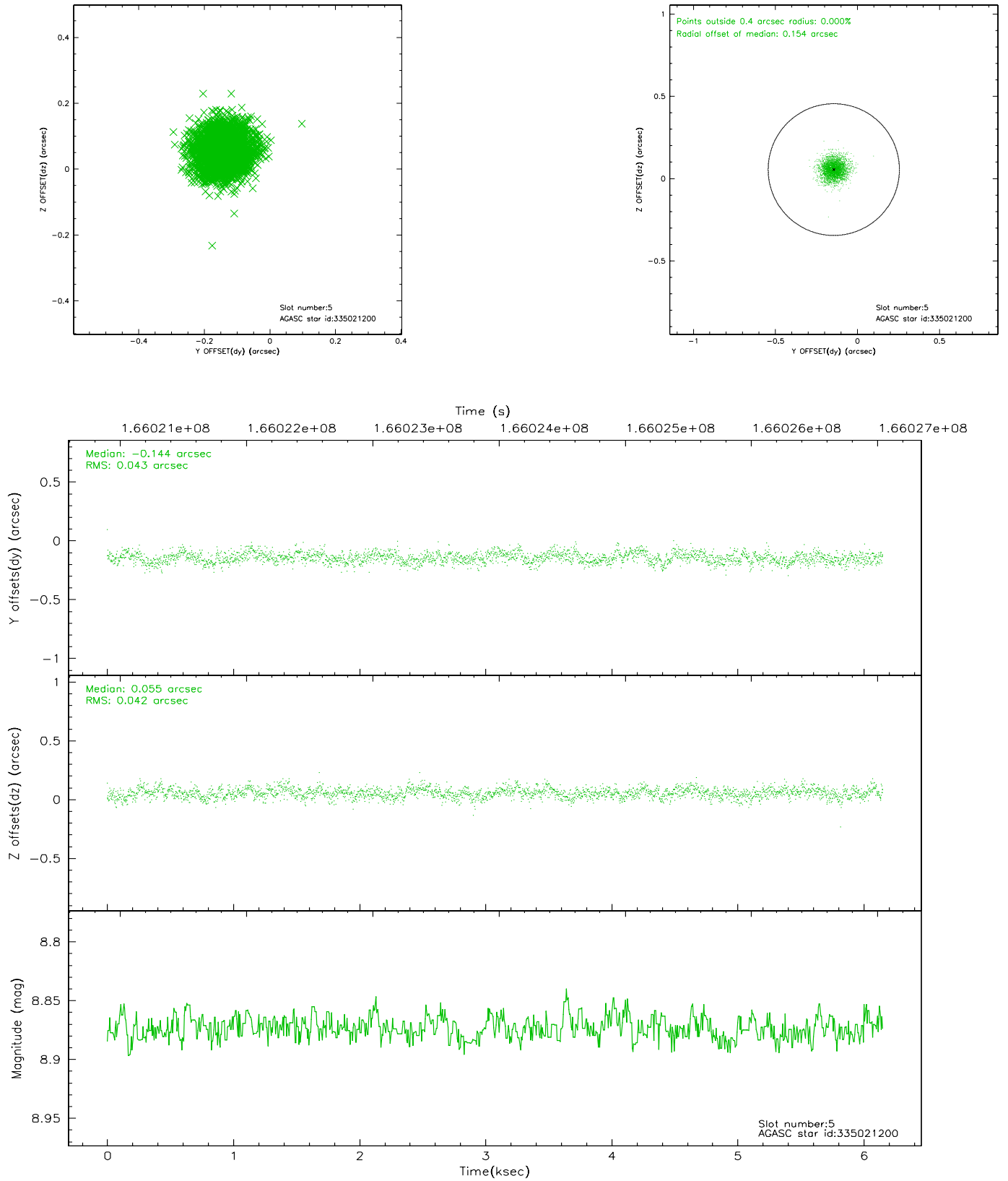
2.4.1 Slot 3



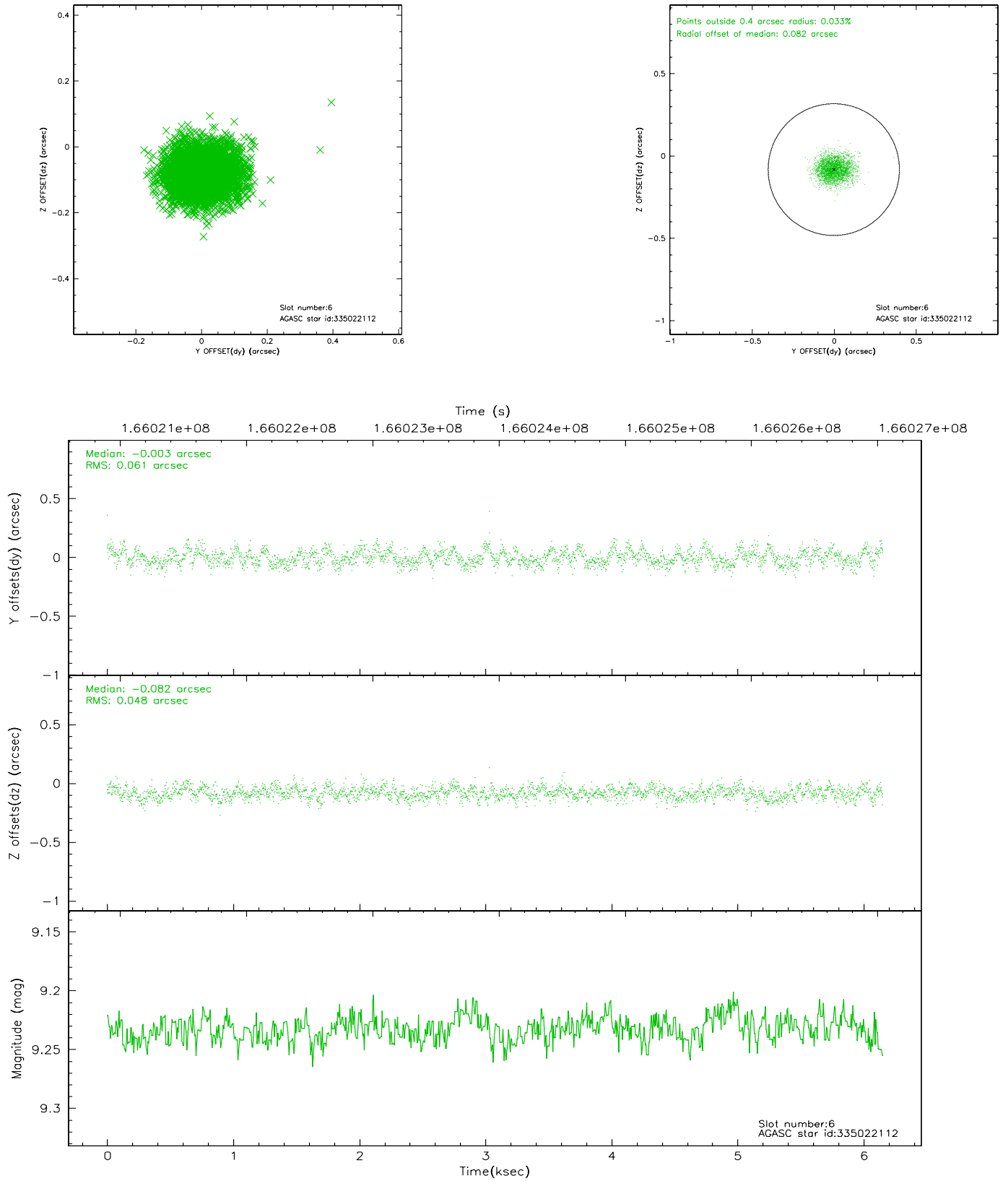
2.4.2 Slot 4



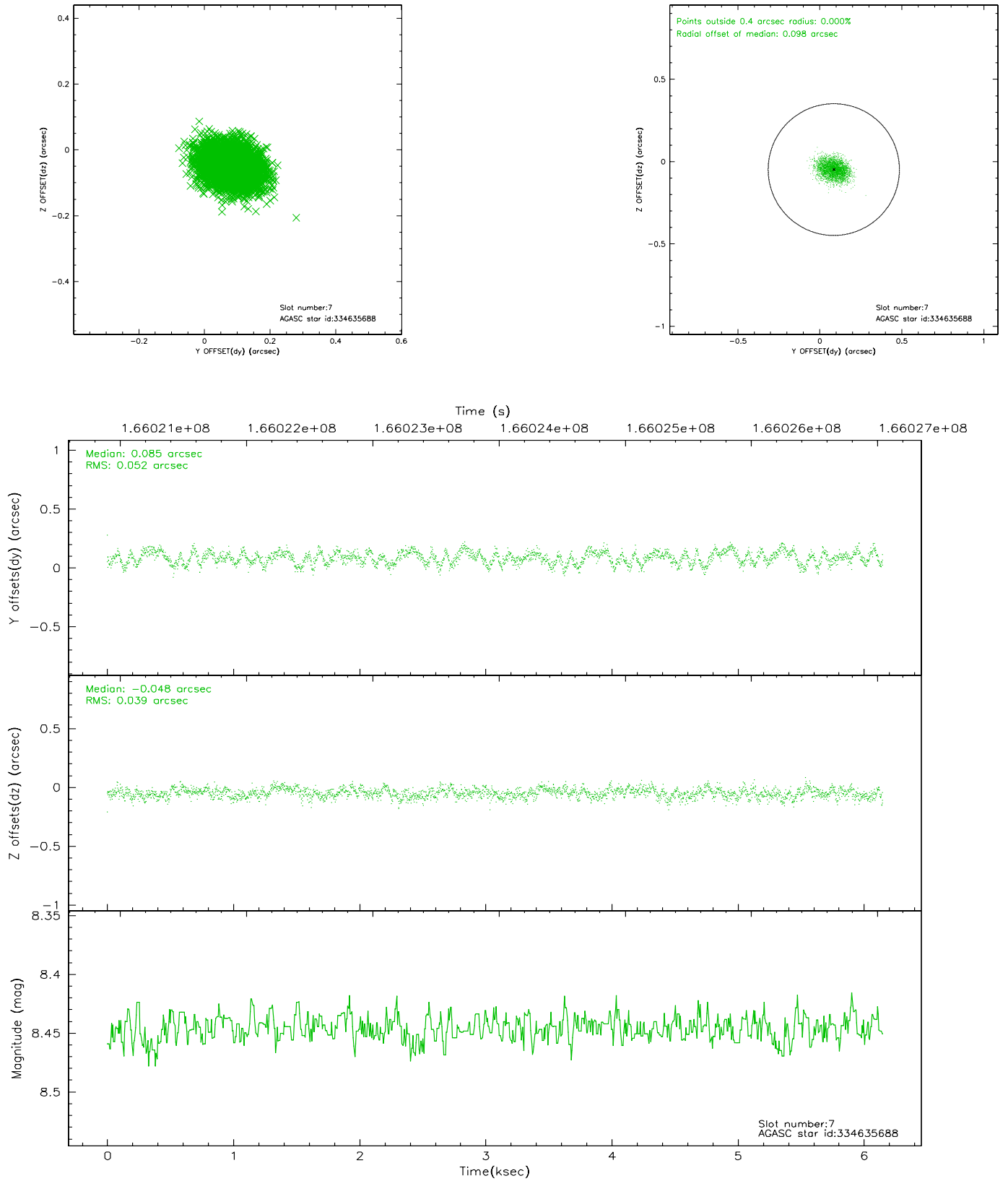
2.4.3 Slot 5



2.4.4 Slot 6

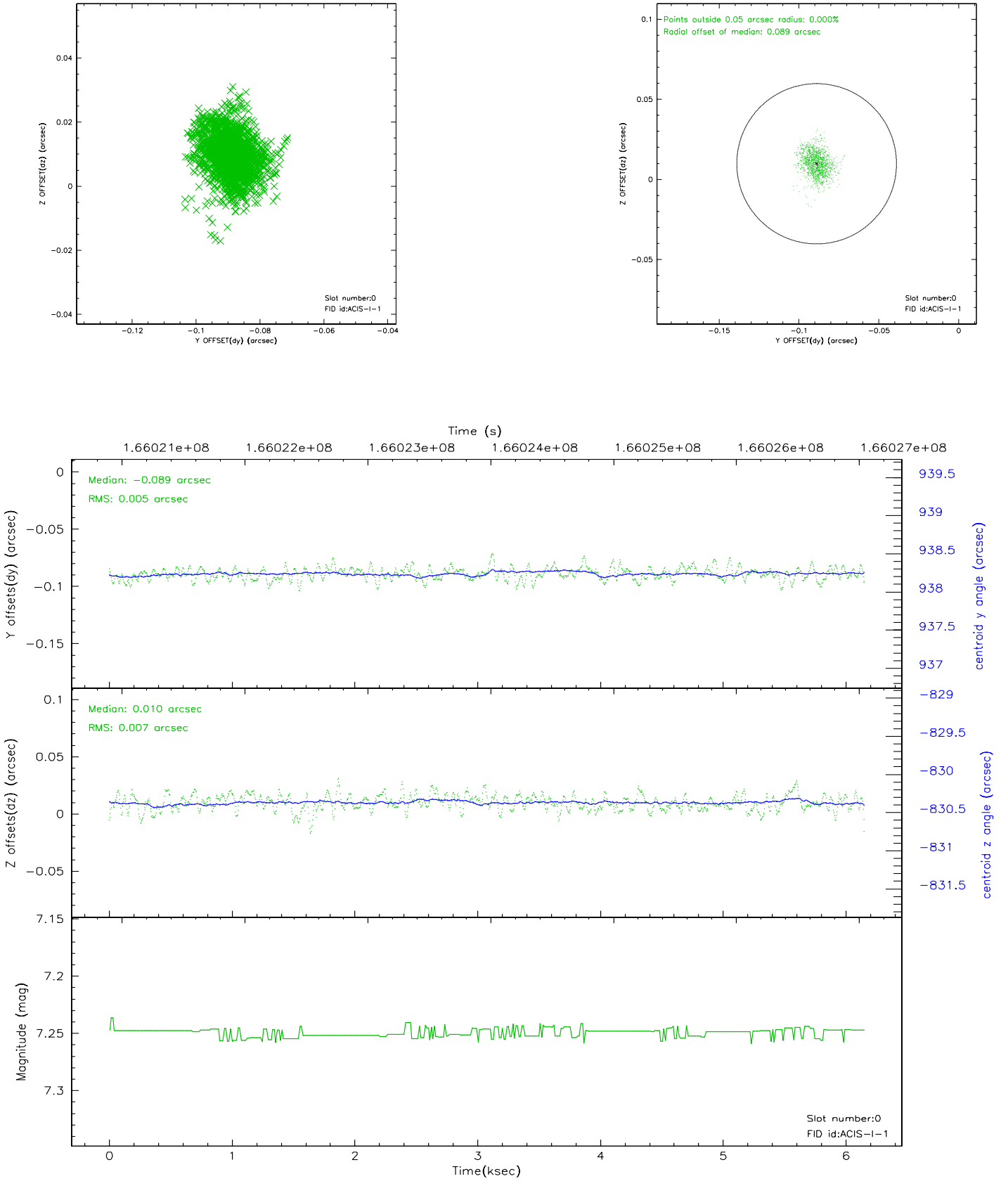


2.4.5 Slot 7

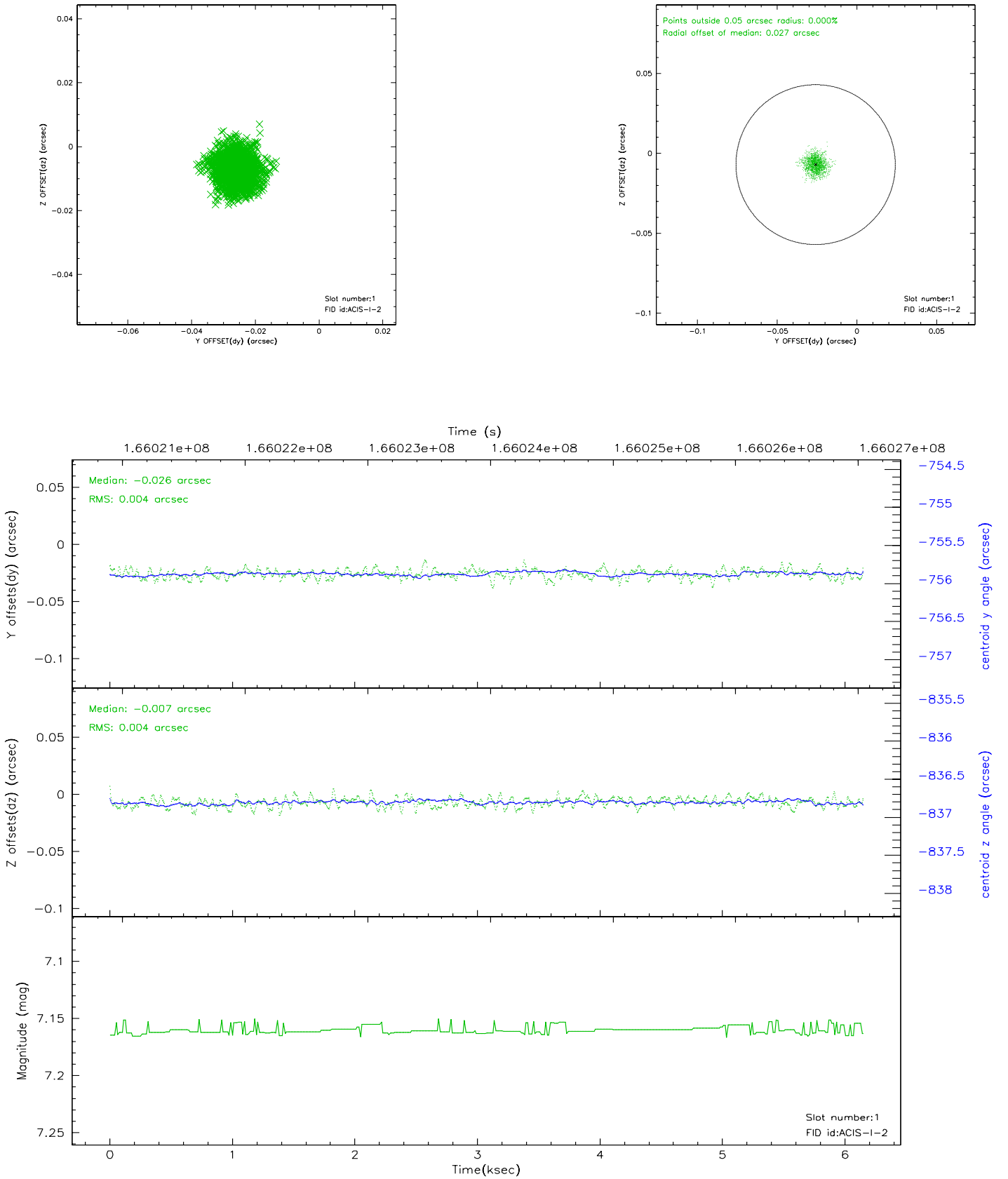


2.5 FID Slots

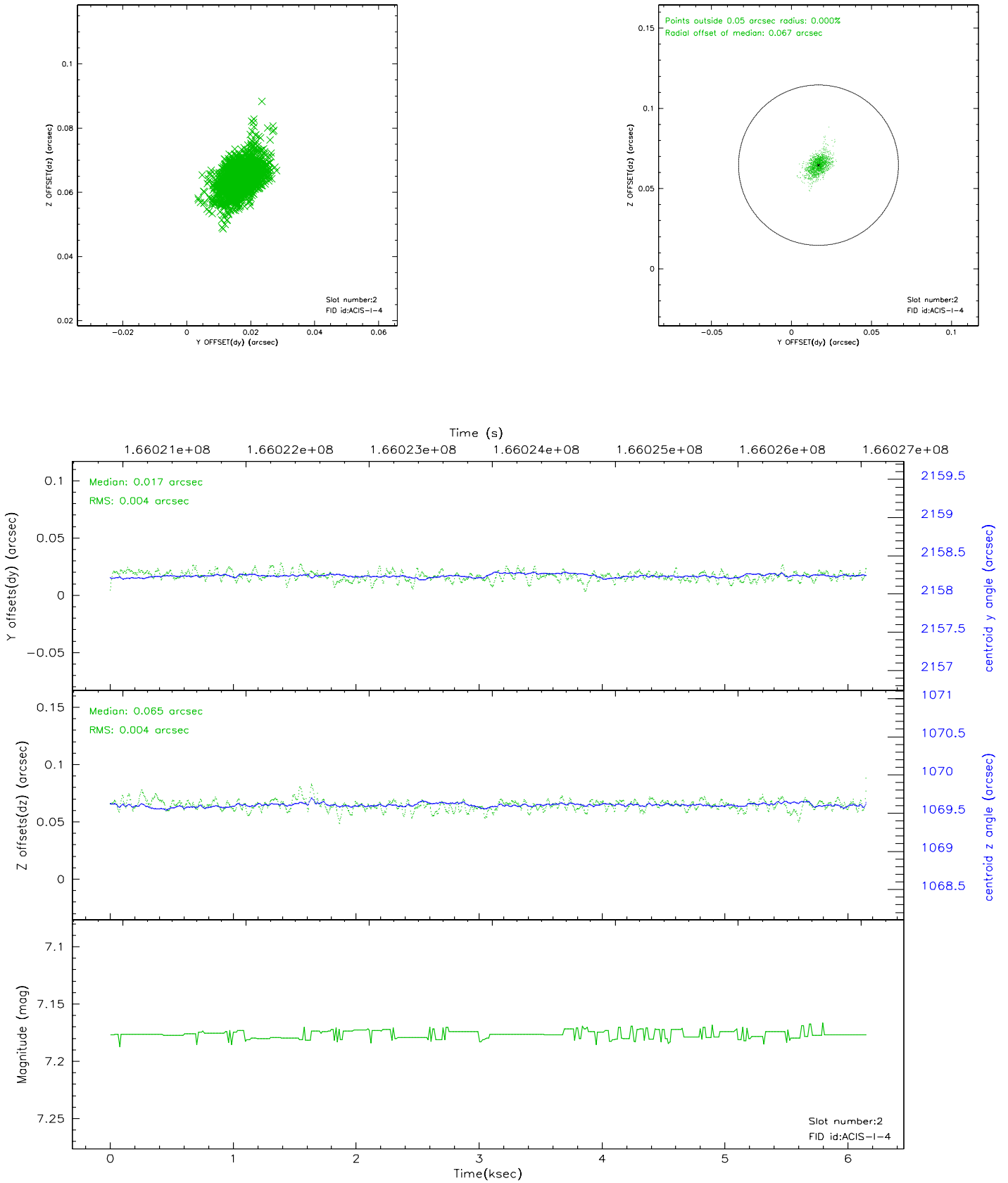
2.5.1 Slot 0



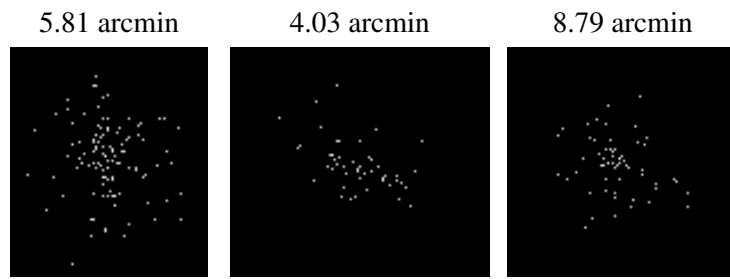
2.5.2 Slot 1



2.5.3 Slot 2



3 Point Sources



A Summary

A.1 Status

V&V Scientist	Jen Lauer
V&V Date (YYYY-MM-DD)	2006.07.30
V&V Edition	1
V&V Disposition and Status	OK
V&V Charge Time	4.919

A.2 Comments