

# V&V Reference Report

## L2 ASCDS Version : 7.6.8

Observation 4250 - L2 Version 001  
Chandra X-Ray Center

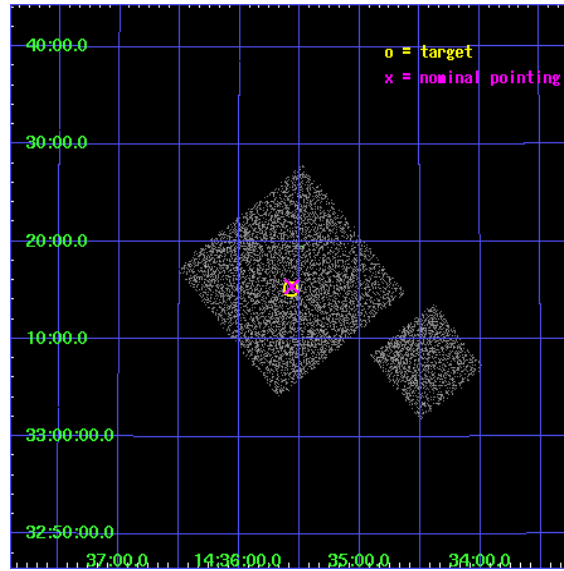
L2 Processing Date : Jul 29 2006

## Contents

<b>1</b>	<b>Front</b>	<b>2</b>
<b>2</b>	<b>OBI</b>	<b>3</b>
2.1	OBI . . . . .	3
2.1.1	Images . . . . .	3
2.1.2	Bias . . . . .	3
2.1.3	Parameters . . . . .	4
2.1.4	Events . . . . .	4
2.2	Compared Parameters . . . . .	5
2.3	Aspect . . . . .	6
2.4	Star Slots . . . . .	9
2.4.1	Slot 3 . . . . .	9
2.4.2	Slot 4 . . . . .	10
2.4.3	Slot 5 . . . . .	11
2.4.4	Slot 6 . . . . .	12
2.4.5	Slot 7 . . . . .	13
2.5	FID Slots . . . . .	14
2.5.1	Slot 0 . . . . .	14
2.5.2	Slot 1 . . . . .	15
2.5.3	Slot 2 . . . . .	16
<b>3</b>	<b>Point Sources</b>	<b>17</b>
<b>A</b>	<b>Summary</b>	<b>18</b>
A.1	Status . . . . .	18
A.2	Comments . . . . .	18

# 1 Front

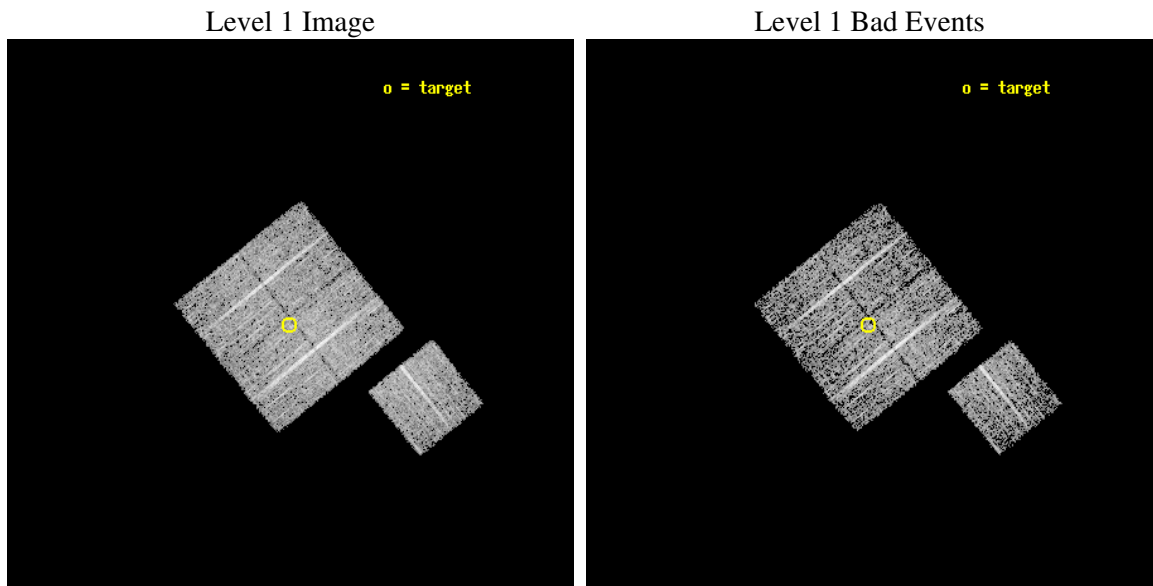
seq_num	900293
obs_id	4250
title	A CHANDRA WIDE-FIELD SURVEY TO MAP THE COSMIC WEB AND INVESTIGATE THE EVOLUTION OF NUCLEAR ACCRETION
observer	Dr. Christine Jones
object	SD29
dtcycle	0
cycle	P
ra_targ	218.893848
dec_targ	33.253224
ra_nom	218.89118117078
dec_nom	33.257288220393
roll_nom	141.01015295226
revision	2
ontime	4773.9999908209
livetime	4711.6241663731
ontime0	4773.9999908209
ontime1	4773.9999908209
ontime2	4773.9999908209
ontime3	4773.9999908209
ontime6	4773.9999908209
l2events	9766



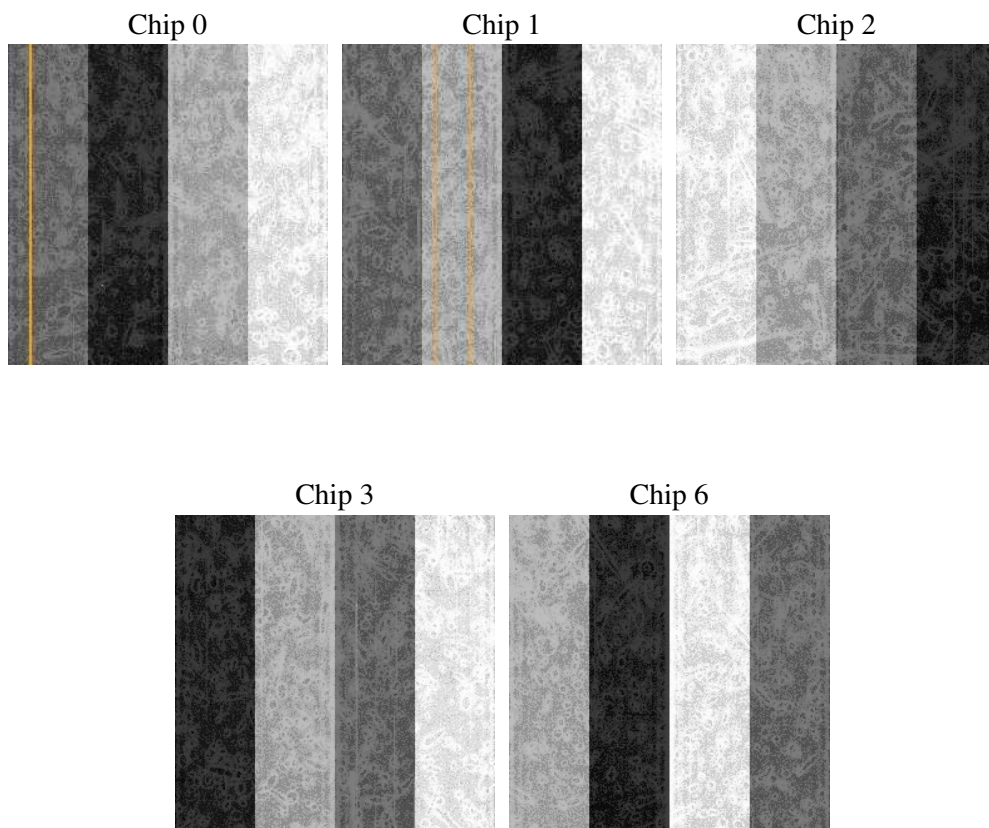
## 2 OBI

### 2.1 OBI

#### 2.1.1 Images



#### 2.1.2 Bias



### 2.1.3 Parameters

obi_num	1
ascdsver	7.6.8
caldsver	3.2.2
date	2006-07-30T01:57:33
revision	2

sched_exp_time	5000.000000
ontime	4780.6131716669
ontime0	4780.6131915748
ontime1	4780.6131716669
ontime2	4780.6131915748
ontime3	4780.6131716669
ontime6	4780.6131915748
l1events	118580

### 2.1.4 Events

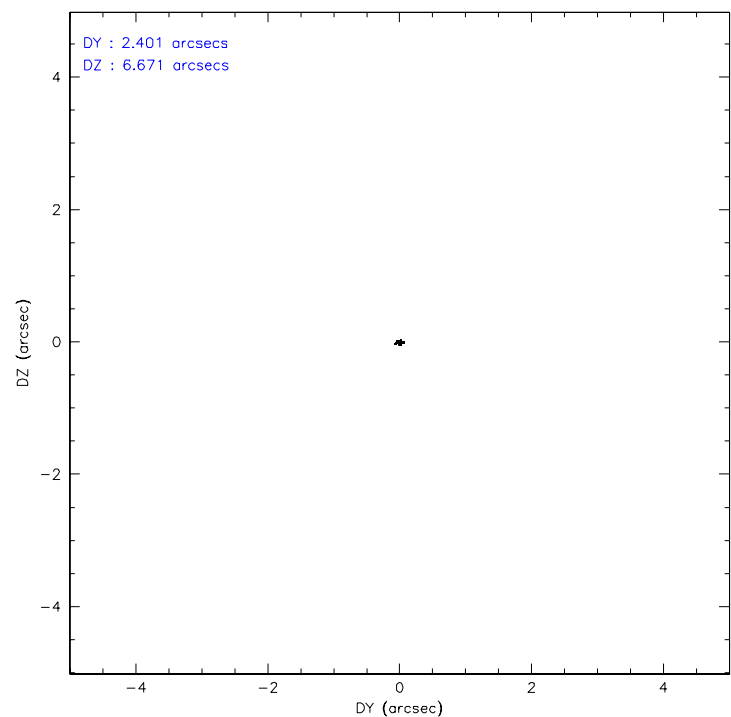
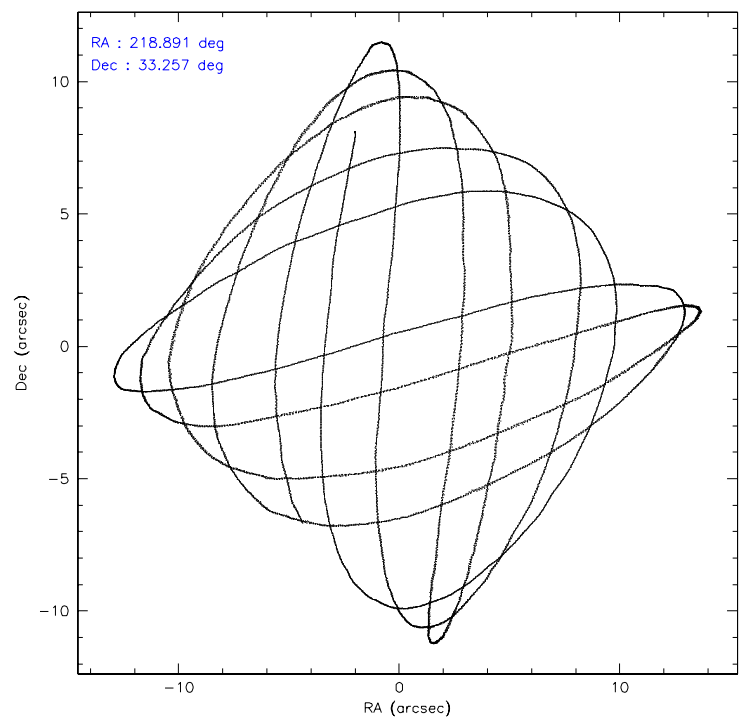
	ccd 0	ccd 1	ccd 2	ccd 3	ccd 6
level 1 events	21605	22755	26298	24755	23167
rejected events	19279	20236	23972	22378	20812
rejected %	89%	88%	91%	90%	89%

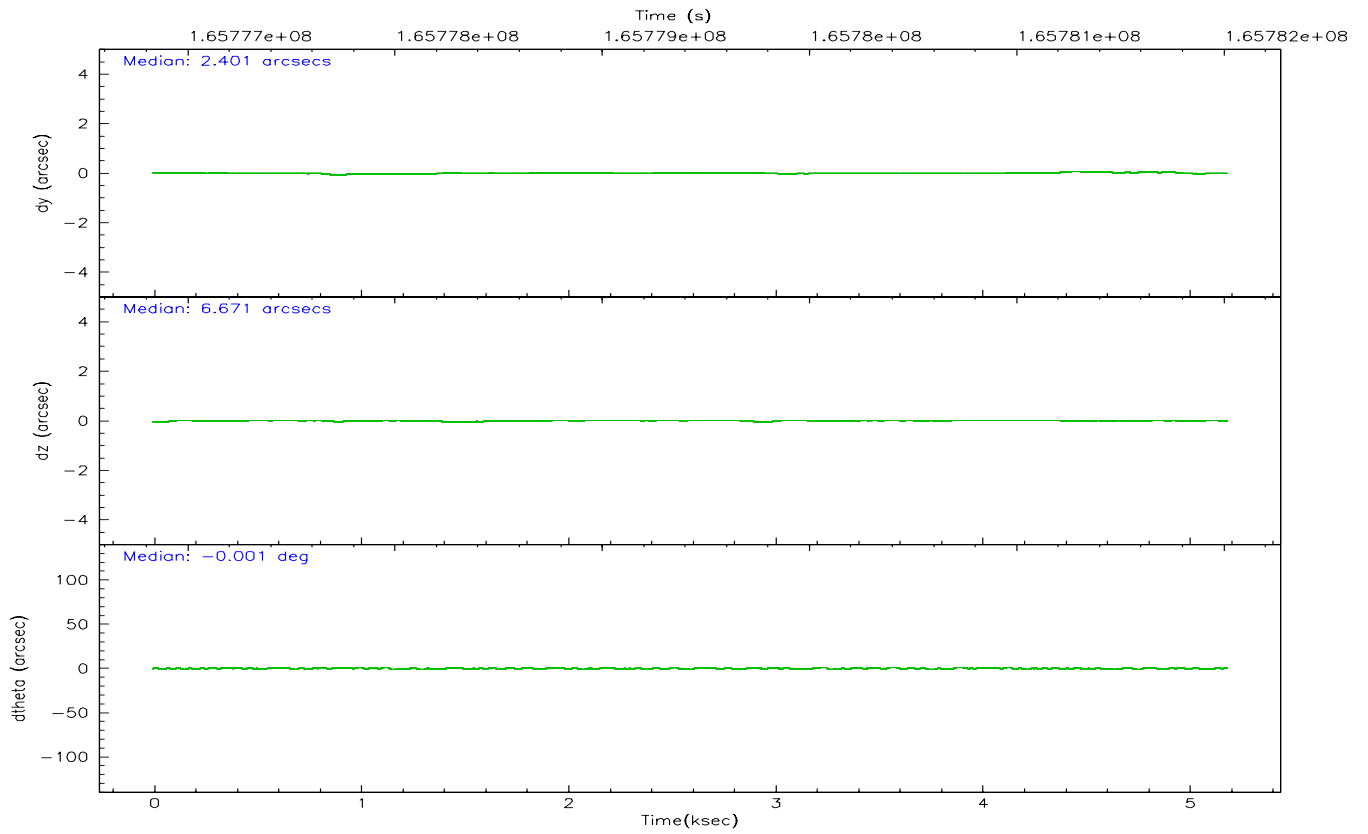
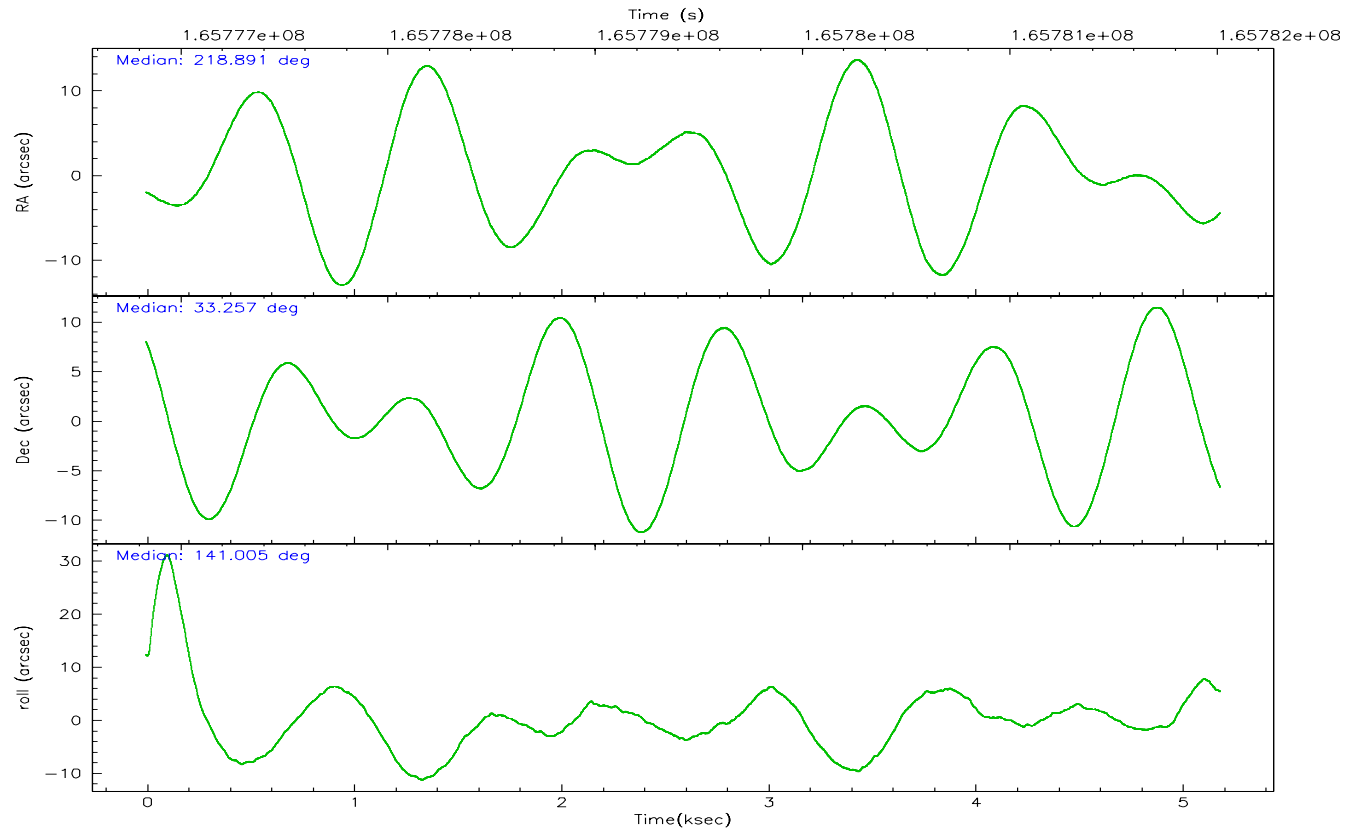
	ccd 0	ccd 1	ccd 2	ccd 3	ccd 6
grade 0 events	822	859	847	907	868
	3%	3%	3%	3%	3%
grade 1 events	19	11	17	17	14
	0%	0%	0%	0%	0%
grade 2 events	521	537	536	473	518
	2%	2%	2%	1%	2%
grade 3 events	296	318	287	290	259
	1%	1%	1%	1%	1%
grade 4 events	238	317	268	277	254
	1%	1%	1%	1%	1%
grade 5 events	690	760	662	790	745
	3%	3%	2%	3%	3%
grade 6 events	452	490	393	435	456
	2%	2%	1%	1%	1%
grade 7 events	18567	19463	23288	21566	20053
	85%	85%	88%	87%	86%

## 2.2 Compared Parameters

Parameter	Planned	Actual	Parameter	Planned	Actual
Instrument	ACIS	ACIS	Obspar format version number	6	6
Detector	ACIS-01236	ACIS-01236	Obspar file type	PREDICTED	ACTUAL
Grating	NONE	NONE	Obspar update status	NONE	UPDATED
Data mode	VFAINT	VFAINT	On-chip summing requested	N	N
Observation mode	POINTING	POINTING	Subarray requested	NONE	NONE
Pointing RA	218.923604	218.8911811707816	Alternating exposures requested	N	N
Pointing Dec	33.253146	33.25728822039265	Primary exposure time	0.000000	3.1
Pointing Roll	140.783683	141.010152952261			
SIM focus pos (mm)	-0.782348	-0.7809083437167272			
SIM defocus (mm)	0	0.001439871863259334			
SIM translation stage pos (mm)	-233.592463	-233.5874344608287			
SIM translation stage offset (mm)	0	-0.005018542100998502			
Observation start time	165777010.184000	165776586.87872			
Observation start date	2003-04-03T17:09:06	2003-04-03T17:03:06			
Observation end time	165782010.184000	165782143.91645			
Observation end date	2003-04-03T18:32:26	2003-04-03T18:35:43			
Read mode	TIMED	TIMED			

2.3 Aspect





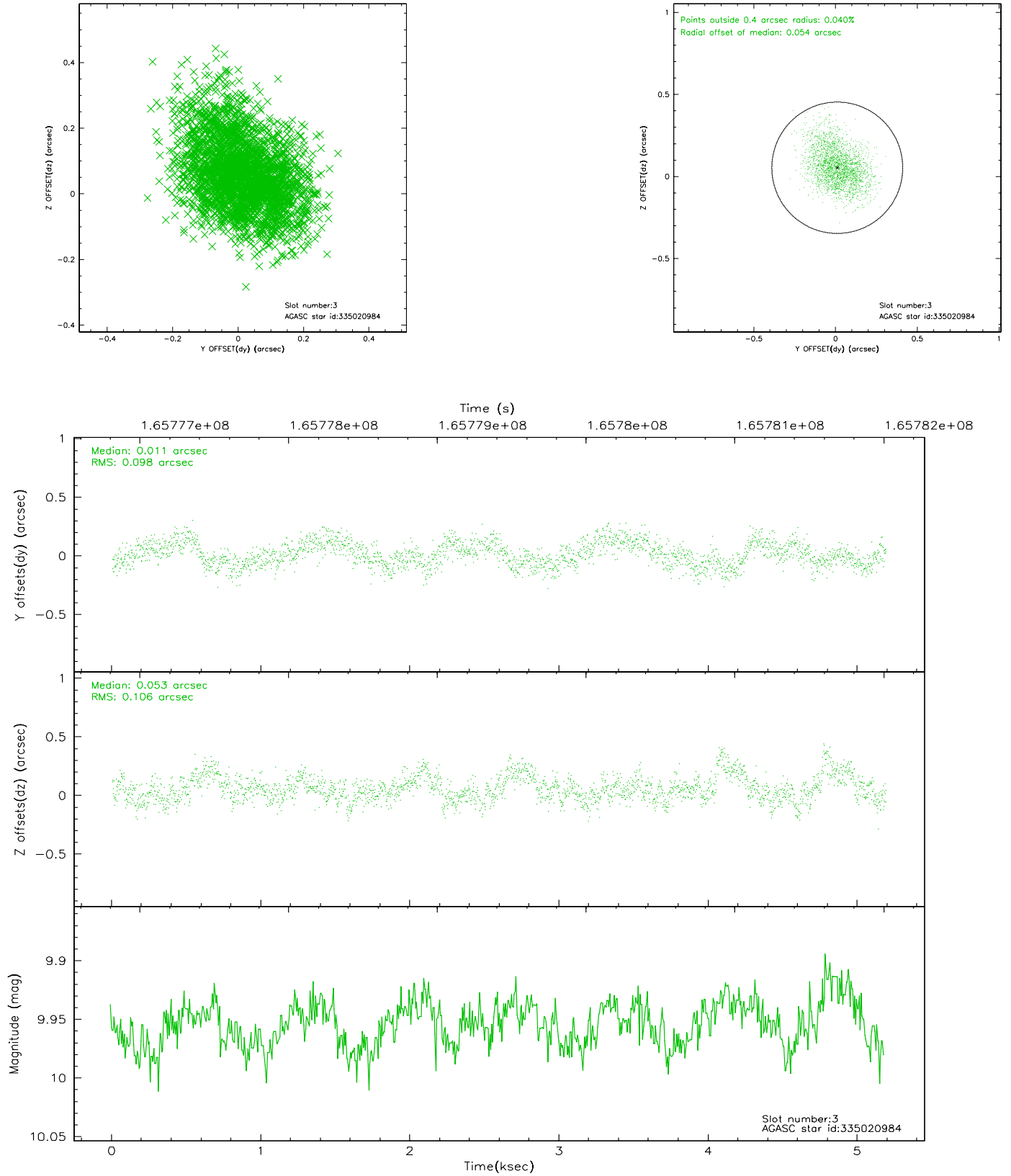
### Slot Statistics

slot	status	id	mag	n_pts	med_dy	med_dz	dr1	dr2	ra	dec	mean_y	mean_z
0	FID	ACIS-I-1	7.25	1265	-0.009	0.022	0.006	0.010	0.000000	0.000000	937.38	-830.05
1	FID	ACIS-I-5	7.24	1265	-0.049	0.044	0.005	0.009	0.000000	0.000000	-1810.07	1066.94
2	FID	ACIS-I-6	7.26	1265	-0.034	0.004	0.006	0.010	0.000000	0.000000	401.69	1712.68
3	GUIDE	335020984	9.95	2515	0.011	0.053	0.153	0.249	218.841668	33.815112	1469.94	-1412.47
4	GUIDE	335027640	9.09	2518	-0.017	-0.014	0.137	0.206	218.092211	33.193770	1812.43	1741.04
5	GUIDE	335152784	7.23	2530	-0.036	-0.025	0.089	0.130	219.280617	33.678221	141.07	-1862.54
6	GUIDE	335154960	9.54	2531	0.146	-0.073	0.169	0.266	219.209961	33.303073	-553.15	-685.86
7	GUIDE	335157088	9.08	2530	-0.093	0.048	0.106	0.169	219.274029	33.726909	266.66	-1986.31

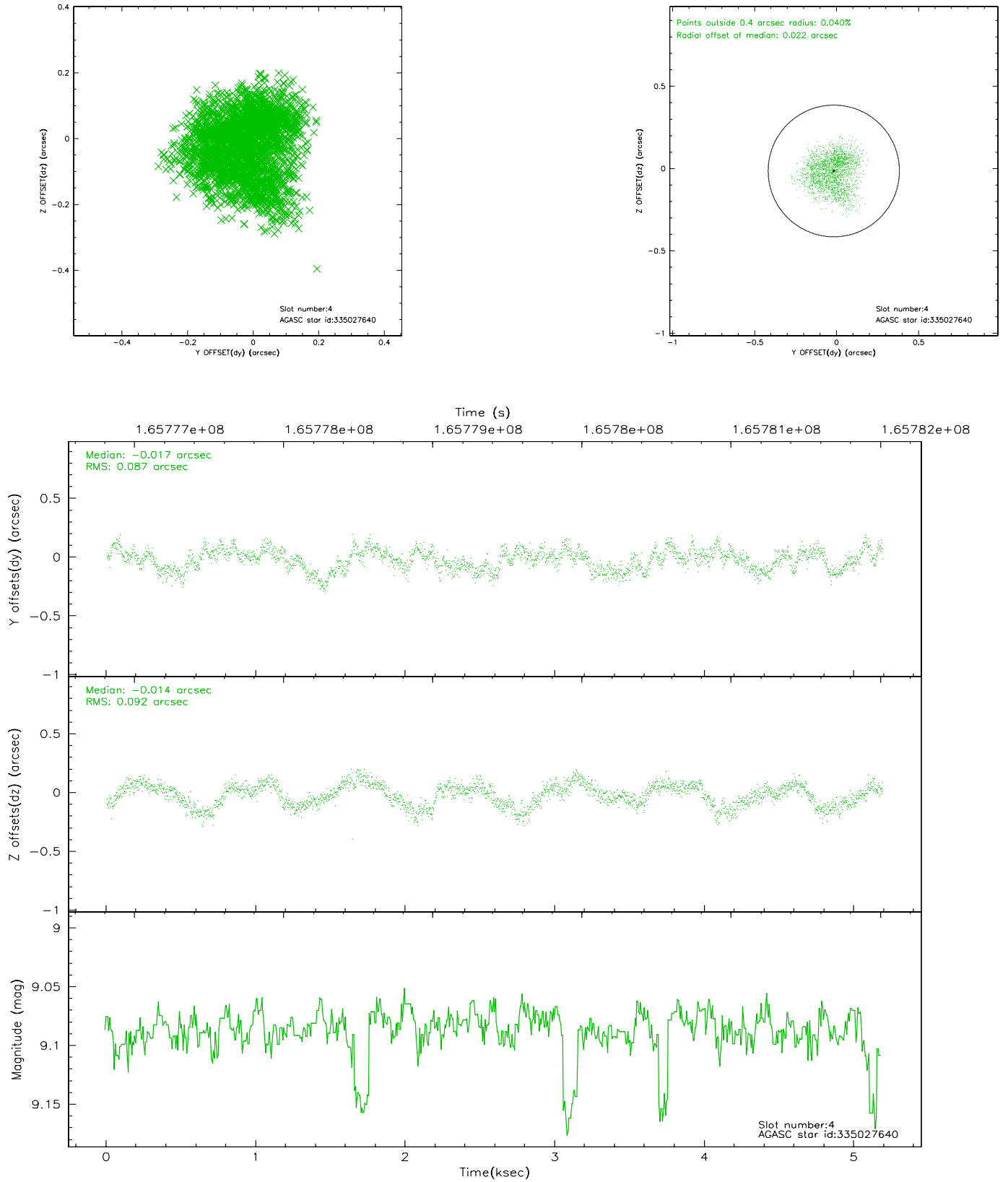


## 2.4 Star Slots

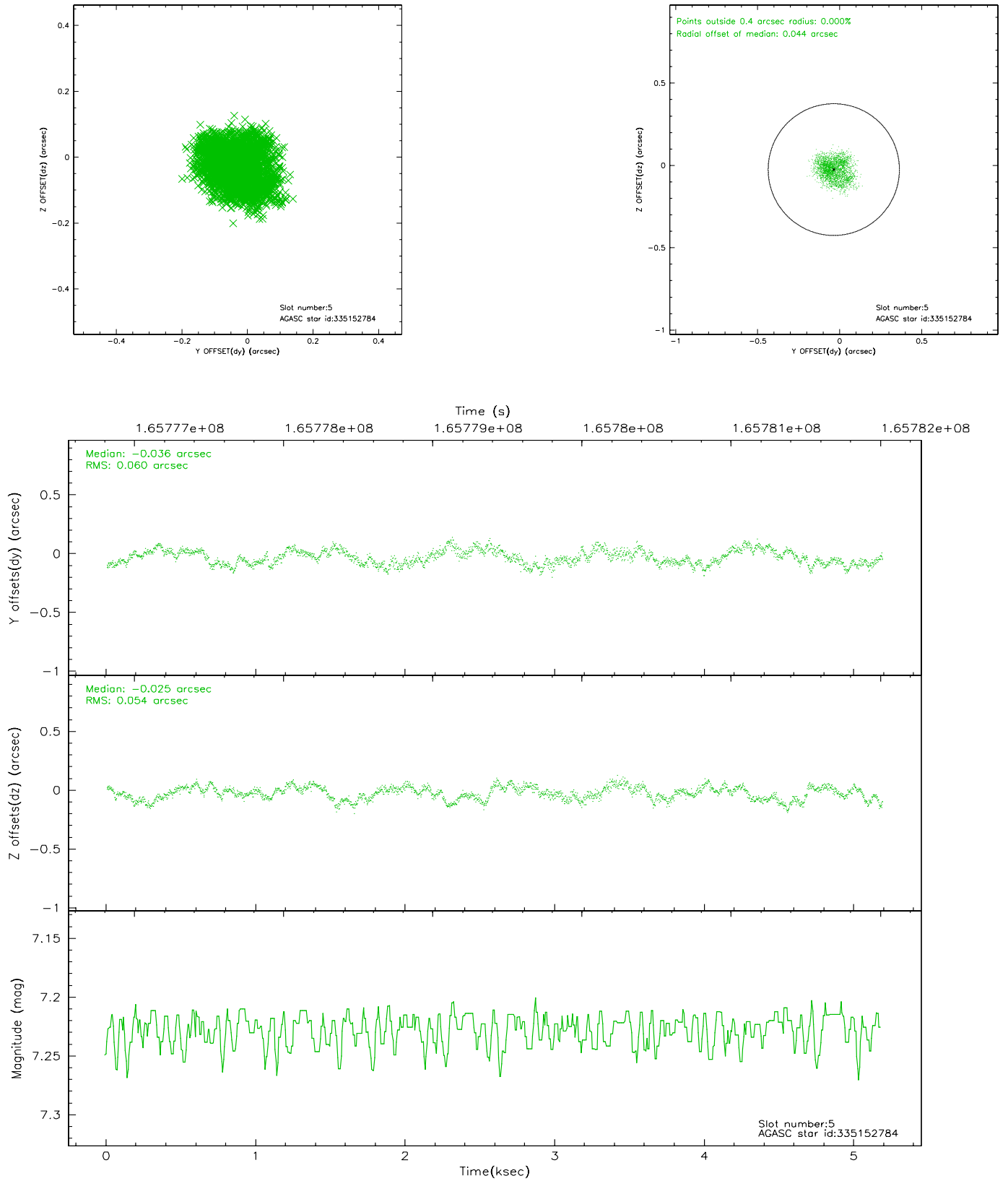
### 2.4.1 Slot 3



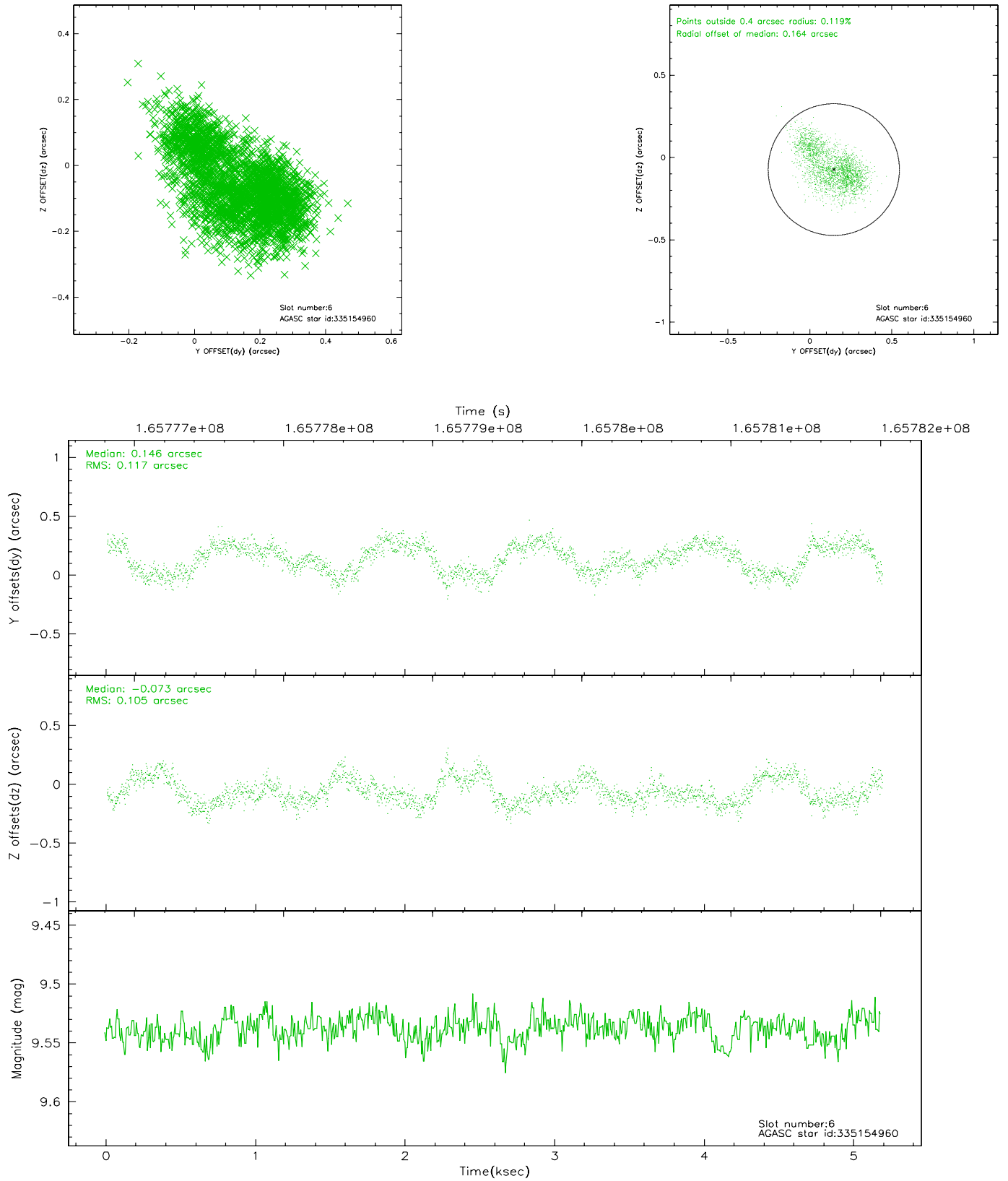
## 2.4.2 Slot 4



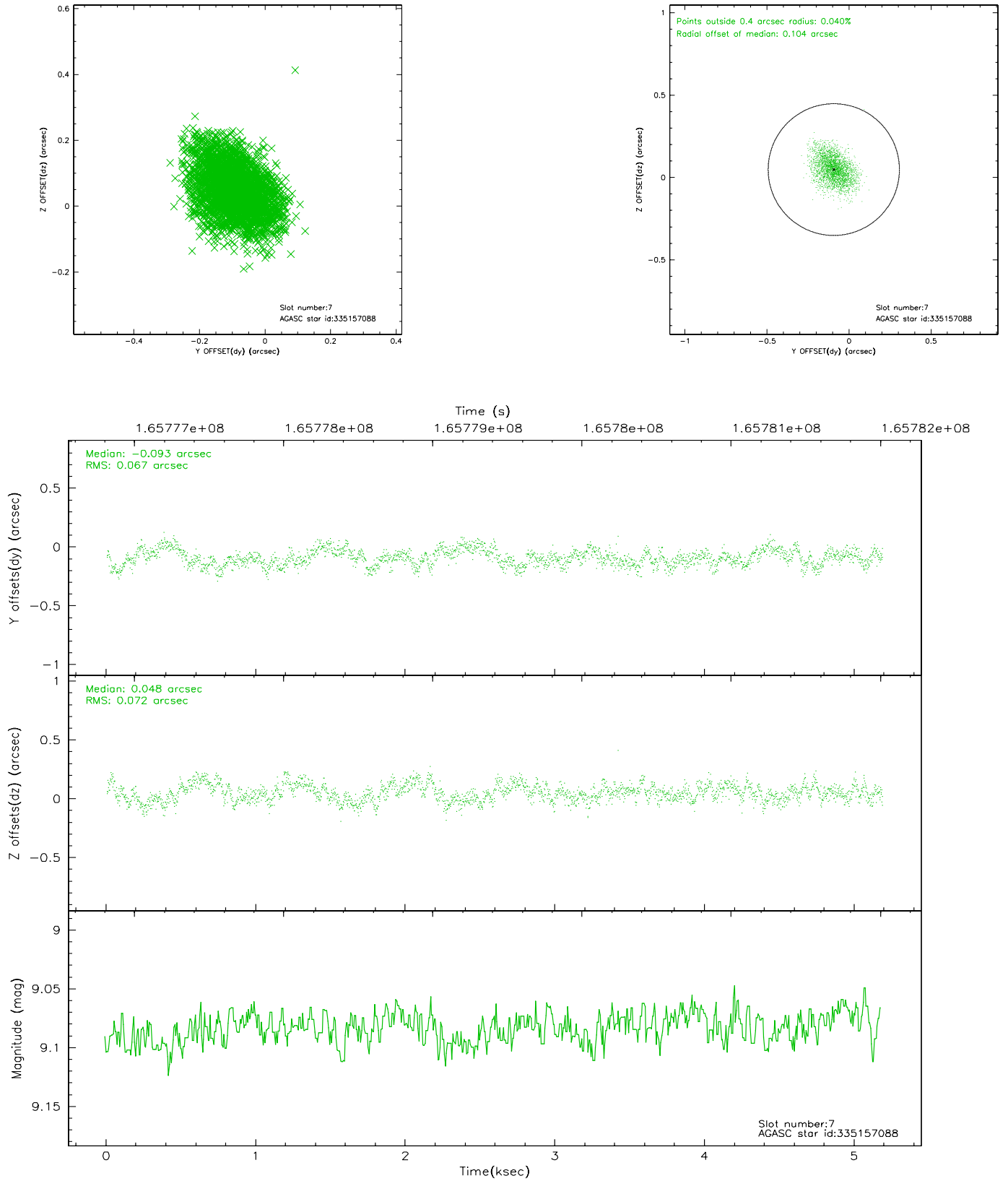
### 2.4.3 Slot 5



## 2.4.4 Slot 6

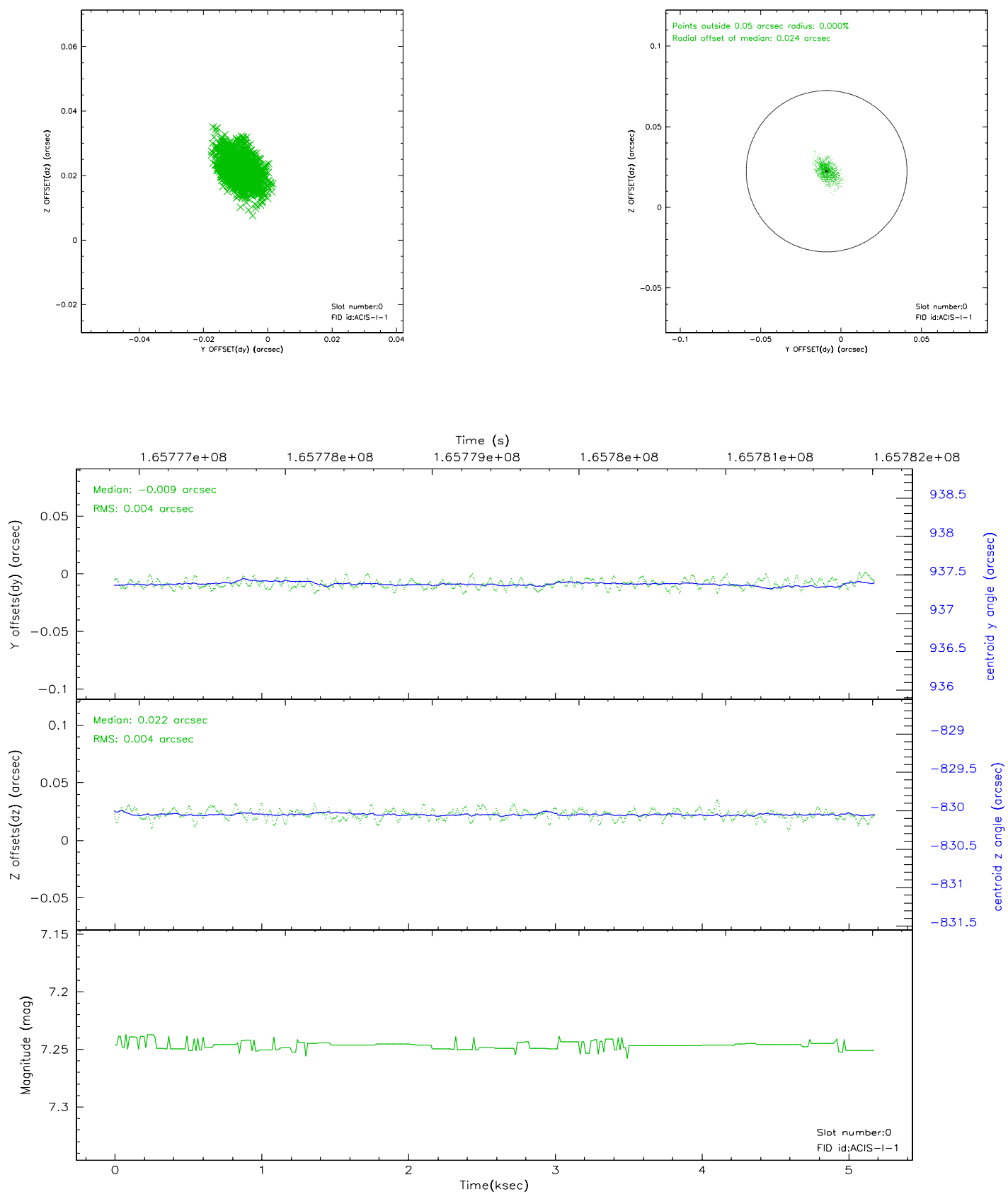


## 2.4.5 Slot 7

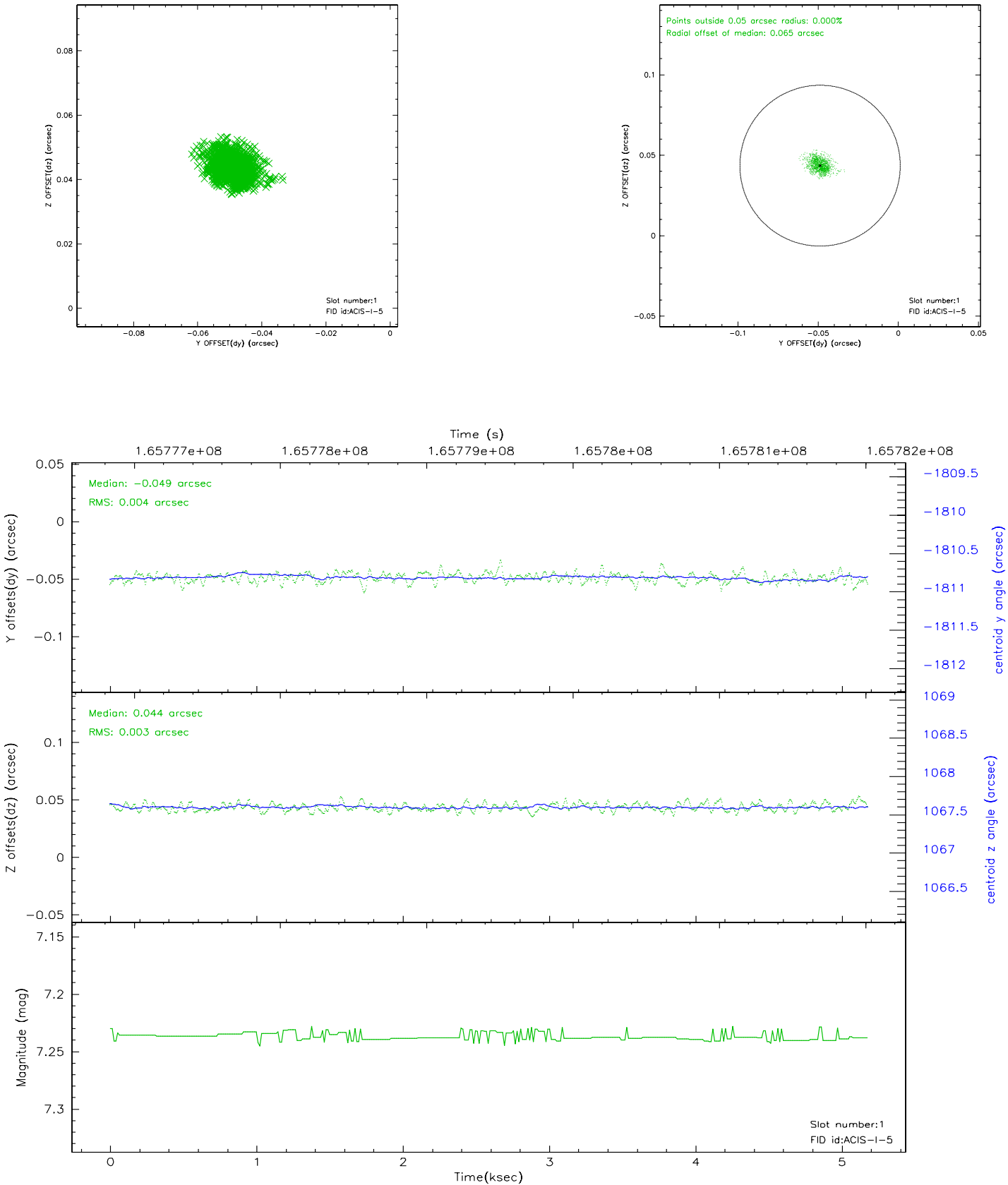


## 2.5 FID Slots

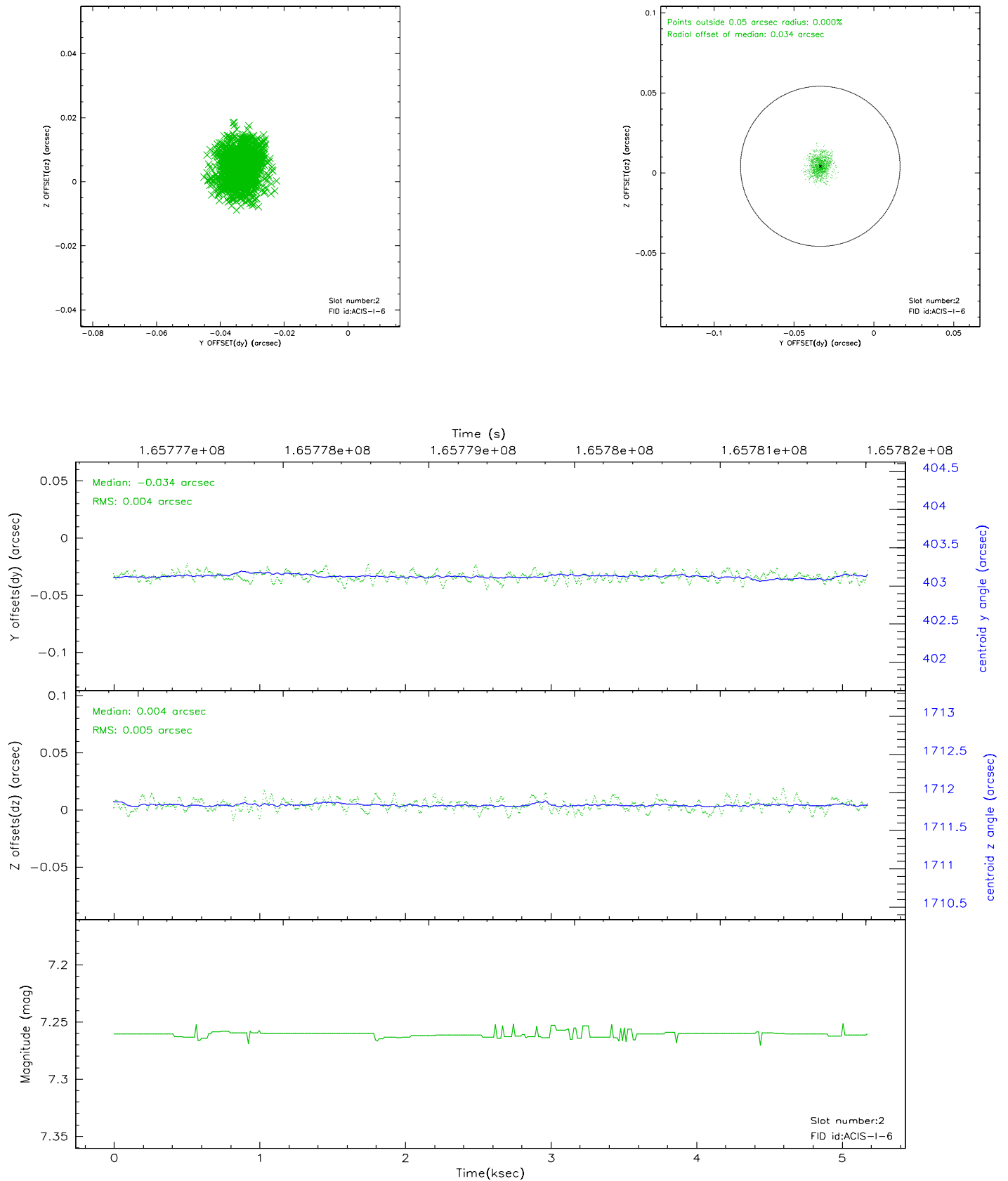
### 2.5.1 Slot 0



2.5.2 Slot 1



### 2.5.3 Slot 2





### 3 Point Sources

4.24 arcmin



## A Summary

### A.1 Status

V&V Scientist	Jen Lauer
V&V Date (YYYY-MM-DD)	2006.07.30
V&V Edition	1
V&V Disposition and Status	OK
V&V Charge Time	4.777

### A.2 Comments