

V&V Reference Report

L2 ASCDS Version : 7.6.8

Observation 4230 - L2 Version 001
Chandra X-Ray Center

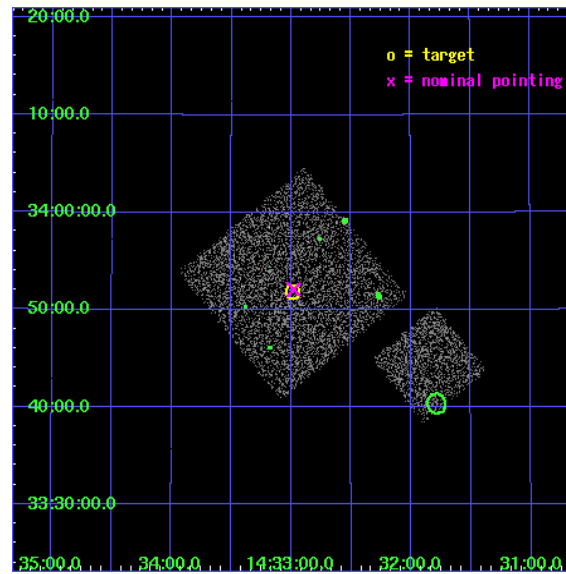
L2 Processing Date : Jul 29 2006

Contents

1	Front	2
2	OBI	3
2.1	OBI	3
2.1.1	Images	3
2.1.2	Bias	3
2.1.3	Parameters	4
2.1.4	Events	4
2.2	Compared Parameters	5
2.3	Aspect	6
2.4	Star Slots	9
2.4.1	Slot 3	9
2.4.2	Slot 4	10
2.4.3	Slot 5	11
2.4.4	Slot 6	12
2.4.5	Slot 7	13
2.5	FID Slots	14
2.5.1	Slot 0	14
2.5.2	Slot 1	15
2.5.3	Slot 2	16
3	Point Sources	17
A	Summary	18
A.1	Status	18
A.2	Comments	18

1 Front

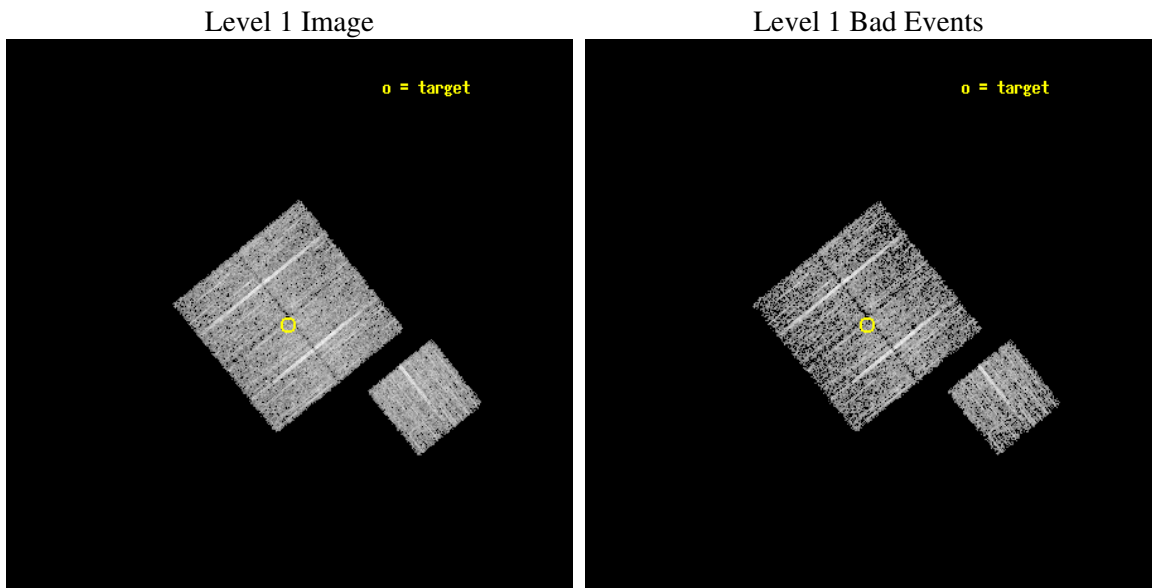
seq_num	900273
obs_id	4230
title	A CHANDRA WIDE-FIELD SURVEY TO MAP THE COSMIC WEB AND INVESTIGATE THE EVOLUTION OF NUCLEAR ACCRETION
observer	Dr. Christine Jones
object	SS25
dtcycle	0
cycle	P
ra_targ	218.246914
dec_targ	33.864306
ra_nom	218.24438648535
dec_nom	33.868378199352
roll_nom	141.01008180912
revision	2
ontime	4777.0999908149
livetime	4714.6836625851
ontime0	4777.0999908149
ontime1	4777.0999908149
ontime2	4777.0999908149
ontime3	4777.0999908149
ontime6	4777.0999908149
l2events	9562



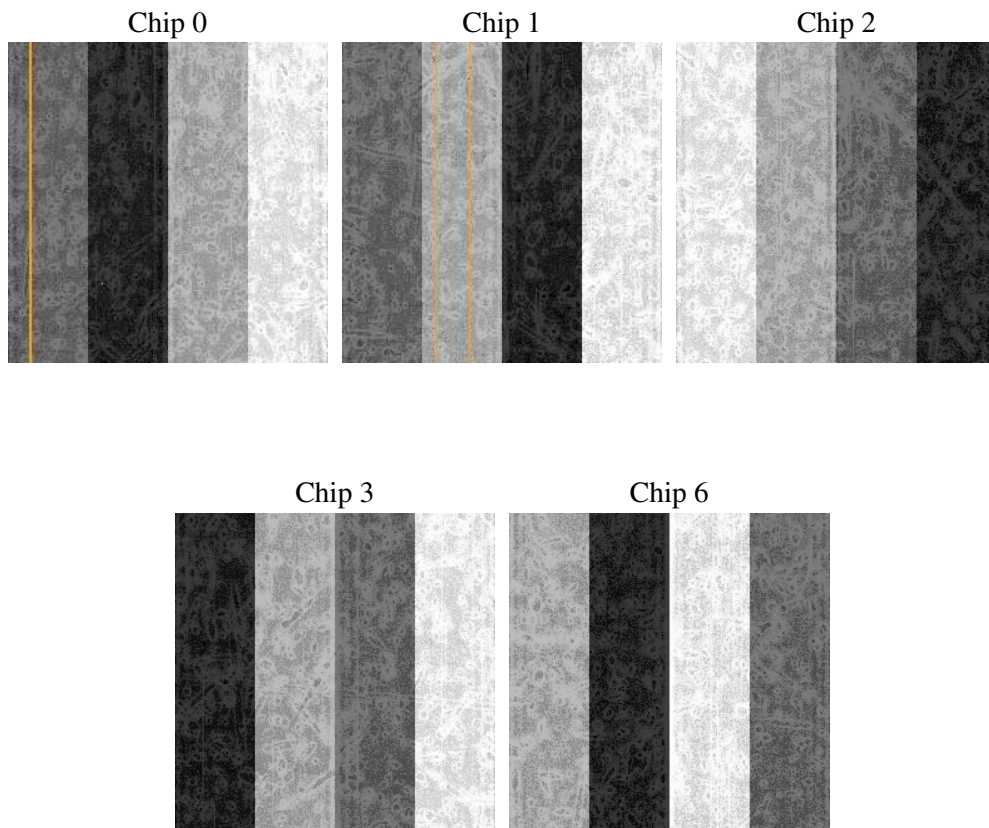
2 OBI

2.1 OBI

2.1.1 Images



2.1.2 Bias



2.1.3 Parameters

obi_num	1
ascdsver	7.6.8
caldbver	3.2.2
date	2006-07-29T22:49:50
revision	2

sched_exp_time	5000.000000
ontime	4780.6169515848
ontime0	4780.6169714928
ontime1	4780.6169515848
ontime2	4780.6169515848
ontime3	4780.6169515848
ontime6	4780.6169515848
llevents	118936

2.1.4 Events

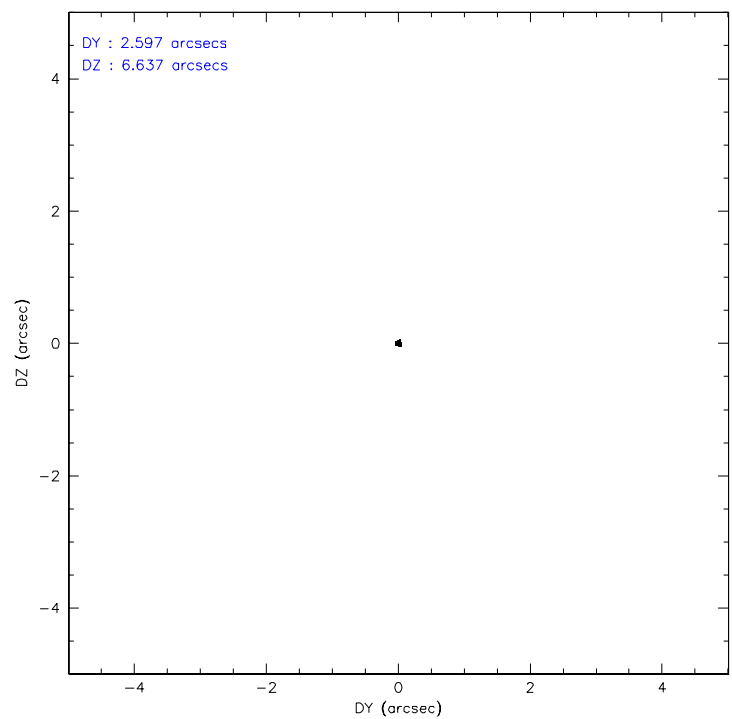
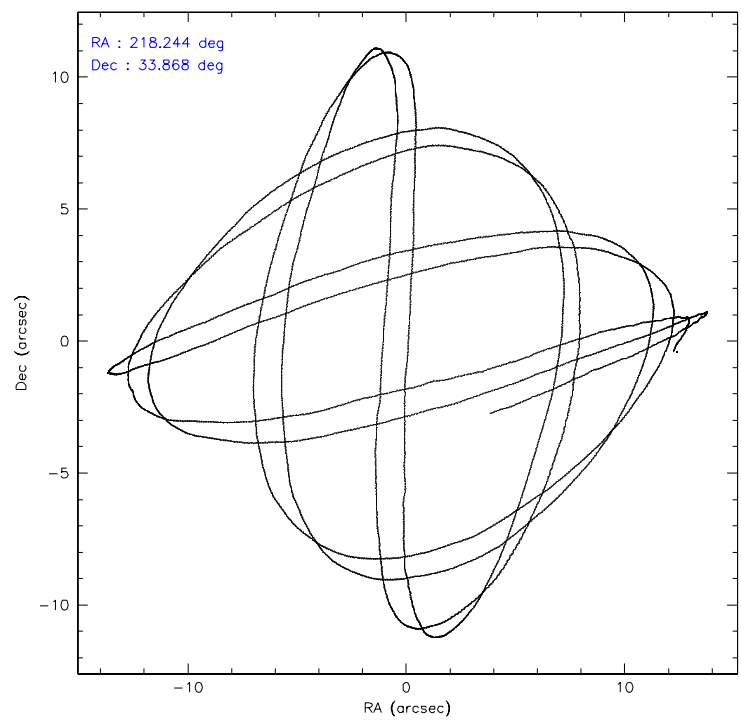
	ccd 0	ccd 1	ccd 2	ccd 3	ccd 6
level 1 events	22142	22401	24936	23669	25788
rejected events	19838	19841	22708	21471	23422
rejected %	89%	88%	91%	90%	90%

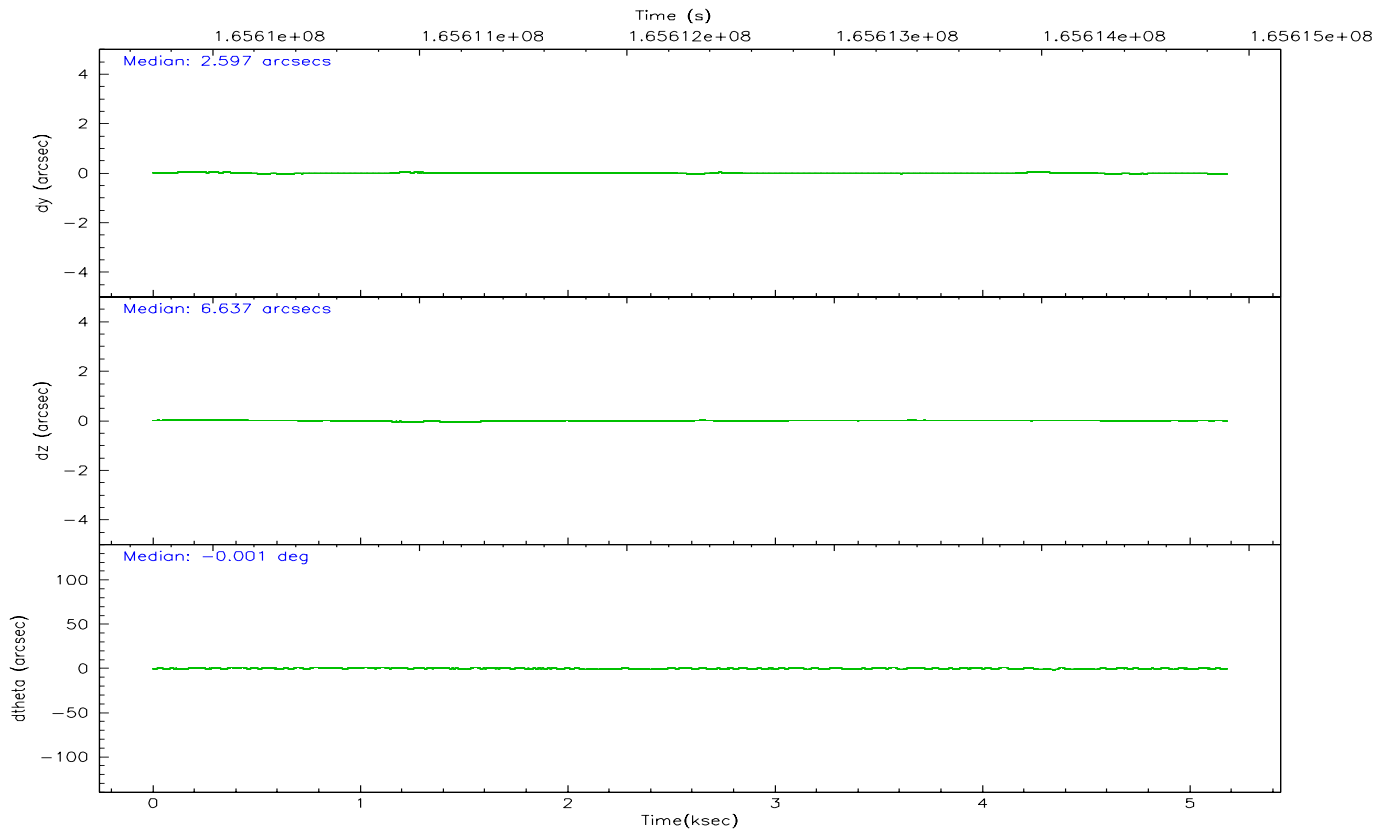
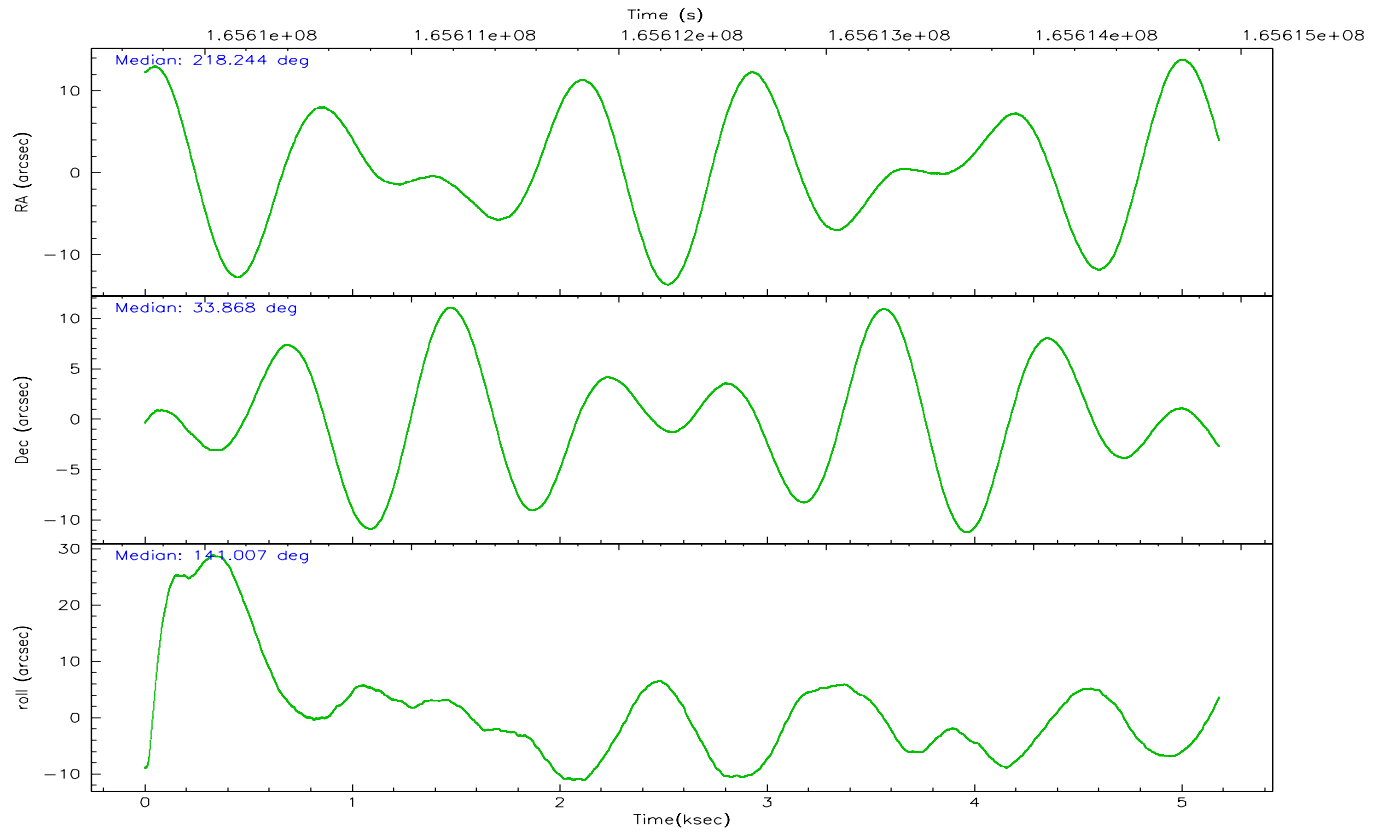
	ccd 0	ccd 1	ccd 2	ccd 3	ccd 6
grade 0 events	900	979	846	817	830
	4%	4%	3%	3%	3%
grade 1 events	7	6	6	15	6
	0%	0%	0%	0%	0%
grade 2 events	533	529	531	462	517
	2%	2%	2%	1%	2%
grade 3 events	253	287	230	263	276
	1%	1%	0%	1%	1%
grade 4 events	242	286	251	258	287
	1%	1%	1%	1%	1%
grade 5 events	680	715	641	800	786
	3%	3%	2%	3%	3%
grade 6 events	376	481	371	398	458
	1%	2%	1%	1%	1%
grade 7 events	19151	19118	22060	20656	22628
	86%	85%	88%	87%	87%

2.2 Compared Parameters

Parameter	Planned	Actual	Parameter	Planned	Actual
Instrument	ACIS	ACIS	Obspar format version number	6	6
Detector	ACIS-01236	ACIS-01236	Obspar file type	PREDICTED	ACTUAL
Grating	NONE	NONE	Obspar update status	NONE	UPDATED
Data mode	VFAINT	VFAINT	On-chip summing requested	N	N
Observation mode	POINTING	POINTING	Subarray requested	NONE	NONE
Pointing RA	218.276883	218.2443864853471	Alternating exposures requested	N	N
Pointing Dec	33.864220	33.8683781993518	Primary exposure time	0.000000	3.1
Pointing Roll	140.783299	141.0100818091194			
SIM focus pos (mm)	-0.782348	-0.7809083437167272			
SIM defocus (mm)	0	0.001439871863259334			
SIM translation stage pos (mm)	-233.592463	-233.5874344608287			
SIM translation stage offset (mm)	0	-0.005018542100998502			
Observation start time	165609893.184000	165609516.48417			
Observation start date	2003-04-01T18:43:49	2003-04-01T18:38:36			
Observation end time	165614893.184000	165615026.8844			
Observation end date	2003-04-01T20:07:09	2003-04-01T20:10:26			
Read mode	TIMED	TIMED			

2.3 Aspect



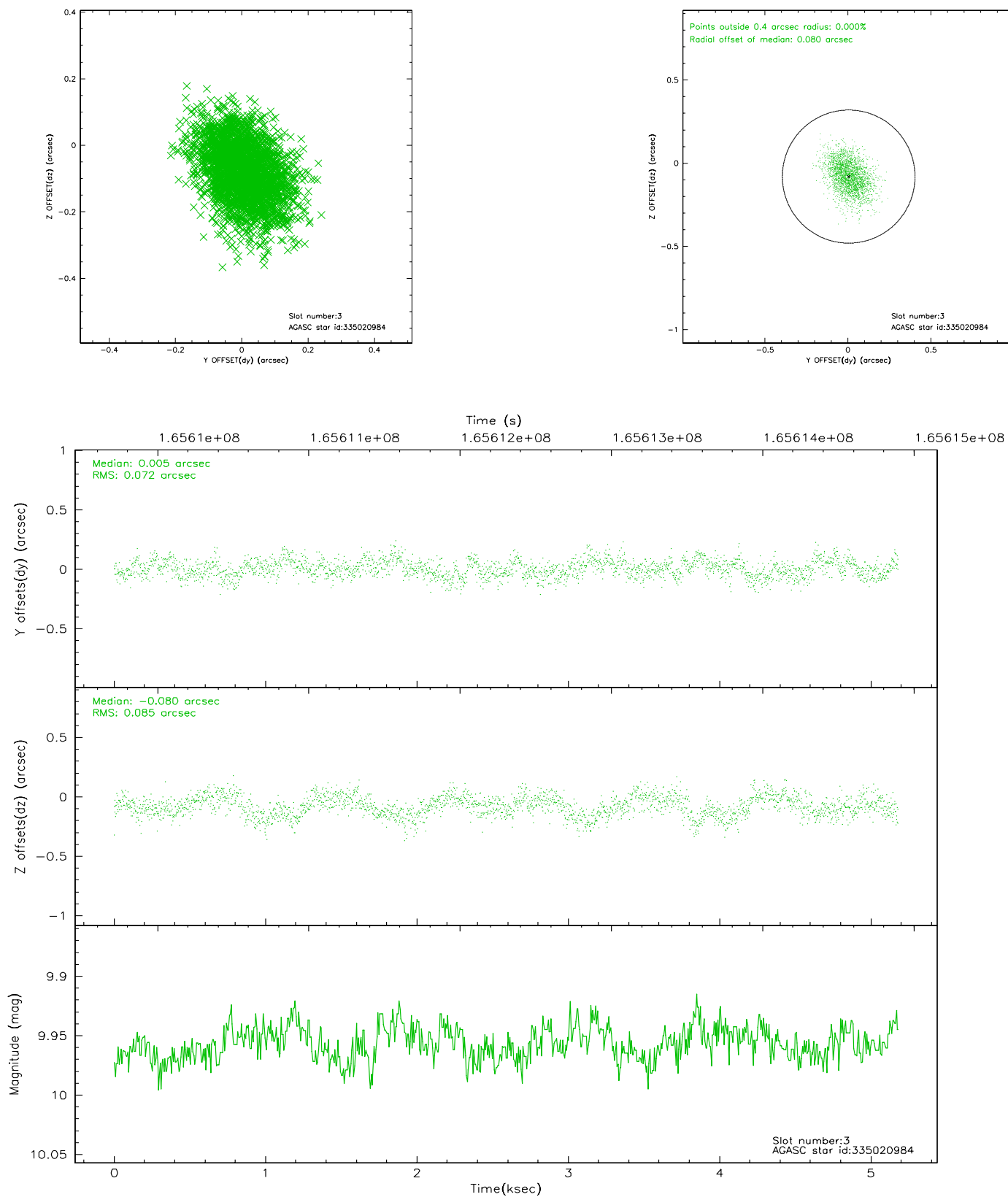


Slot Statistics

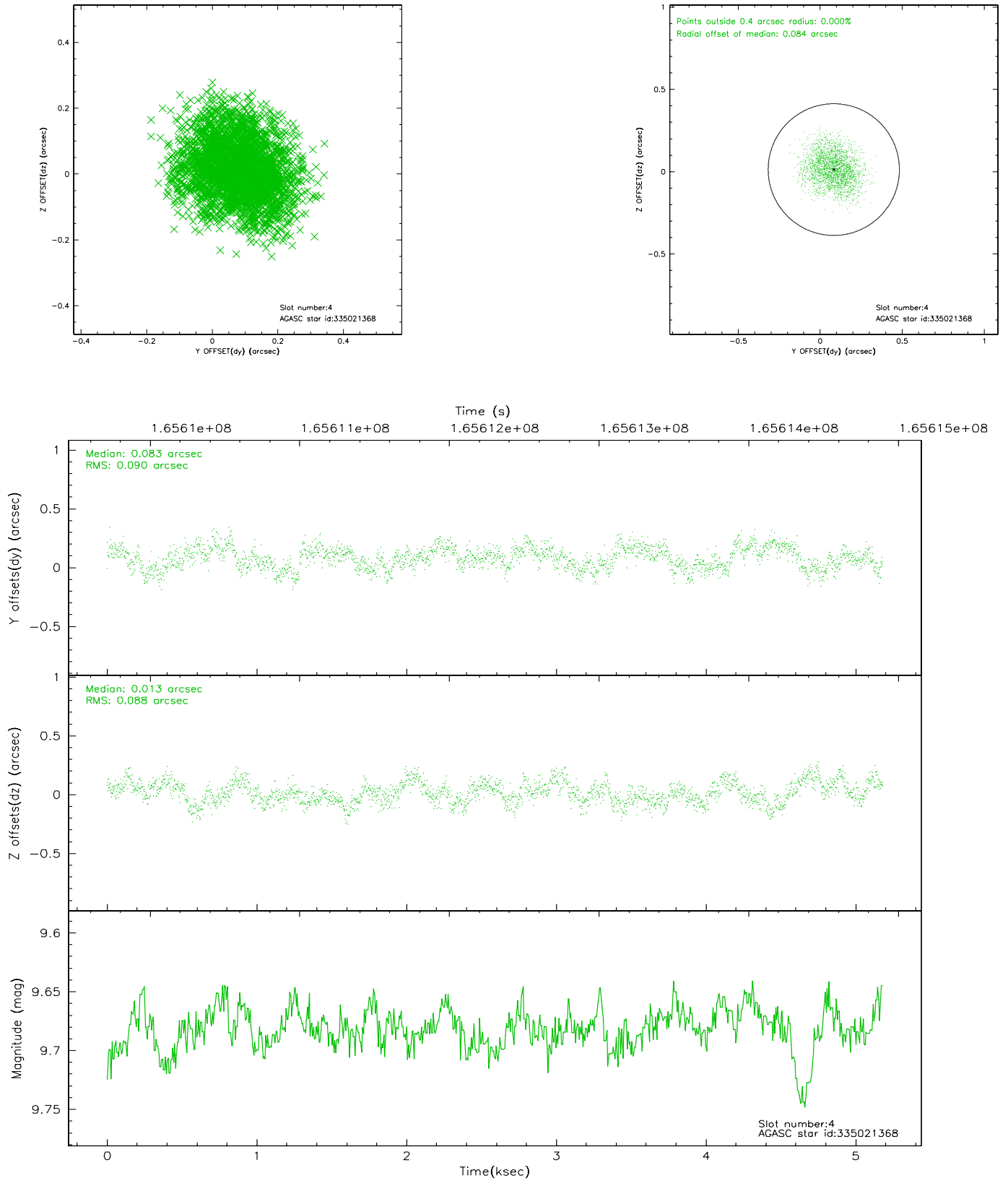
slot	status	id	mag	n_pts	med_dy	med_dz	dr1	dr2	ra	dec	mean_y	mean_z
0	FID	ACIS-I-1	7.25	1264	-0.004	0.019	0.006	0.011	0.000000	0.000000	937.18	-830.02
1	FID	ACIS-I-5	7.24	1264	-0.056	0.047	0.006	0.010	0.000000	0.000000	-1810.29	1066.97
2	FID	ACIS-I-6	7.26	1264	-0.032	0.005	0.007	0.011	0.000000	0.000000	401.48	1712.71
3	GUIDE	335020984	9.96	2524	0.005	-0.080	0.118	0.194	218.841668	33.815112	-1416.66	-934.43
4	GUIDE	335021368	9.68	2526	0.083	0.013	0.137	0.209	217.529643	33.934817	1894.93	1208.18
5	GUIDE	335025040	9.91	2528	-0.111	0.010	0.128	0.218	218.601670	34.305240	257.66	-1840.90
6	GUIDE	335025848	9.73	2524	-0.048	-0.116	0.107	0.172	217.530531	33.778292	1540.29	1645.17
7	GUIDE	335028696	9.18	2526	0.078	0.168	0.085	0.137	217.260519	33.844112	2319.27	1967.31

2.4 Star Slots

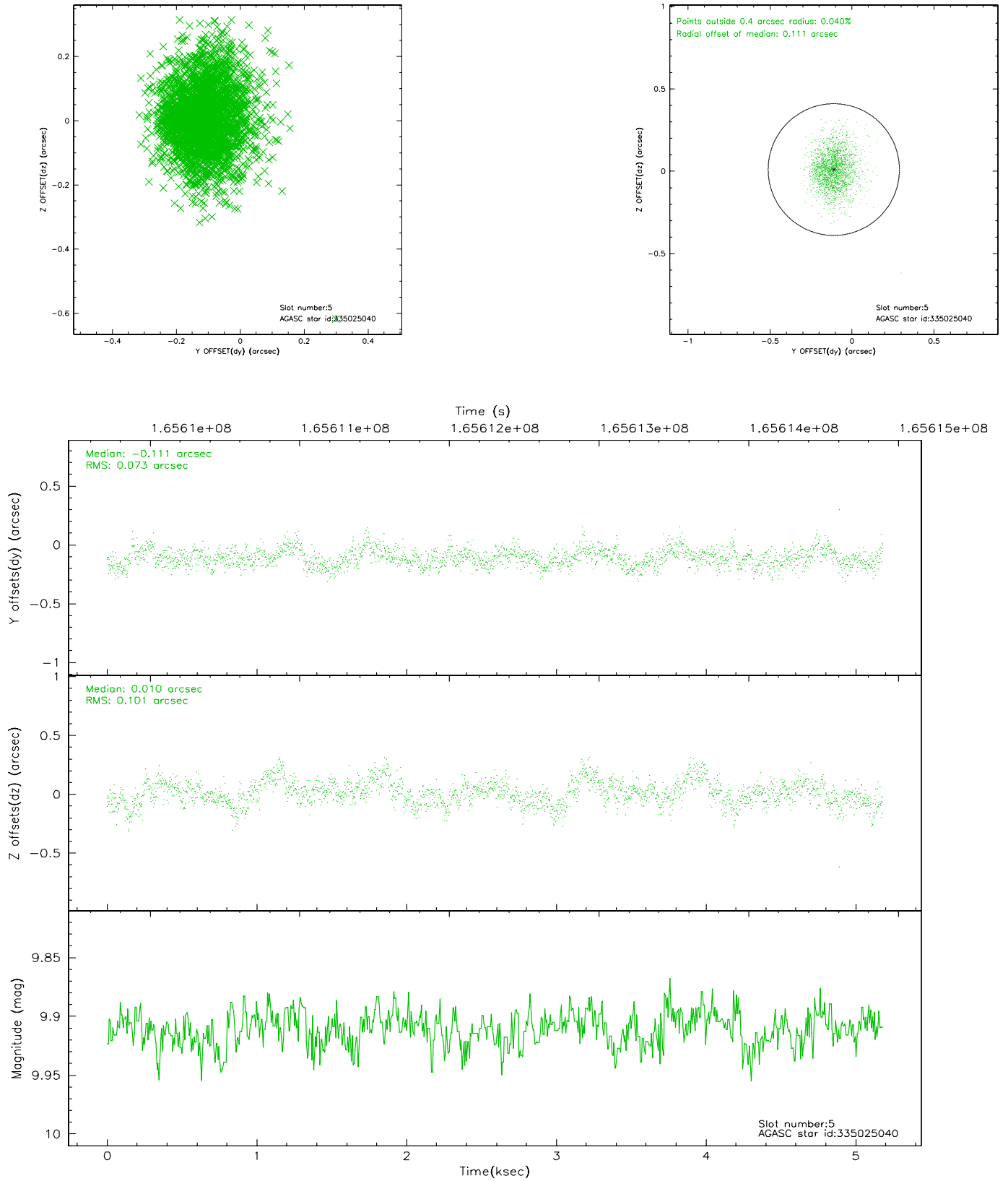
2.4.1 Slot 3



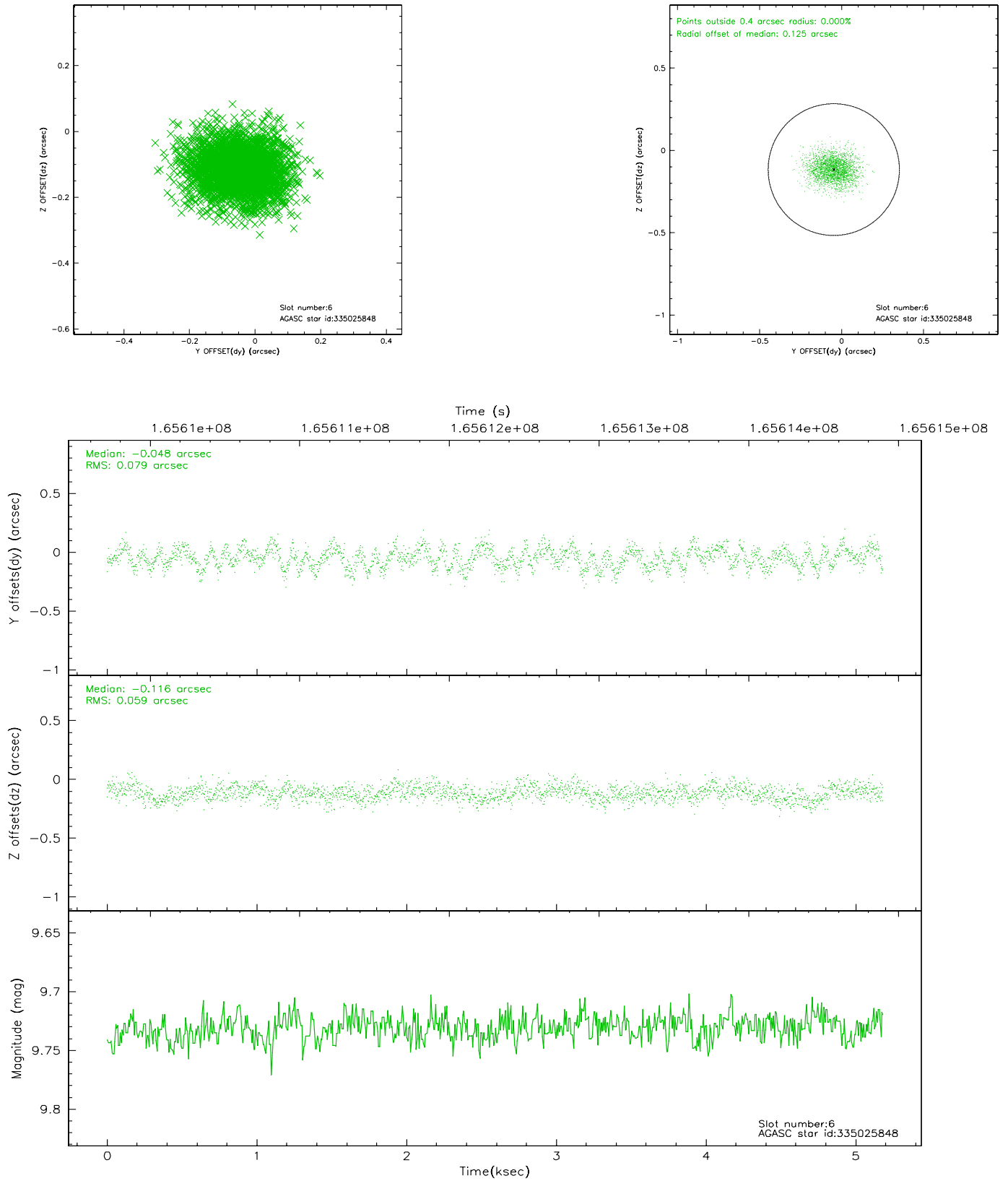
2.4.2 Slot 4



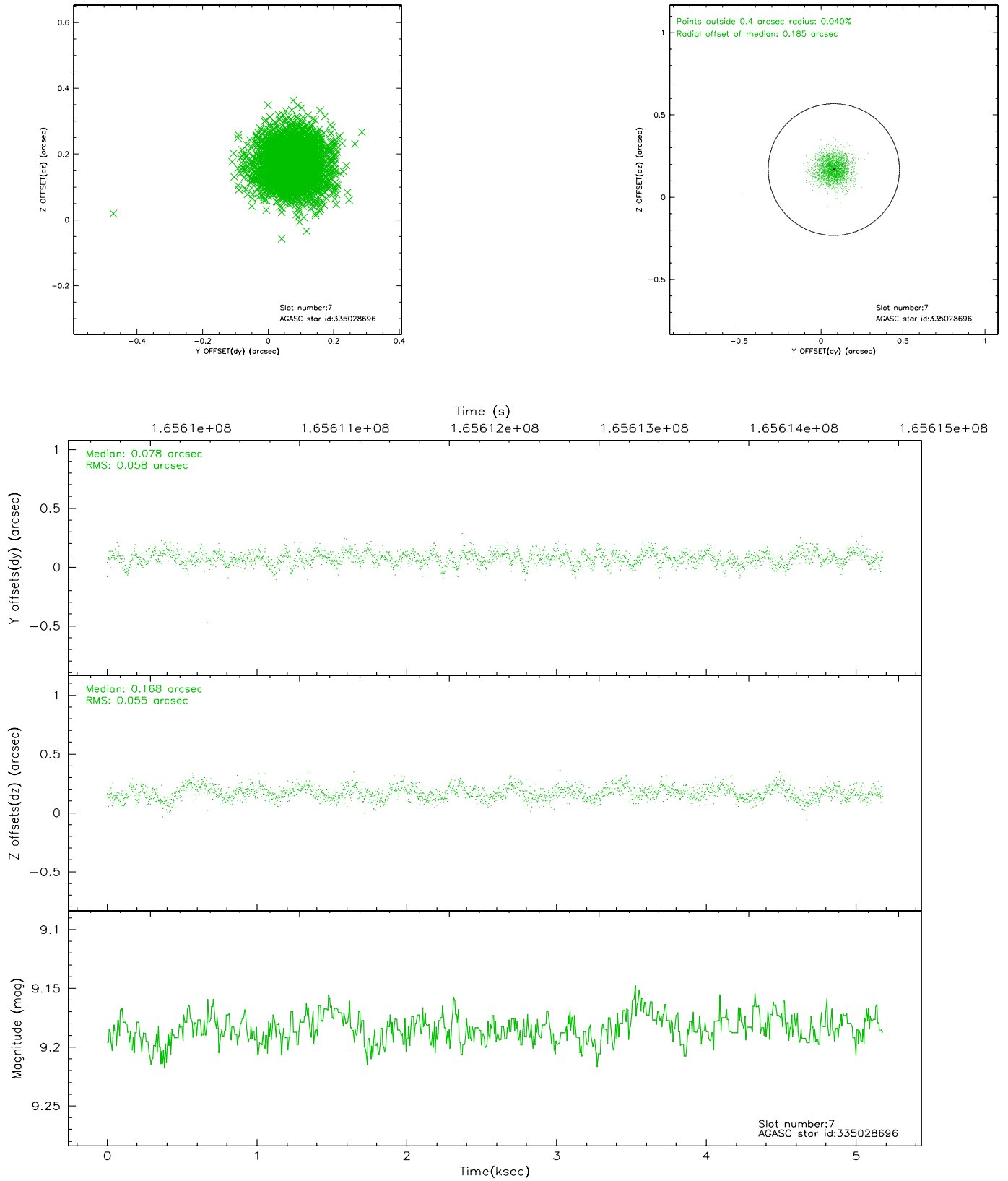
2.4.3 Slot 5



2.4.4 Slot 6

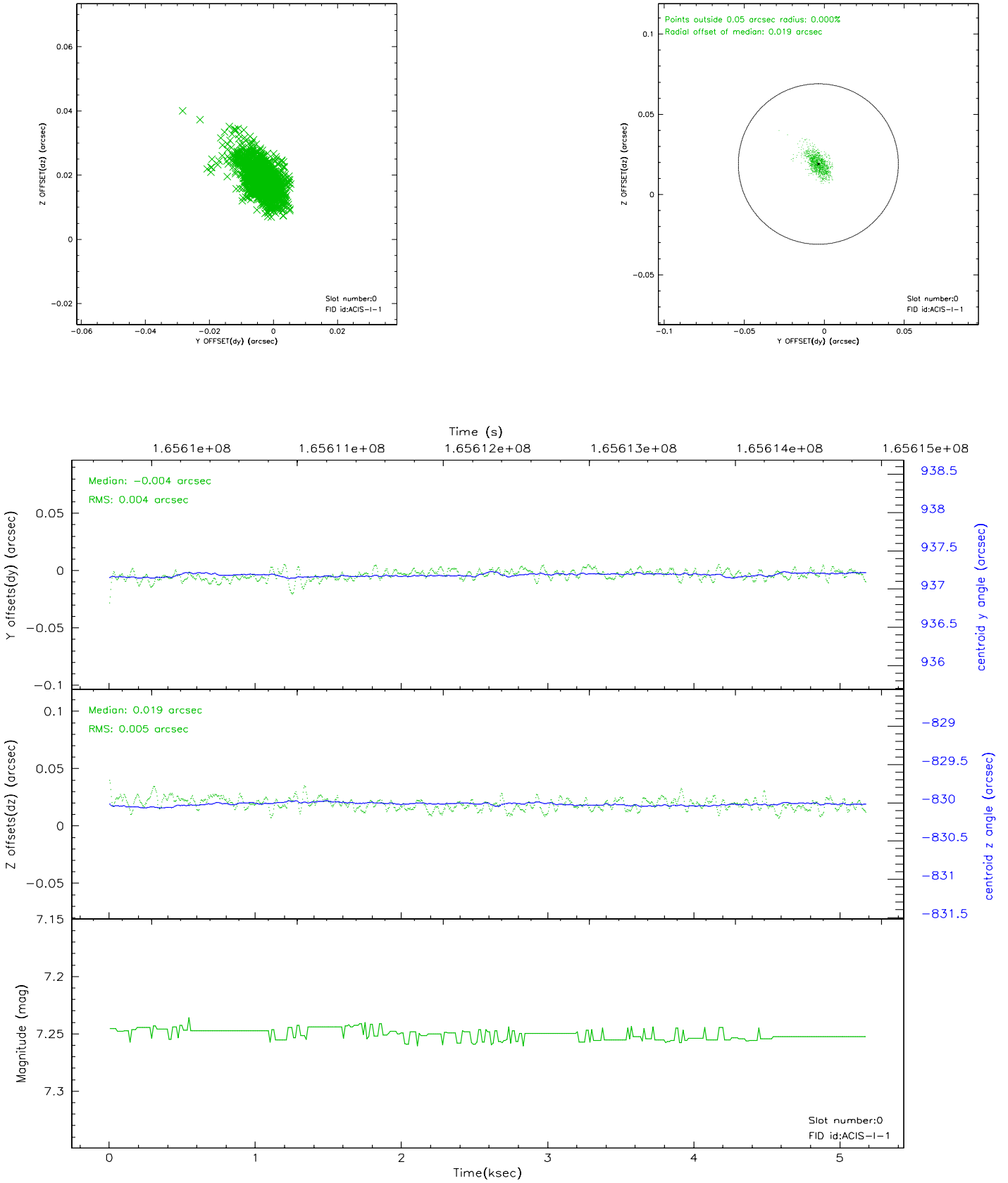


2.4.5 Slot 7

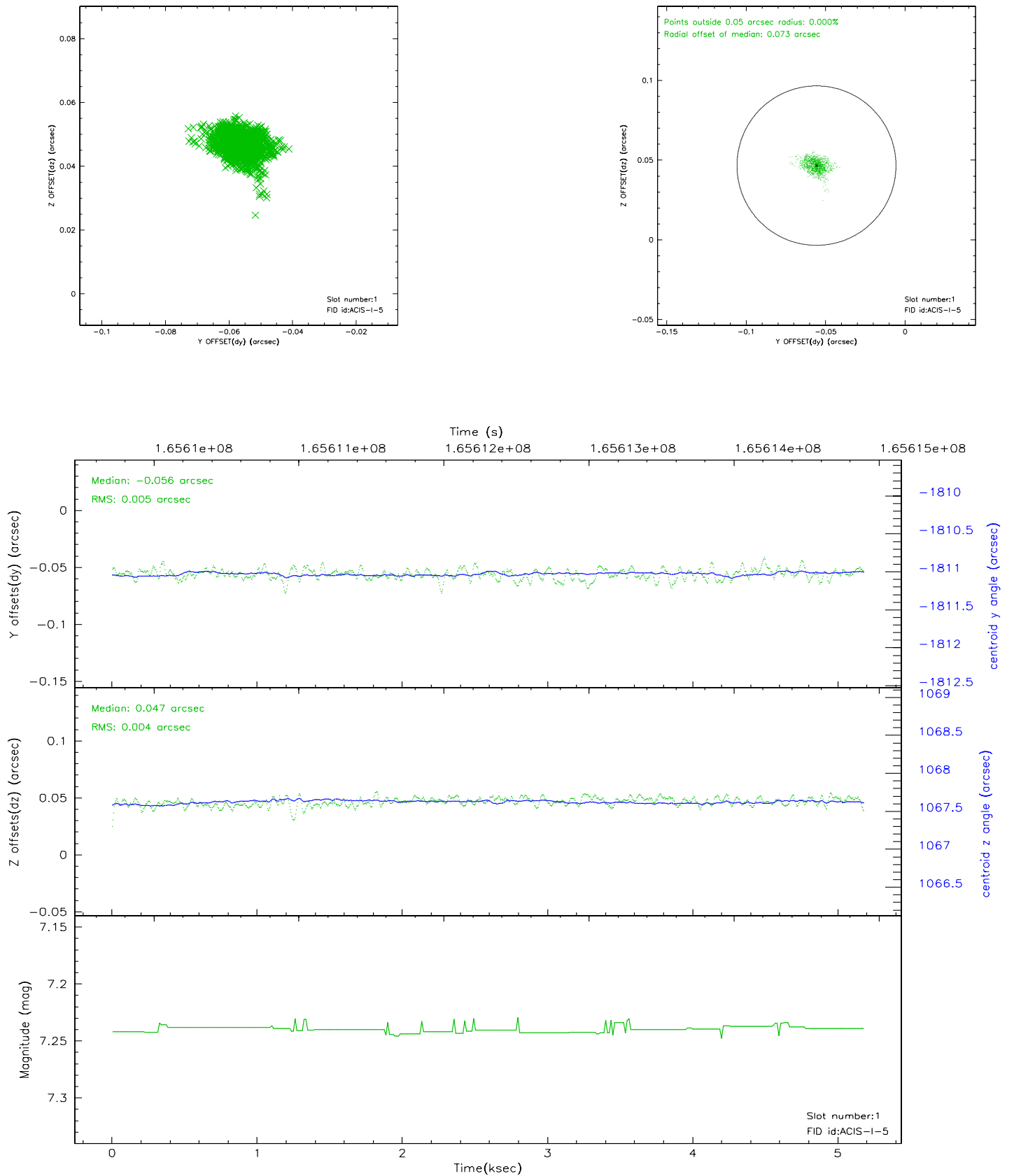


2.5 FID Slots

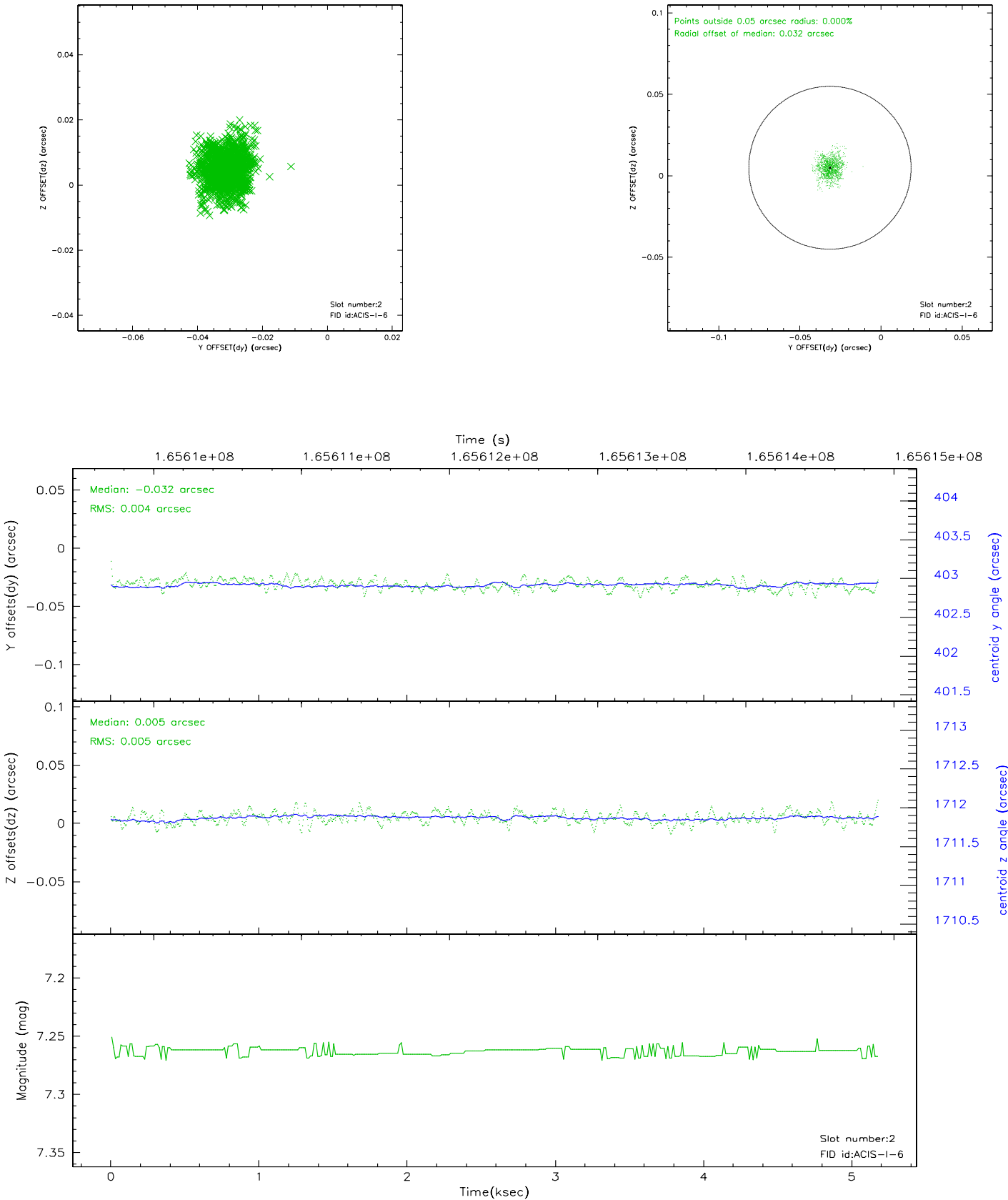
2.5.1 Slot 0



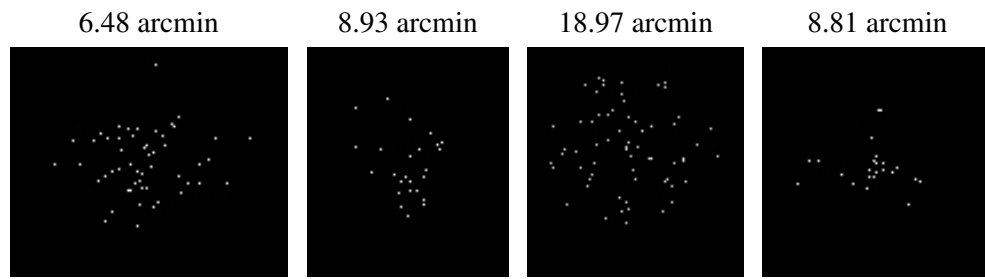
2.5.2 Slot 1



2.5.3 Slot 2



3 Point Sources



A Summary

A.1 Status

V&V Scientist	Jen Lauer
V&V Date (YYYY-MM-DD)	2006.07.30
V&V Edition	1
V&V Disposition and Status	OK
V&V Charge Time	4.777

A.2 Comments