

V&V Reference Report

L2 ASCDS Version : 7.6.8

Observation 4180 - L2 Version 001
Chandra X-Ray Center

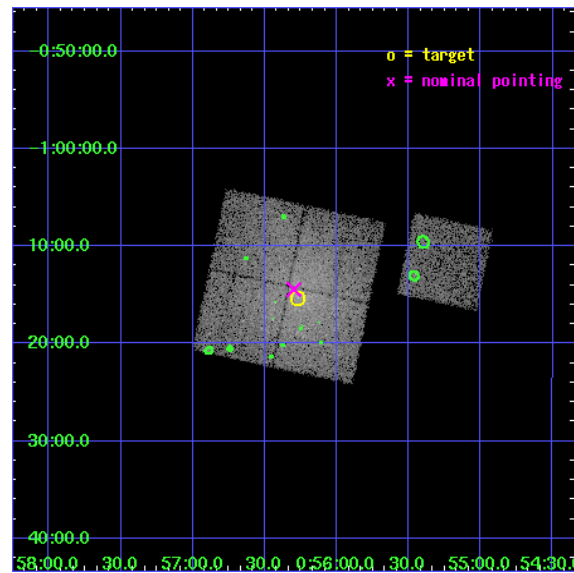
L2 Processing Date : Jul 5 2006

Contents

1	Front	2
2	OBI	3
2.1	OBI	3
2.1.1	Images	3
2.1.2	Bias	3
2.1.3	Parameters	4
2.1.4	Events	4
2.2	Compared Parameters	5
2.3	Aspect	6
2.4	Star Slots	9
2.4.1	Slot 3	9
2.4.2	Slot 4	10
2.4.3	Slot 5	11
2.4.4	Slot 6	12
2.4.5	Slot 7	13
2.5	FID Slots	14
2.5.1	Slot 0	14
2.5.2	Slot 1	15
2.5.3	Slot 2	16
3	Point Sources	17
A	Summary	18
A.1	Status	18
A.2	Comments	18

1 Front

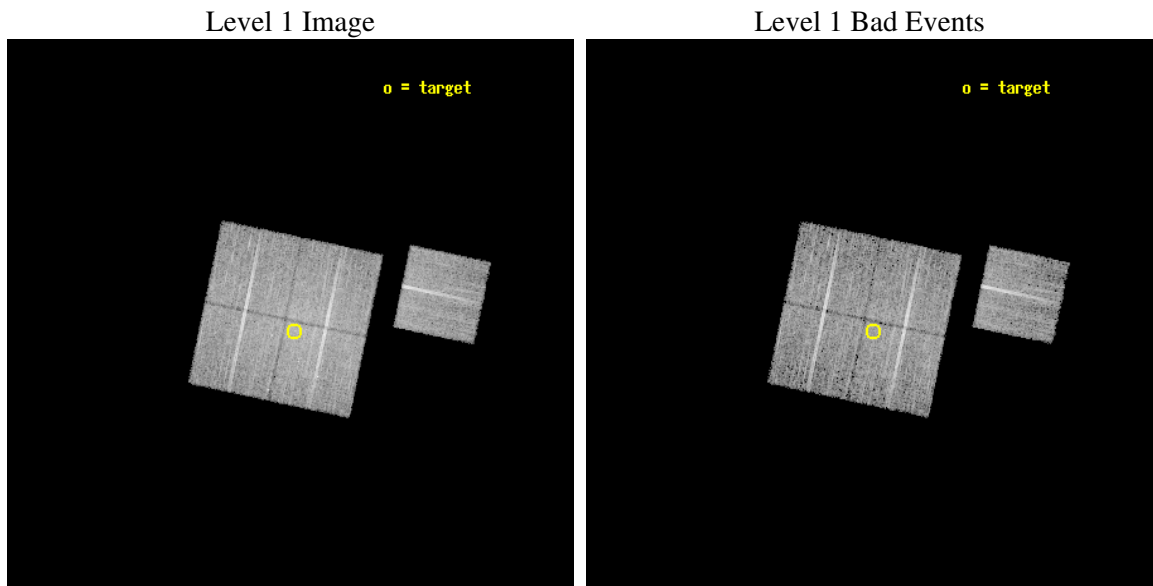
seq_num	800336
obs_id	4180
title	THE HIFLUGCS CLUSTER SURVEY: A CORNERSTONE FOR COSMOLOGY
observer	Dr. Craig Sarazin
object	A0119
dtcycle	0
cycle	P
ra_targ	14.067208
dec_targ	-1.255111
ra_nom	14.074543411221
dec_nom	-1.2406919816701
roll_nom	101.89805412887
revision	2
ontime	12089.918016285
livetime	11931.954336934
ontime0	12093.05897662
ontime1	12093.058996528
ontime2	12093.058996499
ontime3	12089.918016285
ontime6	12093.058996499
l2events	66301



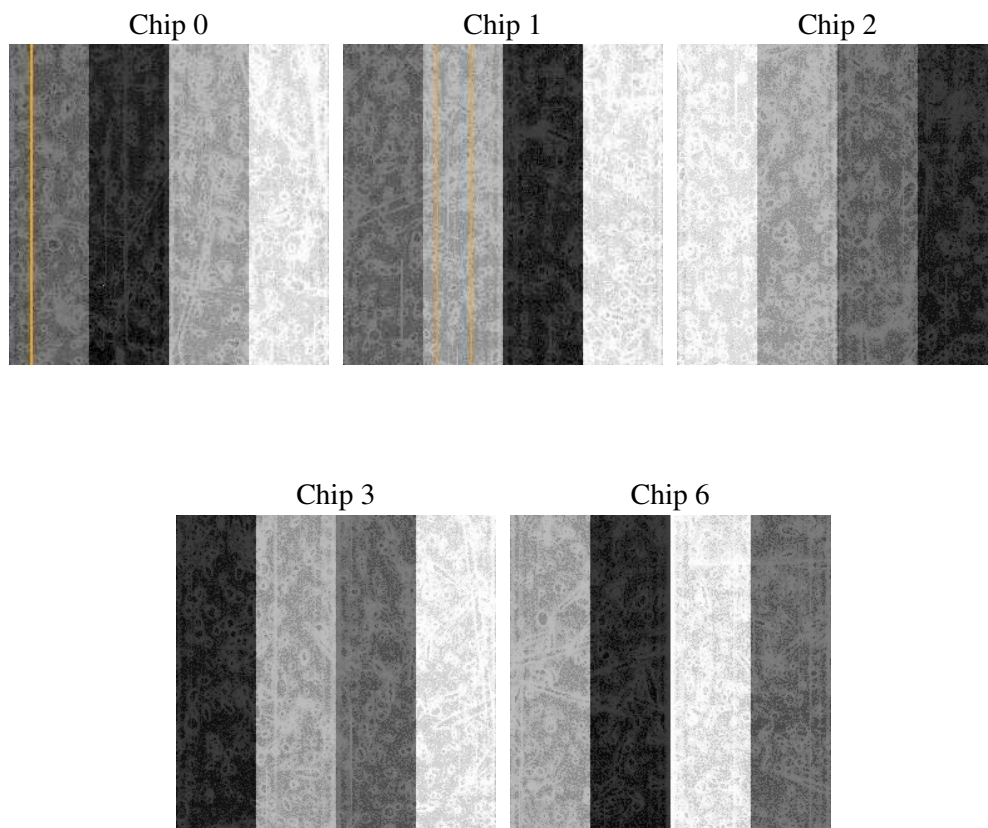
2 OBI

2.1 OBI

2.1.1 Images



2.1.2 Bias



2.1.3 Parameters

obi_num	0
ascdsver	7.6.8
caldbver	3.2.2
date	2006-07-06T01:18:19
revision	2

sched_exp_time	11976.859000
ontime	12096.033738196
ontime0	12099.174698532
ontime1	12099.17471844
ontime2	12099.17471841
ontime3	12096.033738196
ontime6	12099.17471841
l1events	355645

2.1.4 Events

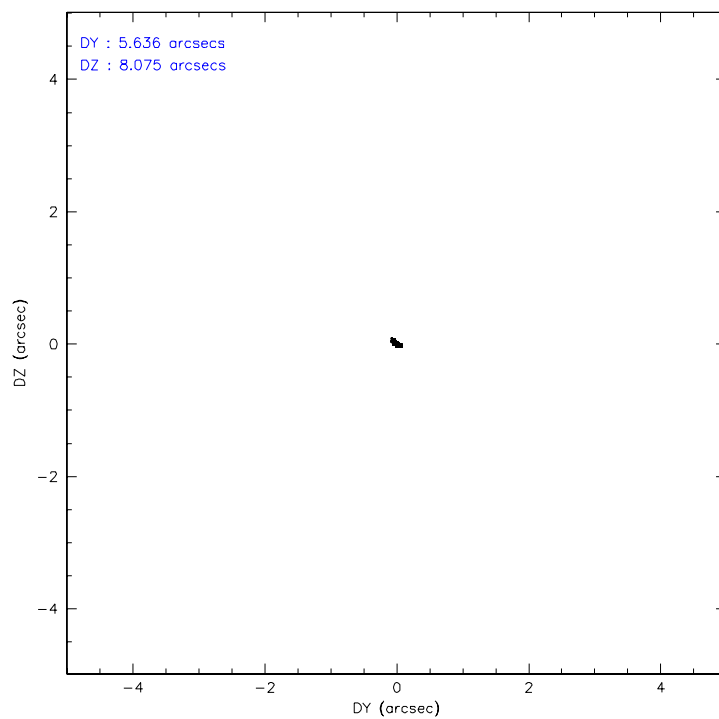
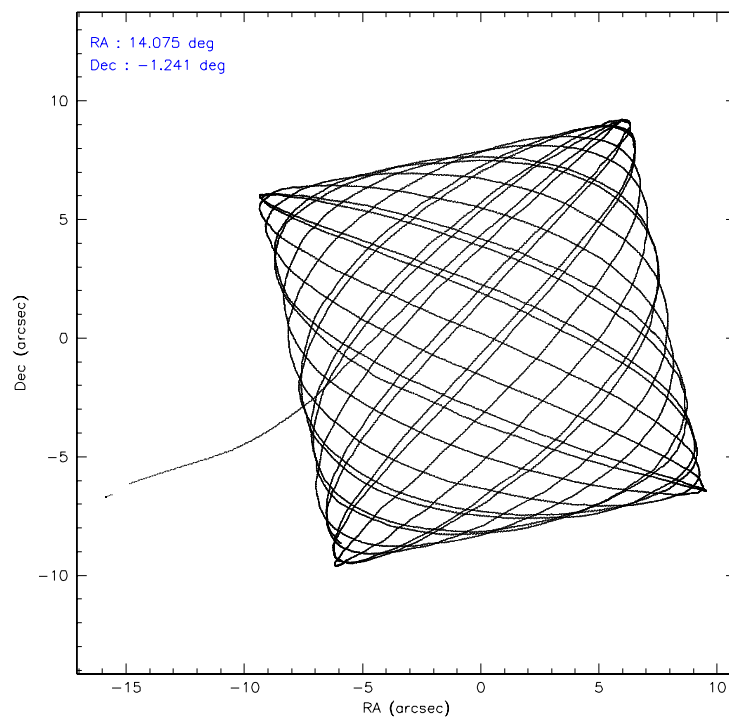
	ccd 0	ccd 1	ccd 2	ccd 3	ccd 6
level 1 events	67790	68375	75086	77988	66406
rejected events	53775	52616	58871	58593	57868
rejected %	79%	76%	78%	75%	87%

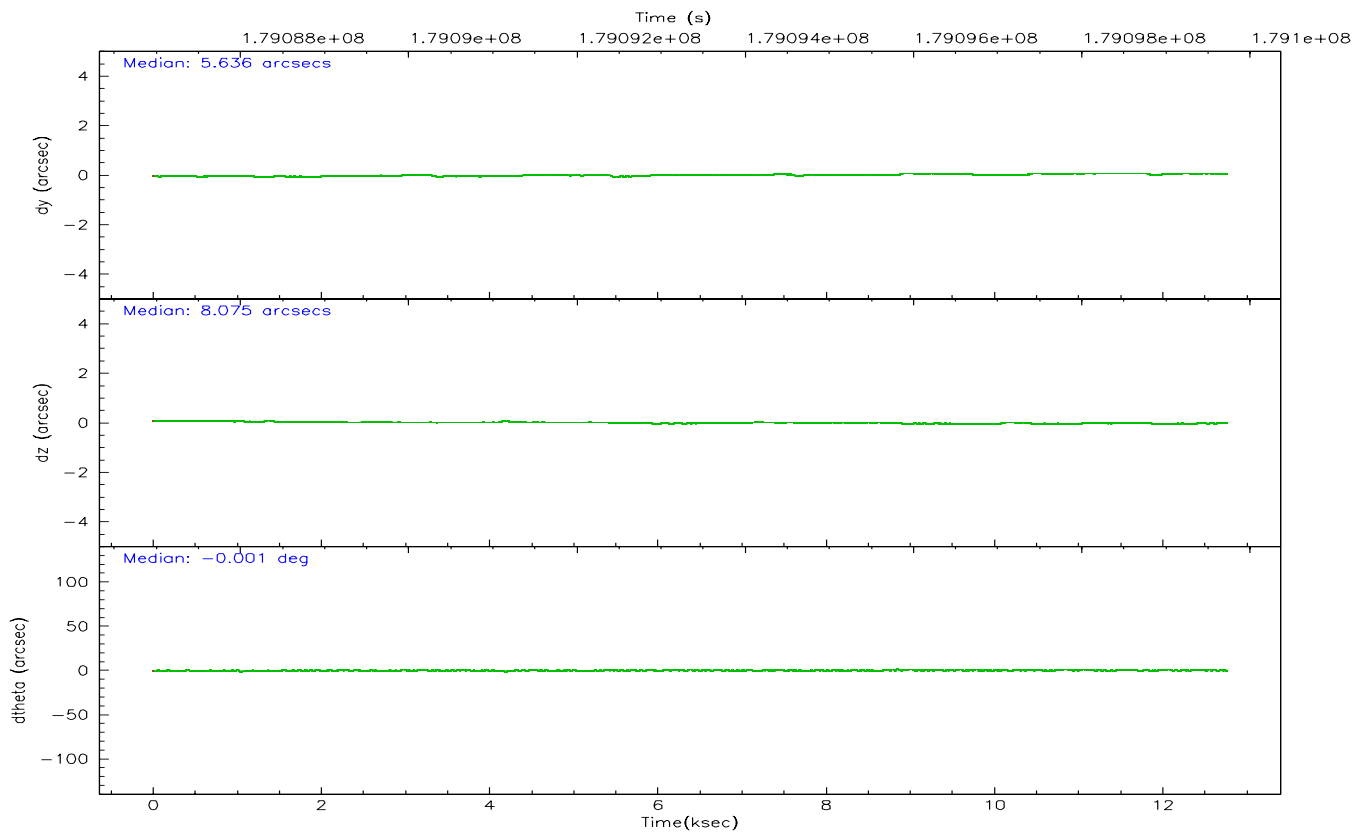
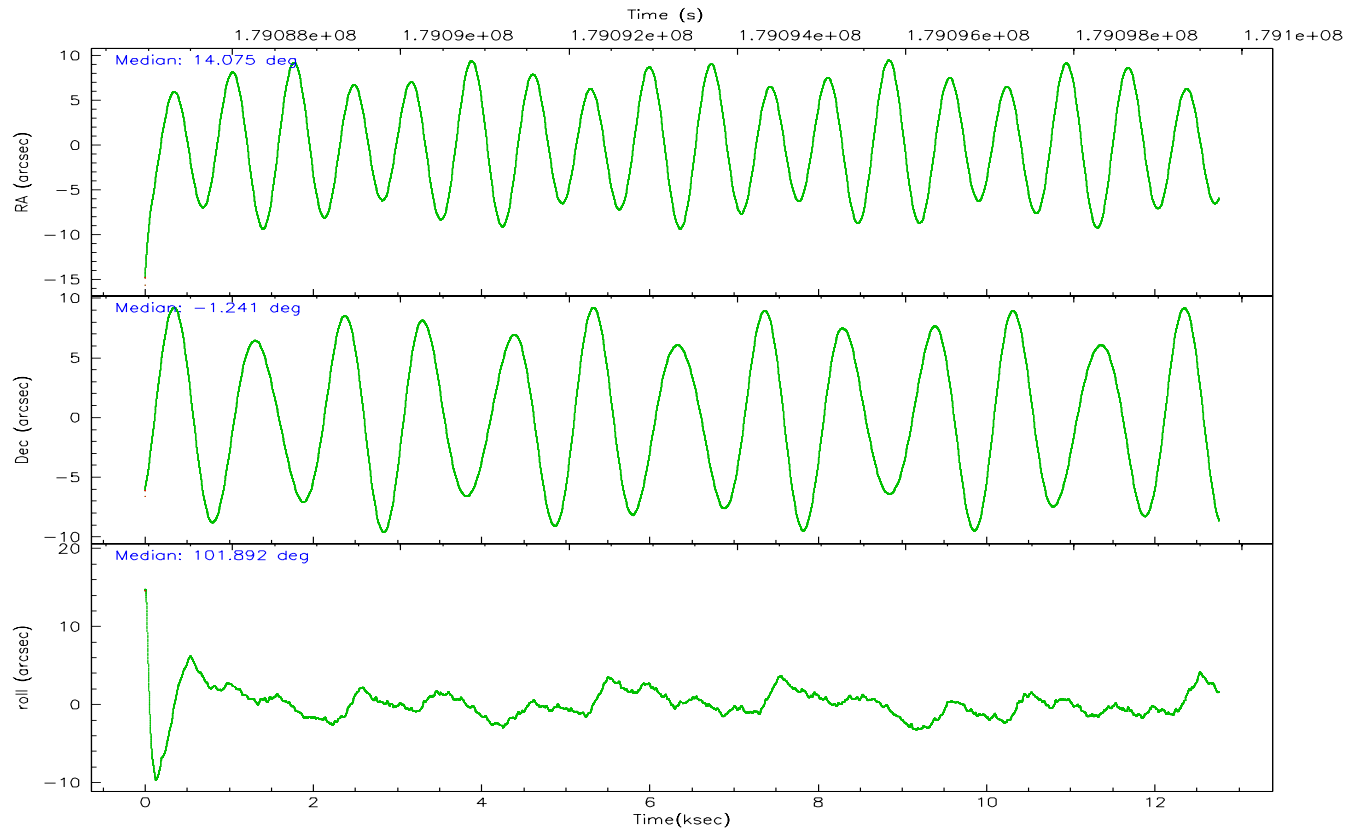
	ccd 0	ccd 1	ccd 2	ccd 3	ccd 6
grade 0 events	8518	9807	10434	13223	4116
	12%	14%	13%	16%	6%
grade 1 events	47	44	64	69	30
	0%	0%	0%	0%	0%
grade 2 events	2223	2367	2398	2502	1584
	3%	3%	3%	3%	2%
grade 3 events	991	1015	1038	1098	783
	1%	1%	1%	1%	1%
grade 4 events	926	1023	1020	1110	783
	1%	1%	1%	1%	1%
grade 5 events	2197	2434	2033	2515	2384
	3%	3%	2%	3%	3%
grade 6 events	1365	1558	1332	1467	1276
	2%	2%	1%	1%	1%
grade 7 events	51523	50127	56767	56004	55450
	76%	73%	75%	71%	83%

2.2 Compared Parameters

Parameter	Planned	Actual	Parameter	Planned	Actual
Instrument	ACIS	ACIS	Obspar format version number	6	6
Detector	ACIS-01236	ACIS-01236	Obspar file type	PREDICTED	ACTUAL
Grating	NONE	NONE	Obspar update status	NONE	UPDATED
Data mode	VFAINT	VFAINT	On-chip summing requested	N	N
Observation mode	POINTING	POINTING	Subarray requested	NONE	NONE
Pointing RA	14.092943	14.07454341122077	Alternating exposures requested	N	N
Pointing Dec	-1.261024	-1.240691981670077	Primary exposure time	0.000000	3.1
Pointing Roll	101.689742	101.8980541288654			
SIM focus pos (mm)	-0.782348	-0.7809083437167272			
SIM defocus (mm)	0	0.001439871863259334			
SIM translation stage pos (mm)	-233.592463	-233.5874344608287			
SIM translation stage offset (mm)	0	-0.005018542100998502			
Observation start time	179087748.184000	179086487.1444			
Observation start date	2003-09-04T18:34:44	2003-09-04T18:14:47			
Observation end time	179099725.184000	179100040.20748			
Observation end date	2003-09-04T21:54:21	2003-09-04T22:00:40			
Read mode	TIMED	TIMED			

2.3 Aspect



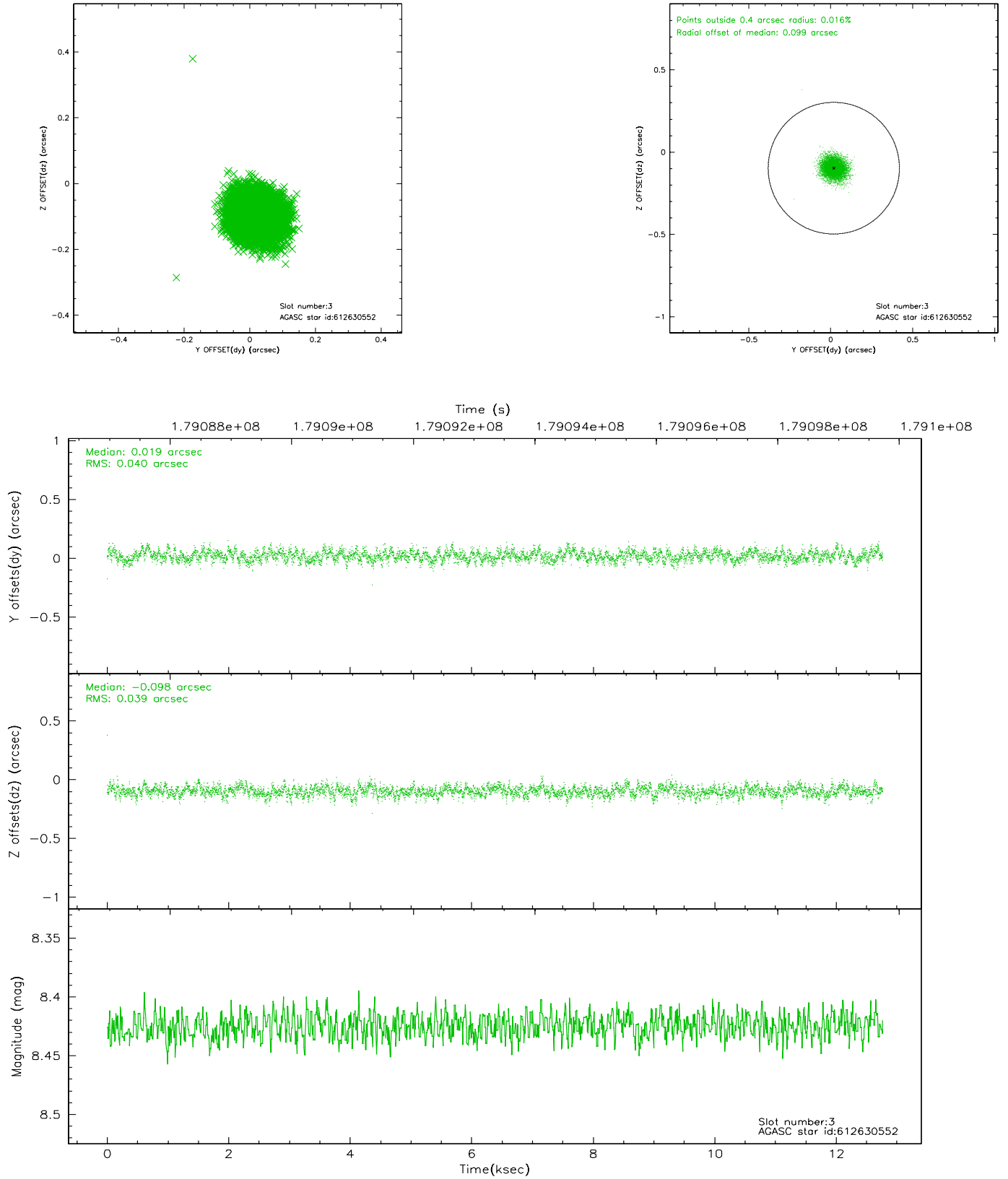


Slot Statistics

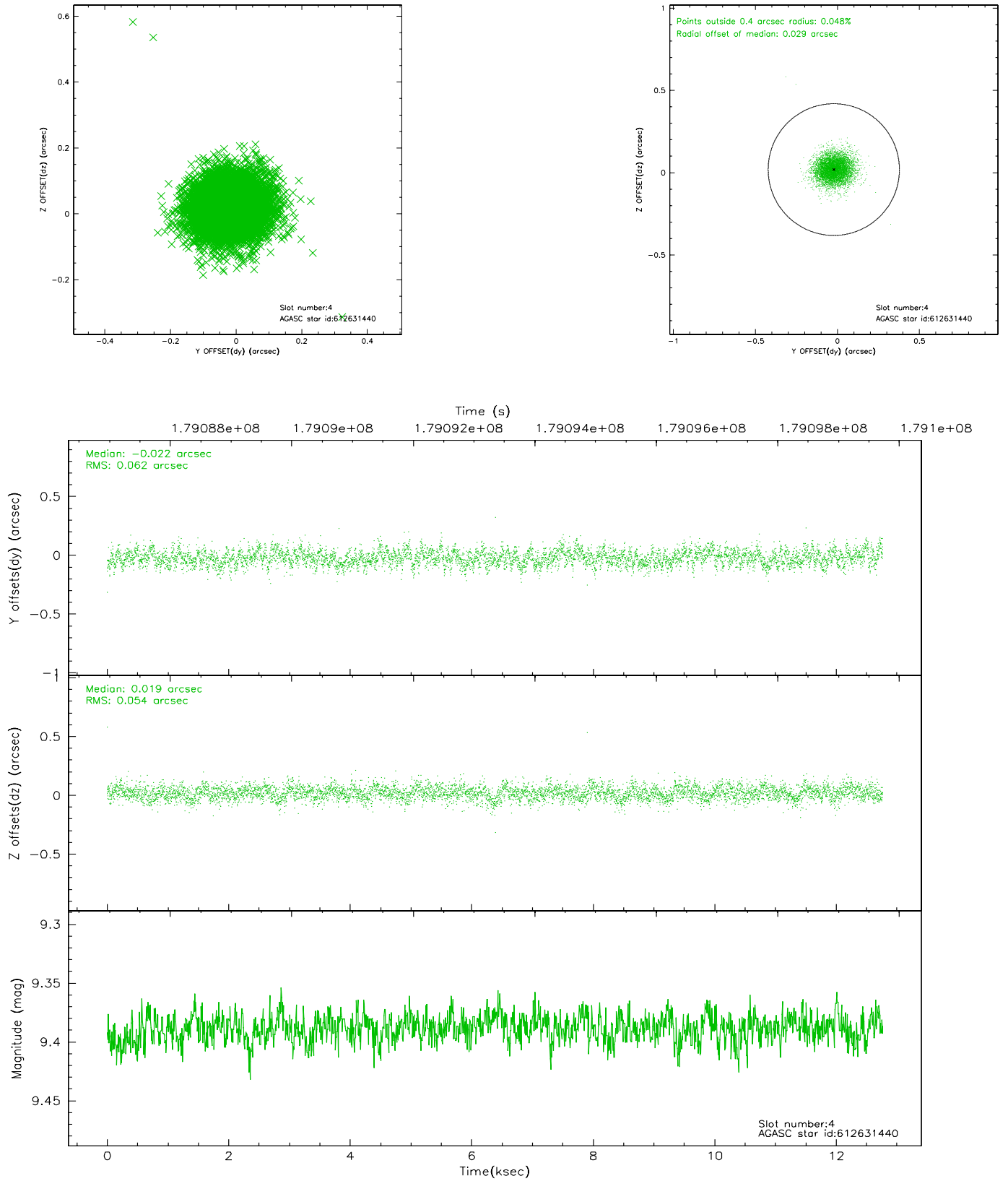
slot	status	id	mag	n_pts	med_dy	med_dz	dr1	dr2	ra	dec	mean_y	mean_z
0	FID	ACIS-I-1	7.24	3115	0.005	0.056	0.006	0.011	0.000000	0.000000	934.08	-831.45
1	FID	ACIS-I-5	7.23	3115	-0.109	0.050	0.006	0.010	0.000000	0.000000	-1813.91	1065.87
2	FID	ACIS-I-6	7.26	3115	0.013	-0.036	0.006	0.010	0.000000	0.000000	399.24	1710.70
3	GUIDE	612630552	8.42	6228	0.019	-0.098	0.059	0.096	13.806949	-1.503313	-645.73	1184.33
4	GUIDE	612631440	9.39	6218	-0.022	0.019	0.086	0.141	13.345518	-0.775803	2255.16	2281.42
5	GUIDE	612637576	8.96	6227	-0.137	0.193	0.062	0.101	14.501240	-0.747907	1511.55	-1812.81
6	GUIDE	612638048	8.81	6227	-0.062	-0.133	0.063	0.103	13.944560	-0.794877	1751.76	182.75
7	GUIDE	612639400	9.36	6225	0.201	0.021	0.079	0.134	14.334247	-1.816006	-2132.30	-444.59

2.4 Star Slots

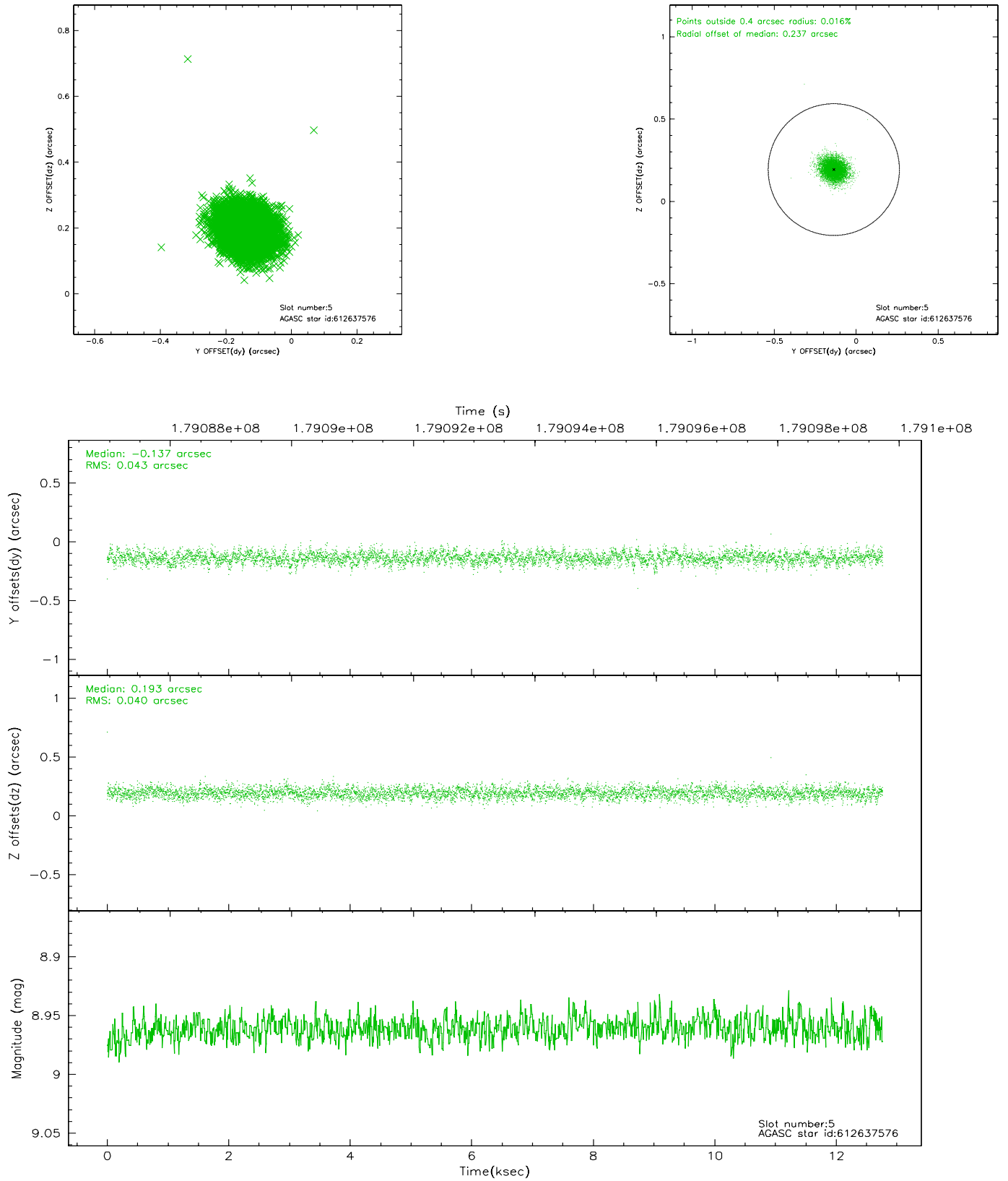
2.4.1 Slot 3



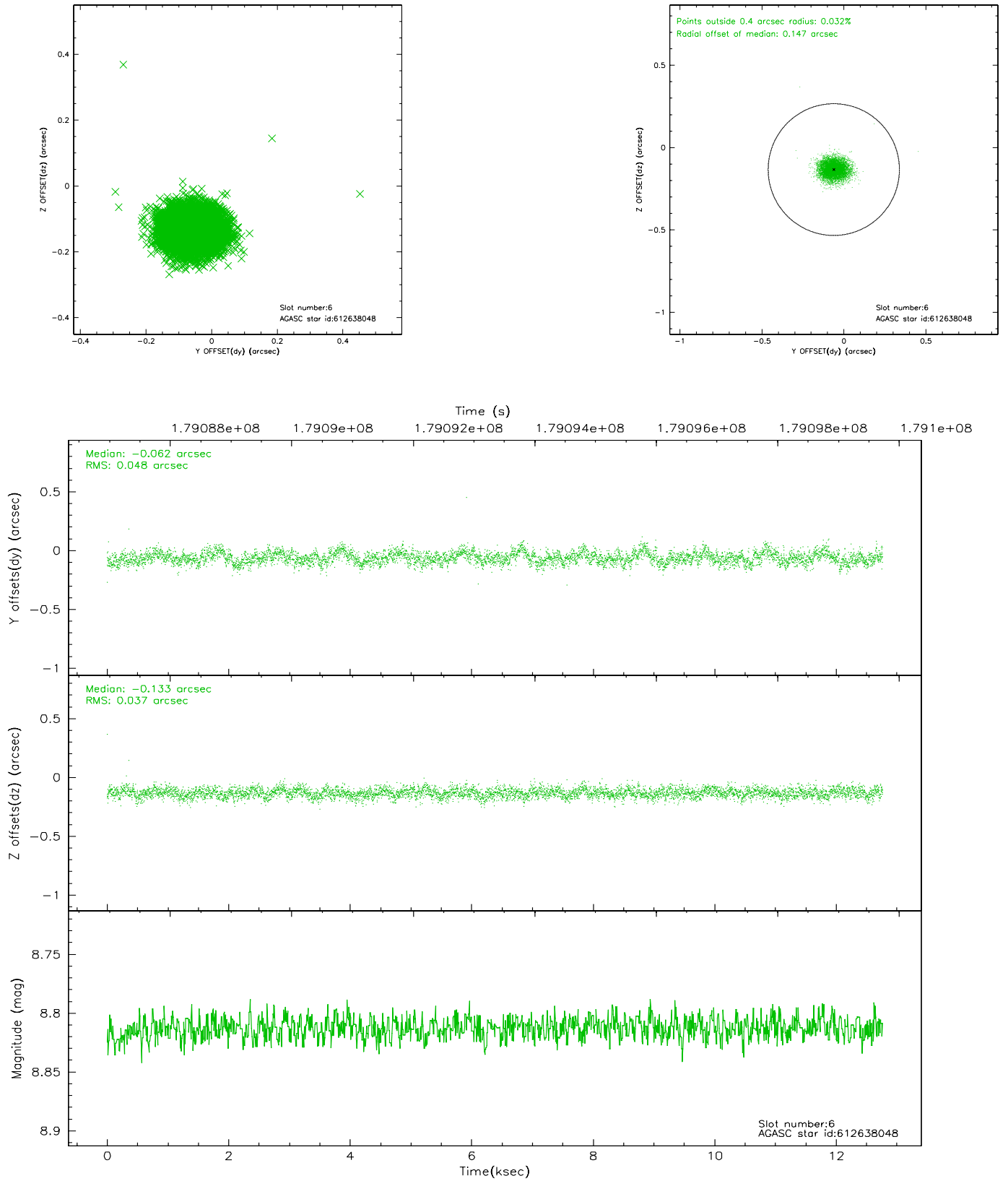
2.4.2 Slot 4



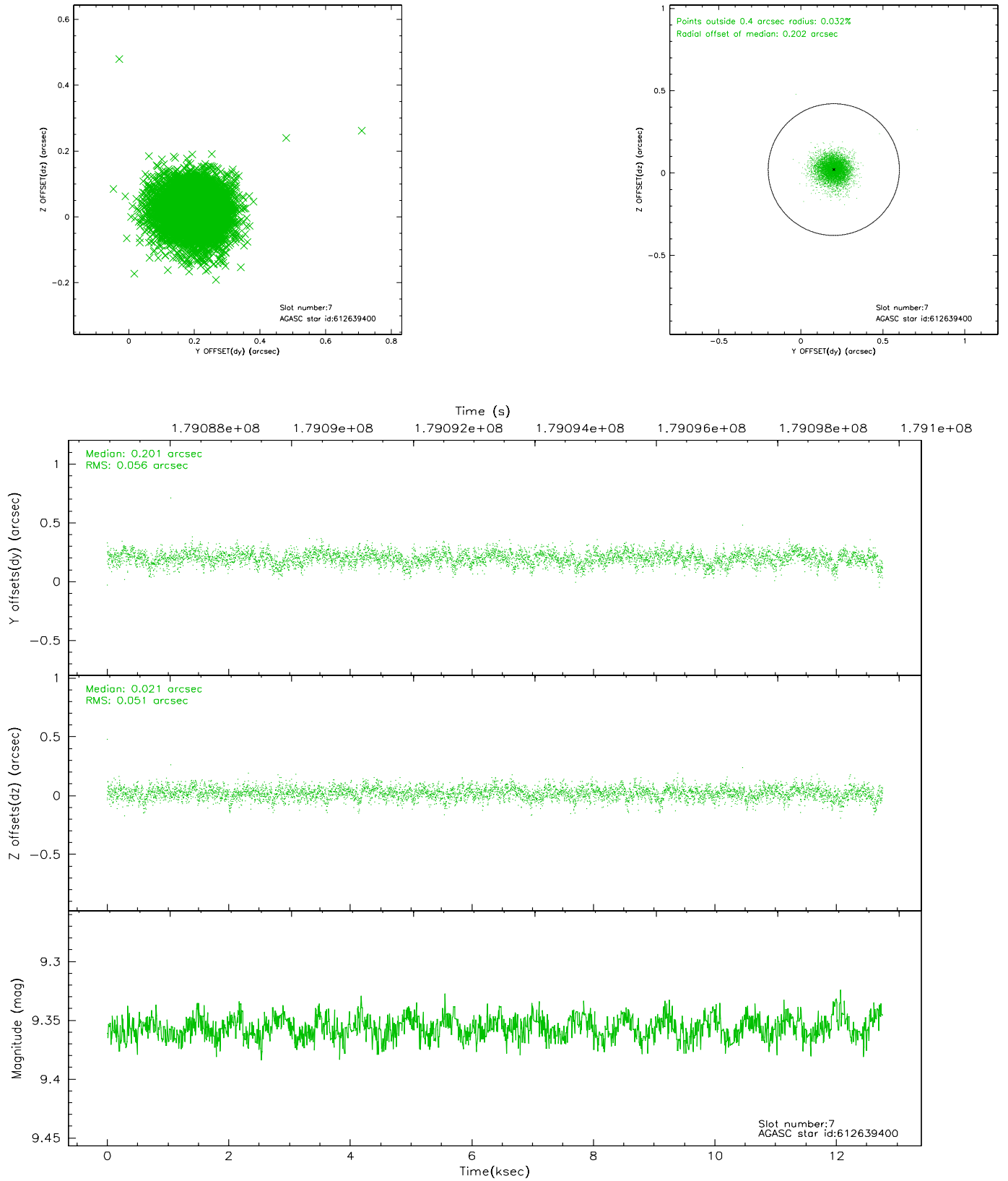
2.4.3 Slot 5



2.4.4 Slot 6

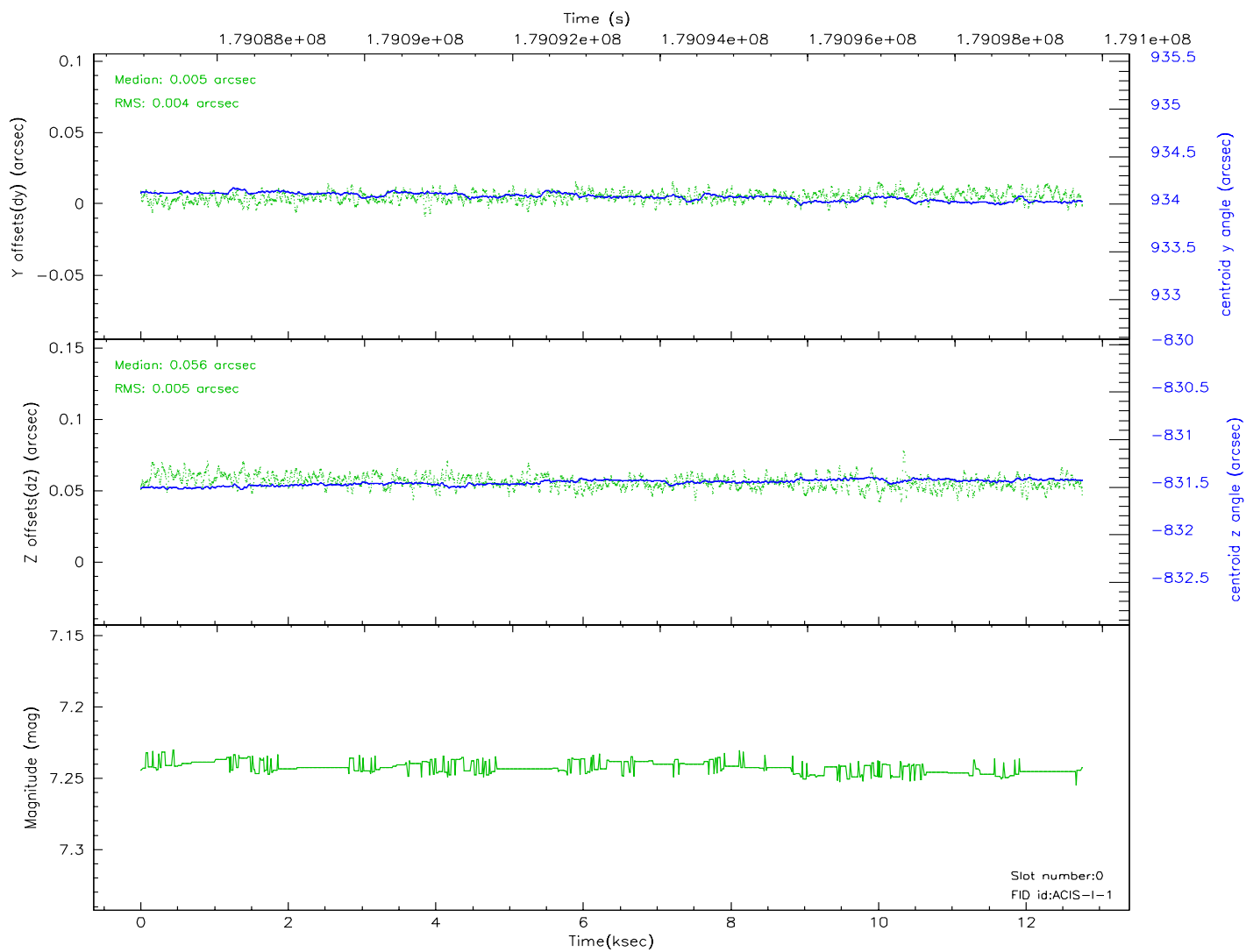
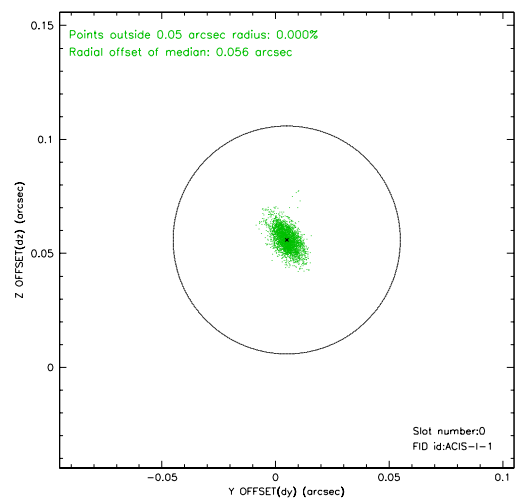
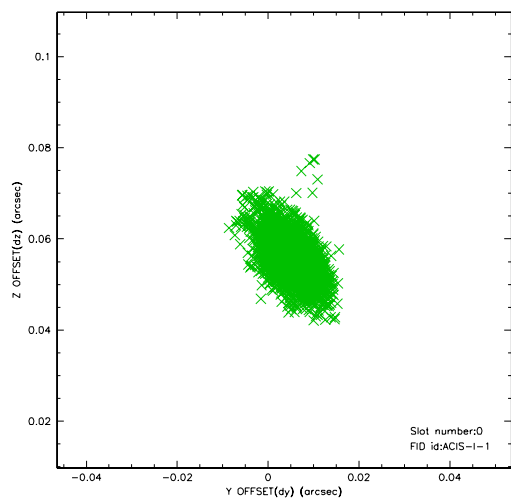


2.4.5 Slot 7

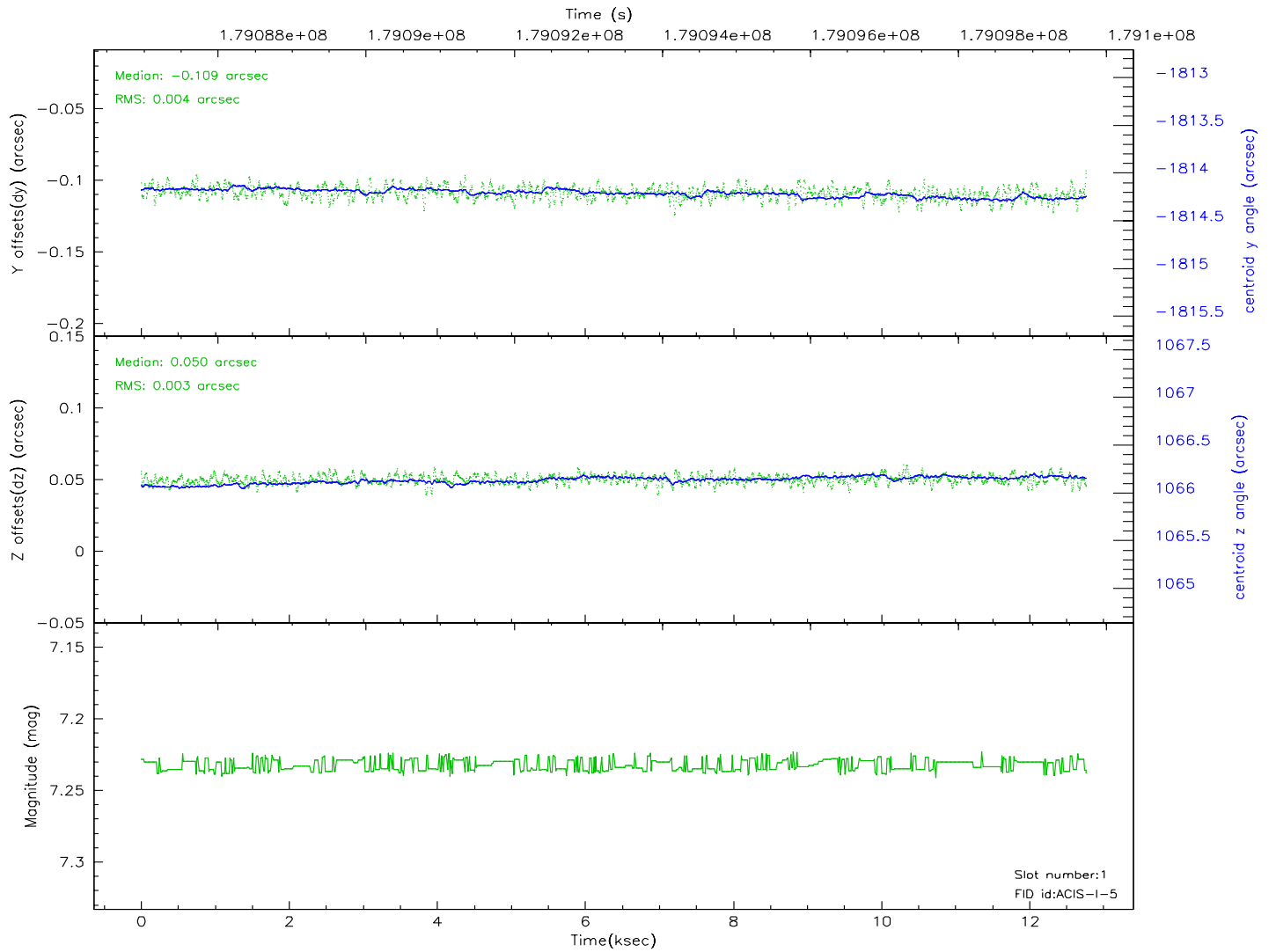
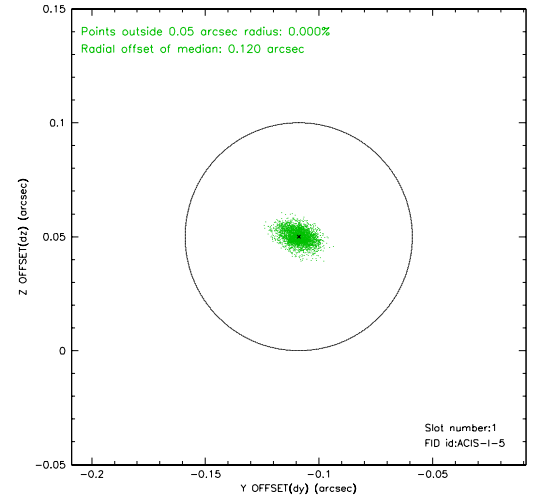
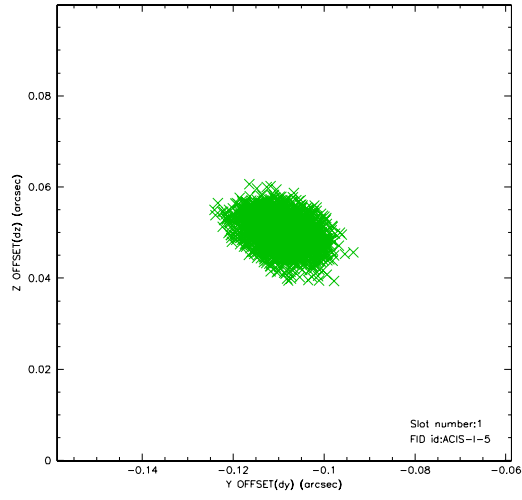


2.5 FID Slots

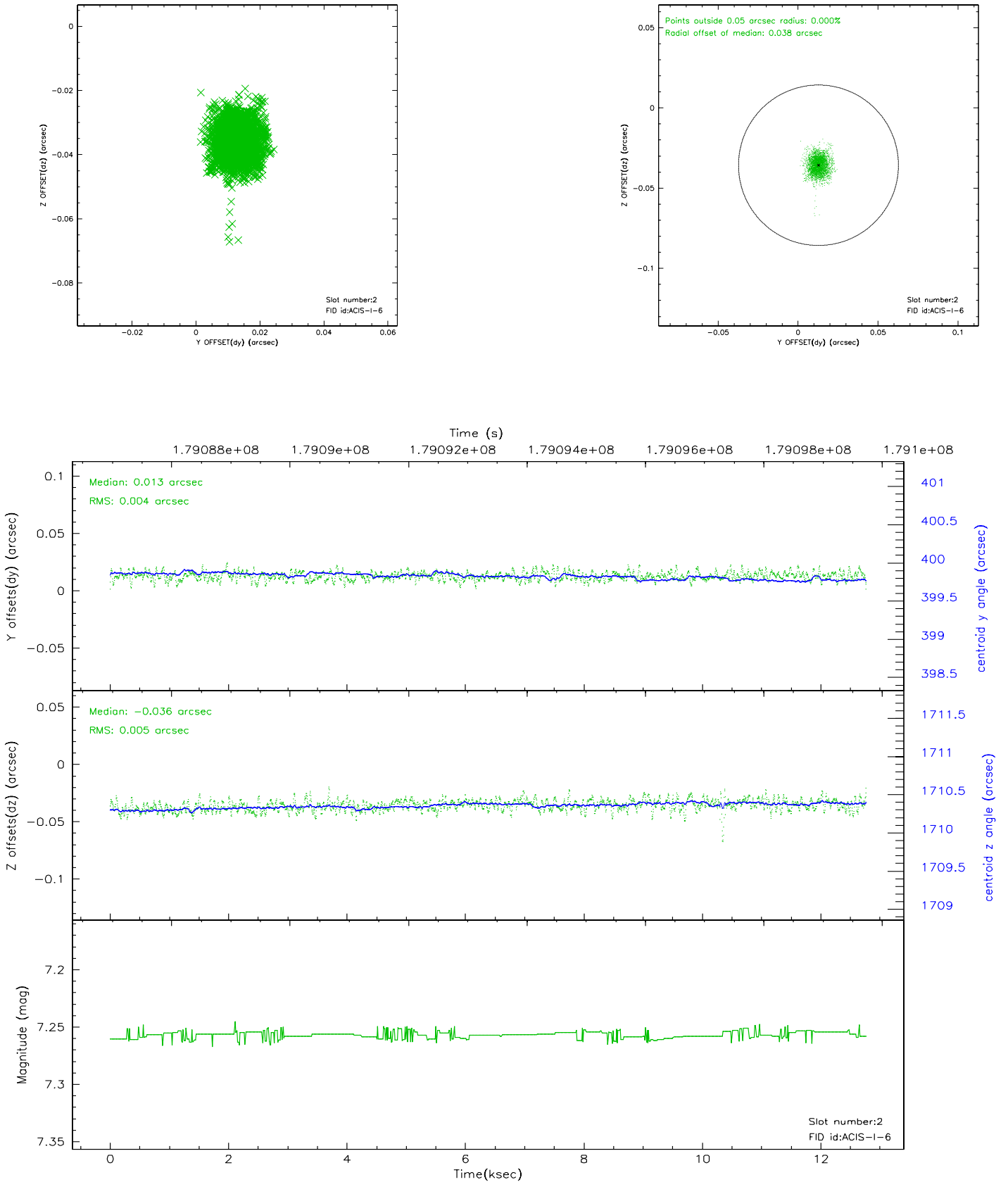
2.5.1 Slot 0



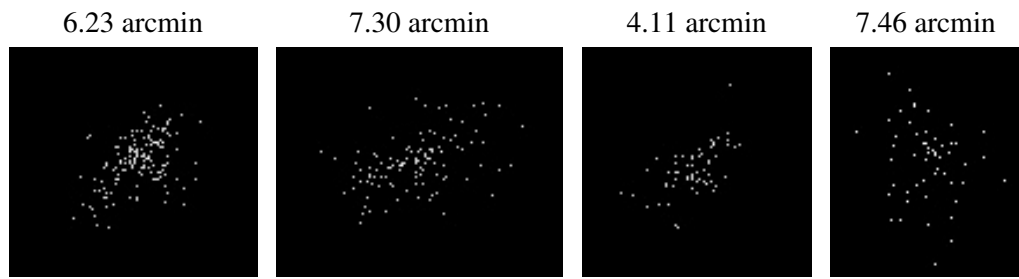
2.5.2 Slot 1



2.5.3 Slot 2



3 Point Sources



A Summary

A.1 Status

V&V Scientist	Jen Lauer
V&V Date (YYYY-MM-DD)	2006.07.06
V&V Edition	1
V&V Disposition and Status	OK
V&V Charge Time	12.089

A.2 Comments