

V&V Reference Report

L2 ASCDS Version : 7.6.8

Observation 4170 - L2 Version 001
Chandra X-Ray Center

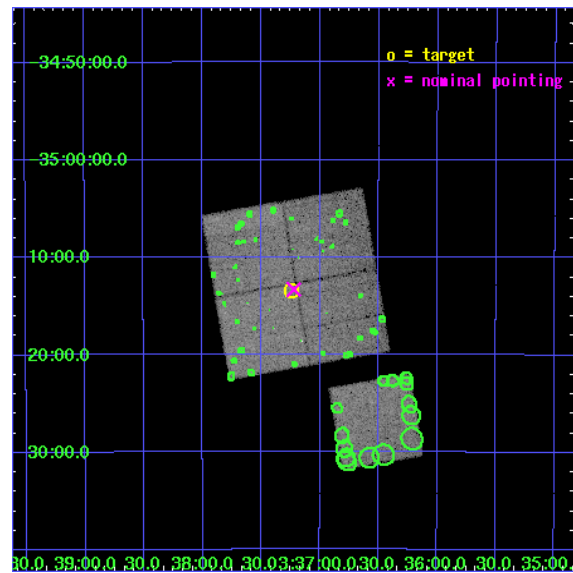
L2 Processing Date : Aug 3 2006

Contents

1	Front	2
2	OBI	3
2.1	OBI	3
2.1.1	Images	3
2.1.2	Bias	3
2.1.3	Parameters	4
2.1.4	Events	4
2.2	Compared Parameters	5
2.3	Aspect	6
2.4	Star Slots	9
2.4.1	Slot 3	9
2.4.2	Slot 4	10
2.4.3	Slot 5	11
2.4.4	Slot 6	12
2.4.5	Slot 7	13
2.5	FID Slots	14
2.5.1	Slot 0	14
2.5.2	Slot 1	15
2.5.3	Slot 2	16
3	Point Sources	17
A	Summary	18
A.1	Status	18
A.2	Comments	18

1 Front

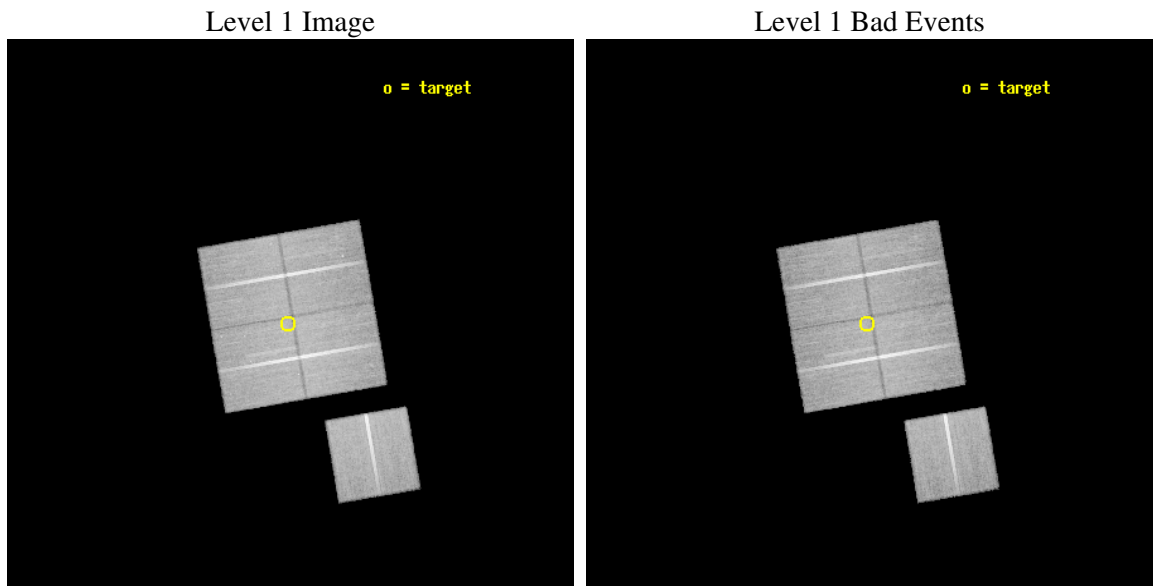
seq_num	800326
obs_id	4170
title	SURVEYING THE FORNAX CLUSTER OF GALAXIES
observer	Dr Caleb Scharf
object	FORNAX CLUSTER
dtcycle	0
cycle	P
ra_targ	54.30999
dec_targ	-35.2244
ra_nom	54.305237876259
dec_nom	-35.221892480304
roll_nom	170.20594257595
revision	2
ontime	45182.41796273
livetime	44592.076409235
ontime0	45185.558952868
ontime1	45185.558922976
ontime2	45185.558922976
ontime3	45182.41796273
ontime6	45179.277032465
l2events	131926



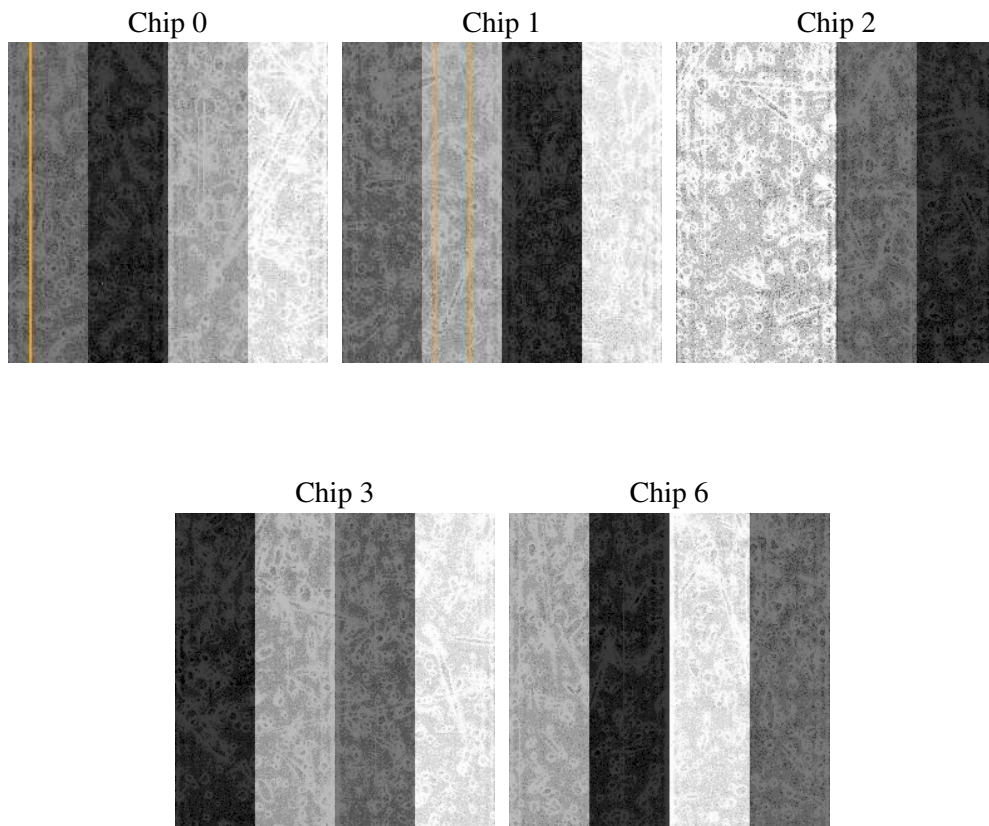
2 OBI

2.1 OBI

2.1.1 Images



2.1.2 Bias



2.1.3 Parameters

obi_num	0
ascdsver	7.6.8
caldbver	3.2.2
date	2006-08-03T03:32:59
revision	2

sched_exp_time	45416.986000
ontime	45186.429905653
ontime0	45189.570895791
ontime1	45189.570865899
ontime2	45189.570865899
ontime3	45186.429905653
ontime6	45186.429975569
l1events	1237184

2.1.4 Events

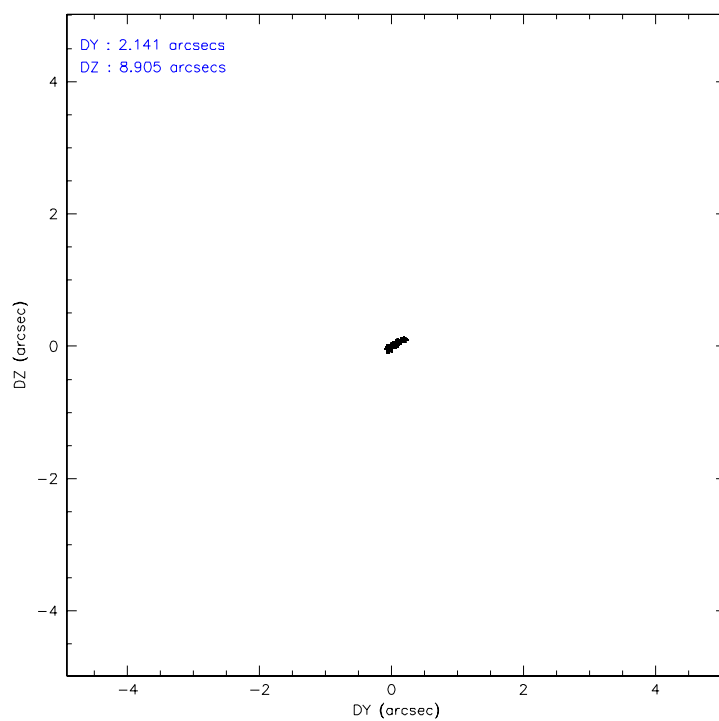
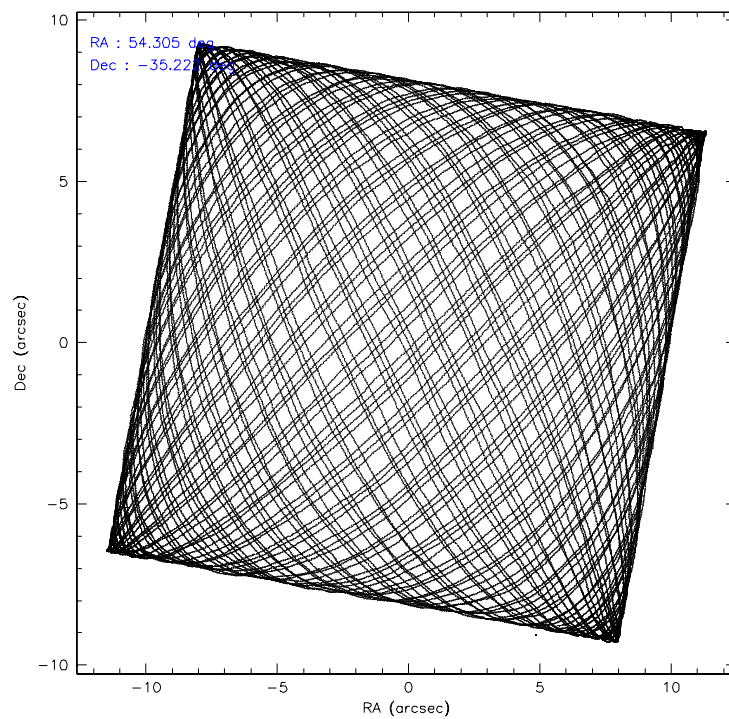
	ccd 0	ccd 1	ccd 2	ccd 3	ccd 6
level 1 events	230550	241194	259502	257662	248276
rejected events	202426	206706	230944	223806	218979
rejected %	87%	85%	88%	86%	88%

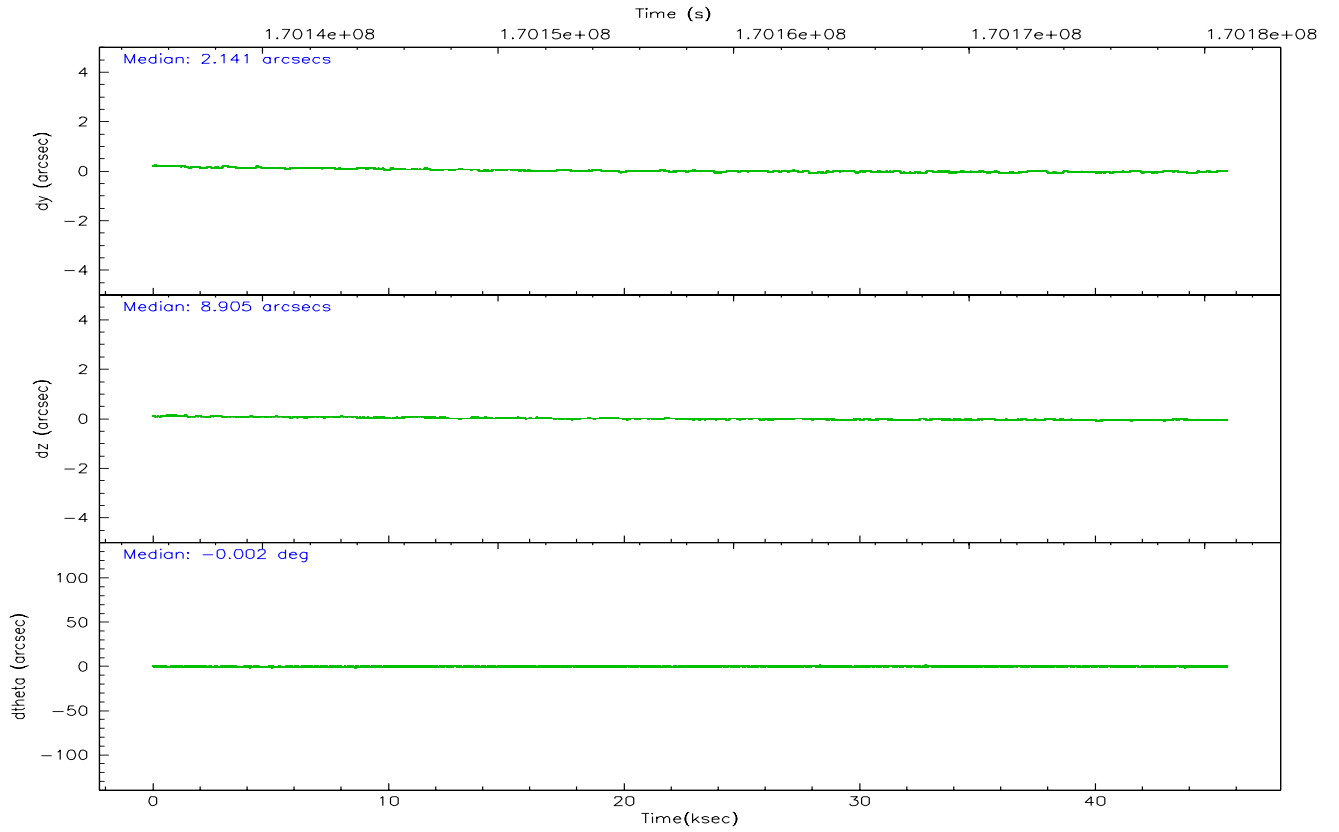
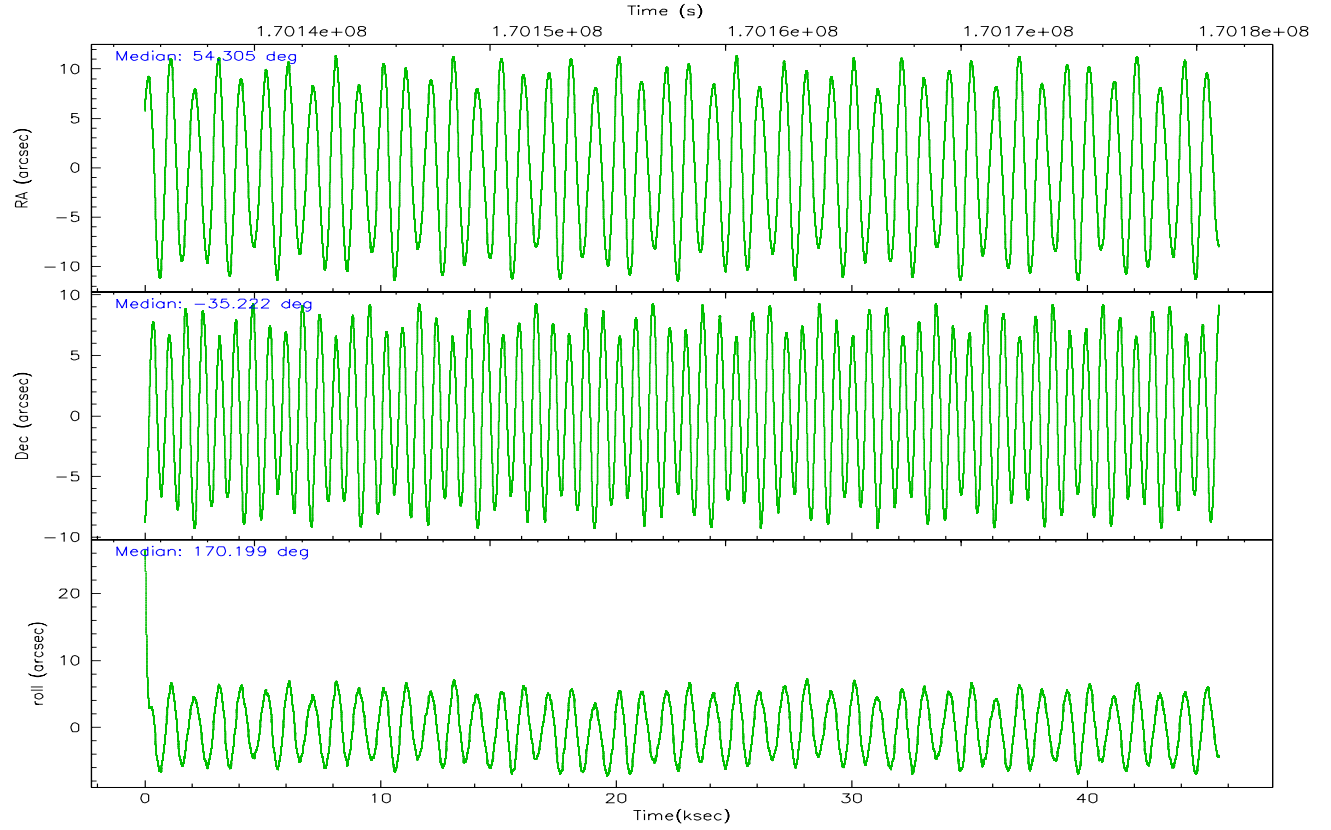
	ccd 0	ccd 1	ccd 2	ccd 3	ccd 6
grade 0 events	11773	16110	12621	17349	12355
	5%	6%	4%	6%	4%
grade 1 events	106	121	135	175	109
	0%	0%	0%	0%	0%
grade 2 events	5845	6169	6039	5769	5558
	2%	2%	2%	2%	2%
grade 3 events	3056	3338	2776	2994	3065
	1%	1%	1%	1%	1%
grade 4 events	2760	3277	2747	2985	2885
	1%	1%	1%	1%	1%
grade 5 events	8340	9030	7917	9553	9186
	3%	3%	3%	3%	3%
grade 6 events	4690	5596	4379	4760	5435
	2%	2%	1%	1%	2%
grade 7 events	193980	197553	222888	214077	209683
	84%	81%	85%	83%	84%

2.2 Compared Parameters

Parameter	Planned	Actual	Parameter	Planned	Actual
Instrument	ACIS	ACIS	Obspar format version number	6	6
Detector	ACIS-01236	ACIS-01236	Obspar file type	PREDICTED	ACTUAL
Grating	NONE	NONE	Obspar update status	NONE	UPDATED
Data mode	VFAINT	VFAINT	On-chip summing requested	N	N
Observation mode	POINTING	POINTING	Subarray requested	NONE	NONE
Pointing RA	54.336620	54.30523787625932	Alternating exposures requested	N	N
Pointing Dec	-35.212328	-35.2218924803041	Primary exposure time	0.000000	3.1
Pointing Roll	170.015359	170.2059425759542			
SIM focus pos (mm)	-0.782348	-0.7809083437167272			
SIM defocus (mm)	0	0.001439871863259334			
SIM translation stage pos (mm)	-233.592463	-233.5874344608287			
SIM translation stage offset (mm)	0	-0.005018542100998502			
Observation start time	170135533.184000	170135157.15053			
Observation start date	2003-05-24T03:51:09	2003-05-24T03:45:57			
Observation end time	170180950.184000	170181264.72748			
Observation end date	2003-05-24T16:28:06	2003-05-24T16:34:24			
Read mode	TIMED	TIMED			

2.3 Aspect



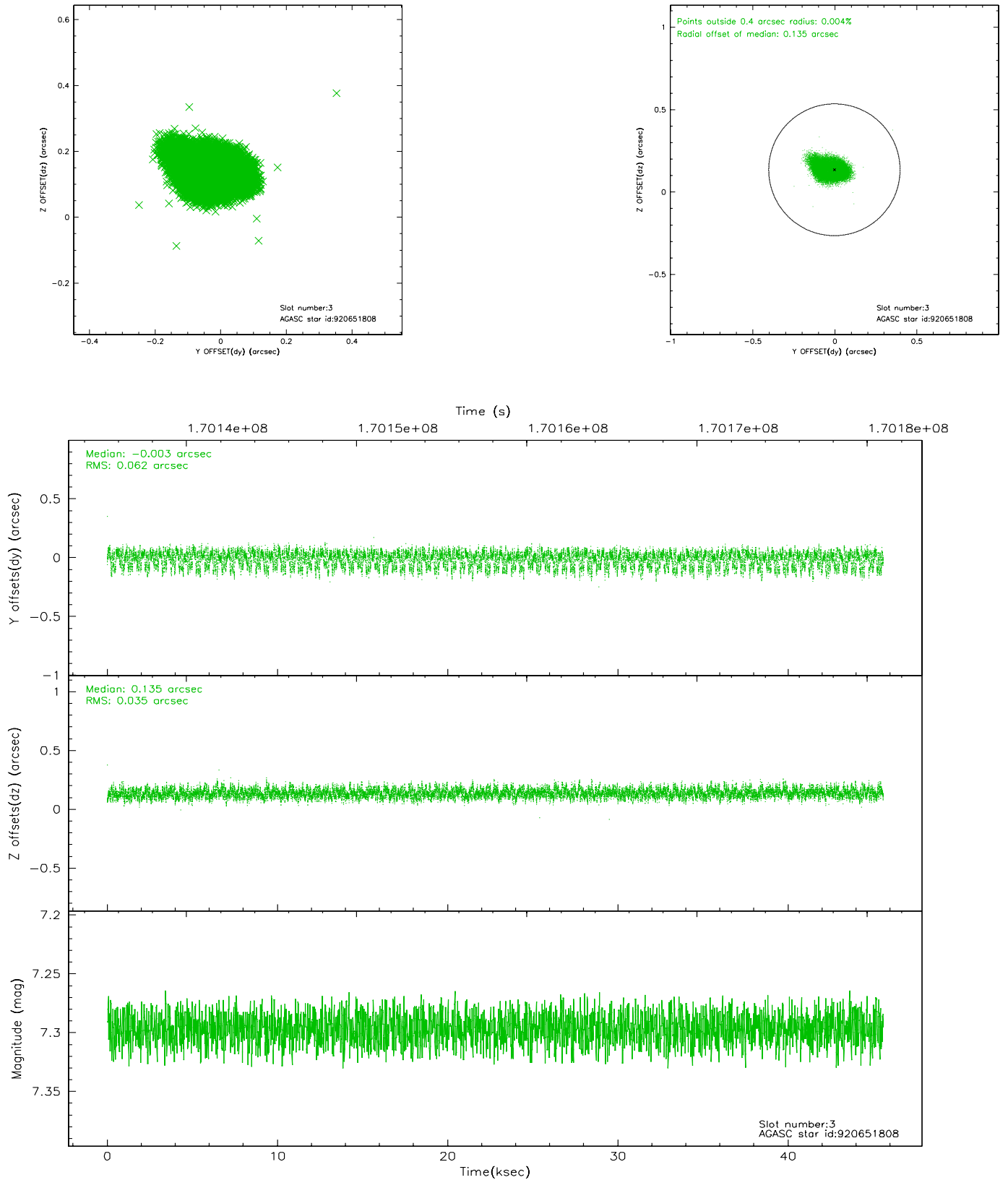


Slot Statistics

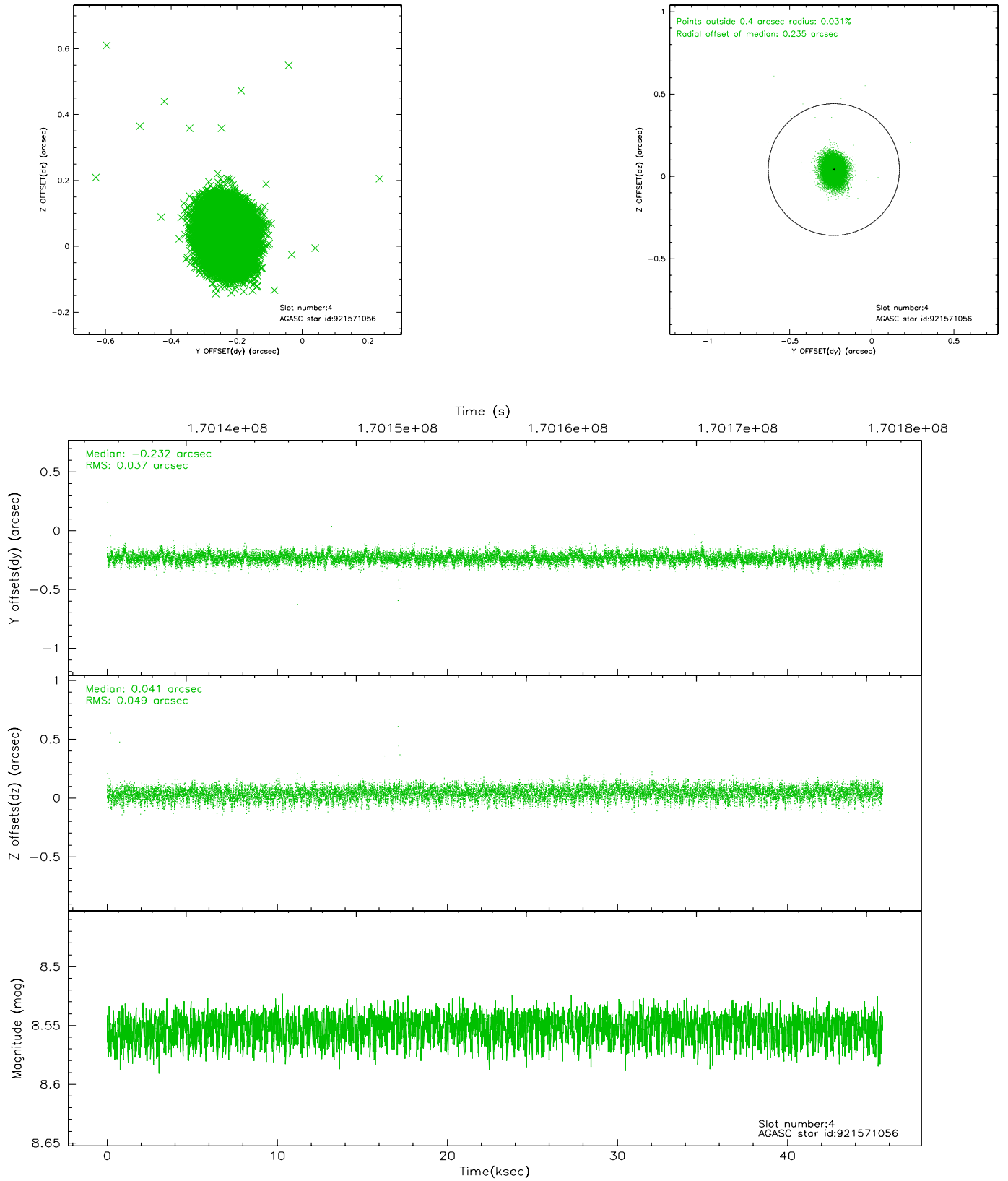
slot	status	id	mag	n_pts	med_dy	med_dz	dr1	dr2	ra	dec	mean_y	mean_z
0	FID	ACIS-I-1	7.24	11121	-0.053	0.090	0.006	0.011	0.000000	0.000000	937.60	-832.27
1	FID	ACIS-I-5	7.23	11122	-0.034	0.014	0.006	0.011	0.000000	0.000000	-1810.50	1065.14
2	FID	ACIS-I-6	7.26	11122	-0.005	-0.033	0.007	0.011	0.000000	0.000000	403.19	1709.59
3	GUIDE	920651808	7.30	22245	-0.003	0.135	0.074	0.128	53.624364	-34.832415	2308.93	-973.76
4	GUIDE	921571056	8.55	22239	-0.232	0.041	0.064	0.107	54.339011	-34.649674	344.51	-1995.73
5	GUIDE	921572720	8.73	22244	0.026	0.052	0.059	0.098	54.127171	-34.789534	874.03	-1390.60
6	GUIDE	921965624	8.65	22233	0.042	-0.144	0.092	0.155	54.900706	-35.940077	-2074.44	2299.72
7	GUIDE	921966544	7.91	22237	0.165	-0.084	0.052	0.088	54.743508	-35.636012	-1437.19	1298.49

2.4 Star Slots

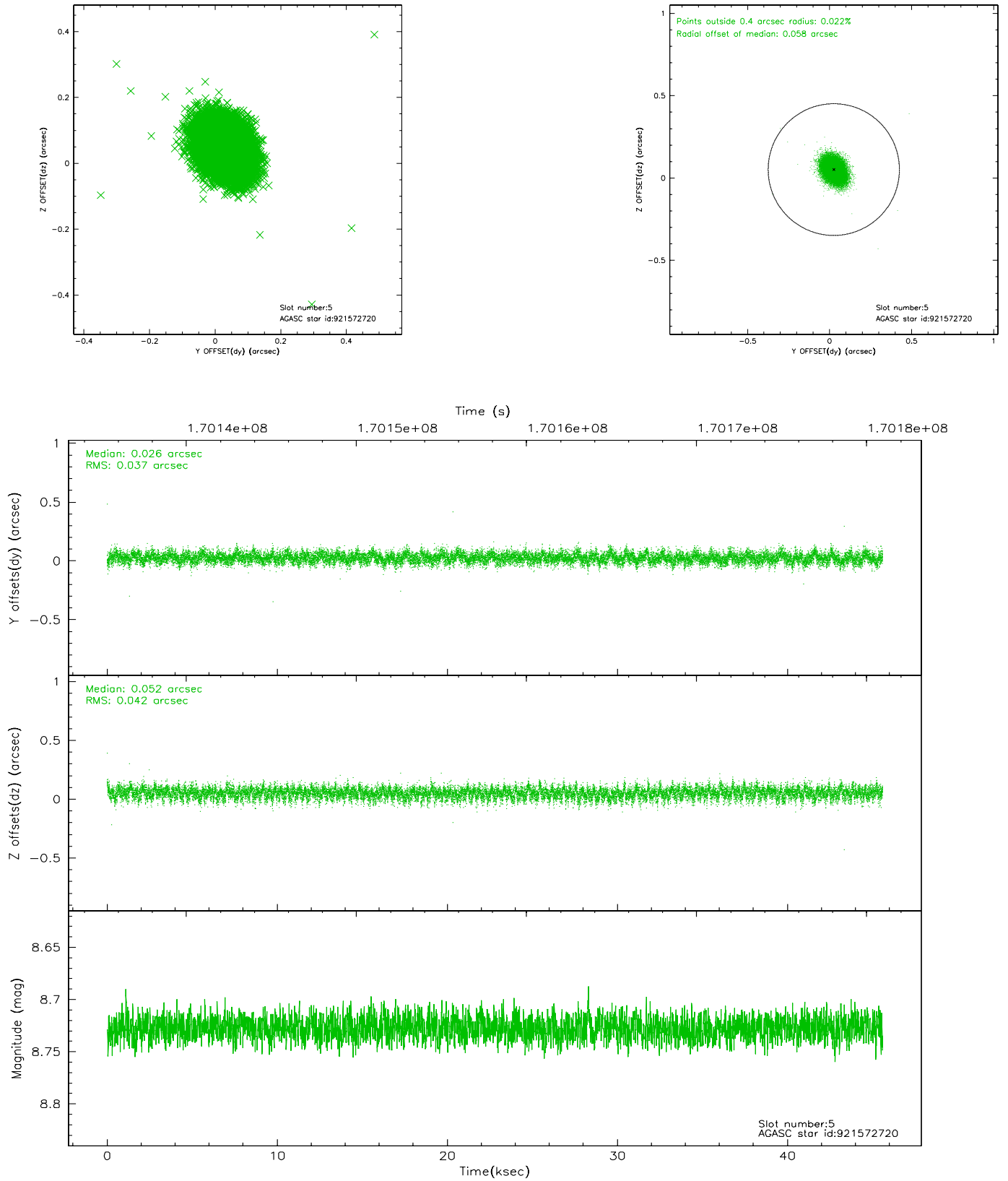
2.4.1 Slot 3



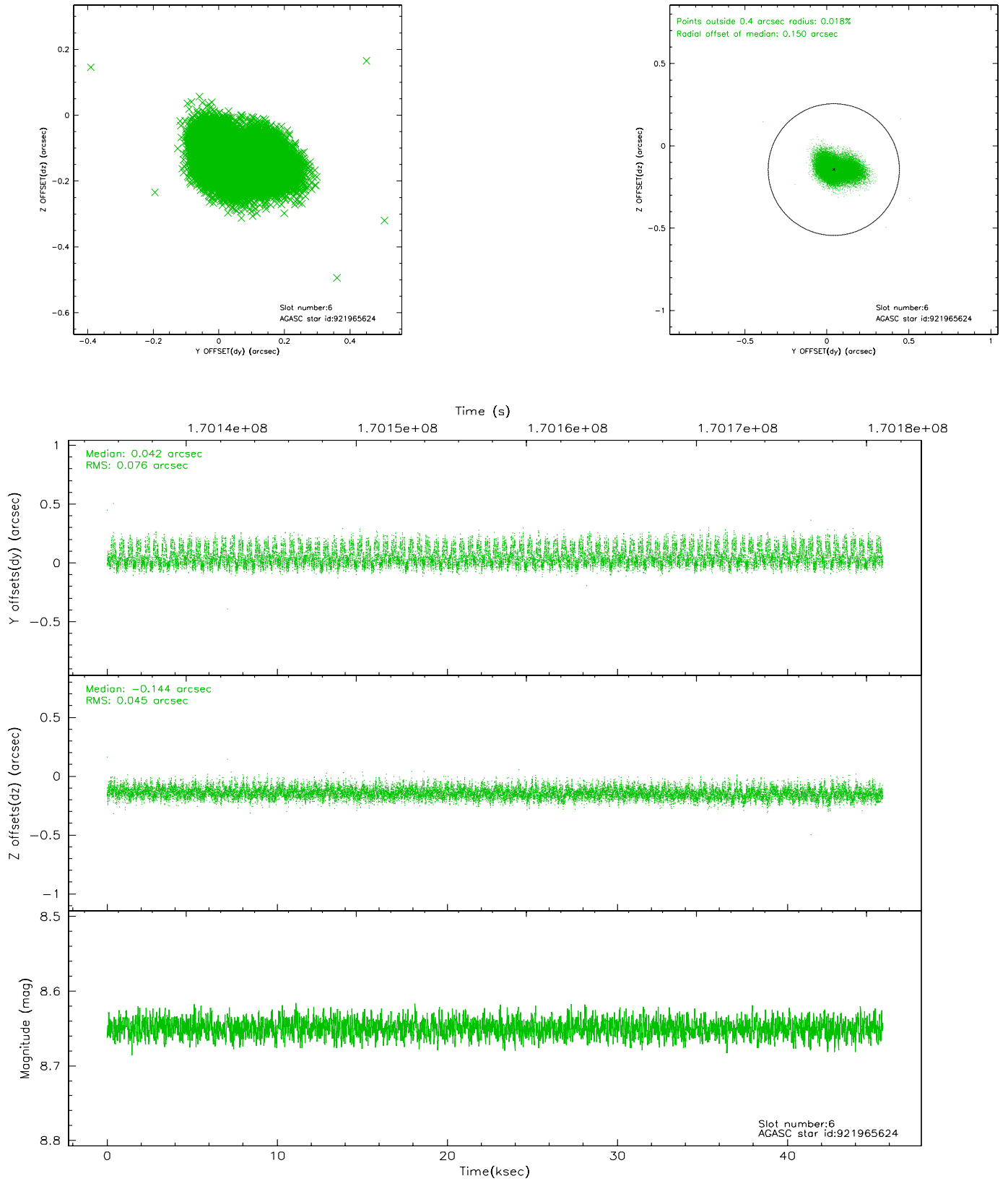
2.4.2 Slot 4



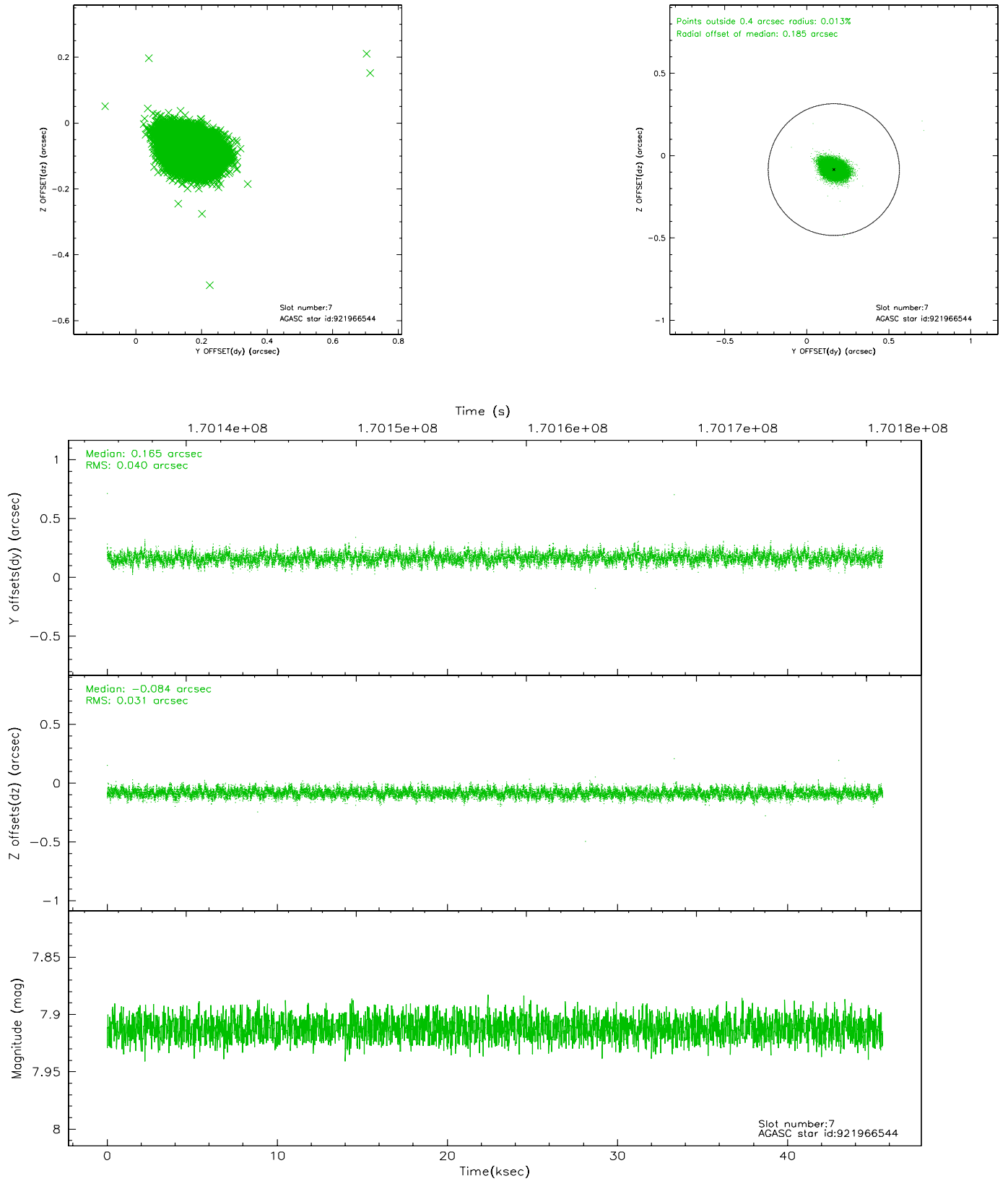
2.4.3 Slot 5



2.4.4 Slot 6

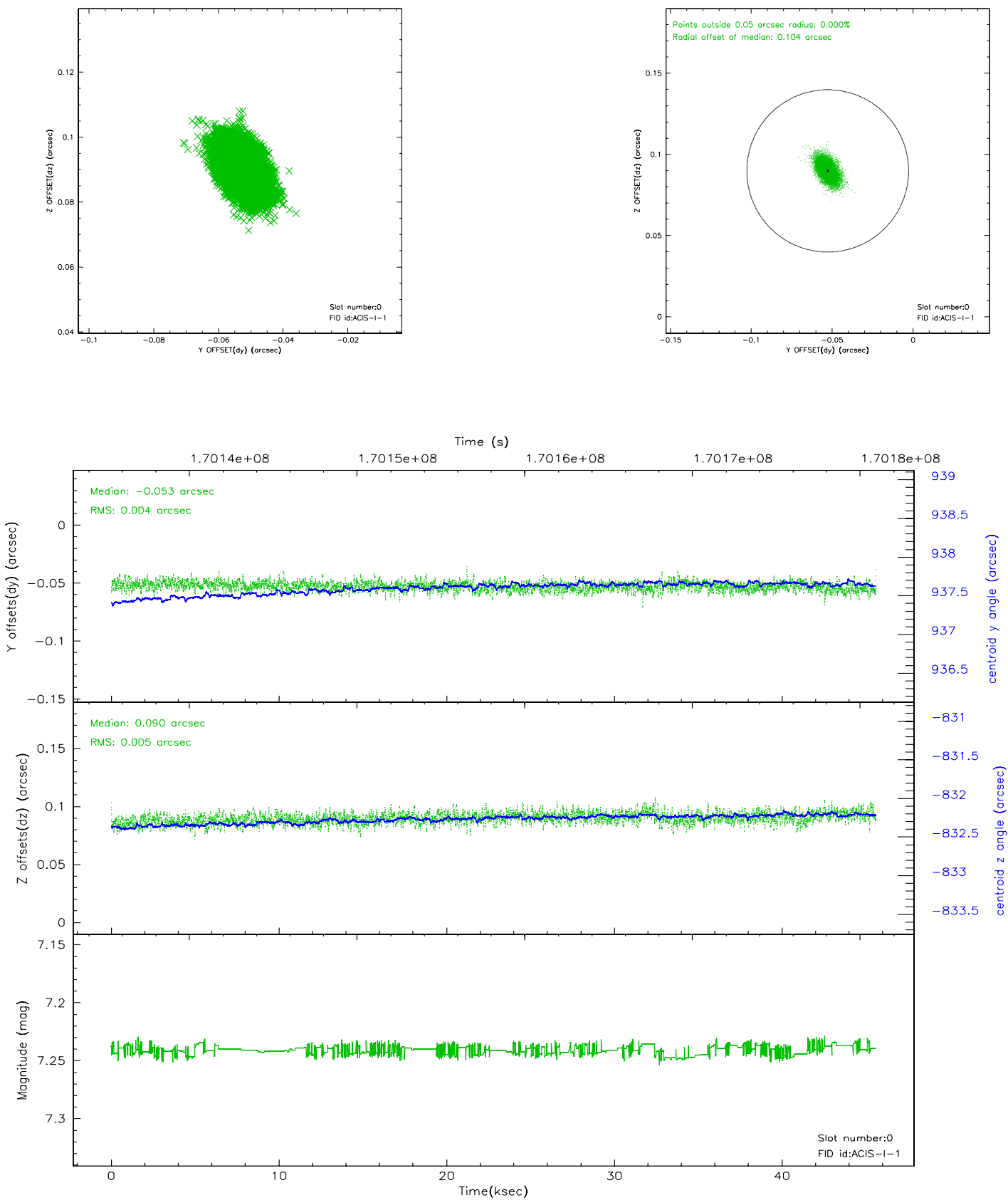


2.4.5 Slot 7

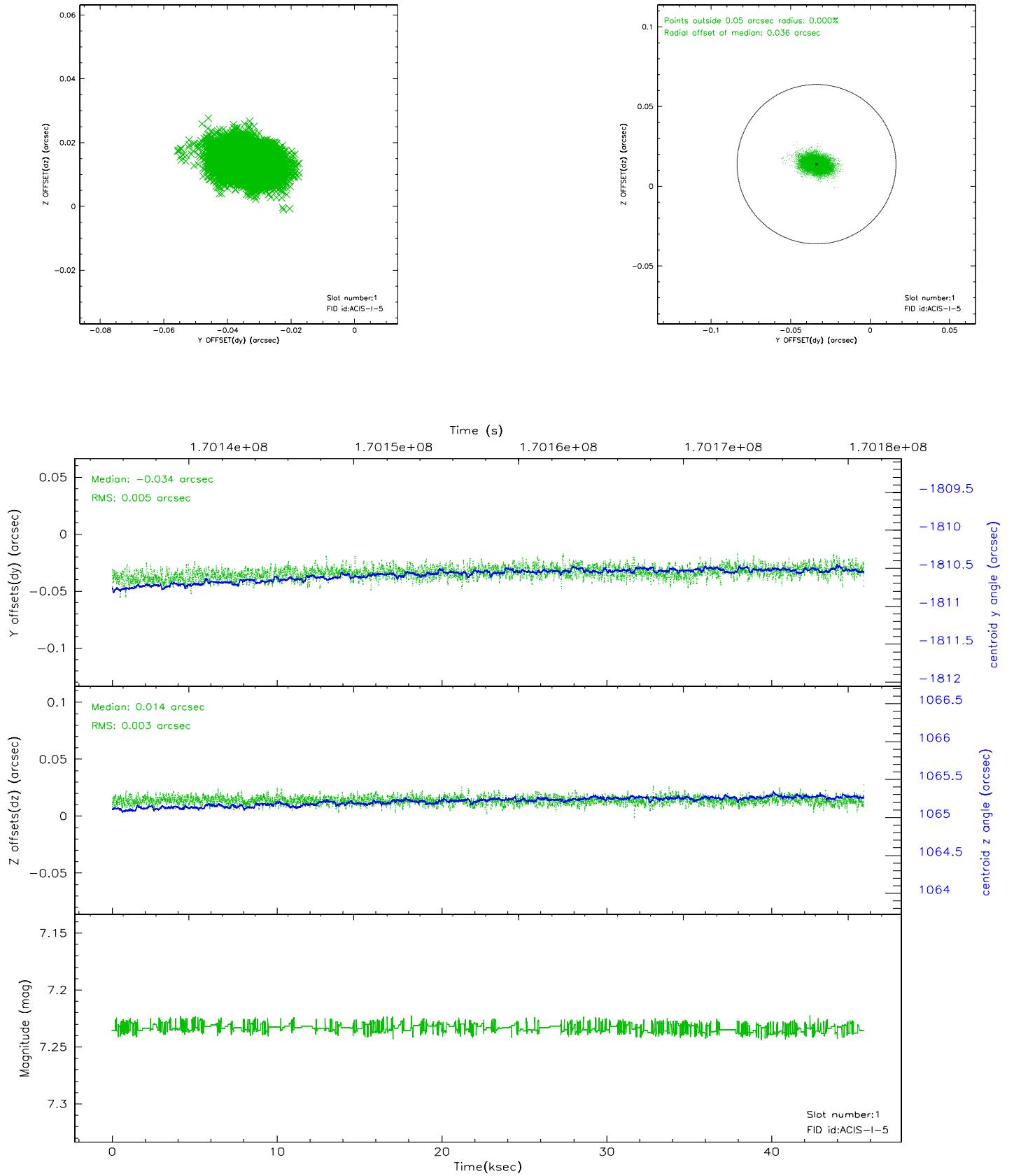


2.5 FID Slots

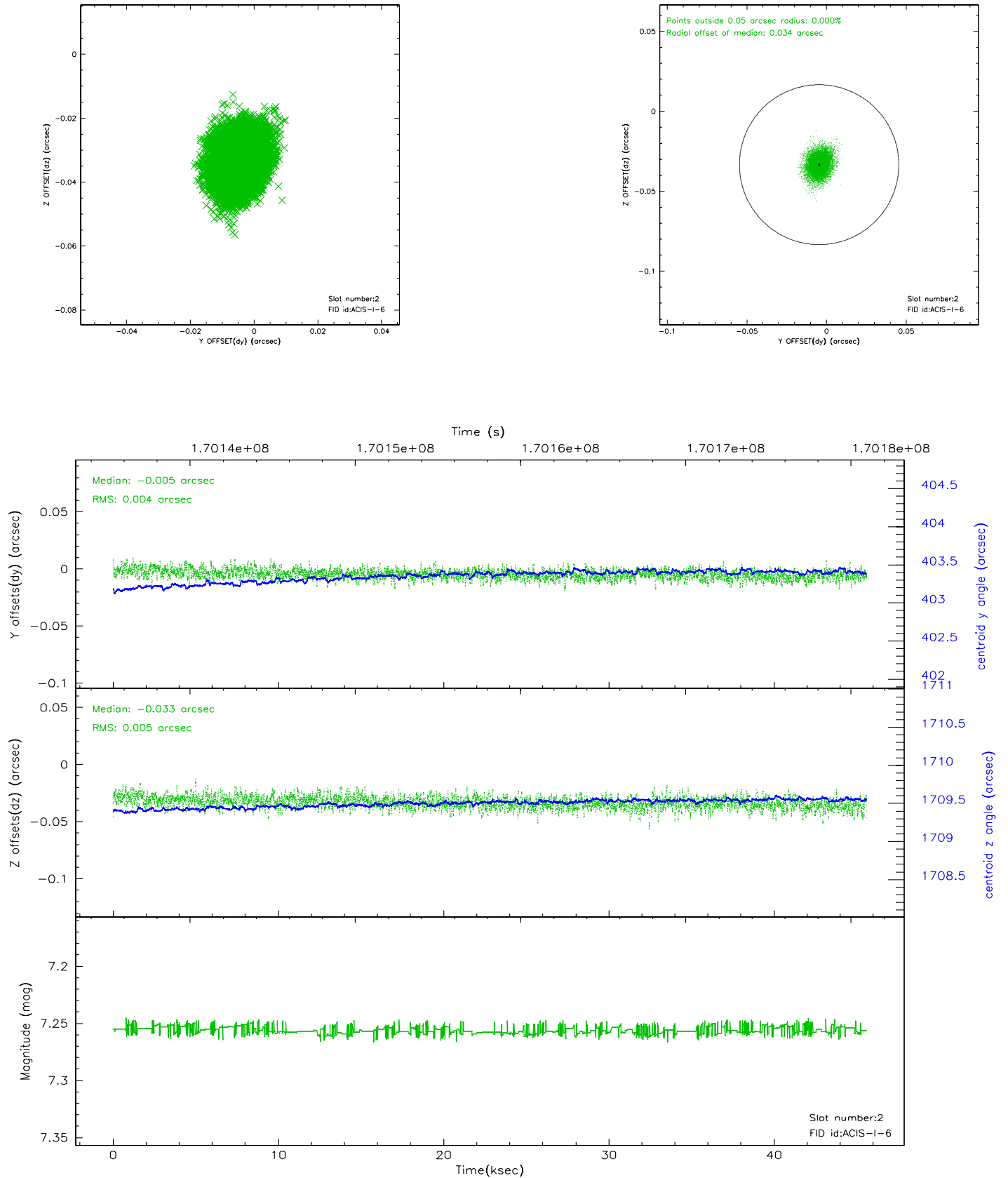
2.5.1 Slot 0



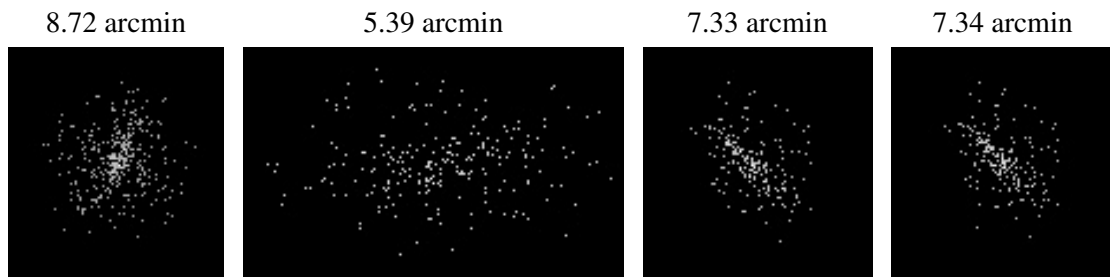
2.5.2 Slot 1



2.5.3 Slot 2



3 Point Sources



A Summary

A.1 Status

V&V Scientist	Beth Sundheim
V&V Date (YYYY-MM-DD)	2006.08.03
V&V Edition	1
V&V Disposition and Status	OK
V&V Charge Time	45.182

A.2 Comments