

V&V Reference Report

L2 ASCDS Version : 7.6.8

Observation 4150 - L2 Version 001
Chandra X-Ray Center

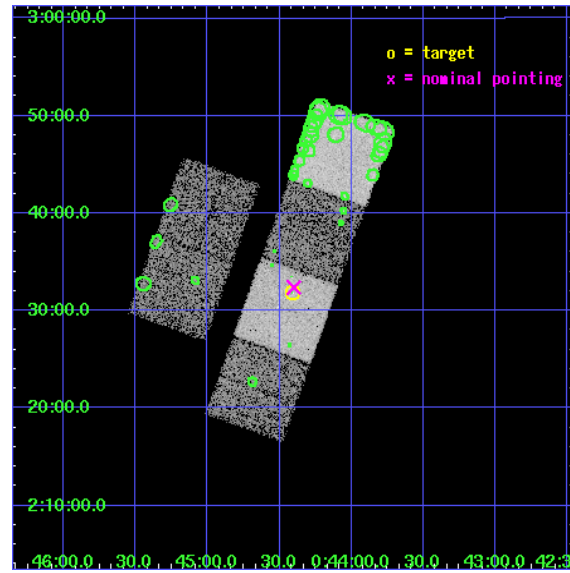
L2 Processing Date : Jul 7 2006

Contents

1	Front	2
2	OBI	3
2.1	OBI	3
2.1.1	Images	3
2.1.2	Bias	3
2.1.3	Parameters	4
2.1.4	Events	4
2.2	Compared Parameters	5
2.3	Aspect	6
2.4	Star Slots	9
2.4.1	Slot 3	9
2.4.2	Slot 4	10
2.4.3	Slot 5	11
2.4.4	Slot 6	12
2.4.5	Slot 7	13
2.5	FID Slots	14
2.5.1	Slot 0	14
2.5.2	Slot 1	15
2.5.3	Slot 2	16
3	Point Sources	17
A	Summary	18
A.1	Status	18
A.2	Comments	18

1 Front

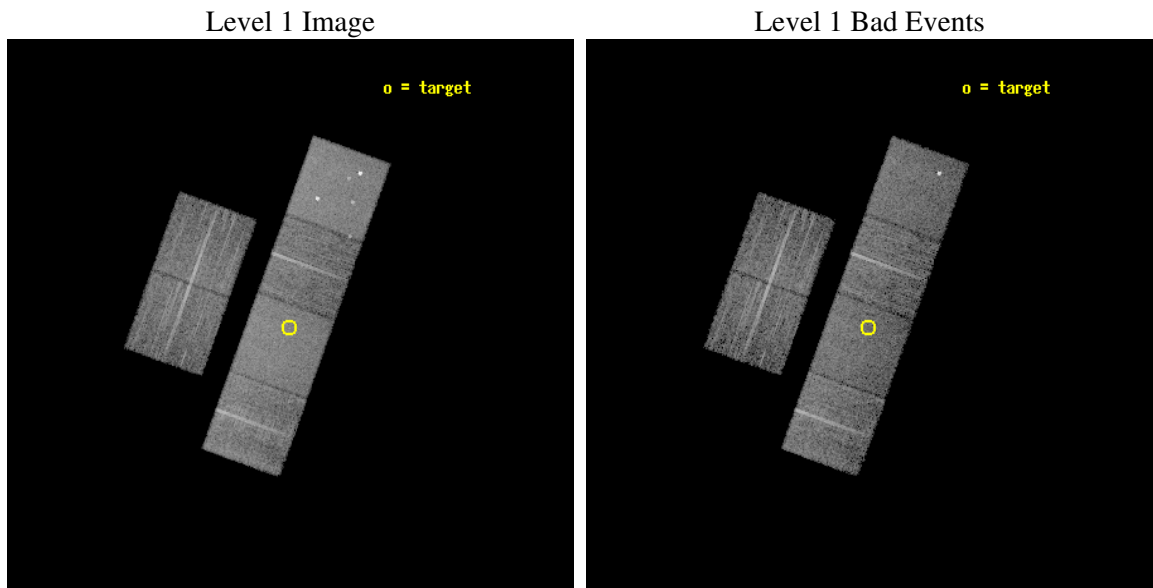
seq_num	700829
obs_id	4150
title	X-RAY TRACE OF THE EARLY RISE OF THE QUASAR POPULATION
observer	Dr. Takamitsu Miyaji
object	PC 0041+0215
dtcycle	0
cycle	P
ra_targ	11.101667
dec_targ	2.530194
ra_nom	11.100017679434
dec_nom	2.5397108332543
roll_nom	109.80644200515
revision	2
ontime	9180.7999657989
livetime	9064.5471486179
ontime2	9180.7999657989
ontime3	9180.7999657989
ontime5	9180.7999657989
ontime6	9180.7999657989
ontime7	9180.7999657989
ontime8	9180.7999657989
l2events	85881



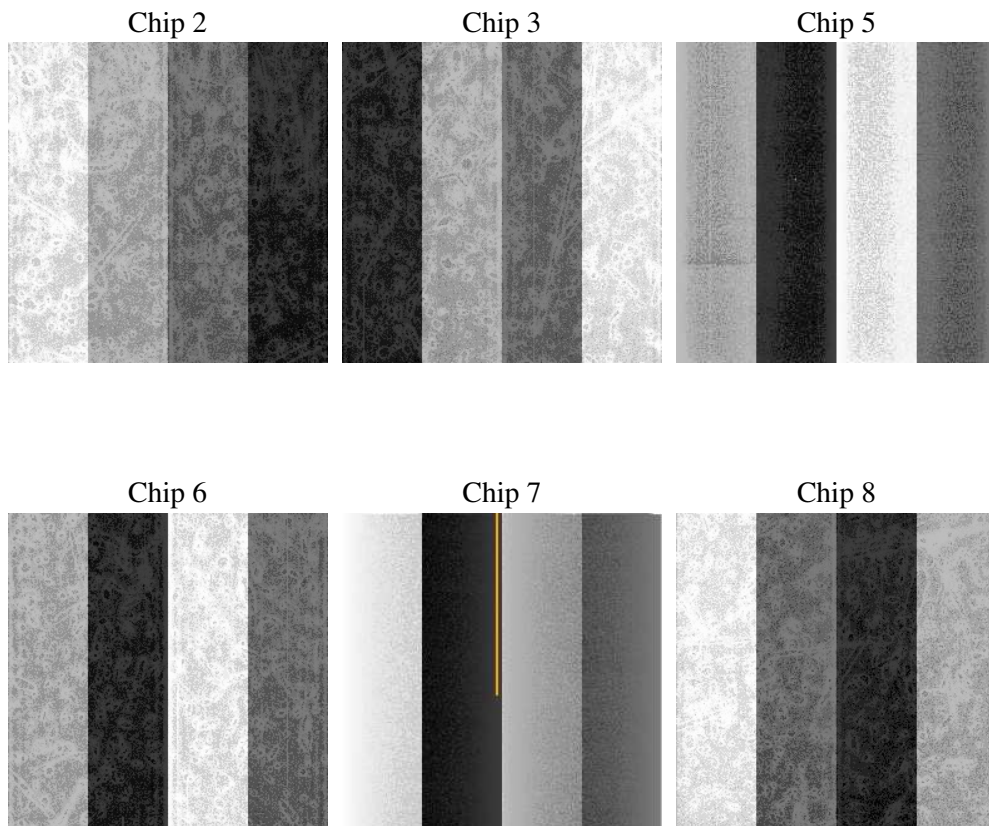
2 OBI

2.1 OBI

2.1.1 Images



2.1.2 Bias



2.1.3 Parameters

obi_num	0
ascdsver	7.6.8
caldsver	3.2.2
date	2006-07-07T23:06:37
revision	2

sched_exp_time	9000.000000
ontime	9301.6894983649
ontime2	9301.689478457
ontime3	9301.689478457
ontime5	9301.689478457
ontime6	9301.689478457
ontime7	9301.6894983649
ontime8	9301.689478457
l1events	411703

2.1.4 Events

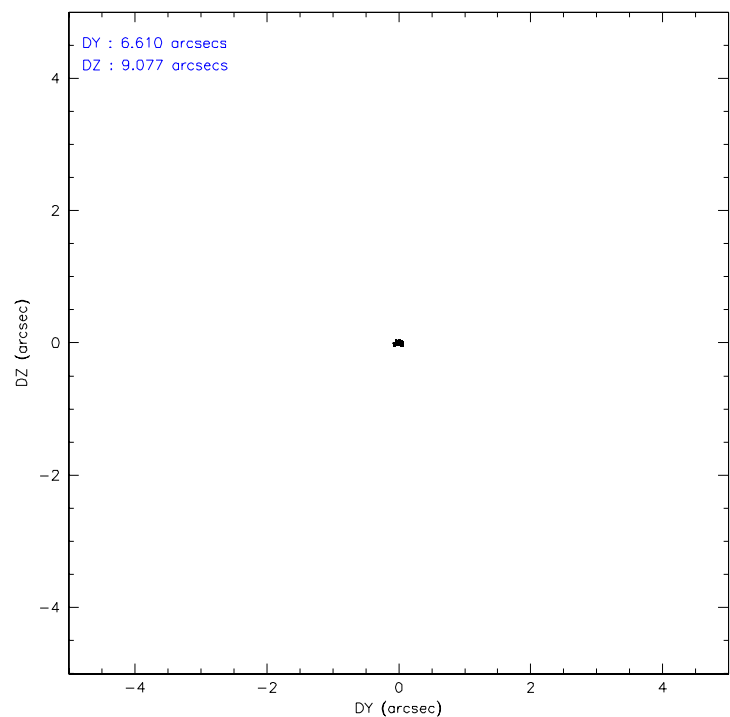
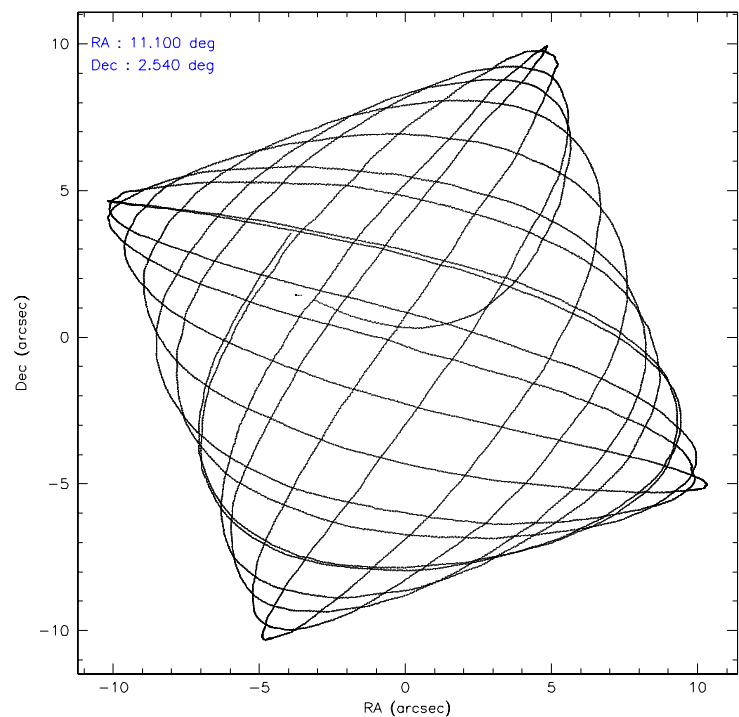
	ccd 2	ccd 3	ccd 5	ccd 6	ccd 7	ccd 8
level 1 events	58820	56068	88360	58941	77421	72093
rejected events	52320	49600	49410	52271	48741	57699
rejected %	88%	88%	55%	88%	62%	80%

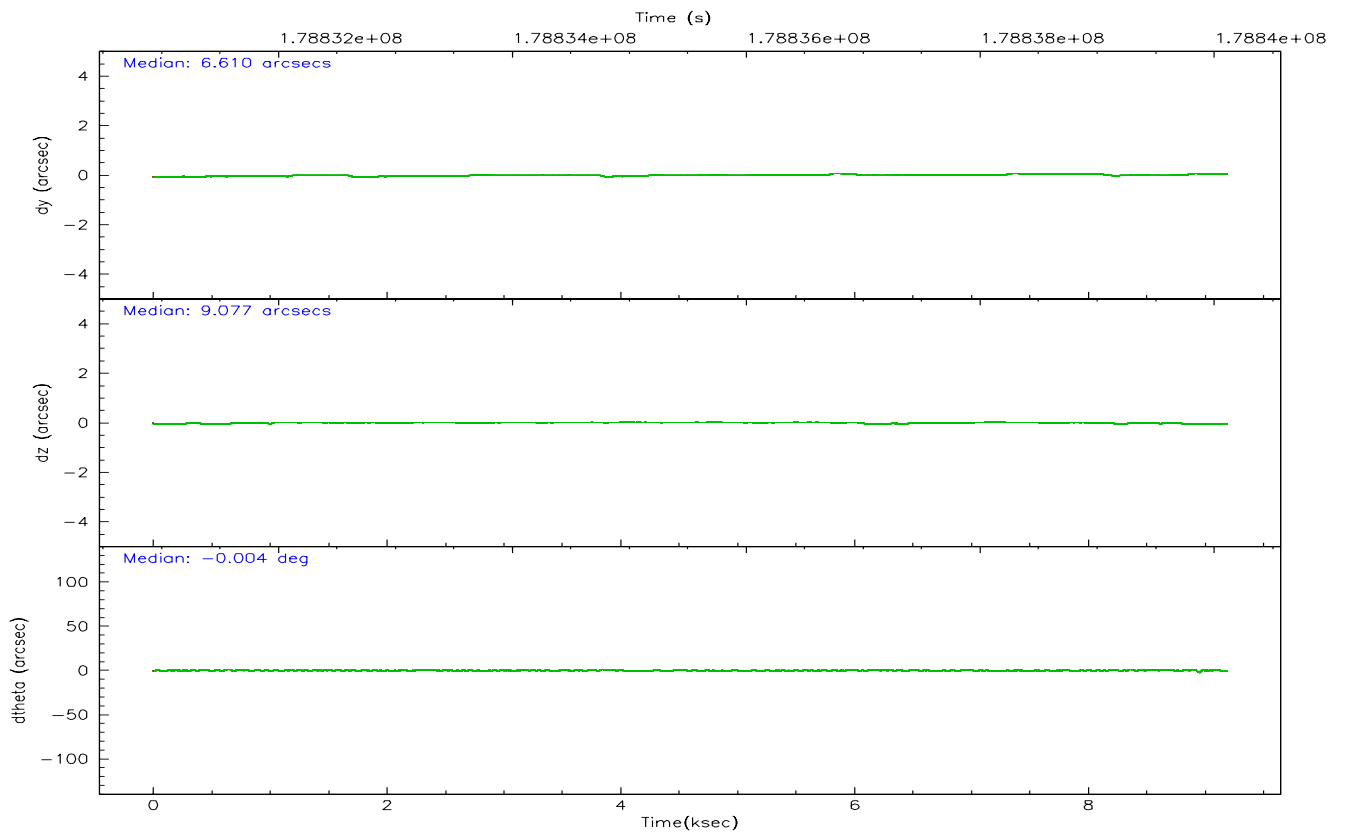
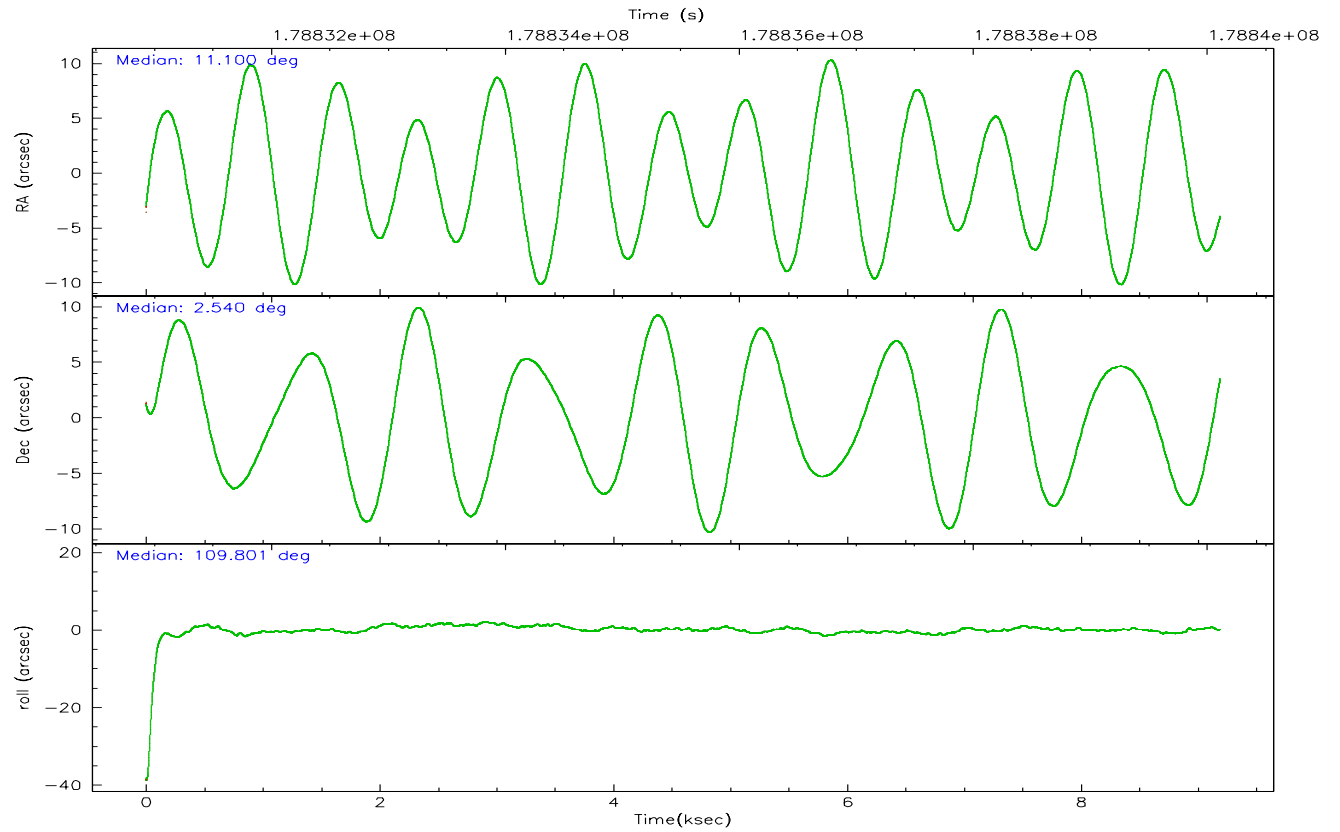
	ccd 2	ccd 3	ccd 5	ccd 6	ccd 7	ccd 8
grade 0 events	2845	2826	4497	2745	1644	4606
	4%	5%	5%	4%	2%	6%
grade 1 events	49	34	85	41	37	50
	0%	0%	0%	0%	0%	0%
grade 2 events	1357	1254	12189	1344	7227	3190
	2%	2%	13%	2%	9%	4%
grade 3 events	662	674	807	637	1453	1600
	1%	1%	0%	1%	1%	2%
grade 4 events	594	661	749	649	1402	1530
	1%	1%	0%	1%	1%	2%
grade 5 events	2297	2408	4249	2627	5129	3423
	3%	4%	4%	4%	6%	4%
grade 6 events	1124	1129	21222	1390	17377	3767
	1%	2%	24%	2%	22%	5%
grade 7 events	49892	47082	44562	49508	43152	53927
	84%	83%	50%	83%	55%	74%

2.2 Compared Parameters

Parameter	Planned	Actual	Parameter	Planned	Actual
Instrument	ACIS	ACIS	Obspar format version number	6	6
Detector	ACIS-235678	ACIS-235678	Obspar file type	PREDICTED	ACTUAL
Grating	NONE	NONE	Obspar update status	NONE	UPDATED
Data mode	VFAINT	VFAINT	On-chip summing requested	N	N
Observation mode	POINTING	POINTING	Subarray requested	NONE	NONE
Pointing RA	11.121092	11.10001767943426	Alternating exposures requested	N	N
Pointing Dec	2.522439	2.539710833254293	Primary exposure time	0.000000	3.2
Pointing Roll	109.648930	109.8064420051492			
SIM focus pos (mm)	-0.684267	-0.6828225247311905			
SIM defocus (mm)	0	0.001444936568705701			
SIM translation stage pos (mm)	-190.132523	-190.1400660498719			
SIM translation stage offset (mm)	0	0.00754346686406393			
Observation start time	178831116.184000	178829986.00842			
Observation start date	2003-09-01T19:17:32	2003-09-01T18:59:46			
Observation end time	178840116.184000	178840302.63386			
Observation end date	2003-09-01T21:47:32	2003-09-01T21:51:42			
Read mode	TIMED	TIMED			

2.3 Aspect



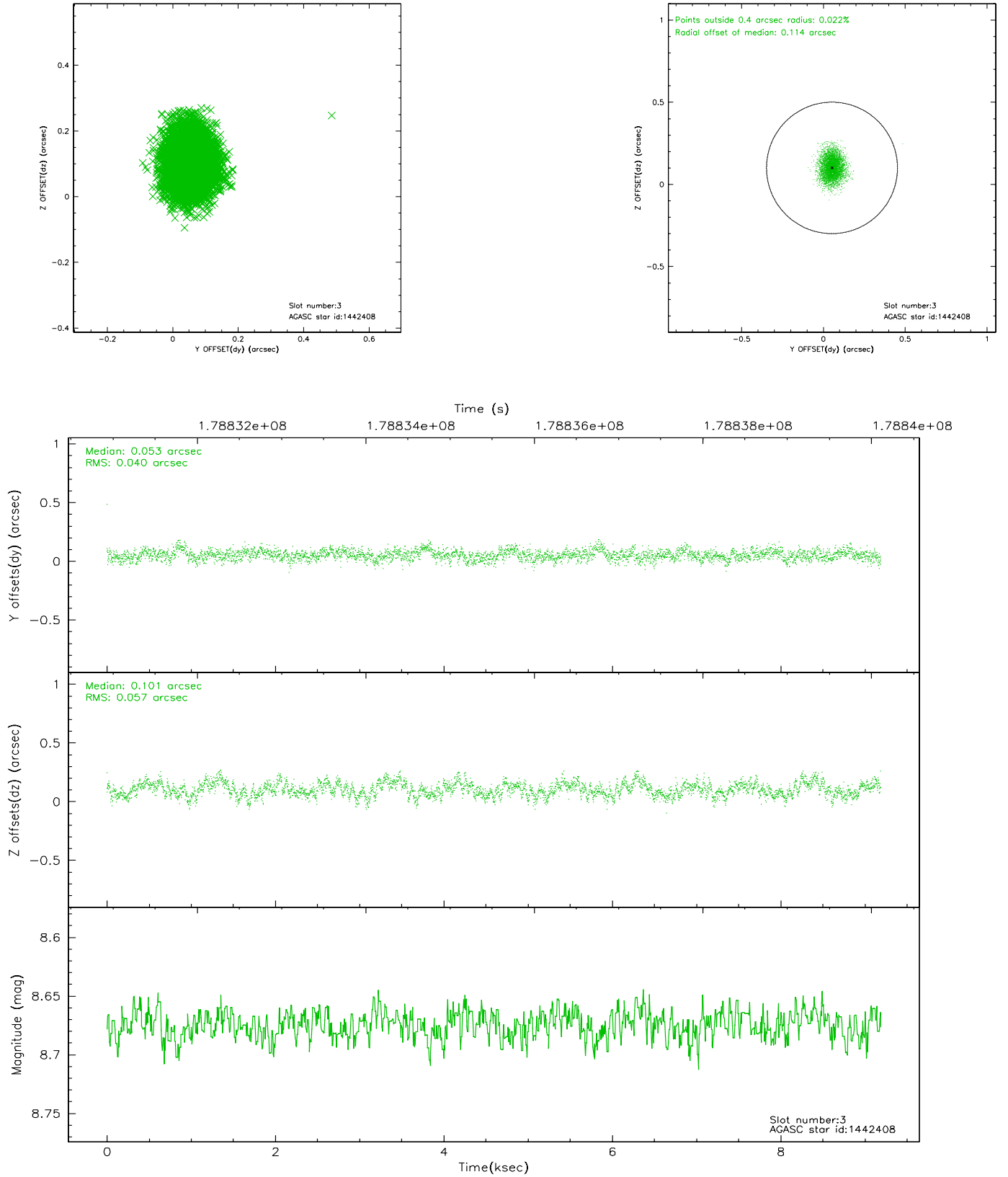


Slot Statistics

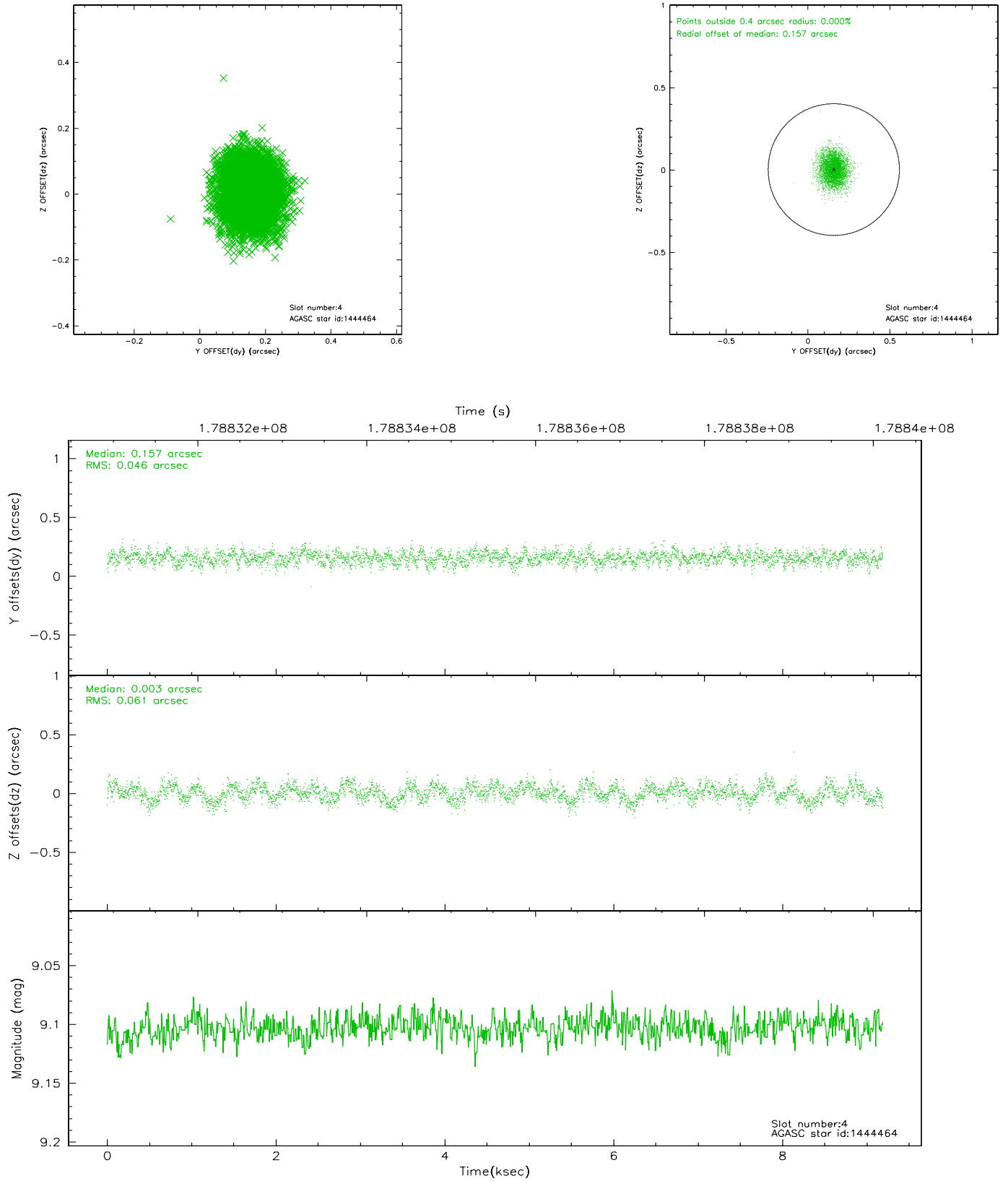
slot	status	id	mag	n_pts	med_dy	med_dz	dr1	dr2	ra	dec	mean_y	mean_z
0	FID	ACIS-S-2	7.09	2242	-0.030	-0.011	0.007	0.010	0.000000	0.000000	-759.37	-1730.31
1	FID	ACIS-S-4	7.20	2242	0.022	0.018	0.005	0.009	0.000000	0.000000	2153.68	177.60
2	FID	ACIS-S-5	7.22	2242	-0.023	0.003	0.006	0.011	0.000000	0.000000	-1811.45	171.92
3	GUIDE	1442408	8.67	4481	0.053	0.101	0.075	0.120	11.437221	2.487670	-499.80	-1028.73
4	GUIDE	1444464	9.10	4481	0.157	0.003	0.082	0.131	10.870121	2.307838	-423.83	1109.68
5	GUIDE	1451664	8.23	4484	0.096	-0.119	0.066	0.106	10.822745	2.053627	-1228.41	1578.37
6	GUIDE	1835312	8.61	4483	-0.094	0.088	0.064	0.100	11.138504	2.604519	257.05	-157.87
7	GUIDE	1836648	8.69	4482	-0.211	-0.075	0.067	0.107	10.519756	2.934463	2124.25	1537.36

2.4 Star Slots

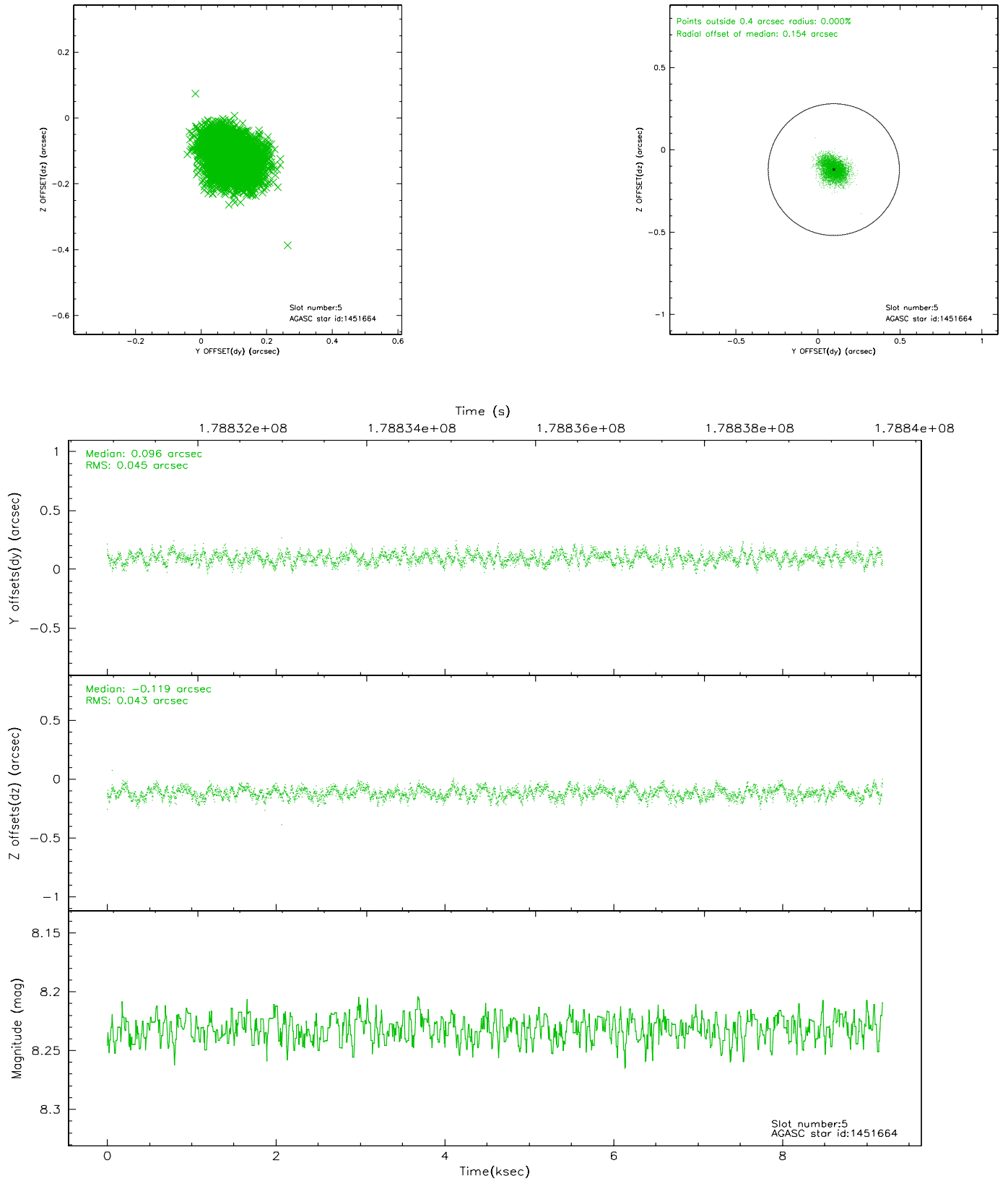
2.4.1 Slot 3



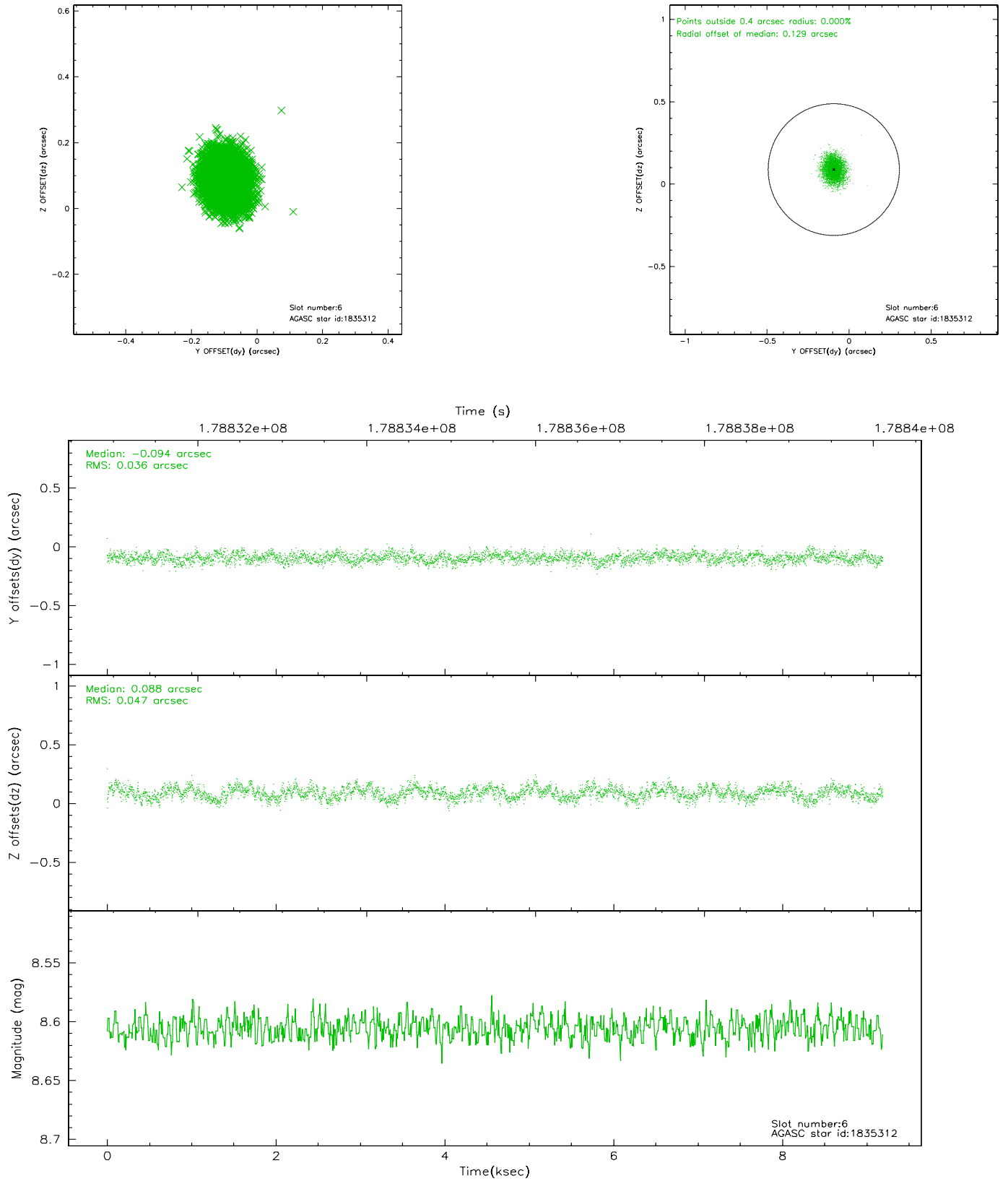
2.4.2 Slot 4



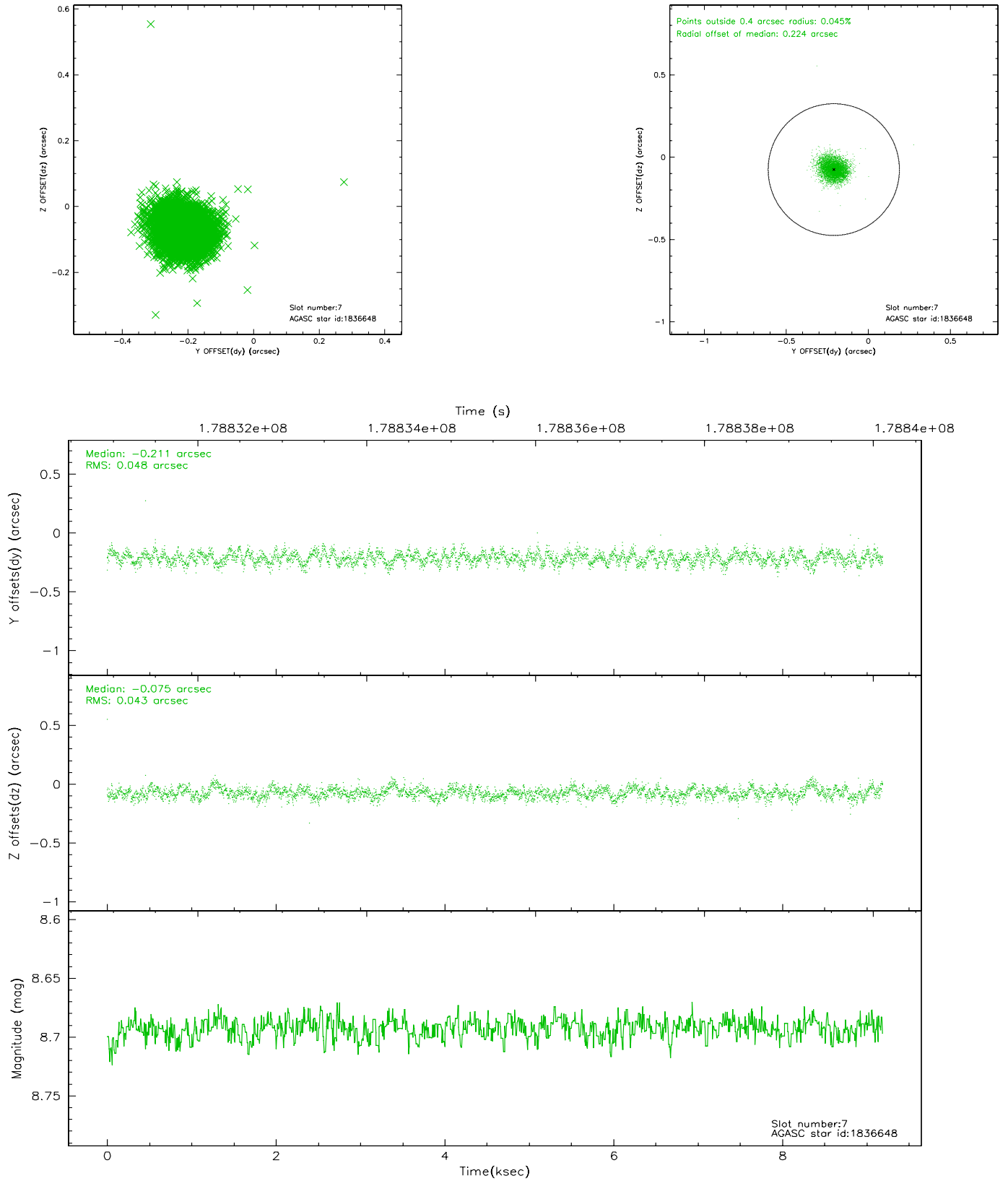
2.4.3 Slot 5



2.4.4 Slot 6

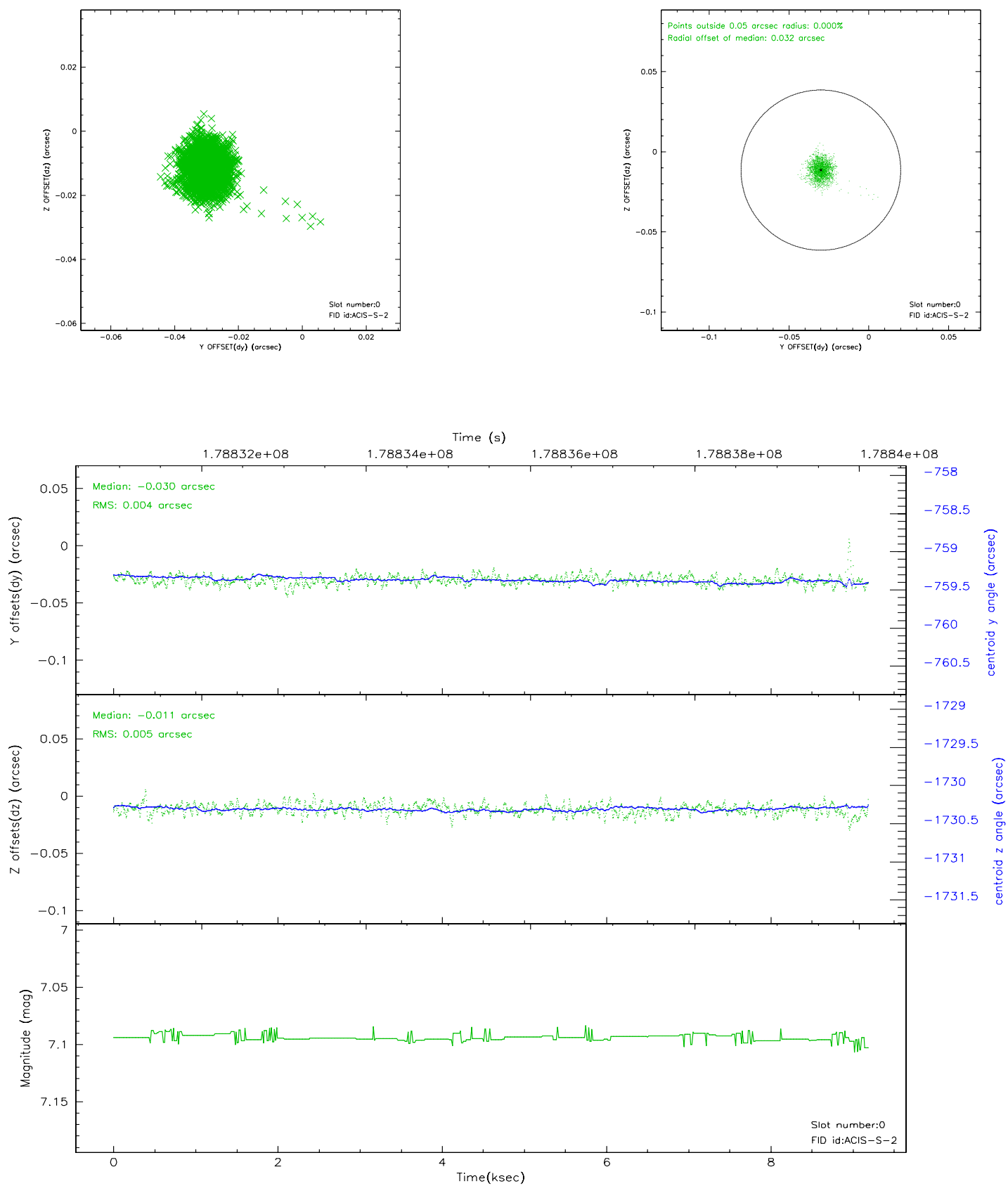


2.4.5 Slot 7

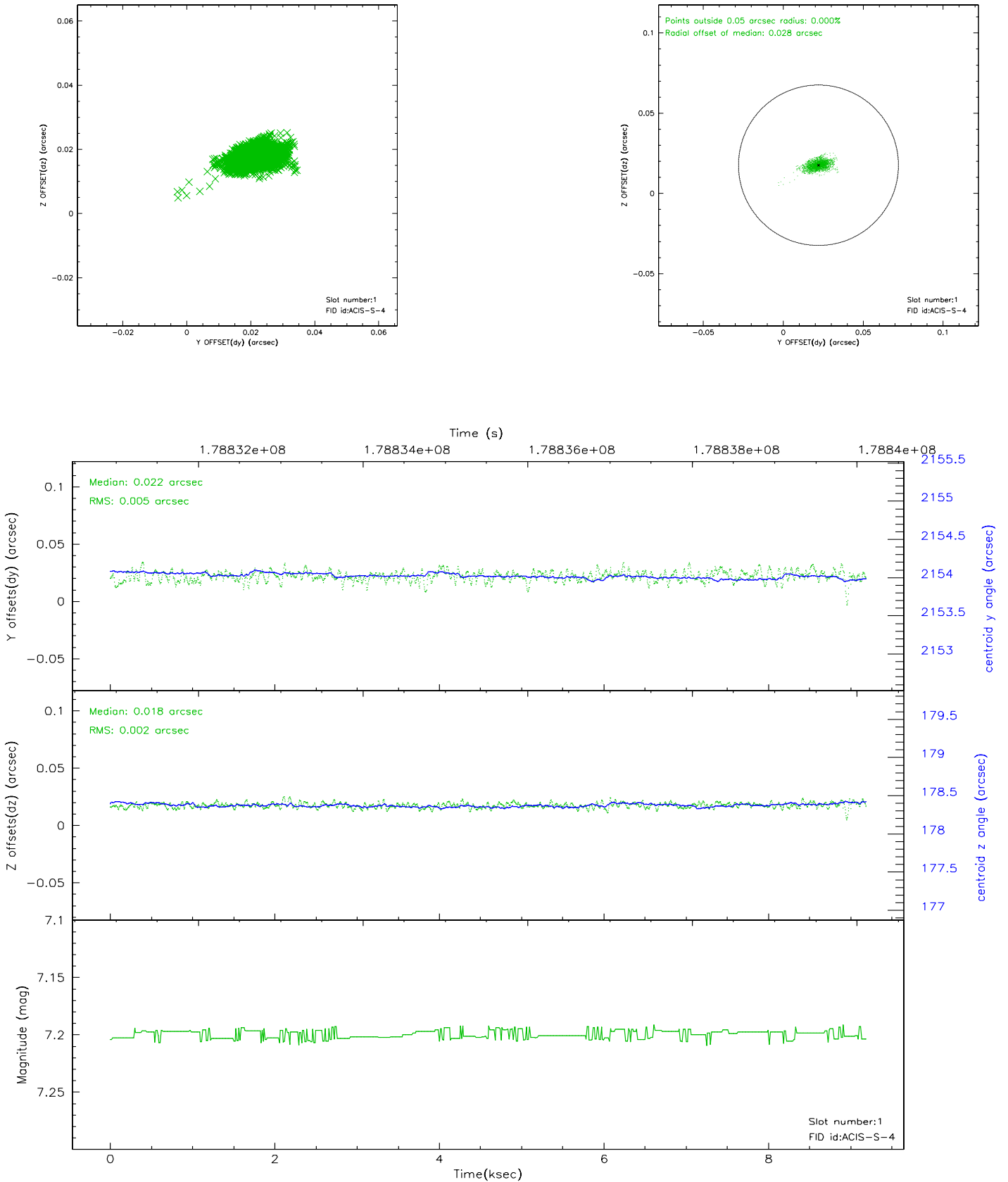


2.5 FID Slots

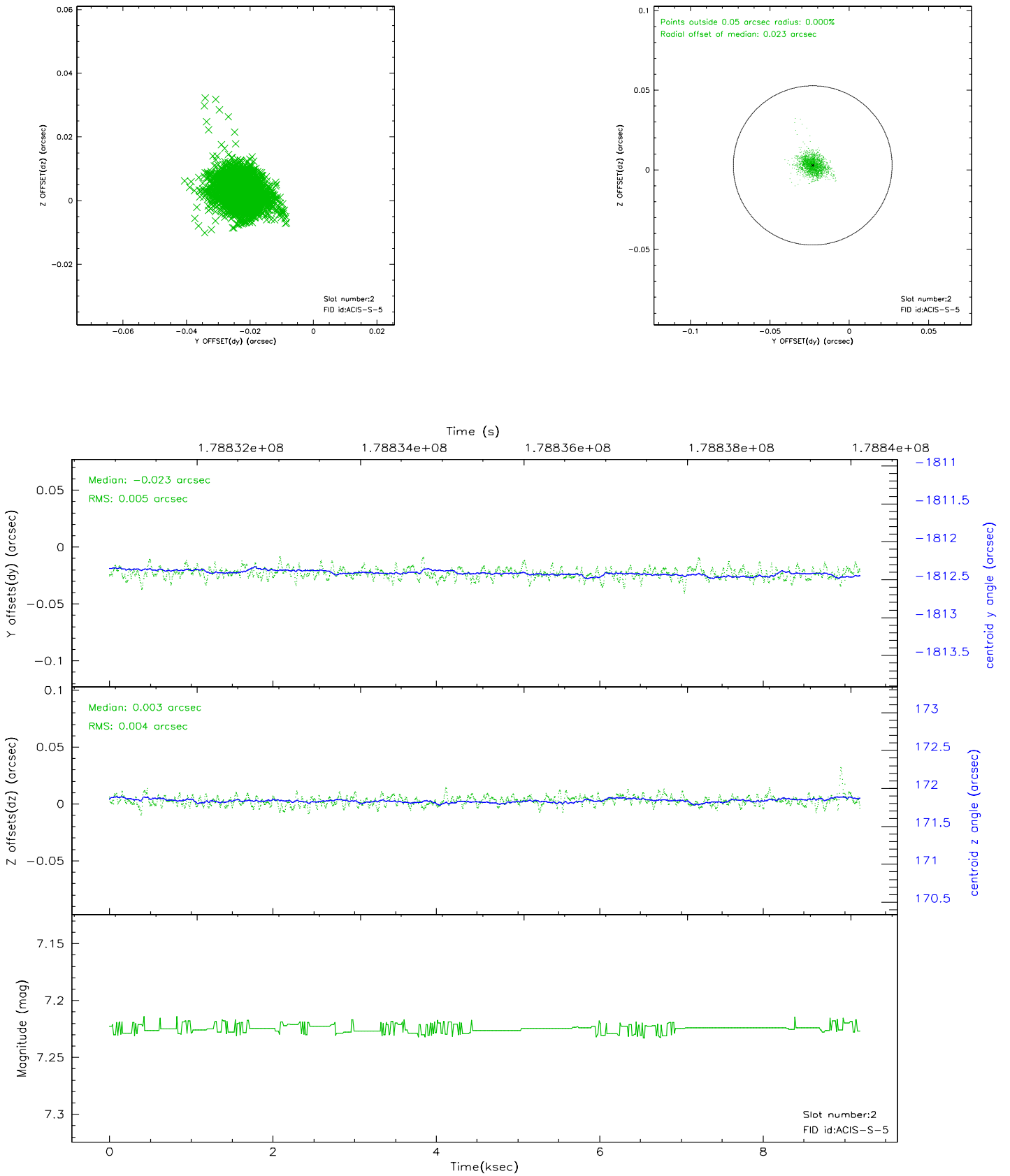
2.5.1 Slot 0



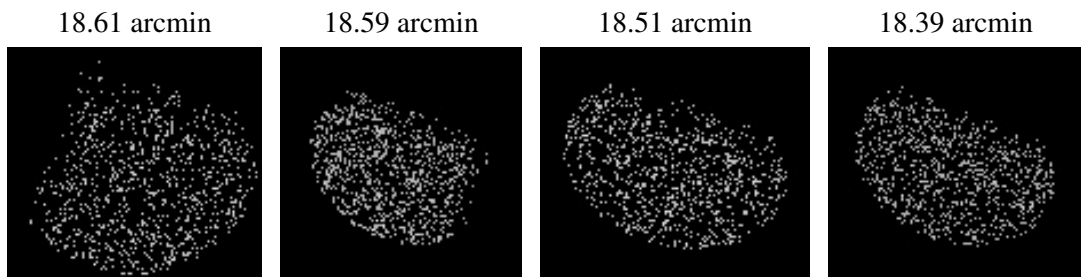
2.5.2 Slot 1



2.5.3 Slot 2



3 Point Sources



A Summary

A.1 Status

V&V Scientist	Jen Lauer
V&V Date (YYYY-MM-DD)	2006.07.10
V&V Edition	1
V&V Disposition and Status	OK
V&V Charge Time	9.18

A.2 Comments