

V&V Reference Report

L2 ASCDS Version : 7.6.9

Observation 4090 - L2 Version 001
Chandra X-Ray Center

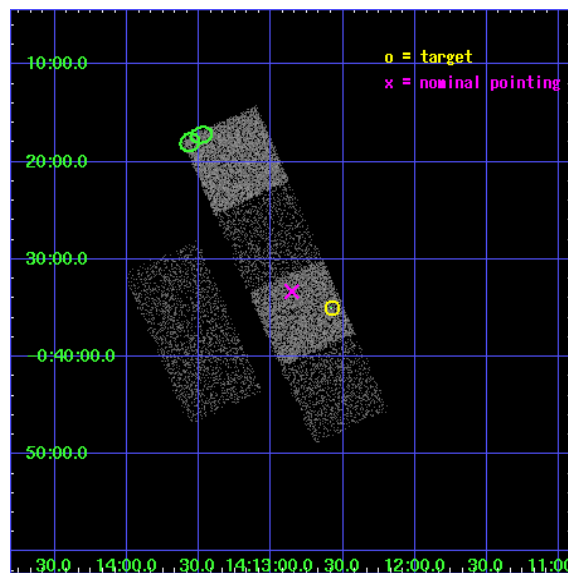
L2 Processing Date : Oct 18 2006

Contents

1	Front	2
2	OBI	3
2.1	OBI	3
2.1.1	Images	3
2.1.2	Bias	3
2.1.3	Parameters	4
2.1.4	Events	4
2.2	Compared Parameters	5
2.3	Aspect	6
2.4	Star Slots	9
2.4.1	Slot 3	9
2.4.2	Slot 4	10
2.4.3	Slot 5	11
2.4.4	Slot 6	12
2.4.5	Slot 7	13
2.5	FID Slots	14
2.5.1	Slot 0	14
2.5.2	Slot 1	15
2.5.3	Slot 2	16
3	Point Sources	17
A	Summary	18
A.1	Status	18
A.2	Comments	18

1 Front

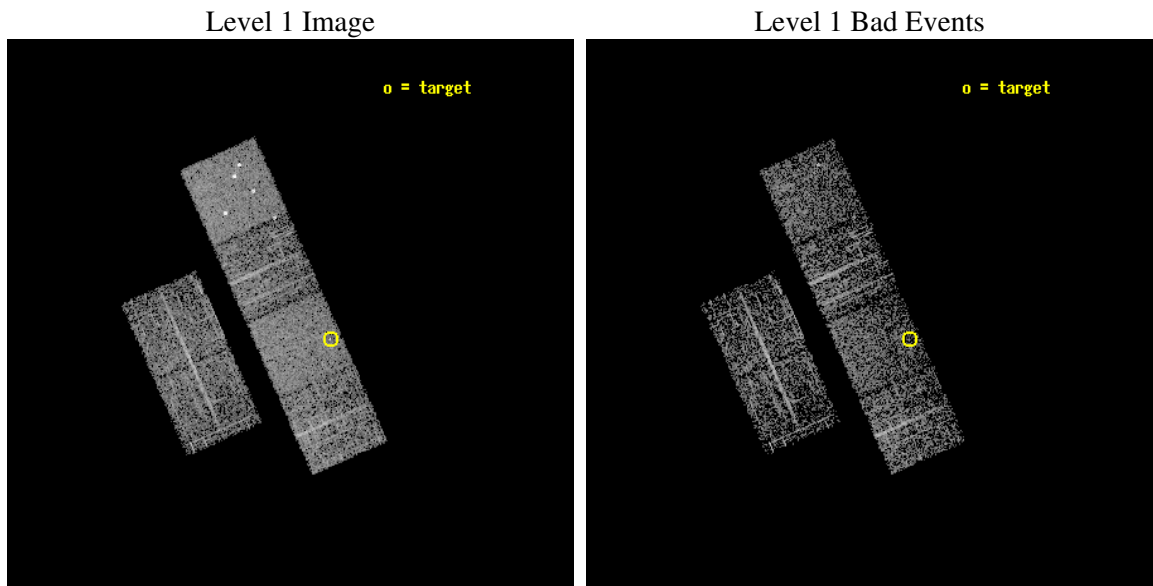
seq_num	700769
obs_id	4090
title	ARE ALL NARROW-LINE SEYFERT 1S ULTRASOFT X-RAY SOURCES?
observer	Prof RICHARD POGGE
object	SDSS J141234.68-003500.0
dtcycle	0
cycle	P
ra_targ	213.144583
dec_targ	-0.583333
ra_nom	213.21373291366
dec_nom	-0.55514265253882
roll_nom	66.148442773544
revision	2
ontime	2121.5999920964
livetime	2094.7350155224
ontime2	2121.5999920964
ontime3	2121.5999920964
ontime5	2121.5999920964
ontime6	2121.5999920964
ontime7	2121.5999920964
ontime8	2121.5999920964
l2events	20130



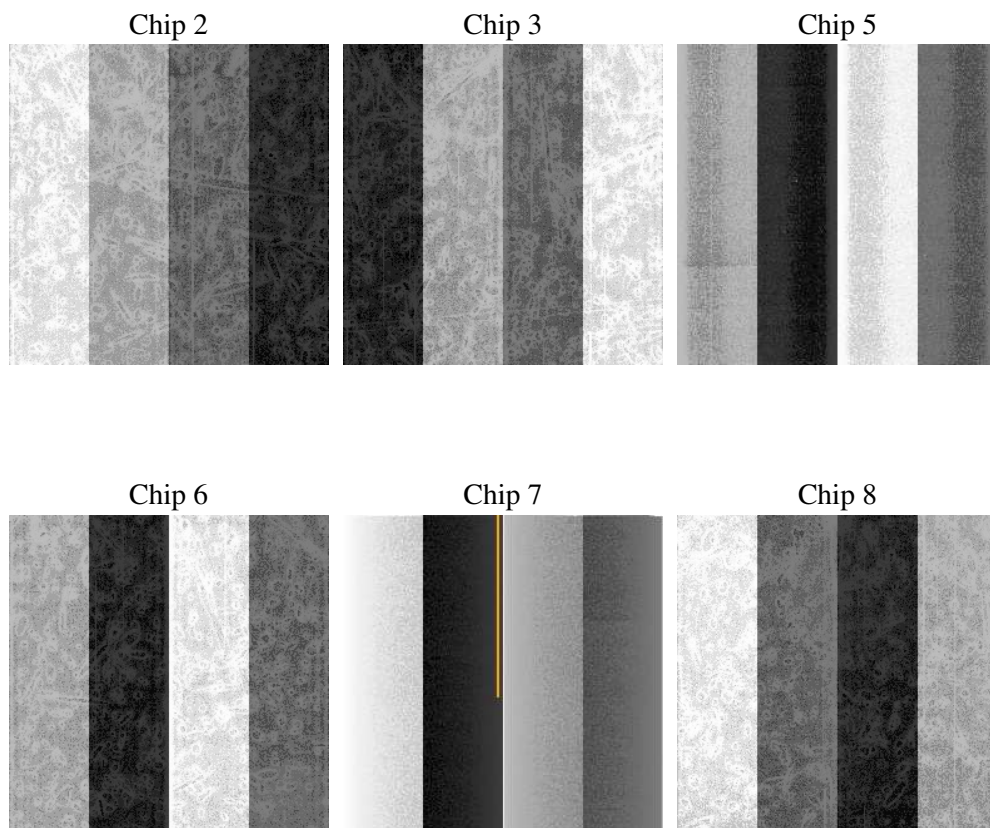
2 OBI

2.1 OBI

2.1.1 Images



2.1.2 Bias



2.1.3 Parameters

obi_num	1
ascdsver	7.6.9
caldsver	3.2.3
date	2006-10-18T16:48:22
revision	2

sched_exp_time	2000.000000
ontime	2246.0174940825
ontime2	2246.0174940825
ontime3	2246.0174940825
ontime5	2246.0174940825
ontime6	2246.0174940825
ontime7	2246.0174940825
ontime8	2246.0174940825
l1events	101240

2.1.4 Events

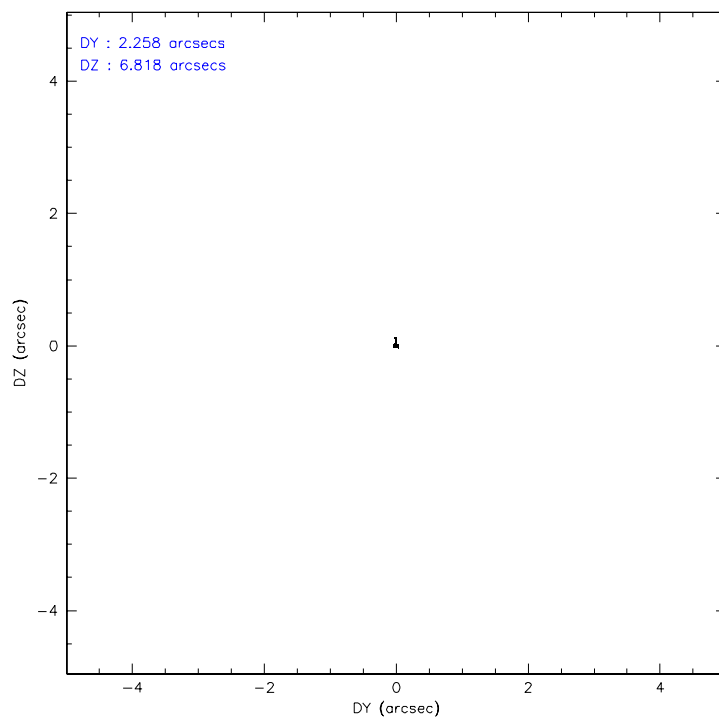
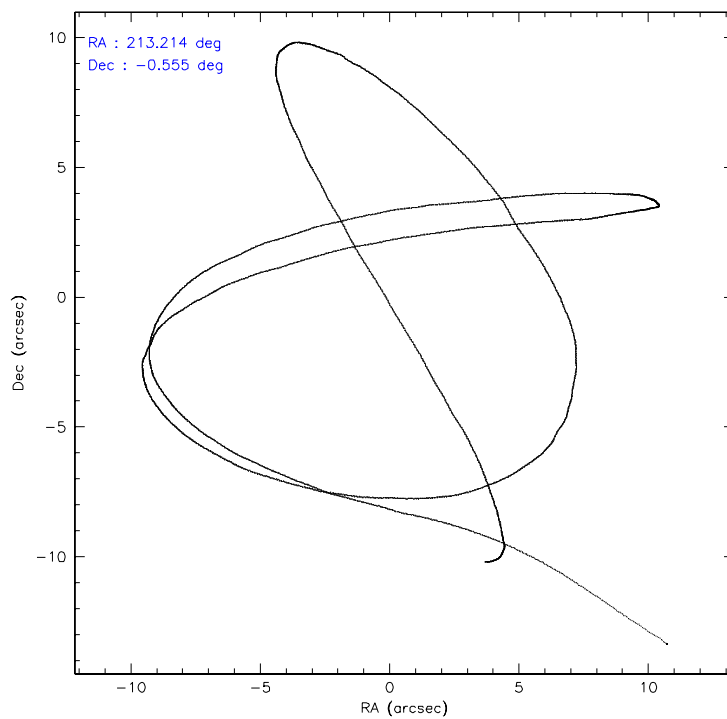
	ccd 2	ccd 3	ccd 5	ccd 6	ccd 7	ccd 8
level 1 events	14542	13183	22695	14467	18818	17535
rejected events	12985	11677	12394	12960	11939	14221
rejected %	89%	88%	54%	89%	63%	81%

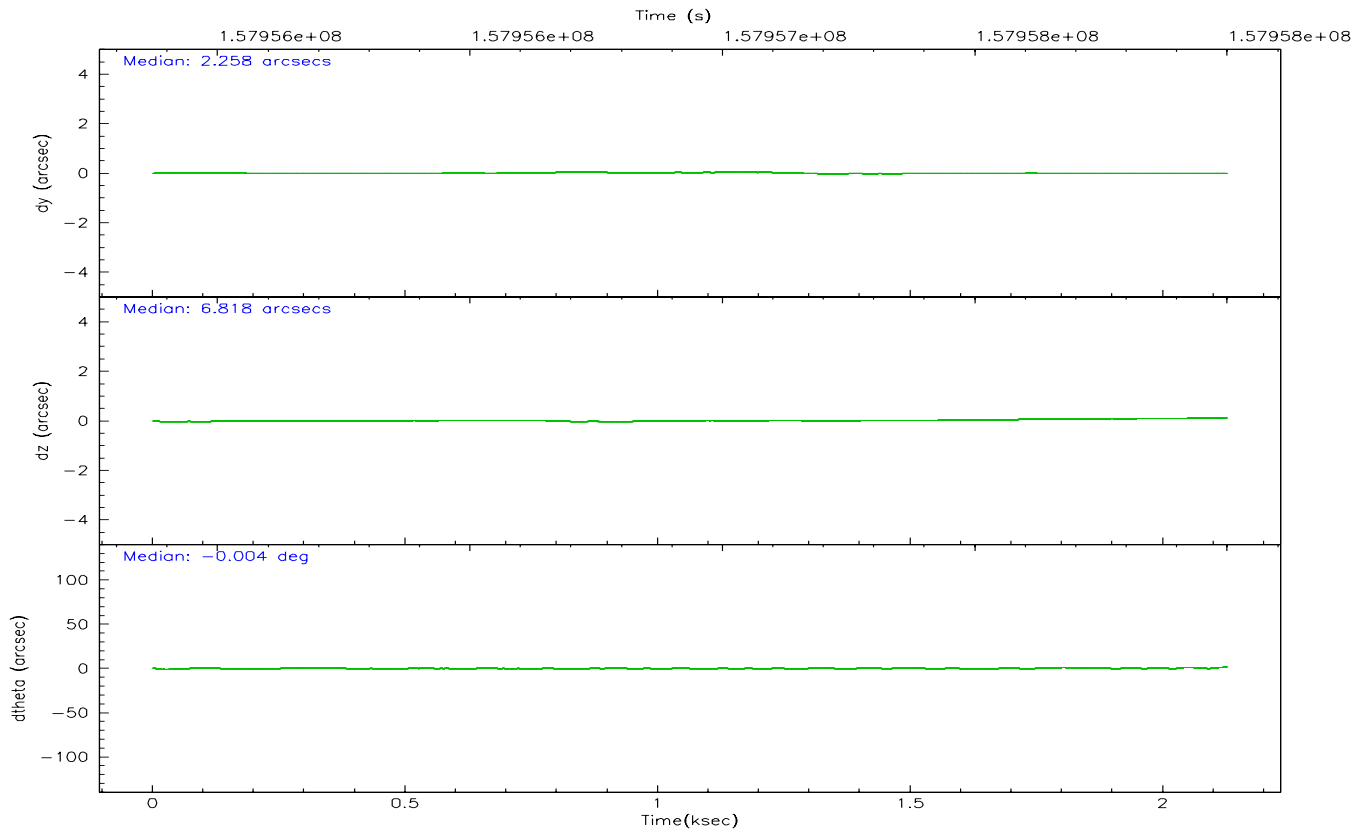
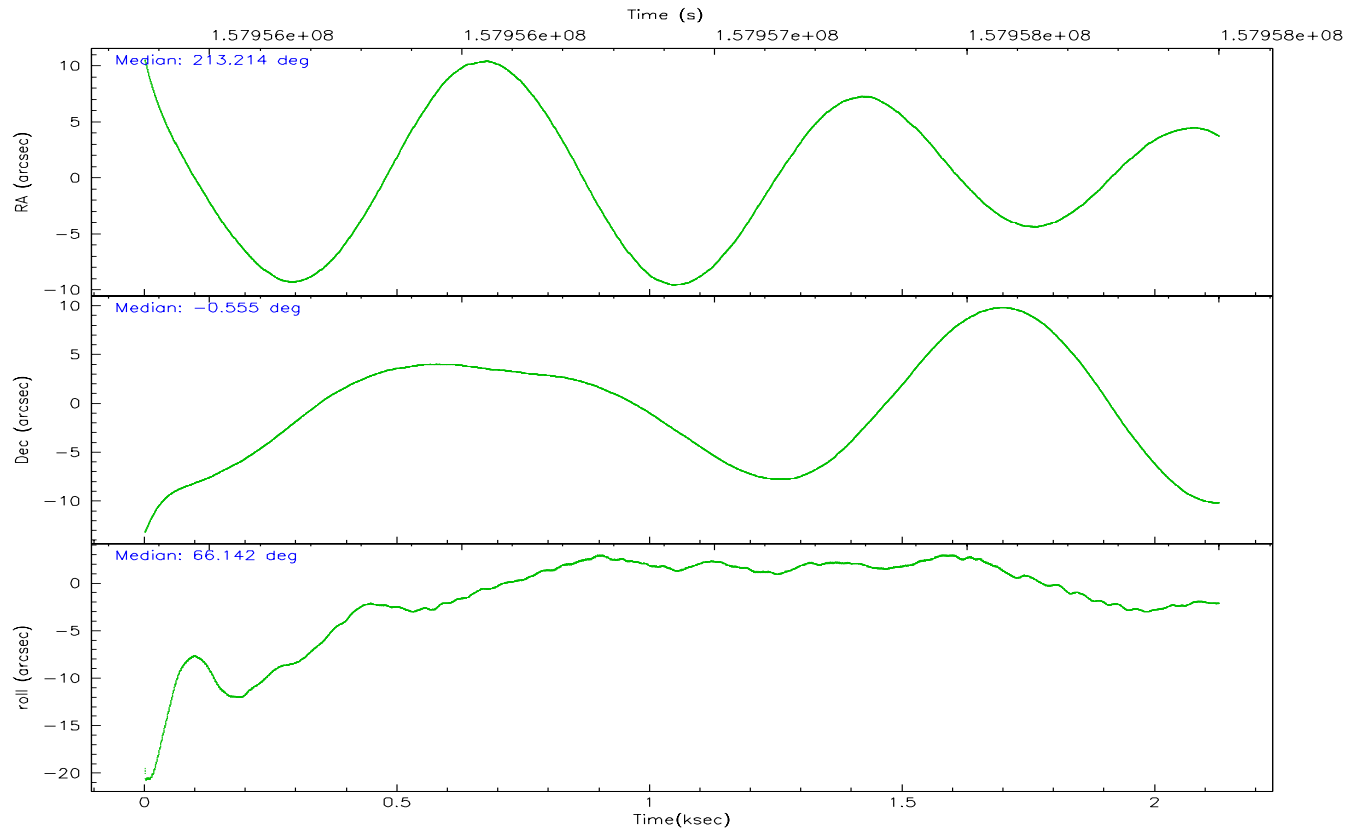
	ccd 2	ccd 3	ccd 5	ccd 6	ccd 7	ccd 8
grade 0 events	744	667	2384	635	464	1192
	5%	5%	10%	4%	2%	6%
grade 1 events	8	14	55	8	13	12
	0%	0%	0%	0%	0%	0%
grade 2 events	326	314	2963	335	1782	720
	2%	2%	13%	2%	9%	4%
grade 3 events	149	160	233	142	391	361
	1%	1%	1%	0%	2%	2%
grade 4 events	153	162	214	145	386	364
	1%	1%	0%	1%	2%	2%
grade 5 events	530	563	977	552	1242	791
	3%	4%	4%	3%	6%	4%
grade 6 events	254	287	5172	336	4275	843
	1%	2%	22%	2%	22%	4%
grade 7 events	12378	11016	10697	12314	10265	13252
	85%	83%	47%	85%	54%	75%

2.2 Compared Parameters

Parameter	Planned	Actual	Parameter	Planned	Actual
Instrument	ACIS	ACIS	Obspar format version number	6	6
Detector	ACIS-235678	ACIS-235678	Obspar file type	PREDICTED	ACTUAL
Grating	NONE	NONE	Obspar update status	NONE	UPDATED
Data mode	FAINT	FAINT	Number of optional ACIS chips dropped	0	0
Observation mode	POINTING	POINTING	On-chip summing requested	N	N
Pointing RA	213.217053	213.2137329136562	Subarray requested	NONE	NONE
Pointing Dec	-0.582030	-0.5551426525388234	Alternating exposures requested	N	N
Pointing Roll	65.991921	66.14844277354439	Primary exposure time	0.000000	3.2
SIM focus pos (mm)	-0.684267	-0.6828225247311905			
SIM defocus (mm)	0	0.001444936568705701			
SIM translation stage pos (mm)	-190.132523	-190.1400660498719			
SIM translation stage offset (mm)	0	0.00754346686406393			
Observation start time	157956001.184000	157954898.16266			
Observation start date	2003-01-03T04:38:57	2003-01-03T04:21:38			
Observation end time	157958001.184000	157958380.08781			
Observation end date	2003-01-03T05:12:17	2003-01-03T05:19:40			
Read mode	TIMED	TIMED			

2.3 Aspect



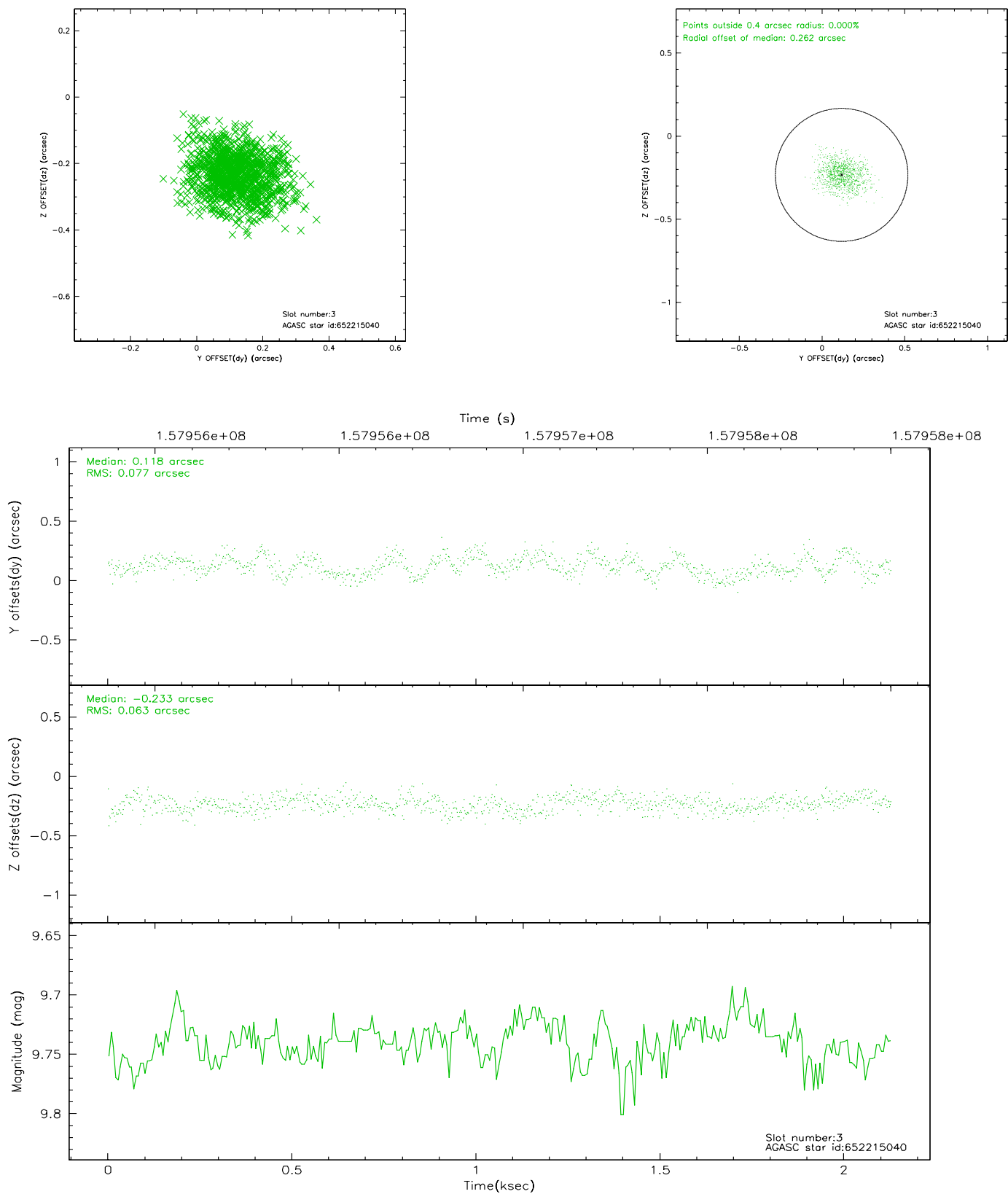


Slot Statistics

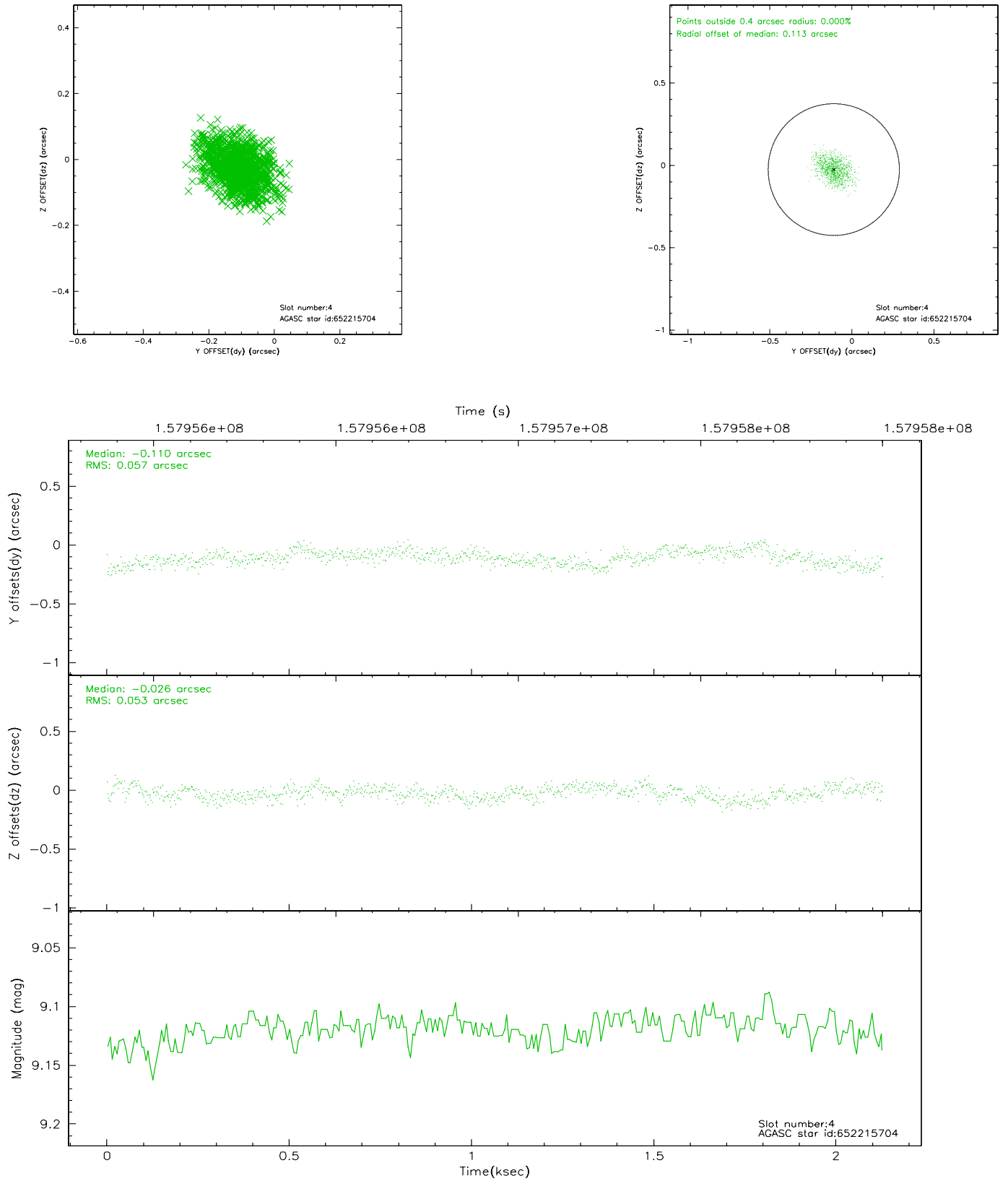
slot	status	id	mag	n_pts	med_dy	med_dz	dr1	dr2	ra	dec	mean_y	mean_z
0	FID	ACIS-S-2	7.11	519	-0.022	0.029	0.006	0.009	0.000000	0.000000	-754.89	-1727.97
1	FID	ACIS-S-4	7.20	519	-0.057	0.002	0.005	0.008	0.000000	0.000000	2156.95	177.34
2	FID	ACIS-S-5	7.24	519	0.047	-0.023	0.006	0.009	0.000000	0.000000	-1803.72	174.45
3	GUIDE	652215040	9.74	1038	0.118	-0.233	0.108	0.174	212.795459	-0.676910	-928.76	1247.32
4	GUIDE	652215704	9.12	1039	-0.110	-0.026	0.085	0.133	213.594661	-0.601169	490.09	-1268.21
5	GUIDE	652217496	10.44	1039	0.324	0.054	0.141	0.229	213.417741	-1.340047	-2197.19	-1771.26
6	GUIDE	652219312	9.99	1039	-0.176	0.121	0.114	0.189	214.017381	-0.315458	2047.62	-2242.63
7	GUIDE	652218384	9.70	1036	-0.158	0.080	0.119	0.194	214.051812	-0.360037	1955.57	-2421.66

2.4 Star Slots

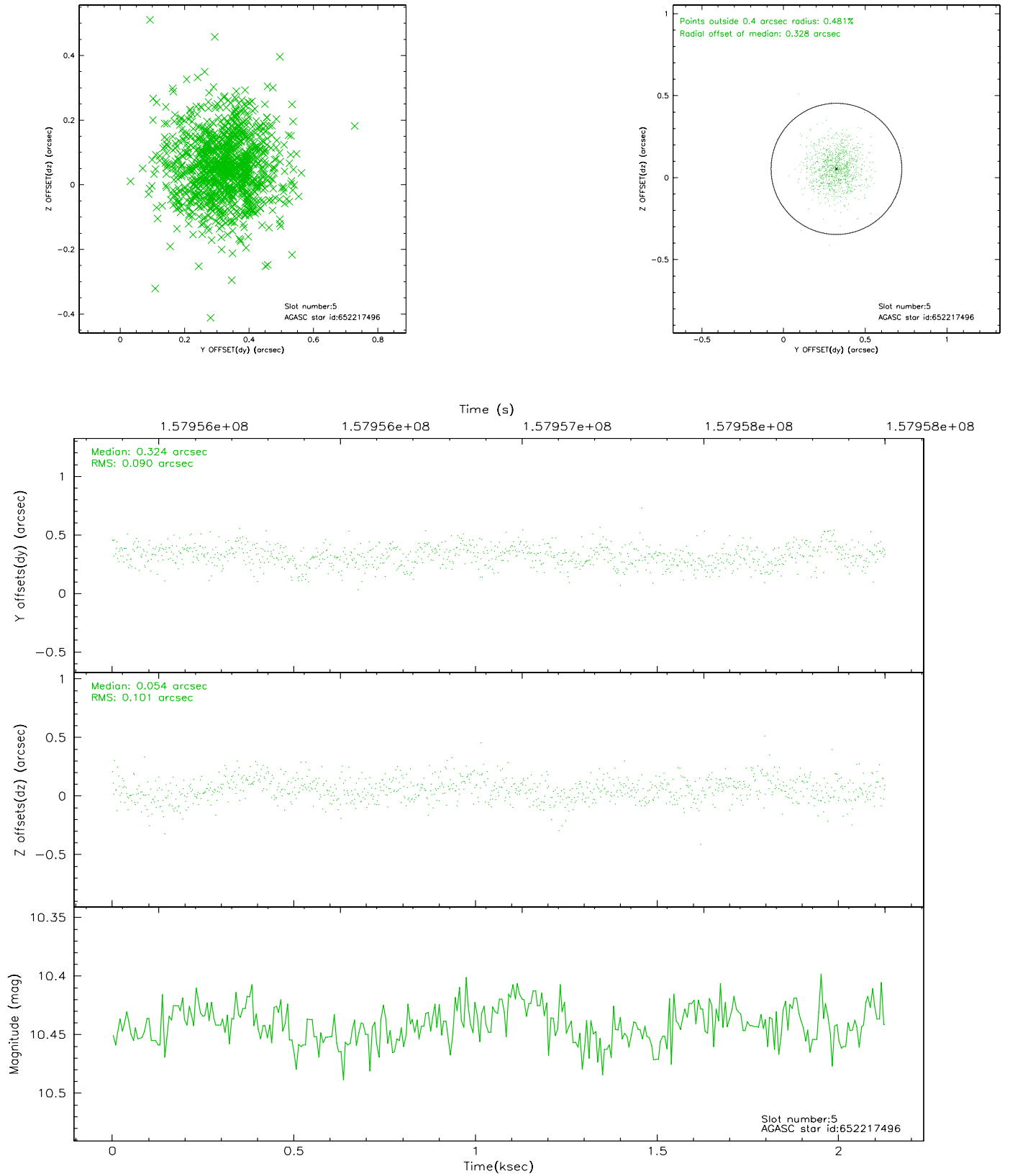
2.4.1 Slot 3



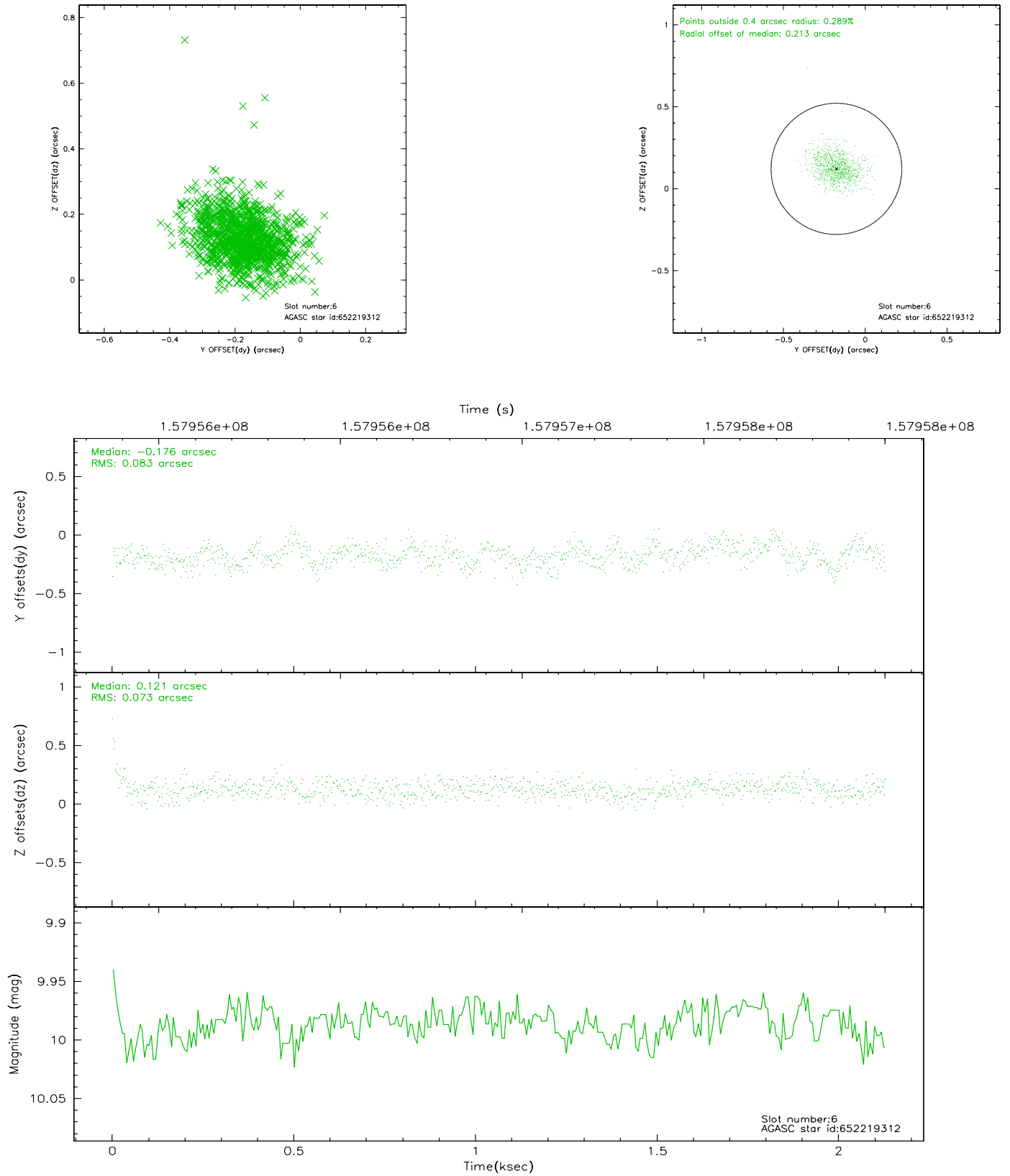
2.4.2 Slot 4



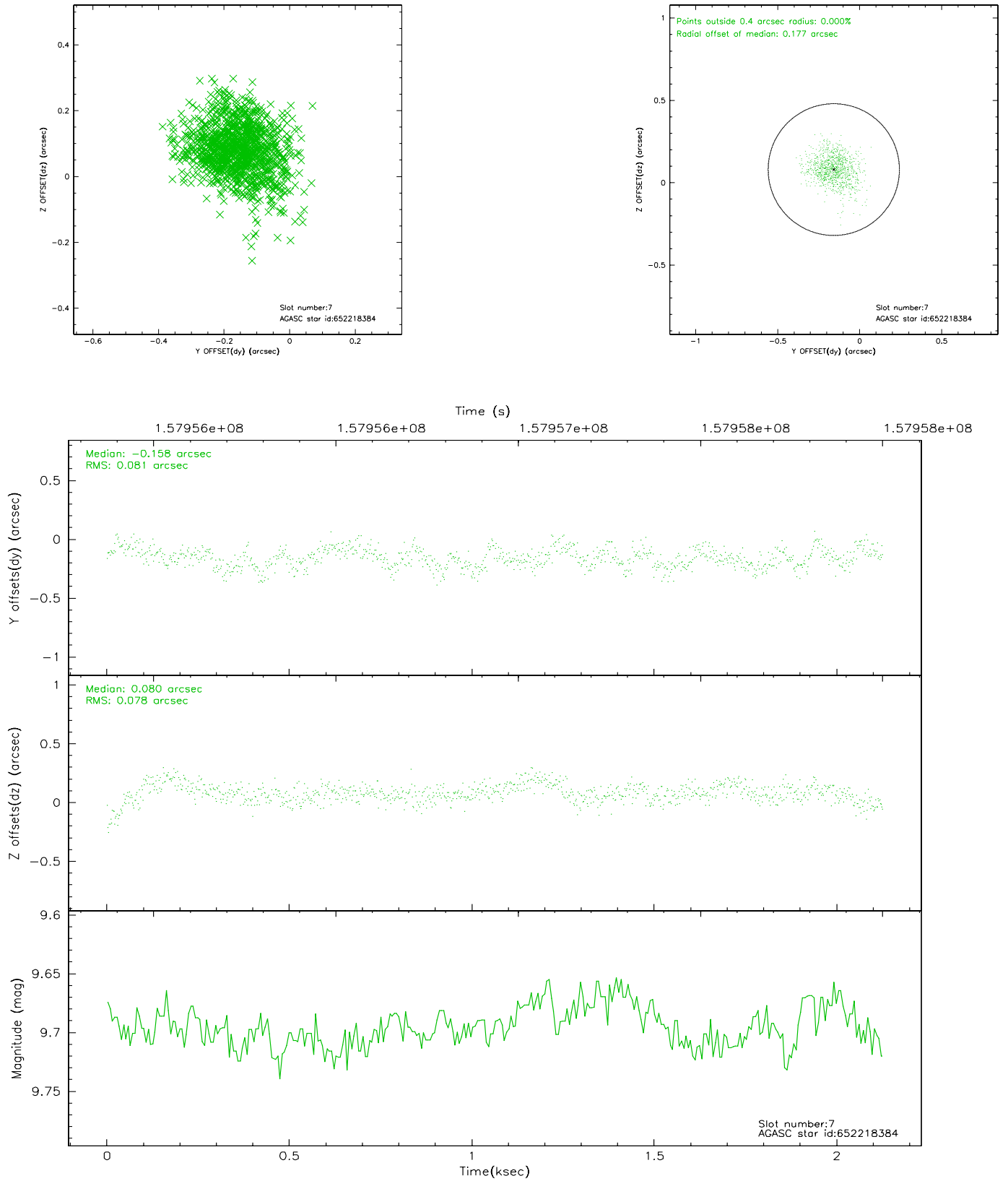
2.4.3 Slot 5



2.4.4 Slot 6

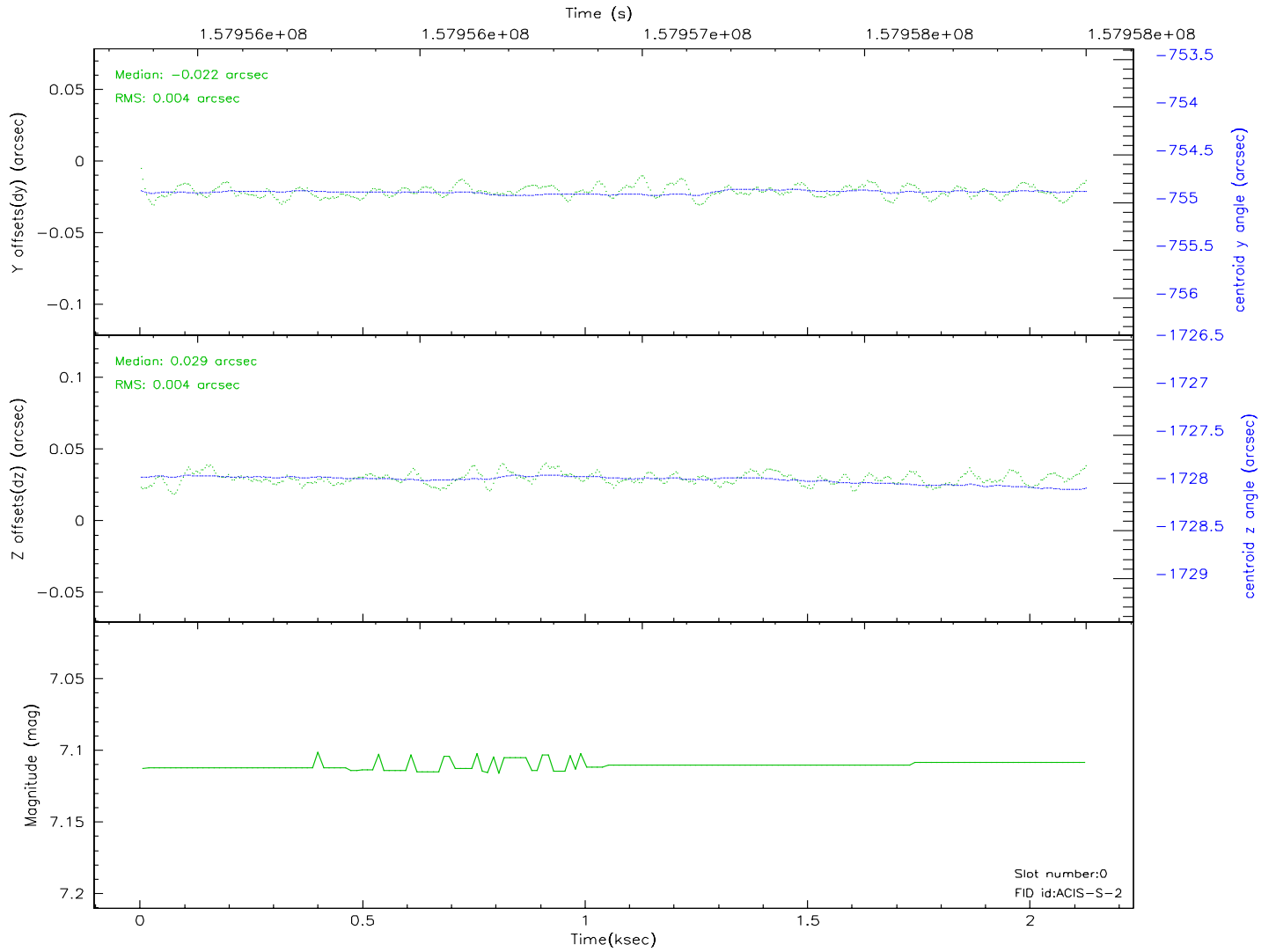
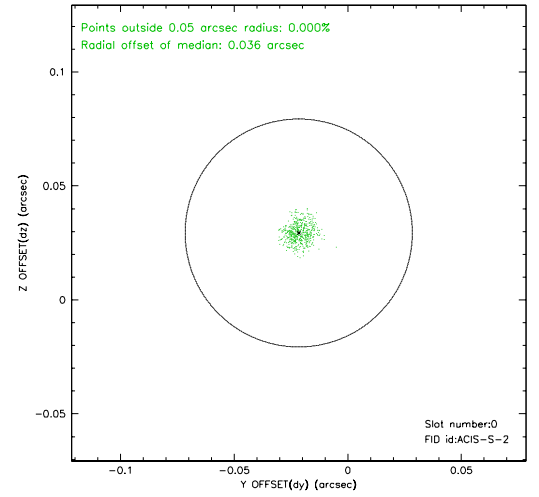
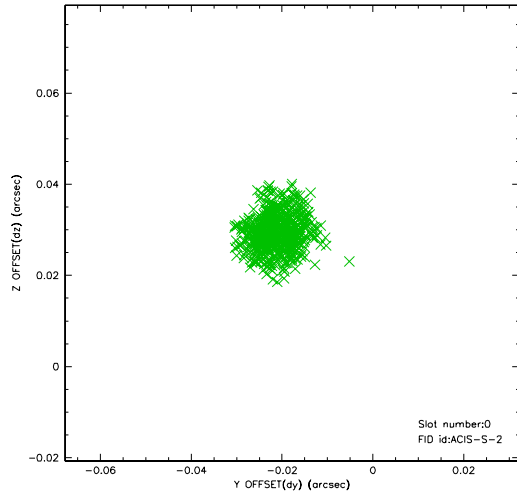


2.4.5 Slot 7

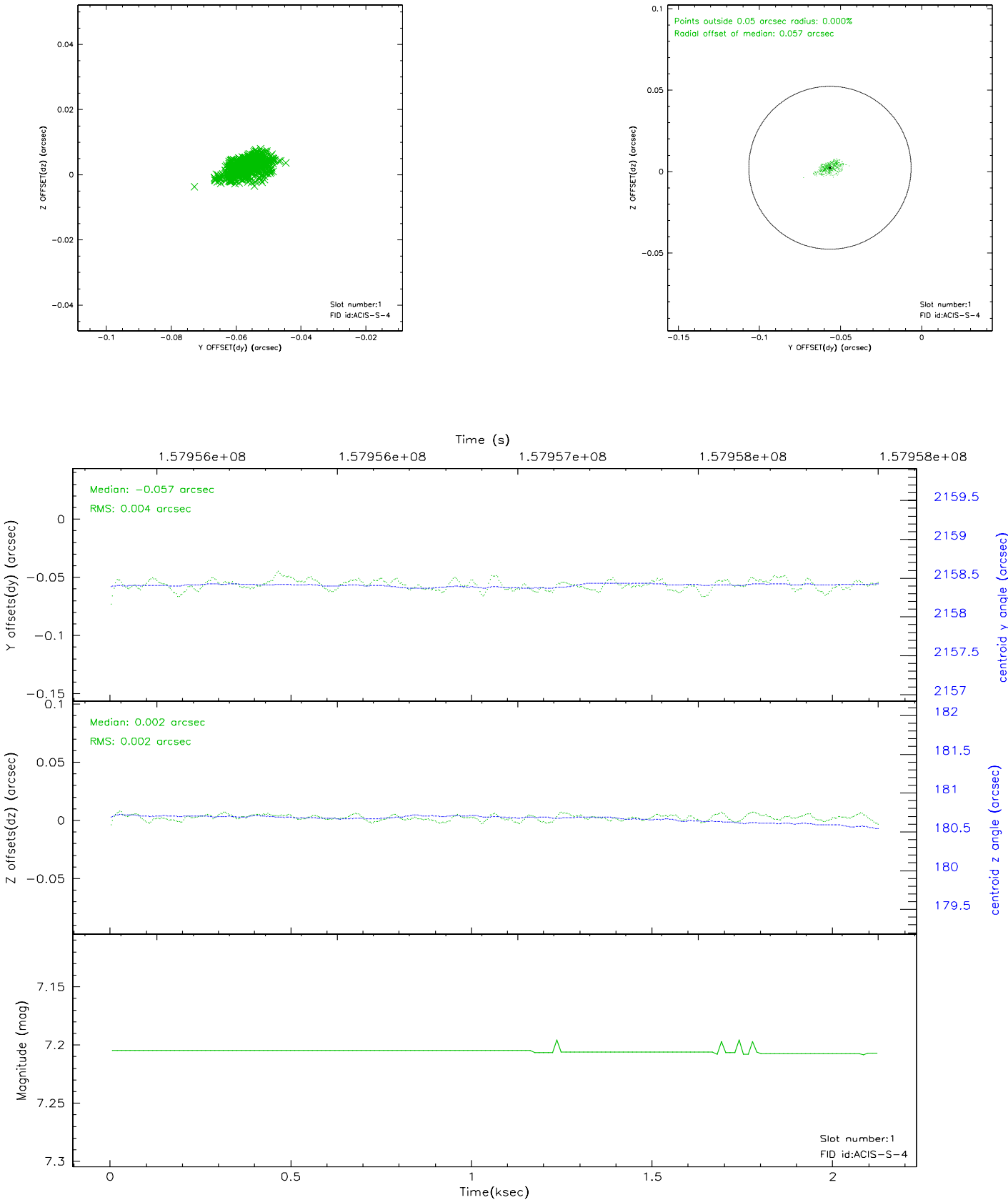


2.5 FID Slots

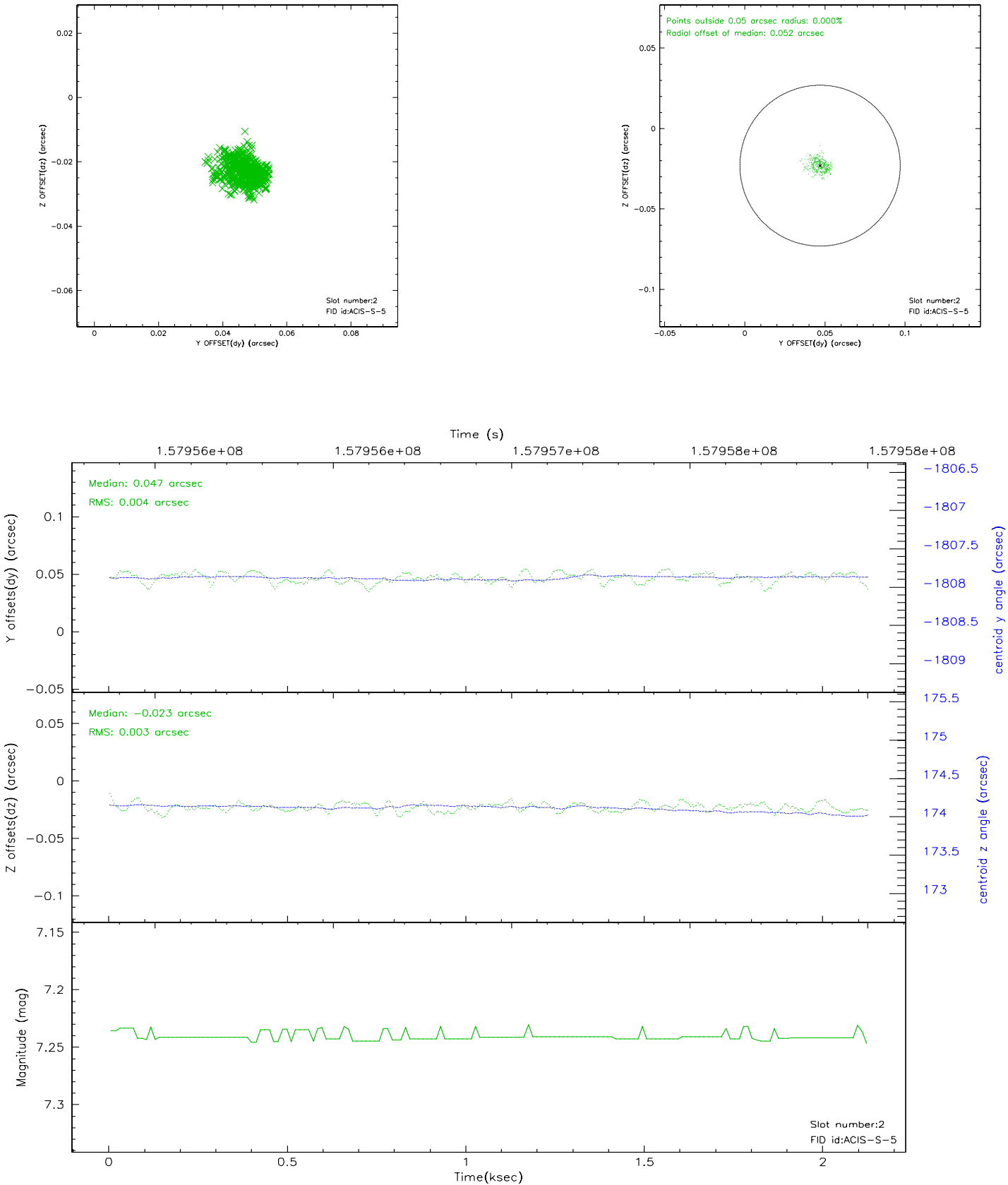
2.5.1 Slot 0



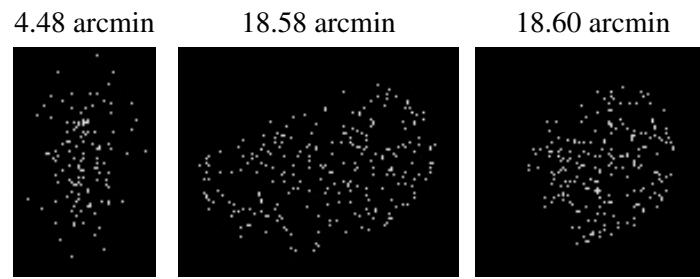
2.5.2 Slot 1



2.5.3 Slot 2



3 Point Sources



A Summary

A.1 Status

V&V Scientist	Beth Sundheim
V&V Date (YYYY-MM-DD)	2006.10.18
V&V Edition	1
V&V Disposition and Status	OK
V&V Charge Time	2.121

A.2 Comments