

# V&V Reference Report

## L2 ASCDS Version : 8.4.5

Observation 4070 - L2 Version 3  
Chandra X-Ray Center

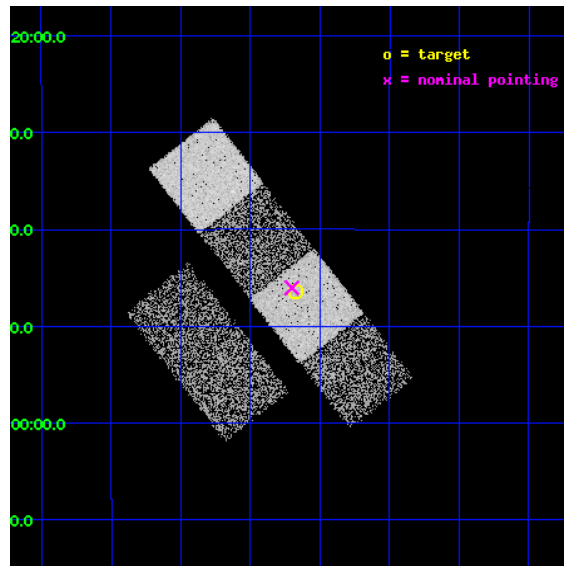
L2 Processing Date : Oct 21 2012

## Contents

<b>1</b>	<b>Front</b>	<b>2</b>
<b>2</b>	<b>OBI</b>	<b>3</b>
2.1	OBI . . . . .	3
2.1.1	Images . . . . .	3
2.1.2	Bias . . . . .	3
2.1.3	Parameters . . . . .	4
2.1.4	Events . . . . .	4
2.2	Compared Parameters . . . . .	5
2.3	Aspect . . . . .	6
2.4	Star Slots . . . . .	9
2.4.1	Slot 3 . . . . .	9
2.4.2	Slot 4 . . . . .	10
2.4.3	Slot 5 . . . . .	11
2.4.4	Slot 6 . . . . .	12
2.4.5	Slot 7 . . . . .	13
2.5	FID Slots . . . . .	14
2.5.1	Slot 0 . . . . .	14
2.5.2	Slot 1 . . . . .	15
2.5.3	Slot 2 . . . . .	16
<b>A</b>	<b>Summary</b>	<b>17</b>
A.1	Status . . . . .	17
A.2	Comments . . . . .	17

# 1 Front

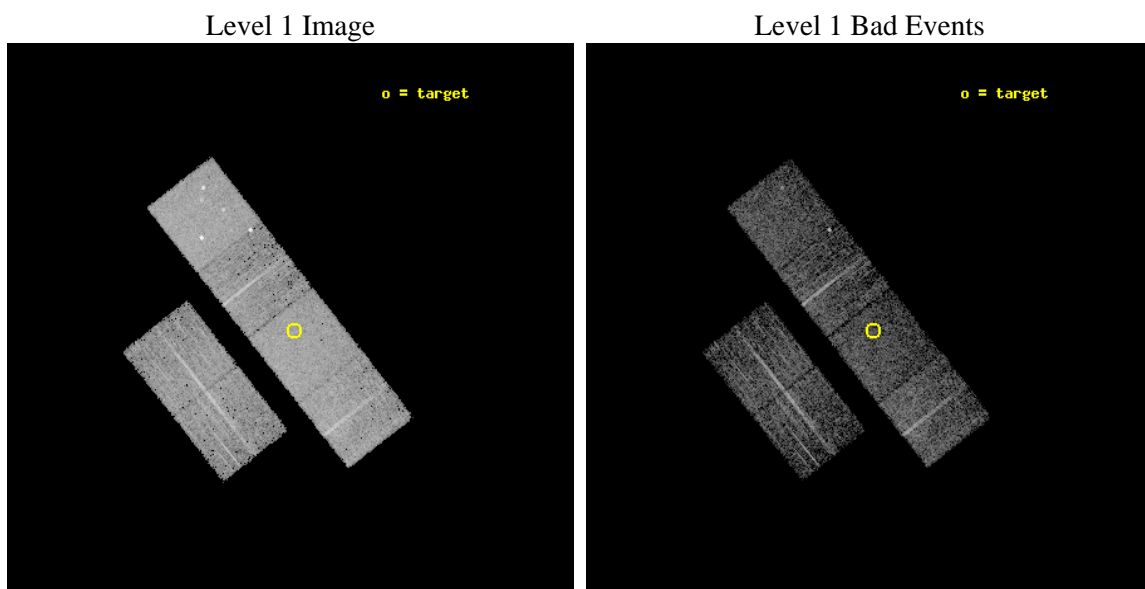
seq_num	700749	Sequence number
obs_id	4070	Observation id
title	A CHANDRA SURVEY OF THE MOST LUMINOUS QUASARS AT $Z > 4$	Proposal titl
observer	Dr Cristian Vignali	Principal investigator
object	BRI 1117-1330	Source name
dtcycle	0	&#160
cycle	P	events from which exps? Prim/Second/Both
ra_targ	170.042917	Observer's specified target RA [deg]
dec_targ	-13.773806	Observer's specified target Dec [deg]
ra_nom	170.05039777607	Nominal RA [deg]
dec_nom	-13.767342209914	Nominal Dec [deg]
roll_nom	51.931190555332	Nominal Roll [deg]
revision	3	Processing version of data
ontime	4757.0437477231	Sum of GTIs [s]
livetime	4696.8071954416	Livetime [s]
ontime2	4757.0847877264	Sum of GTIs [s]
ontime3	4756.9206476212	Sum of GTIs [s]
ontime5	4757.0027276278	Sum of GTIs [s]
ontime6	4756.9616876245	Sum of GTIs [s]
ontime7	4757.0437477231	Sum of GTIs [s]
ontime8	4753.6385278106	Sum of GTIs [s]
l2events	48037	Number of level 2 events



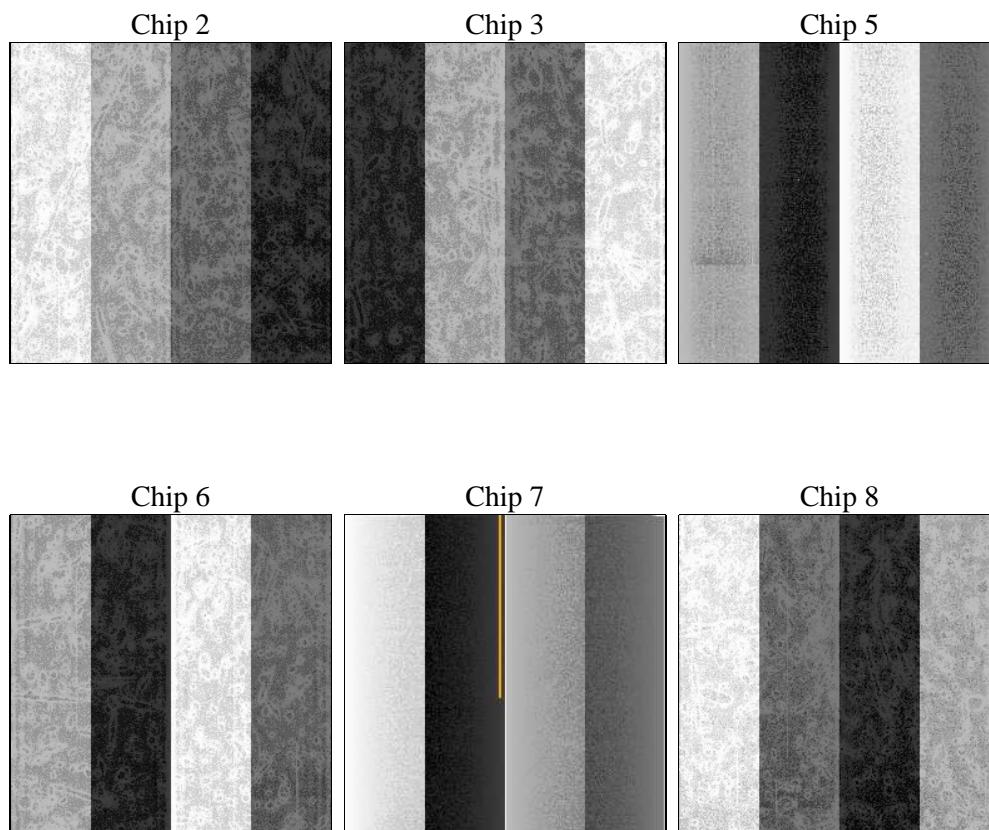
## 2 OBI

### 2.1 OBI

#### 2.1.1 Images



#### 2.1.2 Bias



### 2.1.3 Parameters

obi_num	0	Obi number	sched_exp_time	5000.000000	[s] Scheduled observation exposure time
ascdsver	8.4.5	Processing system revision	ontime	4757.0437477231	Sum of GTIs [s]
caldbver	4.5.2	&#160	ontime2	4757.0847877264	Sum of GTIs [s]
date	2012-10-21T05:34:04	Date and time of file creation	ontime3	4756.9206476212	Sum of GTIs [s]
revision	3	Processing version of data	ontime5	4757.0027276278	Sum of GTIs [s]
			ontime6	4756.9616876245	Sum of GTIs [s]
			ontime7	4757.0437477231	Sum of GTIs [s]
			ontime8	4753.6385278106	Sum of GTIs [s]
			l1events	209366	Number of level 1 events

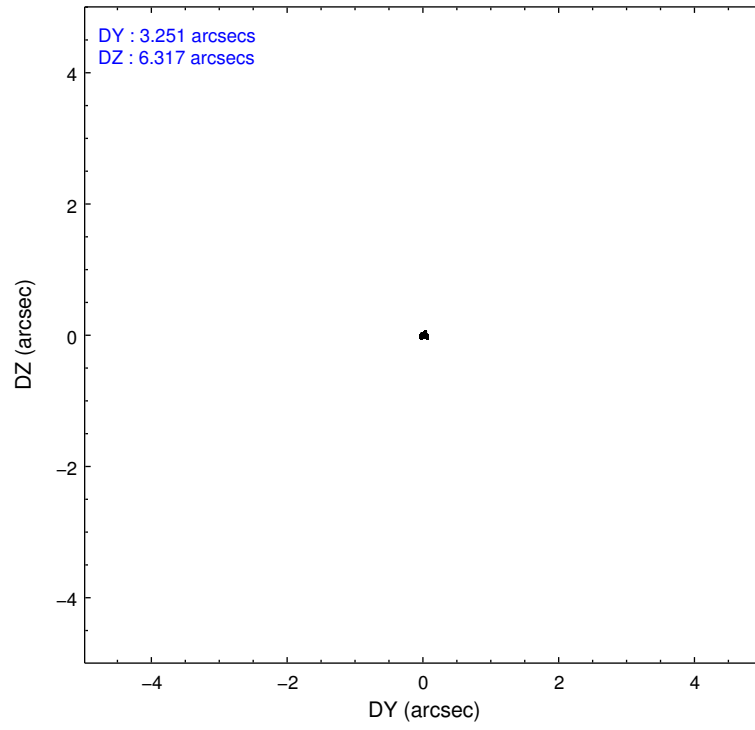
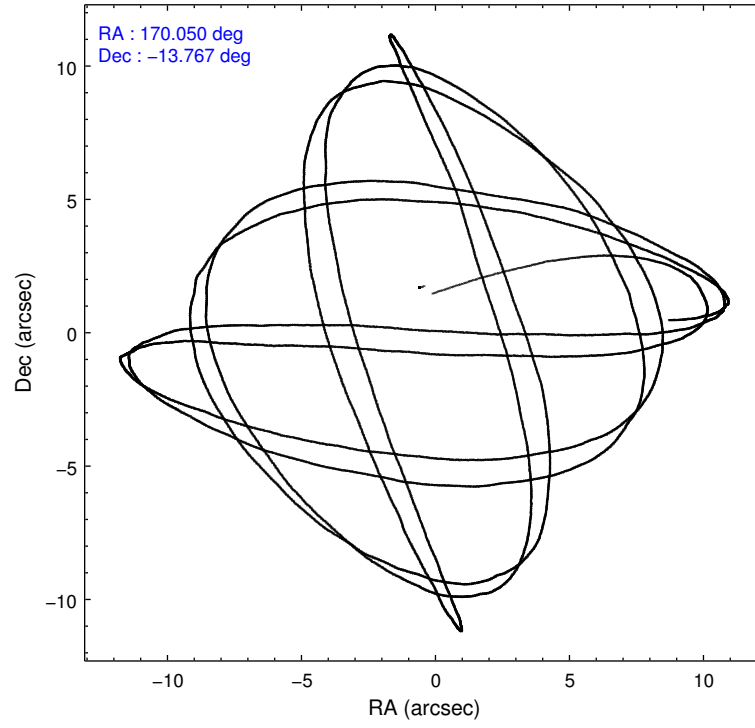
### 2.1.4 Events

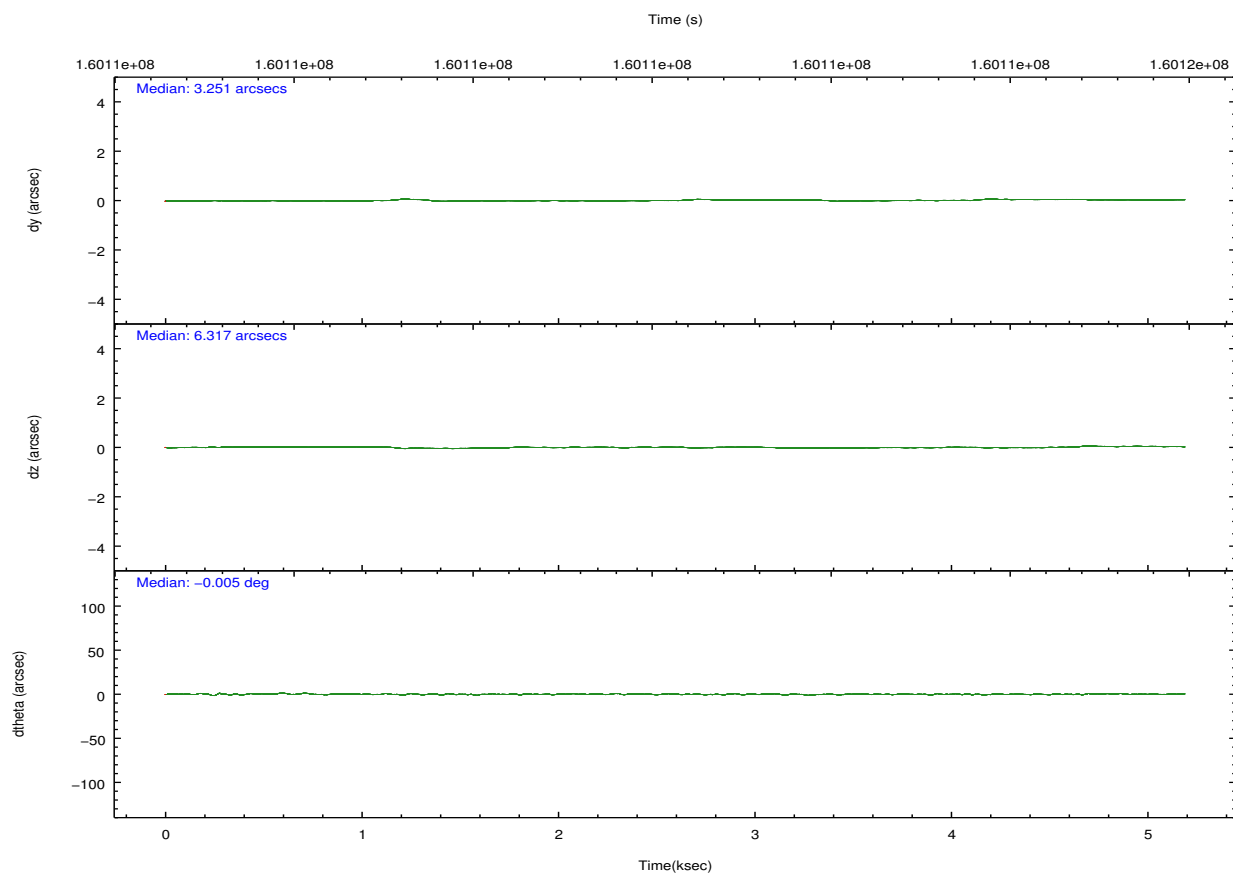
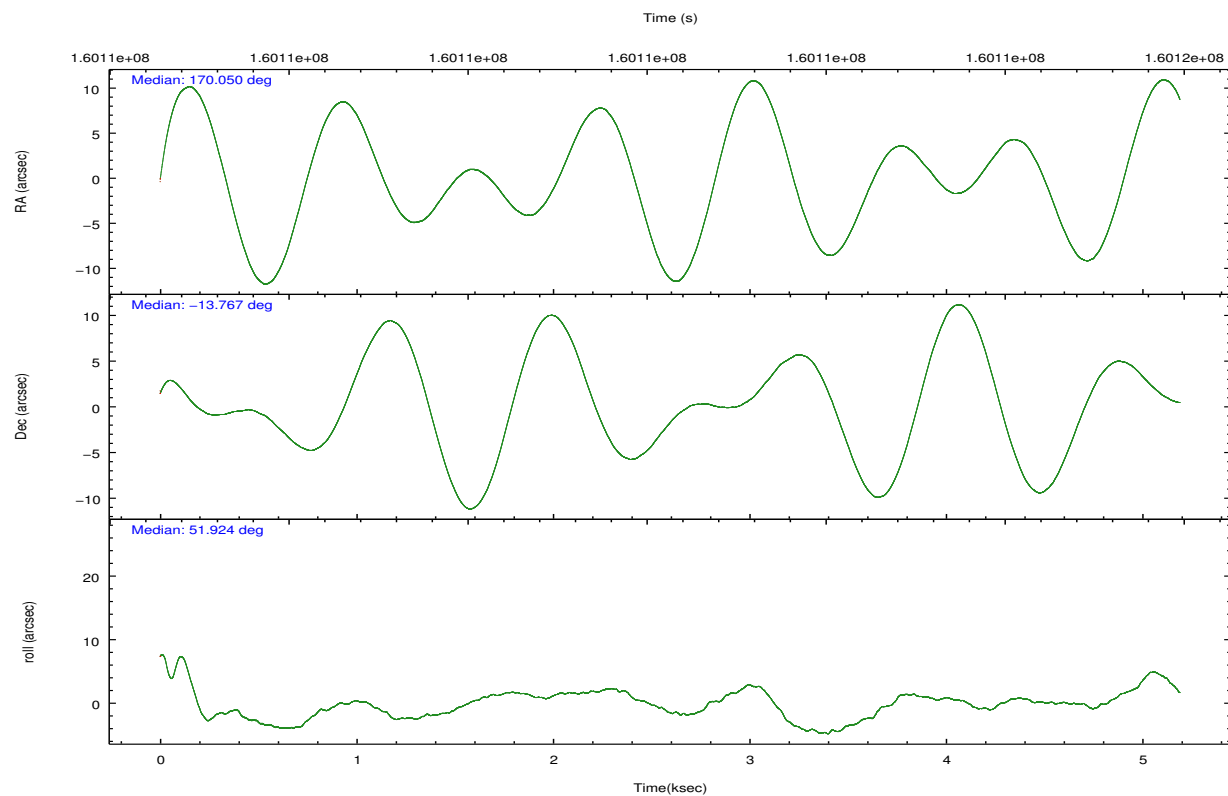
	ccd 2	ccd 3	ccd 5	ccd 6	ccd 7	ccd 8		ccd 2	ccd 3	ccd 5	ccd 6	ccd 7	ccd 8
level 1 events	29157	28016	46670	29058	39001	37464	grade 0 events	1402	1478	3571	1524	1633	2254
rejected events	25880	24628	23525	25520	22236	30518		4%	5%	7%	5%	4%	6%
rejected %	88%	87%	50%	87%	57%	81%	grade 1 events	12	16	217	14	38	17
								0%	0%	0%	0%	0%	0%
							grade 2 events	676	692	6706	680	3242	1474
								2%	2%	14%	2%	8%	3%
							grade 3 events	333	322	994	322	1482	770
								1%	1%	2%	1%	3%	2%
							grade 4 events	321	341	875	318	1475	686
								1%	1%	1%	1%	3%	1%
							grade 5 events	1061	1242	3292	1313	3452	1593
								3%	4%	7%	4%	8%	4%
							grade 6 events	545	558	11011	695	8957	1768
								1%	1%	23%	2%	22%	4%
							grade 7 events	24807	23367	20004	24192	18722	28902
								85%	83%	42%	83%	48%	77%

## 2.2 Compared Parameters

Parameter	Planned	Actual	Parameter	Planned	Actual
Instrument	ACIS	ACIS	Obspar format version number	7	7
Detector	ACIS-235678	ACIS-235678	Obspar file type	PREDICTED	ACTUAL
Grating	NONE	NONE	Obspar update status	NONE	UPDATED
Data mode	FAINT	FAINT	Number of optional ACIS chips dropped	0	0
Observation mode	POINTING	POINTING	On-chip summing requested	N	N
[deg] Pointing RA	170.046777	170.0503977760677	Subarray requested	NONE	NONE
[deg] Pointing Dec	-13.794360	-13.76734220991429	Alternating exposures requested	N	N
[deg] Pointing Roll	51.773670	51.93119055533187	[s] Primary exposure time	0.000000	3.2
[mm] SIM focus pos	-0.684267	-0.6828225247311905			
[mm] SIM defocus	0	0.001444936568705701			
[mm] SIM translation stage pos	-190.132523	-190.1425803651734			
[mm] SIM translation stage offset	0	0.01005778216563158			
[s] Observation start time (MET)	160109725.184000	160108912.17781			
Observation start date	2003-01-28T02:54:21	2003-01-28T02:41:52			
[s] Observation end time (MET)	160114725.184000	160115510.61558			
Observation end date	2003-01-28T04:17:41	2003-01-28T04:31:50			
Read mode	TIMED	TIMED			

## 2.3 Aspect



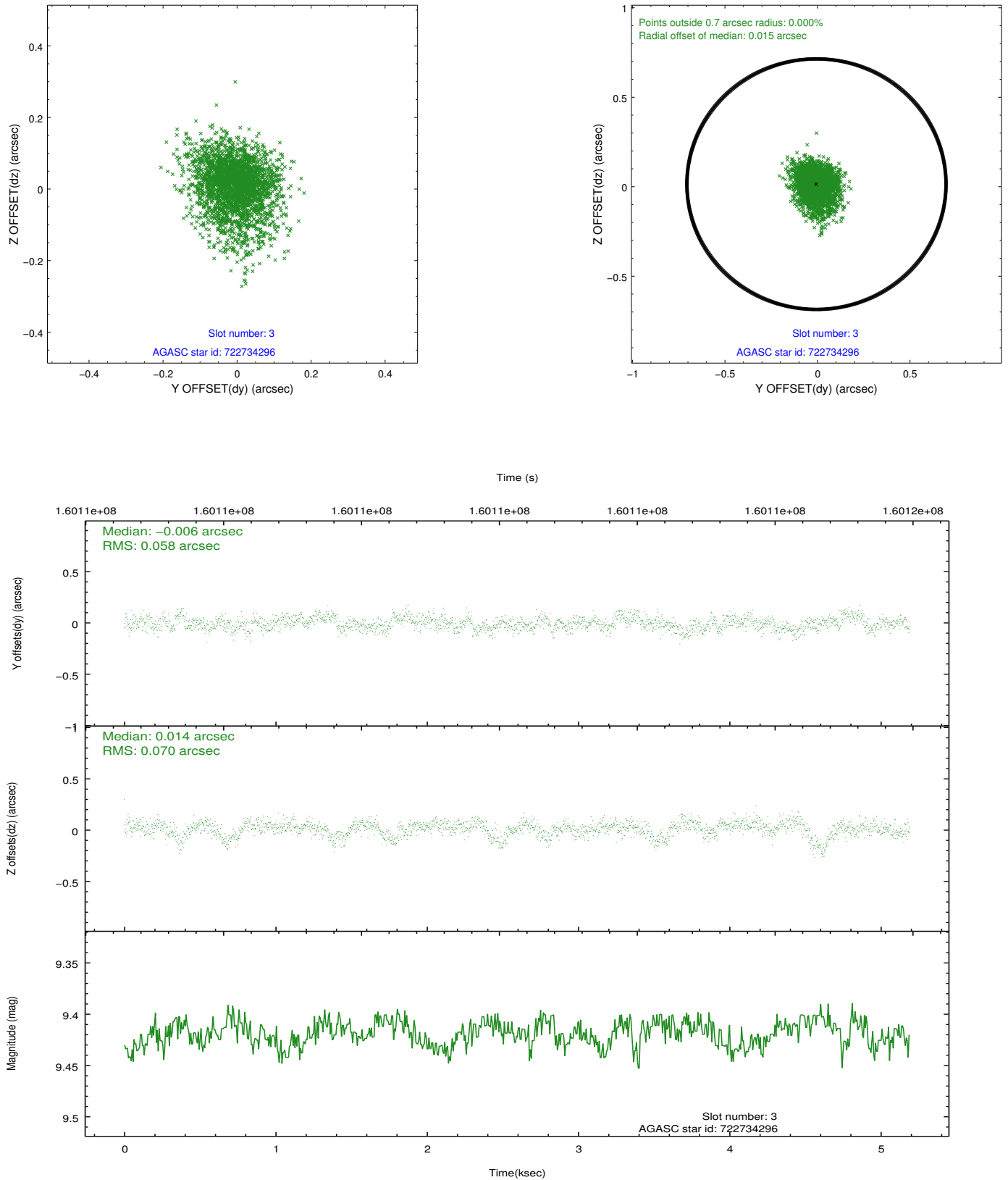


### Slot Statistics

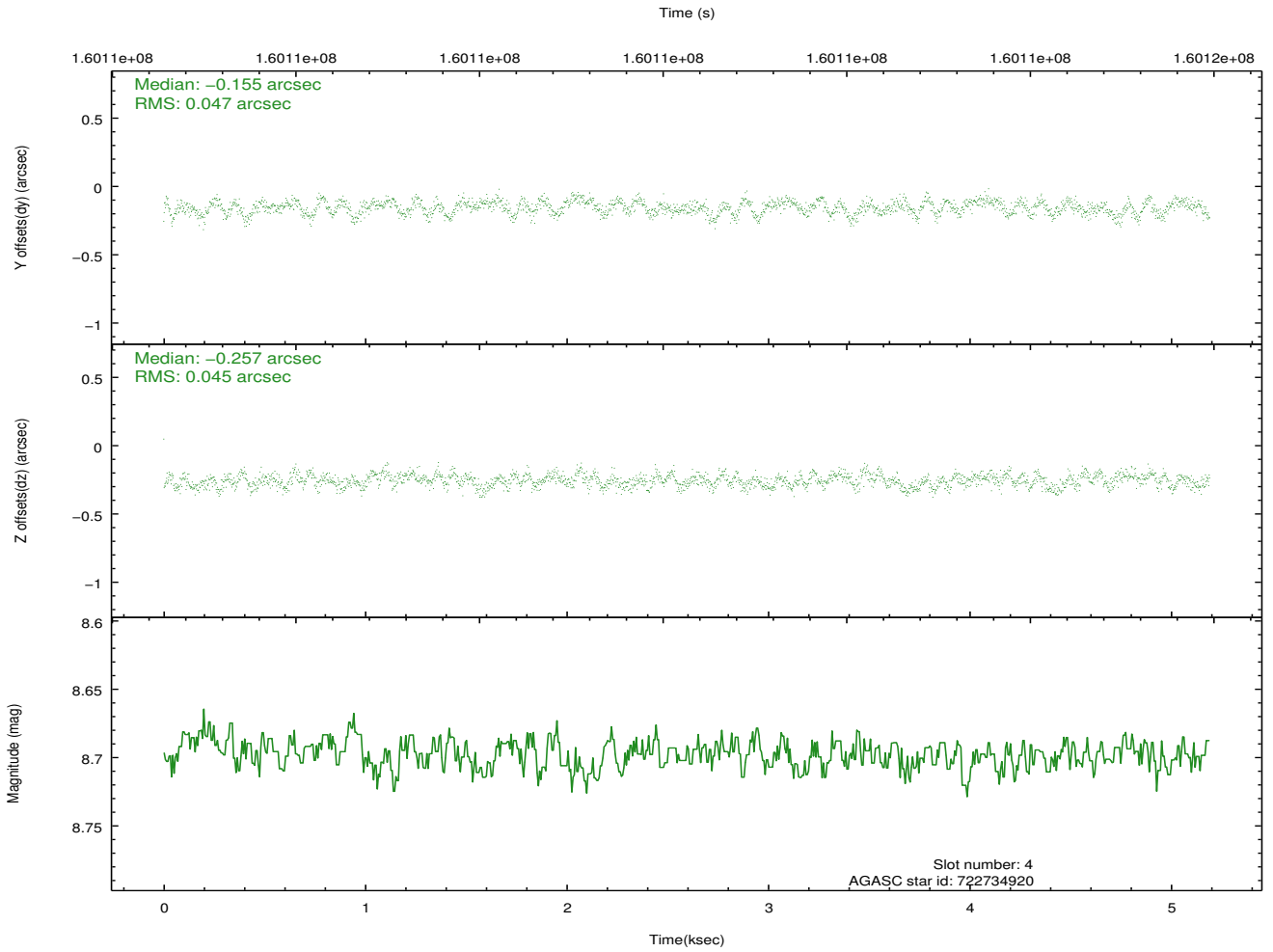
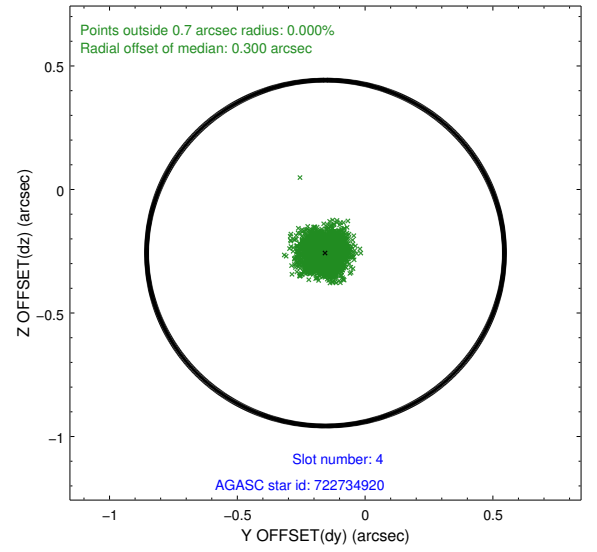
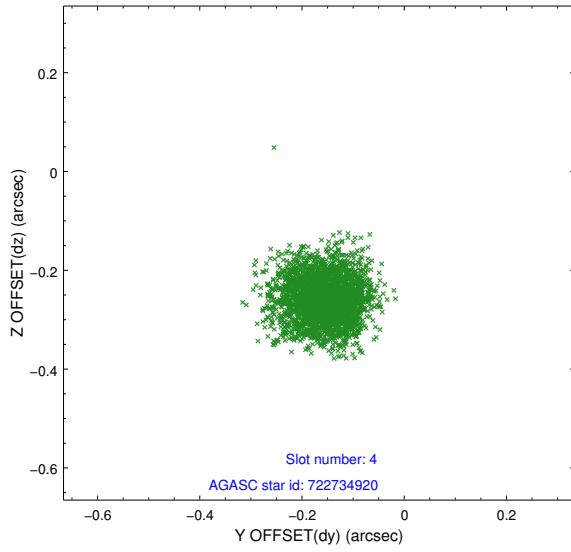
slot	status	id	mag	n_pts	med_dy	med_dz	dr1	dr2	ra	dec	mean_y	mean_z
0	FID	ACIS-S-2	7.11	1267	-0.041	-0.002	0.007	0.011	0.000000	0.000000	-755.91	-1727.43
1	FID	ACIS-S-4	7.21	1267	0.033	0.020	0.005	0.010	0.000000	0.000000	2156.87	179.94
2	FID	ACIS-S-5	7.24	1267	-0.023	-0.009	0.006	0.011	0.000000	0.000000	-1807.27	174.81
3	GUIDE	722734296	9.42	2533	-0.006	0.014	0.094	0.165	169.928817	-13.452494	711.06	1086.28
4	GUIDE	722734920	8.70	2533	-0.155	-0.257	0.071	0.109	169.791250	-13.157470	1246.37	2122.77
5	GUIDE	722737128	9.97	2529	0.085	0.055	0.111	0.180	169.894888	-14.226568	-1549.76	-545.49
6	GUIDE	722737720	7.22	2533	0.032	0.125	0.058	0.090	170.053449	-13.884576	-241.28	-219.05
7	GUIDE	722742384	7.73	2532	0.044	0.074	0.068	0.108	170.286748	-14.081276	-293.02	-1297.32

## 2.4 Star Slots

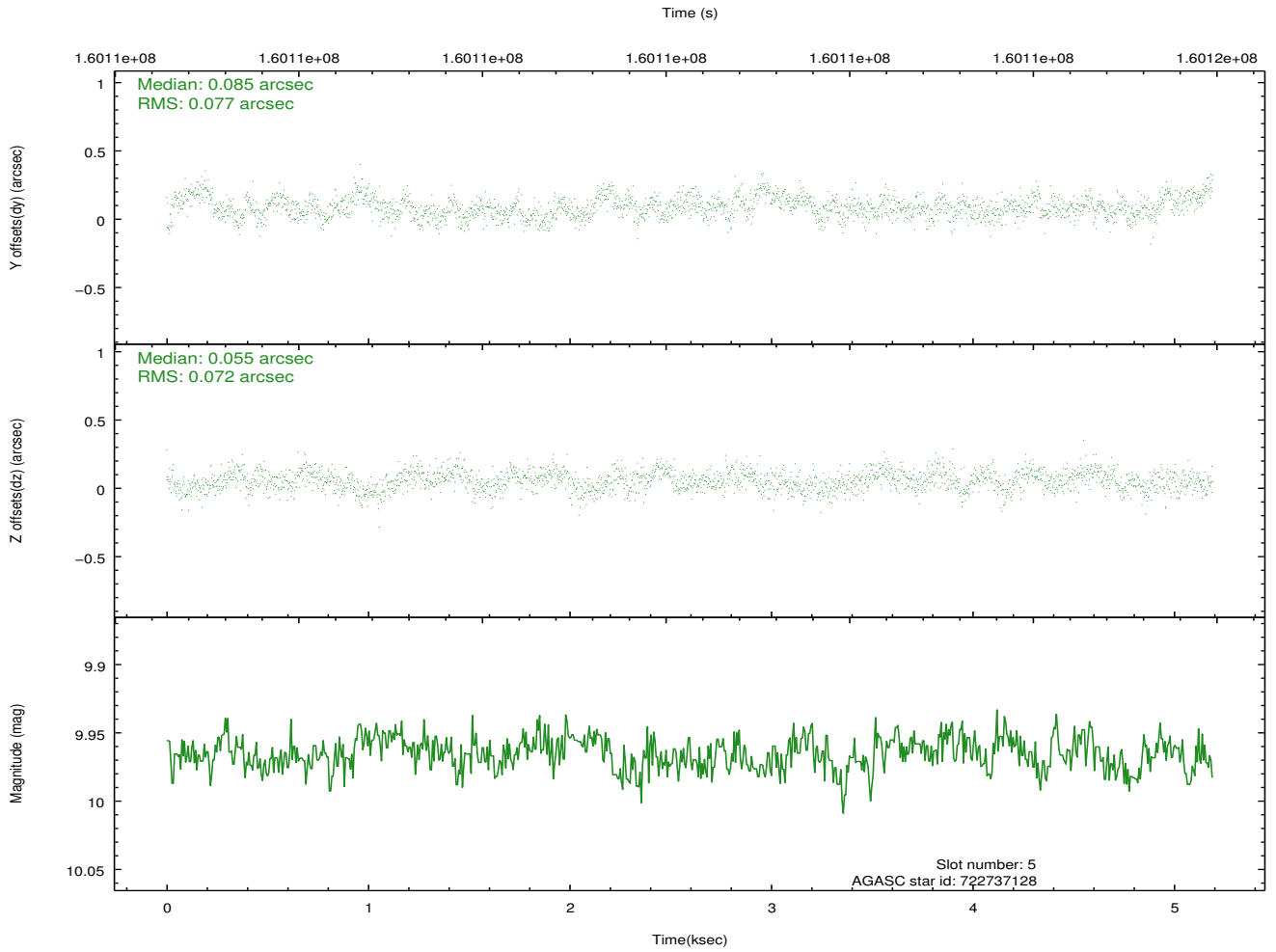
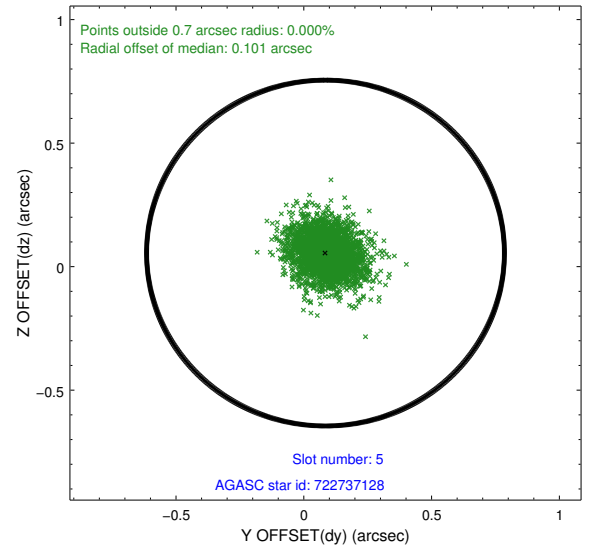
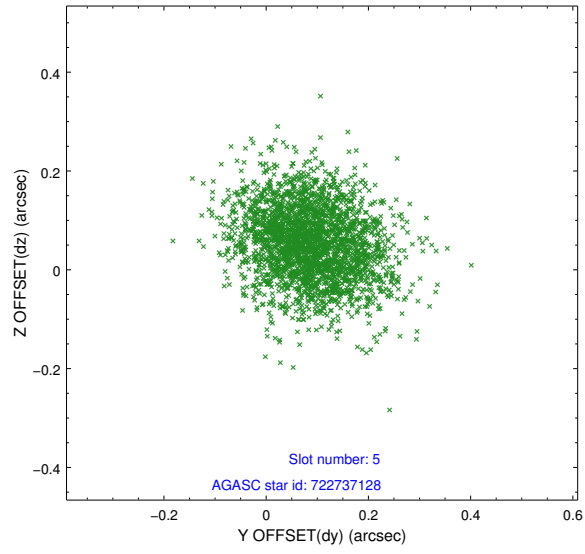
### 2.4.1 Slot 3



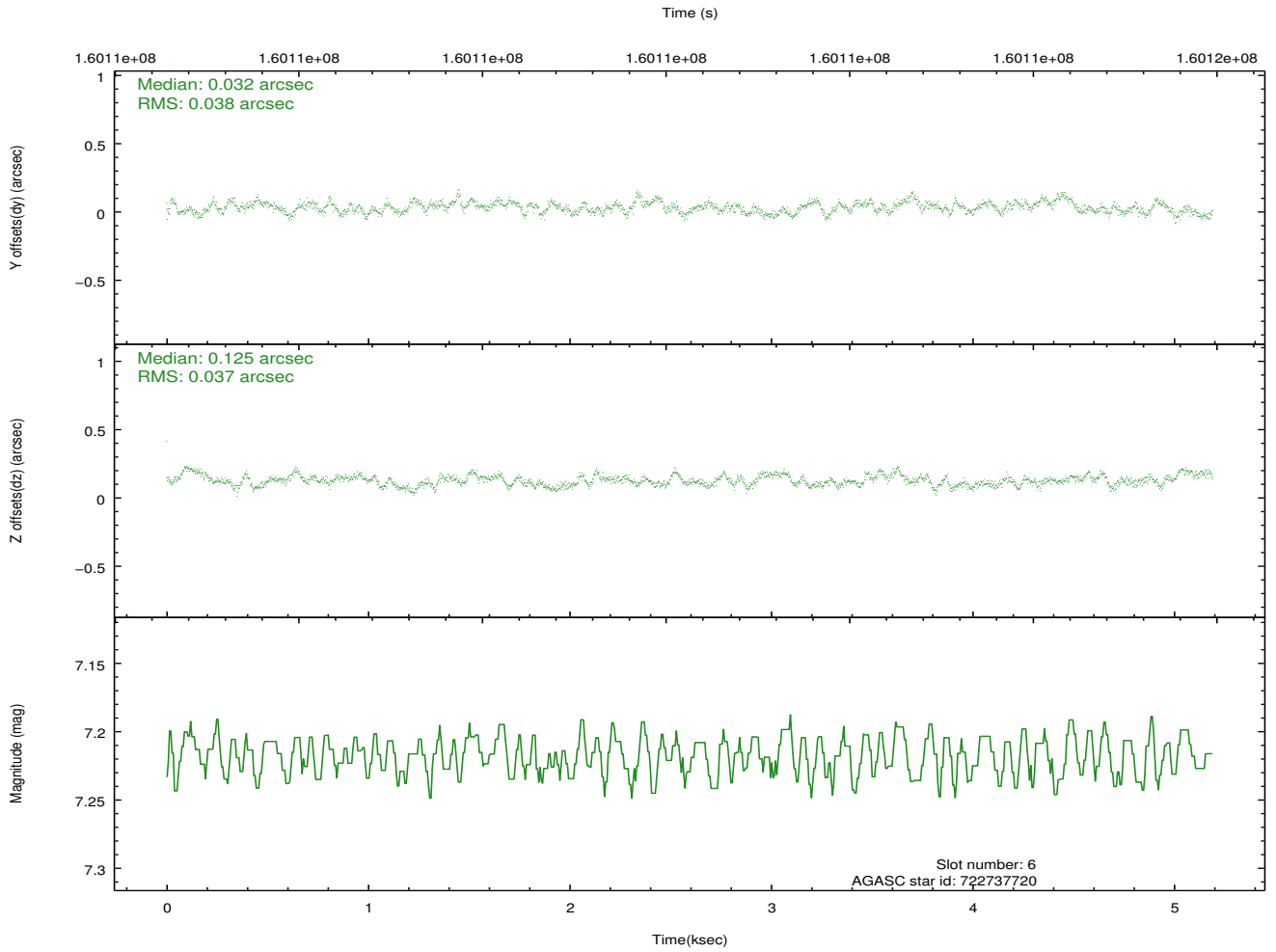
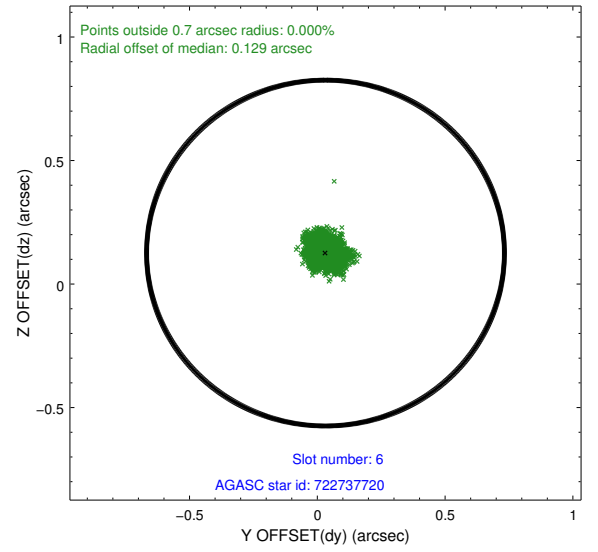
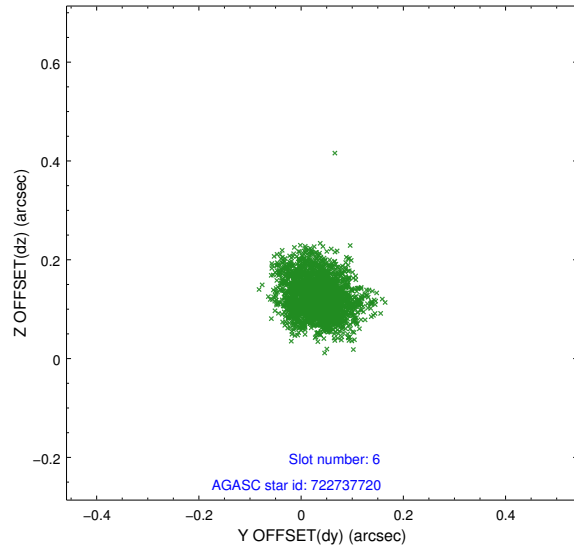
## 2.4.2 Slot 4



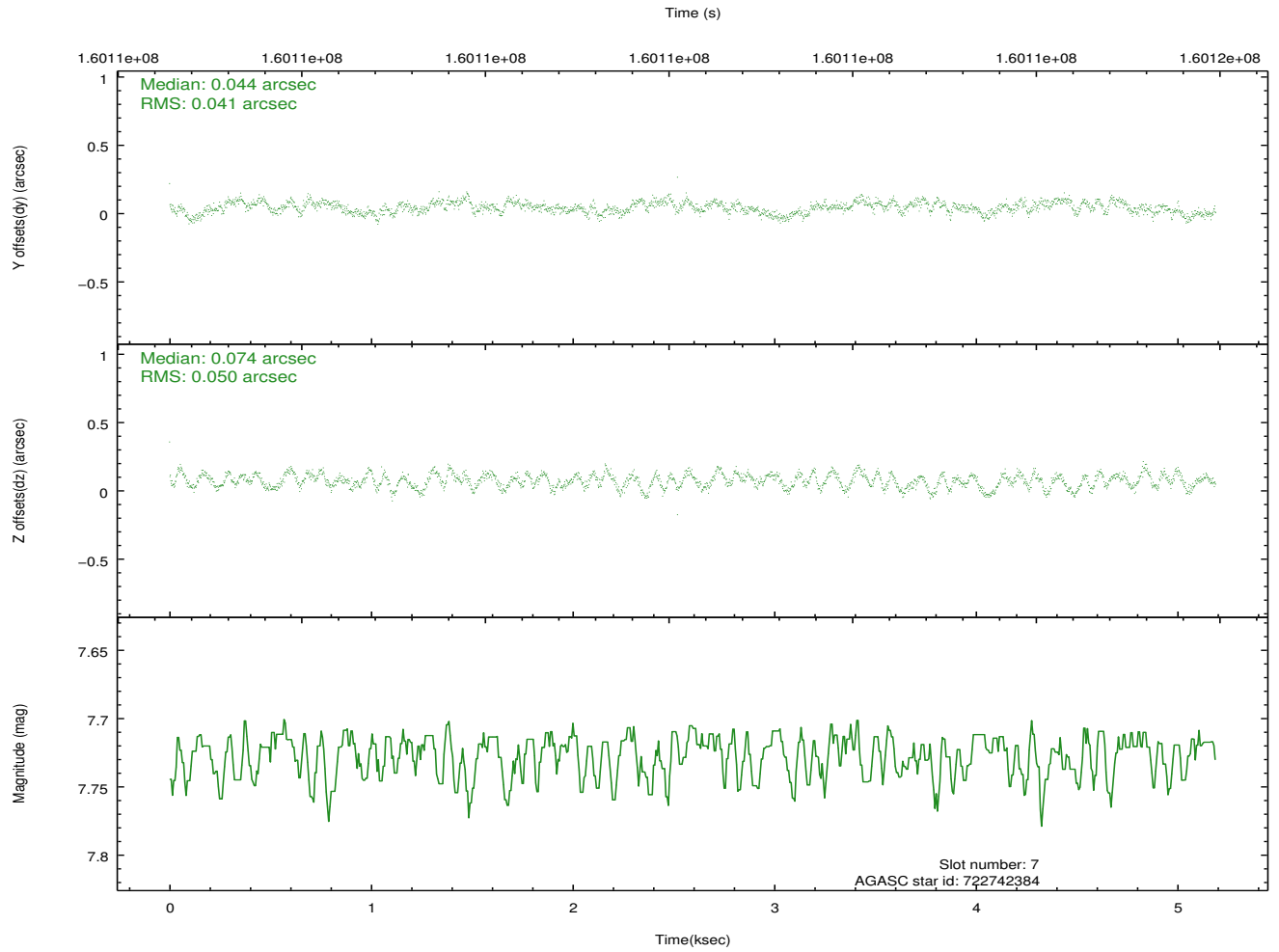
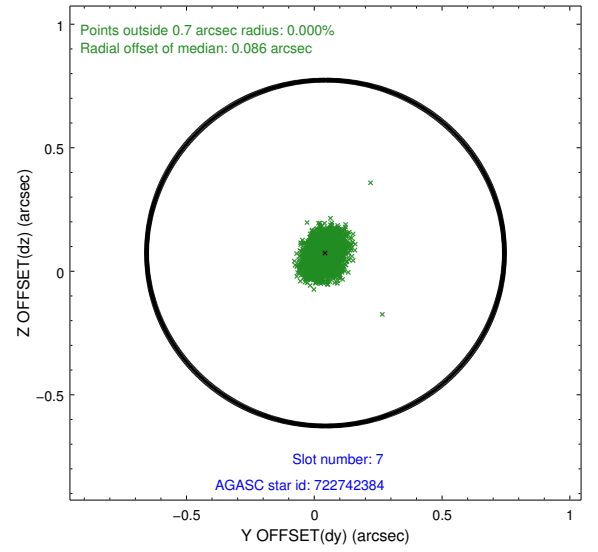
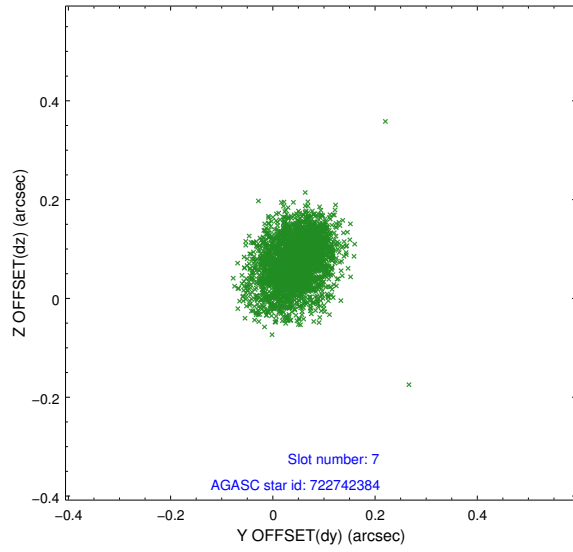
### 2.4.3 Slot 5



## 2.4.4 Slot 6

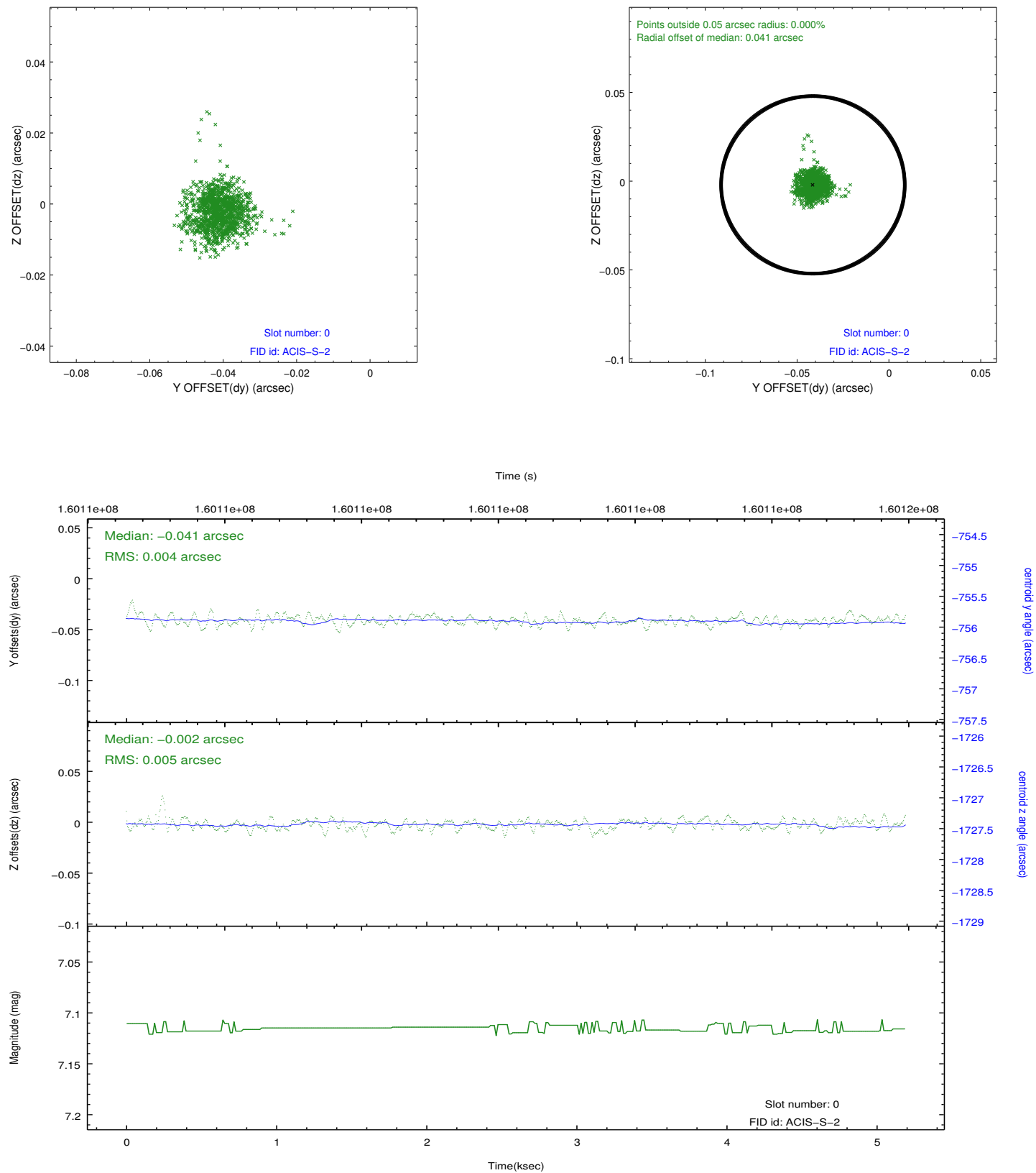


## 2.4.5 Slot 7

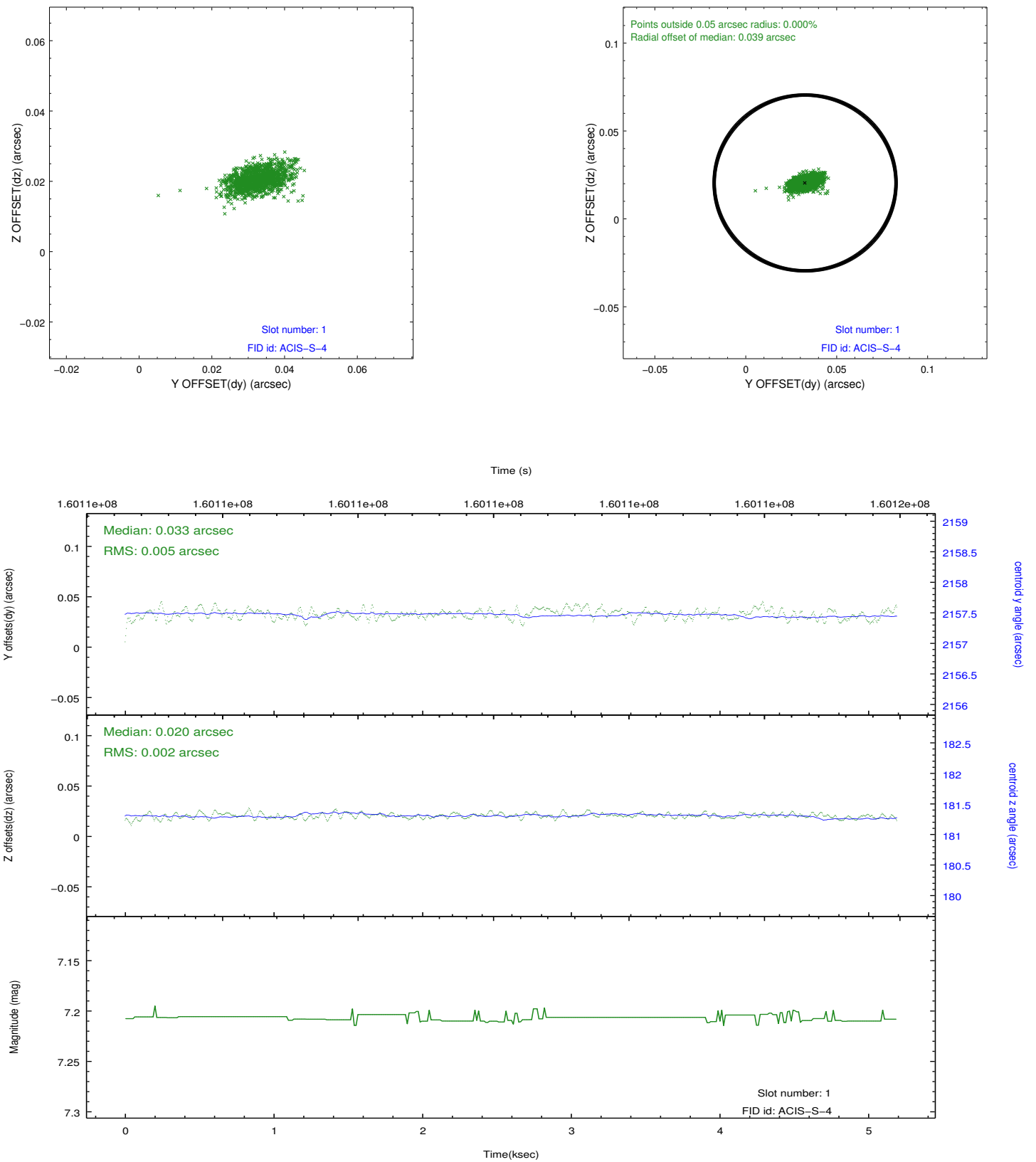


## 2.5 FID Slots

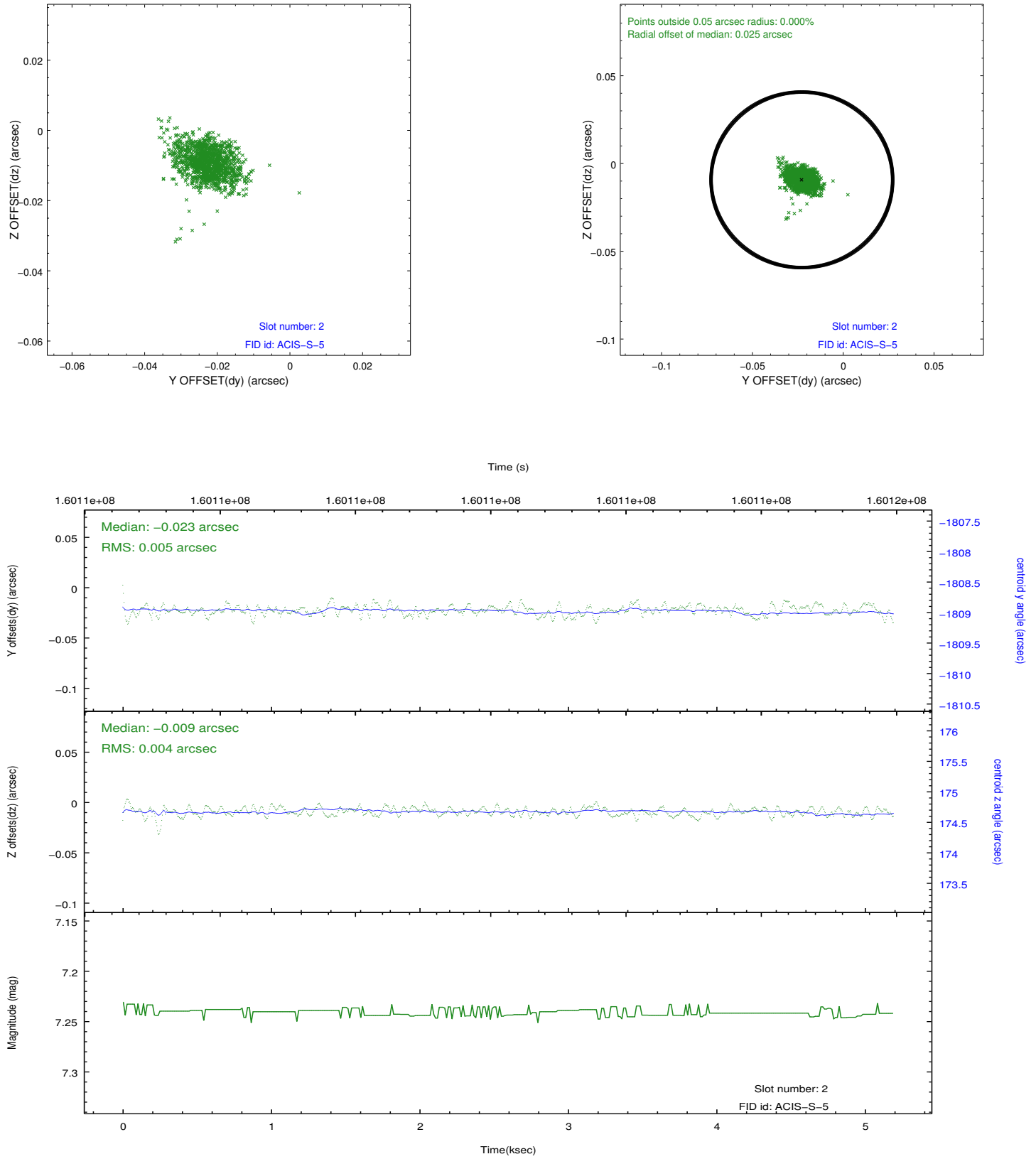
### 2.5.1 Slot 0



## 2.5.2 Slot 1



### 2.5.3 Slot 2



## A Summary

### A.1 Status

V&V Scientist	Jen Lauer
V&V Date (YYYY-MM-DD)	2012.11.01
V&V Edition	1
V&V Disposition and Status	OK
V&V Charge Time	4.758

### A.2 Comments