

V&V Reference Report

L2 ASCDS Version : 7.6.8

Observation 4010 - L2 Version 001
Chandra X-Ray Center

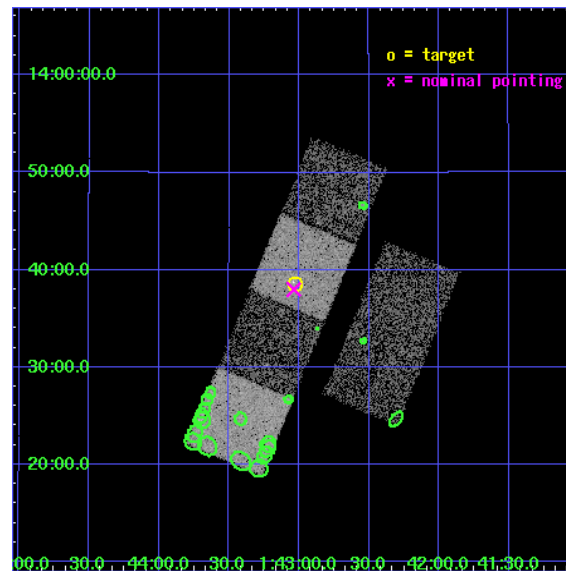
L2 Processing Date : Jul 27 2006

Contents

1	Front	2
2	OBI	3
2.1	OBI	3
2.1.1	Images	3
2.1.2	Bias	3
2.1.3	Parameters	4
2.1.4	Events	4
2.2	Compared Parameters	5
2.3	Aspect	6
2.4	Star Slots	9
2.4.1	Slot 3	9
2.4.2	Slot 4	10
2.4.3	Slot 5	11
2.4.4	Slot 6	12
2.4.5	Slot 7	13
2.5	FID Slots	14
2.5.1	Slot 0	14
2.5.2	Slot 1	15
2.5.3	Slot 2	16
3	Point Sources	17
A	Summary	18
A.1	Status	18
A.2	Comments	18

1 Front

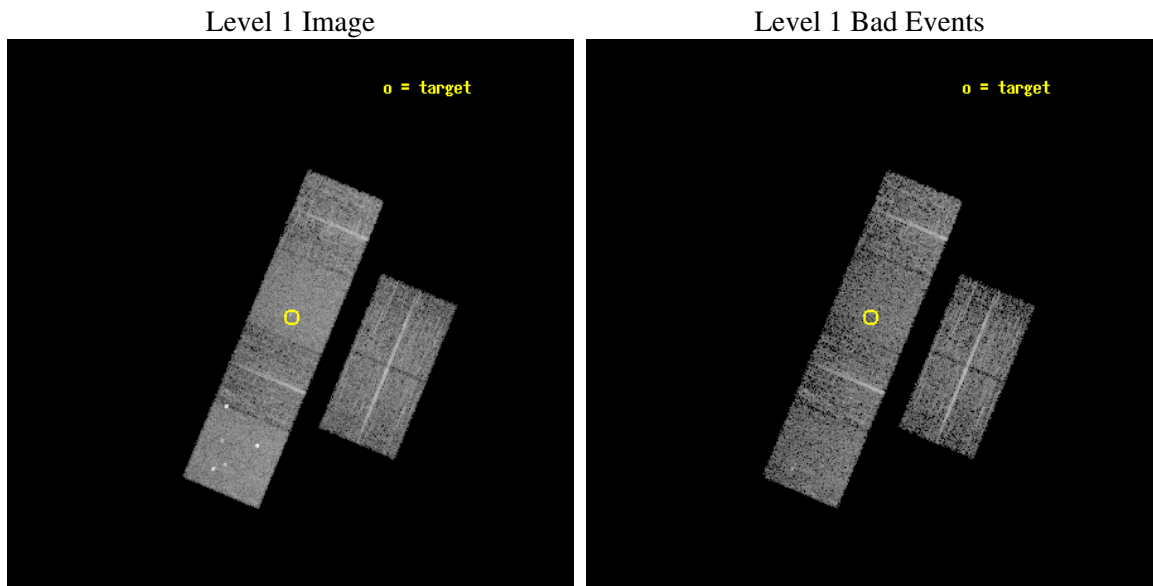
seq_num	700689
obs_id	4010
title	A CHANDRA SURVEY OF INFRARED-BRIGHT LINER GALAXIES
observer	Dr. Shobita Satyapal
object	NGC 660
dtcycle	0
cycle	P
ra_targ	25.757083
dec_targ	13.642778
ra_nom	25.759181390267
dec_nom	13.633291553225
roll_nom	292.50657281401
revision	2
ontime	5129.5999808908
livetime	5064.6458972584
ontime2	5129.5999808908
ontime3	5129.5999808908
ontime5	5129.5999808908
ontime6	5129.5999808908
ontime7	5129.5999808908
ontime8	5129.5999808908
l2events	50262



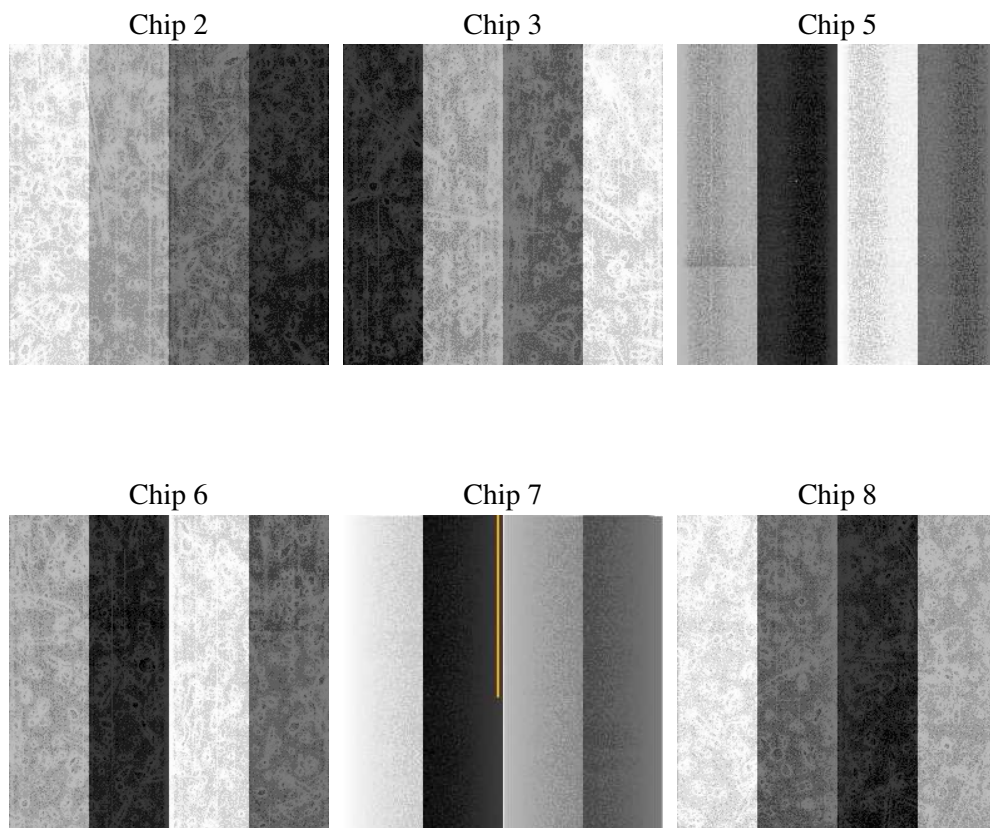
2 OBI

2.1 OBI

2.1.1 Images



2.1.2 Bias



2.1.3 Parameters

obi_num	0
ascdsver	7.6.8
caldbver	3.2.2
date	2006-07-27T14:27:23
revision	2

sched_exp_time	4950.000000
ontime	5286.0690021217
ontime2	5286.0690021217
ontime3	5286.0689822435
ontime5	5286.0690021217
ontime6	5286.0690021217
ontime7	5286.0690021217
ontime8	5286.0690021217
l1events	245151

2.1.4 Events

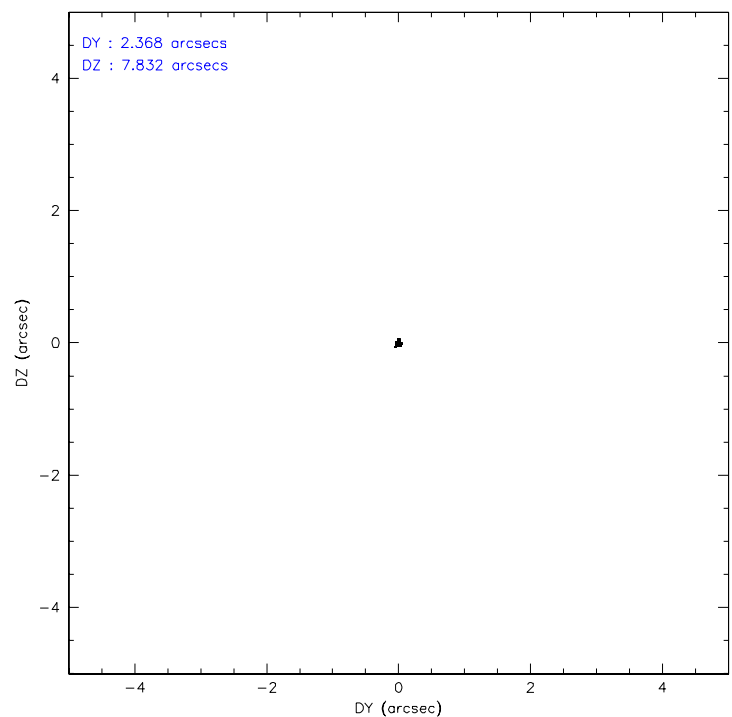
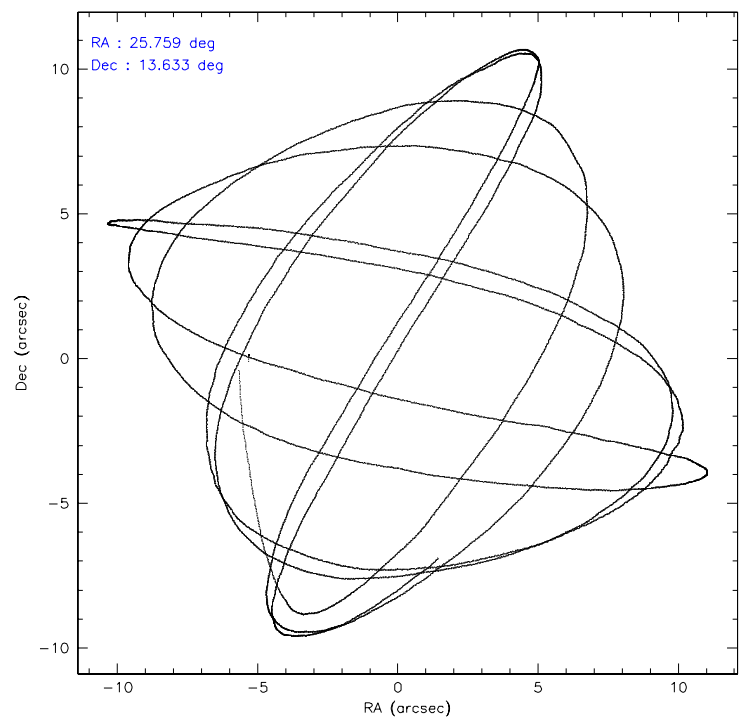
	ccd 2	ccd 3	ccd 5	ccd 6	ccd 7	ccd 8
level 1 events	34714	34069	52654	34711	45967	43036
rejected events	30697	30345	28977	30903	29014	34728
rejected %	88%	89%	55%	89%	63%	80%

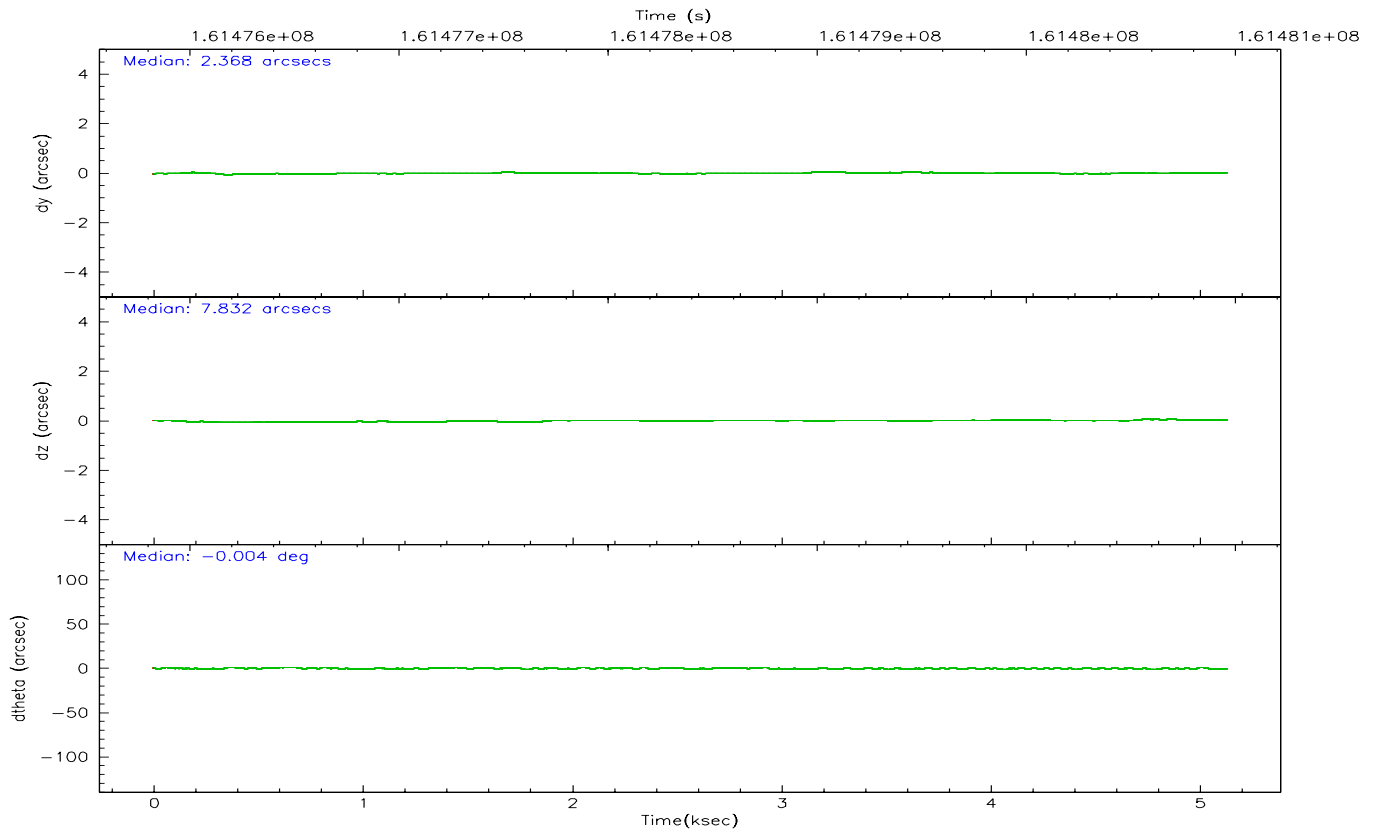
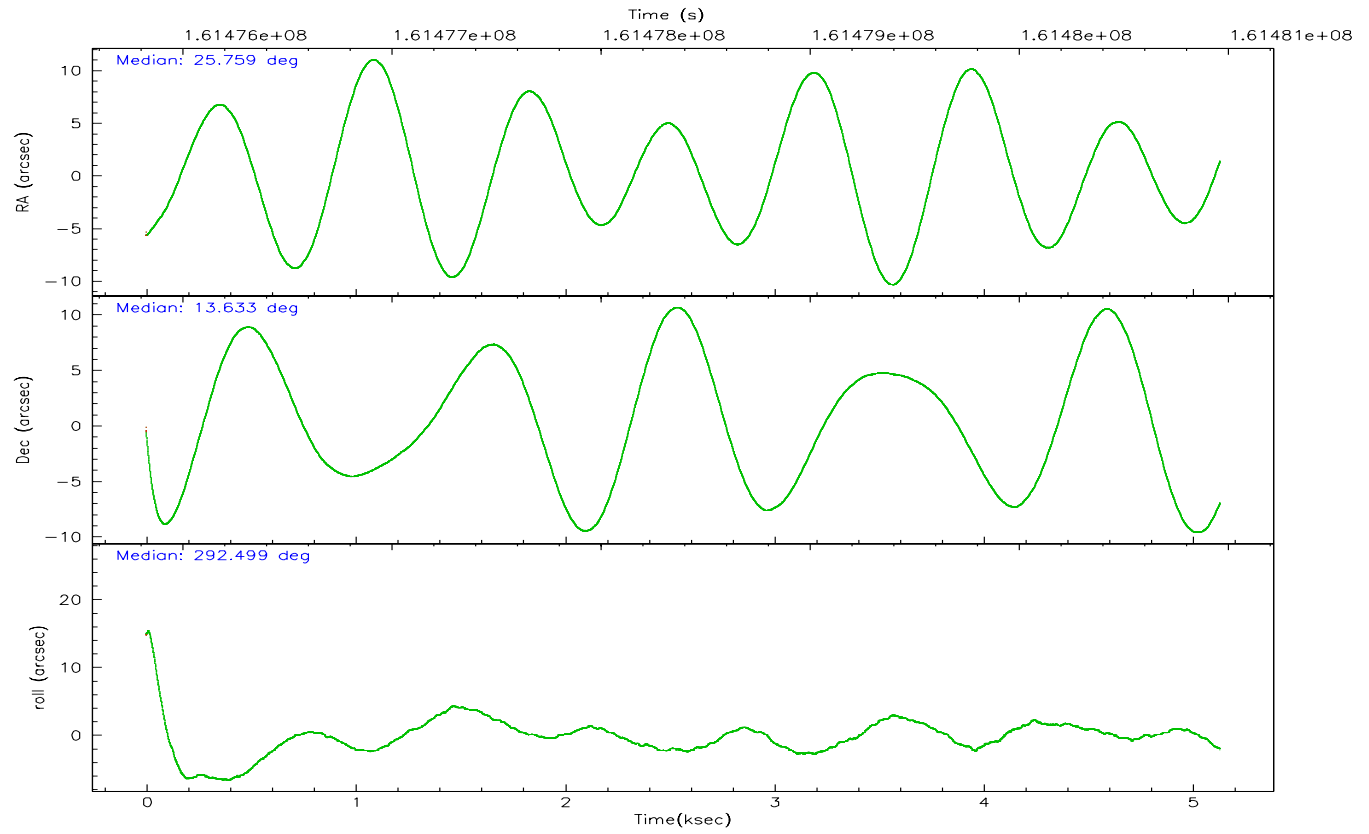
	ccd 2	ccd 3	ccd 5	ccd 6	ccd 7	ccd 8
grade 0 events	1831	1643	3810	1601	1111	2716
	5%	4%	7%	4%	2%	6%
grade 1 events	21	26	51	20	26	26
	0%	0%	0%	0%	0%	0%
grade 2 events	825	737	7060	803	4368	1885
	2%	2%	13%	2%	9%	4%
grade 3 events	422	350	501	360	931	922
	1%	1%	0%	1%	2%	2%
grade 4 events	378	419	602	365	890	866
	1%	1%	1%	1%	1%	2%
grade 5 events	1359	1402	2388	1469	3092	2013
	3%	4%	4%	4%	6%	4%
grade 6 events	670	680	12437	791	10181	2205
	1%	1%	23%	2%	22%	5%
grade 7 events	29208	28812	25805	29302	25368	32403
	84%	84%	49%	84%	55%	75%

2.2 Compared Parameters

Parameter	Planned	Actual	Parameter	Planned	Actual
Instrument	ACIS	ACIS	Obspar format version number	6	6
Detector	ACIS-235678	ACIS-235678	Obspar file type	PREDICTED	ACTUAL
Grating	NONE	NONE	Obspar update status	NONE	UPDATED
Data mode	FAINT	FAINT	On-chip summing requested	N	N
Observation mode	POINTING	POINTING	Subarray requested	NONE	NONE
Pointing RA	25.736766	25.75918139026687	Alternating exposures requested	N	N
Pointing Dec	13.649614	13.63329155322496	Primary exposure time	0.000000	3.2
Pointing Roll	292.355195	292.506572814011			
SIM focus pos (mm)	-0.684267	-0.6828225247311905			
SIM defocus (mm)	0	0.001444936568705701			
SIM translation stage pos (mm)	-190.132523	-190.1400660498719			
SIM translation stage offset (mm)	0	0.00754346686406393			
Observation start time	161476003.184000	161474857.47265			
Observation start date	2003-02-12T22:25:39	2003-02-12T22:07:37			
Observation end time	161480953.184000	161481690.12293			
Observation end date	2003-02-12T23:48:09	2003-02-13T00:01:30			
Read mode	TIMED	TIMED			

2.3 Aspect



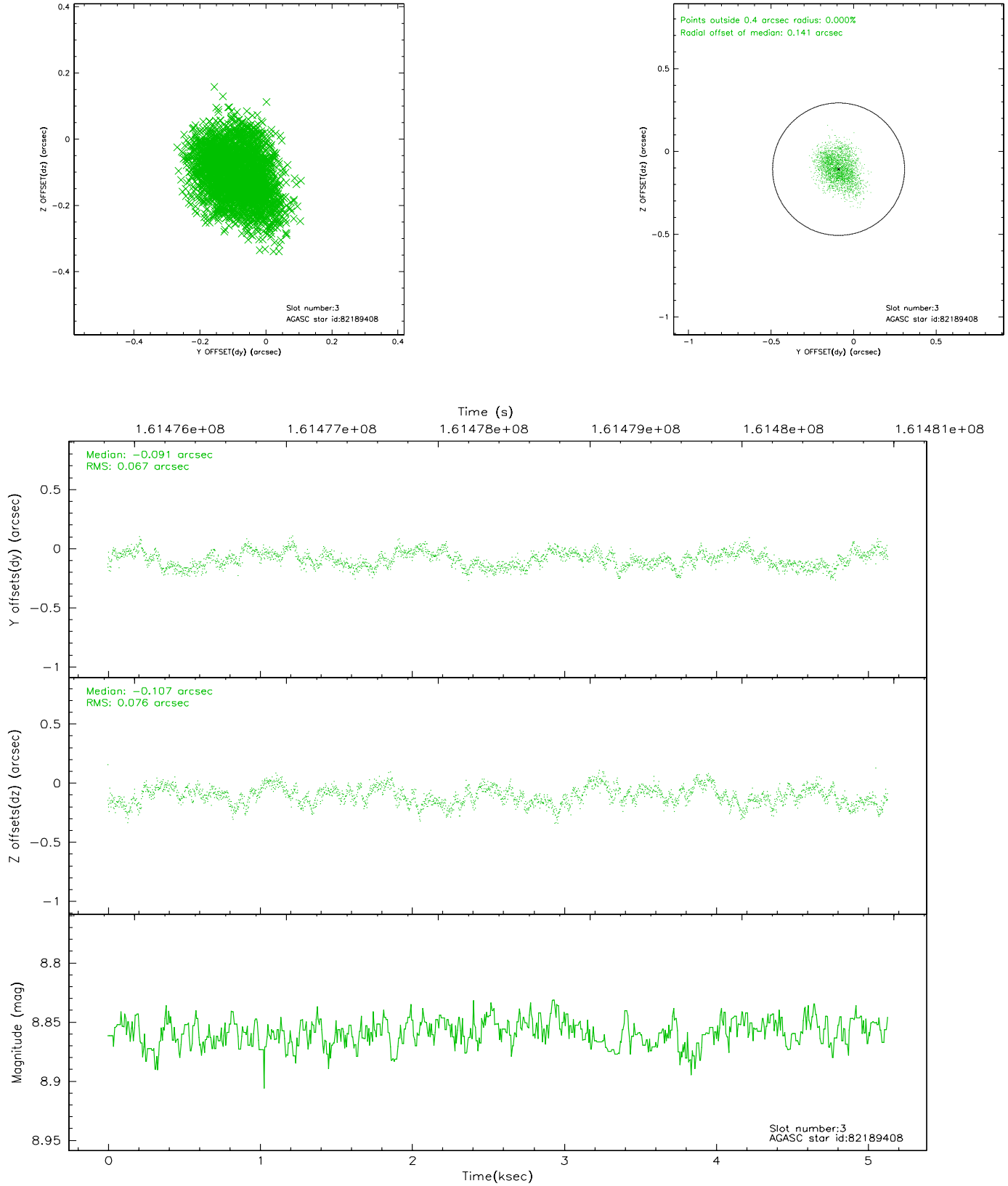


Slot Statistics

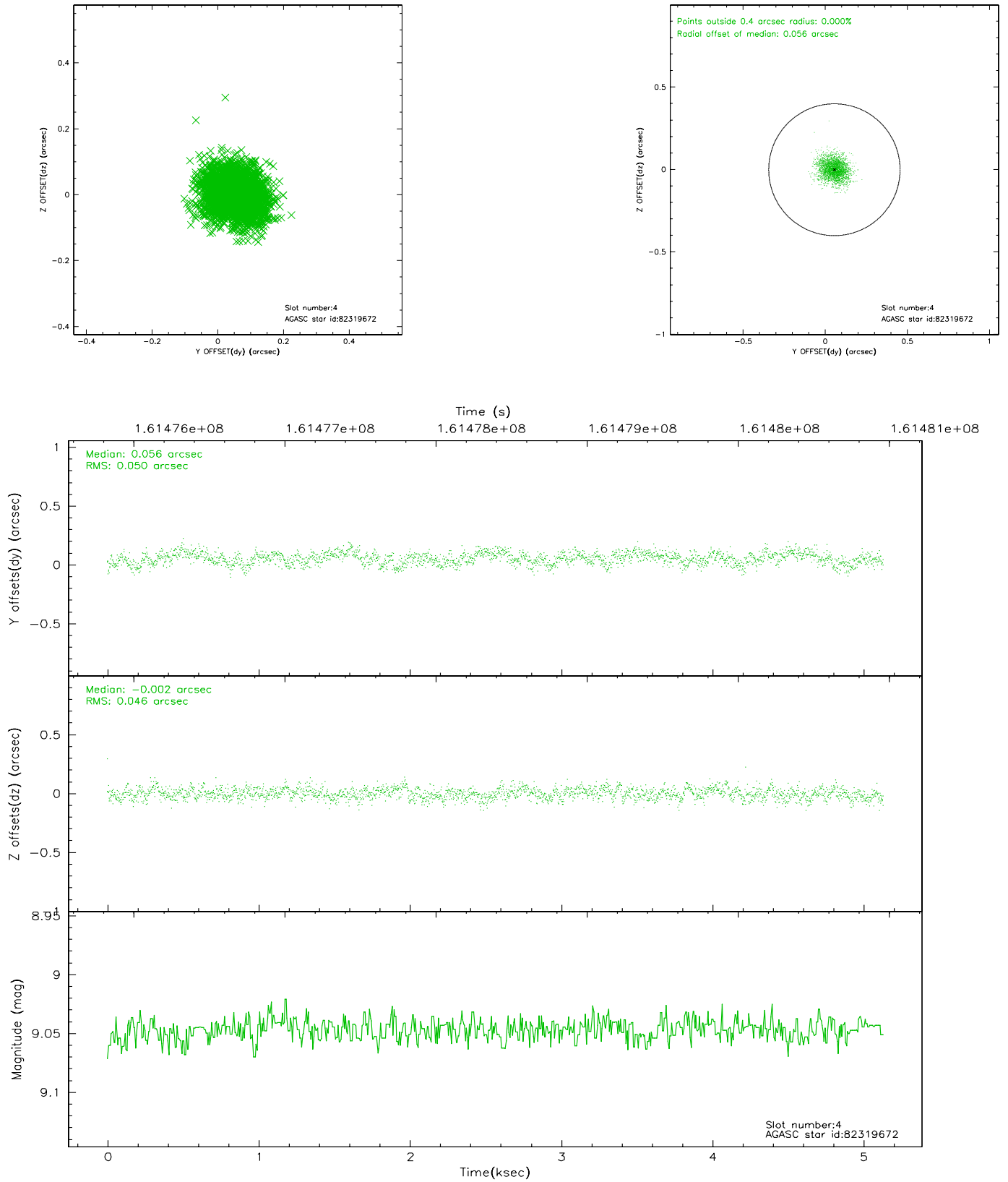
slot	status	id	mag	n_pts	med_dy	med_dz	dr1	dr2	ra	dec	mean_y	mean_z
0	FID	ACIS-S-2	7.11	1253	-0.005	0.021	0.007	0.012	0.000000	0.000000	-755.01	-1728.99
1	FID	ACIS-S-4	7.20	1252	-0.078	-0.003	0.005	0.010	0.000000	0.000000	2157.67	178.23
2	FID	ACIS-S-5	7.23	1253	0.052	-0.009	0.007	0.011	0.000000	0.000000	-1806.26	173.27
3	GUIDE	82189408	8.86	2505	-0.091	-0.107	0.108	0.170	25.276758	13.237916	756.47	-2053.55
4	GUIDE	82319672	9.05	2506	0.056	-0.002	0.072	0.115	25.615508	13.734038	-441.87	-276.94
5	GUIDE	82320496	8.44	2505	-0.086	0.036	0.069	0.107	26.104669	14.056528	-867.37	1746.00
6	GUIDE	82313504	8.75	2505	0.264	-0.035	0.090	0.144	25.809581	12.954660	2411.04	-713.85
7	GUIDE	82322456	9.09	2505	-0.147	0.104	0.087	0.145	25.957853	14.433526	-2316.45	1786.53

2.4 Star Slots

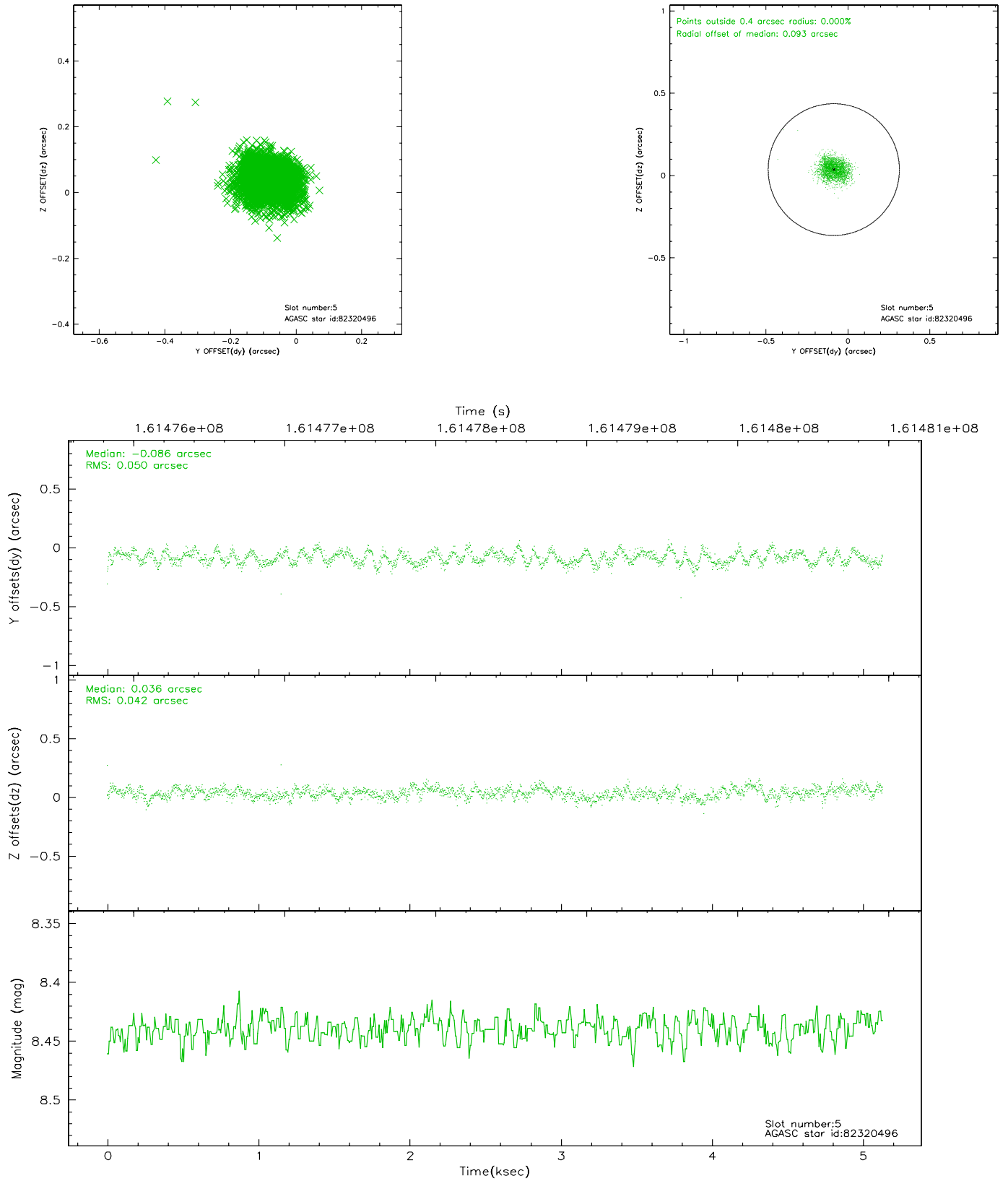
2.4.1 Slot 3



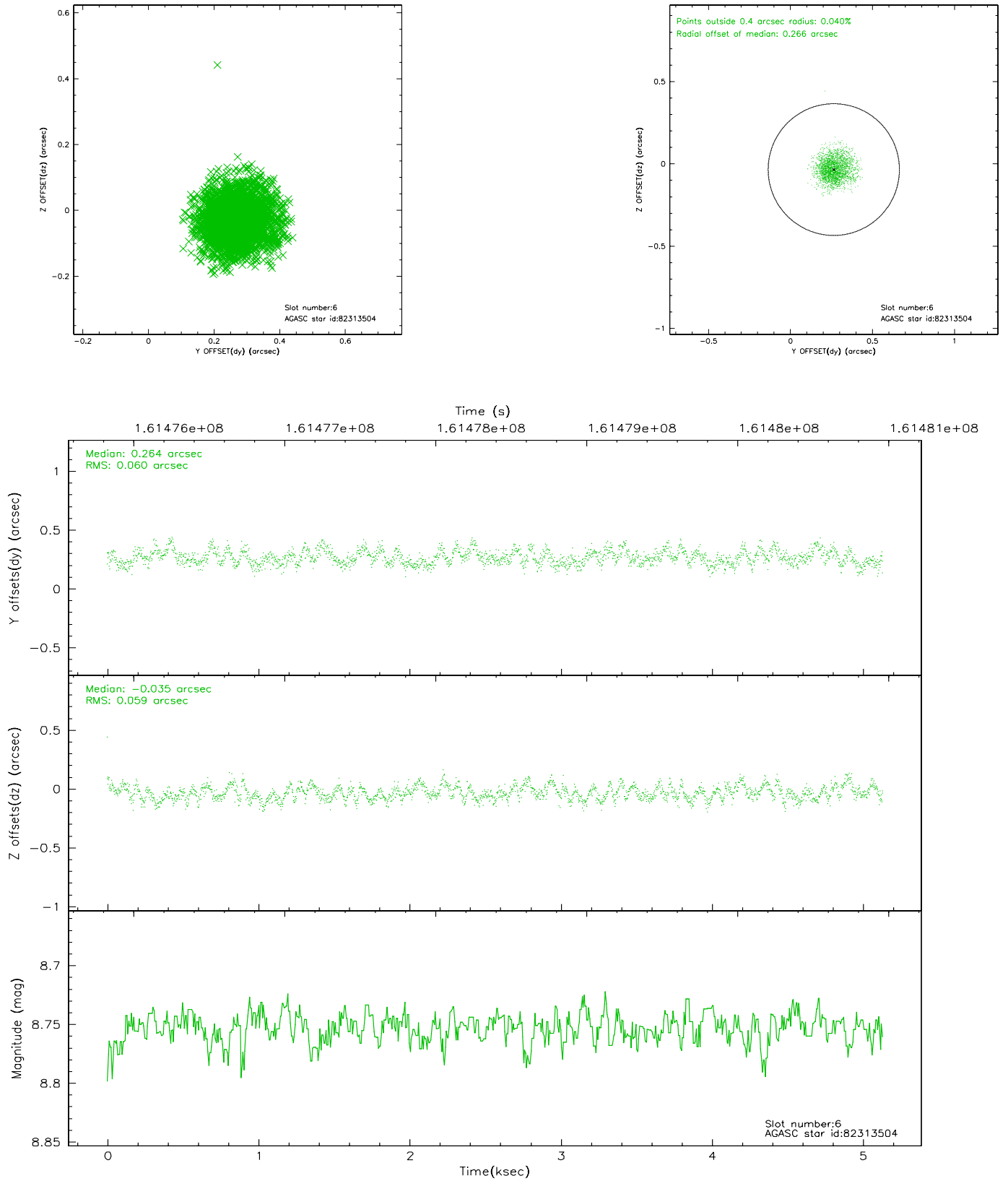
2.4.2 Slot 4



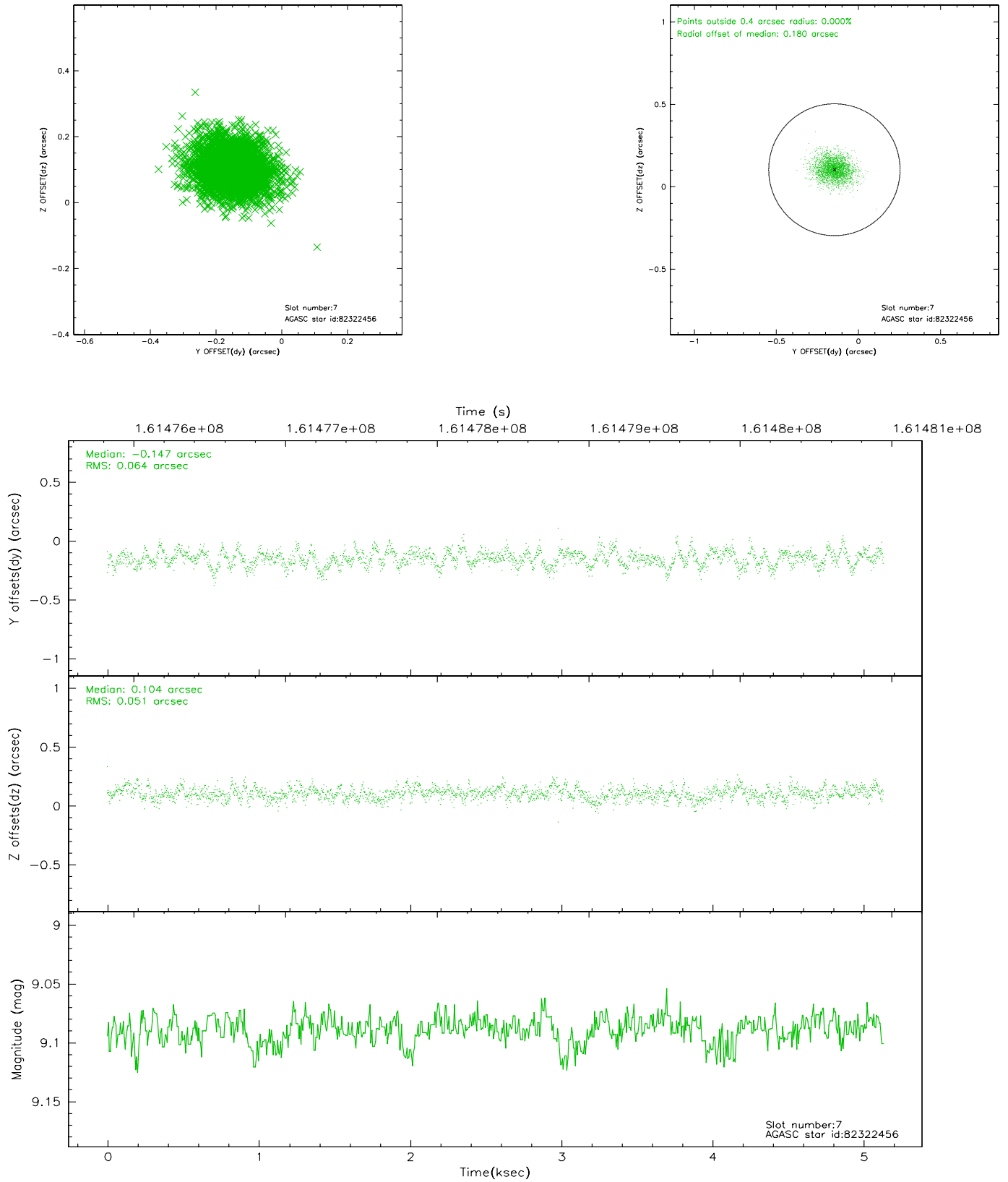
2.4.3 Slot 5



2.4.4 Slot 6

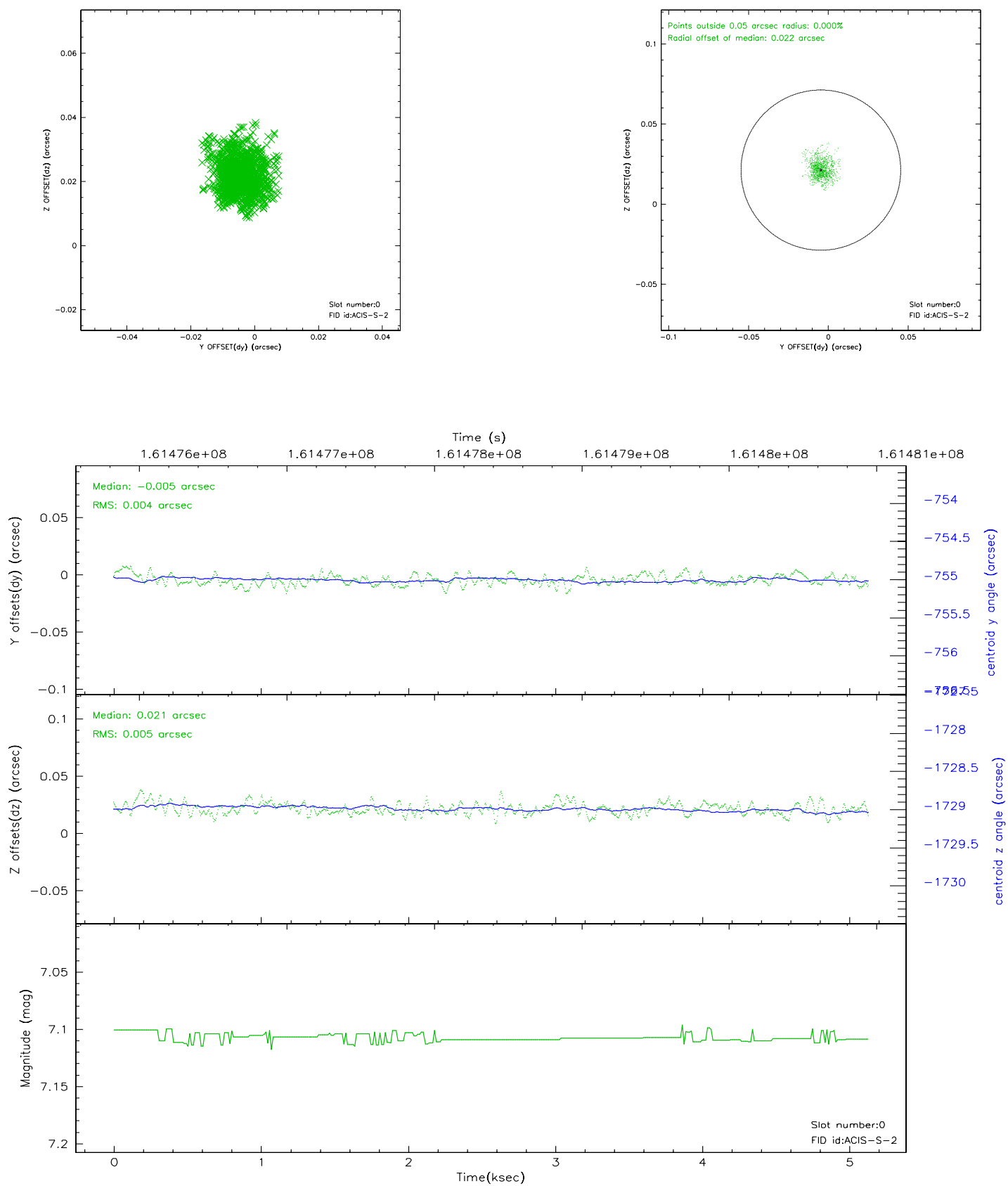


2.4.5 Slot 7

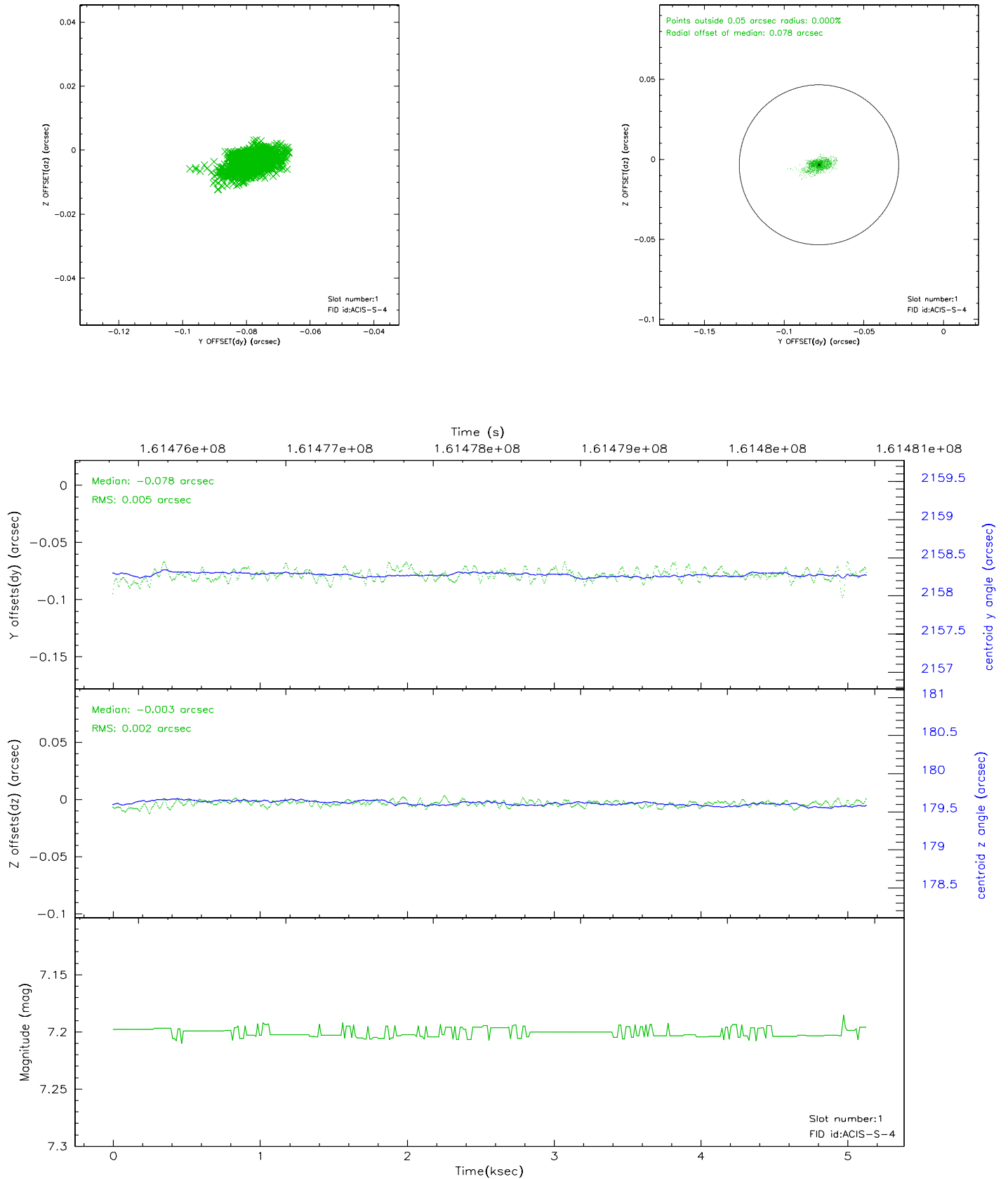


2.5 FID Slots

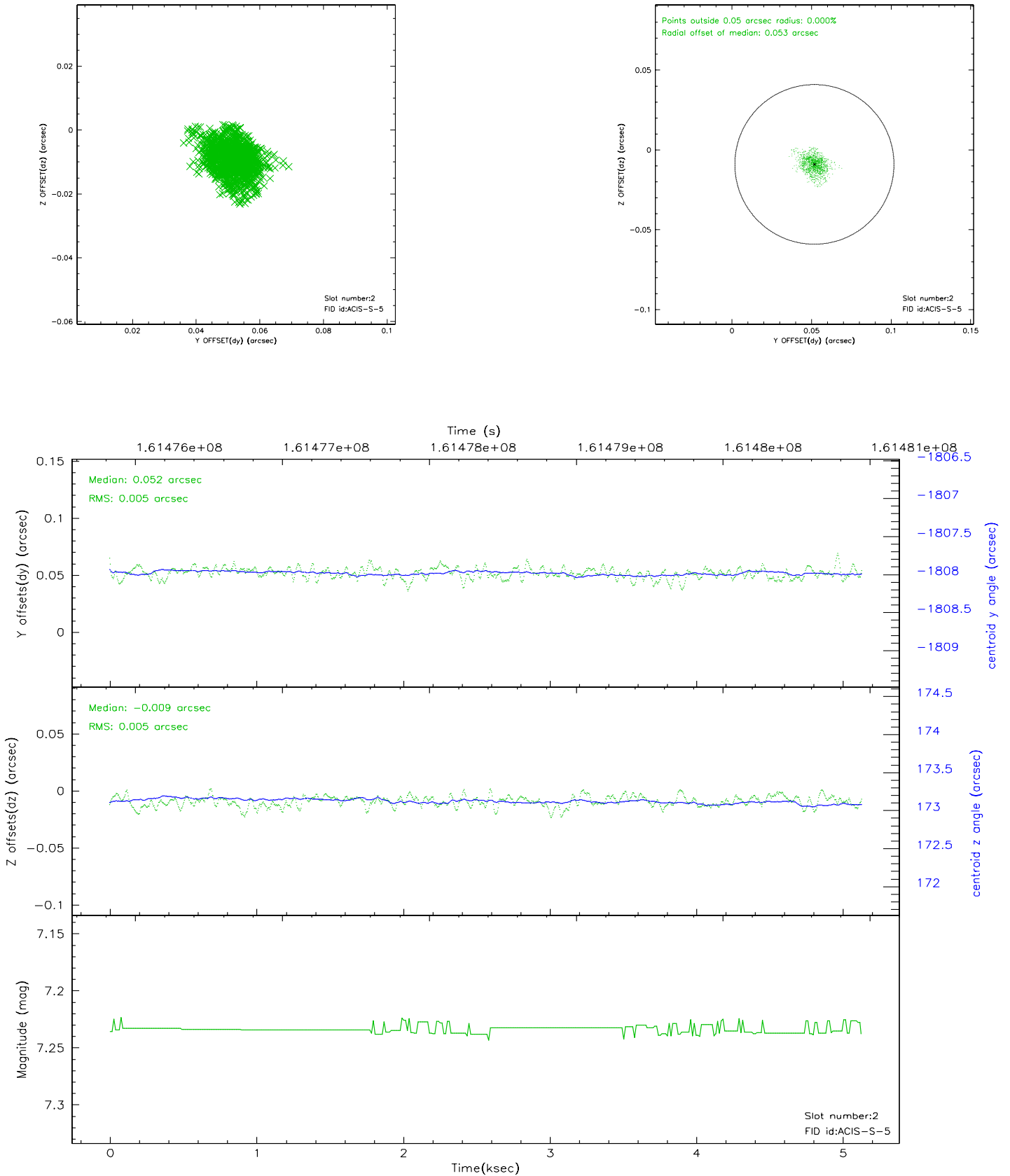
2.5.1 Slot 0



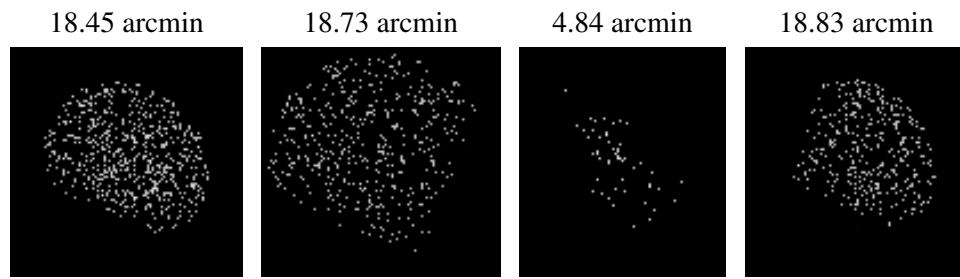
2.5.2 Slot 1



2.5.3 Slot 2



3 Point Sources



A Summary

A.1 Status

V&V Scientist	Jen Lauer
V&V Date (YYYY-MM-DD)	2006.07.27
V&V Edition	1
V&V Disposition and Status	OK
V&V Charge Time	5.129

A.2 Comments