

V&V Reference Report

L2 ASCDS Version : 7.6.8.1

Observation 3980 - L2 Version 001
Chandra X-Ray Center

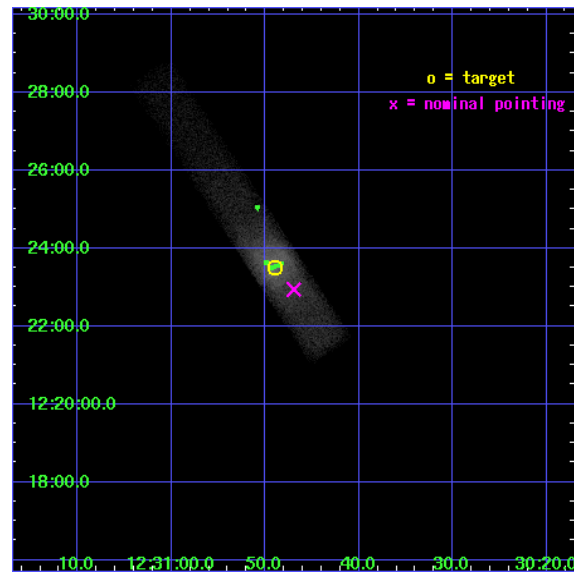
L2 Processing Date : Aug 12 2006

Contents

1	Front	2
2	OBI	3
2.1	OBI	3
2.1.1	Images	3
2.1.2	Bias	3
2.1.3	Parameters	4
2.1.4	Events	4
2.2	Compared Parameters	5
2.3	Aspect	6
2.4	Star Slots	9
2.4.1	Slot 3	9
2.4.2	Slot 4	10
2.4.3	Slot 5	11
2.4.4	Slot 6	12
2.4.5	Slot 7	13
2.5	FID Slots	14
2.5.1	Slot 0	14
2.5.2	Slot 1	15
2.5.3	Slot 2	16
3	Point Sources	17
A	Summary	18
A.1	Status	18
A.2	Comments	18

1 Front

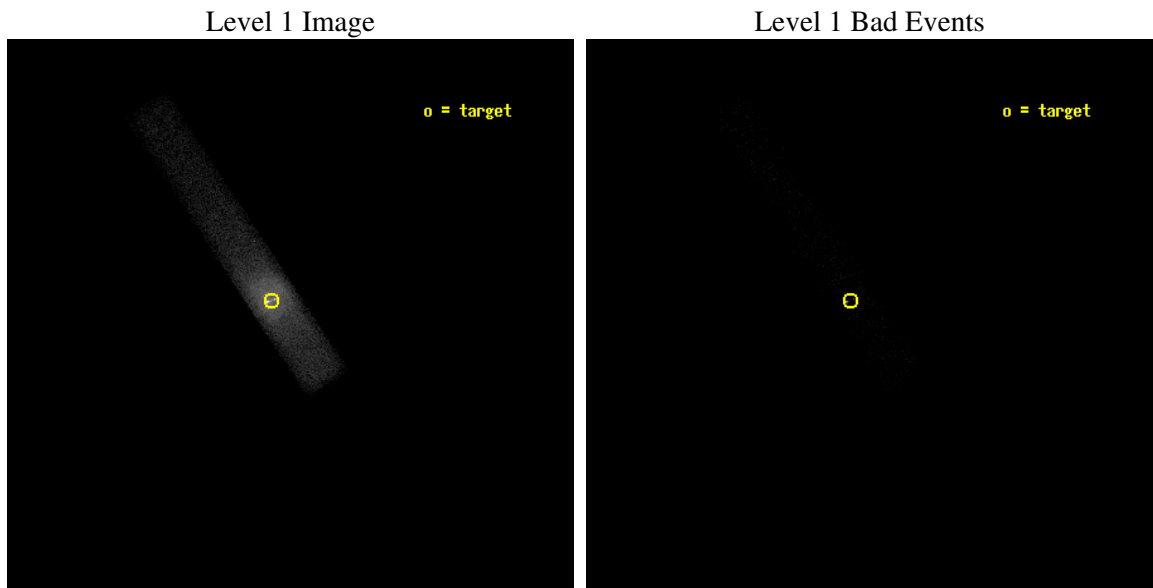
seq_num	700659
obs_id	3980
title	X-RAY VARIABILITY IN THE JET AND CORE OF M87
observer	Dr. Daniel Harris
object	M87
dtcycle	0
cycle	P
ra_targ	187.704167
dec_targ	12.391667
ra_nom	187.69569131208
dec_nom	12.382328829734
roll_nom	236.4564229368
revision	2
ontime	5280.0000786781
liveltime	4788.6813701053
ontime7	5280.0000786781
l2events	57656



2 OBI

2.1 OBI

2.1.1 Images



2.1.2 Bias

Chip 7



2.1.3 Parameters

obi_num	0
ascdsver	7.6.8.1
caldbver	3.2.3
date	2006-08-12T03:46:16
revision	2

sched_exp_time	4903.000000
ontime	5762.1322541535
ontime7	5762.1322541535
l1events	64377

2.1.4 Events

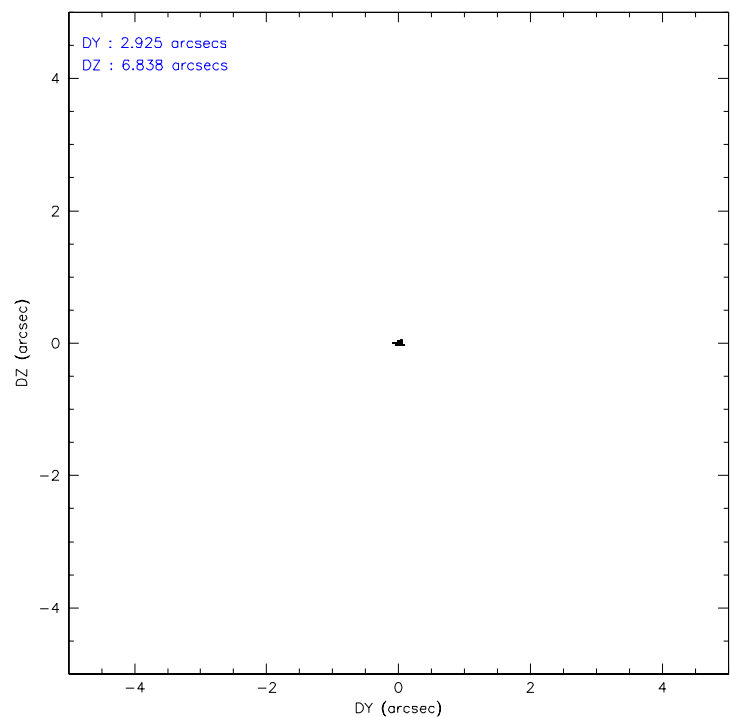
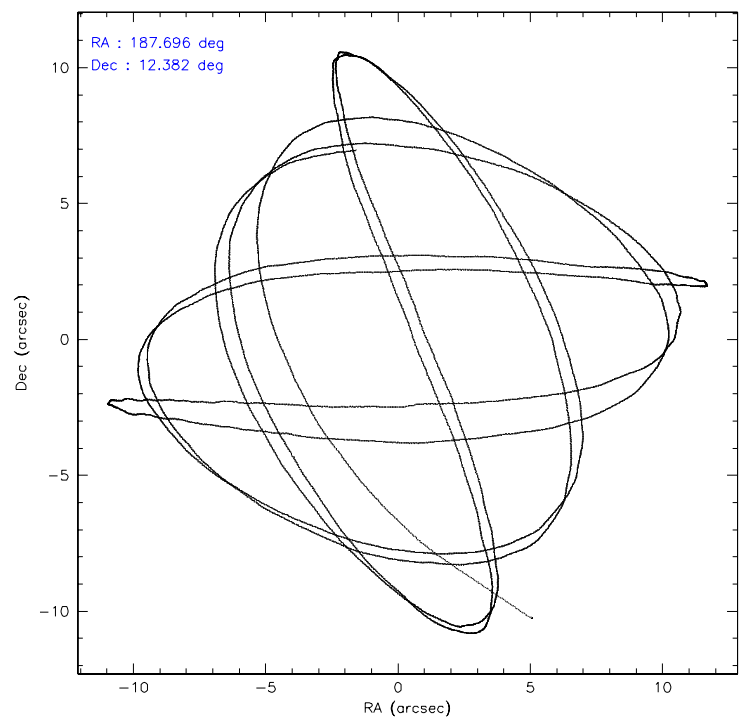
	ccd 7
level 1 events	64377
rejected events	6158
rejected %	9%

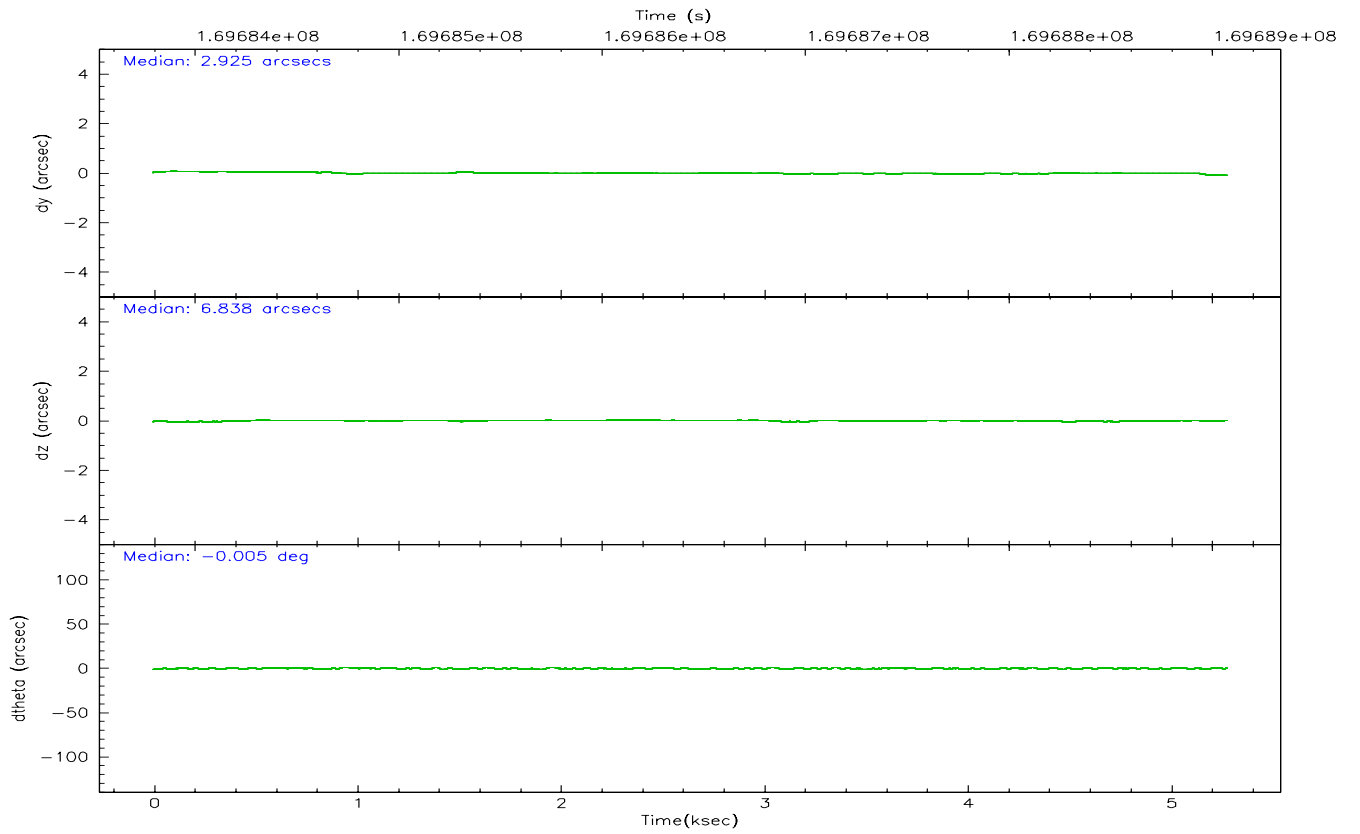
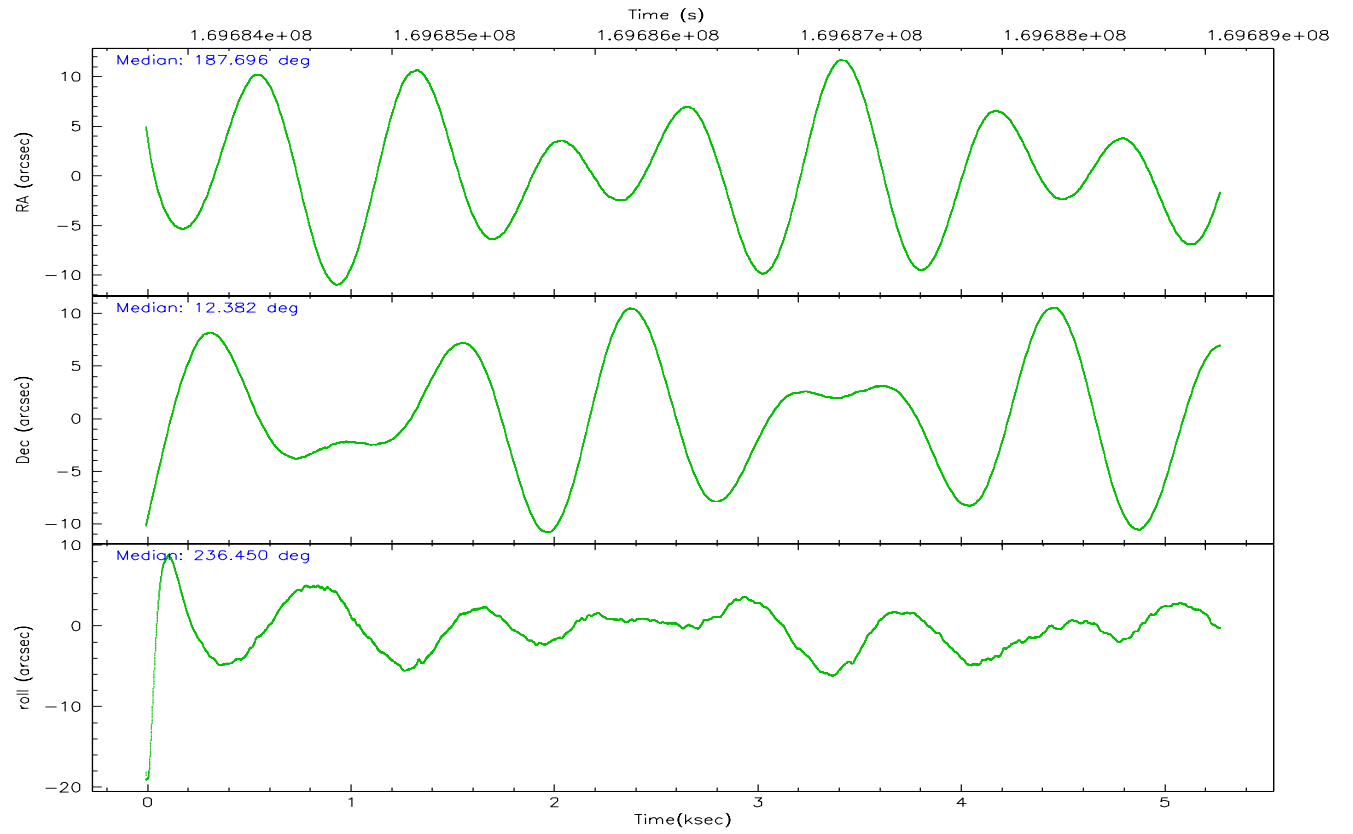
	ccd 7
grade 0 events	18662
	28%
grade 1 events	102
	0%
grade 2 events	16051
	24%
grade 3 events	6936
	10%
grade 4 events	6785
	10%
grade 5 events	953
	1%
grade 6 events	11397
	17%
grade 7 events	3491
	5%

2.2 Compared Parameters

Parameter	Planned	Actual	Parameter	Planned	Actual
Instrument	ACIS	ACIS	Obspar format version number	6	6
Detector	ACIS-7	ACIS-7	Obspar file type	PREDICTED	ACTUAL
Grating	NONE	NONE	Obspar update status	NONE	UPDATED
Data mode	FAINT	FAINT	On-chip summing requested	N	N
Observation mode	POINTING	POINTING	Subarray requested	1/8	1/8
Pointing RA	187.697073	187.6956913120782	Subarray start row	0	449
Pointing Dec	12.409510	12.38232882973395	Subarray row count	1024	128
Pointing Roll	236.299561	236.4564229368007	Alternating exposures requested	N	N
SIM focus pos (mm)	-0.684267	-0.6828225247311905	Primary exposure time	0.000000	0.4
SIM defocus (mm)	0	0.001444936568705701			
SIM translation stage pos (mm)	-190.132523	-190.1425803651734			
SIM translation stage offset (mm)	0	0.01005778216563158			
Observation start time	169684162.184000	169683103.43136			
Observation start date	2003-05-18T22:28:18	2003-05-18T22:11:43			
Observation end time	169689065.184000	169689656.25664			
Observation end date	2003-05-18T23:50:01	2003-05-19T00:00:56			
Read mode	TIMED	TIMED			

2.3 Aspect



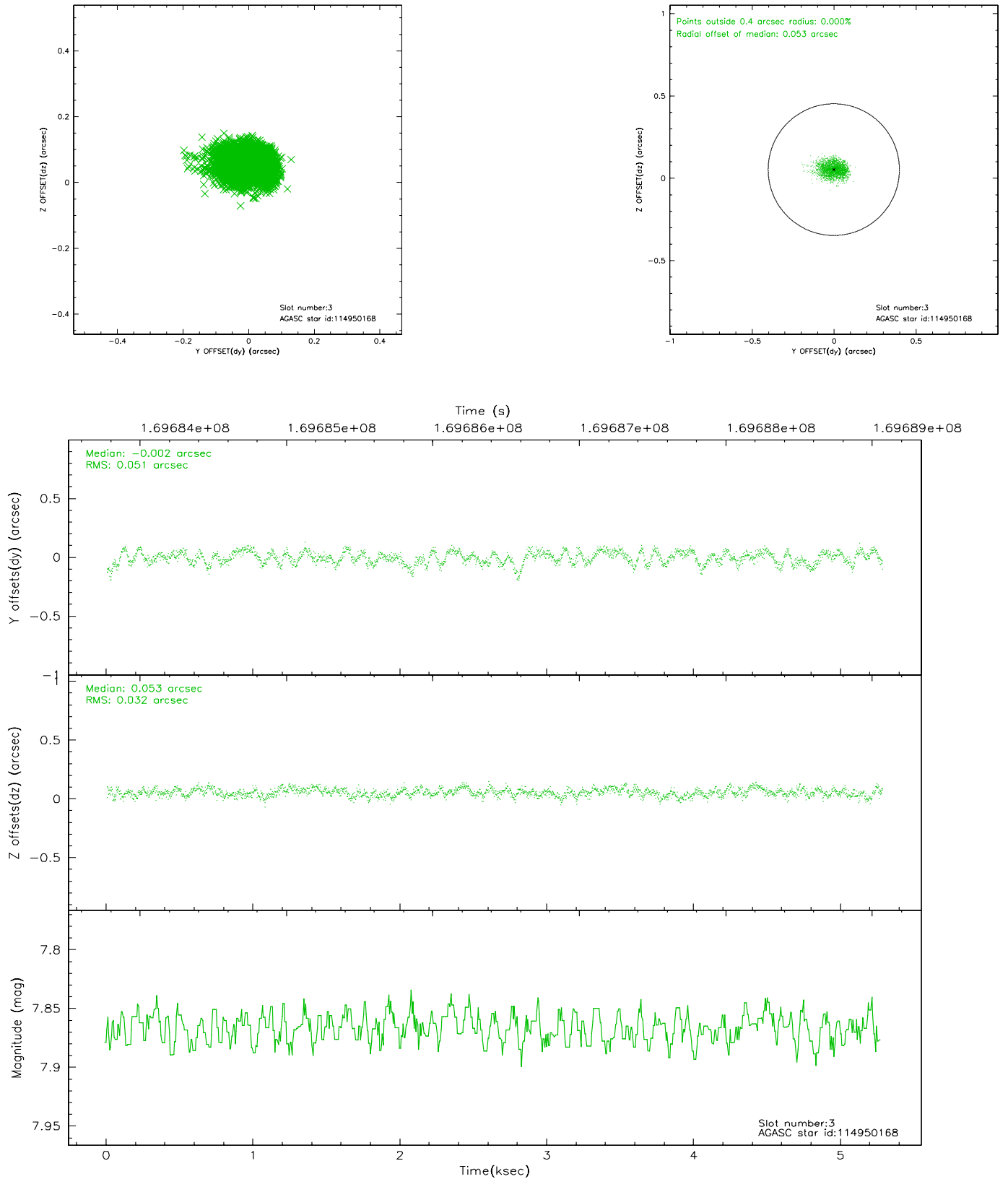


Slot Statistics

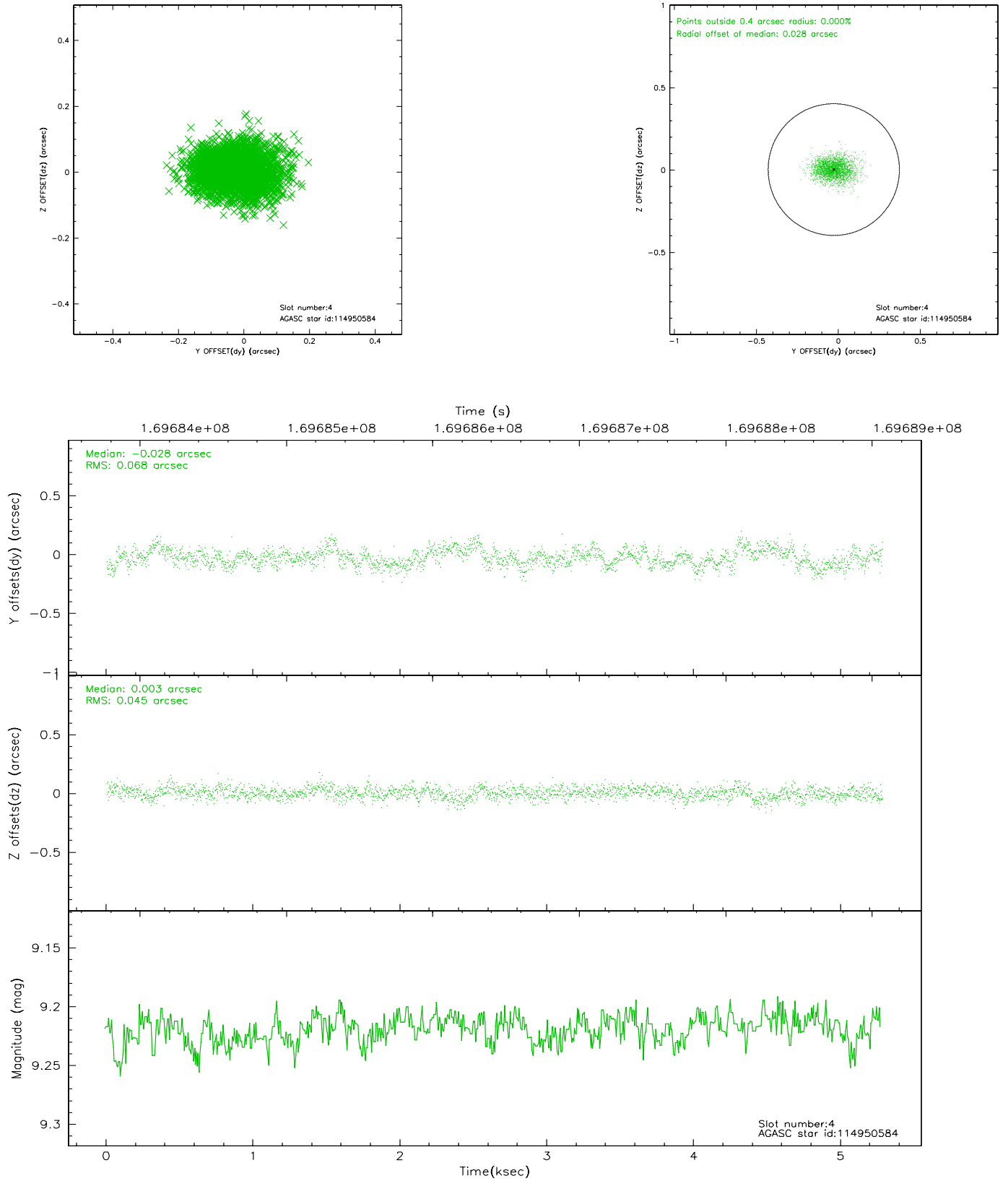
slot	status	id	mag	n_pts	med_dy	med_dz	dr1	dr2	ra	dec	mean_y	mean_z
0	FID	ACIS-S-2	7.11	1288	-0.027	0.010	0.006	0.009	0.000000	0.000000	-755.57	-1727.95
1	FID	ACIS-S-4	7.20	1288	-0.008	0.010	0.005	0.008	0.000000	0.000000	2157.18	179.39
2	FID	ACIS-S-5	7.24	1288	0.005	-0.012	0.006	0.010	0.000000	0.000000	-1806.93	174.30
3	GUIDE	114950168	7.87	2577	-0.002	0.053	0.065	0.101	187.143398	12.117441	1954.84	-1038.53
4	GUIDE	114950584	9.22	2574	-0.028	0.003	0.086	0.141	187.487323	11.827248	2154.77	548.01
5	GUIDE	114952824	8.57	2577	-0.037	0.103	0.068	0.109	187.703904	12.486727	-243.41	-133.85
6	GUIDE	114954440	9.20	2575	0.088	-0.122	0.097	0.162	186.915066	12.219118	2093.96	-1910.47
7	GUIDE	114955056	8.33	2576	-0.013	-0.035	0.060	0.097	187.914001	12.127854	420.64	1197.09

2.4 Star Slots

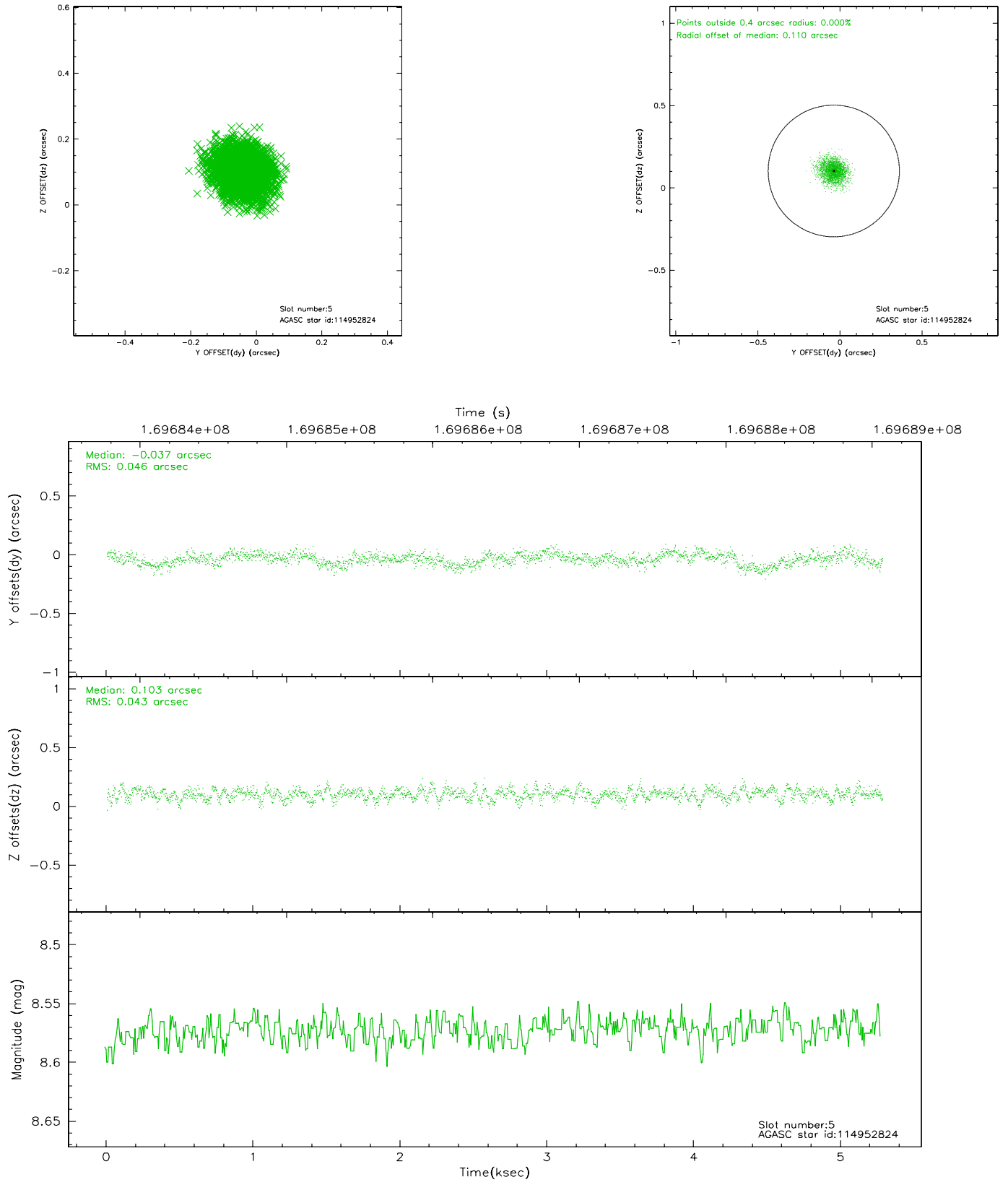
2.4.1 Slot 3



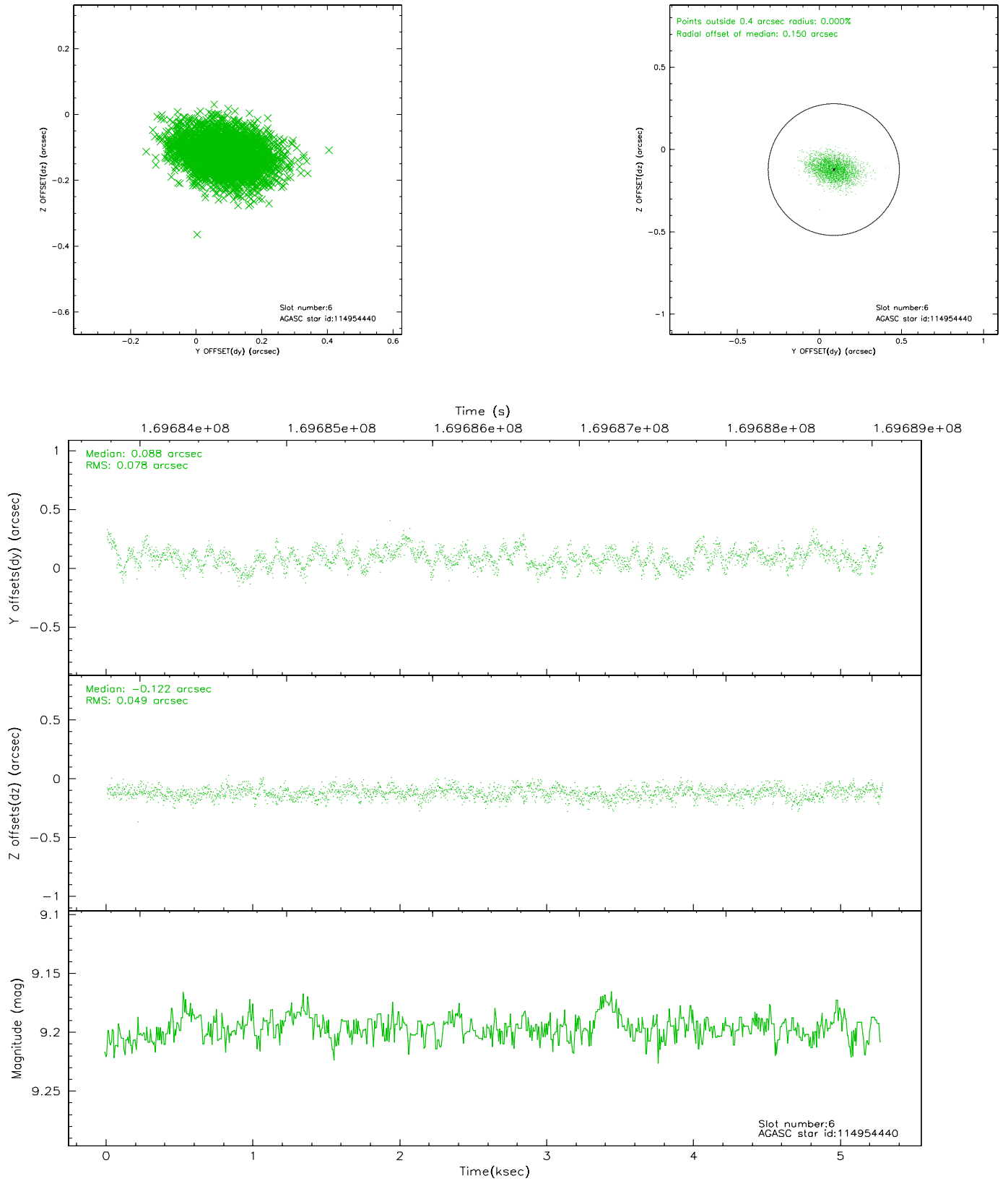
2.4.2 Slot 4



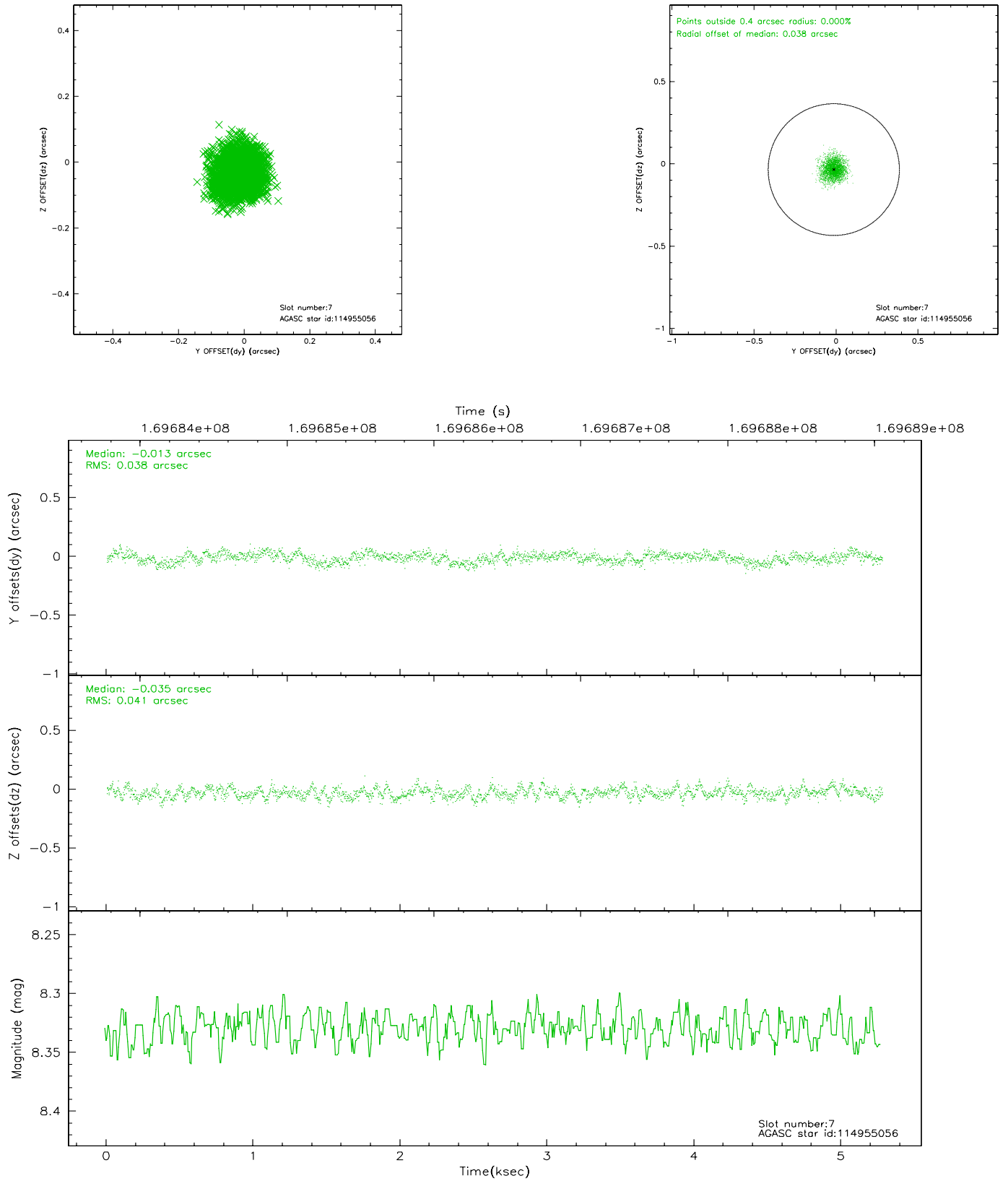
2.4.3 Slot 5



2.4.4 Slot 6

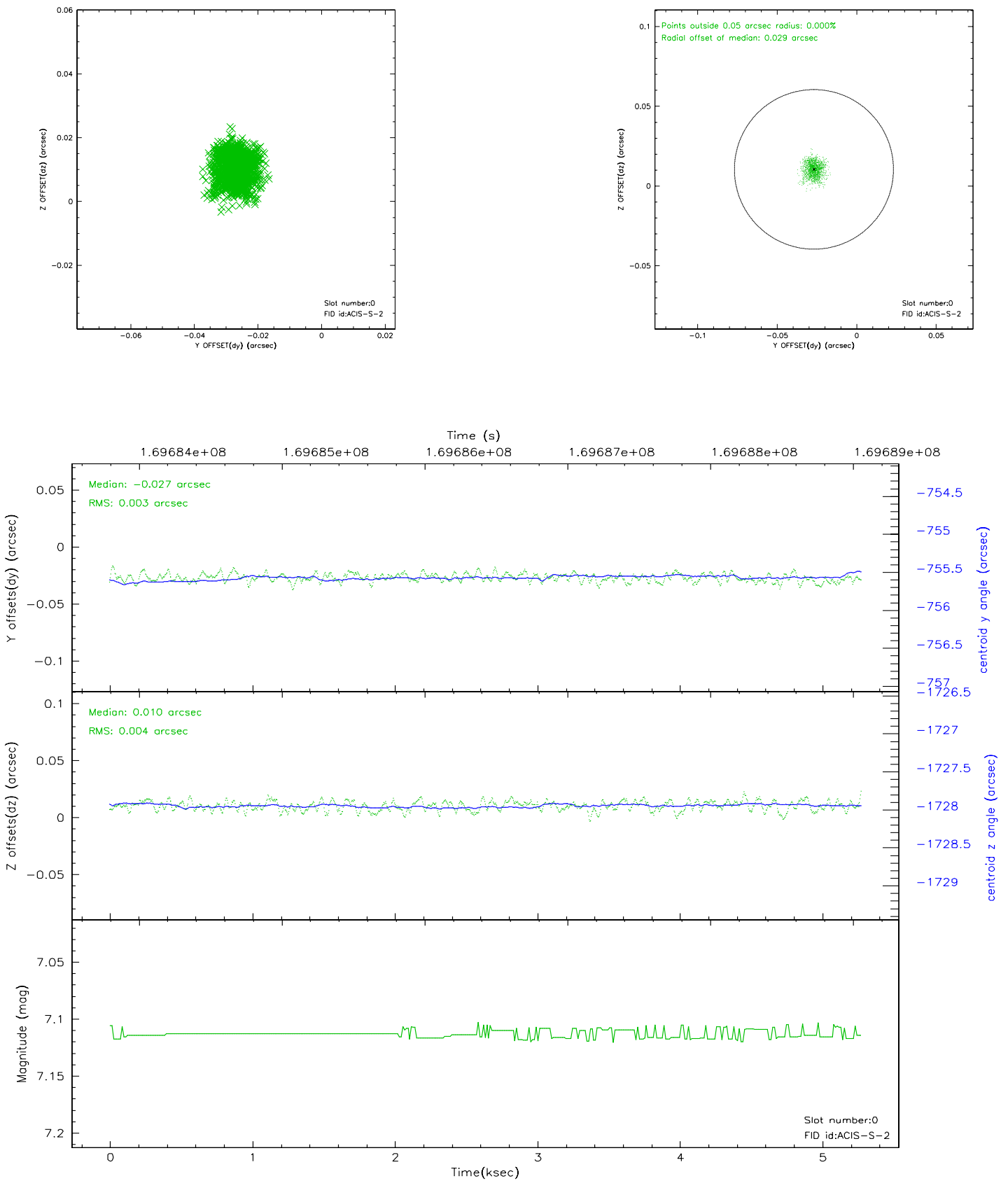


2.4.5 Slot 7

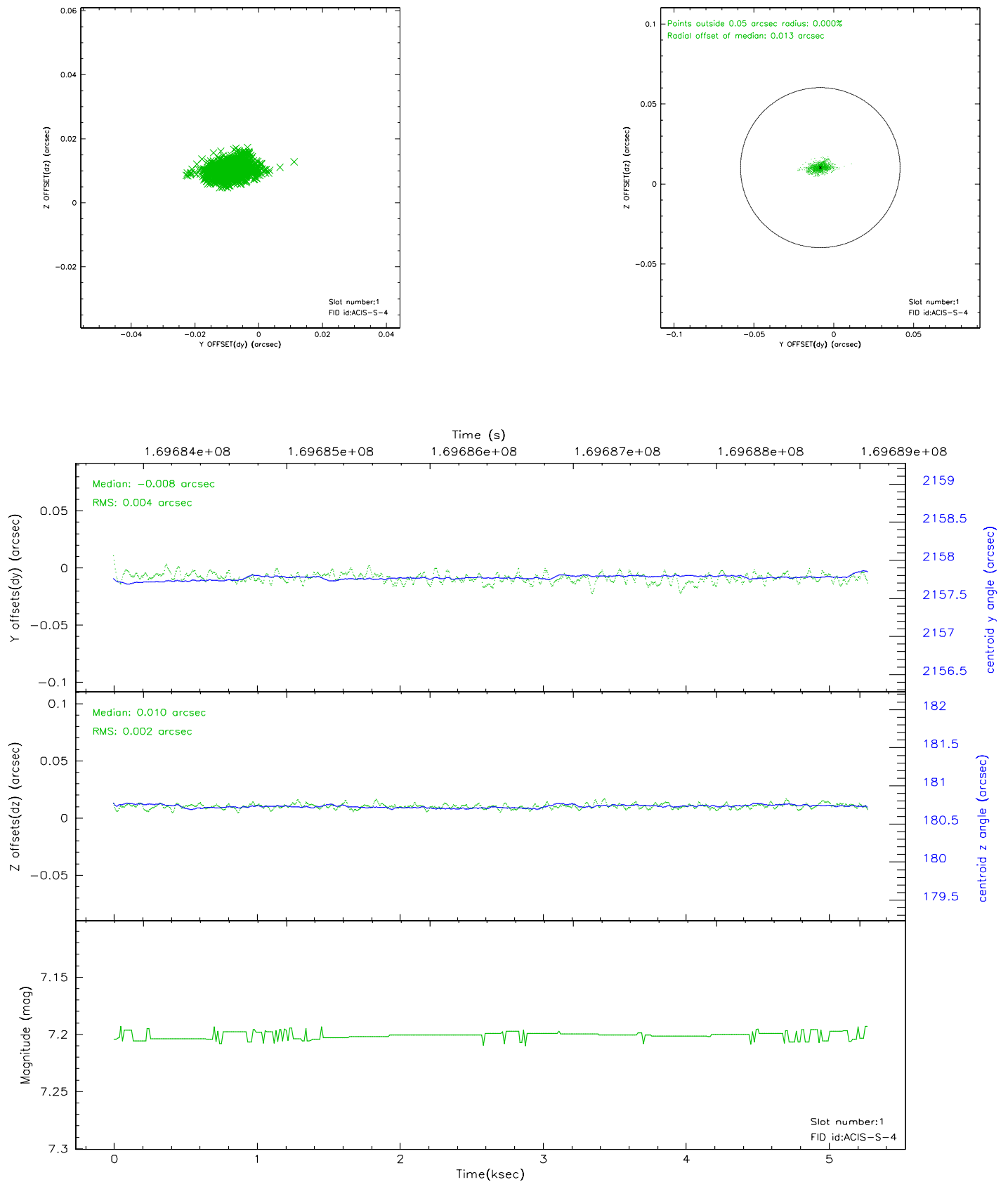


2.5 FID Slots

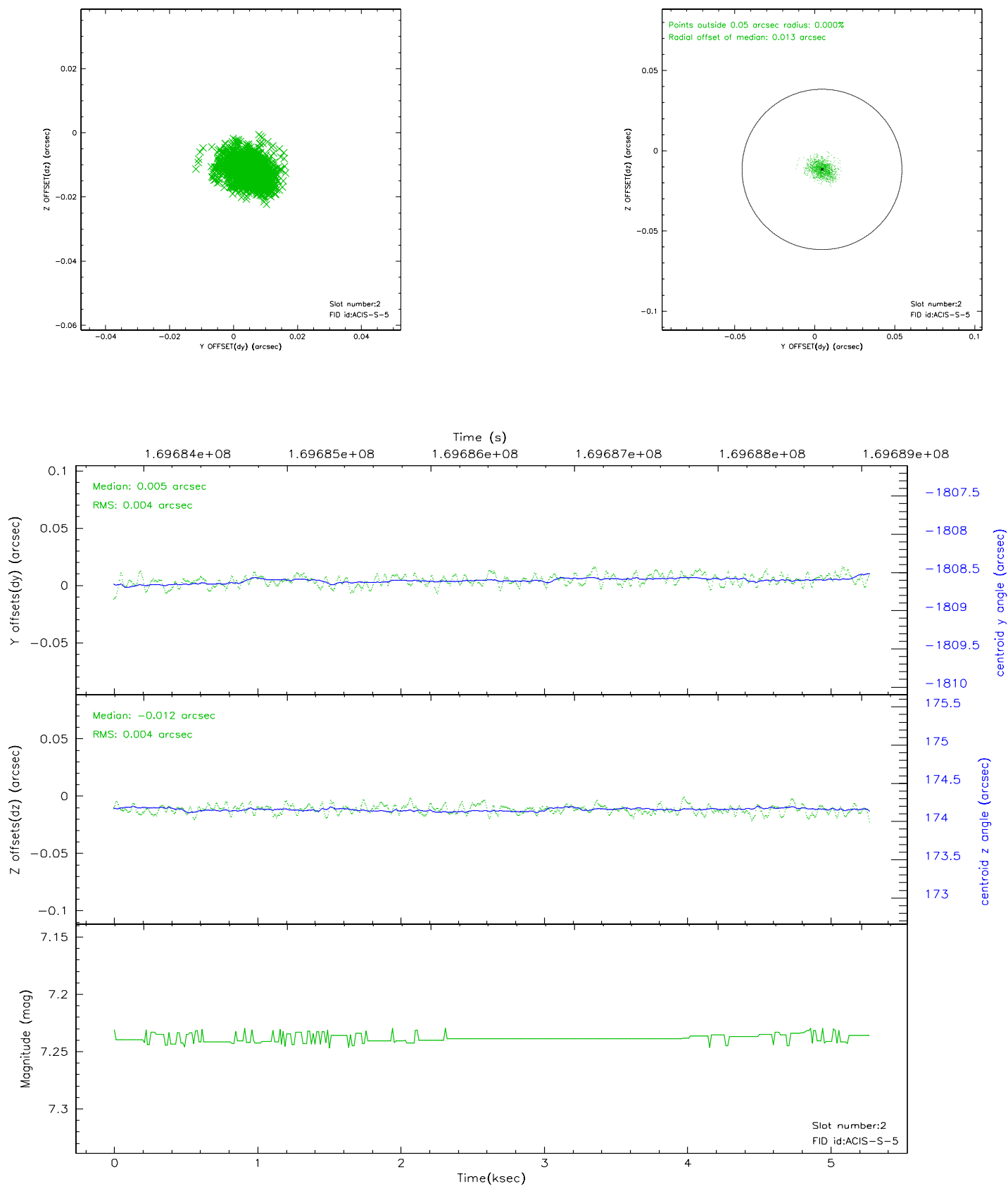
2.5.1 Slot 0



2.5.2 Slot 1



2.5.3 Slot 2



3 Point Sources

A Summary

A.1 Status

V&V Scientist	Jen Lauer
V&V Date (YYYY-MM-DD)	2006.08.13
V&V Edition	1
V&V Disposition and Status	OK
V&V Charge Time	5.28

A.2 Comments

Monitor constraint met.