

V&V Reference Report

L2 ASCDS Version : 7.6.9

Observation 3960 - L2 Version 001
Chandra X-Ray Center

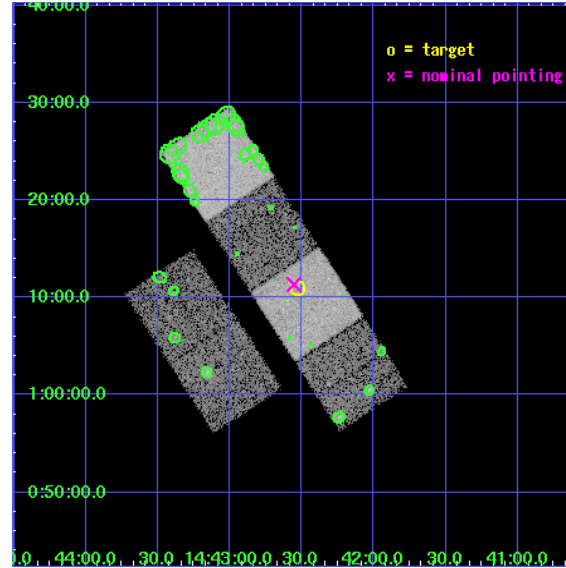
L2 Processing Date : Oct 15 2006

Contents

1	Front	2
2	OBI	3
2.1	OBI	3
2.1.1	Images	3
2.1.2	Bias	3
2.1.3	Parameters	4
2.1.4	Events	4
2.2	Compared Parameters	5
2.3	Aspect	6
2.4	Star Slots	9
2.4.1	Slot 3	9
2.4.2	Slot 4	10
2.4.3	Slot 5	11
2.4.4	Slot 6	12
2.4.5	Slot 7	13
2.5	FID Slots	14
2.5.1	Slot 0	14
2.5.2	Slot 1	15
2.5.3	Slot 2	16
3	Point Sources	17
A	Summary	18
A.1	Status	18
A.2	Comments	18

1 Front

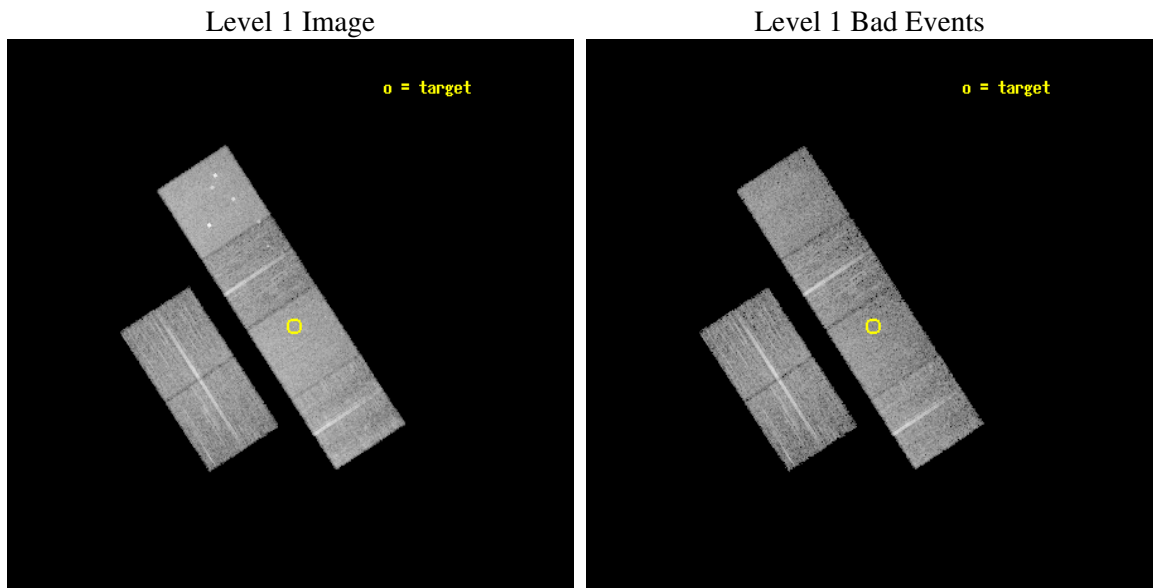
seq_num	700639
obs_id	3960
title	A CHANDRA AND XMM-NEWTON STUDY OF THE MOST DISTANT QUASARS: X-RAYING THE FIRST MASSIVE BLACK HOLES
observer	Prof. William Brandt
object	SDSS J144231+011055
dtcycle	0
cycle	P
ra_targ	220.632083
dec_targ	1.182028
ra_nom	220.63866113825
dec_nom	1.1890740344843
roll_nom	56.960218688275
revision	2
ontime	11148.799958467
livetime	11007.627140392
ontime2	11148.799958467
ontime3	11148.799958467
ontime5	11148.799958467
ontime6	11148.799958467
ontime7	11148.799958467
ontime8	11148.799958467
l2events	105013



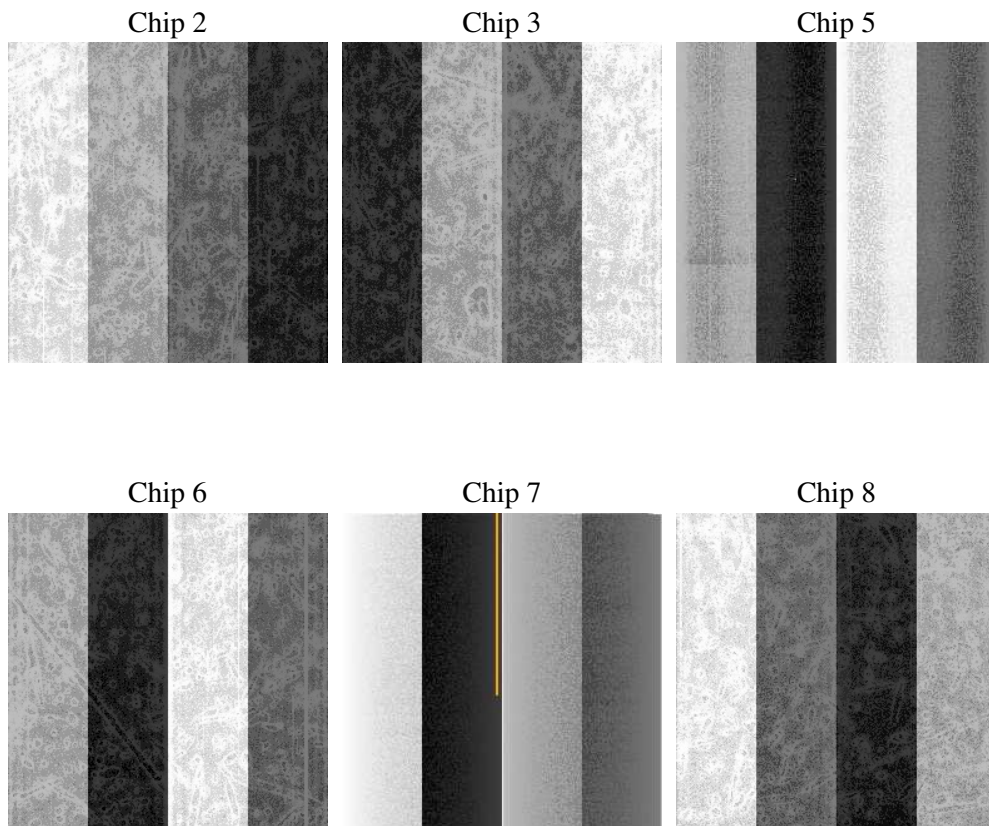
2 OBI

2.1 OBI

2.1.1 Images



2.1.2 Bias



2.1.3 Parameters

obi_num	0
ascdsver	7.6.9
caldbver	3.2.3
date	2006-10-15T02:59:17
revision	2

sched_exp_time	11031.000000
ontime	11340.263763279
ontime2	11340.263763279
ontime3	11343.504783362
ontime5	11340.263763279
ontime6	11340.263763279
ontime7	11340.263763279
ontime8	11343.504783362
l1events	490151

2.1.4 Events

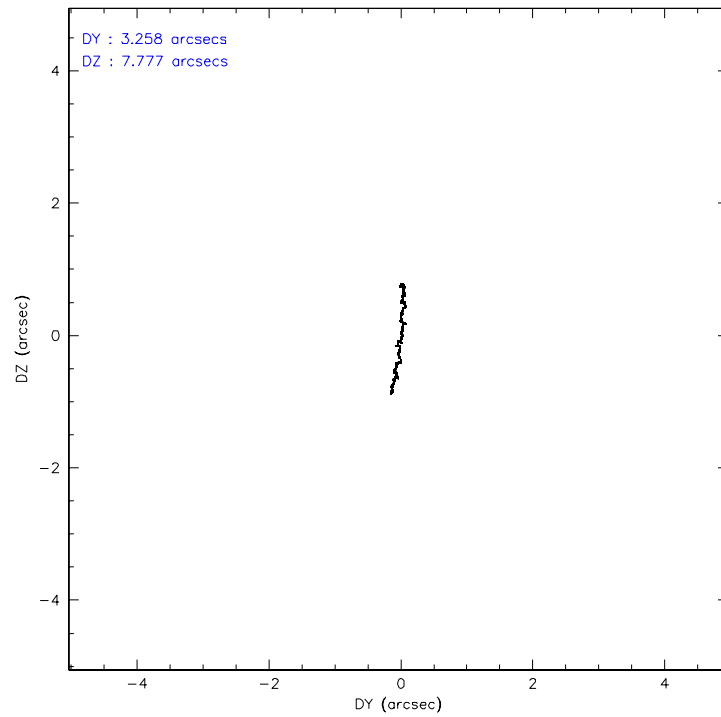
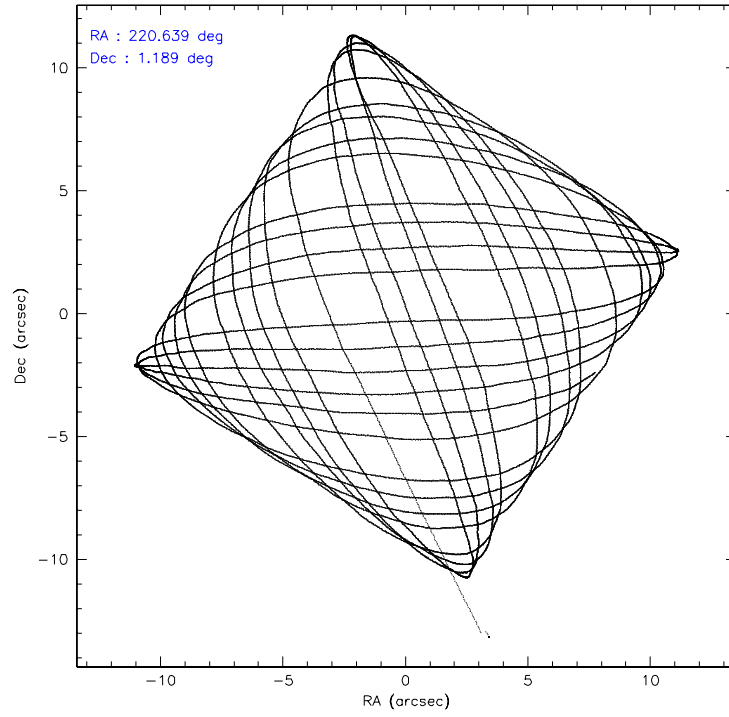
	ccd 2	ccd 3	ccd 5	ccd 6	ccd 7	ccd 8
level 1 events	72092	68241	101755	68846	92067	87150
rejected events	63774	59644	56785	60450	57457	67818
rejected %	88%	87%	55%	87%	62%	77%

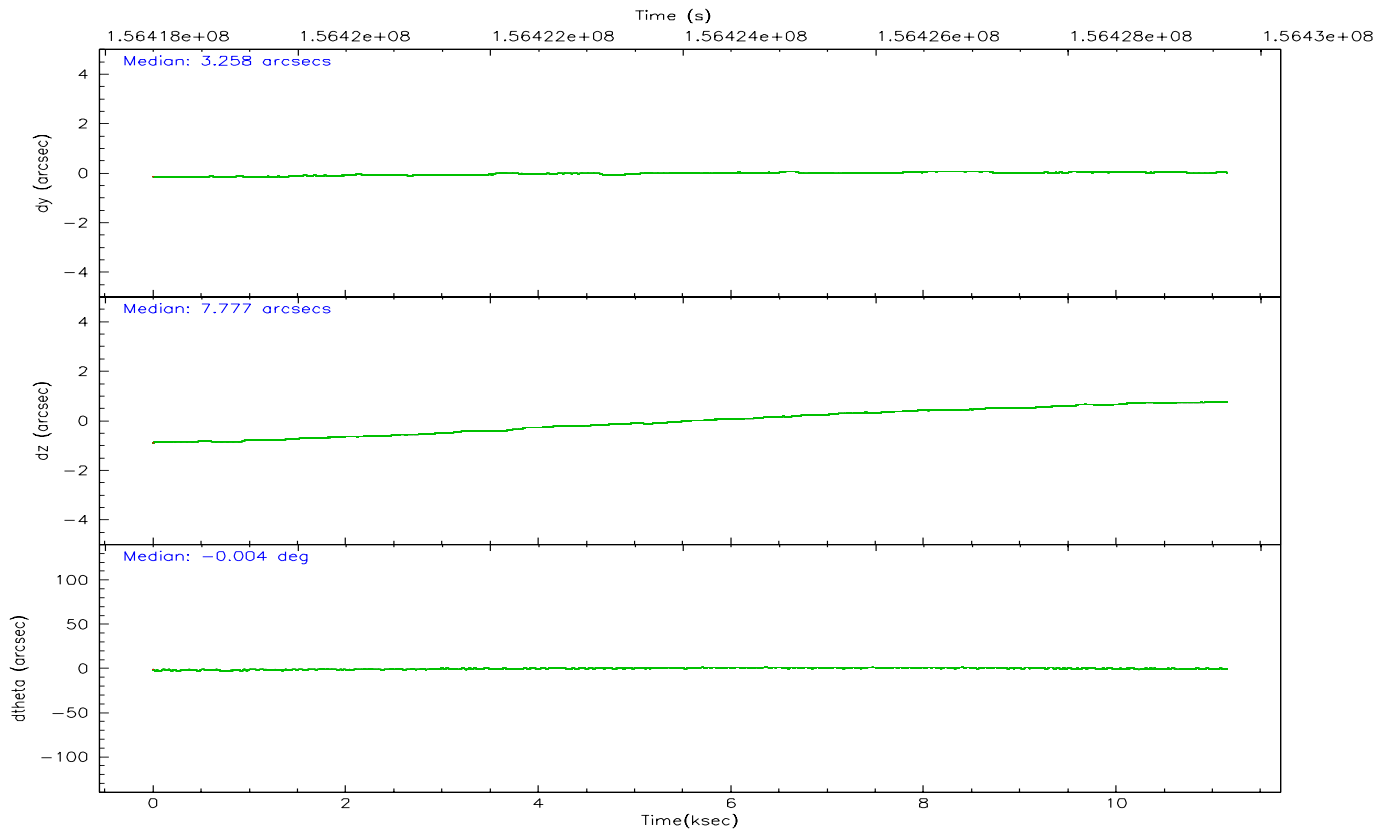
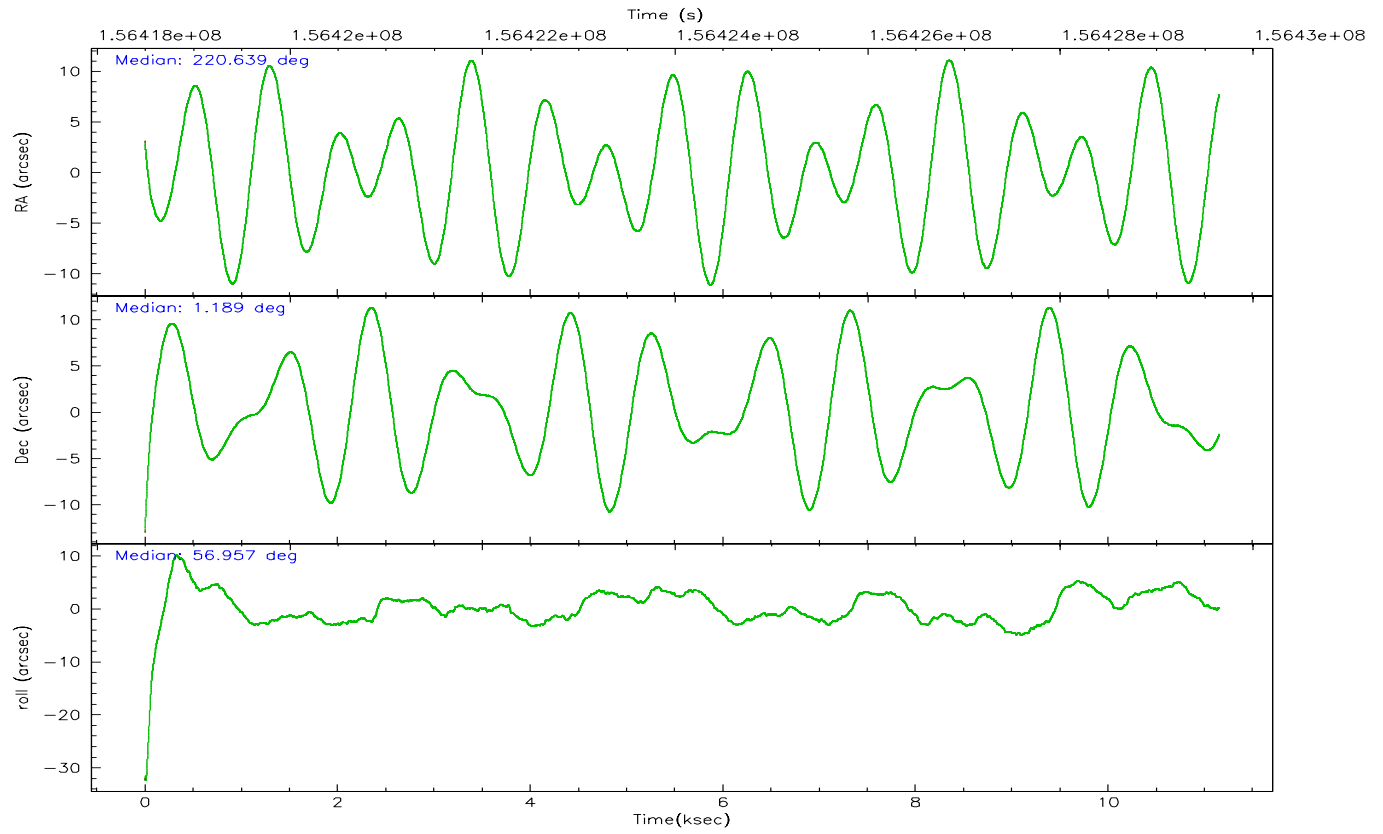
	ccd 2	ccd 3	ccd 5	ccd 6	ccd 7	ccd 8
grade 0 events	3774	4009	5065	3488	2185	6648
	5%	5%	4%	5%	2%	7%
grade 1 events	43	37	127	25	67	65
	0%	0%	0%	0%	0%	0%
grade 2 events	1687	1552	13692	1753	8784	3858
	2%	2%	13%	2%	9%	4%
grade 3 events	803	879	1049	839	1773	2366
	1%	1%	1%	1%	1%	2%
grade 4 events	786	828	951	808	1680	2176
	1%	1%	0%	1%	1%	2%
grade 5 events	2637	2961	4673	3130	5819	3995
	3%	4%	4%	4%	6%	4%
grade 6 events	1397	1485	25025	1643	20800	4667
	1%	2%	24%	2%	22%	5%
grade 7 events	60965	56490	51173	57160	50959	63375
	84%	82%	50%	83%	55%	72%

2.2 Compared Parameters

Parameter	Planned	Actual	Parameter	Planned	Actual
Instrument	ACIS	ACIS	Obspar format version number	6	6
Detector	ACIS-235678	ACIS-235678	Obspar file type	PREDICTED	ACTUAL
Grating	NONE	NONE	Obspar update status	NONE	UPDATED
Data mode	FAINT	FAINT	Number of optional ACIS chips dropped	0	0
Observation mode	POINTING	POINTING	On-chip summing requested	N	N
Pointing RA	220.637617	220.6386611382498	Subarray requested	NONE	NONE
Pointing Dec	1.161875	1.189074034484283	Alternating exposures requested	N	N
Pointing Roll	56.803639	56.96021868827474	Primary exposure time	0.000000	3.2
SIM focus pos (mm)	-0.684267	-0.6828225247311905			
SIM defocus (mm)	0	0.001444936568705701			
SIM translation stage pos (mm)	-190.132523	-190.1425803651734			
SIM translation stage offset (mm)	0	0.01005778216563158			
Observation start time	156418620.184000	156417486.24844			
Observation start date	2002-12-16T09:35:56	2002-12-16T09:18:06			
Observation end time	156429651.184000	156430053.77397			
Observation end date	2002-12-16T12:39:47	2002-12-16T12:47:33			
Read mode	TIMED	TIMED			

2.3 Aspect



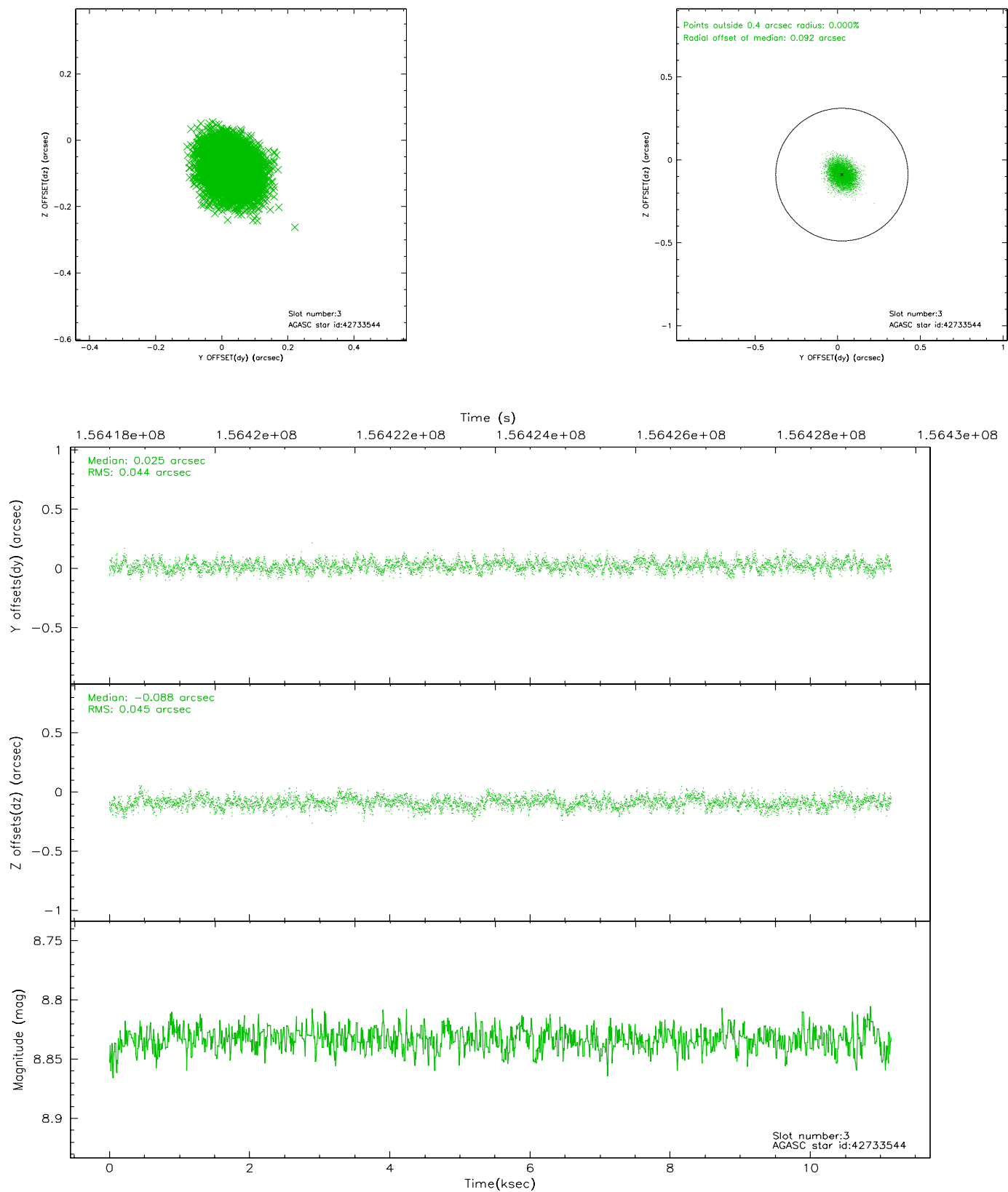


Slot Statistics

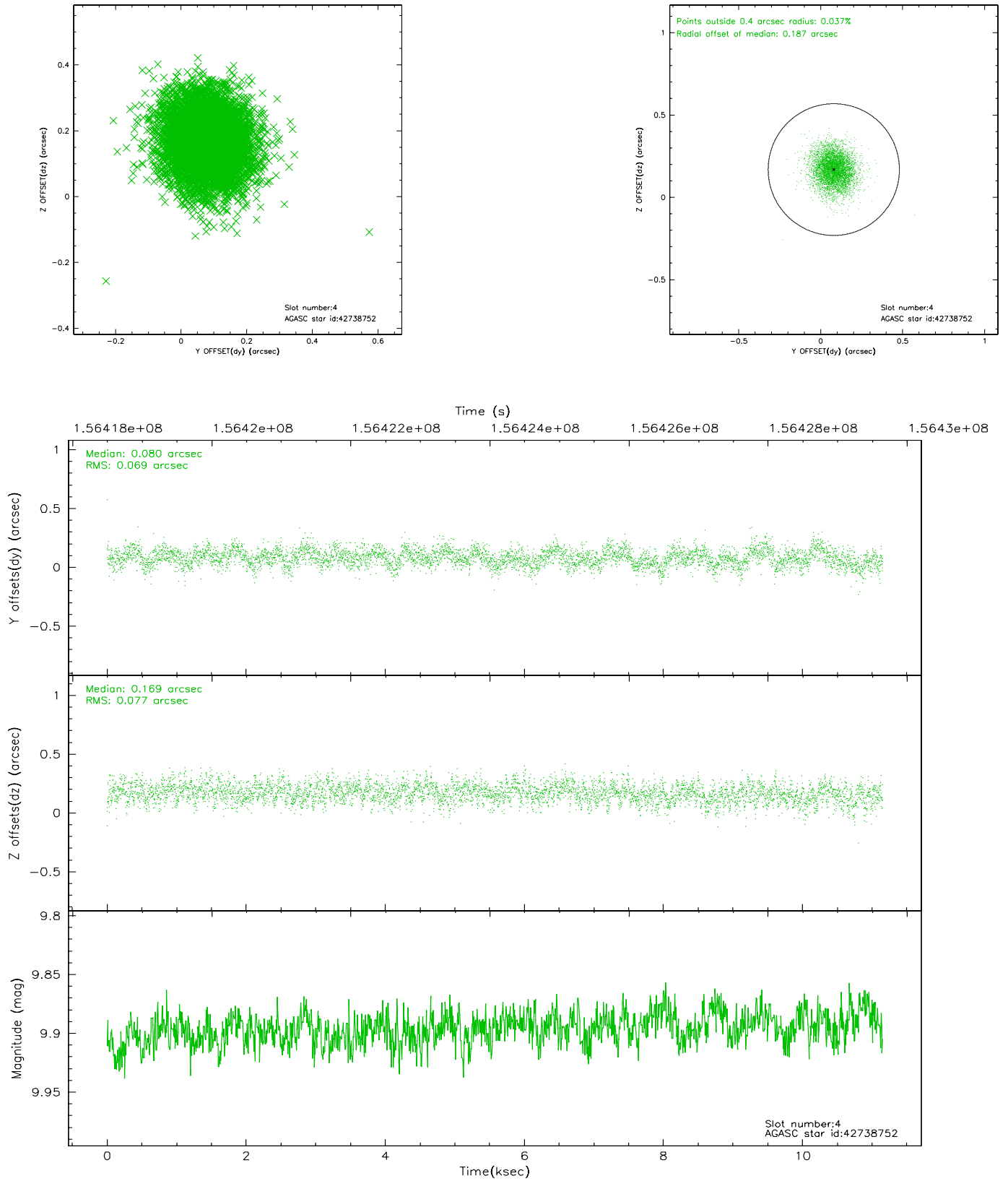
slot	status	id	mag	n_pts	med_dy	med_dz	dr1	dr2	ra	dec	mean_y	mean_z
0	FID	ACIS-S-2	7.12	2721	-0.005	0.010	0.010	0.016	0.000000	0.000000	-755.90	-1728.87
1	FID	ACIS-S-4	7.20	2721	-0.028	0.000	0.005	0.010	0.000000	0.000000	2157.16	179.12
2	FID	ACIS-S-5	7.24	2721	0.002	-0.001	0.009	0.016	0.000000	0.000000	-1808.13	173.33
3	GUIDE	42733544	8.83	5441	0.025	-0.088	0.068	0.109	220.636772	1.286282	373.30	247.23
4	GUIDE	42738752	9.90	5436	0.080	0.169	0.109	0.178	220.955002	0.889090	-195.81	-1493.94
5	GUIDE	42739904	9.40	5439	0.044	0.076	0.083	0.137	221.063801	1.147543	797.04	-1312.46
6	GUIDE	42734040	10.11	5438	0.037	-0.066	0.124	0.205	220.520497	1.589788	1058.62	1195.42
7	GUIDE	42732896	7.80	5440	-0.189	-0.085	0.057	0.099	220.804479	1.824716	2325.57	803.93

2.4 Star Slots

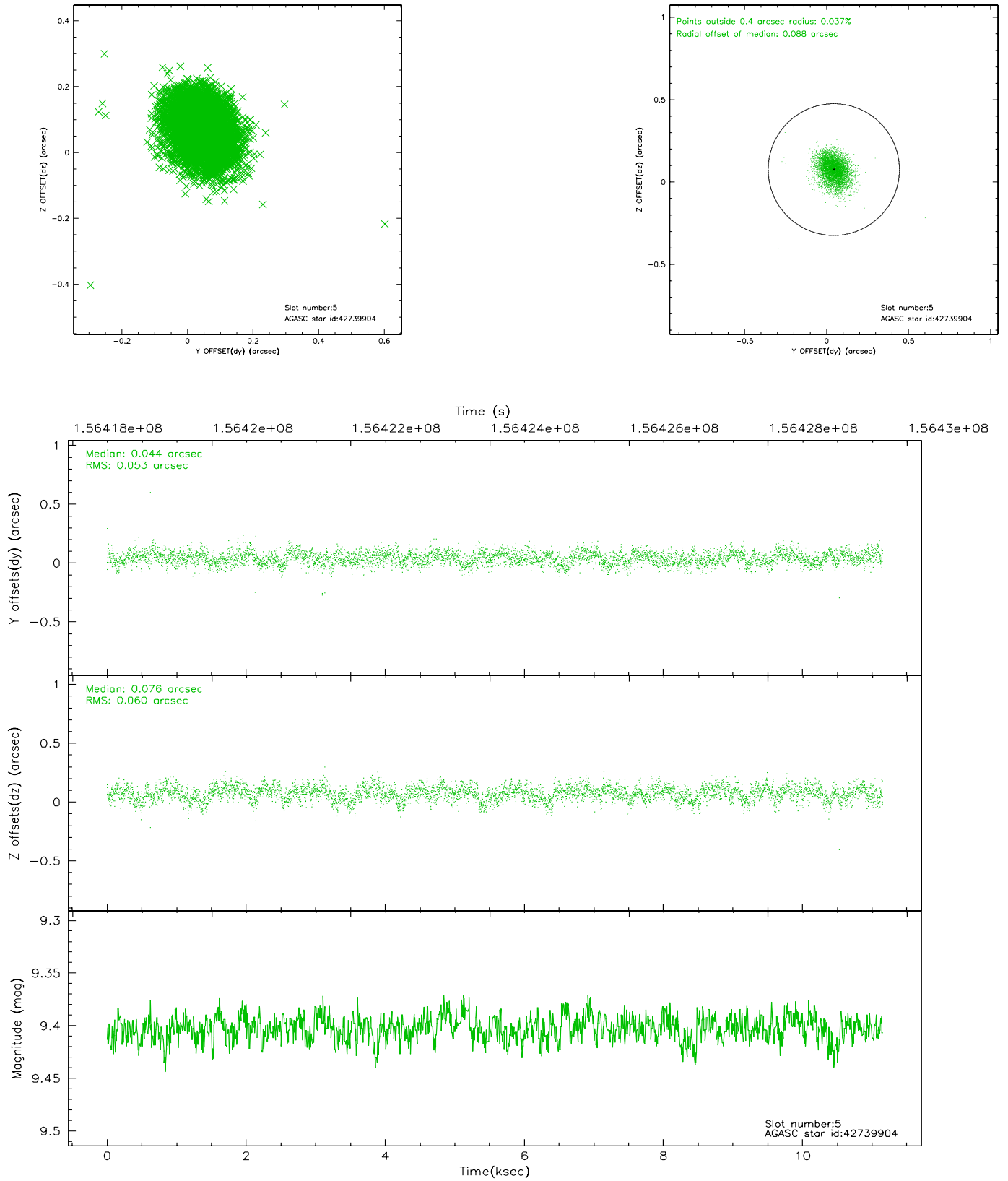
2.4.1 Slot 3



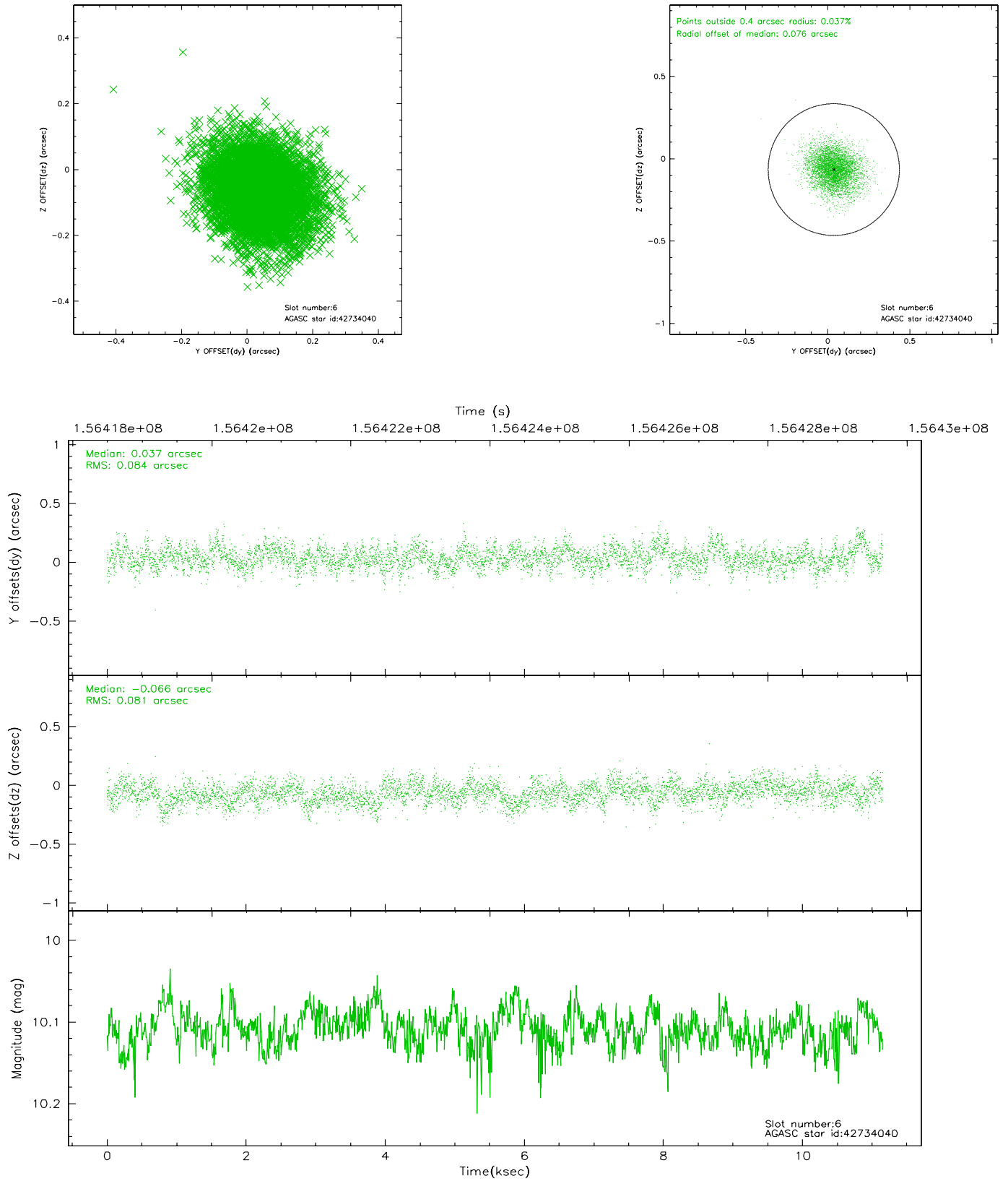
2.4.2 Slot 4



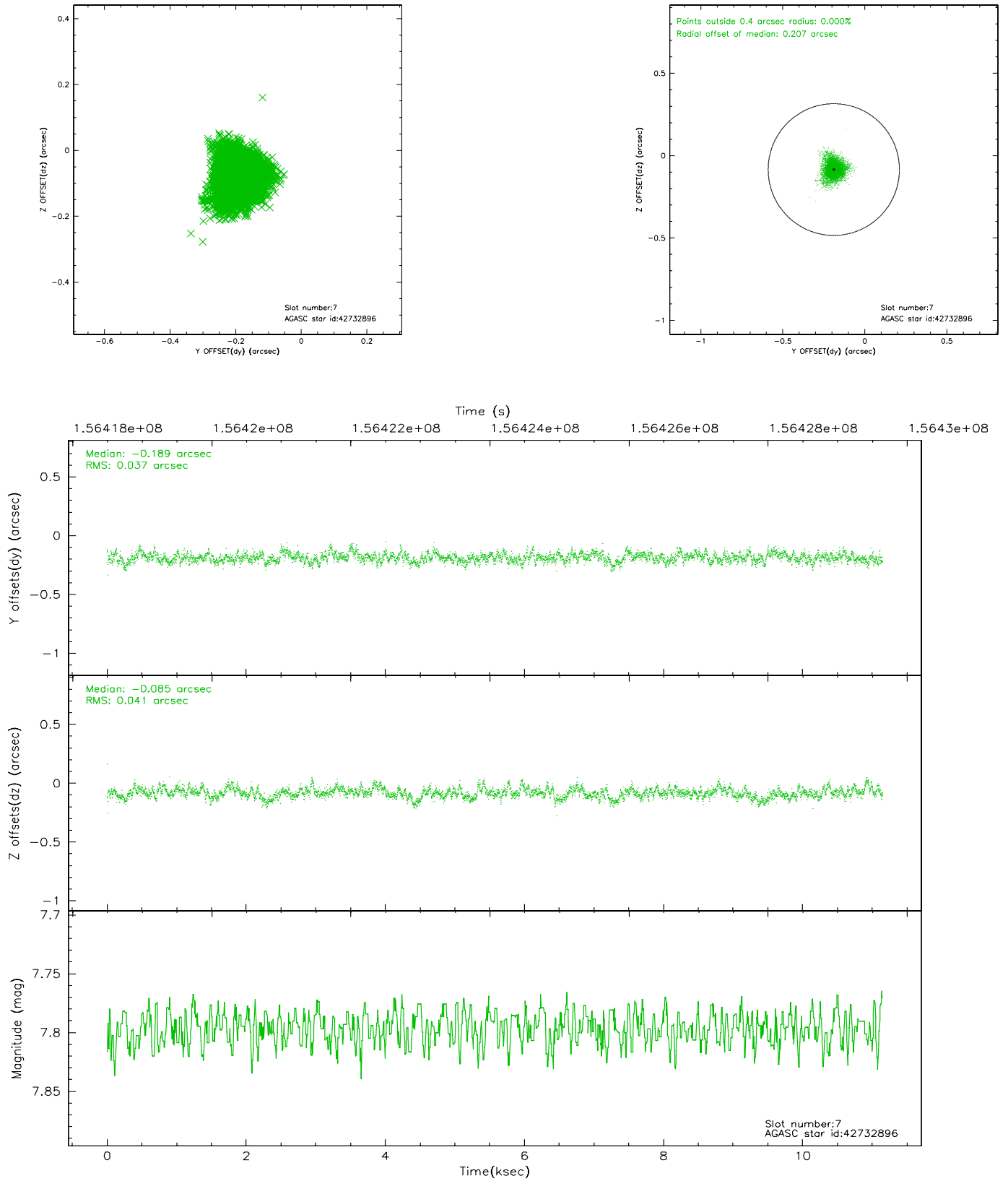
2.4.3 Slot 5



2.4.4 Slot 6

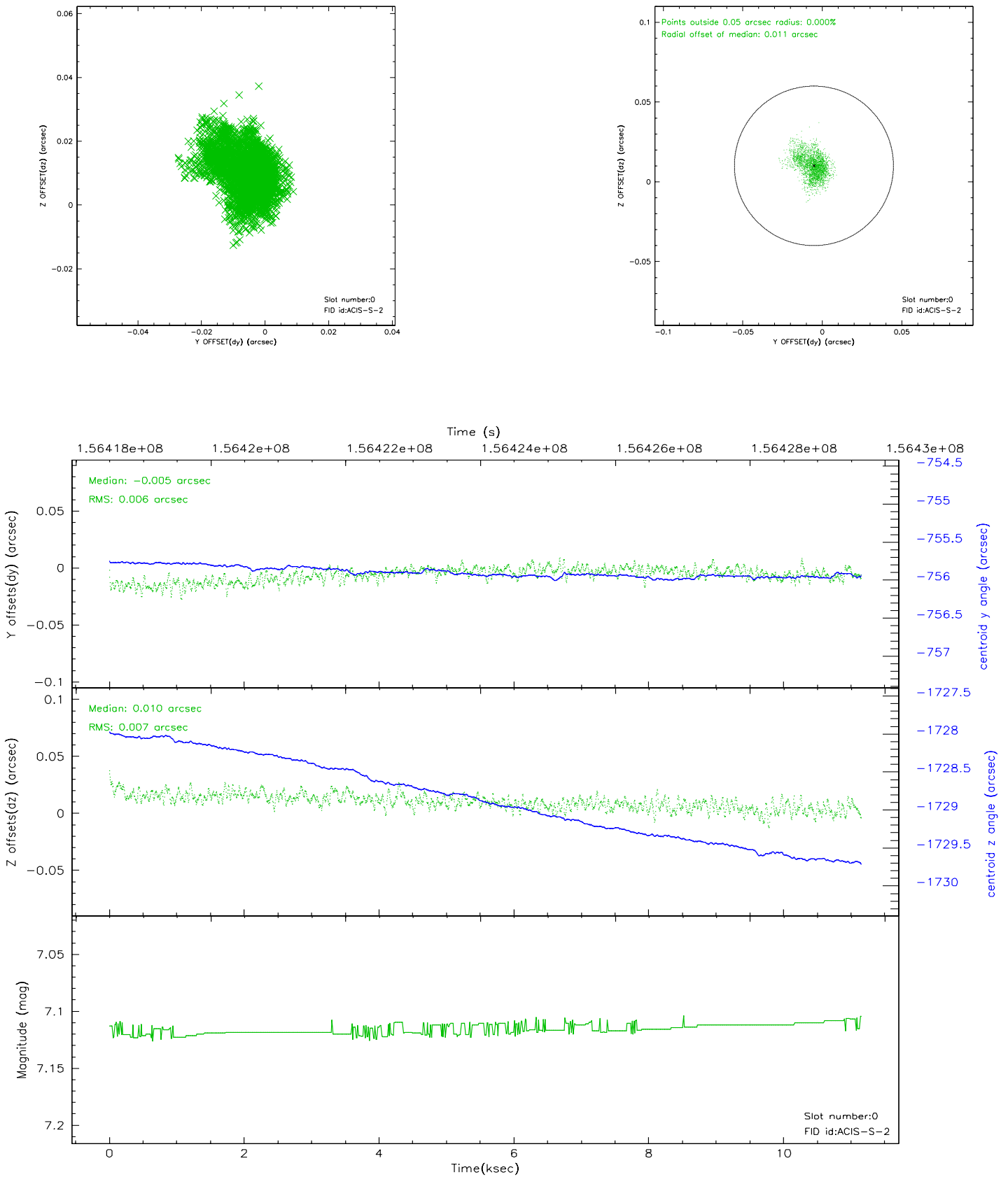


2.4.5 Slot 7

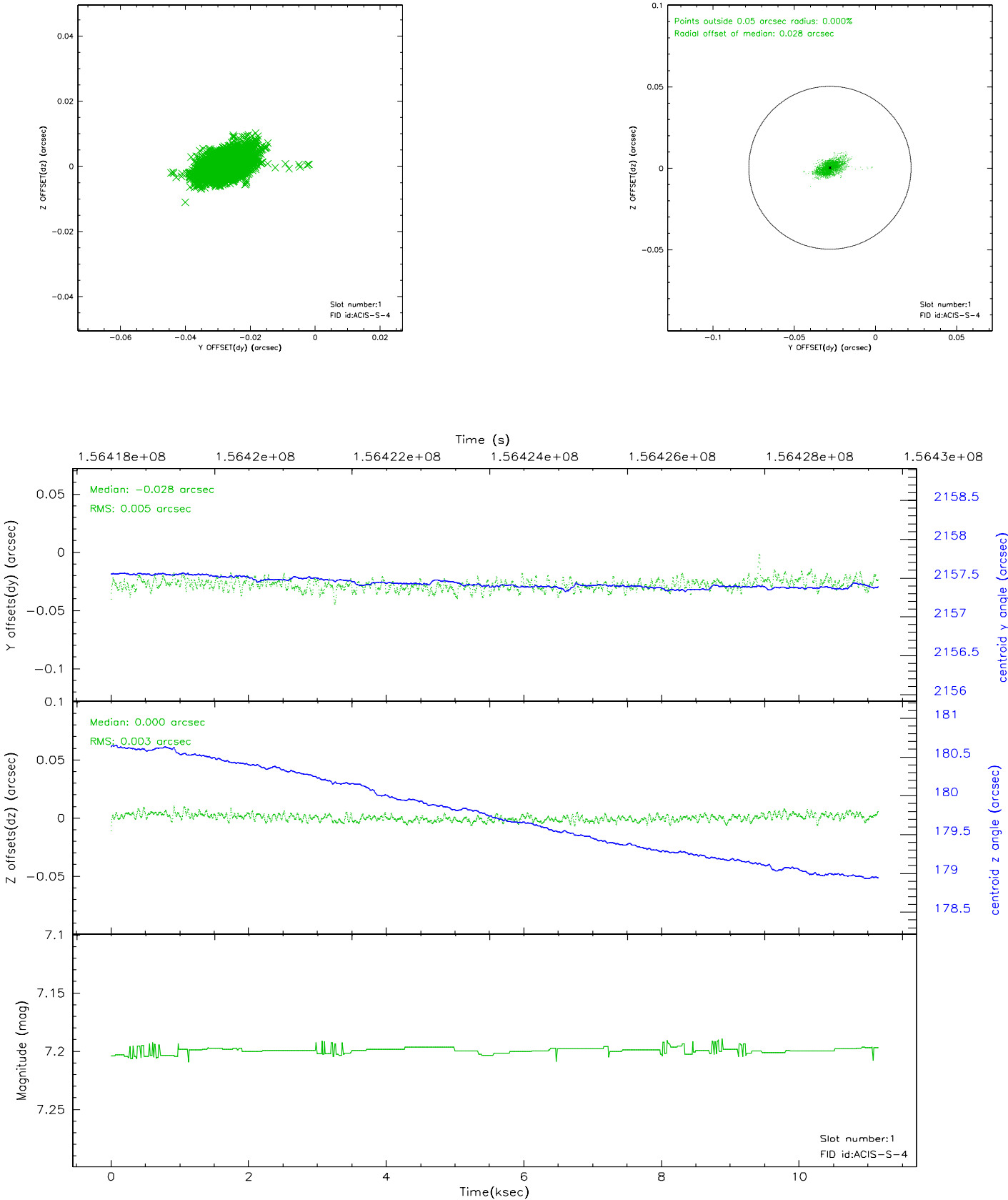


2.5 FID Slots

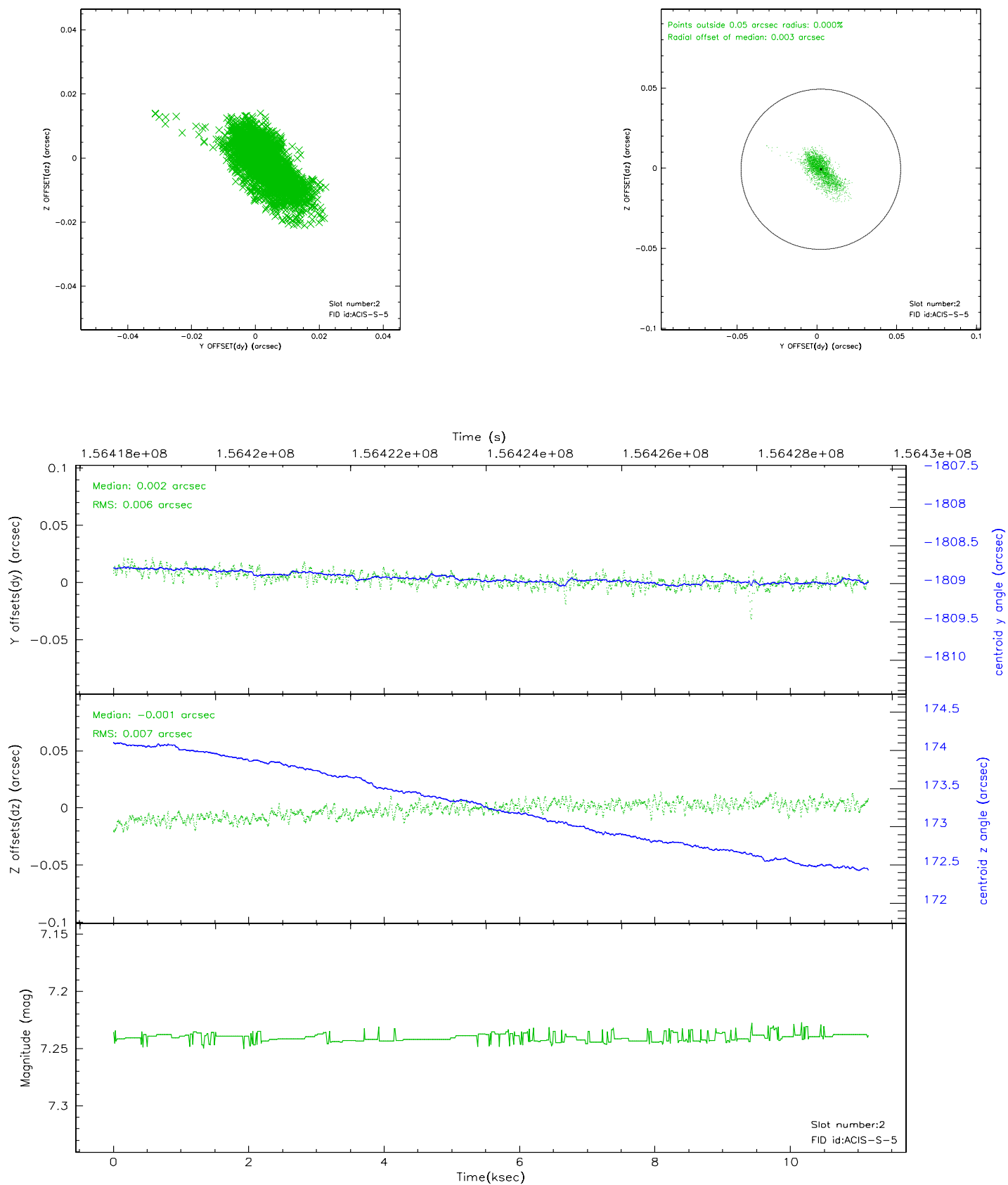
2.5.1 Slot 0



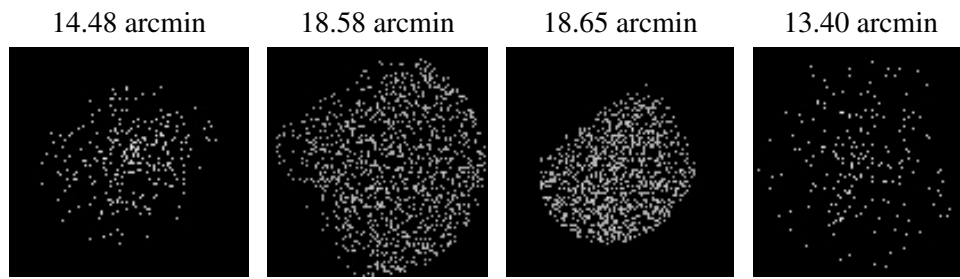
2.5.2 Slot 1



2.5.3 Slot 2



3 Point Sources



A Summary

A.1 Status

V&V Scientist	Jen Lauer
V&V Date (YYYY-MM-DD)	2006.10.16
V&V Edition	1
V&V Disposition and Status	OK
V&V Charge Time	11.148

A.2 Comments