

V&V Reference Report

L2 ASCDS Version : 7.6.8

Observation 3940 - L2 Version 001
Chandra X-Ray Center

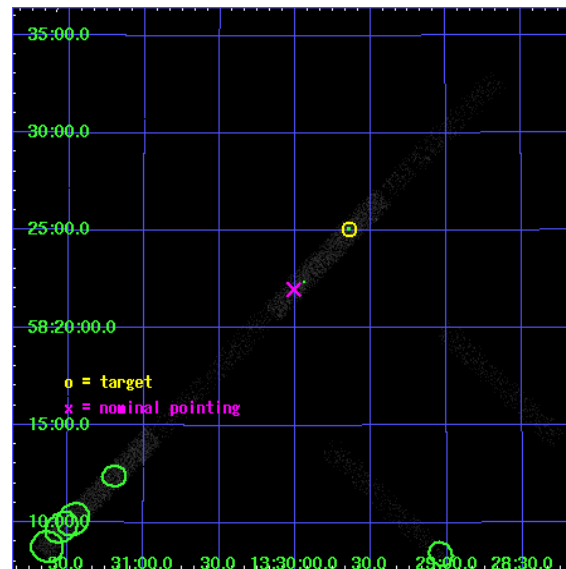
L2 Processing Date : Jul 5 2006

Contents

1	Front	2
2	OBI	3
2.1	OBI	3
2.1.1	Images	3
2.1.2	Bias	3
2.1.3	Parameters	4
2.1.4	Events	4
2.2	Compared Parameters	5
2.3	Aspect	6
2.4	Star Slots	9
2.4.1	Slot 3	9
2.4.2	Slot 4	10
2.4.3	Slot 5	11
2.4.4	Slot 6	12
2.4.5	Slot 7	13
2.5	FID Slots	14
2.5.1	Slot 0	14
2.5.2	Slot 1	15
2.5.3	Slot 2	16
3	Point Sources	17
A	Summary	18
A.1	Status	18
A.2	Comments	18

1 Front

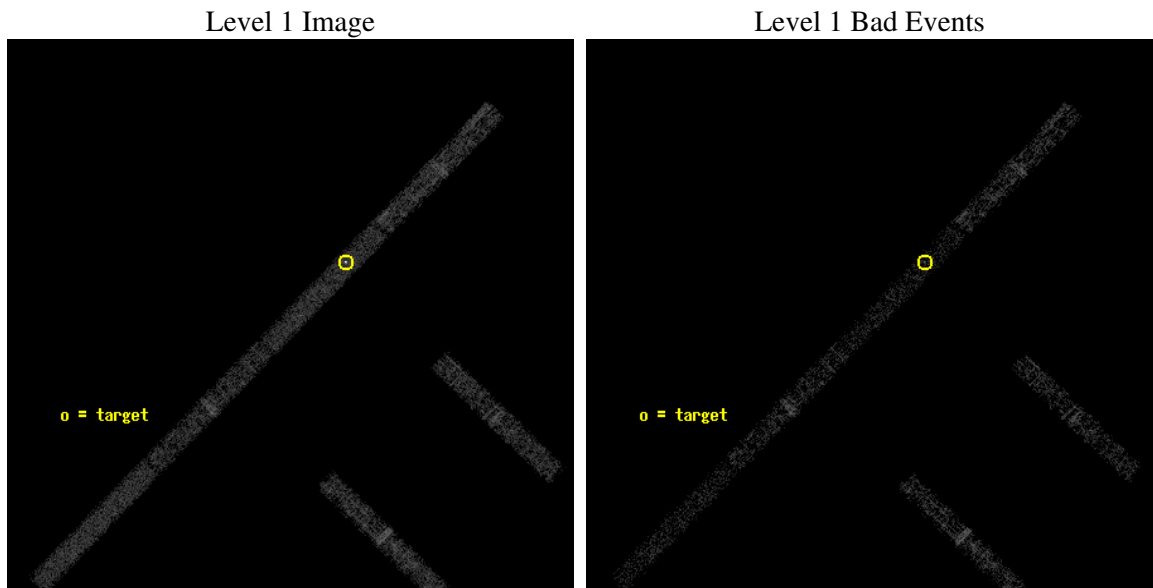
seq_num	600314
obs_id	3940
title	PROBING THE SPECTRAL VARIABILITY OF THE ULTRALUMINOUS X-RAY SOURCE NGC 5204 X-1
observer	Dr Timothy Roberts
object	NGC 5204 X-1
dtcycle	0
cycle	P
ra_targ	202.410833
dec_targ	58.418333
ra_nom	202.50244533595
dec_nom	58.366457056864
roll_nom	314.28422610265
revision	2
ontime	5125.399912715
livetime	4841.5469325549
ontime2	5125.399912715
ontime3	5125.399912715
ontime5	5125.399912715
ontime6	5125.399912715
ontime7	5125.399912715
ontime8	5125.399912715
l2events	8687



2 OBI

2.1 OBI

2.1.1 Images



2.1.2 Bias

Chip 2

Chip 3

Chip 5



Chip 6

Chip 7

Chip 8



2.1.3 Parameters

obi_num	0
ascdsver	7.6.8
caldsver	3.2.2
date	2006-07-06T01:00:40
revision	2

sched_exp_time	5000.000000
ontime	6002.3560872376
ontime2	6002.3560872376
ontime3	6003.097127229
ontime5	6002.3560872376
ontime6	6002.3560872376
ontime7	6002.3560872376
ontime8	6003.097127229
l1events	50624

2.1.4 Events

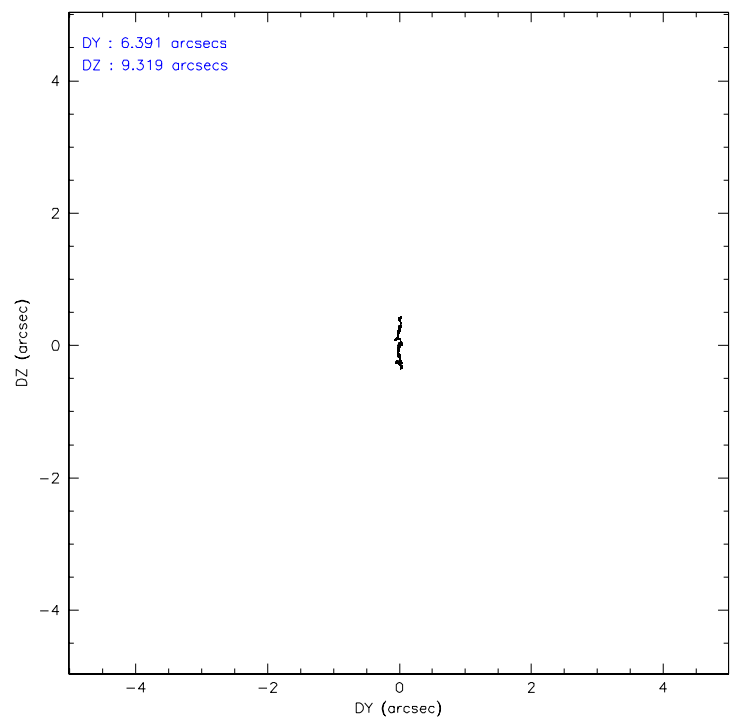
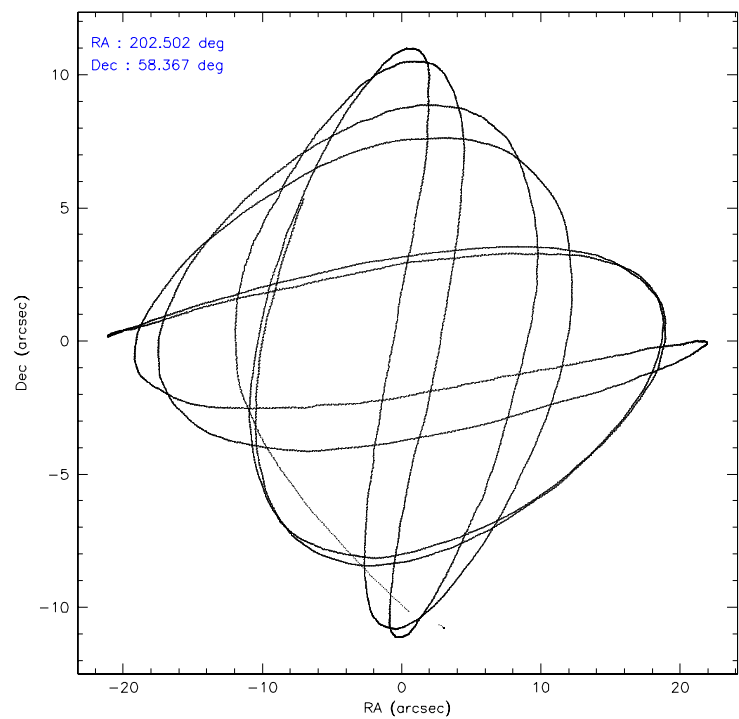
	ccd 2	ccd 3	ccd 5	ccd 6	ccd 7	ccd 8
level 1 events	8243	7497	8261	7447	9768	9408
rejected events	7602	6912	5432	6847	5669	8303
rejected %	92%	92%	65%	91%	58%	88%

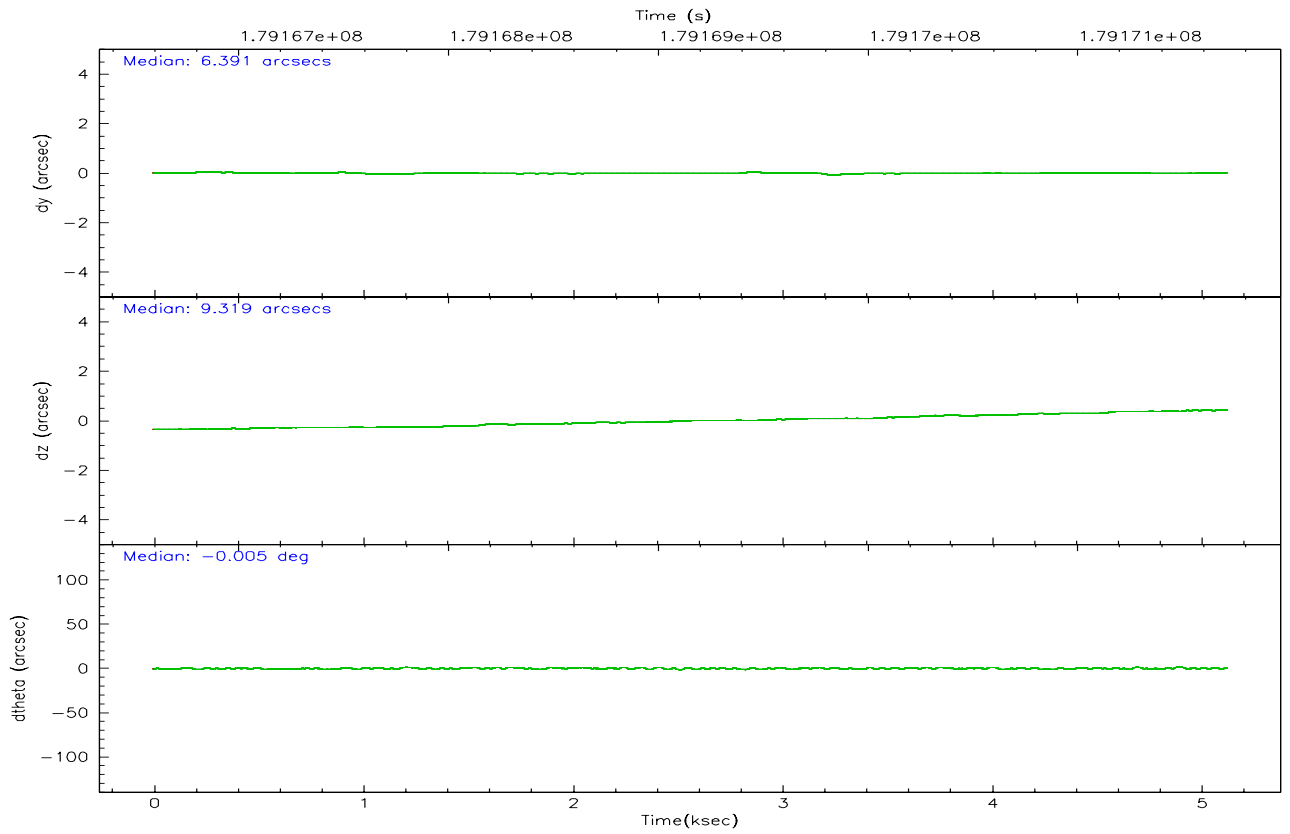
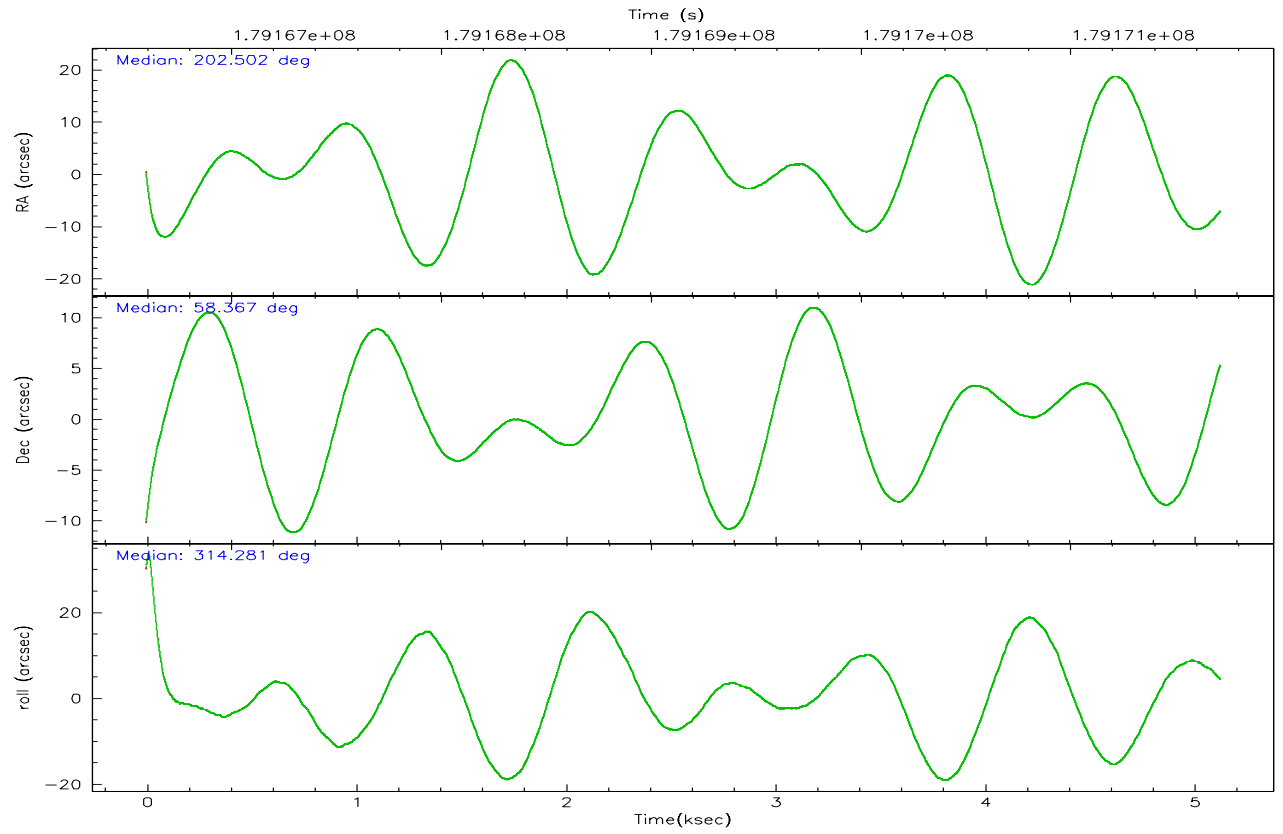
	ccd 2	ccd 3	ccd 5	ccd 6	ccd 7	ccd 8
grade 0 events	887	890	321	847	976	1013
	10%	11%	3%	11%	9%	10%
grade 1 events	5	3	8	5	5	4
	0%	0%	0%	0%	0%	0%
grade 2 events	350	277	1372	285	1438	439
	4%	3%	16%	3%	14%	4%
grade 3 events	177	183	161	171	470	253
	2%	2%	1%	2%	4%	2%
grade 4 events	189	171	188	163	484	205
	2%	2%	2%	2%	4%	2%
grade 5 events	201	197	354	214	451	239
	2%	2%	4%	2%	4%	2%
grade 6 events	272	281	2110	298	2209	509
	3%	3%	25%	4%	22%	5%
grade 7 events	6162	5495	3747	5464	3735	6746
	74%	73%	45%	73%	38%	71%

2.2 Compared Parameters

Parameter	Planned	Actual	Parameter	Planned	Actual
Instrument	ACIS	ACIS	Obspar format version number	6	6
Detector	ACIS-235678	ACIS-235678	Obspar file type	PREDICTED	ACTUAL
Grating	NONE	NONE	Obspar update status	NONE	UPDATED
Data mode	FAINT	FAINT	On-chip summing requested	N	N
Observation mode	POINTING	POINTING	Subarray requested	1/8	1/8
Pointing RA	202.452363	202.50244533595	Subarray start row	0	449
Pointing Dec	58.373464	58.36645705686404	Subarray row count	1024	128
Pointing Roll	314.170131	314.28422610265	Alternating exposures requested	N	N
SIM focus pos (mm)	-0.684267	-0.6828225247311905	Primary exposure time	0.000000	0.7
SIM defocus (mm)	0	0.001444936568705701			
SIM translation stage pos (mm)	-190.132523	-190.1400660498719			
SIM translation stage offset (mm)	0	0.00754346686406393			
Observation start time	179166712.184000	179165505.93529			
Observation start date	2003-09-05T16:30:48	2003-09-05T16:11:45			
Observation end time	179171712.184000	179172362.16058			
Observation end date	2003-09-05T17:54:08	2003-09-05T18:06:02			
Read mode	TIMED	TIMED			

2.3 Aspect



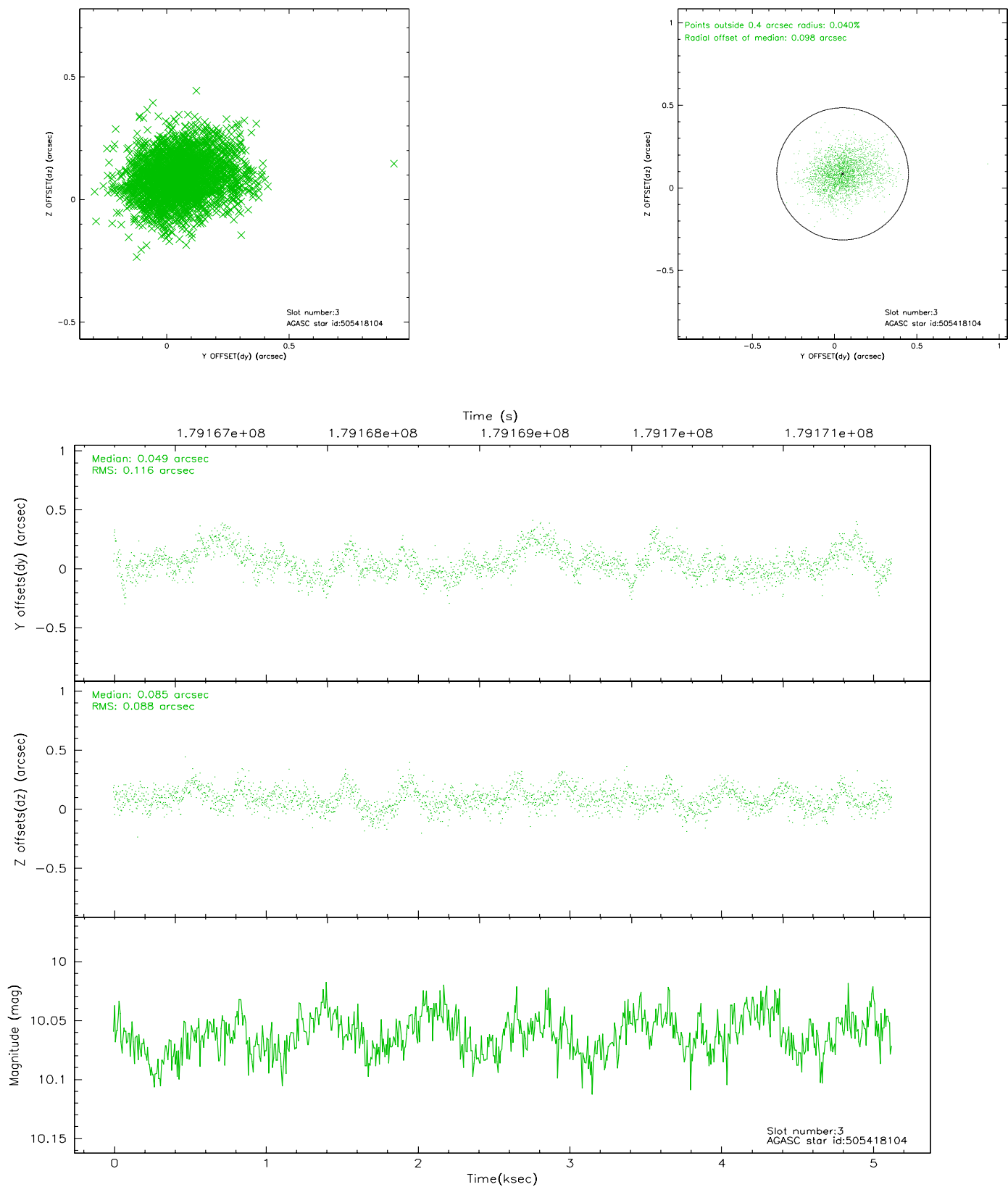


Slot Statistics

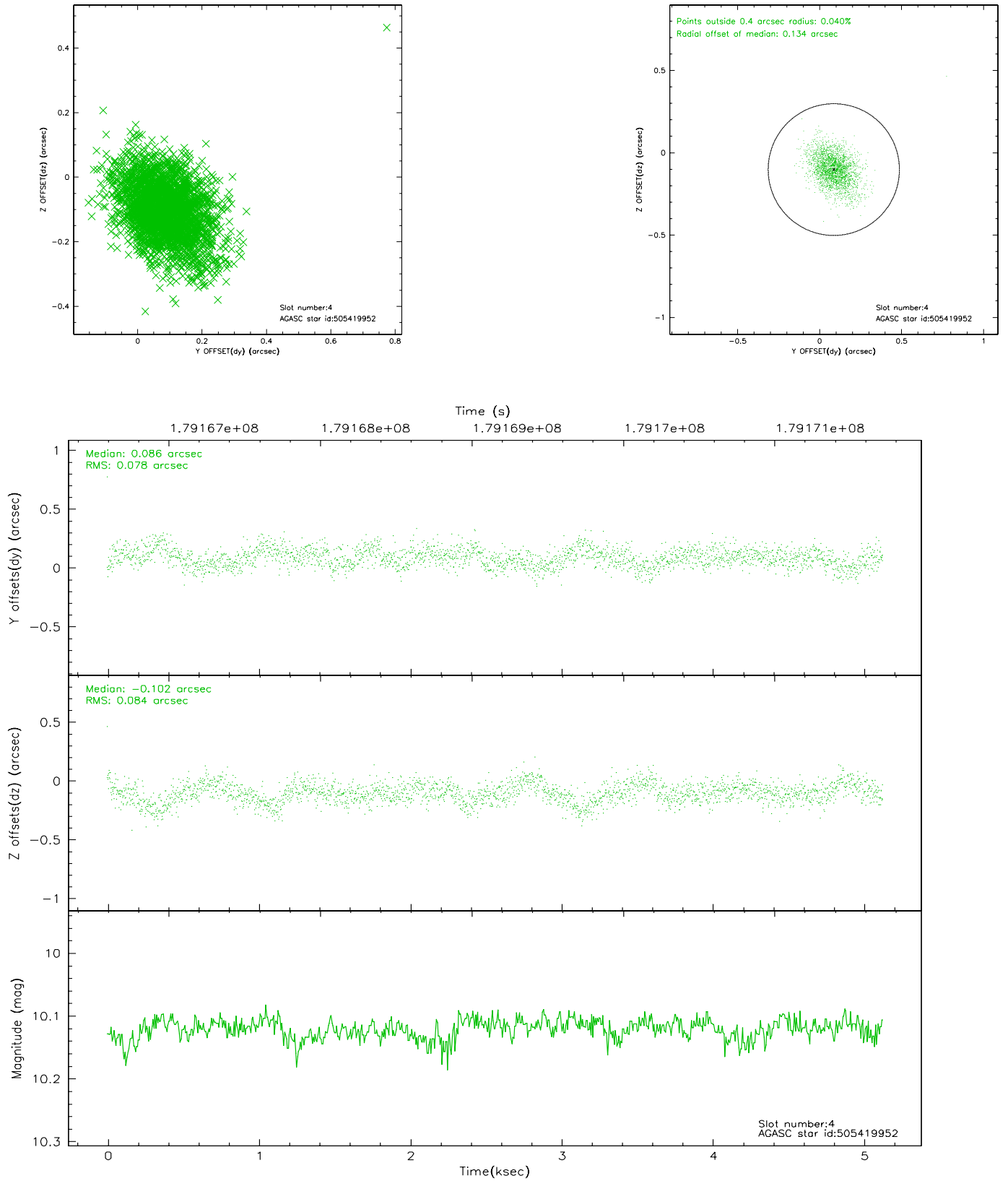
slot	status	id	mag	n_pts	med_dy	med_dz	dr1	dr2	ra	dec	mean_y	mean_z
0	FID	ACIS-S-1	7.18	1251	-0.014	0.026	0.007	0.015	0.000000	0.000000	936.88	-1726.16
1	FID	ACIS-S-4	7.20	1251	0.010	0.003	0.007	0.011	0.000000	0.000000	2154.98	176.75
2	FID	ACIS-S-6	7.35	1251	-0.019	-0.018	0.007	0.012	0.000000	0.000000	404.35	815.44
3	GUIDE	505418104	10.06	2499	0.049	0.085	0.153	0.254	204.045955	58.342161	2153.55	2106.37
4	GUIDE	505419952	10.12	2500	0.086	-0.102	0.118	0.205	201.880700	58.804366	-1857.31	320.39
5	GUIDE	505421936	8.86	2502	-0.162	0.066	0.083	0.131	201.854843	57.887820	453.28	-2034.38
6	GUIDE	505421968	8.20	2501	0.051	-0.065	0.070	0.109	202.022601	58.209270	-145.11	-995.35
7	GUIDE	505422344	8.62	2499	-0.027	0.016	0.069	0.110	202.767077	57.846963	1779.14	-887.29

2.4 Star Slots

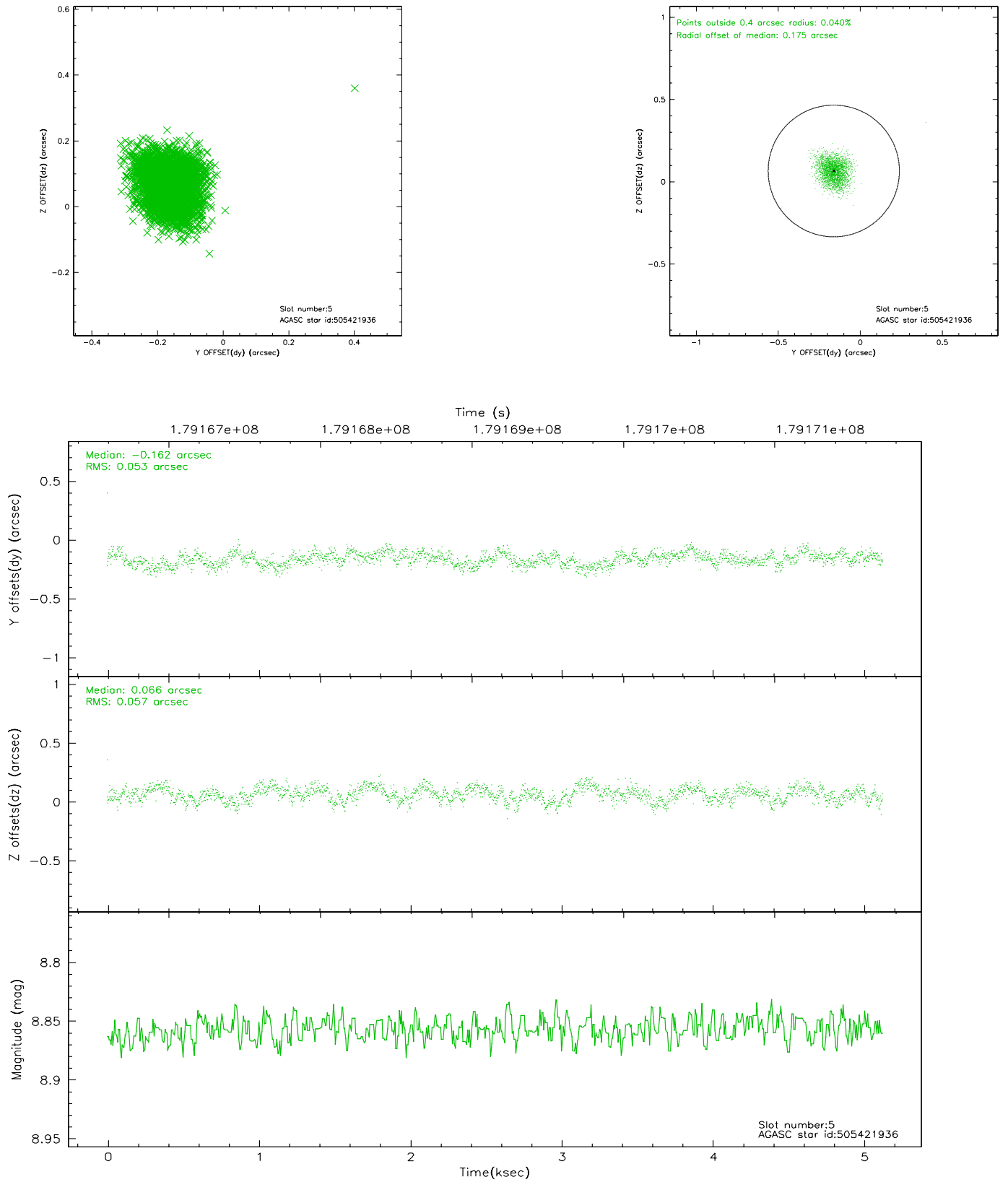
2.4.1 Slot 3



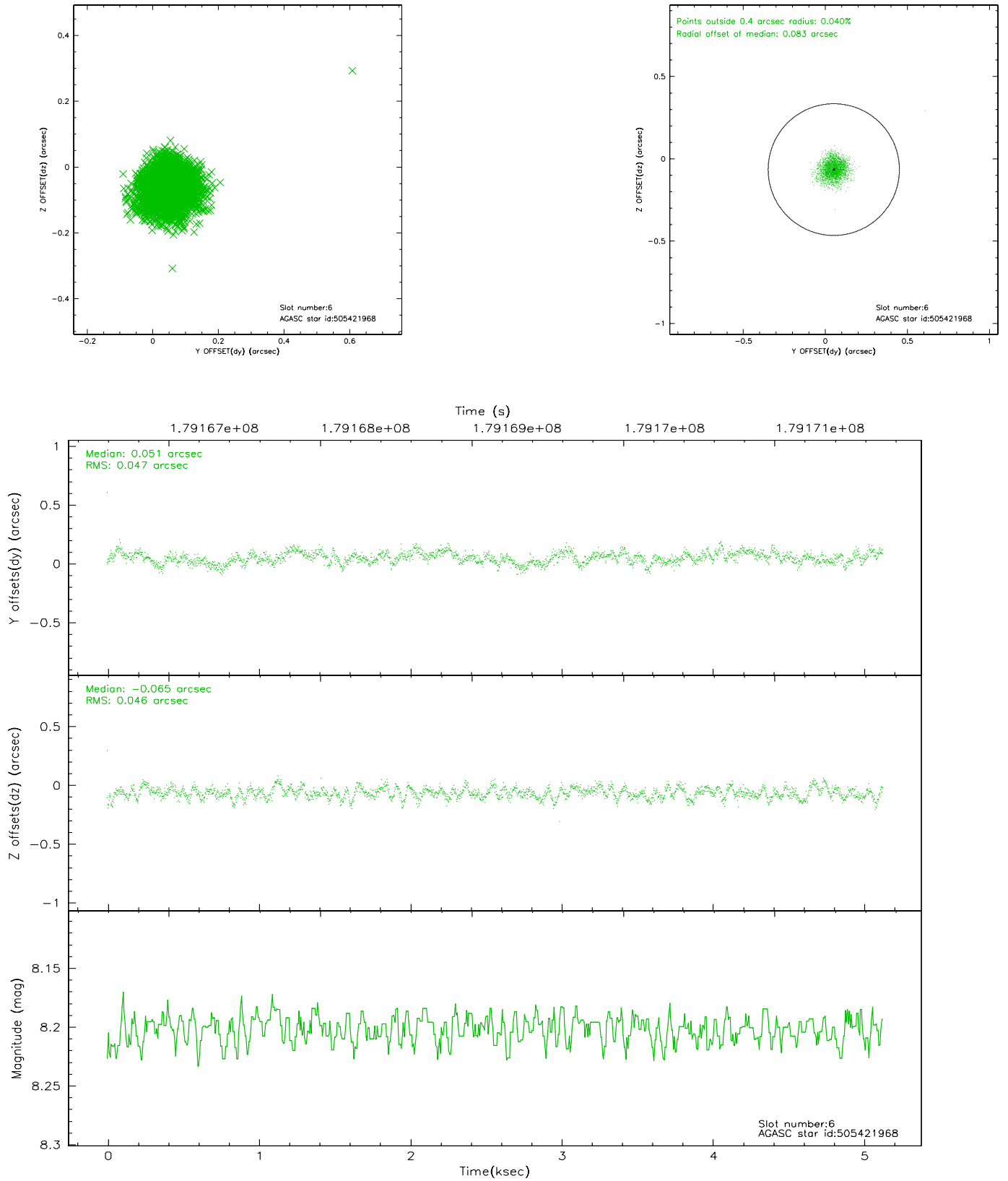
2.4.2 Slot 4



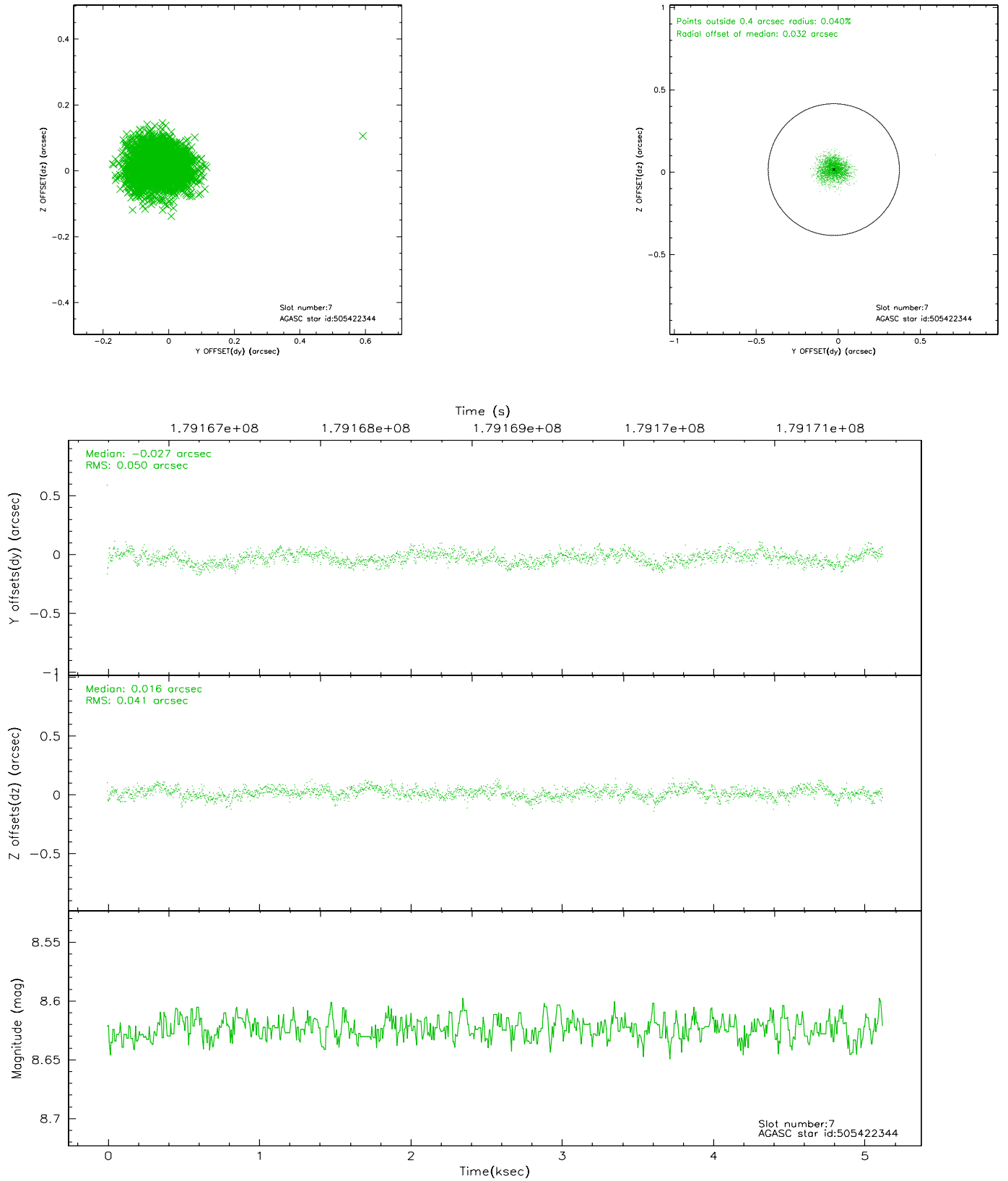
2.4.3 Slot 5



2.4.4 Slot 6

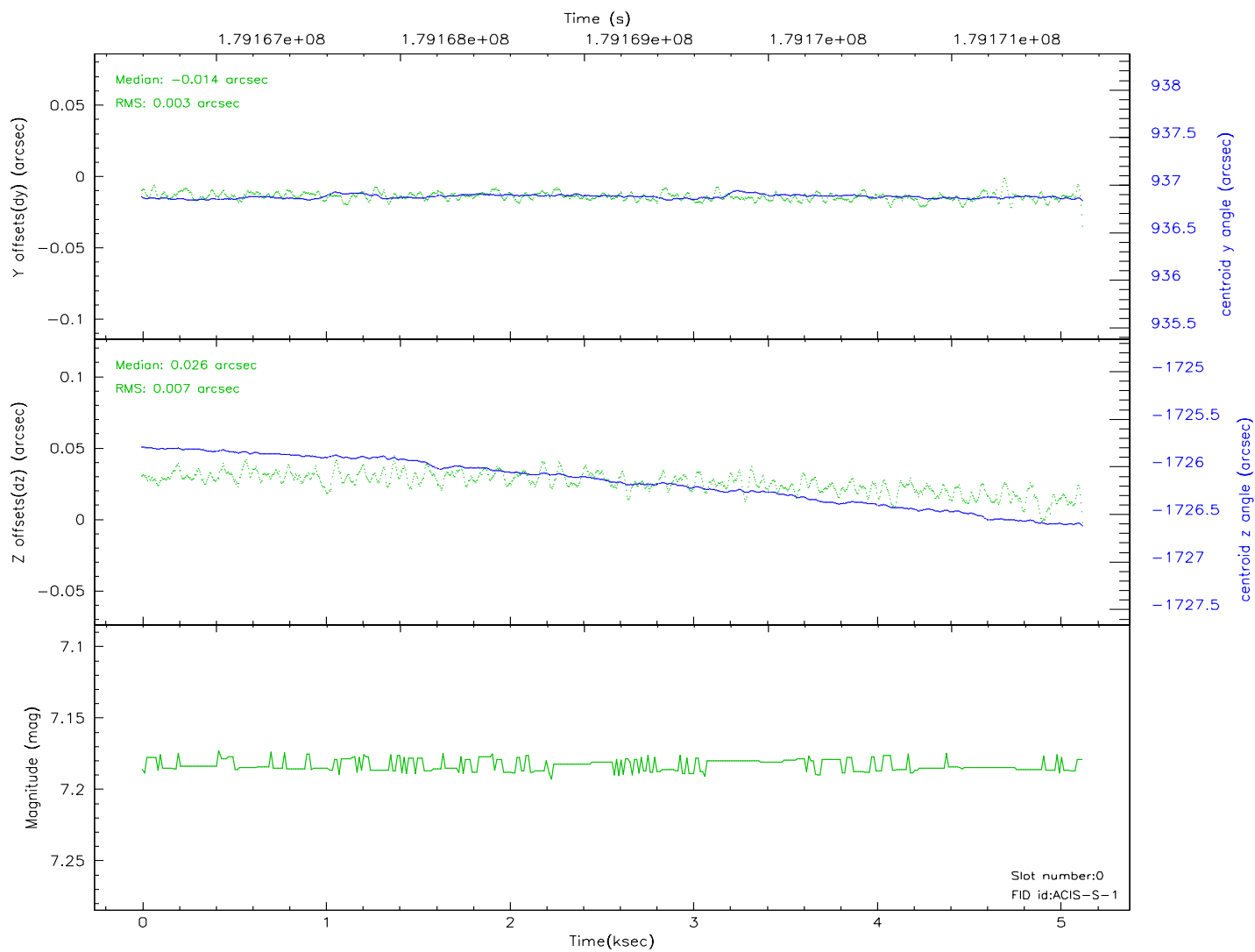
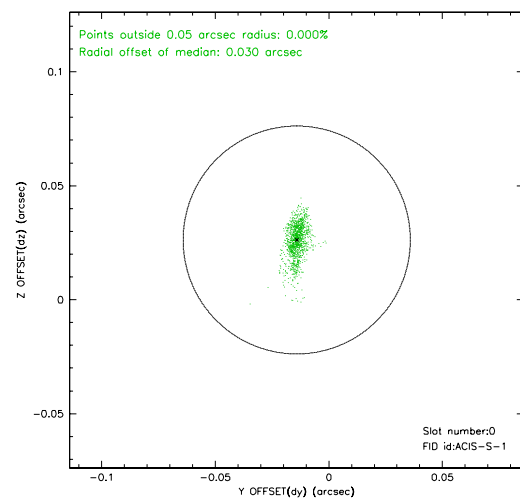
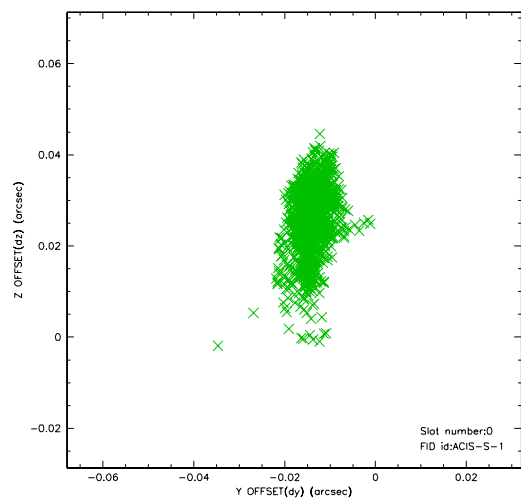


2.4.5 Slot 7

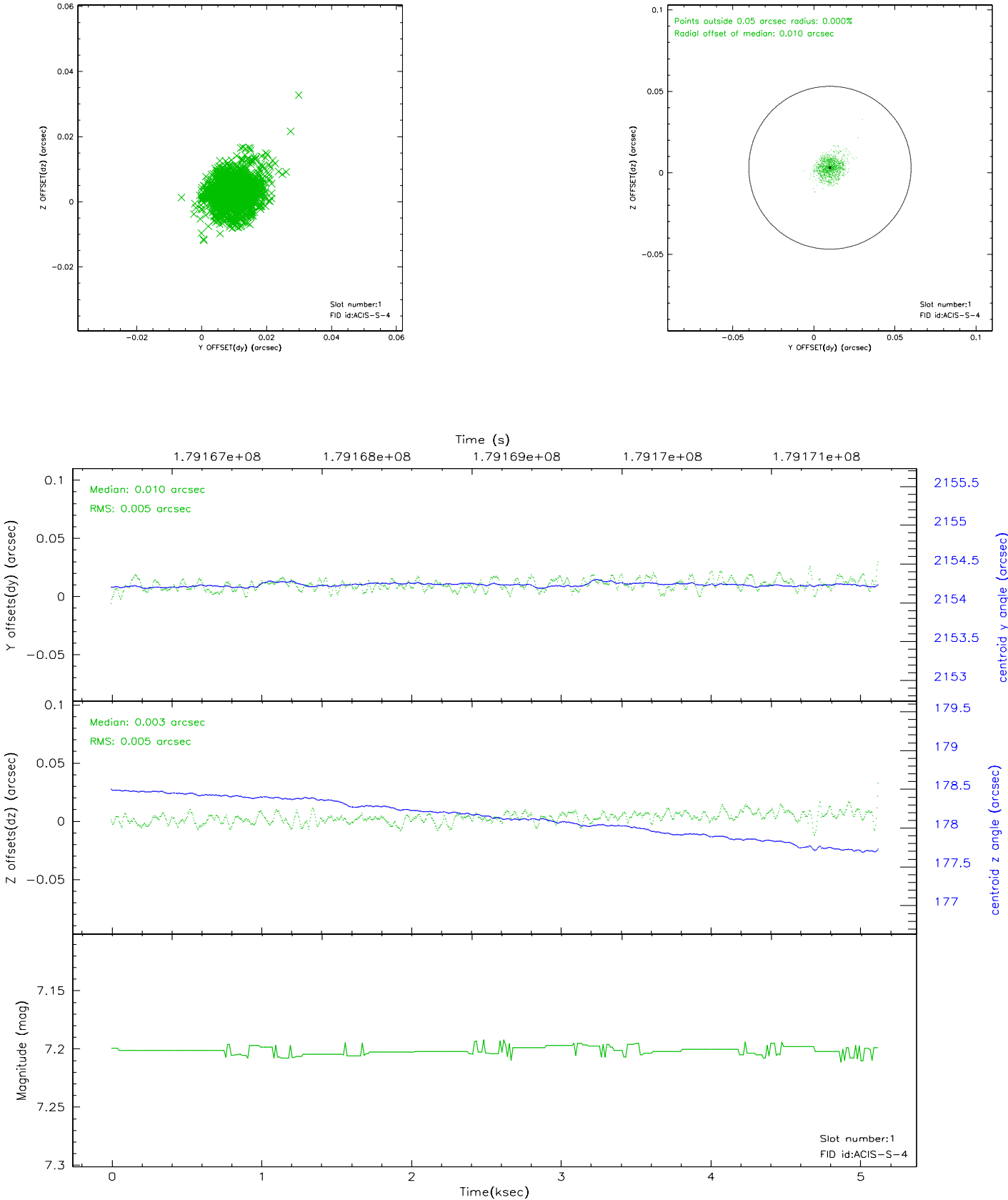


2.5 FID Slots

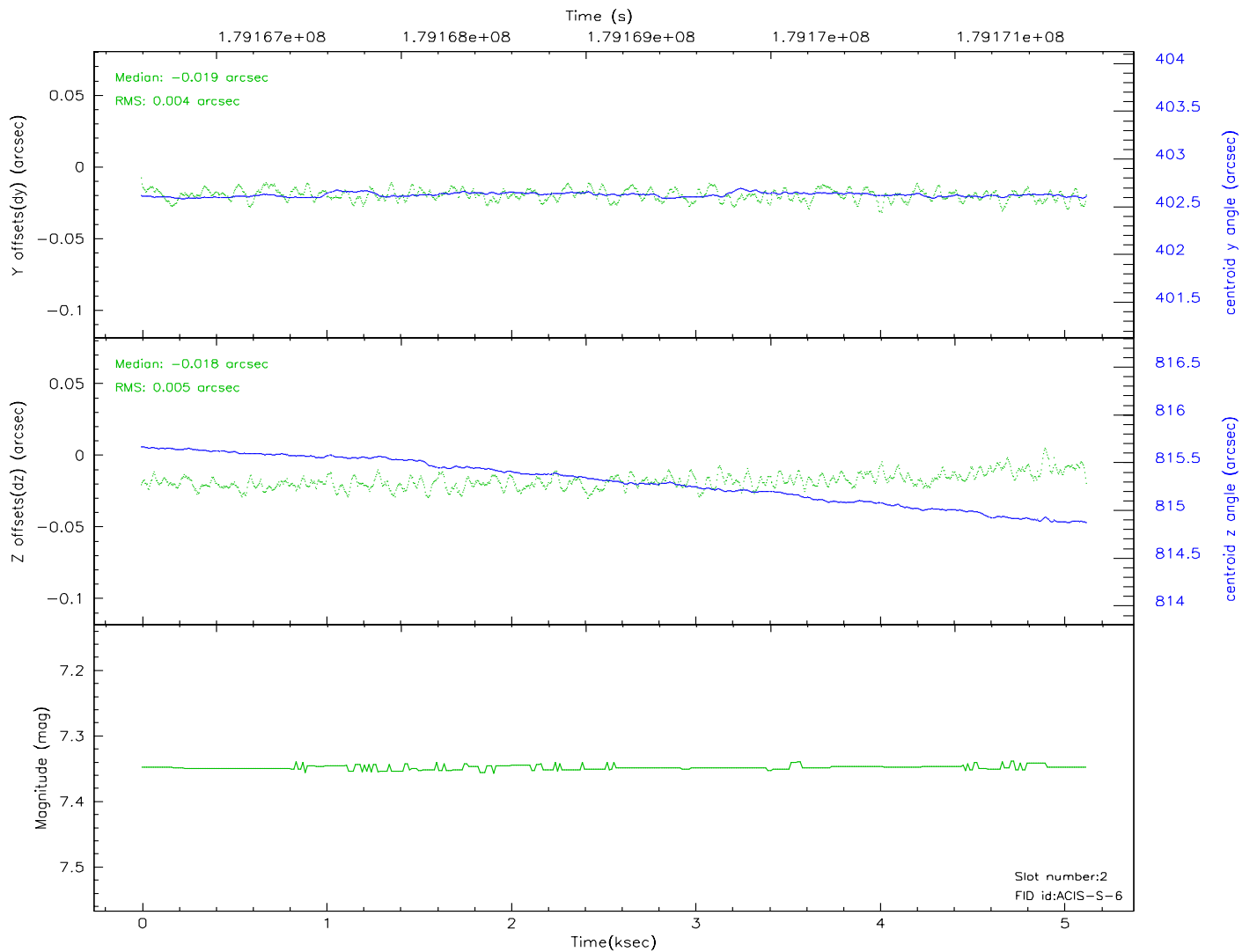
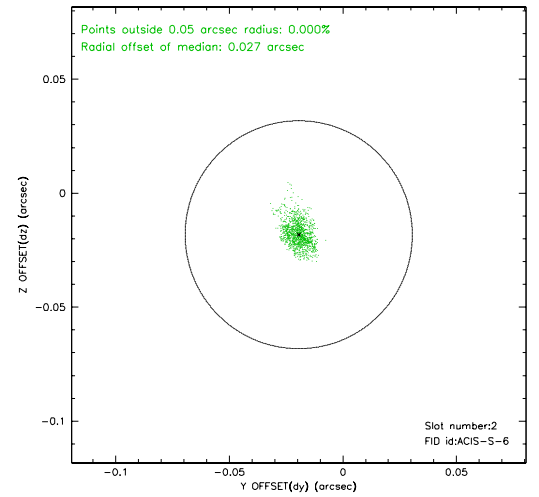
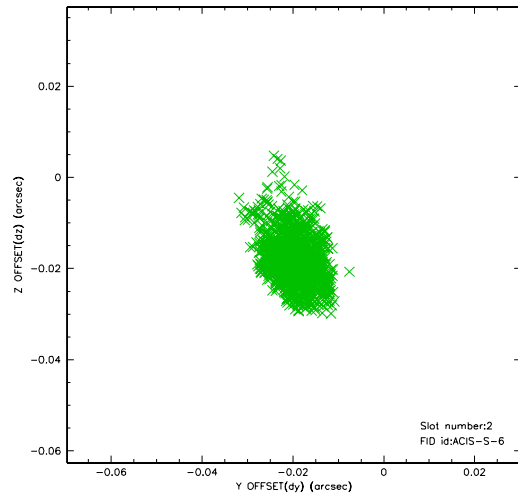
2.5.1 Slot 0



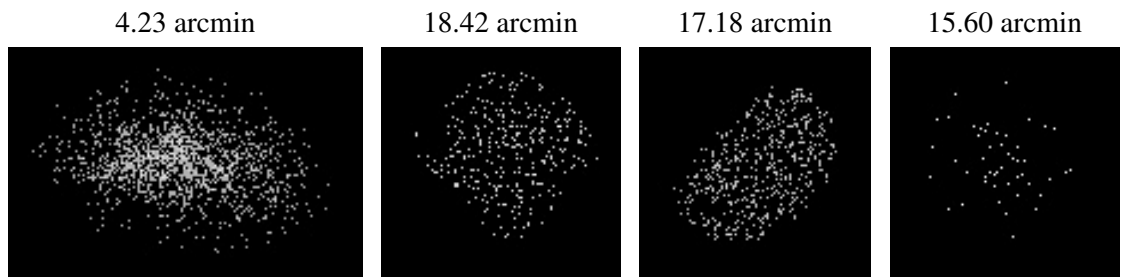
2.5.2 Slot 1



2.5.3 Slot 2



3 Point Sources



A Summary

A.1 Status

V&V Scientist	Jen Lauer
V&V Date (YYYY-MM-DD)	2006.07.06
V&V Edition	1
V&V Disposition and Status	OK
V&V Charge Time	5.125

A.2 Comments

Monitor constraint met.

The ACIS focal plane temperature was above calibration limits for the entire observation.