

V&V Reference Report

L2 ASCDS Version : 7.6.8

Observation 3570 - L2 Version 001
Chandra X-Ray Center

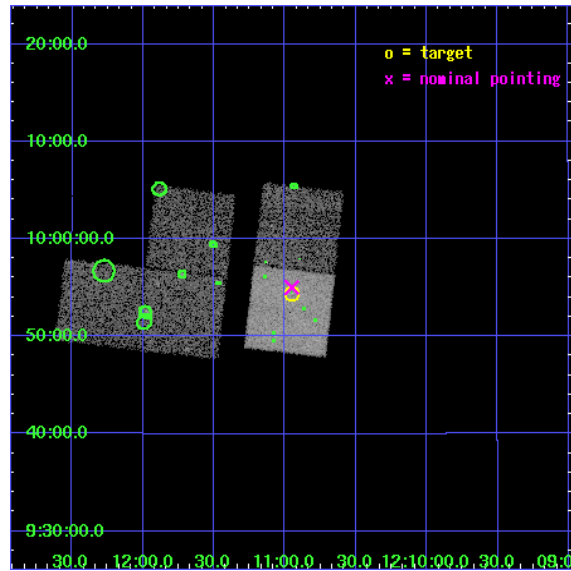
L2 Processing Date : Jul 22 2006

Contents

1	Front	2
2	OBI	3
2.1	OBI	3
2.1.1	Images	3
2.1.2	Bias	3
2.1.3	Parameters	4
2.1.4	Events	4
2.2	Compared Parameters	5
2.3	Aspect	6
2.4	Star Slots	9
2.4.1	Slot 3	9
2.4.2	Slot 4	10
2.4.3	Slot 5	11
2.4.4	Slot 6	12
2.4.5	Slot 7	13
2.5	FID Slots	14
2.5.1	Slot 0	14
2.5.2	Slot 1	15
2.5.3	Slot 2	16
3	Point Sources	17
A	Summary	18
A.1	Status	18
A.2	Comments	18

1 Front

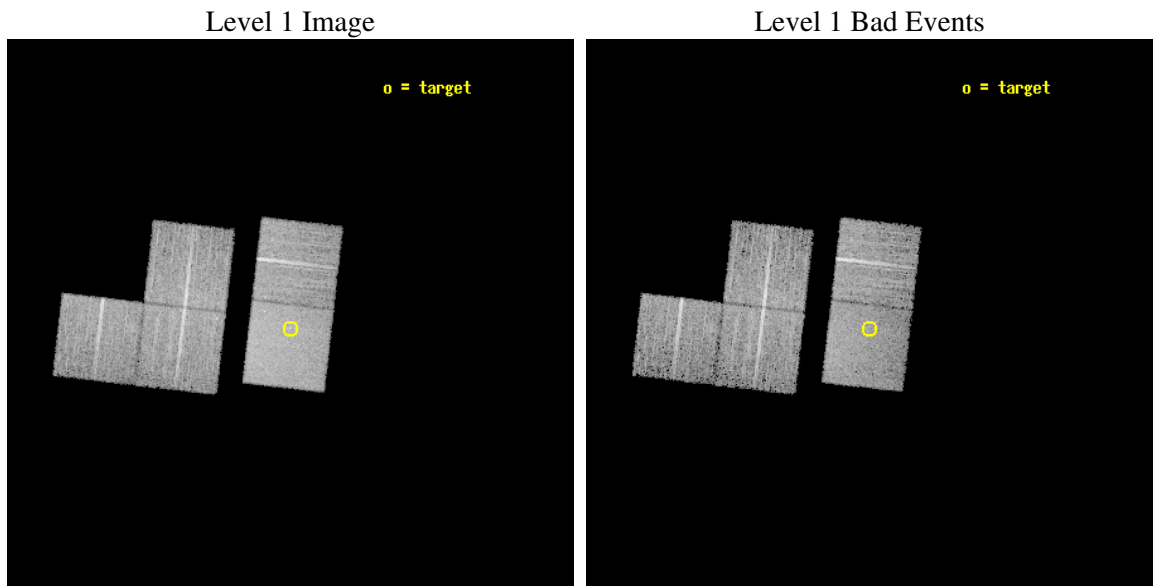
seq_num	700632
obs_id	3570
title	ALTERNATE-A STUDY OF QUASAR EVOLUTION WITH THE AID OF LENSING
observer	Professor Gordon Garmire
object	Q1208+1011
dtcycle	0
cycle	P
ra_targ	182.737083
dec_targ	9.907444
ra_nom	182.7376525392
dec_nom	9.9171143609425
roll_nom	96.585049411027
revision	2
ontime	10105.999980569
livetime	9973.9576508938
ontime1	10102.859000325
ontime2	10096.577009976
ontime3	10105.999980569
ontime6	10105.999980569
ontime7	10105.999980569
l2events	58730



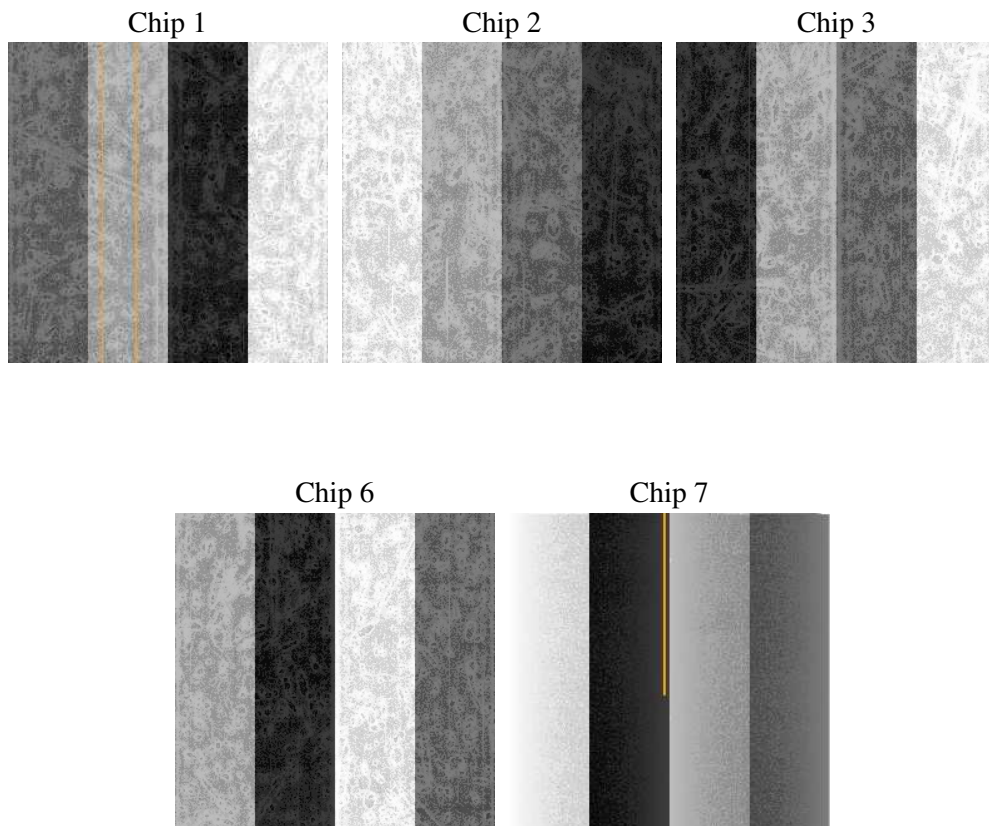
2 OBI

2.1 OBI

2.1.1 Images



2.1.2 Bias



2.1.3 Parameters

obi_num	1
ascdsver	7.6.8
caldsver	3.2.2
date	2006-07-22T11:06:38
revision	2

sched_exp_time	10000.000000
ontime	10110.911735326
ontime1	10107.770735145
ontime2	10101.488744795
ontime3	10110.911715388
ontime6	10110.911715388
ontime7	10110.911735326
llevents	342629

2.1.4 Events

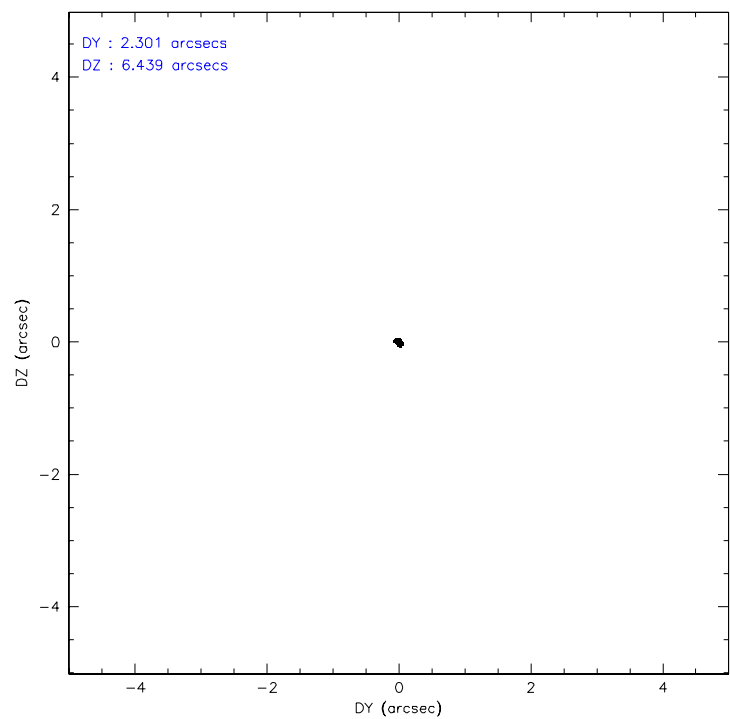
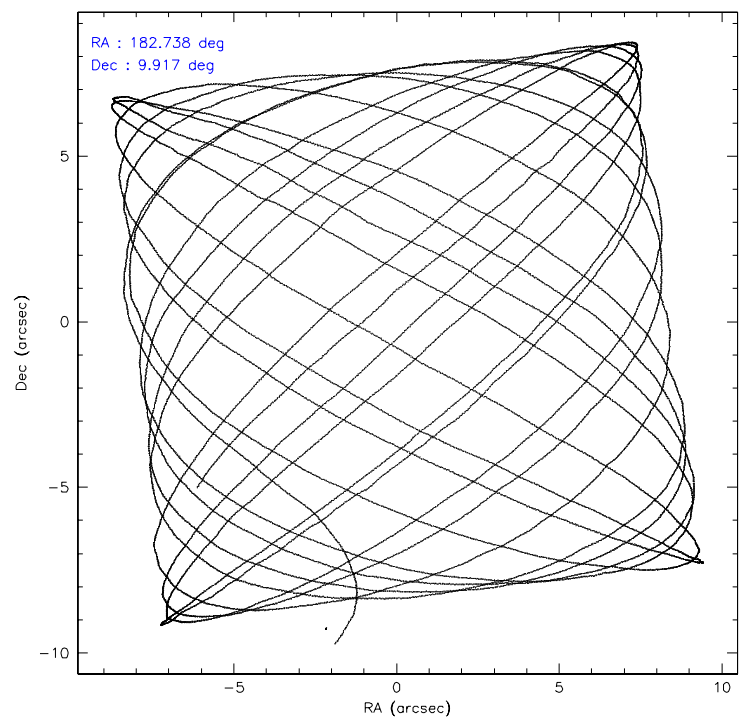
	ccd 1	ccd 2	ccd 3	ccd 6	ccd 7
level 1 events	59806	66064	64031	66677	86051
rejected events	51882	58700	56137	58893	53422
rejected %	86%	88%	87%	88%	62%

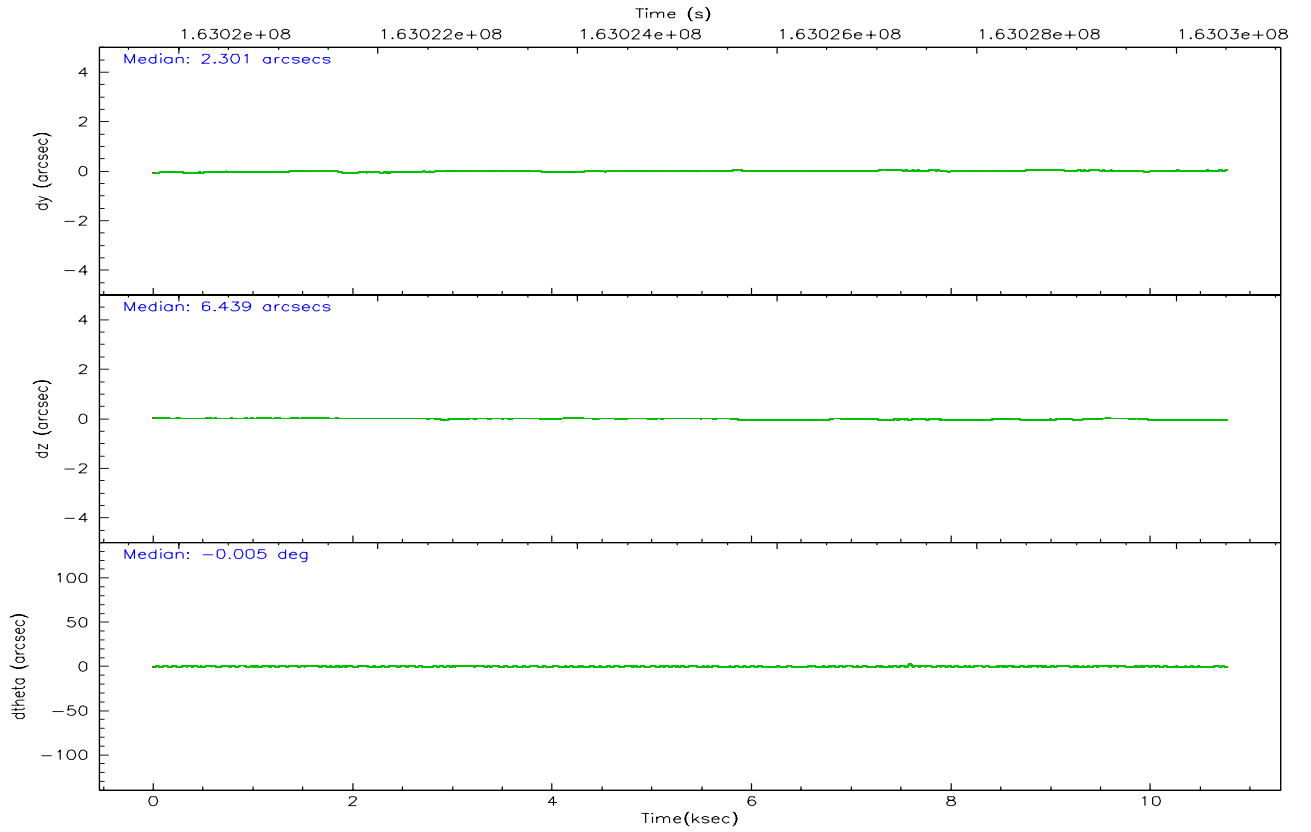
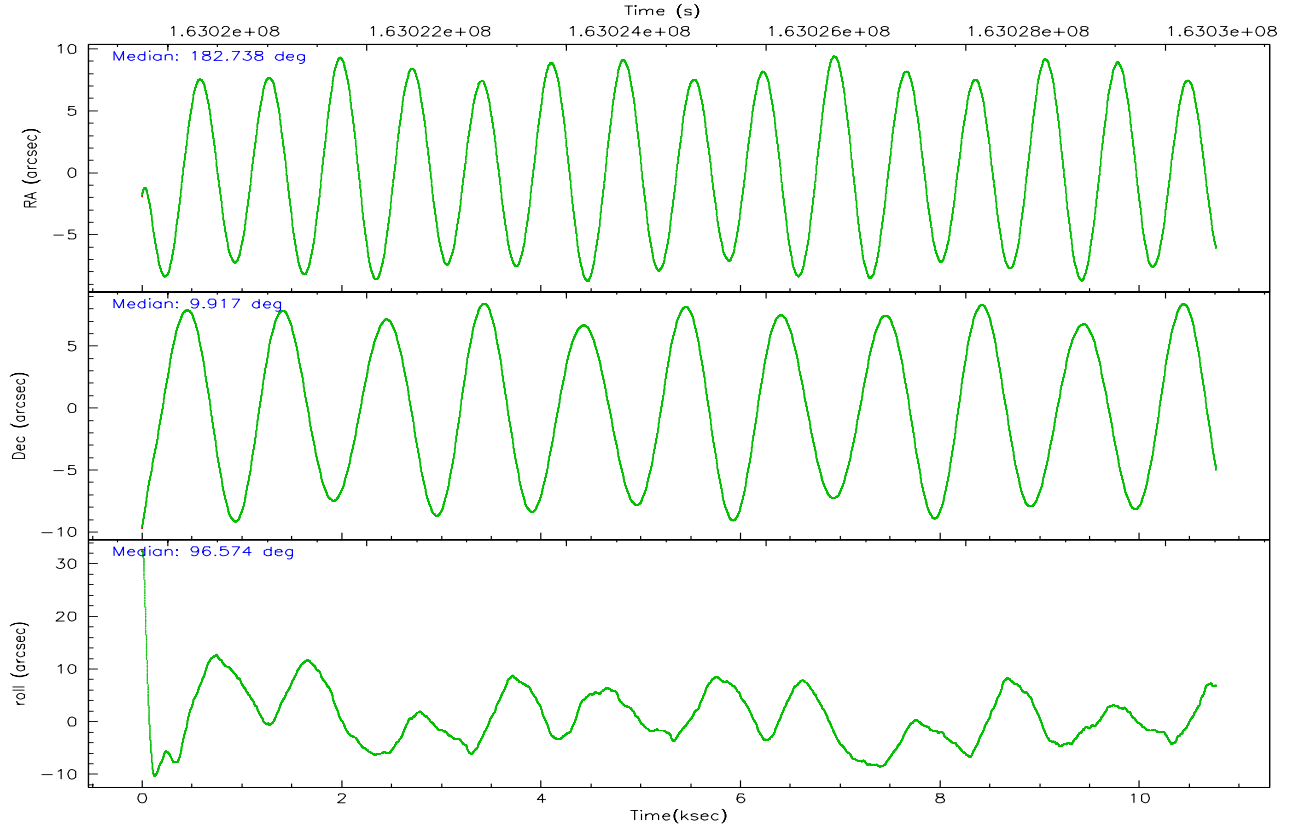
	ccd 1	ccd 2	ccd 3	ccd 6	ccd 7
grade 0 events	3094	3248	3583	3107	1951
	5%	4%	5%	4%	2%
grade 1 events	30	42	33	36	44
	0%	0%	0%	0%	0%
grade 2 events	1663	1476	1490	1588	8115
	2%	2%	2%	2%	9%
grade 3 events	853	723	752	763	1728
	1%	1%	1%	1%	2%
grade 4 events	759	686	733	795	1693
	1%	1%	1%	1%	1%
grade 5 events	2473	2448	2765	2947	5587
	4%	3%	4%	4%	6%
grade 6 events	1560	1232	1338	1540	19153
	2%	1%	2%	2%	22%
grade 7 events	49374	56209	53337	55901	47780
	82%	85%	83%	83%	55%

2.2 Compared Parameters

Parameter	Planned	Actual	Parameter	Planned	Actual
Instrument	ACIS	ACIS	Obspar format version number	6	6
Detector	ACIS-12367	ACIS-12367	Obspar file type	PREDICTED	ACTUAL
Grating	NONE	NONE	Obspar update status	NONE	UPDATED
Data mode	VFAINT	VFAINT	On-chip summing requested	N	N
Observation mode	POINTING	POINTING	Subarray requested	NONE	NONE
Pointing RA	182.754459	182.7376525392019	Alternating exposures requested	N	N
Pointing Dec	9.895452	9.917114360942465	Primary exposure time	0.000000	3.1
Pointing Roll	96.425479	96.58504941102741			
SIM focus pos (mm)	-0.684267	-0.6828225247311905			
SIM defocus (mm)	0	0.001444936568705701			
SIM translation stage pos (mm)	-190.132523	-190.1425803651734			
SIM translation stage offset (mm)	0	0.01005778216563158			
Observation start time	163020513.184000	163019260.91256			
Observation start date	2003-03-02T19:27:29	2003-03-02T19:07:40			
Observation end time	163030513.184000	163031310.30057			
Observation end date	2003-03-02T22:14:09	2003-03-02T22:28:30			
Read mode	TIMED	TIMED			

2.3 Aspect



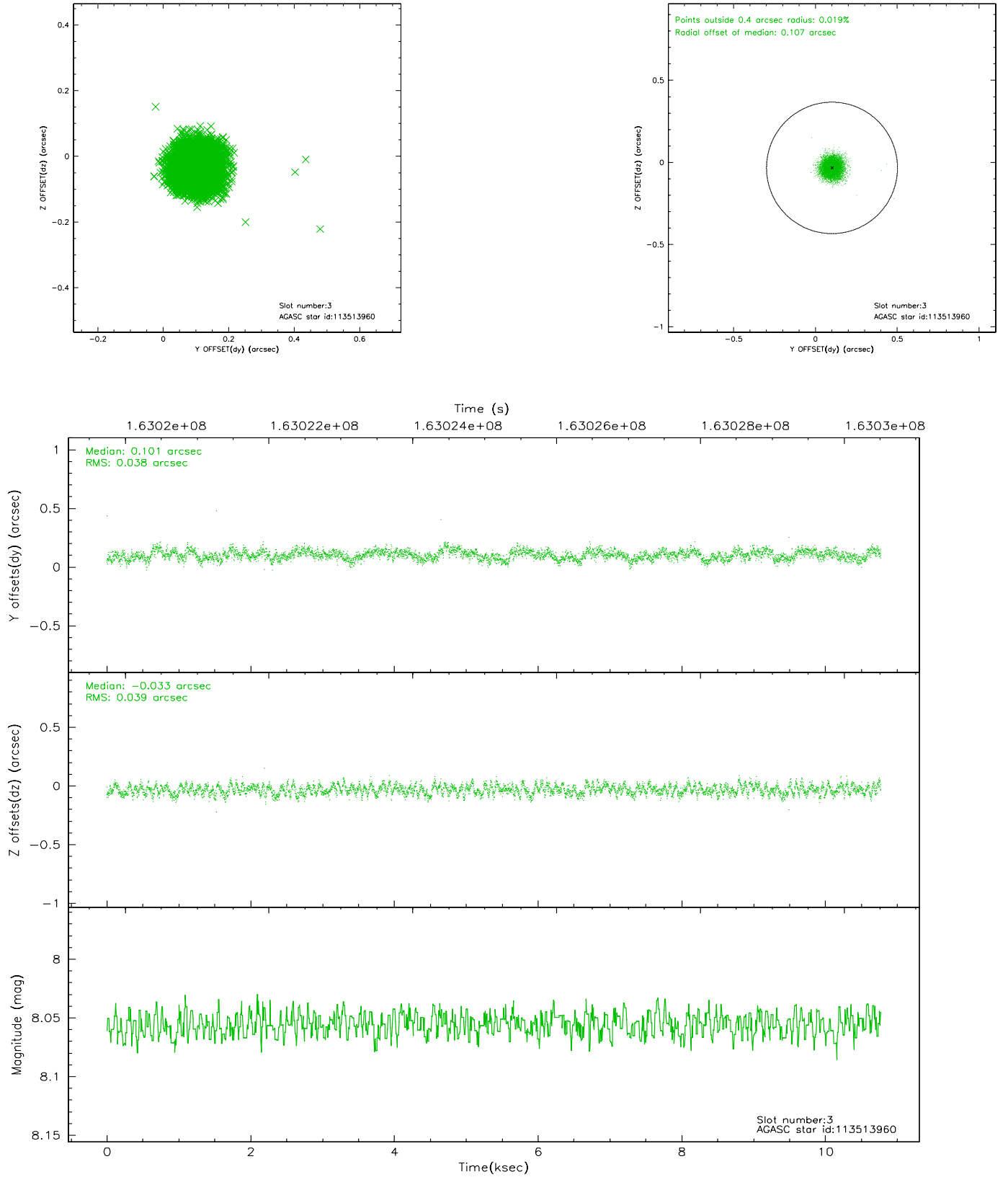


Slot Statistics

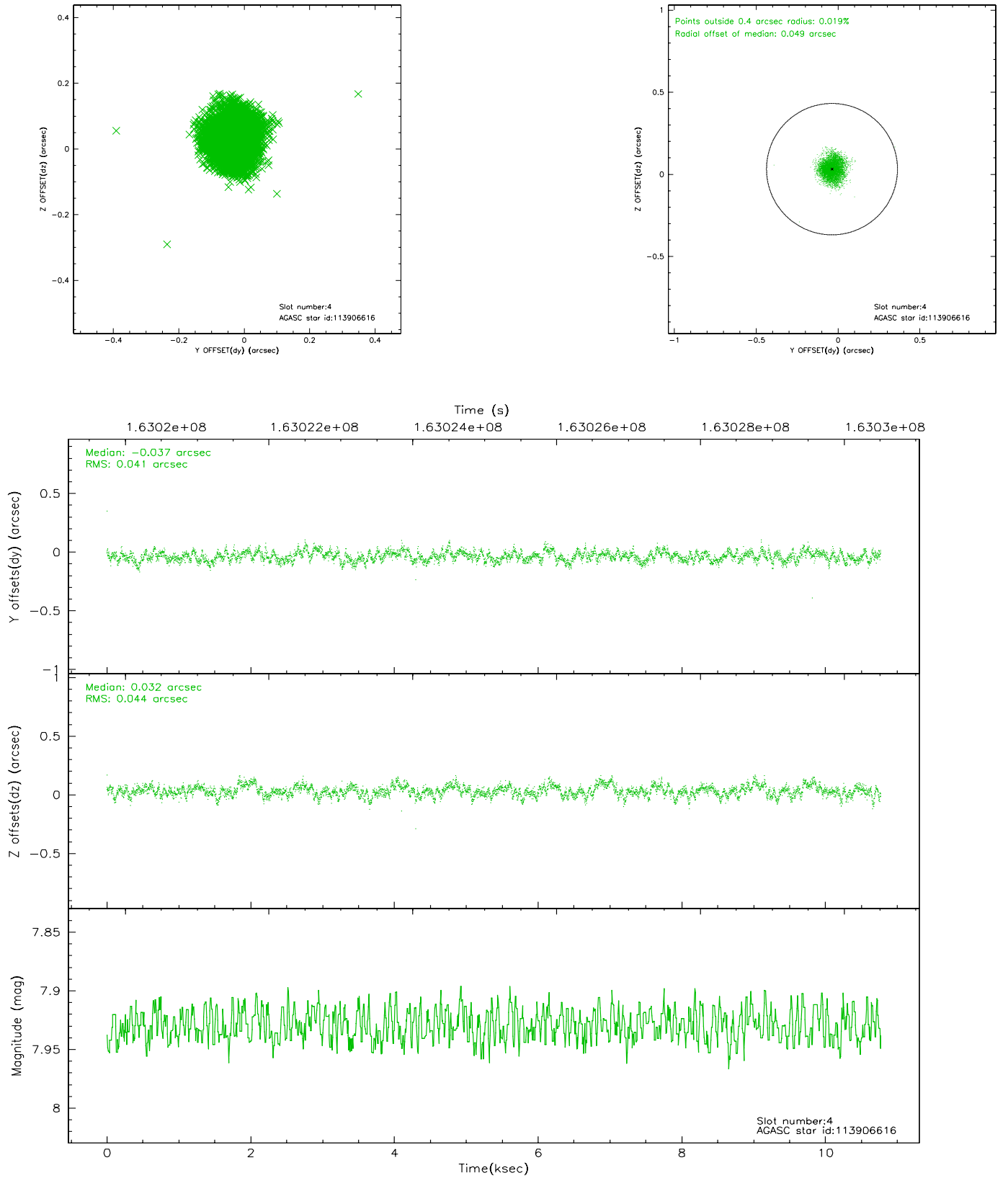
slot	status	id	mag	n_pts	med_dy	med_dz	dr1	dr2	ra	dec	mean_y	mean_z
0	FID	ACIS-S-2	7.12	2628	-0.035	0.022	0.007	0.012	0.000000	0.000000	-754.92	-1727.52
1	FID	ACIS-S-4	7.21	2628	-0.041	0.011	0.005	0.009	0.000000	0.000000	2158.10	180.51
2	FID	ACIS-S-5	7.24	2628	0.046	-0.025	0.006	0.010	0.000000	0.000000	-1807.10	174.61
3	GUIDE	113513960	8.06	5254	0.101	-0.033	0.058	0.089	182.997366	9.307108	-2200.90	-620.72
4	GUIDE	113906616	7.93	5255	-0.037	0.032	0.064	0.101	183.239714	10.037718	316.30	-1767.17
5	GUIDE	113909720	7.53	5253	-0.047	0.116	0.072	0.116	183.372953	10.041634	279.11	-2237.75
6	GUIDE	113909952	9.83	5210	-0.075	-0.155	0.131	0.208	182.703120	10.082649	690.01	105.21
7	GUIDE	113511680	8.96	5252	0.050	0.049	0.090	0.140	183.439930	9.742834	-815.16	-2355.49

2.4 Star Slots

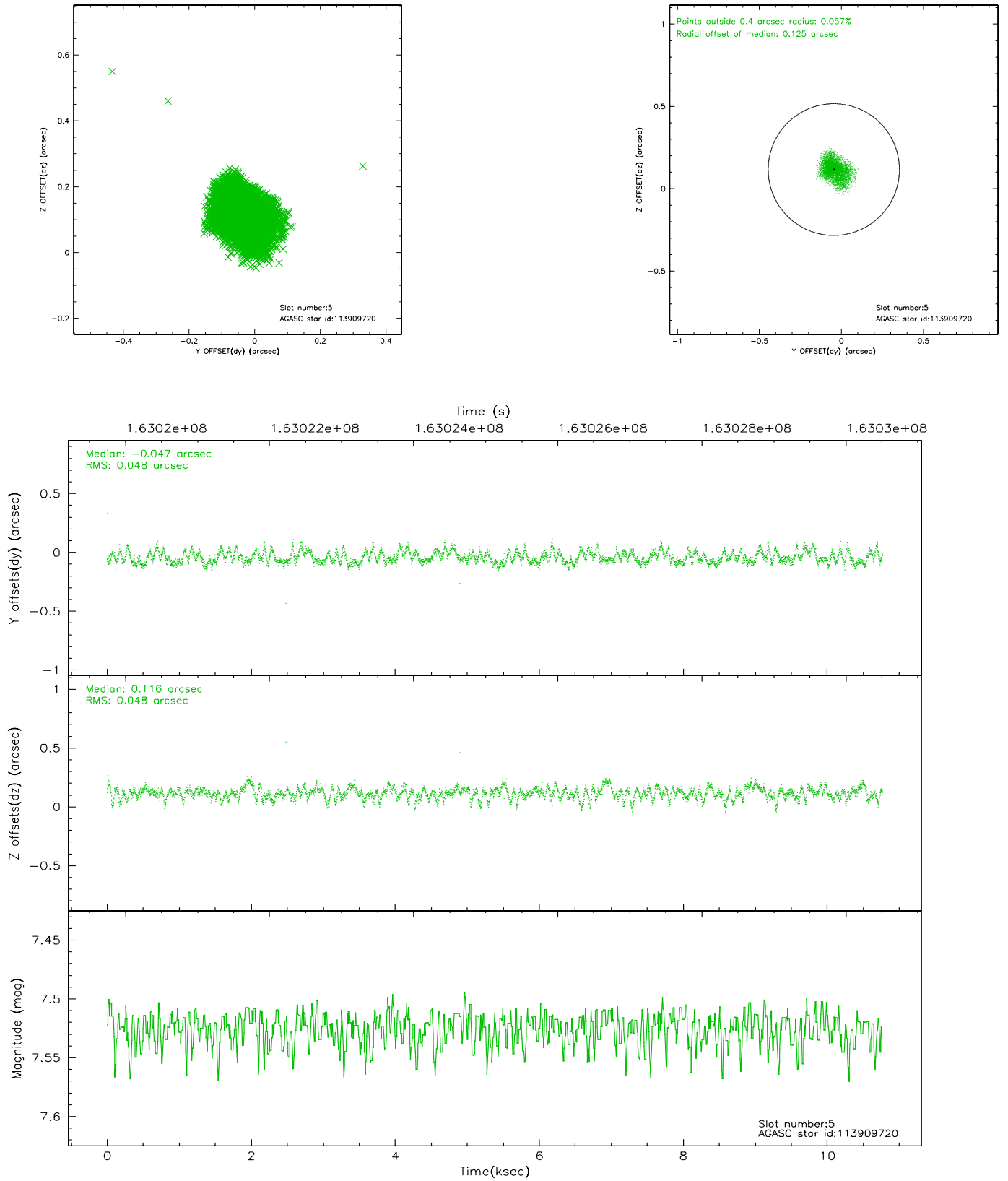
2.4.1 Slot 3



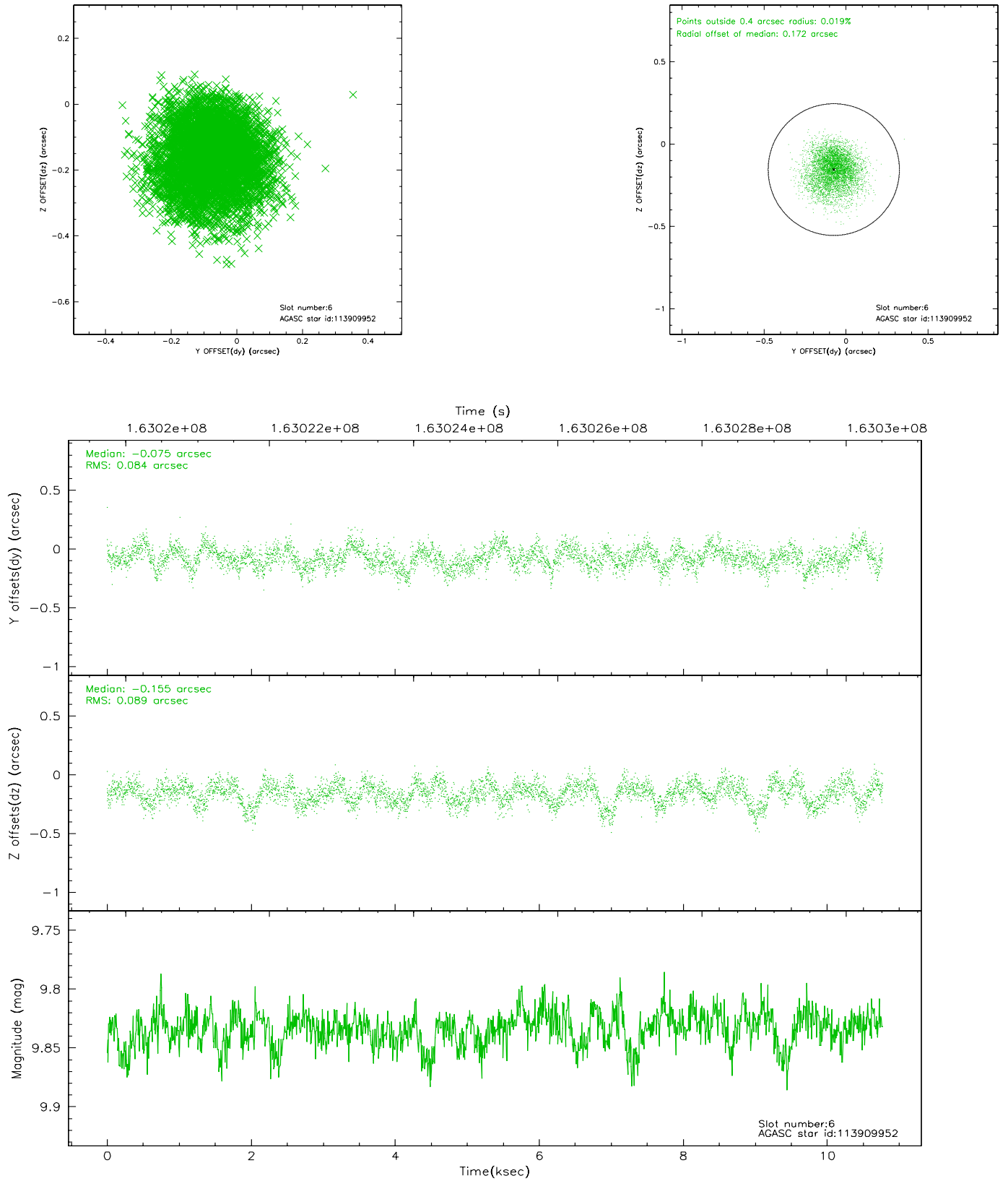
2.4.2 Slot 4



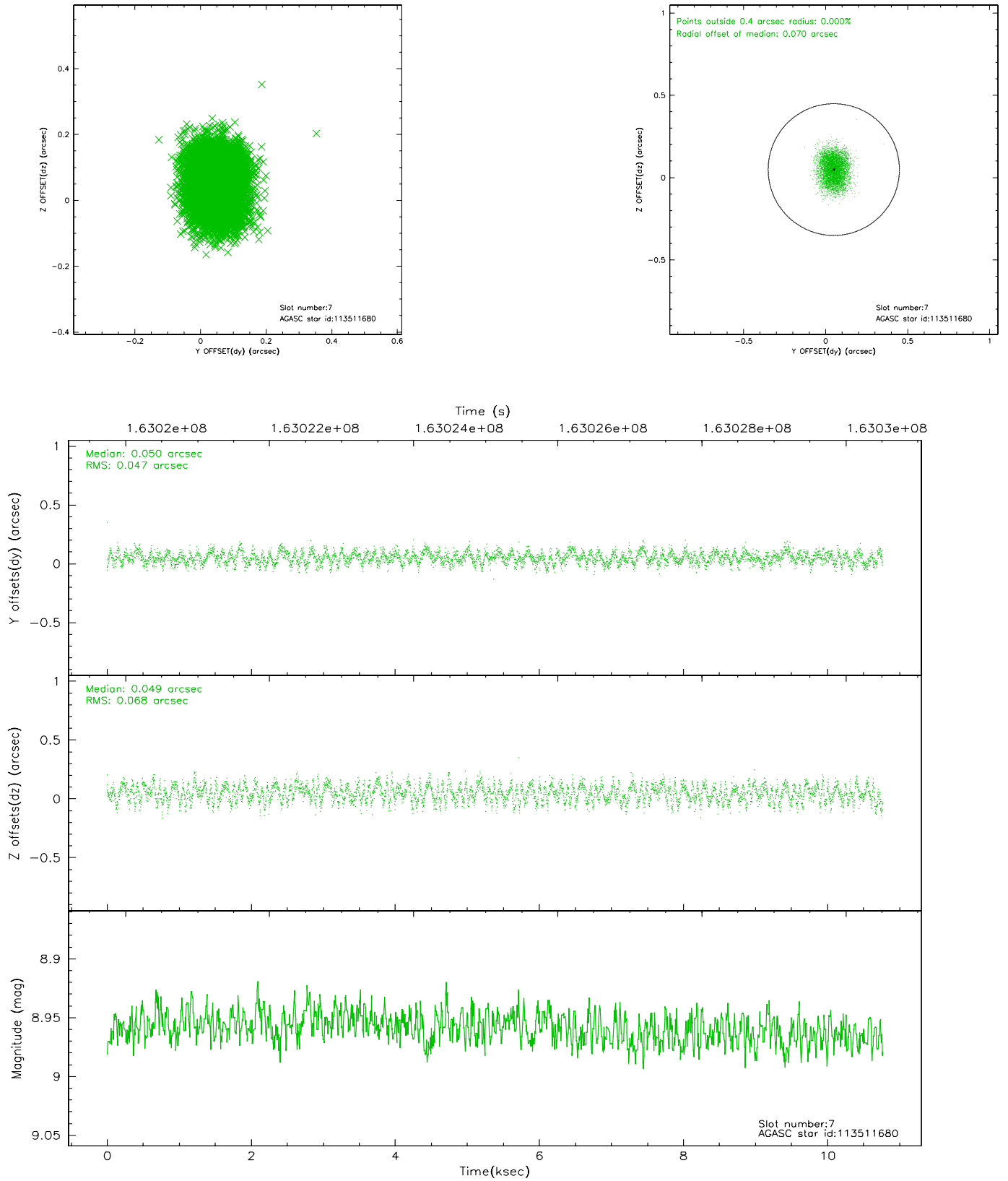
2.4.3 Slot 5



2.4.4 Slot 6

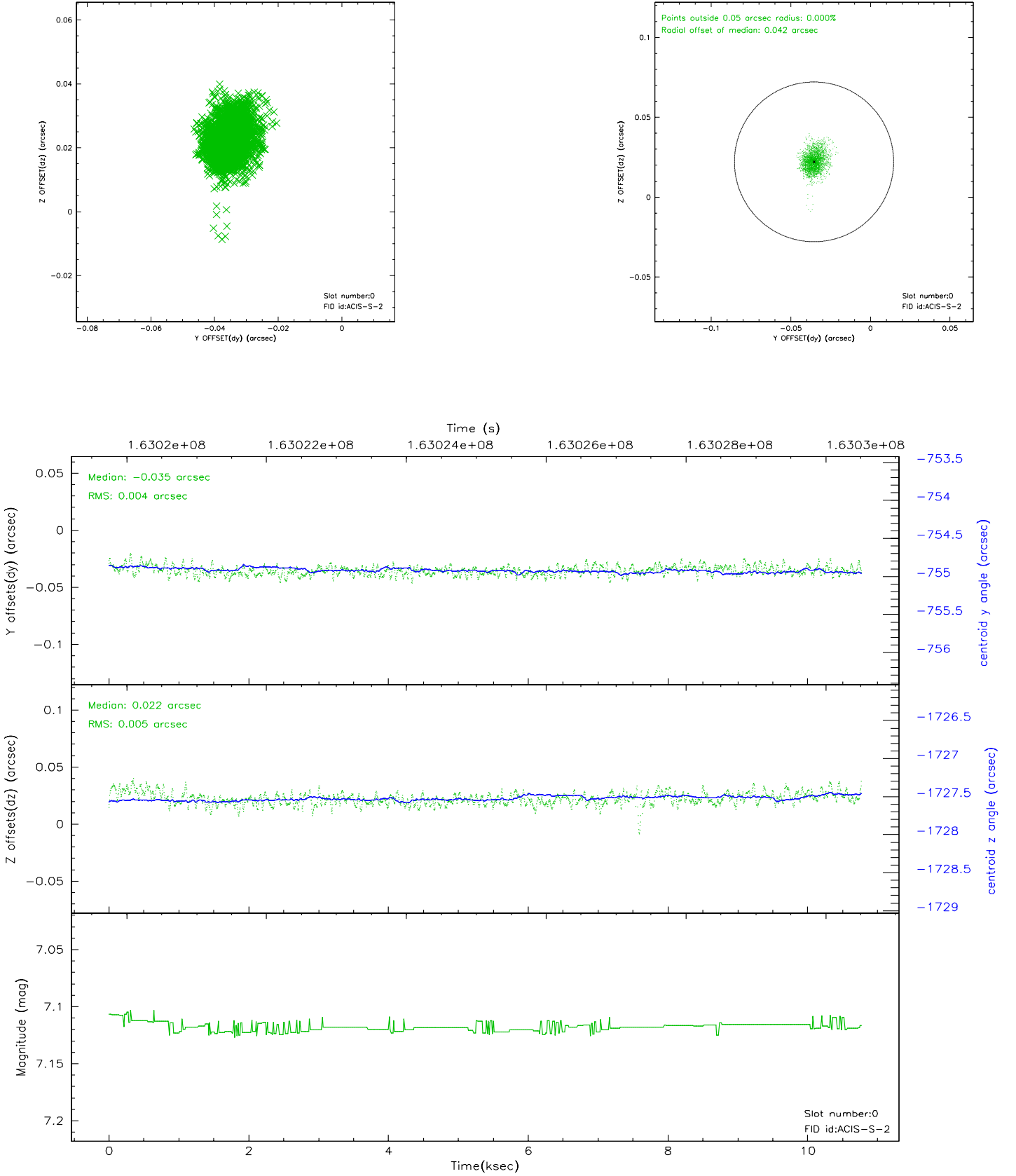


2.4.5 Slot 7

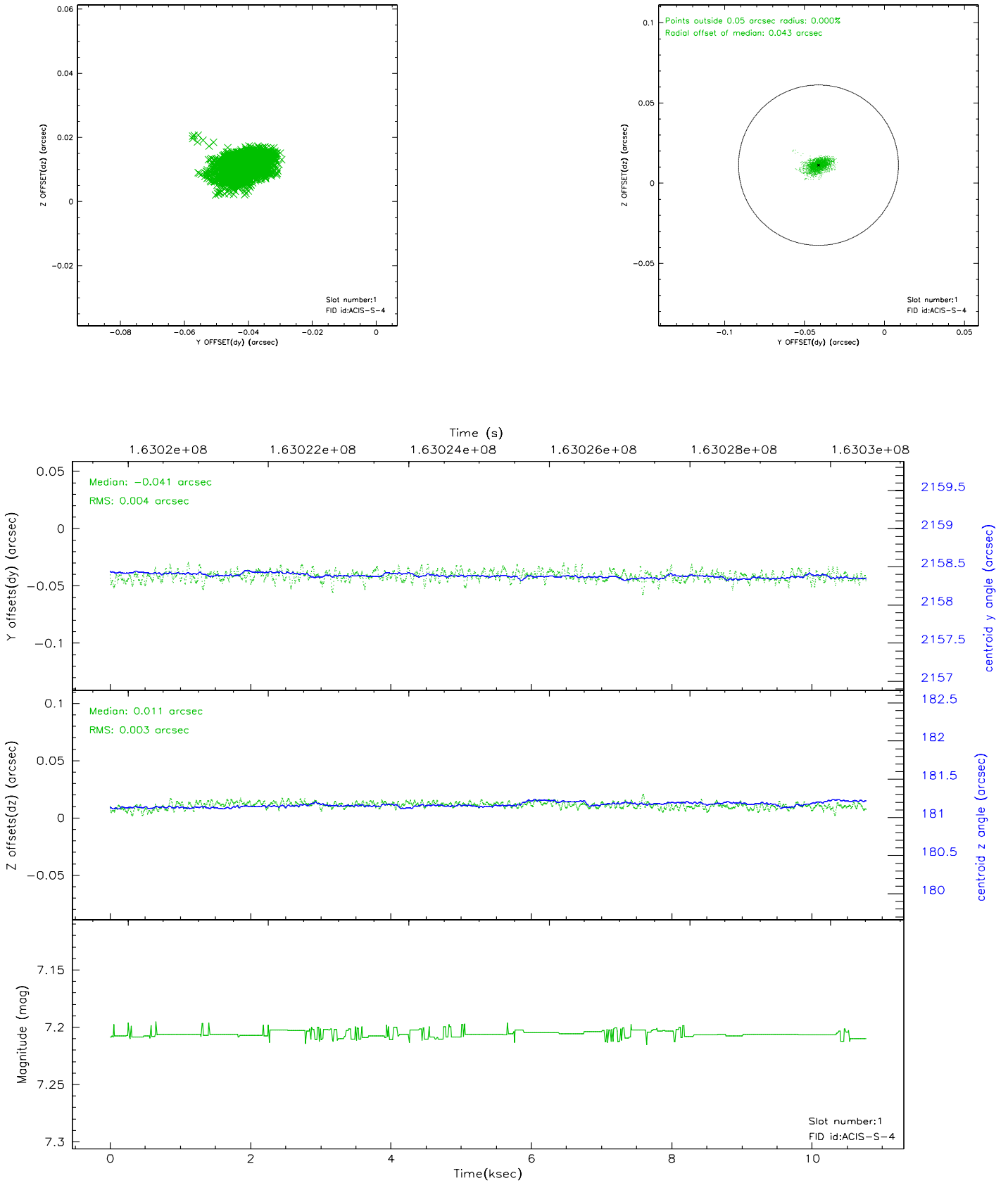


2.5 FID Slots

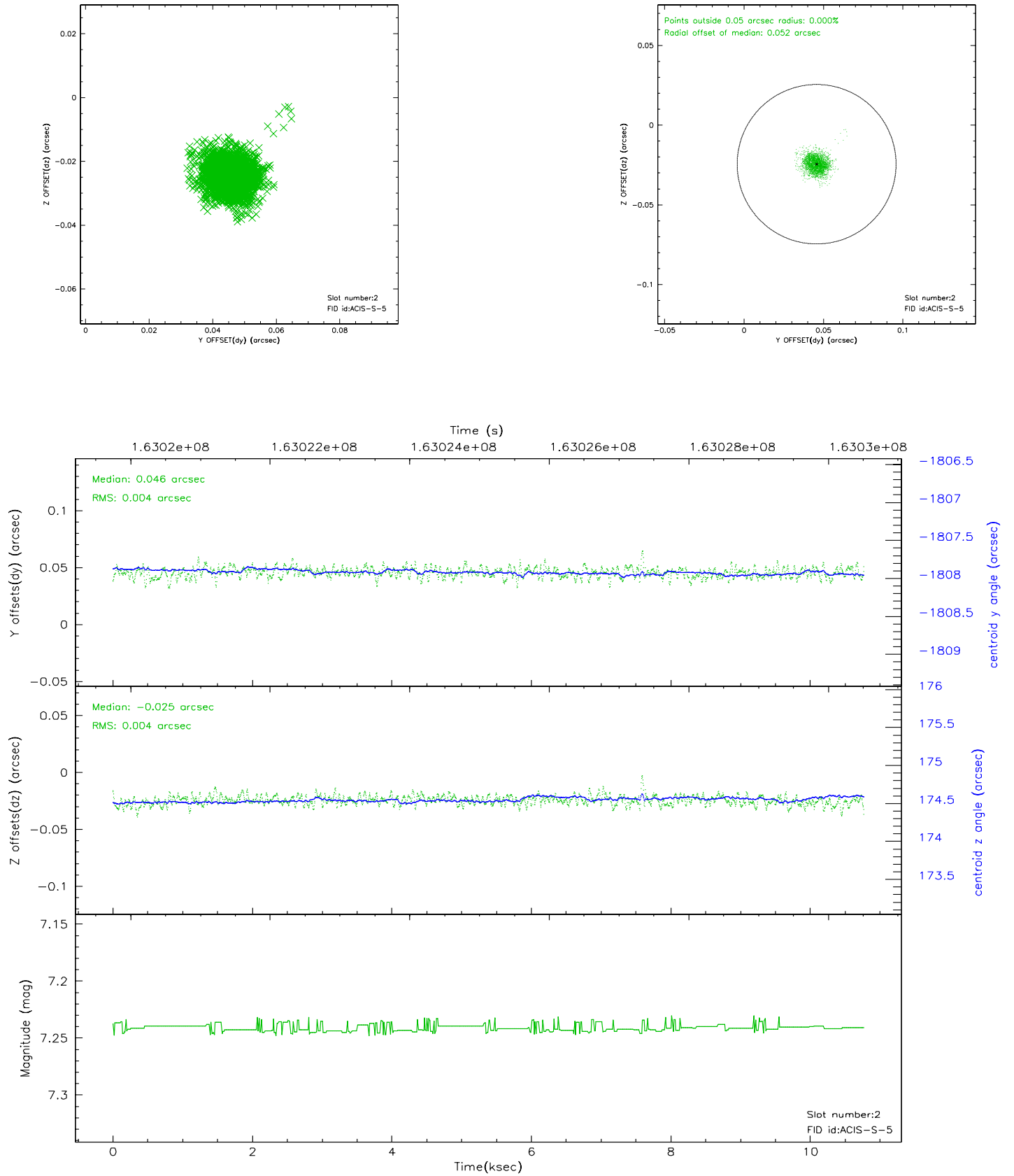
2.5.1 Slot 0



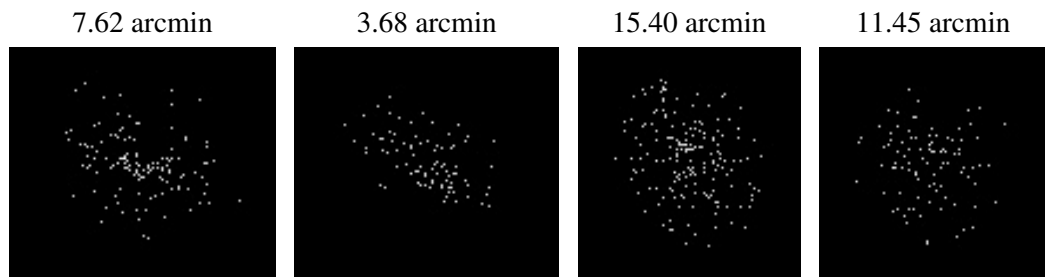
2.5.2 Slot 1



2.5.3 Slot 2



3 Point Sources



A Summary

A.1 Status

V&V Scientist	Beth Sundheim
V&V Date (YYYY-MM-DD)	2006.07.23
V&V Edition	1
V&V Disposition and Status	OK
V&V Charge Time	10.105

A.2 Comments