

V&V Reference Report

L2 ASCDS Version : 7.6.8

Observation 3540 - L2 Version 001
Chandra X-Ray Center

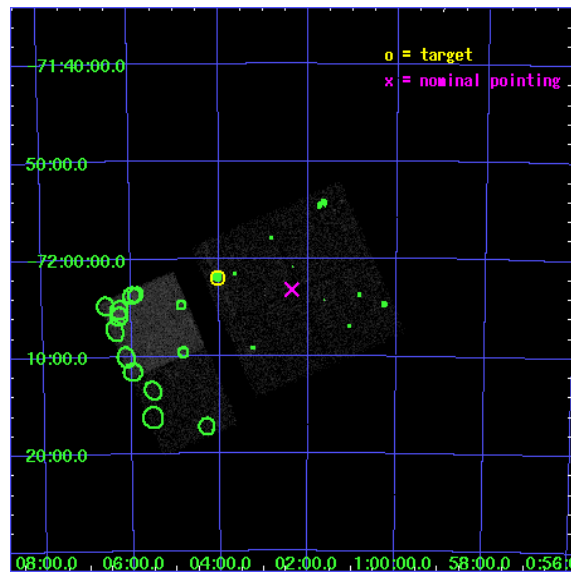
L2 Processing Date : Jul 20 2006

Contents

1	Front	2
2	OBI	3
2.1	OBI	3
2.1.1	Images	3
2.1.2	Bias	3
2.1.3	Parameters	4
2.1.4	Events	4
2.2	Compared Parameters	5
2.3	Aspect	6
2.4	Star Slots	9
2.4.1	Slot 3	9
2.4.2	Slot 4	10
2.4.3	Slot 5	11
2.4.4	Slot 6	12
2.4.5	Slot 7	13
2.5	FID Slots	14
2.5.1	Slot 0	14
2.5.2	Slot 1	15
2.5.3	Slot 2	16
3	Point Sources	17
A	Summary	18
A.1	Status	18
A.2	Comments	18

1 Front

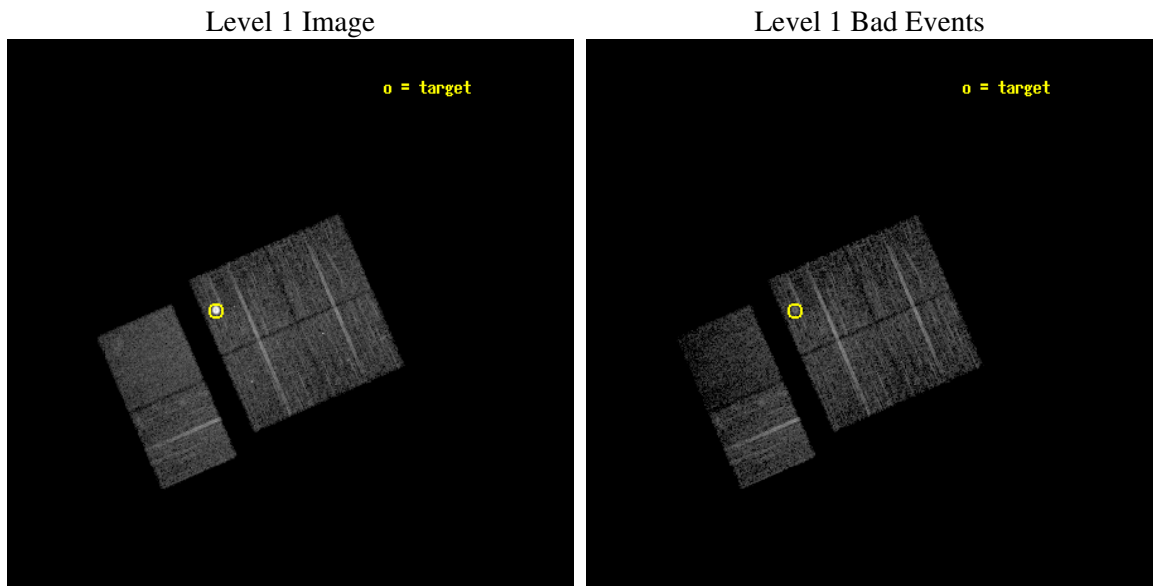
seq_num	590295
obs_id	3540
title	AO4A ACIS-I CALIBRATION OBSERVATIONS OF E0102-72
observer	Dr. CXC Calibration
object	E0102-72[I3,-120,-4.0,6.5.0]
dtcycle	0
cycle	P
ra_targ	16.01
dec_targ	-72.032028
ra_nom	15.590602070101
dec_nom	-72.052963649832
roll_nom	246.43200146637
revision	2
ontime	7731.199971199
livetime	7633.302861994
ontime0	7731.199971199
ontime1	7731.199971199
ontime2	7727.9590109587
ontime3	7731.199971199
ontime6	7727.9591304958
ontime7	7731.199971199
l2events	53953



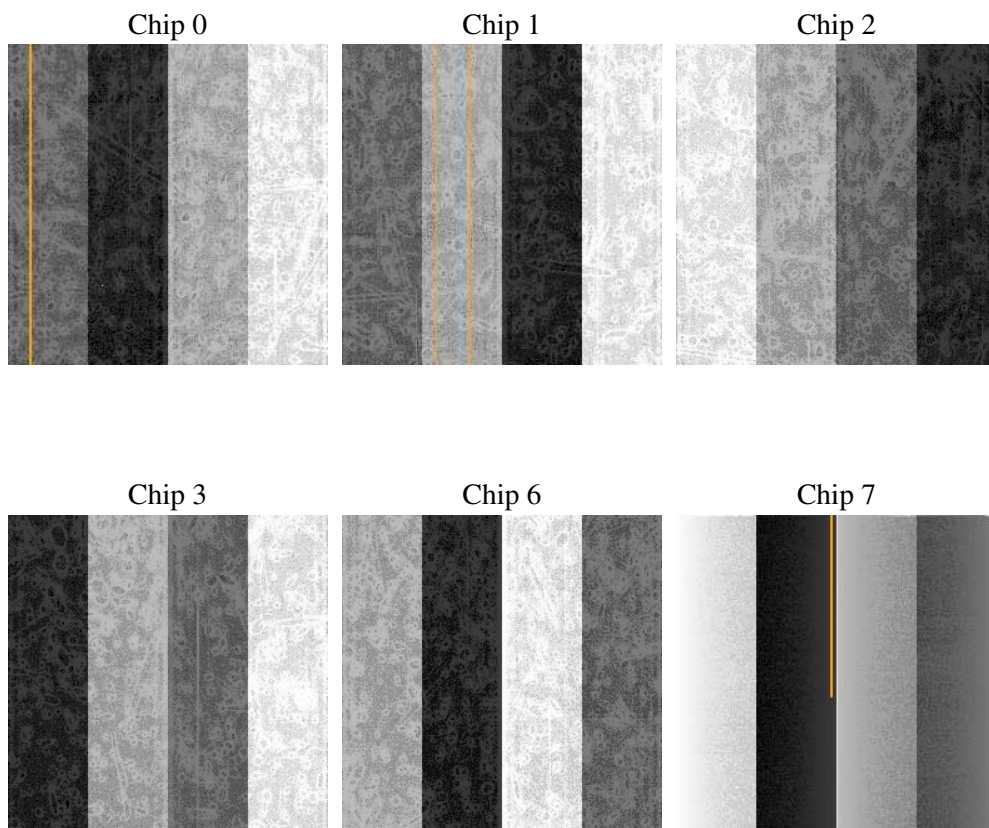
2 OBI

2.1 OBI

2.1.1 Images



2.1.2 Bias



2.1.3 Parameters

obi_num	0
ascdsver	7.6.8
caldbver	3.2.2
date	2006-07-20T16:13:17
revision	2

sched_exp_time	7973.000000
ontime	7736.2669246197
ontime0	7736.266954571
ontime1	7736.2669246197
ontime2	7733.0259943306
ontime3	7736.2669246197
ontime6	7733.0260839164
ontime7	7736.266954571
l1events	241601

2.1.4 Events

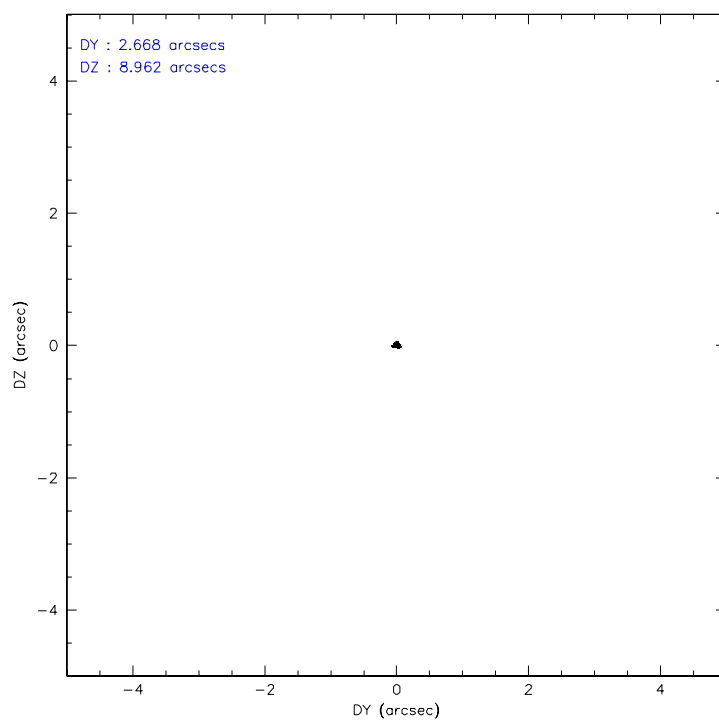
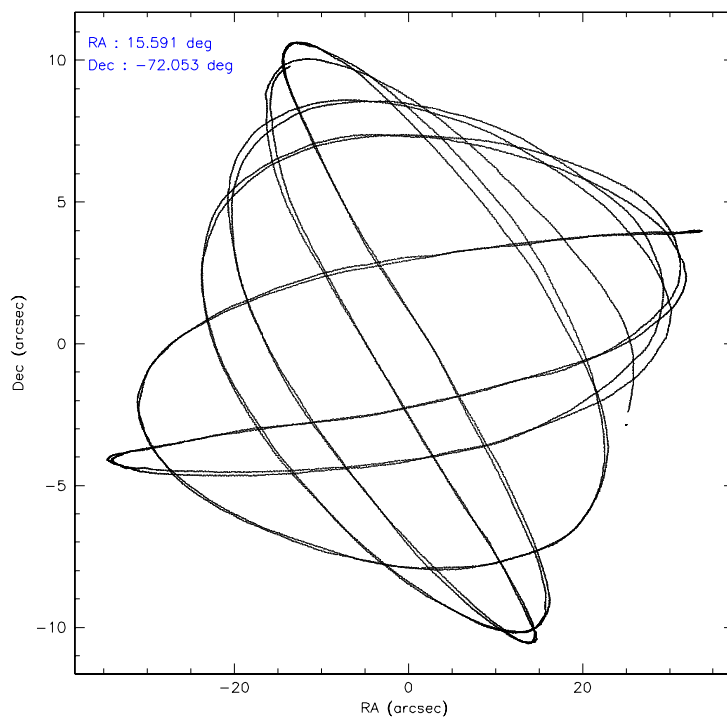
	ccd 0	ccd 1	ccd 2	ccd 3	ccd 6	ccd 7
level 1 events	36503	33789	37642	58958	38625	36084
rejected events	32261	29773	33584	34018	34461	18759
rejected %	88%	88%	89%	57%	89%	51%

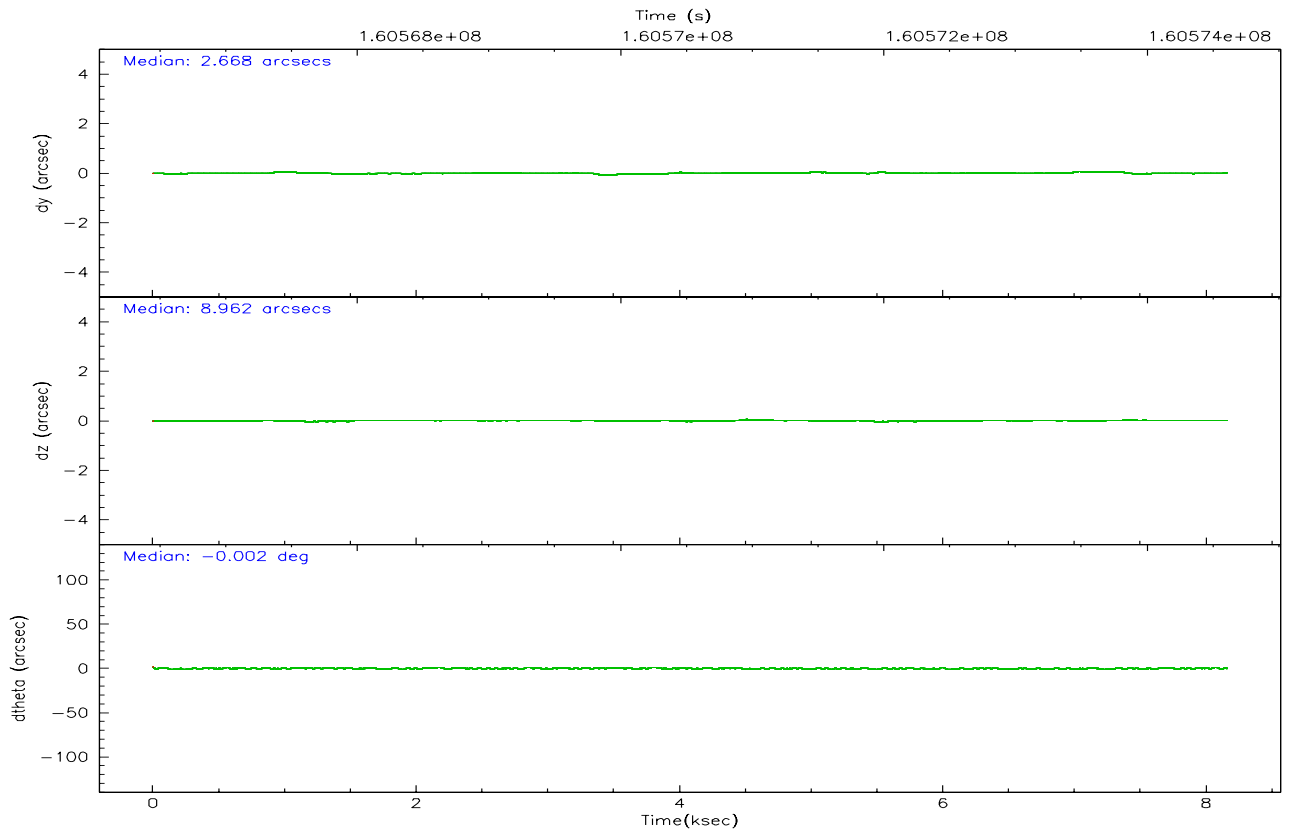
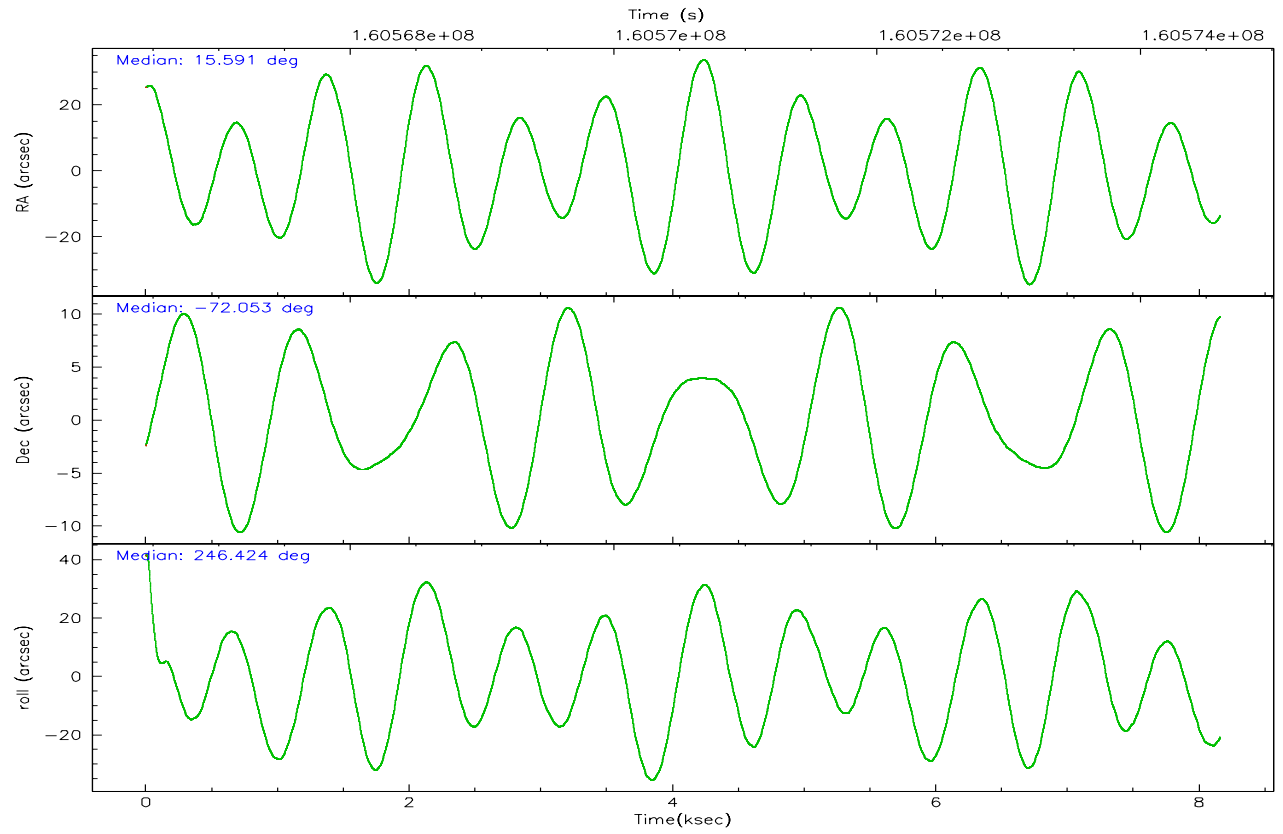
	ccd 0	ccd 1	ccd 2	ccd 3	ccd 6	ccd 7
grade 0 events	1818	1570	1841	20317	1687	1654
	4%	4%	4%	34%	4%	4%
grade 1 events	21	9	23	160	16	21
	0%	0%	0%	0%	0%	0%
grade 2 events	913	816	846	2334	836	4428
	2%	2%	2%	3%	2%	12%
grade 3 events	452	431	388	782	457	1255
	1%	1%	1%	1%	1%	3%
grade 4 events	375	463	415	762	457	1144
	1%	1%	1%	1%	1%	3%
grade 5 events	1000	1121	940	1239	1236	2780
	2%	3%	2%	2%	3%	7%
grade 6 events	684	737	574	770	730	8856
	1%	2%	1%	1%	1%	24%
grade 7 events	31240	28642	32615	32594	33206	15946
	85%	84%	86%	55%	85%	44%

2.2 Compared Parameters

Parameter	Planned	Actual	Parameter	Planned	Actual
Instrument	ACIS	ACIS	Obspar format version number	6	6
Detector	ACIS-012367	ACIS-012367	Obspar file type	PREDICTED	ACTUAL
Grating	NONE	NONE	Obspar update status	NONE	UPDATED
Data mode	VFAINT	VFAINT	On-chip summing requested	N	N
Observation mode	POINTING	POINTING	Subarray requested	NONE	NONE
Pointing RA	15.580303	15.59060207010052	Alternating exposures requested	N	N
Pointing Dec	-72.025810	-72.05296364983182	Primary exposure time	0.000000	3.2
Pointing Roll	246.213460	246.4320014663738			
Window start time	158976064.184000	158976064.184000			
Window stop time	161654464.184000	161654464.184000			
SIM focus pos (mm)	-0.782348	-0.7809083437167272			
SIM defocus (mm)	0	0.001439871863259334			
SIM translation stage pos (mm)	-233.592463	-233.5874344608287			
SIM translation stage offset (mm)	0	-0.005018542100998502			
Observation start time	160566637.184000	160566261.047			
Observation start date	2003-02-02T09:49:33	2003-02-02T09:44:21			
Observation end time	160574610.184000	160574743.94735			
Observation end date	2003-02-02T12:02:26	2003-02-02T12:05:43			
Read mode	TIMED	TIMED			

2.3 Aspect



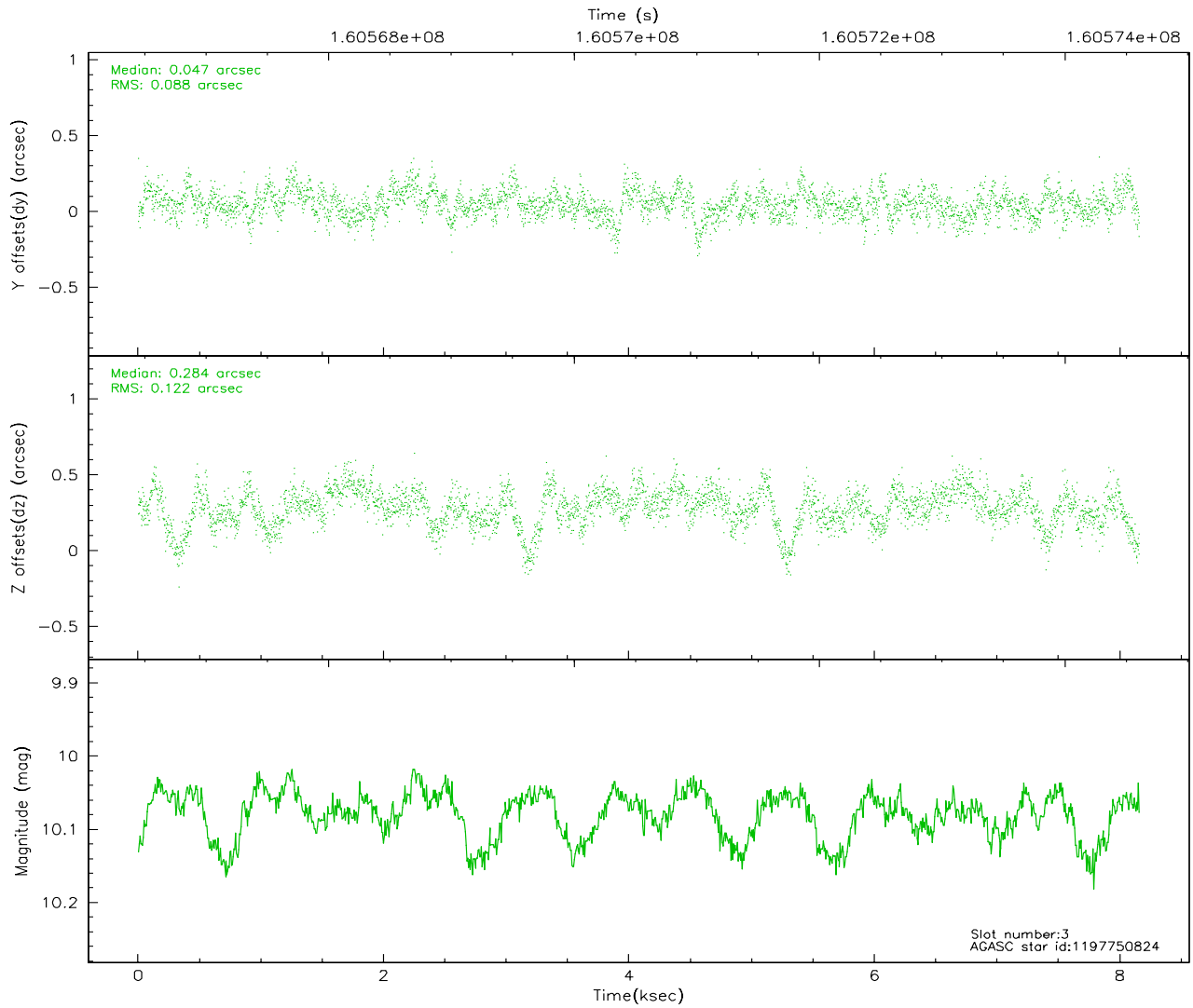
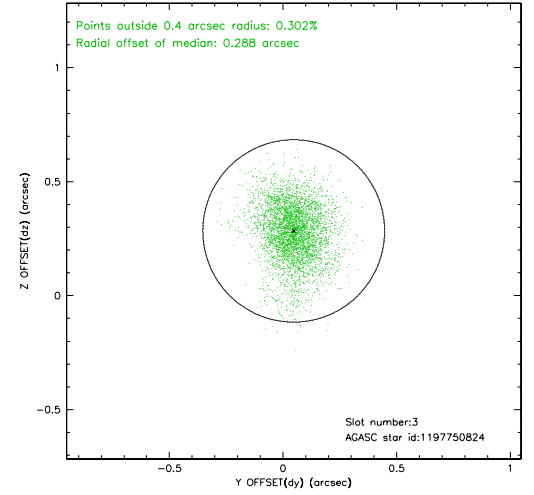
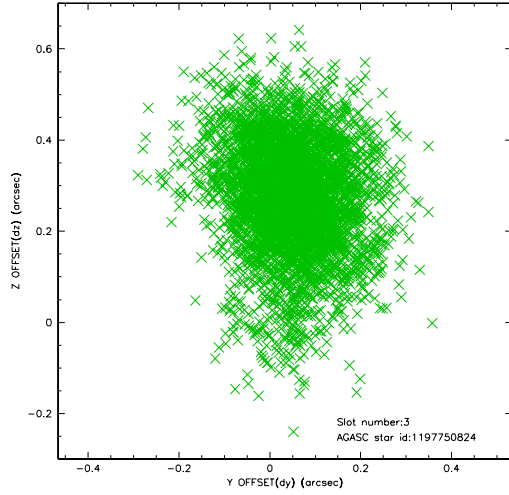


Slot Statistics

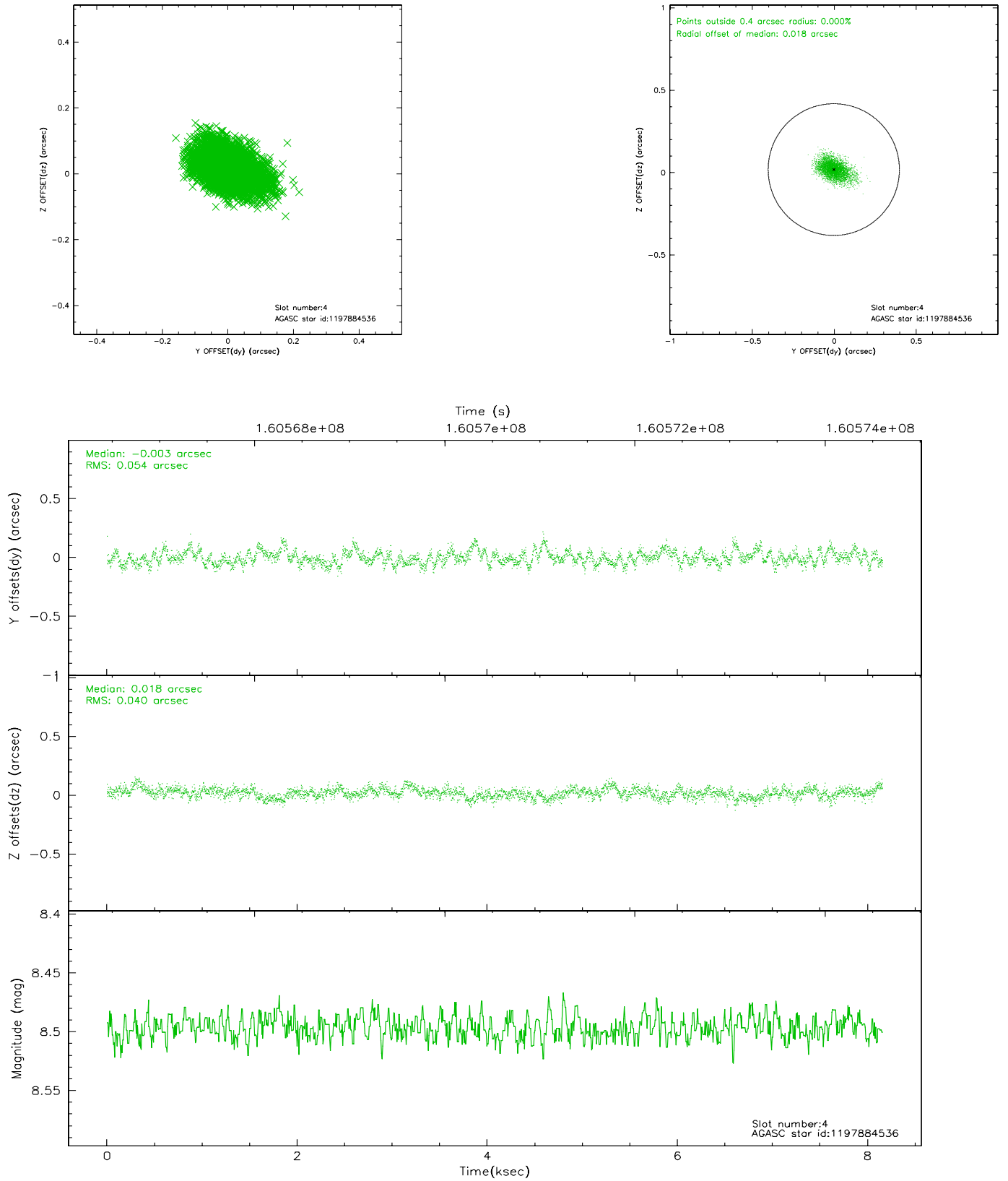
slot	status	id	mag	n_pts	med_dy	med_dz	dr1	dr2	ra	dec	mean_y	mean_z
0	FID	ACIS-I-1	7.25	1991	-0.052	0.090	0.006	0.010	0.000000	0.000000	937.09	-832.31
1	FID	ACIS-I-5	7.24	1990	-0.030	0.016	0.006	0.009	0.000000	0.000000	-1810.63	1064.74
2	FID	ACIS-I-6	7.26	1990	-0.009	-0.036	0.006	0.010	0.000000	0.000000	401.91	1709.99
3	GUIDE	1197750824	10.08	3969	0.047	0.284	0.153	0.273	14.791487	-71.393477	-1711.50	-1744.75
4	GUIDE	1197884536	8.50	3981	-0.003	0.018	0.069	0.120	17.160729	-71.835289	-1321.89	1355.13
5	GUIDE	1197885328	7.23	3981	-0.040	-0.103	0.060	0.093	16.283090	-71.733943	-1277.34	304.10
6	GUIDE	1197749776	9.90	3978	0.236	-0.120	0.137	0.221	12.674349	-72.322893	2330.38	-2443.12
7	GUIDE	1198189696	7.38	3980	-0.240	-0.071	0.044	0.070	15.223750	-72.697522	2368.44	626.31

2.4 Star Slots

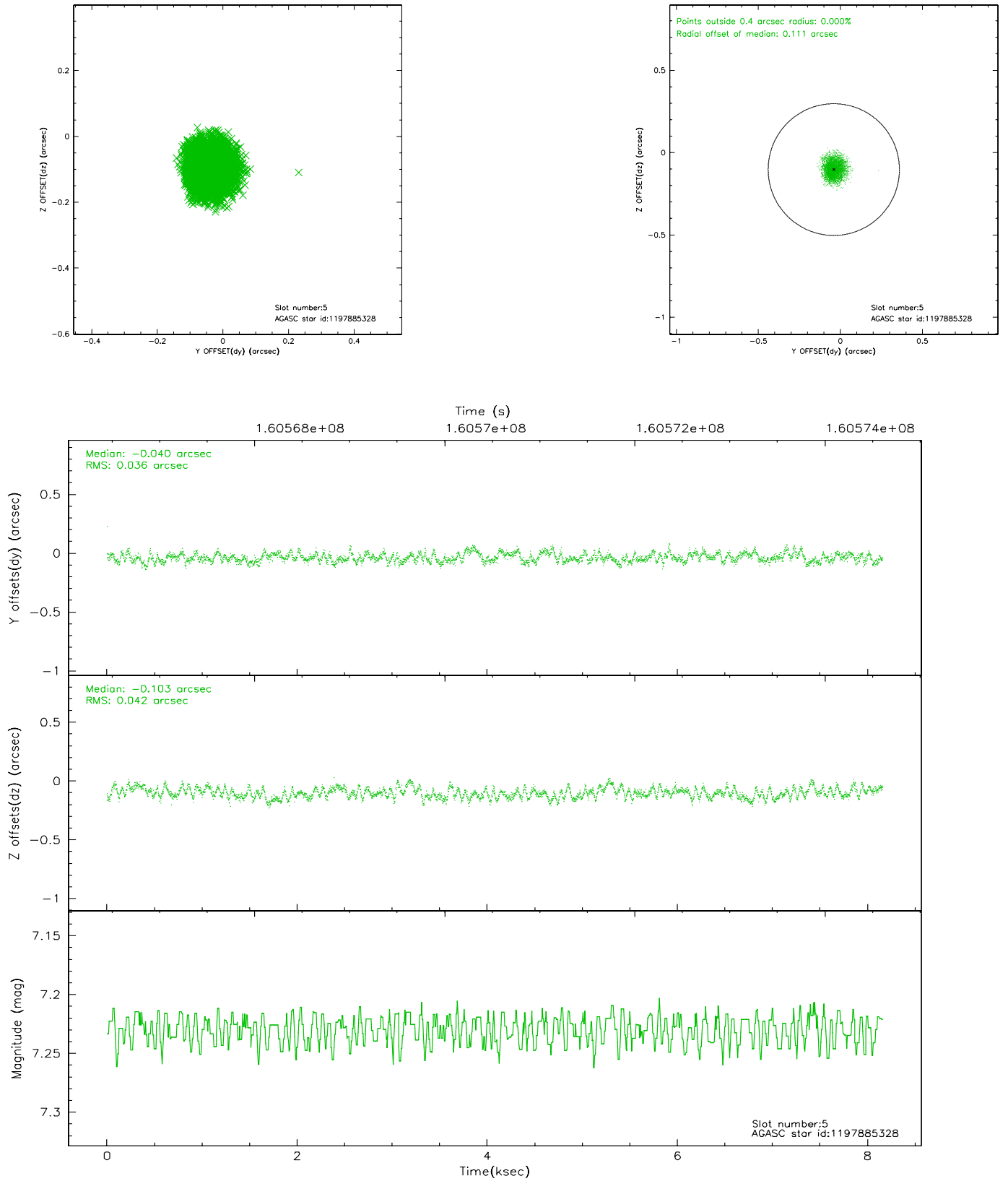
2.4.1 Slot 3



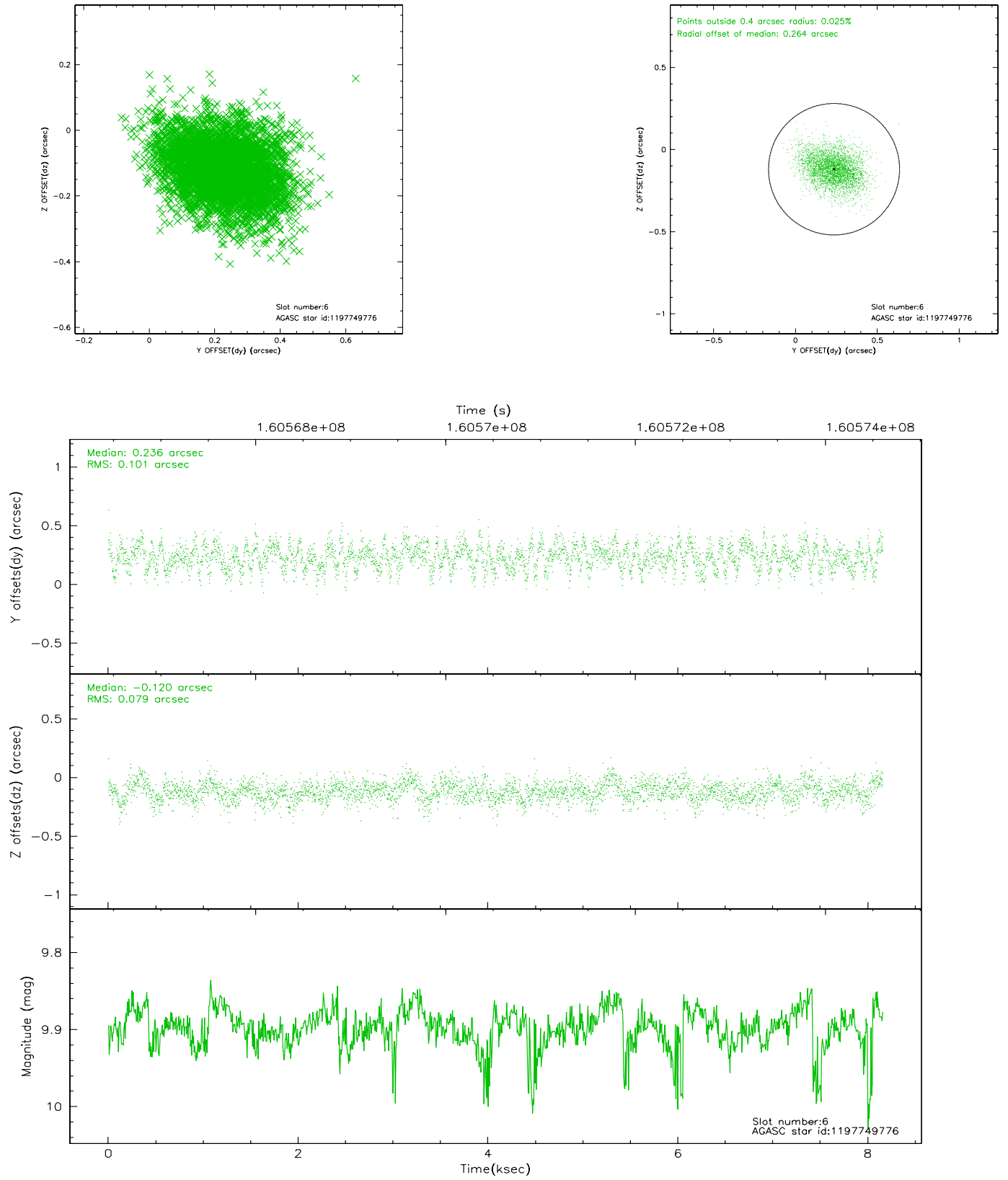
2.4.2 Slot 4



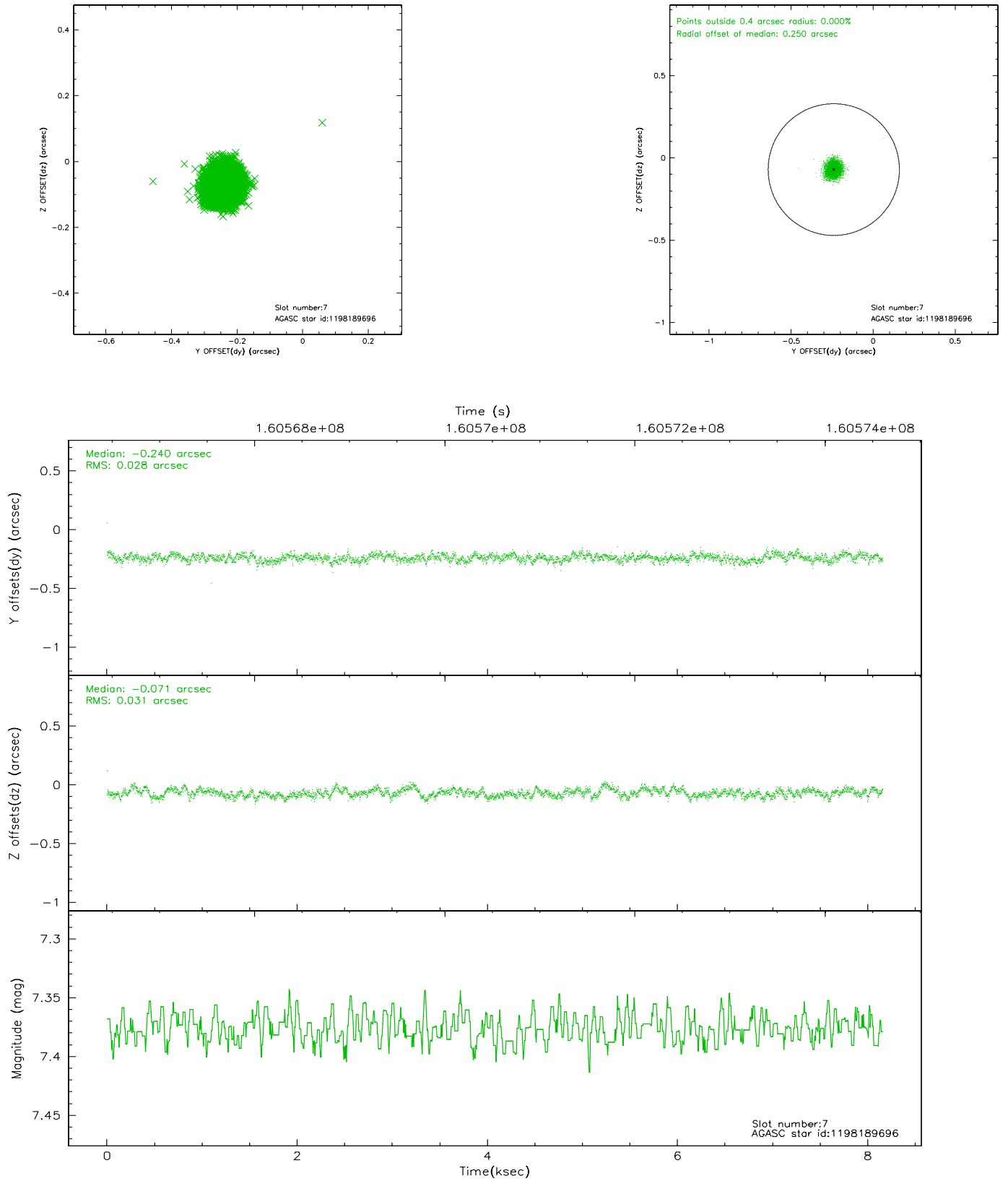
2.4.3 Slot 5



2.4.4 Slot 6

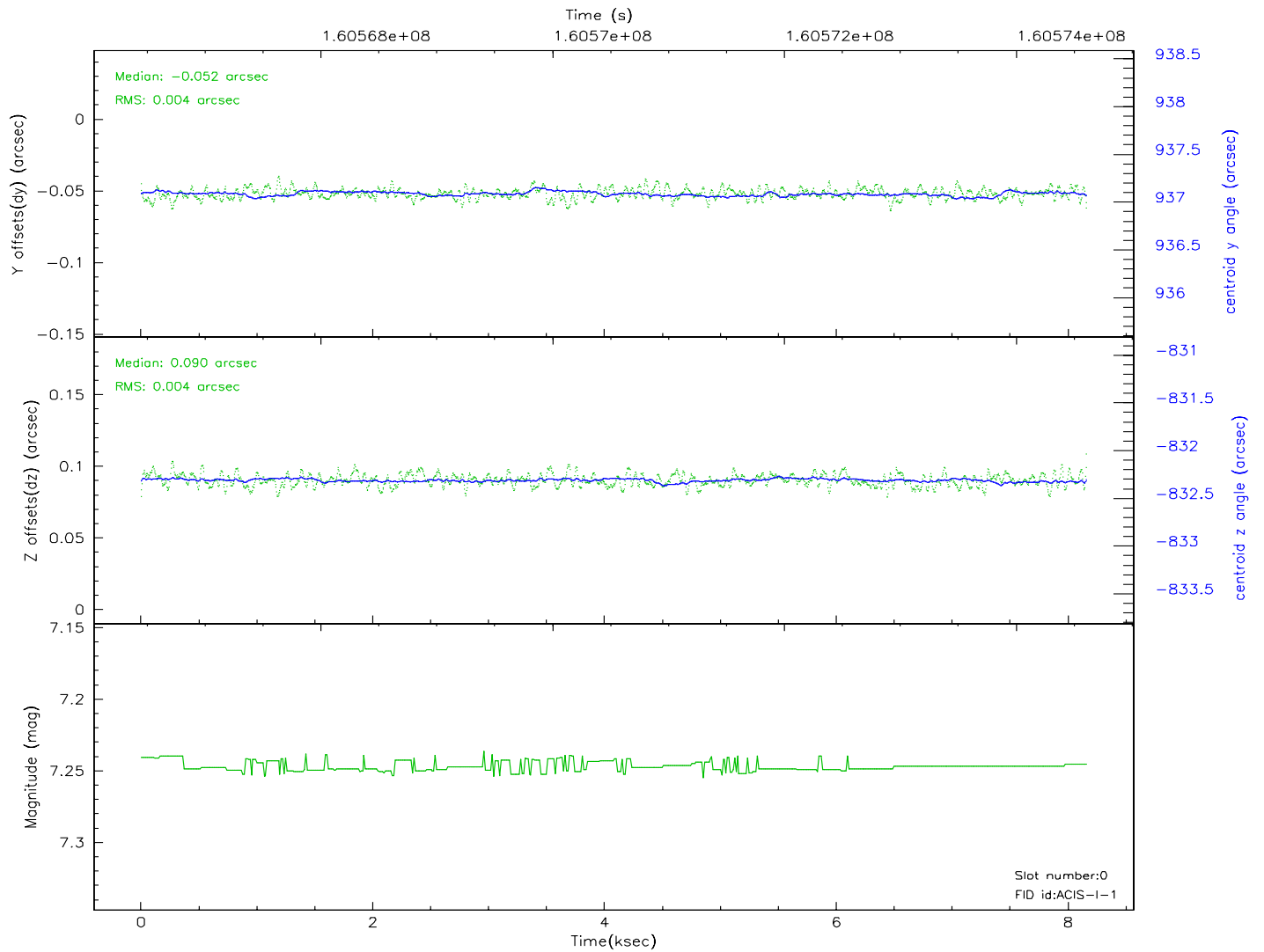
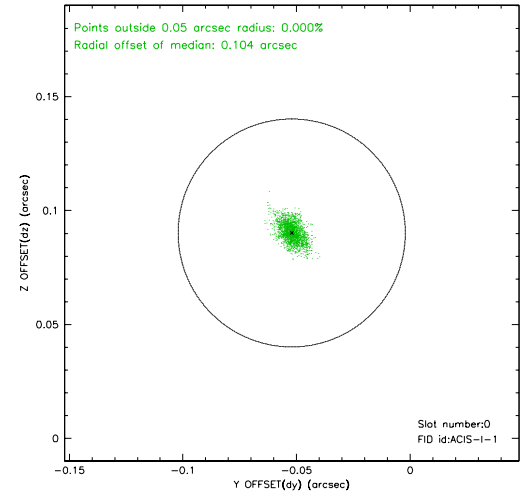
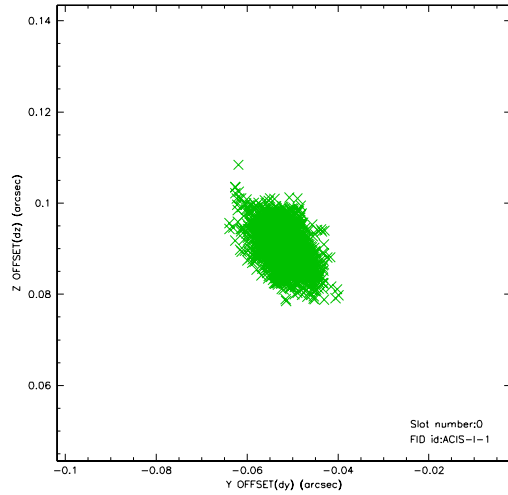


2.4.5 Slot 7

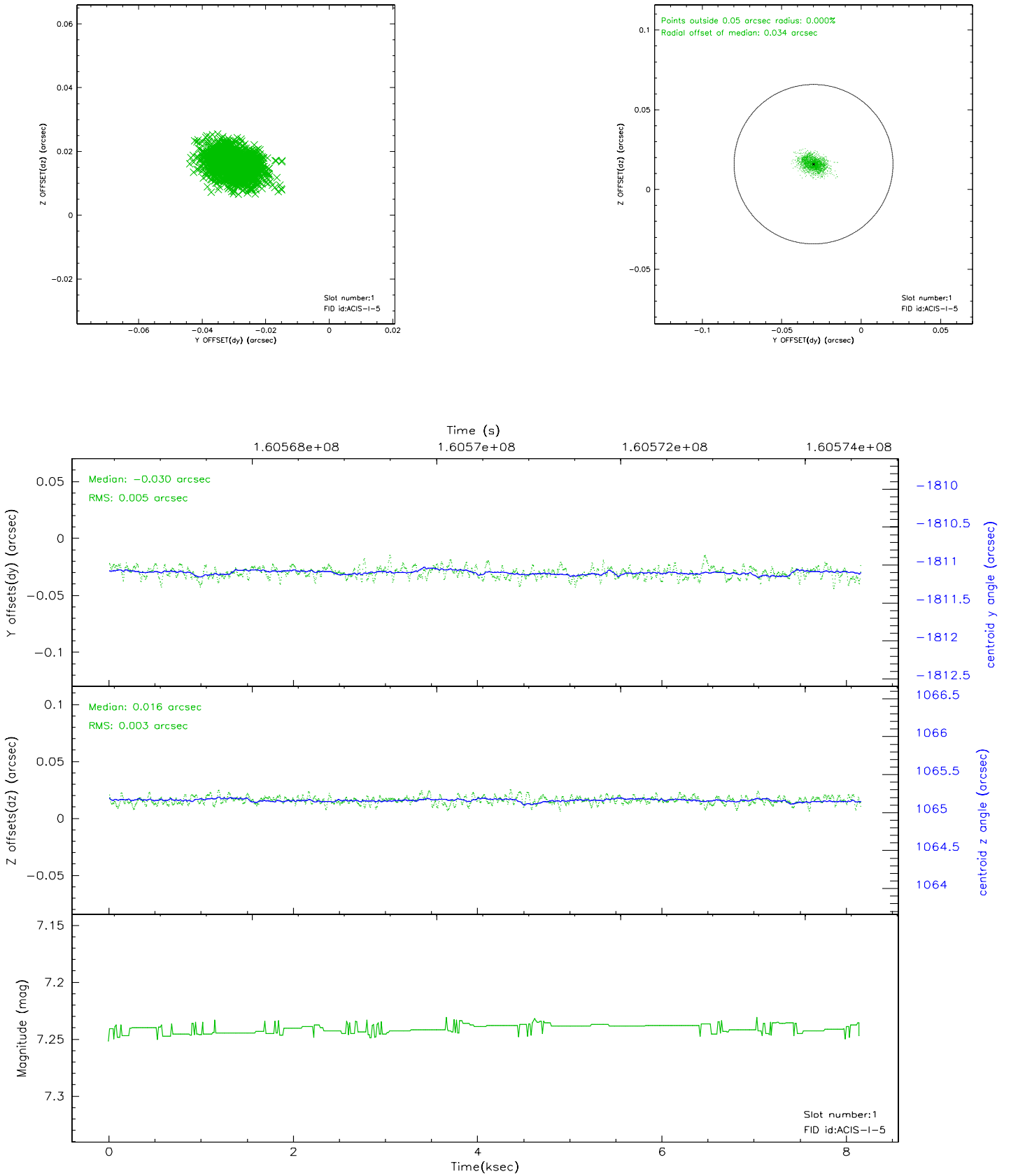


2.5 FID Slots

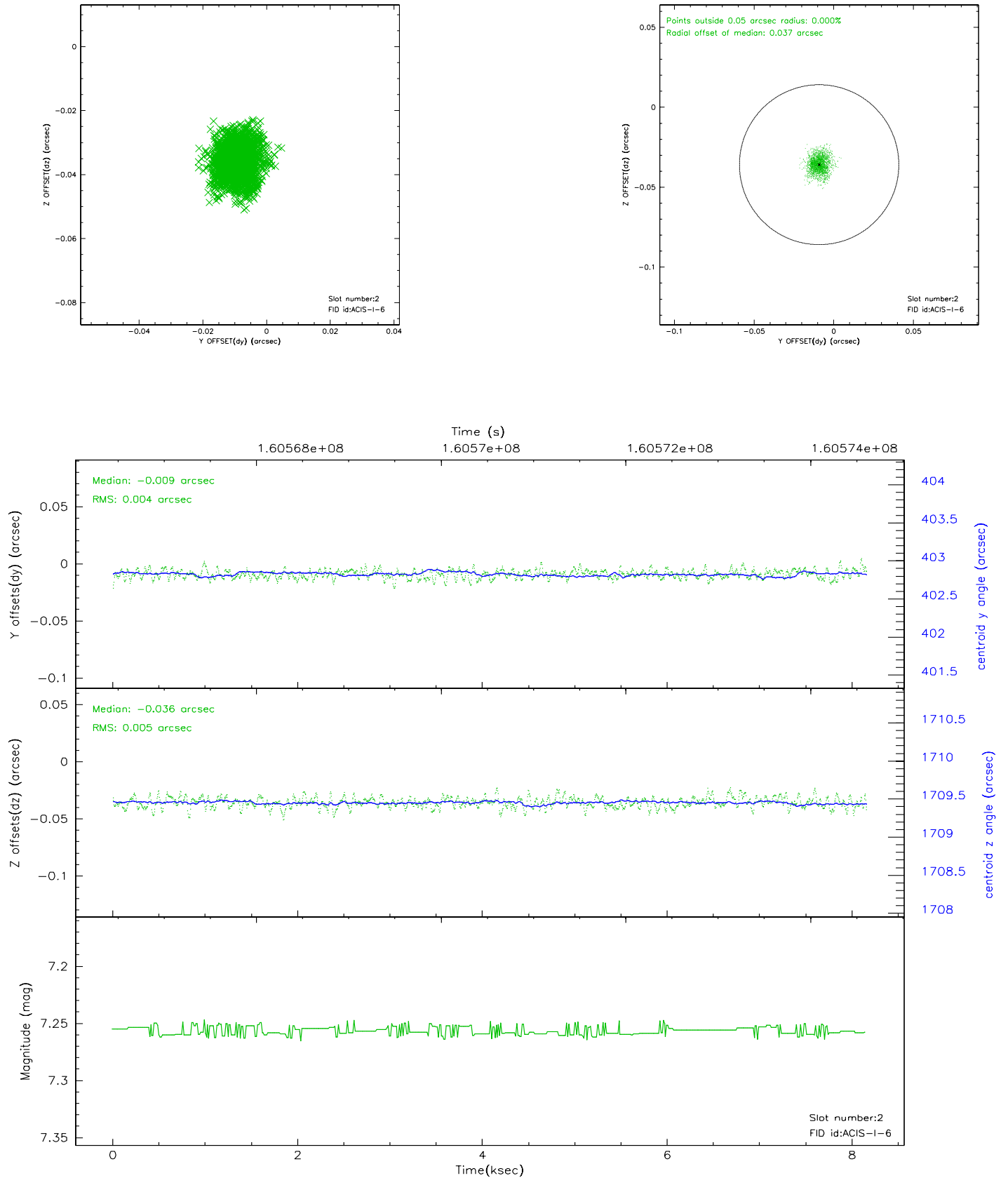
2.5.1 Slot 0



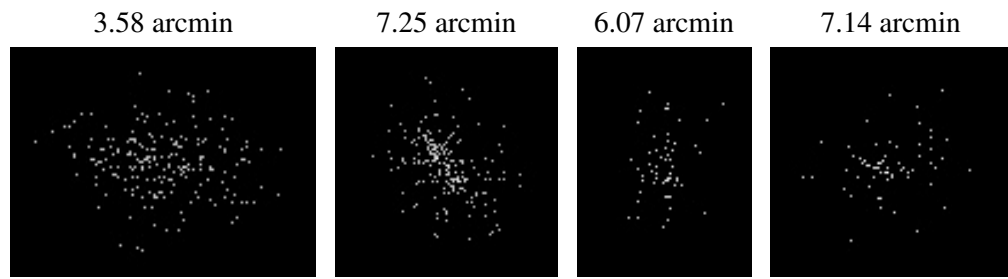
2.5.2 Slot 1



2.5.3 Slot 2



3 Point Sources



A Summary

A.1 Status

V&V Scientist	Beth Sundheim
V&V Date (YYYY-MM-DD)	2006.07.20
V&V Edition	1
V&V Disposition and Status	OK
V&V Charge Time	7.734

A.2 Comments

Window constraint satisfied.