

# V&V Reference Report

## L2 ASCDS Version : 7.6.8

Observation 3530 - L2 Version 001  
Chandra X-Ray Center

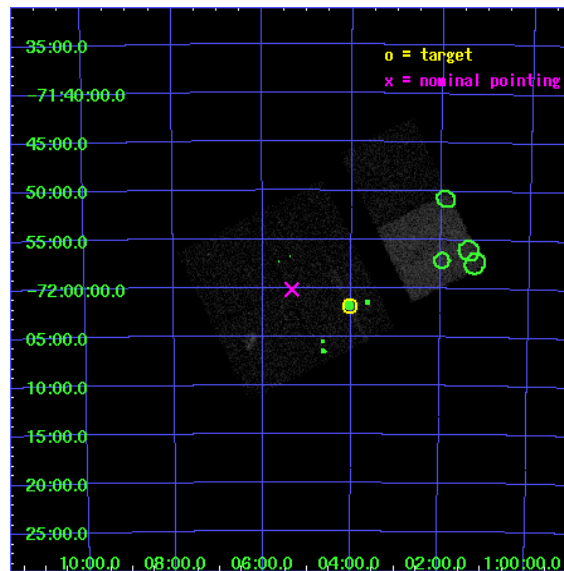
L2 Processing Date : Jul 11 2006

## Contents

<b>1</b>	<b>Front</b>	<b>2</b>
<b>2</b>	<b>OBI</b>	<b>3</b>
2.1	OBI . . . . .	3
2.1.1	Images . . . . .	3
2.1.2	Bias . . . . .	3
2.1.3	Parameters . . . . .	4
2.1.4	Events . . . . .	4
2.2	Compared Parameters . . . . .	5
2.3	Aspect . . . . .	6
2.4	Star Slots . . . . .	9
2.4.1	Slot 3 . . . . .	9
2.4.2	Slot 4 . . . . .	10
2.4.3	Slot 5 . . . . .	11
2.4.4	Slot 6 . . . . .	12
2.4.5	Slot 7 . . . . .	13
2.5	FID Slots . . . . .	14
2.5.1	Slot 0 . . . . .	14
2.5.2	Slot 1 . . . . .	15
<b>3</b>	<b>Point Sources</b>	<b>16</b>
<b>A</b>	<b>Summary</b>	<b>17</b>
A.1	Status . . . . .	17
A.2	Comments . . . . .	17

# 1 Front

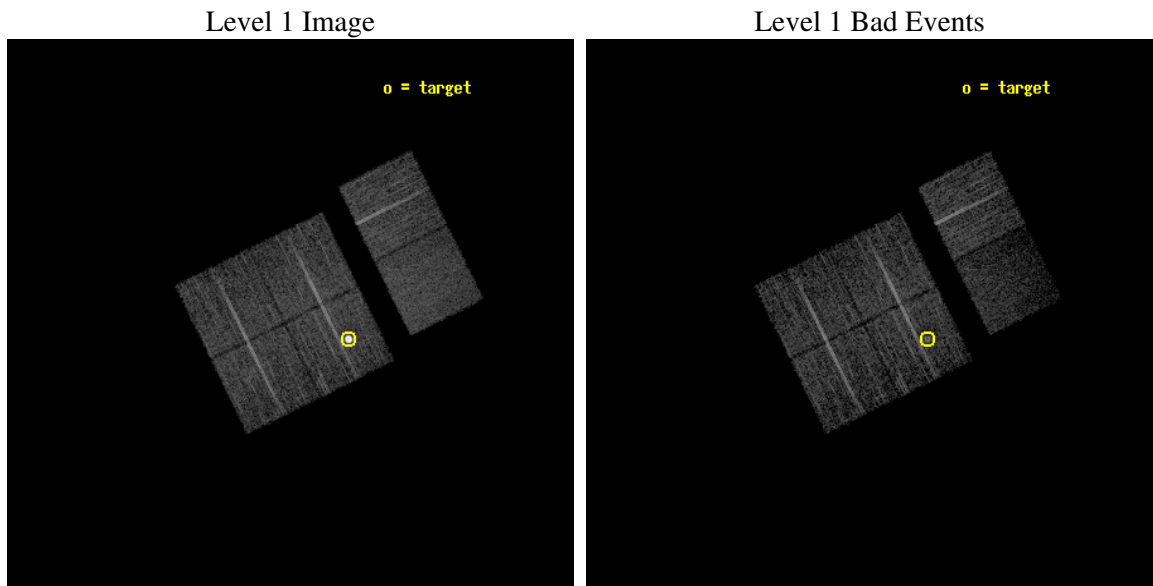
seq_num	590285
obs_id	3530
title	AO4B ACIS-I CALIBRATION OBSERVATIONS OF E0102-72
observer	Dr. CXC Calibration
object	E0102-72[I3,-120,-4.0,4.5,0]
dtcycle	0
cycle	P
ra_targ	16.01
dec_targ	-72.032028
ra_nom	16.335442914421
dec_nom	-72.003000123225
roll_nom	63.748255351462
revision	3
ontime	7750.3180106282
livetime	7652.1788172964
ontime0	7756.7999711037
ontime1	7756.7999711037
ontime2	7756.7999711037
ontime3	7750.3180106282
ontime6	7756.7999711037
ontime7	7756.7999711037
l2events	56152



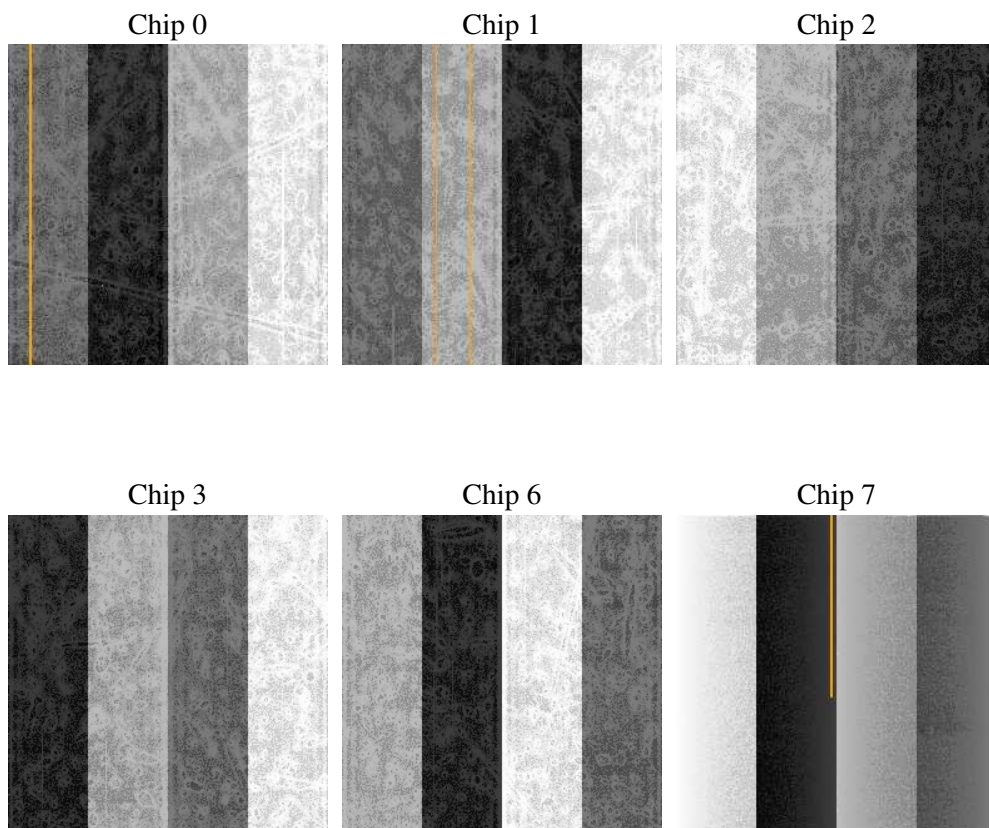
## 2 OBI

### 2.1 OBI

#### 2.1.1 Images



#### 2.1.2 Bias



### 2.1.3 Parameters

obi_num	0
ascdsver	7.6.8
caldsver	3.2.2
date	2006-07-11T16:02:06
revision	3

sched_exp_time	8000.000000
ontime	7755.7229910195
ontime0	7765.4459516406
ontime1	7762.2049514651
ontime2	7762.204931587
ontime3	7755.7229910195
ontime6	7762.2049514651
ontime7	7762.2049514651
l1events	242804

### 2.1.4 Events

	ccd 0	ccd 1	ccd 2	ccd 3	ccd 6	ccd 7
level 1 events	34795	35243	37409	61265	38414	35678
rejected events	31203	30686	33772	33623	34605	18891
rejected %	89%	87%	90%	54%	90%	52%

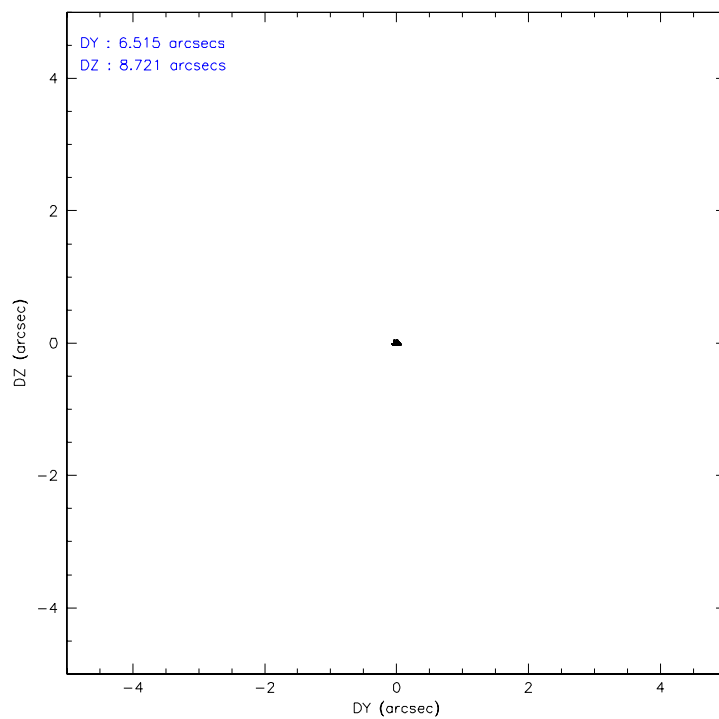
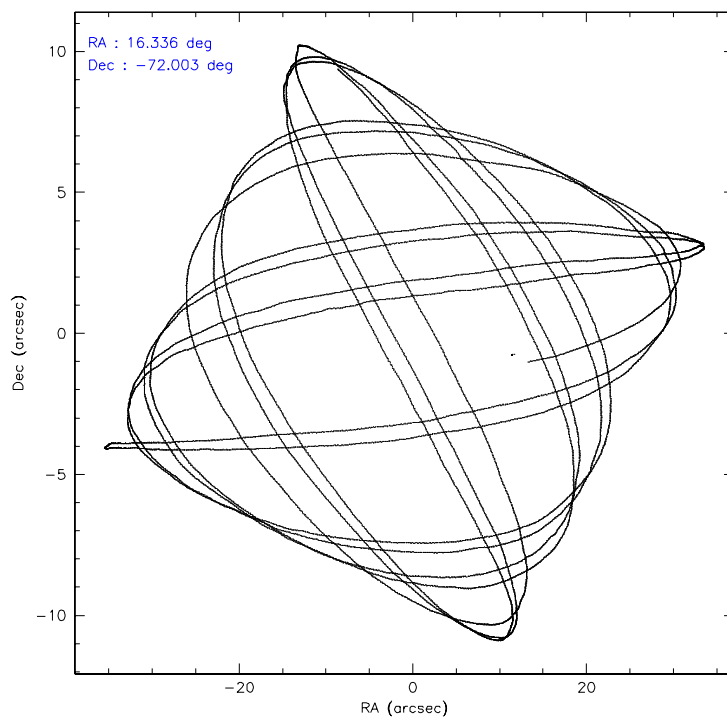
	ccd 0	ccd 1	ccd 2	ccd 3	ccd 6	ccd 7
grade 0 events	1350	1889	1437	22862	1393	1358
	3%	5%	3%	37%	3%	3%
grade 1 events	17	24	15	213	21	13
	0%	0%	0%	0%	0%	0%
grade 2 events	783	864	790	2394	819	4228
	2%	2%	2%	3%	2%	11%
grade 3 events	413	505	388	844	434	1096
	1%	1%	1%	1%	1%	3%
grade 4 events	408	489	410	817	439	1079
	1%	1%	1%	1%	1%	3%
grade 5 events	1131	1126	1008	1284	1304	2800
	3%	3%	2%	2%	3%	7%
grade 6 events	646	813	615	745	727	9046
	1%	2%	1%	1%	1%	25%
grade 7 events	30047	29533	32746	32106	33277	16058
	86%	83%	87%	52%	86%	45%

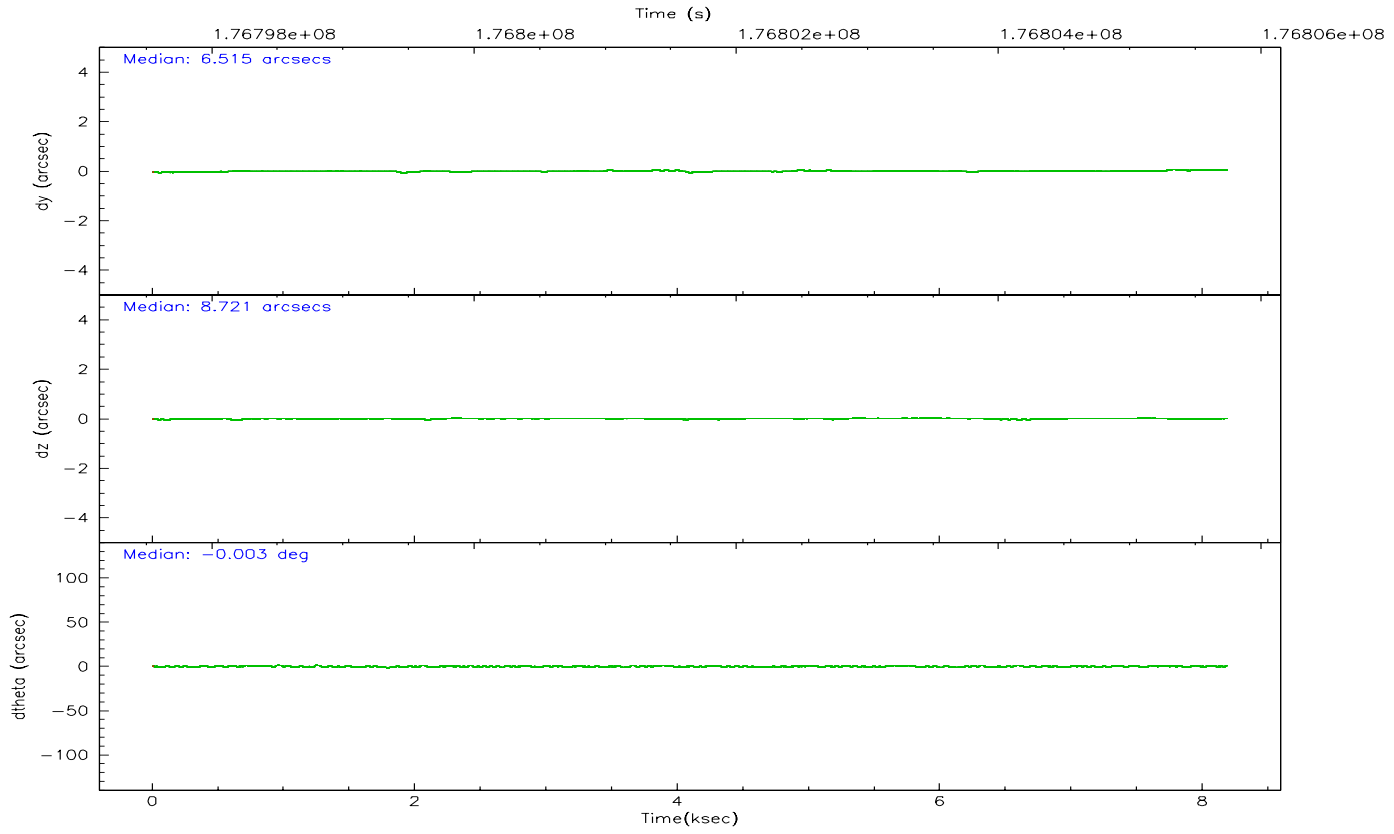
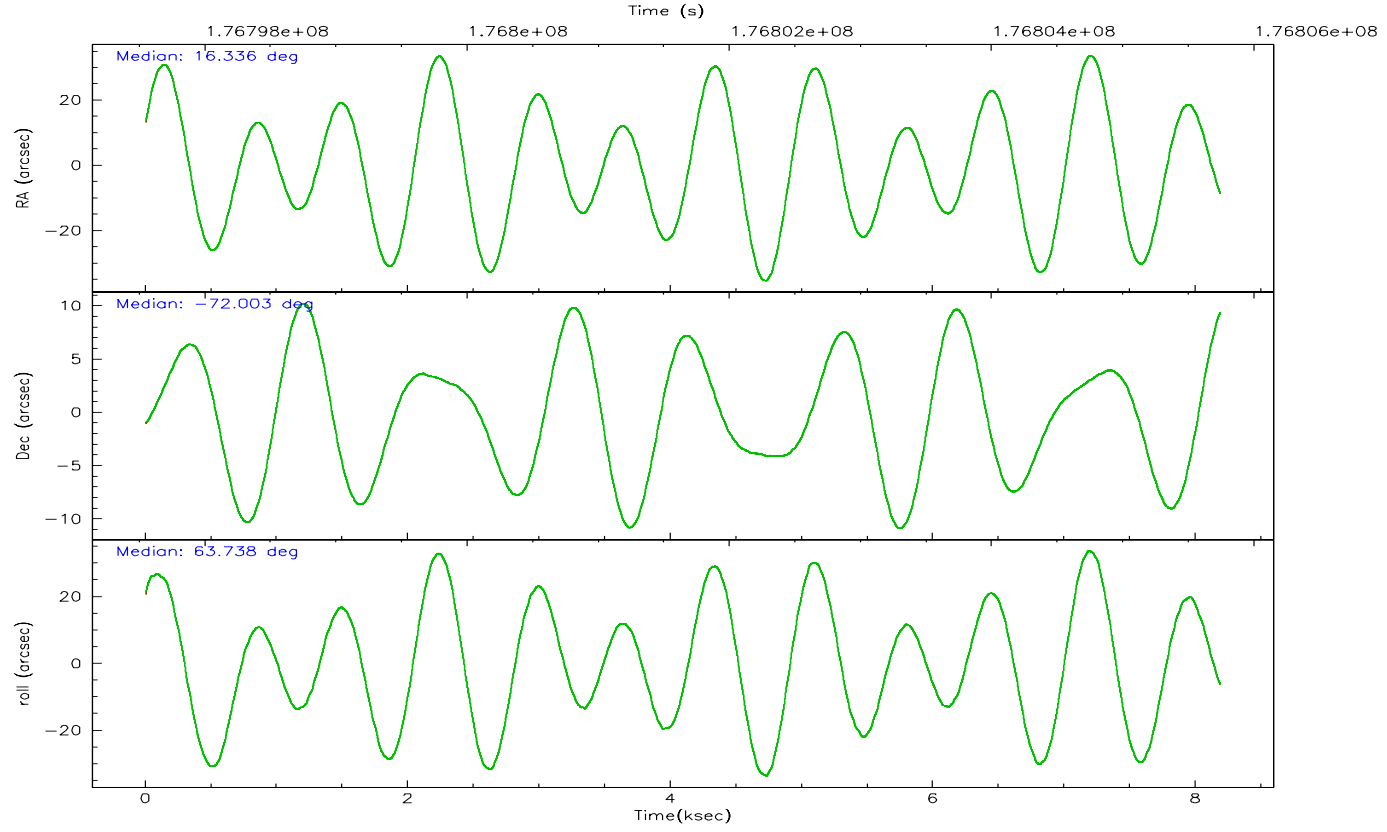
## 2.2 Compared Parameters

Parameter	Planned	Actual
Instrument	ACIS	ACIS
Detector	ACIS-012367	ACIS-012367
Grating	NONE	NONE
Data mode	VFAINT	VFAINT
Observation mode	POINTING	POINTING
Pointing RA	16.341473	16.33544291442128
Pointing Dec	-72.030313	-72.00300012322536
Pointing Roll	63.545302	63.74825535146208
Window start time	174614464.184000	174614464.184000
Window stop time	177292864.184000	177292864.184000
SIM focus pos (mm)	-0.782348	-0.7809083437167272
SIM defocus (mm)	0	0.001439871863259334
SIM translation stage pos (mm)	-233.592463	-233.5874344608287
SIM translation stage offset (mm)	0	-0.005018542100998502
Observation start time	176797743.184000	176797367.35898
Observation start date	2003-08-09T06:27:59	2003-08-09T06:22:47
Observation end time	176805743.184000	176806704.59688
Observation end date	2003-08-09T08:41:19	2003-08-09T08:58:24
Read mode	TIMED	TIMED

Parameter	Planned	Actual
Obspar format version number	6	6
Obspar file type	PREDICTED	ACTUAL
Obspar update status	NONE	UPDATED
On-chip summing requested	N	N
Subarray requested	NONE	NONE
Alternating exposures requested	N	N
Primary exposure time	0.000000	3.2

## 2.3 Aspect



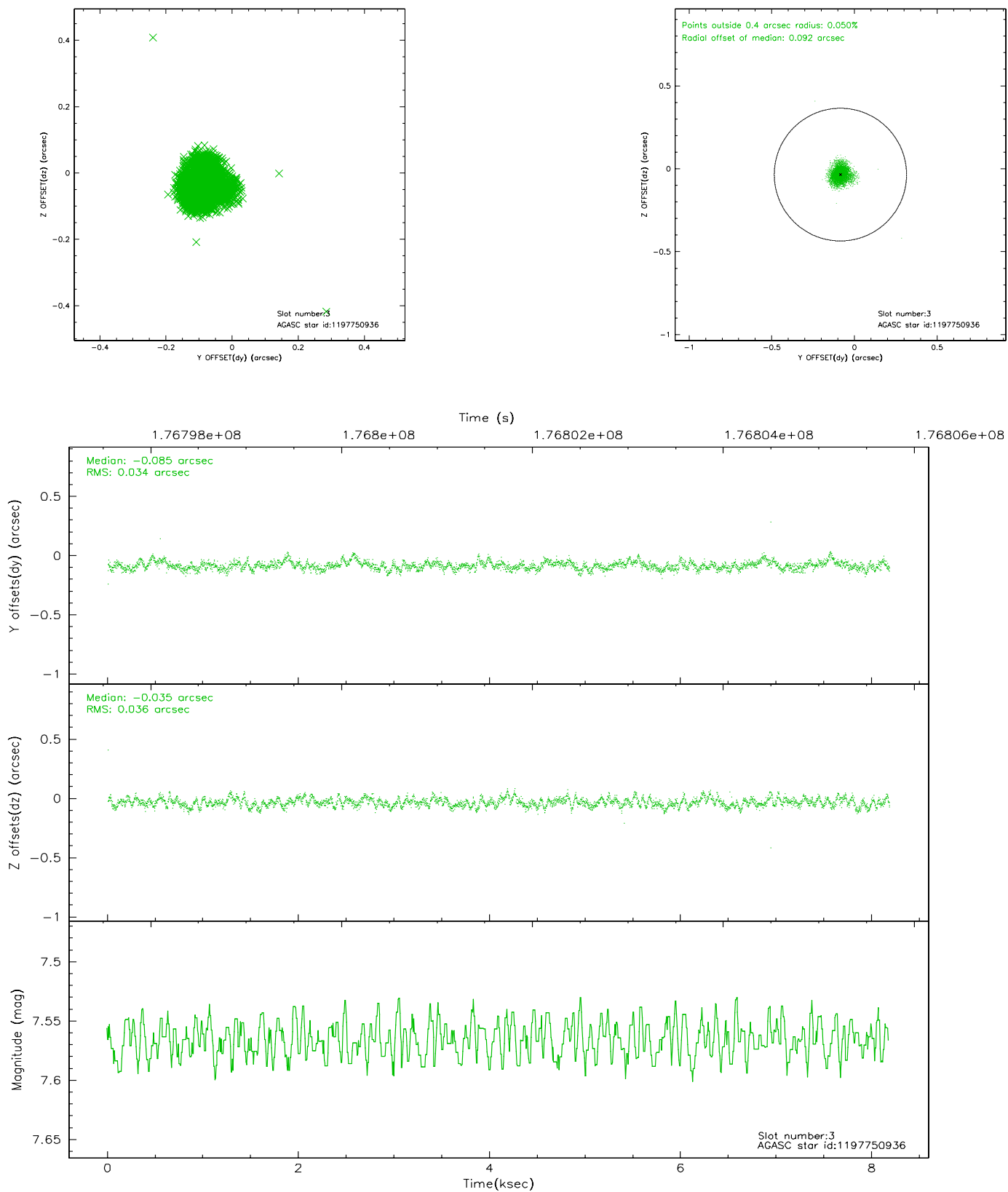


### Slot Statistics

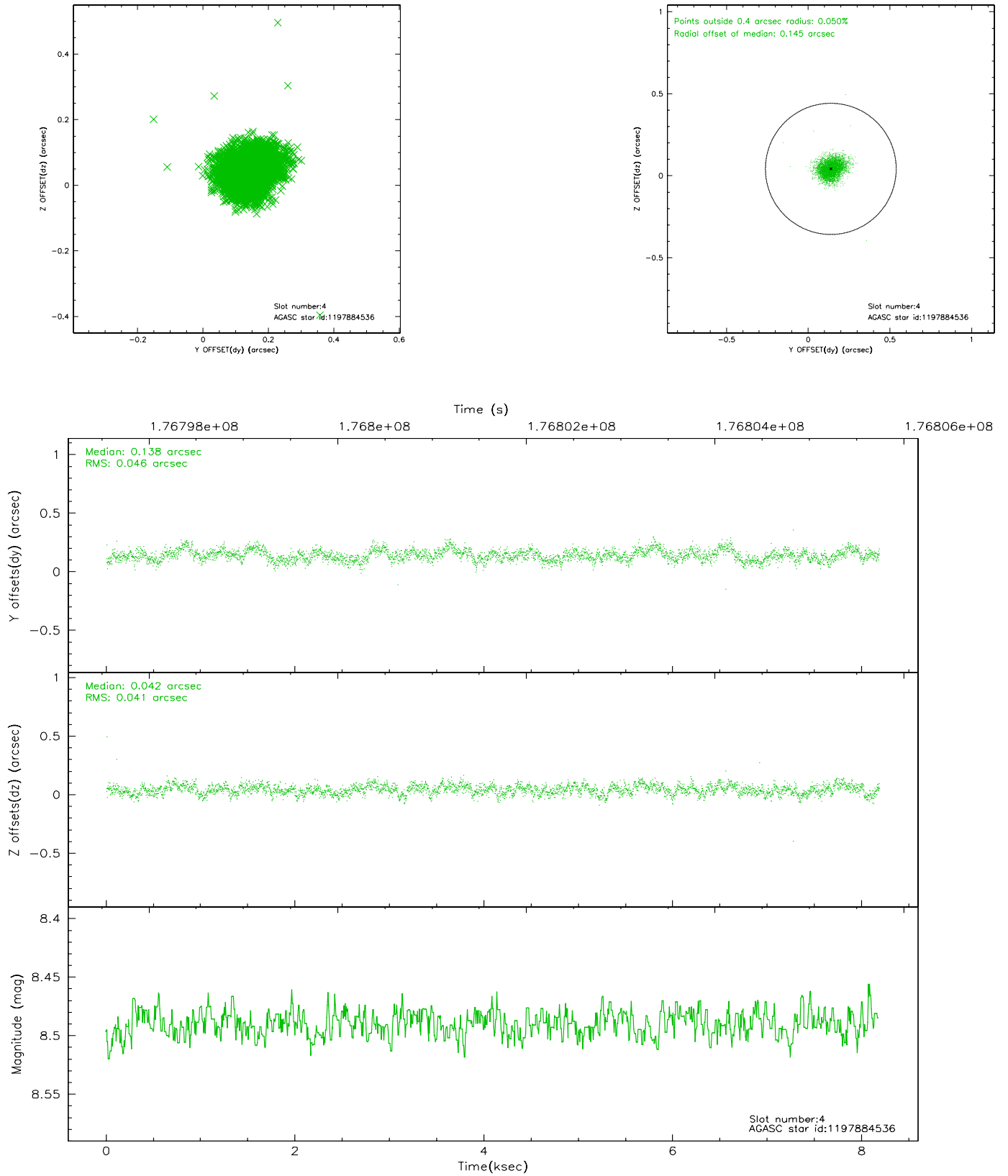
slot	status	id	mag	n_pts	med_dy	med_dz	dr1	dr2	ra	dec	mean_y	mean_z
0	FID	ACIS-I-1	7.24	1997	-0.004	0.007	0.004	0.008	0.000000	0.000000	933.20	-832.13
1	FID	ACIS-I-5	7.23	1997	-0.056	0.043	0.004	0.008	0.000000	0.000000	-1814.63	1064.99
2	OMITTED		0.00	0	0.000	0.000	0.000	0.000	0.000000	0.000000	0.00	0.00
3	GUIDE	1197750936	7.57	3993	-0.085	-0.035	0.052	0.083	15.387940	-71.549550	1057.45	1740.03
4	GUIDE	1197884536	8.49	3993	0.138	0.042	0.066	0.103	17.160729	-71.835289	1033.15	-512.35
5	GUIDE	1197884712	8.32	3992	0.020	0.115	0.053	0.084	16.087398	-72.252690	-841.09	-107.33
6	GUIDE	1197885104	9.35	3992	-0.028	-0.006	0.079	0.129	17.845067	-72.189368	206.25	-1746.26
7	GUIDE	1197885328	7.22	3992	-0.050	-0.116	0.054	0.087	16.283090	-71.733943	926.15	533.78

## 2.4 Star Slots

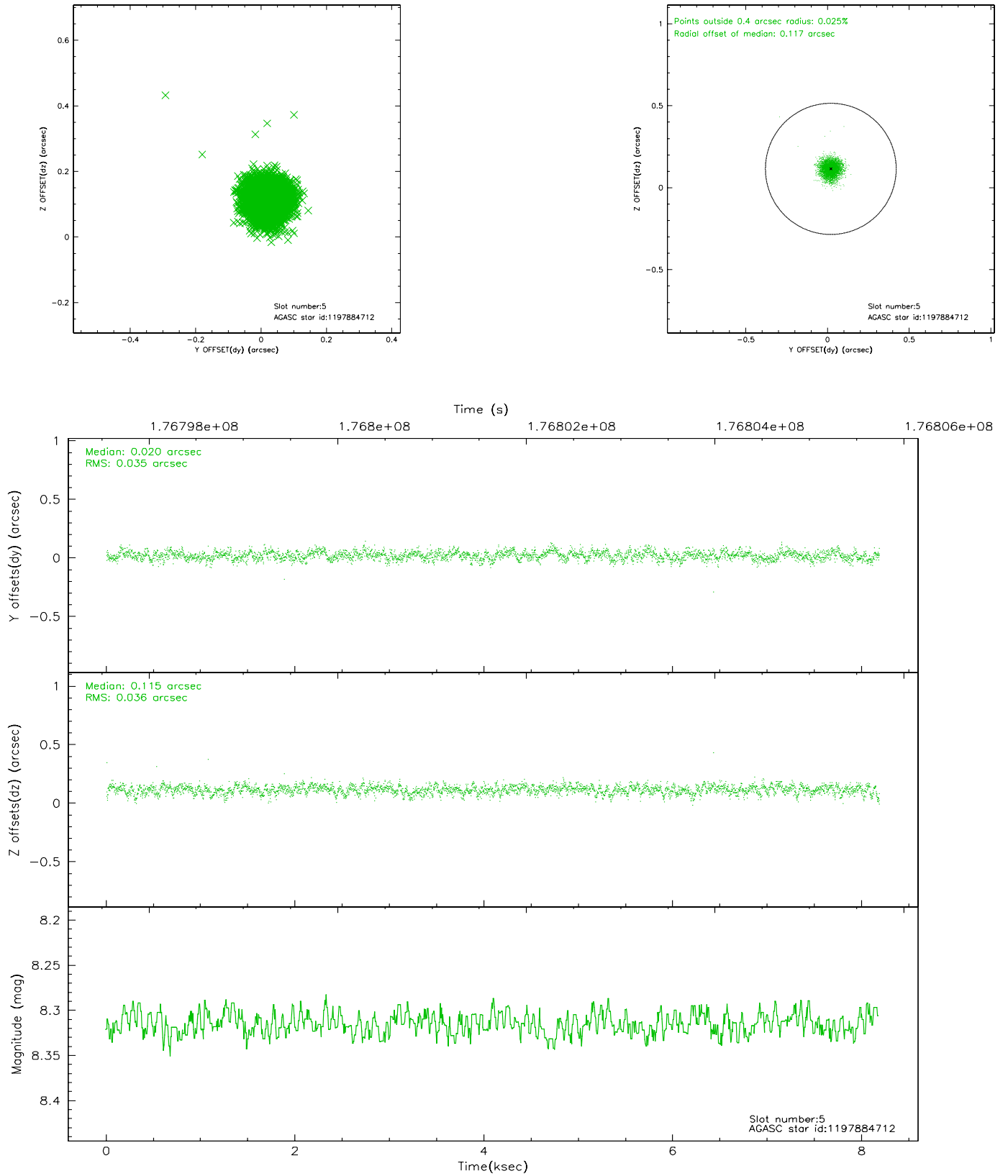
### 2.4.1 Slot 3



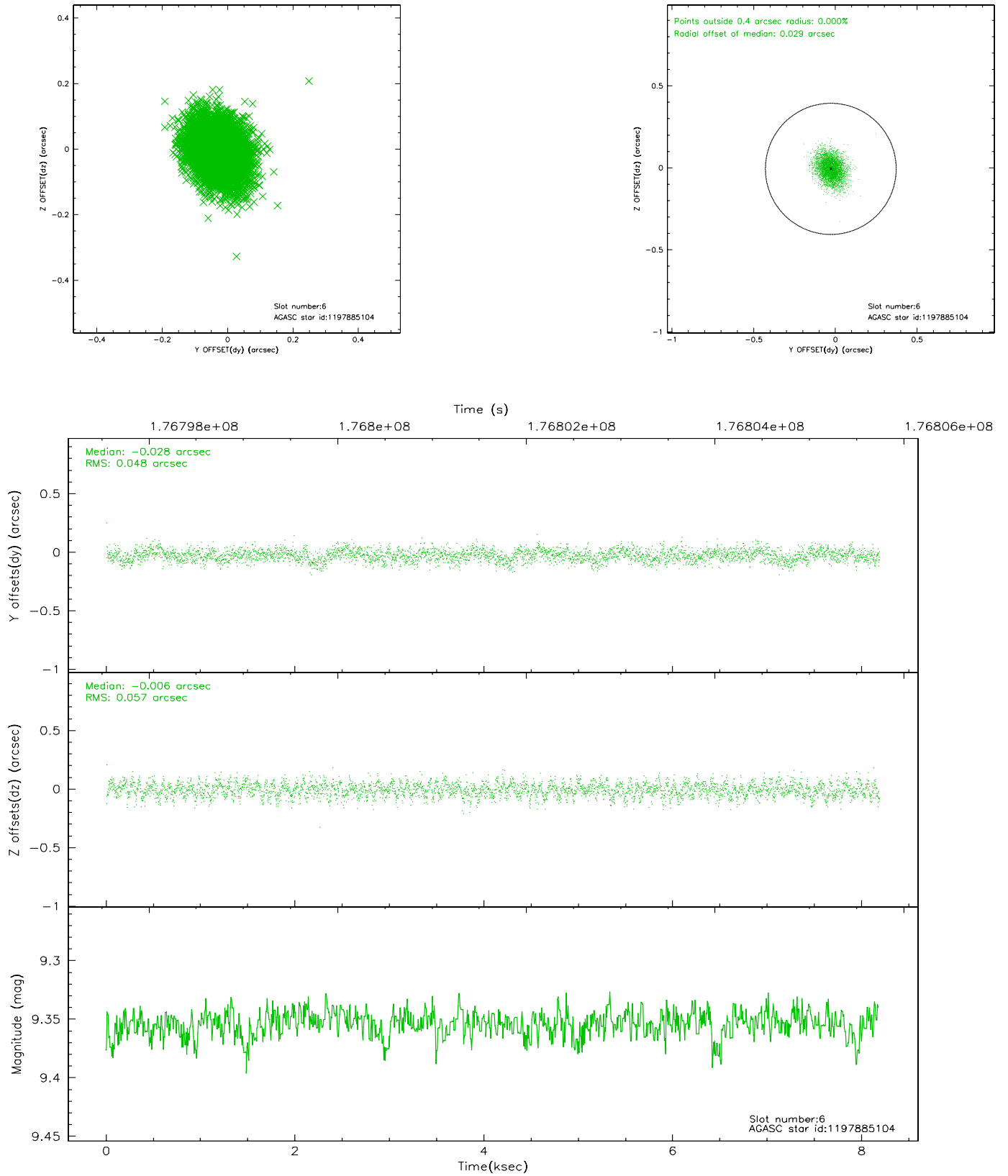
## 2.4.2 Slot 4



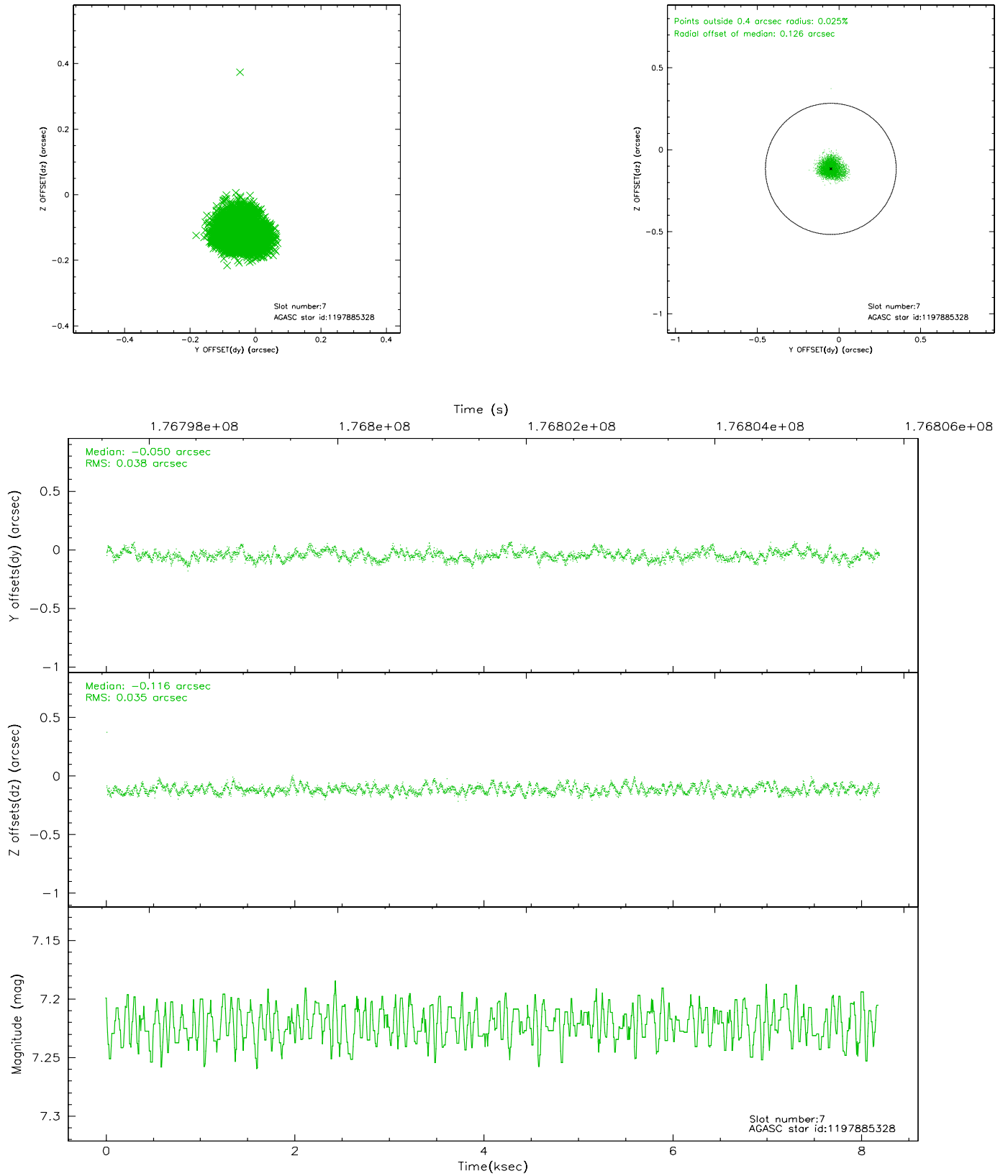
### 2.4.3 Slot 5



## 2.4.4 Slot 6

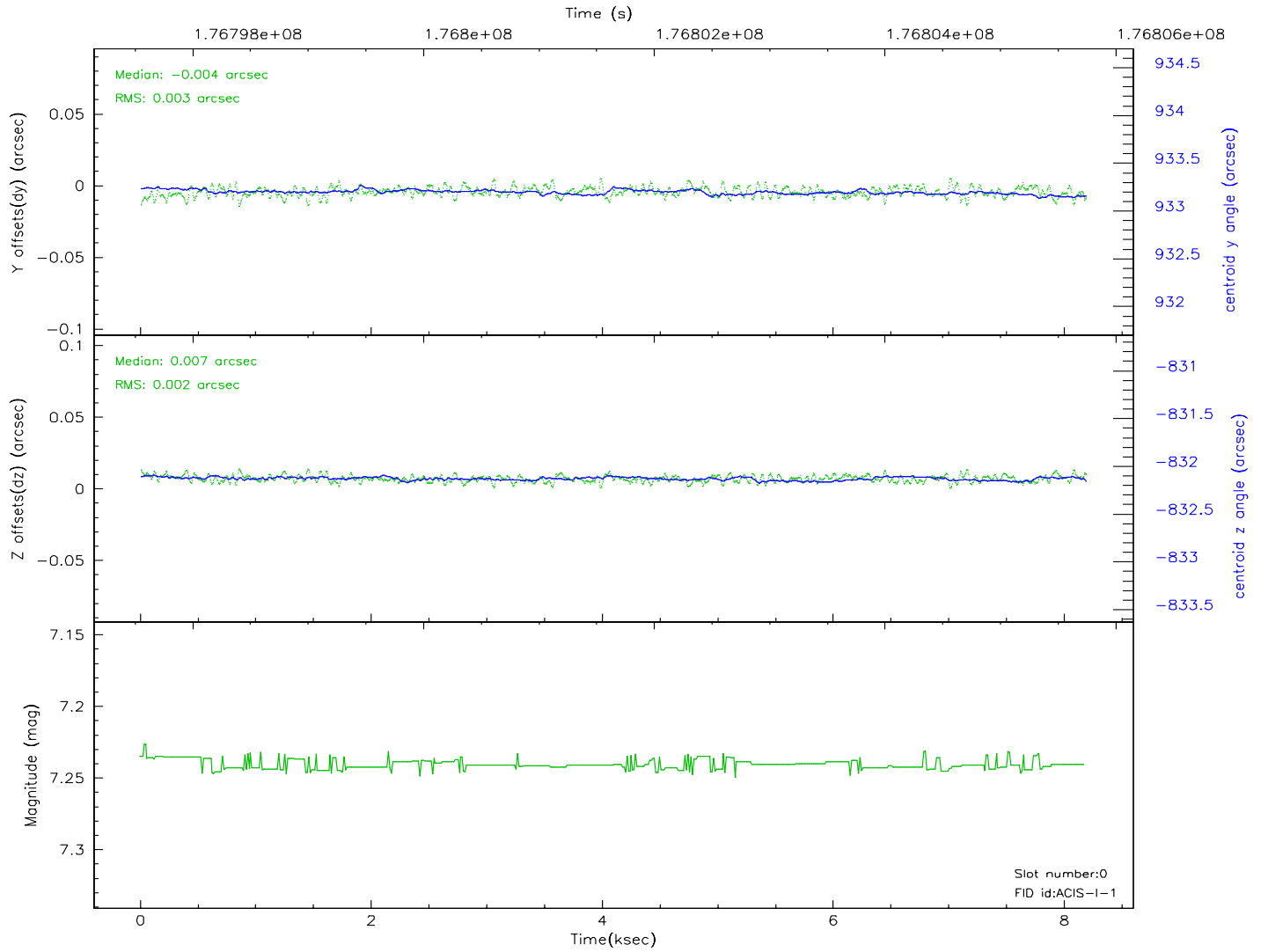
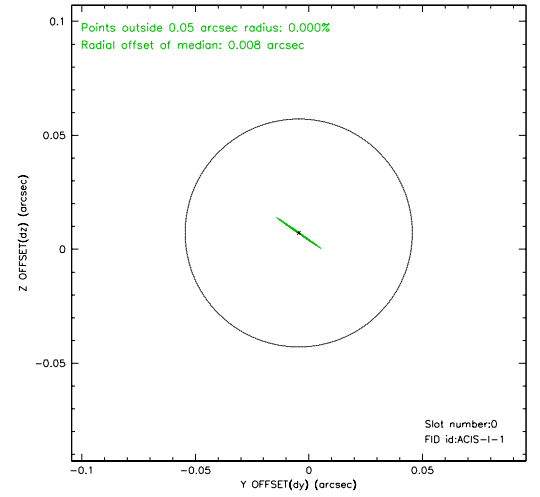
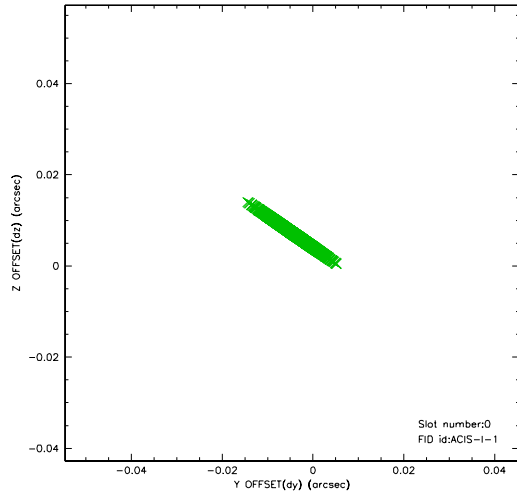


## 2.4.5 Slot 7

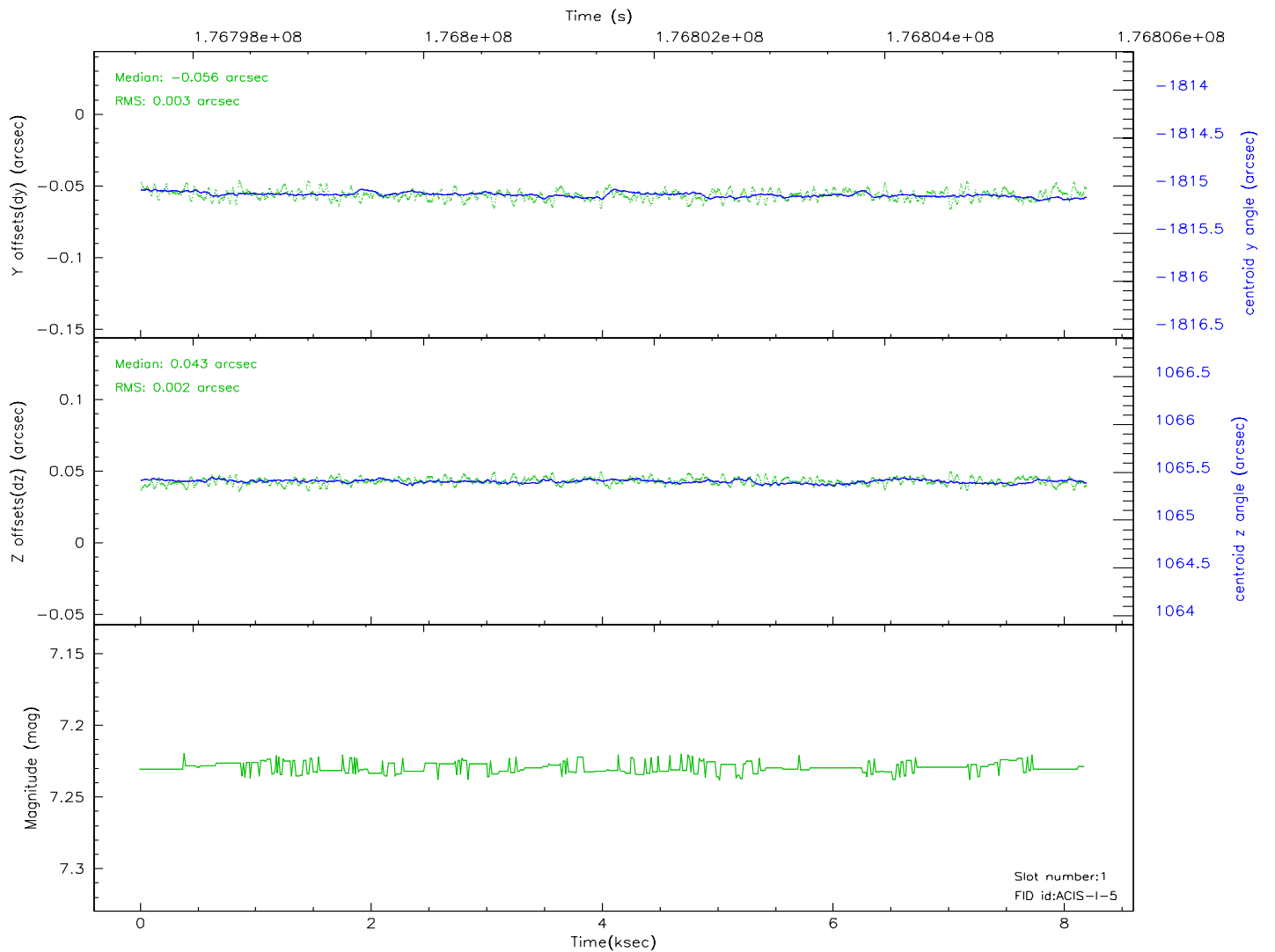
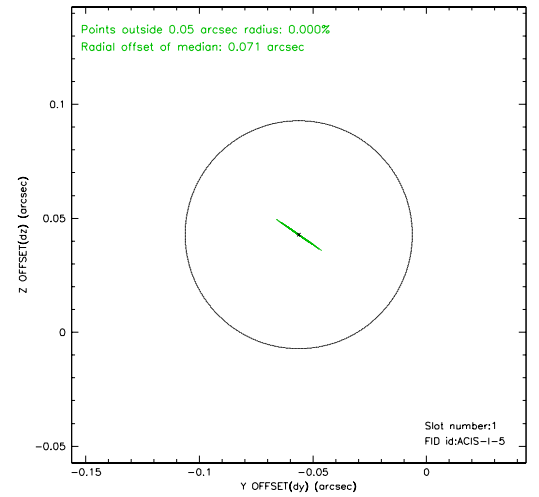
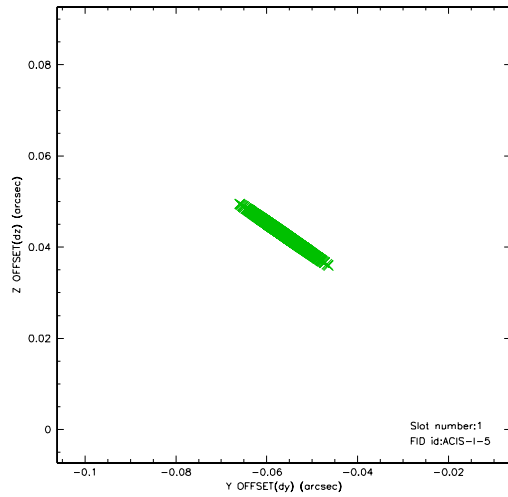


## 2.5 FID Slots

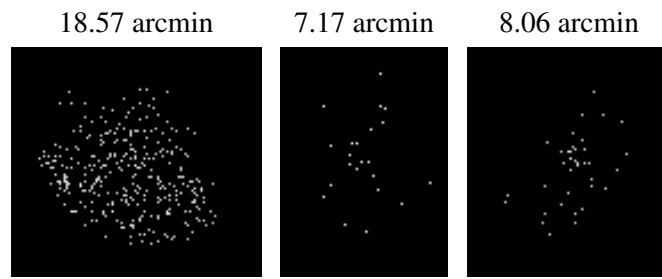
### 2.5.1 Slot 0



## 2.5.2 Slot 1



### 3 Point Sources



# A Summary

## A.1 Status

V&V Scientist	Beth Sundheim
V&V Date (YYYY-MM-DD)	2010.10.01
V&V Edition	2
V&V Disposition and Status	OK
V&V Charge Time	7.753

## A.2 Comments

The guide star in slot 2 was manually excluded from the processing due to poor data quality.  
Window constraint met.