

V&V Reference Report

L2 ASCDS Version : 7.6.9

Observation 3320 - L2 Version 001
Chandra X-Ray Center

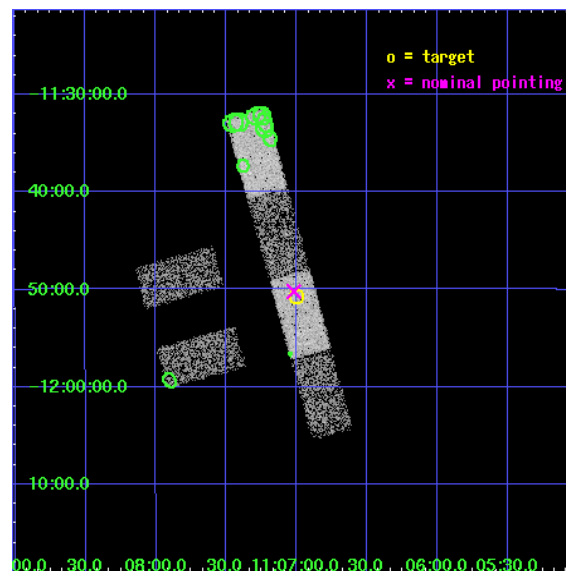
L2 Processing Date : Oct 9 2006

Contents

1	Front	2
2	OBI	3
2.1	OBI	3
2.1.1	Images	3
2.1.2	Bias	3
2.1.3	Parameters	4
2.1.4	Events	4
2.2	Compared Parameters	5
2.3	Aspect	6
2.4	Star Slots	9
2.4.1	Slot 3	9
2.4.2	Slot 4	10
2.4.3	Slot 5	11
2.4.4	Slot 6	12
2.4.5	Slot 7	13
2.5	FID Slots	14
2.5.1	Slot 0	14
2.5.2	Slot 1	15
2.5.3	Slot 2	16
3	Point Sources	17
A	Summary	18
A.1	Status	18
A.2	Comments	18

1 Front

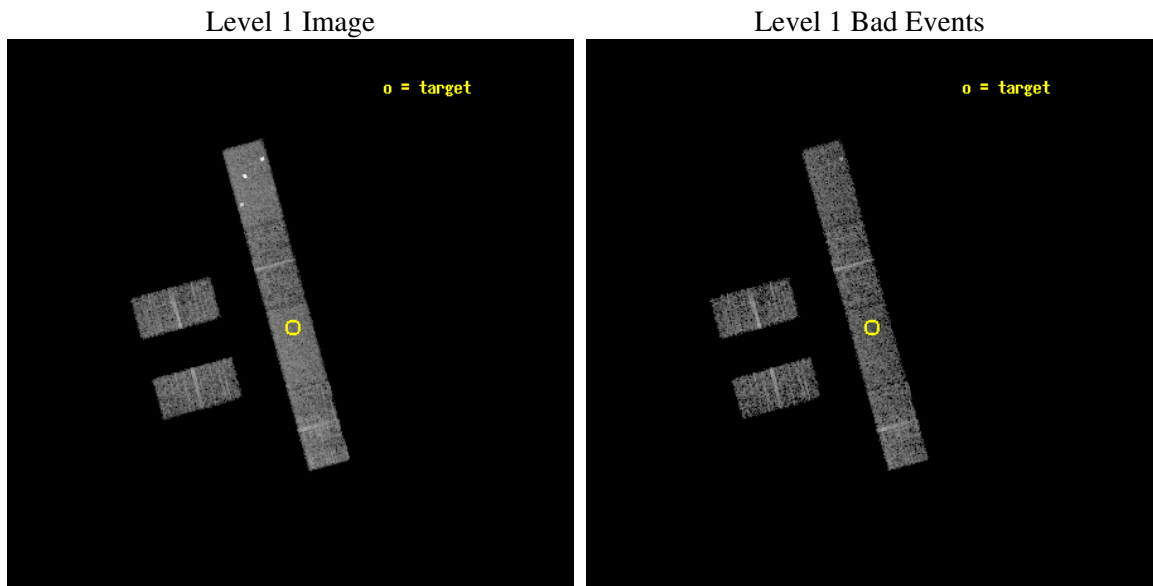
seq_num	900159
obs_id	3320
title	THE SHEEP SURVEY: WHAT KIND OF OBJECTS MAKE THE X-RAY BACKGROUND?
observer	Professor Kirpal Nandra
object	AX J1107.0-1150
dtcycle	0
cycle	P
ra_targ	166.750833
dec_targ	-11.845833
ra_nom	166.75510739325
dec_nom	-11.837026928004
roll_nom	74.620083769647
revision	3
ontime	5373.000035584
livetime	5253.2264720219
ontime2	5373.000035584
ontime3	5373.000035584
ontime5	5373.000035584
ontime6	5373.000035584
ontime7	5373.000035584
ontime8	5373.000035584
l2events	26304



2 OBI

2.1 OBI

2.1.1 Images

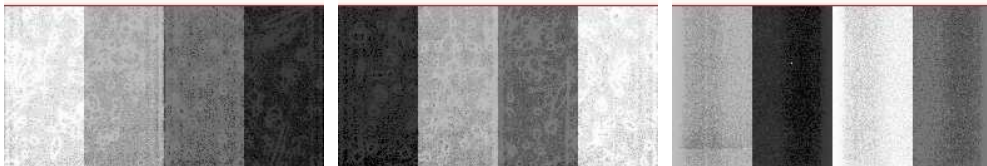


2.1.2 Bias

Chip 2

Chip 3

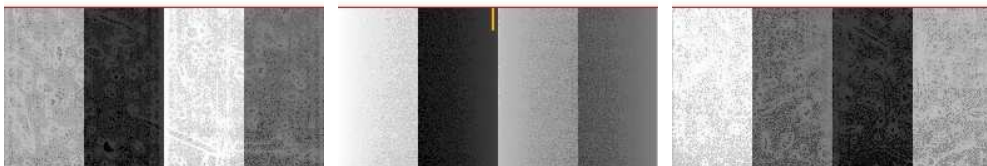
Chip 5



Chip 6

Chip 7

Chip 8



2.1.3 Parameters

obi_num	0
ascdsver	7.6.9
caldbver	3.2.3
date	2006-10-09T15:43:53
revision	3

sched_exp_time	5000.000000
ontime	5375.7692137361
ontime2	5375.7692137361
ontime3	5375.7692137361
ontime5	5375.7692137361
ontime6	5375.7692137361
ontime7	5375.7692137361
ontime8	5377.6102237999
l1events	126893

2.1.4 Events

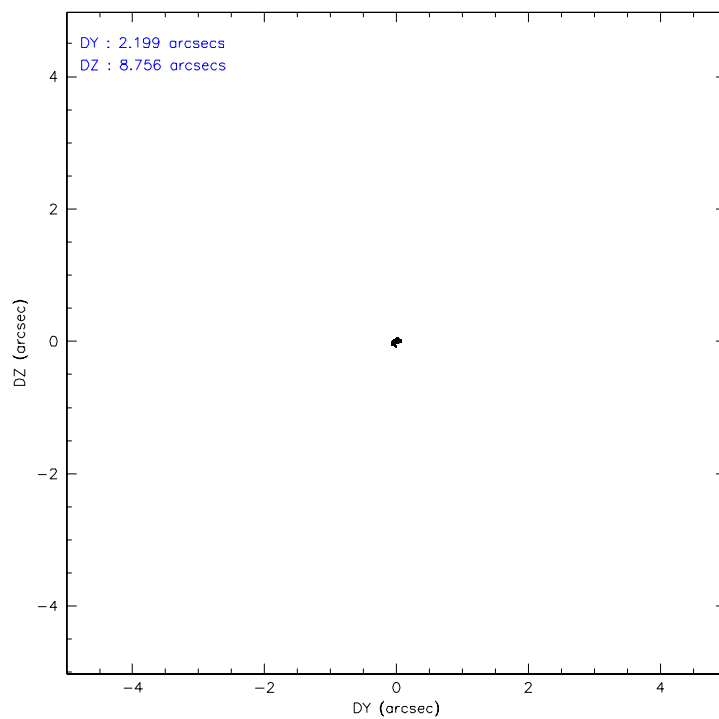
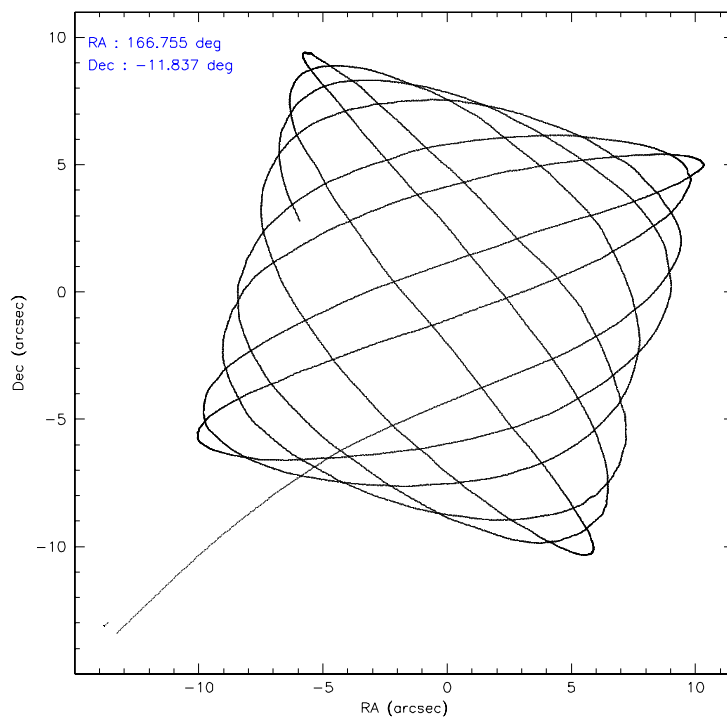
	ccd 2	ccd 3	ccd 5	ccd 6	ccd 7	ccd 8
level 1 events	17649	16897	28409	17959	22298	23681
rejected events	15413	14750	13442	15562	13354	18244
rejected %	87%	87%	47%	86%	59%	77%

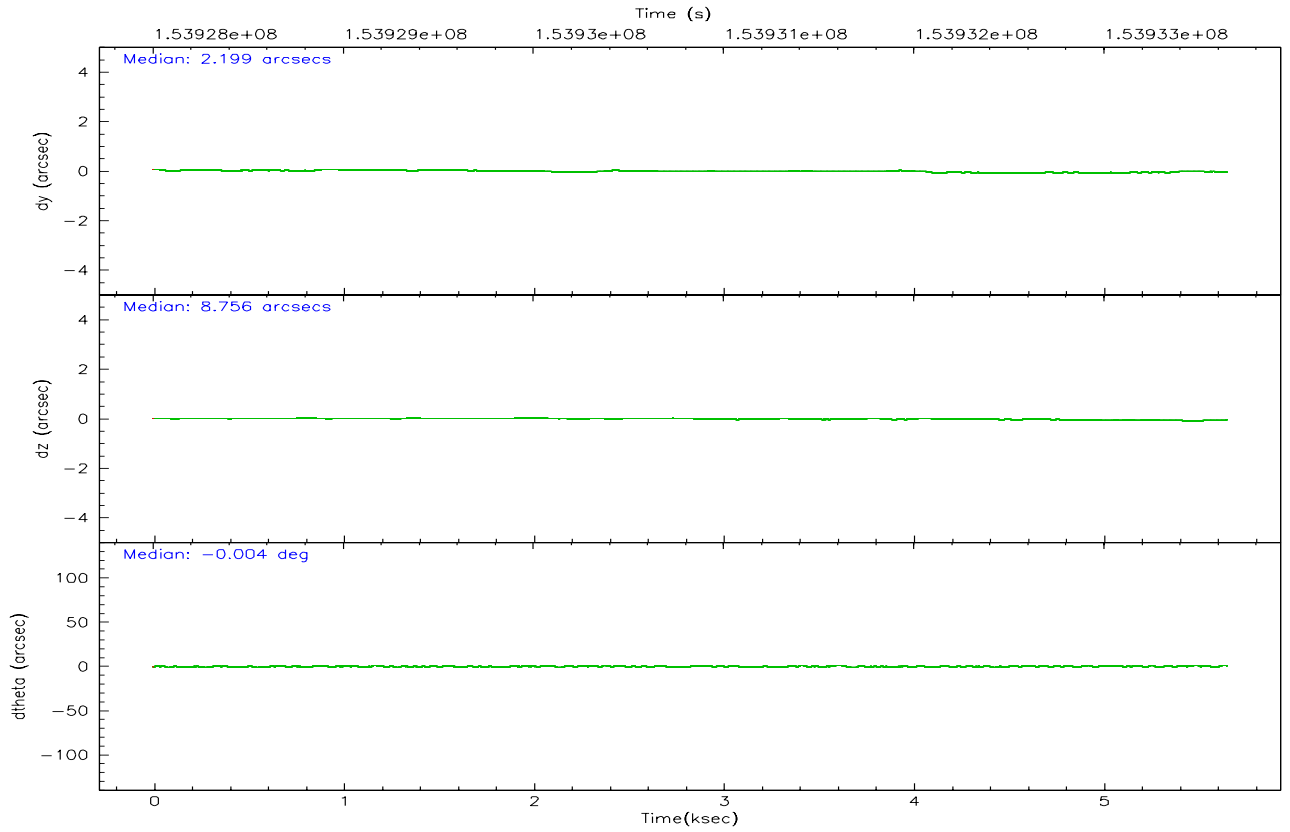
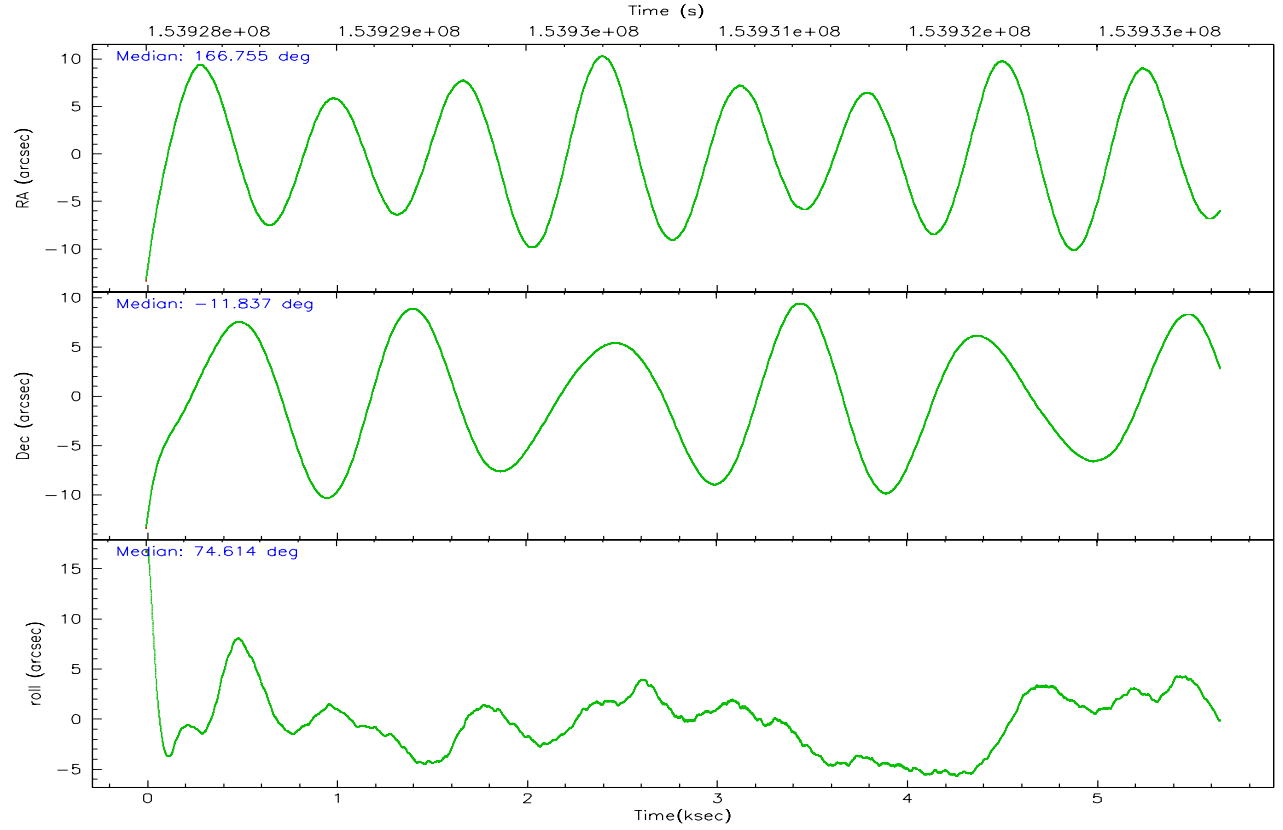
	ccd 2	ccd 3	ccd 5	ccd 6	ccd 7	ccd 8
grade 0 events	1008	915	5196	966	623	1695
	5%	5%	18%	5%	2%	7%
grade 1 events	13	8	191	12	14	12
	0%	0%	0%	0%	0%	0%
grade 2 events	402	416	3421	500	2196	1111
	2%	2%	12%	2%	9%	4%
grade 3 events	217	243	288	255	559	627
	1%	1%	1%	1%	2%	2%
grade 4 events	226	217	272	232	514	584
	1%	1%	0%	1%	2%	2%
grade 5 events	598	654	1188	754	1564	924
	3%	3%	4%	4%	7%	3%
grade 6 events	383	357	5795	444	5054	1422
	2%	2%	20%	2%	22%	6%
grade 7 events	14802	14087	12058	14796	11774	17306
	83%	83%	42%	82%	52%	73%

2.2 Compared Parameters

Parameter	Planned	Actual	Parameter	Planned	Actual
Instrument	ACIS	ACIS	Obspar format version number	6	6
Detector	ACIS-235678	ACIS-235678	Obspar file type	PREDICTED	ACTUAL
Grating	NONE	NONE	Obspar update status	NONE	UPDATED
Data mode	FAINT	FAINT	Number of optional ACIS chips dropped	0	0
Observation mode	POINTING	POINTING	On-chip summing requested	N	N
Pointing RA	166.762474	166.7551073932547	Subarray requested	1/2	1/2
Pointing Dec	-11.863357	-11.83702692800377	Subarray start row	0	257
Pointing Roll	74.464917	74.6200837696466	Subarray row count	1024	512
SIM focus pos (mm)	-0.684267	-0.6828225247311905	Alternating exposures requested	N	N
SIM defocus (mm)	0	0.001444936568705701	Primary exposure time	0.000000	1.8
SIM translation stage pos (mm)	-190.132523	-190.1425803651734			
SIM translation stage offset (mm)	0	0.01005778216563158			
Observation start time	153928647.184000	153927451.59466			
Observation start date	2002-11-17T13:56:23	2002-11-17T13:37:31			
Observation end time	153933647.184000	153934403.14495			
Observation end date	2002-11-17T15:19:43	2002-11-17T15:33:23			
Read mode	TIMED	TIMED			

2.3 Aspect



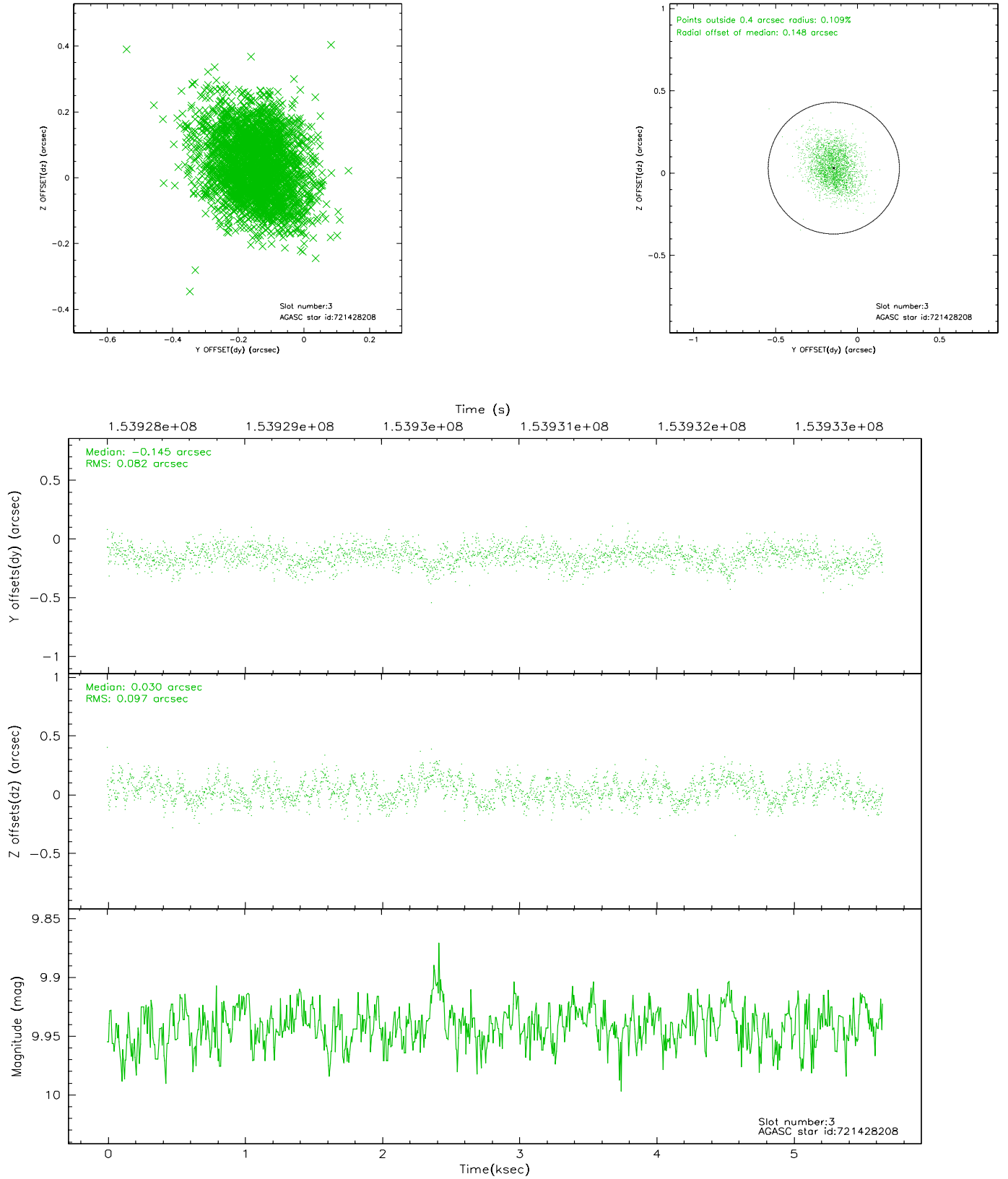


Slot Statistics

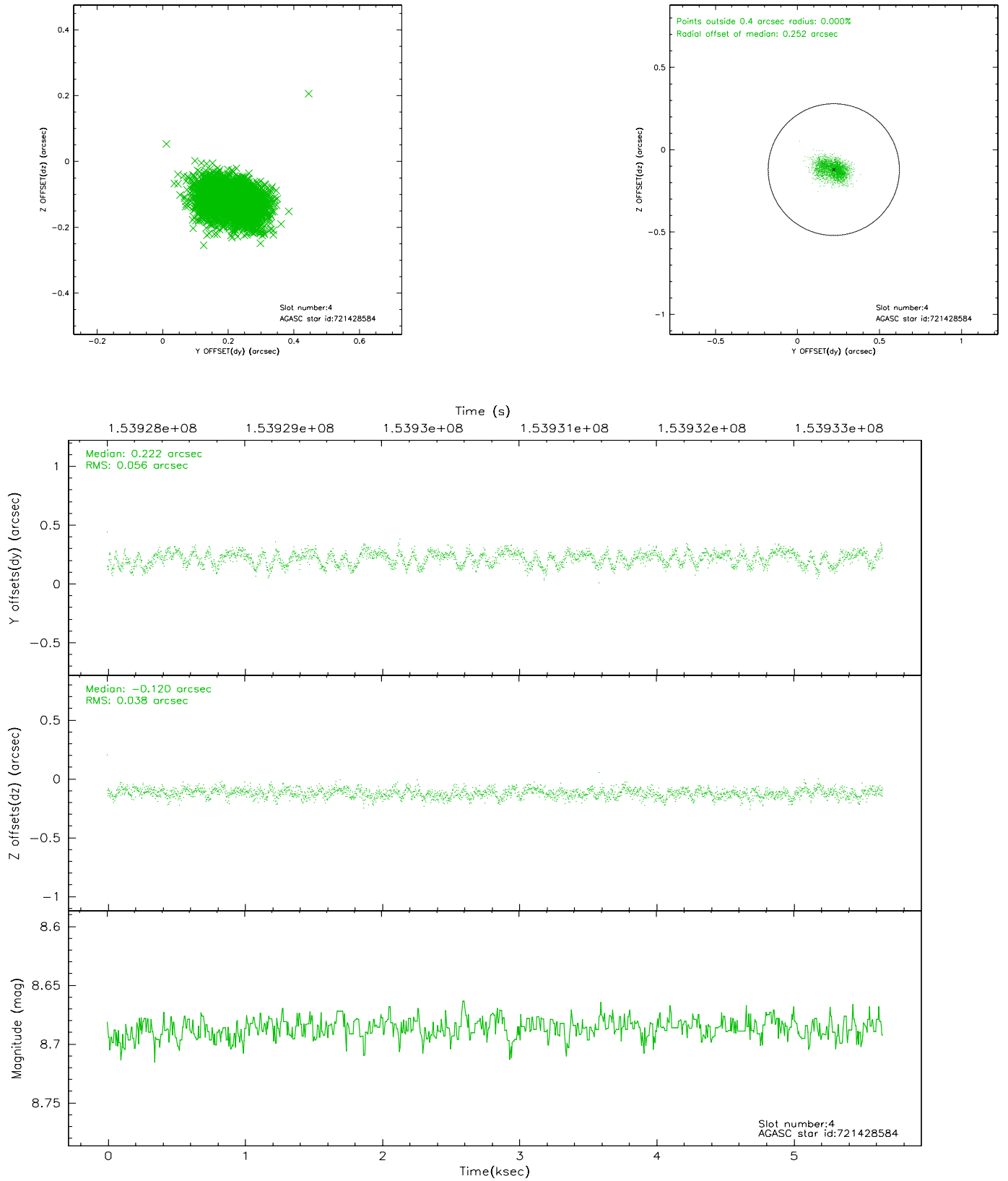
slot	status	id	mag	n_pts	med_dy	med_dz	dr1	dr2	ra	dec	mean_y	mean_z
0	FID	ACIS-S-2	7.11	1380	-0.020	0.008	0.006	0.011	0.000000	0.000000	-754.84	-1729.90
1	FID	ACIS-S-4	7.20	1380	-0.042	0.007	0.005	0.009	0.000000	0.000000	2157.94	177.48
2	FID	ACIS-S-5	7.24	1379	0.030	-0.006	0.006	0.010	0.000000	0.000000	-1806.27	172.36
3	GUIDE	721428208	9.94	2748	-0.145	0.030	0.134	0.216	167.218076	-11.341832	2237.56	-1046.41
4	GUIDE	721428584	8.69	2758	0.222	-0.120	0.073	0.115	166.389712	-12.165494	-1400.04	971.98
5	GUIDE	721433376	8.03	2759	0.068	-0.264	0.077	0.133	166.223582	-11.759425	-151.55	1930.34
6	GUIDE	721428688	9.13	2759	-0.114	0.185	0.092	0.152	167.280044	-11.370452	2196.47	-1283.81
7	GUIDE	721427032	9.19	2757	-0.023	0.169	0.087	0.141	167.356230	-12.055223	-107.55	-2199.57

2.4 Star Slots

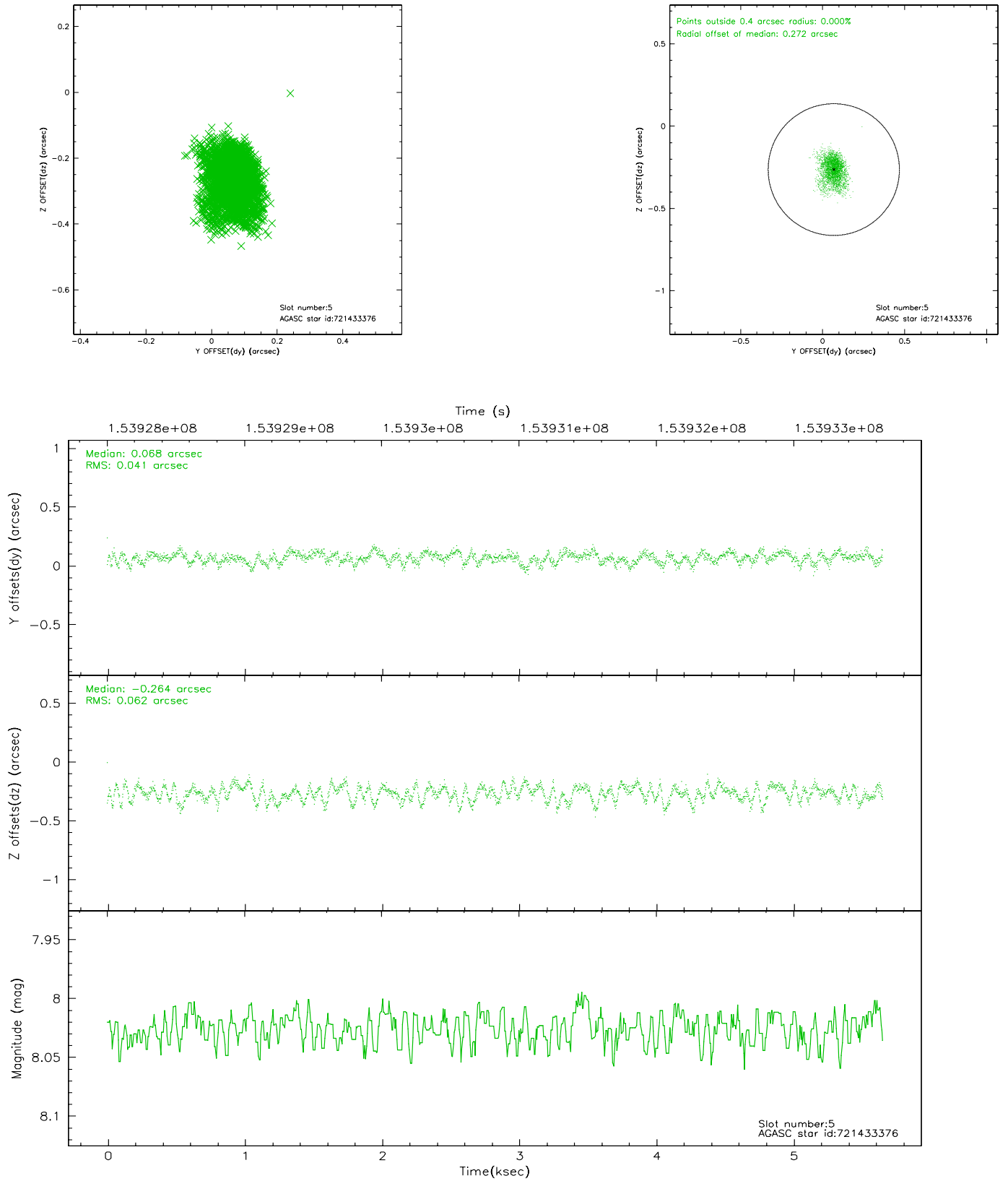
2.4.1 Slot 3



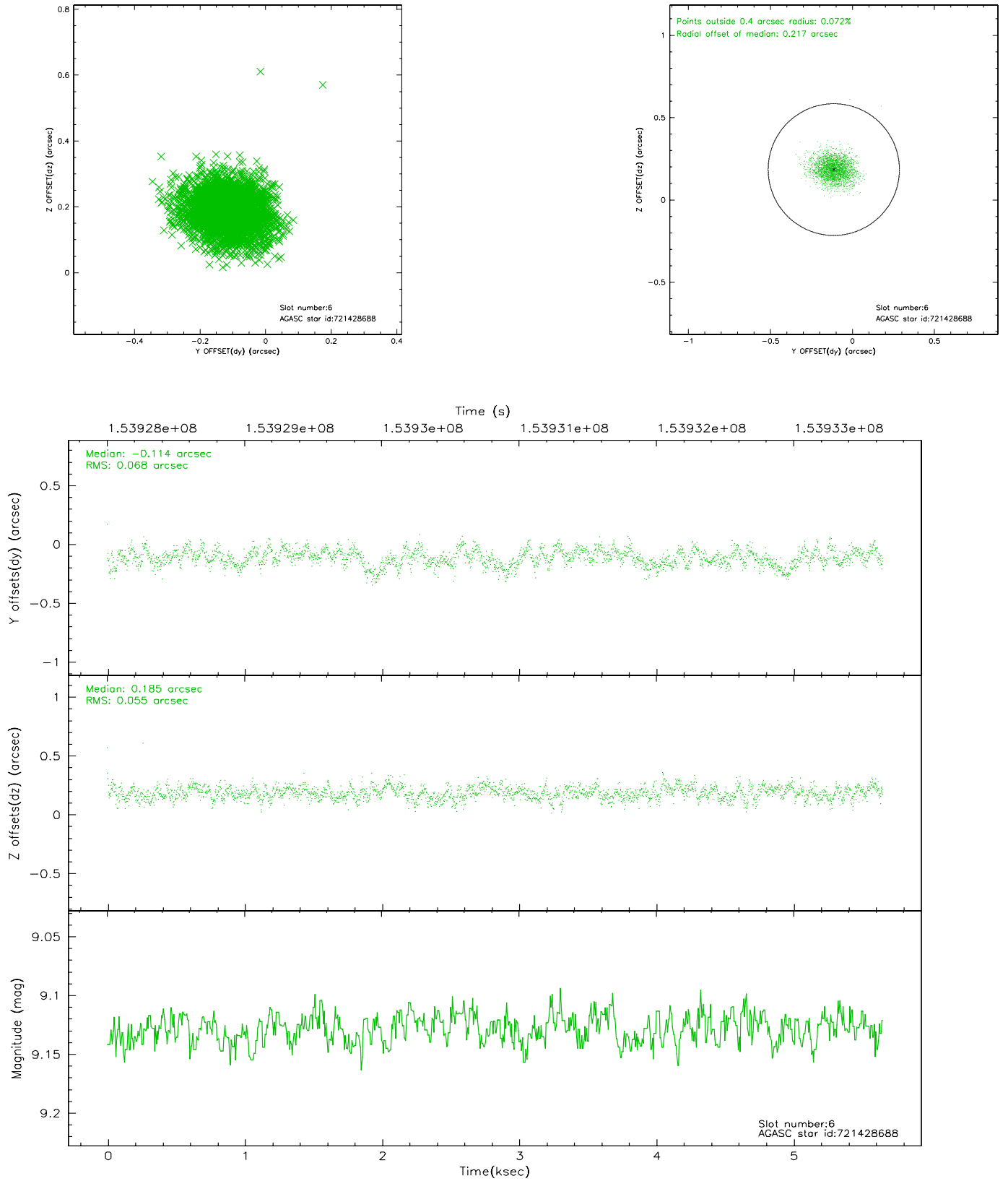
2.4.2 Slot 4



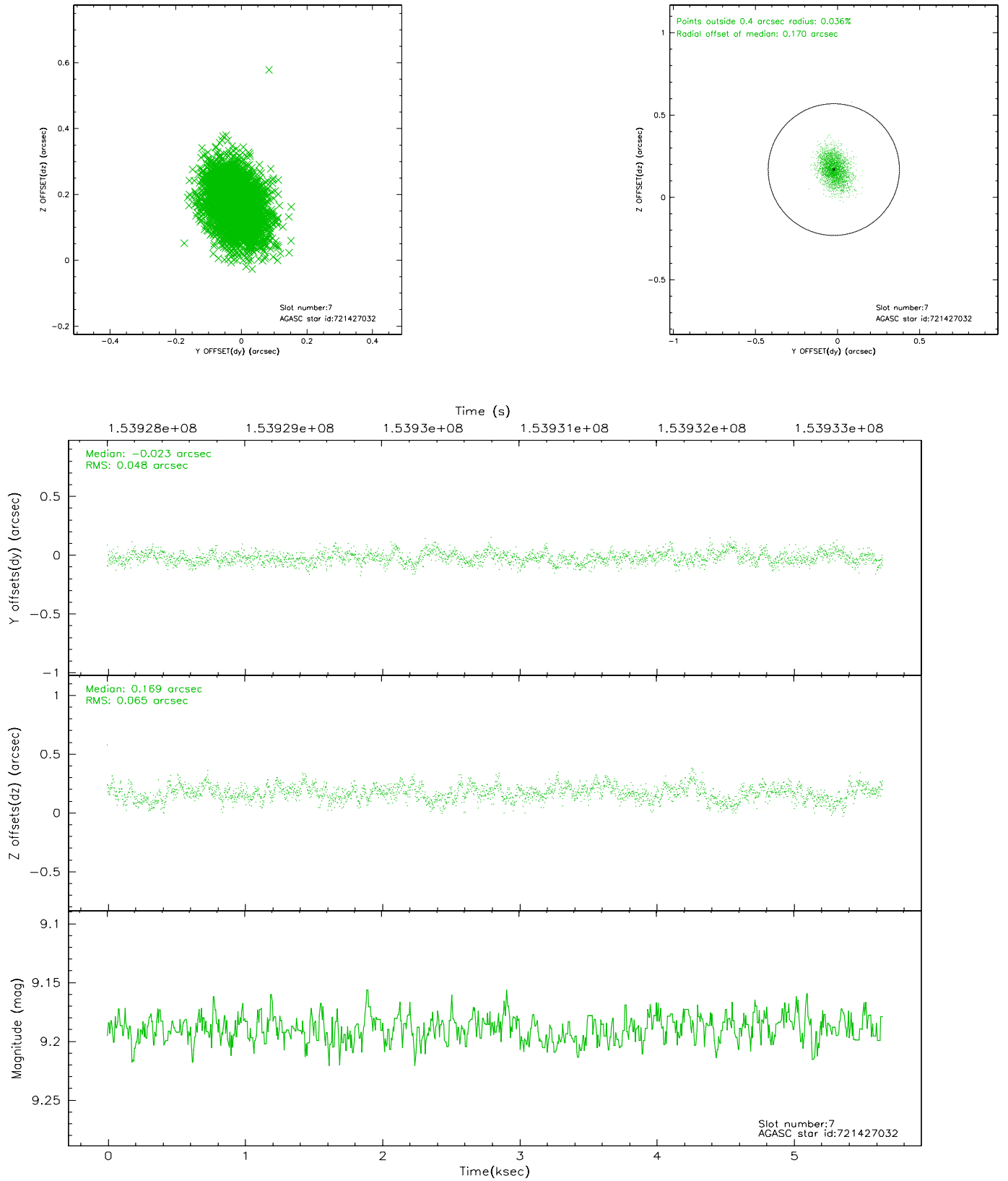
2.4.3 Slot 5



2.4.4 Slot 6

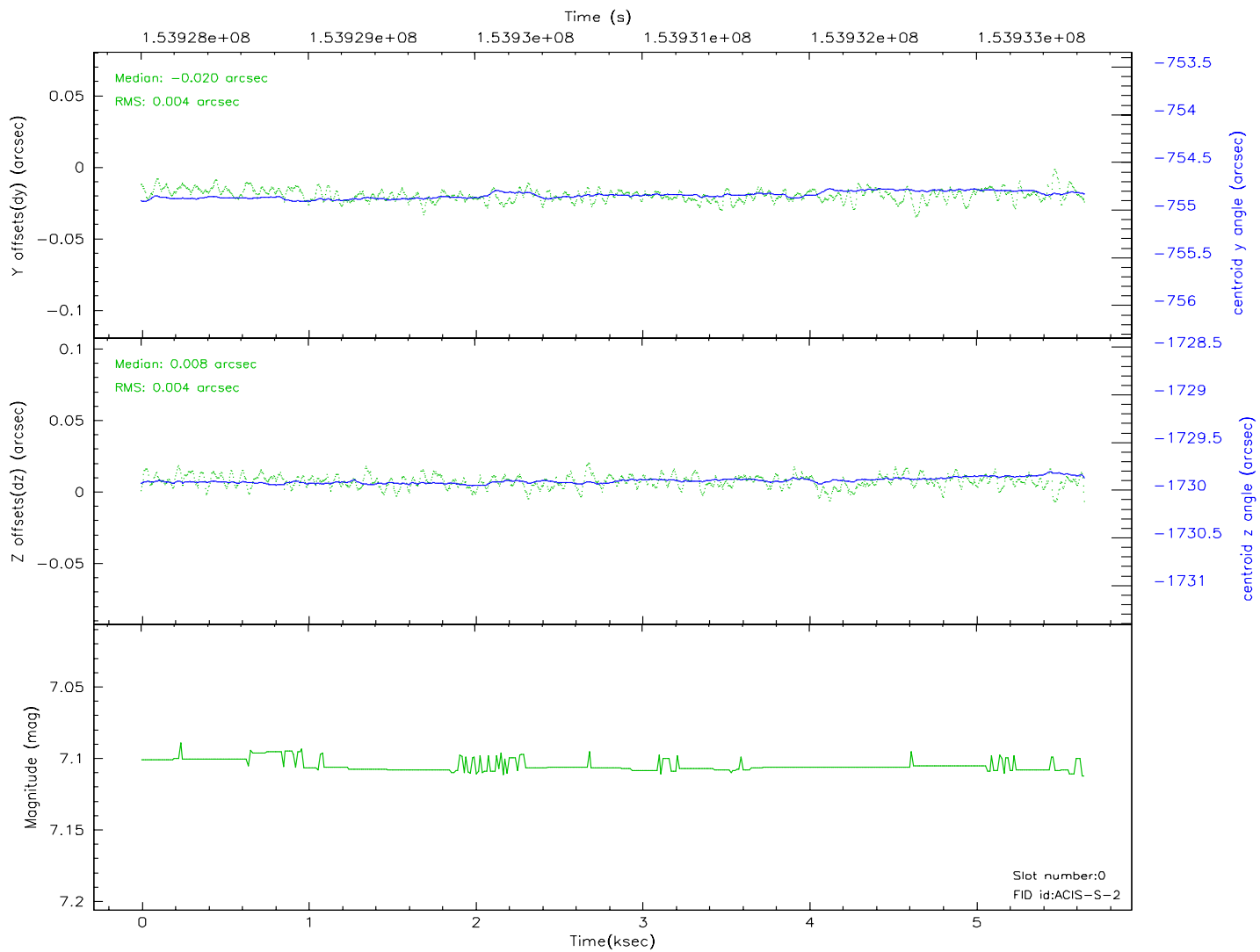
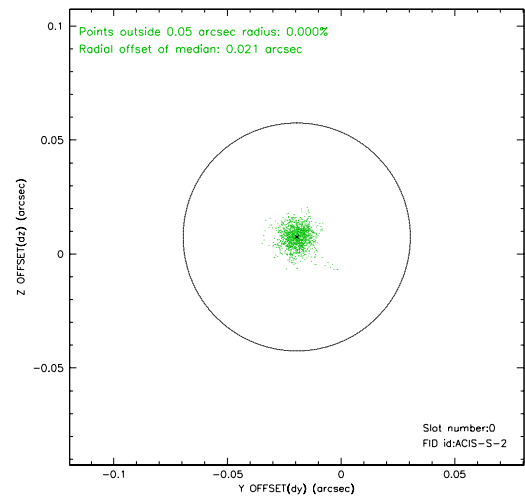
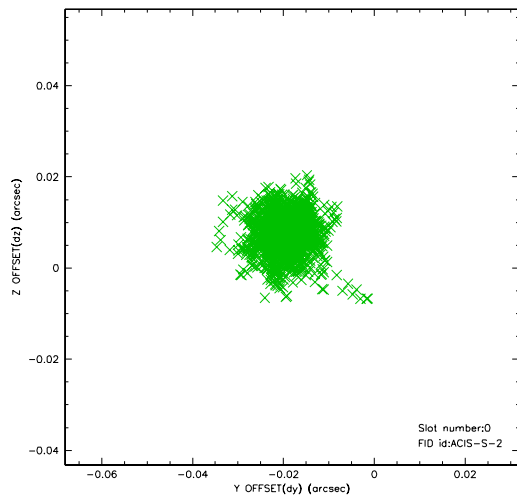


2.4.5 Slot 7

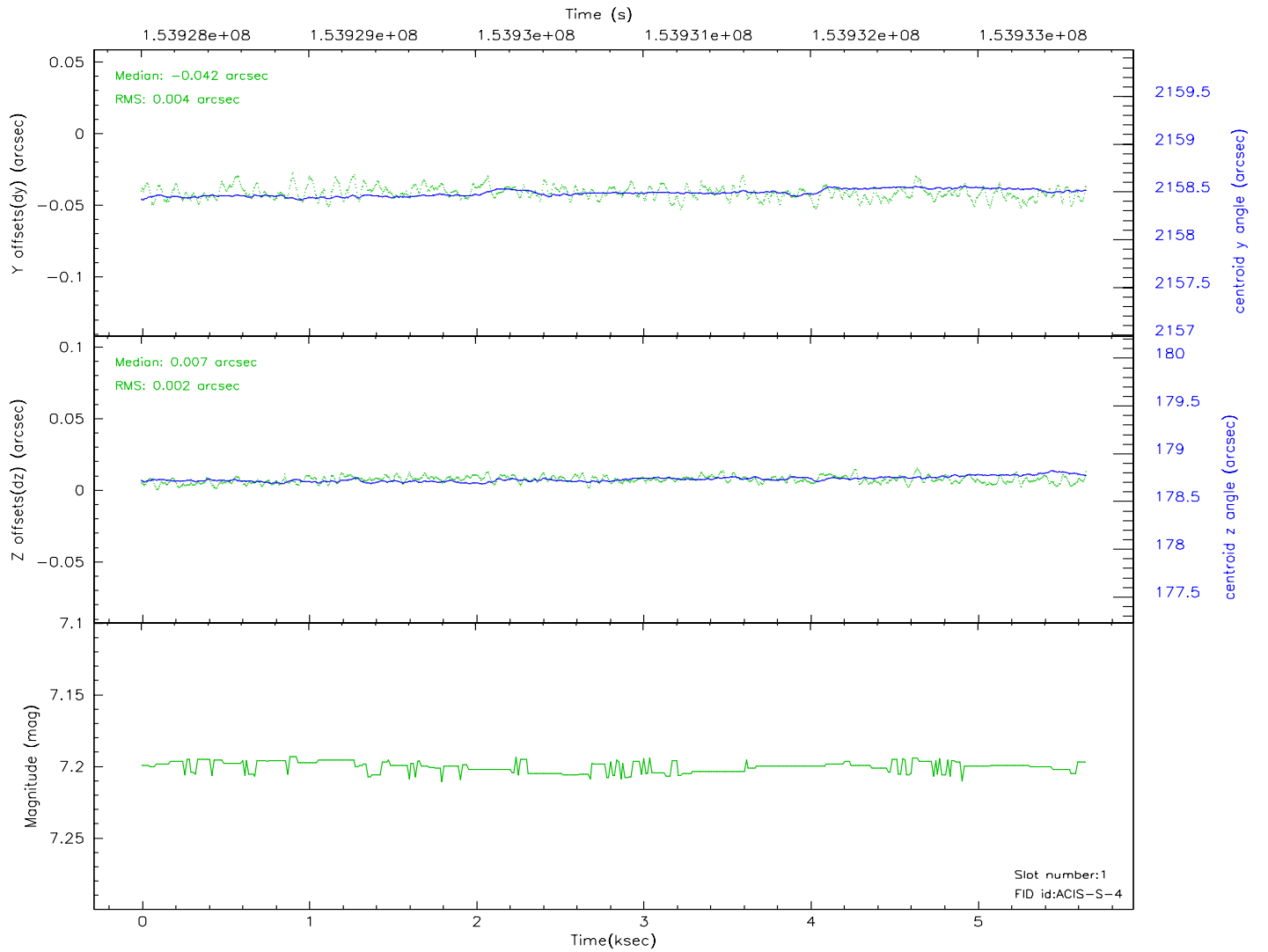
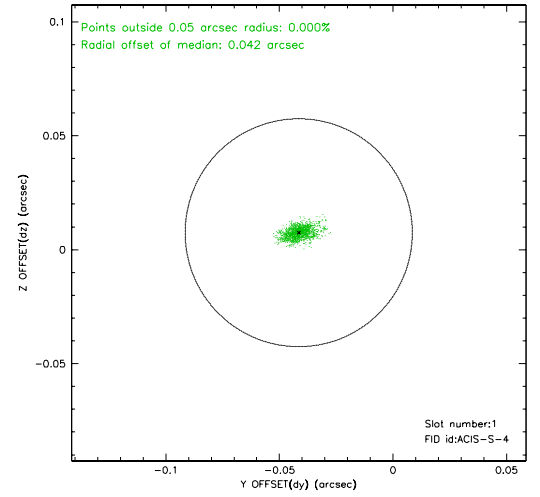
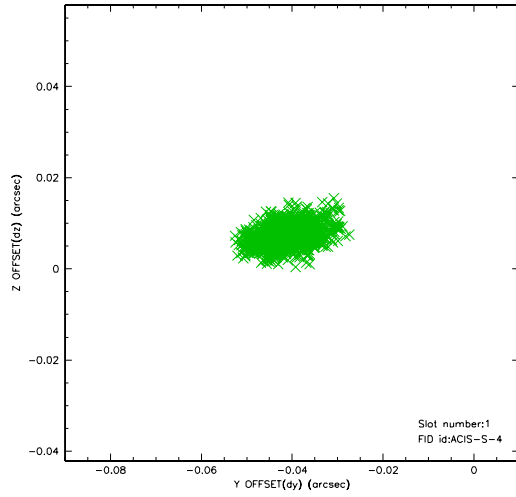


2.5 FID Slots

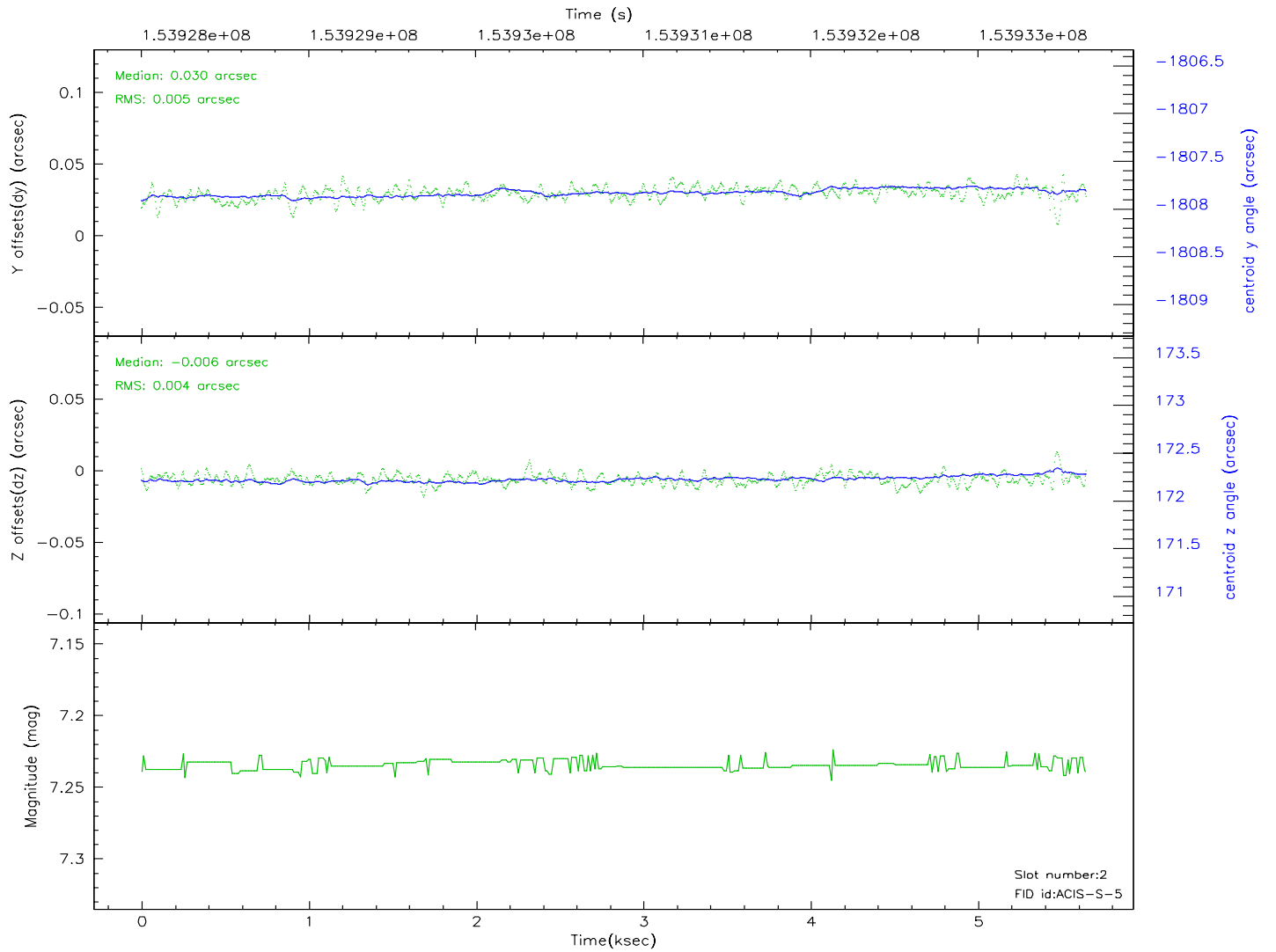
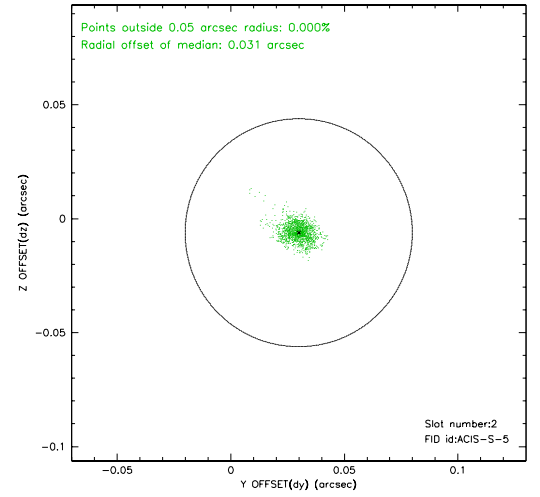
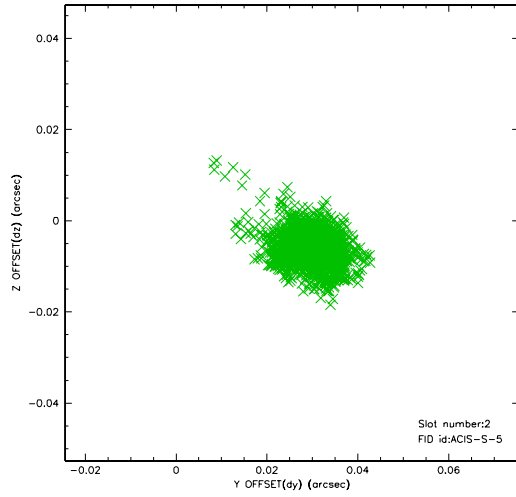
2.5.1 Slot 0



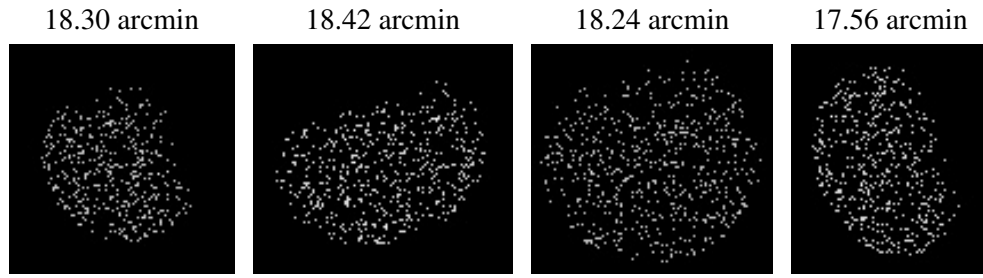
2.5.2 Slot 1



2.5.3 Slot 2



3 Point Sources



A Summary

A.1 Status

V&V Scientist	Joy Nichols
V&V Date (YYYY-MM-DD)	2006.10.11
V&V Edition	1
V&V Disposition and Status	OK
V&V Charge Time	5.373

A.2 Comments