

V&V Reference Report

L2 ASCDS Version : 7.6.9

Observation 3280 - L2 Version 001
Chandra X-Ray Center

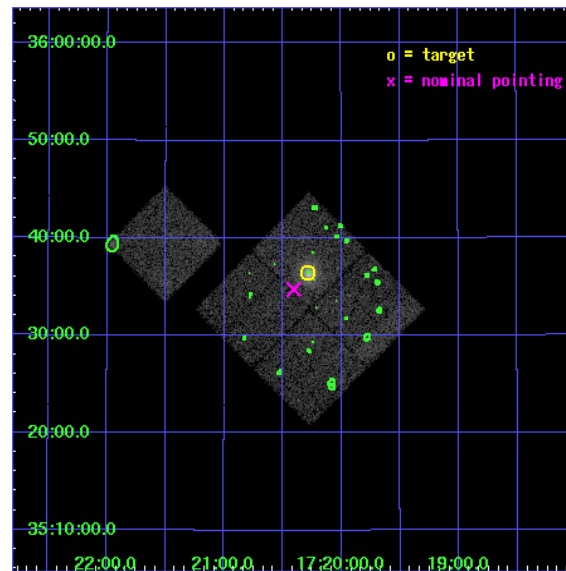
L2 Processing Date : Oct 11 2006

Contents

1	Front	2
2	OBI	3
2.1	OBI	3
2.1.1	Images	3
2.1.2	Bias	3
2.1.3	Parameters	4
2.1.4	Events	4
2.2	Compared Parameters	5
2.3	Aspect	6
2.4	Star Slots	9
2.4.1	Slot 3	9
2.4.2	Slot 4	10
2.4.3	Slot 5	11
2.4.4	Slot 6	12
2.4.5	Slot 7	13
2.5	FID Slots	14
2.5.1	Slot 0	14
2.5.2	Slot 1	15
2.5.3	Slot 2	16
3	Point Sources	17
A	Summary	18
A.1	Status	18
A.2	Comments	18

1 Front

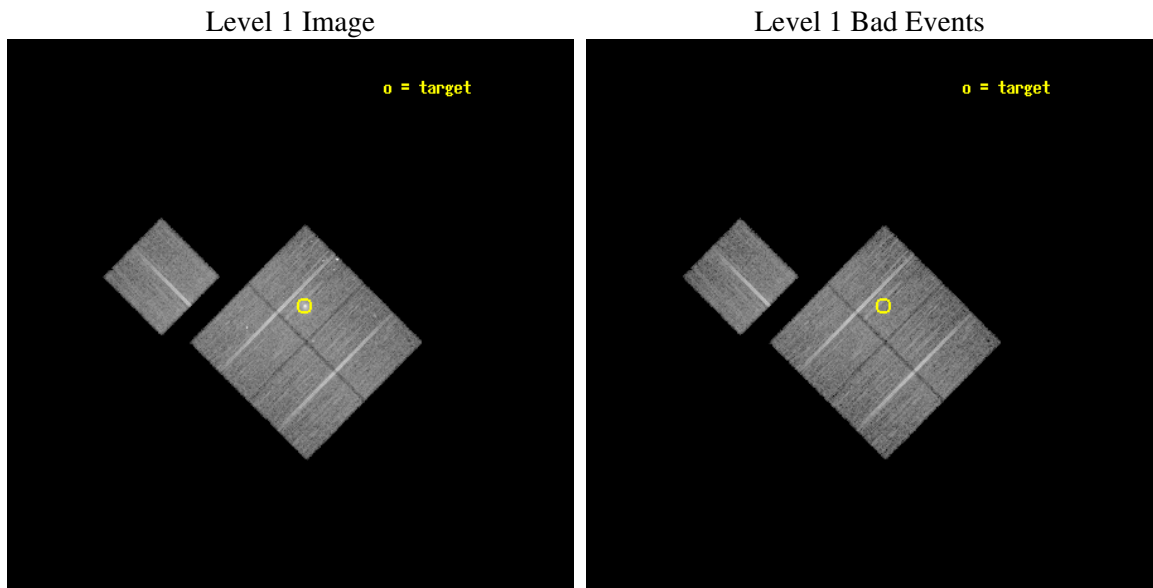
seq_num	800280
obs_id	3280
title	MACS: THE X-RAY PROPERTIES OF THE MOST MASSIVE GALAXY CLUSTERS AT $Z>0.3$
observer	Dr Harald Ebeling
object	MACSJ1720.2+3536
dtcycle	0
cycle	P
ra_targ	260.070417
dec_targ	35.606944
ra_nom	260.10131681849
dec_nom	35.578893004307
roll_nom	314.79631565172
revision	2
ontime	21117.199959397
livetime	20841.288195671
ontime0	21107.777018875
ontime1	21107.776959032
ontime2	21114.058979243
ontime3	21117.199959397
ontime6	21117.199959397
l2events	57036



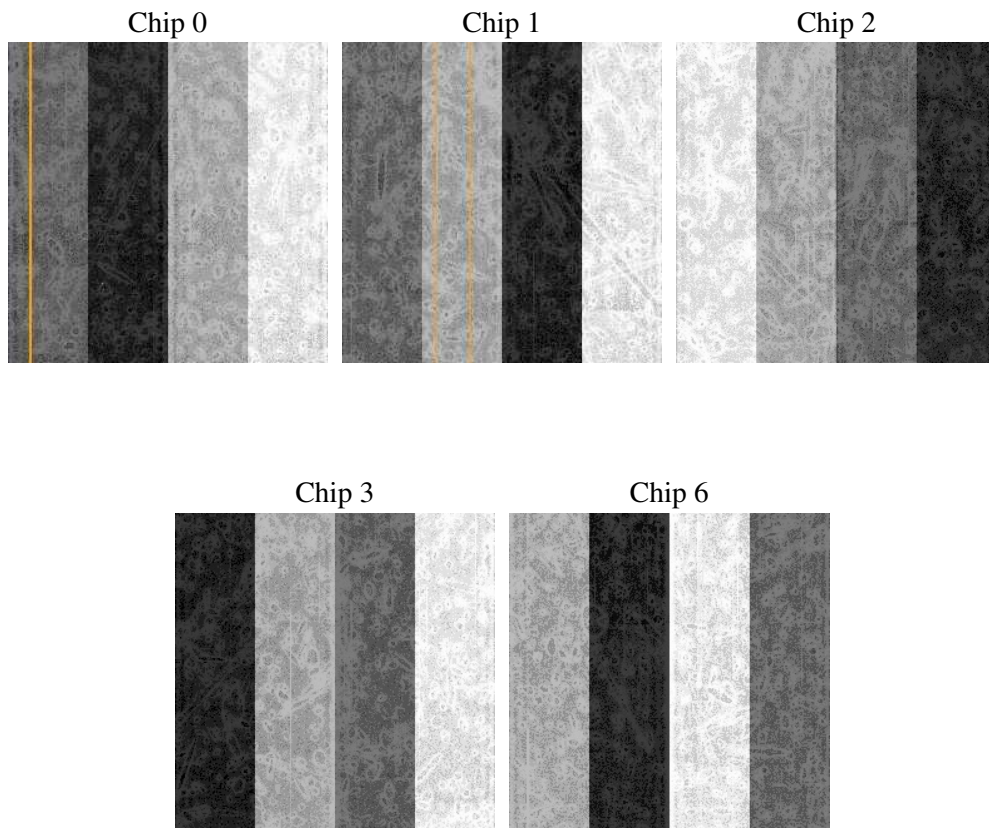
2 OBI

2.1 OBI

2.1.1 Images



2.1.2 Bias



2.1.3 Parameters

obi_num	1
ascdsver	7.6.9
caldbver	3.2.3
date	2006-10-12T00:34:45
revision	2

sched_exp_time	21000.000000
ontime	21123.229658604
ontime0	21113.806718081
ontime1	21113.806658238
ontime2	21120.088678449
ontime3	21123.229658604
ontime6	21123.229658604
l1events	553339

2.1.4 Events

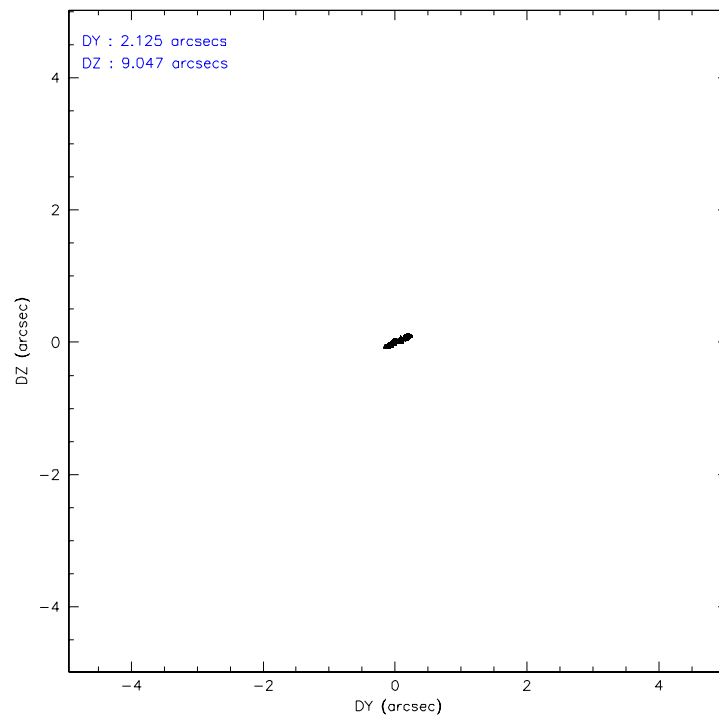
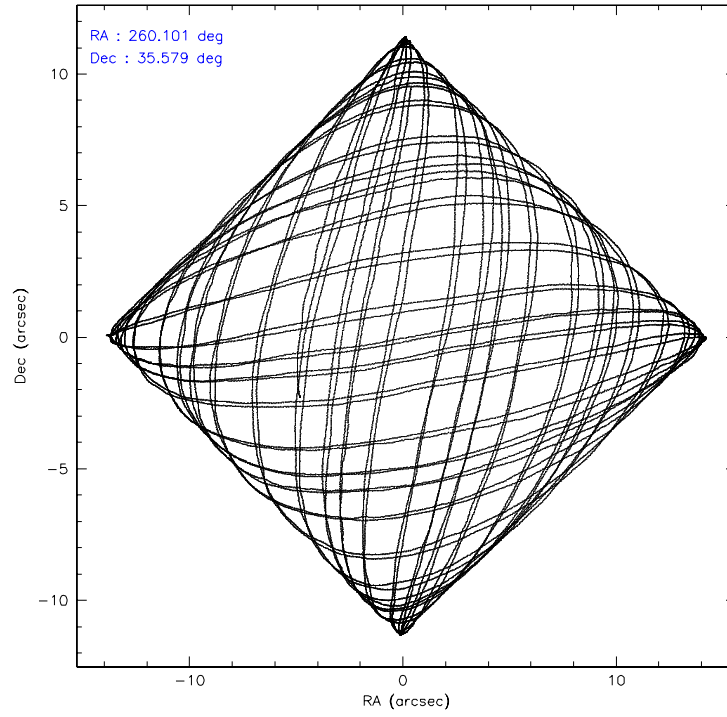
	ccd 0	ccd 1	ccd 2	ccd 3	ccd 6
level 1 events	104987	103092	115925	120786	108549
rejected events	93525	90199	104442	101093	96815
rejected %	89%	87%	90%	83%	89%

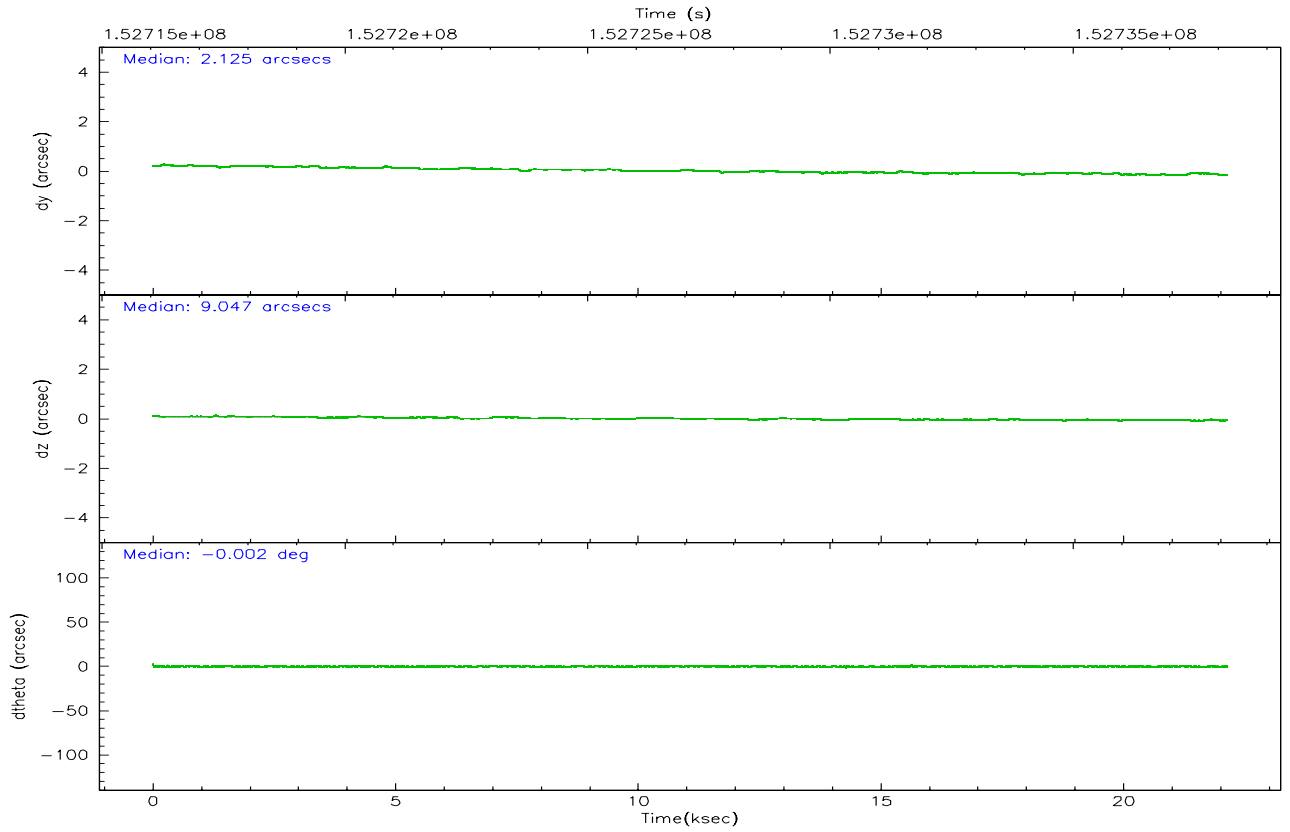
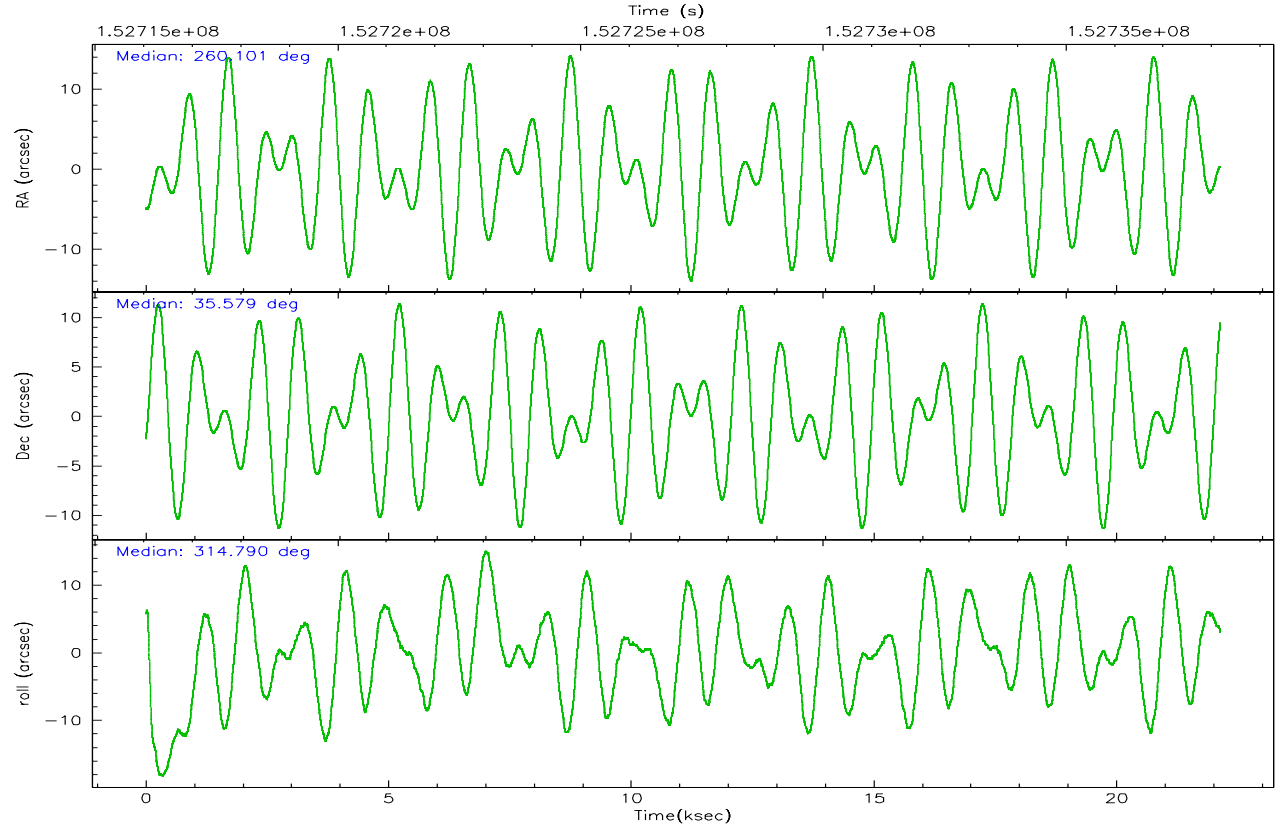
	ccd 0	ccd 1	ccd 2	ccd 3	ccd 6
grade 0 events	4170	4960	4516	11524	4290
	3%	4%	3%	9%	3%
grade 1 events	54	56	64	90	50
	0%	0%	0%	0%	0%
grade 2 events	2568	2681	2514	3023	2411
	2%	2%	2%	2%	2%
grade 3 events	1325	1447	1210	1451	1280
	1%	1%	1%	1%	1%
grade 4 events	1247	1363	1270	1480	1391
	1%	1%	1%	1%	1%
grade 5 events	3689	3887	3439	4214	4157
	3%	3%	2%	3%	3%
grade 6 events	2156	2447	1976	2219	2366
	2%	2%	1%	1%	2%
grade 7 events	89778	86251	100936	96785	92604
	85%	83%	87%	80%	85%

2.2 Compared Parameters

Parameter	Planned	Actual	Parameter	Planned	Actual
Instrument	ACIS	ACIS	Obspar format version number	6	6
Detector	ACIS-01236	ACIS-01236	Obspar file type	PREDICTED	ACTUAL
Grating	NONE	NONE	Obspar update status	NONE	UPDATED
Data mode	VFAINT	VFAINT	Number of optional ACIS chips dropped	0	0
Observation mode	POINTING	POINTING	On-chip summing requested	N	N
Pointing RA	260.068789	260.1013168184891	Subarray requested	NONE	NONE
Pointing Dec	35.585978	35.57889300430735	Alternating exposures requested	N	N
Pointing Roll	314.606554	314.7963156517211	Primary exposure time	0.000000	3.1
SIM focus pos (mm)	-0.782348	-0.7809083437167272			
SIM defocus (mm)	0	0.001439871863259334			
SIM translation stage pos (mm)	-227.742463	-227.734108438797			
SIM translation stage offset (mm)	-5.85	-5.858344564132665			
Observation start time	152717184.184000	152715746.76926			
Observation start date	2002-11-03T13:25:20	2002-11-03T13:02:26			
Observation end time	152738184.184000	152738567.8827			
Observation end date	2002-11-03T19:15:20	2002-11-03T19:22:47			
Read mode	TIMED	TIMED			

2.3 Aspect



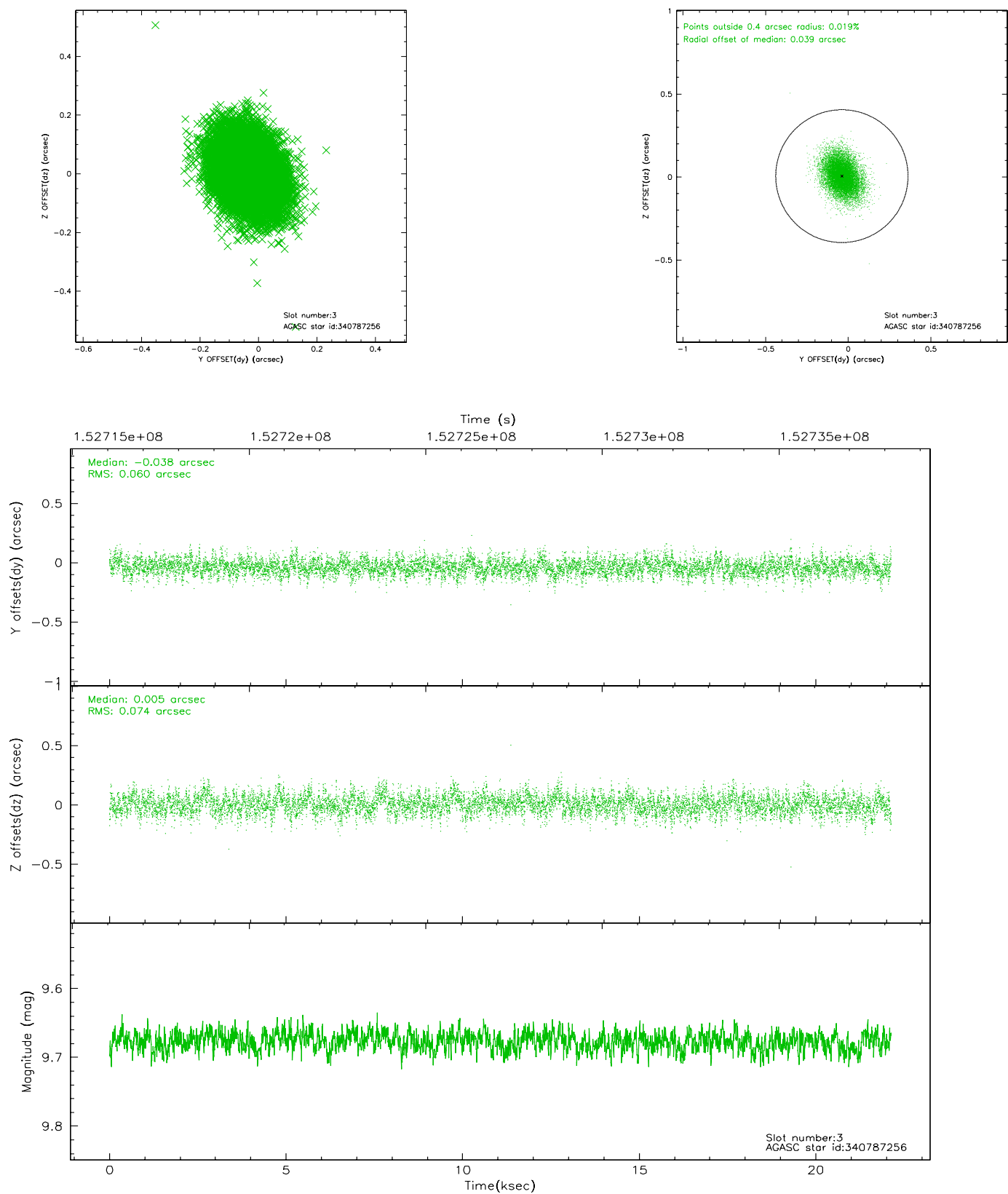


Slot Statistics

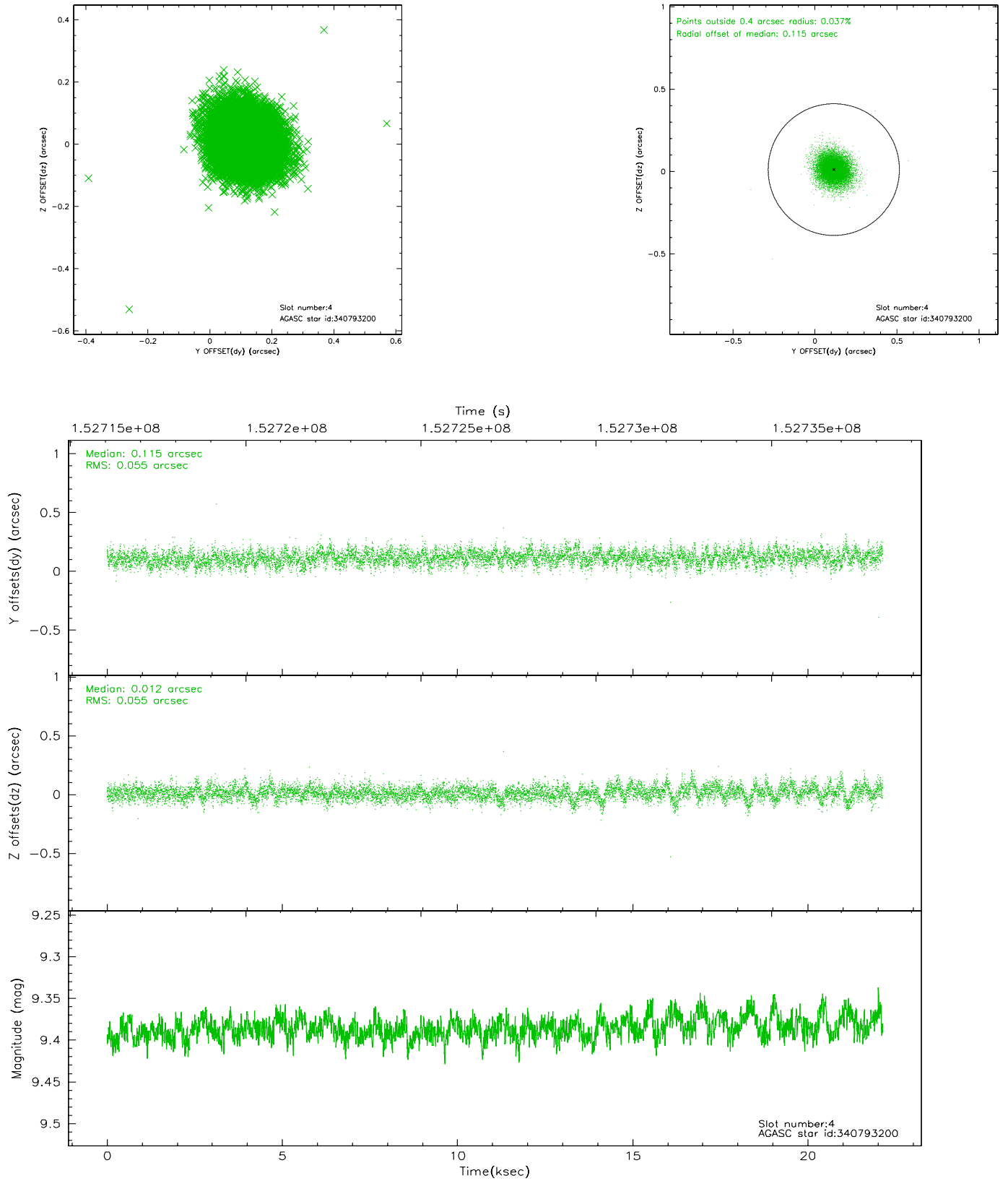
slot	status	id	mag	n_pts	med_dy	med_dz	dr1	dr2	ra	dec	mean_y	mean_z
0	FID	ACIS-I-1	7.24	5399	0.009	0.018	0.007	0.012	0.000000	0.000000	937.56	-952.73
1	FID	ACIS-I-5	7.23	5399	-0.096	0.049	0.006	0.010	0.000000	0.000000	-1810.55	944.71
2	FID	ACIS-I-6	7.25	5398	-0.004	0.004	0.007	0.012	0.000000	0.000000	402.94	1589.33
3	GUIDE	340787256	9.68	10794	-0.038	0.005	0.100	0.166	259.719230	35.158590	372.82	-1811.35
4	GUIDE	340793200	9.39	10791	0.115	0.012	0.081	0.135	260.300981	35.203623	1460.45	-479.55
5	GUIDE	341318216	9.77	10793	-0.051	0.052	0.108	0.174	259.692720	35.669893	-987.39	-569.39
6	GUIDE	341325224	8.87	10794	-0.021	0.042	0.074	0.118	260.448683	35.800602	228.45	1333.95
7	GUIDE	341325128	8.48	10796	-0.002	-0.111	0.062	0.099	260.031346	35.684277	-327.56	170.80

2.4 Star Slots

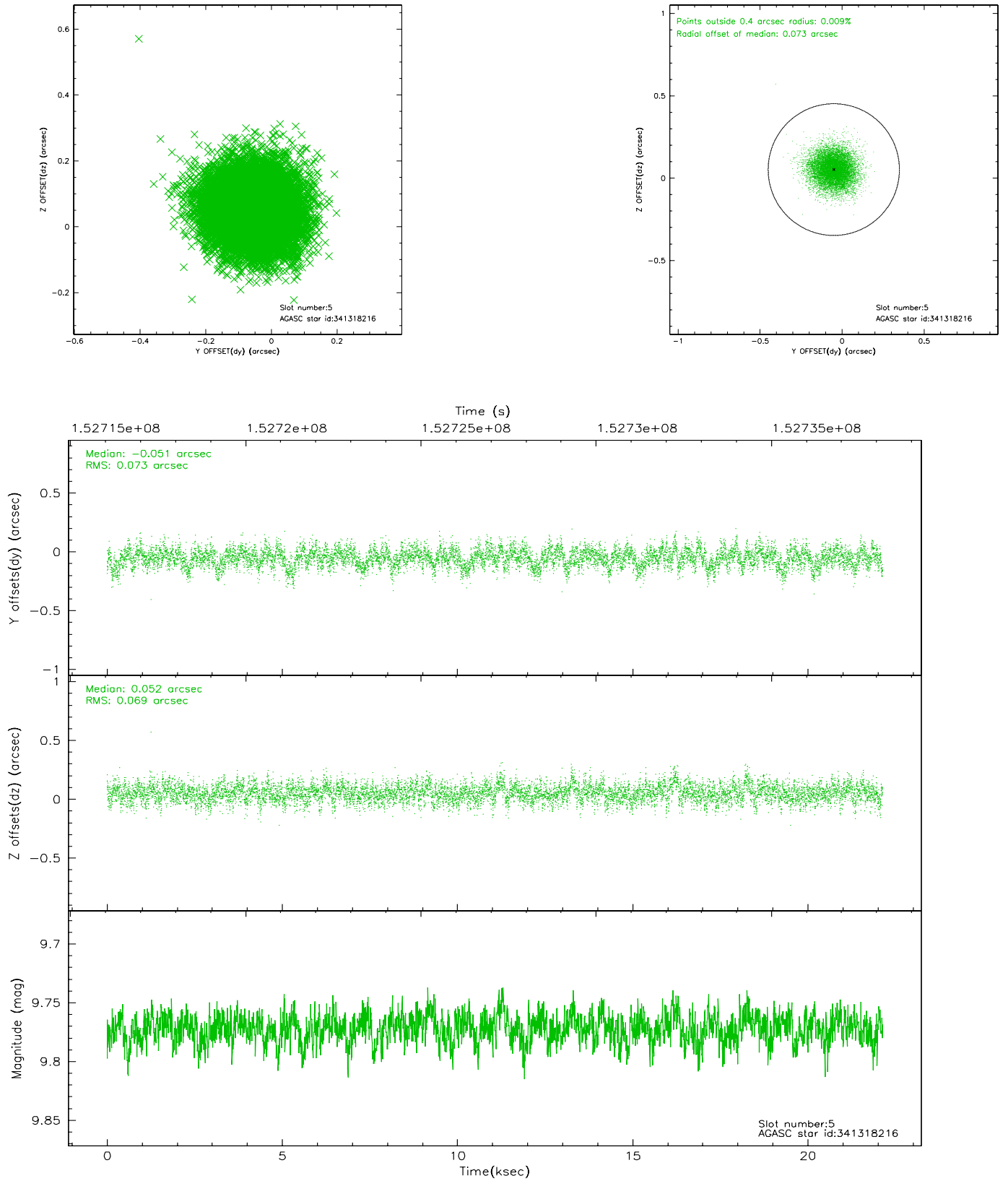
2.4.1 Slot 3



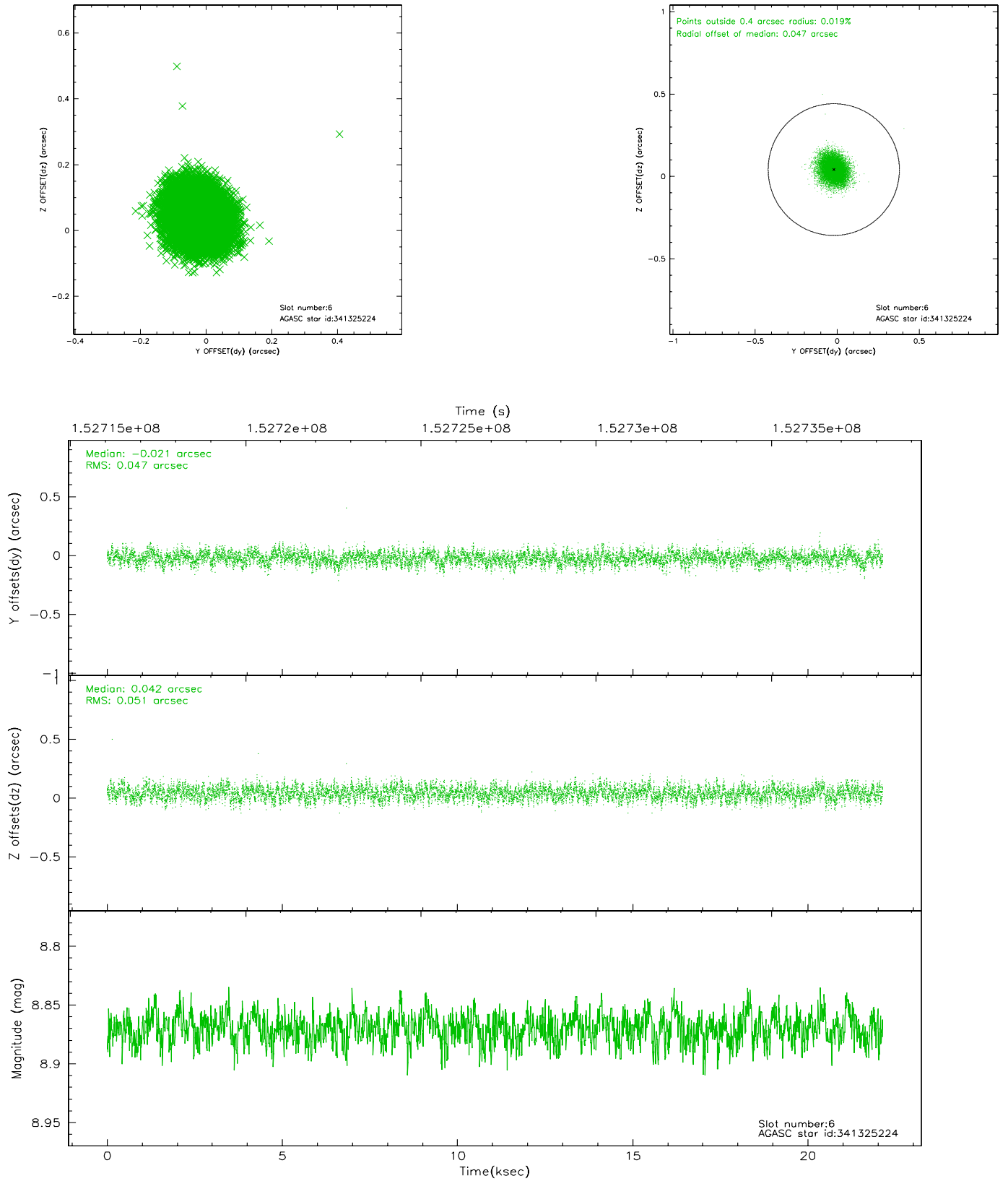
2.4.2 Slot 4



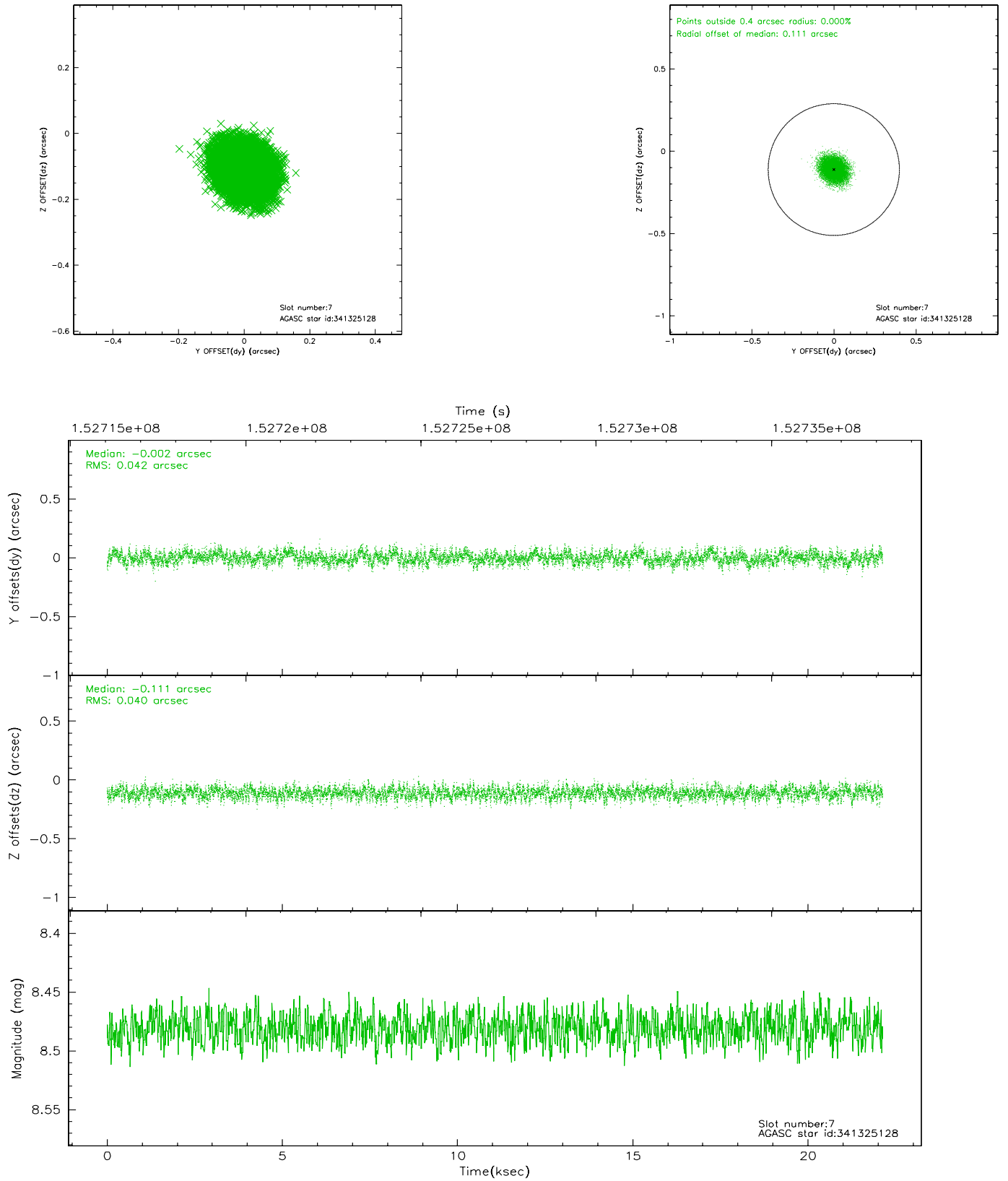
2.4.3 Slot 5



2.4.4 Slot 6

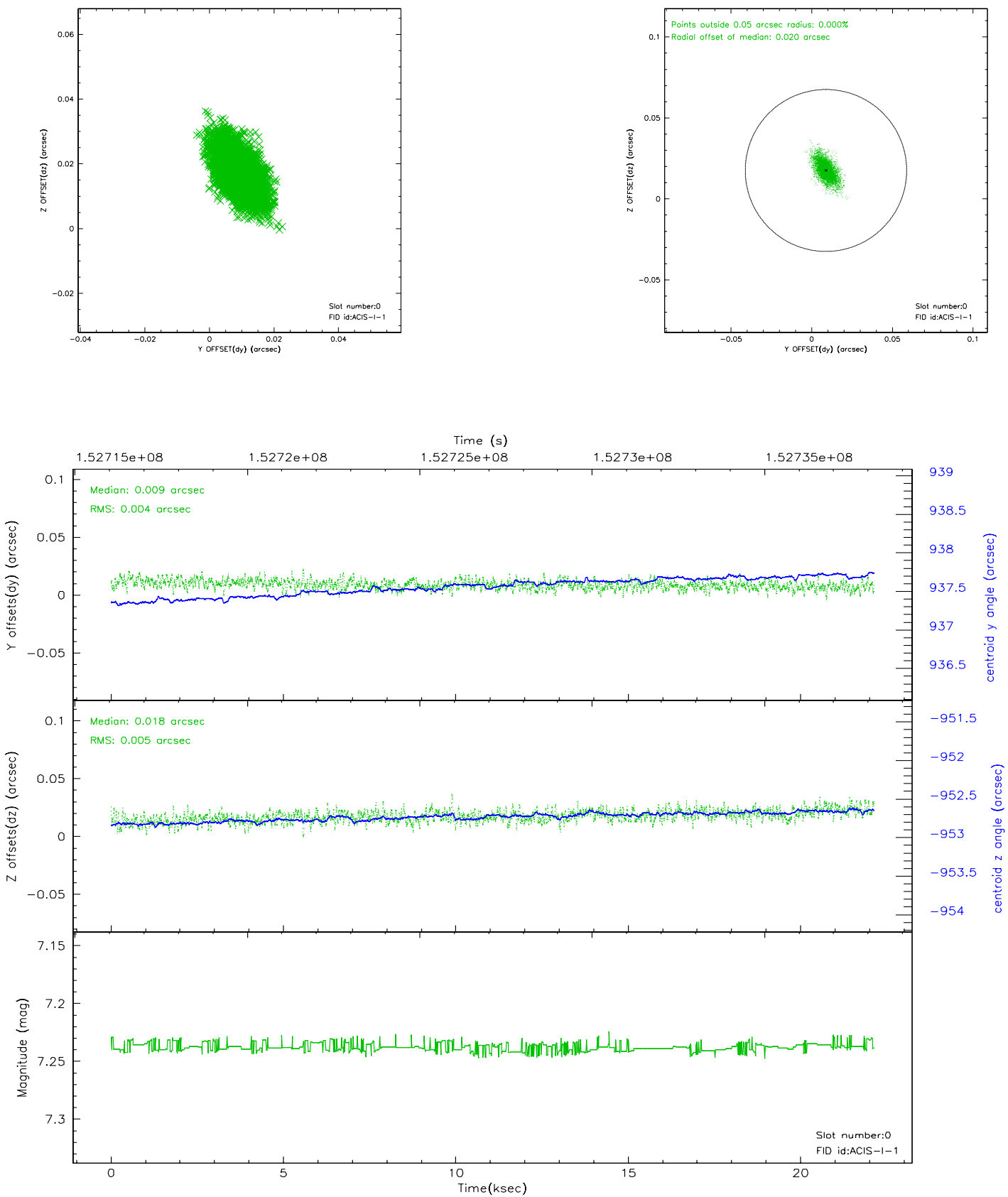


2.4.5 Slot 7

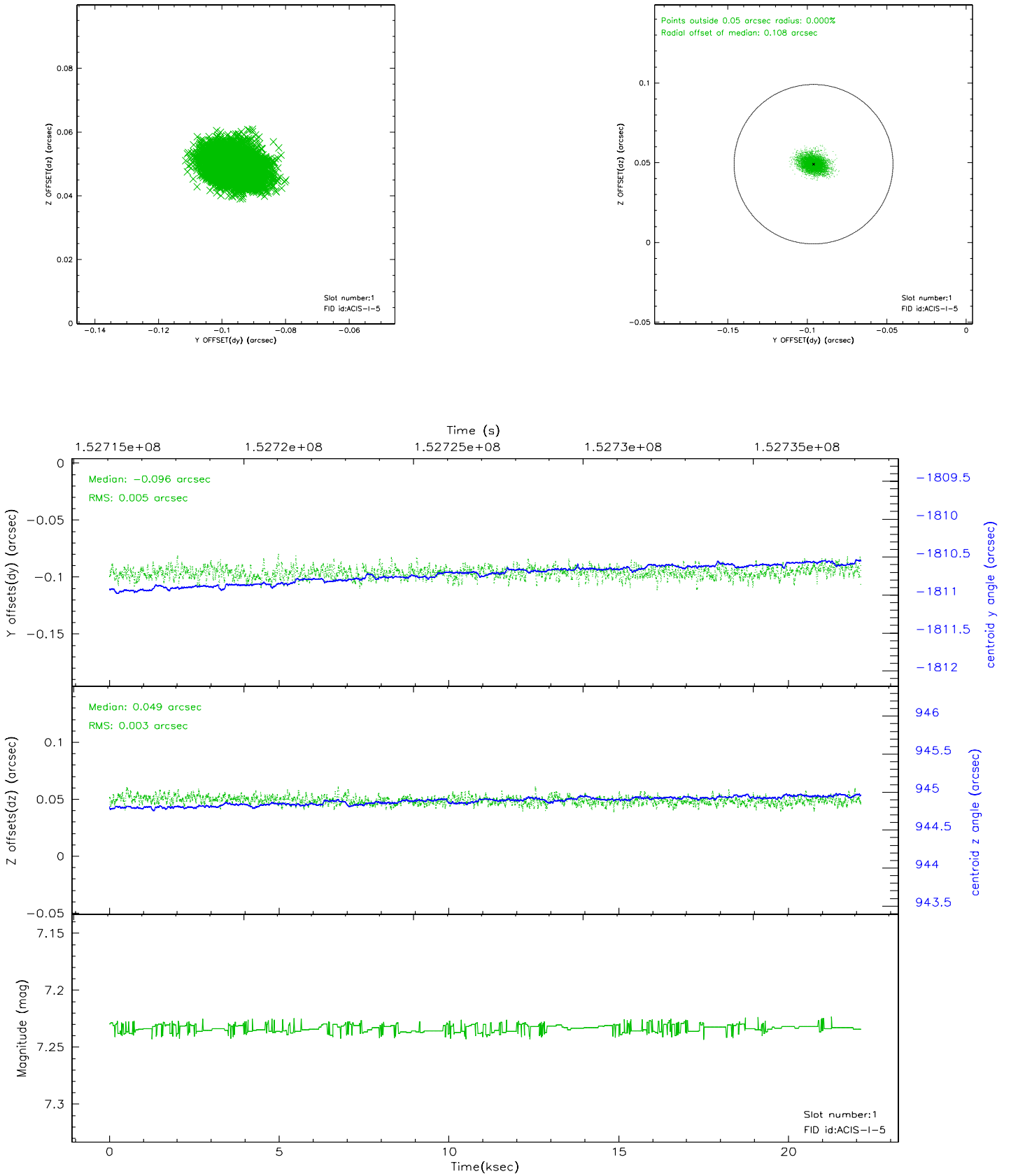


2.5 FID Slots

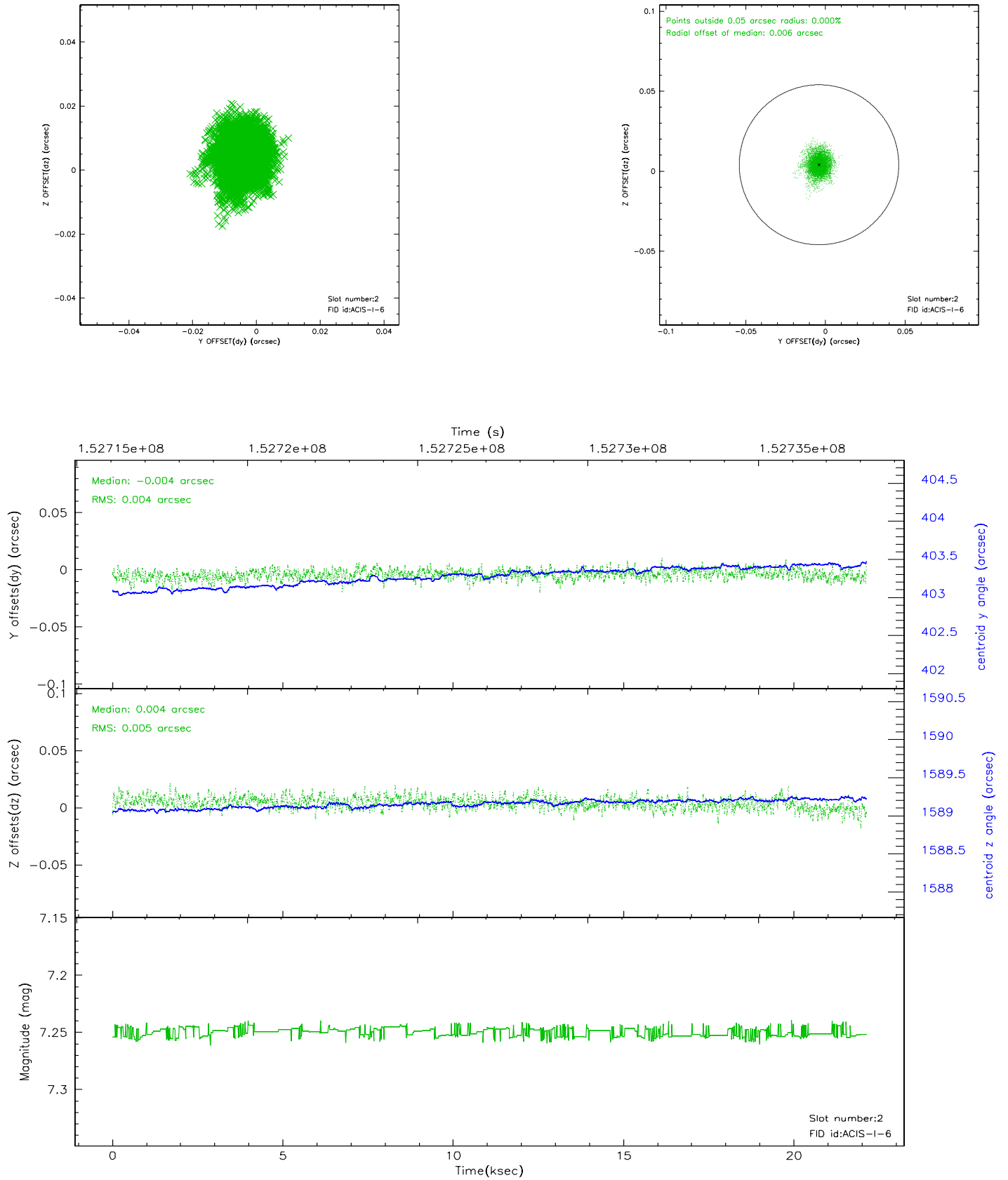
2.5.1 Slot 0



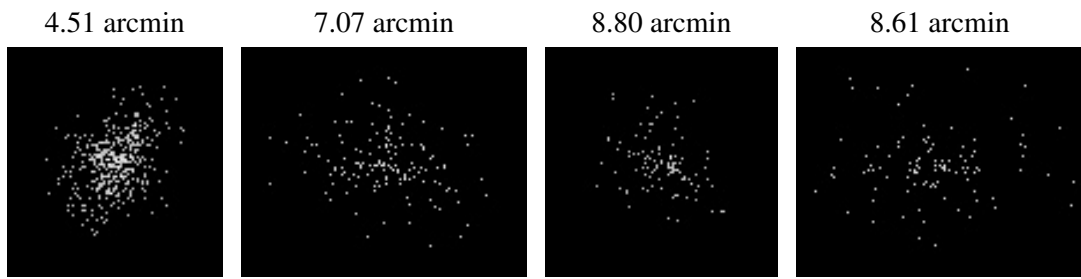
2.5.2 Slot 1



2.5.3 Slot 2



3 Point Sources



A Summary

A.1 Status

V&V Scientist	Beth Sundheim
V&V Date (YYYY-MM-DD)	2006.10.12
V&V Edition	1
V&V Disposition and Status	OK
V&V Charge Time	21.12

A.2 Comments