

V&V Reference Report

L2 ASCDS Version : 7.6.10

Observation 310 - L2 Version 001
Chandra X-Ray Center

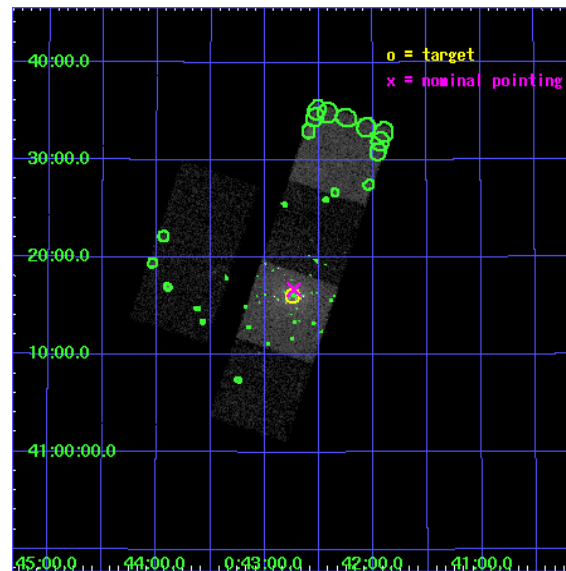
L2 Processing Date : May 27 2007

Contents

1	Front	2
2	OBI	3
2.1	OBI	3
2.1.1	Images	3
2.1.2	Bias	3
2.1.3	Parameters	4
2.1.4	Events	4
2.2	Compared Parameters	5
2.3	Aspect	6
2.4	Star Slots	9
2.4.1	Slot 3	9
2.4.2	Slot 4	10
2.4.3	Slot 5	11
2.4.4	Slot 6	12
2.4.5	Slot 7	13
2.5	FID Slots	14
2.5.1	Slot 0	14
2.5.2	Slot 1	15
2.5.3	Slot 2	16
3	Point Sources	17
A	Summary	18
A.1	Status	18
A.2	Comments	18

1 Front

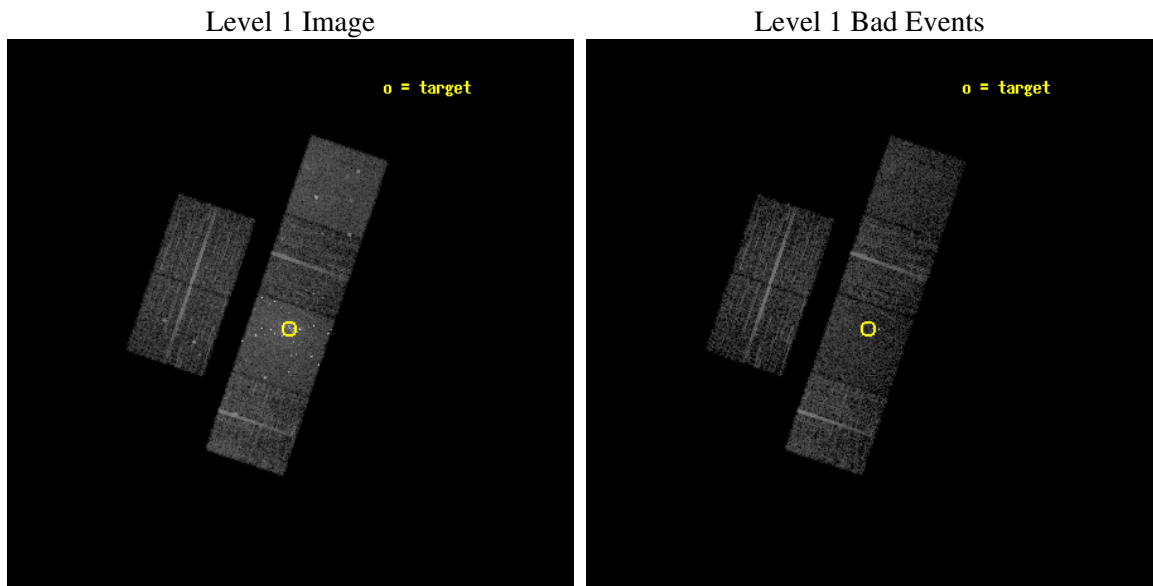
seq_num	600070
obs_id	310
title	M31 MONITORING (FOLLOWUP)
observer	Dr. Stephen Murray
object	M31 TRANSIENT TBD
dtcycle	0
cycle	P
ra_targ	10.685
dec_targ	41.268972
ra_nom	10.683111396224
dec_nom	41.278759184581
roll_nom	108.74985193777
revision	3
ontime	5139.2000047863
livetime	5074.1243598709
ontime2	5139.2000047863
ontime3	5139.2000047863
ontime5	5139.2000047863
ontime6	5139.2000047863
ontime7	5139.2000047863
ontime8	5139.2000047863
l2events	71684



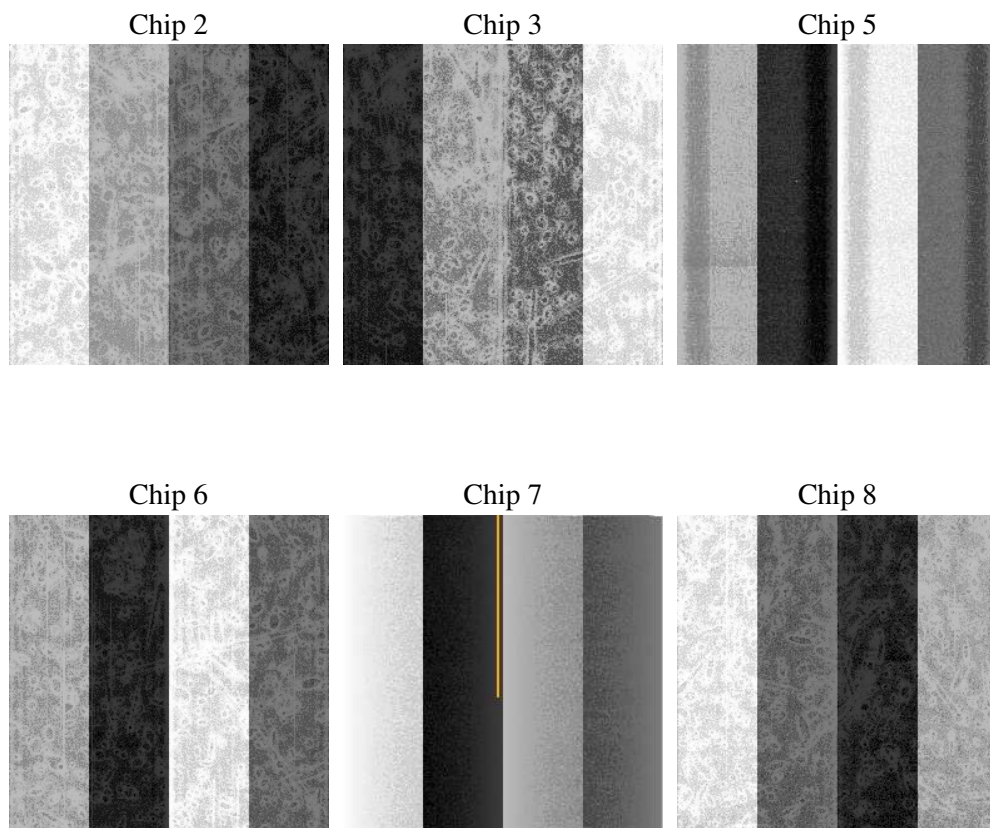
2 OBI

2.1 OBI

2.1.1 Images



2.1.2 Bias



2.1.3 Parameters

obi_num	0
ascdsver	7.6.10
caldsver	3.4.0
date	2007-05-27T18:47:18
revision	3

sched_exp_time	5000.000000
ontime	5139.2000047863
ontime2	5139.2000047863
ontime3	5139.2000047863
ontime5	5139.2000047863
ontime6	5139.2000047863
ontime7	5139.2000047863
ontime8	5139.2000047863
l1events	268813

2.1.4 Events

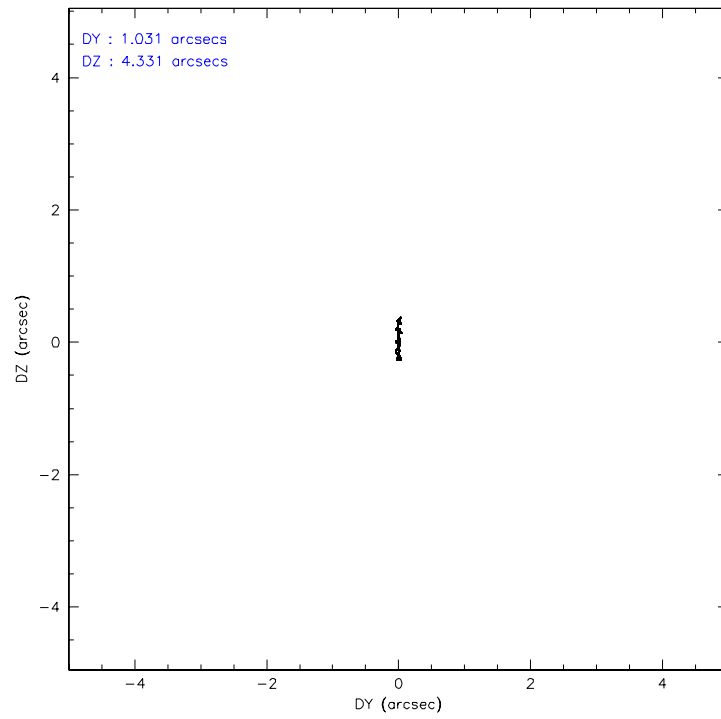
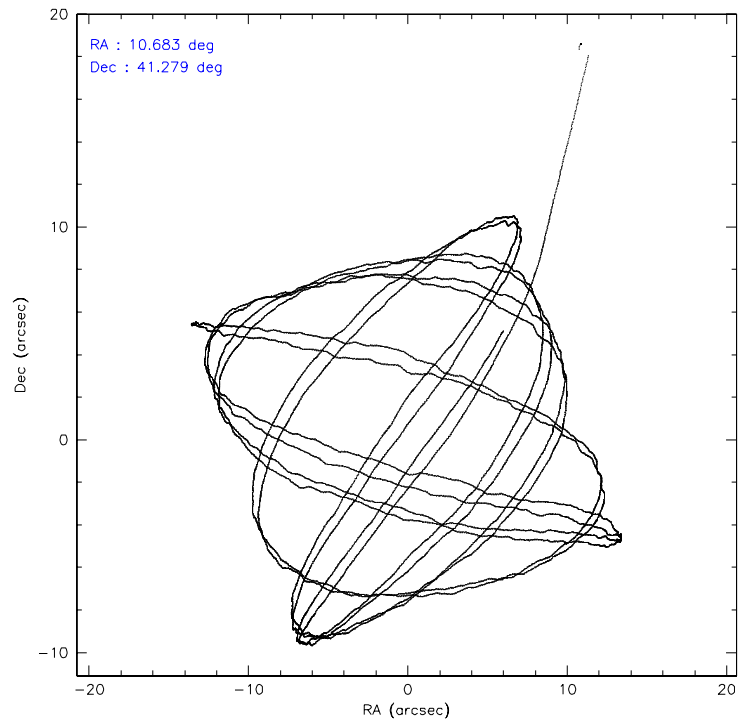
	ccd 2	ccd 3	ccd 5	ccd 6	ccd 7	ccd 8
level 1 events	38081	35843	46573	37530	65289	45497
rejected events	34091	31301	25564	32738	27748	36965
rejected %	89%	87%	54%	87%	42%	81%

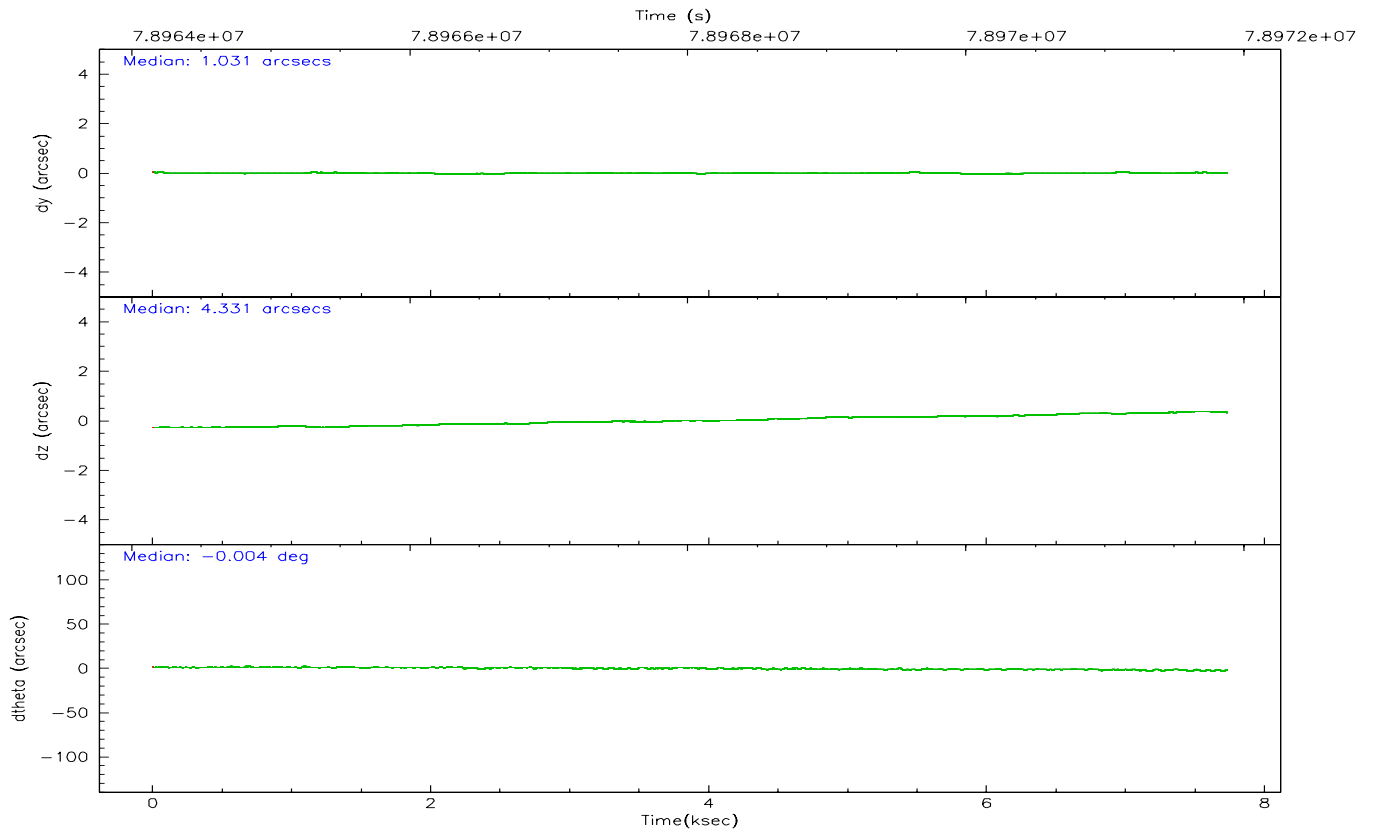
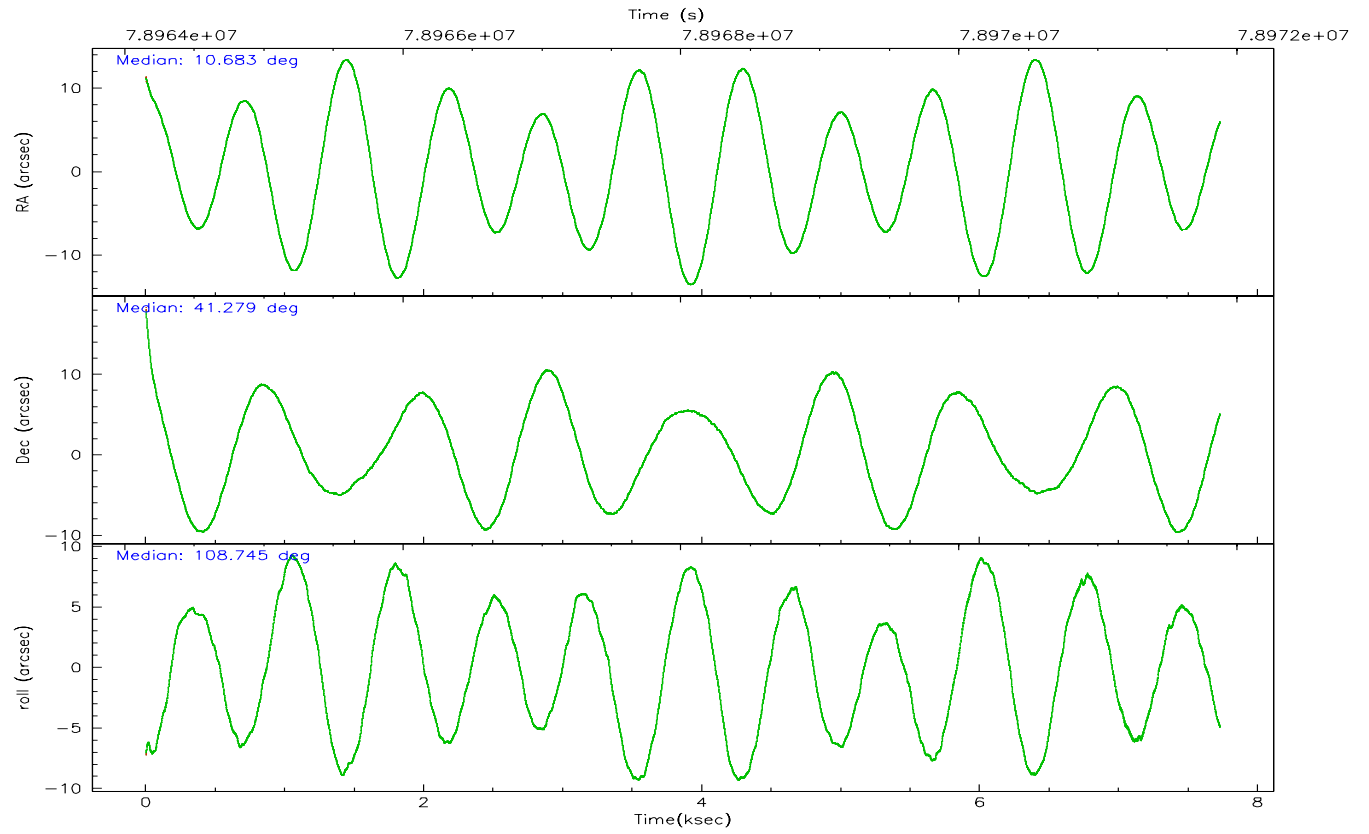
	ccd 2	ccd 3	ccd 5	ccd 6	ccd 7	ccd 8
grade 0 events	1869	2474	2939	2563	8405	3040
	4%	6%	6%	6%	12%	6%
grade 1 events	15	25	99	17	133	28
	0%	0%	0%	0%	0%	0%
grade 2 events	838	813	6095	880	8913	1929
	2%	2%	13%	2%	13%	4%
grade 3 events	367	412	1001	419	4071	829
	0%	1%	2%	1%	6%	1%
grade 4 events	383	359	924	436	4140	821
	1%	1%	1%	1%	6%	1%
grade 5 events	1156	1225	3506	1361	4513	1715
	3%	3%	7%	3%	6%	3%
grade 6 events	673	668	10883	735	13363	2198
	1%	1%	23%	1%	20%	4%
grade 7 events	32780	29867	21126	31119	21751	34937
	86%	83%	45%	82%	33%	76%

2.2 Compared Parameters

Parameter	Planned	Actual	Parameter	Planned	Actual
Instrument	ACIS	ACIS	Obspar format version number	6	6
Detector	ACIS-235678	ACIS-235678	Obspar file type	PREDICTED	ACTUAL
Grating	NONE	NONE	Obspar update status	NONE	UPDATED
Data mode	FAINT	FAINT	Number of optional ACIS chips dropped	0	0
Observation mode	POINTING	POINTING	On-chip summing requested	N	N
Pointing RA	10.710622	10.68311139622446	Subarray requested	NONE	NONE
Pointing Dec	41.260857	41.27875918458095	Alternating exposures requested	N	N
Pointing Roll	108.575073	108.7498519377658	Primary exposure time	3.200000	3.2
SIM focus pos (mm)	-0.684267	-0.6828225247311905			
SIM defocus (mm)	0	0.001444936568705701			
SIM translation stage pos (mm)	-190.132523	-190.1425803651734			
SIM translation stage offset (mm)	0	0.01005778216563158			
Observation start time	78964301.184000	78963152.670884			
Observation start date	2000-07-02T22:30:37	2000-07-02T22:12:32			
Observation end time	78969301.184000	78972985.49624699			
Observation end date	2000-07-02T23:53:57	2000-07-03T00:56:25			
Read mode	TIMED	TIMED			

2.3 Aspect



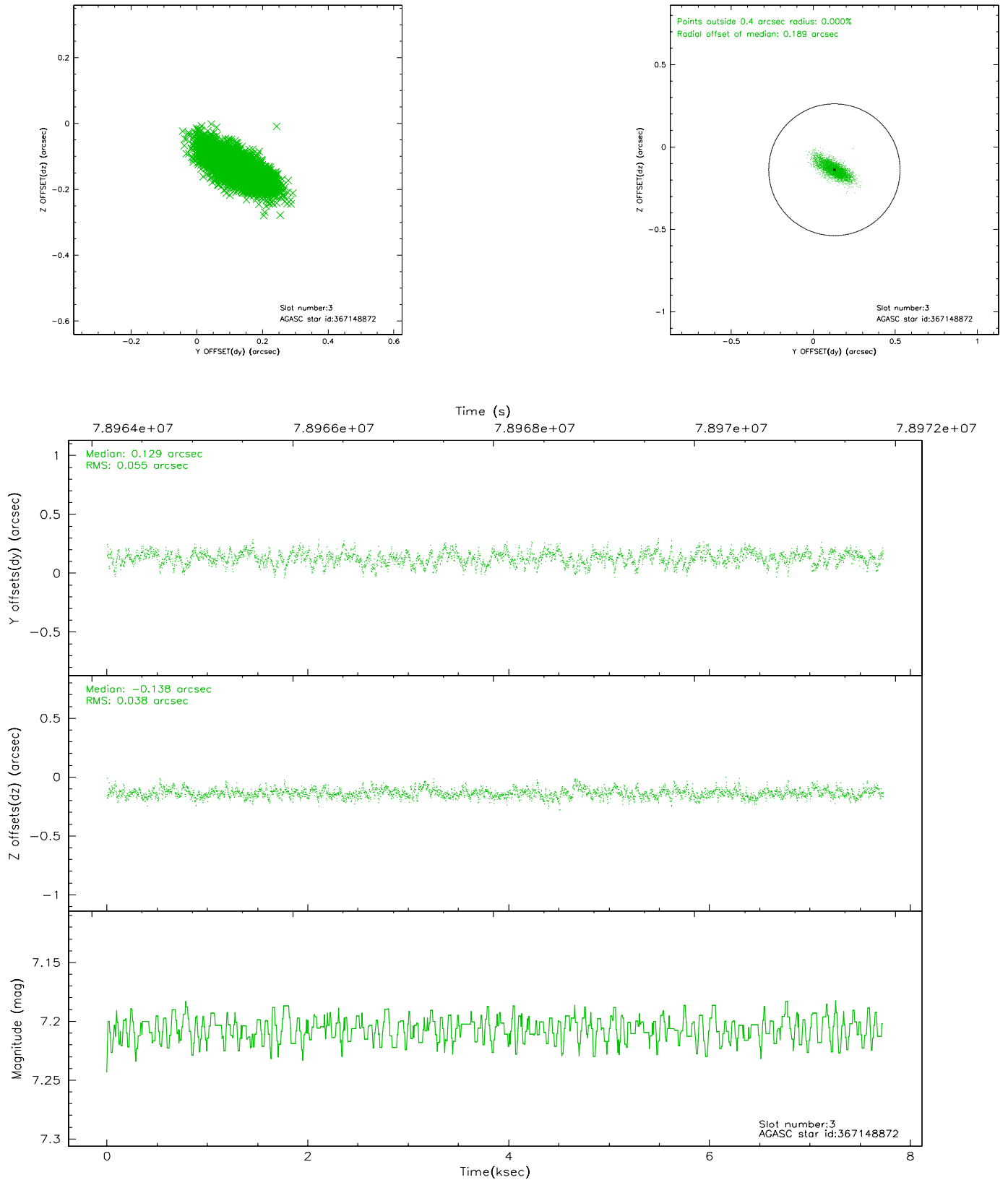


Slot Statistics

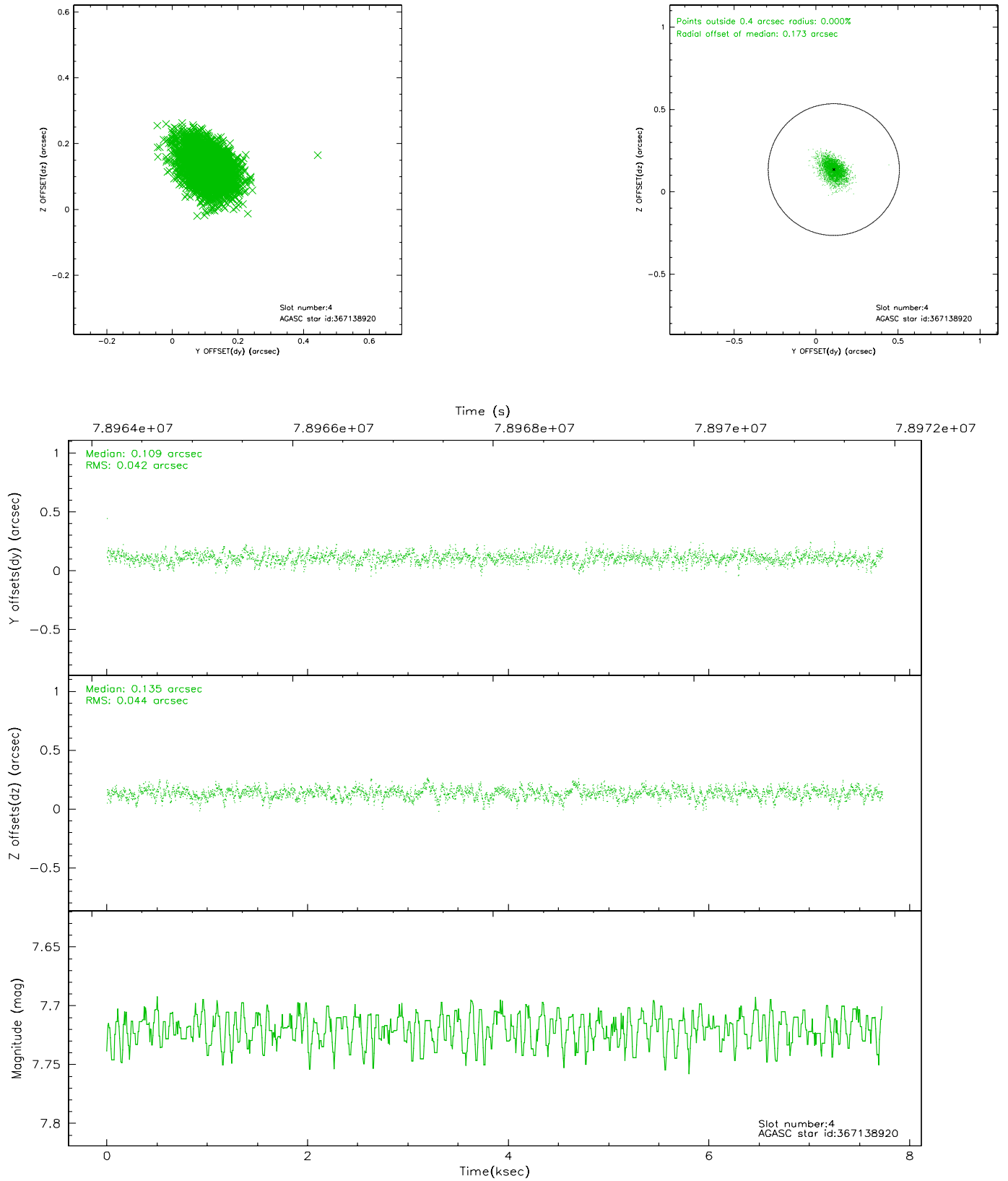
slot	status	id	mag	n_pts	med_dy	med_dz	dr1	dr2	ra	dec	mean_y	mean_z
0	BAD	ACIS-S-3	7.19	1886	882.805	133.536	0.019	0.029	0.000000	0.000000	942.37	-1720.92
1	FID	ACIS-S-4	7.21	1886	-0.050	0.005	0.004	0.007	0.000000	0.000000	2160.18	182.33
2	FID	ACIS-S-5	7.24	1886	0.028	0.005	0.004	0.007	0.000000	0.000000	-1805.49	176.86
3	GUIDE	367148872	7.21	3771	0.129	-0.138	0.067	0.126	10.505940	40.688258	-1775.43	1186.03
4	GUIDE	367138920	7.72	3771	0.109	0.135	0.063	0.107	11.513485	40.808909	-2229.95	-1558.24
5	GUIDE	367674552	8.84	3768	-0.047	0.143	0.073	0.128	11.016238	41.570845	796.41	-1136.21
6	GUIDE	367658664	9.59	3765	-0.049	-0.097	0.089	0.152	10.374070	41.369746	662.95	736.31
7	GUIDE	367665472	9.49	3770	-0.139	-0.037	0.093	0.163	10.241611	41.730843	2008.38	654.89

2.4 Star Slots

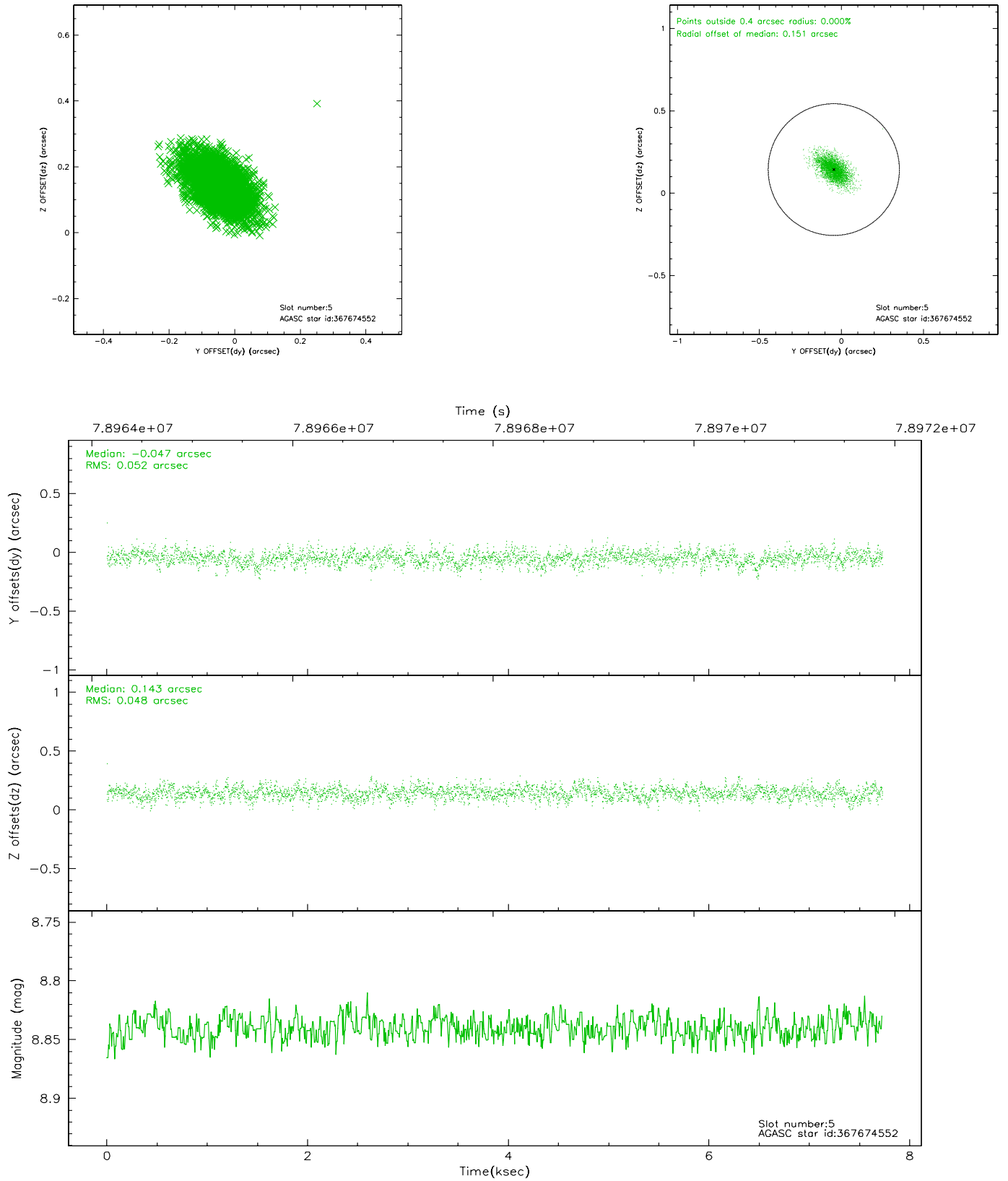
2.4.1 Slot 3



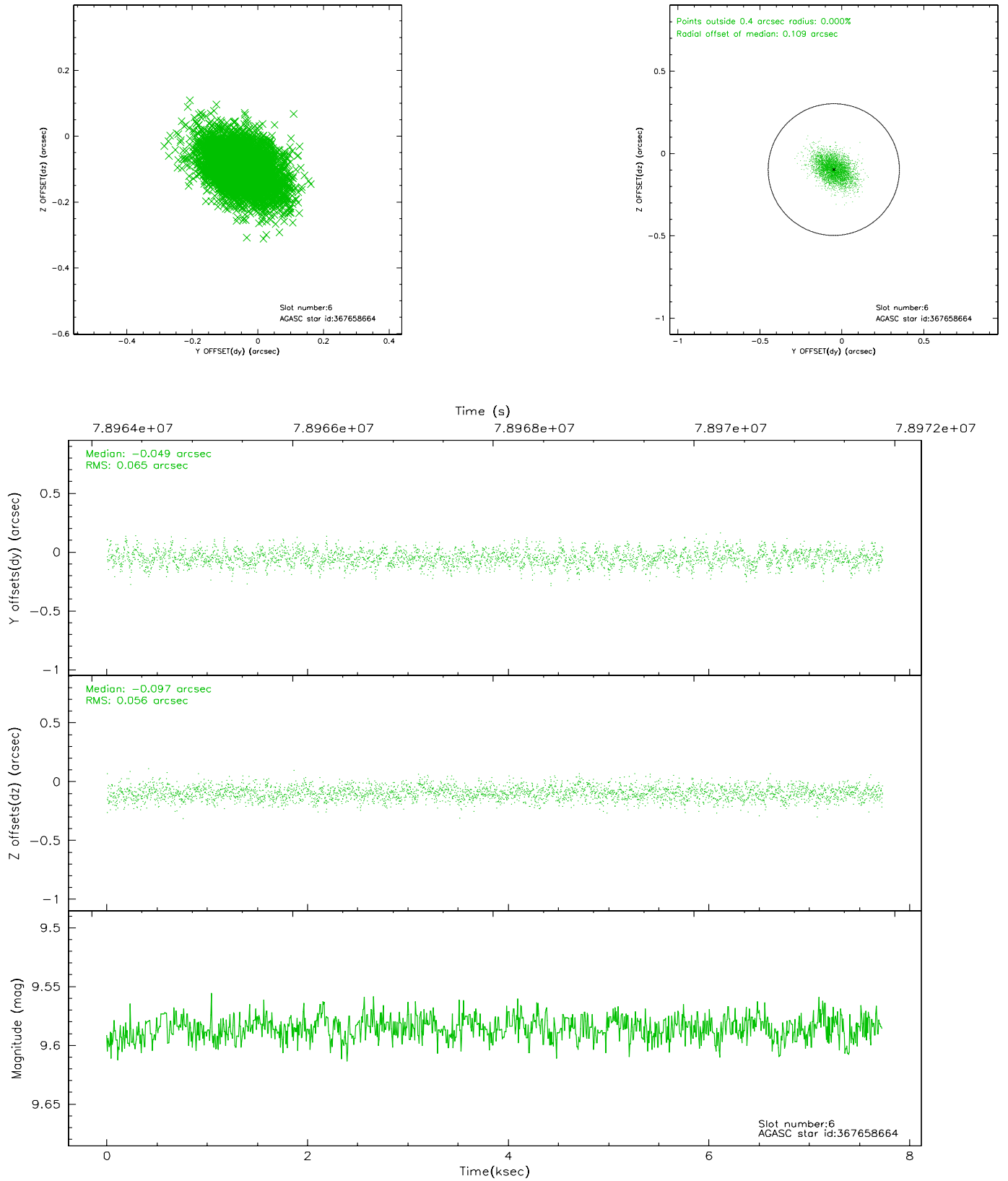
2.4.2 Slot 4



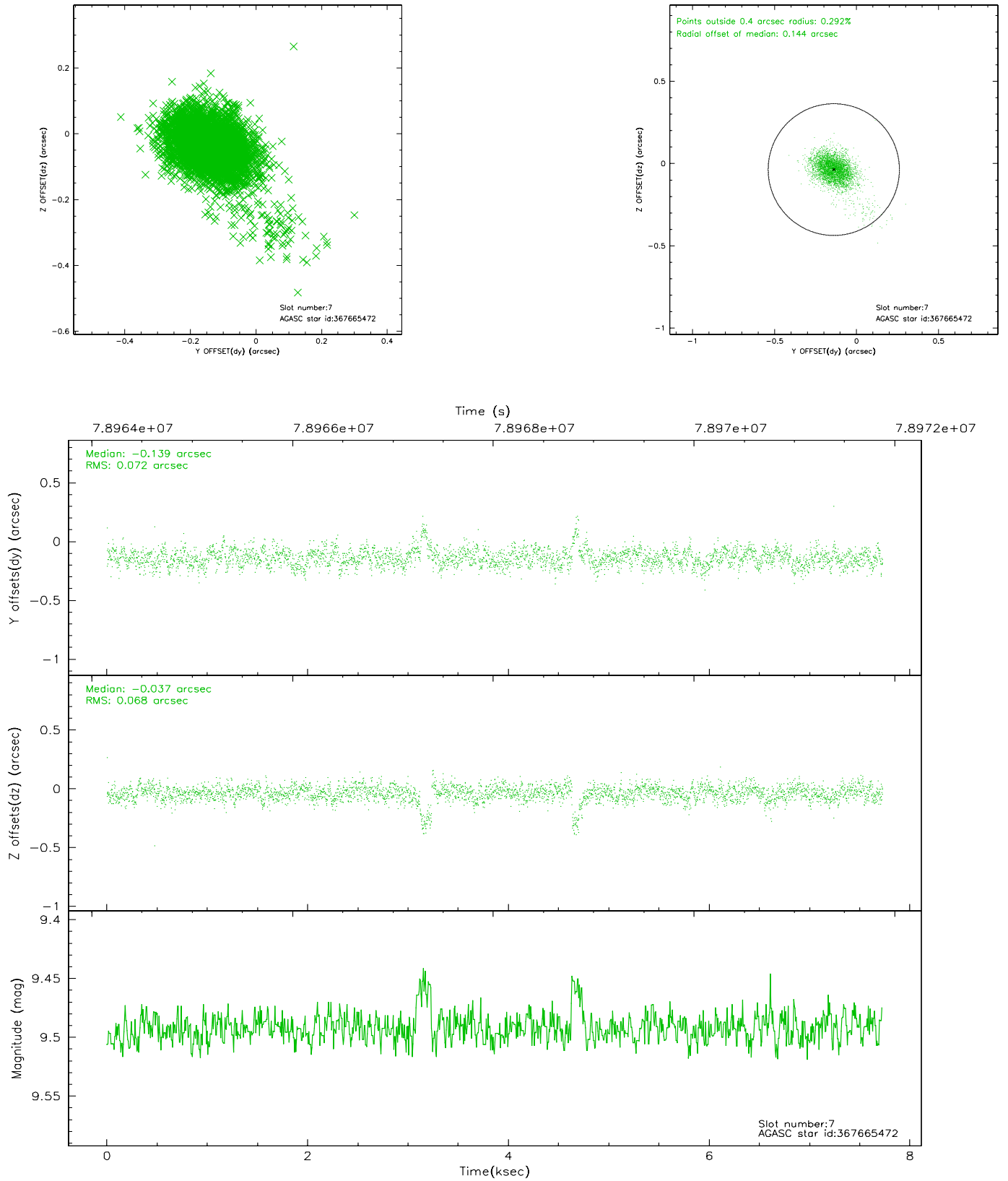
2.4.3 Slot 5



2.4.4 Slot 6

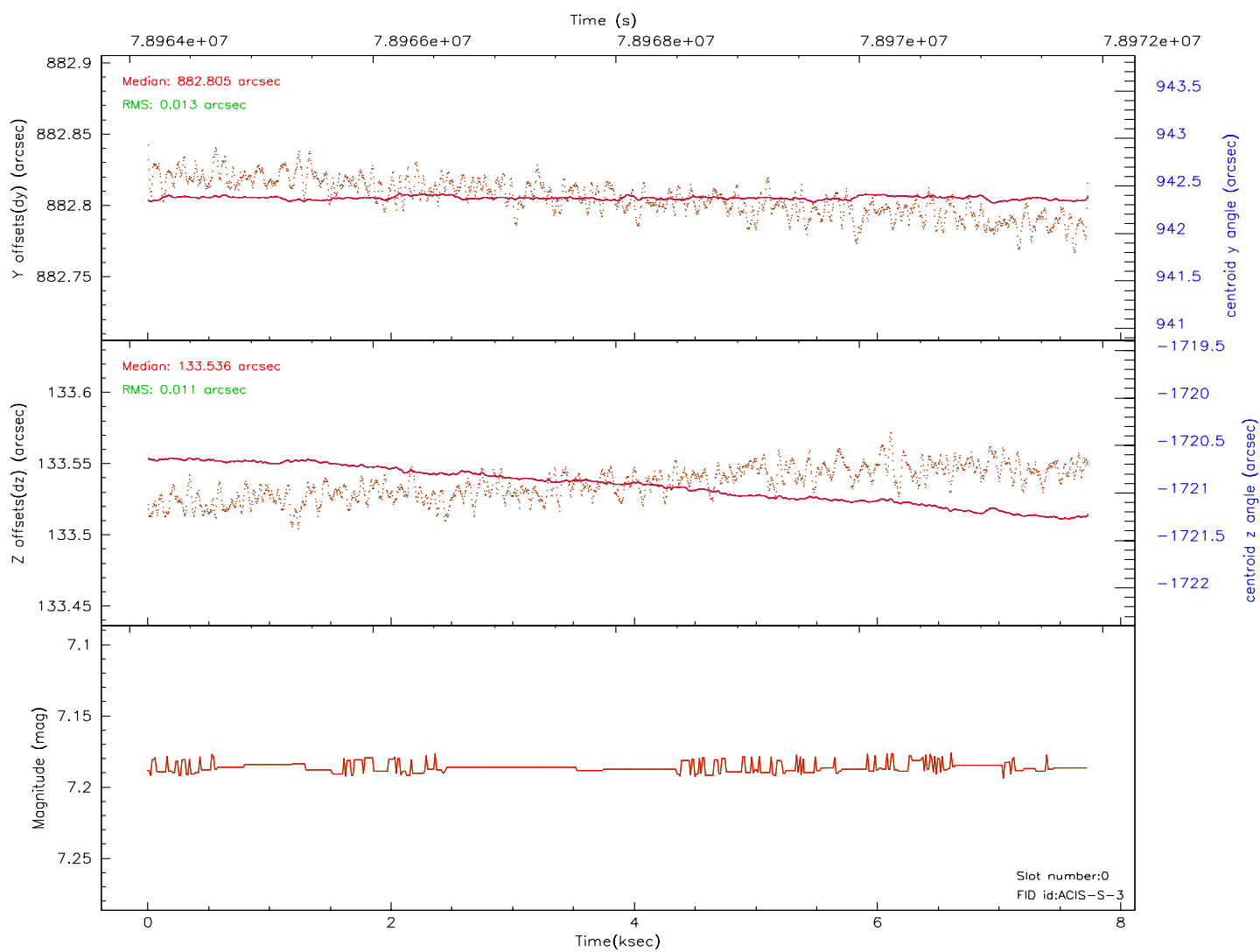
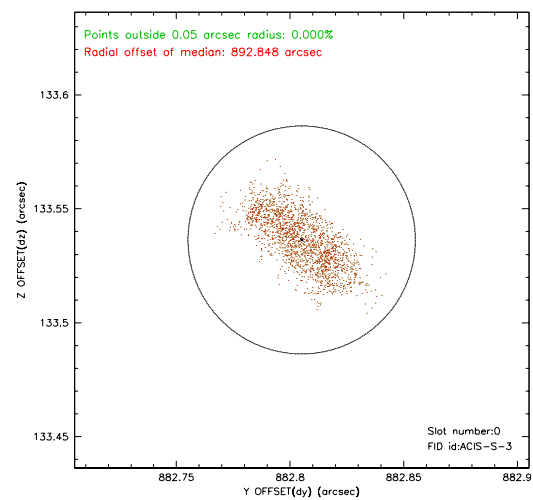
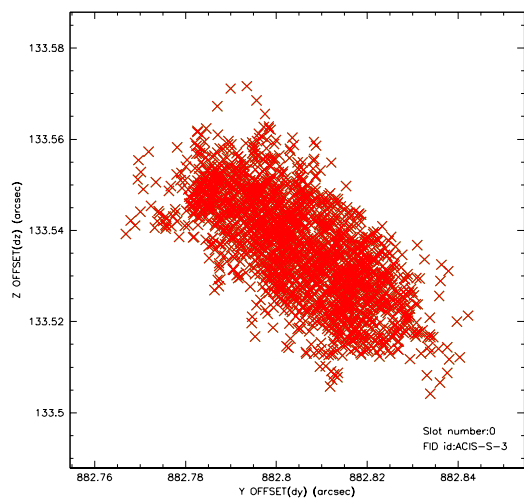


2.4.5 Slot 7

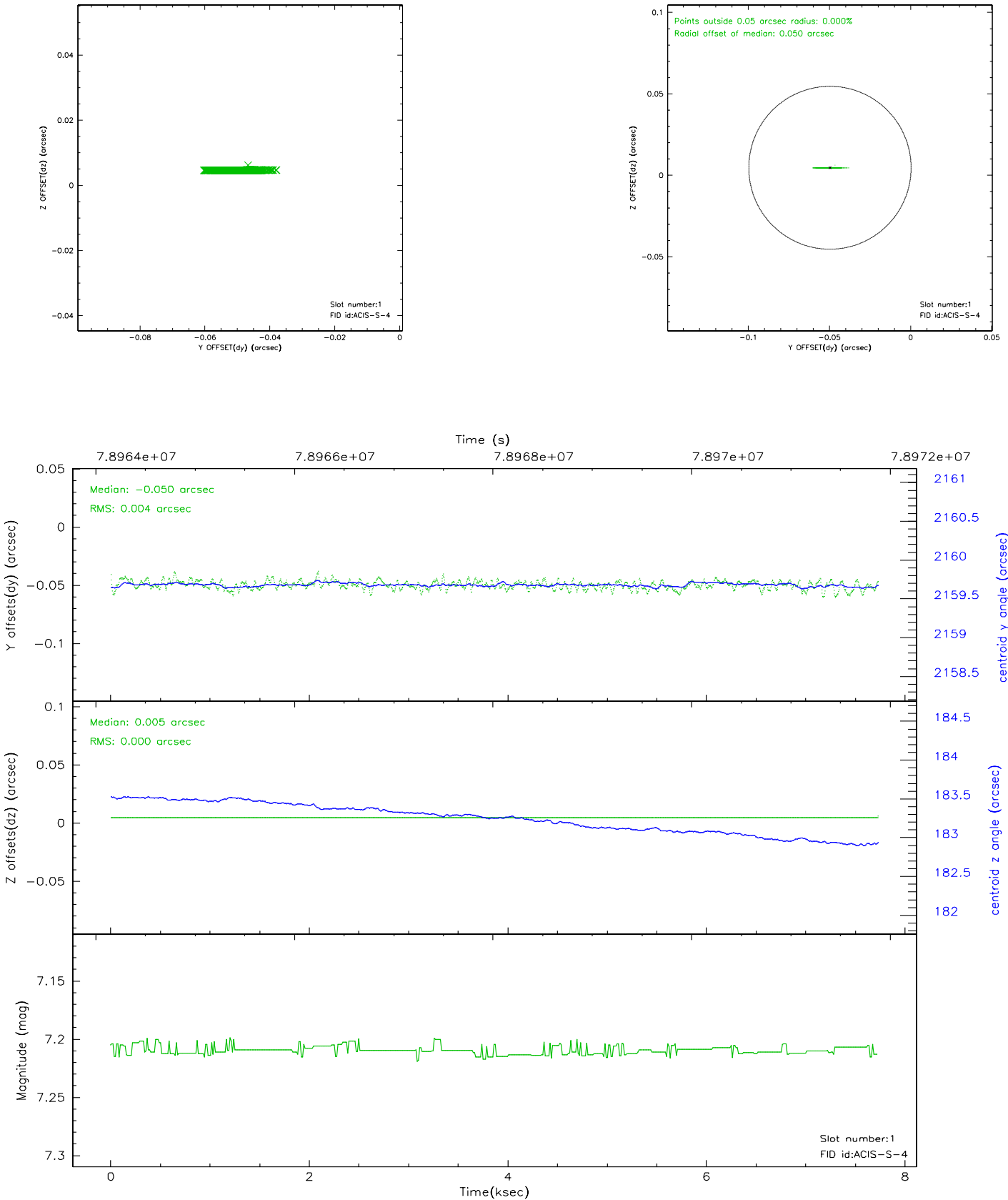


2.5 FID Slots

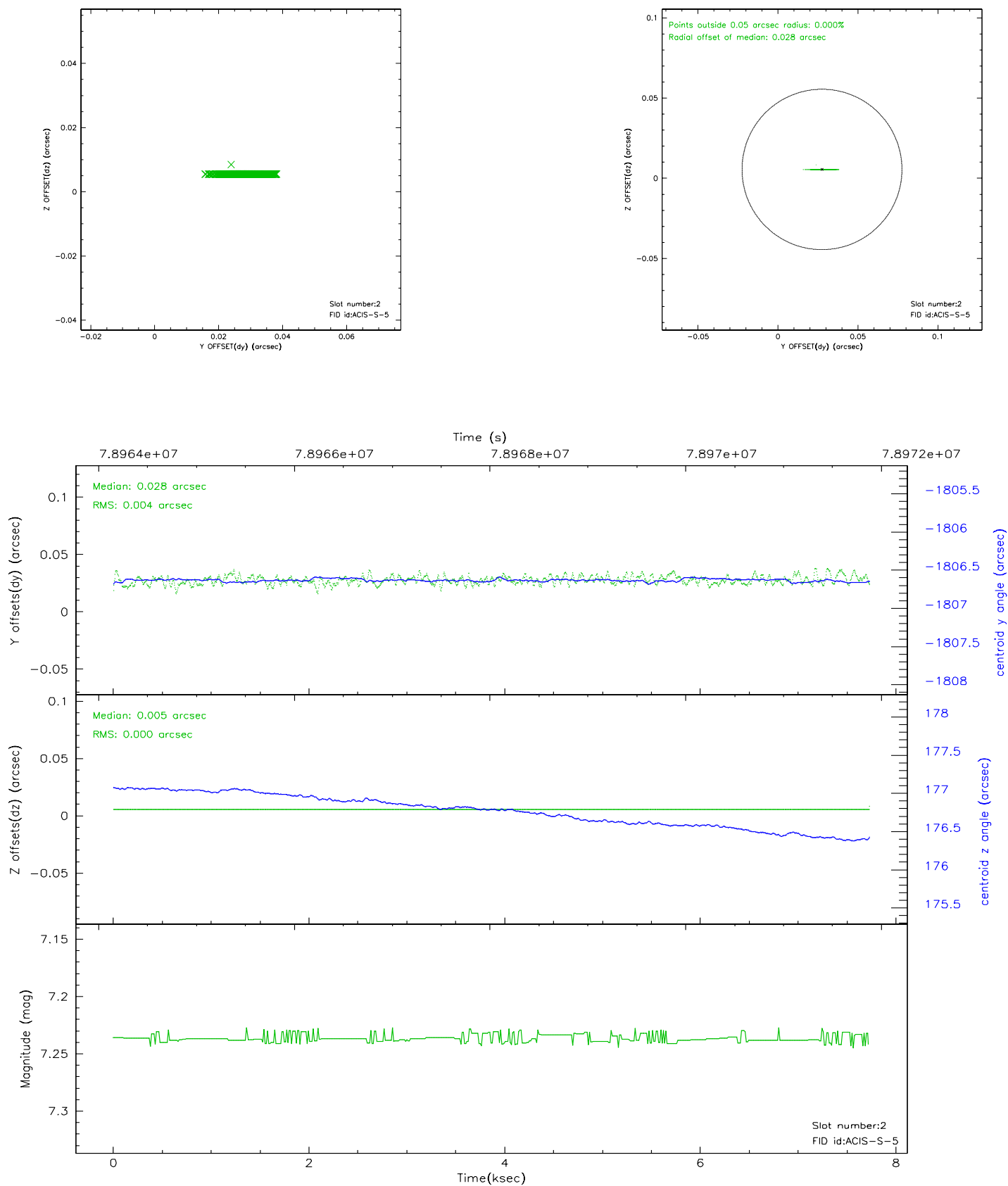
2.5.1 Slot 0



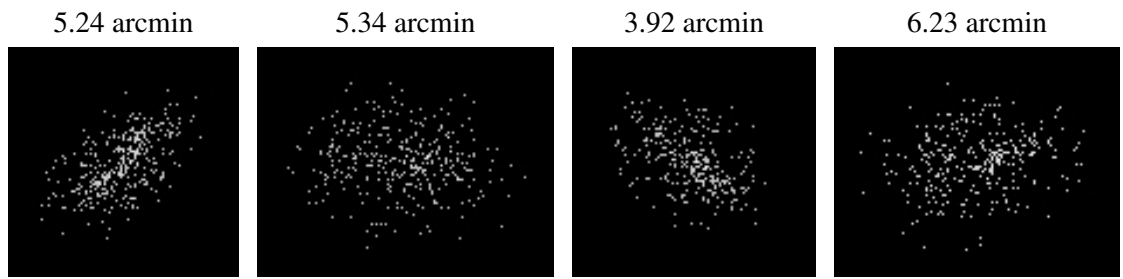
2.5.2 Slot 1



2.5.3 Slot 2



3 Point Sources



A Summary

A.1 Status

V&V Scientist	Jen Lauer
V&V Date (YYYY-MM-DD)	2007.05.29
V&V Edition	1
V&V Disposition and Status	OK
V&V Charge Time	5.139

A.2 Comments

The fidlight in slot 0 is marked BAD and is not included in the aspect solution. The aspect solution is not expected to be degraded by removing one fid from the solution.