

V&V Reference Report

L2 ASCDS Version : 7.6.9

Observation 3060 - L2 Version 001
Chandra X-Ray Center

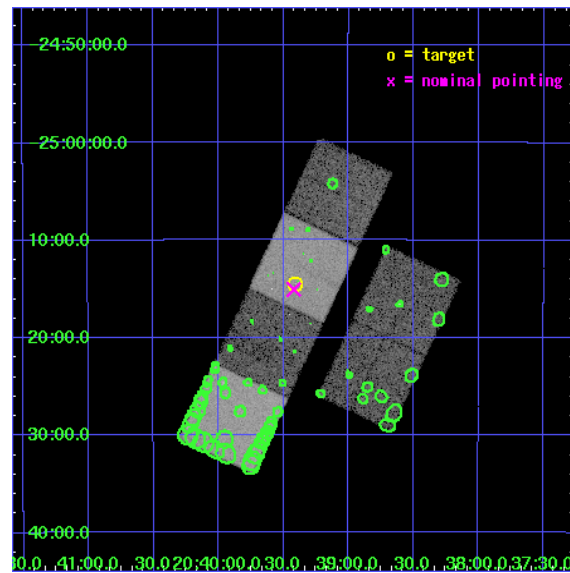
L2 Processing Date : Oct 2 2006

Contents

1	Front	2
2	OBI	3
2.1	OBI	3
2.1.1	Images	3
2.1.2	Bias	3
2.1.3	Parameters	4
2.1.4	Events	4
2.2	Compared Parameters	5
2.3	Aspect	6
2.4	Star Slots	9
2.4.1	Slot 3	9
2.4.2	Slot 4	10
2.4.3	Slot 5	11
2.4.4	Slot 6	12
2.4.5	Slot 7	13
2.5	FID Slots	14
2.5.1	Slot 0	14
2.5.2	Slot 1	15
2.5.3	Slot 2	16
3	Point Sources	17
A	Summary	18
A.1	Status	18
A.2	Comments	18

1 Front

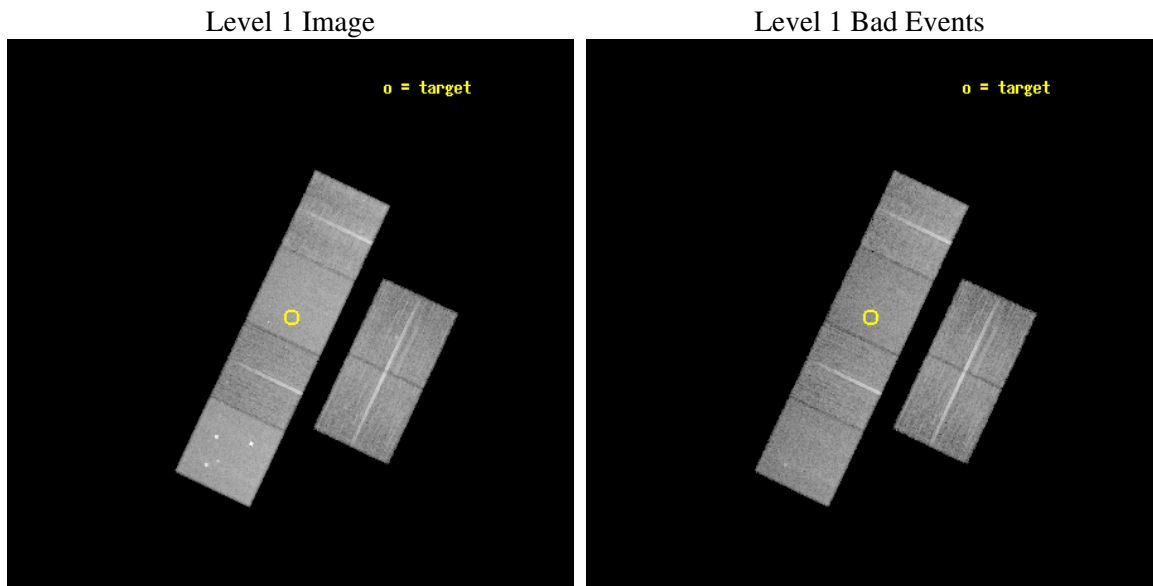
seq_num	700499
obs_id	3060
title	X-RAY STUDIES OF HIGH REDSHIFT RADIO GALAXIES
observer	Dr. Chris Carilli
object	2036-254
dtcycle	0
cycle	P
ra_targ	309.852083
dec_targ	-25.241778
ra_nom	309.85487520646
dec_nom	-25.251158448877
roll_nom	295.25044377612
revision	3
ontime	19964.799925625
livetime	19711.993607608
ontime2	19964.799925625
ontime3	19964.799925625
ontime5	19964.799925625
ontime6	19964.799925625
ontime7	19964.799925625
ontime8	19964.799925625
l2events	183908



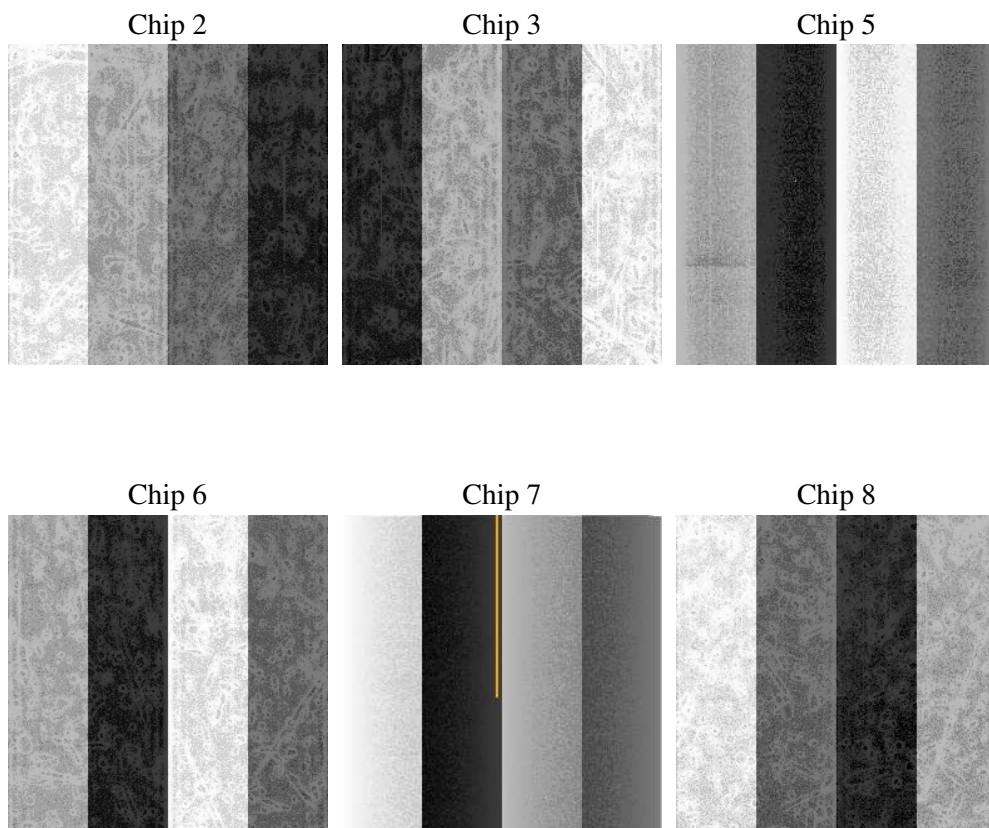
2 OBI

2.1 OBI

2.1.1 Images



2.1.2 Bias



2.1.3 Parameters

obi_num	1
ascdsver	7.6.9
caldsver	3.2.3
date	2006-10-02T20:00:15
revision	3

sched_exp_time	20000.000000
ontime	19967.833684117
ontime2	19967.833664209
ontime3	19967.833664209
ontime5	19967.833684117
ontime6	19967.833684117
ontime7	19967.833684117
ontime8	19967.833664209
l1events	854181

2.1.4 Events

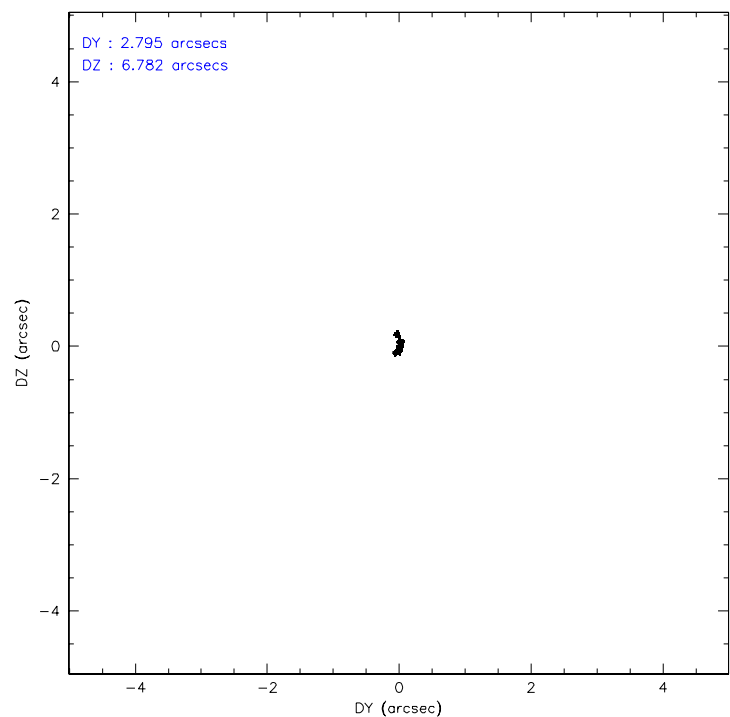
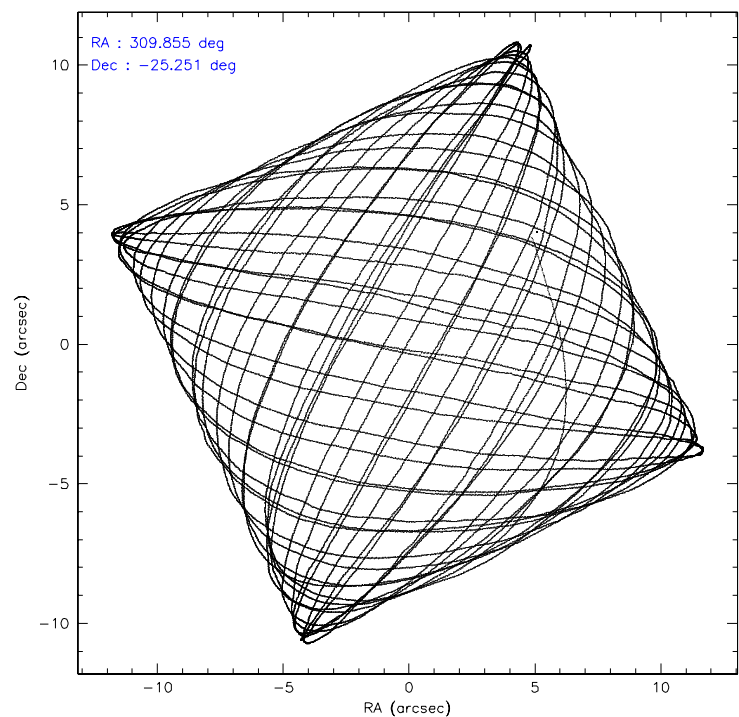
	ccd 2	ccd 3	ccd 5	ccd 6	ccd 7	ccd 8
level 1 events	123430	117643	178780	120522	160369	153437
rejected events	109202	103784	98513	106006	98746	122893
rejected %	88%	88%	55%	87%	61%	80%

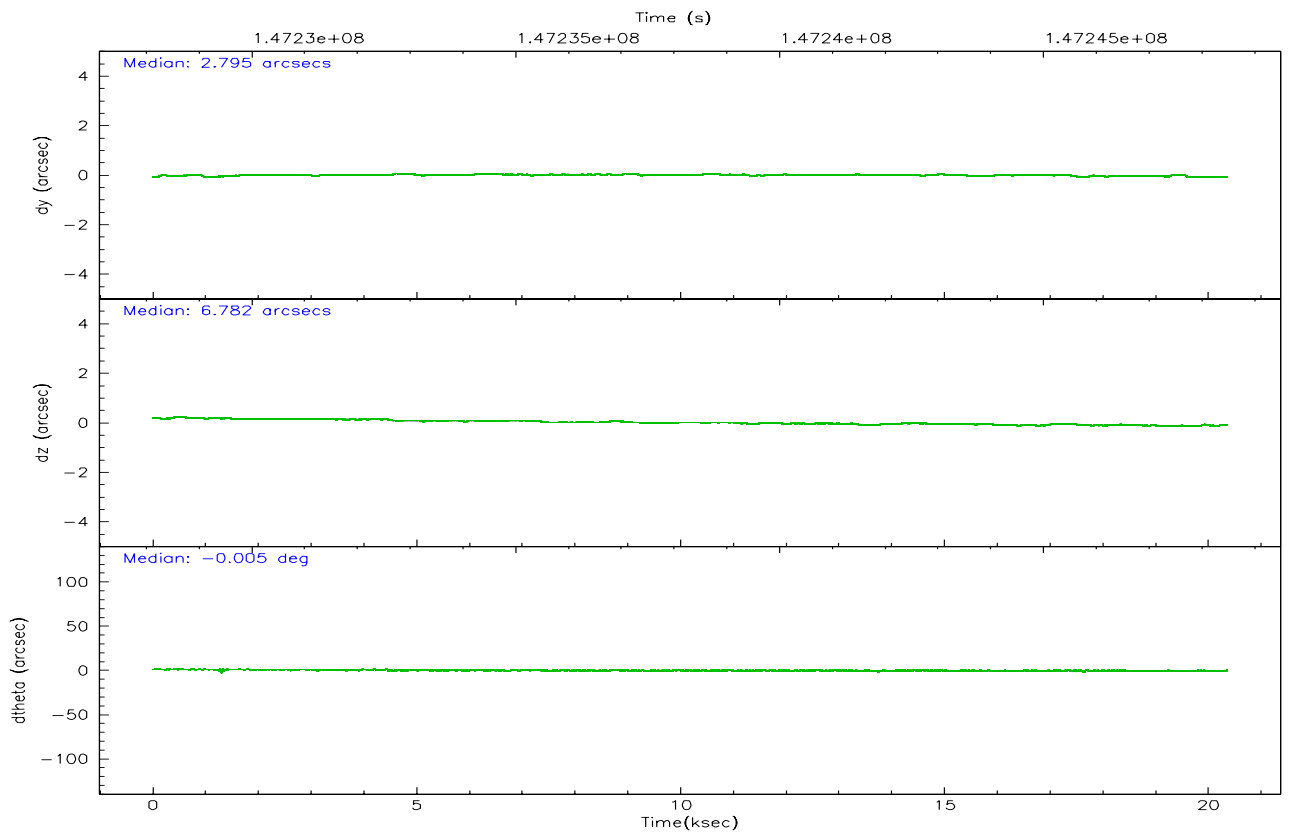
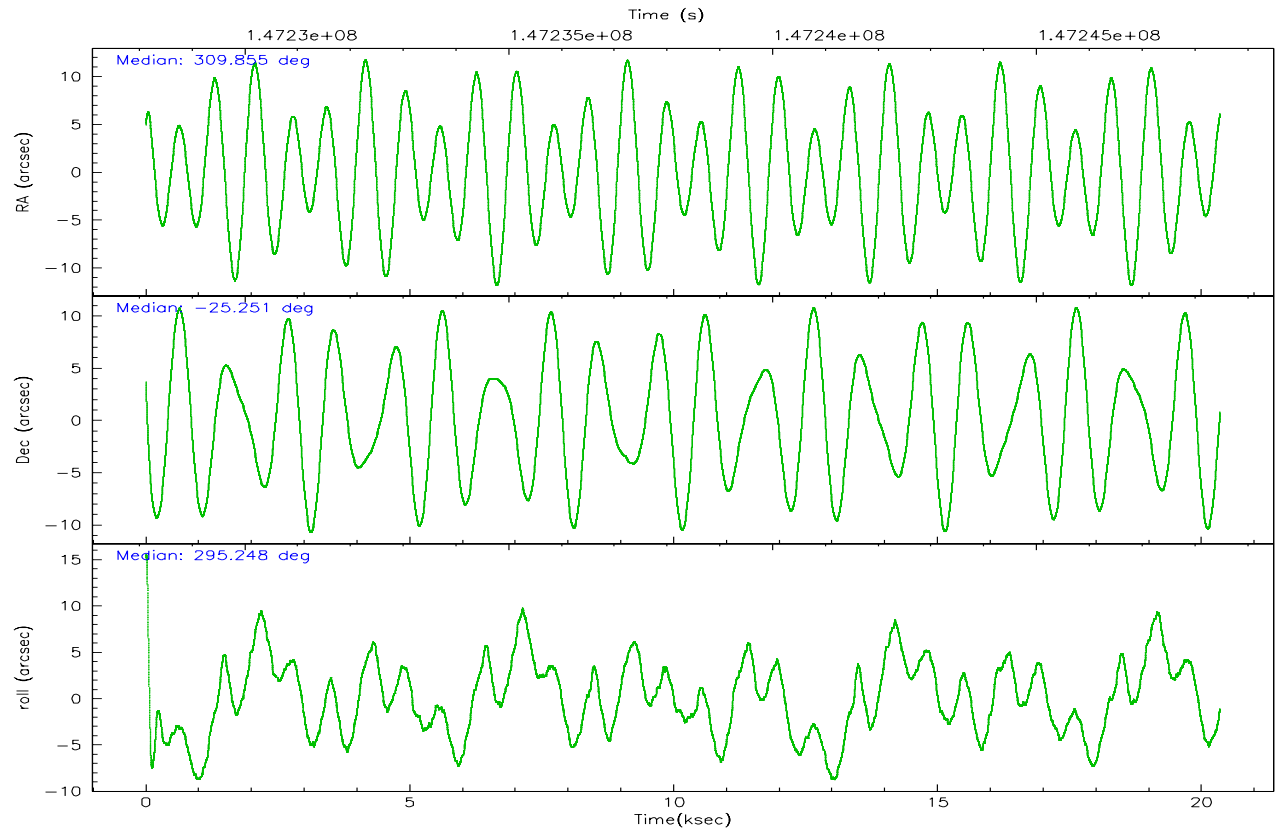
	ccd 2	ccd 3	ccd 5	ccd 6	ccd 7	ccd 8
grade 0 events	6289	6167	9091	5933	4159	9611
	5%	5%	5%	4%	2%	6%
grade 1 events	70	70	137	64	97	94
	0%	0%	0%	0%	0%	0%
grade 2 events	2828	2540	23733	2839	15158	6710
	2%	2%	13%	2%	9%	4%
grade 3 events	1380	1356	2034	1429	3425	3151
	1%	1%	1%	1%	2%	2%
grade 4 events	1391	1424	1717	1412	3166	3016
	1%	1%	0%	1%	1%	1%
grade 5 events	4620	5098	8472	5338	10860	6930
	3%	4%	4%	4%	6%	4%
grade 6 events	2344	2376	43702	2909	35727	8059
	1%	2%	24%	2%	22%	5%
grade 7 events	104508	98612	89894	100598	87777	115866
	84%	83%	50%	83%	54%	75%

2.2 Compared Parameters

Parameter	Planned	Actual	Parameter	Planned	Actual
Instrument	ACIS	ACIS	Obspar format version number	6	6
Detector	ACIS-235678	ACIS-235678	Obspar file type	PREDICTED	ACTUAL
Grating	NONE	NONE	Obspar update status	NONE	UPDATED
Data mode	FAINT	FAINT	Number of optional ACIS chips dropped	0	0
Observation mode	POINTING	POINTING	On-chip summing requested	N	N
Pointing RA	309.829913	309.8548752064593	Subarray requested	NONE	NONE
Pointing Dec	-25.235891	-25.25115844887742	Alternating exposures requested	N	N
Pointing Roll	295.083149	295.2504437761223	Primary exposure time	0.000000	3.2
SIM focus pos (mm)	-0.684267	-0.6828225247311905			
SIM defocus (mm)	0	0.001444936568705701			
SIM translation stage pos (mm)	-190.132523	-190.1425803651734			
SIM translation stage offset (mm)	0	0.01005778216563158			
Observation start time	147228485.184000	147227440.41693			
Observation start date	2002-09-01T00:47:01	2002-09-01T00:30:40			
Observation end time	147248485.184000	147249281.63033			
Observation end date	2002-09-01T06:20:21	2002-09-01T06:34:41			
Read mode	TIMED	TIMED			

2.3 Aspect



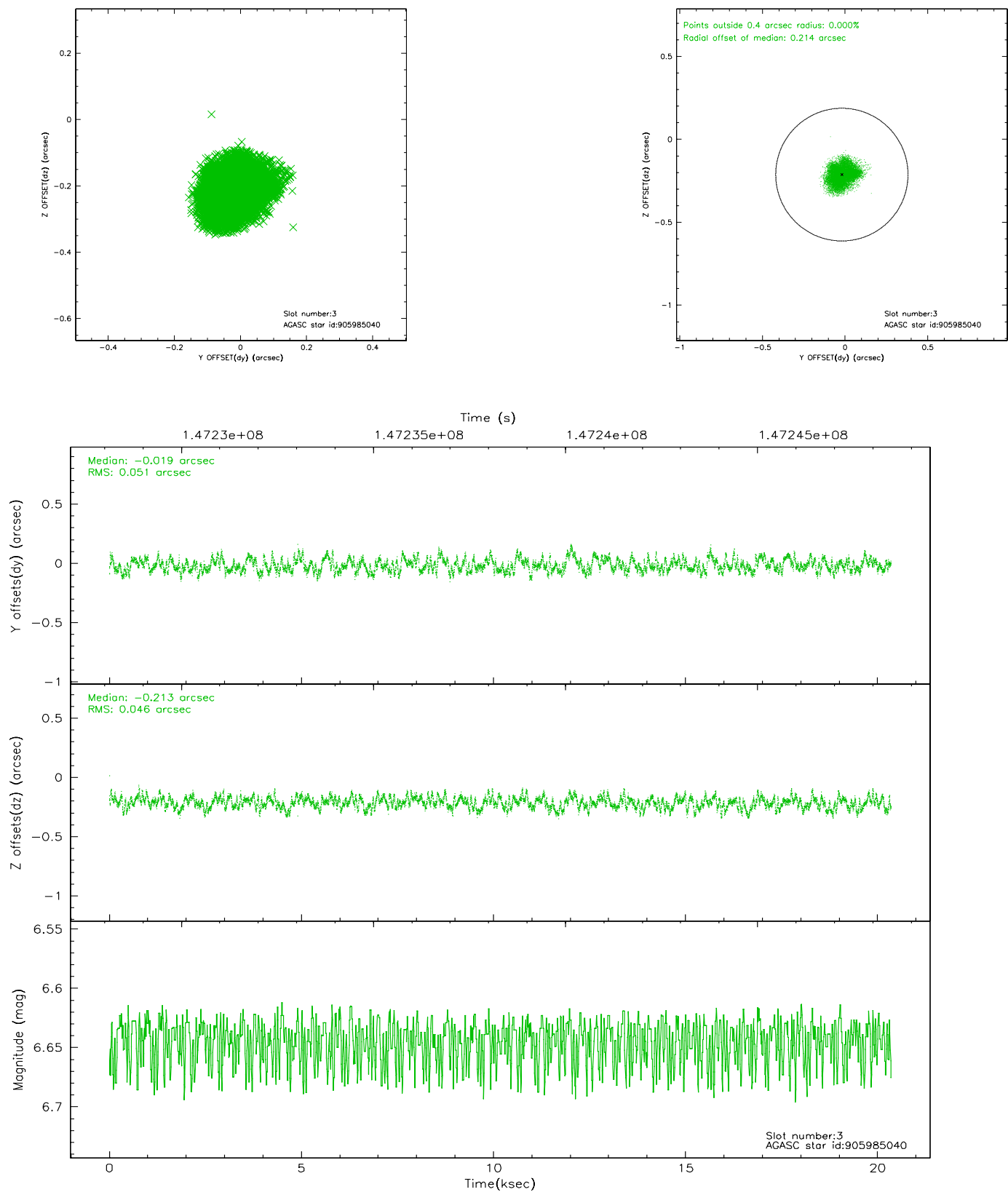


Slot Statistics

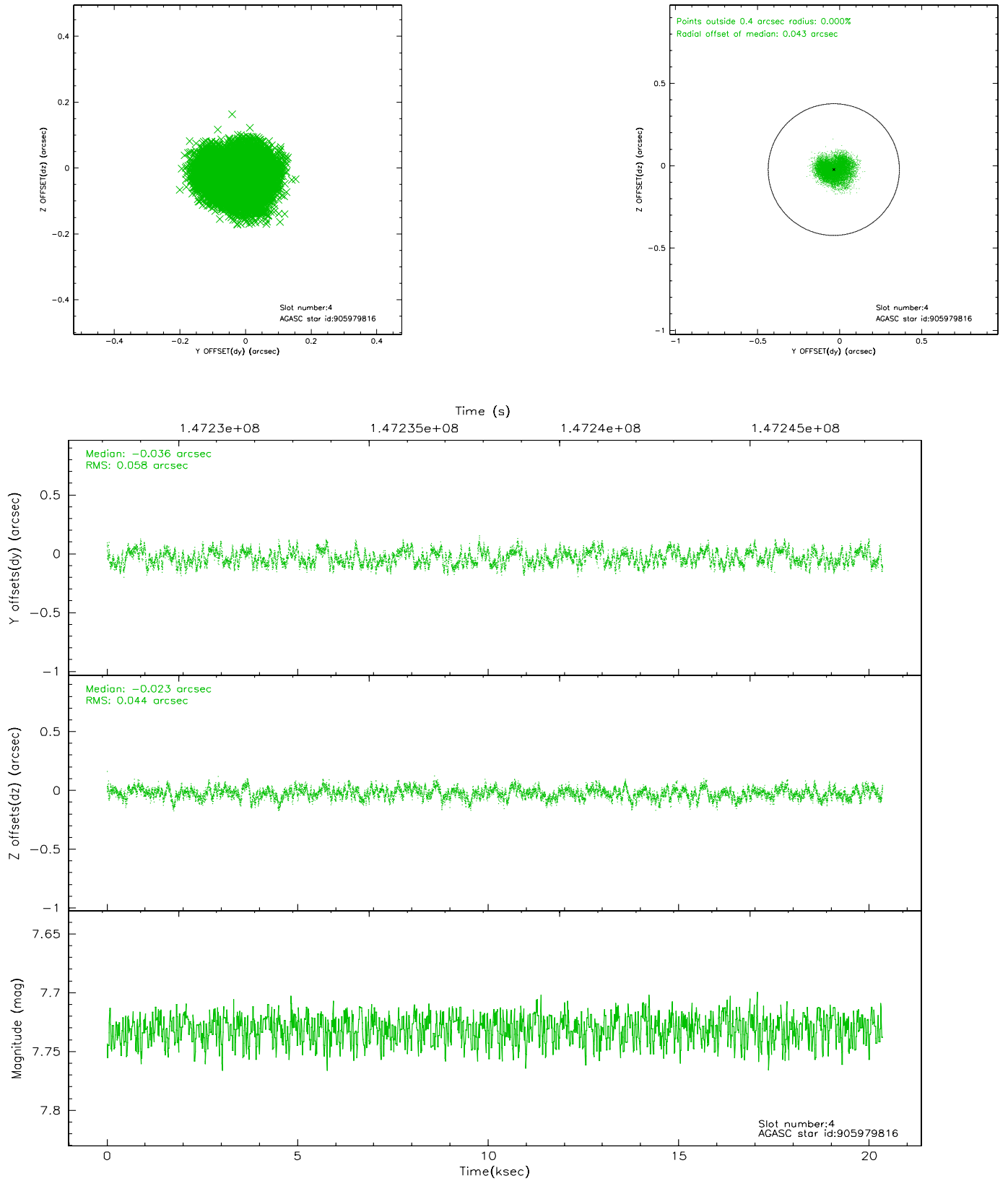
slot	status	id	mag	n_pts	med_dy	med_dz	dr1	dr2	ra	dec	mean_y	mean_z
0	FID	ACIS-S-2	7.12	4964	-0.016	0.029	0.007	0.011	0.000000	0.000000	-755.43	-1727.89
1	FID	ACIS-S-4	7.20	4964	-0.053	-0.000	0.005	0.009	0.000000	0.000000	2157.71	180.41
2	FID	ACIS-S-5	7.24	4964	0.038	-0.020	0.006	0.010	0.000000	0.000000	-1808.00	174.23
3	GUIDE	905985040	6.64	9929	-0.019	-0.213	0.076	0.111	309.467617	-25.109217	-912.17	-876.86
4	GUIDE	905979816	7.73	9928	-0.036	-0.023	0.080	0.121	309.213643	-25.636405	462.05	-2424.62
5	GUIDE	907681776	9.87	9922	-0.033	0.125	0.135	0.212	310.488734	-25.646315	2249.36	1308.15
6	GUIDE	907675608	8.62	9926	-0.183	-0.006	0.106	0.161	310.605739	-25.324874	1366.93	2148.02
7	BAD	907676176	10.62	7043	0.371	0.165	0.212	0.353	310.198332	-24.524102	-1809.39	2179.79

2.4 Star Slots

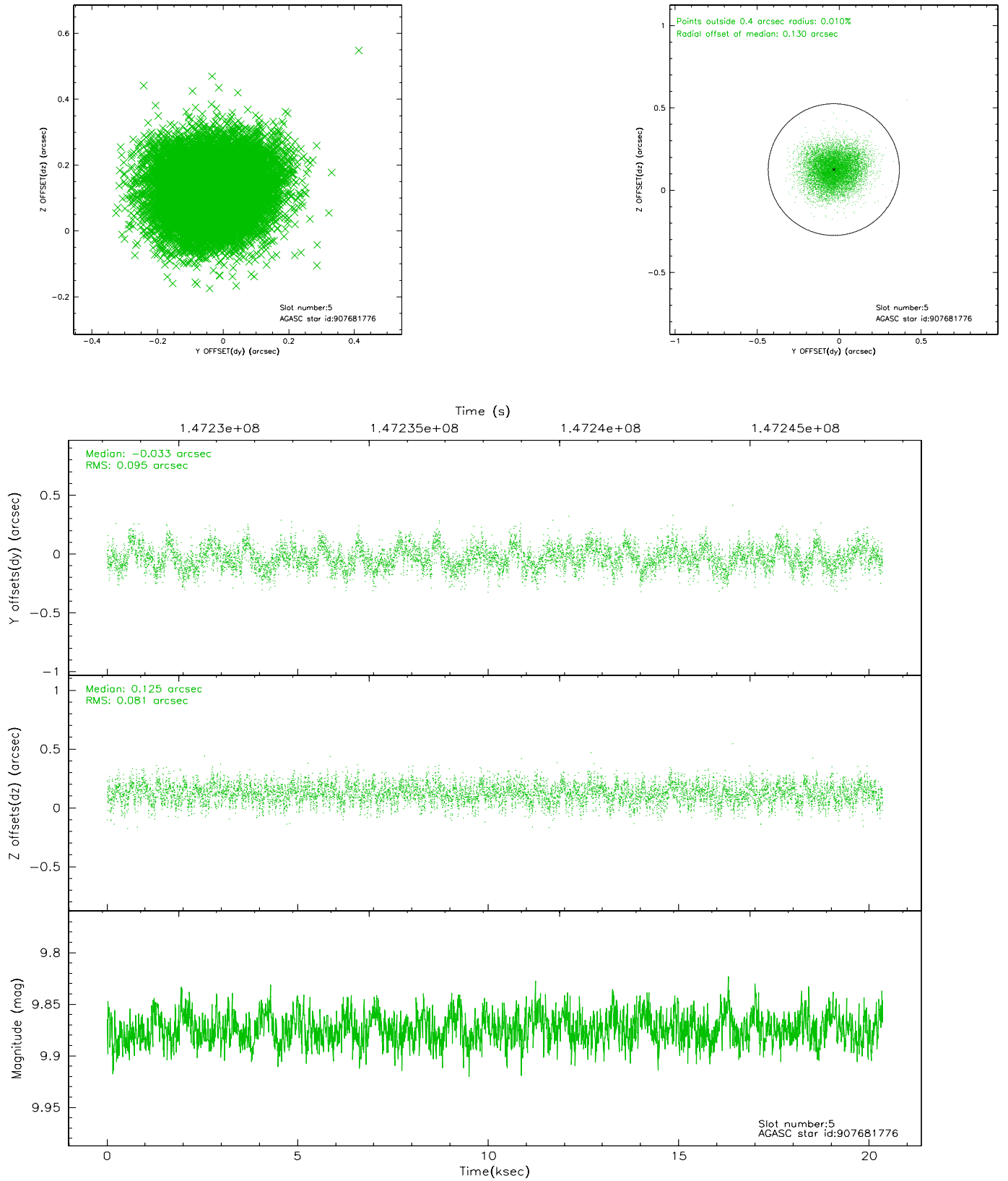
2.4.1 Slot 3



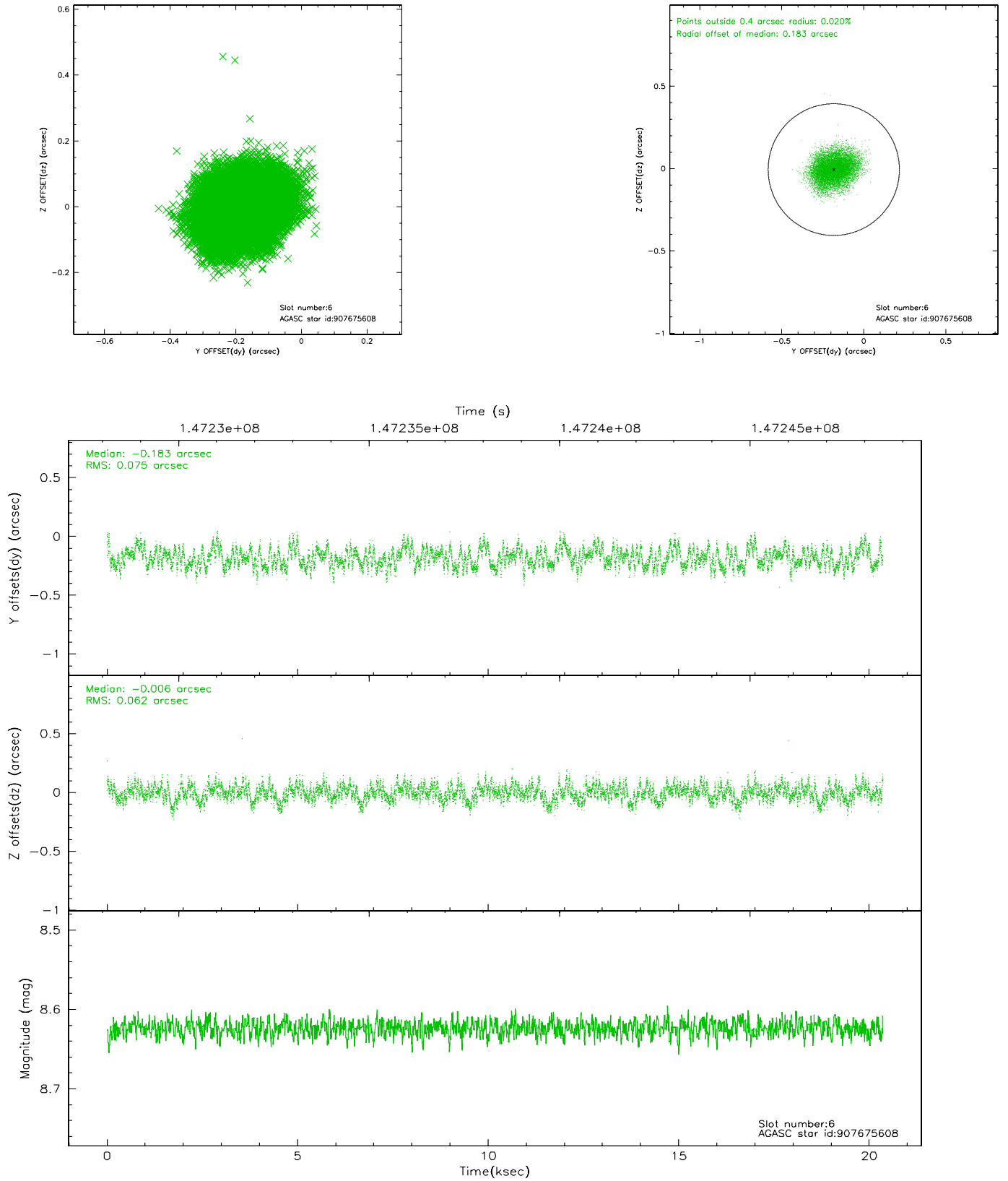
2.4.2 Slot 4



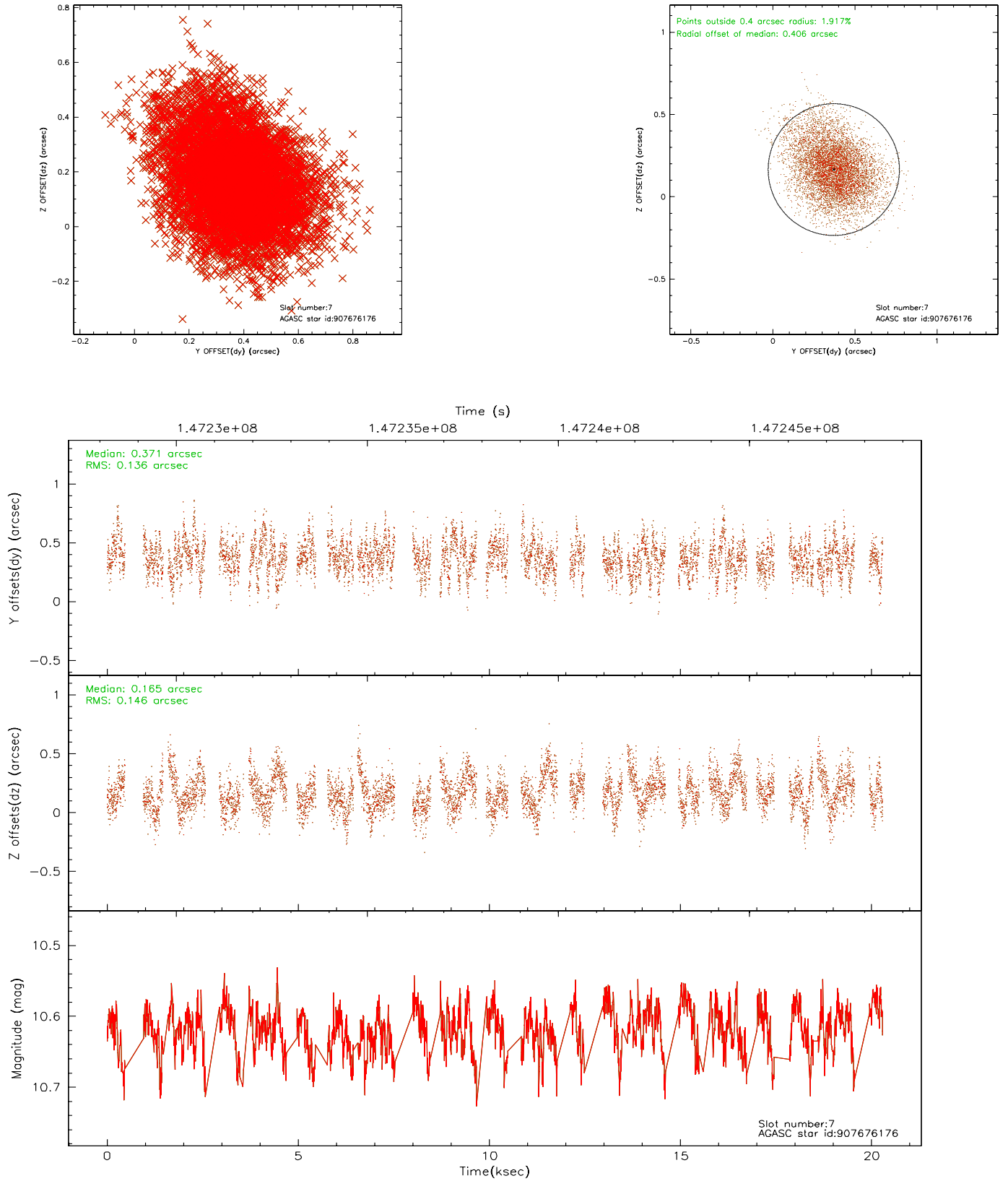
2.4.3 Slot 5



2.4.4 Slot 6

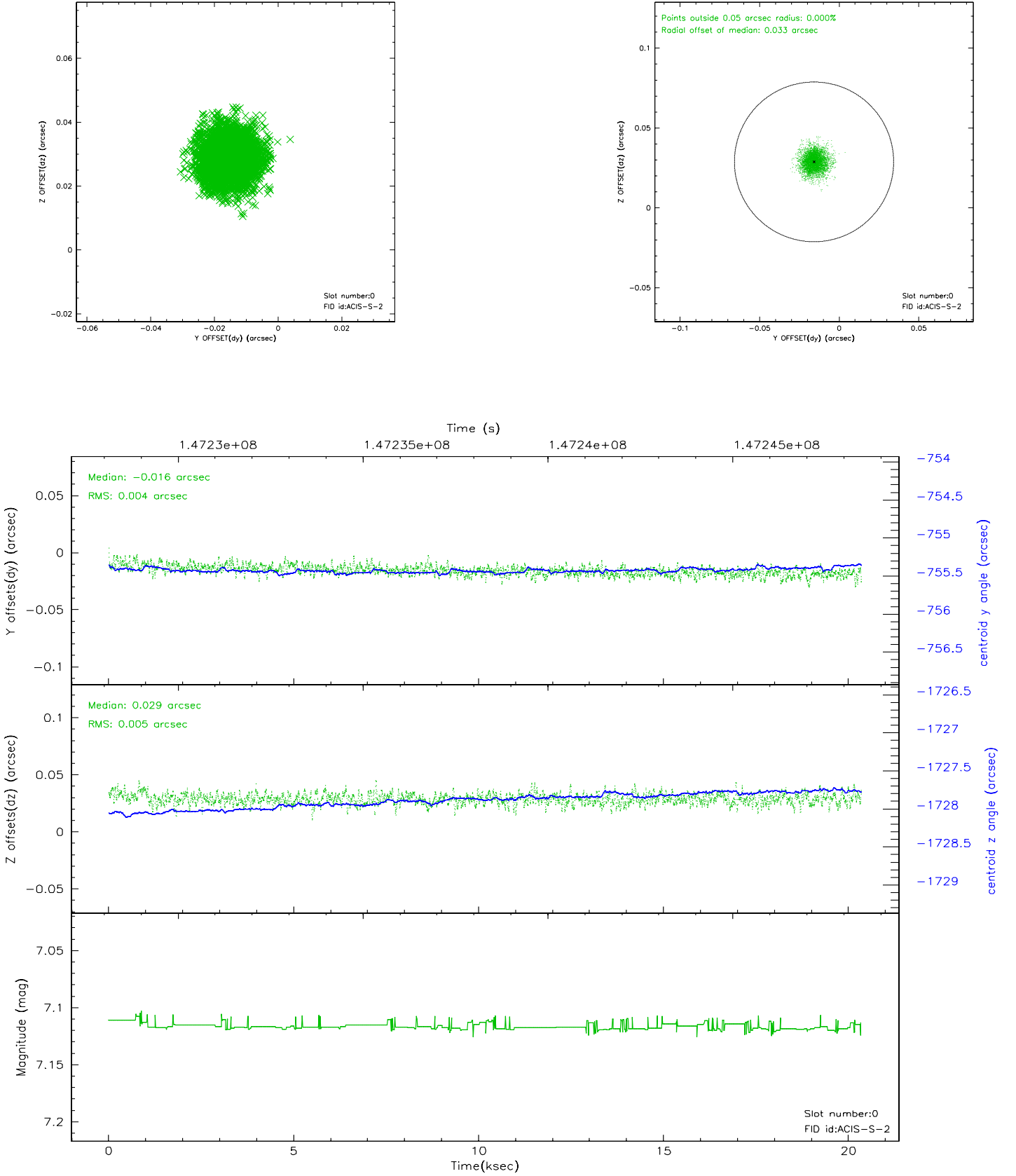


2.4.5 Slot 7

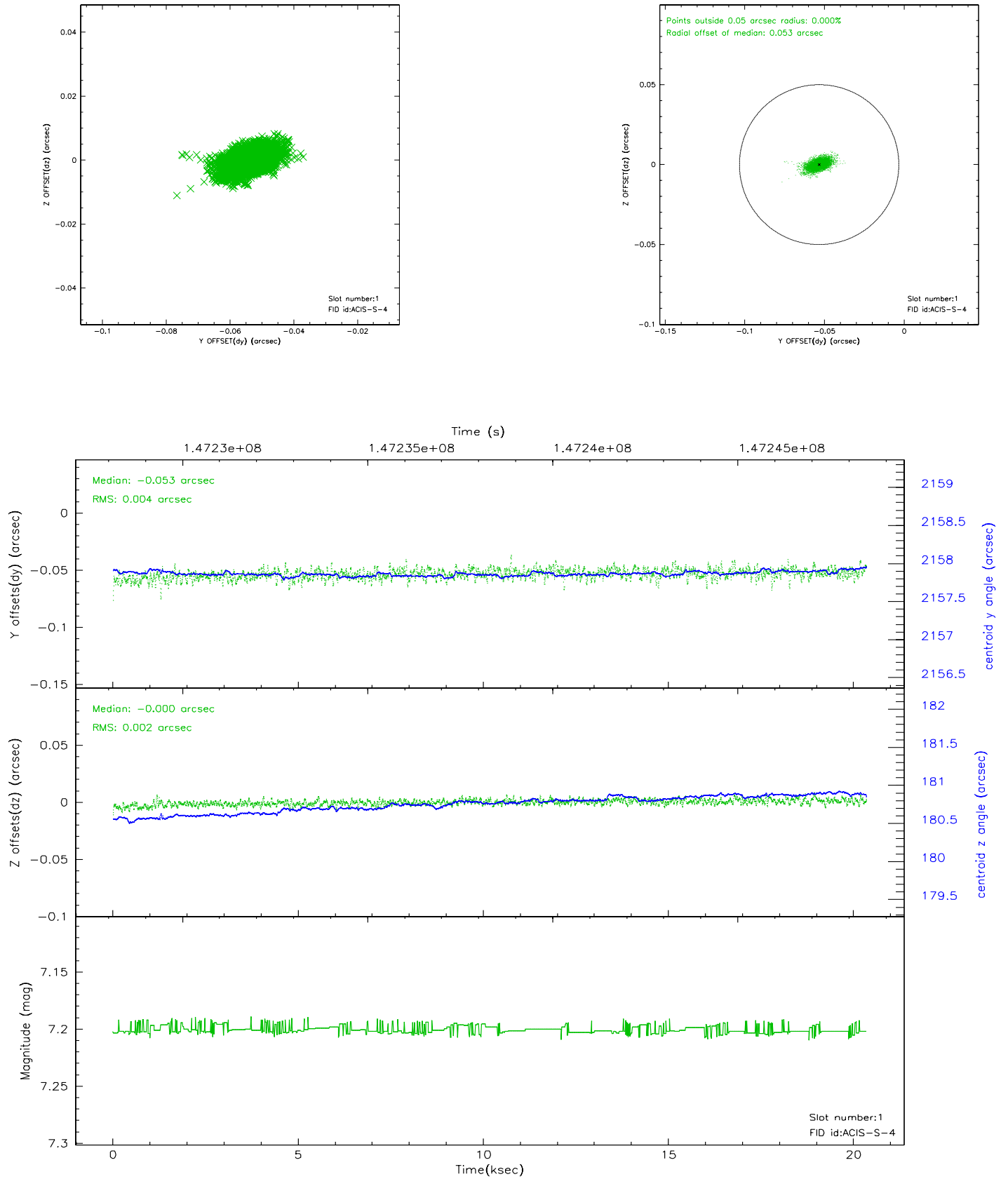


2.5 FID Slots

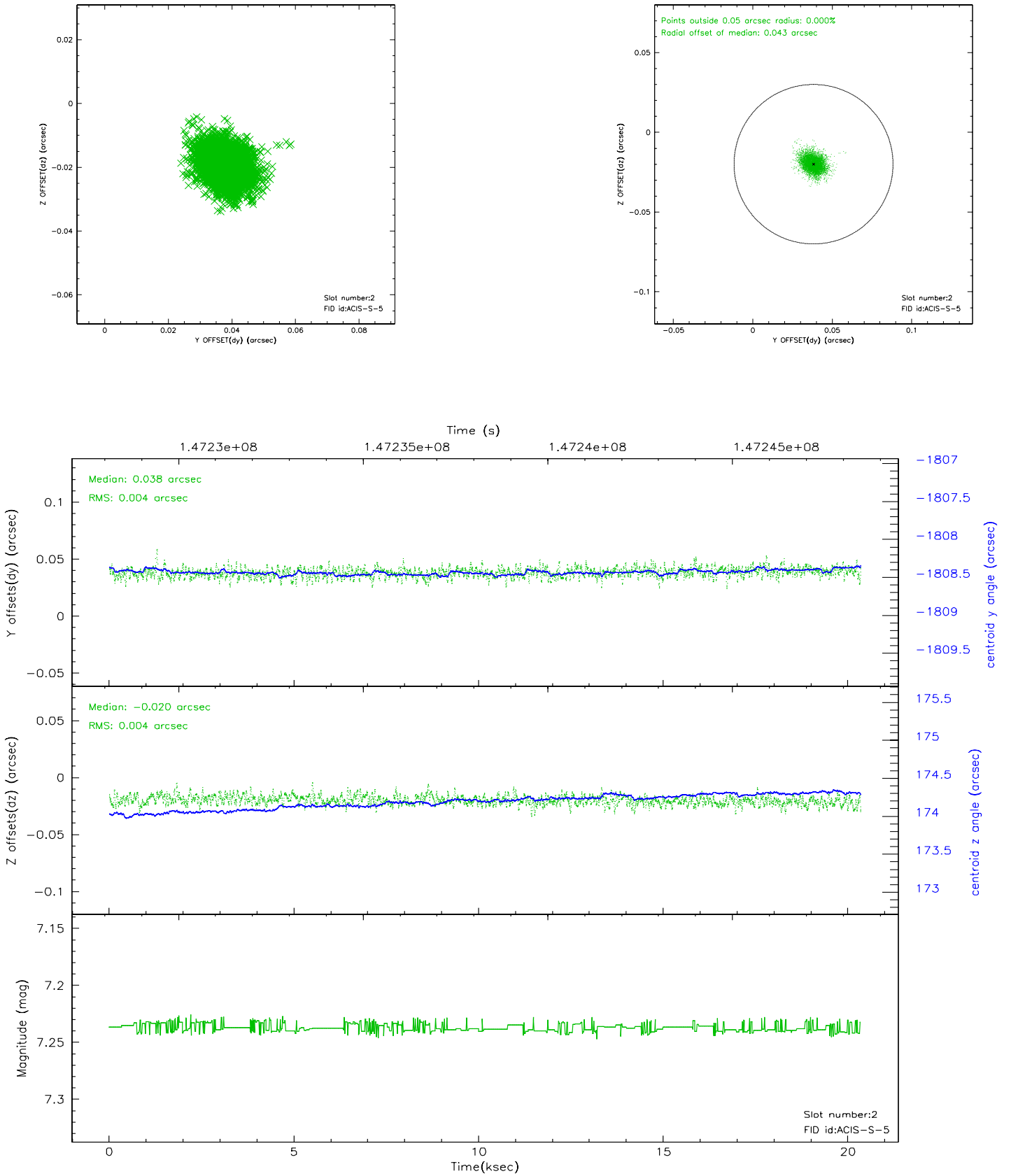
2.5.1 Slot 0



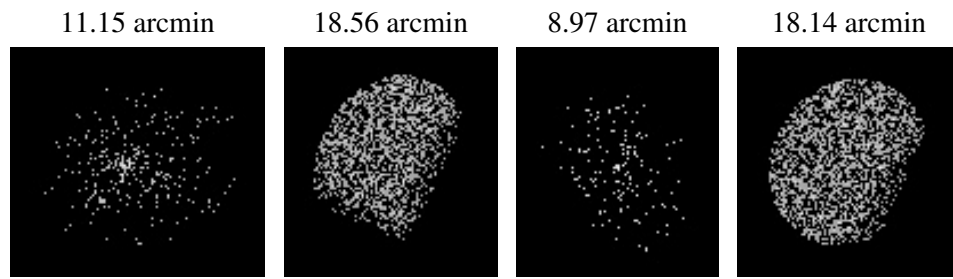
2.5.2 Slot 1



2.5.3 Slot 2



3 Point Sources



A Summary

A.1 Status

V&V Scientist	Jen Lauer
V&V Date (YYYY-MM-DD)	2006.10.03
V&V Edition	1
V&V Disposition and Status	OK
V&V Charge Time	19.961

A.2 Comments

Slot 7 was only tracked for 73% of the observation and is therefore marked bad. The loss of one guide star should not adversely affect the aspect solution.