

# V&V Reference Report

## L2 ASCDS Version : 7.6.9

Observation 3000 - L2 Version 001  
Chandra X-Ray Center

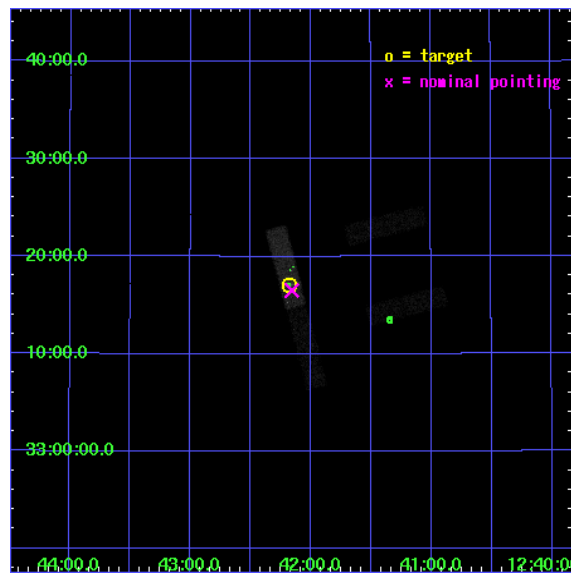
L2 Processing Date : Sep 22 2006

## Contents

<b>1</b>	<b>Front</b>	<b>2</b>
<b>2</b>	<b>OBI</b>	<b>3</b>
2.1	OBI . . . . .	3
2.1.1	Images . . . . .	3
2.1.2	Bias . . . . .	3
2.1.3	Parameters . . . . .	4
2.1.4	Events . . . . .	4
2.2	Compared Parameters . . . . .	5
2.3	Aspect . . . . .	6
2.4	Star Slots . . . . .	9
2.4.1	Slot 3 . . . . .	9
2.4.2	Slot 4 . . . . .	10
2.4.3	Slot 5 . . . . .	11
2.4.4	Slot 6 . . . . .	12
2.4.5	Slot 7 . . . . .	13
2.5	FID Slots . . . . .	14
2.5.1	Slot 0 . . . . .	14
2.5.2	Slot 1 . . . . .	15
2.5.3	Slot 2 . . . . .	16
<b>3</b>	<b>Point Sources</b>	<b>17</b>
<b>A</b>	<b>Summary</b>	<b>18</b>
A.1	Status . . . . .	18
A.2	Comments . . . . .	18

# 1 Front

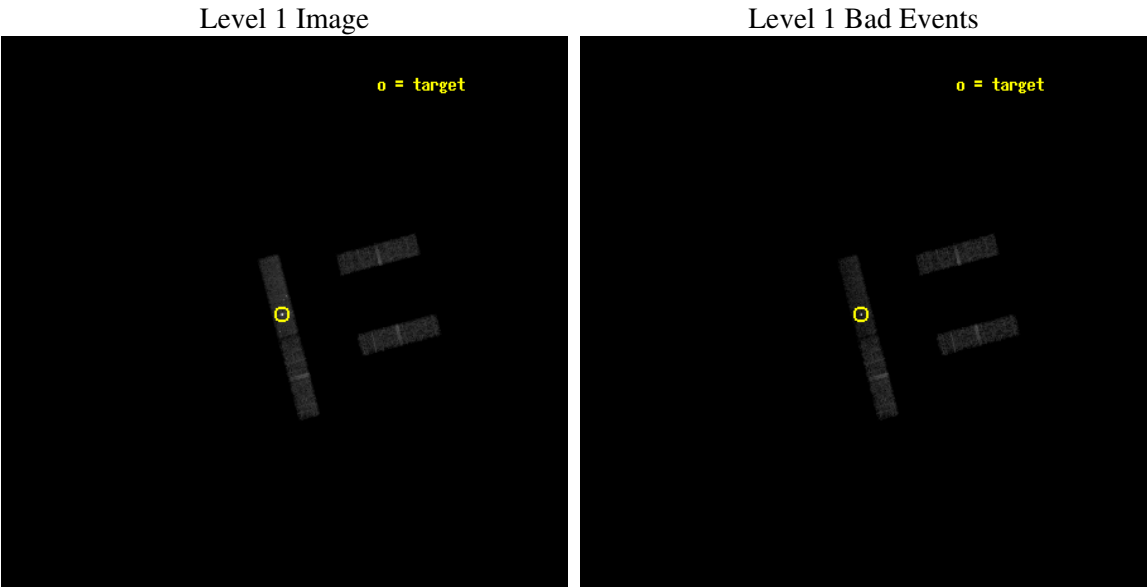
seq_num	700439
obs_id	3000
title	CHANDRA SNAPSHOT OBSERVATIONS OF SOFT X-RAY TRANSIENT AGN
observer	Dr Rick Edelson
object	WAS 61
dtcycle	0
cycle	P
ra_targ	190.544167
dec_targ	33.284167
ra_nom	190.53925056228
dec_nom	33.275379432921
roll_nom	255.26550576355
revision	2
ontime	10149.958989918
livetime	9749.8261257188
ontime2	10151.0
ontime3	10151.0
ontime6	10149.958989918
ontime7	10149.958989918
l2events	23449



# 2 OBI

## 2.1 OBI

### 2.1.1 Images



### 2.1.2 Bias

Chip 2

Chip 3

Chip 6



Chip 7



### 2.1.3 Parameters

obi_num	0
ascdsver	7.6.9
caldbver	3.2.3
date	2006-09-22T20:03:31
revision	2

sched_exp_time	10000.000000
ontime	11040.092473209
ontime2	11041.133483291
ontime3	11041.133483291
ontime6	11040.092473209
ontime7	11040.092473209
l1events	106175

### 2.1.4 Events

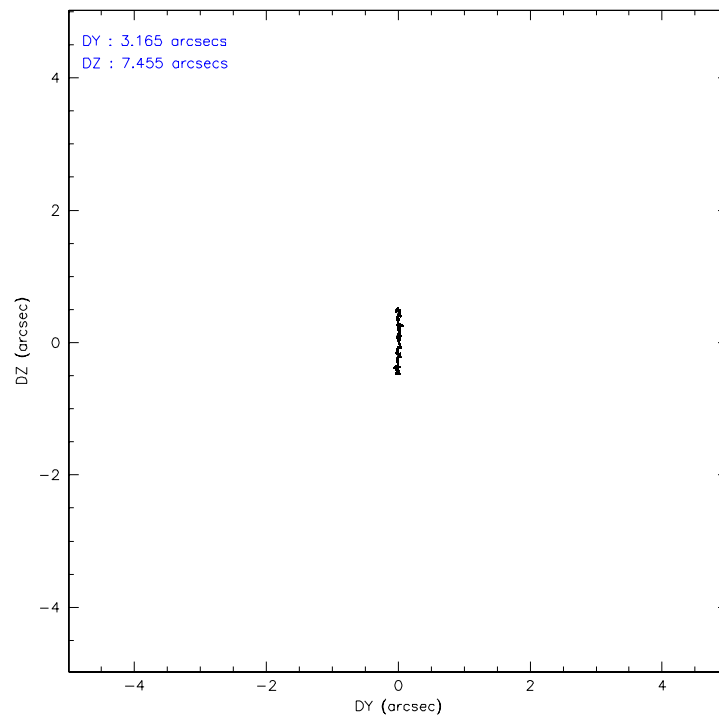
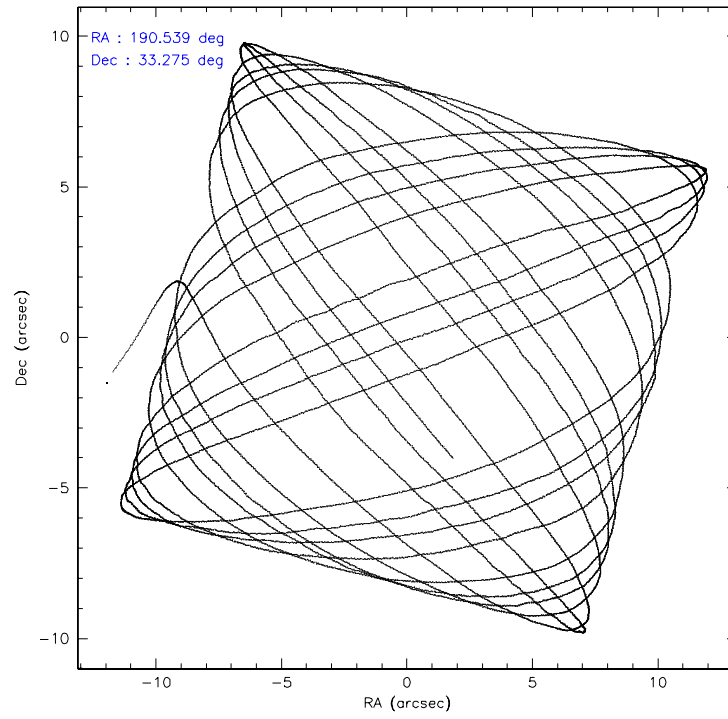
	ccd 2	ccd 3	ccd 6	ccd 7
level 1 events	22123	21916	23577	38559
rejected events	19767	19620	21097	20597
rejected %	89%	89%	89%	53%

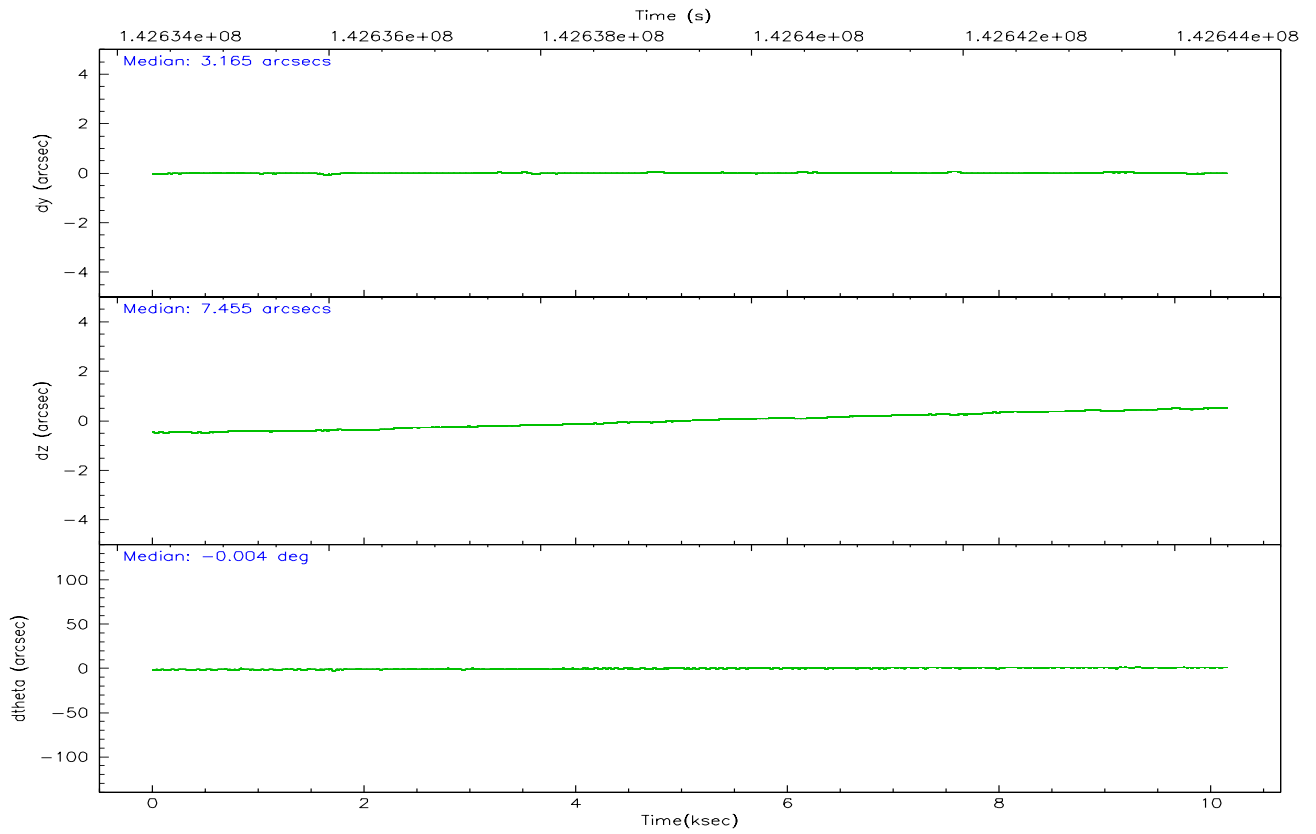
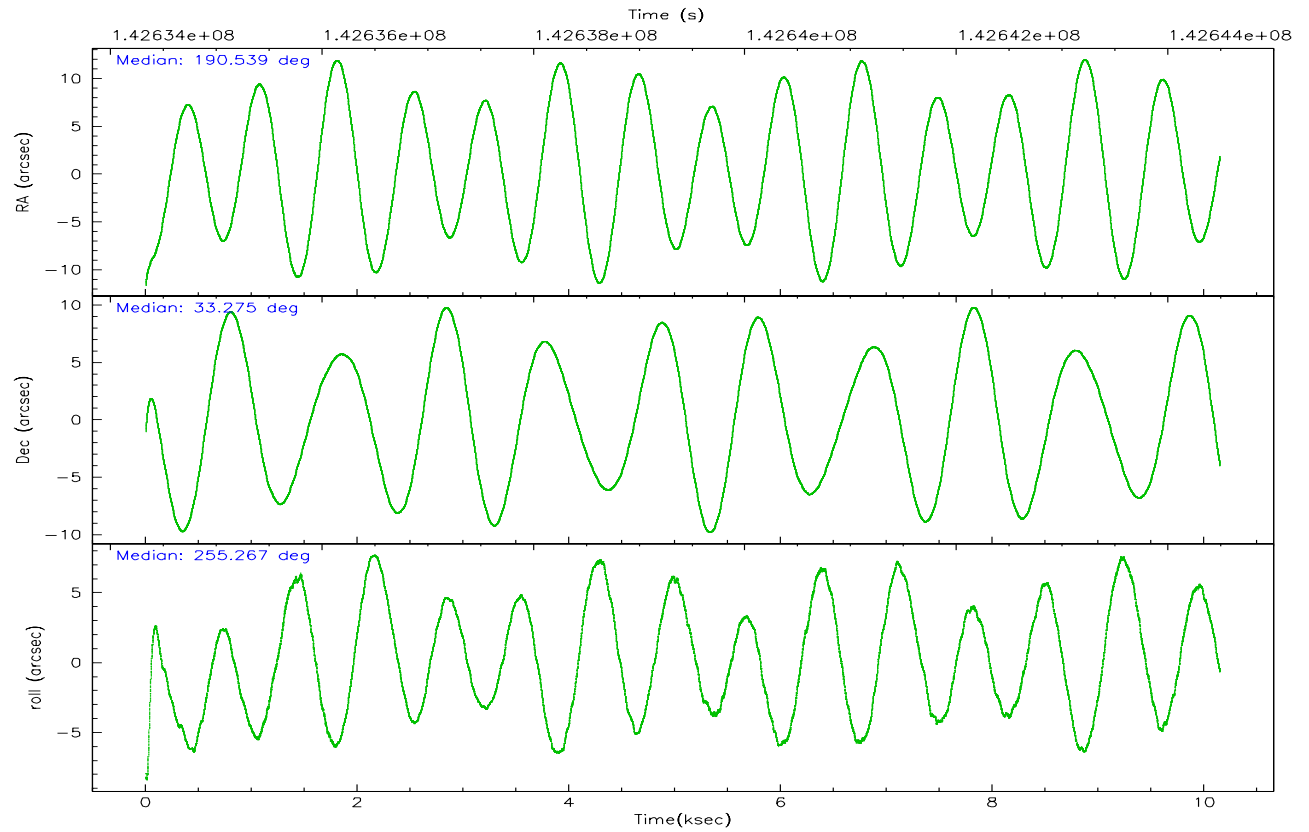
	ccd 2	ccd 3	ccd 6	ccd 7
grade 0 events	986	969	955	2792
	4%	4%	4%	7%
grade 1 events	5	5	5	361
	0%	0%	0%	0%
grade 2 events	498	429	511	4186
	2%	1%	2%	10%
grade 3 events	352	348	347	1597
	1%	1%	1%	4%
grade 4 events	347	341	373	1482
	1%	1%	1%	3%
grade 5 events	612	768	849	3143
	2%	3%	3%	8%
grade 6 events	403	392	476	8882
	1%	1%	2%	23%
grade 7 events	18920	18664	20061	16116
	85%	85%	85%	41%

## 2.2 Compared Parameters

Parameter	Planned	Actual	Parameter	Planned	Actual
Instrument	ACIS	ACIS	Obspar format version number	6	6
Detector	ACIS-2367	ACIS-2367	Obspar file type	PREDICTED	ACTUAL
Grating	NONE	NONE	Obspar update status	NONE	UPDATED
Data mode	FAINT	FAINT	Number of optional ACIS chips dropped	0	0
Observation mode	POINTING	POINTING	On-chip summing requested	N	N
Pointing RA	190.530306	190.5392505622801	Subarray requested	1/4	1/4
Pointing Dec	33.301566	33.27537943292133	Subarray start row	0	385
Pointing Roll	255.113802	255.2655057635471	Subarray row count	1024	256
SIM focus pos (mm)	-0.684267	-0.6828225247311905	Alternating exposures requested	N	N
SIM defocus (mm)	0	0.001444936568705701	Primary exposure time	0.000000	1
SIM translation stage pos (mm)	-190.132523	-190.1425803651734			
SIM translation stage offset (mm)	0	0.01005778216563158			
Observation start time	142634492.184000	142633341.02783			
Observation start date	2002-07-09T20:40:28	2002-07-09T20:22:21			
Observation end time	142644492.184000	142644626.2783			
Observation end date	2002-07-09T23:27:08	2002-07-09T23:30:26			
Read mode	TIMED	TIMED			

## 2.3 Aspect





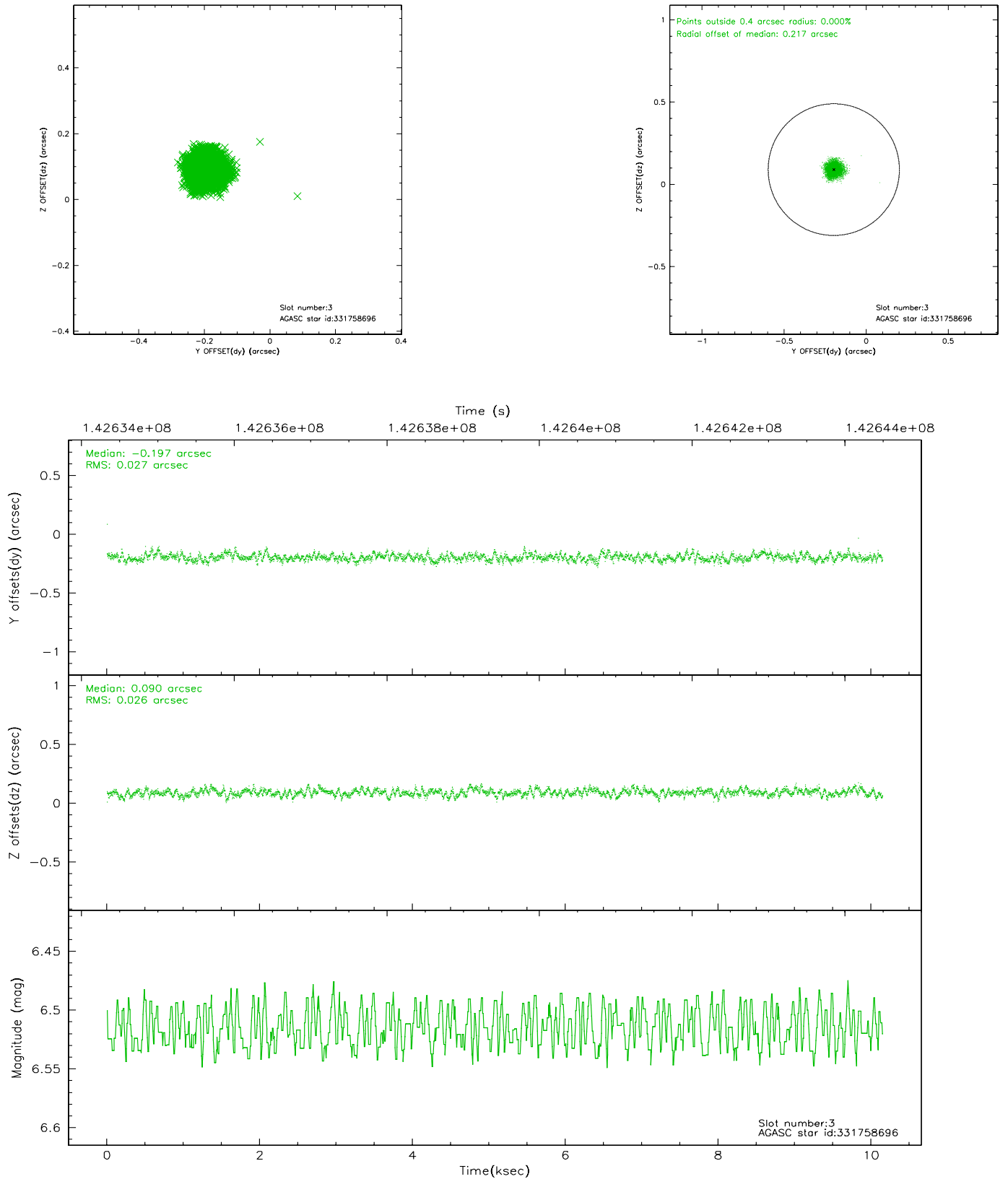
### Slot Statistics

slot	status	id	mag	n_pts	med_dy	med_dz	dr1	dr2	ra	dec	mean_y	mean_z
0	FID	ACIS-S-2	7.11	2476	0.003	0.021	0.008	0.014	0.000000	0.000000	-755.82	-1728.56
1	FID	ACIS-S-4	7.20	2476	-0.047	-0.007	0.006	0.011	0.000000	0.000000	2157.18	179.35
2	FID	ACIS-S-5	7.24	2476	0.014	-0.006	0.008	0.013	0.000000	0.000000	-1807.97	173.63
3	GUIDE	331758696	6.52	4952	-0.197	0.090	0.040	0.064	190.573893	33.688583	-1380.54	-230.91
4	GUIDE	331755184	7.38	4952	-0.063	-0.026	0.054	0.090	191.432991	33.541306	-1542.31	2394.09
5	GUIDE	331755928	8.87	4949	0.001	-0.118	0.062	0.103	190.670595	33.439059	-587.89	281.64
6	GUIDE	331756840	9.13	4947	0.237	-0.038	0.074	0.123	190.519091	32.862982	1534.15	374.13
7	GUIDE	331754696	9.20	4946	0.016	0.094	0.084	0.135	190.978789	32.921163	972.21	1662.23

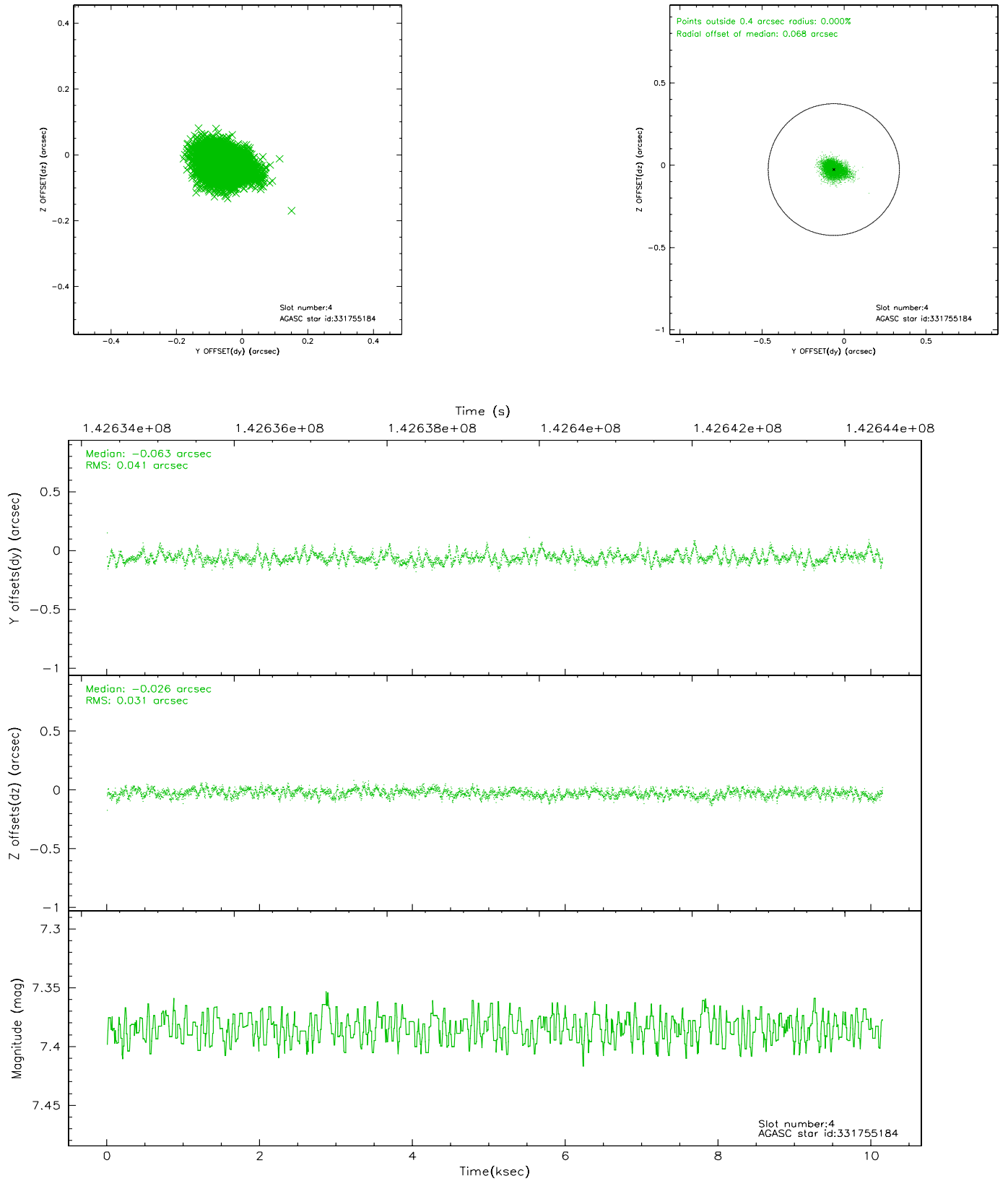


## 2.4 Star Slots

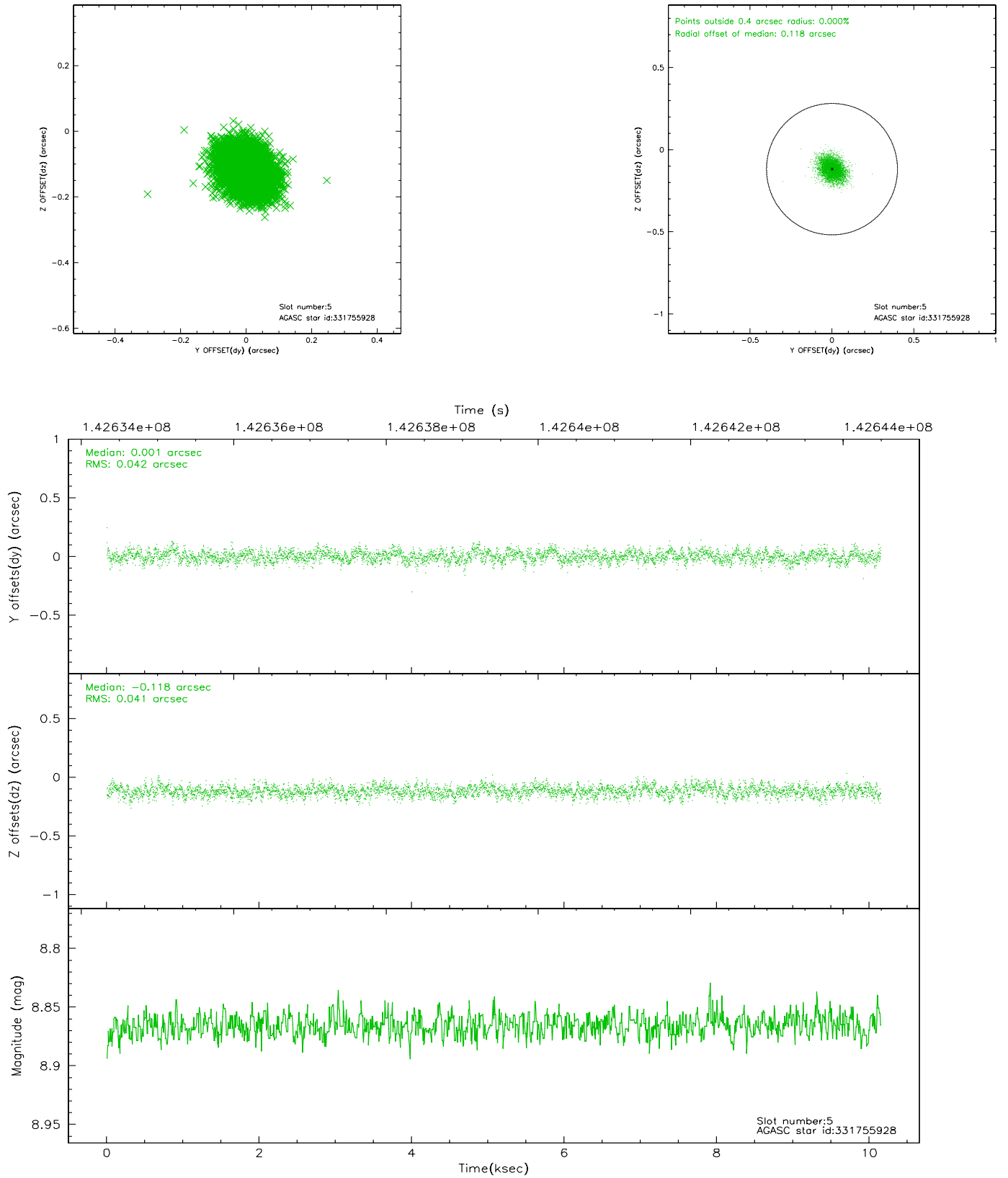
### 2.4.1 Slot 3



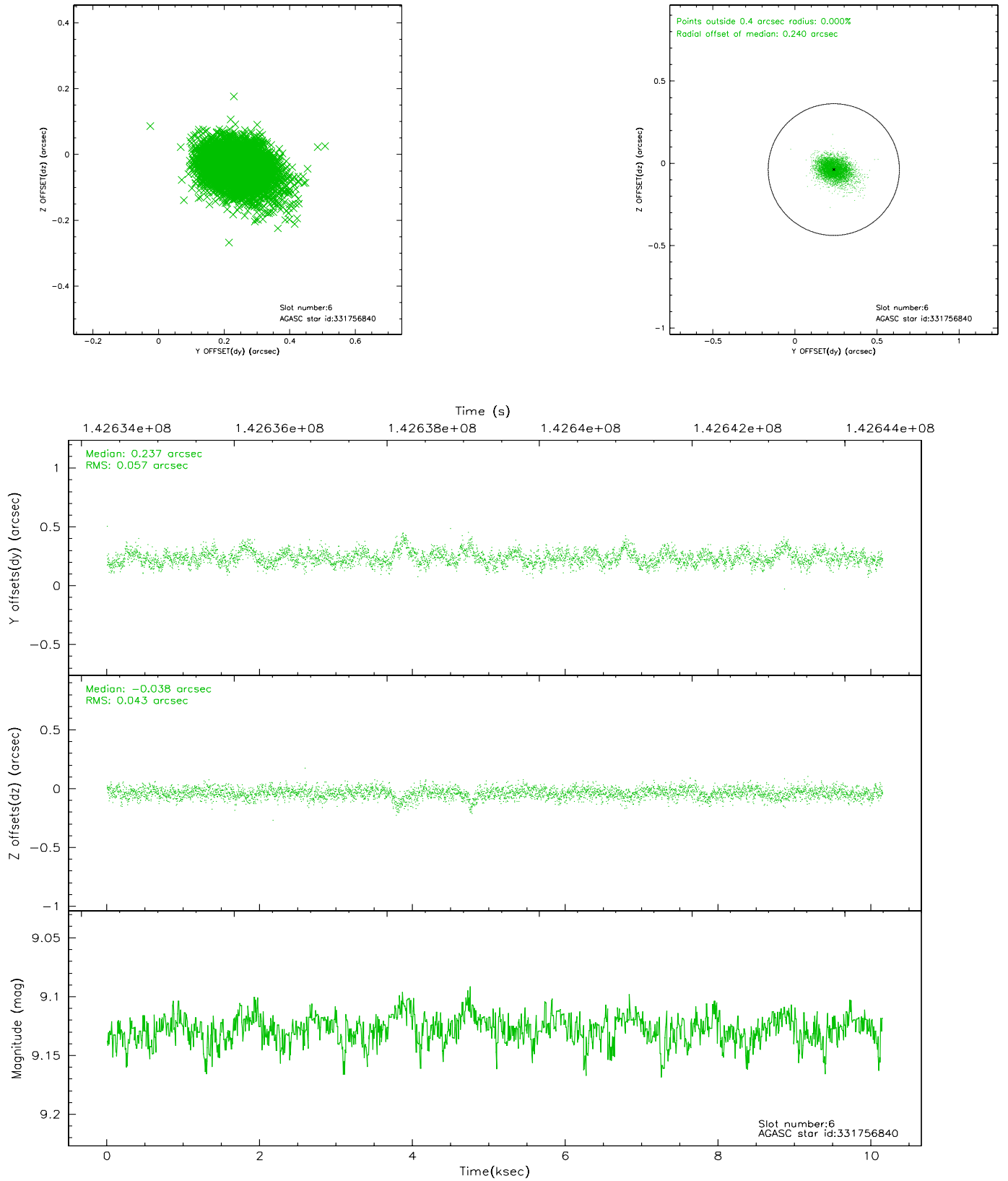
## 2.4.2 Slot 4



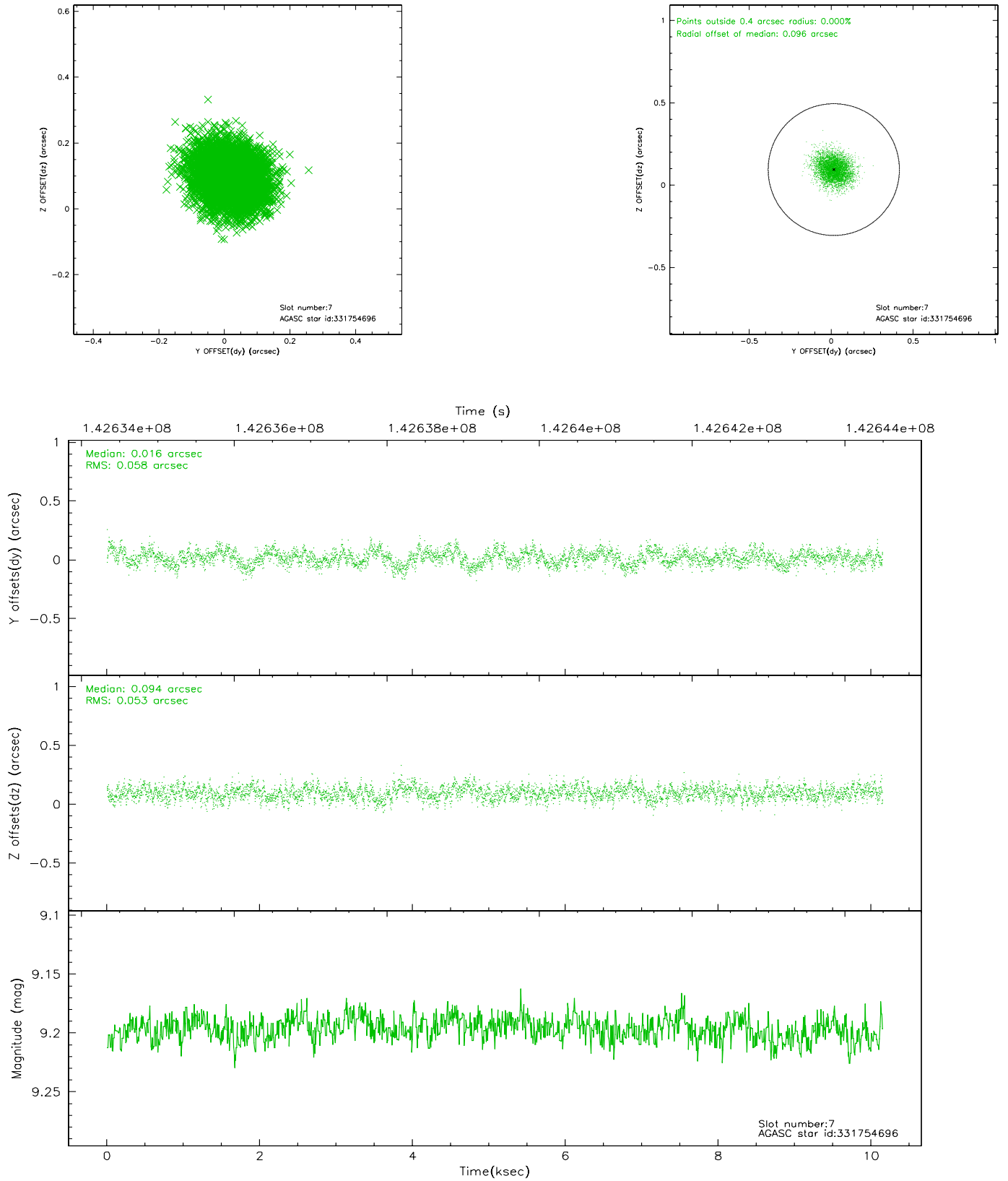
### 2.4.3 Slot 5



## 2.4.4 Slot 6

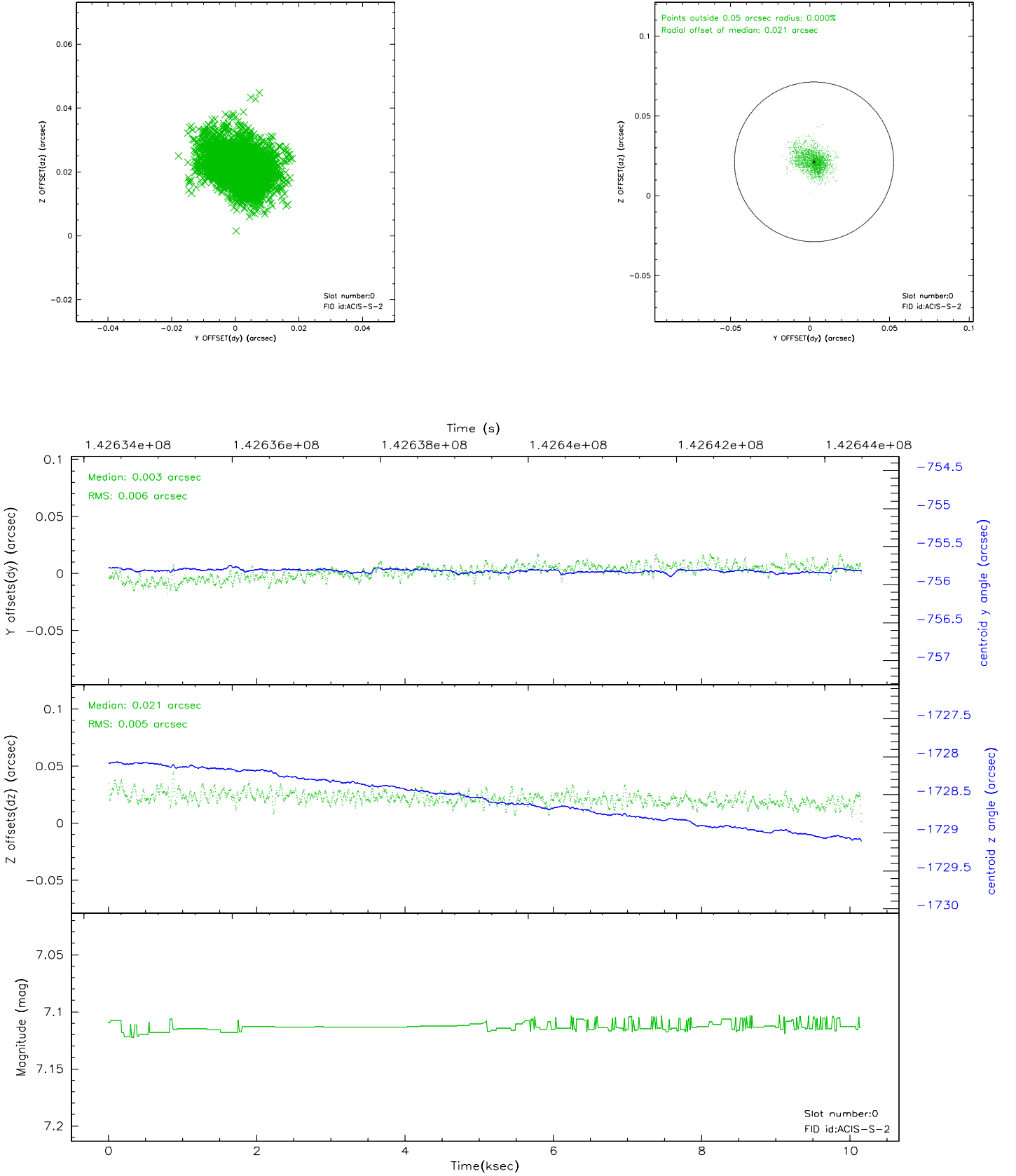


## 2.4.5 Slot 7

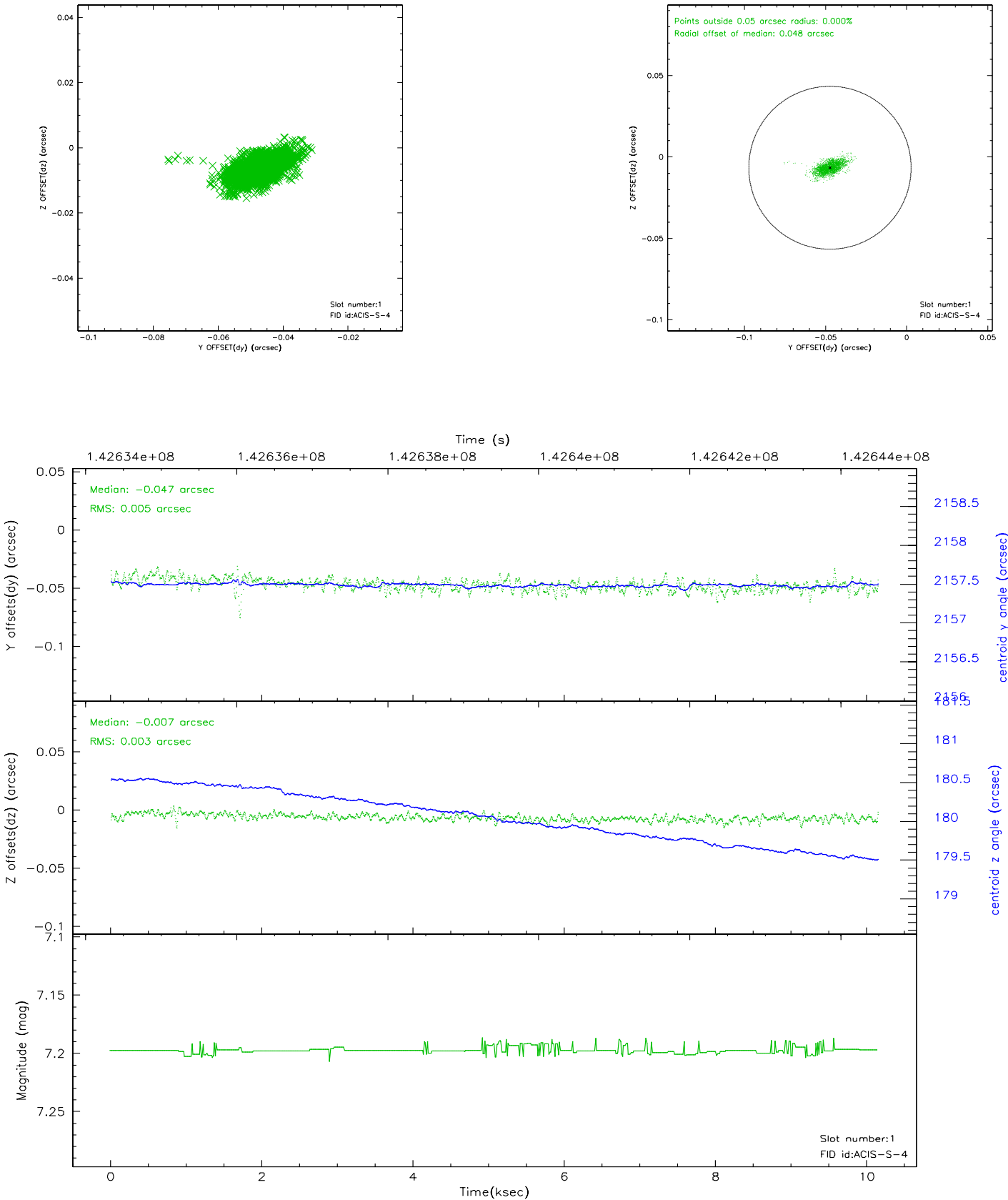


## 2.5 FID Slots

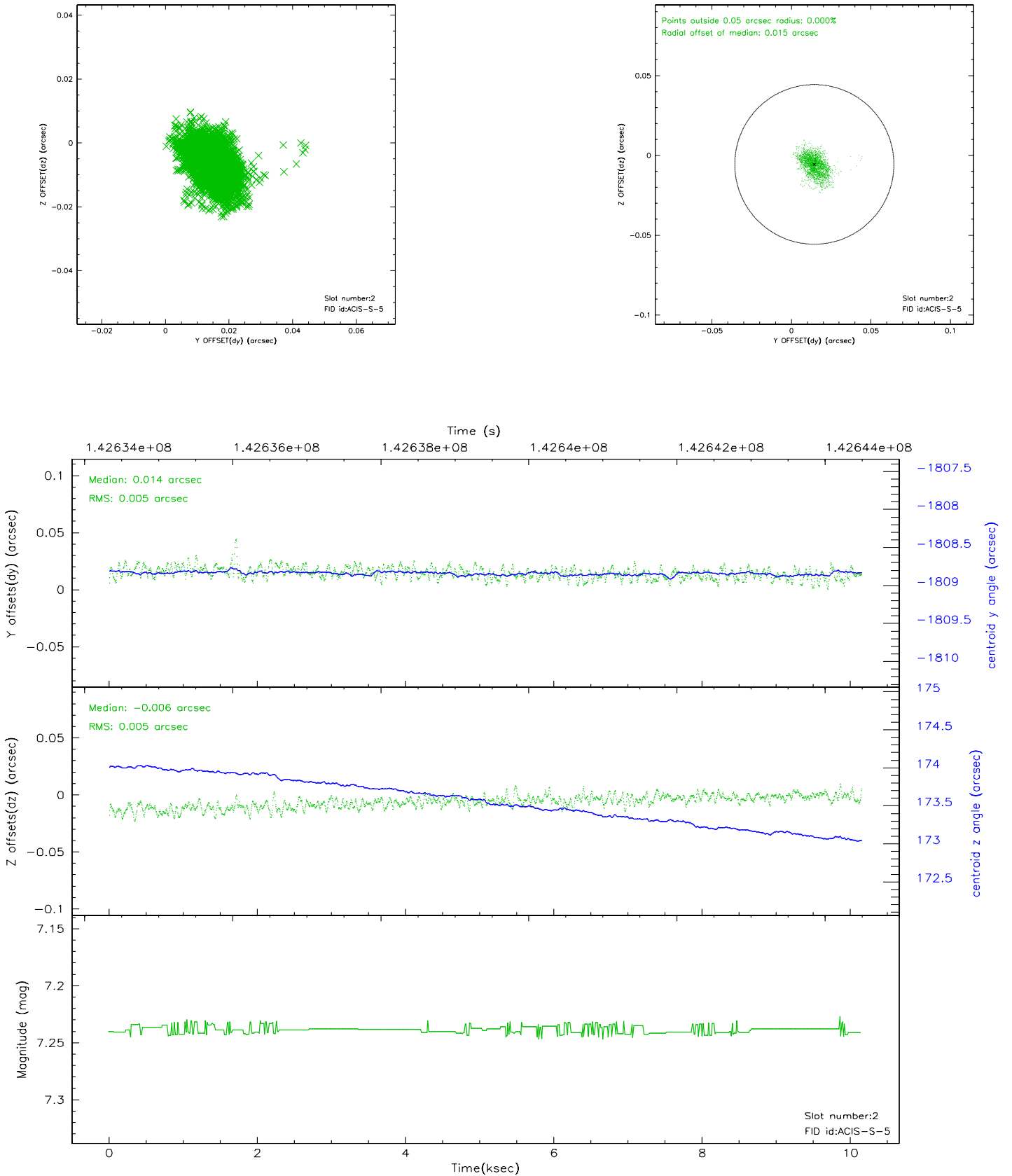
### 2.5.1 Slot 0



2.5.2 Slot 1



### 2.5.3 Slot 2





### 3 Point Sources

10.72 arcmin



## A Summary

### A.1 Status

V&V Scientist	Beth Sundheim
V&V Date (YYYY-MM-DD)	2006.09.24
V&V Edition	1
V&V Disposition and Status	OK
V&V Charge Time	10.149

### A.2 Comments