

V&V Reference Report

L2 ASCDS Version : 7.6.8.1

Observation 2970 - L2 Version 001
Chandra X-Ray Center

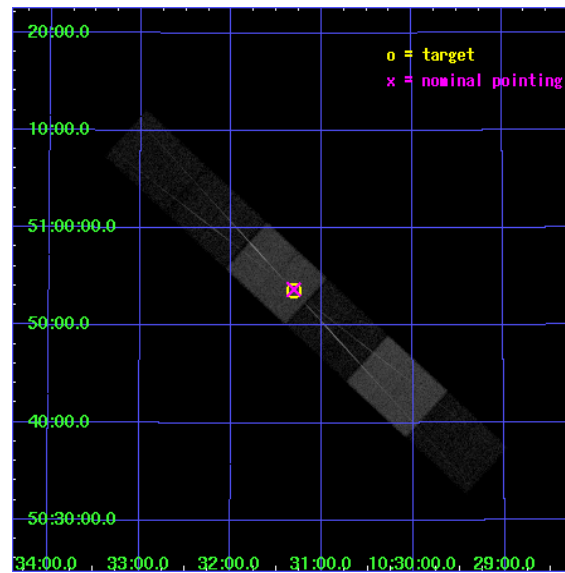
L2 Processing Date : Sep 8 2006

Contents

1	Front	2
2	OBI	3
2.1	OBI	3
2.1.1	Images	3
2.1.2	Bias	3
2.1.3	Parameters	4
2.1.4	Events	4
2.2	Compared Parameters	5
2.3	Aspect	6
2.4	Star Slots	9
2.4.1	Slot 3	9
2.4.2	Slot 4	10
2.4.3	Slot 5	11
2.4.4	Slot 6	12
2.4.5	Slot 7	13
2.5	FID Slots	14
2.5.1	Slot 0	14
2.5.2	Slot 1	15
2.5.3	Slot 2	16
3	Gratings	17
3.1	HEG Arm	17
3.2	MEG Arm	19
A	Summary	21
A.1	Status	21
A.2	Comments	21

1 Front

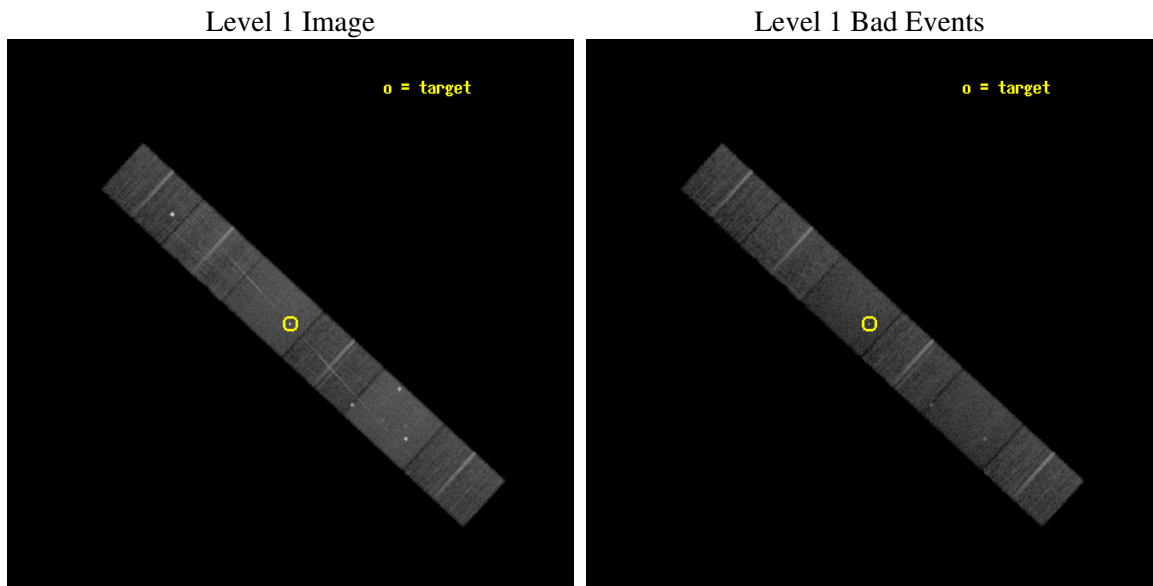
seq_num	700409
obs_id	2970
title	PROBING THE INTERGALACTIC MEDIUM AT LOW REDSHIFT
observer	Prof. Claude Canizares
object	1ES 1028+511
dtcycle	0
cycle	P
ra_targ	157.826667
dec_targ	50.893333
ra_nom	157.82653942595
dec_nom	50.89554742672
roll_nom	222.60673173652
revision	2
ontime	21757.5
livetime	21406.097503384
ontime4	21757.5
ontime5	21757.5
ontime6	21757.5
ontime7	21757.5
ontime8	21757.5
ontime9	21757.5
l2events	170163



2 OBI

2.1 OBI

2.1.1 Images

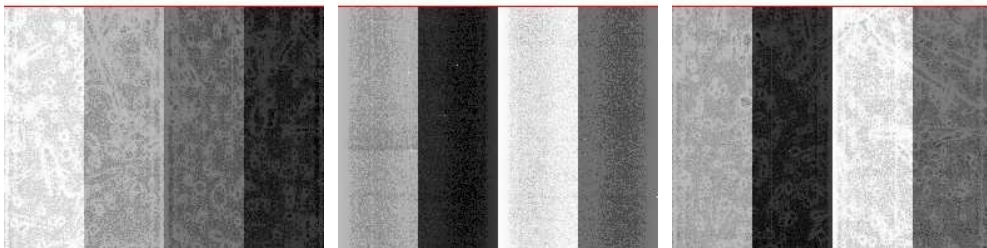


2.1.2 Bias

Chip 4

Chip 5

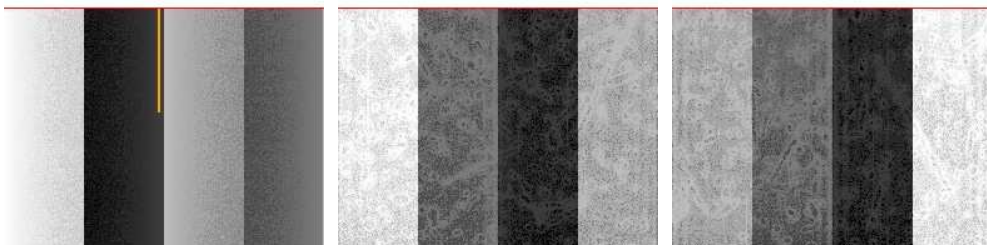
Chip 6



Chip 7

Chip 8

Chip 9



2.1.3 Parameters

obi_num	0
ascdsver	7.6.8.1
caldbver	3.2.3
date	2006-09-08T11:53:30
revision	2

sched_exp_time	22000.000000
ontime	21761.238681823
ontime4	21761.238661915
ontime5	21761.238681823
ontime6	21761.238661915
ontime7	21761.238681823
ontime8	21761.238661915
ontime9	21761.238641992
l1events	760801

2.1.4 Events

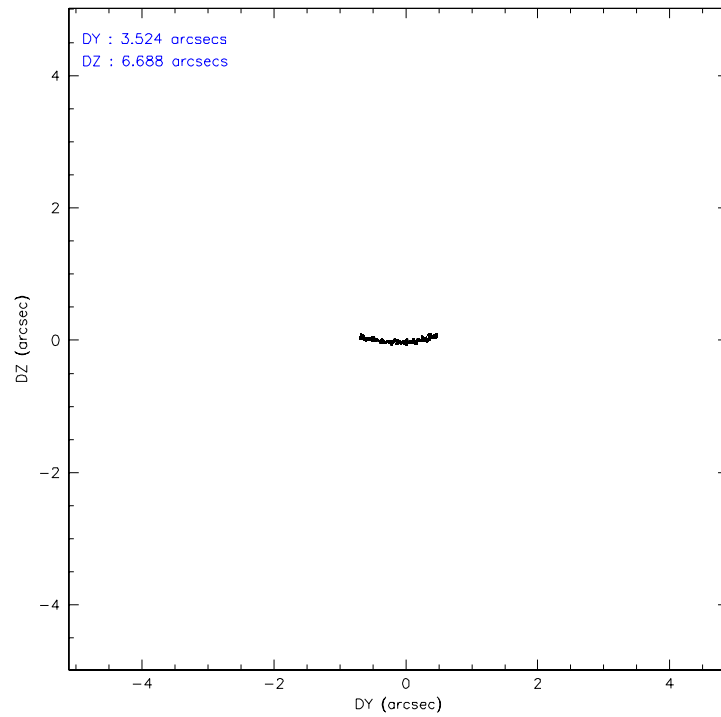
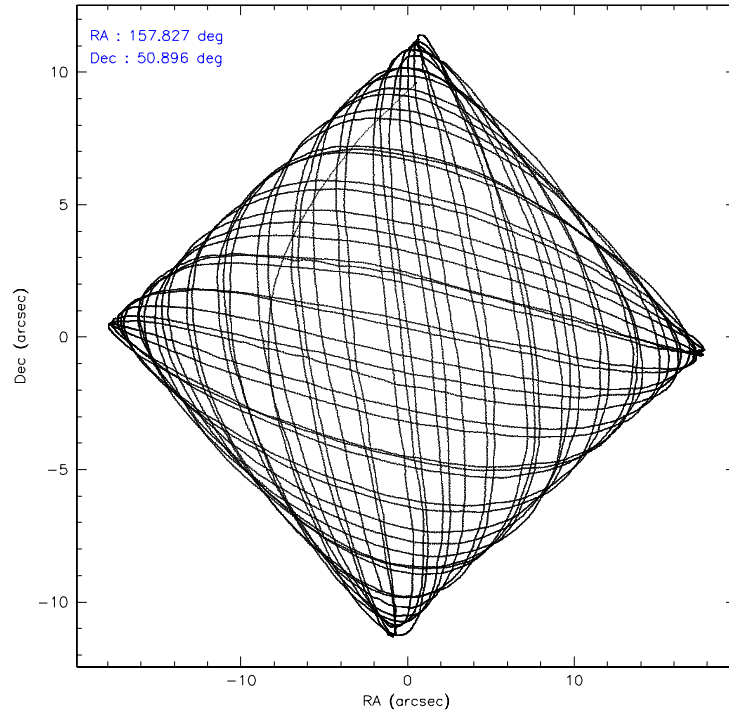
	ccd 4	ccd 5	ccd 6	ccd 7	ccd 8	ccd 9
level 1 events	113231	152664	108761	141375	134492	110278
rejected events	100098	80661	92830	81509	105055	89988
rejected %	88%	52%	85%	57%	78%	81%

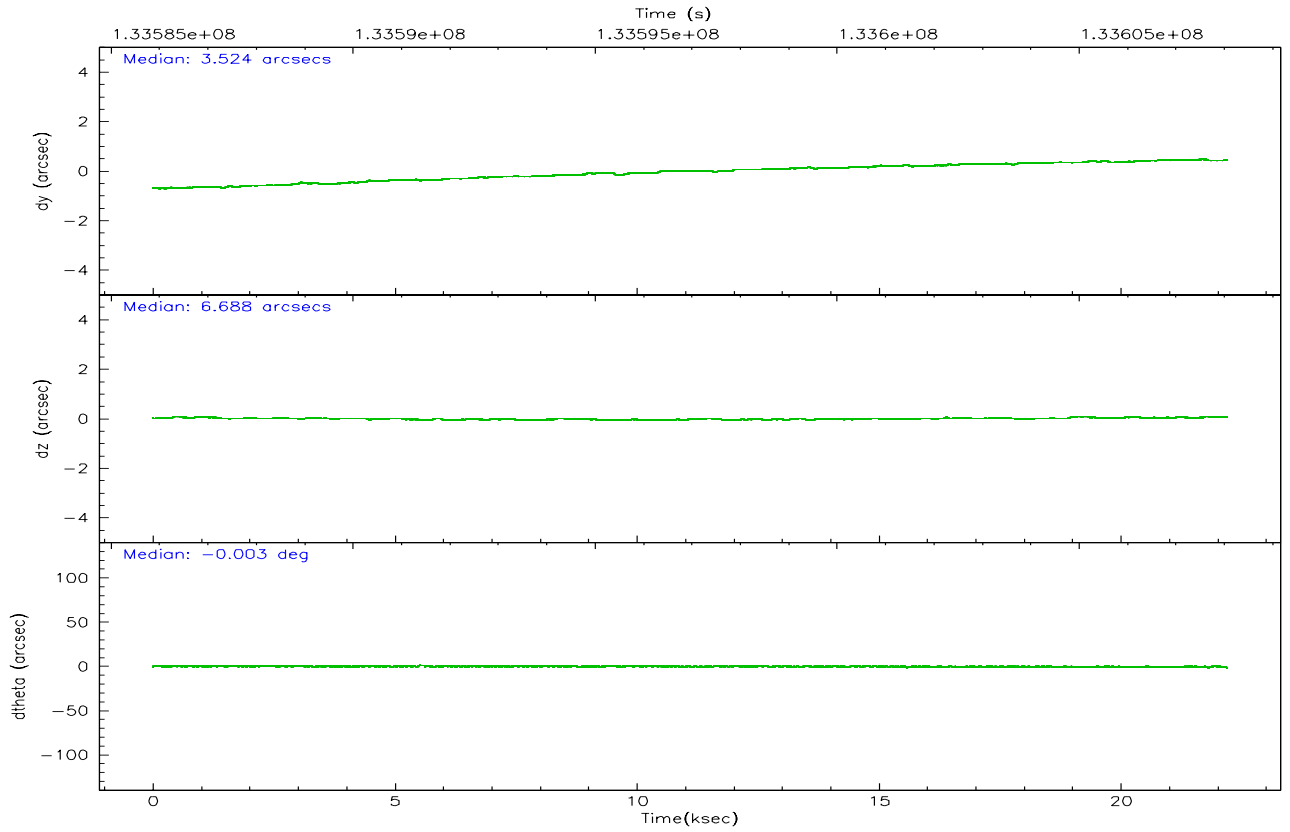
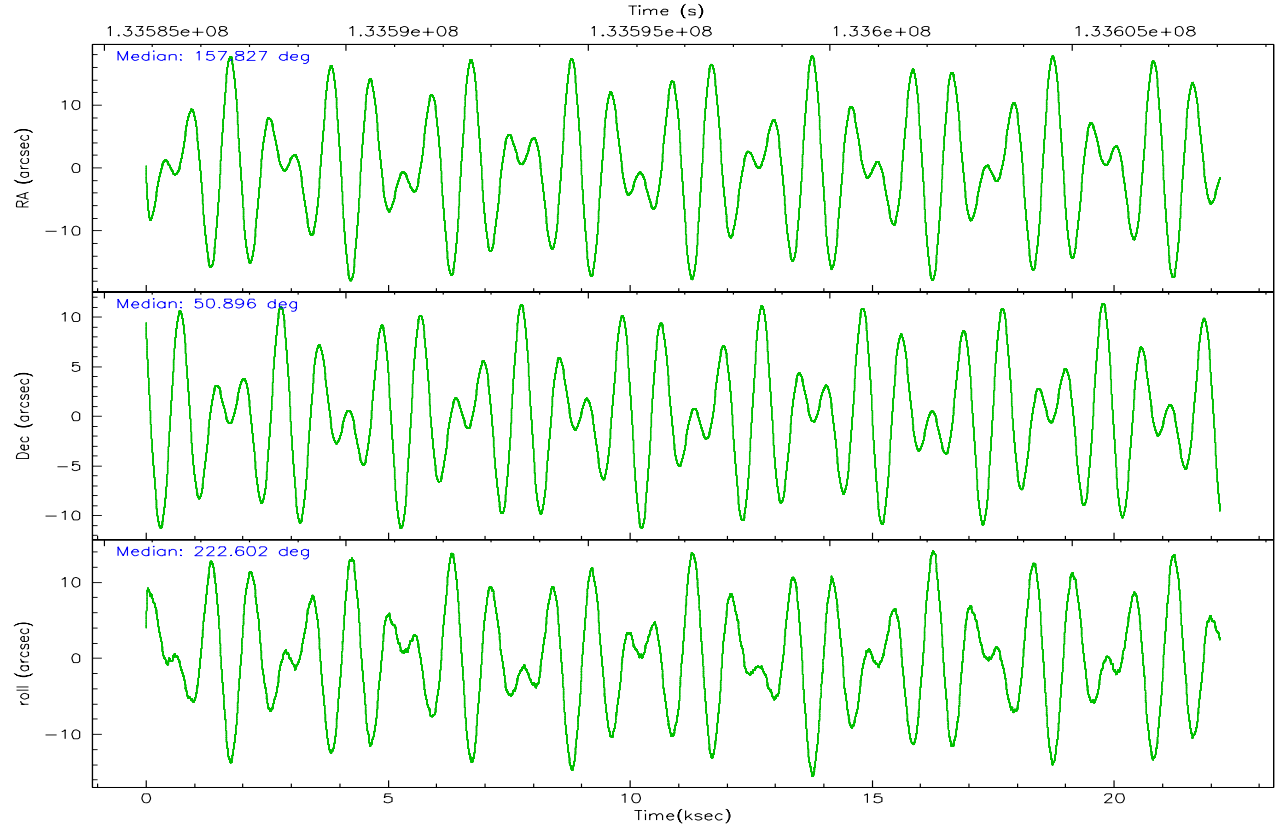
	ccd 4	ccd 5	ccd 6	ccd 7	ccd 8	ccd 9
grade 0 events	5317	11304	7858	4979	10105	11998
	4%	7%	7%	3%	7%	10%
grade 1 events	46	656	64	155	55	40
	0%	0%	0%	0%	0%	0%
grade 2 events	3040	20130	2866	14491	6032	3261
	2%	13%	2%	10%	4%	2%
grade 3 events	1273	2022	1386	3982	3109	1317
	1%	1%	1%	2%	2%	1%
grade 4 events	1244	1879	1357	3985	2782	1246
	1%	1%	1%	2%	2%	1%
grade 5 events	3835	7686	4353	10199	5566	4514
	3%	5%	4%	7%	4%	4%
grade 6 events	2262	36686	2466	32451	7412	2472
	1%	24%	2%	22%	5%	2%
grade 7 events	96214	72301	88411	71133	99431	85430
	84%	47%	81%	50%	73%	77%

2.2 Compared Parameters

Parameter	Planned	Actual	Parameter	Planned	Actual
Instrument	ACIS	ACIS	Obspar format version number	6	6
Detector	ACIS-456789	ACIS-456789	Obspar file type	PREDICTED	ACTUAL
Grating	HETG	HETG	Obspar update status	NONE	UPDATED
Data mode	FAINT	FAINT	On-chip summing requested	N	N
Observation mode	POINTING	POINTING	Subarray requested	CUSTOM	CUSTOM
Pointing RA	157.838954	157.8265394259499	Subarray start row	1	1
Pointing Dec	50.921656	50.89554742672046	Subarray row count	774	774
Pointing Roll	222.440463	222.6067317365212	Alternating exposures requested	N	N
SIM focus pos (mm)	-0.684267	-0.6828225247311905	Primary exposure time	0.000000	2.5
SIM defocus (mm)	0	0.001444936568705701			
SIM translation stage pos (mm)	-187.132523	-187.1254020033014			
SIM translation stage offset (mm)	-3	-3.007120579706367			
Observation start time	133586055.184000	133585336.12117			
Observation start date	2002-03-27T03:13:11	2002-03-27T03:02:16			
Observation end time	133608055.184000	133608837.32212			
Observation end date	2002-03-27T09:19:51	2002-03-27T09:33:57			
Read mode	TIMED	TIMED			

2.3 Aspect



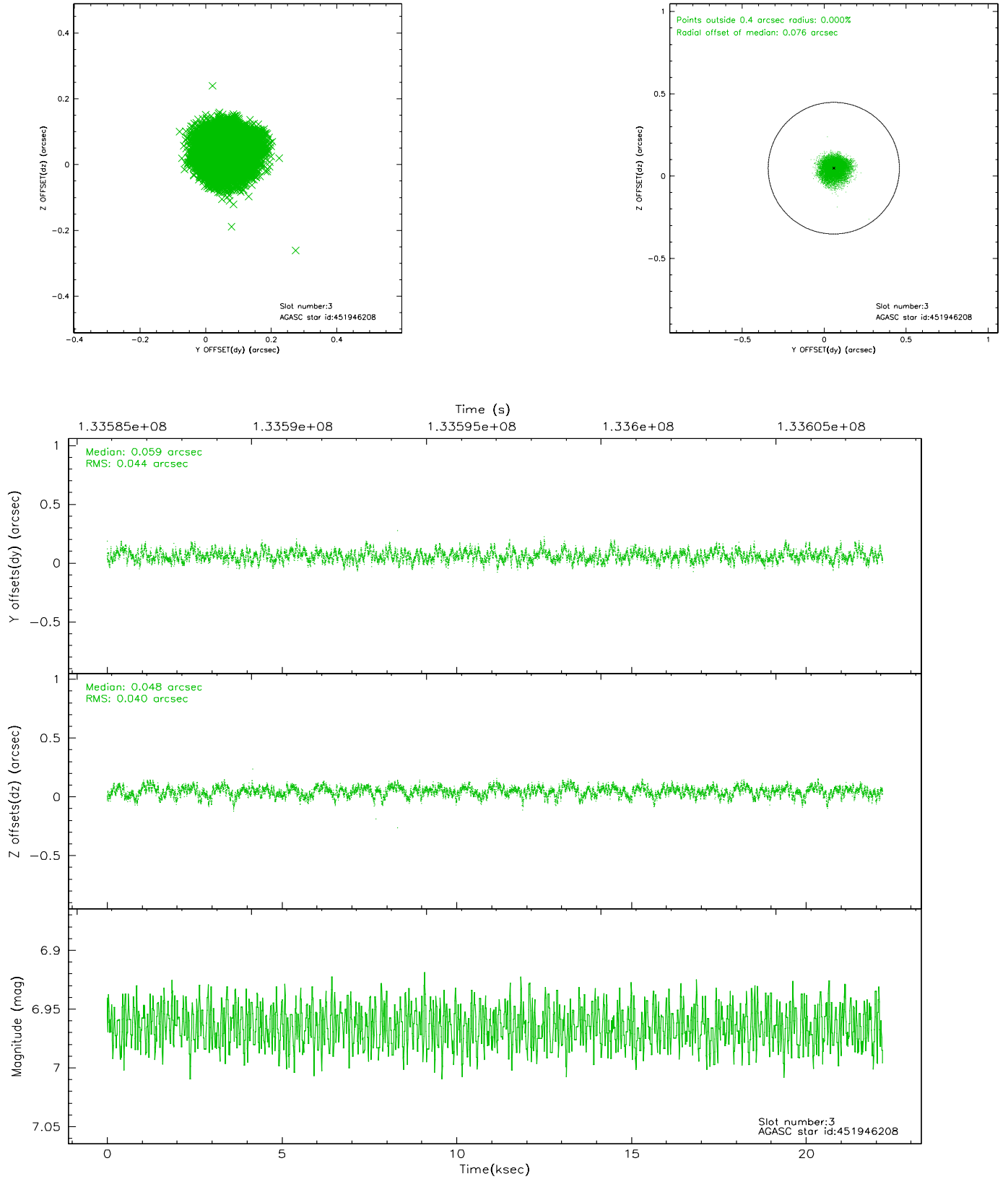


Slot Statistics

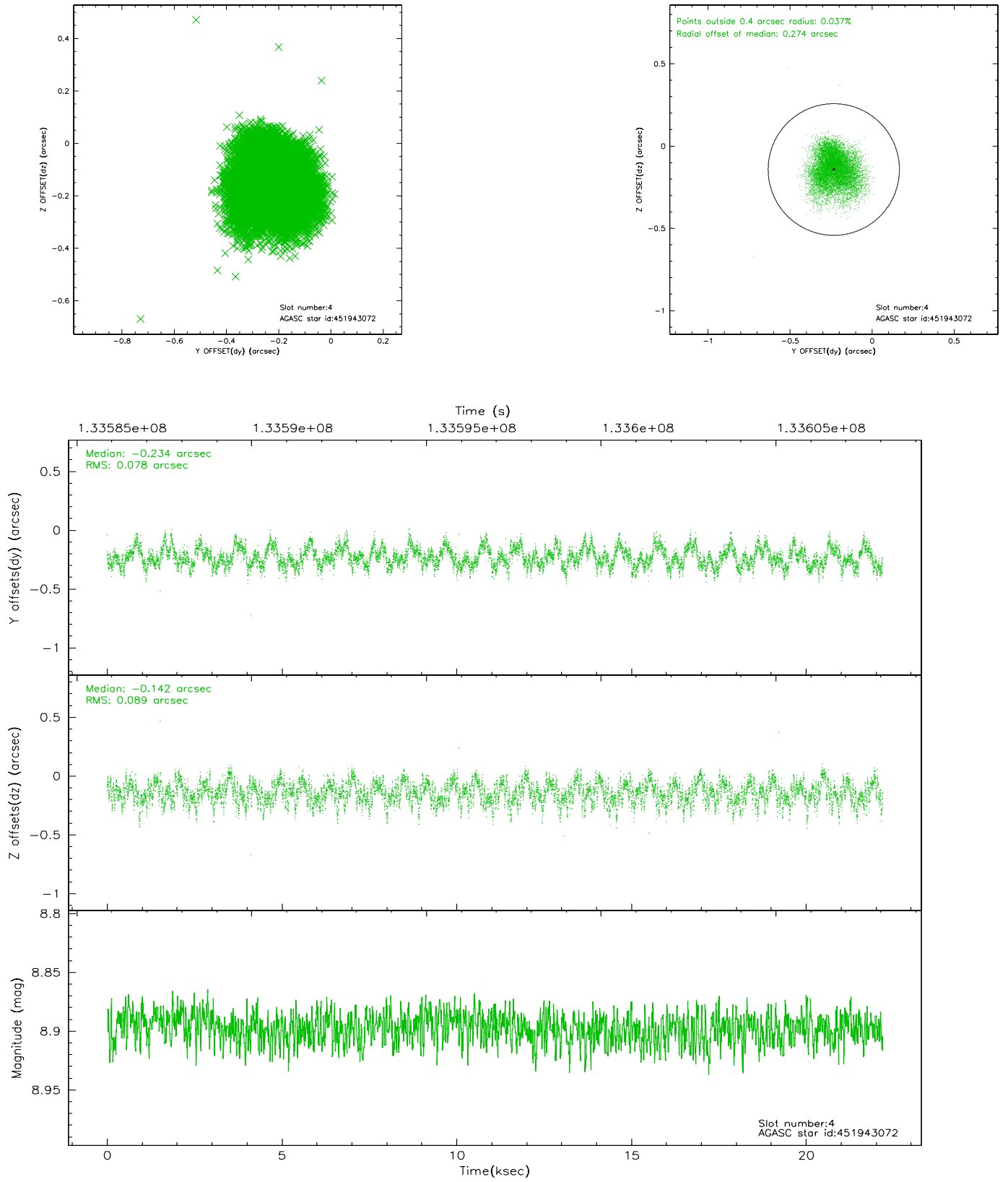
slot	status	id	mag	n_pts	med_dy	med_dz	dr1	dr2	ra	dec	mean_y	mean_z
0	FID	ACIS-S-3	7.35	5410	-0.083	0.006	0.008	0.013	0.000000	0.000000	57.17	-1918.99
1	FID	ACIS-S-4	7.20	5410	0.001	0.041	0.017	0.026	0.000000	0.000000	2157.44	118.37
2	FID	ACIS-S-5	7.24	5412	0.055	-0.037	0.017	0.025	0.000000	0.000000	-1808.51	112.20
3	GUIDE	451946208	6.96	10822	0.059	0.048	0.064	0.102	157.563600	50.569125	1321.05	510.97
4	GUIDE	451943072	8.90	10819	-0.234	-0.142	0.127	0.200	157.774577	51.808956	-2049.15	-2454.42
5	GUIDE	451944768	9.19	10816	0.003	-0.089	0.091	0.145	157.673498	51.401166	-890.21	-1525.42
6	GUIDE	451029568	9.42	10818	0.136	0.051	0.104	0.170	156.626708	51.050272	1697.93	-2209.61
7	GUIDE	451944336	9.53	10811	0.030	0.136	0.084	0.138	158.260486	51.372141	-1794.35	-559.79

2.4 Star Slots

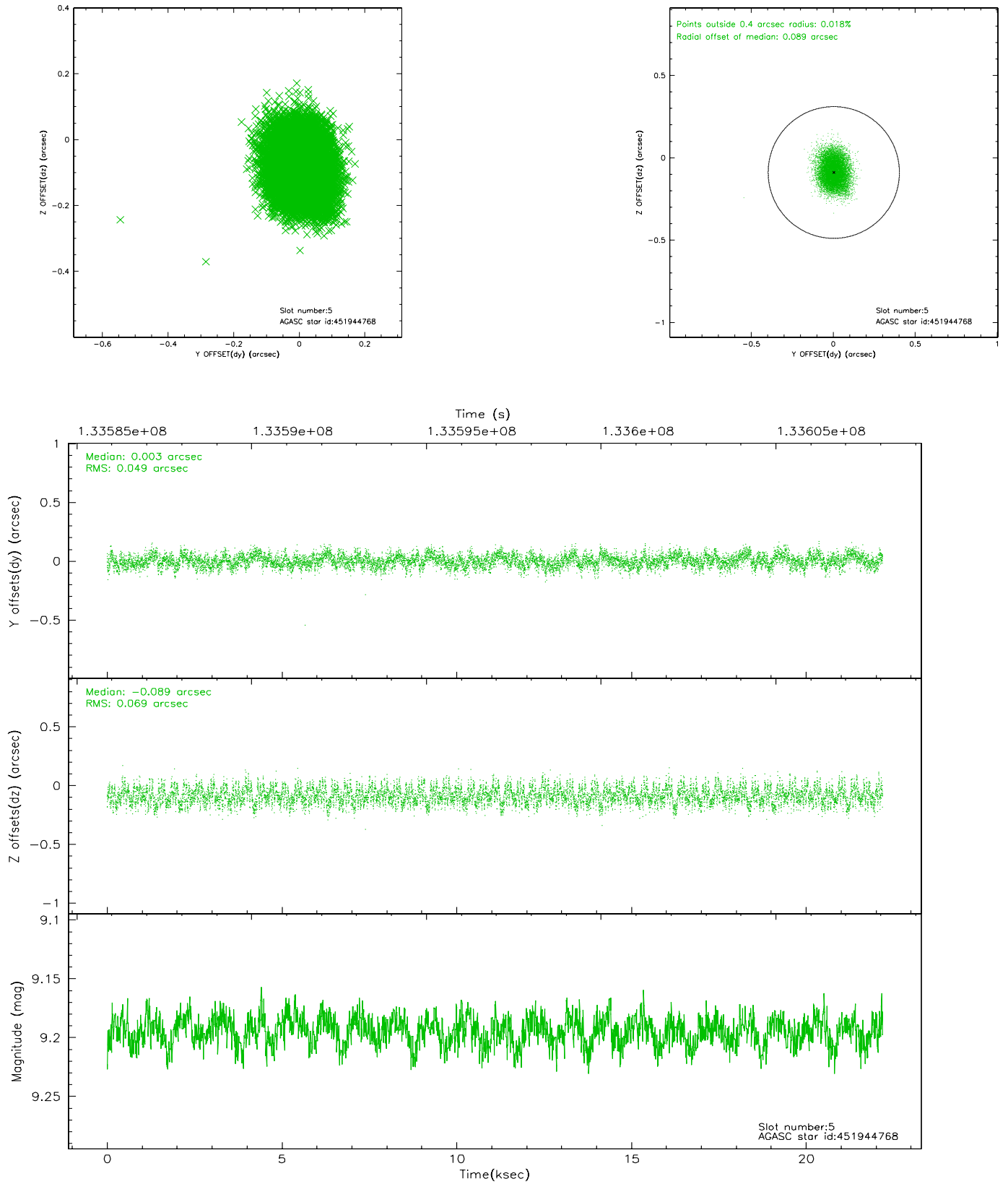
2.4.1 Slot 3



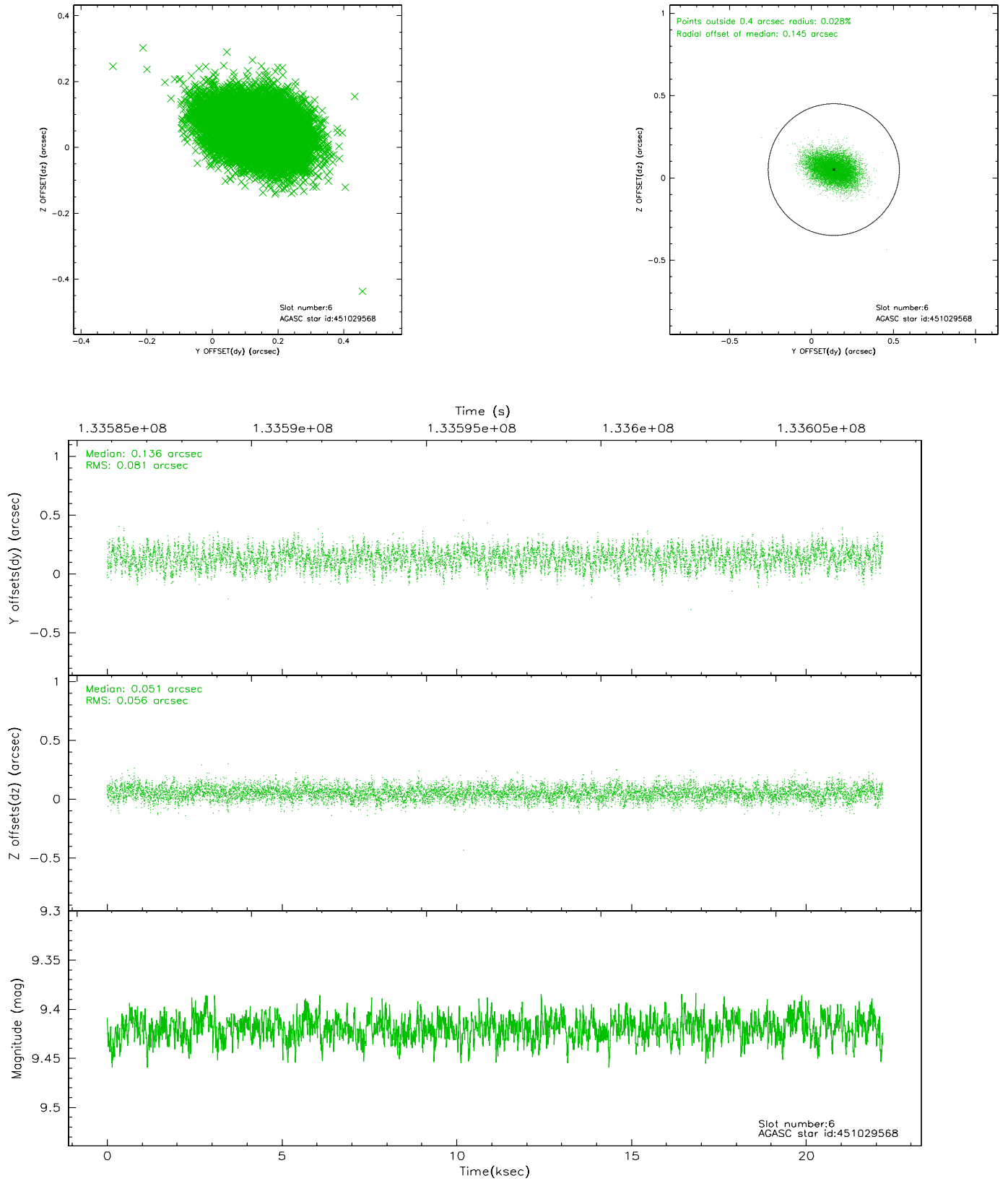
2.4.2 Slot 4



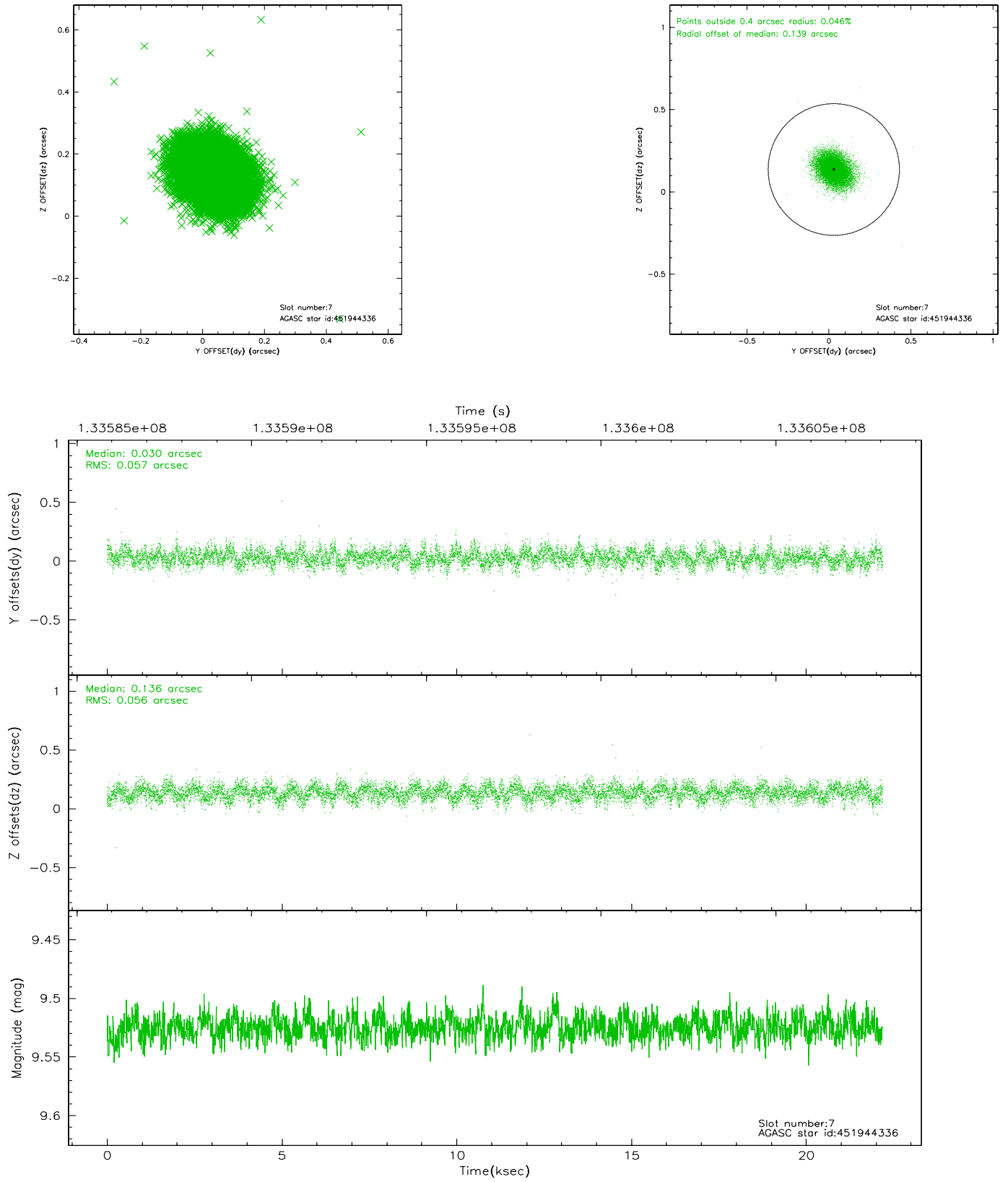
2.4.3 Slot 5



2.4.4 Slot 6

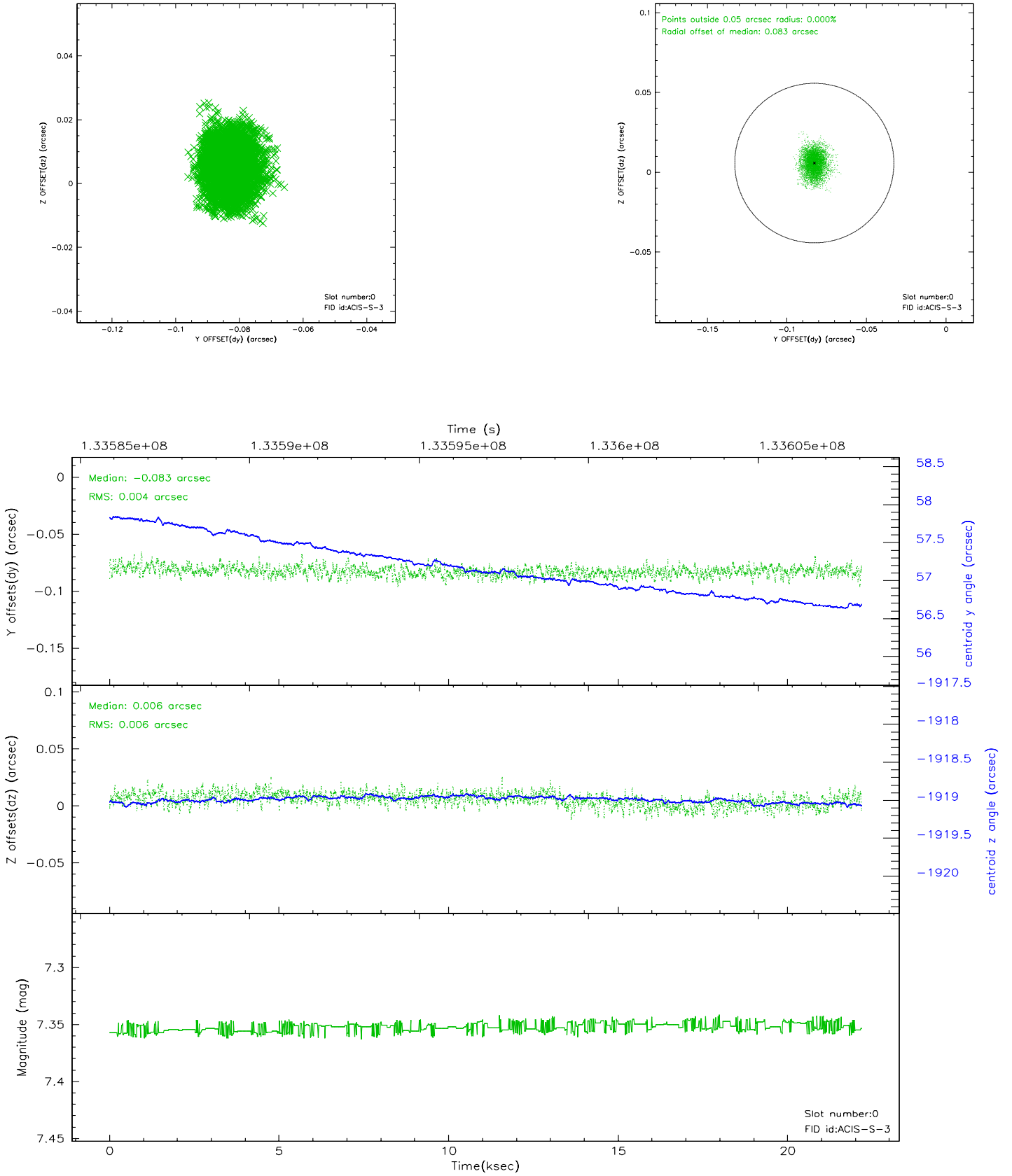


2.4.5 Slot 7

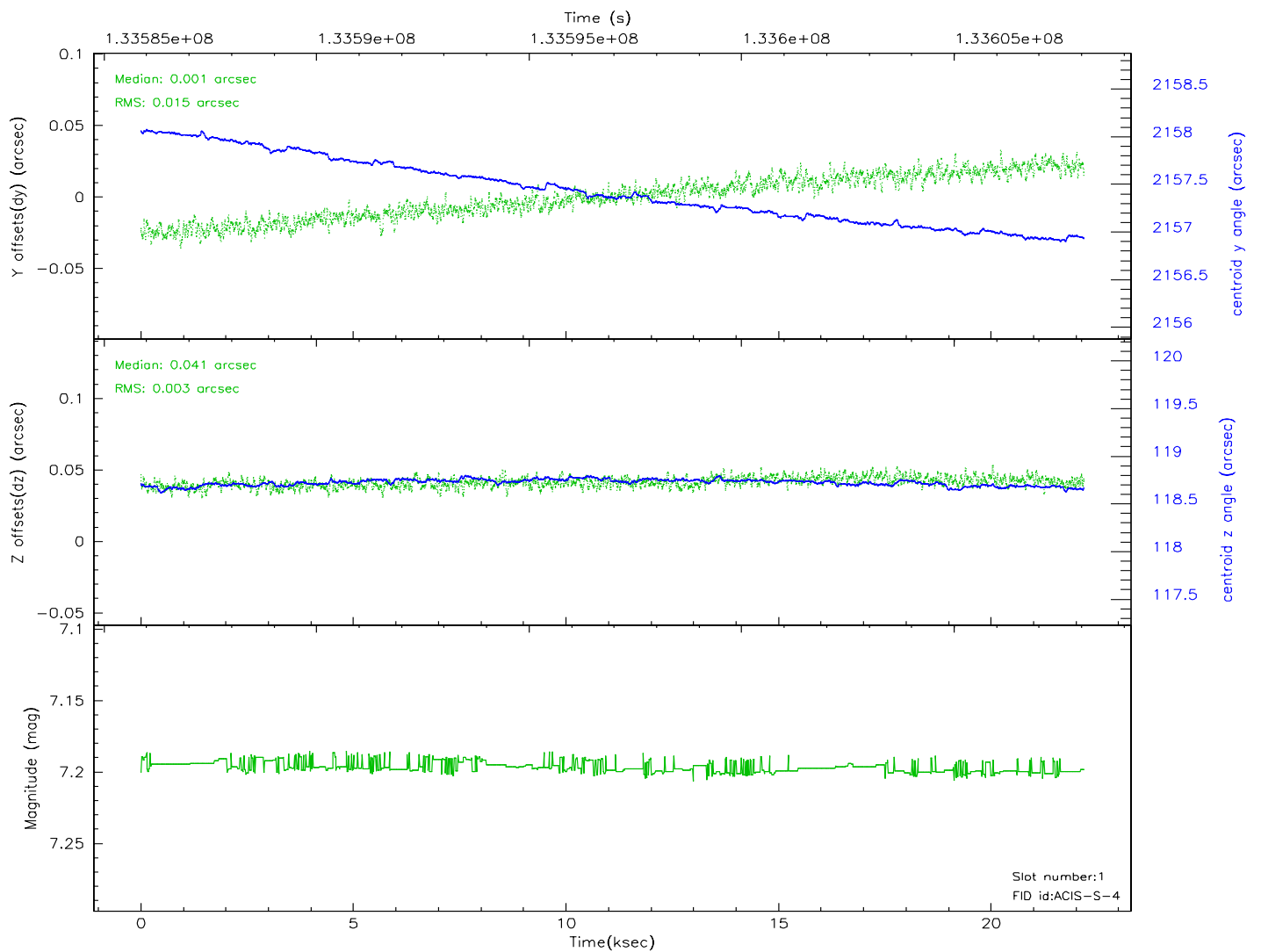
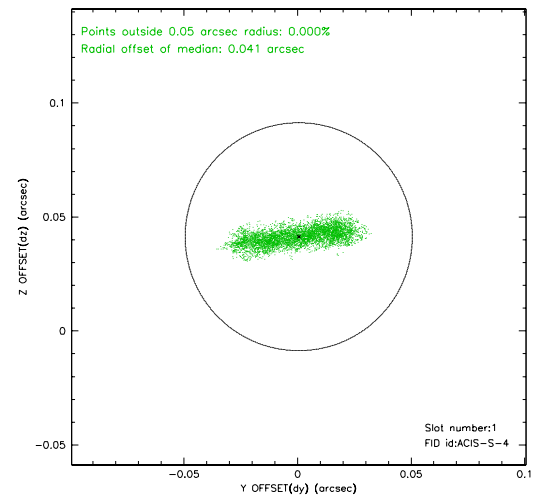
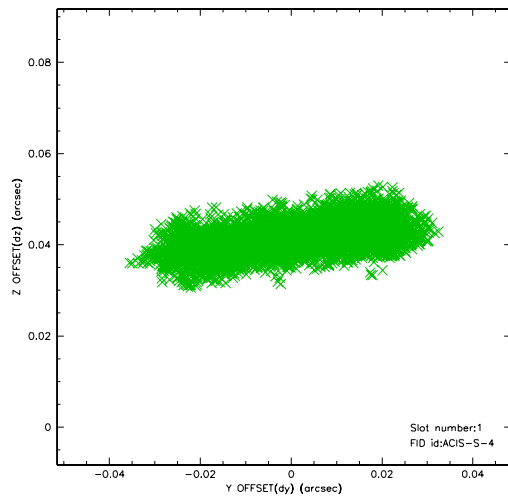


2.5 FID Slots

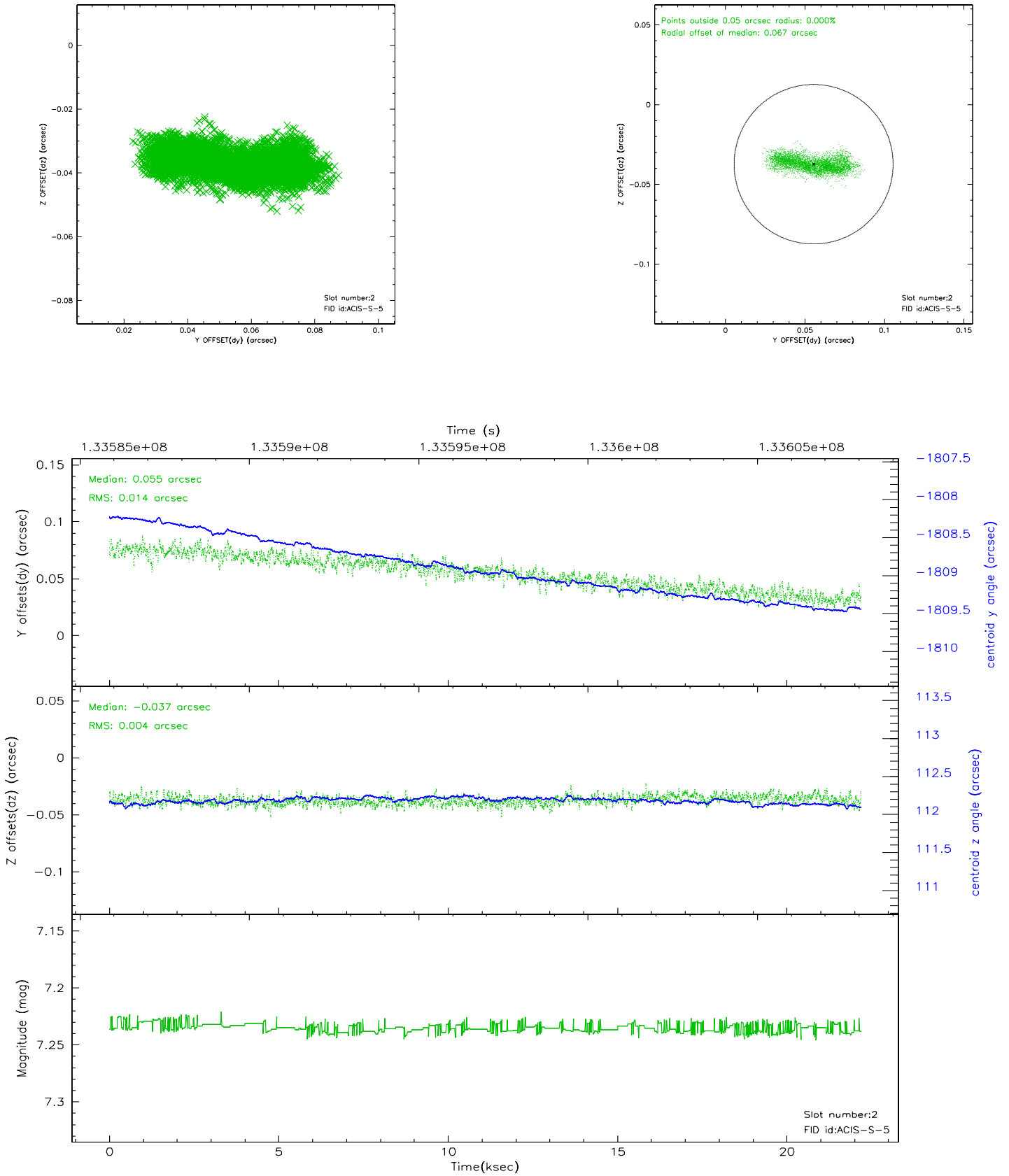
2.5.1 Slot 0



2.5.2 Slot 1

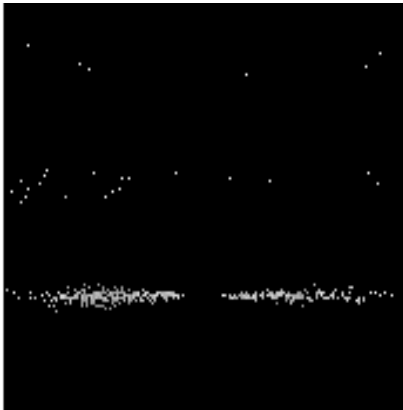


2.5.3 Slot 2

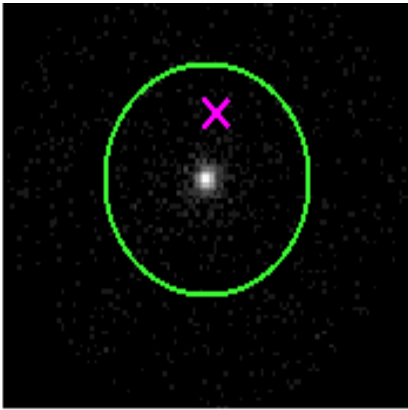


3 Gratings

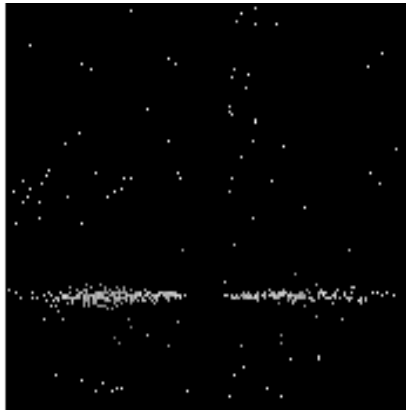
3.1 HEG Arm



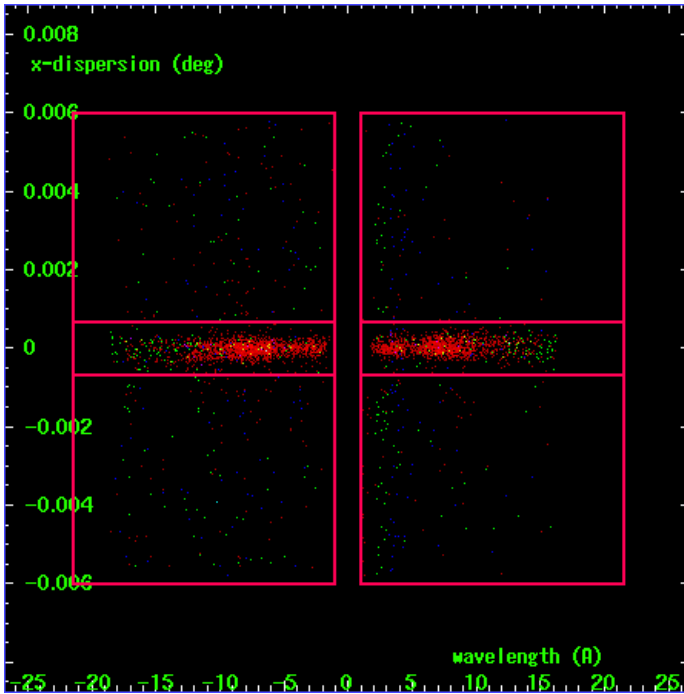
HEG Order Sort 123



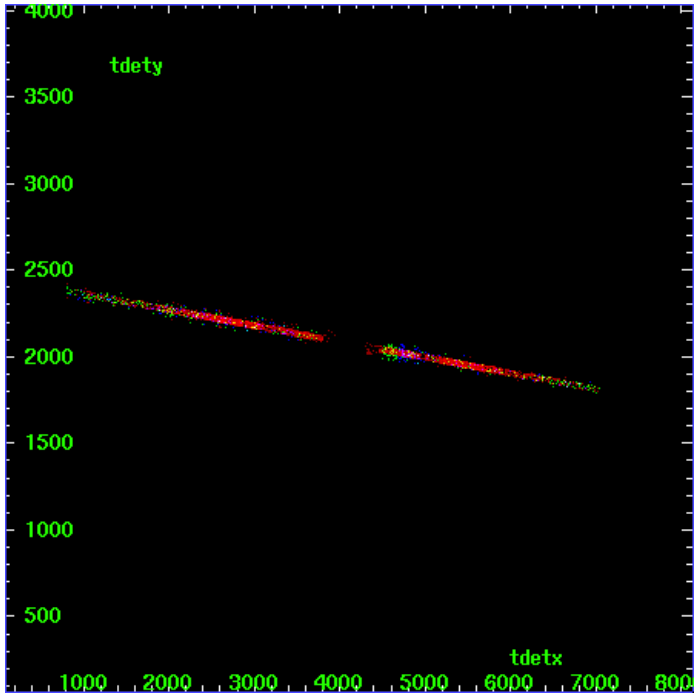
HEG Zero Order



HEG Order Sort ALL

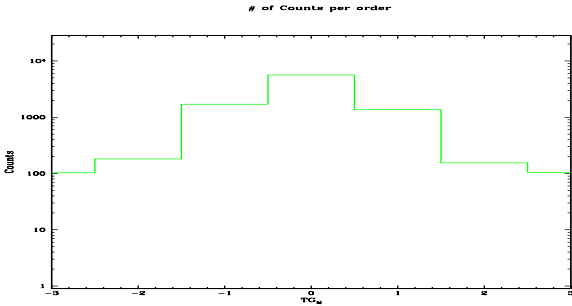


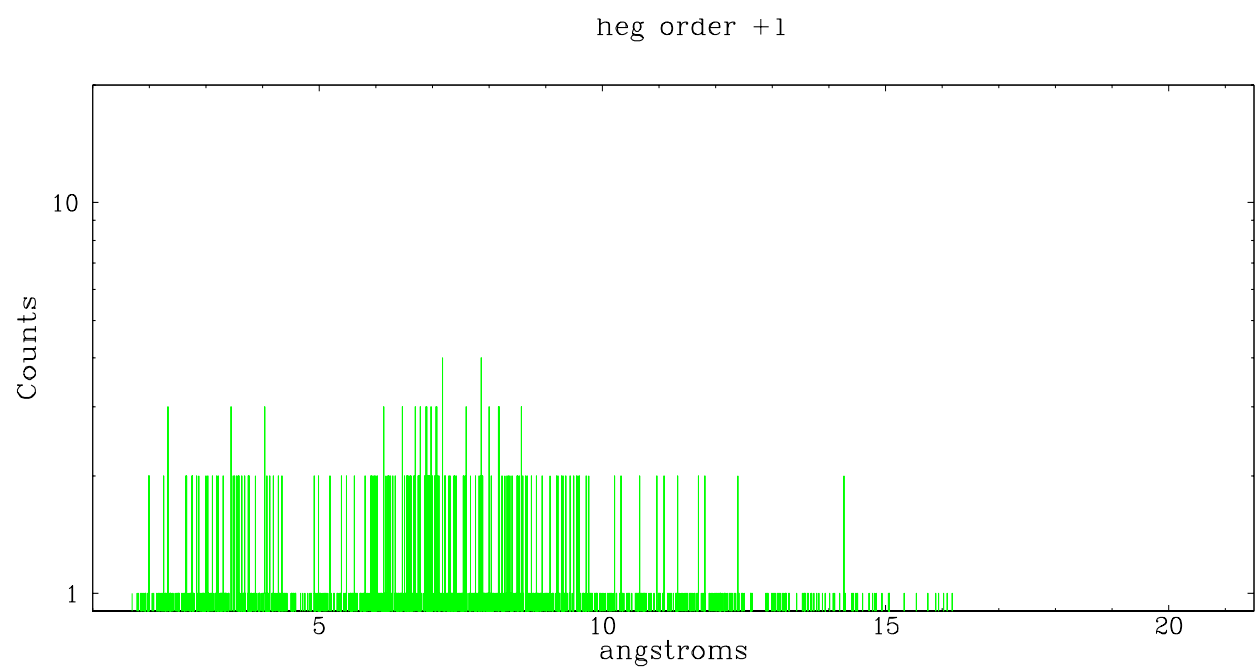
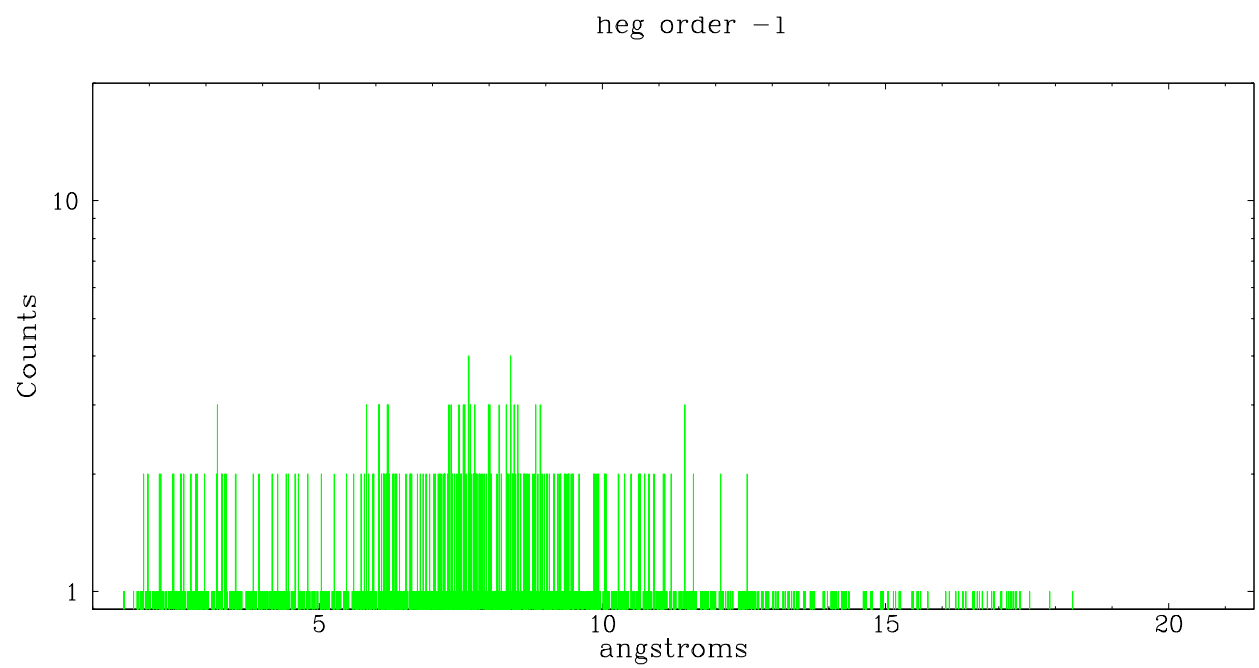
Spot Image HEG



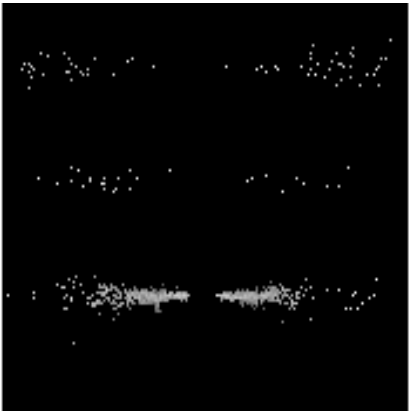
Full Detector HEG

	order -3	order -2	order -1	order 0	order 1	order 2	order 3
Events	103	181	1706	5640	1369	155	105

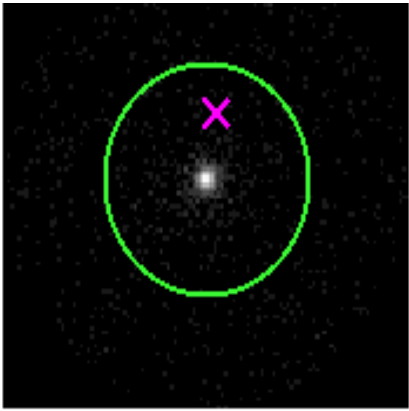




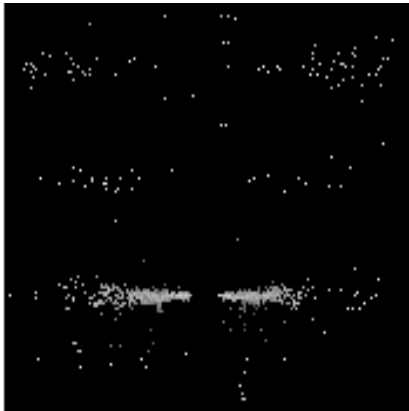
3.2 MEG Arm



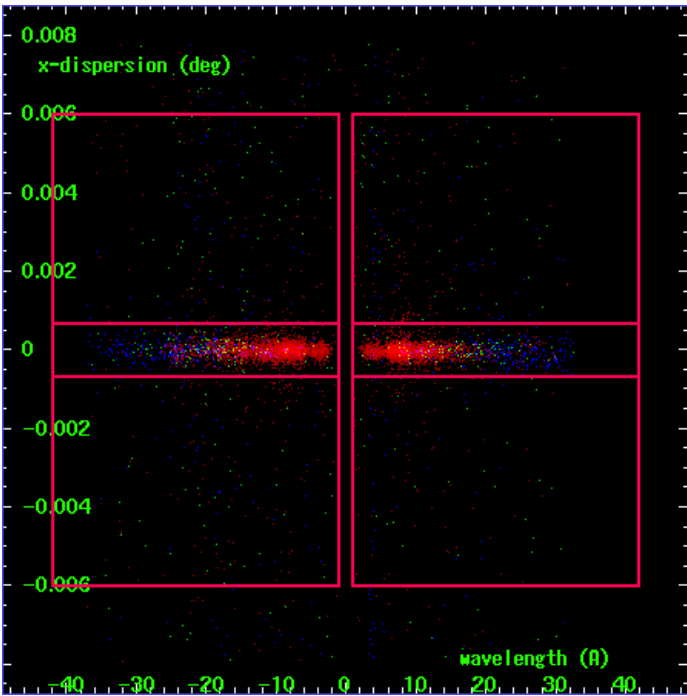
MEG Order Sort 123



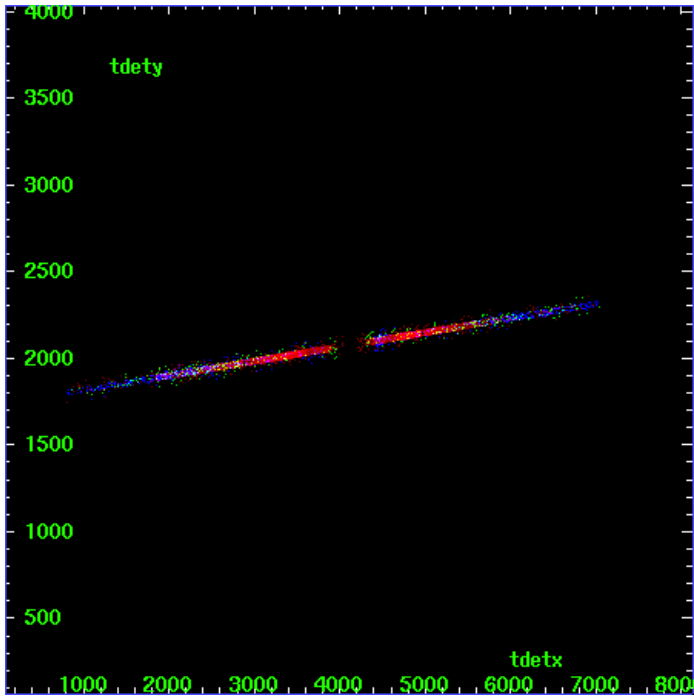
MEG Zero Order



MEG Order Sort ALL

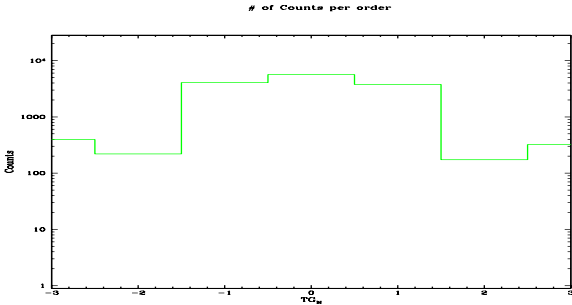


Spot Image MEG

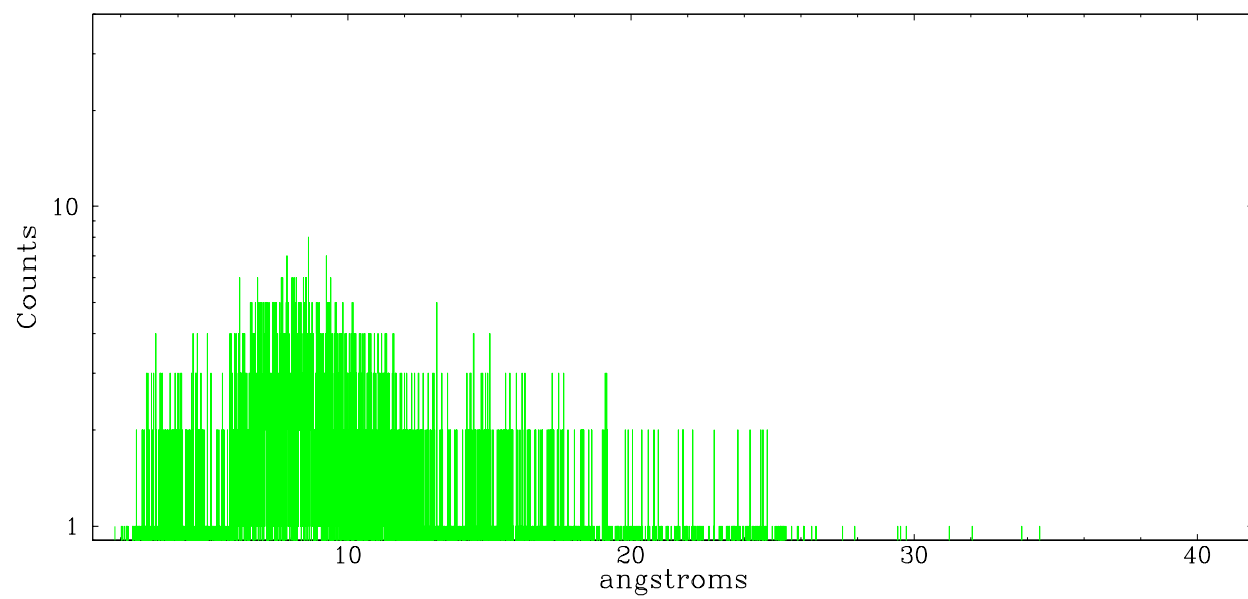


Full Detector MEG

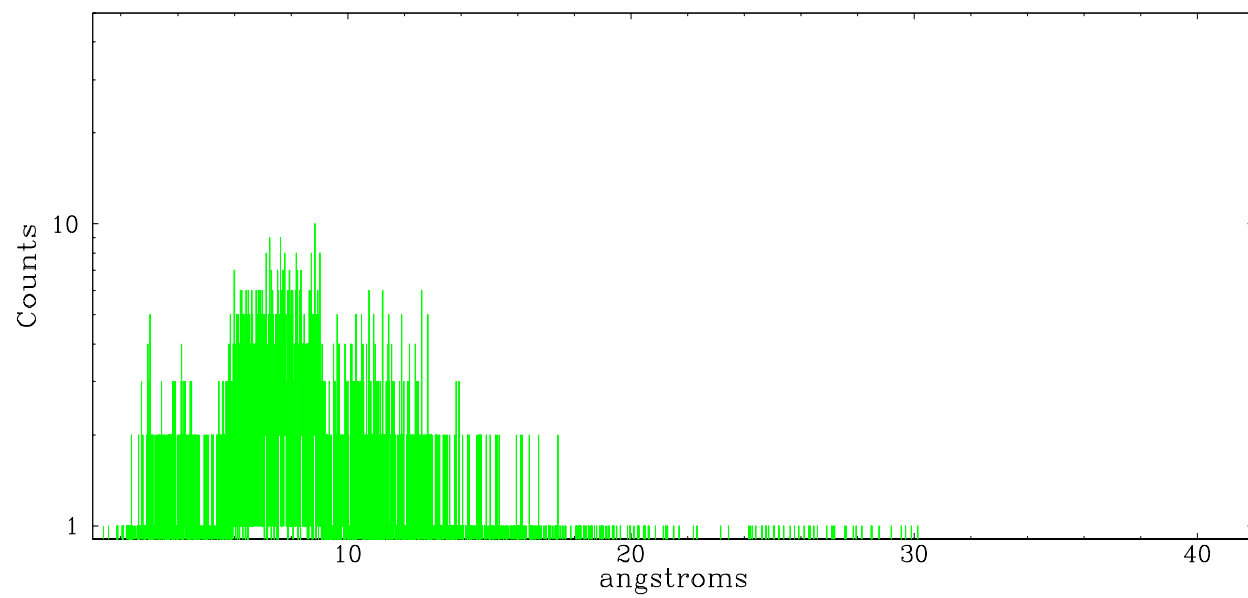
	order -3	order -2	order -1	order 0	order 1	order 2	order 3
Events	395	220	4081	5640	3776	174	321



meg order -1



meg order +1



A Summary

A.1 Status

V&V Scientist	Beth Sundheim
V&V Date (YYYY-MM-DD)	2006.09.08
V&V Edition	1
V&V Disposition and Status	OK
V&V Charge Time	21.76

A.2 Comments