

V&V Reference Report

L2 ASCDS Version : 7.6.9

Observation 2850 - L2 Version 001
Chandra X-Ray Center

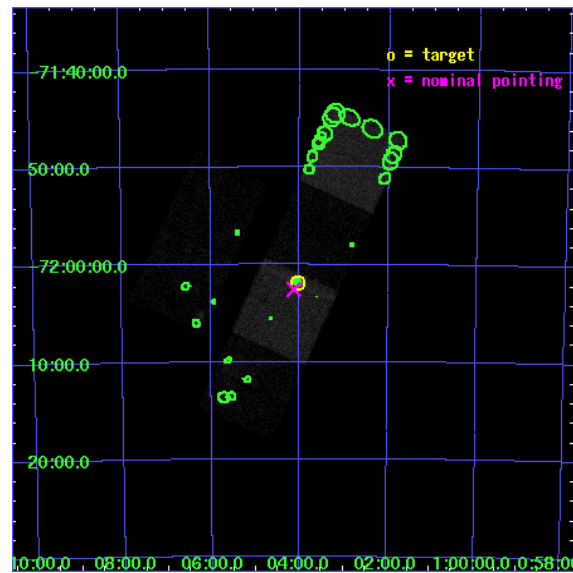
L2 Processing Date : Sep 19 2006

Contents

1	Front	2
2	OBI	3
2.1	OBI	3
2.1.1	Images	3
2.1.2	Bias	3
2.1.3	Parameters	4
2.1.4	Events	4
2.2	Compared Parameters	5
2.3	Aspect	6
2.4	Star Slots	9
2.4.1	Slot 3	9
2.4.2	Slot 4	10
2.4.3	Slot 5	11
2.4.4	Slot 6	12
2.4.5	Slot 7	13
2.5	FID Slots	14
2.5.1	Slot 0	14
2.5.2	Slot 1	15
2.5.3	Slot 2	16
3	Point Sources	17
A	Summary	18
A.1	Status	18
A.2	Comments	18

1 Front

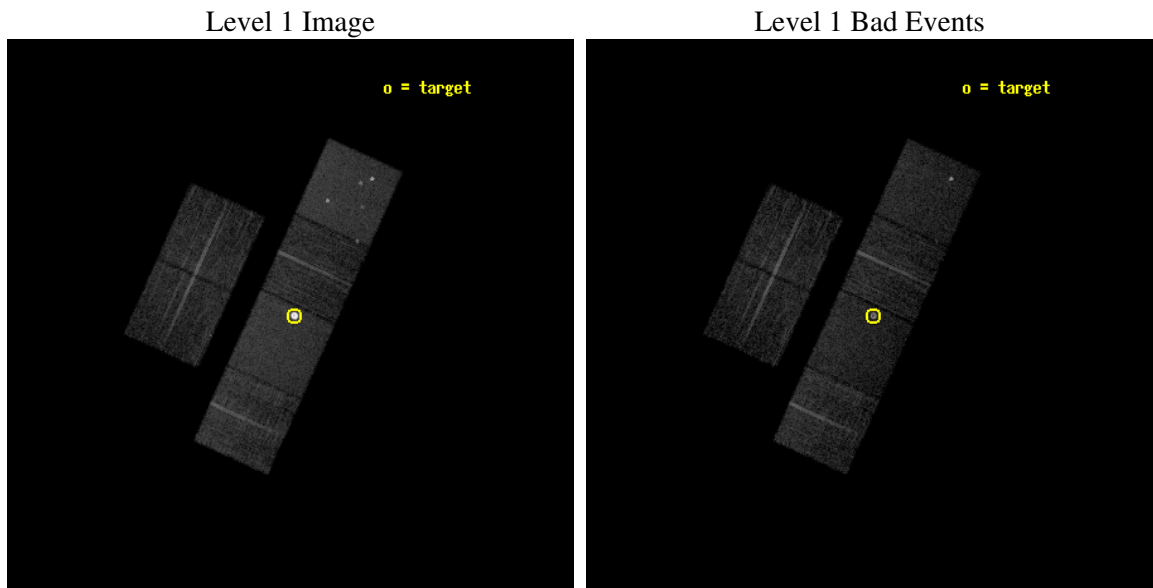
seq_num	590239
obs_id	2850
title	AO3B ACIS-S CALIBRATION OBSERVATIONS OF E0102-72
observer	Dr. CXC Calibration
object	E0102-72.3 [Chip S3, T=120, Offsets=1,0,0]
dtcycle	0
cycle	P
ra_targ	16.01
dec_targ	-72.032028
ra_nom	16.031676918881
dec_nom	-72.042862736828
roll_nom	114.35039693056
revision	2
ontime	7859.1999707222
livetime	7759.6820484508
ontime2	7859.1999707222
ontime3	7859.1999707222
ontime5	7859.1999707222
ontime6	7859.1999707222
ontime7	7859.1999707222
ontime8	7859.1999707222
l2events	136270



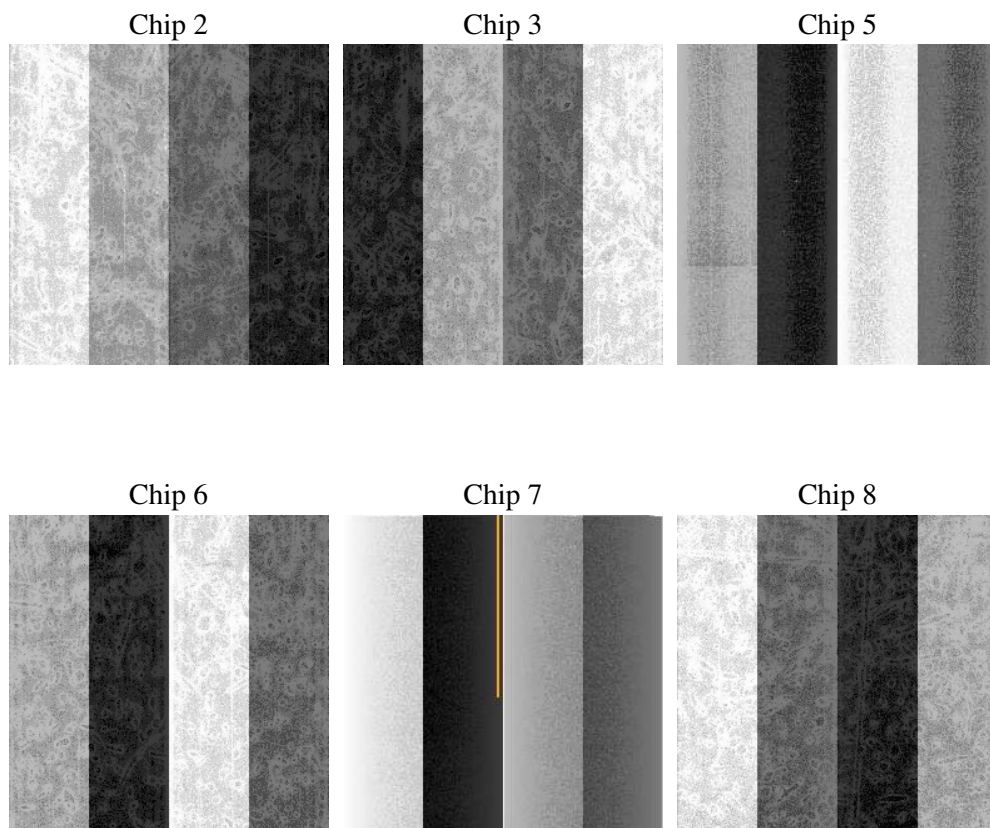
2 OBI

2.1 OBI

2.1.1 Images



2.1.2 Bias



2.1.3 Parameters

obi_num	0
ascdsver	7.6.9
caldsver	3.2.3
date	2006-09-19T18:50:51
revision	2

sched_exp_time	7900.000000
ontime	7865.9092922211
ontime2	7865.9092922211
ontime3	7865.9092922211
ontime5	7865.9092922211
ontime6	7865.9092922211
ontime7	7865.9092922211
ontime8	7865.9092922211
l1events	416971

2.1.4 Events

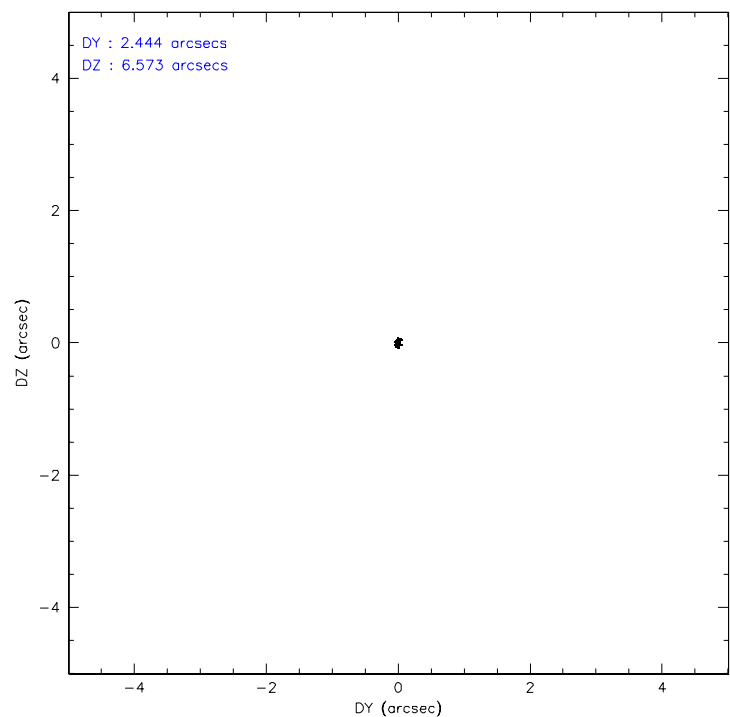
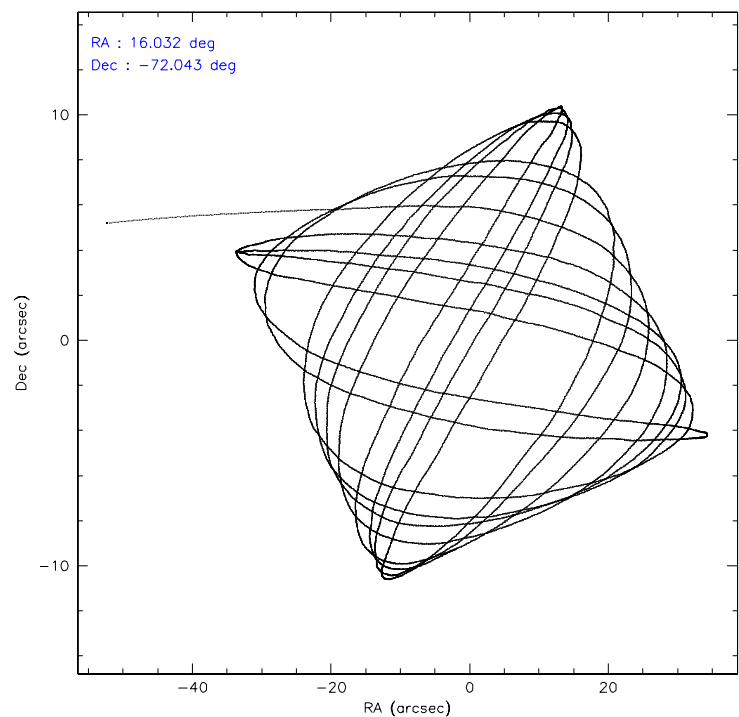
	ccd 2	ccd 3	ccd 5	ccd 6	ccd 7	ccd 8
level 1 events	52205	47308	75082	51697	127215	63464
rejected events	46424	41249	41463	45586	41955	50564
rejected %	88%	87%	55%	88%	32%	79%

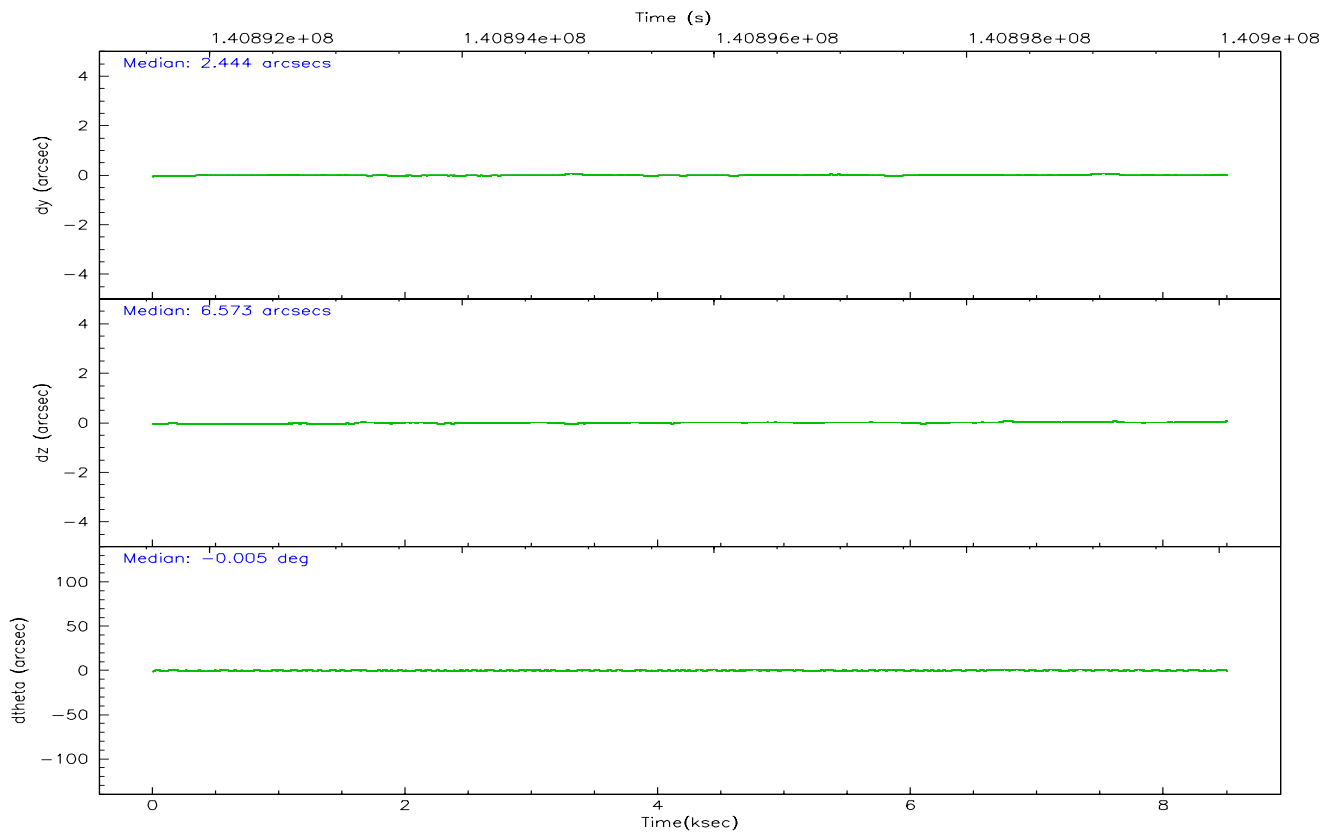
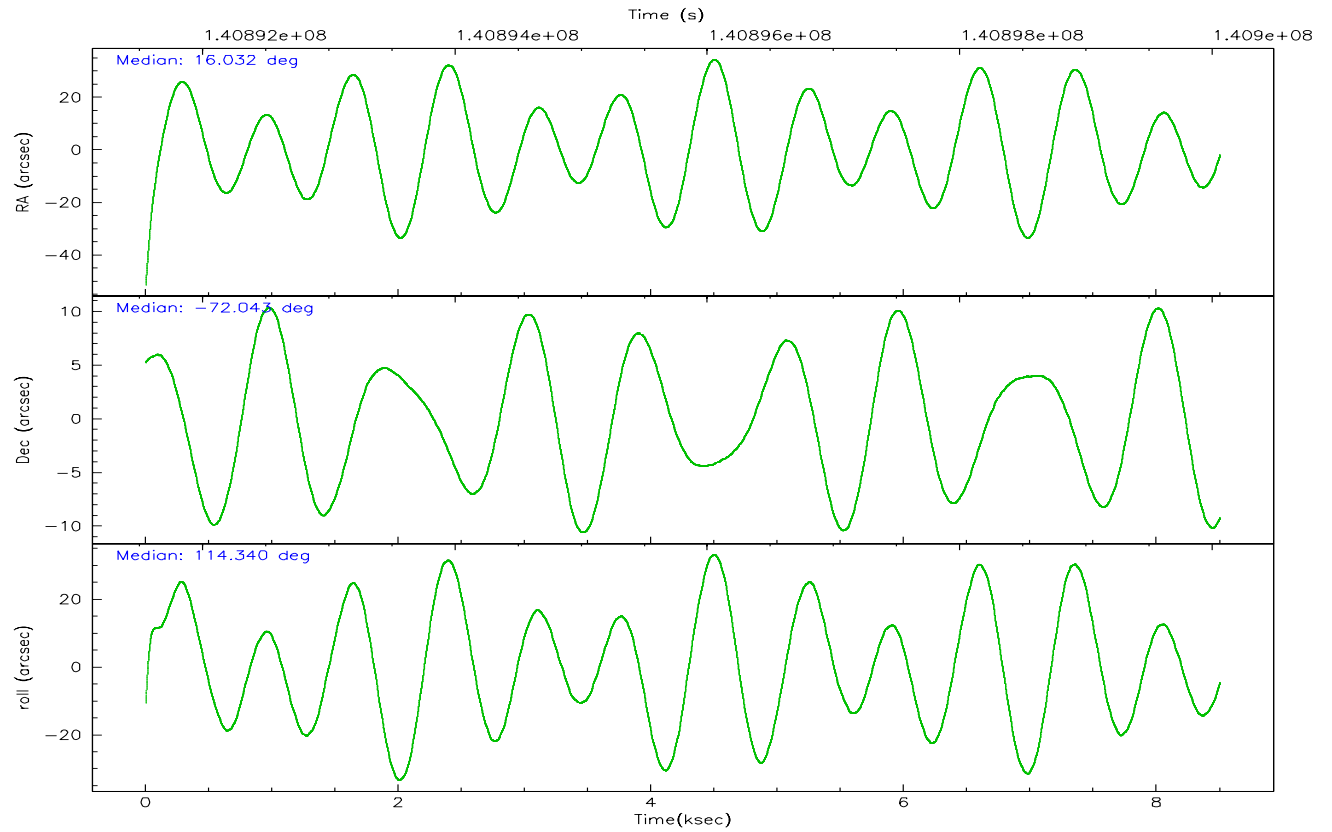
	ccd 2	ccd 3	ccd 5	ccd 6	ccd 7	ccd 8
grade 0 events	2376	2844	3856	2555	18976	4526
	4%	6%	5%	4%	14%	7%
grade 1 events	21	25	106	20	395	33
	0%	0%	0%	0%	0%	0%
grade 2 events	1306	1178	10320	1197	24123	2593
	2%	2%	13%	2%	18%	4%
grade 3 events	508	527	738	573	8342	1357
	0%	1%	0%	1%	6%	2%
grade 4 events	550	547	731	615	8543	1286
	1%	1%	0%	1%	6%	2%
grade 5 events	1853	1977	3458	2258	5423	2702
	3%	4%	4%	4%	4%	4%
grade 6 events	1043	966	18003	1174	25354	3155
	1%	2%	23%	2%	19%	4%
grade 7 events	44548	39244	37870	43305	36059	47812
	85%	82%	50%	83%	28%	75%

2.2 Compared Parameters

Parameter	Planned	Actual	Parameter	Planned	Actual
Instrument	ACIS	ACIS	Obspar format version number	6	6
Detector	ACIS-235678	ACIS-235678	Obspar file type	PREDICTED	ACTUAL
Grating	NONE	NONE	Obspar update status	NONE	UPDATED
Data mode	FAINT	FAINT	Number of optional ACIS chips dropped	0	0
Observation mode	POINTING	POINTING	On-chip summing requested	N	N
Pointing RA	16.104264	16.03167691888102	Subarray requested	NONE	NONE
Pointing Dec	-72.058444	-72.04286273682834	Alternating exposures requested	N	N
Pointing Roll	114.262767	114.3503969305625	Primary exposure time	0.000000	3.2
Window start time	139276864.184000	139276864.184000			
Window stop time	141782464.184000	141782464.184000			
SIM focus pos (mm)	-0.684267	-0.6828225247311905			
SIM defocus (mm)	0	0.001444936568705701			
SIM translation stage pos (mm)	-190.132523	-190.1400660498719			
SIM translation stage offset (mm)	0	0.00754346686406393			
Observation start time	140892158.184000	140890991.1189			
Observation start date	2002-06-19T16:41:34	2002-06-19T16:23:11			
Observation end time	140900058.184000	140900192.54428			
Observation end date	2002-06-19T18:53:14	2002-06-19T18:56:32			
Read mode	TIMED	TIMED			

2.3 Aspect



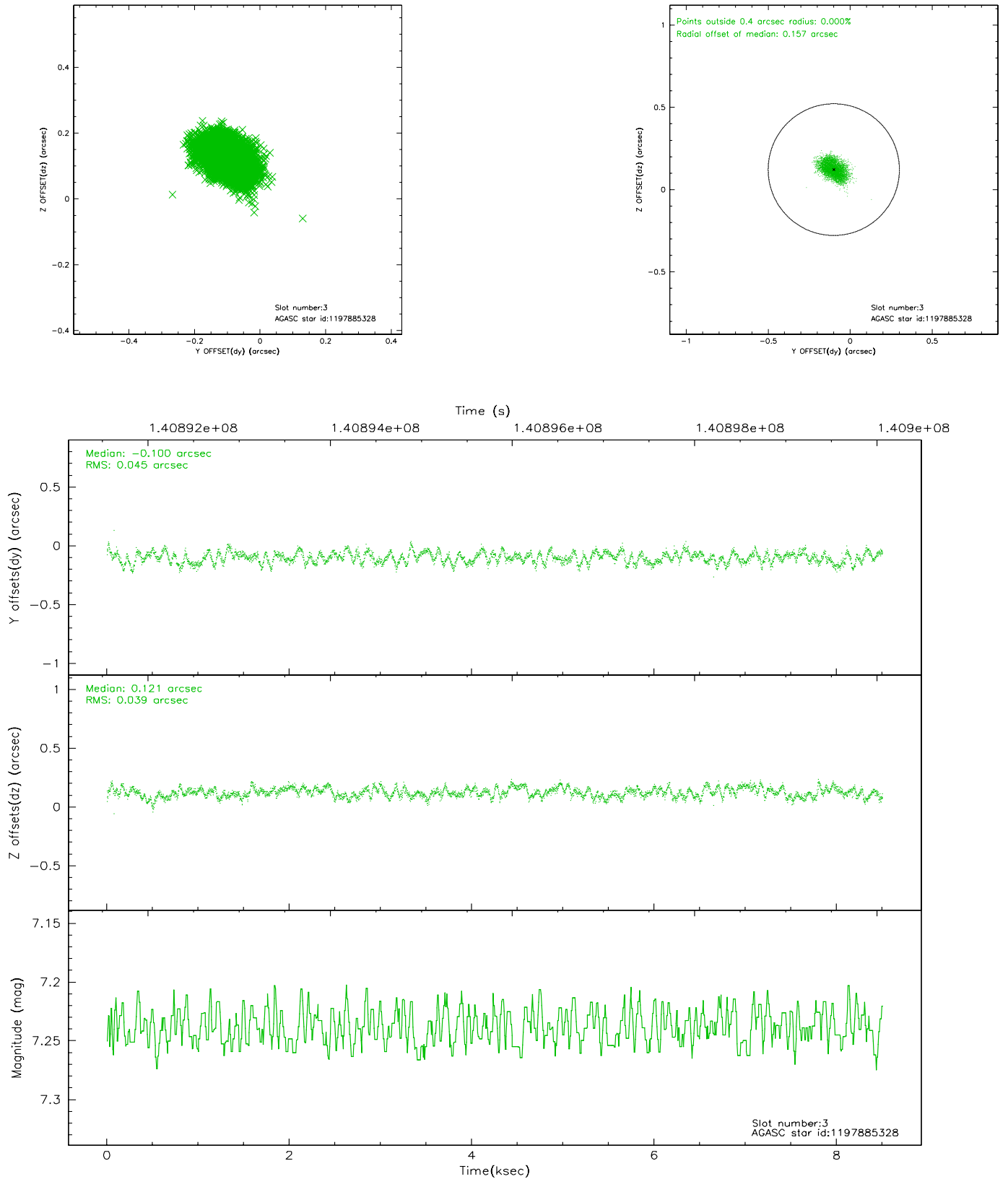


Slot Statistics

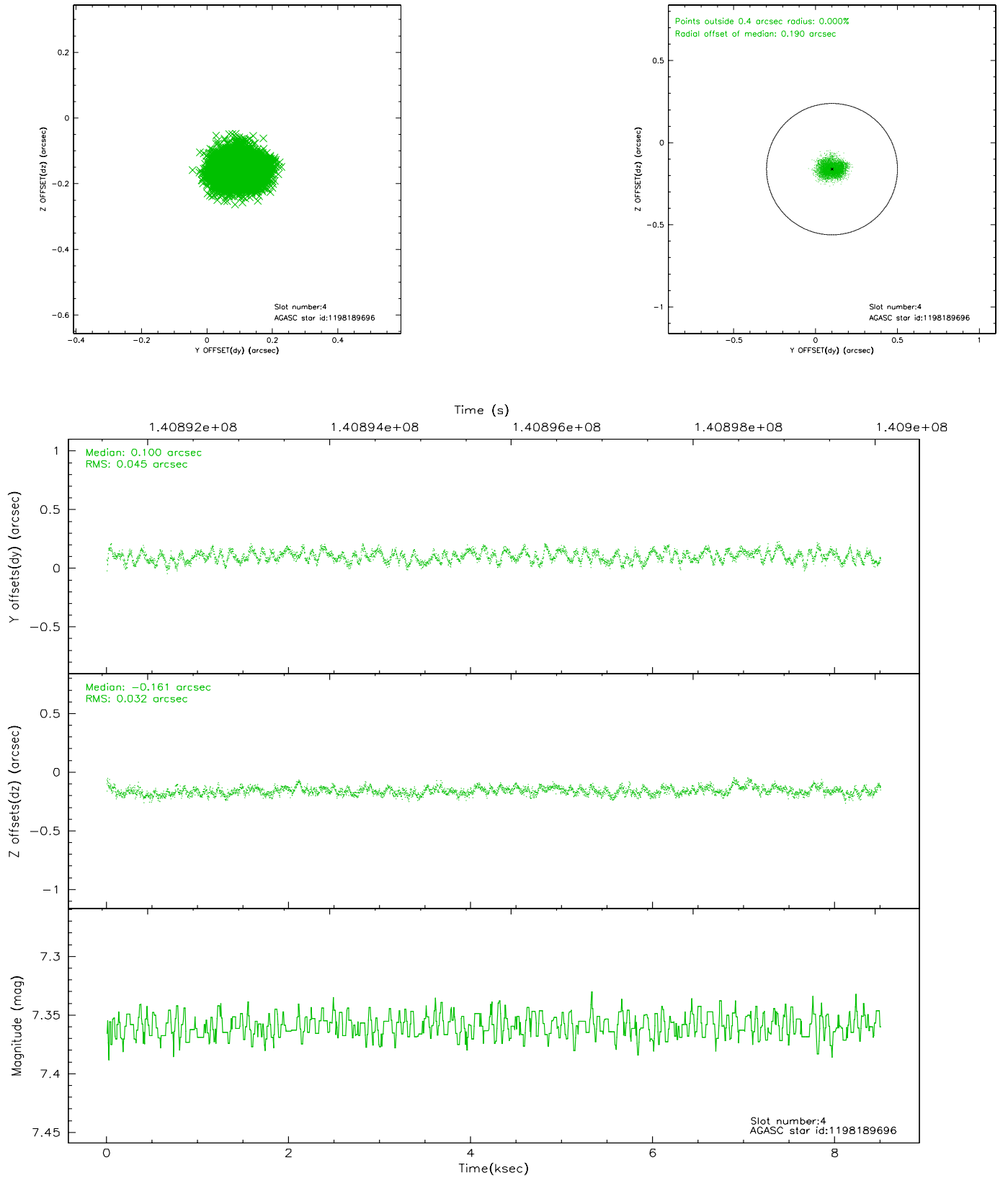
slot	status	id	mag	n_pts	med_dy	med_dz	dr1	dr2	ra	dec	mean_y	mean_z
0	FID	ACIS-S-1	7.18	2073	-0.005	-0.015	0.006	0.010	0.000000	0.000000	940.96	-1723.37
1	FID	ACIS-S-5	7.25	2073	0.033	0.013	0.006	0.010	0.000000	0.000000	-1807.63	173.55
2	FID	ACIS-S-6	7.35	2074	-0.049	0.014	0.007	0.011	0.000000	0.000000	405.78	818.24
3	GUIDE	1197885328	7.24	4147	-0.100	0.121	0.065	0.101	16.283090	-71.733943	982.30	-663.93
4	GUIDE	1198189696	7.36	4147	0.100	-0.161	0.060	0.092	15.223750	-72.697522	-1716.00	1807.02
5	GUIDE	1197884536	8.49	4147	-0.014	0.064	0.066	0.110	17.160729	-71.835289	236.01	-1406.27
6	GUIDE	1197878768	9.62	4145	-0.022	0.036	0.115	0.191	16.656786	-71.304581	2210.45	-1695.40
7	GUIDE	1197749416	10.26	4142	0.034	-0.060	0.149	0.242	13.610513	-71.871242	1709.93	2292.36

2.4 Star Slots

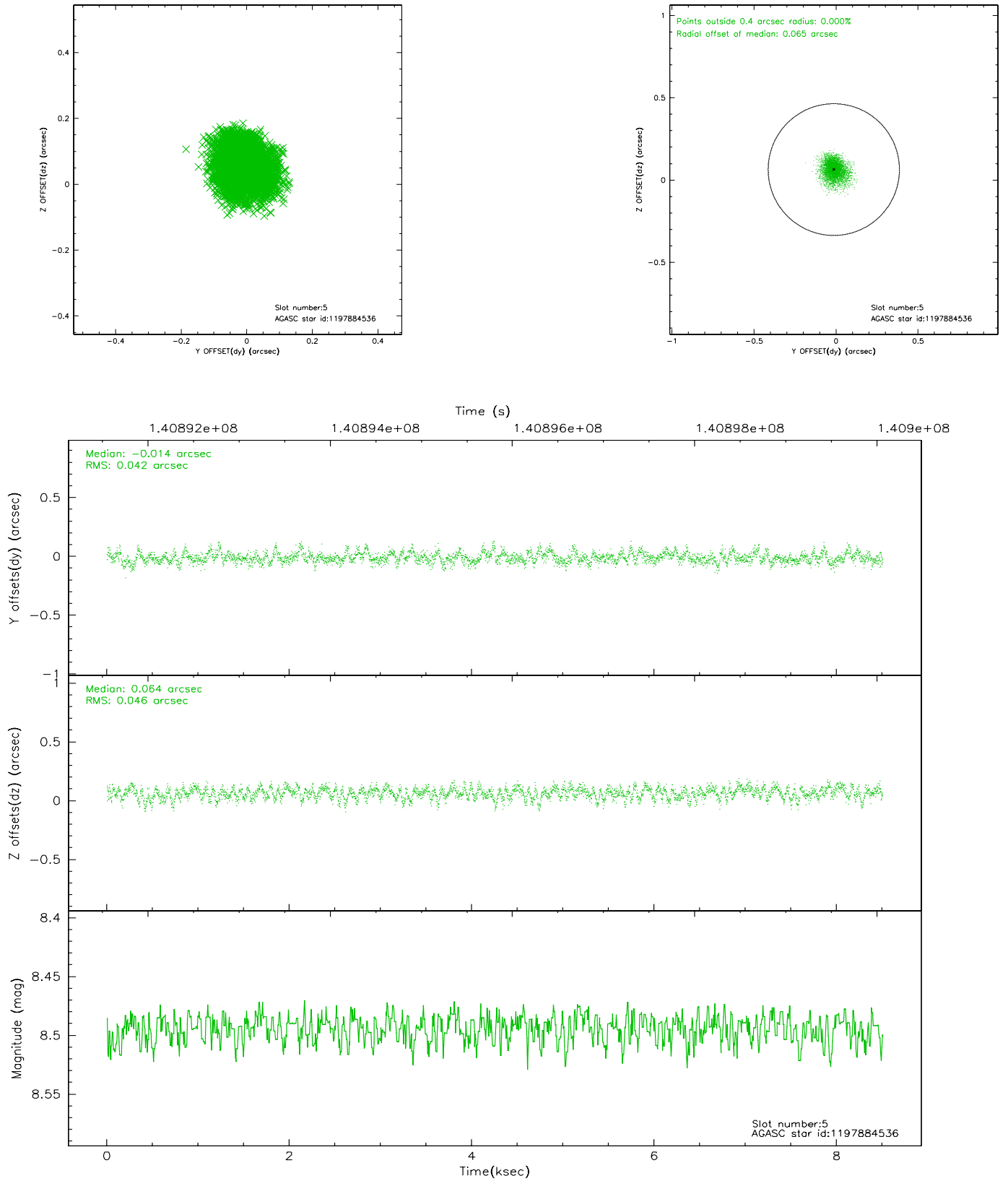
2.4.1 Slot 3



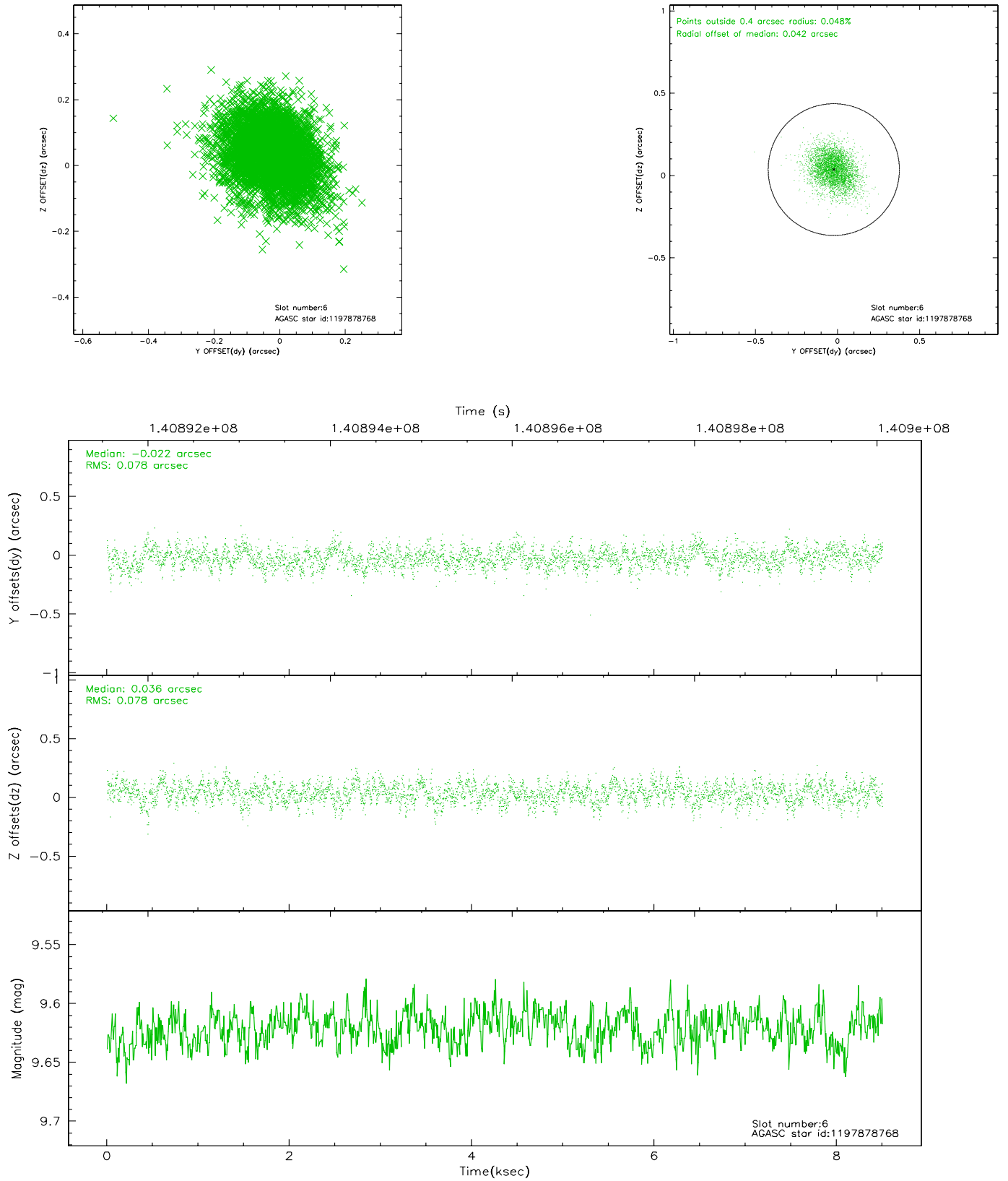
2.4.2 Slot 4



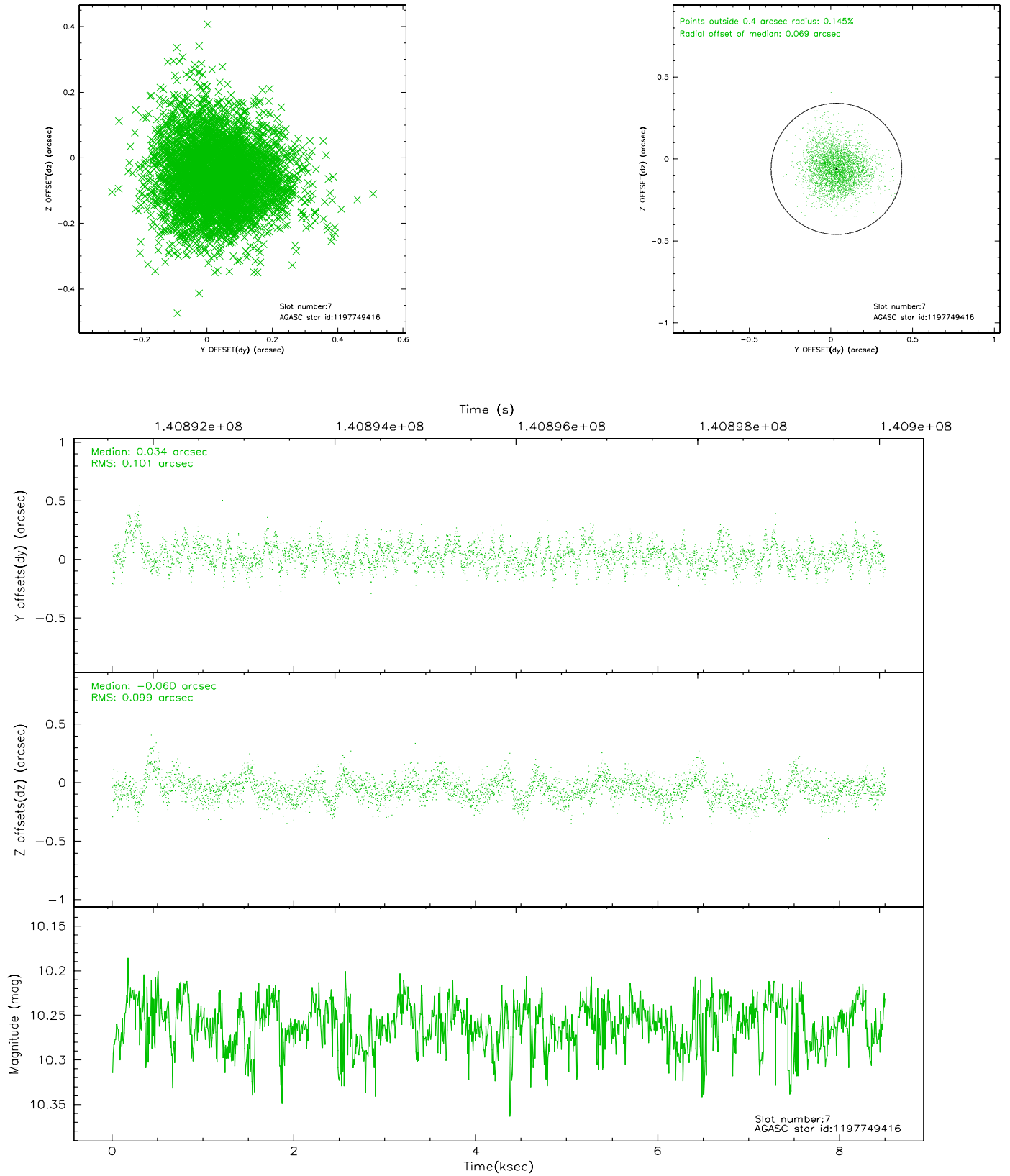
2.4.3 Slot 5



2.4.4 Slot 6

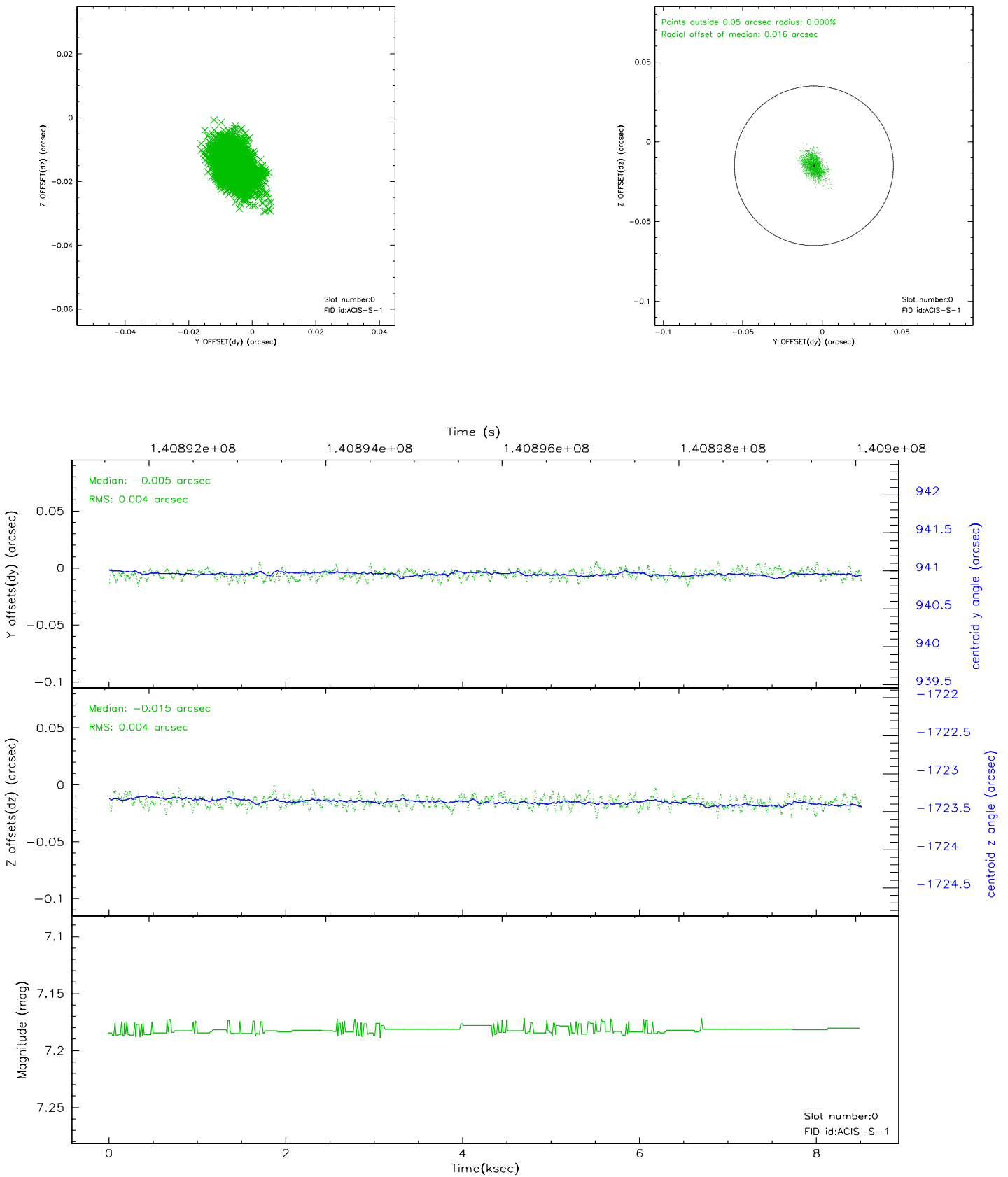


2.4.5 Slot 7

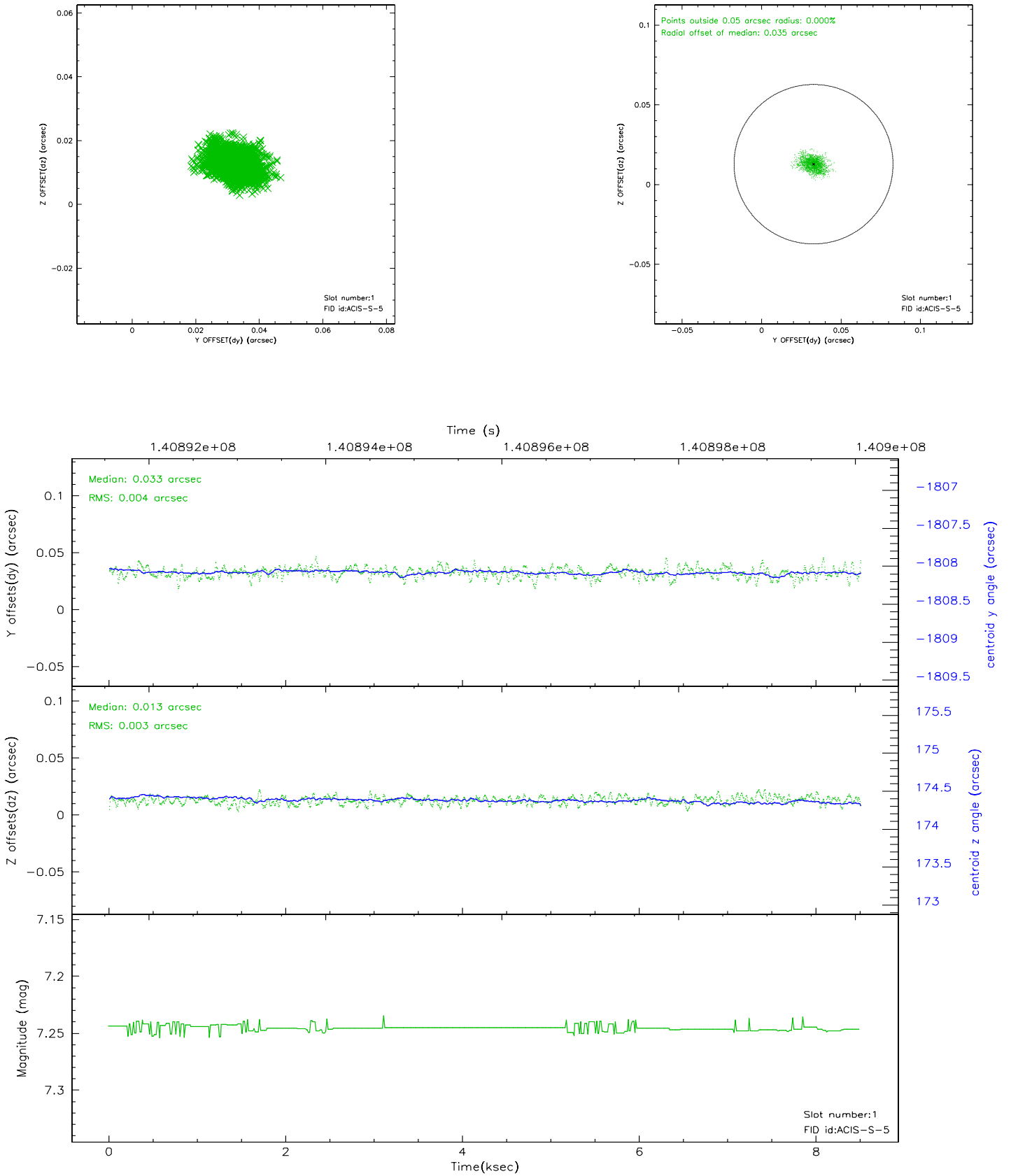


2.5 FID Slots

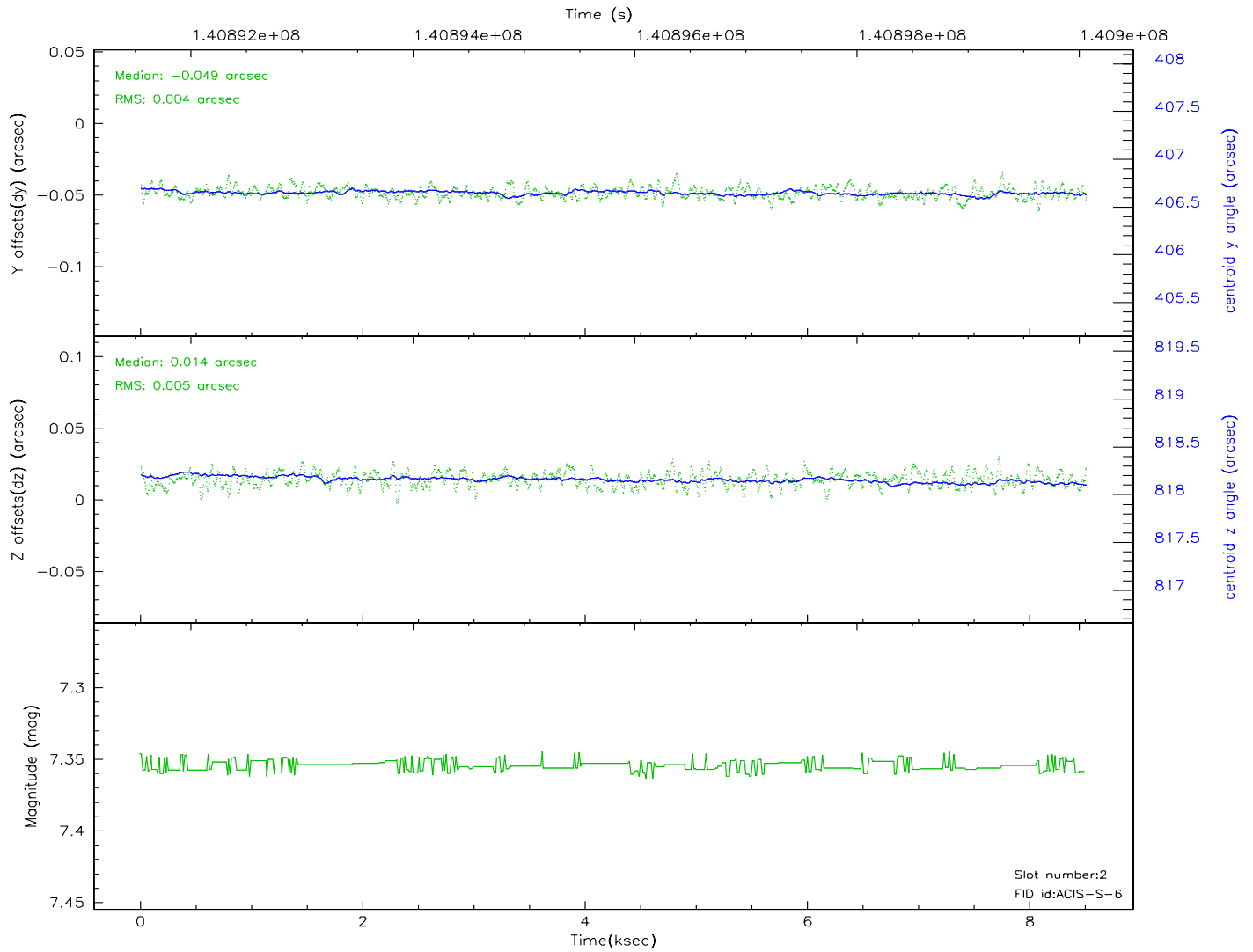
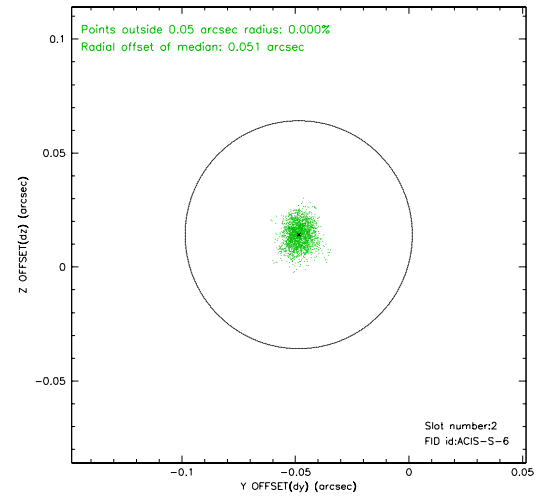
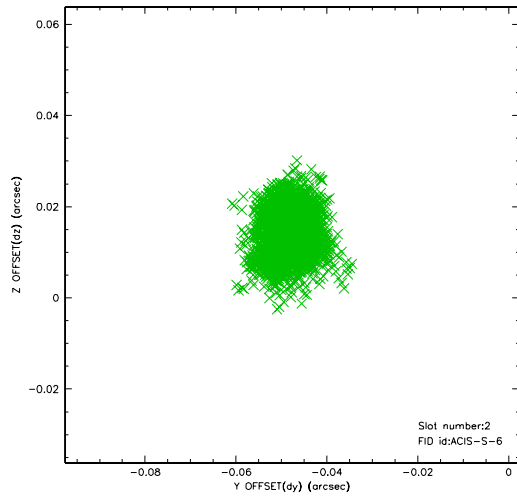
2.5.1 Slot 0



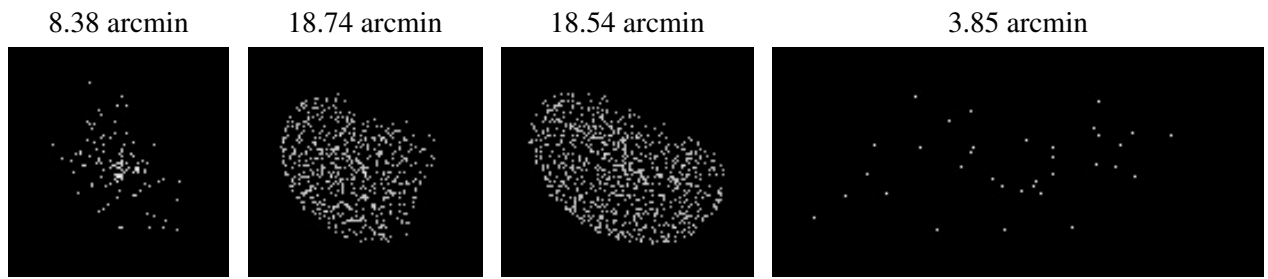
2.5.2 Slot 1



2.5.3 Slot 2



3 Point Sources



A Summary

A.1 Status

V&V Scientist	Jen Lauer
V&V Date (YYYY-MM-DD)	2006.09.20
V&V Edition	1
V&V Disposition and Status	OK
V&V Charge Time	7.862

A.2 Comments

Window constraint met.