

# V&V Reference Report

## L2 ASCDS Version : 7.6.9

Observation 2670 - L2 Version 001  
Chandra X-Ray Center

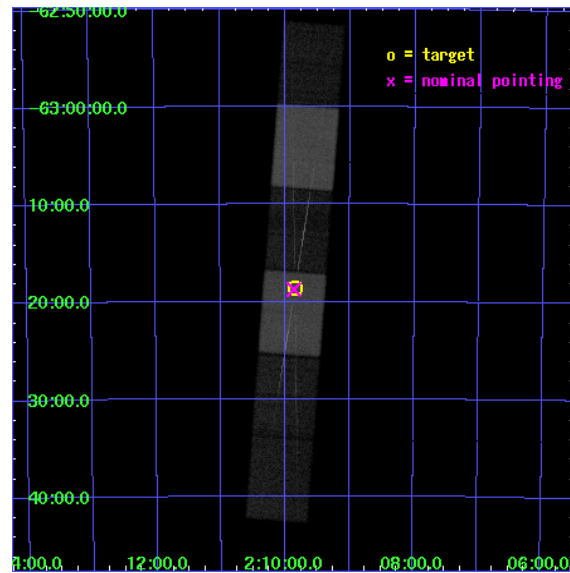
L2 Processing Date : Sep 26 2006

## Contents

<b>1</b>	<b>Front</b>	<b>2</b>
<b>2</b>	<b>OBI</b>	<b>3</b>
2.1	OBI . . . . .	3
2.1.1	Images . . . . .	3
2.1.2	Bias . . . . .	3
2.1.3	Parameters . . . . .	4
2.1.4	Events . . . . .	4
2.2	Compared Parameters . . . . .	5
2.3	Aspect . . . . .	6
2.4	Star Slots . . . . .	9
2.4.1	Slot 3 . . . . .	9
2.4.2	Slot 4 . . . . .	10
2.4.3	Slot 5 . . . . .	11
2.4.4	Slot 6 . . . . .	12
2.4.5	Slot 7 . . . . .	13
2.5	FID Slots . . . . .	14
2.5.1	Slot 0 . . . . .	14
2.5.2	Slot 1 . . . . .	15
2.5.3	Slot 2 . . . . .	16
<b>3</b>	<b>Gratings</b>	<b>17</b>
3.1	HEG Arm . . . . .	17
3.2	MEG Arm . . . . .	19
<b>A</b>	<b>Summary</b>	<b>21</b>
A.1	Status . . . . .	21
A.2	Comments . . . . .	21

# 1 Front

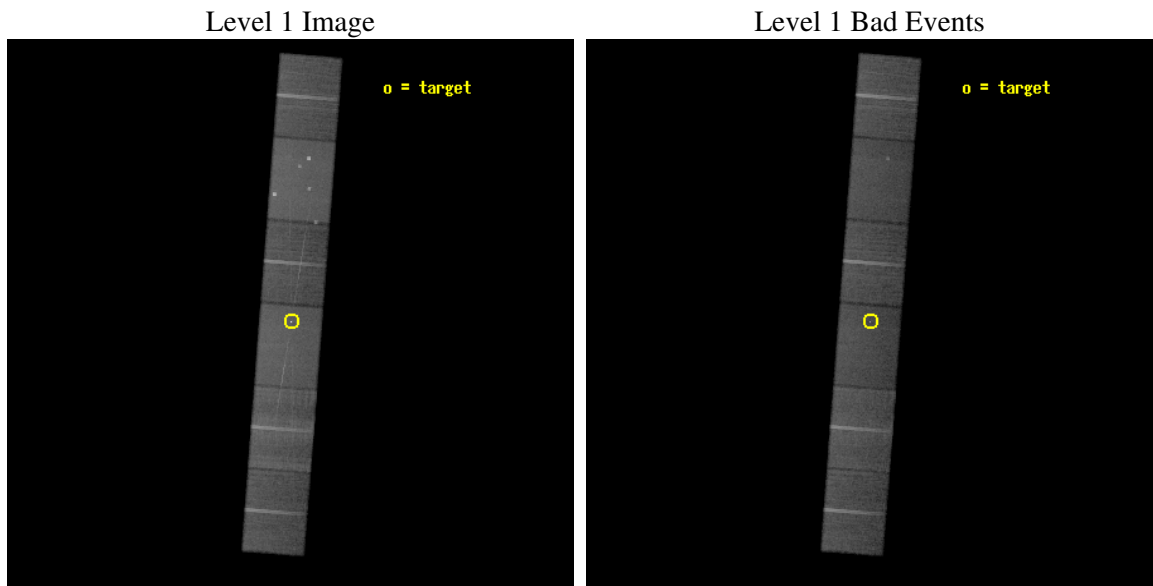
seq_num	300071
obs_id	2670
title	BOUNDARY LAYERS AND HOT FLOWS IN QUIESCENT DWARF NOVAE
observer	DR. JOHN RAYMOND
object	WX HYI
dtcycle	0
cycle	P
ra_targ	32.461667
dec_targ	-63.311194
ra_nom	32.465644556431
dec_nom	-63.312515178508
roll_nom	94.438883496821
revision	2
ontime	50072.5
livetime	49263.785694046
ontime4	50071.603398681
ontime5	50072.5
ontime6	50072.5
ontime7	50072.5
ontime8	50072.5
ontime9	50072.5
l2events	360727



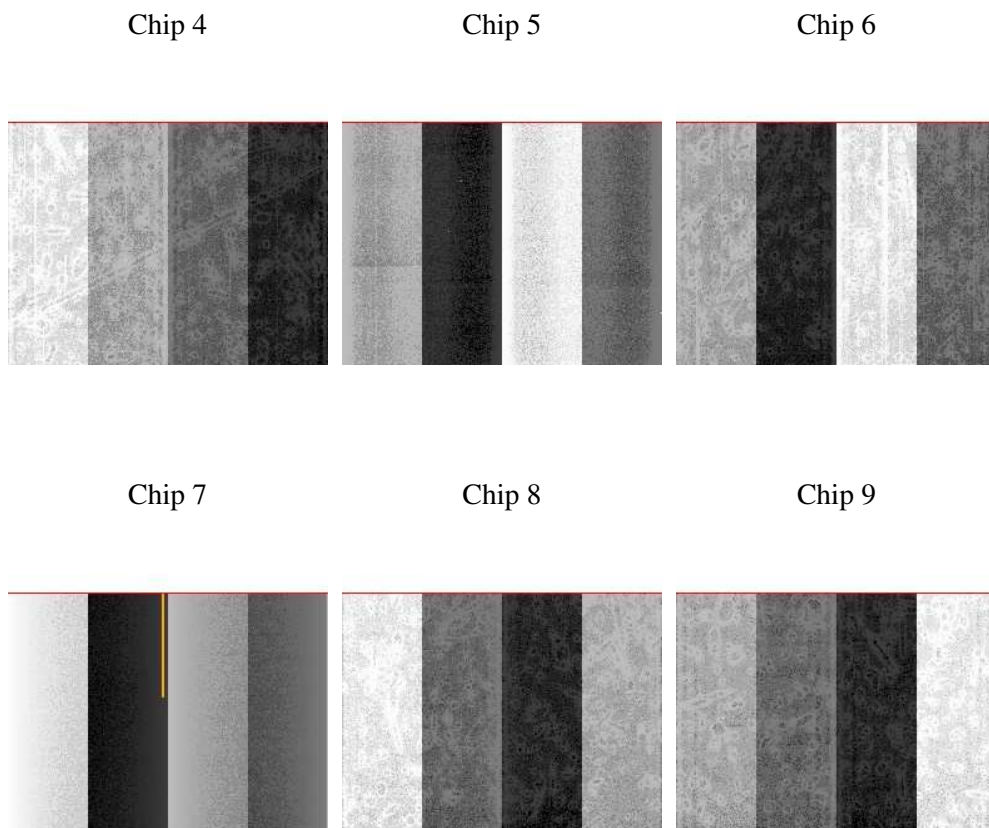
## 2 OBI

### 2.1 OBI

#### 2.1.1 Images



#### 2.1.2 Bias



### 2.1.3 Parameters

obi_num	0
ascdsver	7.6.9
caldsver	3.2.3
date	2006-09-26T17:07:38
revision	2

sched_exp_time	50000.000000
ontime	50075.672699511
ontime4	50073.131689429
ontime5	50075.672699511
ontime6	50075.672699511
ontime7	50075.672699511
ontime8	50075.672699511
ontime9	50075.672699511
l1events	1618992

### 2.1.4 Events

	ccd 4	ccd 5	ccd 6	ccd 7	ccd 8	ccd 9
level 1 events	245803	326569	228224	298303	301384	218709
rejected events	216241	175485	195706	173757	228898	189714
rejected %	87%	53%	85%	58%	75%	86%

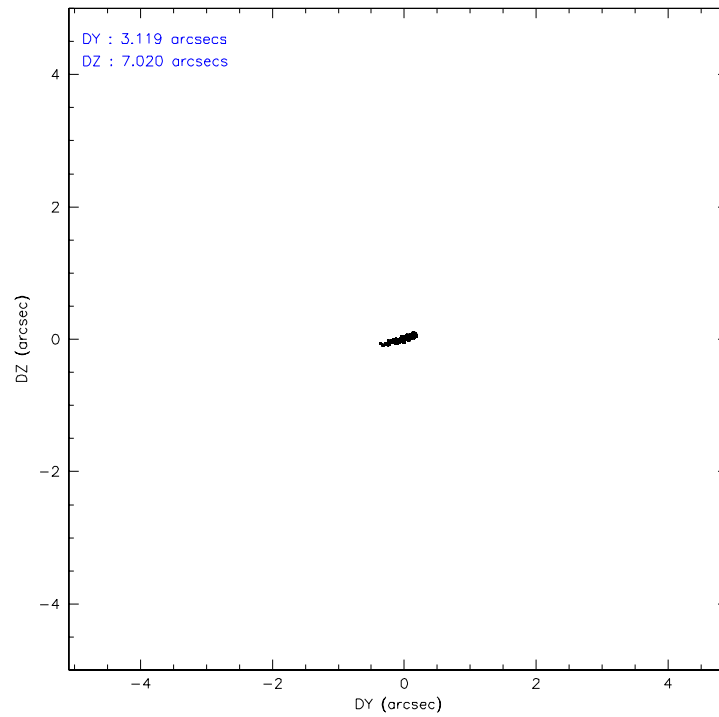
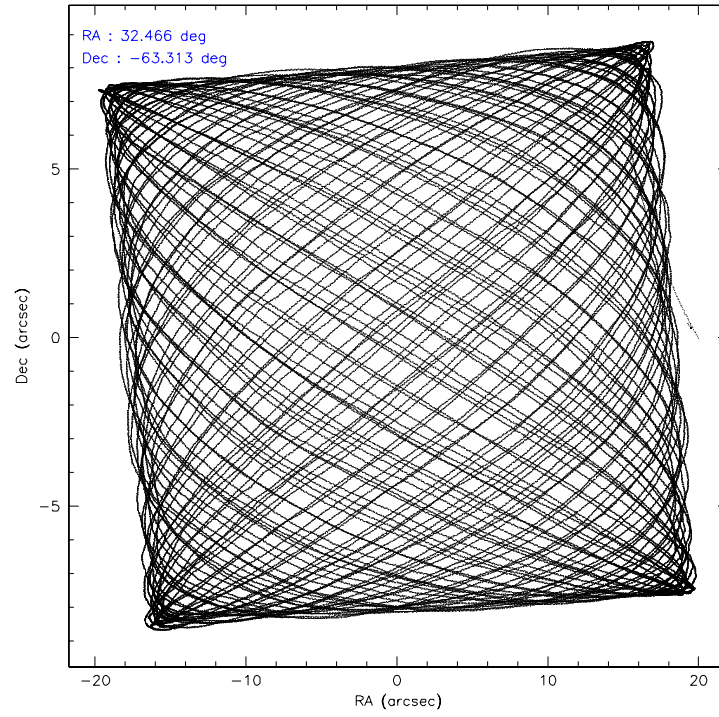
	ccd 4	ccd 5	ccd 6	ccd 7	ccd 8	ccd 9
grade 0 events	11902	20828	14512	9250	22829	11740
	4%	6%	6%	3%	7%	5%
grade 1 events	77	884	100	249	203	93
	0%	0%	0%	0%	0%	0%
grade 2 events	7046	43125	6245	30342	14778	5834
	2%	13%	2%	10%	4%	2%
grade 3 events	2734	3866	3044	8040	8751	2897
	1%	1%	1%	2%	2%	1%
grade 4 events	2799	3755	2951	7879	7820	2813
	1%	1%	1%	2%	2%	1%
grade 5 events	8182	15905	9400	21332	12511	9959
	3%	4%	4%	7%	4%	4%
grade 6 events	5085	79527	5768	69044	18310	5713
	2%	24%	2%	23%	6%	2%
grade 7 events	207978	158679	186204	152167	216182	179660
	84%	48%	81%	51%	71%	82%

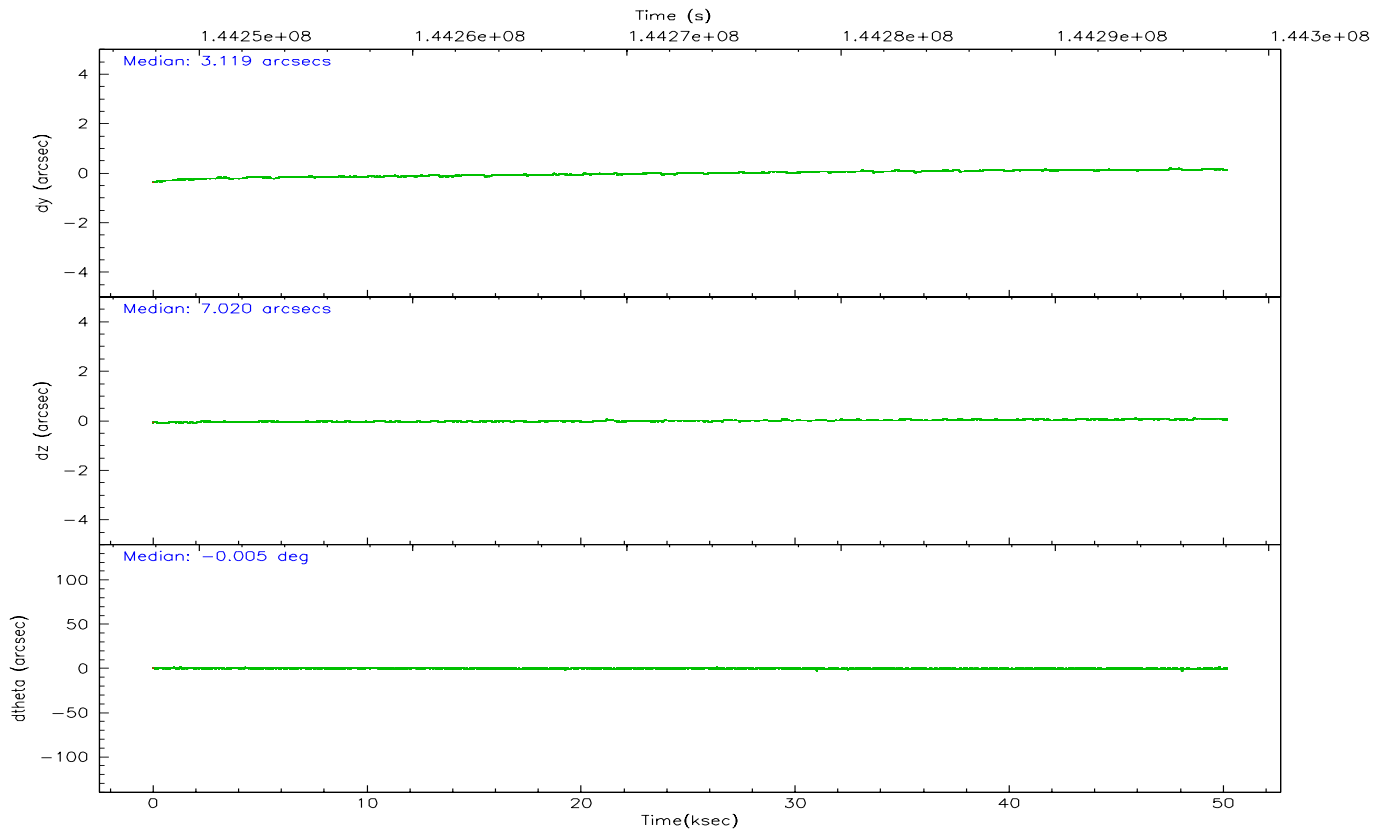
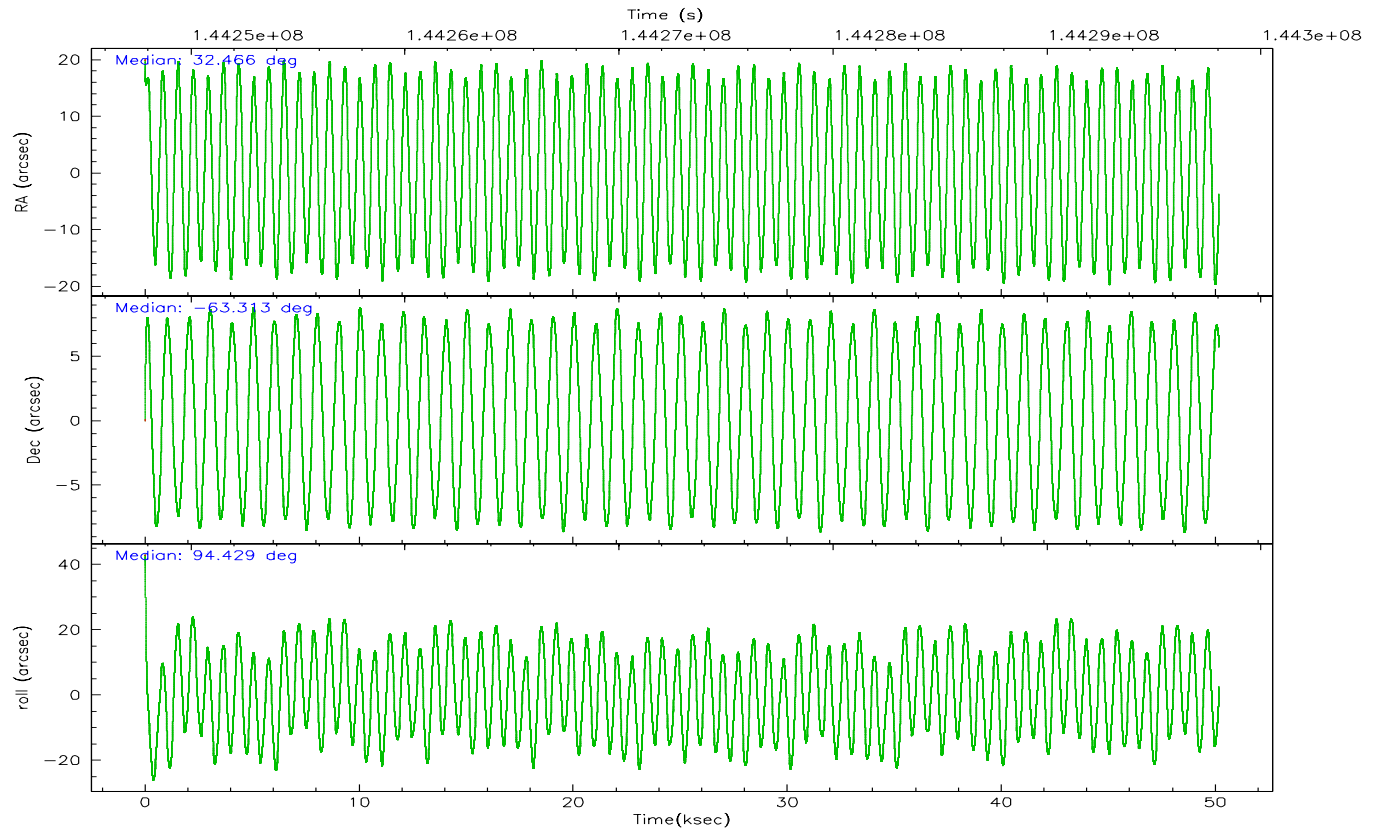


## 2.2 Compared Parameters

Parameter	Planned	Actual	Parameter	Planned	Actual
Instrument	ACIS	ACIS	Obspar format version number	6	6
Detector	ACIS-456789	ACIS-456789	Obspar file type	PREDICTED	ACTUAL
Grating	HETG	HETG	Obspar update status	NONE	UPDATED
Data mode	FAINT	FAINT	Number of optional ACIS chips dropped	0	0
Observation mode	POINTING	POINTING	On-chip summing requested	N	N
Pointing RA	32.500610	32.46564455643139	Subarray requested	CUSTOM	CUSTOM
Pointing Dec	-63.334797	-63.31251517850778	Subarray start row	1	1
Pointing Roll	94.313488	94.43888349682085	Subarray row count	774	774
SIM focus pos (mm)	-0.684267	-0.6828225247311905	Alternating exposures requested	N	N
SIM defocus (mm)	0	0.001444936568705701	Primary exposure time	0.000000	2.5
SIM translation stage pos (mm)	-187.132523	-187.1254020033014			
SIM translation stage offset (mm)	-3	-3.007120579706367			
Observation start time	144248042.184000	144246996.03164			
Observation start date	2002-07-28T12:52:58	2002-07-28T12:36:36			
Observation end time	144298042.184000	144298696.52127			
Observation end date	2002-07-29T02:46:18	2002-07-29T02:58:16			
Read mode	TIMED	TIMED			

## 2.3 Aspect



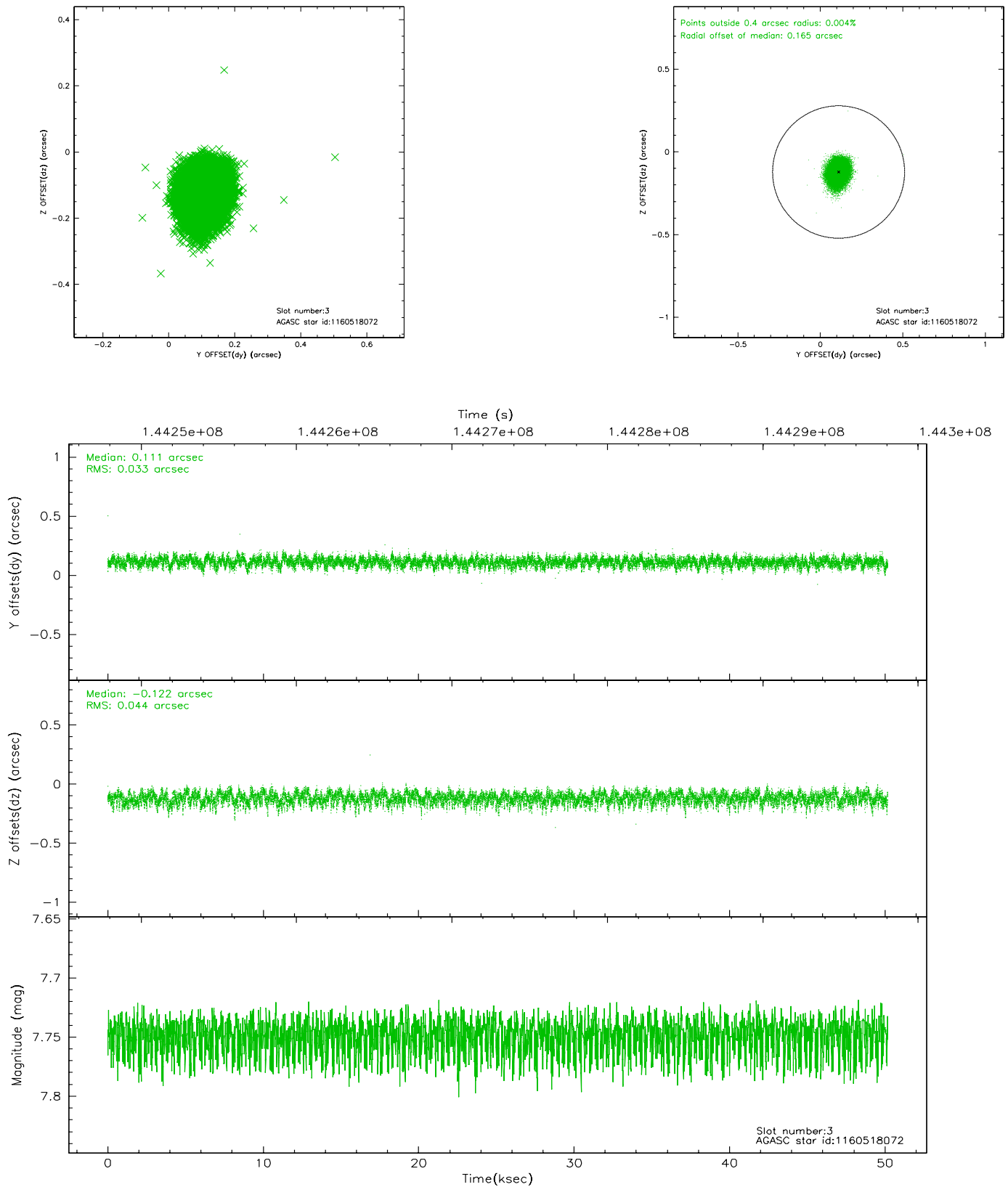


### Slot Statistics

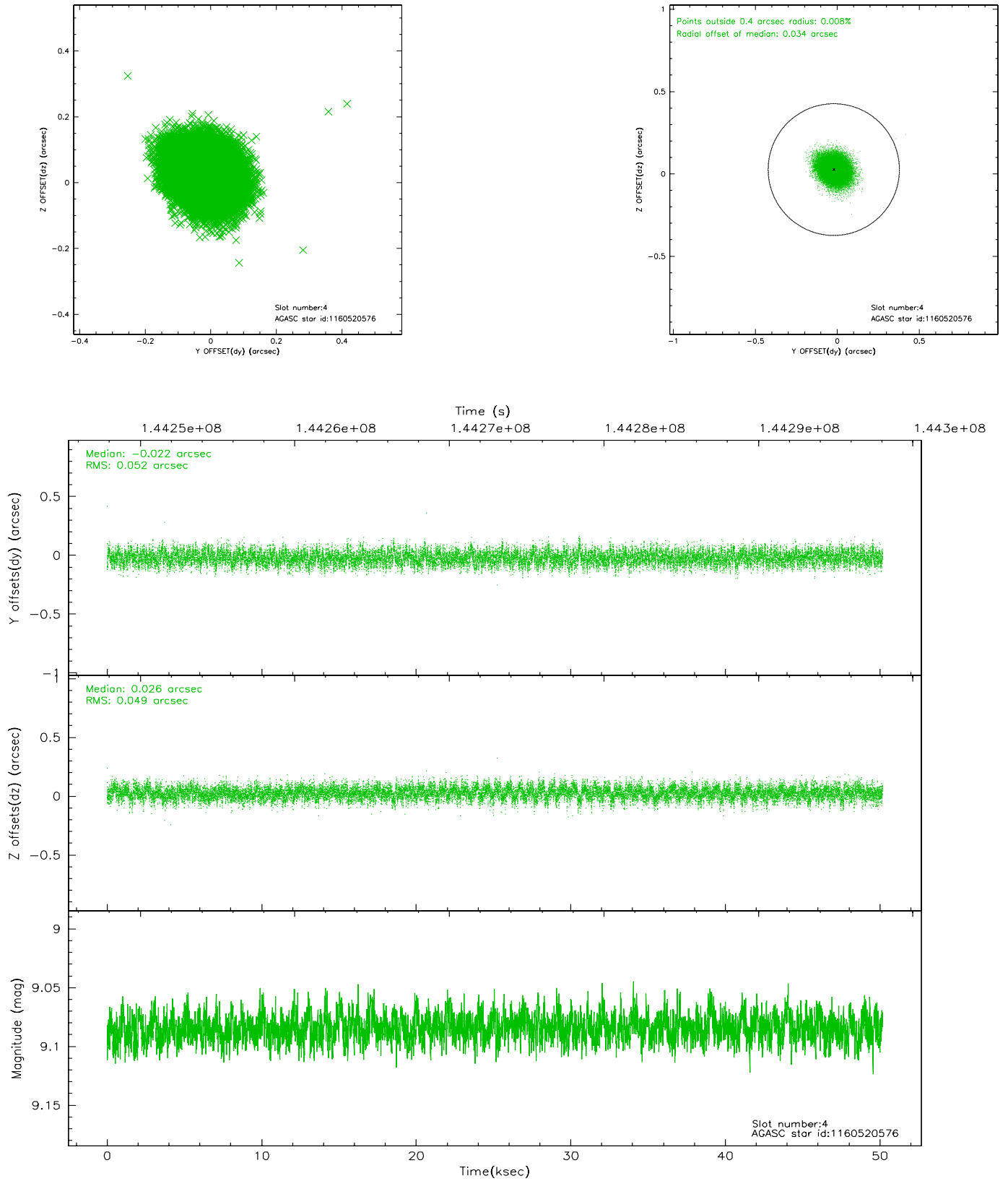
slot	status	id	mag	n_pts	med_dy	med_dz	dr1	dr2	ra	dec	mean_y	mean_z
0	FID	ACIS-S-2	7.10	12241	-0.037	-0.027	0.008	0.012	0.000000	0.000000	-755.56	-1790.31
1	FID	ACIS-S-4	7.20	12241	-0.020	0.025	0.009	0.015	0.000000	0.000000	2157.72	118.27
2	FID	ACIS-S-5	7.23	12241	0.025	0.010	0.008	0.015	0.000000	0.000000	-1808.38	111.86
3	GUIDE	1160518072	7.75	24480	0.111	-0.122	0.058	0.093	33.556814	-63.795689	-1794.02	-1547.90
4	GUIDE	1160520576	9.08	24475	-0.022	0.026	0.077	0.122	33.609078	-62.969004	1161.57	-1905.13
5	GUIDE	1160512984	9.84	24468	-0.036	-0.092	0.145	0.238	31.451484	-62.689047	2434.56	1555.14
6	GUIDE	1160519176	10.04	24458	0.134	-0.078	0.110	0.186	33.426947	-63.226869	264.26	-1525.35
7	GUIDE	1160517488	10.26	24459	-0.187	0.264	0.128	0.212	32.712813	-63.694832	-1318.43	-239.15

## 2.4 Star Slots

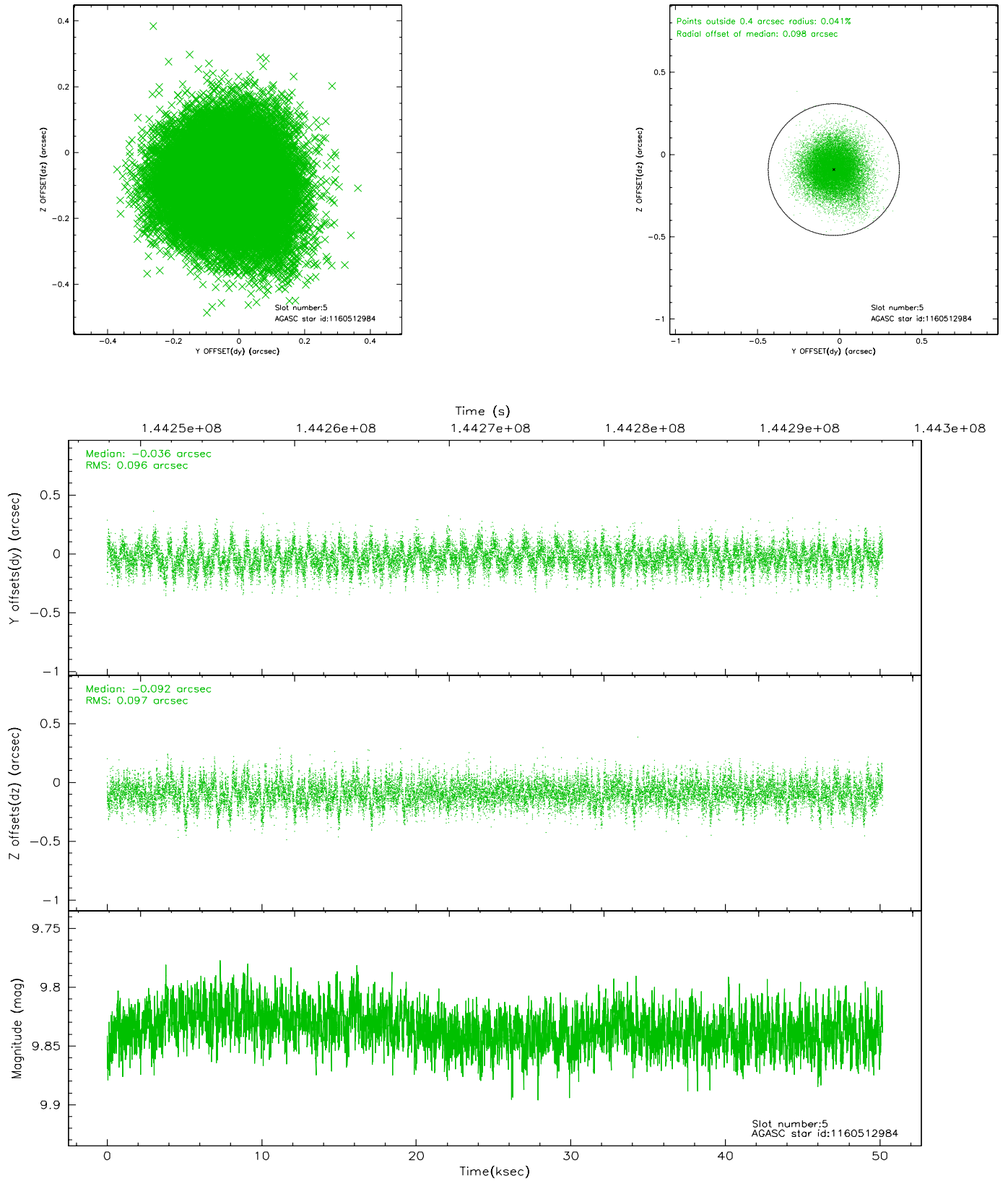
### 2.4.1 Slot 3



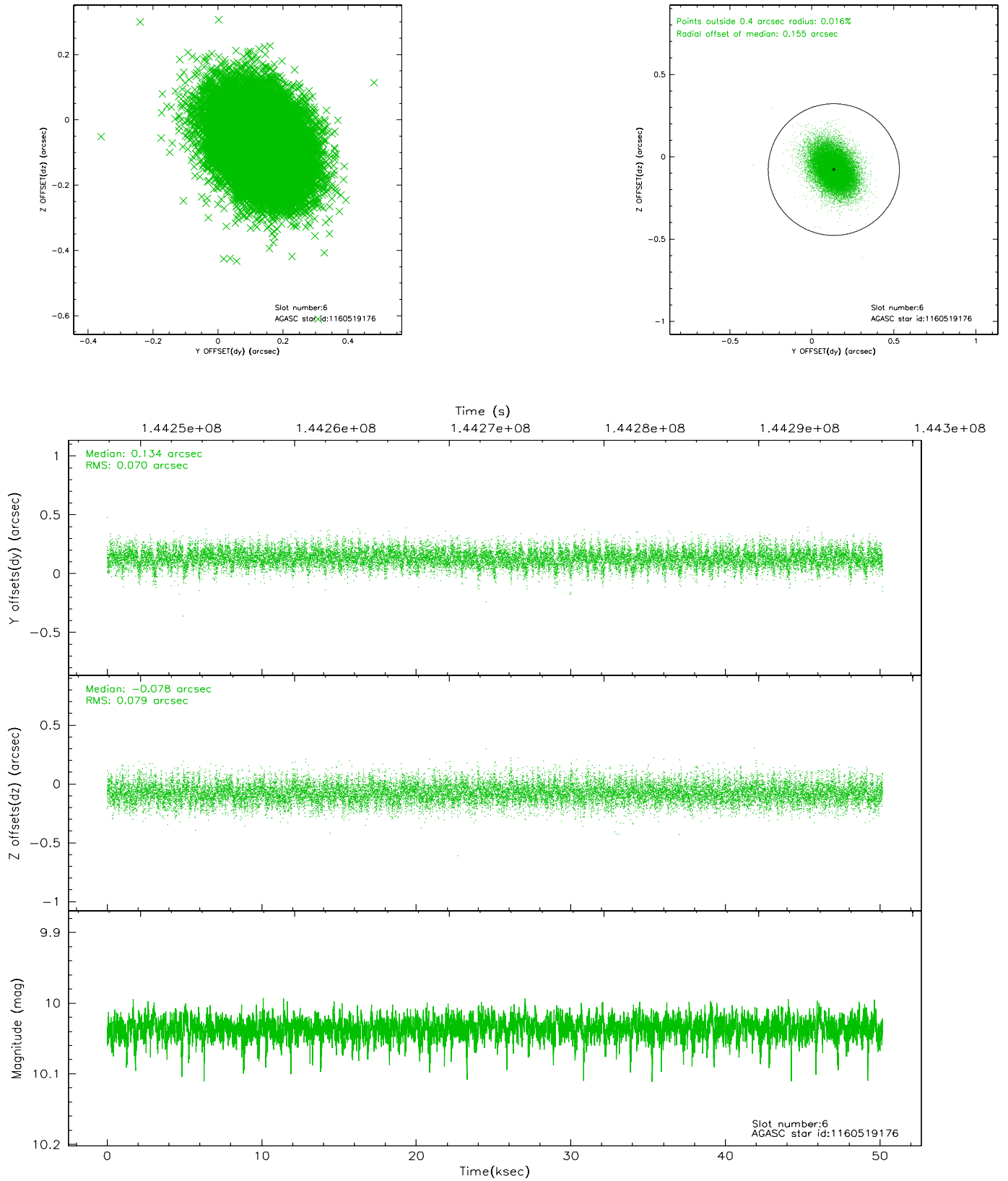
## 2.4.2 Slot 4



### 2.4.3 Slot 5

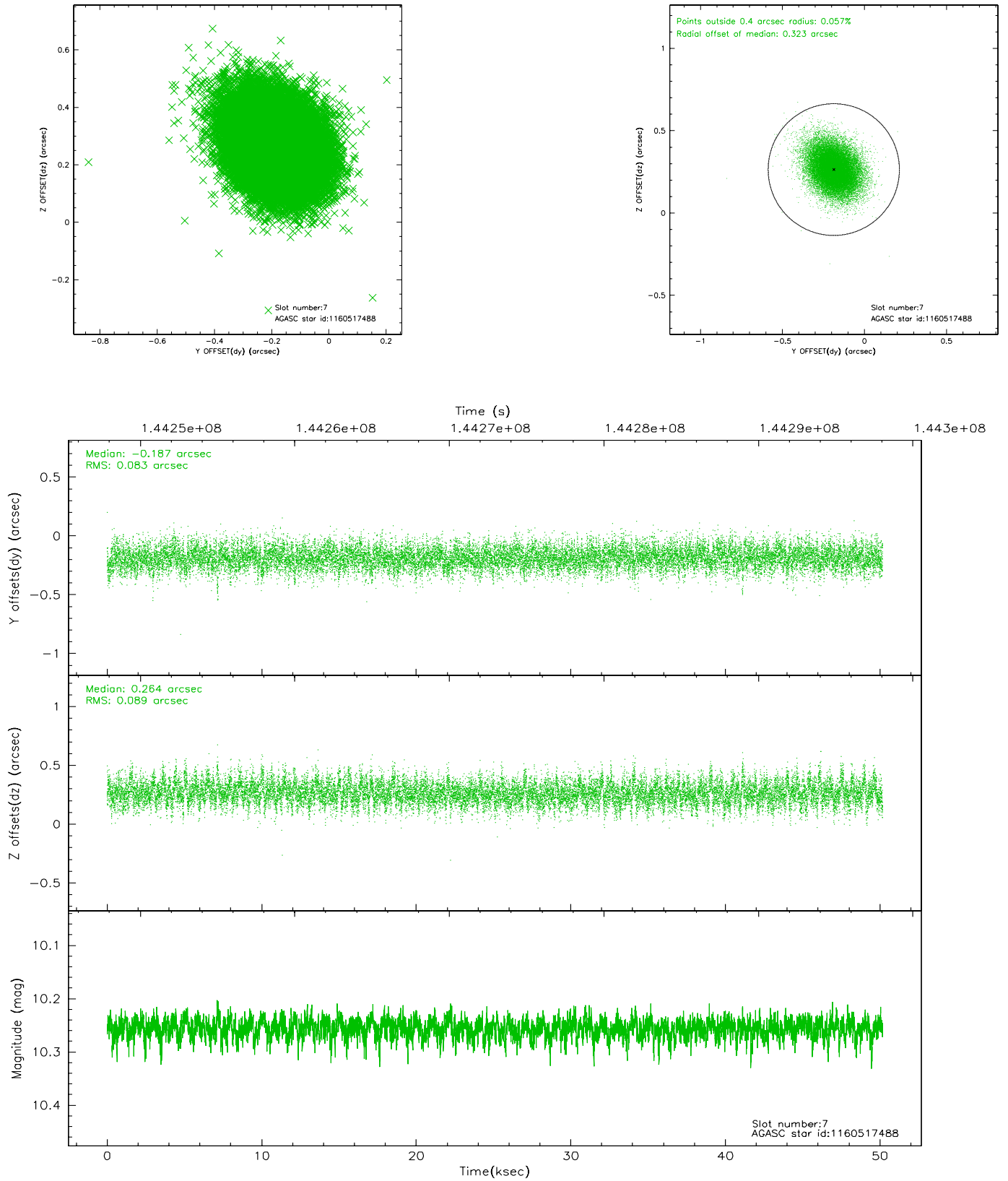


## 2.4.4 Slot 6



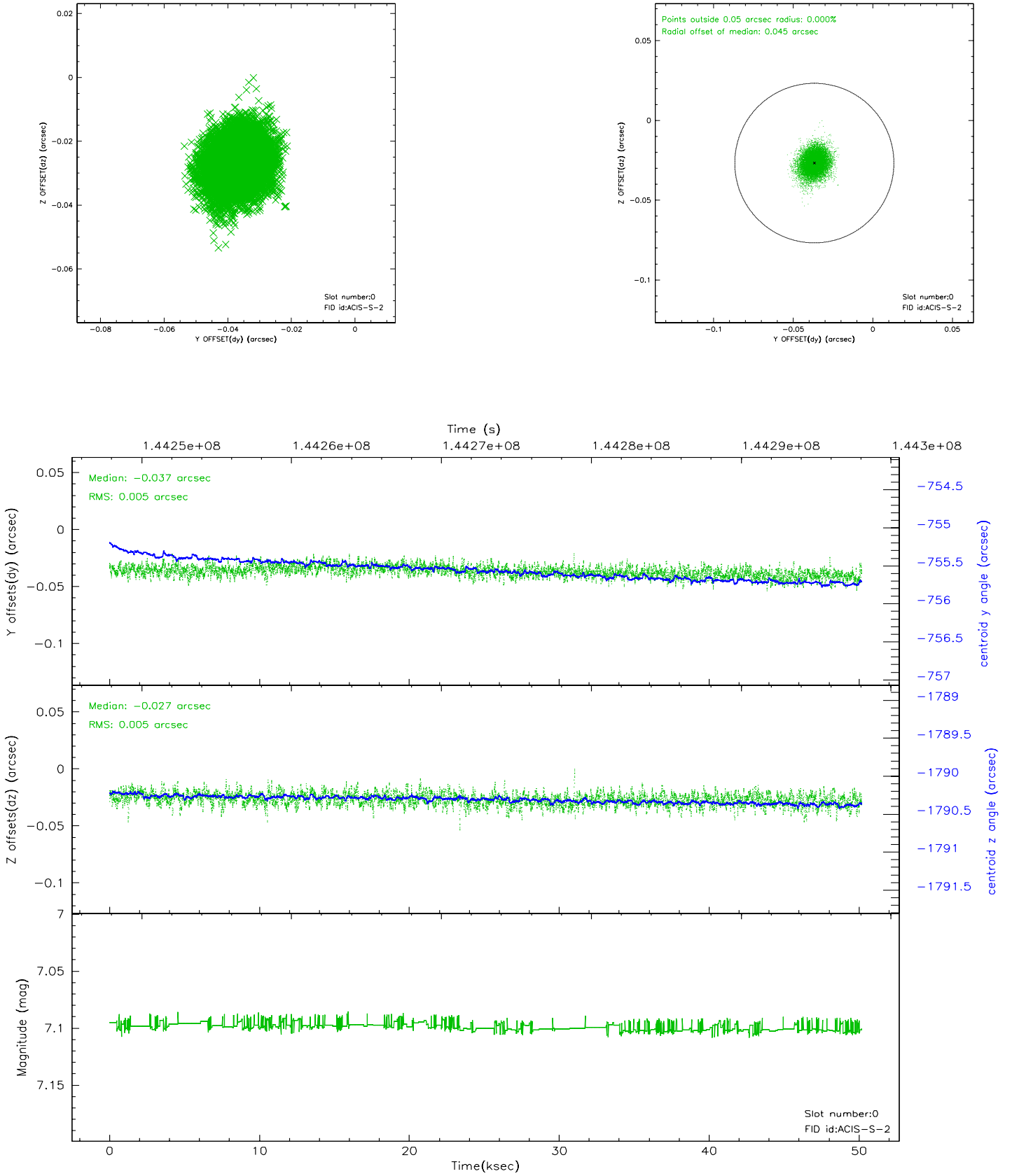


## 2.4.5 Slot 7

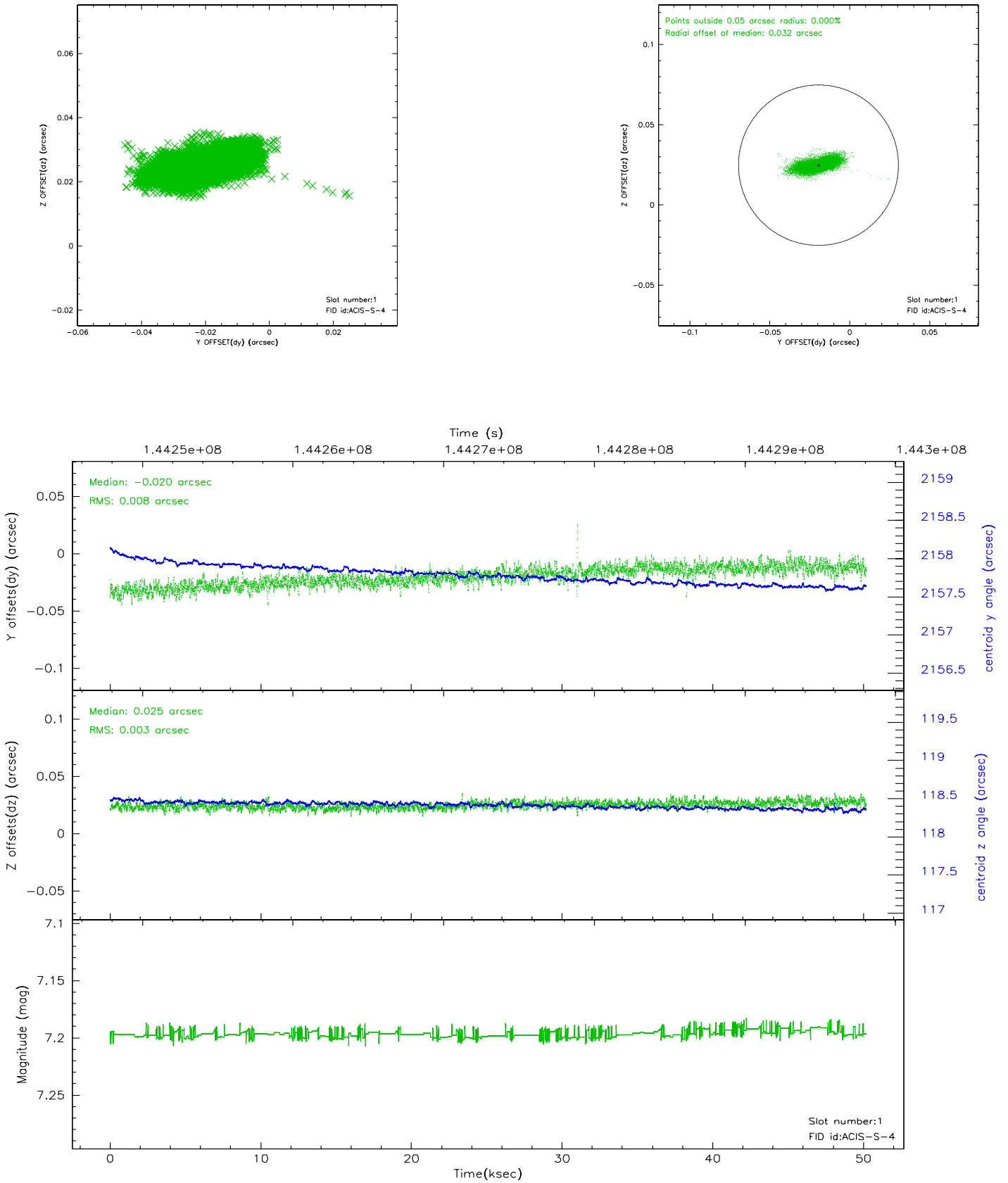


## 2.5 FID Slots

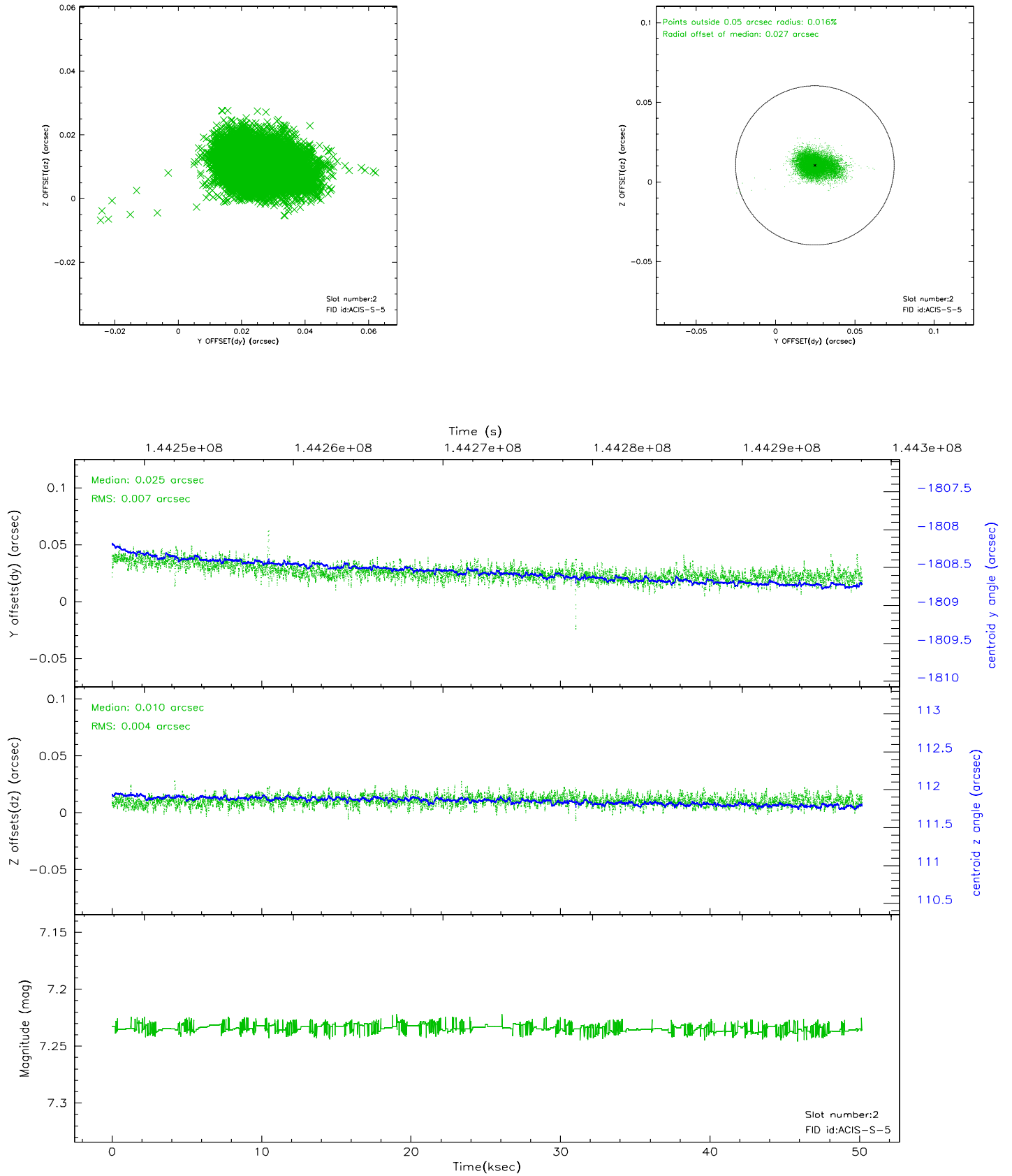
### 2.5.1 Slot 0



## 2.5.2 Slot 1

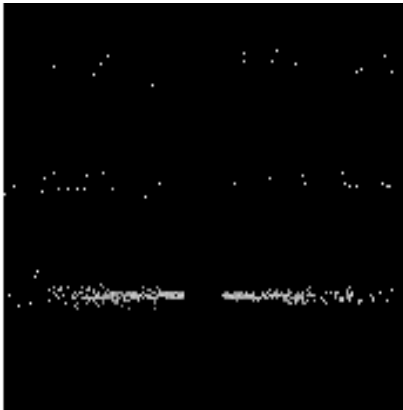


### 2.5.3 Slot 2

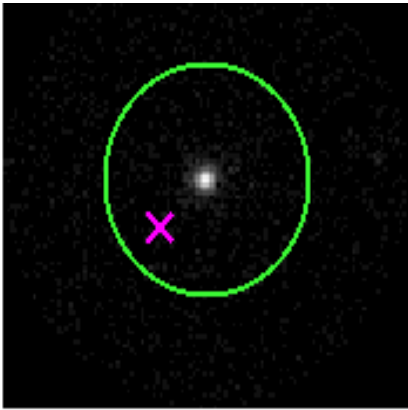


# 3 Gratings

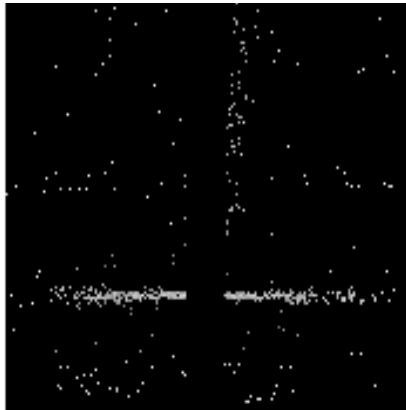
## 3.1 HEG Arm



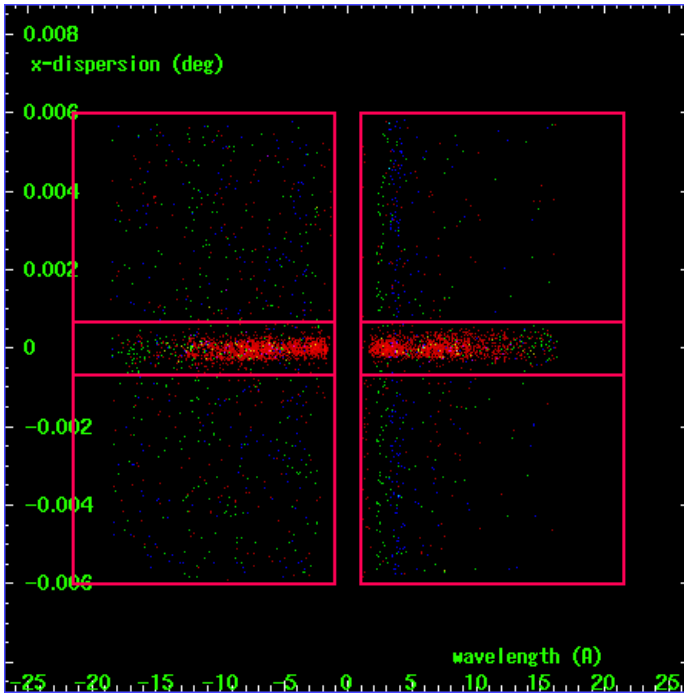
HEG Order Sort 123



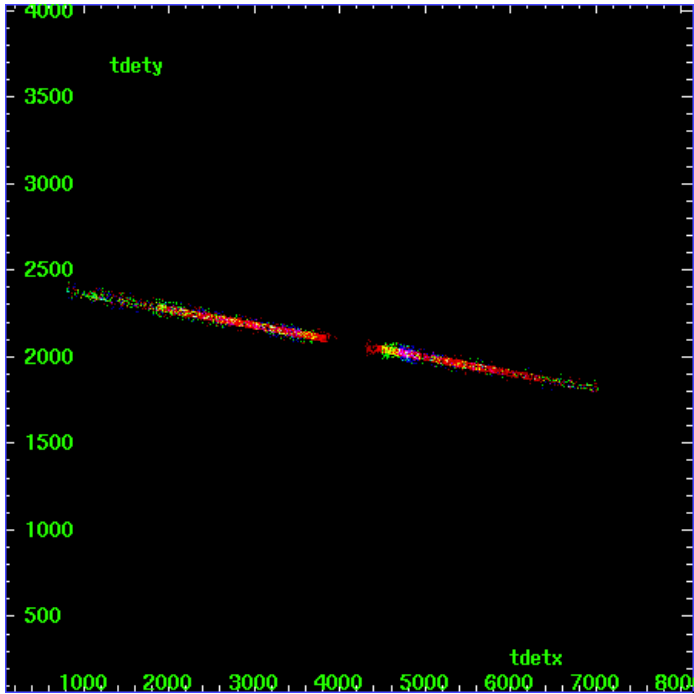
HEG Zero Order



HEG Order Sort ALL

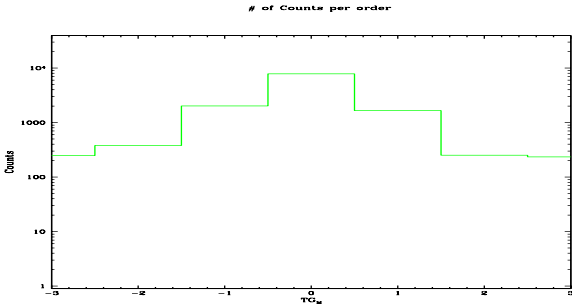


Spot Image HEG

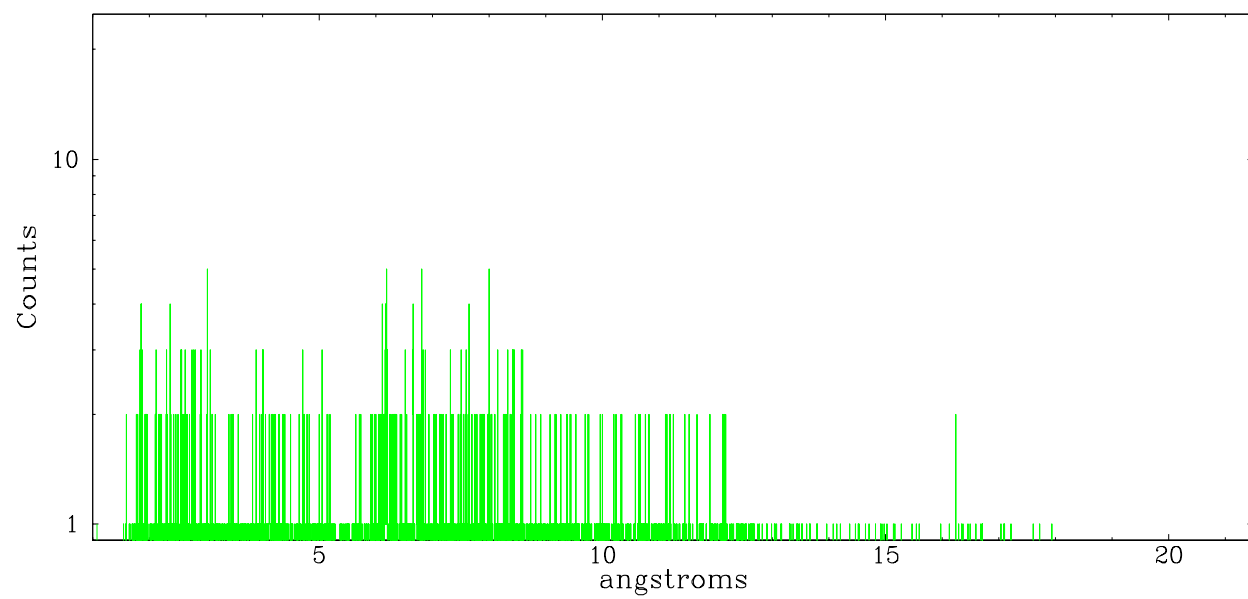


Full Detector HEG

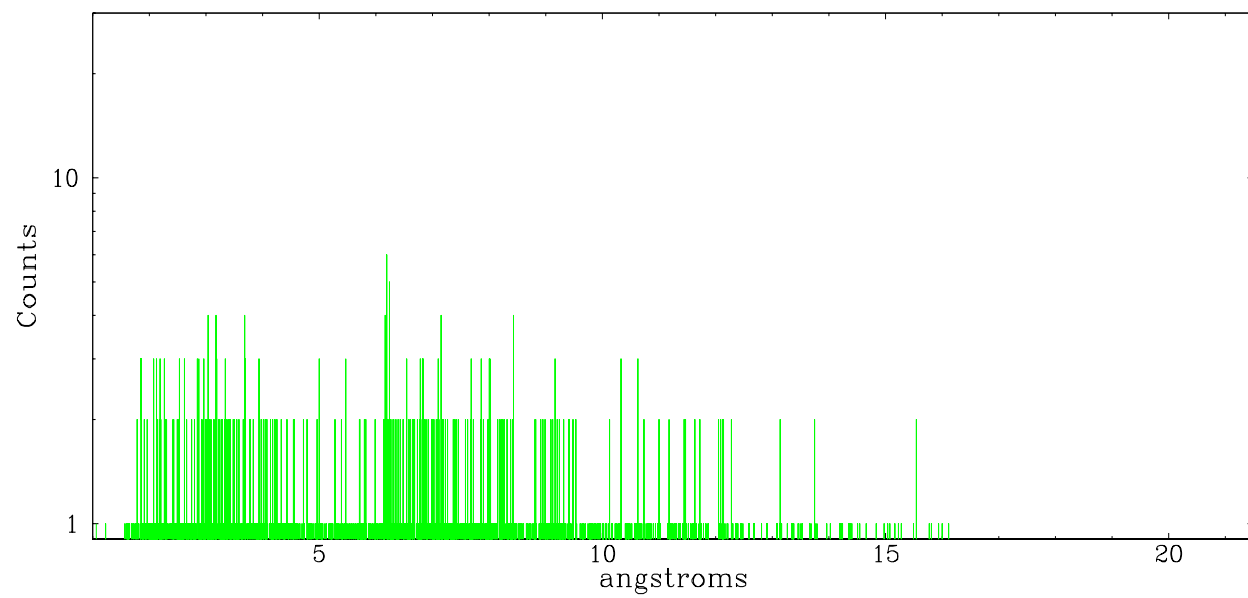
	order -3	order -2	order -1	order 0	order 1	order 2	order 3
Events	249	379	2018	7866	1664	253	234



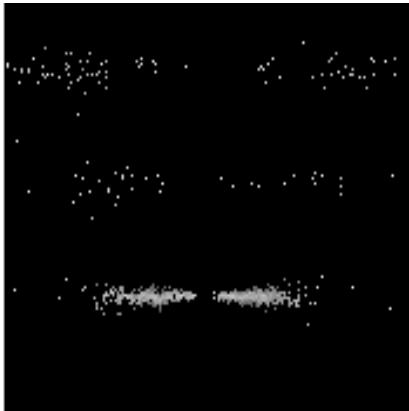
heg order -1



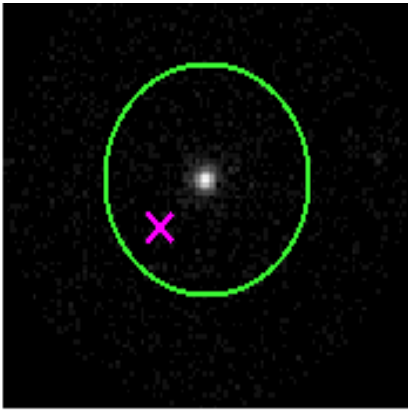
heg order +1



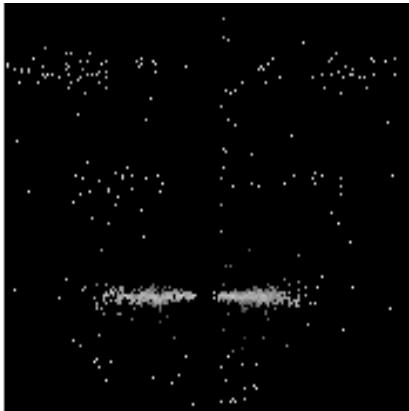
### 3.2 MEG Arm



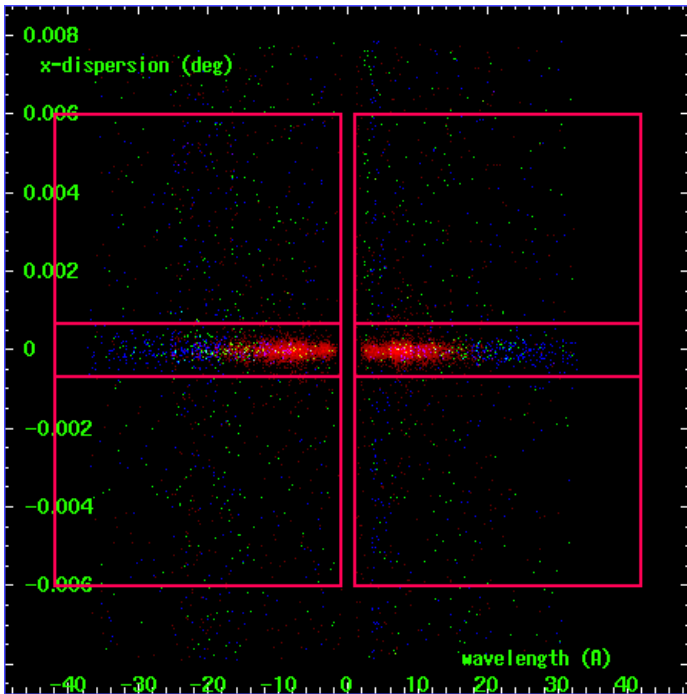
MEG Order Sort 123



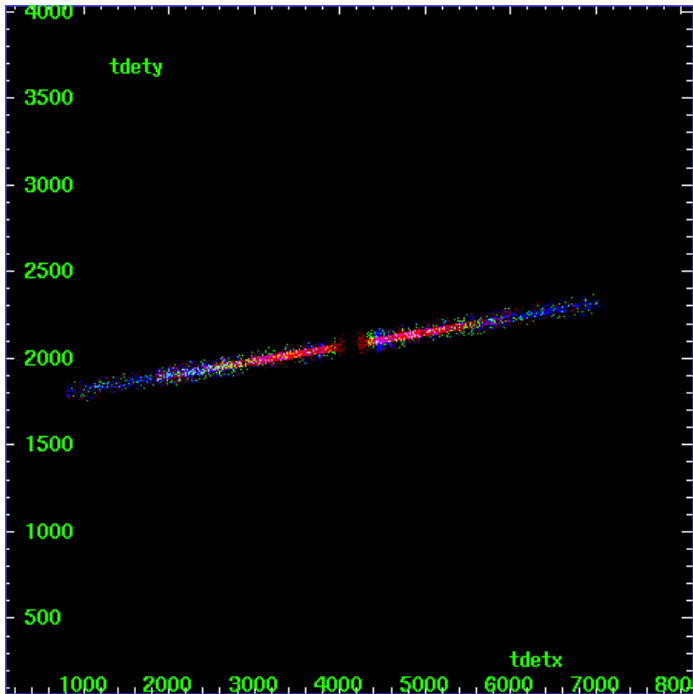
MEG Zero Order



MEG Order Sort ALL

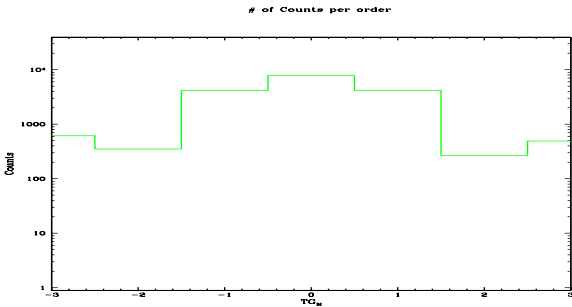


Spot Image MEG

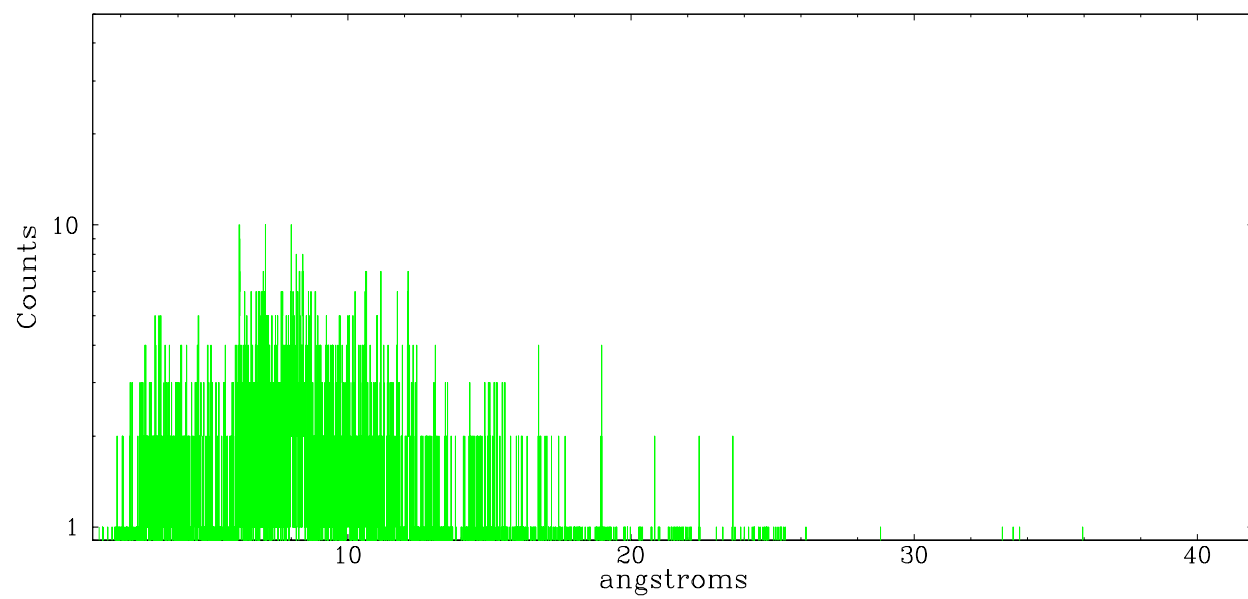


Full Detector MEG

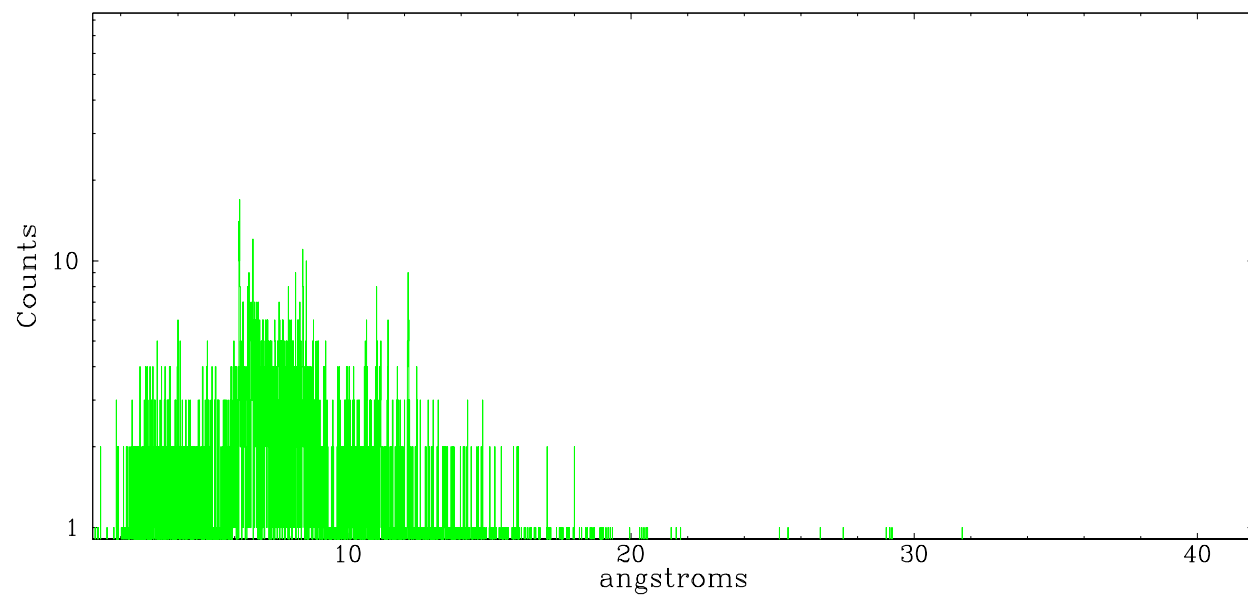
	order -3	order -2	order -1	order 0	order 1	order 2	order 3
Events	614	350	4149	7866	4148	269	491



meg order -1



meg order +1





## A Summary

### A.1 Status

V&V Scientist	Joy Nichols
V&V Date (YYYY-MM-DD)	2006.09.27
V&V Edition	1
V&V Disposition and Status	OK
V&V Charge Time	50.075

### A.2 Comments