

V&V Reference Report

L2 ASCDS Version : 8.4.5

Observation 2620 - L2 Version 4
Chandra X-Ray Center

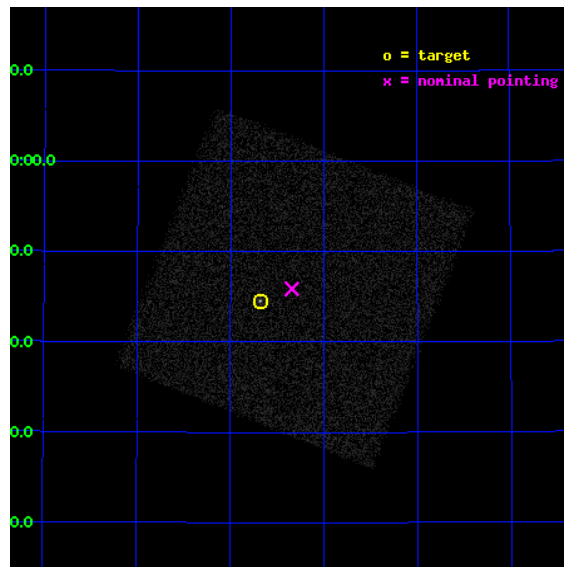
L2 Processing Date : Oct 1 2012

Contents

1	Front	2
2	OBI	3
2.1	OBI	3
2.1.1	Images	3
2.1.2	Parameters	4
2.1.3	Events	4
2.2	Compared Parameters	5
2.3	Aspect	6
2.4	Star Slots	9
2.4.1	Slot 3	9
2.4.2	Slot 4	10
2.4.3	Slot 5	11
2.4.4	Slot 6	12
2.4.5	Slot 7	13
2.5	FID Slots	14
2.5.1	Slot 0	14
2.5.2	Slot 1	15
2.5.3	Slot 2	16
A	Summary	17
A.1	Status	17
A.2	Comments	17

1 Front

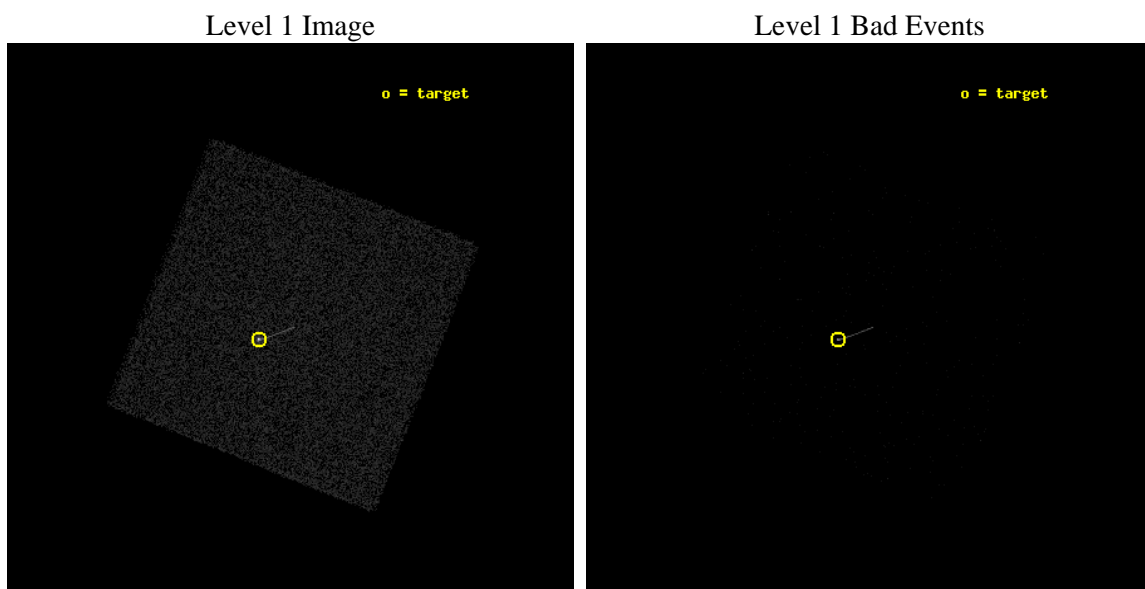
seq_num	290176	Sequence number
obs_id	2620	Observation id
title	AO3 HRC-I CALIBRATION OBSERVATION: MINI-SCAN OF ARLAC	Proposal tit
observer	Dr. CXC Calibration	Principal investigator
object	ARLAC	Source name
ra_targ	332.17	Observer's specified target RA [deg]
dec_targ	45.742306	Observer's specified target Dec [deg]
ra_nom	332.08556379051	Nominal RA [deg]
dec_nom	45.764986448155	Nominal Dec [deg]
roll_nom	336.71681511923	Nominal Roll [deg]
revision	4	Processing version of data
ontime	1198.4812982976	[s]
livetime	1191.8198721098	Ontime multiplied by DTCOR
l2events	37480	Number of level 2 events



2 OBI

2.1 OBI

2.1.1 Images



2.1.2 Parameters

obi_num	1	Obi number	sched_exp_time	1000.000000	[s] Scheduled observation exposure time
ascdsver	8.4.5	Processing system revision	ontime	1198.4812982976	[s]
caldbver	4.5.2	 	l1events	67427	Number of level 1 events
date	2012-10-01T03:13:36	Date and time of file creation			
revision	4	Processing version of data			

2.1.3 Events

Level 1 Events

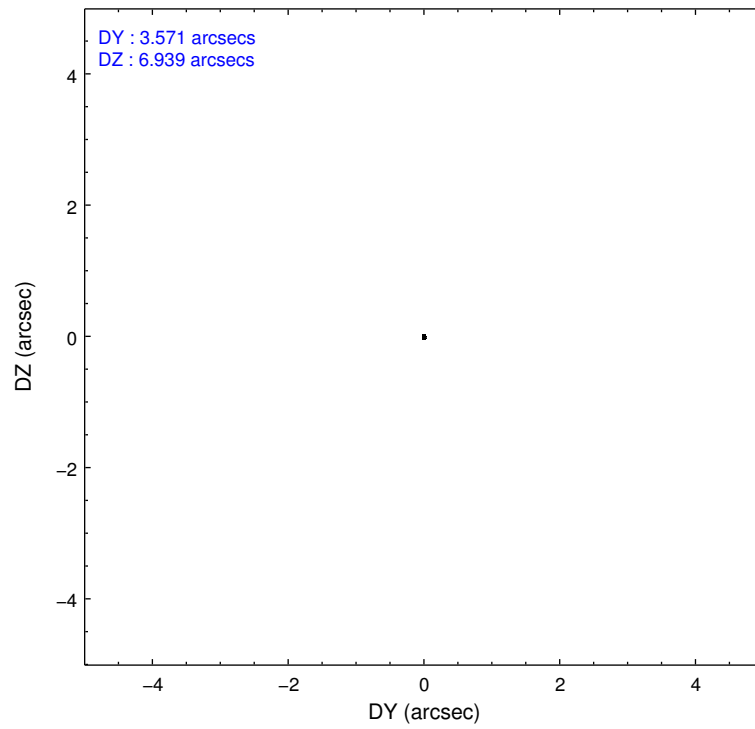
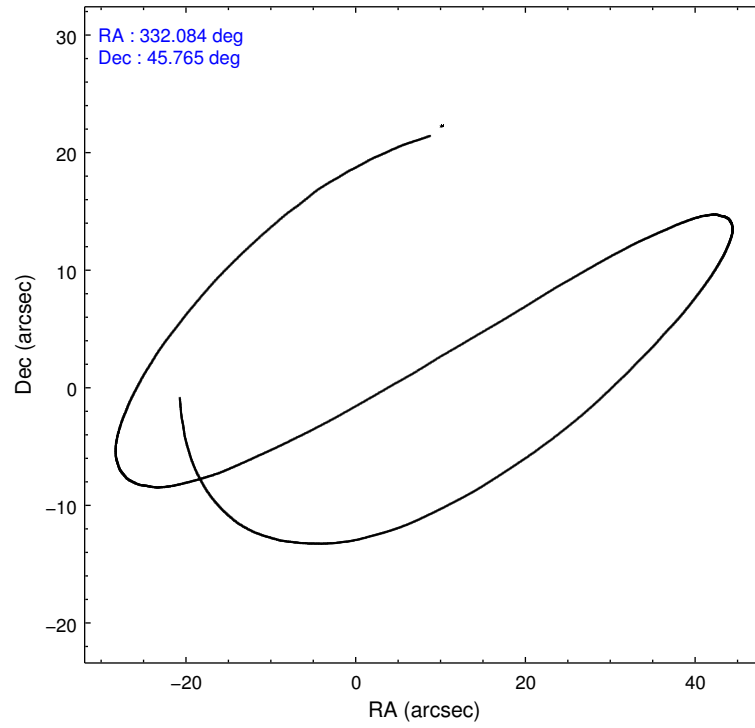
	segment 0
level 1 events	67427
rejected events	13622
rejected %	20%

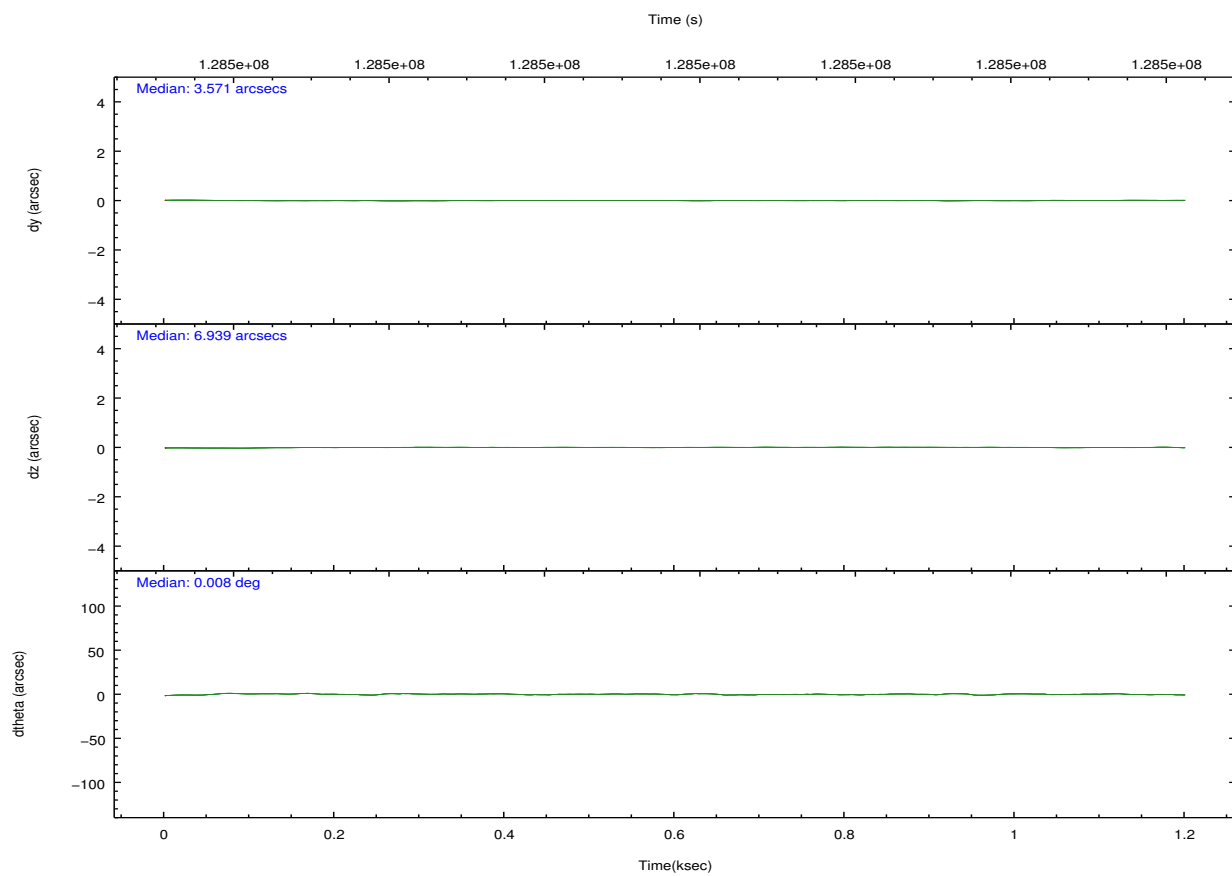
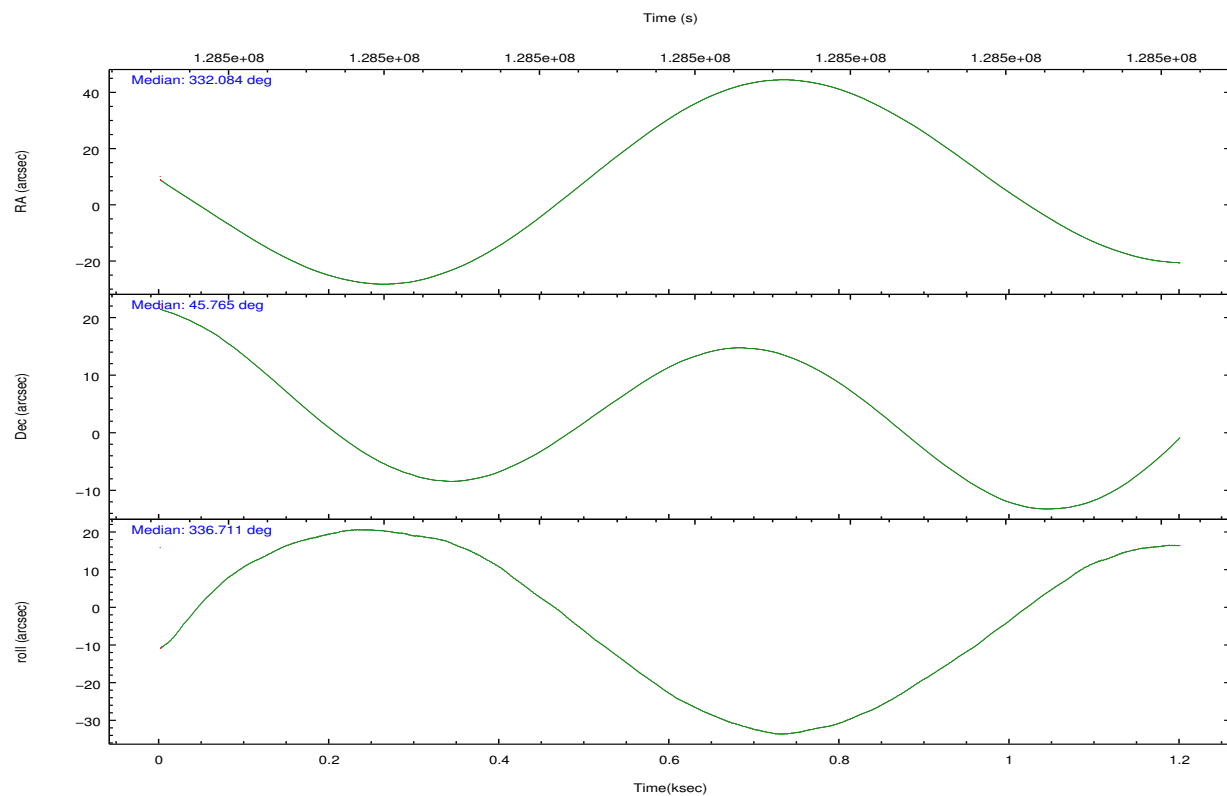
2.2 Compared Parameters

Parameter	Planned	Actual
Instrument	HRC	HRC
Detector	HRC-I	HRC-I
Grating	NONE	NONE
Data mode	OBSERVING	OBSERVING
Observation mode	POINTING	POINTING
[deg] Pointing RA	332.047875	332.0855637905088
[deg] Pointing Dec	45.761796	45.764986448155
[deg] Pointing Roll	336.839342	336.7168151192283
[mm] SIM focus pos	-1.040293	-1.038866356238299
[mm] SIM defocus	0	0.001426264420575141
[mm] SIM translation stage pos	126.985494	126.9854943052878
[mm] SIM translation stage offset	0	-5.413686238853188e-06
[s] Observation start time (MET)	128497969.184000	128497593.12805
Observation start date	2002-01-27T05:51:45	2002-01-27T05:46:33
[s] Observation end time (MET)	128498969.184000	128499103.97811
Observation end date	2002-01-27T06:08:25	2002-01-27T06:11:43

Parameter	Planned	Actual
Obspar format version number	7	7
Obspar file type	PREDICTED	ACTUAL
Obspar update status	NONE	UPDATED

2.3 Aspect



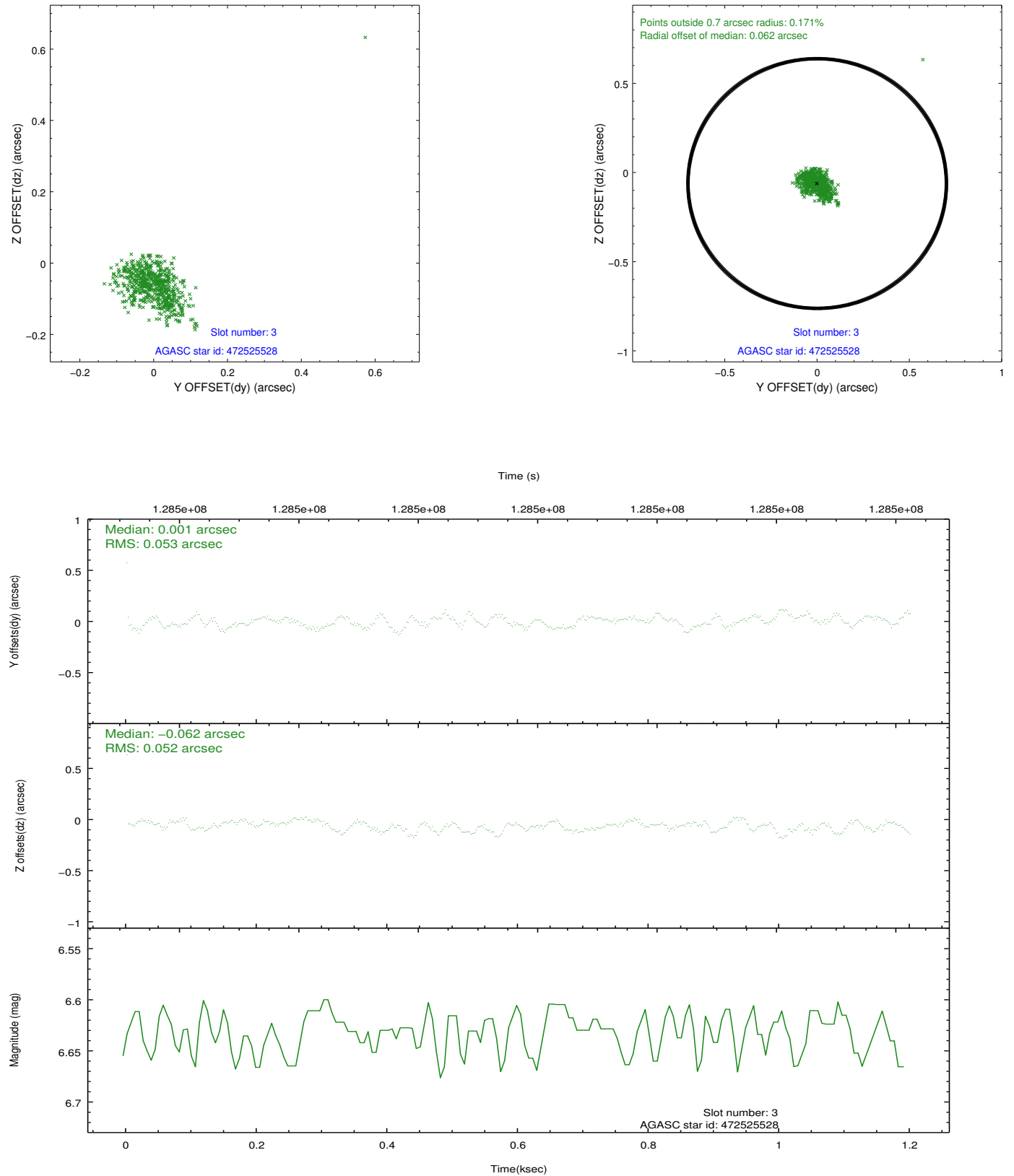


Slot Statistics

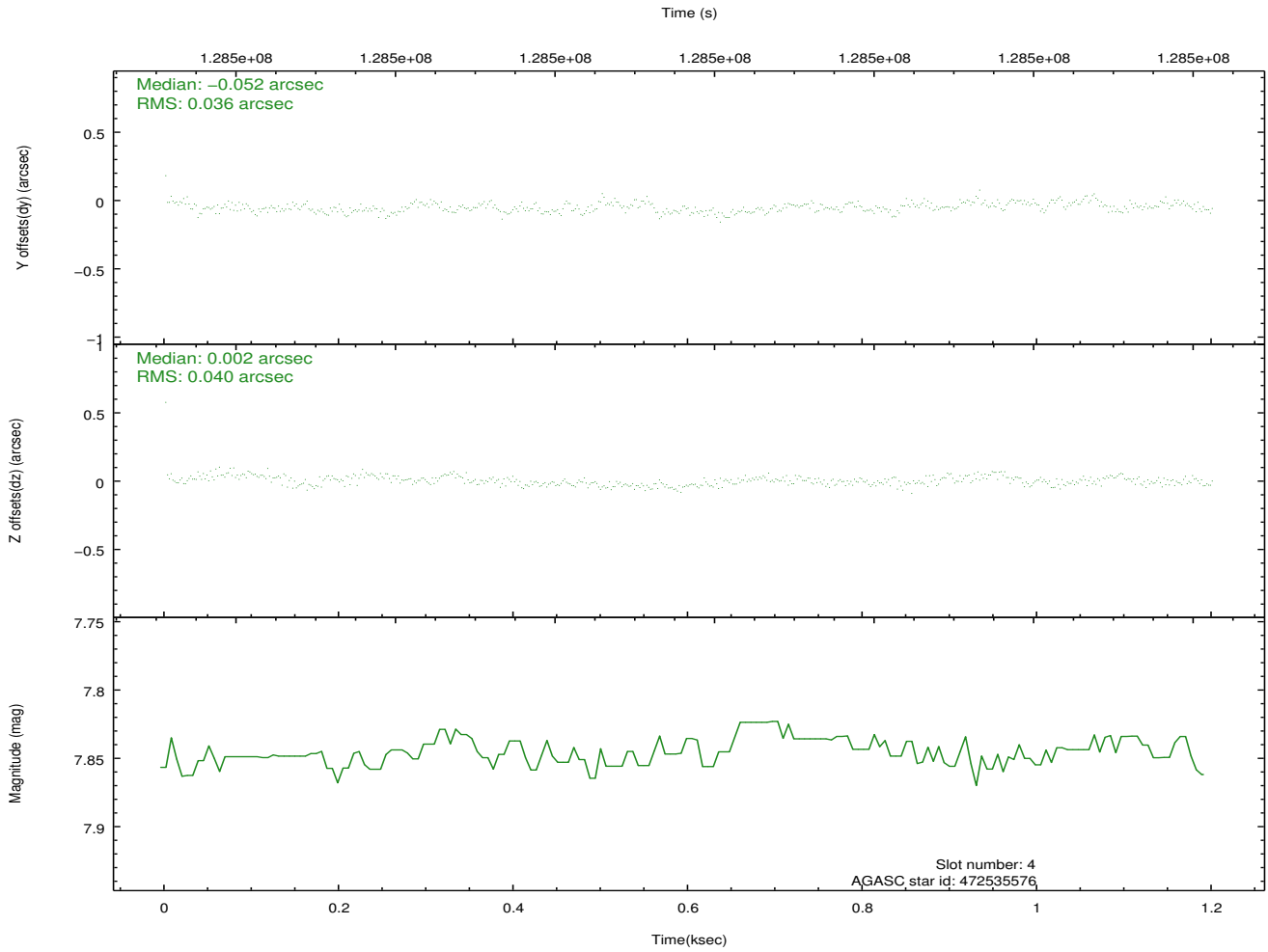
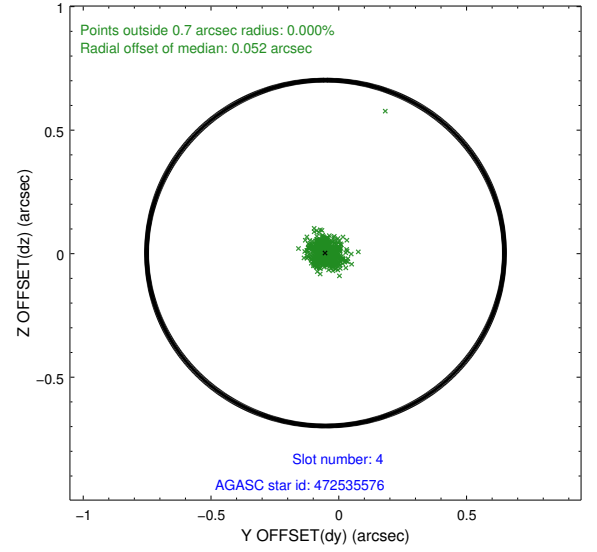
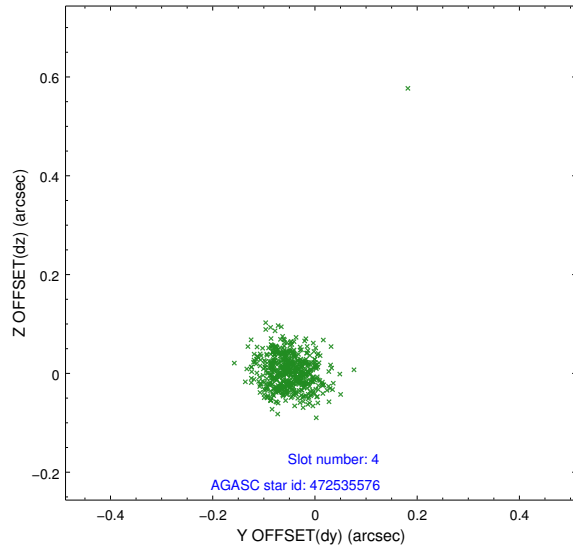
slot	status	id	mag	n_pts	med_dy	med_dz	dr1	dr2	ra	dec	mean_y	mean_z
0	FID	HRC-I-1	6.96	293	0.026	0.031	0.007	0.011	0.000000	0.000000	-759.02	-1294.81
1	FID	HRC-I-2	7.00	293	0.077	-0.071	0.005	0.010	0.000000	0.000000	851.07	-1300.88
2	FID	HRC-I-3	7.04	293	0.015	-0.049	0.005	0.010	0.000000	0.000000	-1184.64	1005.23
3	GUIDE	472525528	6.63	586	0.001	-0.062	0.068	0.109	331.551102	45.248694	-431.21	-2187.83
4	GUIDE	472535576	7.85	586	-0.052	0.002	0.050	0.082	331.438373	46.291802	-2146.46	1161.52
5	GUIDE	472536328	8.12	586	-0.061	0.066	0.063	0.106	331.496671	46.454831	-2242.84	1764.58
6	GUIDE	472659832	9.46	585	0.074	0.045	0.107	0.171	332.780399	46.098139	1198.98	1845.65
7	GUIDE	472654568	9.44	585	0.047	-0.049	0.111	0.202	332.194449	45.063576	1334.71	-2158.67

2.4 Star Slots

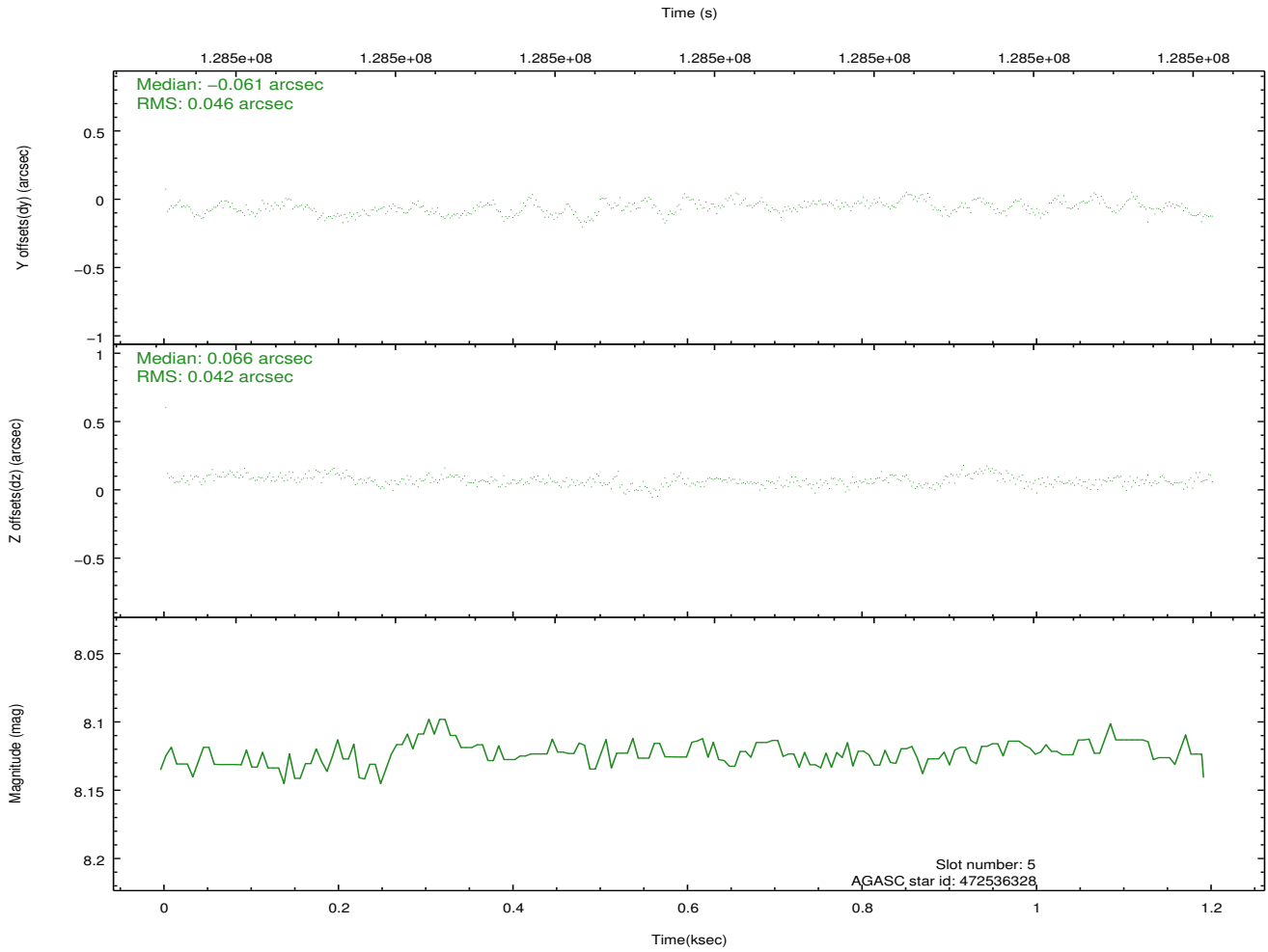
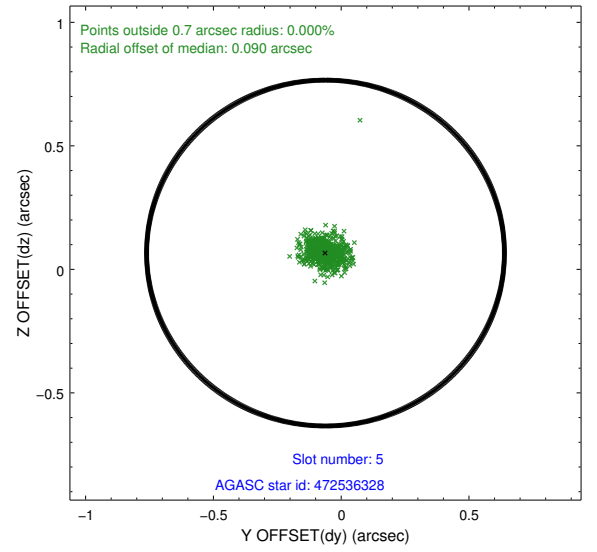
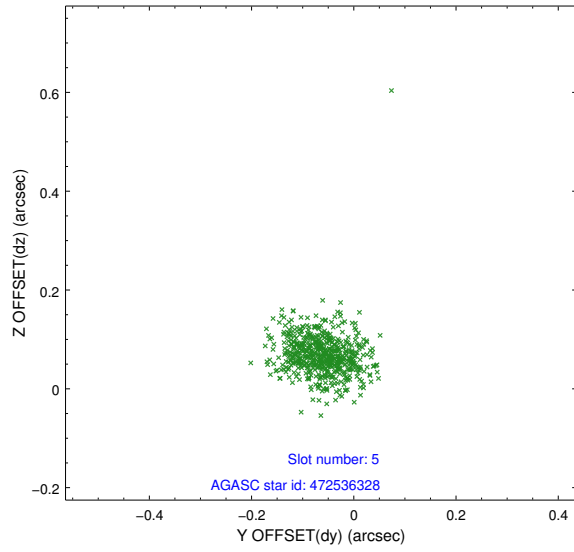
2.4.1 Slot 3



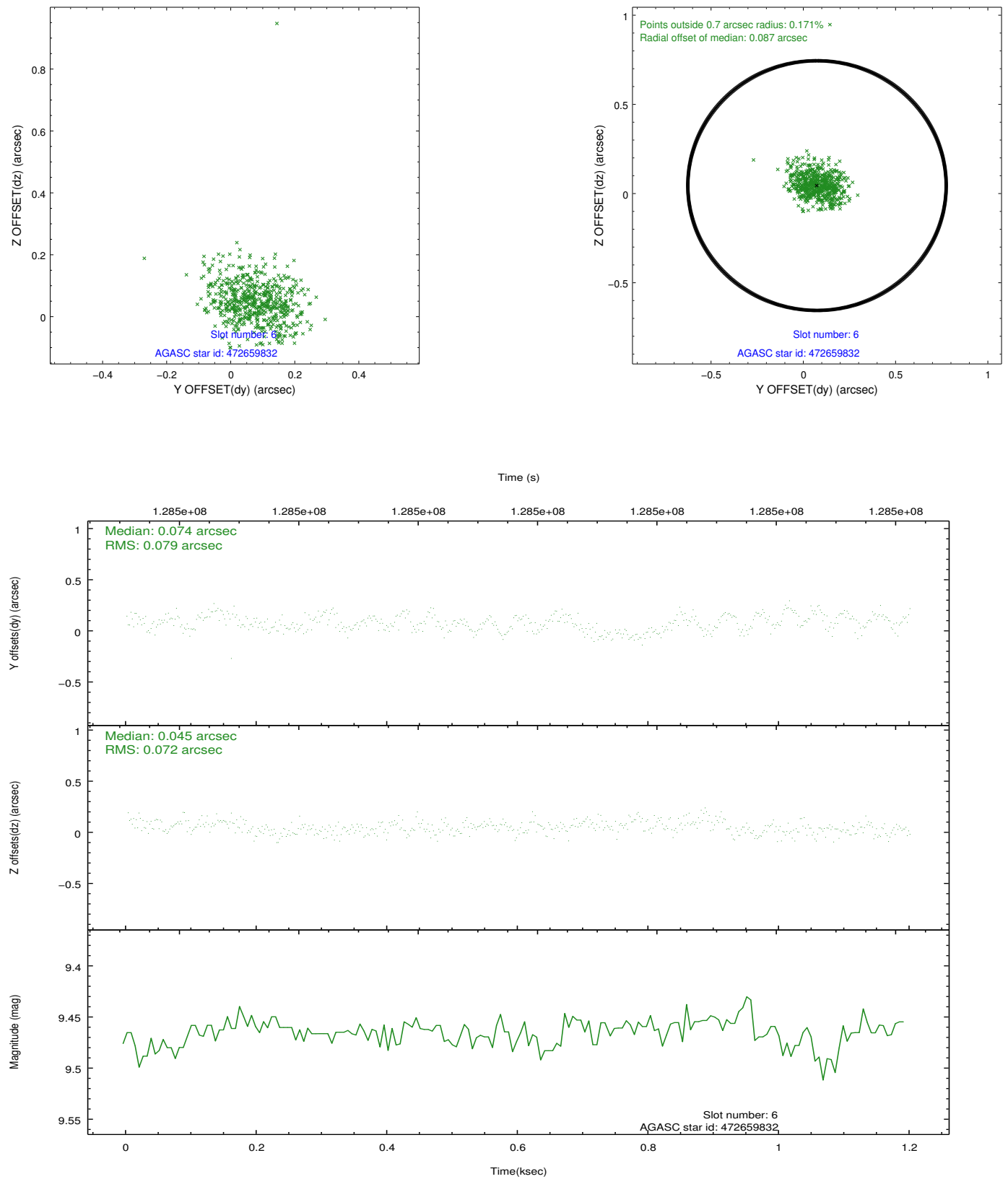
2.4.2 Slot 4



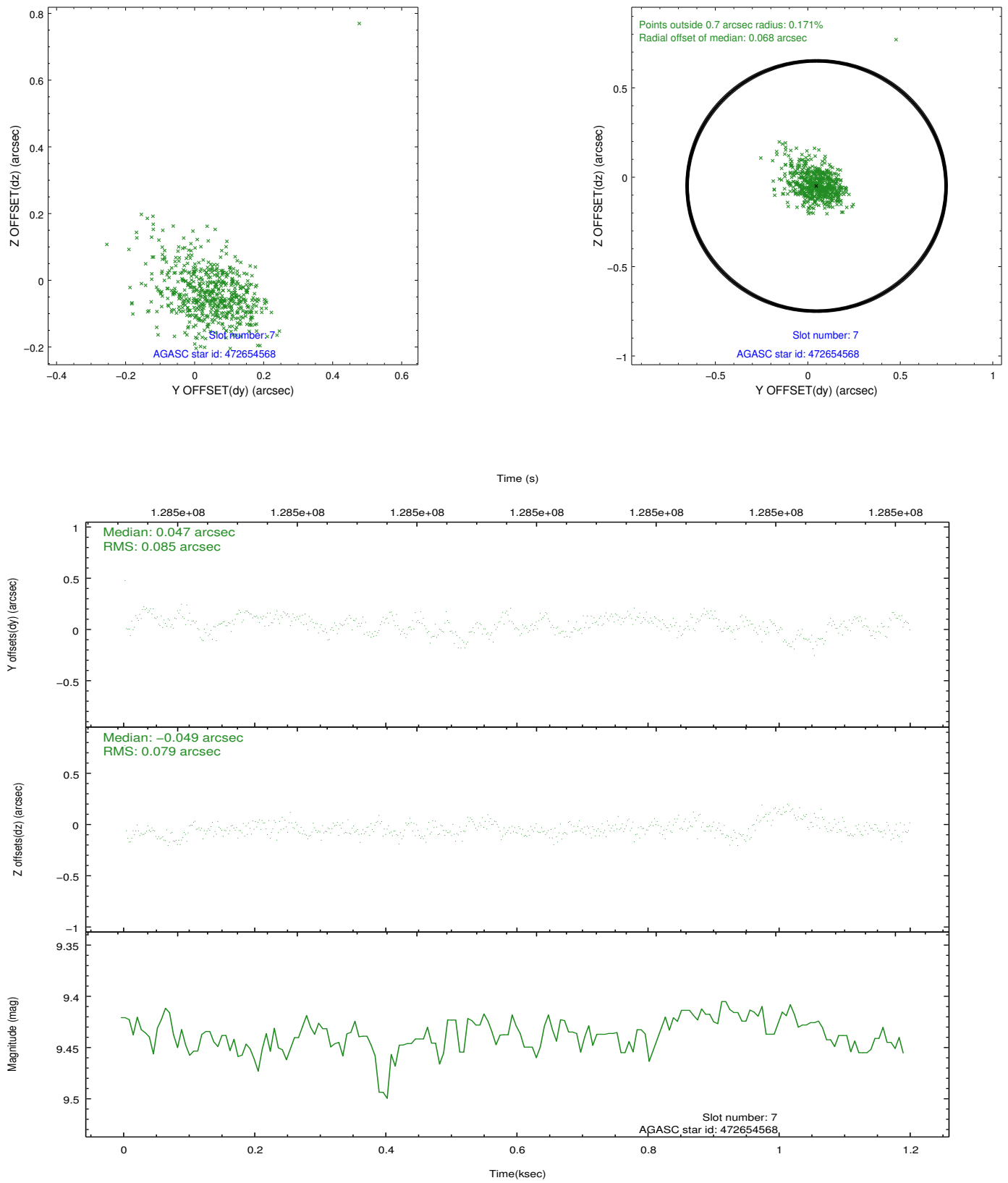
2.4.3 Slot 5



2.4.4 Slot 6

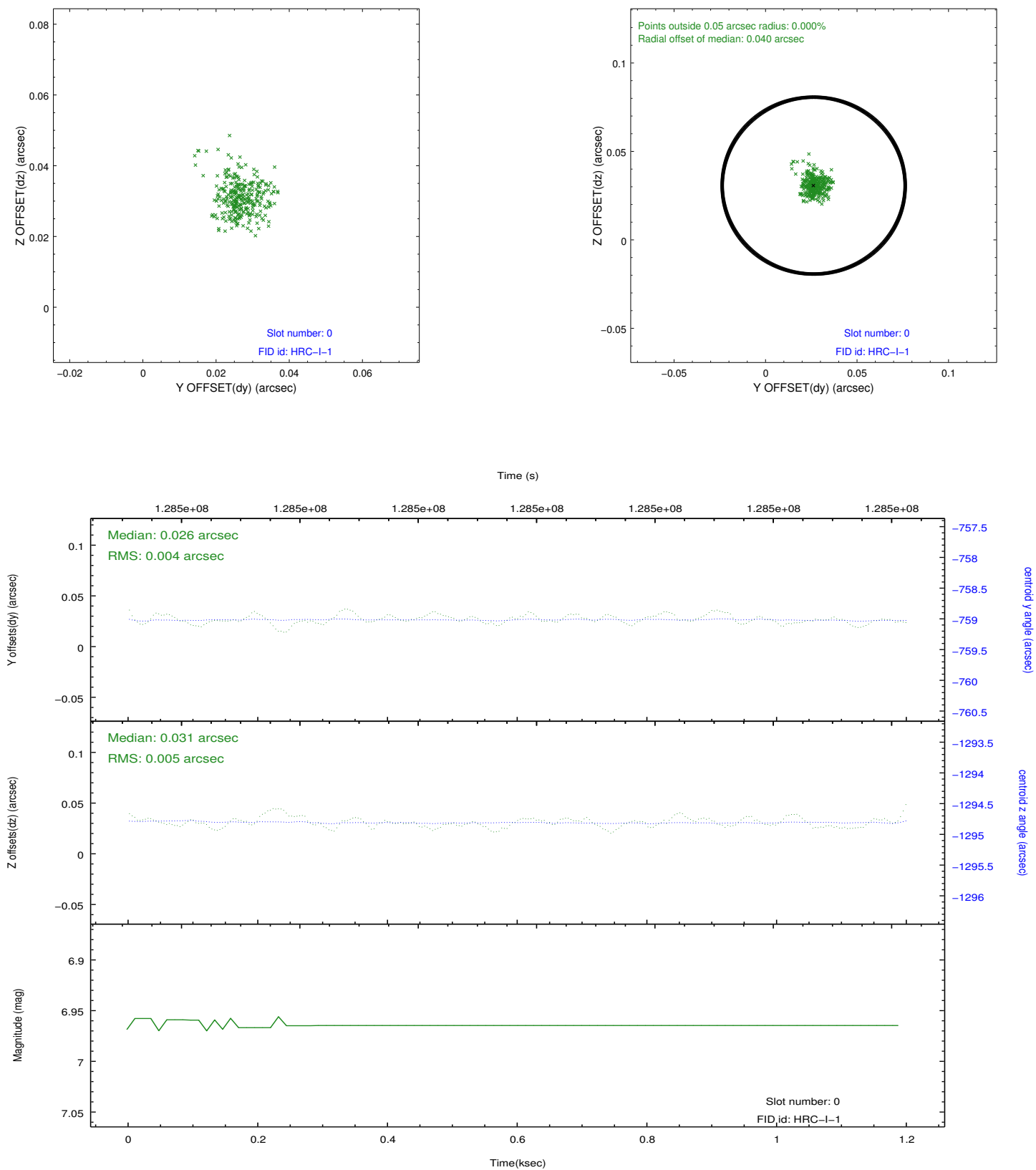


2.4.5 Slot 7

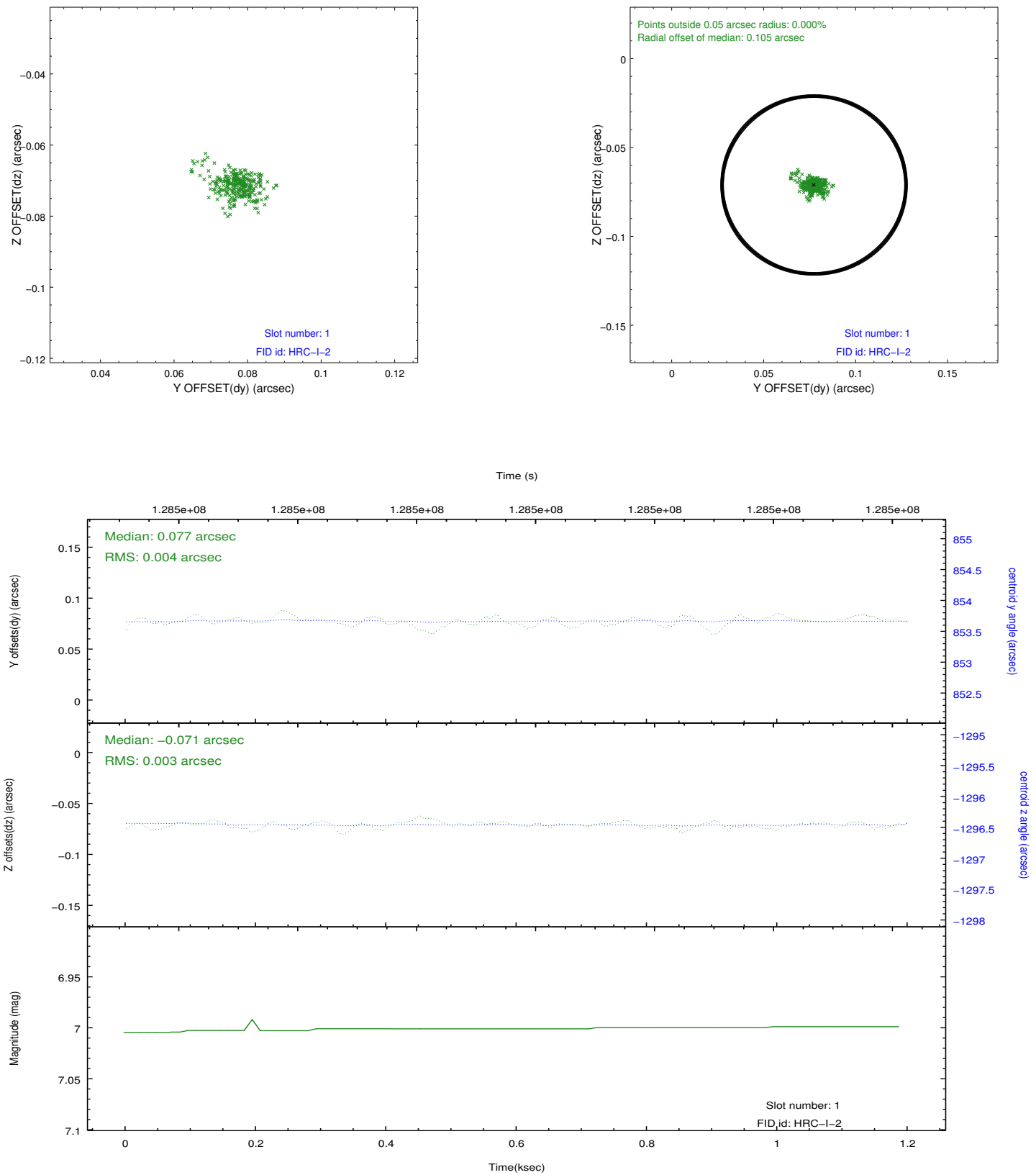


2.5 FID Slots

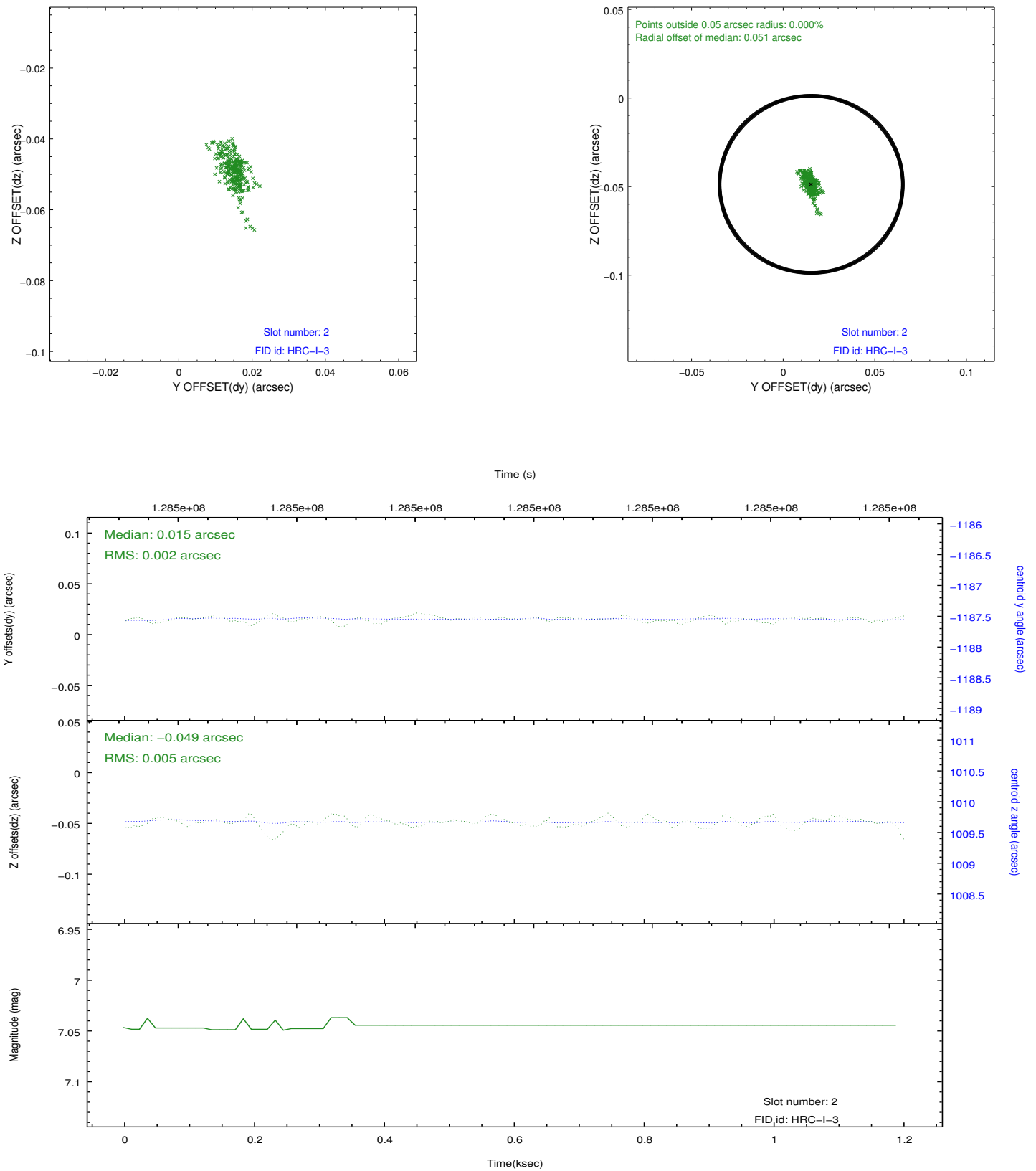
2.5.1 Slot 0



2.5.2 Slot 1



2.5.3 Slot 2



A Summary

A.1 Status

V&V Scientist	Jen Lauer
V&V Date (YYYY-MM-DD)	2012.10.02
V&V Edition	1
V&V Disposition and Status	OK
V&V Charge Time	1.196

A.2 Comments