

V&V Reference Report

L2 ASCDS Version : 7.6.9

Observation 2450 - L2 Version 001
Chandra X-Ray Center

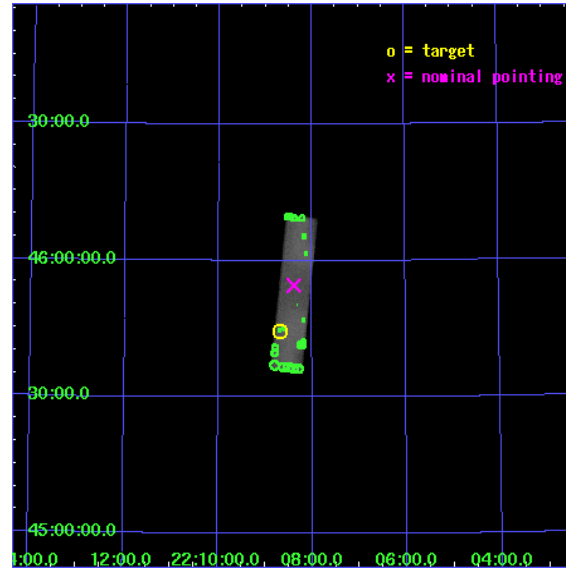
L2 Processing Date : Nov 21 2006

Contents

1	Front	2
2	OBI	3
2.1	OBI	3
2.1.1	Images	3
2.1.2	Parameters	4
2.1.3	Events	4
2.2	Compared Parameters	5
2.3	Aspect	6
2.4	Star Slots	9
2.4.1	Slot 3	9
2.4.2	Slot 4	10
2.4.3	Slot 5	11
2.4.4	Slot 6	12
2.4.5	Slot 7	13
2.5	FID Slots	14
2.5.1	Slot 0	14
2.5.2	Slot 1	15
2.5.3	Slot 2	16
3	Point Sources	17
A	Summary	18
A.1	Status	18
A.2	Comments	18

1 Front

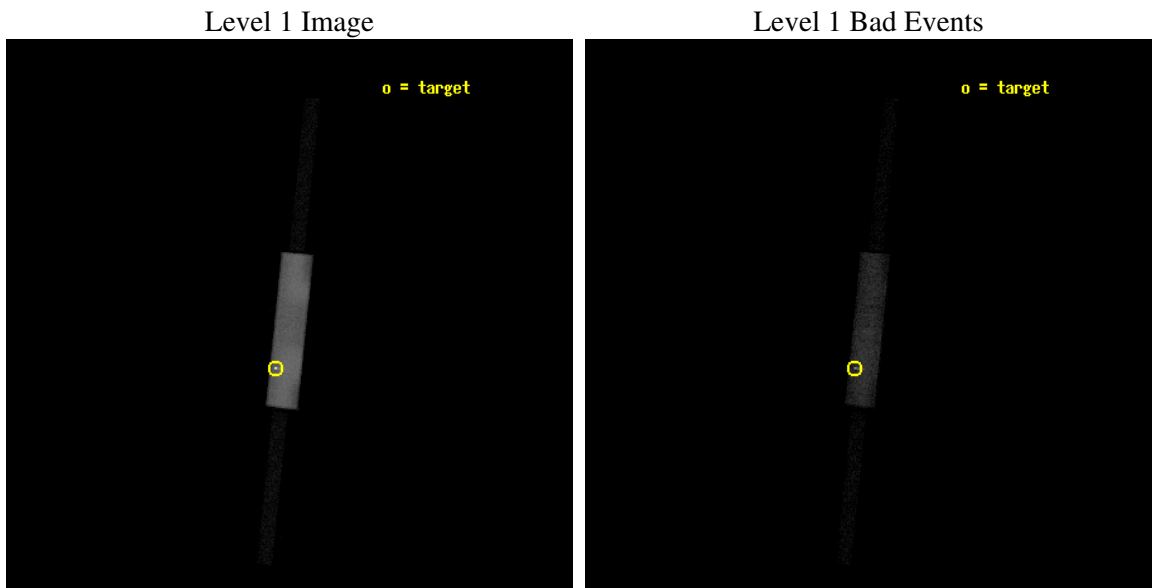
seq_num	290078
obs_id	2450
title	HRC-S CALIBRATION OBSERVATIONS OF ARLAC
observer	Dr. CXC Calibration
object	ARLAC
ra_targ	332.17
dec_targ	45.742306
ra_nom	332.09705790871
dec_nom	45.909698606473
roll_nom	95.91134866998
revision	4
ontime	1374.781303376
livetime	1354.1230331734
l2events	151936



2 OBI

2.1 OBI

2.1.1 Images



2.1.2 Parameters

obi_num	0
ascdsver	7.6.9
caldbver	3.2.4
date	2006-11-21T15:49:06
revision	3

sched_exp_time	1234.000000
ontime	1424.7500553429
l1events	217760

2.1.3 Events

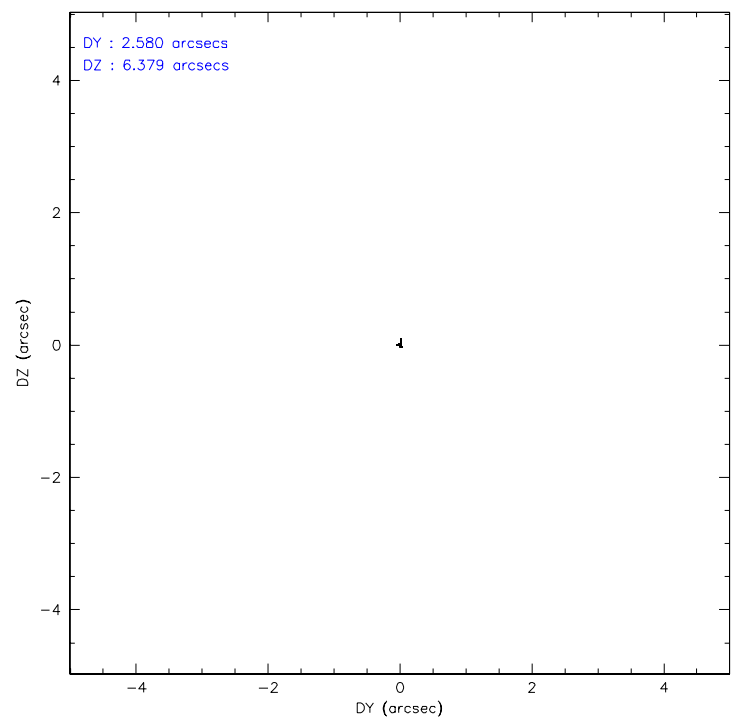
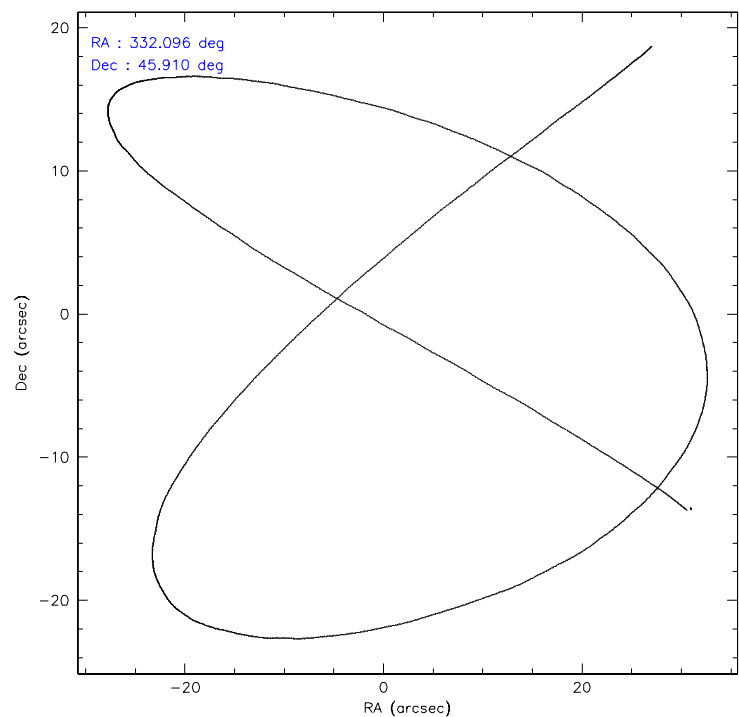
Level 1 Events

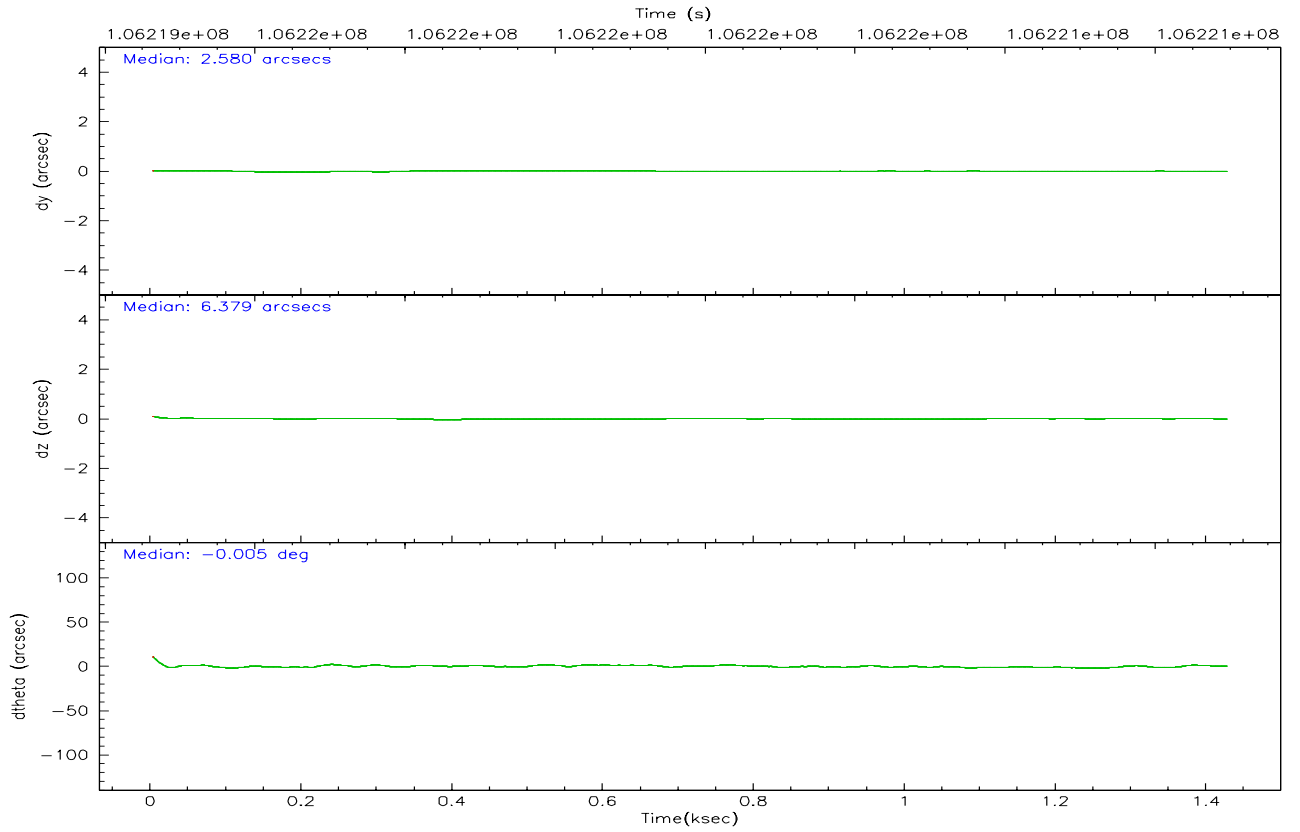
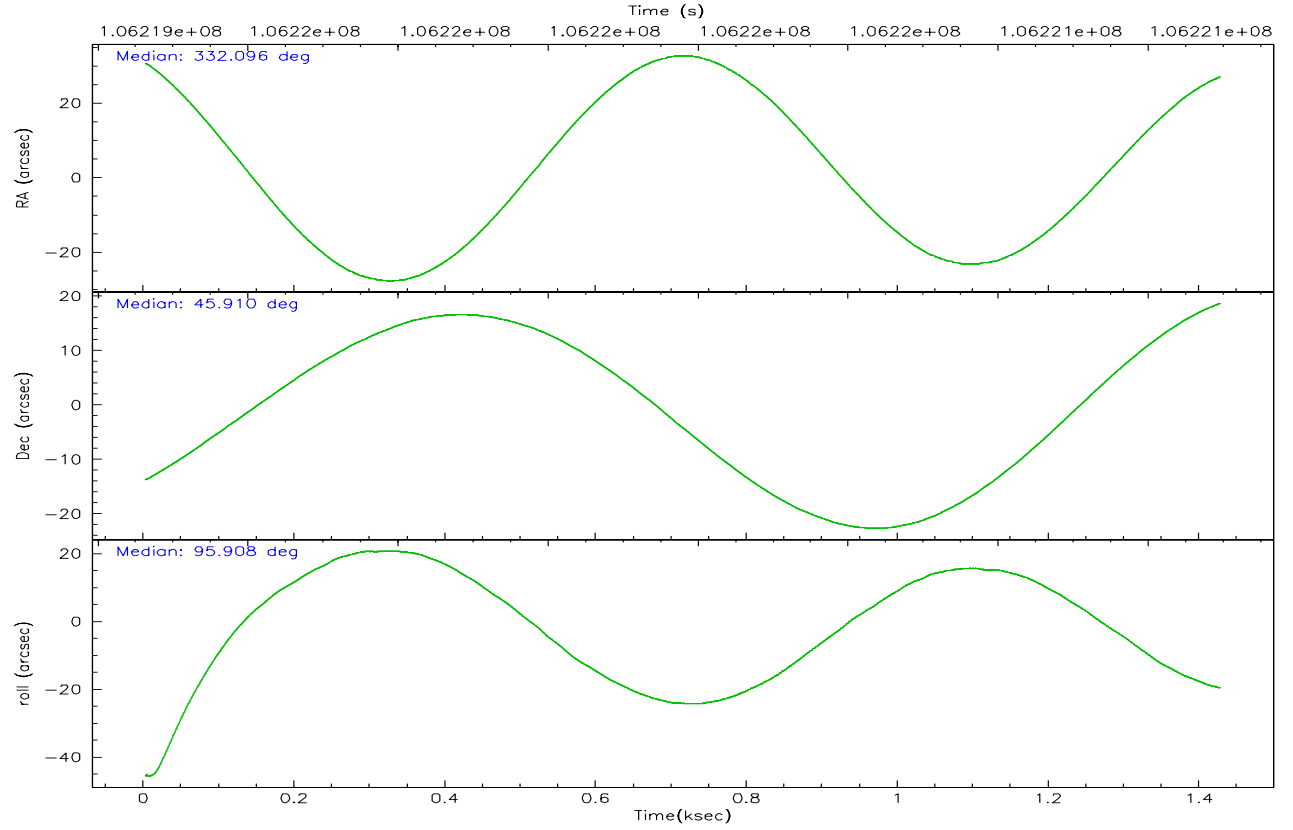
	segment 1	segment 2	segment 3
level 1 events	3609	211125	3026
rejected events	3609	54995	3026
rejected %	100%	26%	100%

2.2 Compared Parameters

Parameter	Planned	Actual	Parameter	Planned	Actual
Instrument	HRC	HRC	Obspar format version number	6	6
Detector	HRC-S	HRC-S	Obspar file type	PREDICTED	ACTUAL
Grating	NONE	NONE	Obspar update status	NONE	UPDATED
Data mode	OBSERVING	OBSERVING			
Observation mode	POINTING	POINTING			
Pointing RA	332.123381	332.0970579087105			
Pointing Dec	45.887092	45.90969860647341			
Pointing Roll	95.825366	95.91134866998013			
SIM focus pos (mm)	-1.429586	-1.428180813131781			
SIM defocus (mm)	0.1037507710433287	0.1051558262725154			
SIM translation stage pos (mm)	250.455976	250.466033080201			
SIM translation stage offset (mm)	0	-0.01005468664627074			
Observation start time	106219659.184000	106219282.8464			
Observation start date	2001-05-14T09:26:35	2001-05-14T09:21:22			
Observation end time	106220893.184000	106221026.88397			
Observation end date	2001-05-14T09:47:09	2001-05-14T09:50:26			

2.3 Aspect



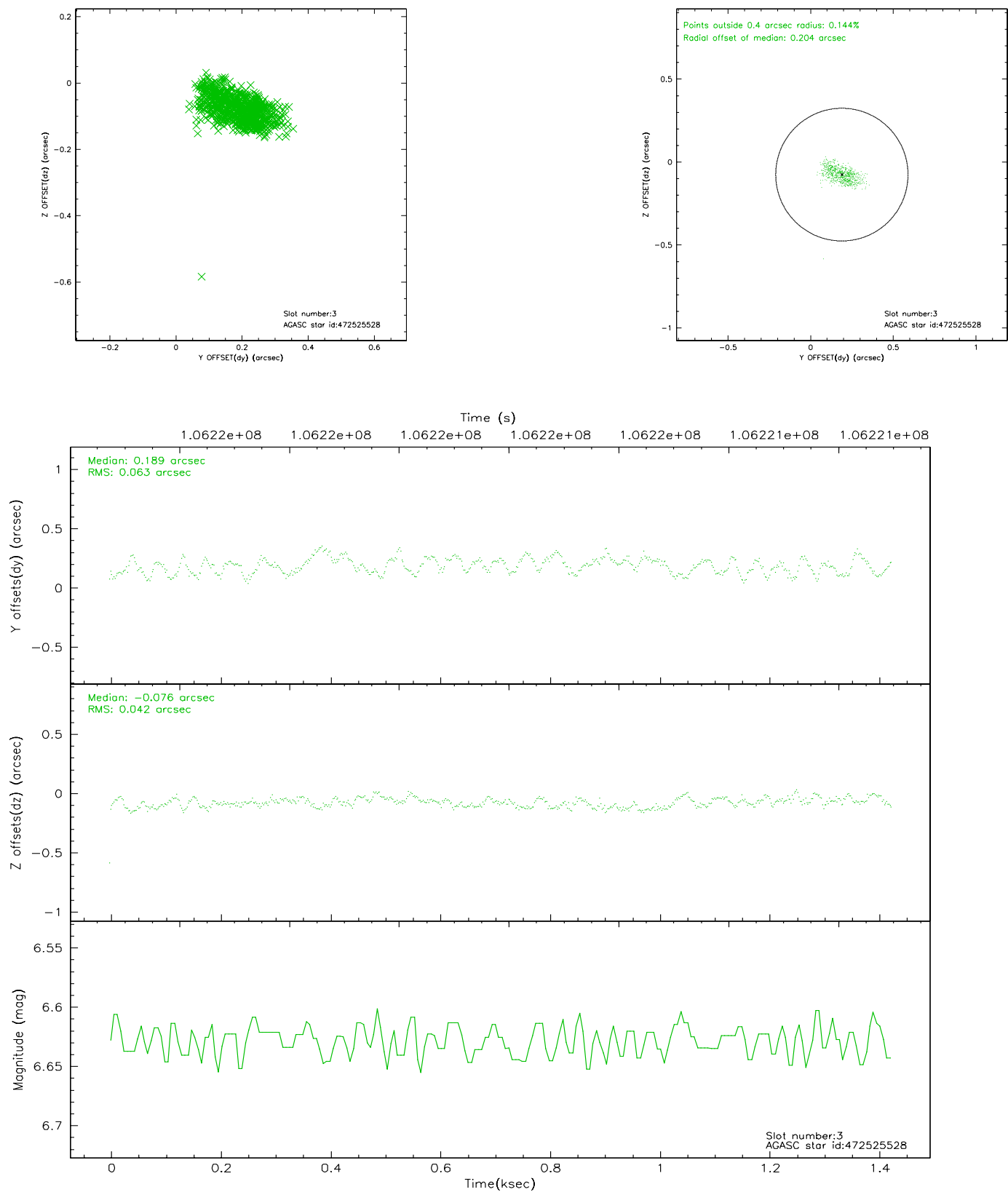


Slot Statistics

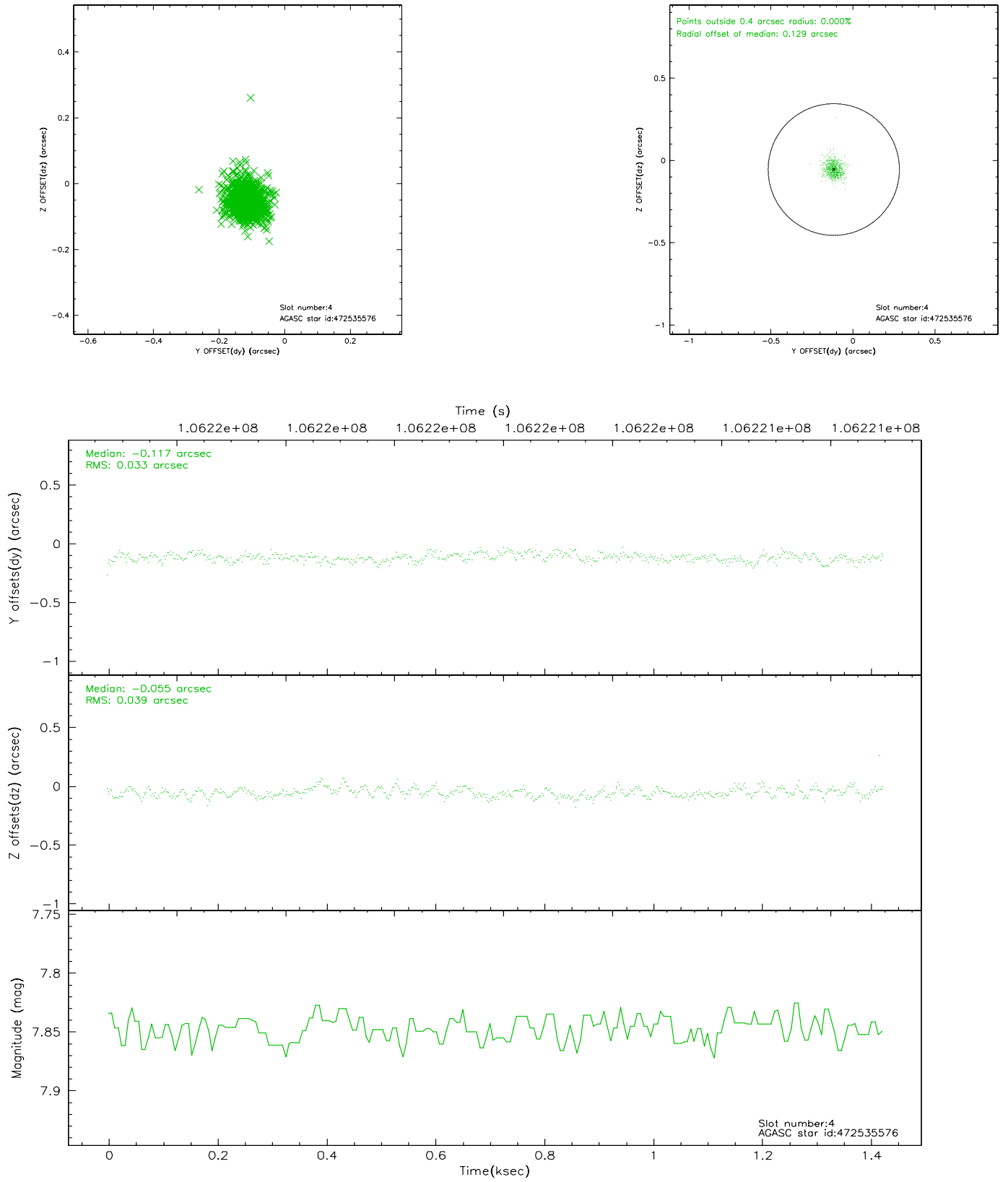
slot	status	id	mag	n_pts	med_dy	med_dz	dr1	dr2	ra	dec	mean_y	mean_z
0	FID	HRC-S-1	6.97	347	0.108	-0.106	0.006	0.010	0.000000	0.000000	-1156.62	-454.93
1	FID	HRC-S-3	7.00	347	0.152	-0.100	0.006	0.011	0.000000	0.000000	-1162.66	573.29
2	FID	HRC-S-4	6.94	348	0.128	-0.091	0.004	0.008	0.000000	0.000000	1238.28	578.90
3	GUIDE	472525528	6.63	696	0.189	-0.076	0.078	0.128	331.551102	45.248694	-2135.07	1673.15
4	GUIDE	472535576	7.85	696	-0.117	-0.055	0.052	0.088	331.438373	46.291802	1625.31	1546.68
5	GUIDE	472536328	8.13	696	-0.180	-0.021	0.048	0.077	331.496671	46.454831	2198.15	1338.26
6	GUIDE	472523760	8.24	696	0.112	0.075	0.059	0.092	331.645363	45.403260	-1604.53	1377.96
7	GUIDE	472663088	9.03	695	-0.014	0.076	0.097	0.158	332.931735	46.600119	2357.68	-2251.02

2.4 Star Slots

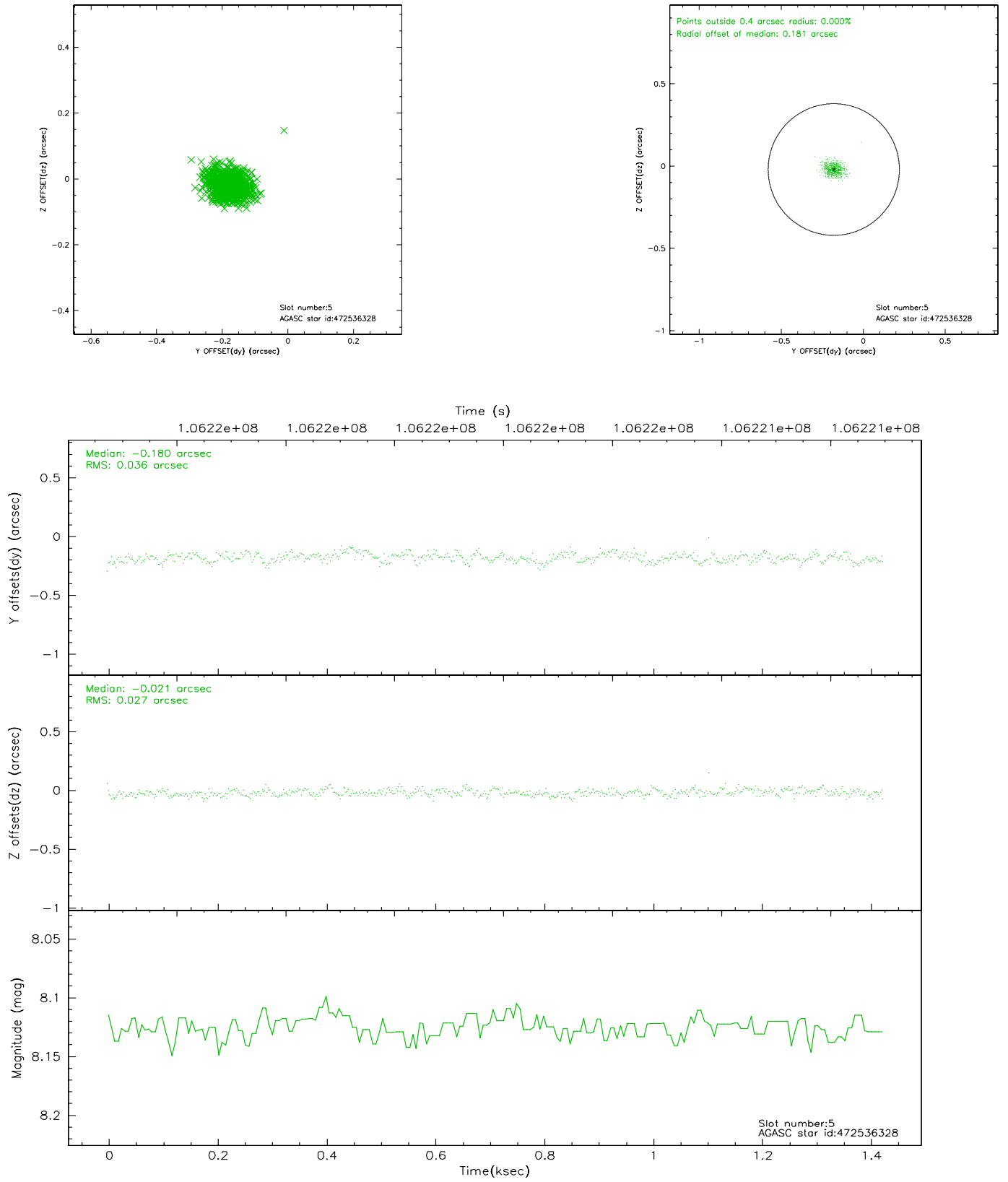
2.4.1 Slot 3



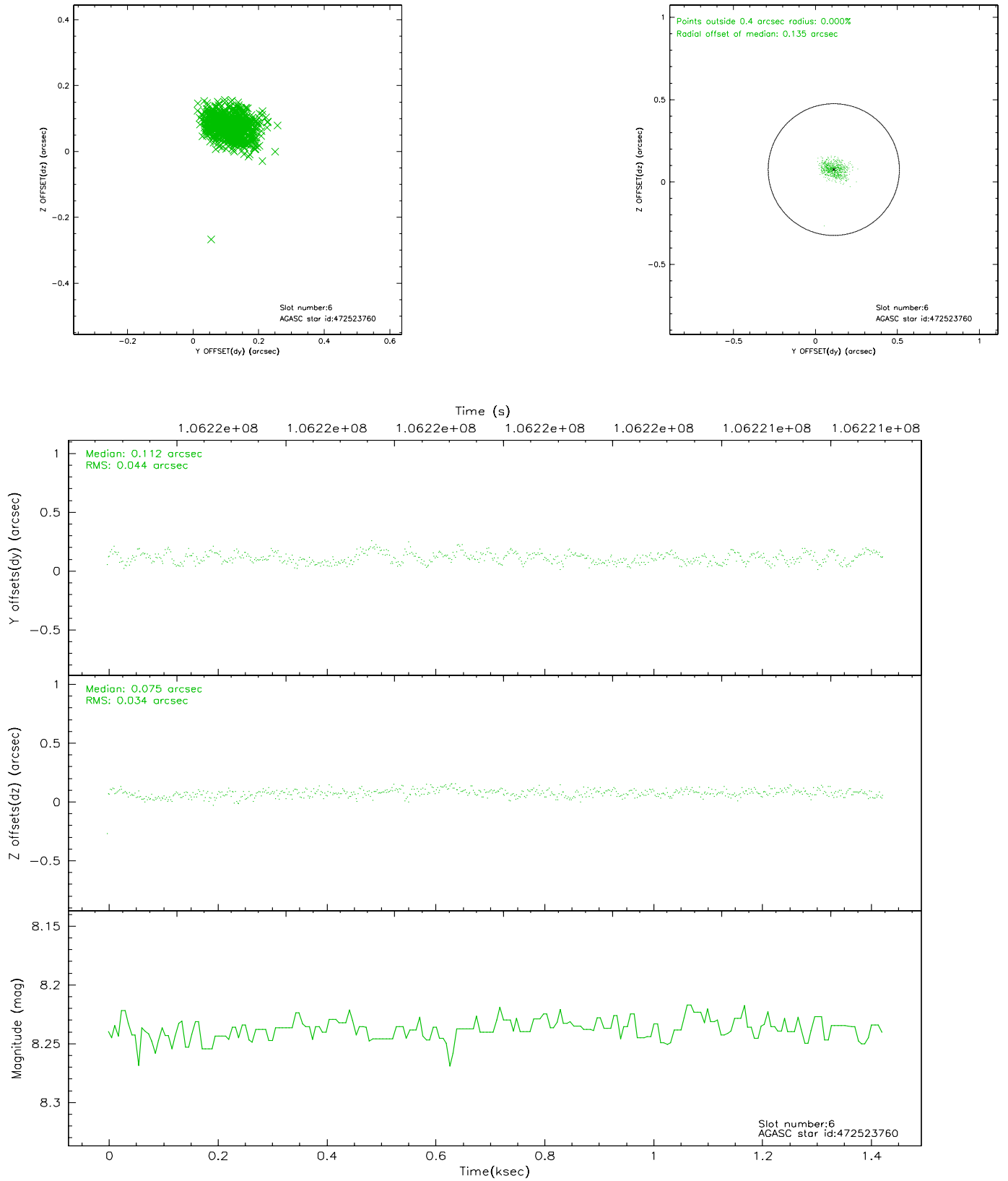
2.4.2 Slot 4



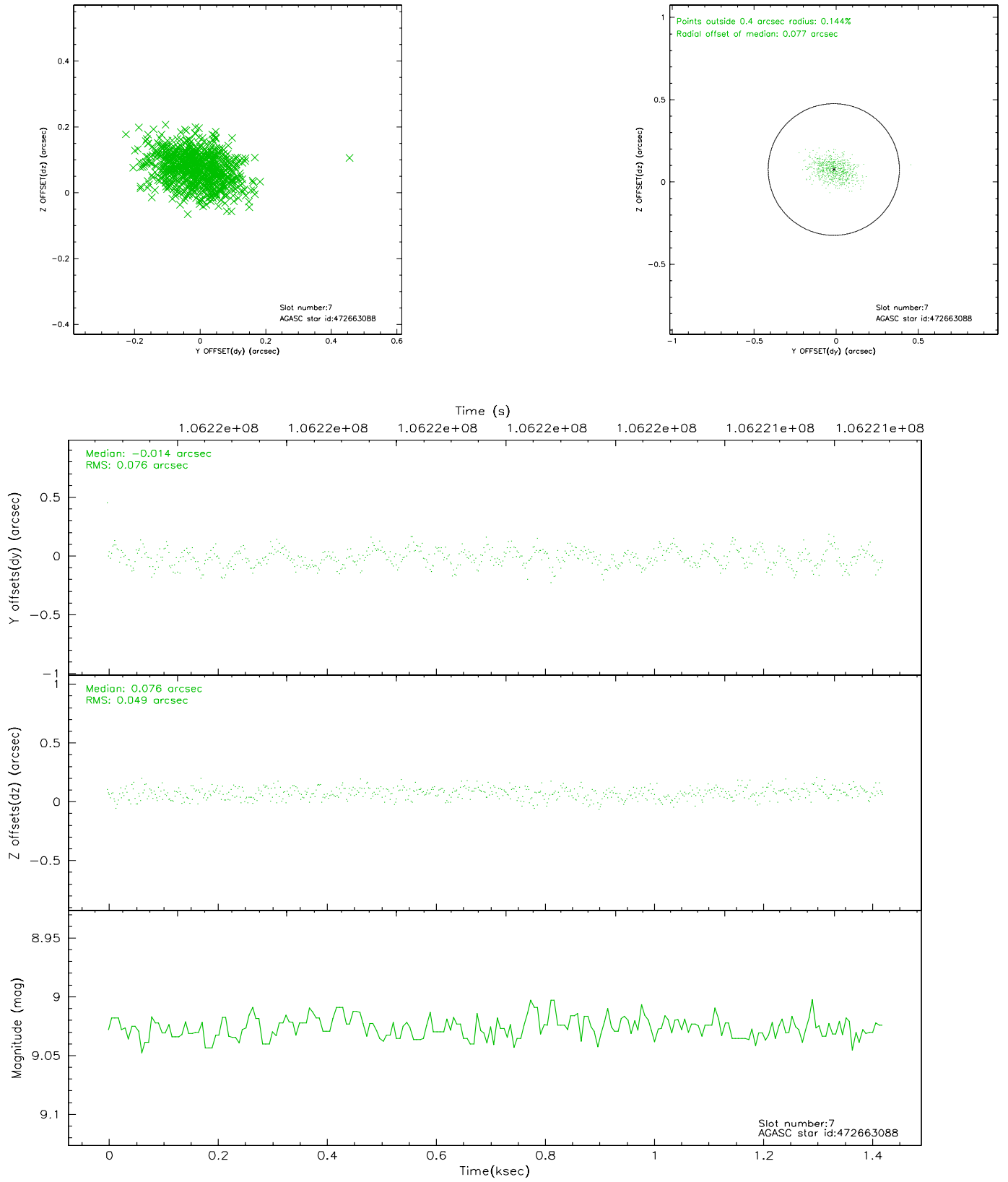
2.4.3 Slot 5



2.4.4 Slot 6

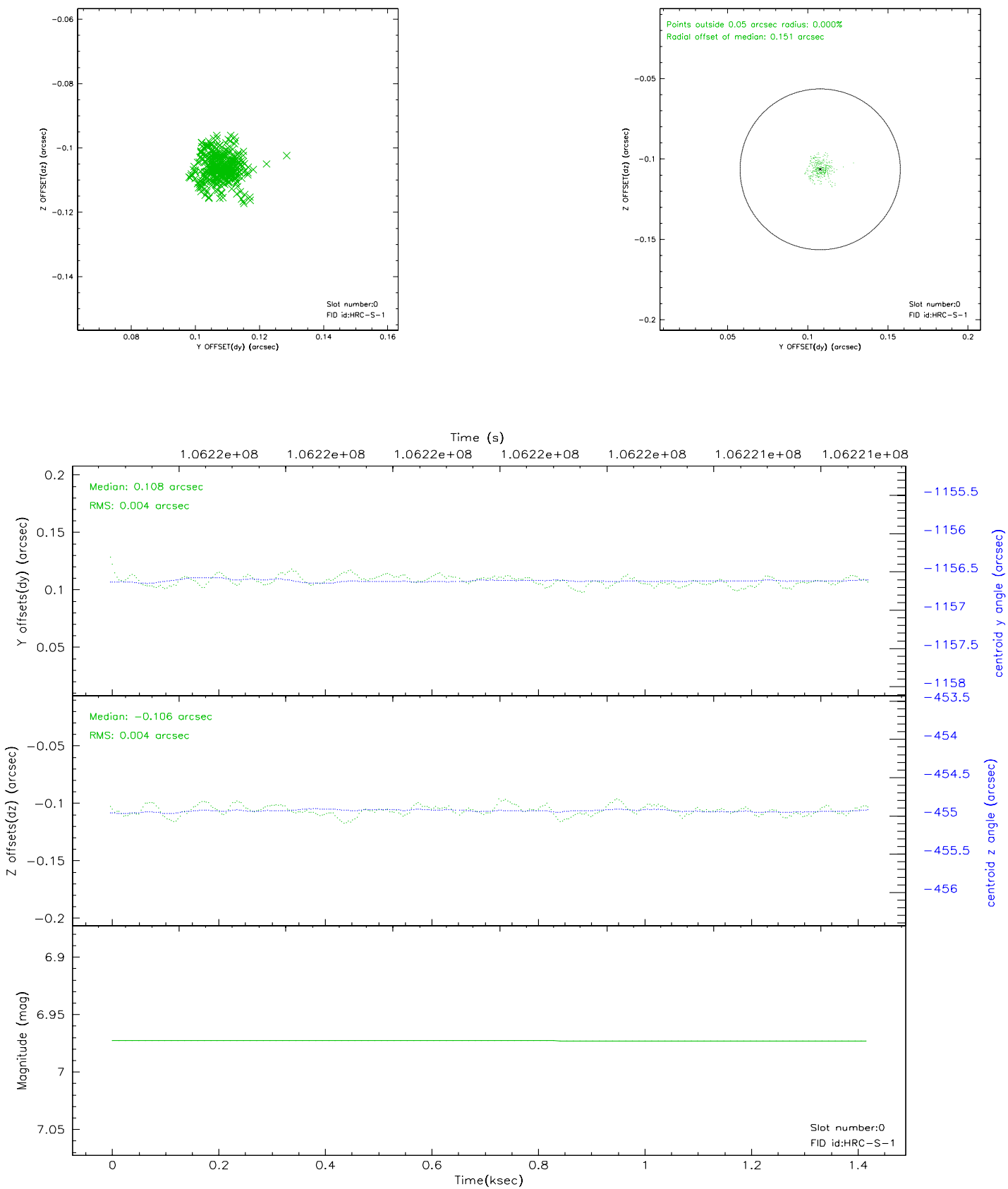


2.4.5 Slot 7

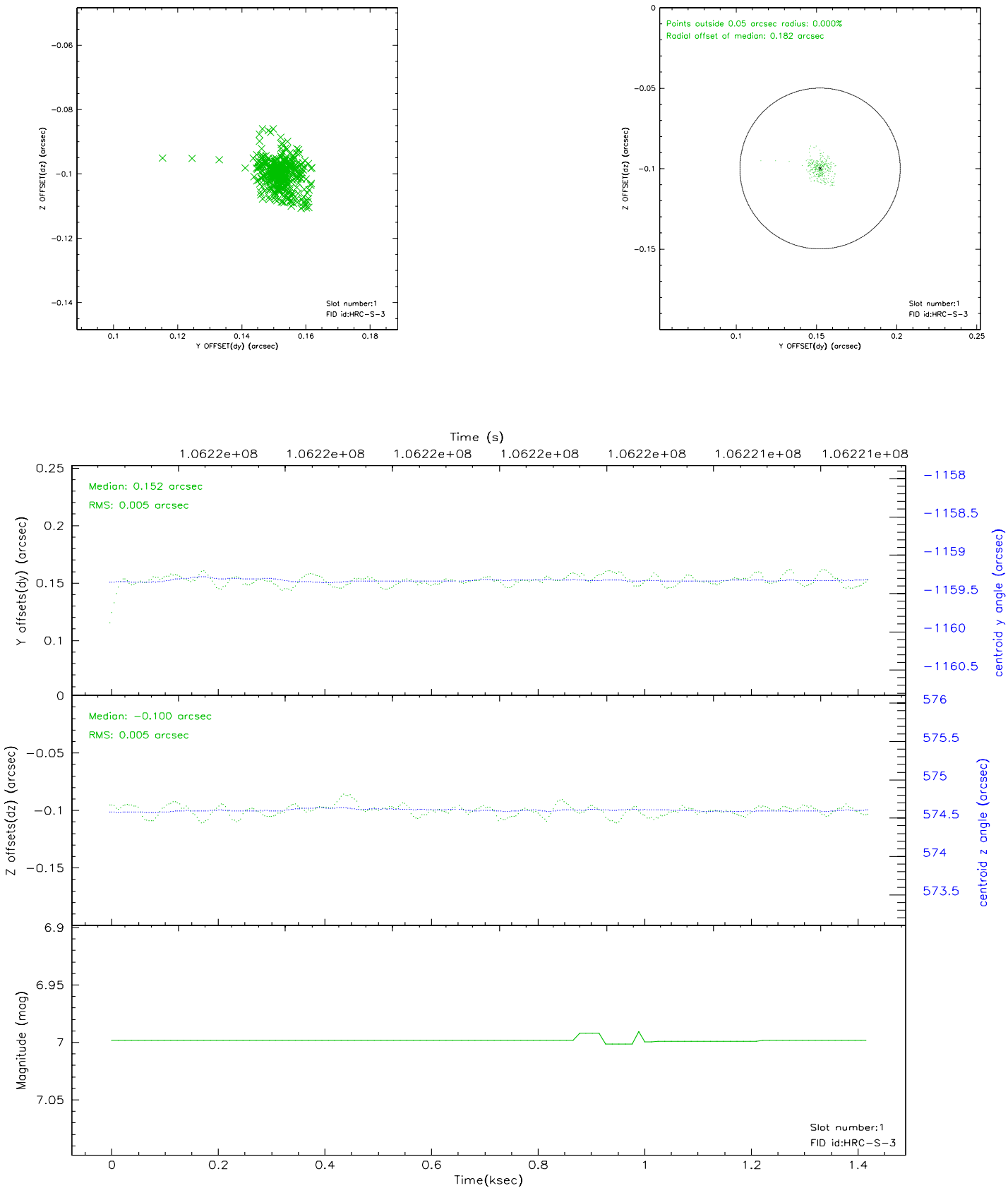


2.5 FID Slots

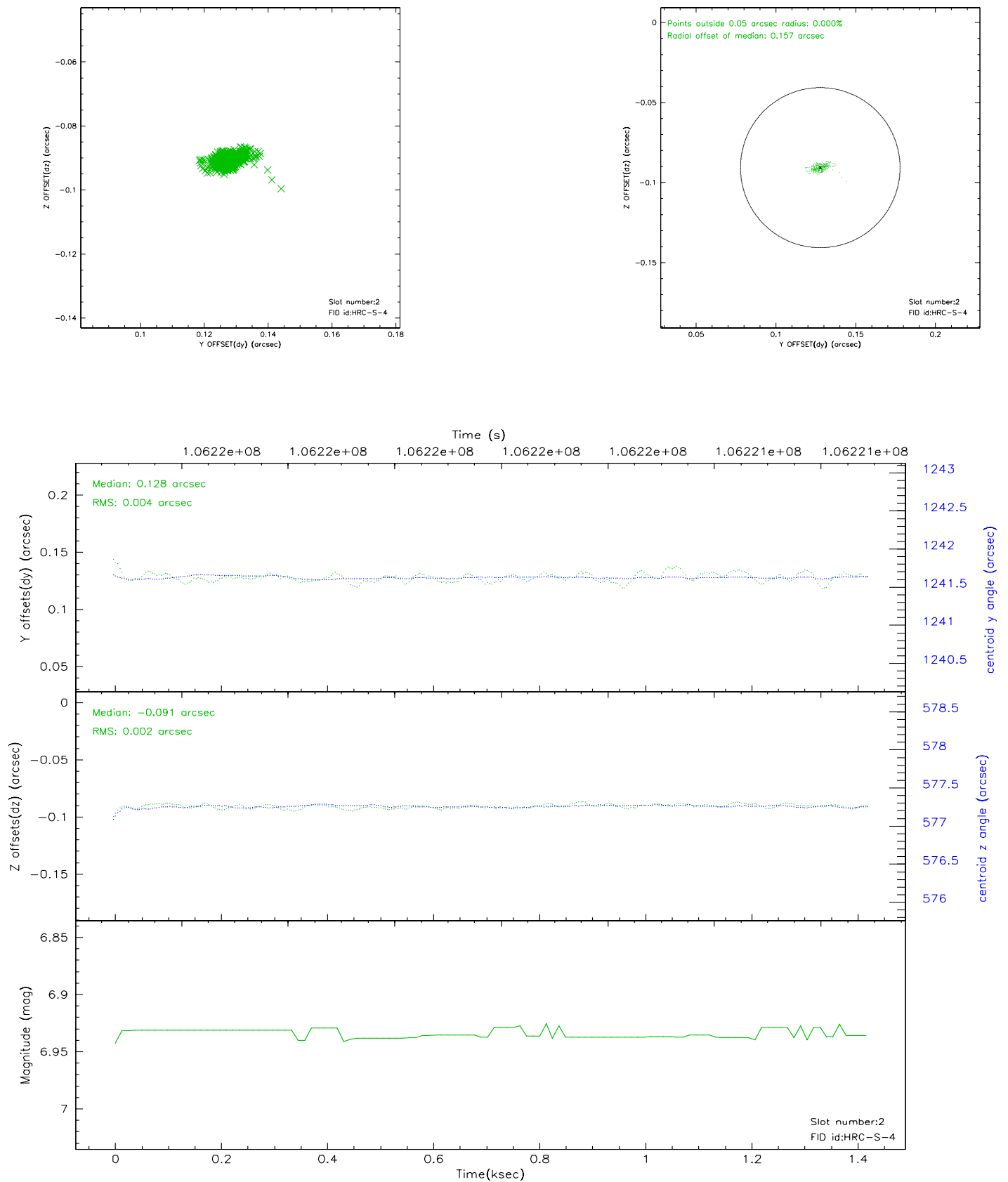
2.5.1 Slot 0



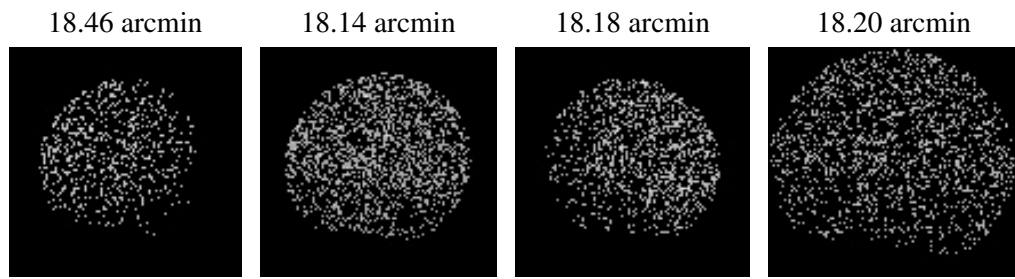
2.5.2 Slot 1



2.5.3 Slot 2



3 Point Sources



A Summary

A.1 Status

V&V Scientist	Jen Lauer
V&V Date (YYYY-MM-DD)	2006.11.21
V&V Edition	1
V&V Disposition and Status	OK
V&V Charge Time	1.413

A.2 Comments

The target is off axis and away from the aimpoint, and therefore extended and asymmetric.