

V&V Reference Report

L2 ASCDS Version : 7.6.9

Observation 2430 - L2 Version 3
Chandra X-Ray Center

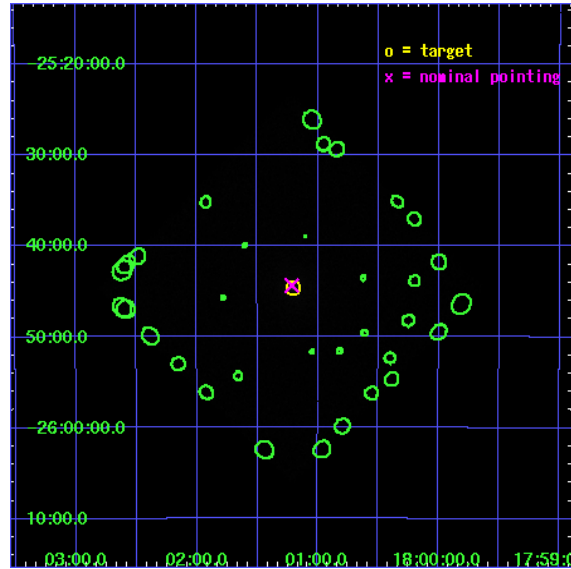
L2 Processing Date : Nov 21 2007

Contents

1	Front	2
2	OBI	3
2.1	OBI	3
2.1.1	Images	3
2.1.2	Parameters	4
2.1.3	Events	4
2.2	Compared Parameters	5
2.3	Aspect	6
2.4	Star Slots	9
2.4.1	Slot 3	9
2.4.2	Slot 4	10
2.4.3	Slot 5	11
2.4.4	Slot 6	12
2.4.5	Slot 7	13
2.5	FID Slots	14
2.5.1	Slot 0	14
2.5.2	Slot 1	15
2.5.3	Slot 2	16
3	Point Sources	17
A	Summary	18
A.1	Status	18
A.2	Comments	18

1 Front

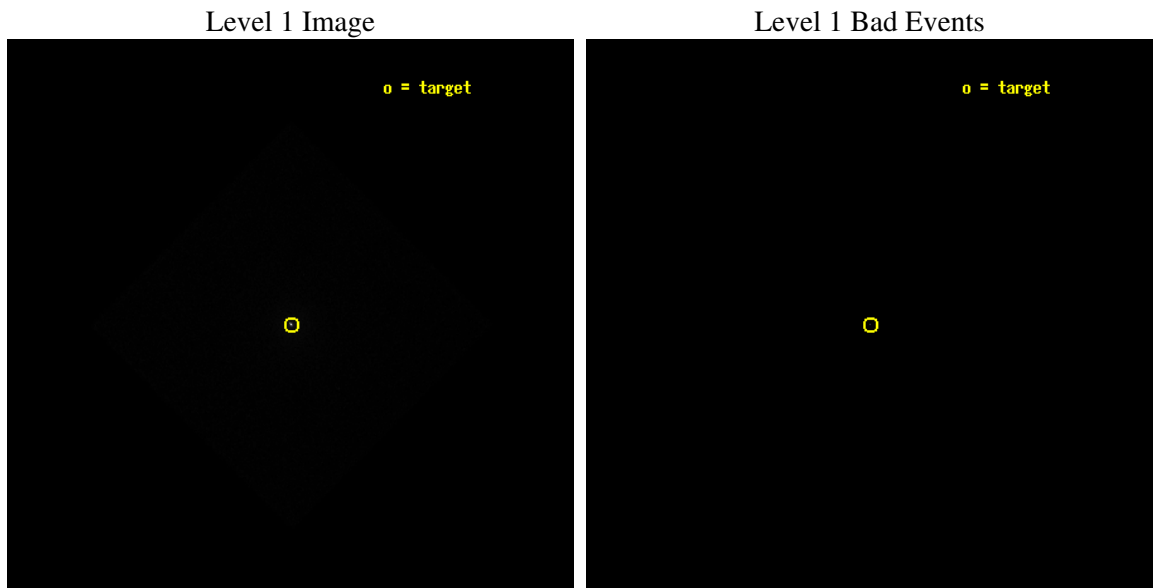
seq_num	400164
obs_id	2430
title	HIGH RESOLUTION SPECTROSCOPY OF THE POSSIBLE JETS IN GRS 1758-258
observer	Dr. William Heindl
object	GRS 1758-258
ra_targ	270.301667
dec_targ	-25.743306
ra_nom	270.30344557218
dec_nom	-25.739373544697
roll_nom	89.84274559196
revision	3
ontime	9895.3503833413
livetime	9837.8939127985
l2events	352066



2 OBI

2.1 OBI

2.1.1 Images



2.1.2 Parameters

obi_num	0
ascdsver	7.6.11.2
caldbver	3.4.1
date	2007-11-21T09:25:34
revision	3

sched_exp_time	10000.000000
ontime	9897.4003833383
l1events	487057

2.1.3 Events

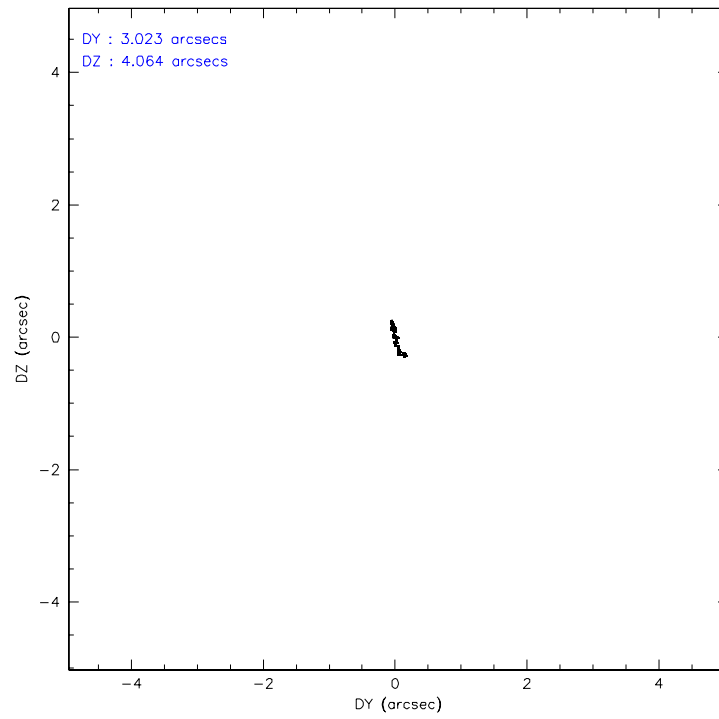
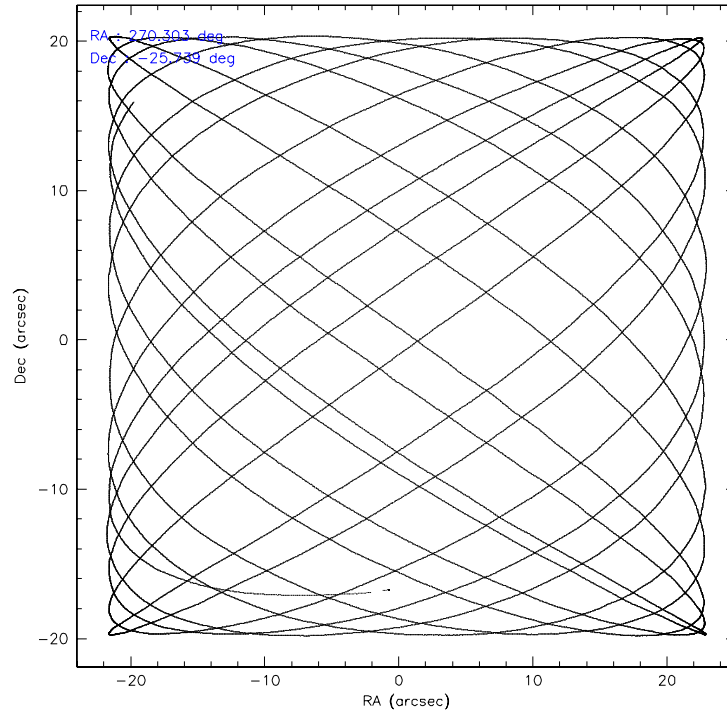
Level 1 Events

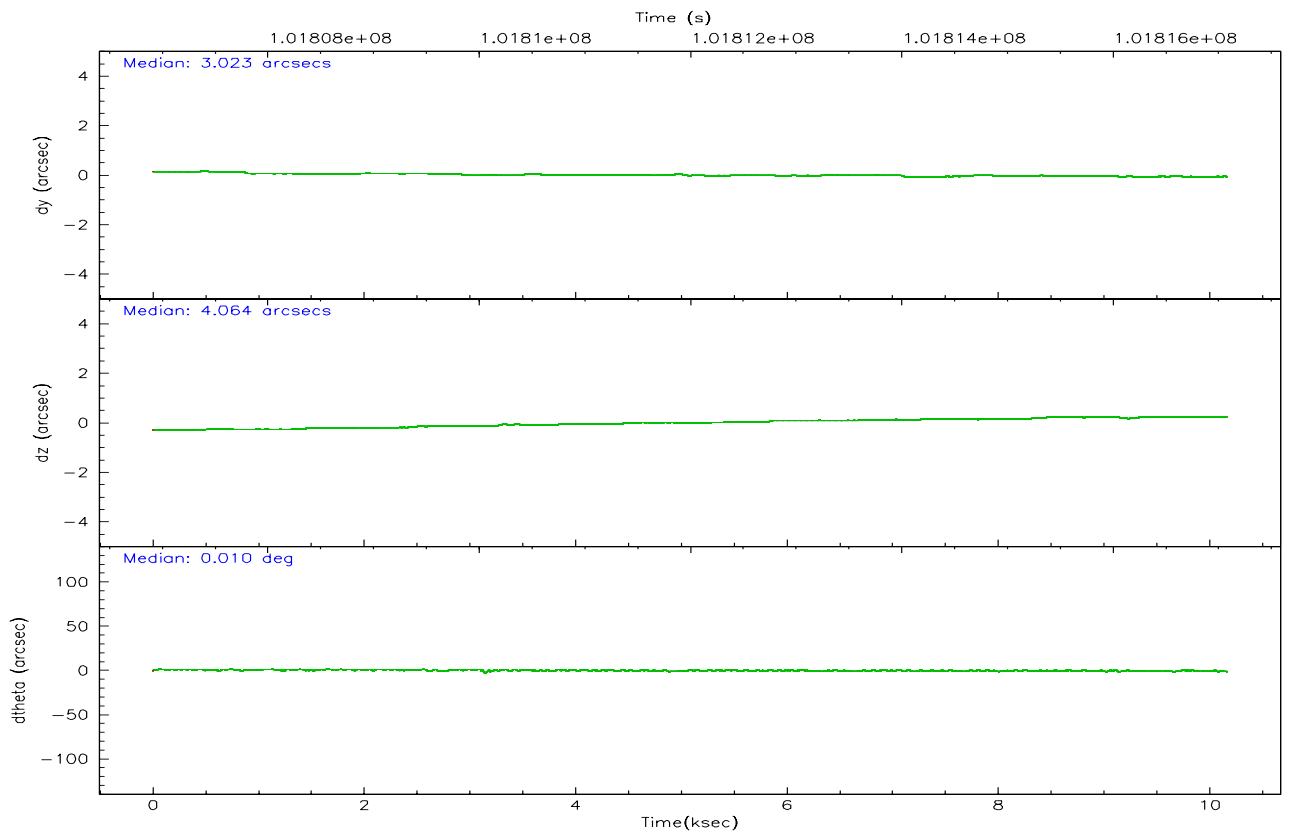
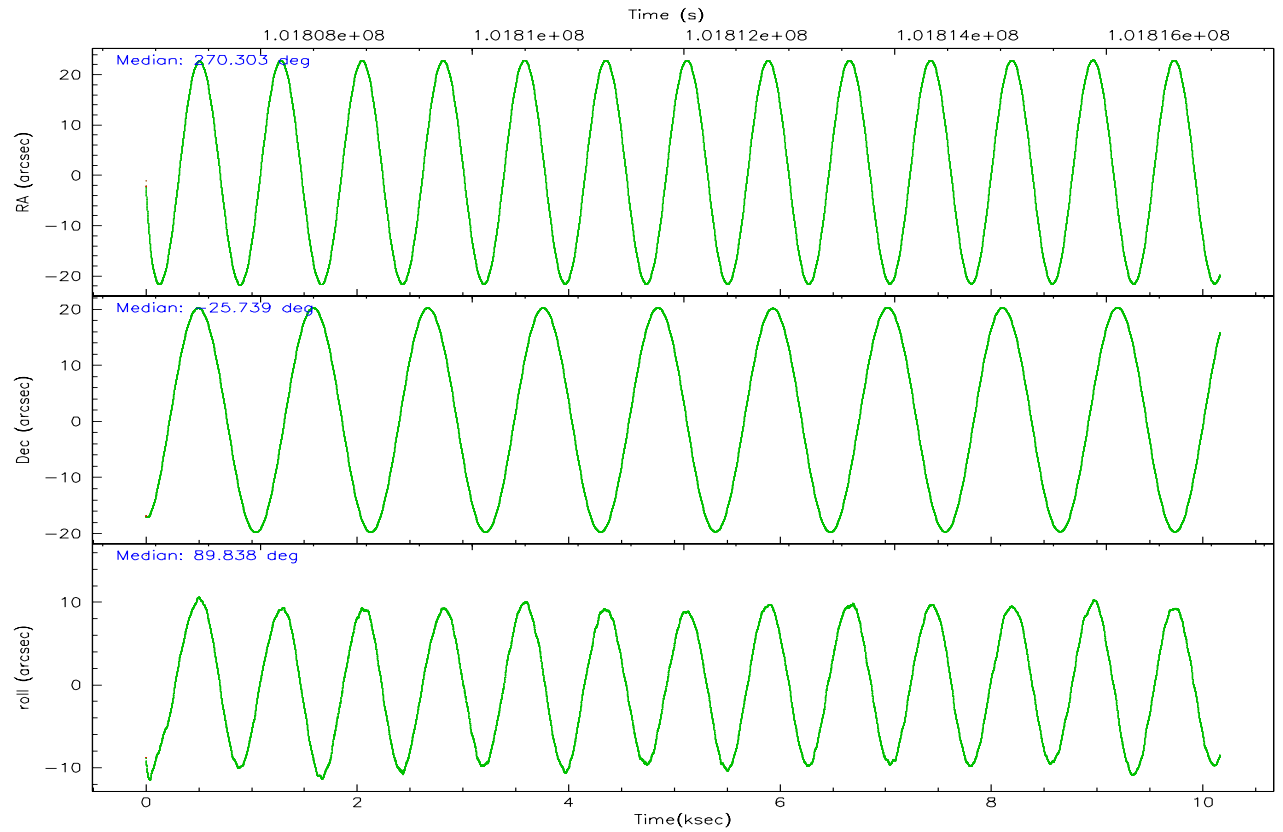
	segment 0
level 1 events	487057
rejected events	2180
rejected %	0%

2.2 Compared Parameters

Parameter	Planned	Actual	Parameter	Planned	Actual
Instrument	HRC	HRC	Obspar format version number	6	6
Detector	HRC-I	HRC-I	Obspar file type	PREDICTED	ACTUAL
Grating	NONE	NONE	Obspar update status	NONE	UPDATED
Data mode	OBSERVING	OBSERVING			
Observation mode	POINTING	POINTING			
Pointing RA	270.319040	270.3034455721788			
Pointing Dec	-25.762657	-25.73937354469705			
Pointing Roll	89.945013	89.84274559195978			
SIM focus pos (mm)	-1.040293	-1.038866356238299			
SIM defocus (mm)	0	0.001426264420575141			
SIM translation stage pos (mm)	126.985494	126.9854943052878			
SIM translation stage offset (mm)	0	-5.413686238853188e-06			
Observation start time	101807056.184000	101806061.12528			
Observation start date	2001-03-24T07:43:12	2001-03-24T07:27:41			
Observation end time	101817056.184000	101817291.53821			
Observation end date	2001-03-24T10:29:52	2001-03-24T10:34:51			

2.3 Aspect



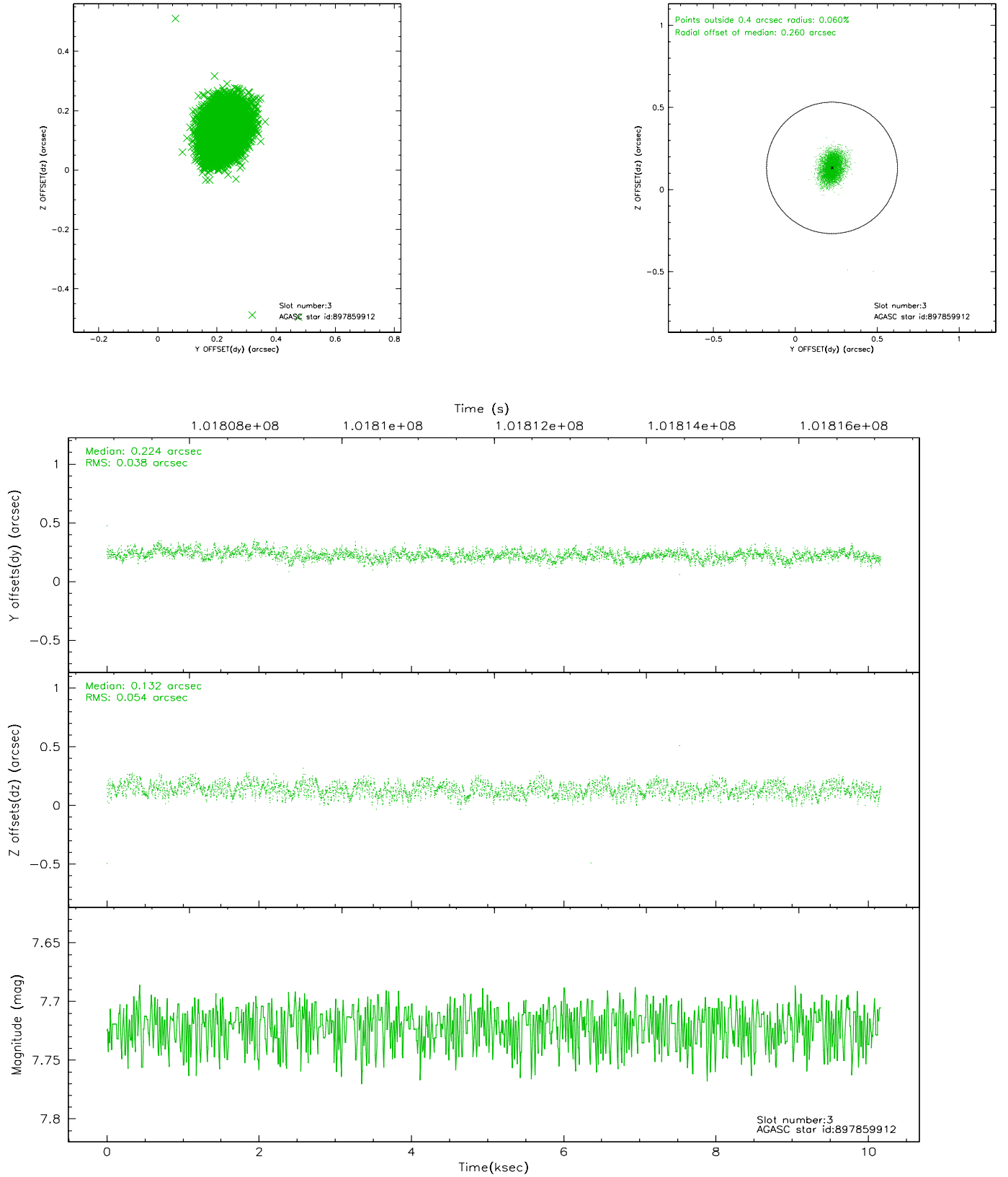


Slot Statistics

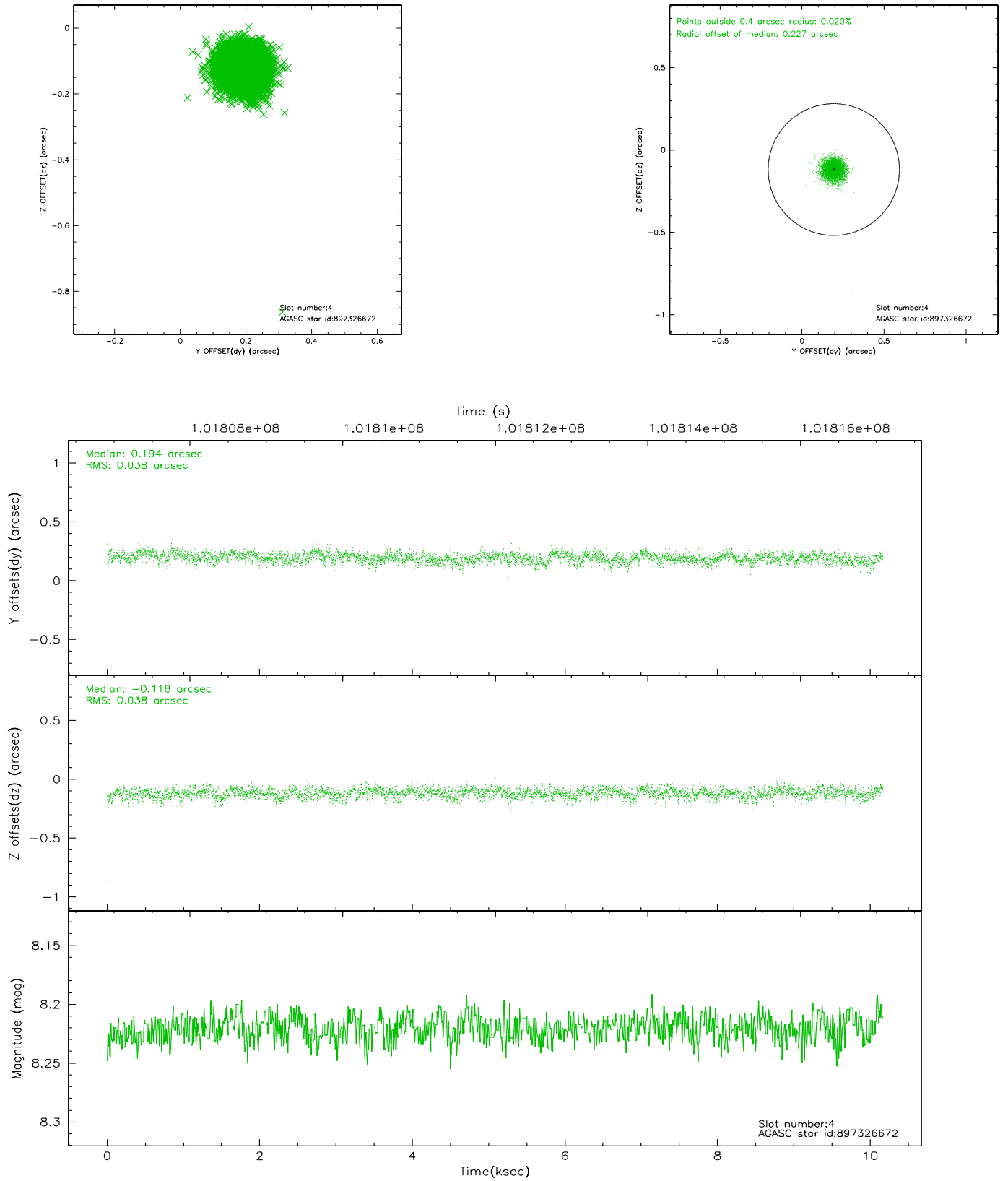
slot	status	id	mag	n_pts	med_dy	med_dz	dr1	dr2	ra	dec	mean_y	mean_z
0	FID	HRC-I-1	6.96	2480	0.054	0.061	0.012	0.028	0.000000	0.000000	-758.48	-1291.79
1	FID	HRC-I-3	7.04	2480	0.015	-0.088	0.008	0.013	0.000000	0.000000	-1187.27	1012.11
2	FID	HRC-I-4	6.98	2480	0.045	-0.062	0.013	0.034	0.000000	0.000000	1283.86	1010.62
3	GUIDE	897859912	7.72	4960	0.224	0.132	0.069	0.111	270.849161	-26.319822	-2007.26	-1713.39
4	GUIDE	897326672	8.22	4958	0.194	-0.118	0.056	0.090	270.237029	-26.222744	-1656.85	261.91
5	GUIDE	897326256	8.25	4959	-0.171	0.342	0.066	0.106	271.063775	-25.425801	1207.98	-2420.51
6	GUIDE	897188632	8.65	4960	-0.137	-0.298	0.069	0.111	269.725883	-25.281908	1724.55	1931.15
7	GUIDE	897191600	8.55	4959	-0.110	-0.056	0.070	0.110	269.999842	-25.086611	2431.71	1042.90

2.4 Star Slots

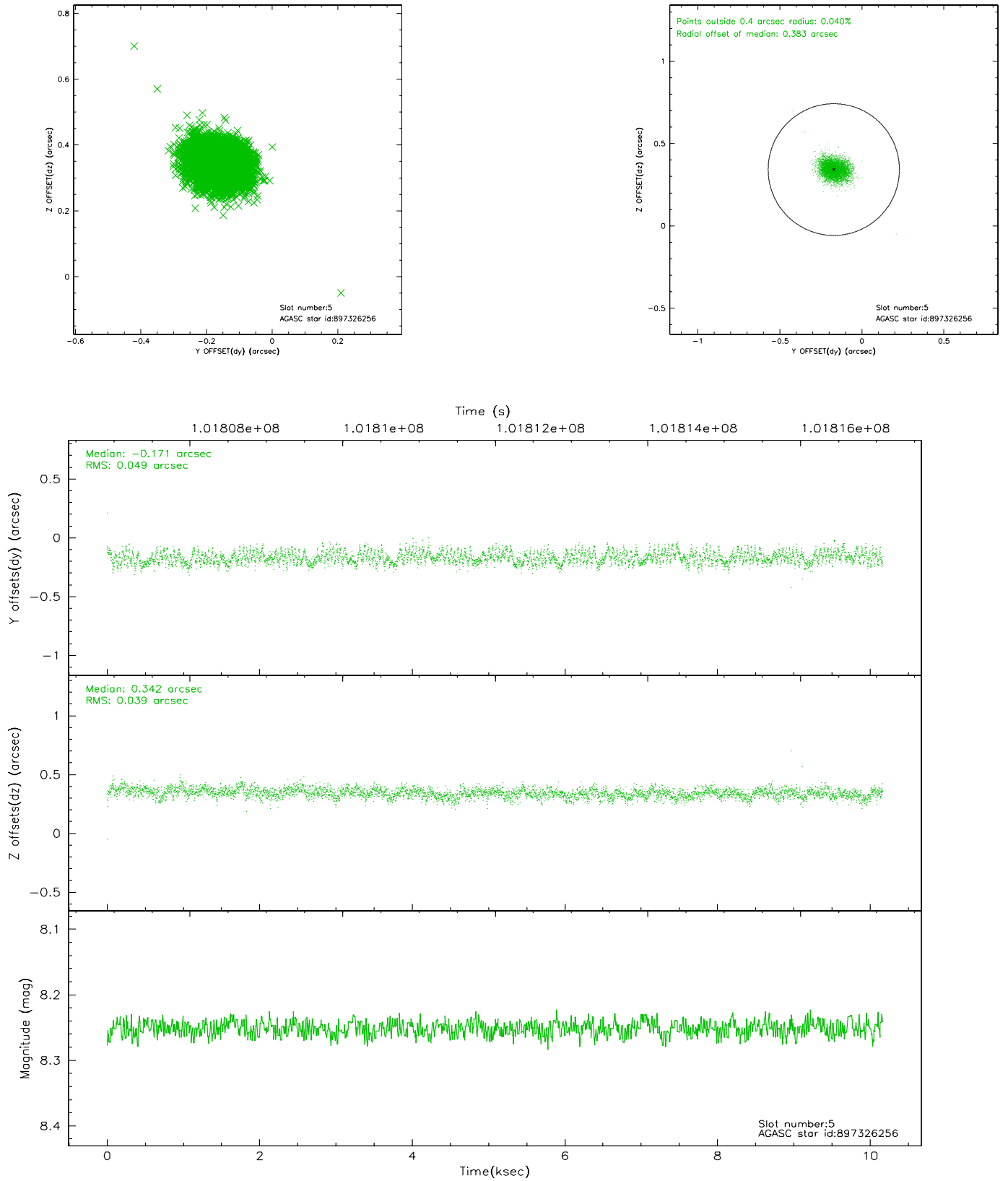
2.4.1 Slot 3



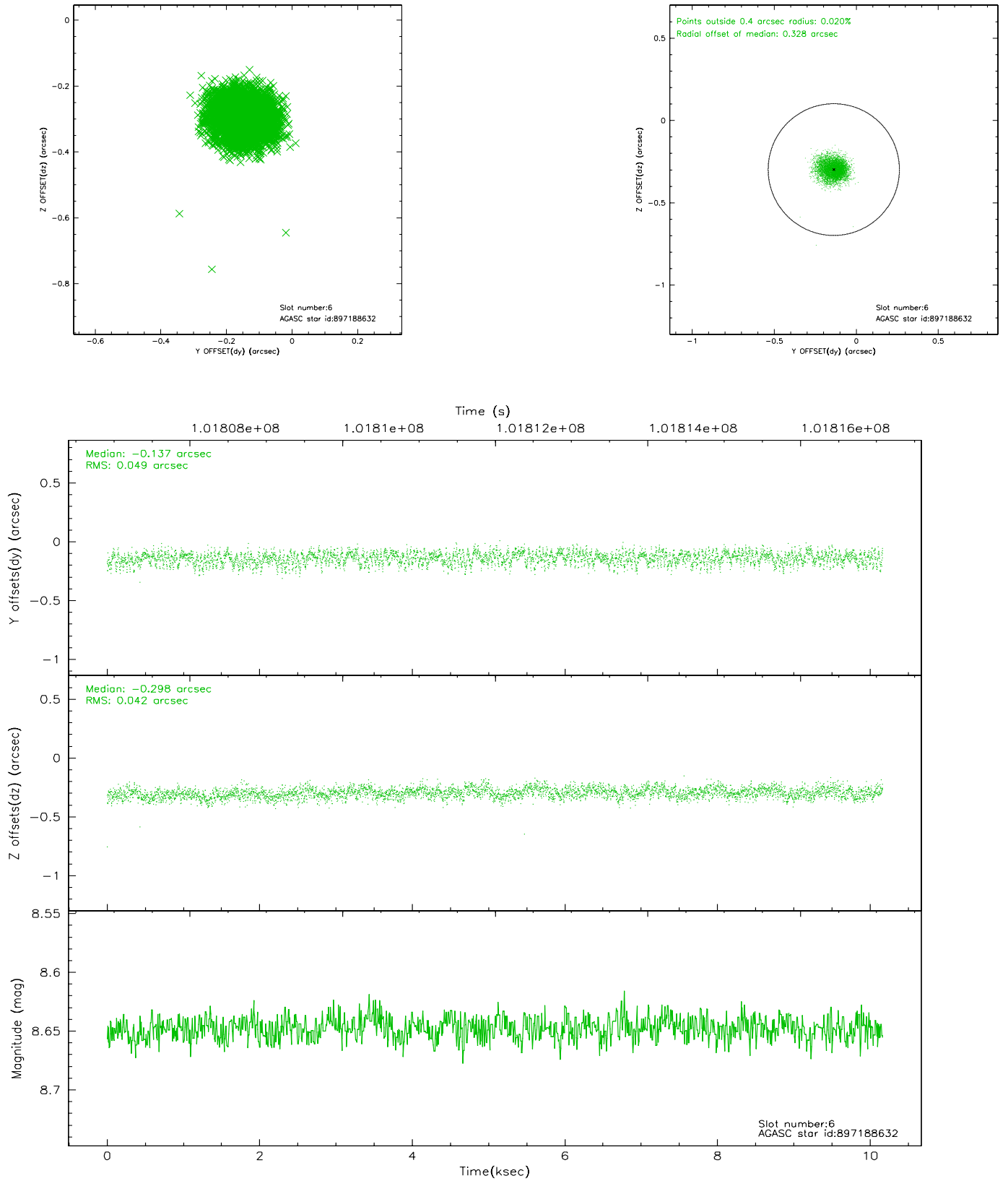
2.4.2 Slot 4



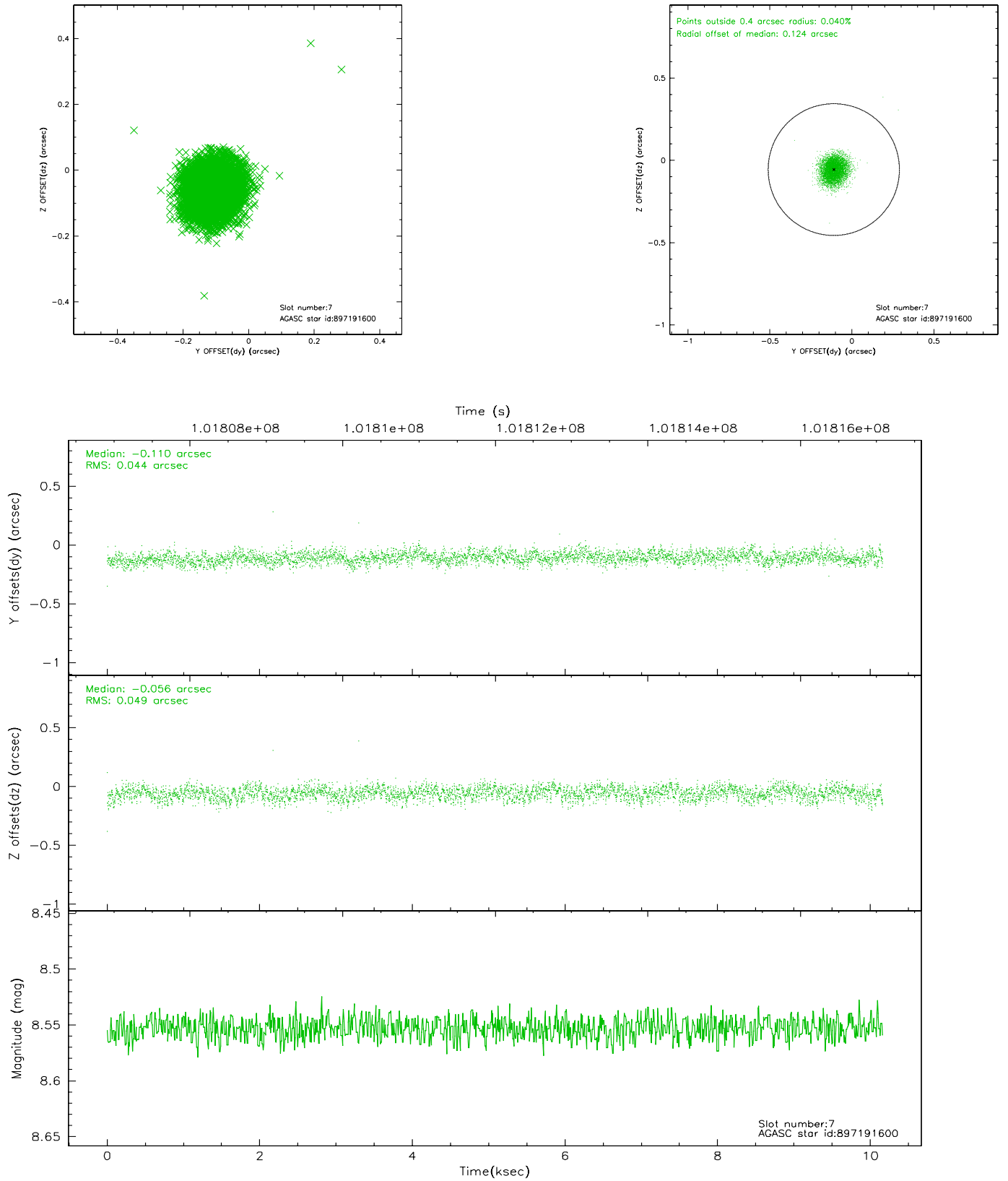
2.4.3 Slot 5



2.4.4 Slot 6

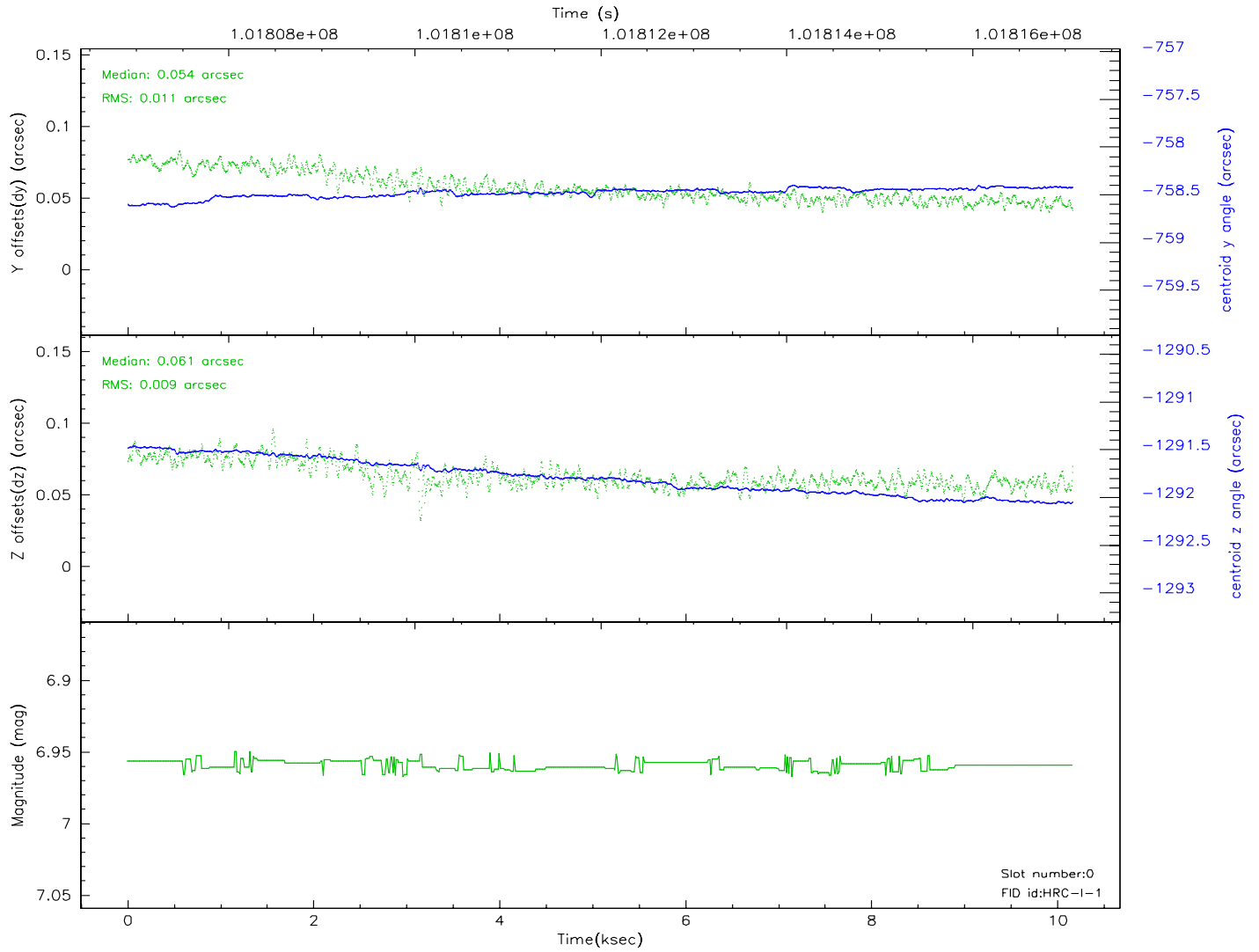
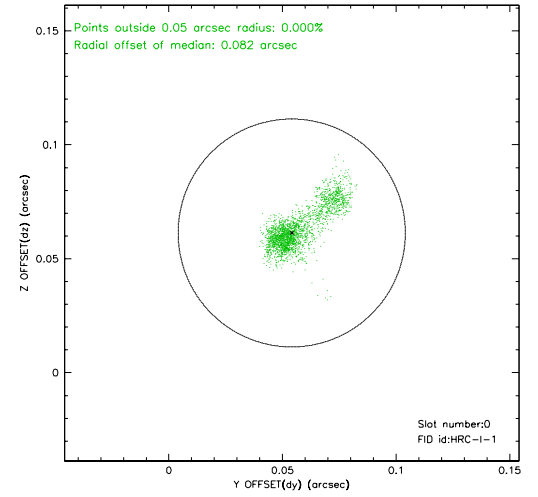
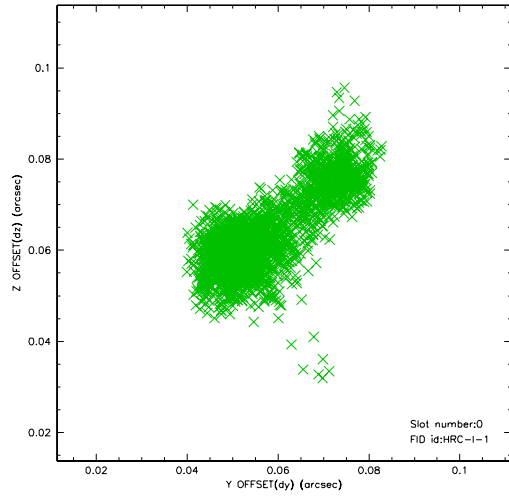


2.4.5 Slot 7

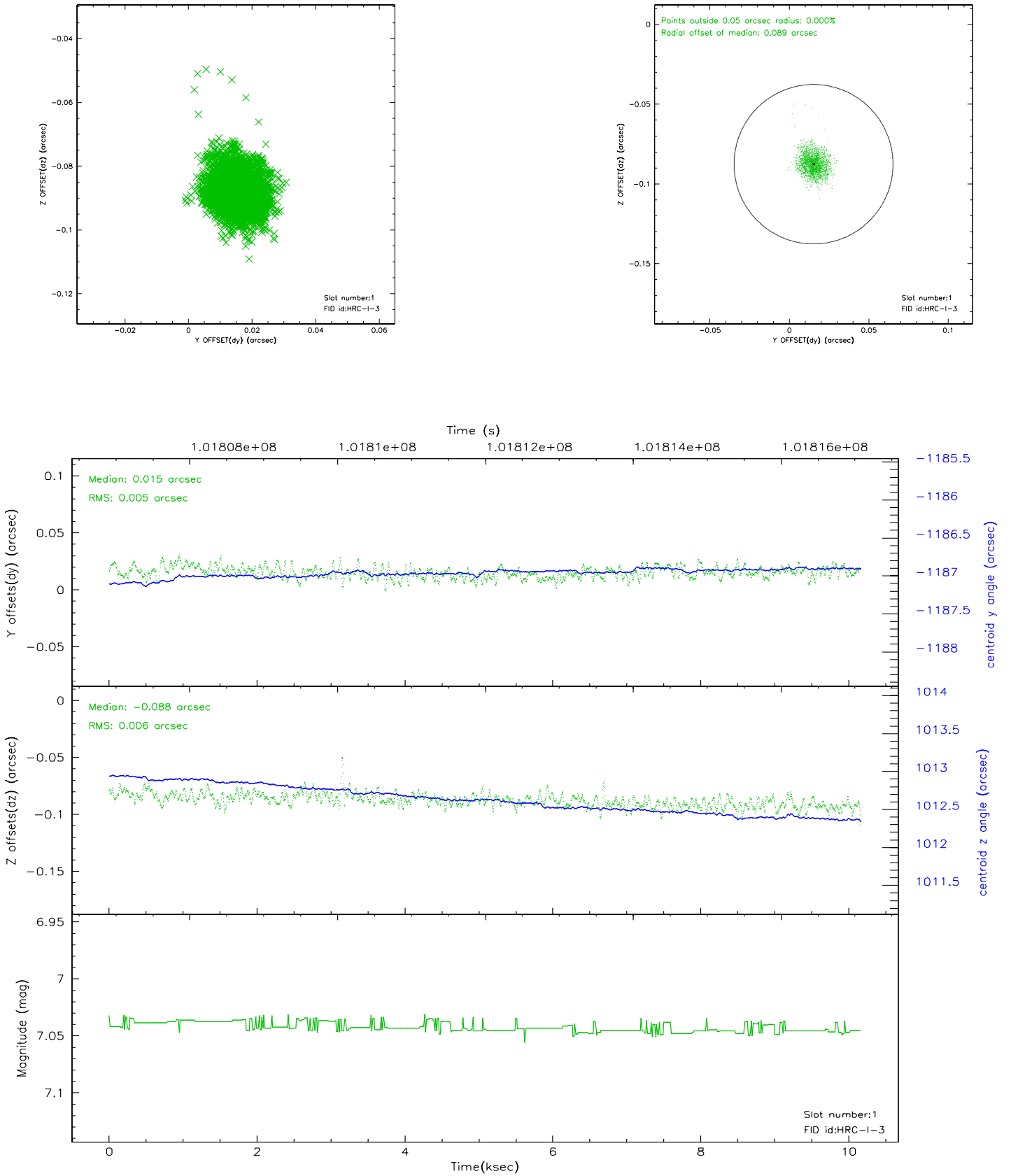


2.5 FID Slots

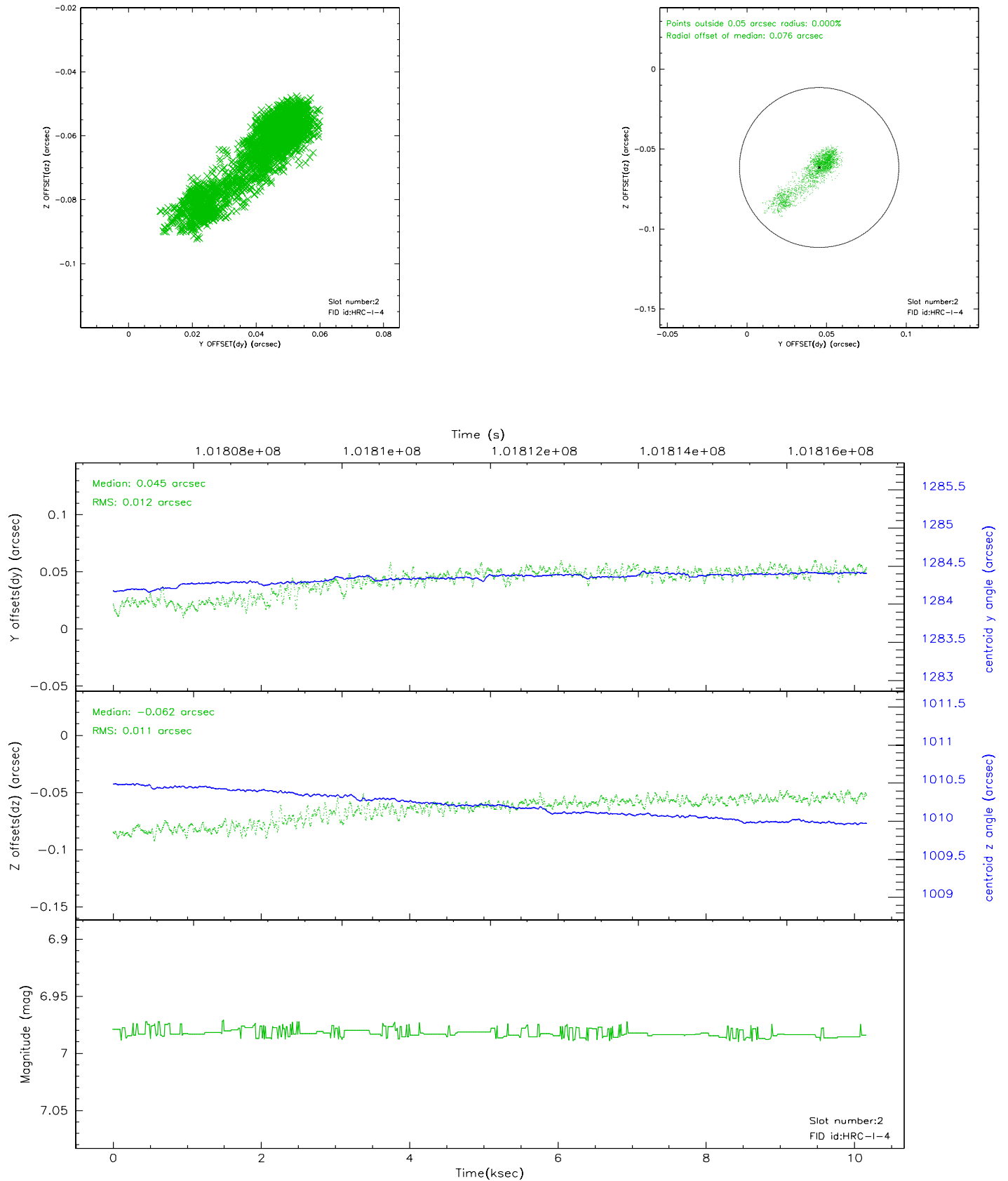
2.5.1 Slot 0



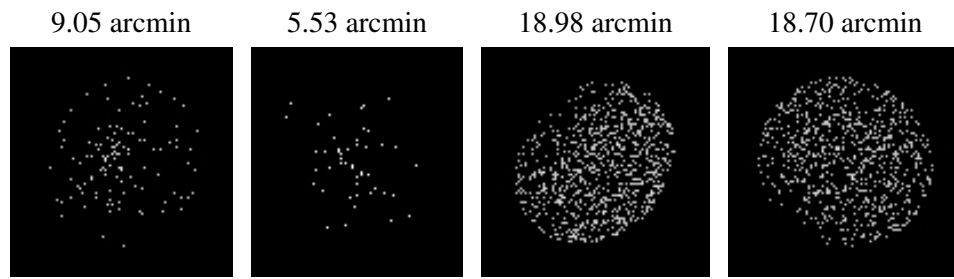
2.5.2 Slot 1



2.5.3 Slot 2



3 Point Sources



A Summary

A.1 Status

V&V Scientist	Beth Sundheim
V&V Date (YYYY-MM-DD)	2007.12.04
V&V Edition	1
V&V Disposition and Status	OK
V&V Charge Time	9.889

A.2 Comments

The current observation has been reprocessed as part of Repro III ('C' supplement) the purpose of which is to update all HRC-I ObsIDs since Jan 2000 to the latest calibrations available for that configuration. Specifically, we are updating the DEGAP solution and the Gain Maps applied. For more information see the Repro IIIC web page at:

<http://asc.harvard.edu/cda/repro3.html#IIIC>

and the associated links.