

V&V Reference Report

L2 ASCDS Version : 8.4.5

Observation 2260 - L2 Version 3
Chandra X-Ray Center

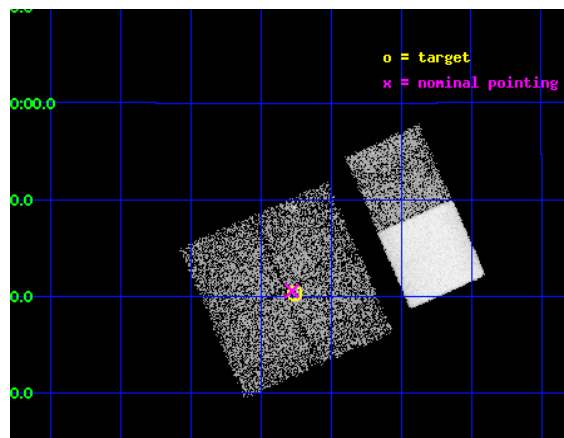
L2 Processing Date : Sep 3 2012

Contents

1	Front	2
2	OBI	3
2.1	OBI	3
2.1.1	Images	3
2.1.2	Bias	3
2.1.3	Parameters	4
2.1.4	Events	4
2.2	Compared Parameters	5
2.3	Aspect	6
2.4	Star Slots	9
2.4.1	Slot 3	9
2.4.2	Slot 4	10
2.4.3	Slot 5	11
2.4.4	Slot 6	12
2.4.5	Slot 7	13
2.5	FID Slots	14
2.5.1	Slot 0	14
2.5.2	Slot 1	15
2.5.3	Slot 2	16
A	Summary	17
A.1	Status	17
A.2	Comments	17

1 Front

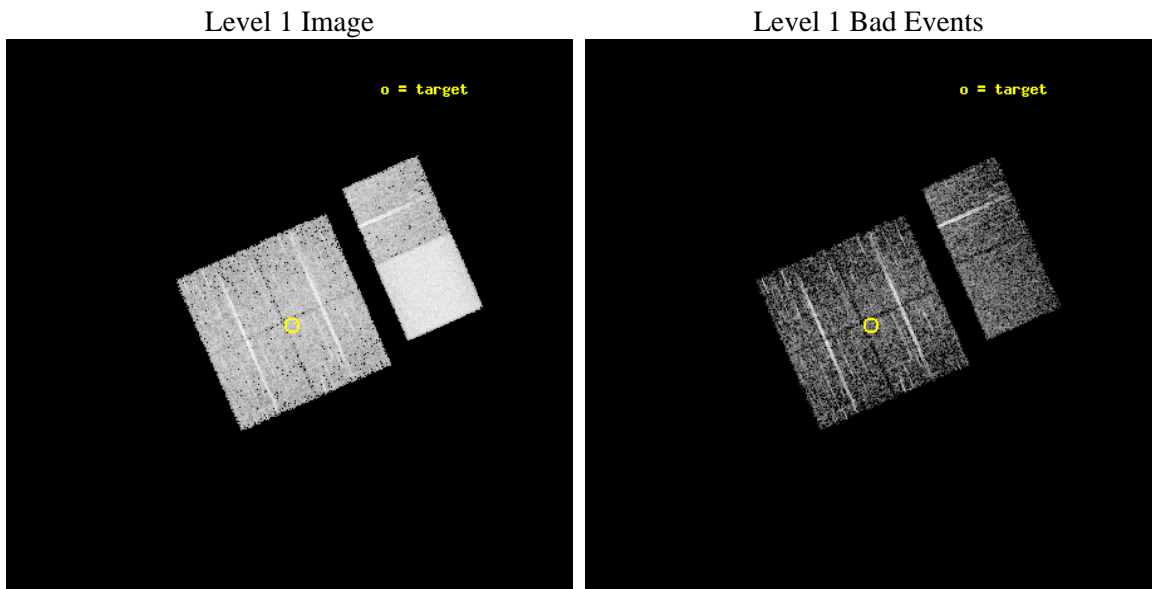
seq_num	900087	Sequence number
obs_id	2260	Observation id
title	CHANDRA OBSERVATION OF HARD X-RAY SOURCES DISCOVERED WITH ASCA	Pro
observer	Dr Yoshihiro Ueda	Principal investigator
object	AGX~J104645+1140	Source name
dtcycle	0	
cycle	P	events from which exps? Prim/Second/Both
ra_targ	161.69125	Observer's specified target RA [deg]
dec_targ	11.673111	Observer's specified target Dec [deg]
ra_nom	161.69486207431	Nominal RA [deg]
dec_nom	11.676420354372	Nominal Dec [deg]
roll_nom	66.199970055927	Nominal Roll [deg]
revision	3	Processing version of data
ontime	4352.0000040382	Sum of GTIs [s]
livetime	4296.8923595273	Livetime [s]
ontime0	4352.0000040382	Sum of GTIs [s]
ontime1	4352.0000040382	Sum of GTIs [s]
ontime2	4352.0000040382	Sum of GTIs [s]
ontime3	4352.0000040382	Sum of GTIs [s]
ontime6	4352.0000040382	Sum of GTIs [s]
ontime7	4352.0000040382	Sum of GTIs [s]
l2events	83697	Number of level 2 events



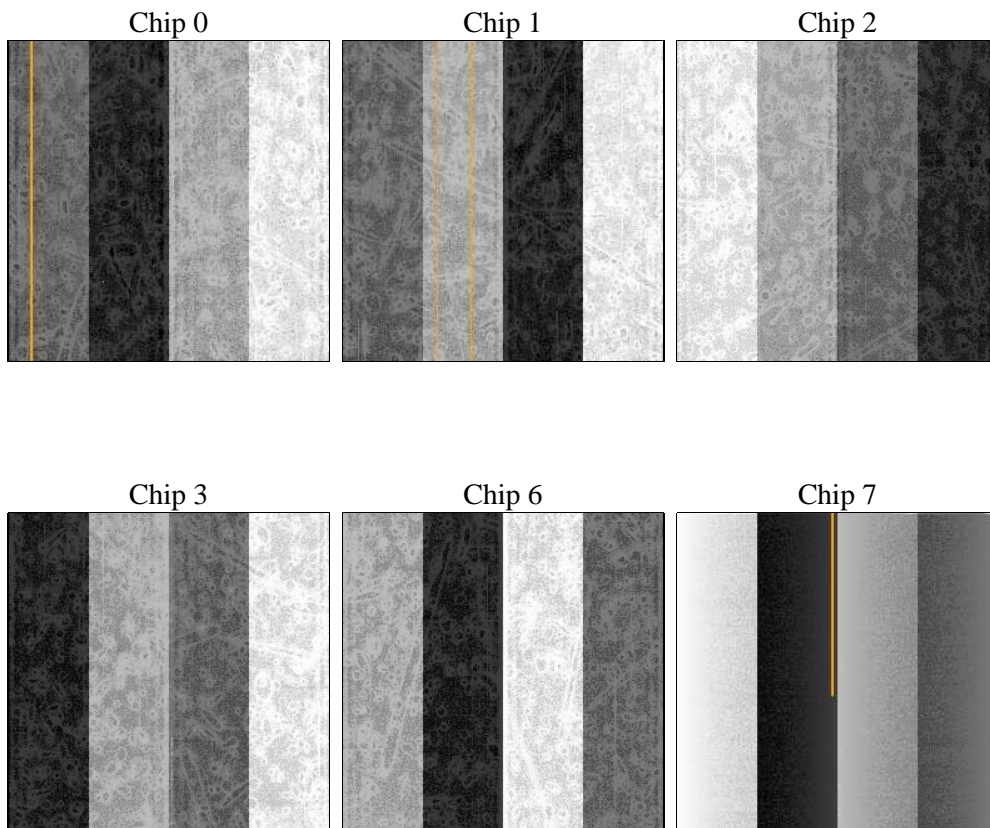
2 OBI

2.1 OBI

2.1.1 Images



2.1.2 Bias



2.1.3 Parameters

obi_num	0	Obi number	sched_exp_time	4400.000000	[s] Scheduled observation exposure time
ascdsver	8.4.5	Processing system revision	ontime	4352.0000040382	Sum of GTIs [s]
caldsver	4.5.1.1	 	ontime0	4352.0000040382	Sum of GTIs [s]
date	2012-09-03T02:46:47	Date and time of file creation	ontime1	4352.0000040382	Sum of GTIs [s]
revision	3	Processing version of data	ontime2	4352.0000040382	Sum of GTIs [s]
			ontime3	4352.0000040382	Sum of GTIs [s]
			ontime6	4352.0000040382	Sum of GTIs [s]
			ontime7	4352.0000040382	Sum of GTIs [s]
			l1events	217698	Number of level 1 events

2.1.4 Events

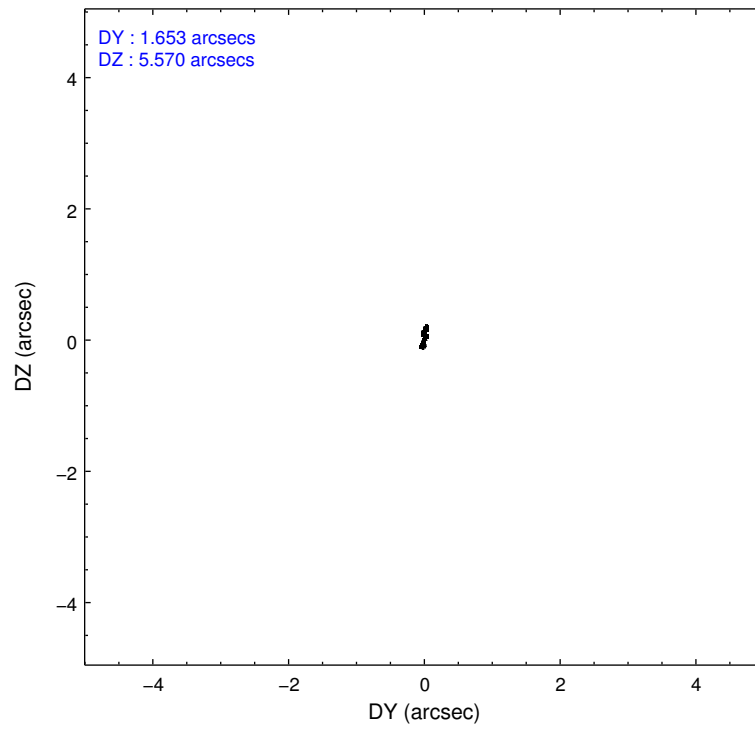
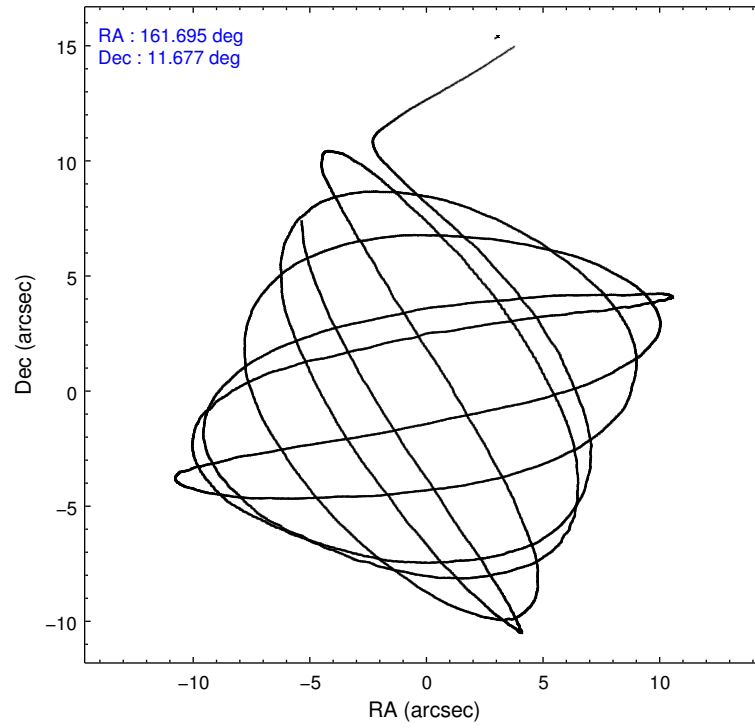
	ccd 0	ccd 1	ccd 2	ccd 3	ccd 6	ccd 7		ccd 0	ccd 1	ccd 2	ccd 3	ccd 6	ccd 7
level 1 events	25466	25176	26221	26420	28813	85602	grade 0 events	2102	2208	2288	2112	3400	8968
rejected events	21443	20969	22147	22477	23264	20336		8%	8%	8%	7%	11%	10%
rejected %	84%	83%	84%	85%	80%	23%	grade 1 events	13	10	10	15	17	32
								0%	0%	0%	0%	0%	0%
							grade 2 events	797	743	789	745	914	12514
								3%	2%	3%	2%	3%	14%
							grade 3 events	320	347	300	294	336	5464
								1%	1%	1%	1%	1%	6%
							grade 4 events	285	332	231	297	298	5430
								1%	1%	0%	1%	1%	6%
							grade 5 events	917	969	863	939	1086	3394
								3%	3%	3%	3%	3%	3%
							grade 6 events	528	585	473	501	611	32958
								2%	2%	1%	1%	2%	38%
							grade 7 events	20504	19982	21267	21517	22151	16842
								80%	79%	81%	81%	76%	19%

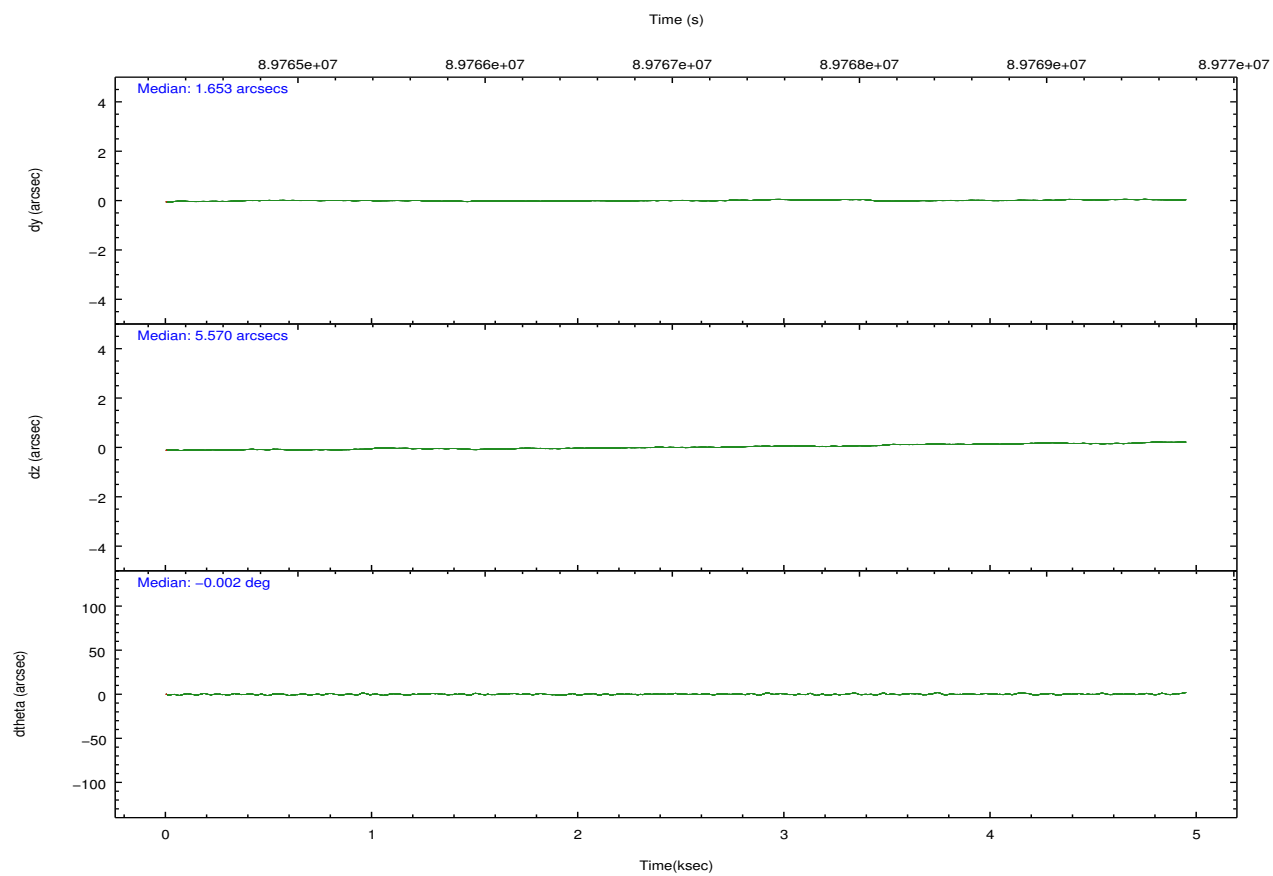
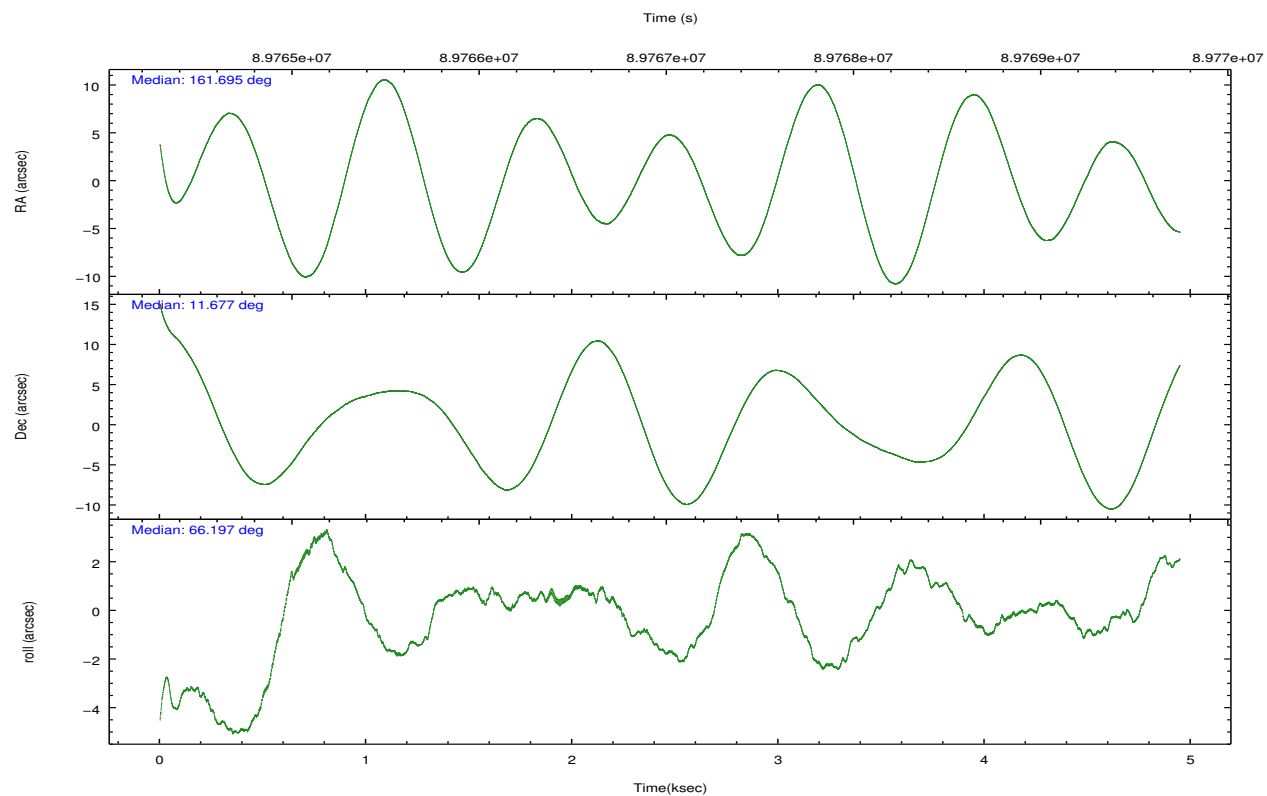
2.2 Compared Parameters

Parameter	Planned	Actual
Instrument	ACIS	ACIS
Detector	ACIS-012367	ACIS-012367
Grating	NONE	NONE
Data mode	FAINT	FAINT
Observation mode	POINTING	POINTING
[deg] Pointing RA	161.697836	161.6948620743149
[deg] Pointing Dec	11.649080	11.67642035437214
[deg] Pointing Roll	65.990682	66.19997005592737
[mm] SIM focus pos	-0.782348	-0.7809083437167272
[mm] SIM defocus	0	0.001439871863259334
[mm] SIM translation stage pos	-233.592463	-233.5874344608287
[mm] SIM translation stage offset	0	-0.005018542100998502
[s] Observation start time (MET)	89765095.184000	89763957.32557701
Observation start date	2000-11-04T22:43:51	2000-11-04T22:25:57
[s] Observation end time (MET)	89769495.184000	89770044.800807
Observation end date	2000-11-04T23:57:11	2000-11-05T00:07:24
Read mode	TIMED	TIMED

Parameter	Planned	Actual
Obspar format version number	7	7
Obspar file type	PREDICTED	ACTUAL
Obspar update status	NONE	UPDATED
Number of optional ACIS chips dropped	0	0
On-chip summing requested	N	N
Subarray requested	NONE	NONE
Alternating exposures requested	N	N
[s] Primary exposure time	0.000000	3.2

2.3 Aspect



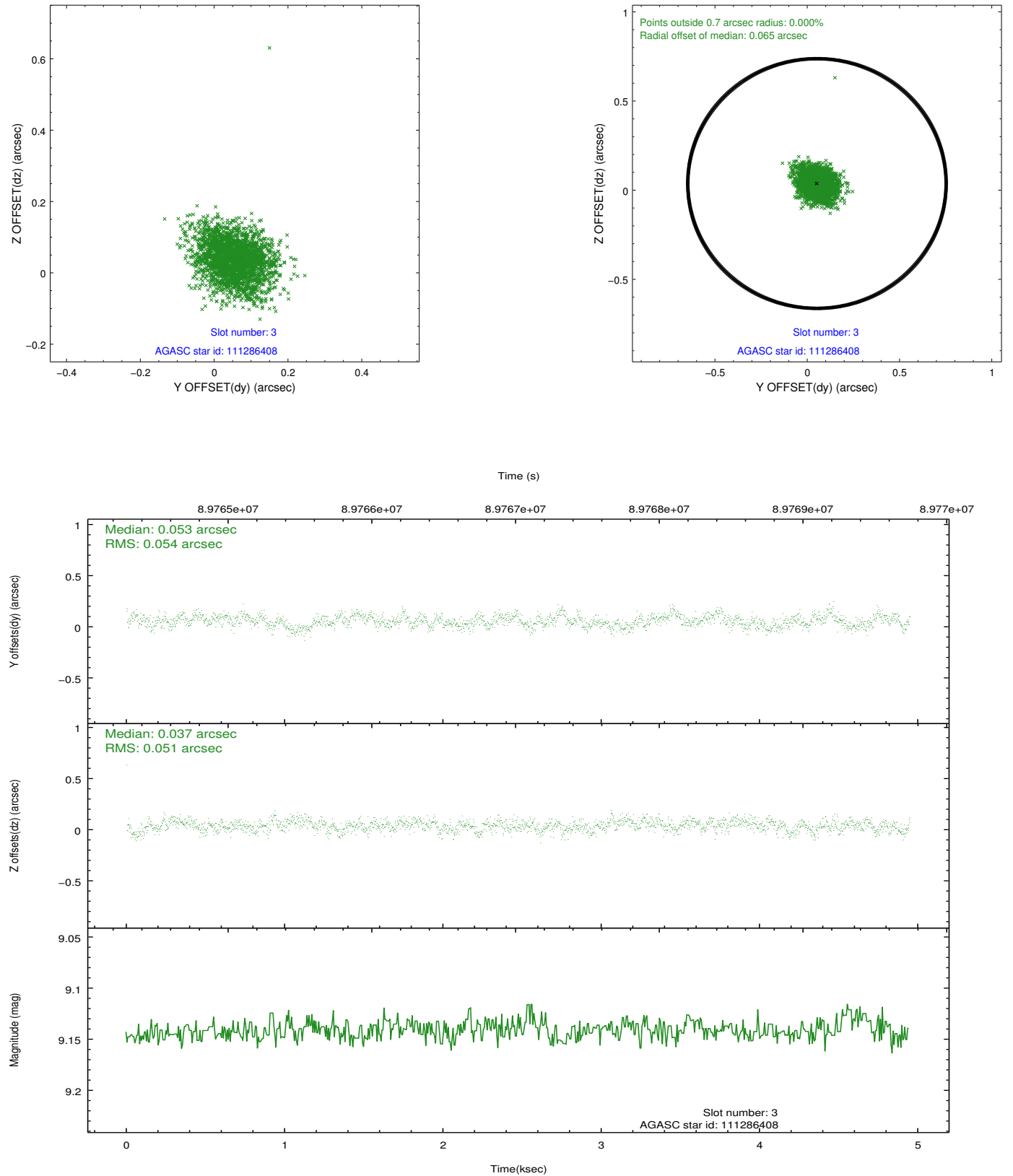


Slot Statistics

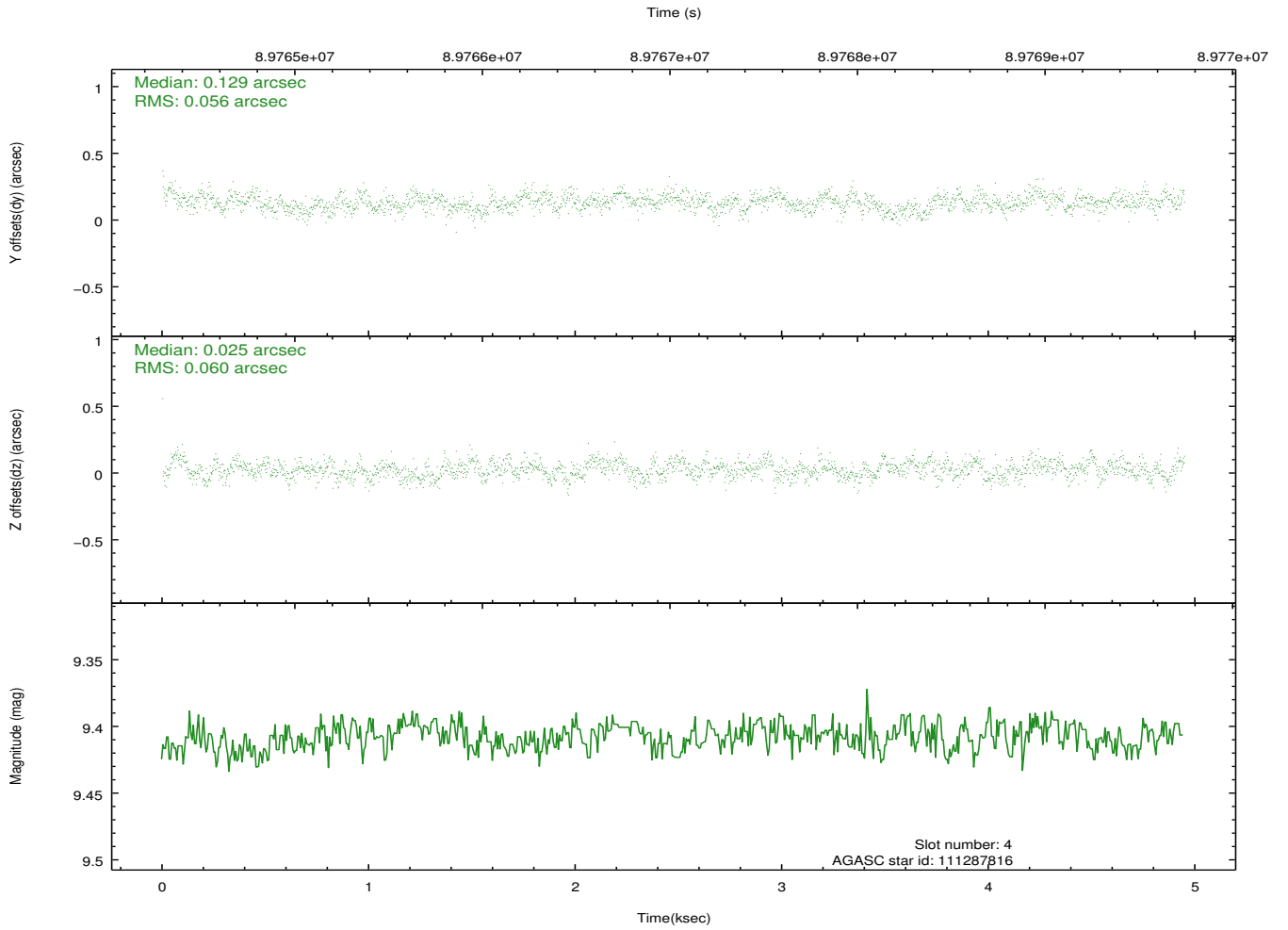
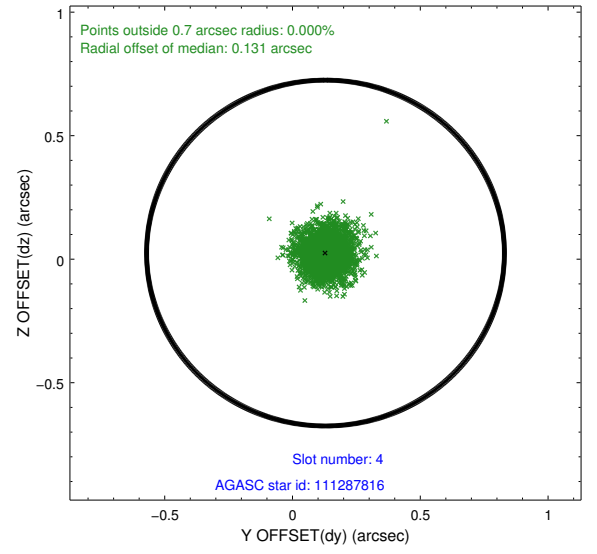
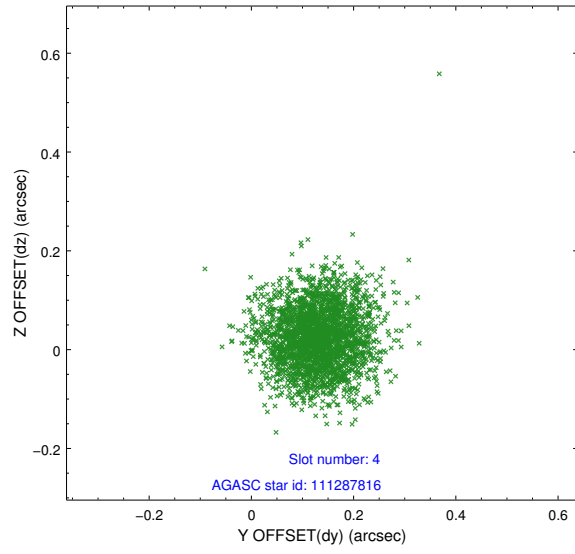
slot	status	id	mag	n_pts	med_dy	med_dz	dr1	dr2	ra	dec	mean_y	mean_z
0	FID	ACIS-I-2	7.15	1207	-0.036	-0.048	0.010	0.017	0.000000	0.000000	-756.03	-835.36
1	FID	ACIS-I-4	7.18	1207	-0.034	0.041	0.006	0.010	0.000000	0.000000	2157.47	1070.29
2	FID	ACIS-I-5	7.23	1207	-0.031	0.076	0.009	0.015	0.000000	0.000000	-1808.27	1069.57
3	GUIDE	111286408	9.14	2414	0.053	0.037	0.077	0.127	161.652685	11.184124	-1594.74	-534.66
4	GUIDE	111287816	9.41	2409	0.129	0.025	0.087	0.140	161.778752	10.926407	-2261.41	-1319.38
5	GUIDE	111285992	9.75	2409	-0.233	0.070	0.090	0.147	162.048017	11.891969	1299.43	-770.39
6	GUIDE	111280632	9.87	2412	0.134	-0.314	0.128	0.203	161.089942	11.335611	-1902.09	1501.97
7	GUIDE	111286848	9.55	2413	-0.087	0.180	0.097	0.159	162.100662	11.107254	-1203.51	-2091.64

2.4 Star Slots

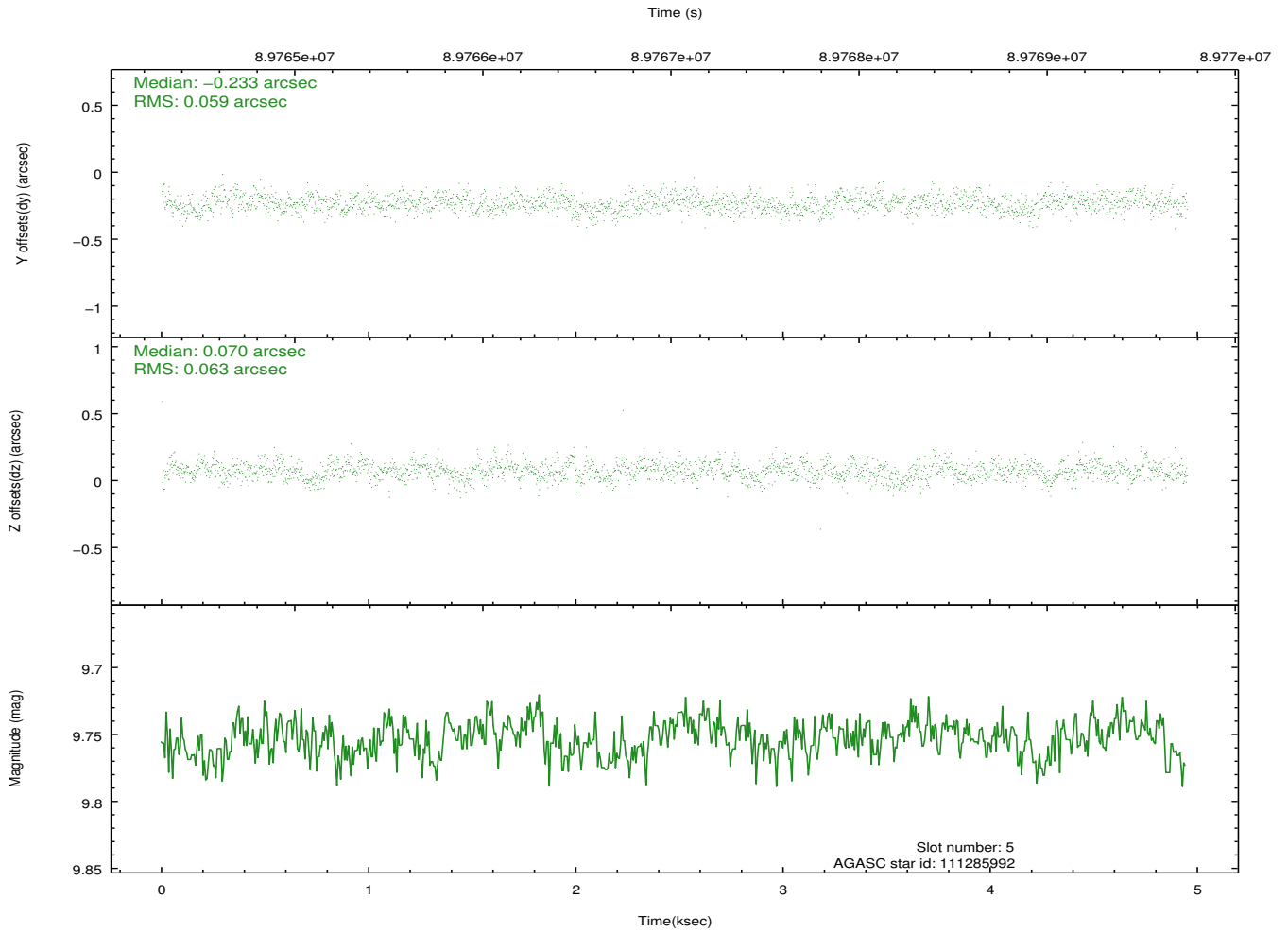
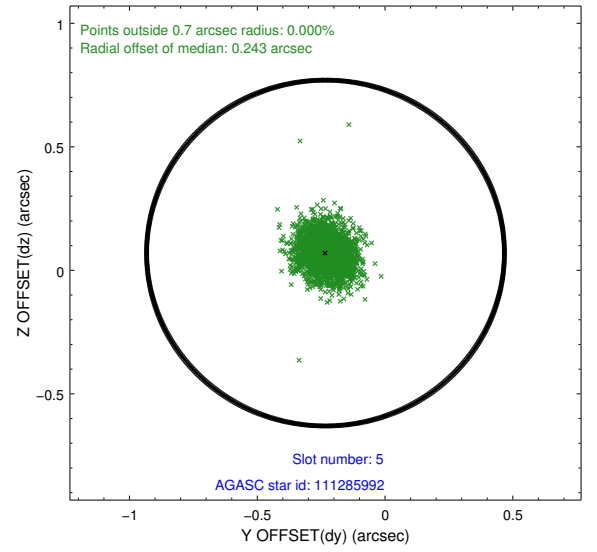
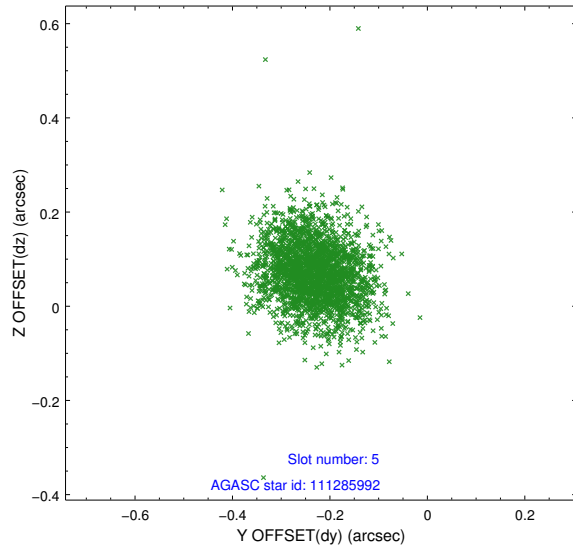
2.4.1 Slot 3



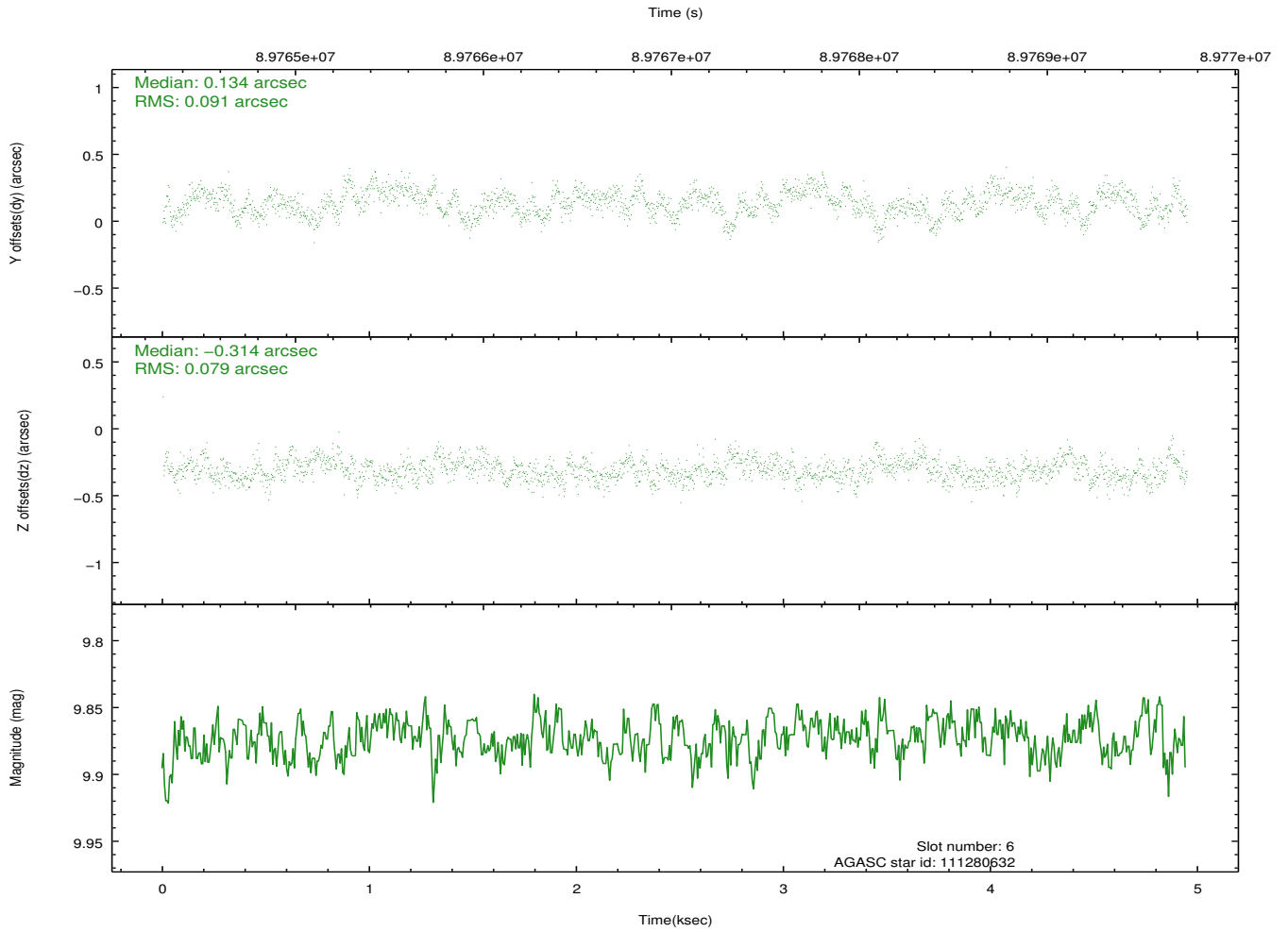
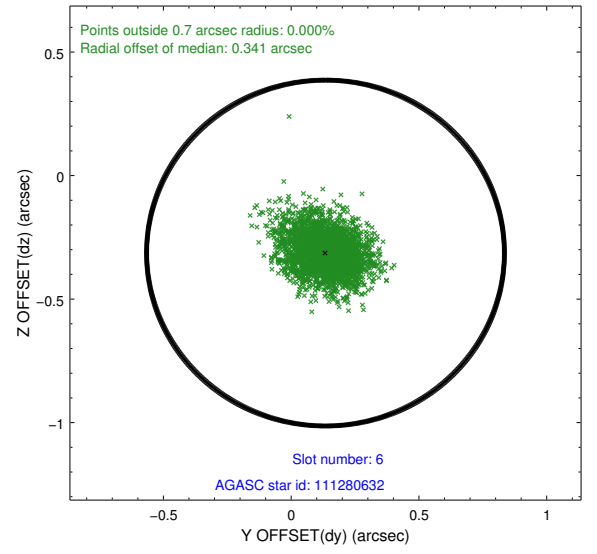
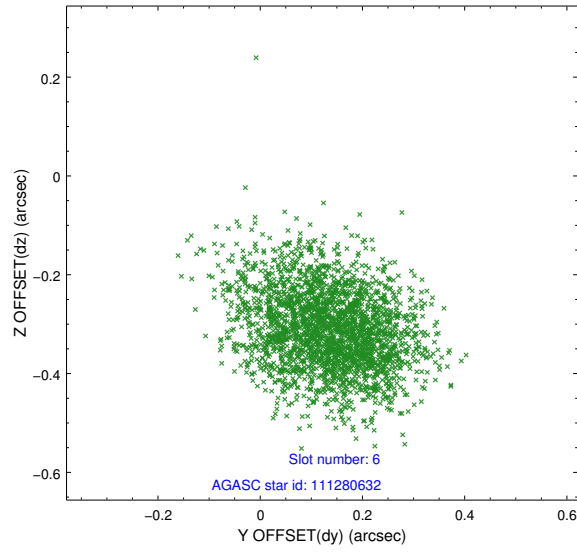
2.4.2 Slot 4



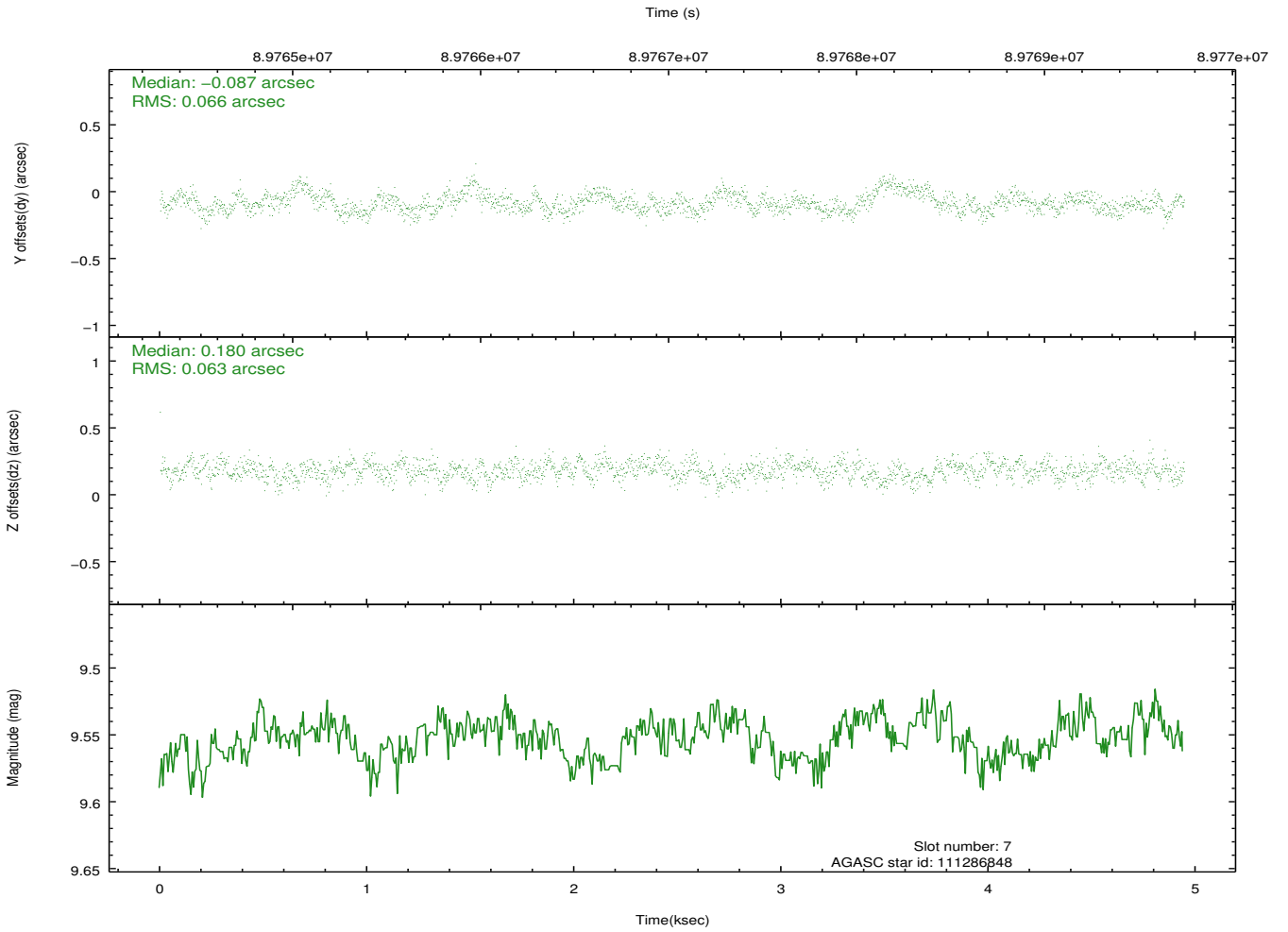
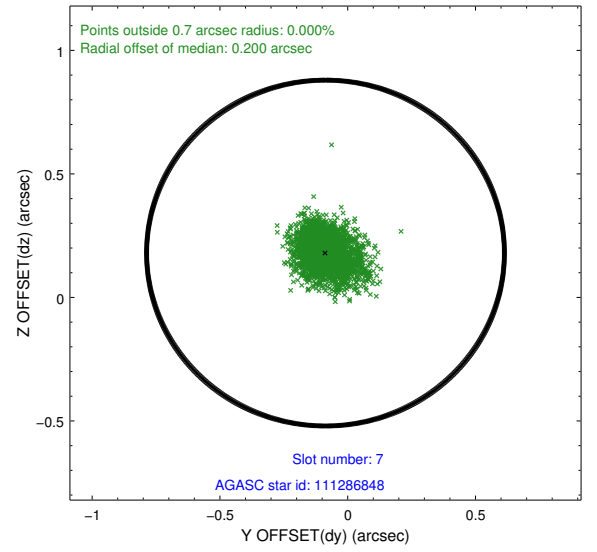
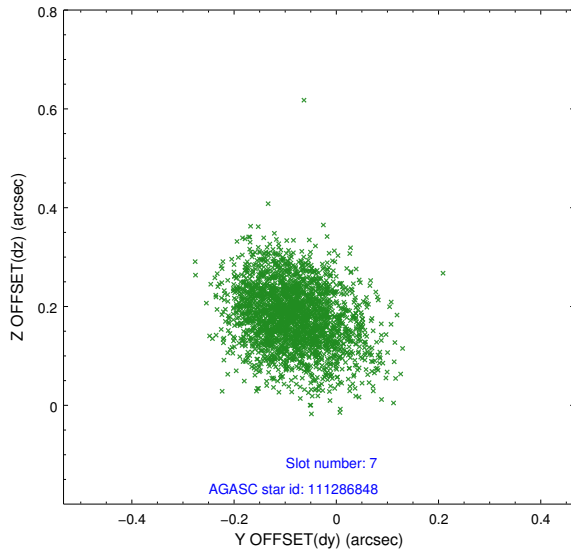
2.4.3 Slot 5



2.4.4 Slot 6

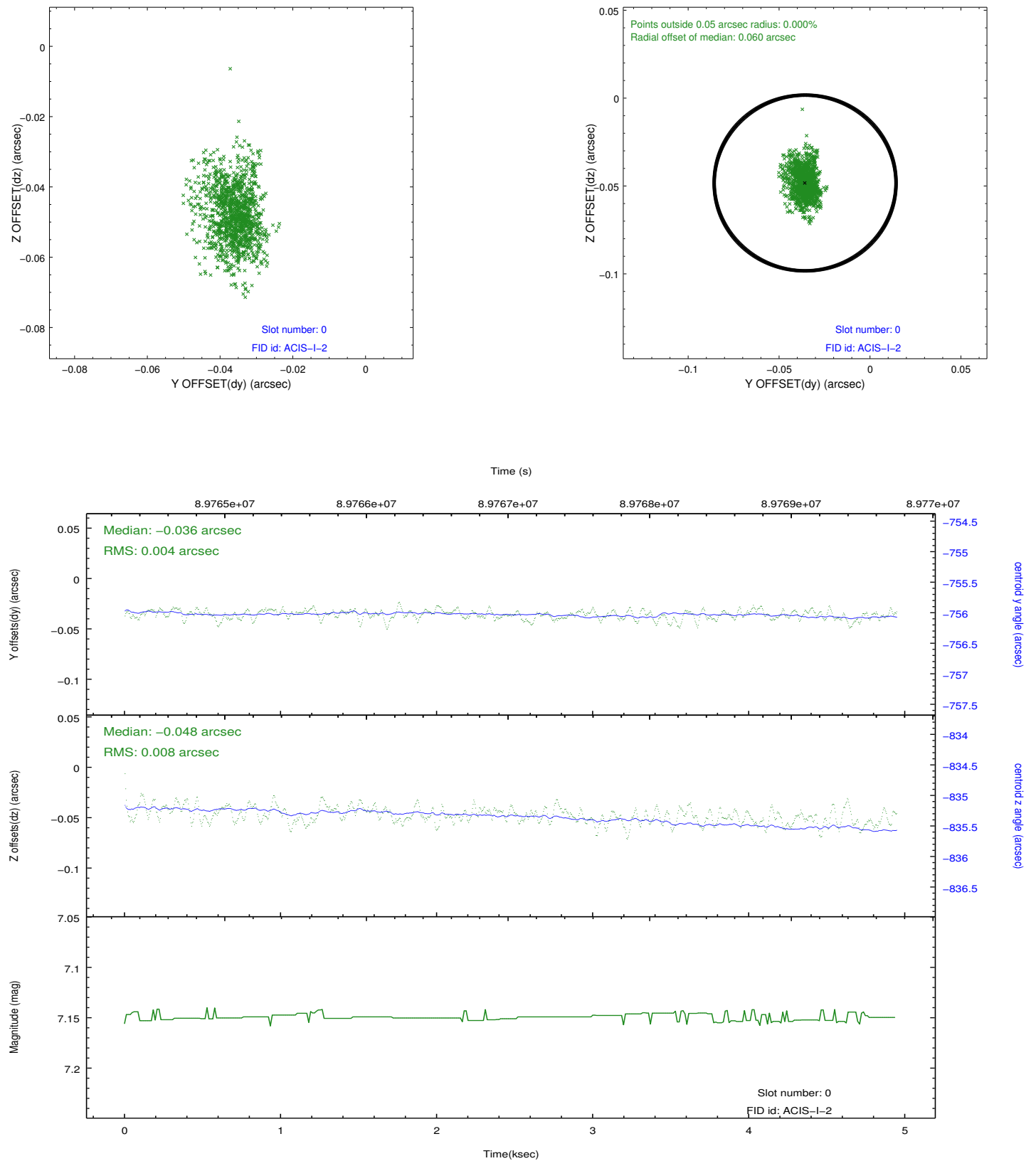


2.4.5 Slot 7

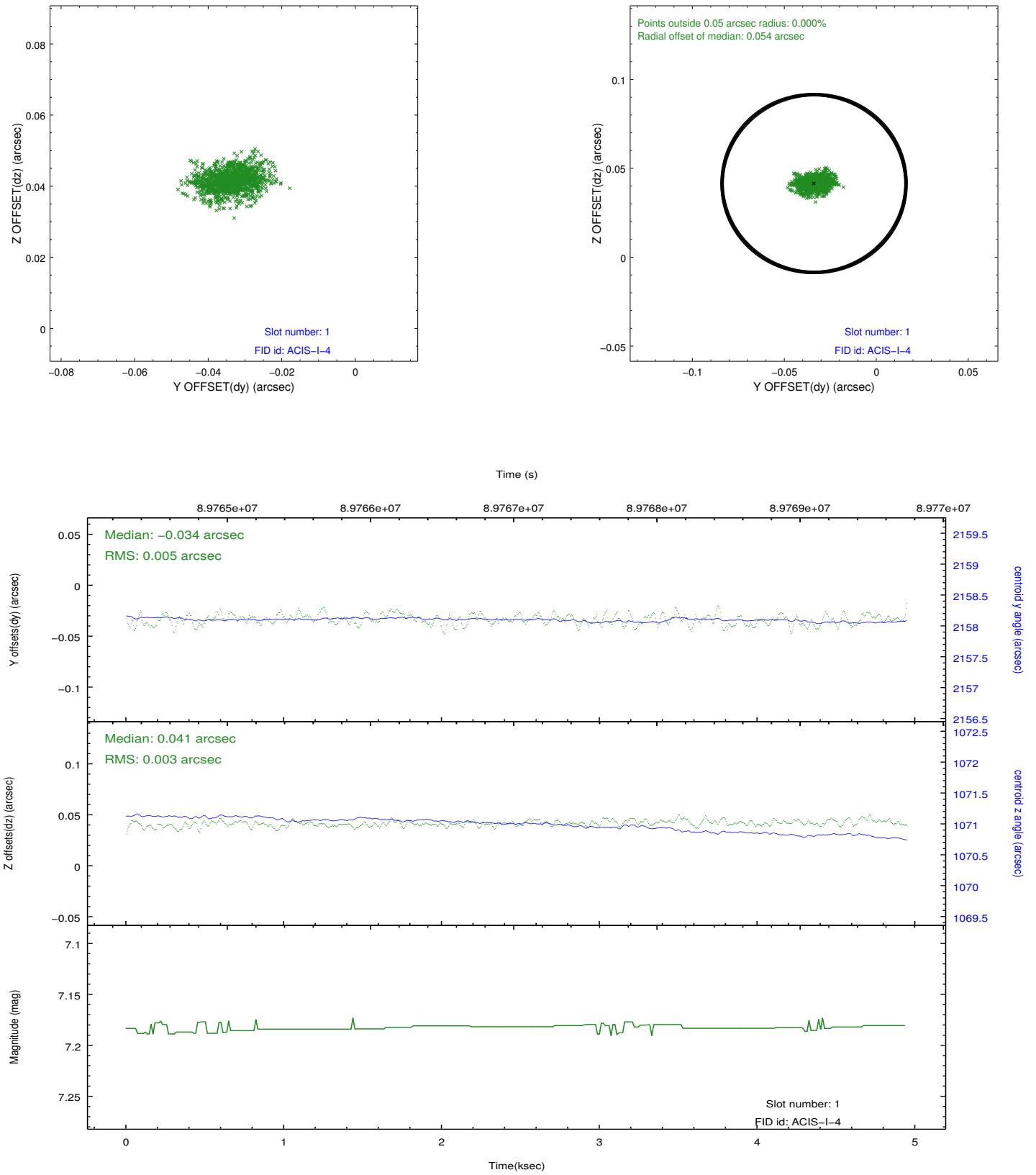


2.5 FID Slots

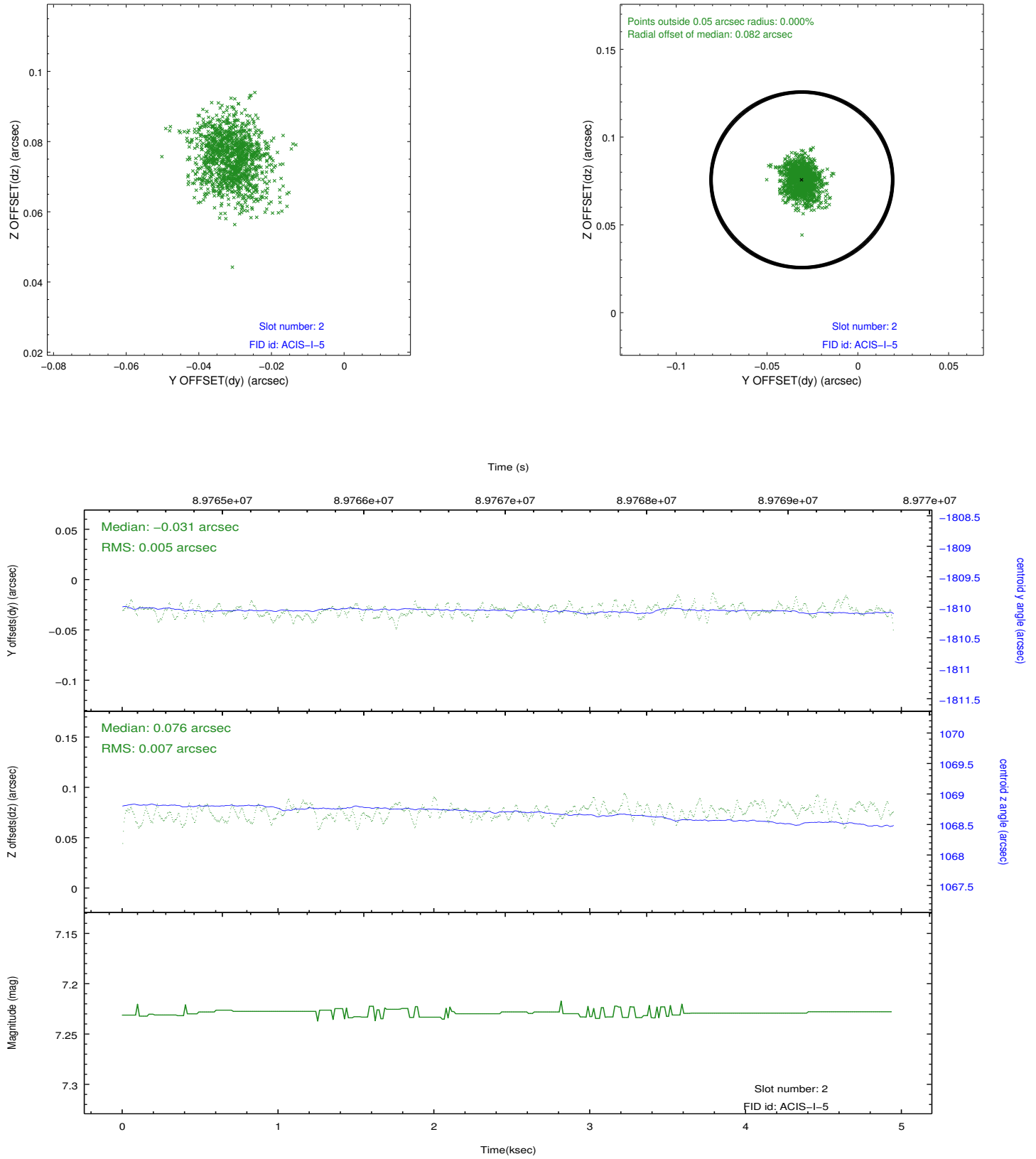
2.5.1 Slot 0



2.5.2 Slot 1



2.5.3 Slot 2



A Summary

A.1 Status

V&V Scientist	Jen Lauer
V&V Date (YYYY-MM-DD)	2012.09.10
V&V Edition	1
V&V Disposition and Status	OK
V&V Charge Time	4.355

A.2 Comments