

V&V Reference Report

L2 ASCDS Version : 7.6.9

Observation 2250 - L2 Version 001
Chandra X-Ray Center

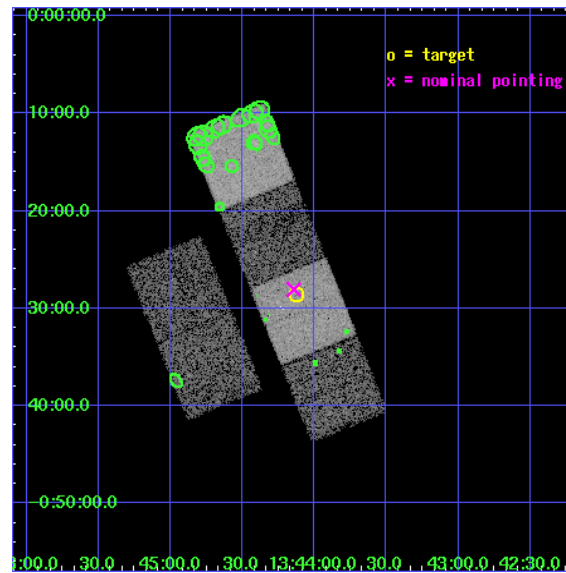
L2 Processing Date : Nov 2 2006

Contents

1	Front	2
2	OBI	3
2.1	OBI	3
2.1.1	Images	3
2.1.2	Bias	3
2.1.3	Parameters	4
2.1.4	Events	4
2.2	Compared Parameters	5
2.3	Aspect	6
2.4	Star Slots	9
2.4.1	Slot 3	9
2.4.2	Slot 4	10
2.4.3	Slot 5	11
2.4.4	Slot 6	12
2.4.5	Slot 7	13
2.5	FID Slots	14
2.5.1	Slot 0	14
2.5.2	Slot 1	15
2.5.3	Slot 2	16
3	Point Sources	17
A	Summary	18
A.1	Status	18
A.2	Comments	18

1 Front

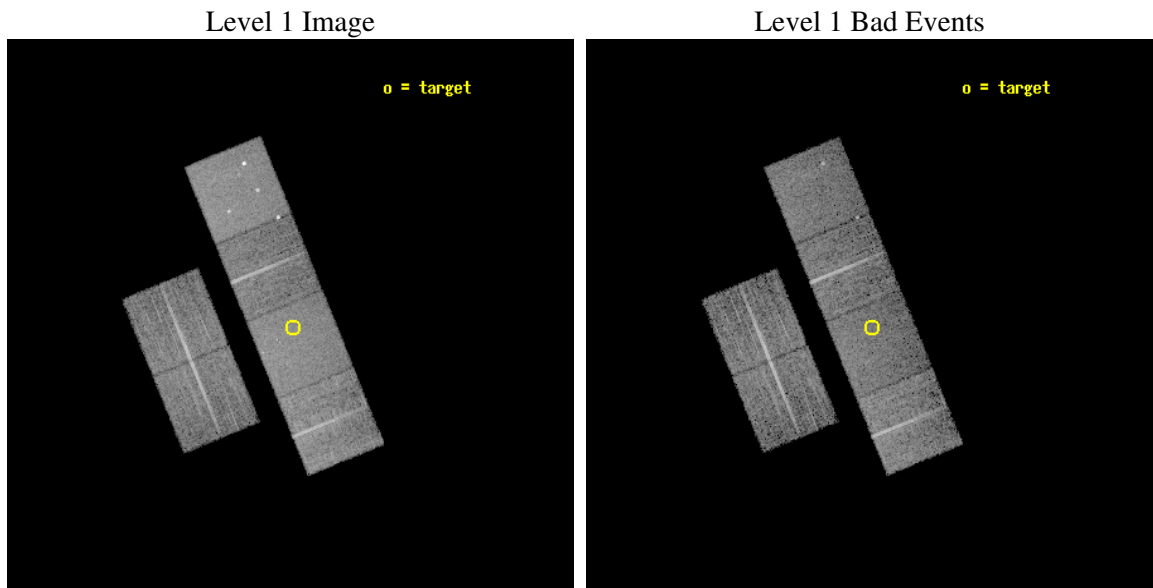
seq_num	900077
obs_id	2250
title	THE NATURE OF NARROW-LINE, FIR-LUMINOUS, X-RAY GALAXIES
observer	PROFESSOR TOM SHANKS
object	F864X:052
dtcycle	0
cycle	P
ra_targ	206.030417
dec_targ	-0.475833
ra_nom	206.03572491035
dec_nom	-0.46758974326374
roll_nom	67.8368691112
revision	2
ontime	9753.6000090837
livetime	9630.0940528559
ontime2	9753.6000090837
ontime3	9753.6000090837
ontime5	9753.6000090837
ontime6	9753.6000090837
ontime7	9753.6000090837
ontime8	9750.3591884375
l2events	86912



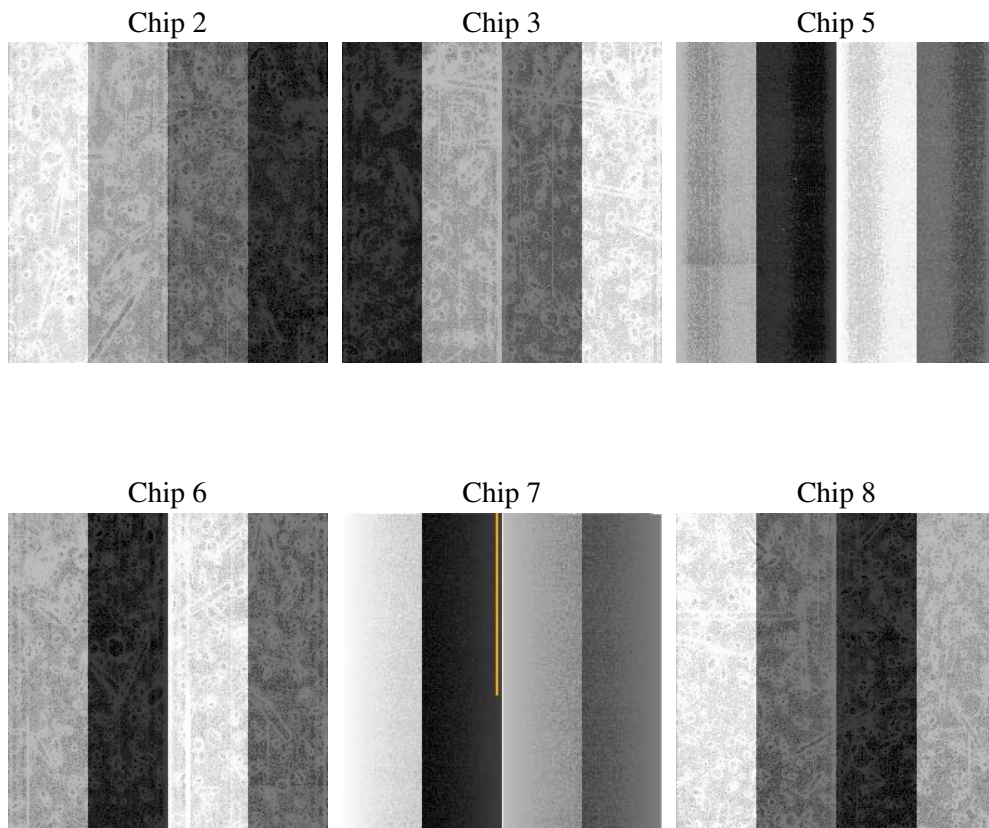
2 OBI

2.1 OBI

2.1.1 Images



2.1.2 Bias



2.1.3 Parameters

obi_num	0
ascdsver	7.6.9
caldbver	3.2.3
date	2006-11-02T13:07:11
revision	2

sched_exp_time	10000.000000
ontime	9758.643084079
ontime2	9758.643084079
ontime3	9758.643084079
ontime5	9758.643084079
ontime6	9758.643084079
ontime7	9758.643084079
ontime8	9755.4021537453
l1events	411162

2.1.4 Events

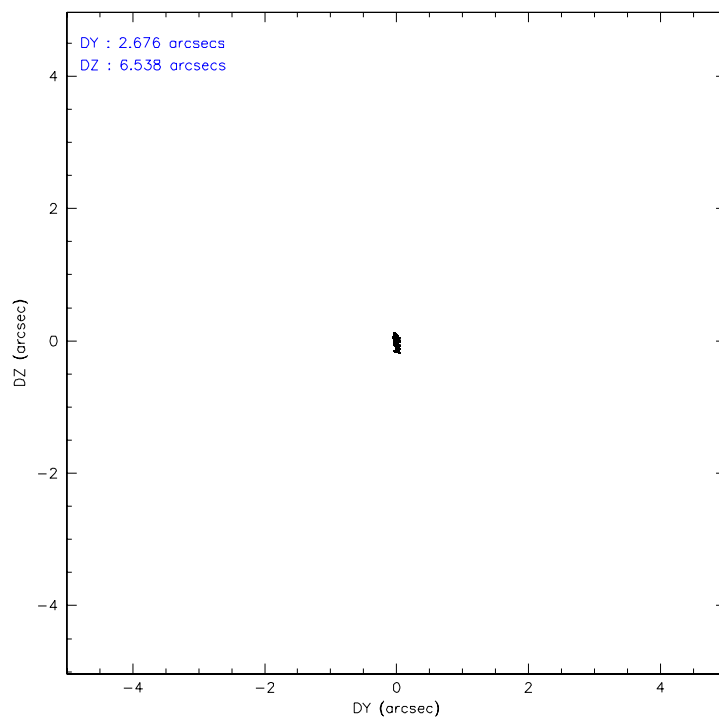
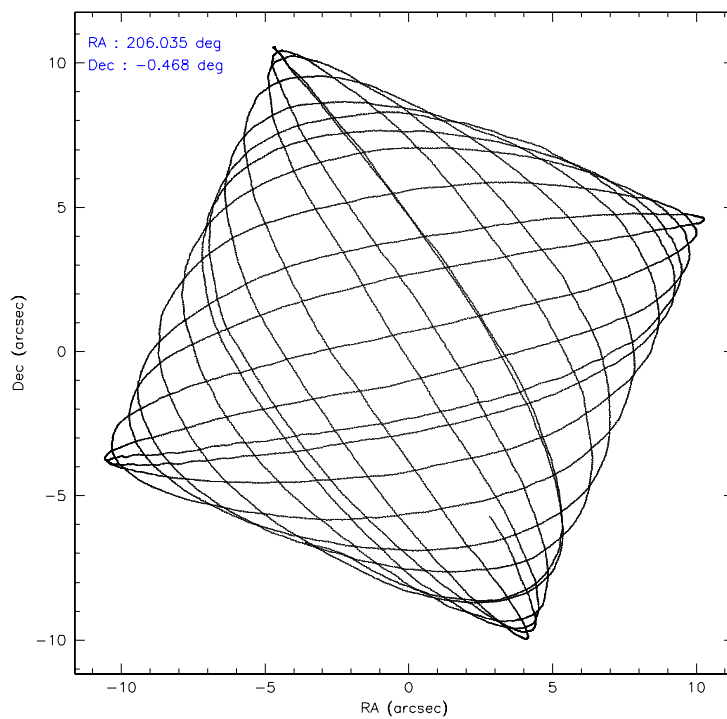
	ccd 2	ccd 3	ccd 5	ccd 6	ccd 7	ccd 8
level 1 events	59728	57624	84256	58382	75033	76139
rejected events	52976	50826	45955	51497	45644	61162
rejected %	88%	88%	54%	88%	60%	80%

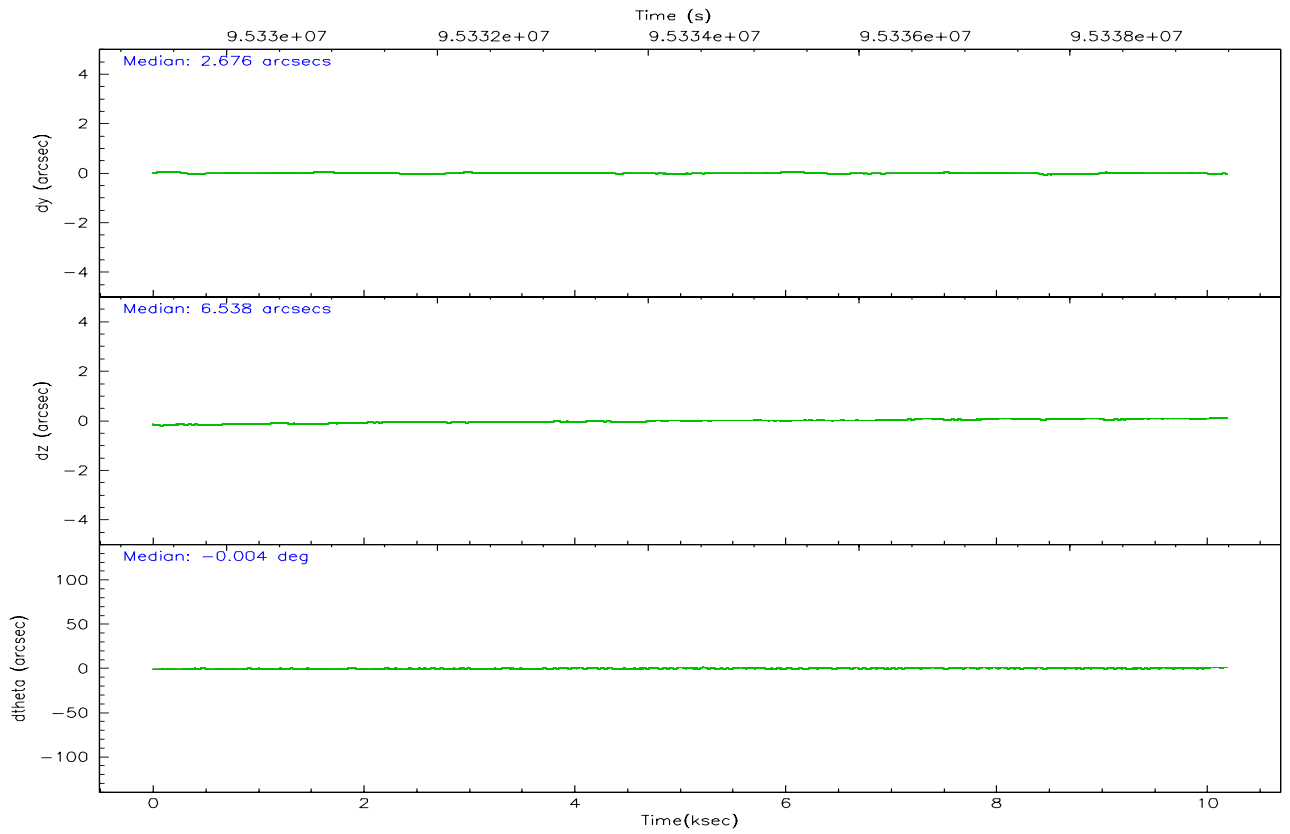
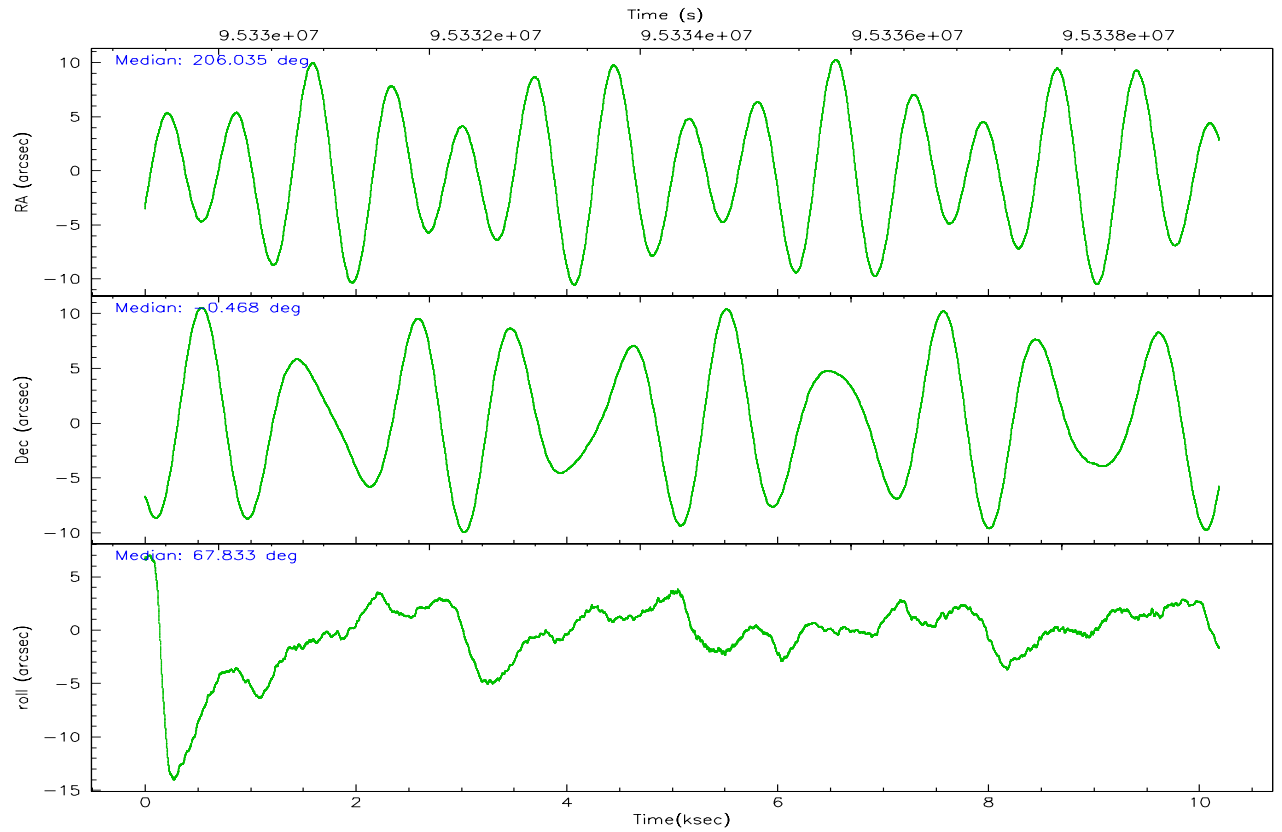
	ccd 2	ccd 3	ccd 5	ccd 6	ccd 7	ccd 8
grade 0 events	2855	2882	4721	2846	2045	4821
	4%	5%	5%	4%	2%	6%
grade 1 events	22	23	187	27	54	38
	0%	0%	0%	0%	0%	0%
grade 2 events	1441	1415	11112	1400	7083	3195
	2%	2%	13%	2%	9%	4%
grade 3 events	607	655	919	651	1530	1601
	1%	1%	1%	1%	2%	2%
grade 4 events	657	624	850	657	1541	1520
	1%	1%	1%	1%	2%	1%
grade 5 events	1980	2276	4026	2410	4974	3017
	3%	3%	4%	4%	6%	3%
grade 6 events	1193	1223	20717	1333	17205	3843
	1%	2%	24%	2%	22%	5%
grade 7 events	50973	48526	41724	49058	40601	58104
	85%	84%	49%	84%	54%	76%

2.2 Compared Parameters

Parameter	Planned	Actual	Parameter	Planned	Actual
Instrument	ACIS	ACIS	Obspar format version number	6	6
Detector	ACIS-235678	ACIS-235678	Obspar file type	PREDICTED	ACTUAL
Grating	NONE	NONE	Obspar update status	NONE	UPDATED
Data mode	FAINT	FAINT	Number of optional ACIS chips dropped	0	0
Observation mode	POINTING	POINTING	On-chip summing requested	N	N
Pointing RA	206.039662	206.0357249103522	Subarray requested	NONE	NONE
Pointing Dec	-0.494576	-0.4675897432637391	Alternating exposures requested	N	N
Pointing Roll	67.680274	67.83686911119977	Primary exposure time	0.000000	3.2
SIM focus pos (mm)	-0.684267	-0.6828225247311905			
SIM defocus (mm)	0	0.001444936568705701			
SIM translation stage pos (mm)	-190.132523	-190.1425803651734			
SIM translation stage offset (mm)	0	0.01005778216563158			
Observation start time	95329491.184000	95329115.08810399			
Observation start date	2001-01-08T08:23:47	2001-01-08T08:18:35			
Observation end time	95339491.184000	95339624.926007			
Observation end date	2001-01-08T11:10:27	2001-01-08T11:13:44			
Read mode	TIMED	TIMED			

2.3 Aspect



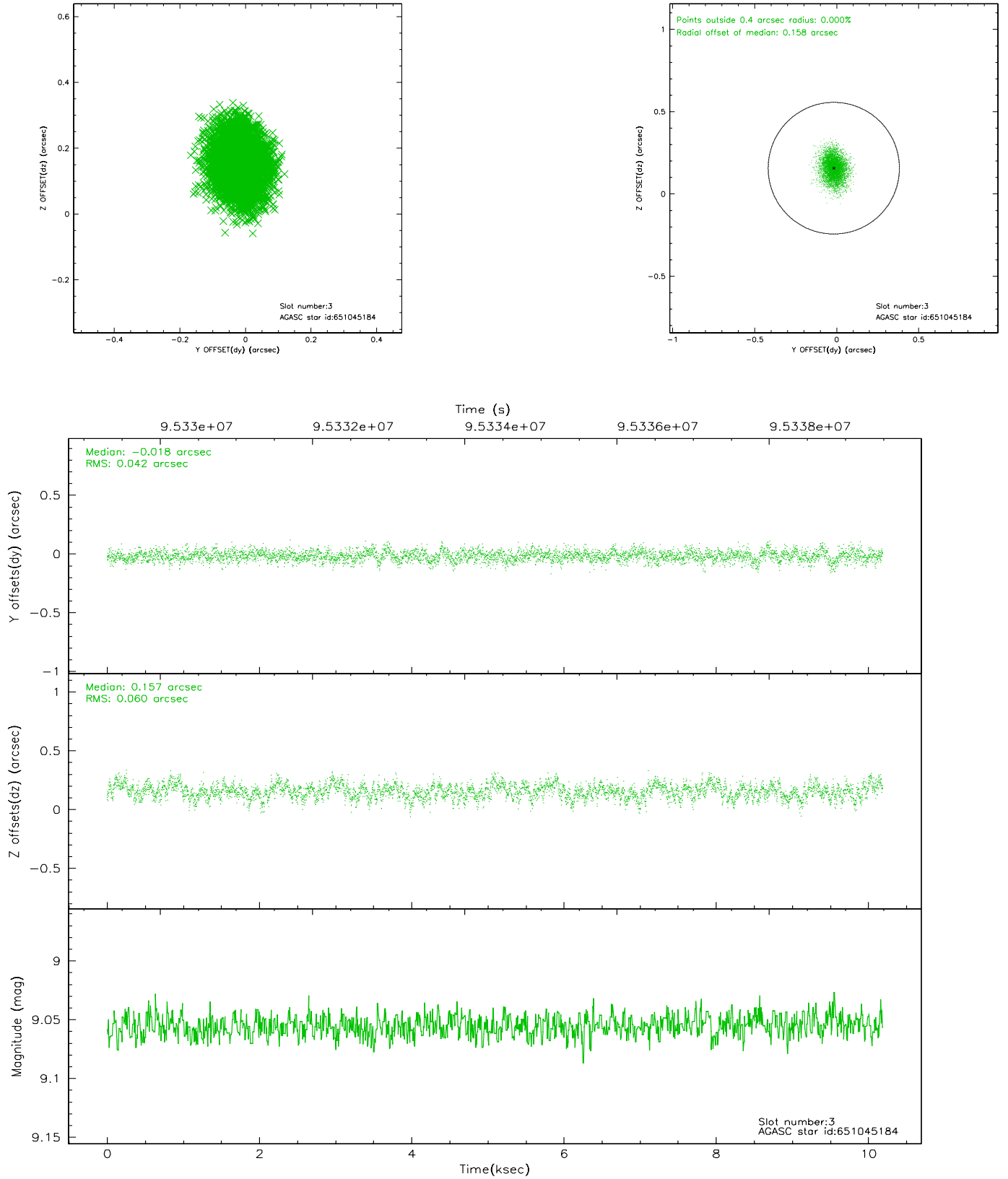


Slot Statistics

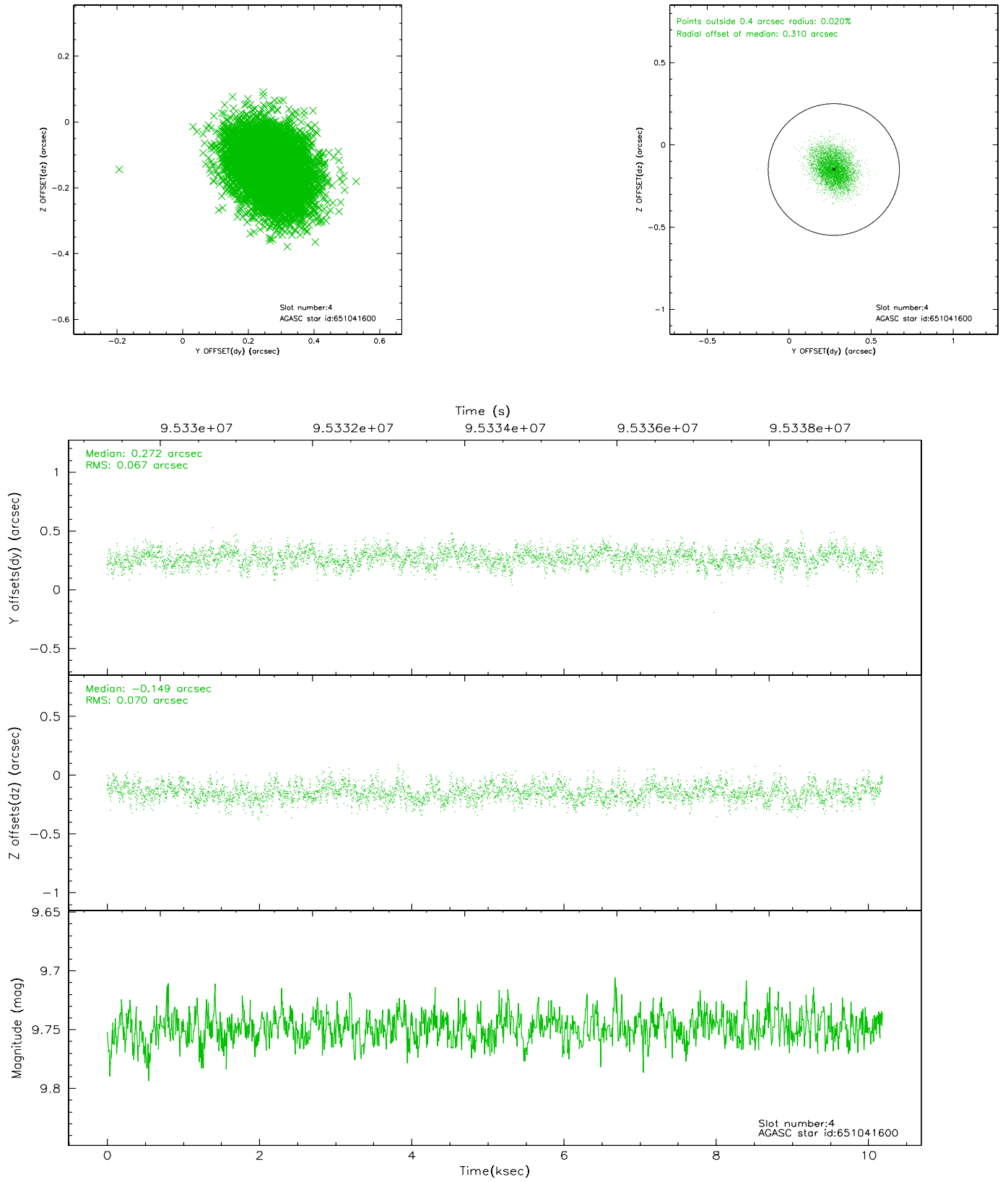
slot	status	id	mag	n_pts	med_dy	med_dz	dr1	dr2	ra	dec	mean_y	mean_z
0	FID	ACIS-S-2	7.12	2485	-0.008	0.040	0.008	0.012	0.000000	0.000000	-755.31	-1727.59
1	FID	ACIS-S-4	7.20	2486	-0.083	-0.007	0.005	0.010	0.000000	0.000000	2157.65	180.32
2	FID	ACIS-S-5	7.24	2486	0.059	-0.024	0.006	0.010	0.000000	0.000000	-1807.42	174.56
3	GUIDE	651045184	9.06	4970	-0.018	0.157	0.077	0.127	206.266135	-0.772896	-616.13	-1135.13
4	GUIDE	651041600	9.75	4968	0.272	-0.149	0.103	0.168	205.528560	-0.868420	-1942.61	1189.77
5	GUIDE	651041072	9.82	4971	-0.135	-0.118	0.105	0.169	205.728858	-0.270240	322.64	1341.36
6	GUIDE	40380232	9.75	4968	-0.256	-0.096	0.115	0.188	205.925897	0.181116	2095.49	1302.47
7	GUIDE	651042528	10.25	4970	0.136	0.205	0.124	0.201	206.154197	-0.918582	-1253.75	-961.26

2.4 Star Slots

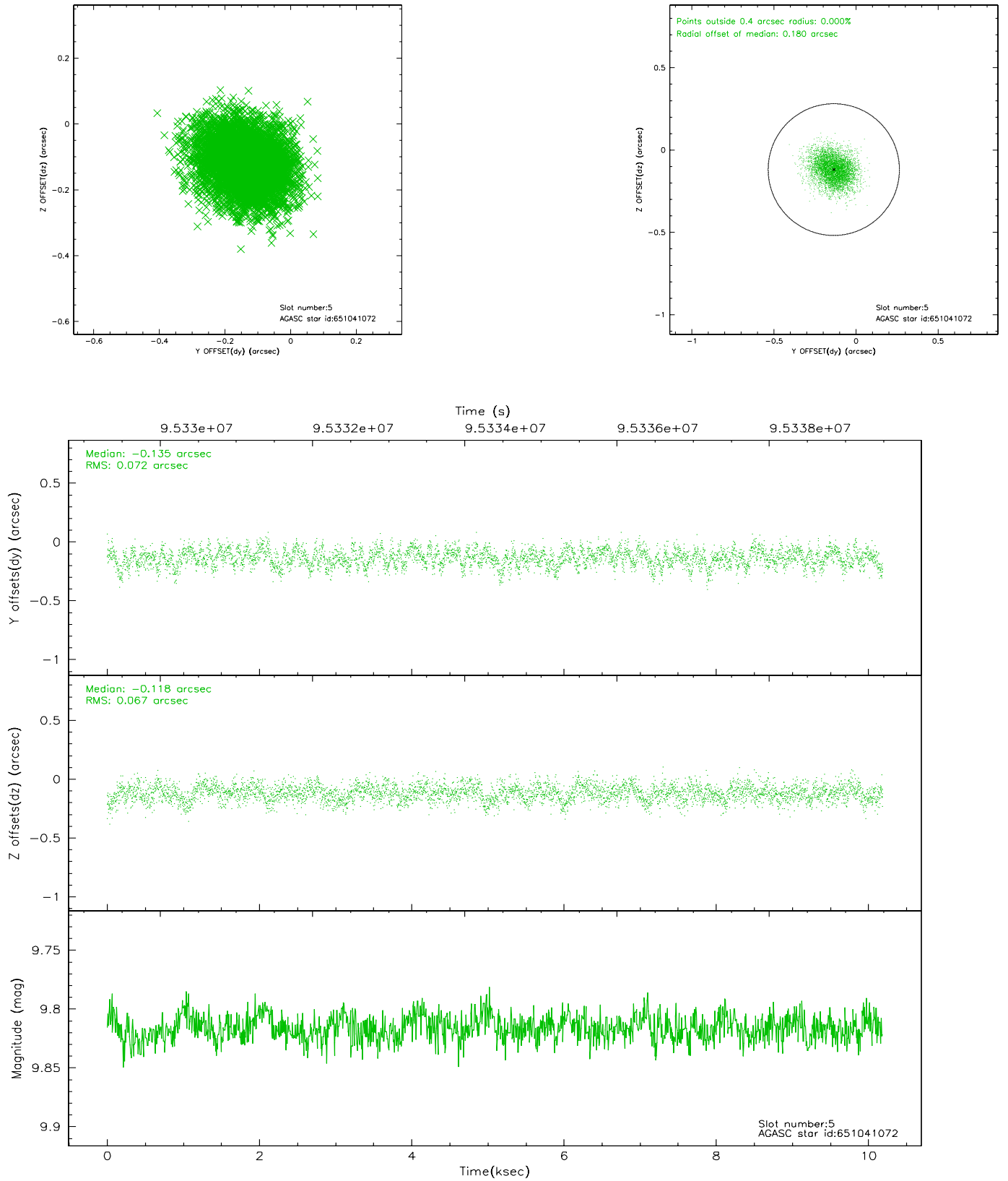
2.4.1 Slot 3



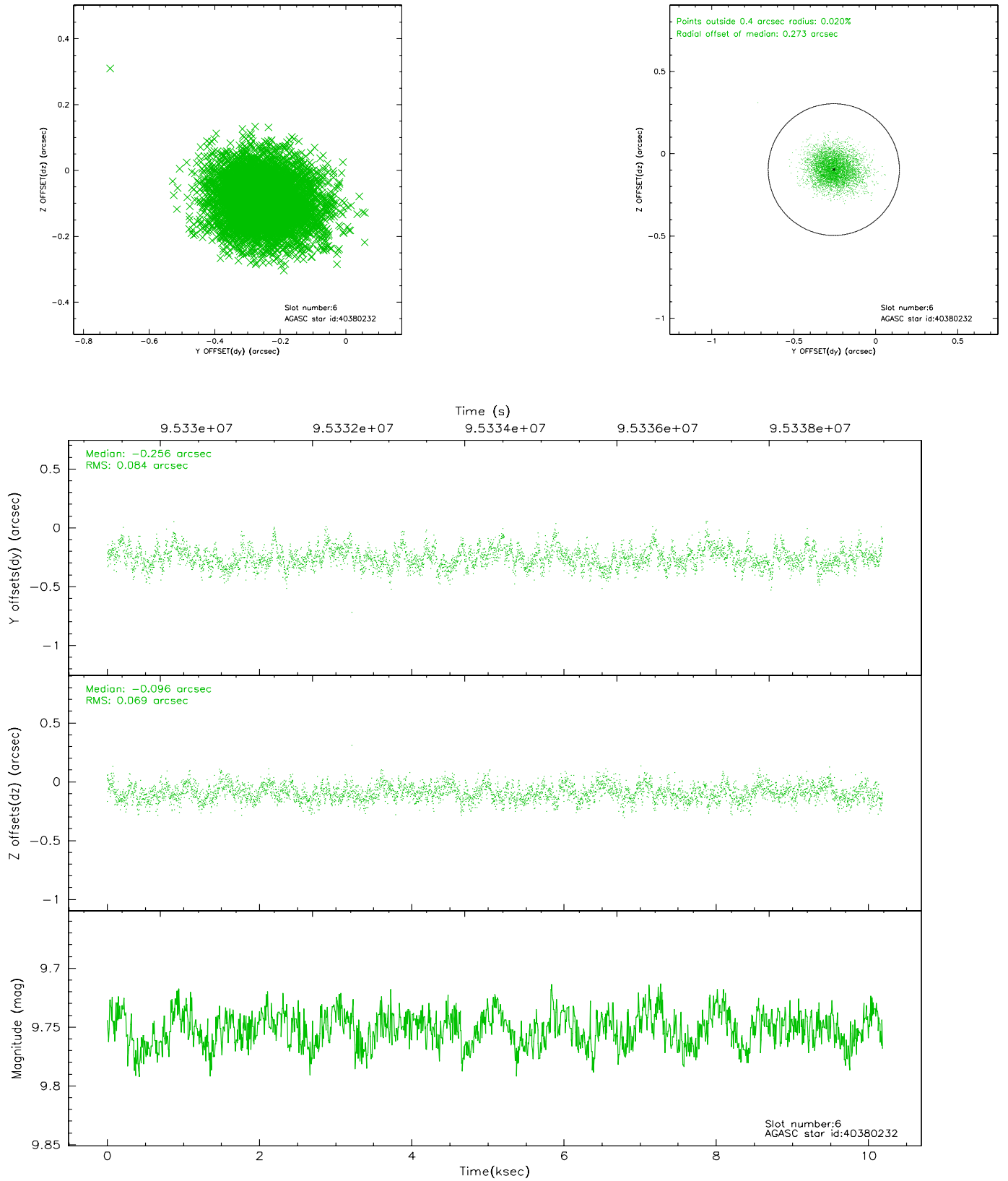
2.4.2 Slot 4



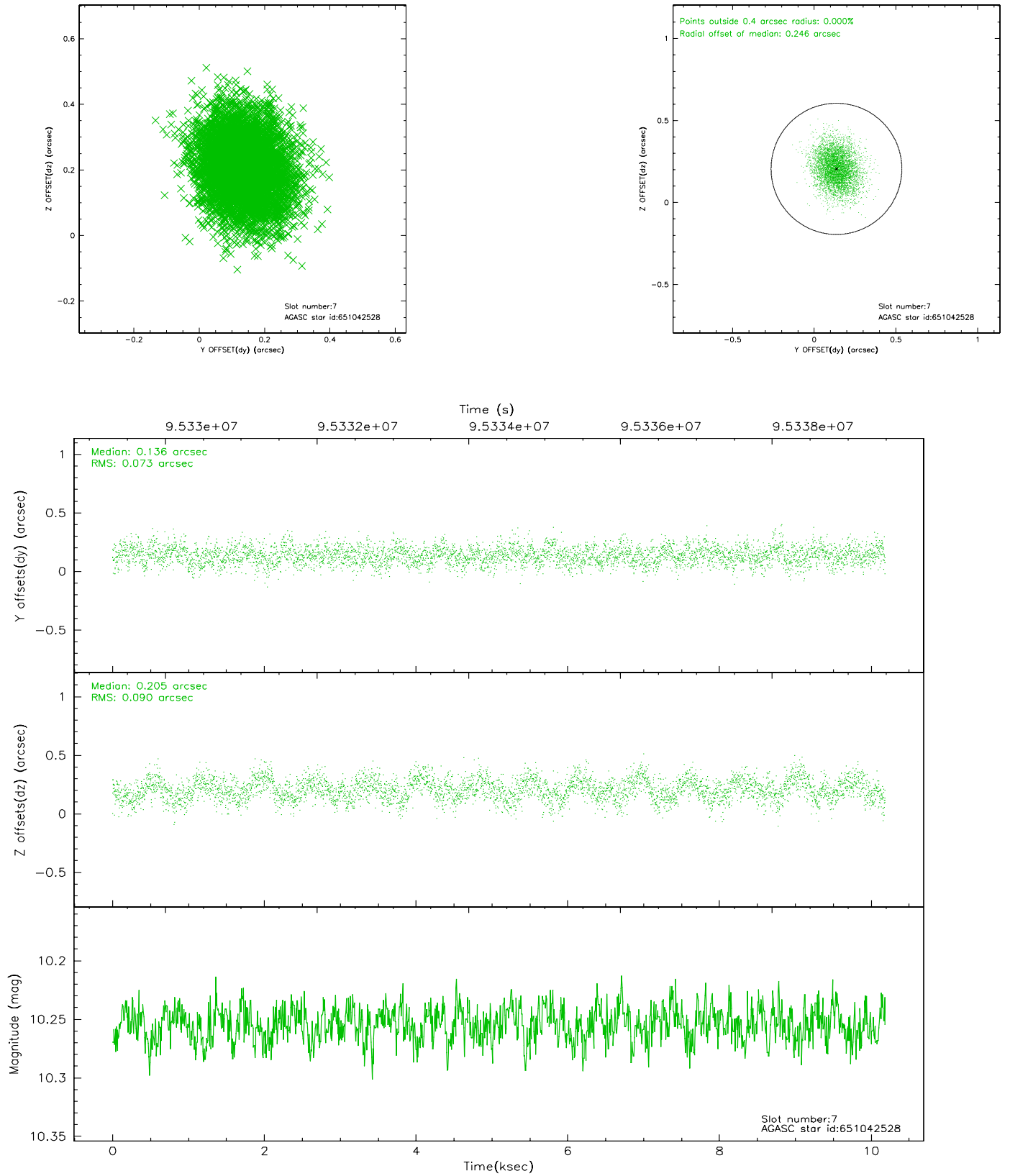
2.4.3 Slot 5



2.4.4 Slot 6

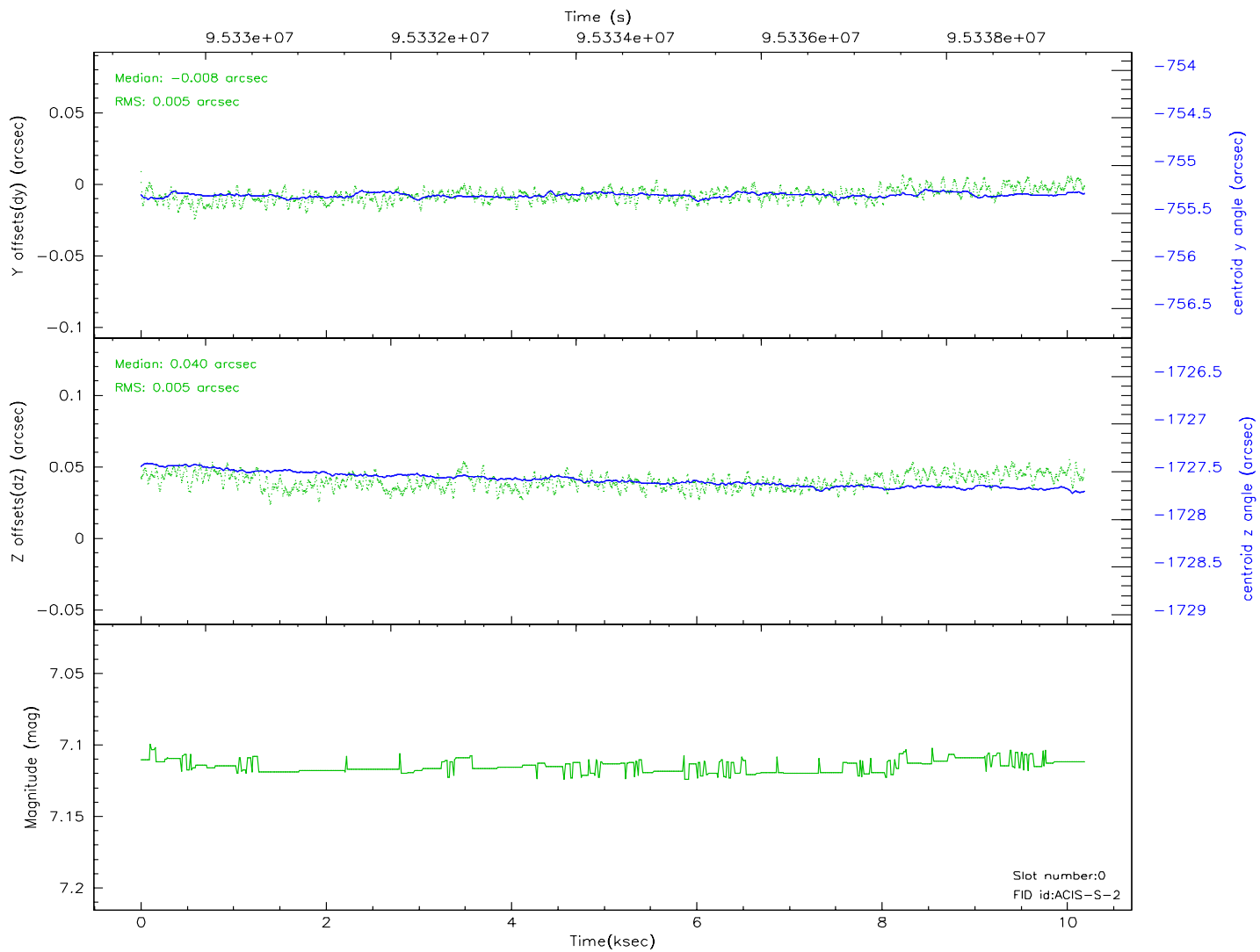
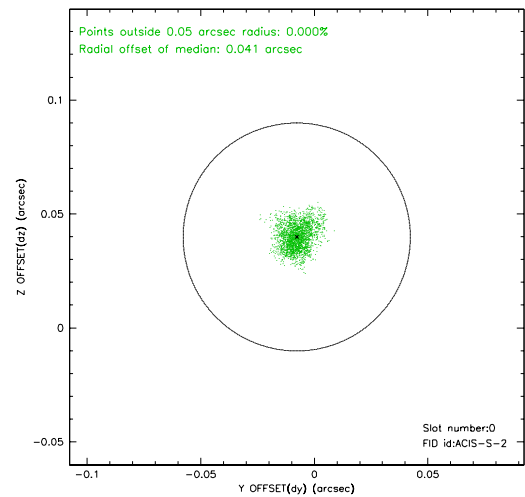
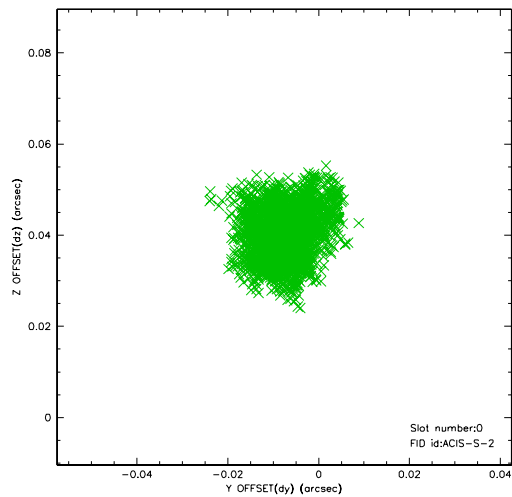


2.4.5 Slot 7

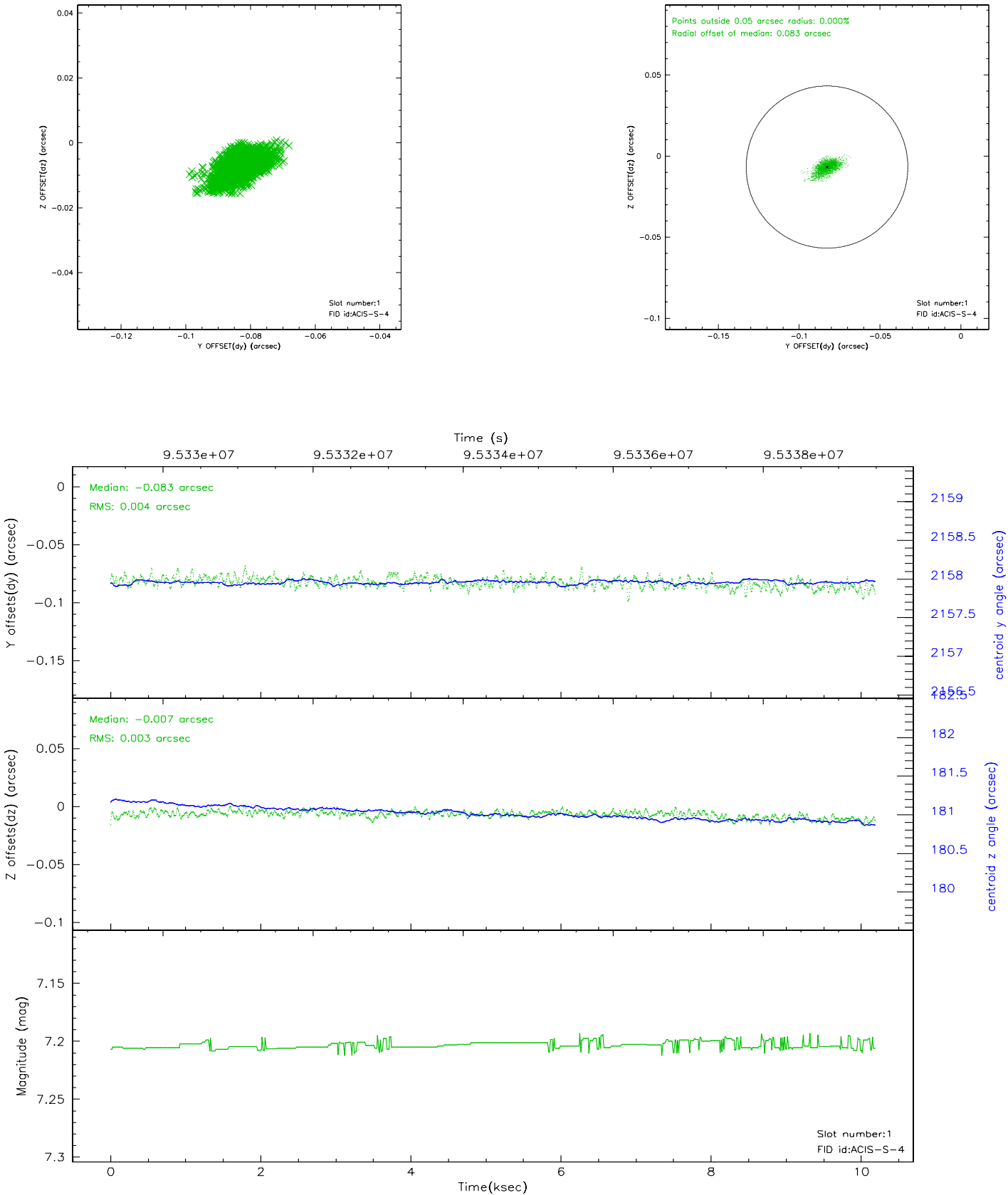


2.5 FID Slots

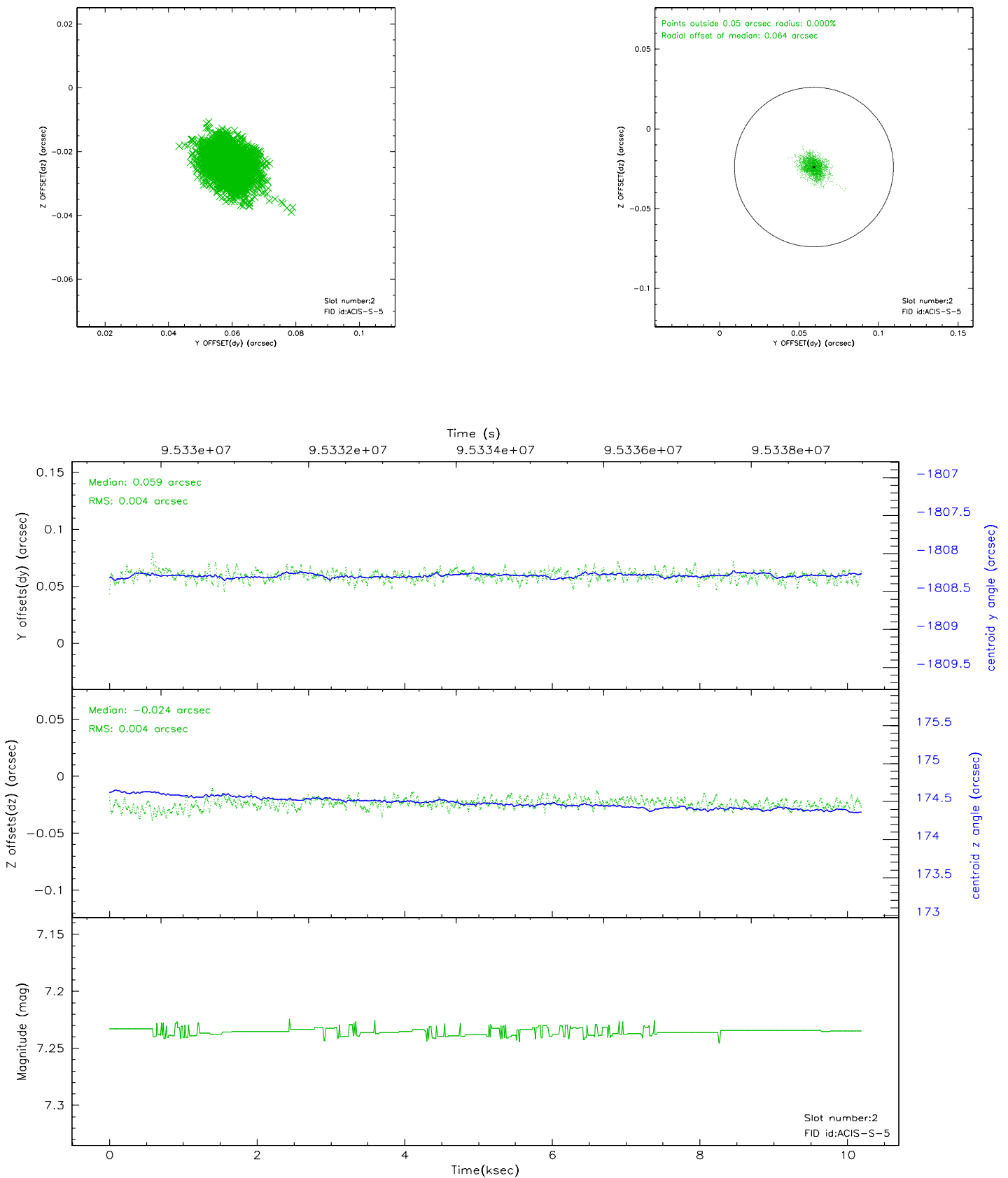
2.5.1 Slot 0



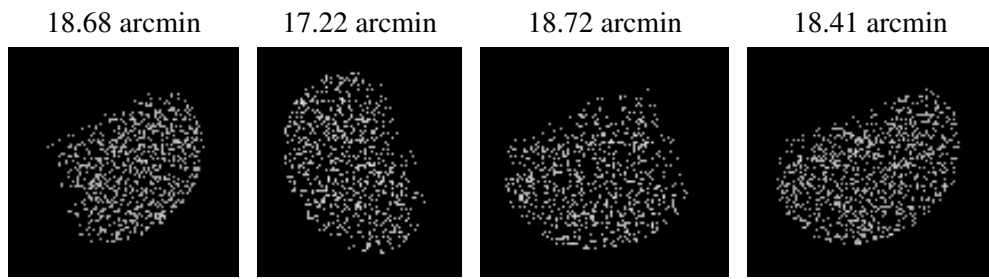
2.5.2 Slot 1



2.5.3 Slot 2



3 Point Sources



A Summary

A.1 Status

V&V Scientist	Jen Lauer
V&V Date (YYYY-MM-DD)	2006.11.02
V&V Edition	1
V&V Disposition and Status	OK
V&V Charge Time	9.753

A.2 Comments