

V&V Reference Report

L2 ASCDS Version : 7.6.9

Observation 2140 - L2 Version 001
Chandra X-Ray Center

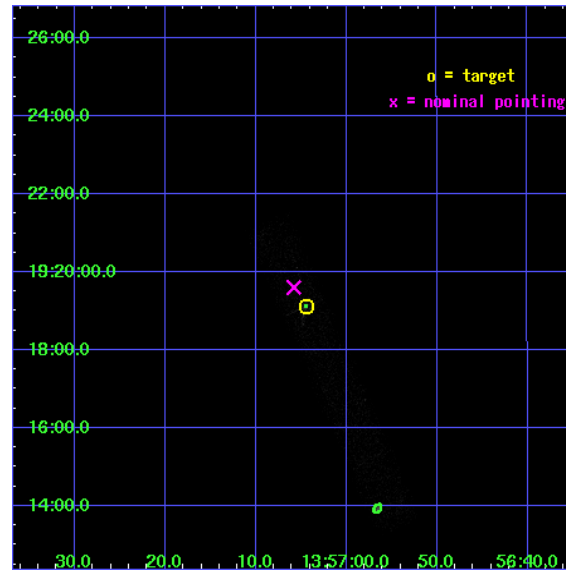
L2 Processing Date : Nov 2 2006

Contents

1	Front	2
2	OBI	3
2.1	OBI	3
2.1.1	Images	3
2.1.2	Bias	3
2.1.3	Parameters	4
2.1.4	Events	4
2.2	Compared Parameters	5
2.3	Aspect	6
2.4	Star Slots	9
2.4.1	Slot 3	9
2.4.2	Slot 4	10
2.4.3	Slot 5	11
2.4.4	Slot 6	12
2.4.5	Slot 7	13
2.5	FID Slots	14
2.5.1	Slot 0	14
2.5.2	Slot 1	15
2.5.3	Slot 2	16
3	Point Sources	17
A	Summary	18
A.1	Status	18
A.2	Comments	18

1 Front

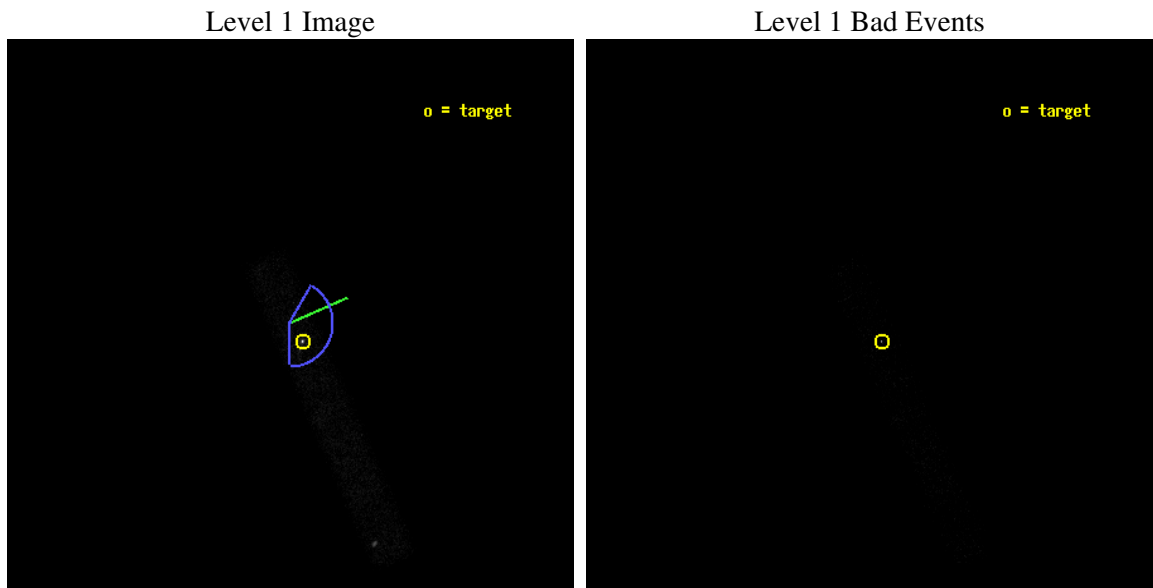
seq_num	700330
obs_id	2140
title	AN UNBIASED SURVEY OF X-RAY AND OPTICAL EMISSION FROM EXTENDED RADIO JETS IN AGN
observer	Dr. Rita Sambruna
object	1354+195
dtcycle	0
cycle	P
ra_targ	209.268333
dec_targ	19.318611
ra_nom	209.27418647953
dec_nom	19.326752194383
roll_nom	66.221140261582
revision	2
ontime	9984.8001487851
livetime	9055.6866939825
ontime7	9984.8001487851
l2events	11355



2 OBI

2.1 OBI

2.1.1 Images



2.1.2 Bias

Chip 7



2.1.3 Parameters

obi_num	0
ascdsver	7.6.9
caldbver	3.2.3
date	2006-11-02T13:26:06
revision	2

sched_exp_time	9500.000000
ontime	10348.424696922
ontime7	10348.424696922
l1events	17911

2.1.4 Events

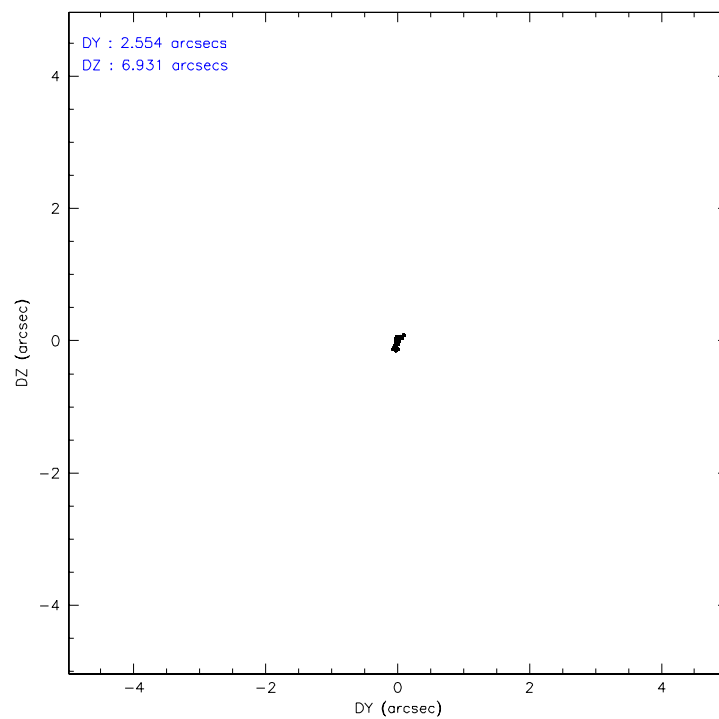
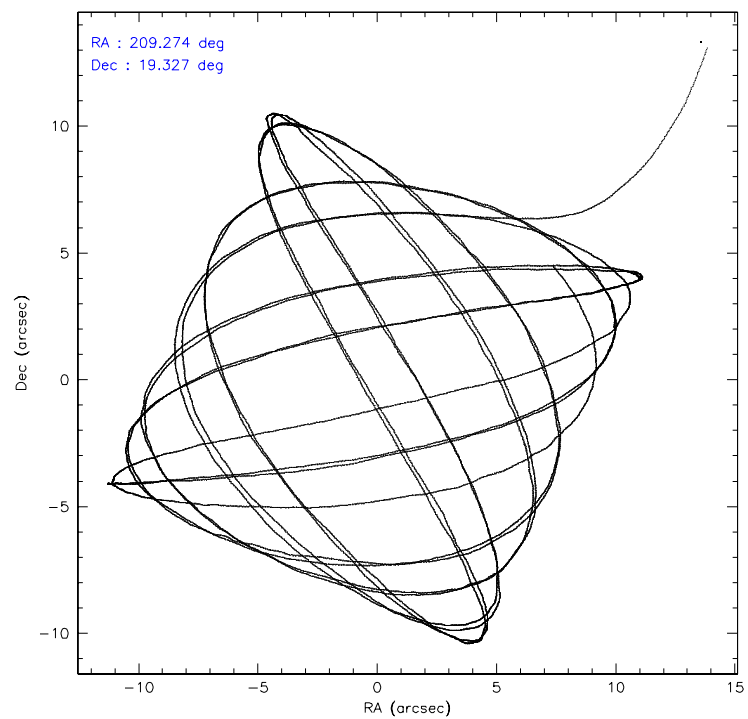
	ccd 7
level 1 events	17911
rejected events	6362
rejected %	35%

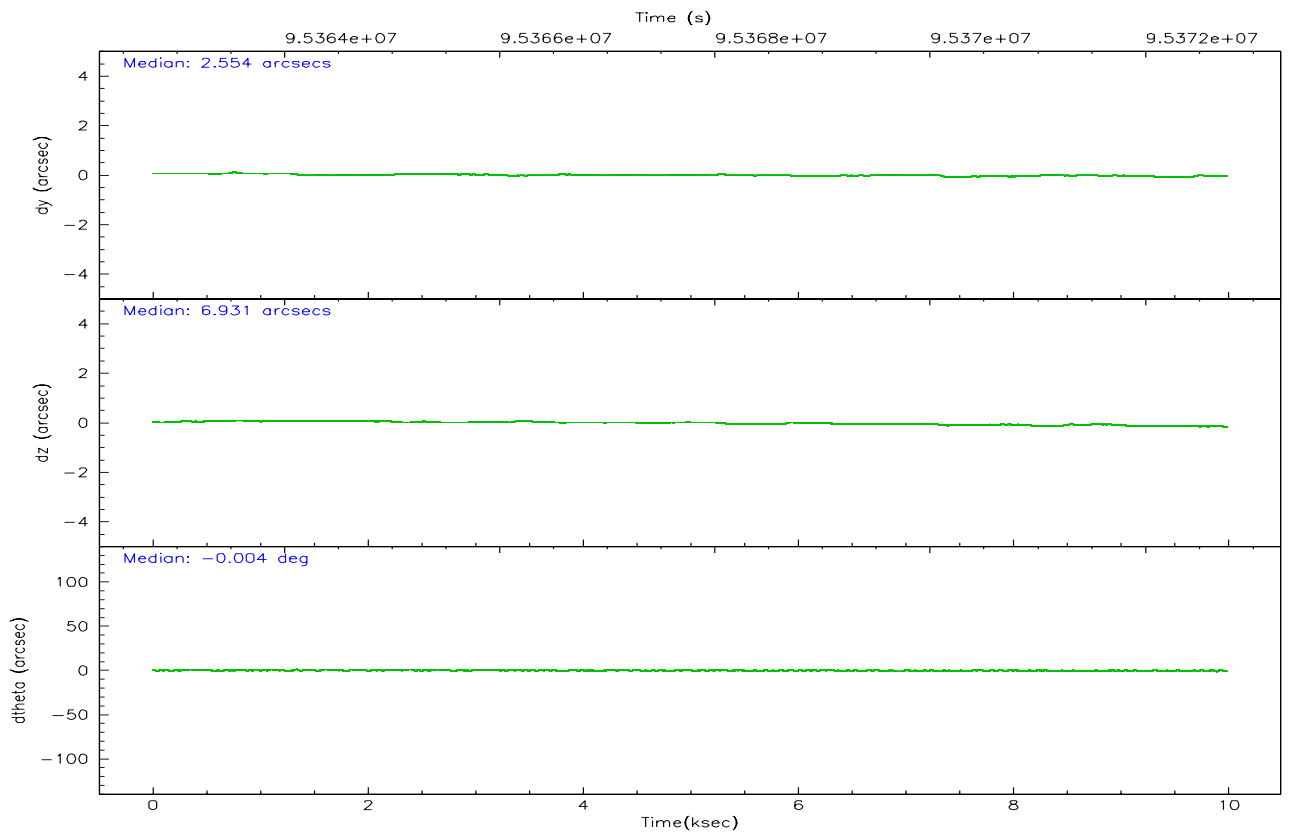
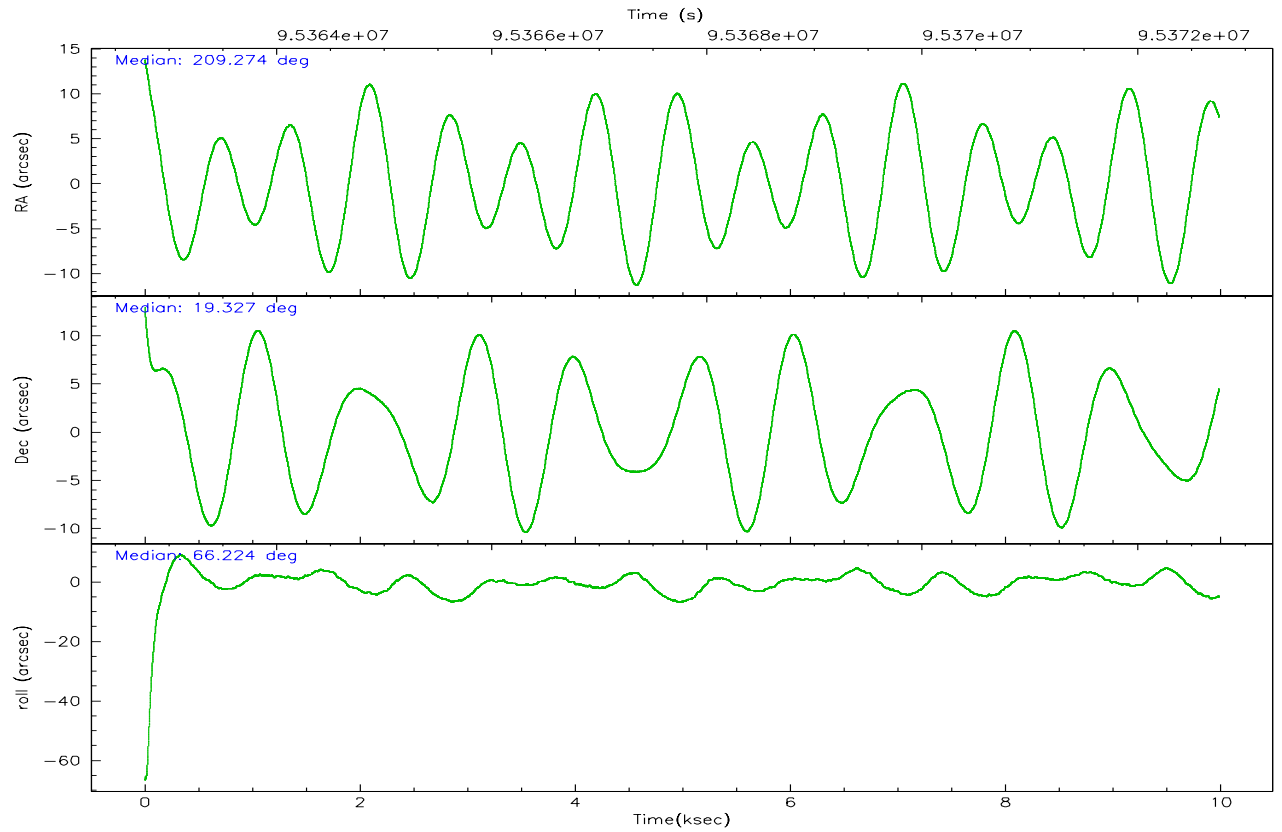
	ccd 7
grade 0 events	2598
	14%
grade 1 events	52
	0%
grade 2 events	2836
	15%
grade 3 events	1326
	7%
grade 4 events	1289
	7%
grade 5 events	884
	4%
grade 6 events	3833
	21%
grade 7 events	5093
	28%

2.2 Compared Parameters

Parameter	Planned	Actual	Parameter	Planned	Actual
Instrument	ACIS	ACIS	Obspar format version number	6	6
Detector	ACIS-7	ACIS-7	Obspar file type	PREDICTED	ACTUAL
Grating	NONE	NONE	Obspar update status	NONE	UPDATED
Data mode	FAINT	FAINT	Number of optional ACIS chips dropped	0	0
Observation mode	POINTING	POINTING	On-chip summing requested	N	N
Pointing RA	209.277557	209.2741864795323	Subarray requested	1/8	1/8
Pointing Dec	19.299613	19.32675219438286	Subarray start row	0	449
Pointing Roll	66.063464	66.22114026158241	Subarray row count	1024	128
Roll angle	105.000000	105.000000	Alternating exposures requested	N	N
Roll tolerance	74.000000	74.000000	Primary exposure time	0.000000	0.4
Roll constraint allows 180D rotation	N	N			
SIM focus pos (mm)	-0.684267	-0.6828225247311905			
SIM defocus (mm)	0	0.001444936568705701			
SIM translation stage pos (mm)	-190.132523	-190.1425803651734			
SIM translation stage offset (mm)	0	0.01005778216563158			
Observation start time	95363264.184000	95362144.68937001			
Observation start date	2001-01-08T17:46:40	2001-01-08T17:29:04			
Observation end time	95372764.184000	95373319.752299			
Observation end date	2001-01-08T20:25:00	2001-01-08T20:35:19			
Read mode	TIMED	TIMED			

2.3 Aspect



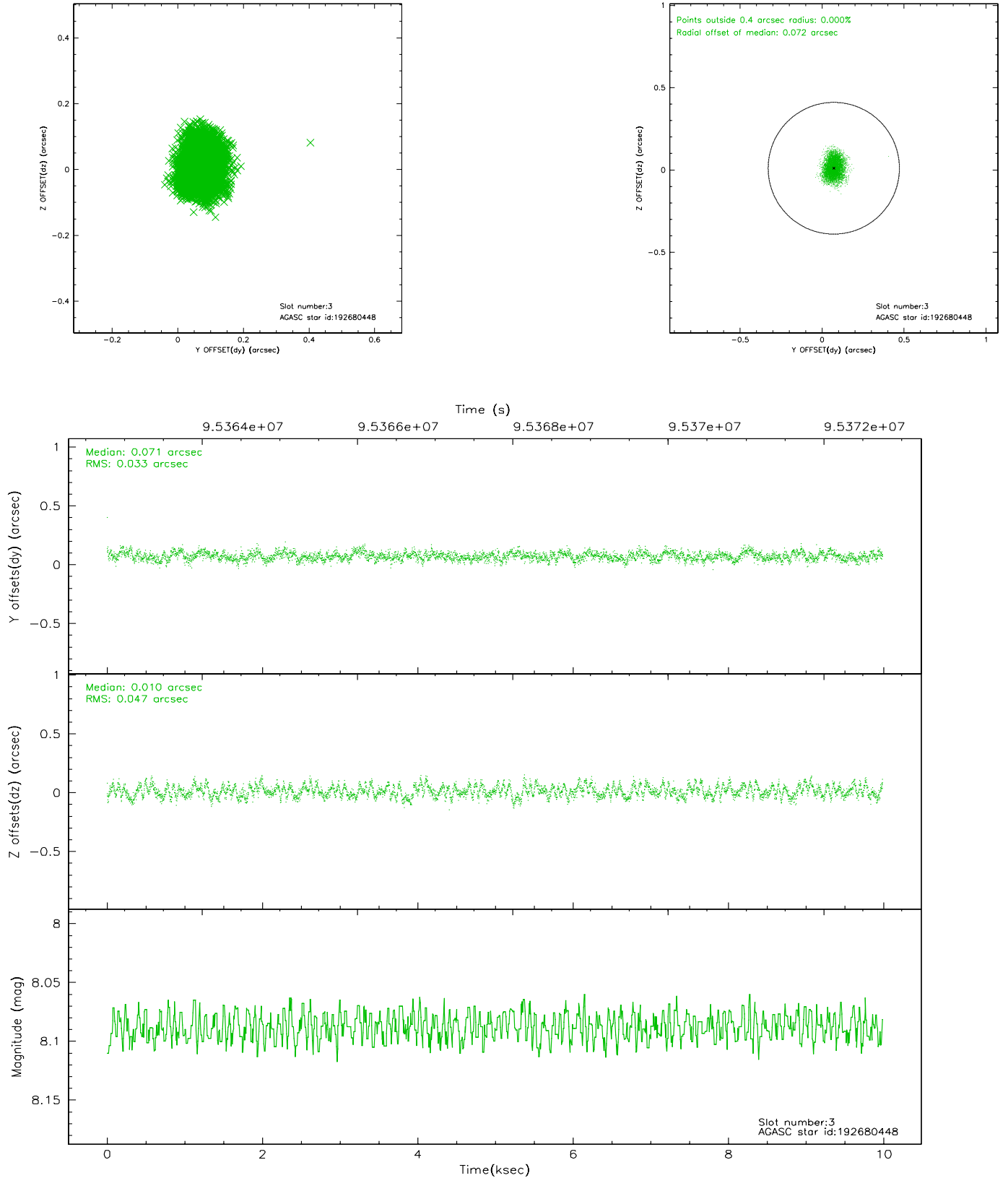


Slot Statistics

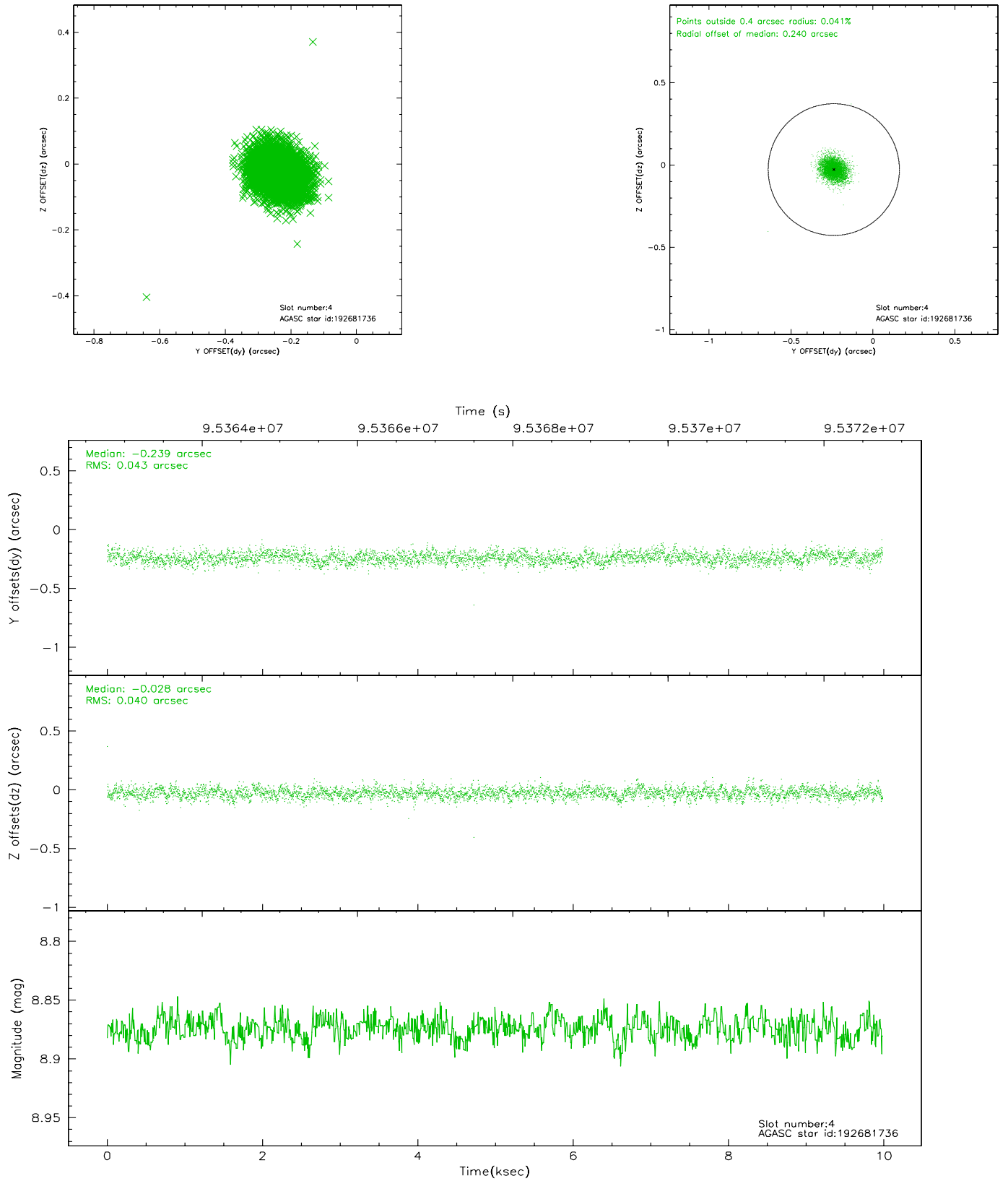
slot	status	id	mag	n_pts	med_dy	med_dz	dr1	dr2	ra	dec	mean_y	mean_z
0	FID	ACIS-S-2	7.11	2436	-0.006	0.026	0.006	0.010	0.000000	0.000000	-755.20	-1728.00
1	FID	ACIS-S-4	7.20	2436	-0.065	-0.004	0.005	0.008	0.000000	0.000000	2157.79	179.90
2	FID	ACIS-S-5	7.24	2436	0.040	-0.013	0.006	0.011	0.000000	0.000000	-1807.30	174.18
3	GUIDE	192680448	8.09	4871	0.071	0.010	0.062	0.099	209.583470	18.944304	-744.56	-1470.96
4	GUIDE	192681736	8.87	4872	-0.239	-0.028	0.061	0.100	209.530944	19.458283	872.23	-554.86
5	GUIDE	192675912	9.09	4871	0.097	-0.062	0.067	0.111	209.556745	19.286625	344.11	-886.17
6	GUIDE	192677632	9.21	4868	0.099	0.135	0.095	0.158	209.730671	18.841125	-879.30	-2080.26
7	GUIDE	192678056	9.45	4867	-0.028	-0.053	0.074	0.119	209.629569	19.594794	1457.59	-660.47

2.4 Star Slots

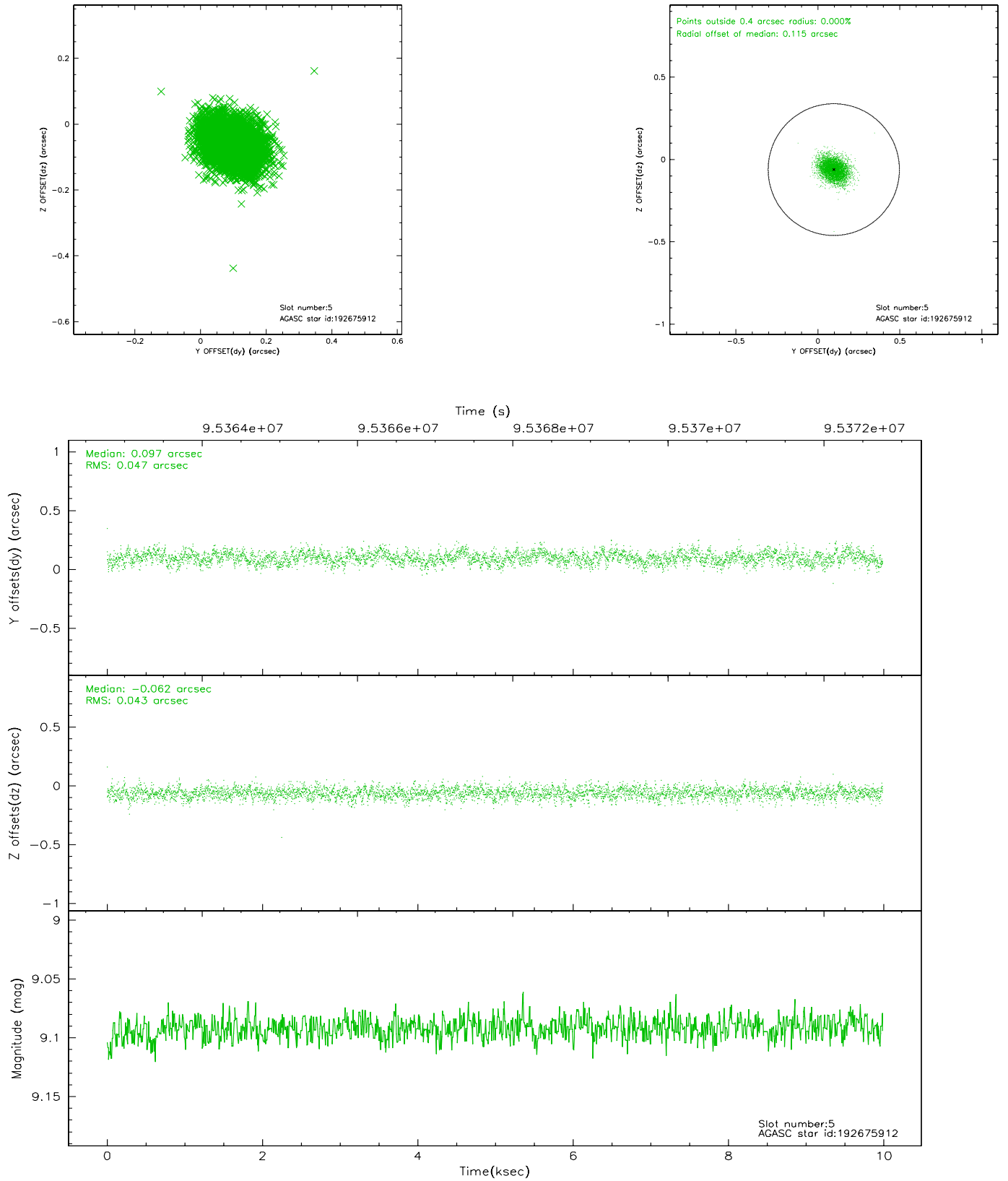
2.4.1 Slot 3



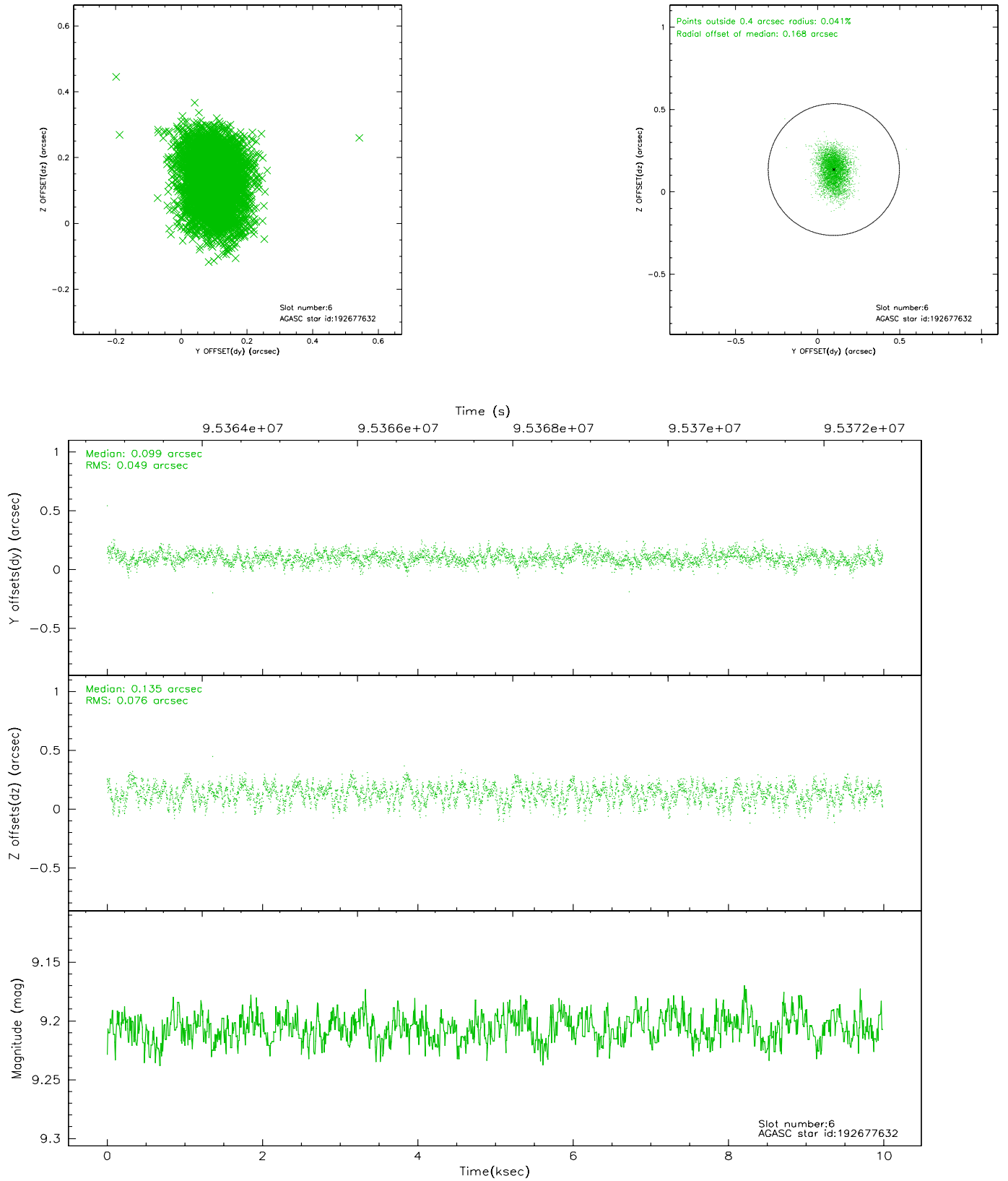
2.4.2 Slot 4



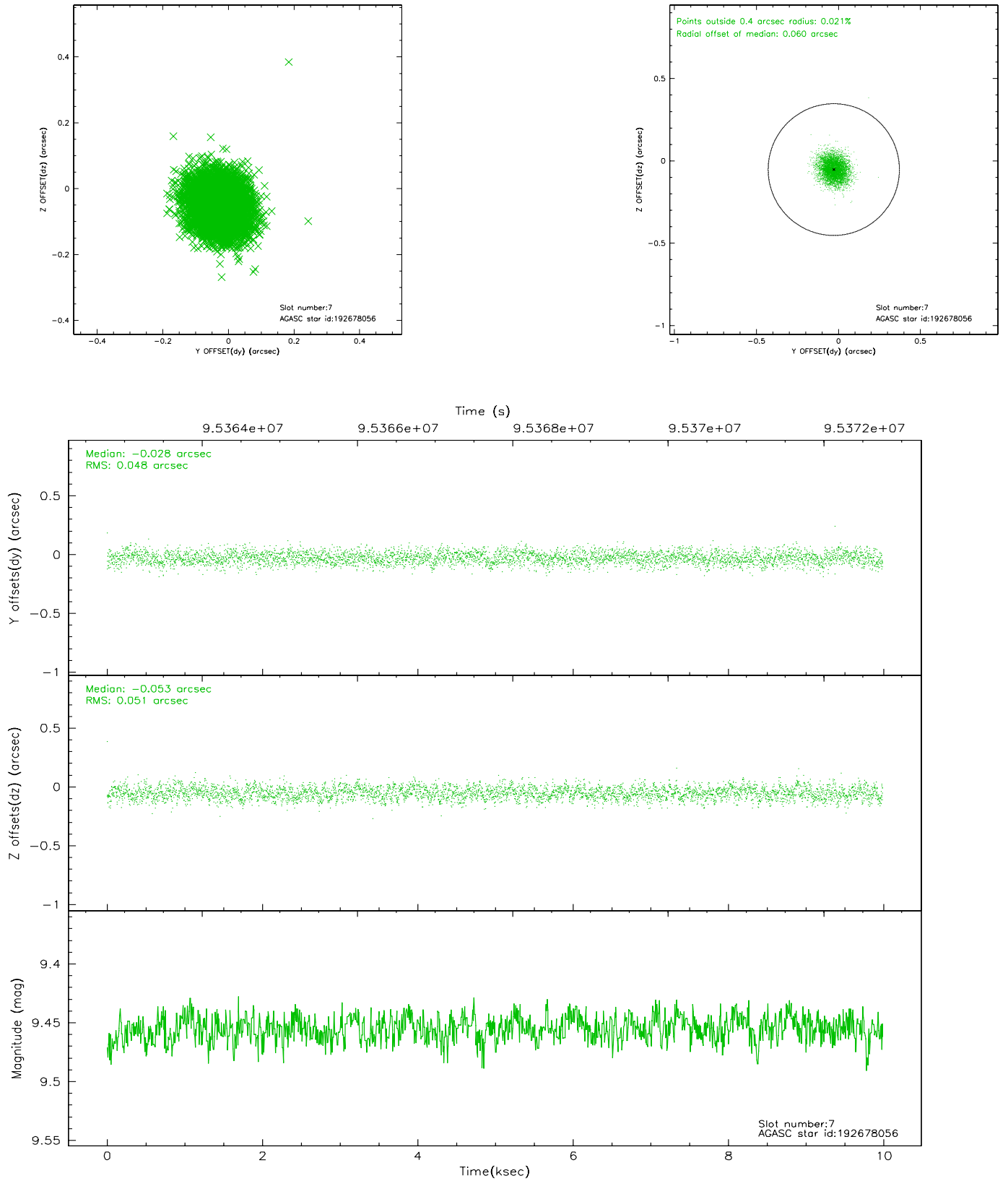
2.4.3 Slot 5



2.4.4 Slot 6

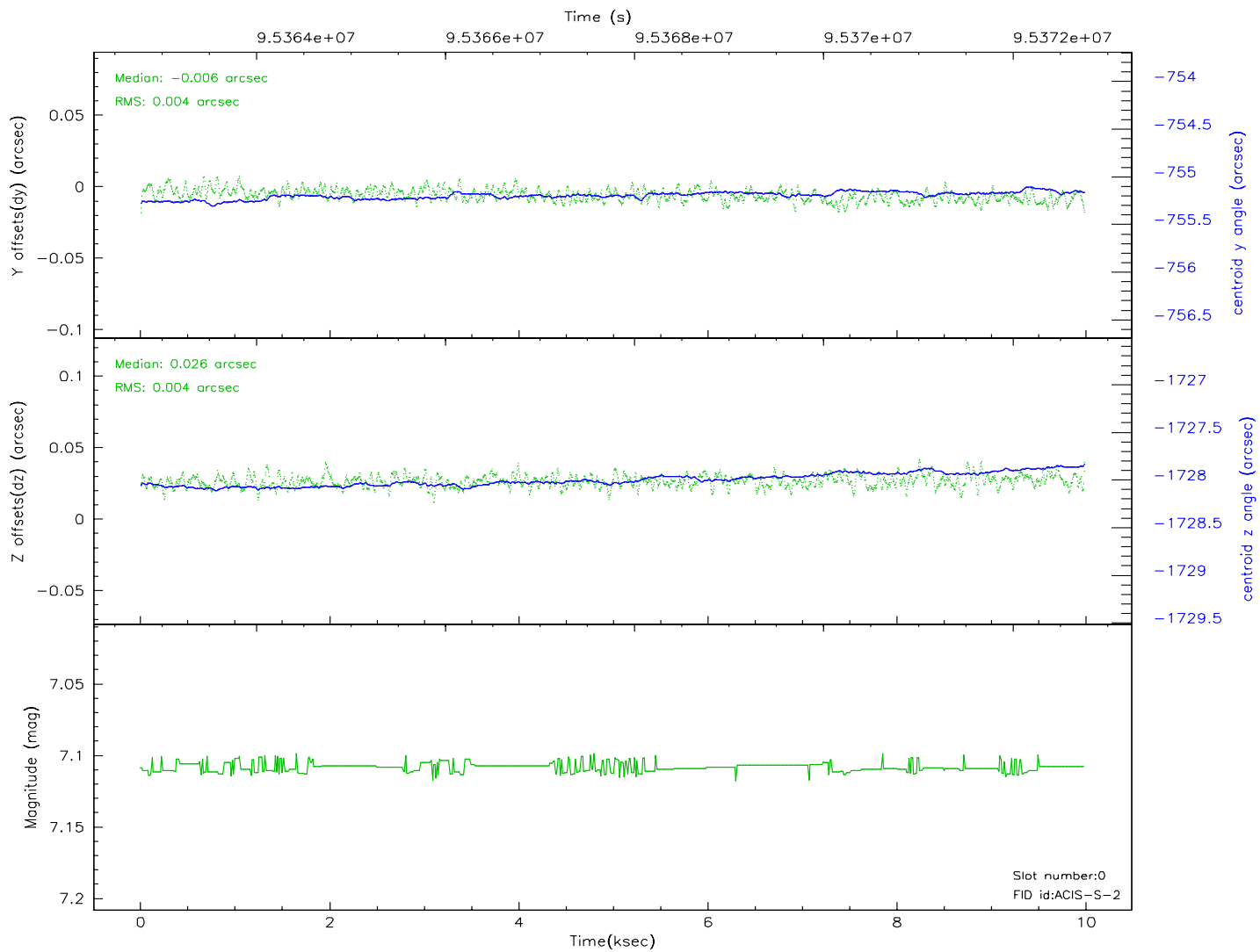
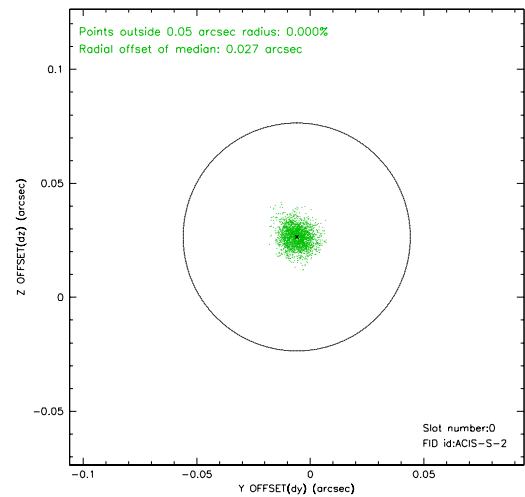
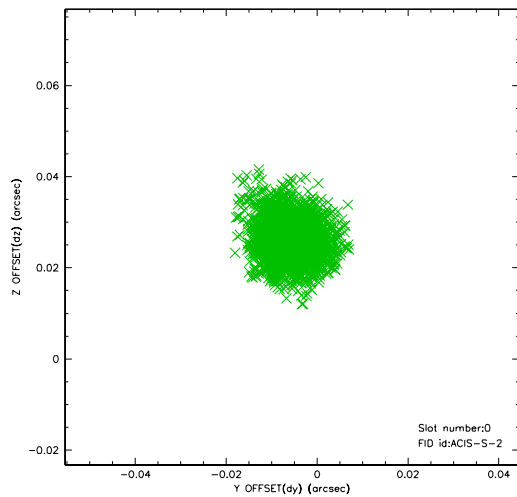


2.4.5 Slot 7

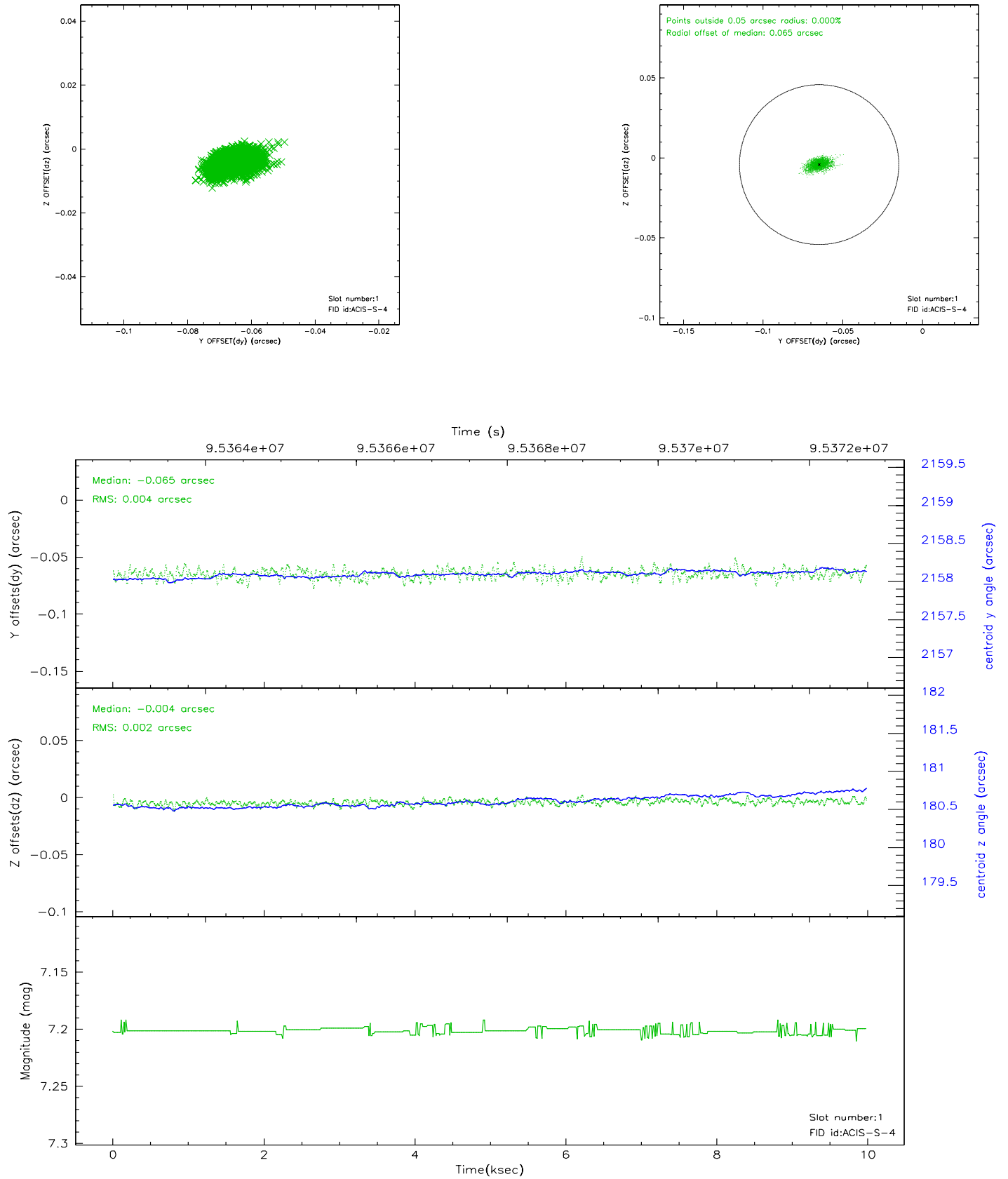


2.5 FID Slots

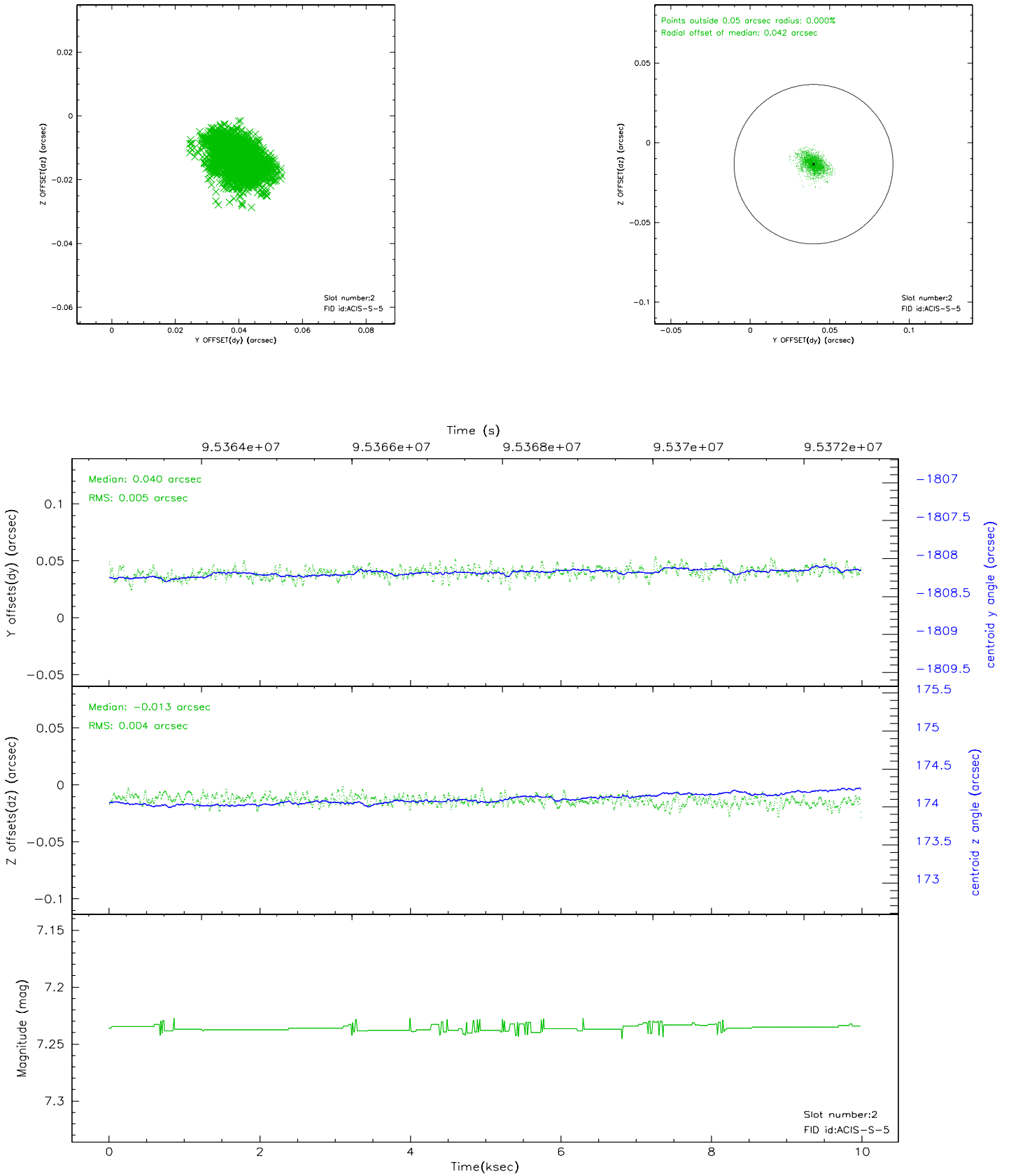
2.5.1 Slot 0



2.5.2 Slot 1

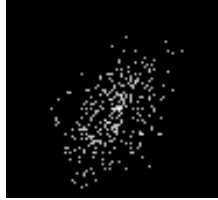


2.5.3 Slot 2



3 Point Sources

6.08 arcmin



A Summary

A.1 Status

V&V Scientist	Jen Lauer
V&V Date (YYYY-MM-DD)	2006.11.02
V&V Edition	1
V&V Disposition and Status	OK
V&V Charge Time	9.984

A.2 Comments

Roll constraint met. Jet clearly visible.