

# V&V Reference Report

## L2 ASCDS Version : 7.6.10

Observation 2130 - L2 Version 001  
Chandra X-Ray Center

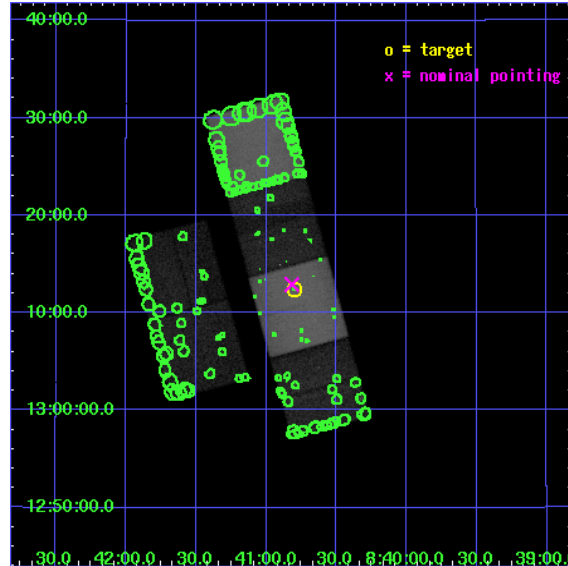
L2 Processing Date : Jun 14 2007

## Contents

<b>1</b>	<b>Front</b>	<b>2</b>
<b>2</b>	<b>OBI</b>	<b>3</b>
2.1	OBI . . . . .	3
2.1.1	Images . . . . .	3
2.1.2	Bias . . . . .	3
2.1.3	Parameters . . . . .	4
2.1.4	Events . . . . .	4
2.2	Compared Parameters . . . . .	5
2.3	Aspect . . . . .	6
2.4	Star Slots . . . . .	9
2.4.1	Slot 3 . . . . .	9
2.4.2	Slot 4 . . . . .	10
2.4.3	Slot 5 . . . . .	11
2.4.4	Slot 6 . . . . .	12
2.4.5	Slot 7 . . . . .	13
2.5	FID Slots . . . . .	14
2.5.1	Slot 0 . . . . .	14
2.5.2	Slot 1 . . . . .	15
2.5.3	Slot 2 . . . . .	16
<b>3</b>	<b>Point Sources</b>	<b>17</b>
<b>A</b>	<b>Summary</b>	<b>18</b>
A.1	Status . . . . .	18
A.2	Comments . . . . .	18

# 1 Front

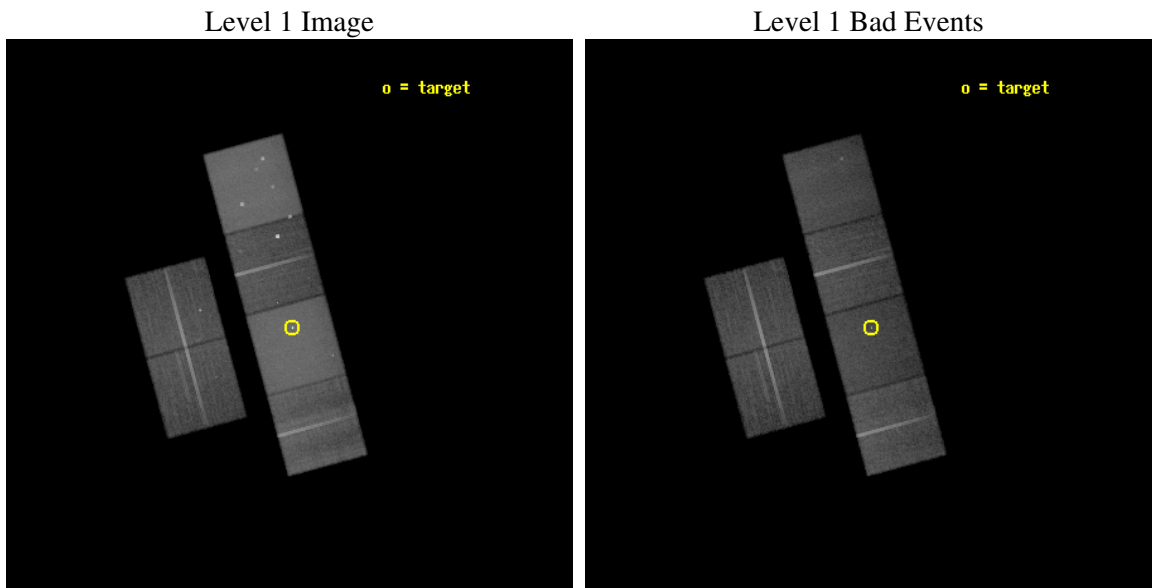
seq_num	700320
obs_id	2130
title	INVERSE COMPTON SCATTERING IN QUASAR RADIO LOBES AND THE SPECTRUM OF RELATIVISTIC ELECTRONS
observer	Dr. Gianfranco Brunetti
object	3C 207
dtcycle	0
cycle	P
ra_targ	130.2
dec_targ	13.206389
ra_nom	130.20435747593
dec_nom	13.21529052902
roll_nom	74.908017944003
revision	2
ontime	38022.400035411
livetime	37540.937511822
ontime2	38022.400035411
ontime3	38022.400035411
ontime5	38022.400035411
ontime6	38022.400035411
ontime7	38022.400035411
ontime8	38022.400035411
l2events	676279



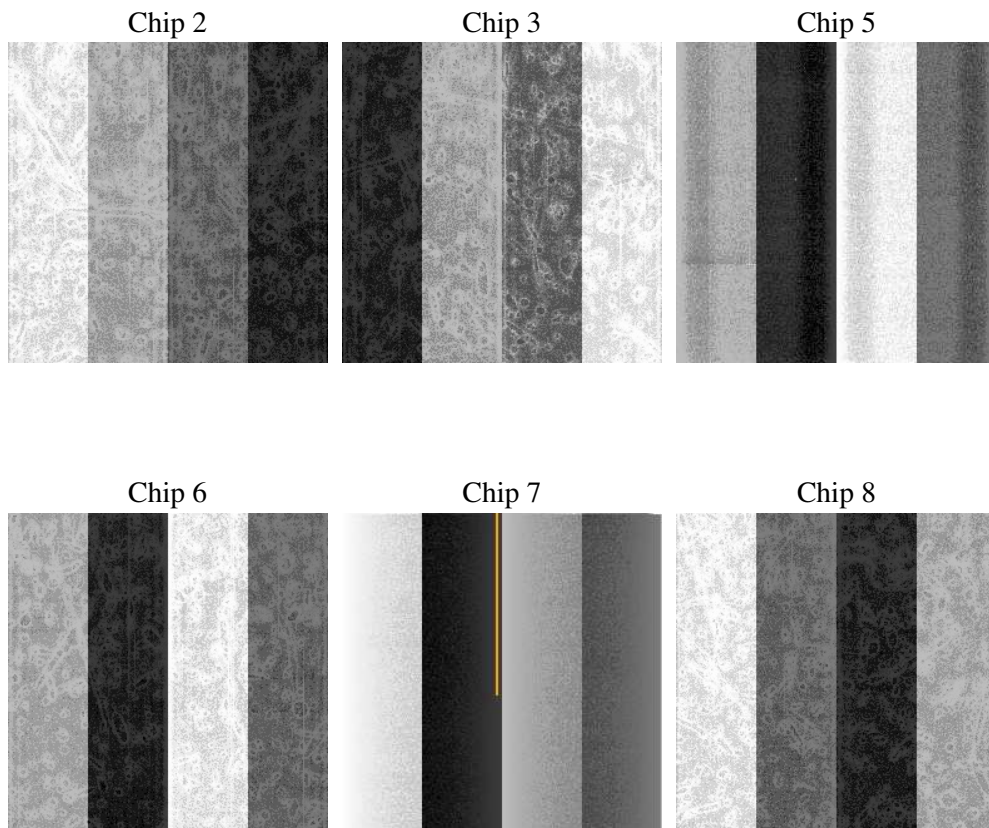
## 2 OBI

### 2.1 OBI

#### 2.1.1 Images



#### 2.1.2 Bias



### 2.1.3 Parameters

obi_num	0
ascdsver	7.6.10
caldsver	3.4.0
date	2007-06-14T12:32:58
revision	2

sched_exp_time	38000.000000
ontime	38022.400035411
ontime2	38022.400035411
ontime3	38022.400035411
ontime5	38022.400035411
ontime6	38022.400035411
ontime7	38022.400035411
ontime8	38022.400035411
l1events	1981545

### 2.1.4 Events

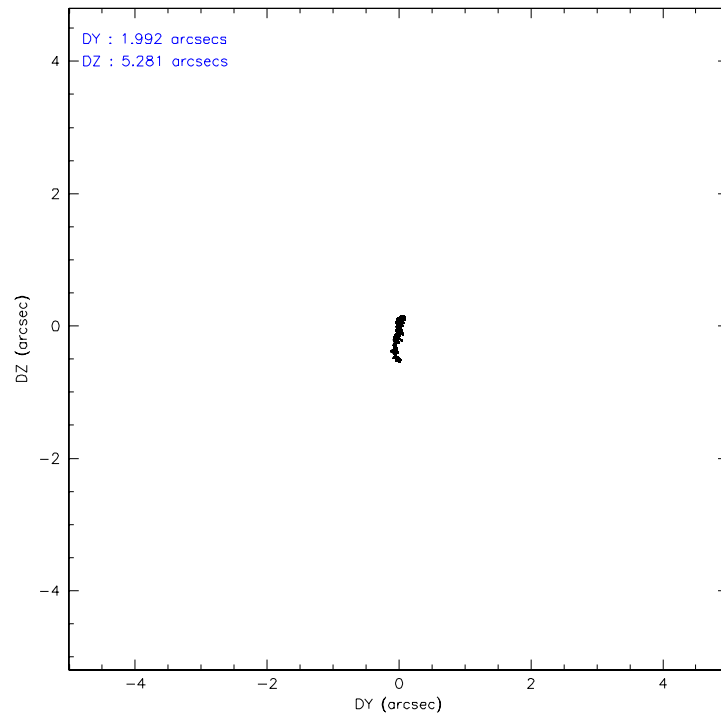
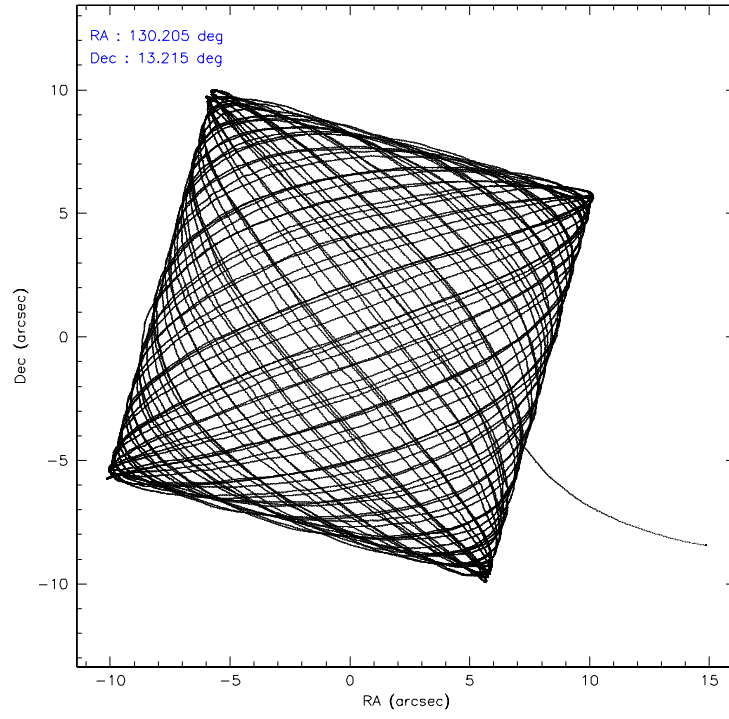
	ccd 2	ccd 3	ccd 5	ccd 6	ccd 7	ccd 8
level 1 events	251465	237870	457005	265309	441563	328333
rejected events	213504	201299	182500	208591	171087	233304
rejected %	84%	84%	39%	78%	38%	71%

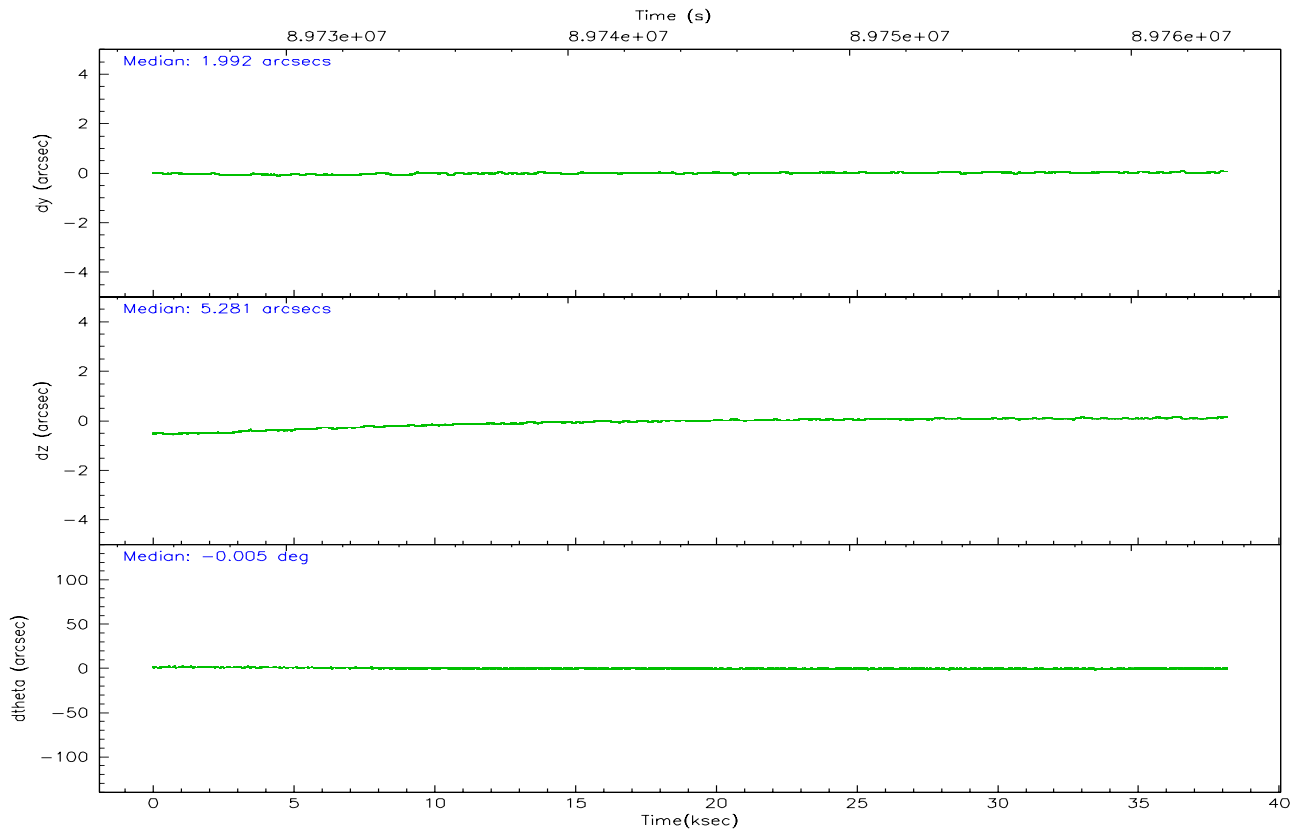
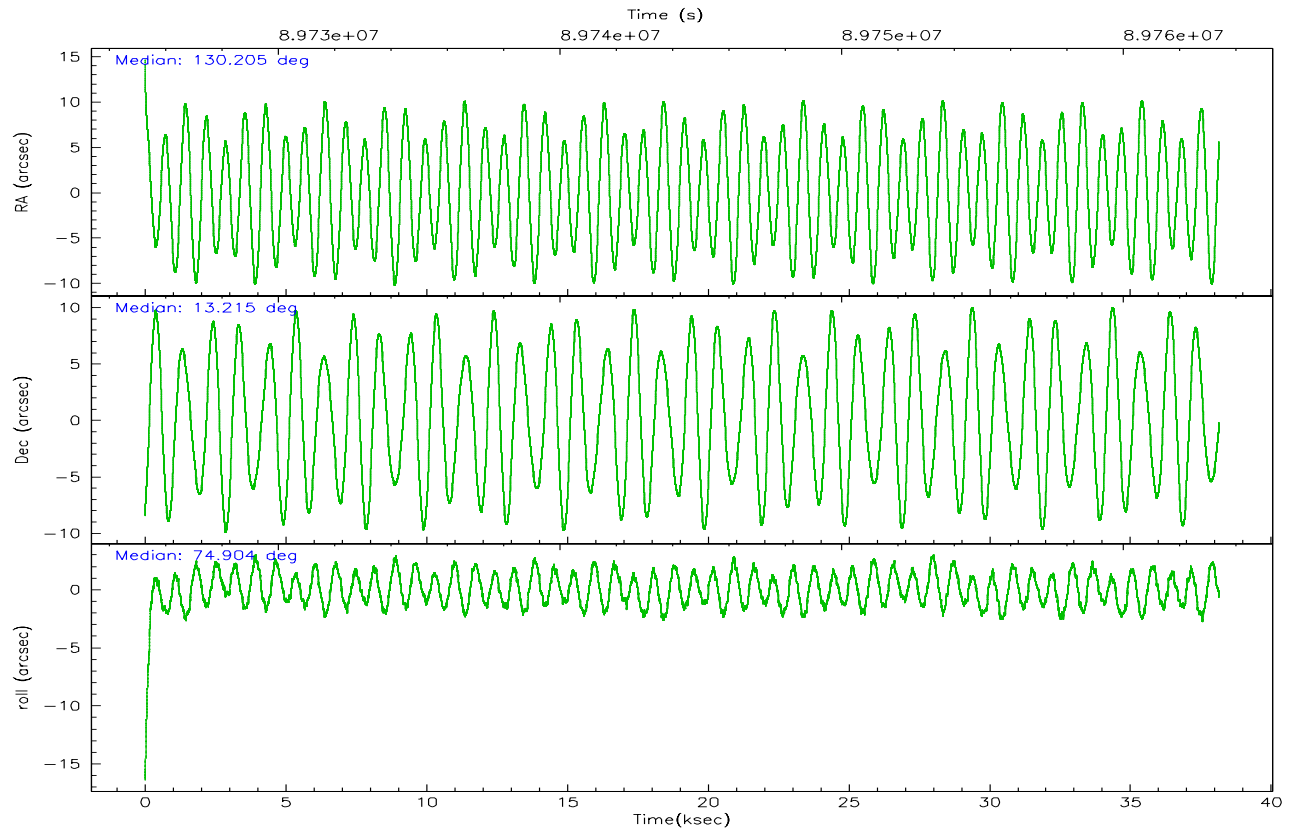
	ccd 2	ccd 3	ccd 5	ccd 6	ccd 7	ccd 8
grade 0 events	18895	17390	43560	35618	30953	38640
	7%	7%	9%	13%	7%	11%
grade 1 events	143	132	744	241	417	268
	0%	0%	0%	0%	0%	0%
grade 2 events	8150	8176	75283	9156	50418	17600
	3%	3%	16%	3%	11%	5%
grade 3 events	2508	2537	15439	2854	22755	10930
	0%	1%	3%	1%	5%	3%
grade 4 events	2636	2665	15136	2855	22792	10150
	1%	1%	3%	1%	5%	3%
grade 5 events	7733	8230	25888	9361	28591	11893
	3%	3%	5%	3%	6%	3%
grade 6 events	5780	5812	125221	6255	143743	17736
	2%	2%	27%	2%	32%	5%
grade 7 events	205620	192928	155734	198969	141894	221116
	81%	81%	34%	74%	32%	67%

## 2.2 Compared Parameters

Parameter	Planned	Actual	Parameter	Planned	Actual
Instrument	ACIS	ACIS	Obspar format version number	6	6
Detector	ACIS-235678	ACIS-235678	Obspar file type	PREDICTED	ACTUAL
Grating	NONE	NONE	Obspar update status	NONE	UPDATED
Data mode	FAINT	FAINT	Number of optional ACIS chips dropped	0	0
Observation mode	POINTING	POINTING	On-chip summing requested	N	N
Pointing RA	130.211787	130.204357475929	Subarray requested	NONE	NONE
Pointing Dec	13.188926	13.21529052902026	Alternating exposures requested	N	N
Pointing Roll	74.749696	74.90801794400311	Primary exposure time	0.000000	3.2
SIM focus pos (mm)	-0.684267	-0.6828225247311905			
SIM defocus (mm)	0	0.001444936568705701			
SIM translation stage pos (mm)	-190.132523	-190.145094680475			
SIM translation stage offset (mm)	0	0.01257209746719923			
Observation start time	89725415.184000	89724419.48658399			
Observation start date	2000-11-04T11:42:31	2000-11-04T11:26:59			
Observation end time	89763415.184000	89763957.32557701			
Observation end date	2000-11-04T22:15:51	2000-11-04T22:25:57			
Read mode	TIMED	TIMED			

## 2.3 Aspect





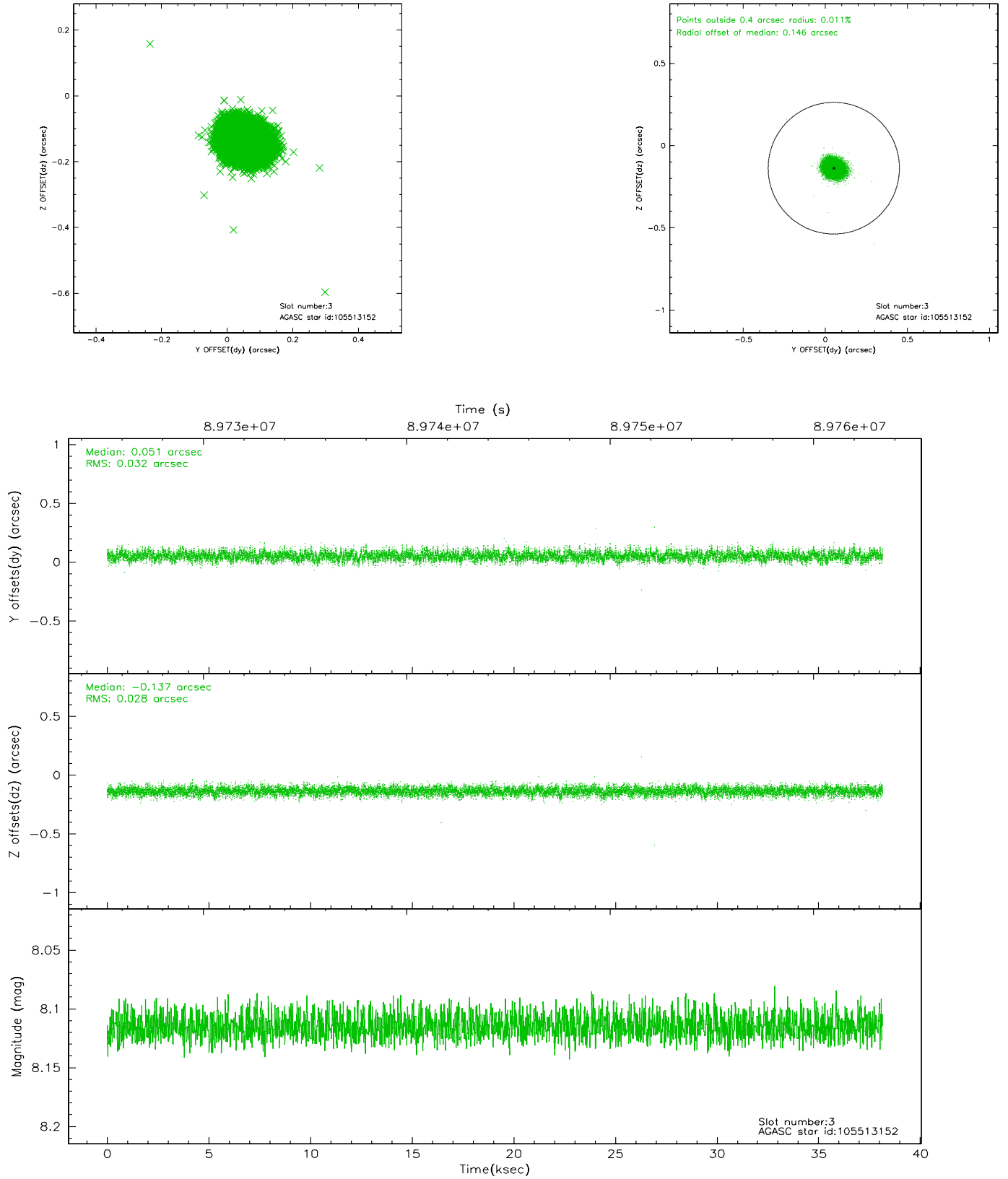
### Slot Statistics

slot	status	id	mag	n_pts	med_dy	med_dz	dr1	dr2	ra	dec	mean_y	mean_z
0	FID	ACIS-S-2	7.11	9304	-0.034	0.015	0.007	0.012	0.000000	0.000000	-754.61	-1726.22
1	FID	ACIS-S-4	7.20	9304	-0.045	0.012	0.005	0.009	0.000000	0.000000	2158.61	182.29
2	FID	ACIS-S-5	7.24	9305	0.048	-0.019	0.007	0.011	0.000000	0.000000	-1807.37	175.88
3	GUIDE	105513152	8.11	18605	0.051	-0.137	0.045	0.074	129.815846	12.960374	-1158.66	1124.39
4	GUIDE	106964768	8.42	18609	0.007	0.019	0.054	0.087	130.319307	13.200393	138.61	-352.10
5	GUIDE	106965360	8.73	18607	0.112	0.204	0.076	0.119	130.587812	12.638213	-1564.54	-1795.09
6	GUIDE	106962968	8.87	18608	0.038	0.099	0.067	0.107	130.463087	13.055809	-230.47	-975.71
7	GUIDE	106043672	9.03	18596	-0.208	-0.181	0.065	0.105	129.948191	13.729914	1636.29	1402.21

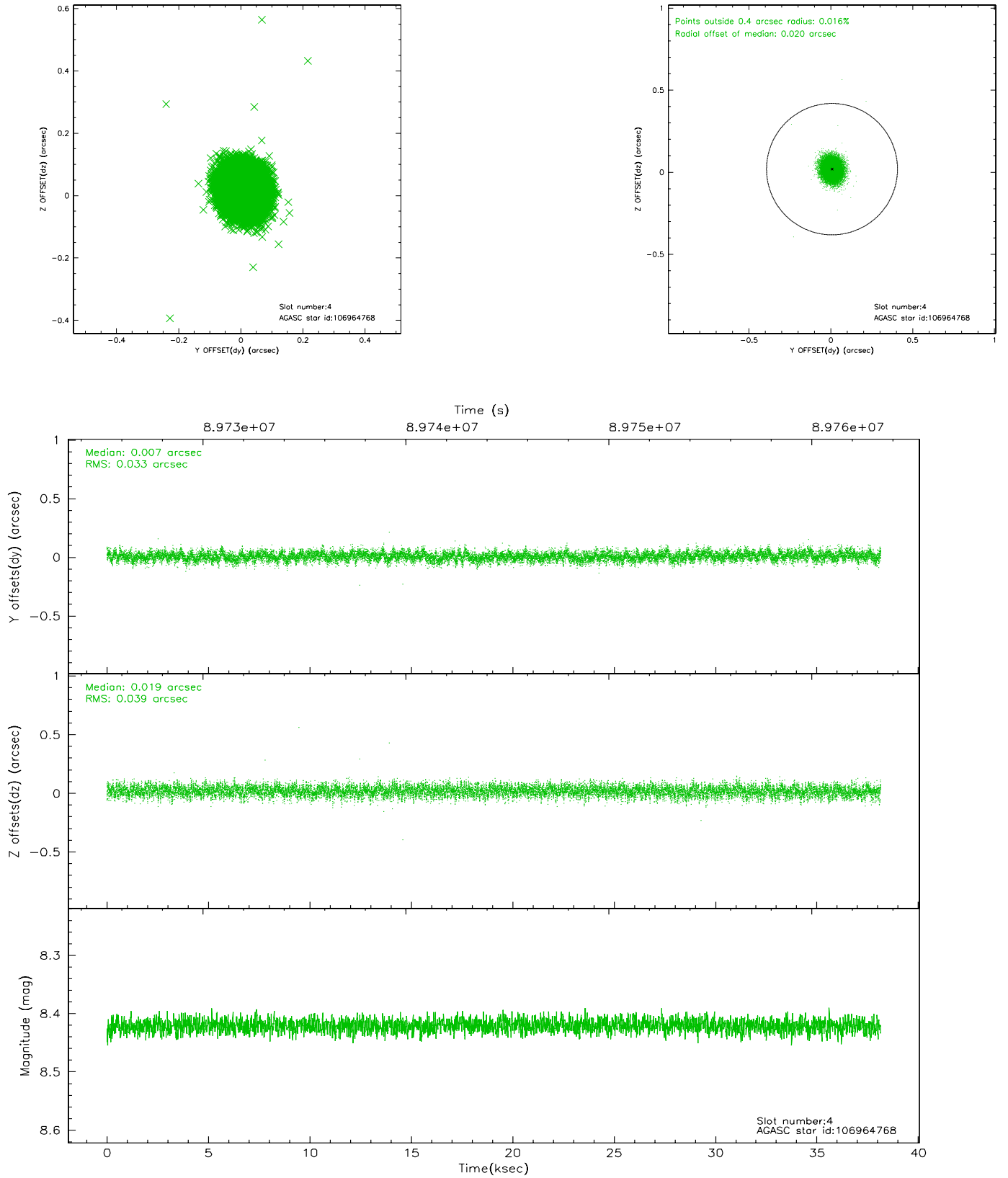


## 2.4 Star Slots

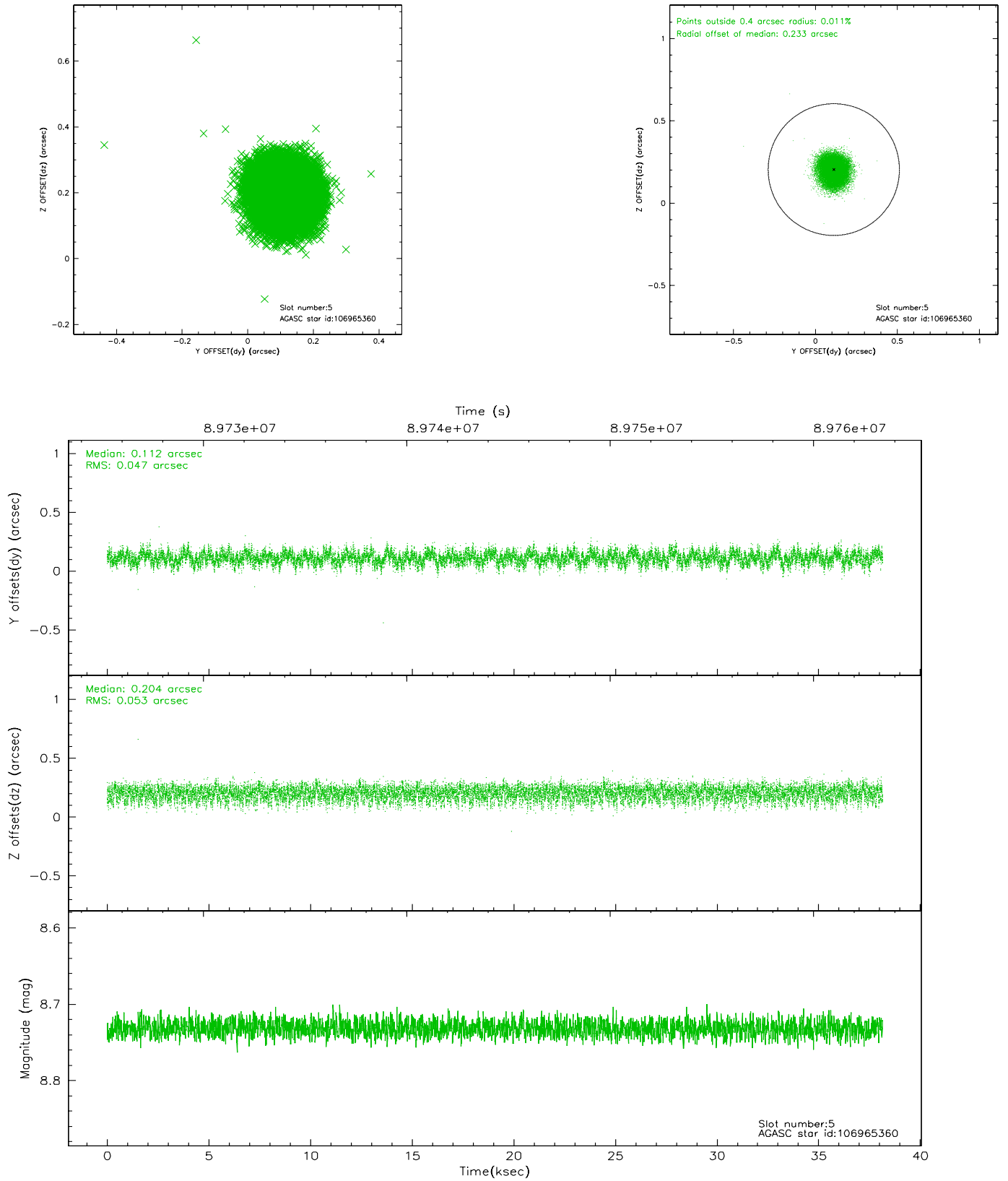
### 2.4.1 Slot 3



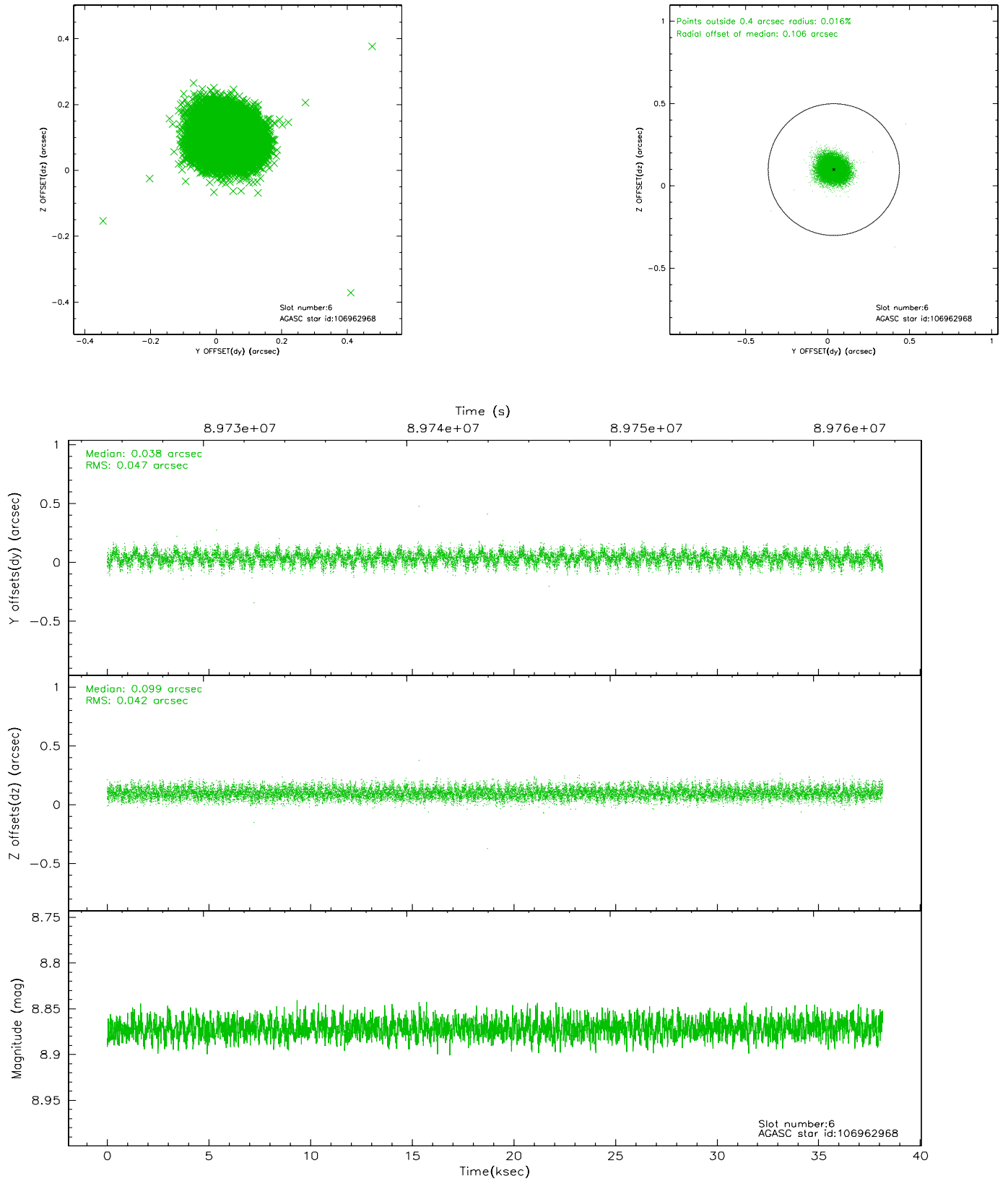
## 2.4.2 Slot 4



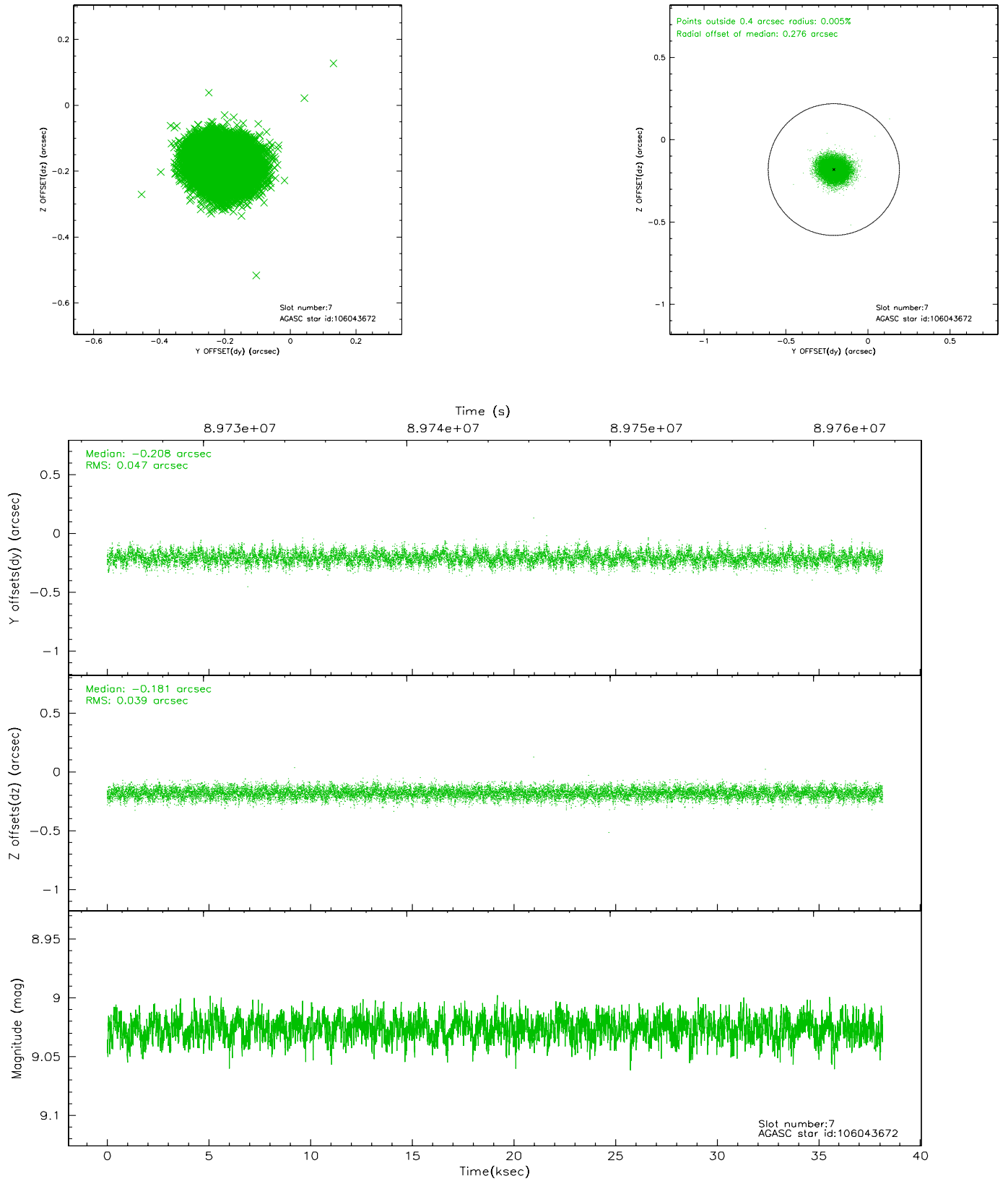
### 2.4.3 Slot 5



## 2.4.4 Slot 6

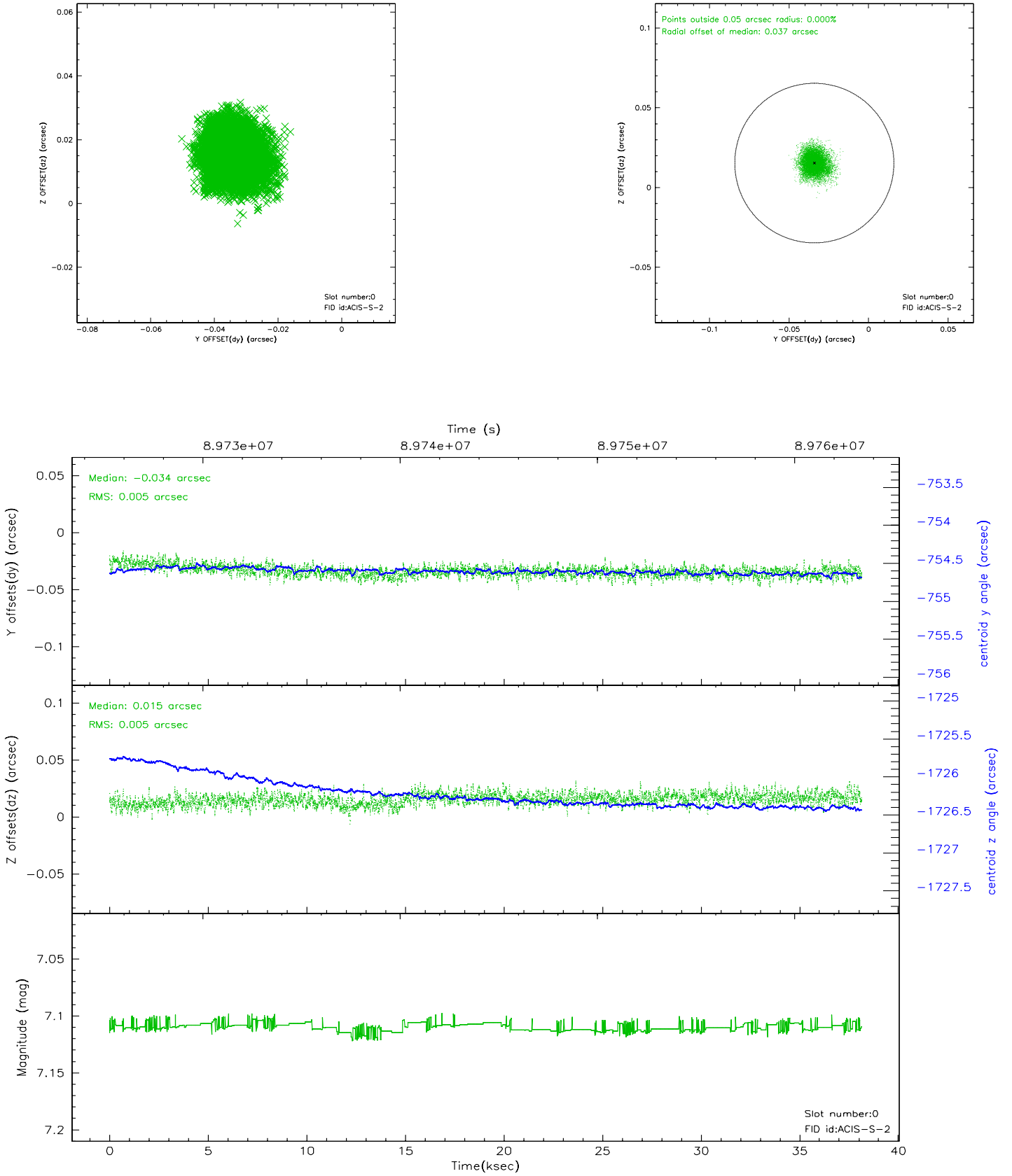


## 2.4.5 Slot 7

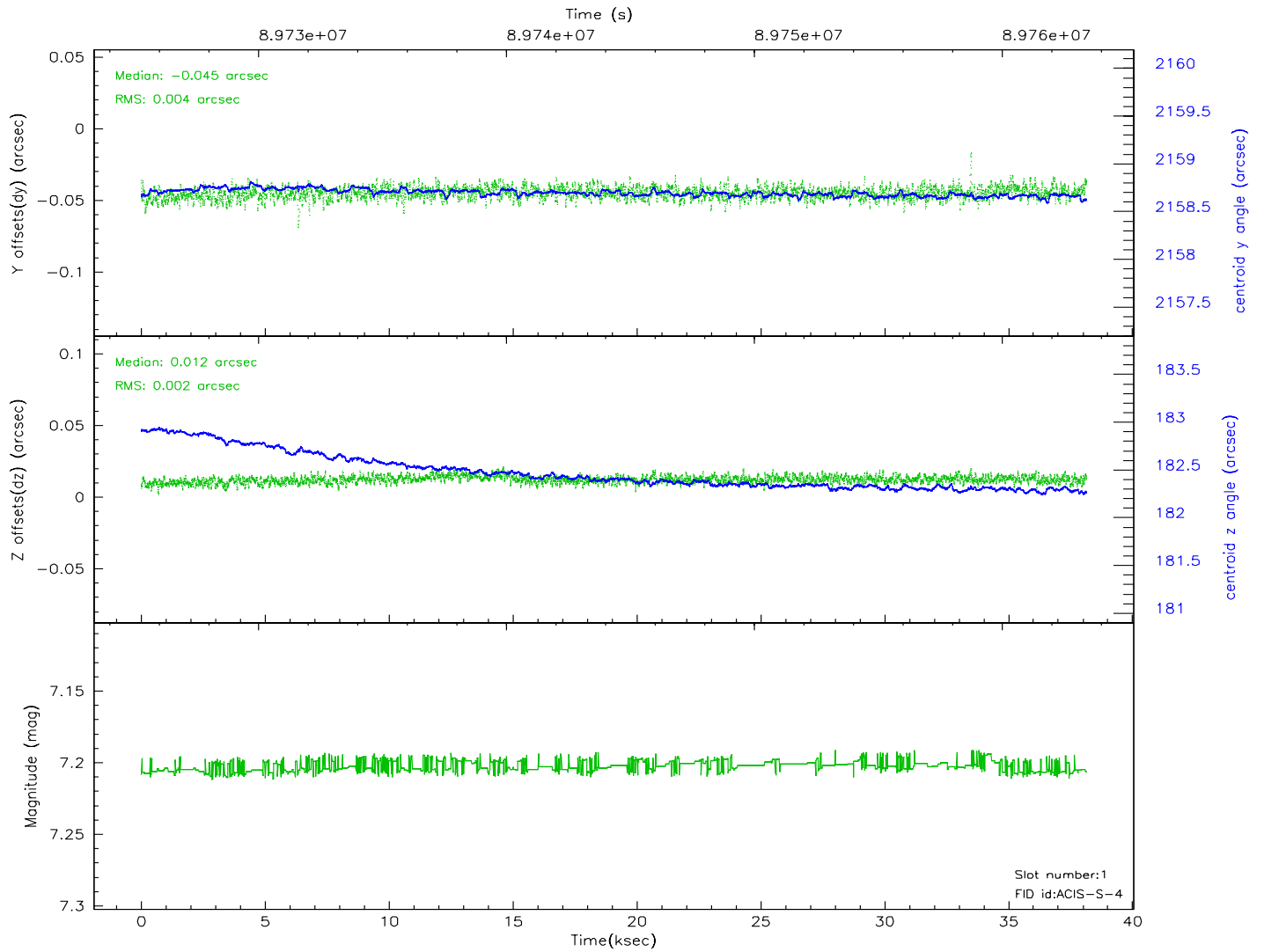
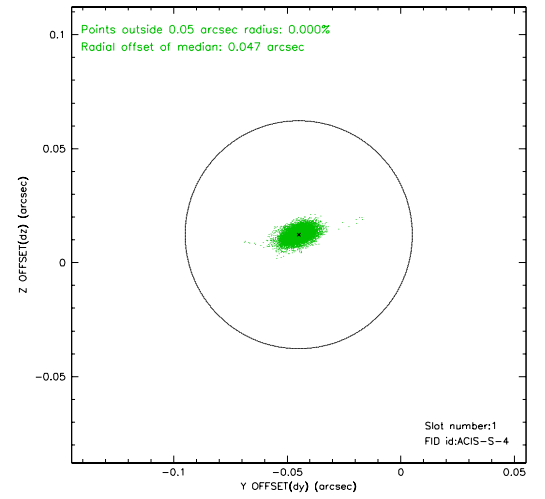
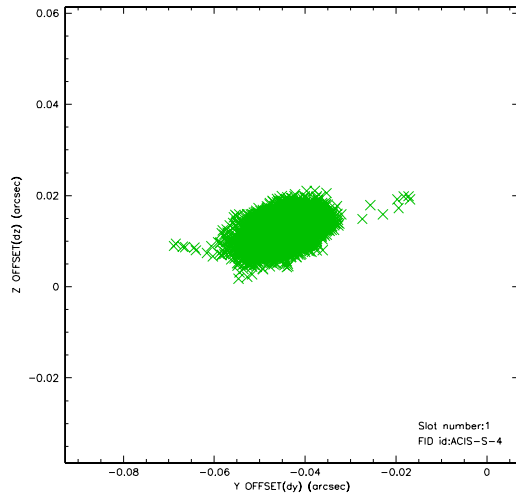


## 2.5 FID Slots

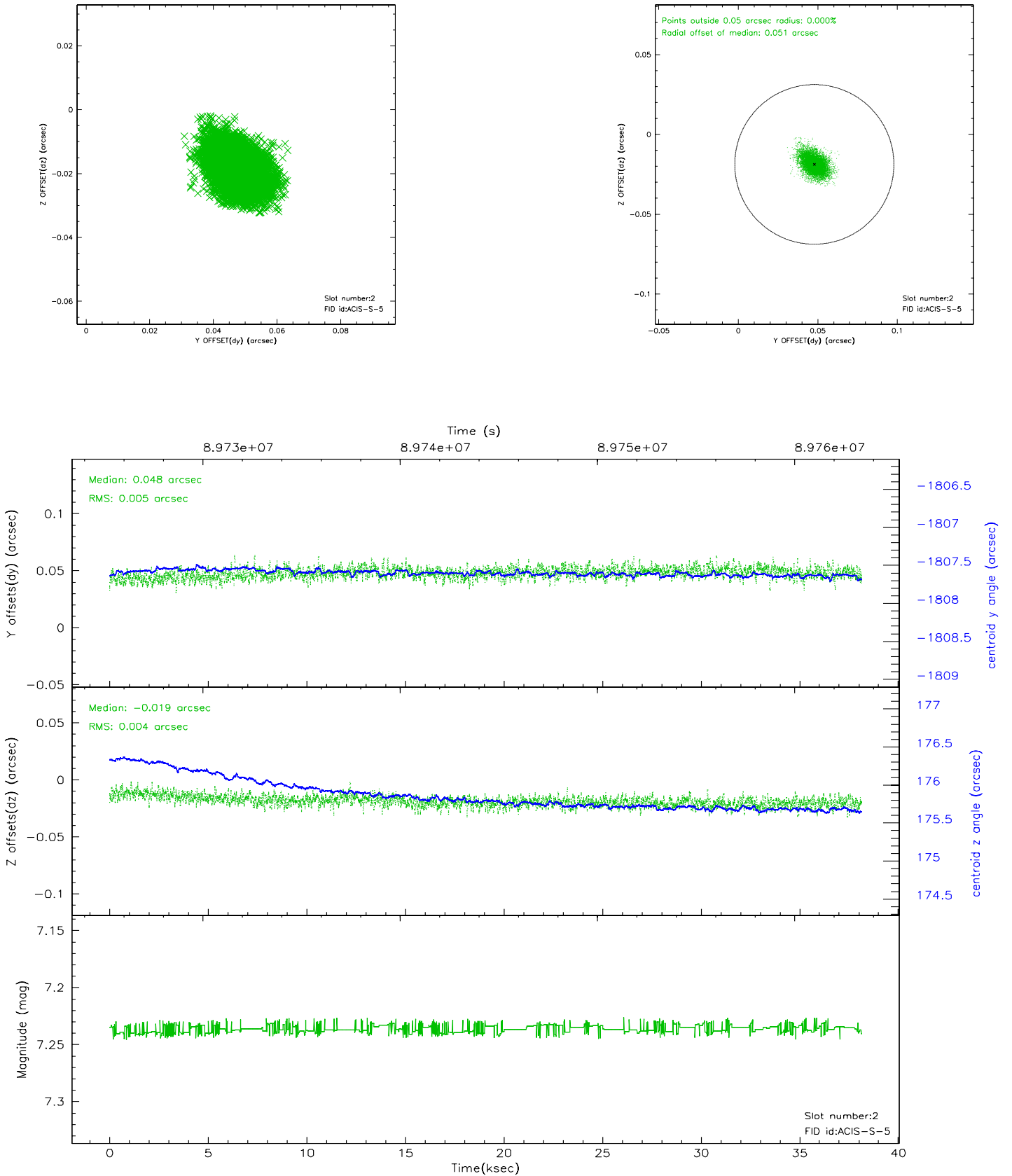
### 2.5.1 Slot 0



## 2.5.2 Slot 1

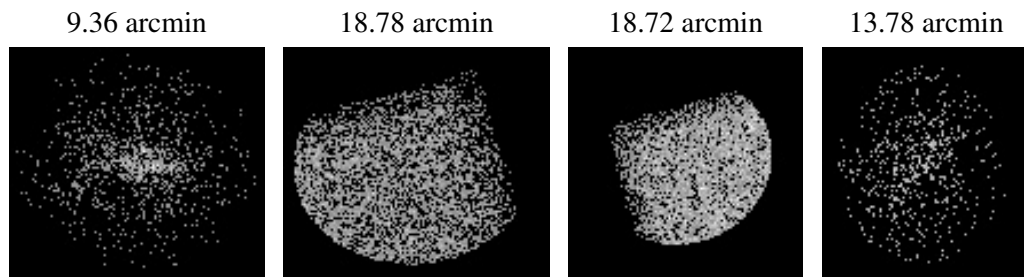


### 2.5.3 Slot 2





### 3 Point Sources



## A Summary

### A.1 Status

V&V Scientist	Jen Lauer
V&V Date (YYYY-MM-DD)	2007.06.14
V&V Edition	1
V&V Disposition and Status	OK
V&V Charge Time	38.025

### A.2 Comments