

# V&V Reference Report

## L2 ASCDS Version : 8.5.1.1

Observation 15030 - L2 Version 2  
Chandra X-Ray Center

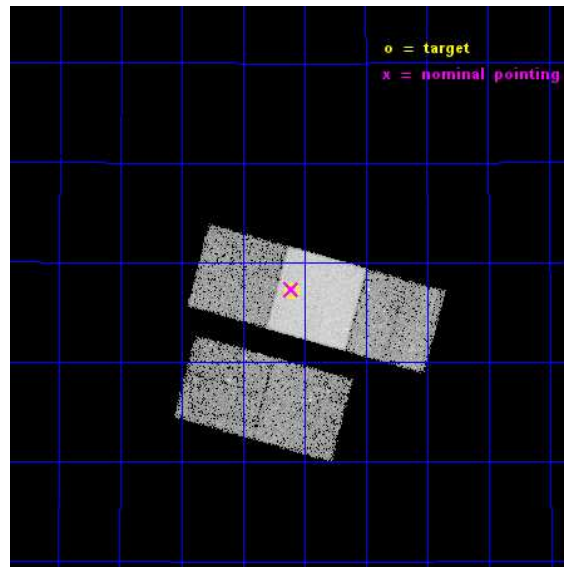
L2 Processing Date : Nov 30 2014

## Contents

<b>1</b>	<b>Front</b>	<b>2</b>
<b>2</b>	<b>OBI</b>	<b>3</b>
2.1	OBI . . . . .	3
2.1.1	Images . . . . .	3
2.1.2	Bias . . . . .	3
2.1.3	Parameters . . . . .	4
2.1.4	Events . . . . .	4
2.2	Compared Parameters . . . . .	5
2.3	Aspect . . . . .	6
2.4	Star Slots . . . . .	9
2.4.1	Slot 3 . . . . .	9
2.4.2	Slot 4 . . . . .	10
2.4.3	Slot 5 . . . . .	11
2.4.4	Slot 6 . . . . .	12
2.4.5	Slot 7 . . . . .	13
2.5	FID Slots . . . . .	14
2.5.1	Slot 0 . . . . .	14
2.5.2	Slot 1 . . . . .	15
2.5.3	Slot 2 . . . . .	16
<b>A</b>	<b>Summary</b>	<b>17</b>
A.1	Status . . . . .	17
A.2	Comments . . . . .	17

# 1 Front

seq_num	702837	Sequence number
obs_id	15030	Observation id
title	Are Double-Peaked Optical Emission Lines Reliable Indicators of Dual AGNs?	Proposal title
observer	Dr. Claire Max	Principal investigator
object	SDSS J165206.14+310707.6	Source name
dtcycle	0	&#160
cycle	P	events from which exps? Prim/Second/Both
ra_targ	253.025417	Observer's specified target RA [deg]
dec_targ	31.118889	Observer's specified target Dec [deg]
ra_nom	253.02643678729	Nominal RA [deg]
dec_nom	31.1217895804	Nominal Dec [deg]
roll_nom	15.247440415467	Nominal Roll [deg]
revision	2	Processing version of data
ontime	19206.379401803	Sum of GTIs [s]
livetime	18955.433915388	Livetime [s]
ontime2	19206.21524179	Sum of GTIs [s]
ontime3	19206.297321796	Sum of GTIs [s]
ontime6	19203.197371483	Sum of GTIs [s]
ontime7	19206.379401803	Sum of GTIs [s]
ontime8	19206.256281793	Sum of GTIs [s]
l2events	102284	Number of level 2 events

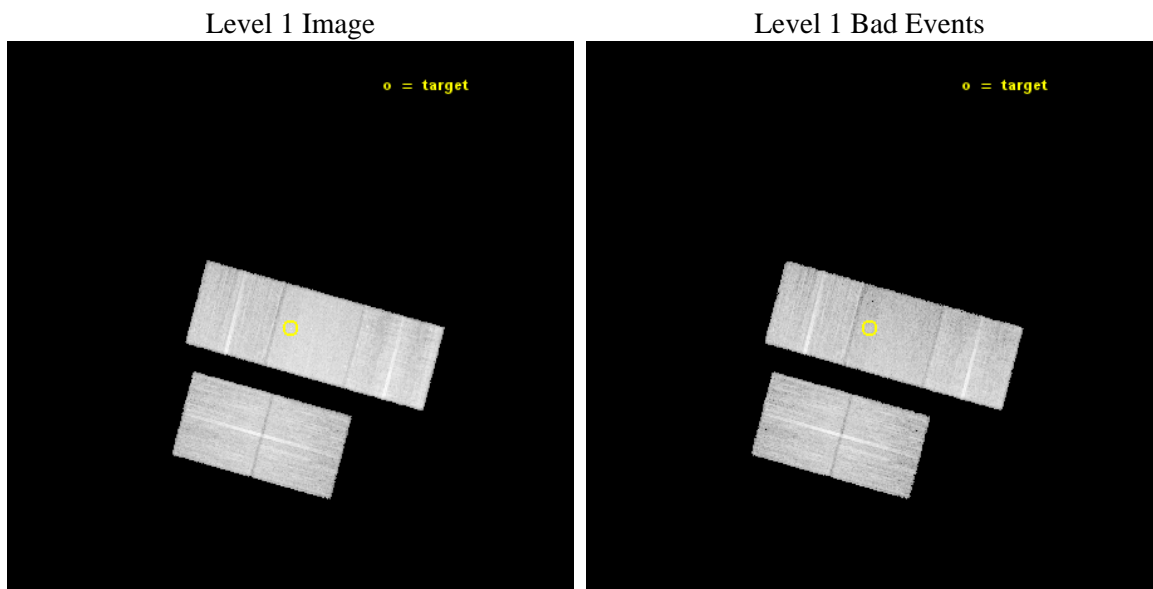




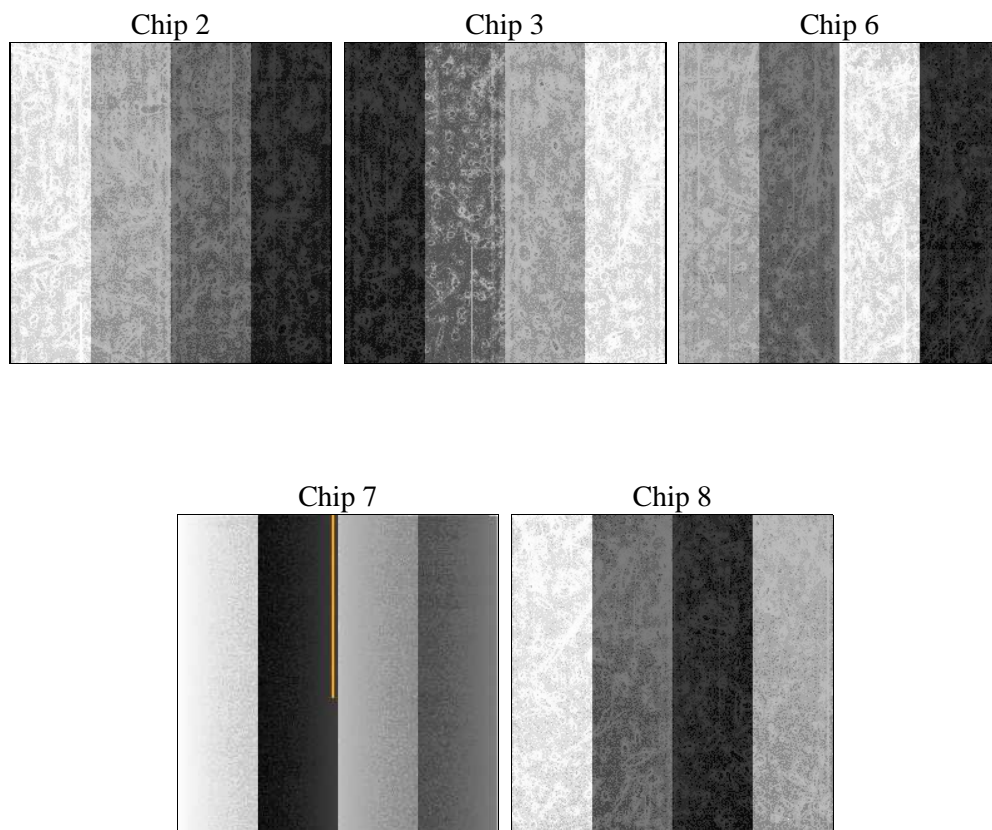
## 2 OBI

### 2.1 OBI

#### 2.1.1 Images



#### 2.1.2 Bias



### 2.1.3 Parameters

obi_num	0	Obi number	sched_exp_time	19138.277000	[s] Scheduled observation exposure time
ascdsver	10.3	Processing system revision	ontime	19206.379401803	Sum of GTIs [s]
caldsver	4.6.4	&#160	ontime2	19206.21524179	Sum of GTIs [s]
date	2014-11-30T07:35:43	Date and time of file creation	ontime3	19206.297321796	Sum of GTIs [s]
revision	2	Processing version of data	ontime6	19203.197371483	Sum of GTIs [s]
			ontime7	19206.379401803	Sum of GTIs [s]
			ontime8	19206.256281793	Sum of GTIs [s]
			l1events	582847	Number of level 1 events

### 2.1.4 Events

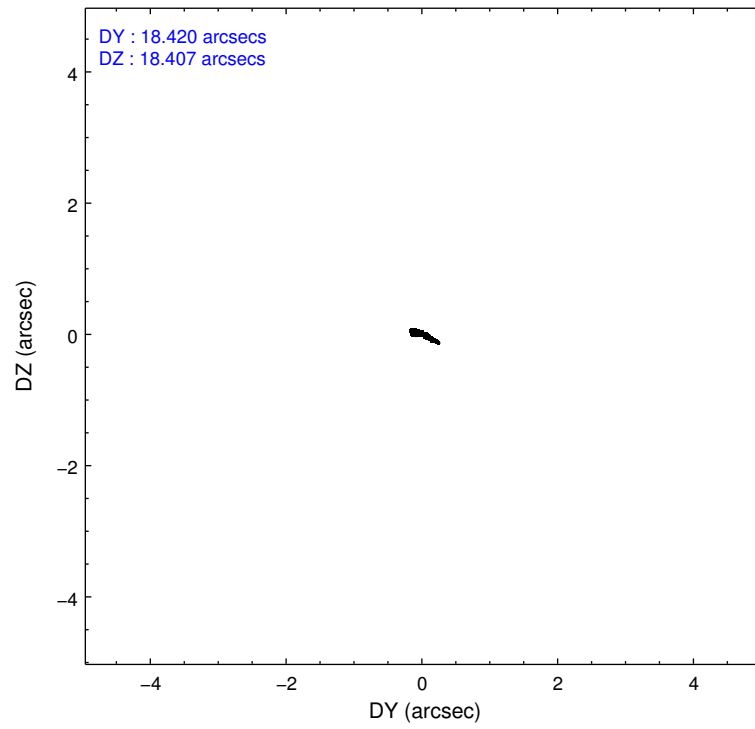
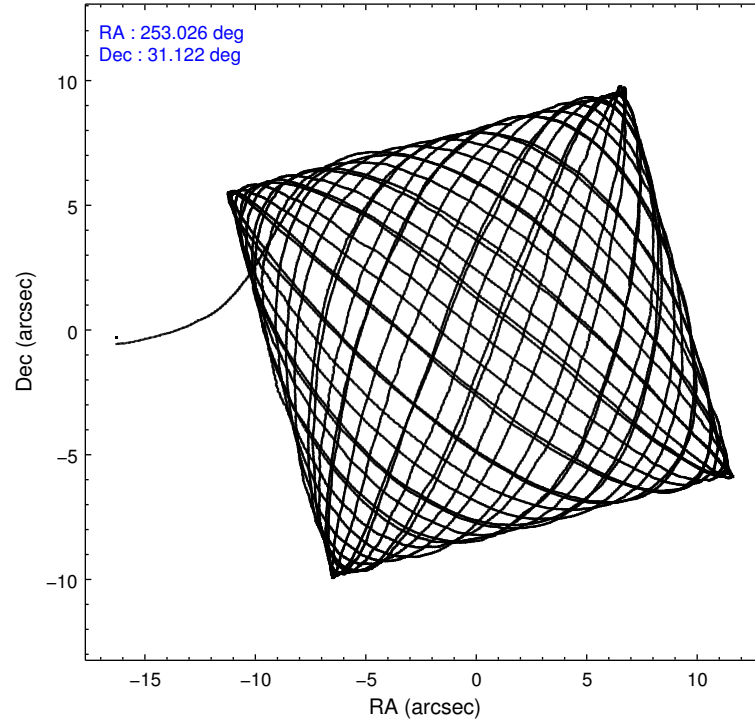
	ccd 2	ccd 3	ccd 6	ccd 7	ccd 8
level 1 events	102335	97990	105414	137645	139463
rejected events	90722	86322	93041	77655	101338
rejected %	88%	88%	88%	56%	72%

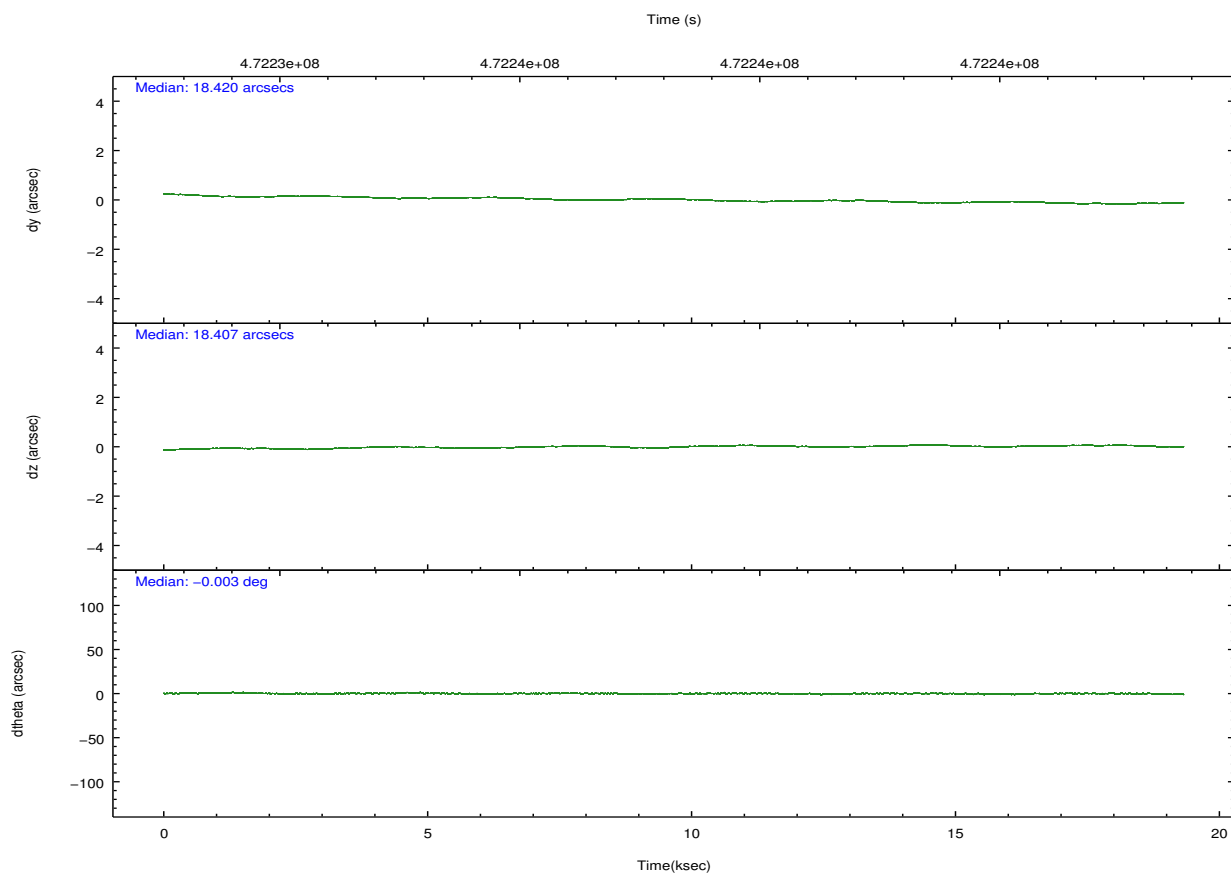
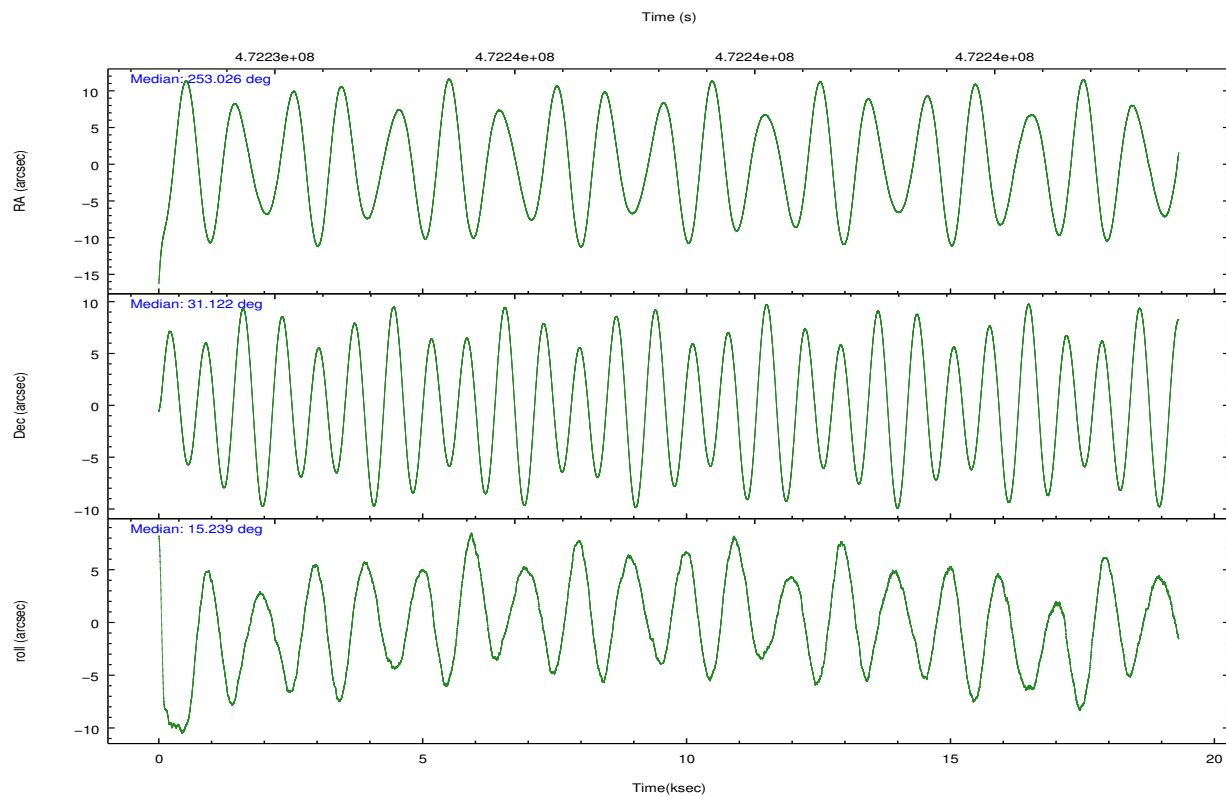
	ccd 2	ccd 3	ccd 6	ccd 7	ccd 8
grade 0 events	4197	4108	4186	5366	11270
	4%	4%	3%	3%	8%
grade 1 events	46	56	48	158	119
	0%	0%	0%	0%	0%
grade 2 events	2883	2647	2865	12284	9028
	2%	2%	2%	8%	6%
grade 3 events	1155	1286	1228	5106	3870
	1%	1%	1%	3%	2%
grade 4 events	1229	1247	1257	5178	3538
	1%	1%	1%	3%	2%
grade 5 events	4386	5176	5284	14187	7633
	4%	5%	5%	10%	5%
grade 6 events	2150	2382	2840	32061	10423
	2%	2%	2%	23%	7%
grade 7 events	86289	81088	87706	63305	93582
	84%	82%	83%	45%	67%

## 2.2 Compared Parameters

Parameter	Planned	Actual	Parameter	Planned	Actual
Instrument	ACIS	ACIS	Obspar format version number	7	7
Detector	ACIS-23678	ACIS-23678	Obspar file type	PREDICTED	ACTUAL
Grating	NONE	NONE	Obspar update status	NONE	UPDATED
Data mode	VFAINT	VFAINT	CCD I0 on	N	N
Observation mode	POINTING	POINTING	CCD I1 on	N	N
[deg] Pointing RA	253.004305	253.0264367872908	CCD I2 on	O2	Y
[deg] Pointing Dec	31.102096	31.1217895804001	CCD I3 on	O3	Y
[deg] Pointing Roll	15.102243	15.24744041546669	CCD S0 on	N	N
[mm] SIM focus pos	-0.684267	-0.6828225247311905	CCD S1 on	N	N
[mm] SIM defocus	0	0.001444936568705701	CCD S2 on	O4	Y
[mm] SIM translation stage pos	-190.132523	-190.1425803651734	CCD S3 on	Y	Y
[mm] SIM translation stage offset	0	0.01005778216563158	CCD S4 on	O1	Y
[s] Observation start time (MET)	472228728.184000	472227709.17892	CCD S5 on	N	N
Observation start date	2012-12-18T14:37:41	2012-12-18T14:21:49	Number of optional ACIS chips dropped	0	0
[s] Observation end time (MET)	472247866.184000	472248098.99252	On-chip summing requested	N	N
Observation end date	2012-12-18T19:56:39	2012-12-18T20:01:38	Subarray requested	NONE	NONE
Read mode	TIMED	TIMED	Alternating exposures requested	N	N
			[s] Primary exposure time	0.000000	3.1

## 2.3 Aspect



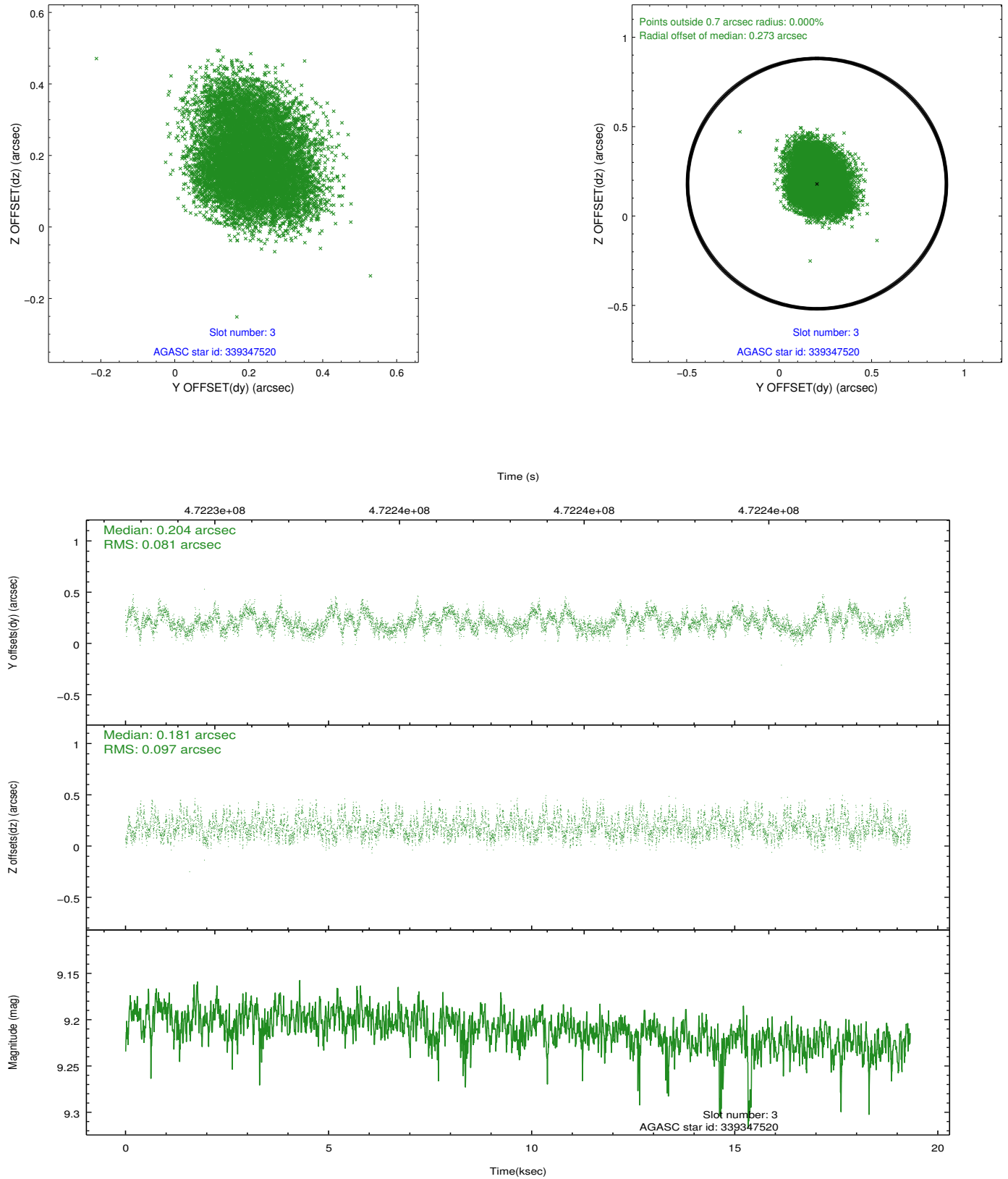


### Slot Statistics

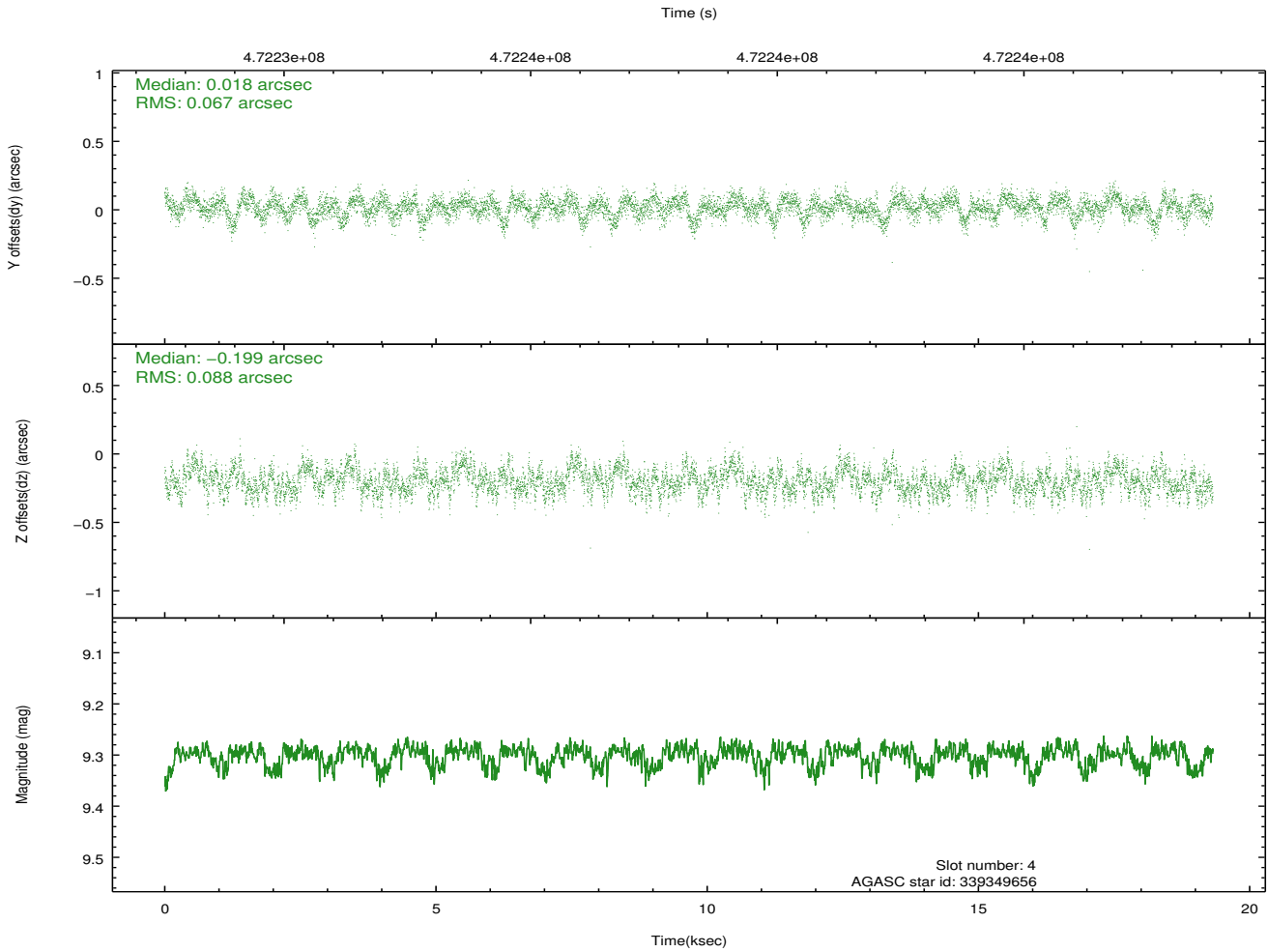
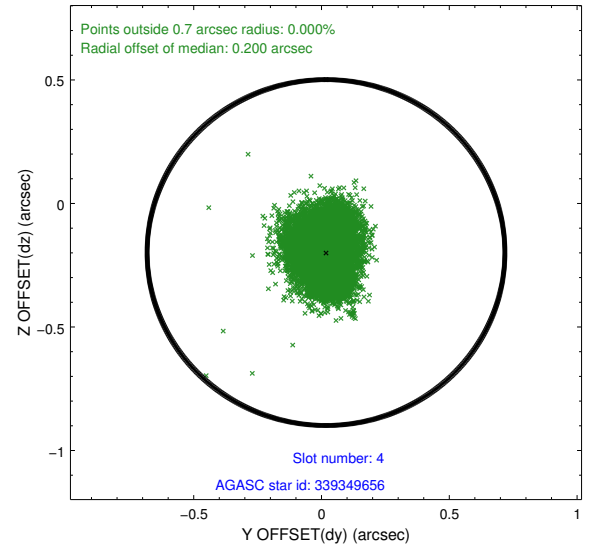
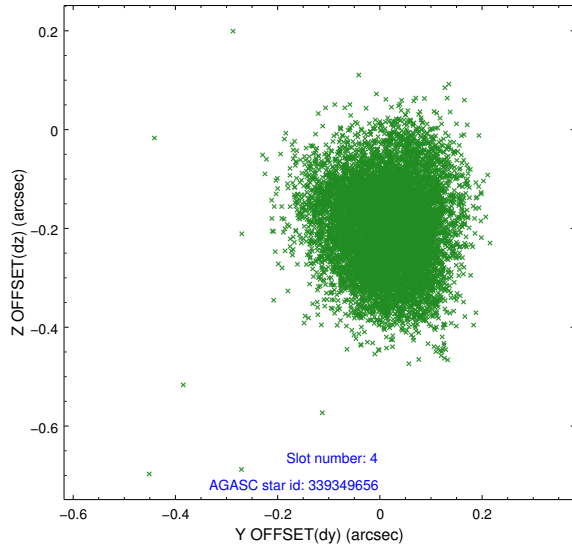
slot	status	used	id	mag	n_pts	med_dy	med_dz	dr1	dr2	ra	dec	mean_y	mean_z
0	FID		ACIS-S-2	6.95	4713	-0.088	-0.051	0.007	0.011	0.000000	0.000000	-771.61	-1739.86
1	FID		ACIS-S-4	7.03	4713	0.241	0.056	0.007	0.012	0.000000	0.000000	2141.94	168.47
2	FID		ACIS-S-5	7.07	4713	-0.184	0.004	0.007	0.012	0.000000	0.000000	-1824.26	162.39
3	GUIDE	used	339347520	9.21	9417	0.204	0.181	0.137	0.213	252.684011	30.402446	-1615.09	-2171.08
4	GUIDE	used	339349656	9.30	9415	0.018	-0.199	0.118	0.189	252.728667	31.454314	-486.66	1443.80
5	GUIDE	used	339350328	8.85	9417	-0.069	-0.250	0.113	0.168	252.229644	31.262659	-2148.54	1187.08
6	GUIDE	used	339353448	8.87	9421	0.100	0.259	0.086	0.137	252.503667	30.881625	-1698.77	-359.75
7	GUIDE	used	339354256	7.26	9424	-0.247	0.011	0.064	0.105	253.740483	30.706040	1831.03	-1962.34

## 2.4 Star Slots

### 2.4.1 Slot 3

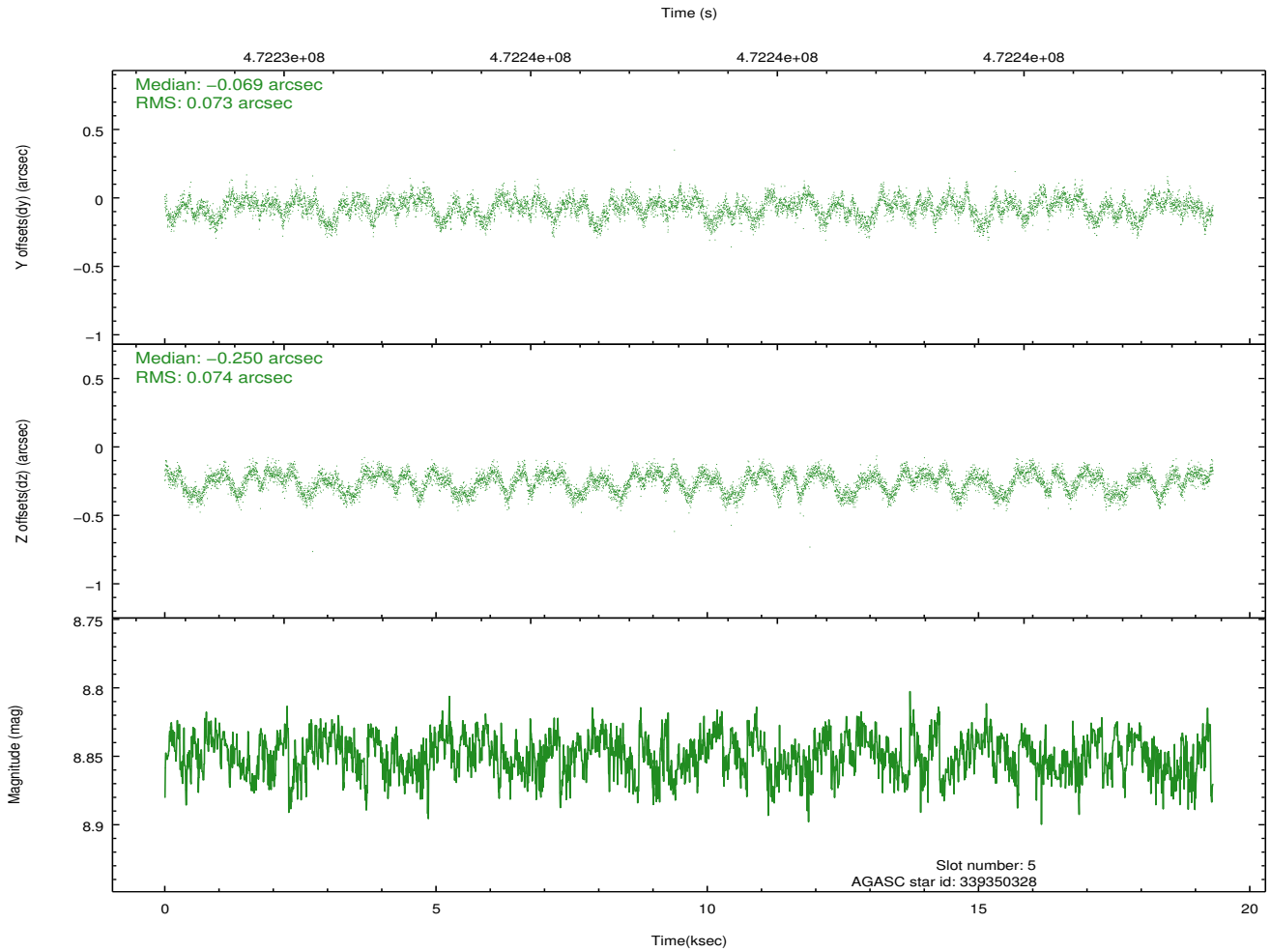
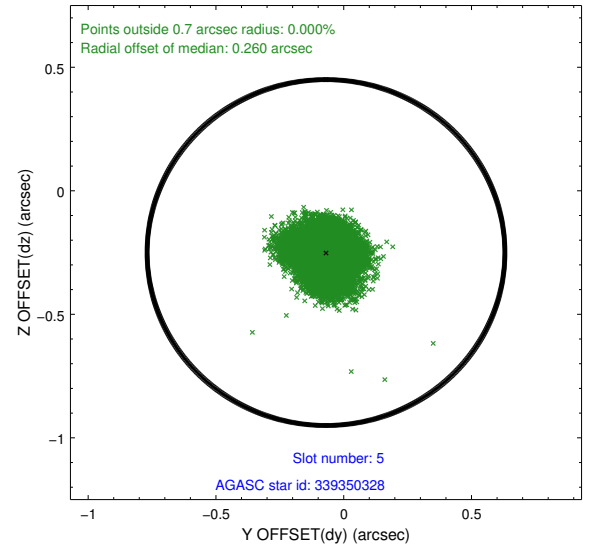
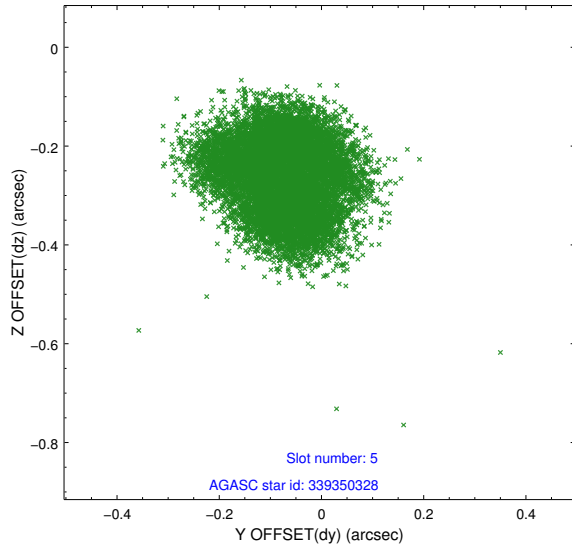


## 2.4.2 Slot 4

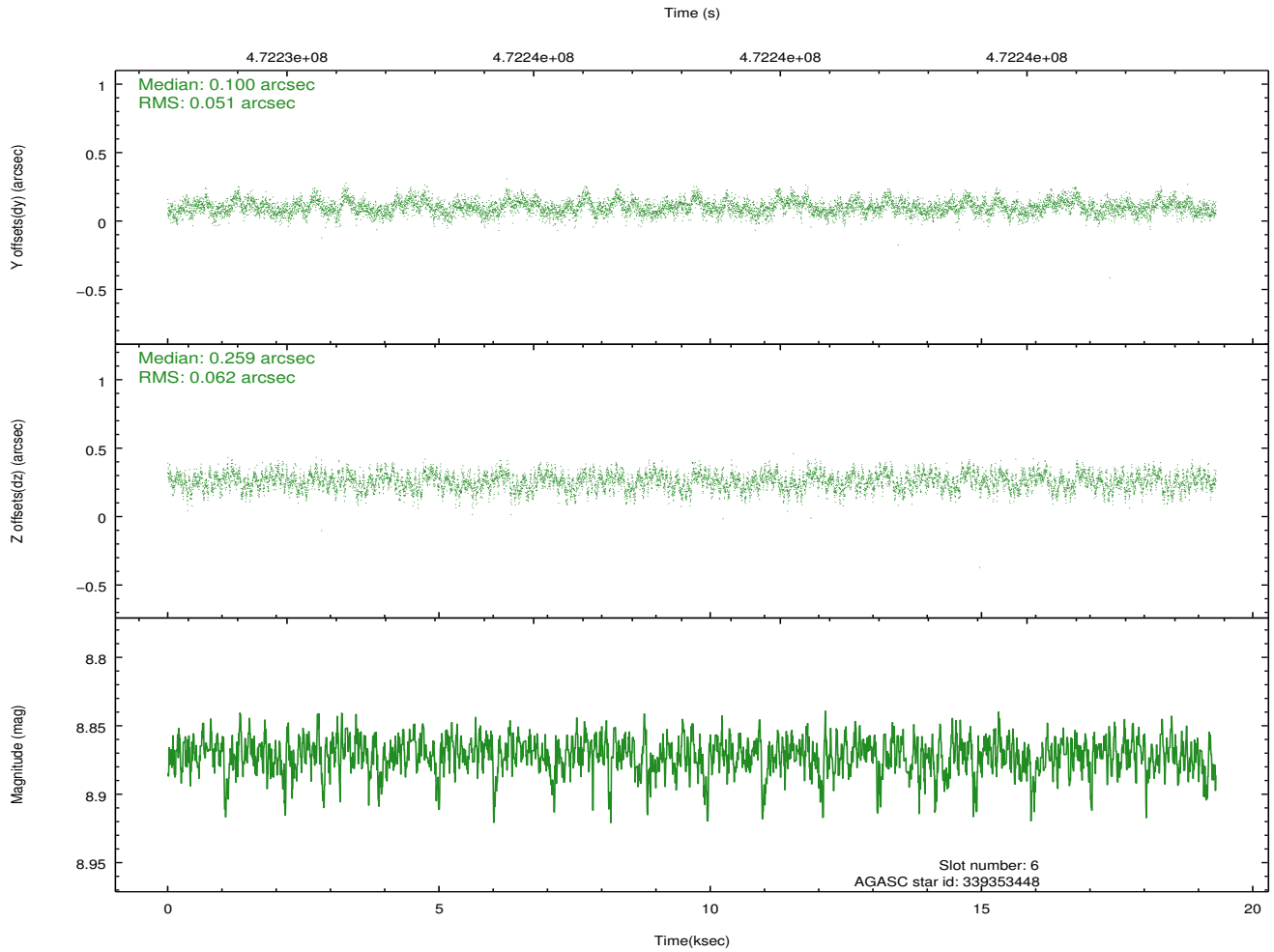
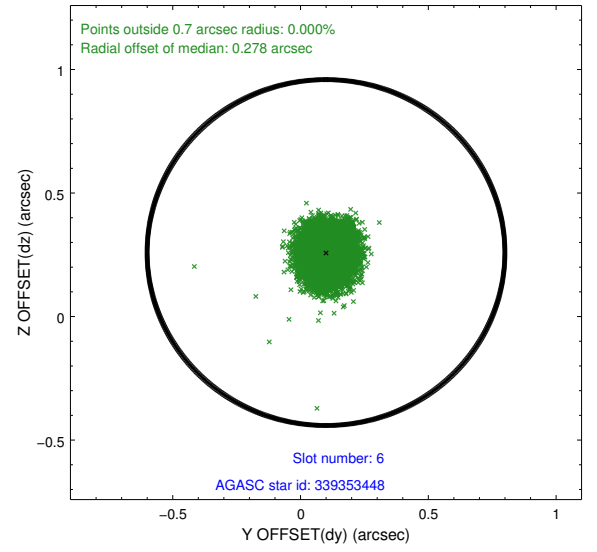
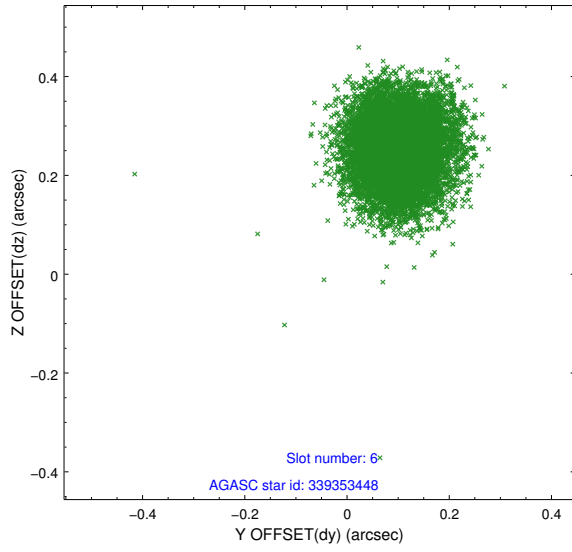




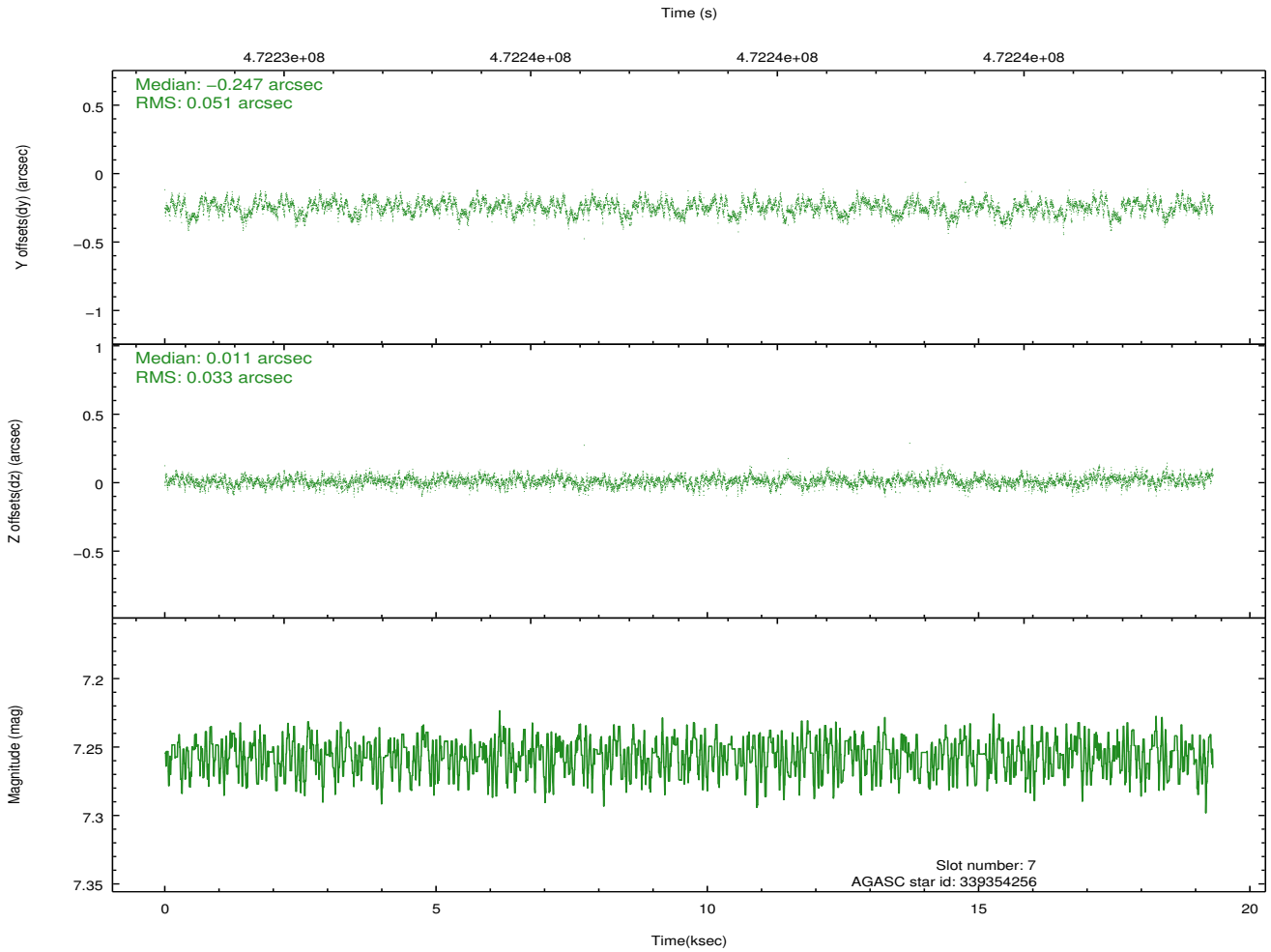
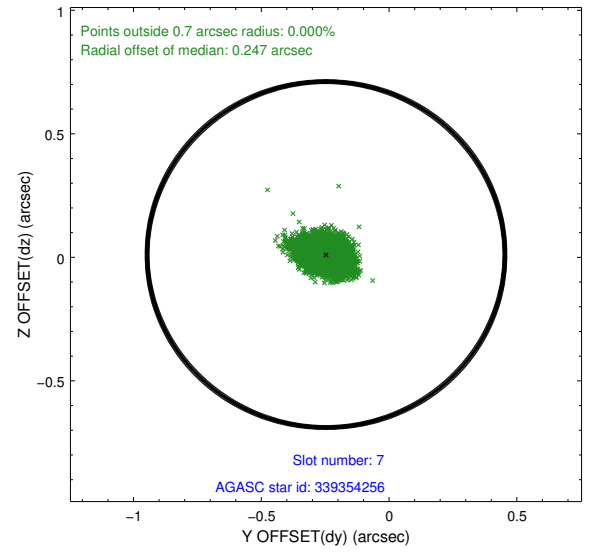
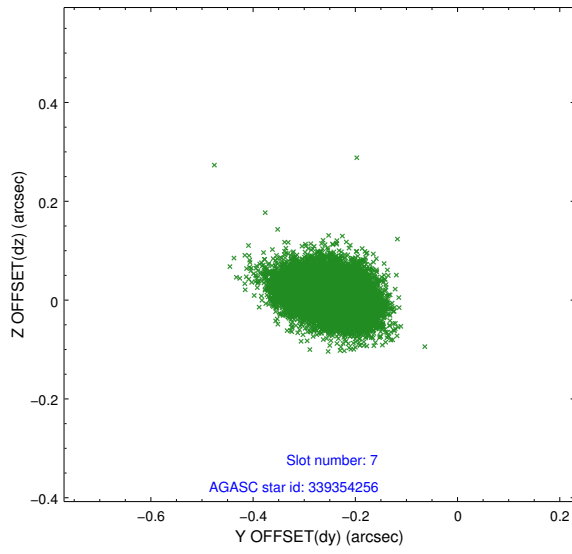
### 2.4.3 Slot 5



## 2.4.4 Slot 6

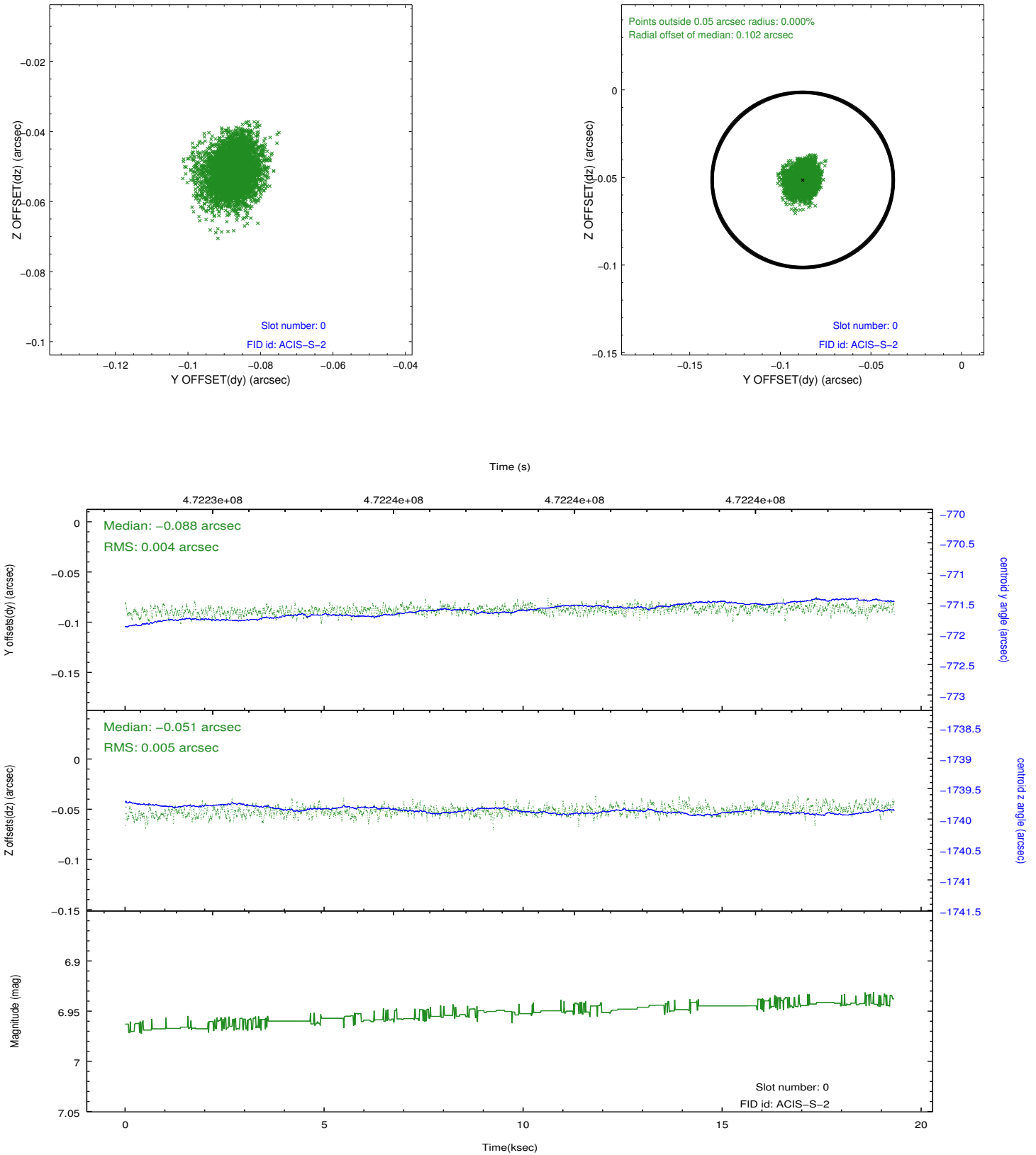


## 2.4.5 Slot 7

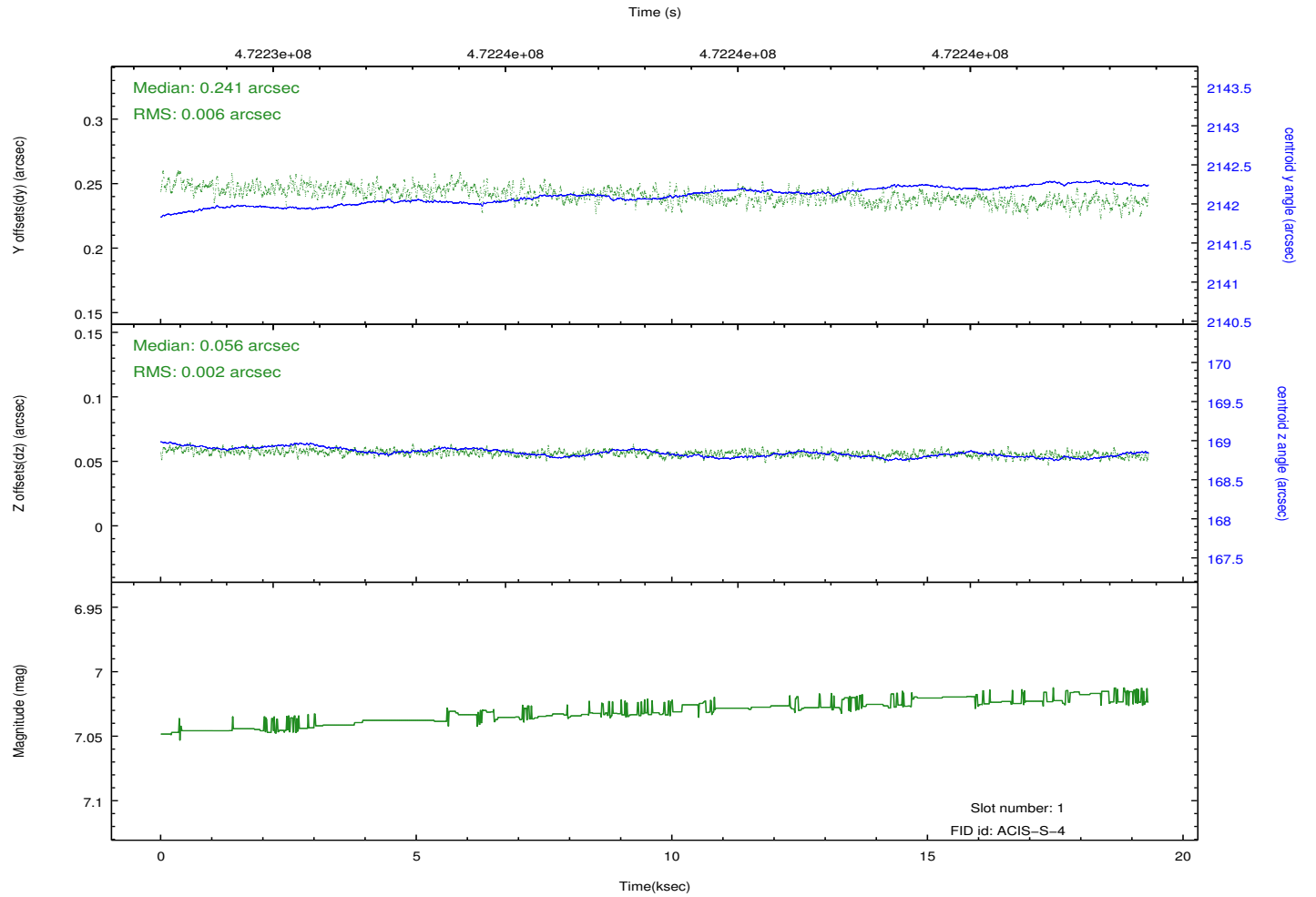
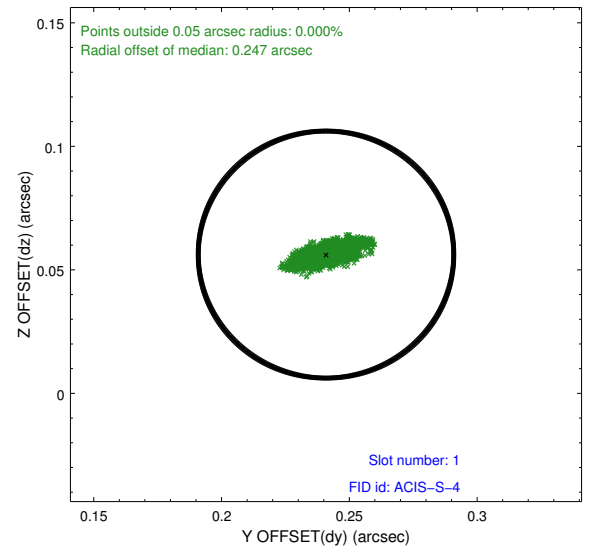
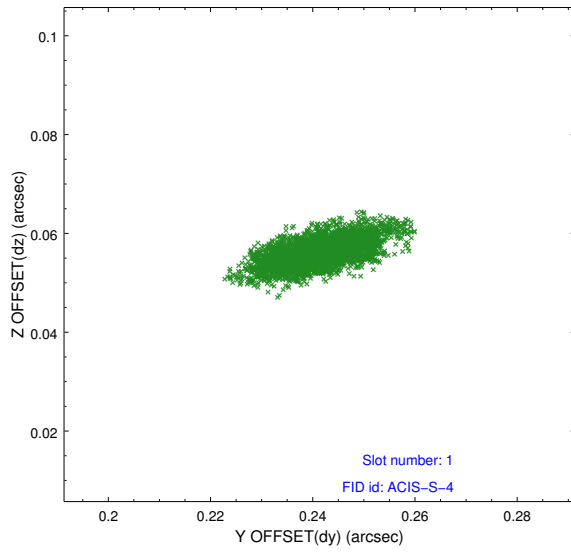


## 2.5 FID Slots

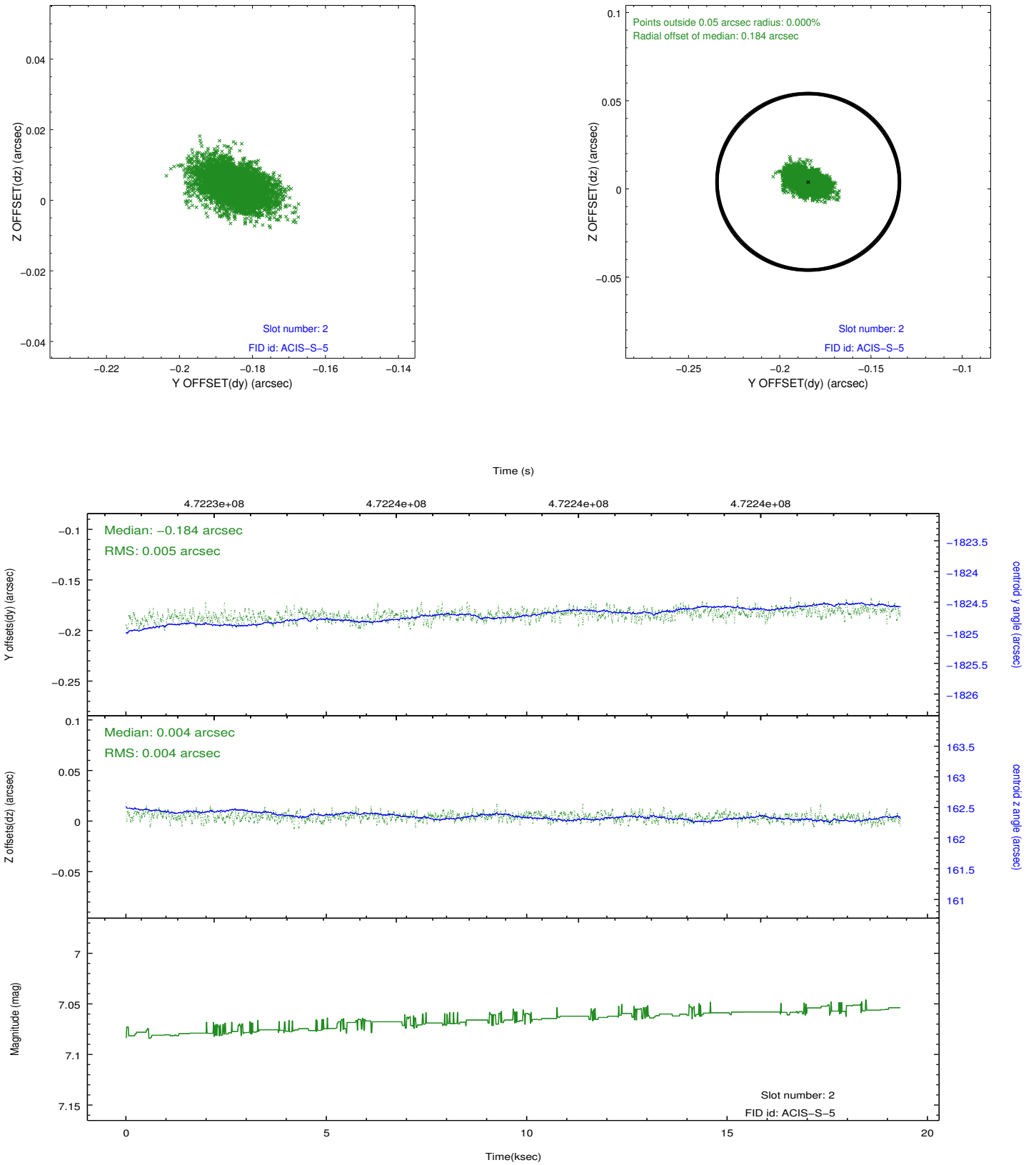
### 2.5.1 Slot 0



## 2.5.2 Slot 1



### 2.5.3 Slot 2



# A Summary

## A.1 Status

V&V Scientist	Jen Lauer
V&V Date (YYYY-MM-DD)	2014.12.04
V&V Edition	1
V&V Disposition and Status	OK
V&V Charge Time	19.206379401803

## A.2 Comments

These data have been reprocessed with new aspect alignment calibration files that correct small mean offsets (up to 0.4 arcsecs) and improve overall astrometric accuracy. The new calibration was determined using data from the time period being reprocessed and was performed using cross-correlation of X-ray sources with radio and optical counterparts.