

V&V Reference Report

L2 ASCDS Version : 8.4.3

Observation 12510 - L2 Version 3
Chandra X-Ray Center

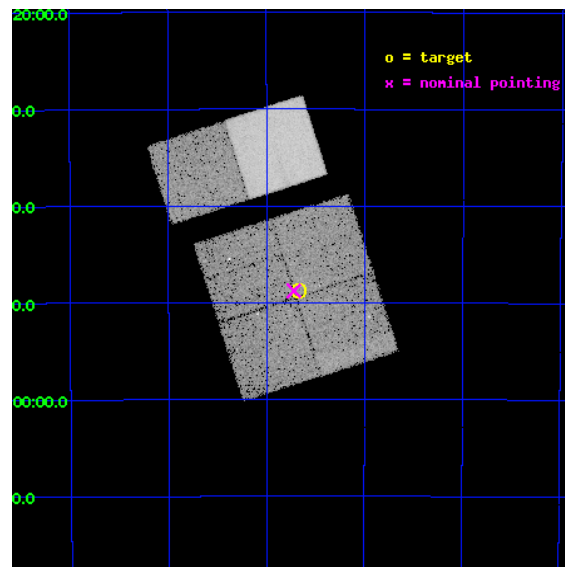
L2 Processing Date : Feb 11 2012

Contents

1	Front	2
2	OBI	3
2.1	OBI	3
2.1.1	Images	3
2.1.2	Bias	3
2.1.3	Parameters	4
2.1.4	Events	4
2.2	Compared Parameters	5
2.3	Aspect	6
2.4	Star Slots	9
2.4.1	Slot 3	9
2.4.2	Slot 4	10
2.4.3	Slot 5	11
2.4.4	Slot 6	12
2.4.5	Slot 7	13
2.5	FID Slots	14
2.5.1	Slot 0	14
2.5.2	Slot 1	15
2.5.3	Slot 2	16
A	Summary	17
A.1	Status	17
A.2	Comments	17

1 Front

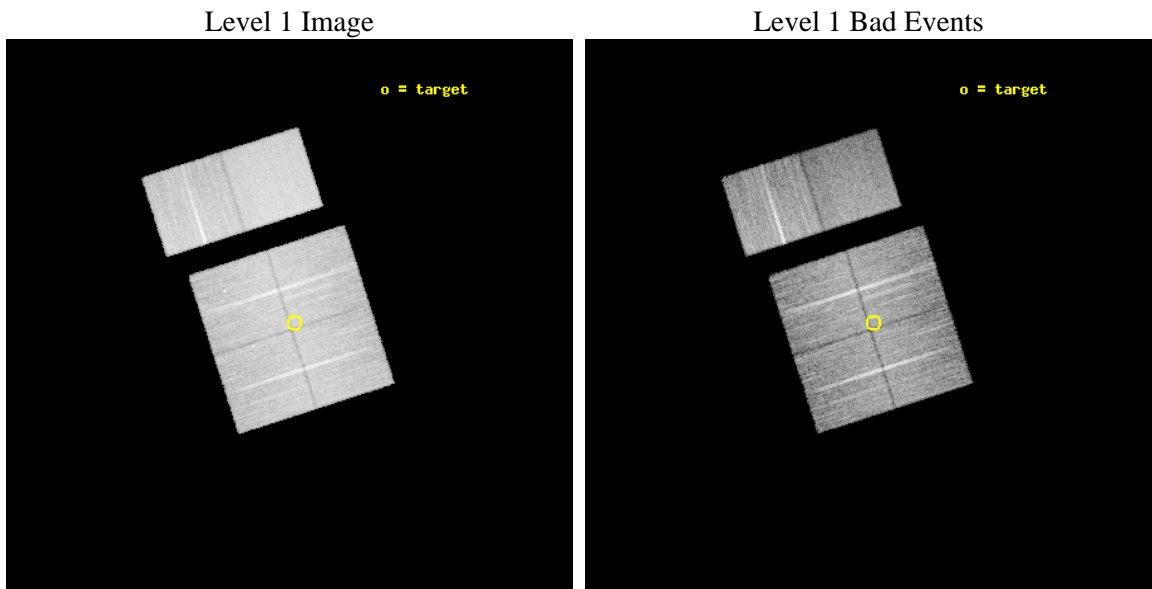
seq_num	401251	Sequence number
obs_id	12510	Observation id
title	Census of the Normal Spiral Arm Region	Proposal title
observer	Dr. John Tomsick	Principal investigator
object	Norma Region	Source name
dtcycle	0	
cycle	P	events from which exps? Prim/Second/Both
ra_targ	250.168367	Observer's specified target RA [deg]
dec_targ	-46.812851	Observer's specified target Dec [deg]
ra_nom	250.18018964235	Nominal RA [deg]
dec_nom	-46.812895553188	Nominal Dec [deg]
roll_nom	342.21729976294	Nominal Roll [deg]
revision	3	Processing version of data
ontime	20204.473843634	Sum of GTIs [s]
livetime	19948.632630152	Livetime [s]
ontime0	20207.591743946	Sum of GTIs [s]
ontime1	20207.632783949	Sum of GTIs [s]
ontime2	20207.673823953	Sum of GTIs [s]
ontime3	20204.473843634	Sum of GTIs [s]
ontime6	20207.796943963	Sum of GTIs [s]
ontime7	20207.755903959	Sum of GTIs [s]
l2events	147655	Number of level 2 events



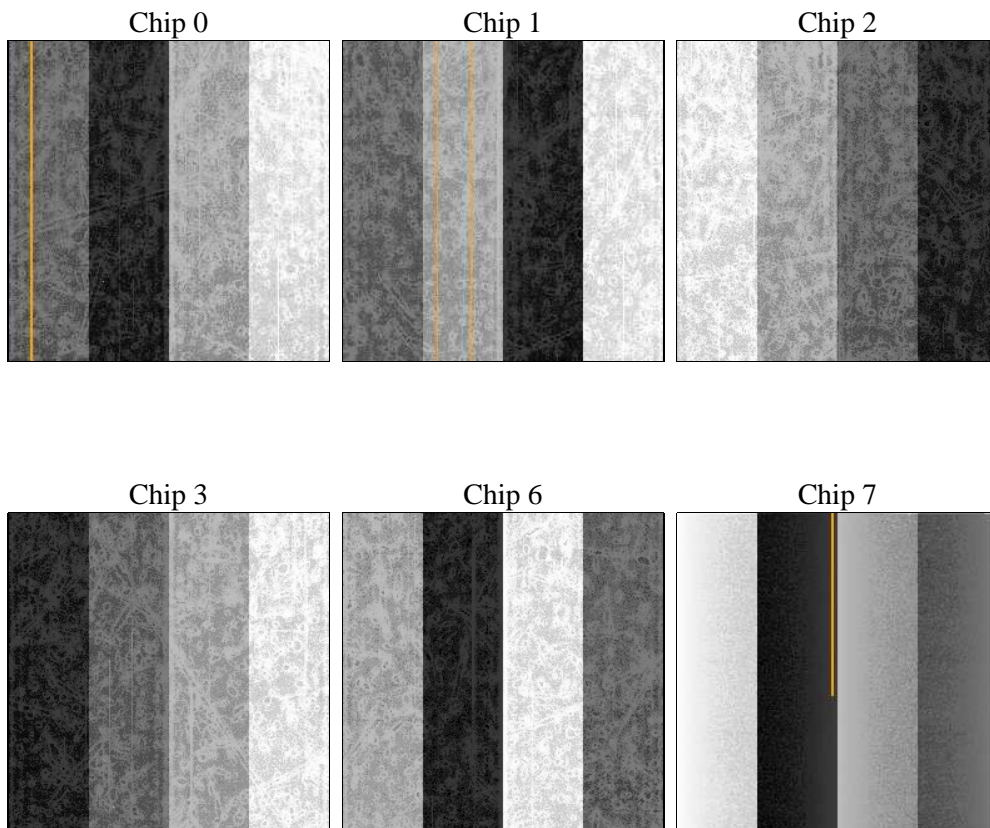
2 OBI

2.1 OBI

2.1.1 Images



2.1.2 Bias



2.1.3 Parameters

obi_num	1	Obi number	sched_exp_time	20150.553000	[s] Scheduled observation exposure time
ascdsver	8.4.3	Processing system revision	ontime	20204.473843634	Sum of GTIs [s]
caldsver	4.4.7	 	ontime0	20207.591743946	Sum of GTIs [s]
date	2012-02-11T18:40:34	Date and time of file creation	ontime1	20207.632783949	Sum of GTIs [s]
revision	3	Processing version of data	ontime2	20207.673823953	Sum of GTIs [s]
			ontime3	20204.473843634	Sum of GTIs [s]
			ontime6	20207.796943963	Sum of GTIs [s]
			ontime7	20207.755903959	Sum of GTIs [s]
			l1events	805133	Number of level 1 events

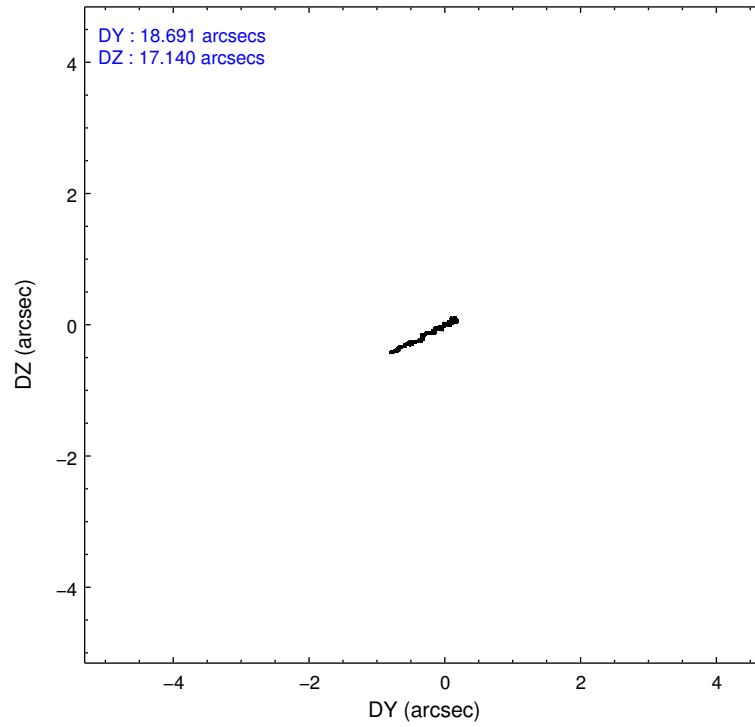
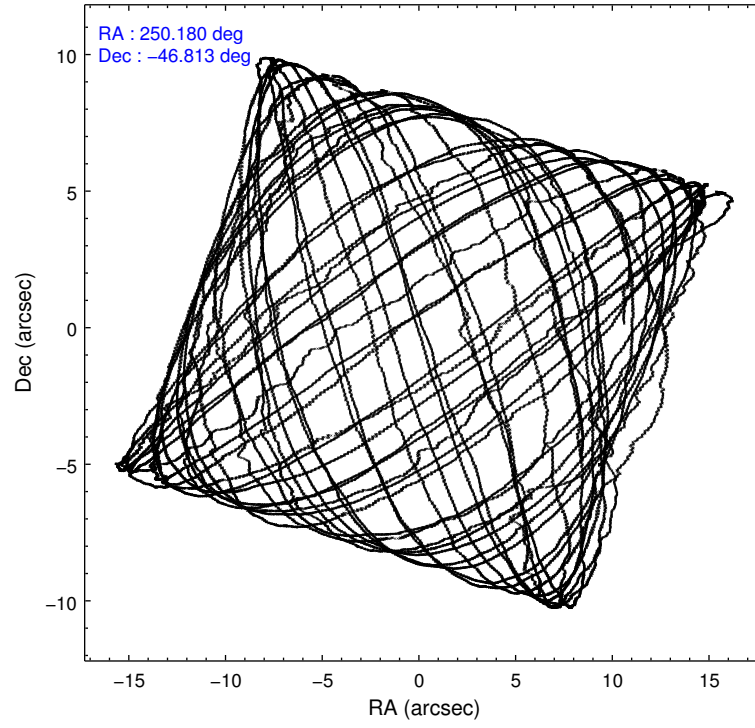
2.1.4 Events

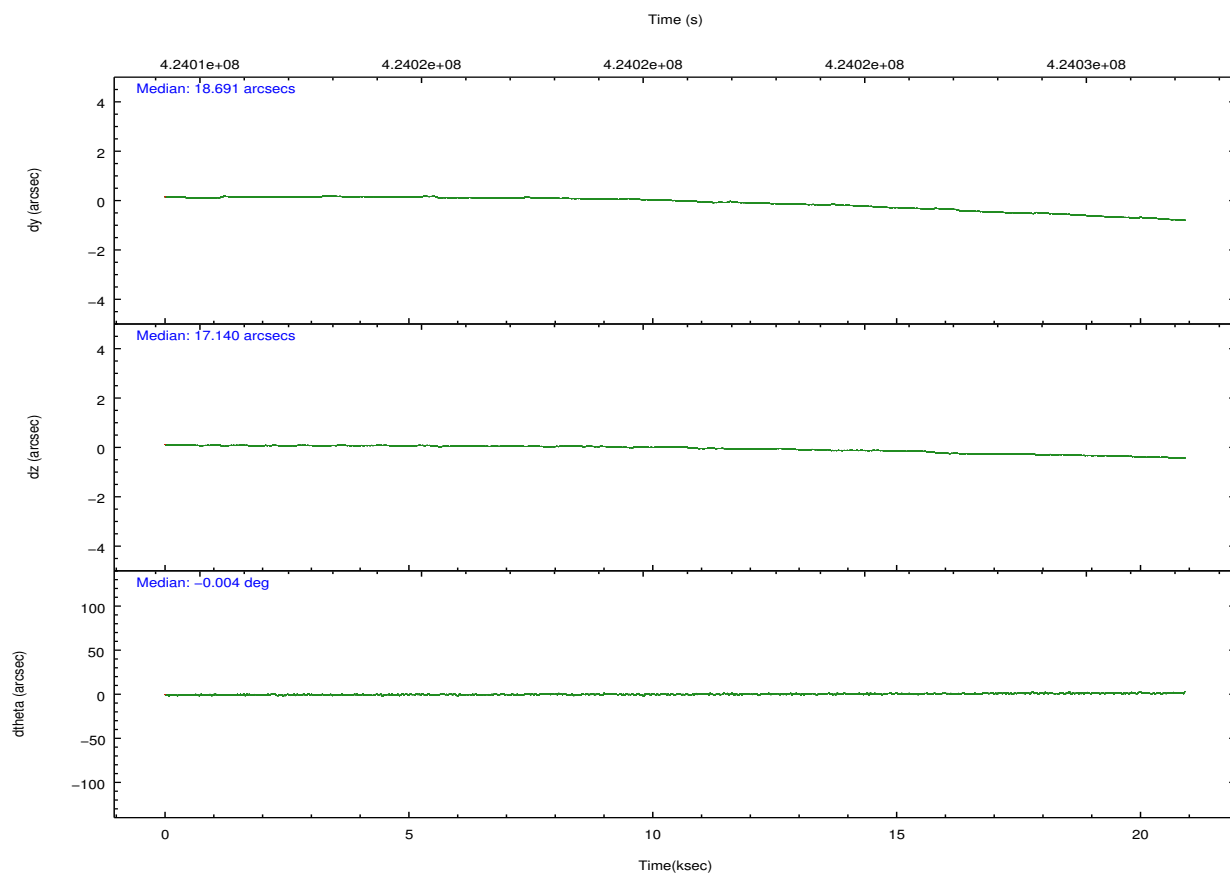
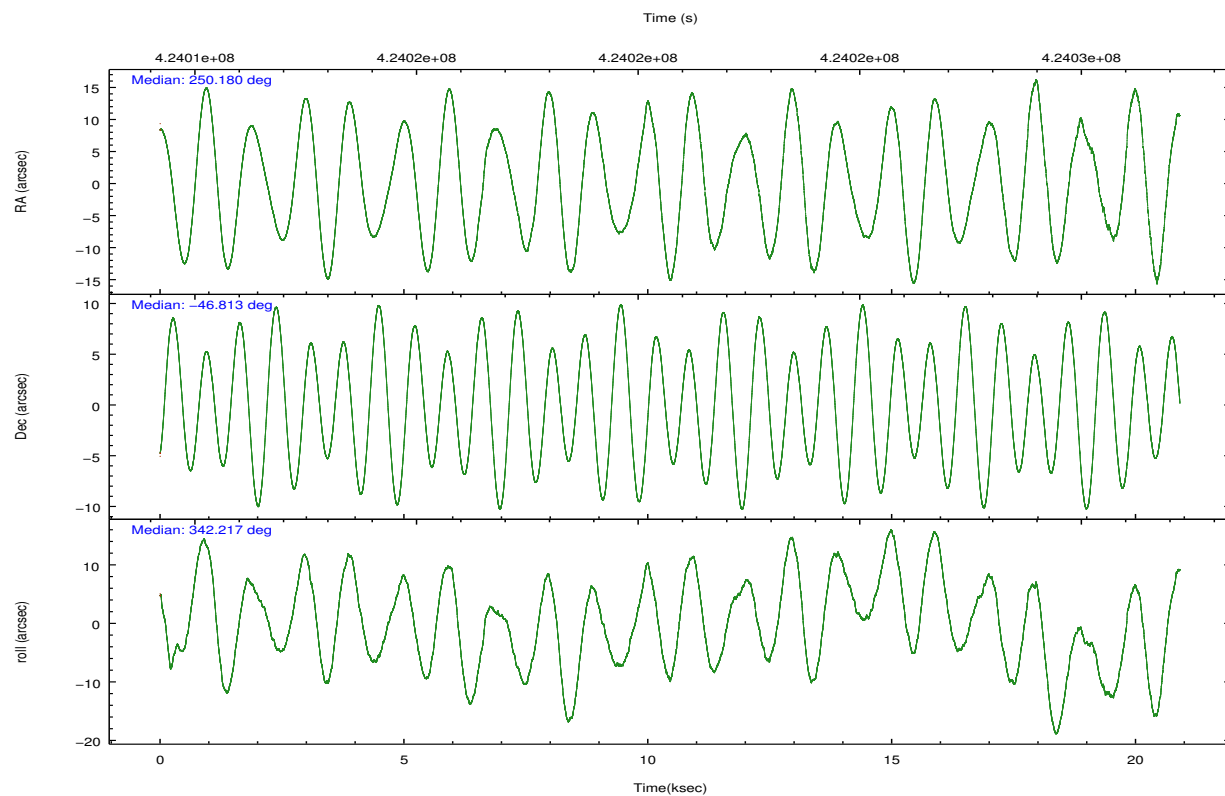
	ccd 0	ccd 1	ccd 2	ccd 3	ccd 6	ccd 7		ccd 0	ccd 1	ccd 2	ccd 3	ccd 6	ccd 7
level 1 events	119428	123112	129752	129179	136526	167136	grade 0 events	6567	7475	6836	6426	6761	7408
rejected events	102945	104573	113306	113318	119423	89429		5%	6%	5%	4%	4%	4%
rejected %	86%	84%	87%	87%	87%	53%	grade 1 events	76	91	83	83	79	198
								0%	0%	0%	0%	0%	0%
							grade 2 events	3730	4167	3686	3346	3699	16088
								3%	3%	2%	2%	2%	9%
							grade 3 events	1681	1714	1504	1546	1576	6937
								1%	1%	1%	1%	1%	4%
							grade 4 events	1468	1728	1572	1597	1534	6653
								1%	1%	1%	1%	1%	3%
							grade 5 events	5464	5823	5145	6164	6232	17183
								4%	4%	3%	4%	4%	10%
							grade 6 events	3039	3460	2849	2946	3535	40641
								2%	2%	2%	2%	2%	24%
							grade 7 events	97403	98654	108077	107071	113110	72028
								81%	80%	83%	82%	82%	43%

2.2 Compared Parameters

Parameter	Planned	Actual	Parameter	Planned	Actual
Instrument	ACIS	ACIS	Obspar format version number	7	7
Detector	ACIS-012367	ACIS-012367	Obspar file type	PREDICTED	ACTUAL
Grating	NONE	NONE	Obspar update status	NONE	UPDATED
Data mode	VFAINT	VFAINT	CCD I0 on	Y	Y
Observation mode	POINTING	POINTING	CCD I1 on	Y	Y
[deg] Pointing RA	250.140936	250.1801896423457	CCD I2 on	Y	Y
[deg] Pointing Dec	-46.818848	-46.81289555318762	CCD I3 on	Y	Y
[deg] Pointing Roll	341.980002	342.2172997629366	CCD S0 on	N	N
[mm] SIM focus pos	-0.782348	-0.7809083437167272	CCD S1 on	N	N
[mm] SIM defocus	0	0.001439871863259334	CCD S2 on	O2	Y
[mm] SIM translation stage pos	-233.592463	-233.5874344608287	CCD S3 on	O1	Y
[mm] SIM translation stage offset	0	-0.005018542100998502	CCD S4 on	N	N
[s] Observation start time (MET)	424011031.184000	424009742.28688	CCD S5 on	N	N
Observation start date	2011-06-09T12:49:25	2011-06-09T12:29:02	Number of optional ACIS chips dropped	0	0
[s] Observation end time (MET)	424031182.184000	424031418.98801	On-chip summing requested	N	N
Observation end date	2011-06-09T18:25:16	2011-06-09T18:30:18	Subarray requested	NONE	NONE
Read mode	TIMED	TIMED	Alternating exposures requested	N	N
			[s] Primary exposure time	0.000000	3.2

2.3 Aspect



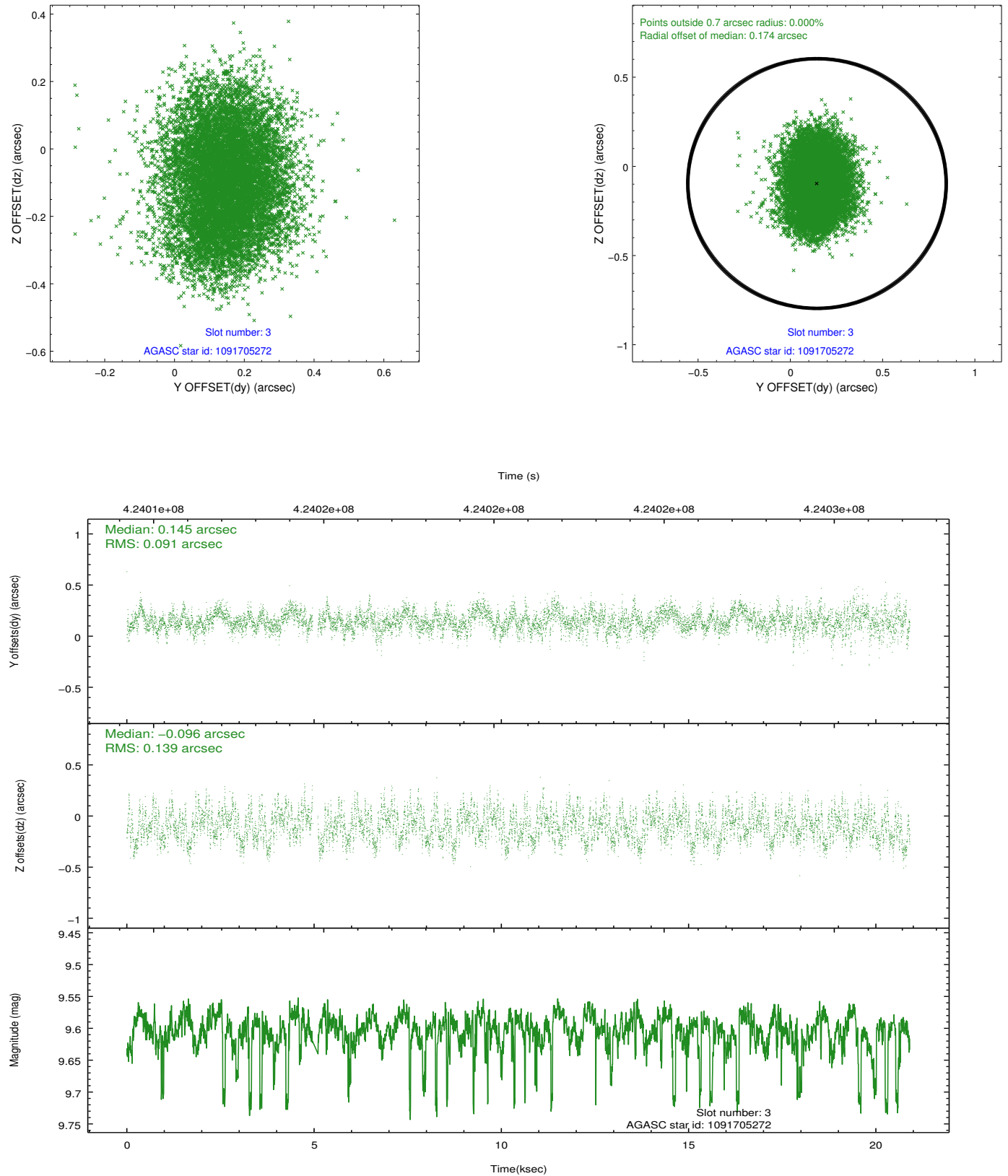


Slot Statistics

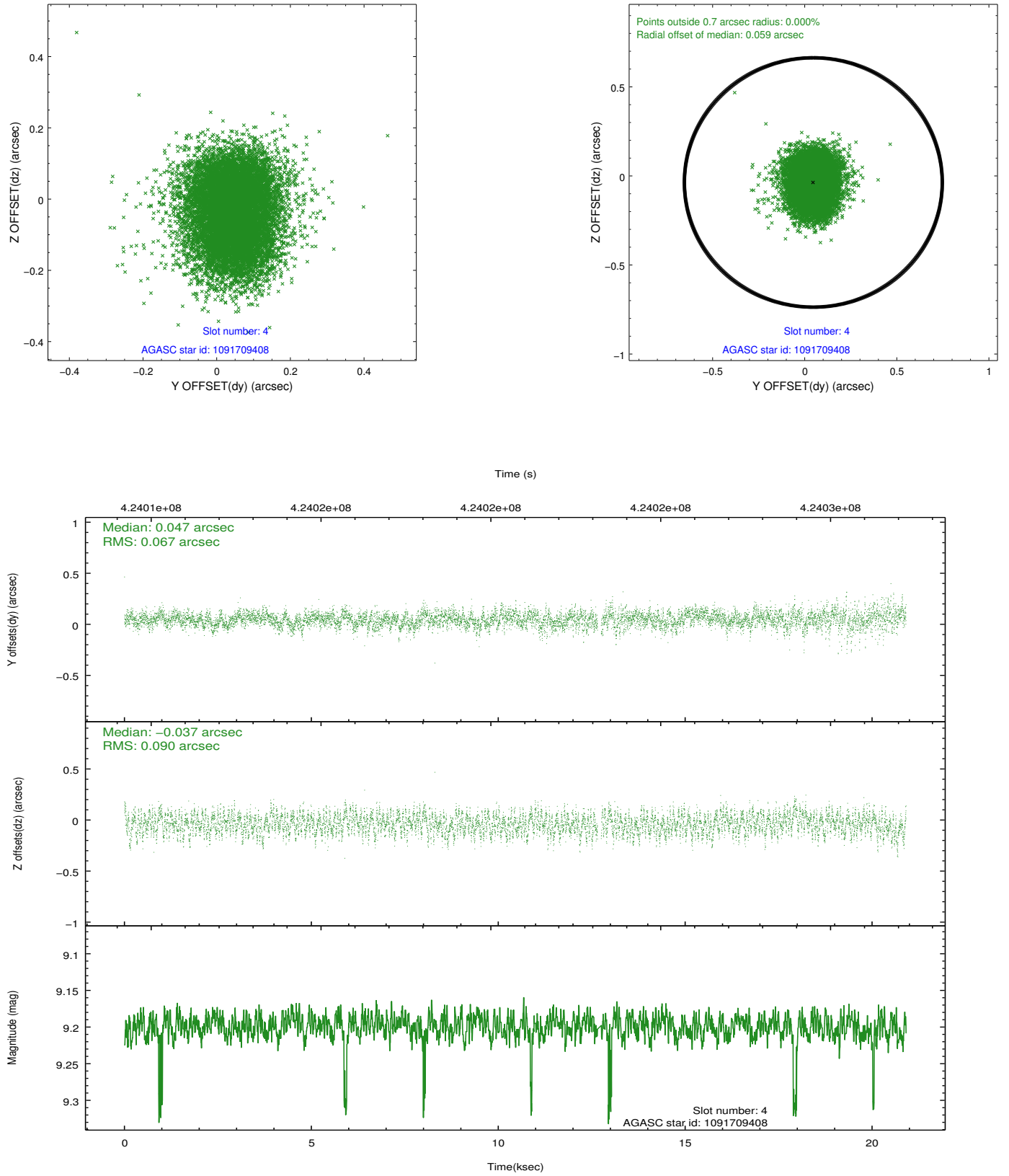
slot	status	id	mag	n_pts	med_dy	med_dz	dr1	dr2	ra	dec	mean_y	mean_z
0	FID	ACIS-I-1	7.00	5099	0.078	-0.046	0.011	0.022	0.000000	0.000000	920.90	-840.73
1	FID	ACIS-I-2	6.91	5099	-0.003	-0.036	0.013	0.023	0.000000	0.000000	-773.17	-847.31
2	FID	ACIS-I-5	6.97	5100	-0.167	0.155	0.012	0.021	0.000000	0.000000	-1827.76	1056.76
3	GUIDE	1091705272	9.60	10041	0.145	-0.096	0.178	0.282	249.477650	-47.308944	-990.87	-2185.22
4	GUIDE	1091709408	9.20	10120	0.047	-0.037	0.118	0.193	249.304466	-47.312562	-1387.70	-2332.39
5	GUIDE	1091709800	9.18	10195	0.033	-0.043	0.115	0.188	249.801955	-47.310212	-237.85	-1941.30
6	GUIDE	1091842752	7.52	10199	-0.161	-0.060	0.096	0.162	250.934866	-47.105704	2172.98	-389.81
7	GUIDE	1091702776	9.75	10131	-0.060	0.245	0.150	0.252	249.358387	-47.319818	-1254.42	-2314.65

2.4 Star Slots

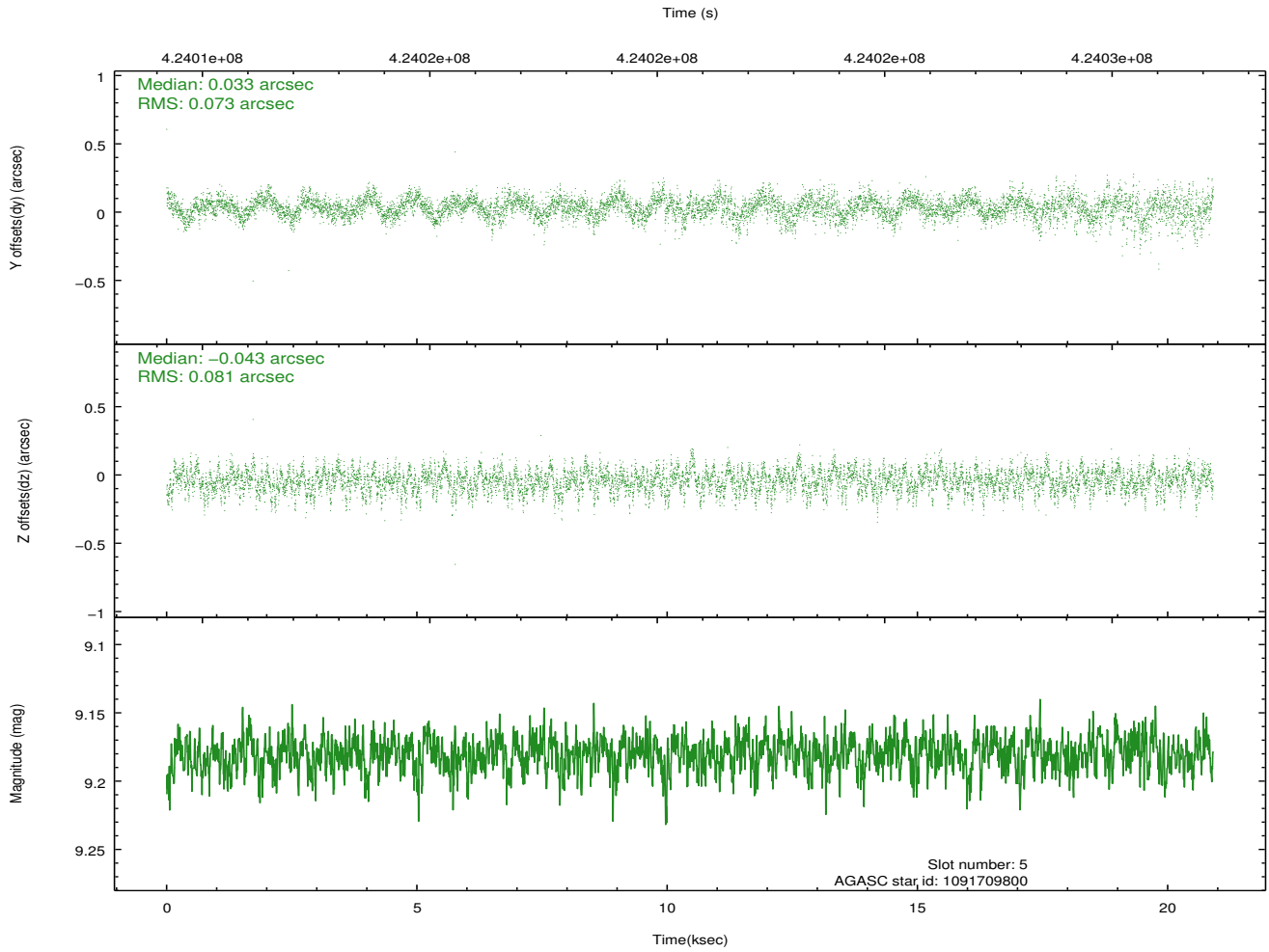
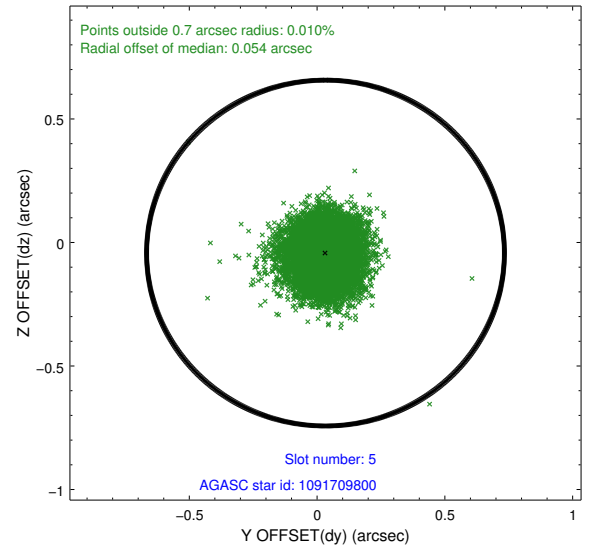
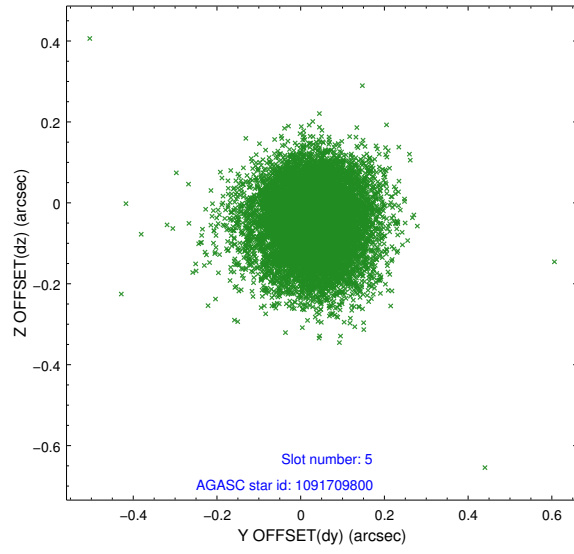
2.4.1 Slot 3



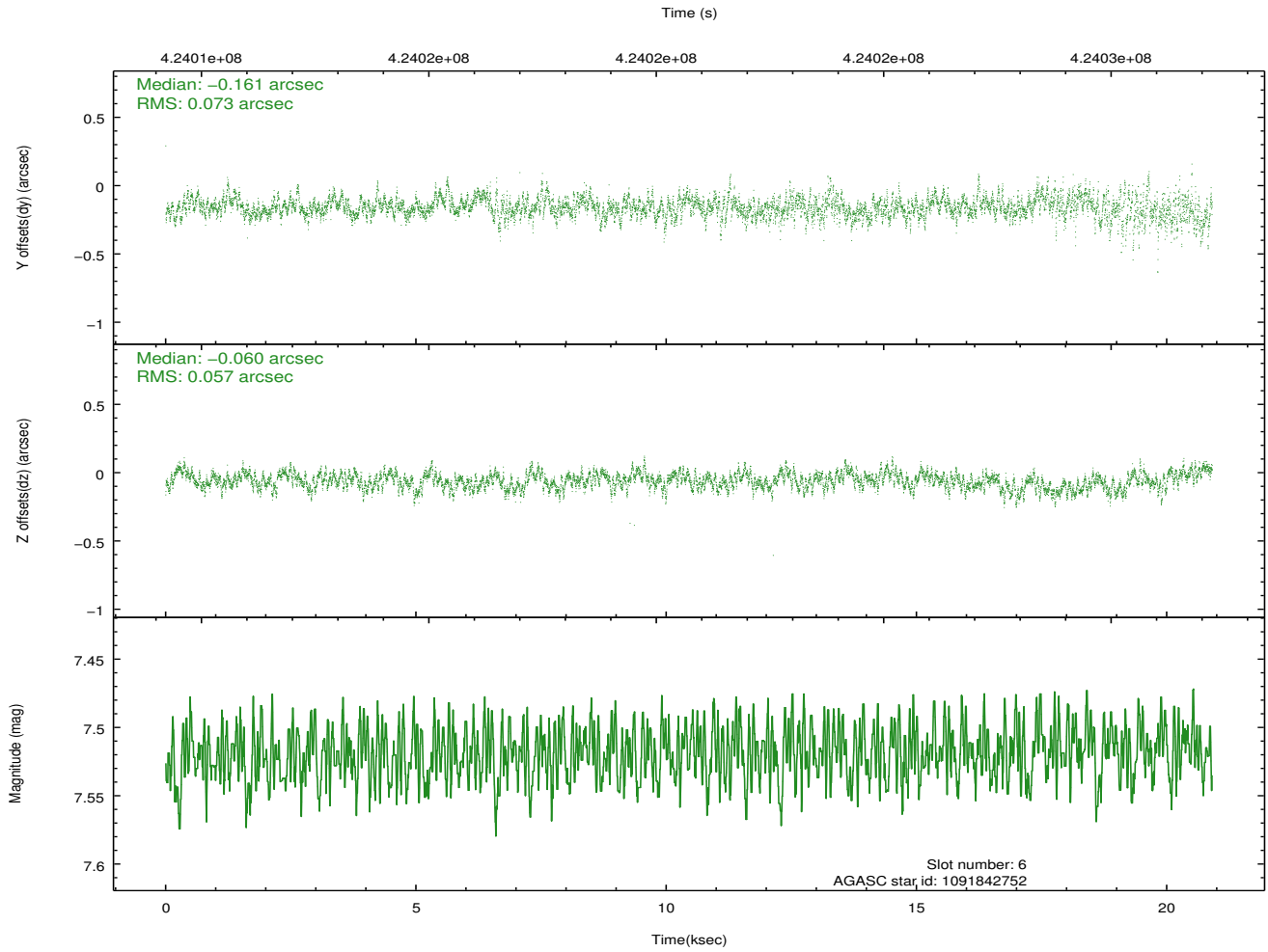
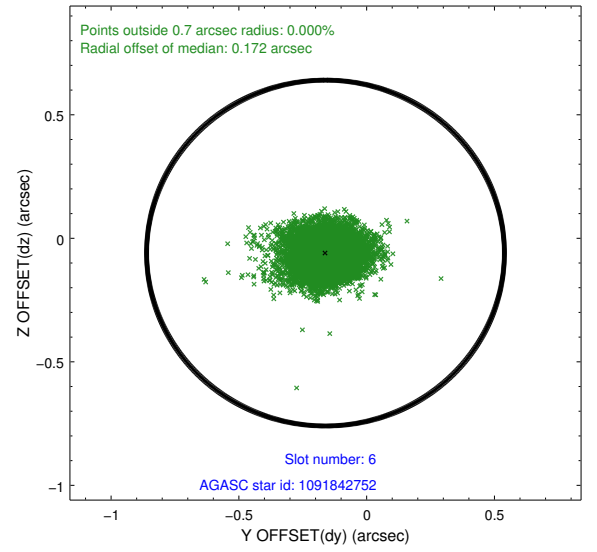
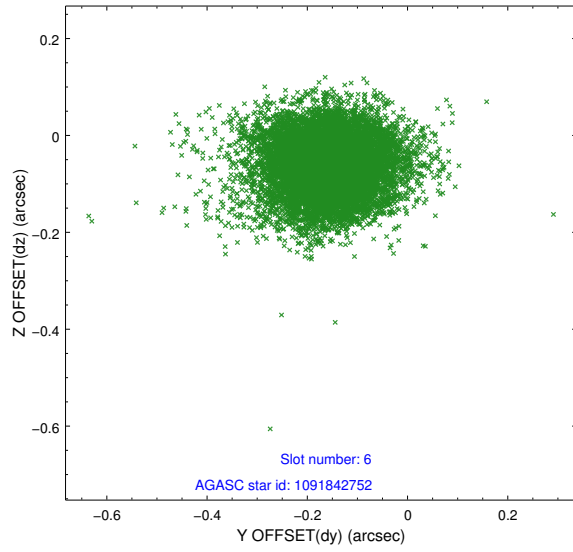
2.4.2 Slot 4



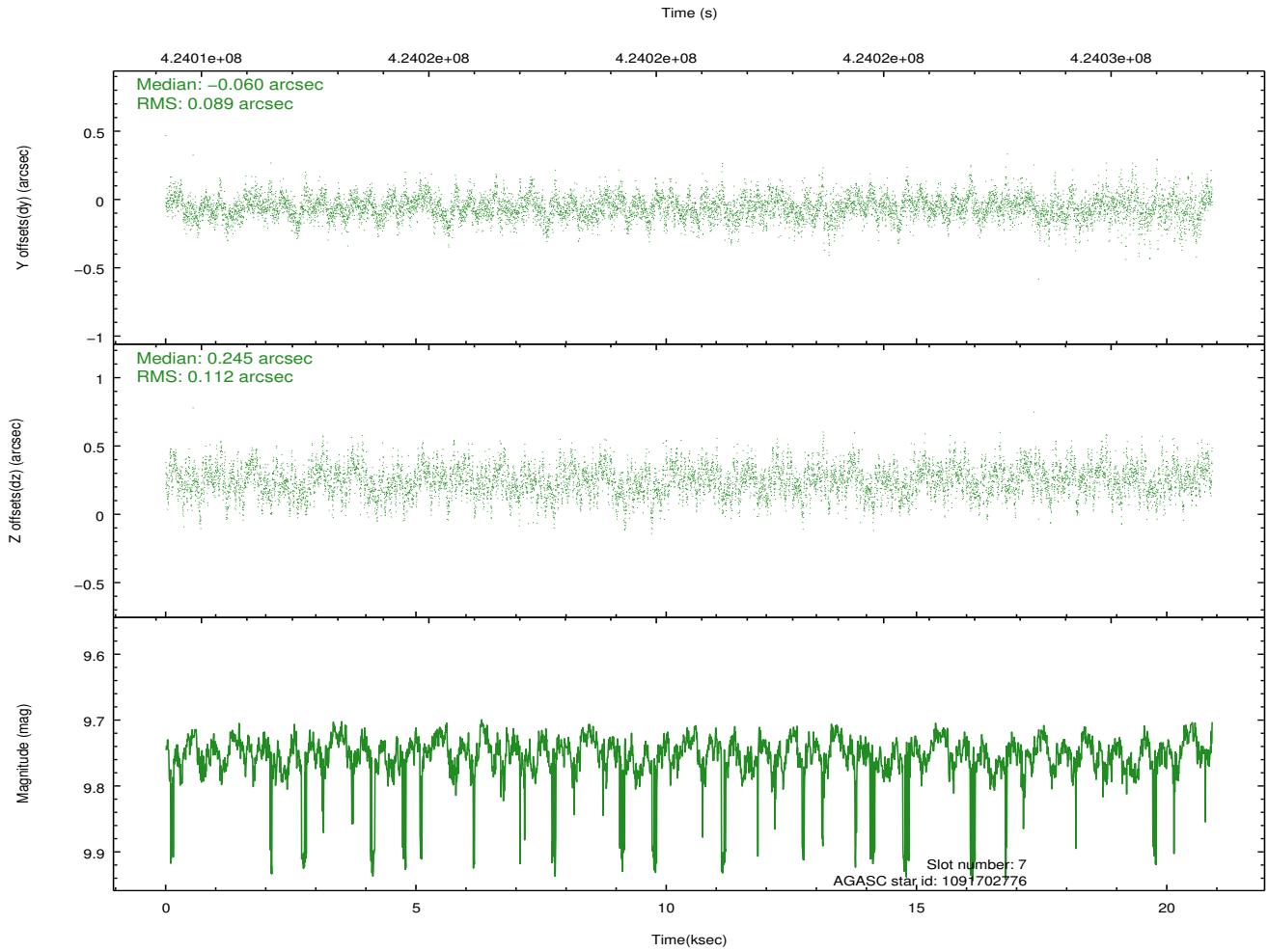
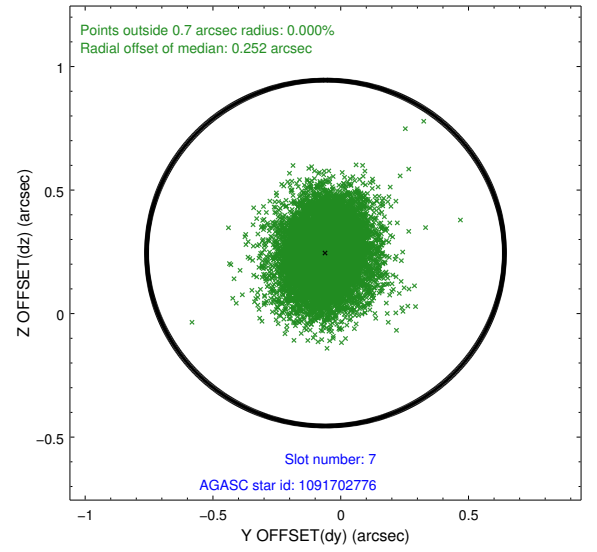
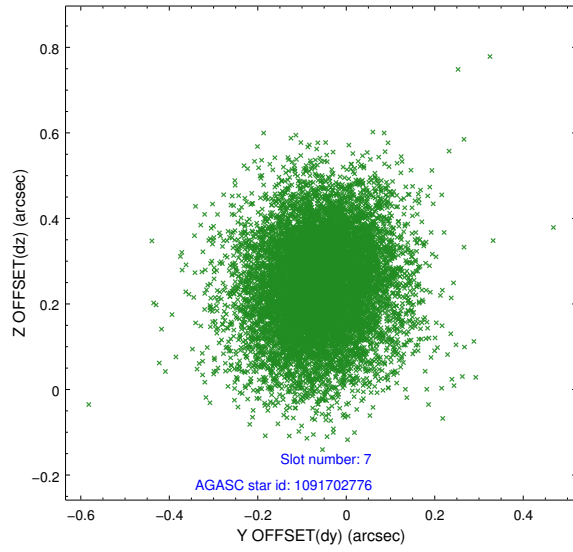
2.4.3 Slot 5



2.4.4 Slot 6

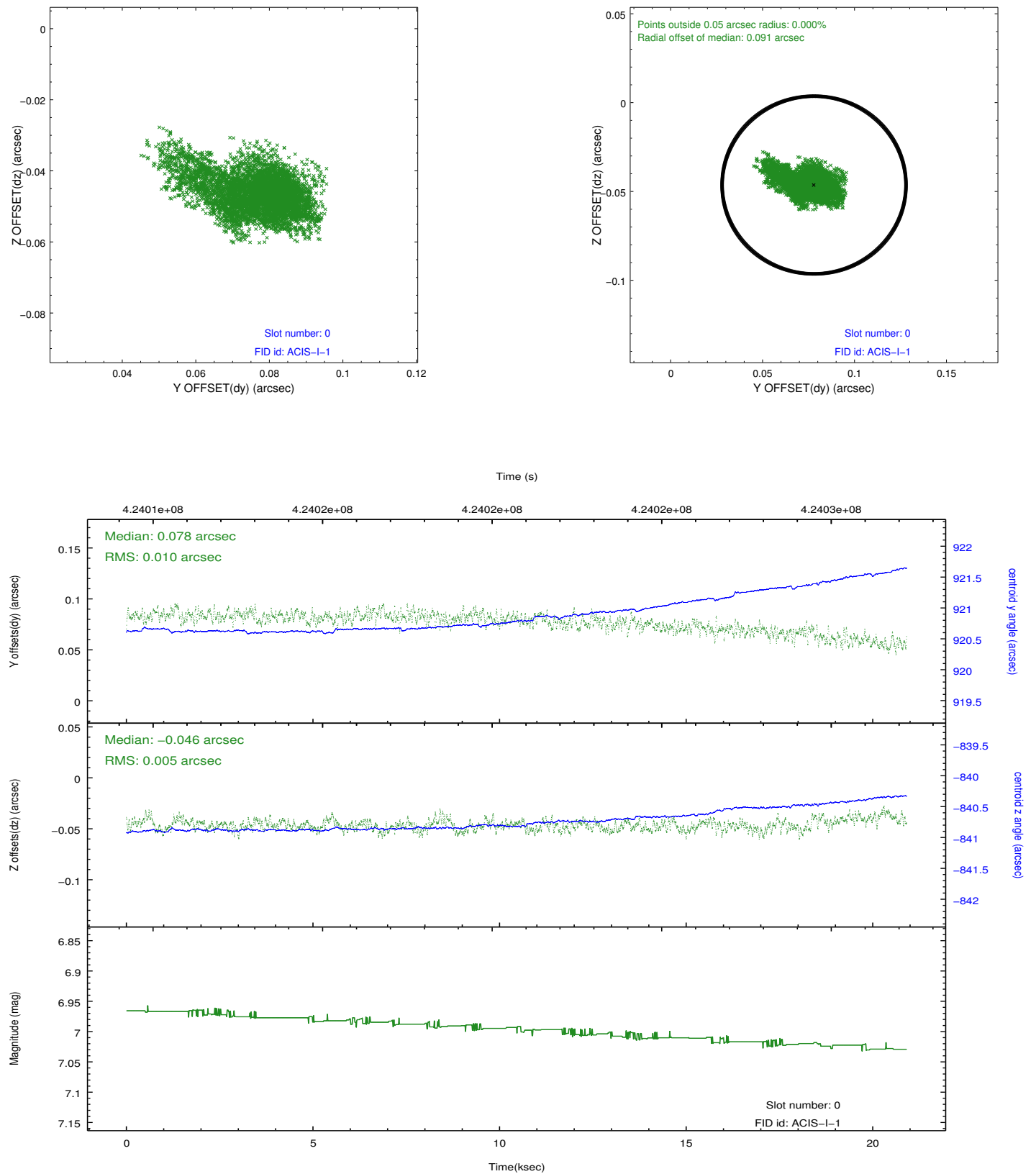


2.4.5 Slot 7

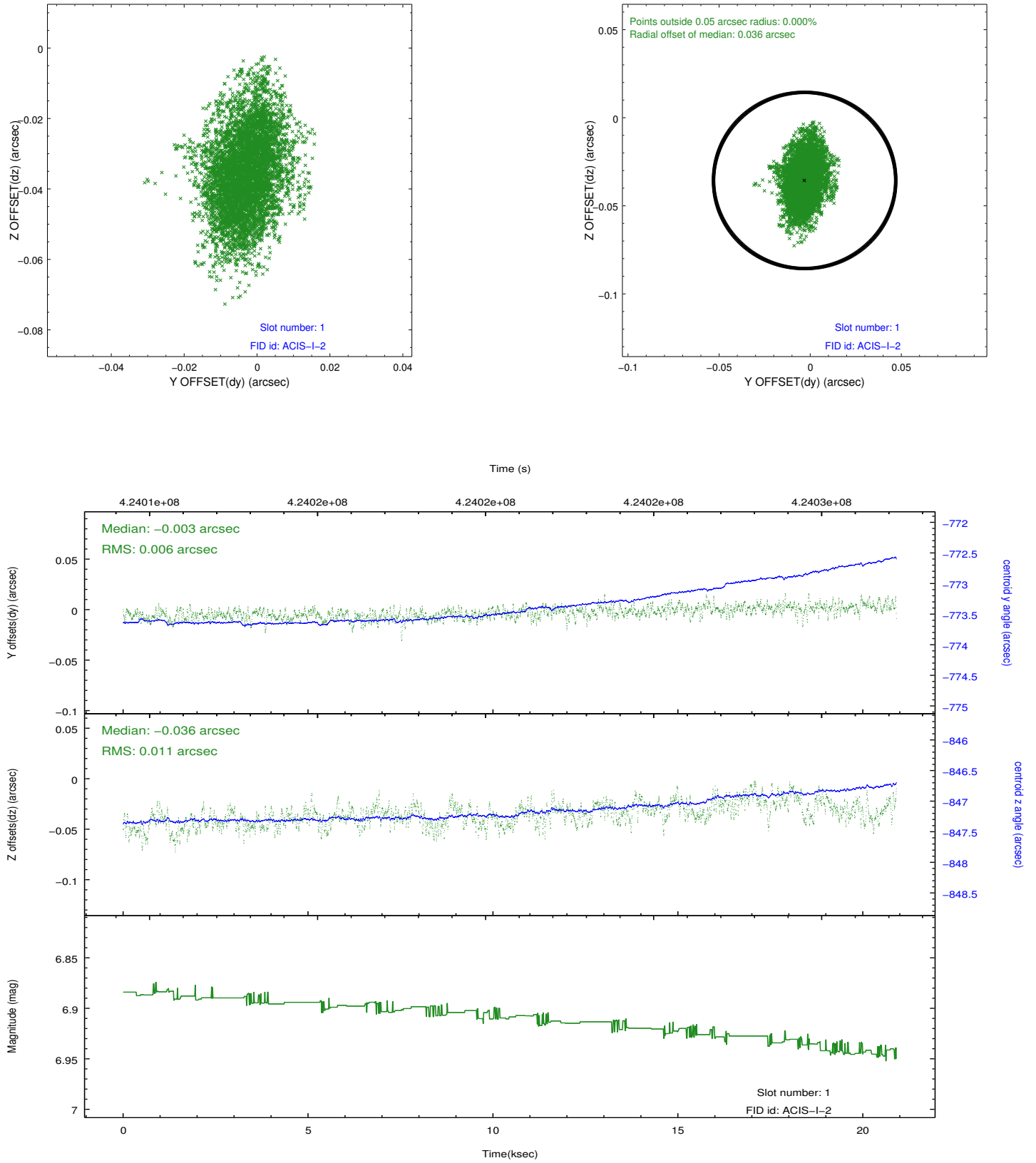


2.5 FID Slots

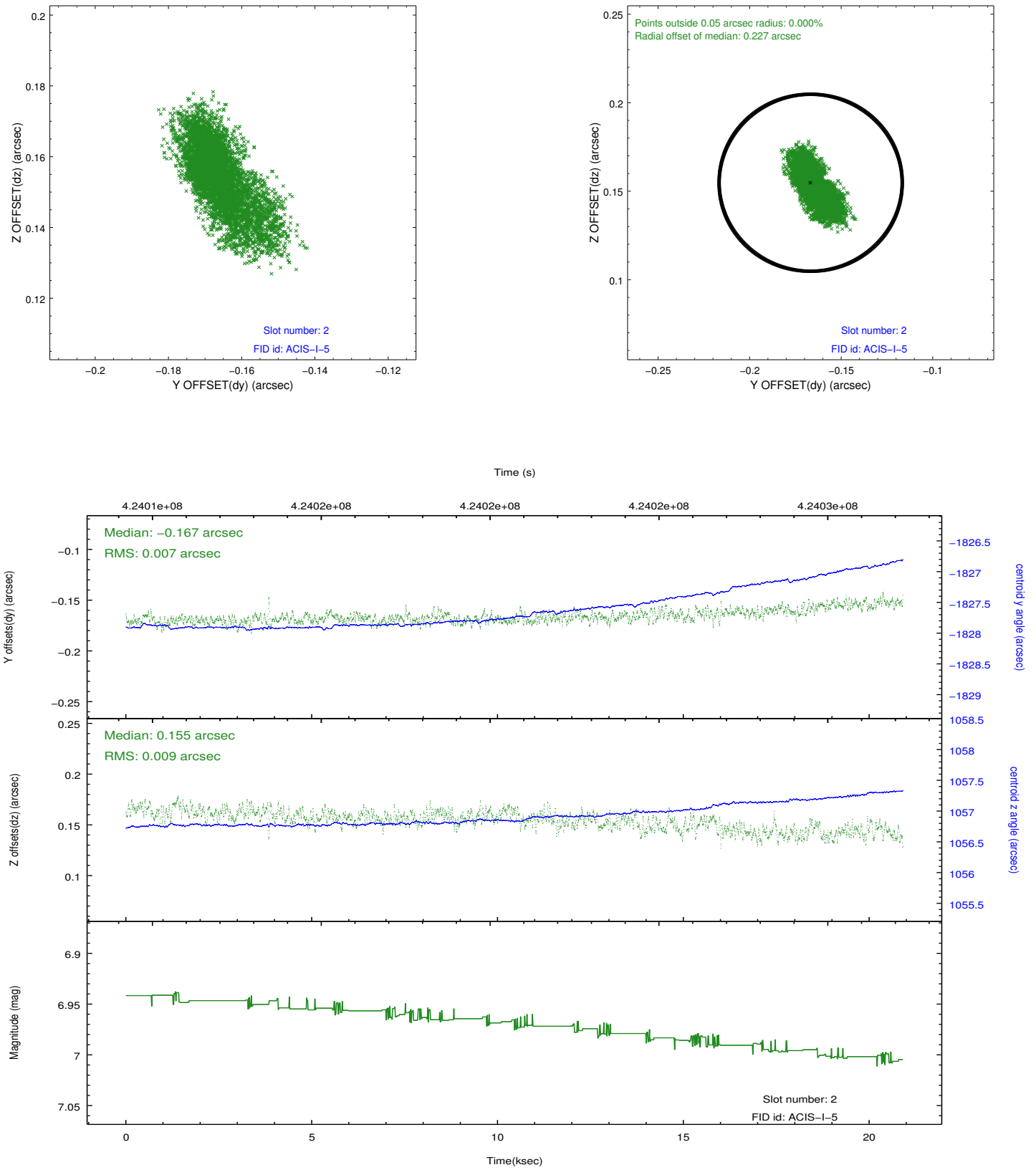
2.5.1 Slot 0



2.5.2 Slot 1



2.5.3 Slot 2



A Summary

A.1 Status

V&V Scientist	Jen Lauer
V&V Date (YYYY-MM-DD)	2012.02.14
V&V Edition	1
V&V Disposition and Status	OK
V&V Charge Time	20.204473841369

A.2 Comments

Joint proposal: NOAO