

# V&V Reference Report

## L2 ASCDS Version : 8.4.5

Observation 11880 - L2 Version 2  
Chandra X-Ray Center

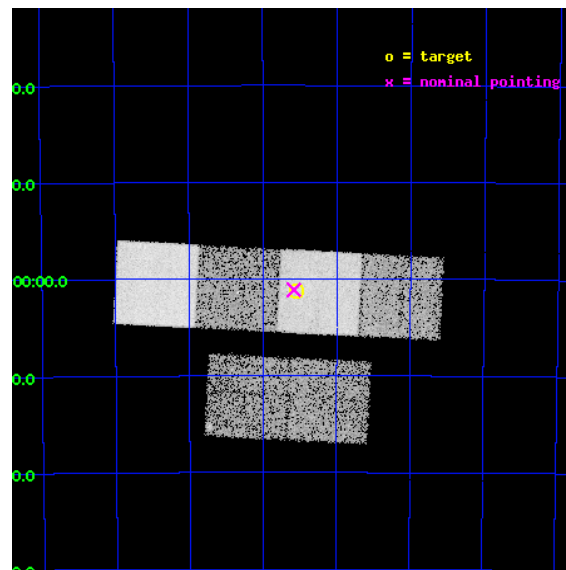
L2 Processing Date : Jun 25 2012

## Contents

<b>1</b>	<b>Front</b>	<b>2</b>
<b>2</b>	<b>OBI</b>	<b>3</b>
2.1	OBI . . . . .	3
2.1.1	Images . . . . .	3
2.1.2	Bias . . . . .	3
2.1.3	Parameters . . . . .	4
2.1.4	Events . . . . .	4
2.2	Compared Parameters . . . . .	5
2.3	Aspect . . . . .	6
2.4	Star Slots . . . . .	9
2.4.1	Slot 3 . . . . .	9
2.4.2	Slot 4 . . . . .	10
2.4.3	Slot 5 . . . . .	11
2.4.4	Slot 6 . . . . .	12
2.4.5	Slot 7 . . . . .	13
2.5	FID Slots . . . . .	14
2.5.1	Slot 0 . . . . .	14
2.5.2	Slot 1 . . . . .	15
2.5.3	Slot 2 . . . . .	16
<b>A</b>	<b>Summary</b>	<b>17</b>
A.1	Status . . . . .	17
A.2	Comments . . . . .	17

# 1 Front

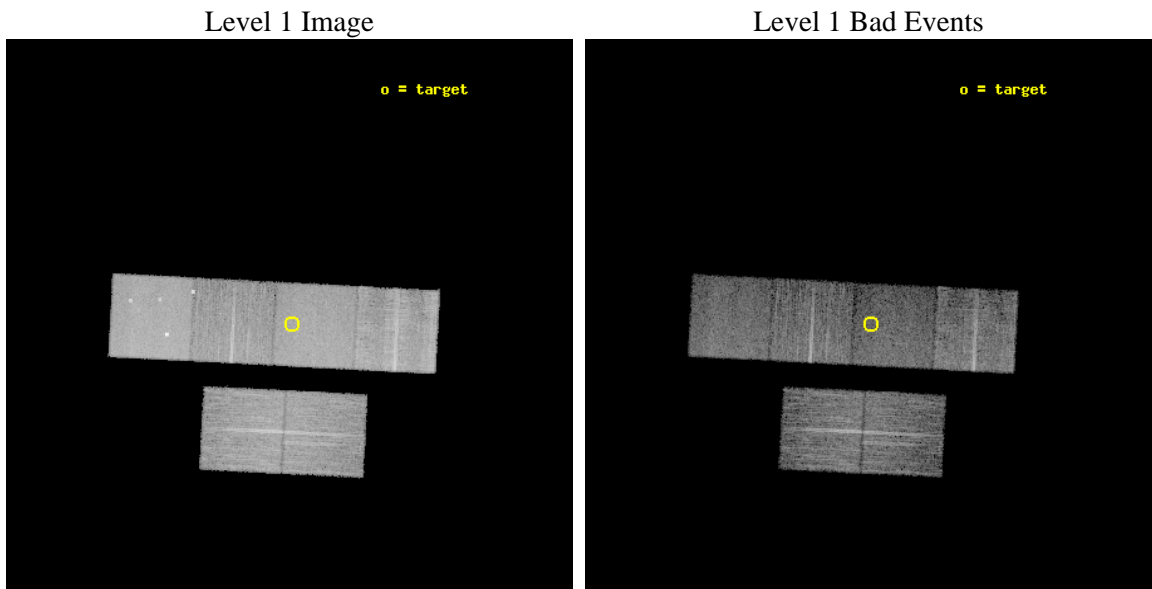
seq_num	900931	Sequence number
obs_id	11880	Observation id
title	GTO ChIcAGO: Chandra Identification of ASCA Galactic Objects	Propo
observer	Dr. Stephen Murray	Principal investigator
object	AX J145732-5901	Source name
dtcycle	0	&#160
cycle	P	events from which exps? Prim/Second/Both
ra_targ	224.3875	Observer's specified target RA [deg]
dec_targ	-59.021667	Observer's specified target Dec [deg]
ra_nom	224.39521139909	Nominal RA [deg]
dec_nom	-59.018857531169	Nominal Dec [deg]
roll_nom	2.93044560521	Nominal Roll [deg]
revision	2	Processing version of data
ontime	10156.799962223	Sum of GTIs [s]
livetime	10028.18844541	Livetime [s]
ontime2	10156.799962223	Sum of GTIs [s]
ontime3	10156.799962223	Sum of GTIs [s]
ontime5	10156.799962223	Sum of GTIs [s]
ontime6	10156.799962223	Sum of GTIs [s]
ontime7	10156.799962223	Sum of GTIs [s]
ontime8	10156.799962223	Sum of GTIs [s]
l2events	125258	Number of level 2 events



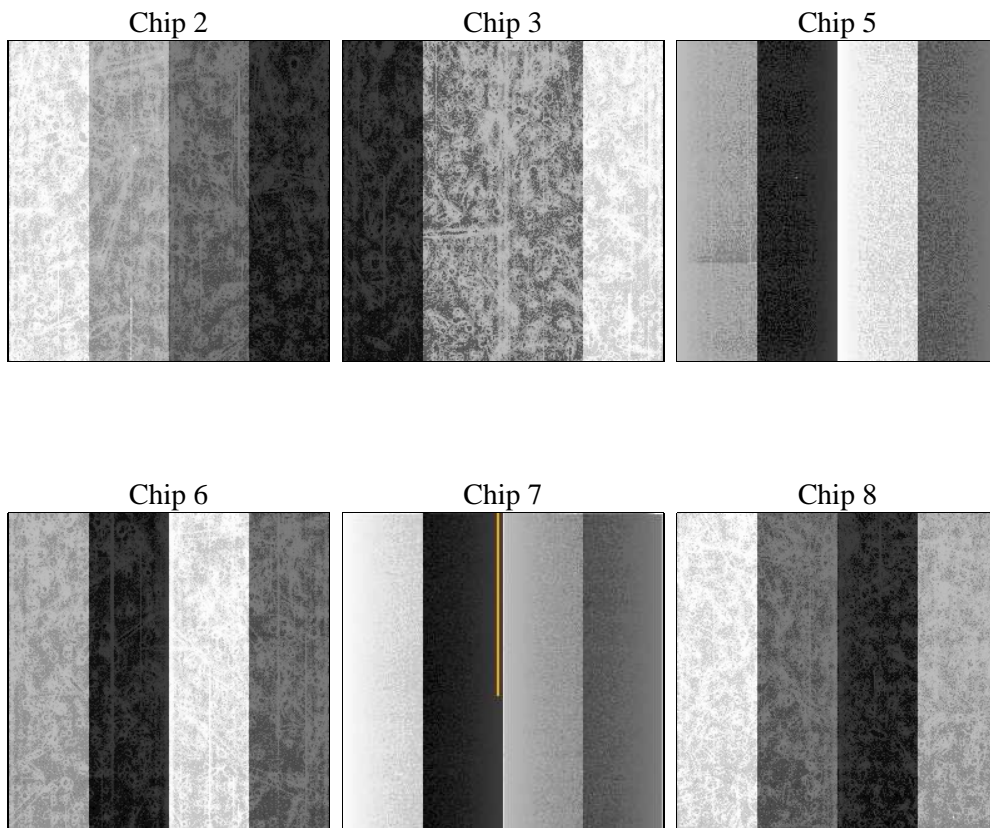
## 2 OBI

### 2.1 OBI

#### 2.1.1 Images



#### 2.1.2 Bias



### 2.1.3 Parameters

obi_num	0	Obi number	sched_exp_time	10000.000000	[s] Scheduled observation exposure time
ascdsver	8.4.5	Processing system revision	ontime	10156.799962223	Sum of GTIs [s]
caldbver	4.4.10	&#160	ontime2	10156.799962223	Sum of GTIs [s]
date	2012-06-25T09:57:56	Date and time of file creation	ontime3	10156.799962223	Sum of GTIs [s]
revision	2	Processing version of data	ontime5	10156.799962223	Sum of GTIs [s]
			ontime6	10156.799962223	Sum of GTIs [s]
			ontime7	10156.799962223	Sum of GTIs [s]
			ontime8	10156.799962223	Sum of GTIs [s]
			l1events	540821	Number of level 1 events

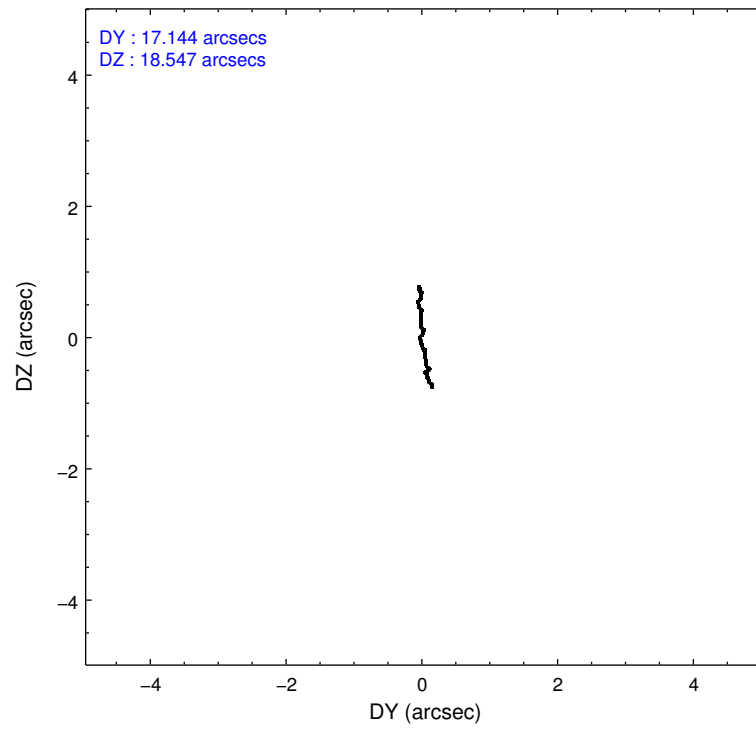
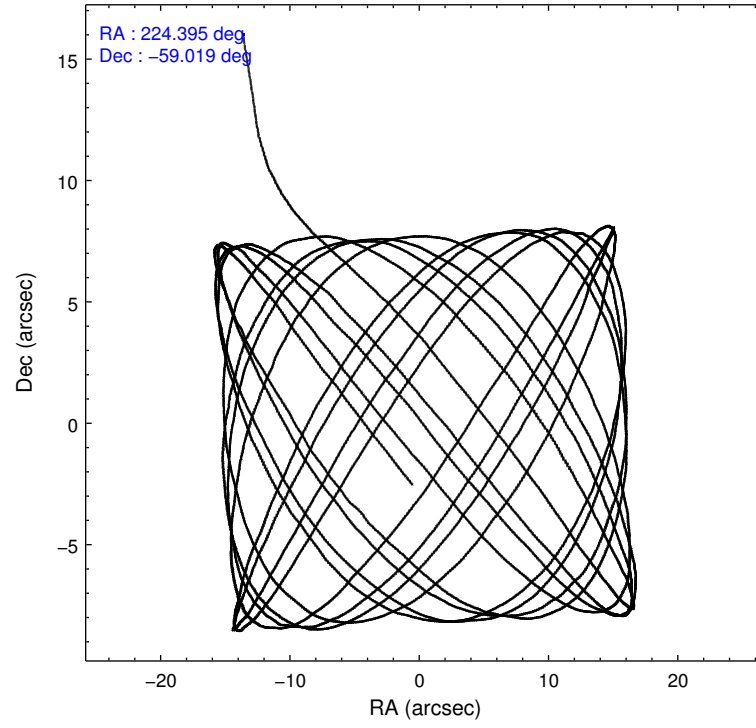
### 2.1.4 Events

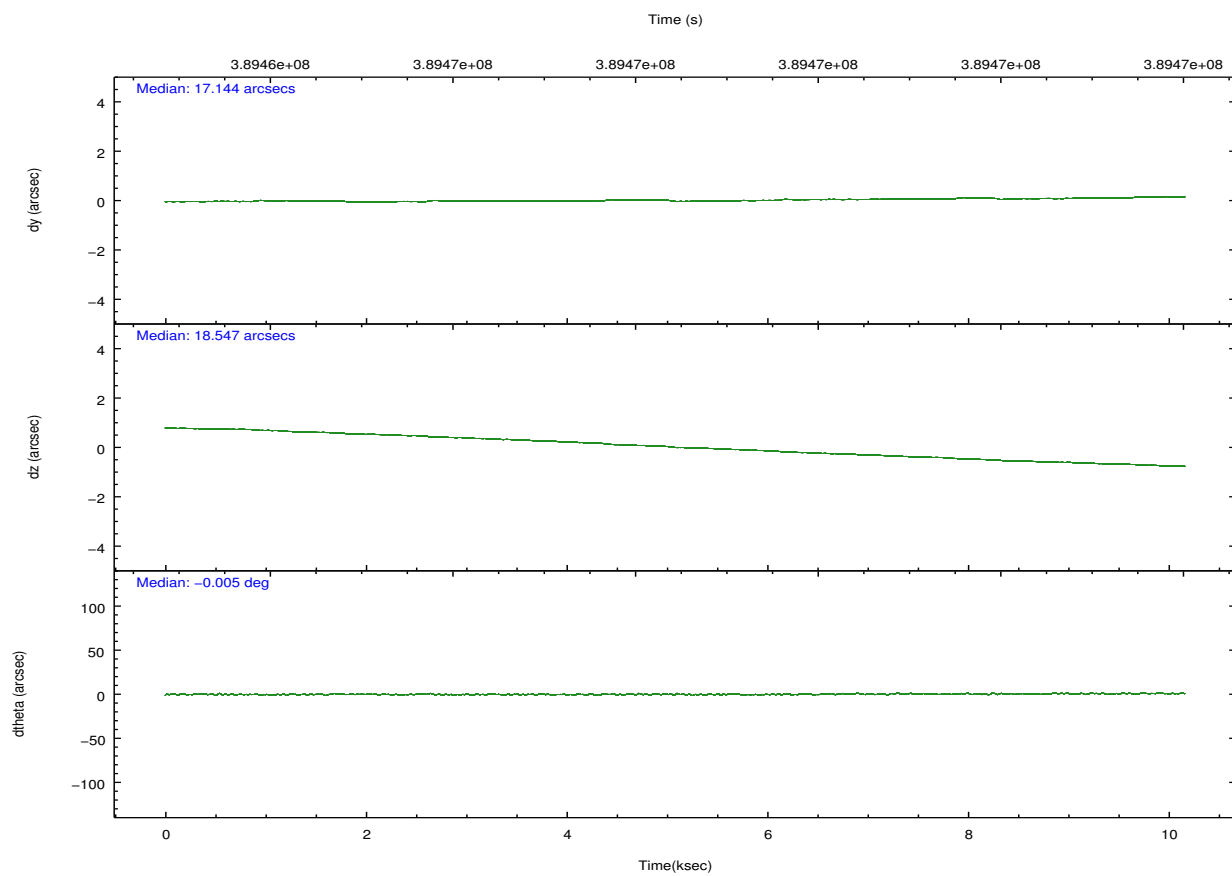
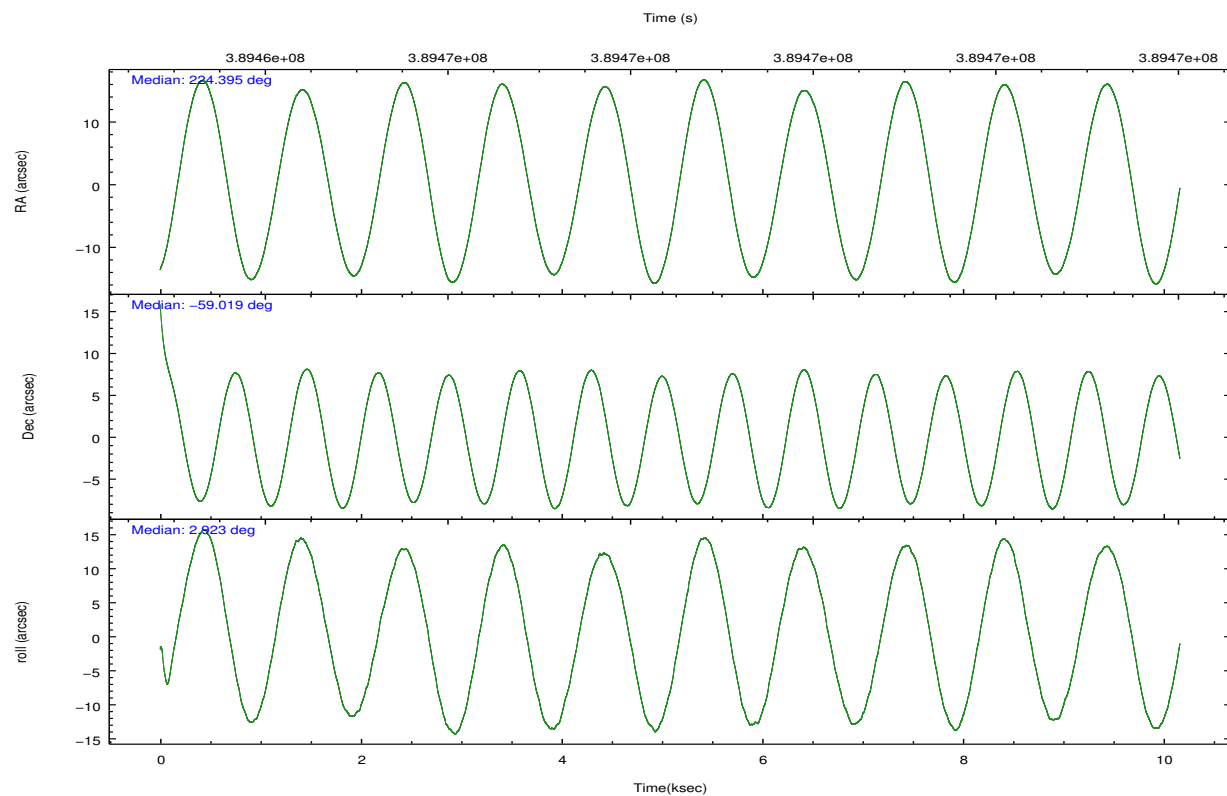
	ccd 2	ccd 3	ccd 5	ccd 6	ccd 7	ccd 8		ccd 2	ccd 3	ccd 5	ccd 6	ccd 7	ccd 8
level 1 events	82219	74247	117325	74329	93228	99473	grade 0 events	3243	2937	7497	3362	3976	8306
rejected events	73712	66344	58837	65355	50995	72571		3%	3%	6%	4%	4%	8%
rejected %	89%	89%	50%	87%	54%	72%	grade 1 events	47	40	230	42	112	91
								0%	0%	0%	0%	0%	0%
							grade 2 events	2008	1757	17119	2003	8653	6258
								2%	2%	14%	2%	9%	6%
							grade 3 events	906	858	2334	910	3848	2962
								1%	1%	1%	1%	4%	2%
							grade 4 events	880	849	2189	904	3802	2861
								1%	1%	1%	1%	4%	2%
							grade 5 events	2994	3382	9028	3355	9675	4899
								3%	4%	7%	4%	10%	4%
							grade 6 events	1562	1605	30041	1904	22457	6831
								1%	2%	25%	2%	24%	6%
							grade 7 events	70579	62819	48887	61849	40705	67265
								85%	84%	41%	83%	43%	67%

## 2.2 Compared Parameters

Parameter	Planned	Actual	Parameter	Planned	Actual
Instrument	ACIS	ACIS	Obspar format version number	7	7
Detector	ACIS-235678	ACIS-235678	Obspar file type	PREDICTED	ACTUAL
Grating	NONE	NONE	Obspar update status	NONE	UPDATED
Data mode	FAINT	FAINT	CCD I0 on	N	N
Observation mode	POINTING	POINTING	CCD I1 on	N	N
[deg] Pointing RA	224.351058	224.395211399091	CCD I2 on	O2	Y
[deg] Pointing Dec	-59.034076	-59.01885753116922	CCD I3 on	O3	Y
[deg] Pointing Roll	2.735946	2.930445605210026	CCD S0 on	N	N
[mm] SIM focus pos	-0.684267	-0.6828225247311905	CCD S1 on	O1	Y
[mm] SIM defocus	0	0.001444936568705701	CCD S2 on	O5	Y
[mm] SIM translation stage pos	-190.132523	-190.1400660498719	CCD S3 on	Y	Y
[mm] SIM translation stage offset	0	0.00754346686406393	CCD S4 on	O4	Y
[s] Observation start time (MET)	389463516.184000	389462396.35805	CCD S5 on	N	N
Observation start date	2010-05-05T16:17:30	2010-05-05T15:59:56	Number of optional ACIS chips dropped	0	0
[s] Observation end time (MET)	389473516.184000	389474721.47117	On-chip summing requested	N	N
Observation end date	2010-05-05T19:04:10	2010-05-05T19:25:21	Subarray requested	NONE	NONE
Read mode	TIMED	TIMED	Alternating exposures requested	N	N
			[s] Primary exposure time	0.000000	3.2

## 2.3 Aspect



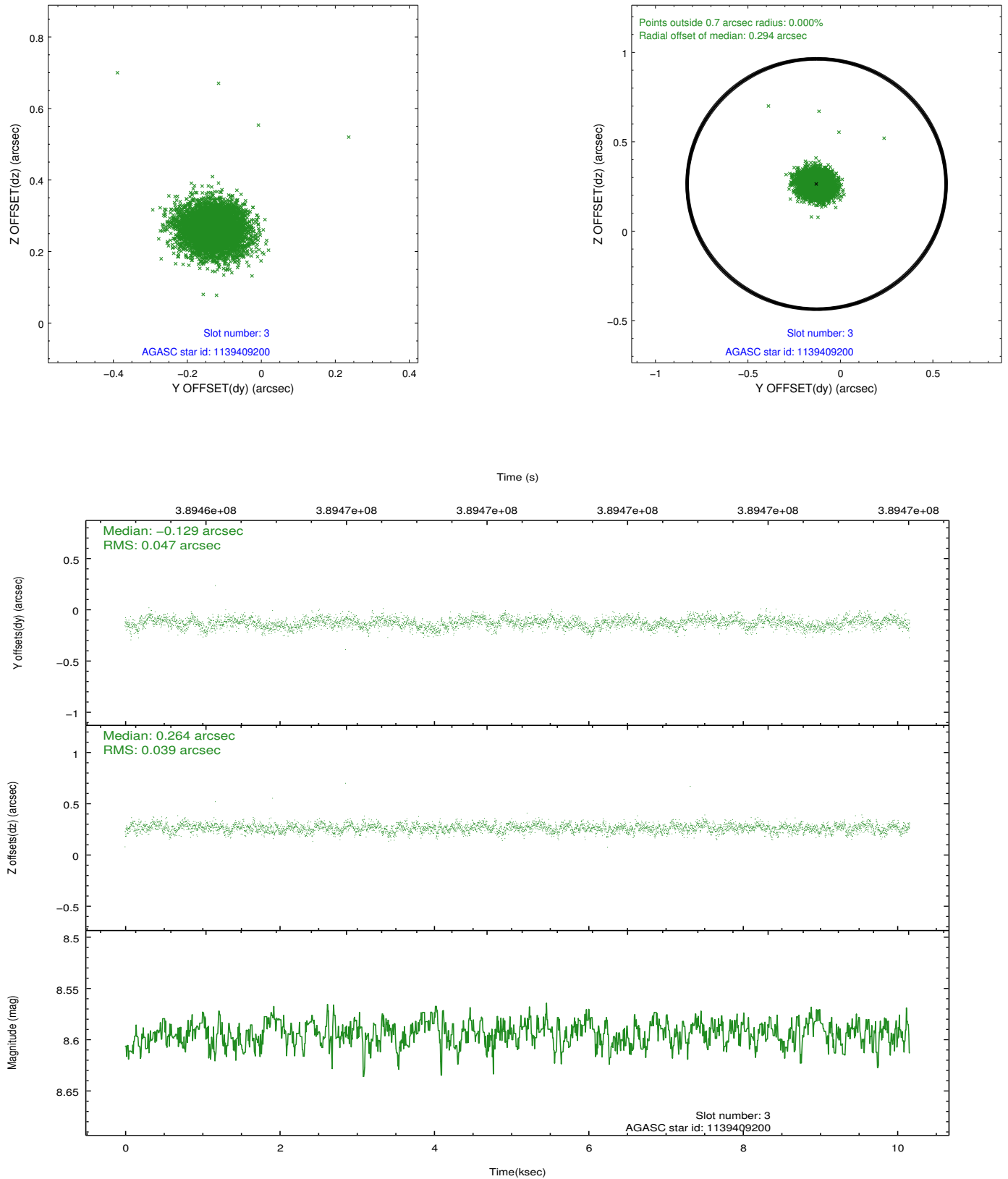


### Slot Statistics

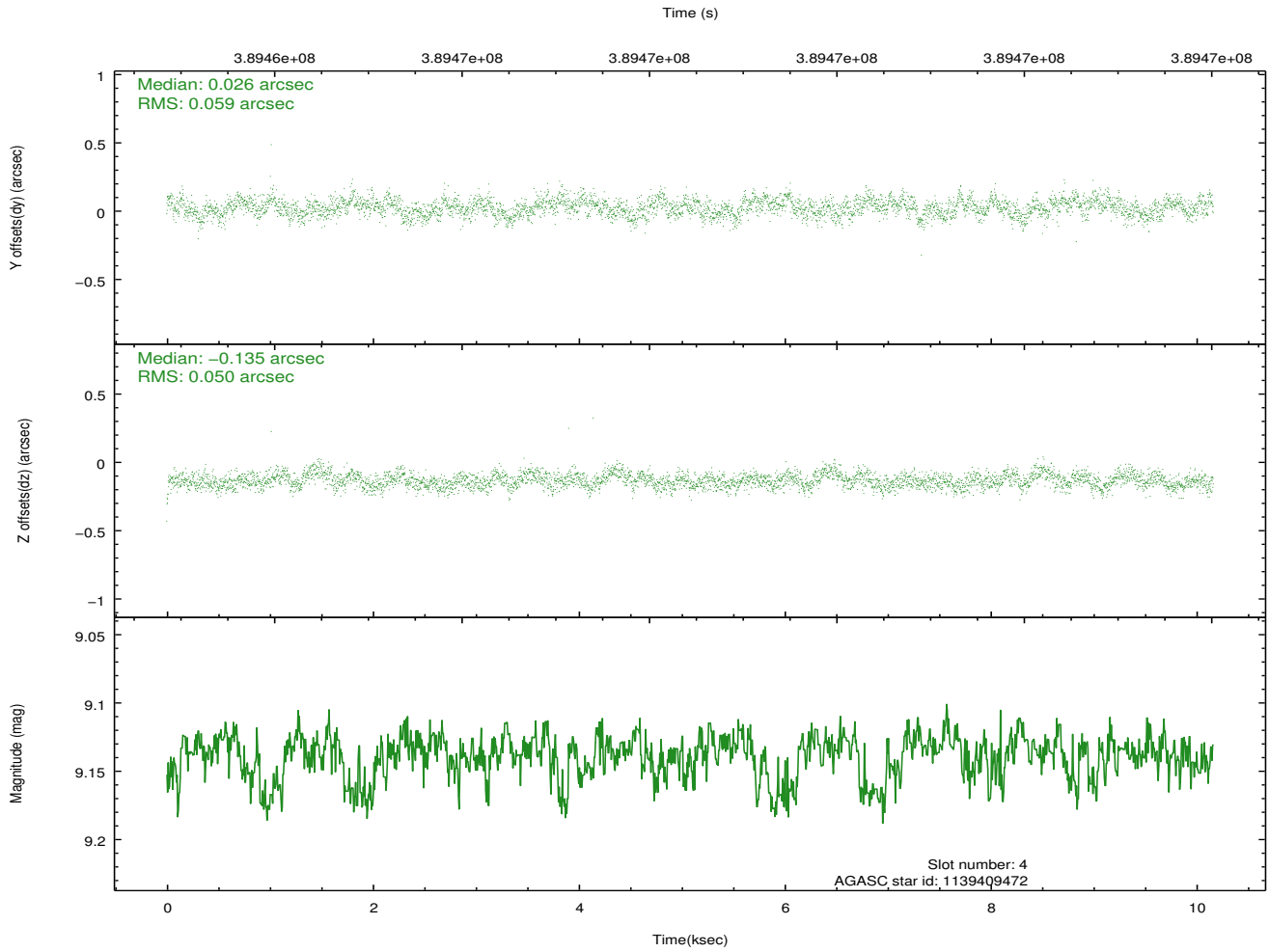
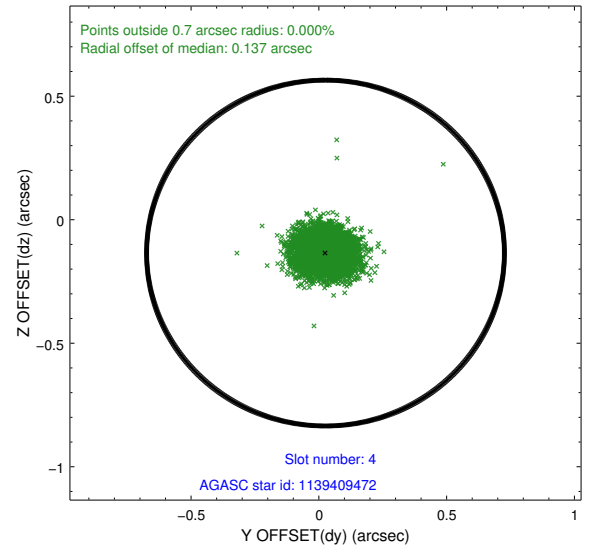
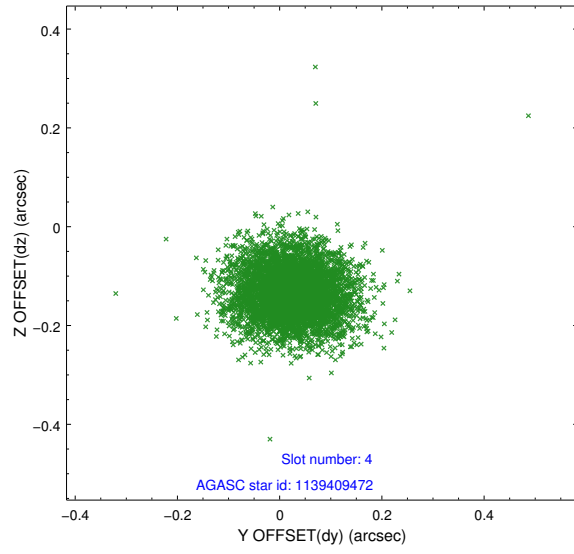
slot	status	id	mag	n_pts	med_dy	med_dz	dr1	dr2	ra	dec	mean_y	mean_z
0	FID	ACIS-S-1	6.95	2479	0.122	0.005	0.014	0.030	0.000000	0.000000	925.96	-1735.67
1	FID	ACIS-S-2	6.88	2479	-0.133	0.004	0.011	0.020	0.000000	0.000000	-769.91	-1740.76
2	FID	ACIS-S-6	7.10	2479	-0.009	-0.003	0.010	0.019	0.000000	0.000000	391.25	805.12
3	GUIDE	1139409200	8.59	4955	-0.129	0.264	0.064	0.104	225.614922	-59.299878	2273.58	-1088.55
4	GUIDE	1139409472	9.14	4955	0.026	-0.135	0.081	0.132	225.394355	-58.966324	1946.00	136.02
5	GUIDE	1139411808	8.78	4957	0.025	0.022	0.080	0.130	223.338281	-58.476338	-1808.54	2081.80
6	GUIDE	1139412584	8.47	4955	0.066	-0.194	0.083	0.129	224.173476	-58.432464	-231.21	2178.84
7	GUIDE	1139412752	8.89	4930	0.011	0.038	0.082	0.134	224.702261	-58.484539	754.58	1943.17

## 2.4 Star Slots

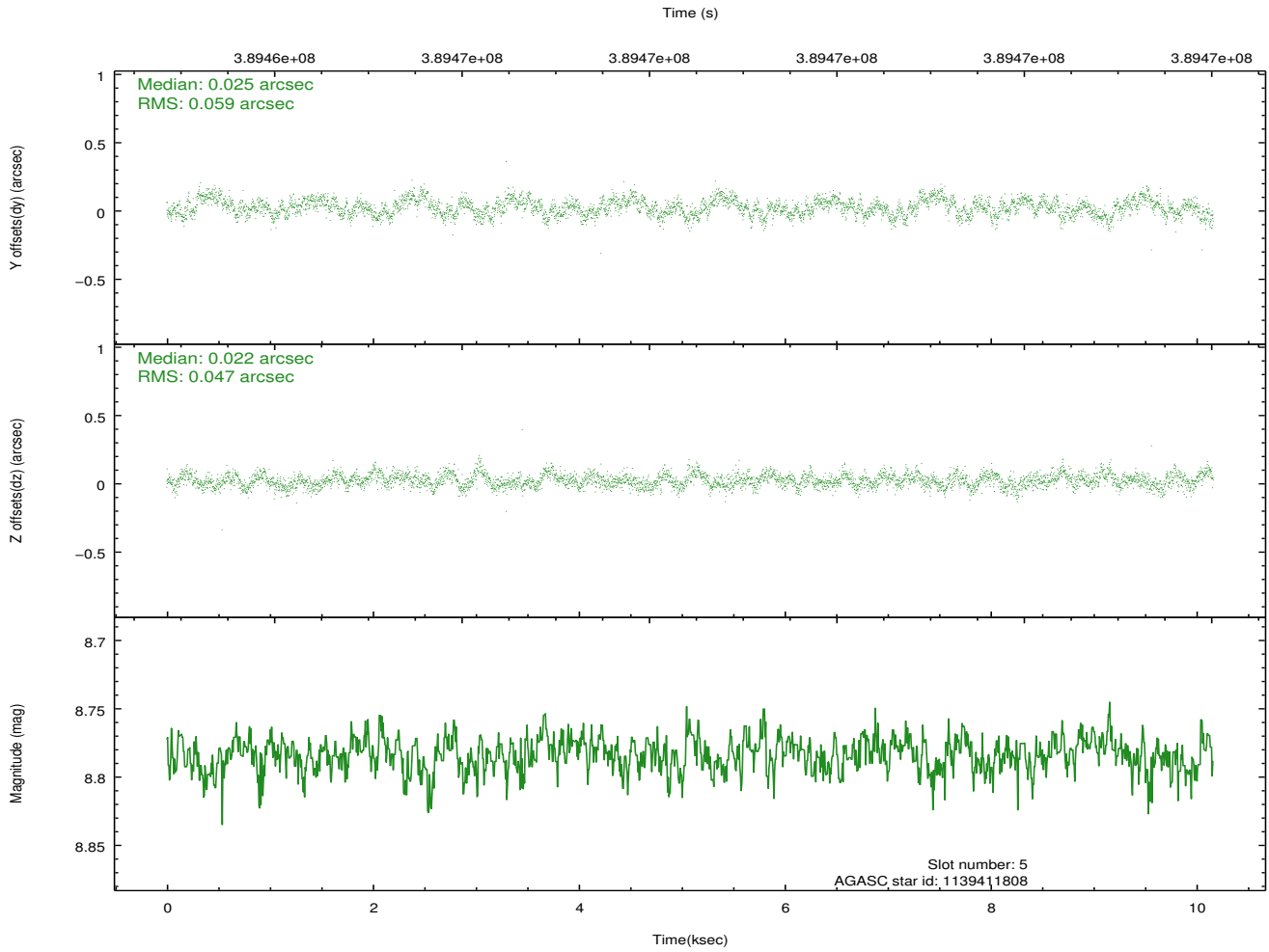
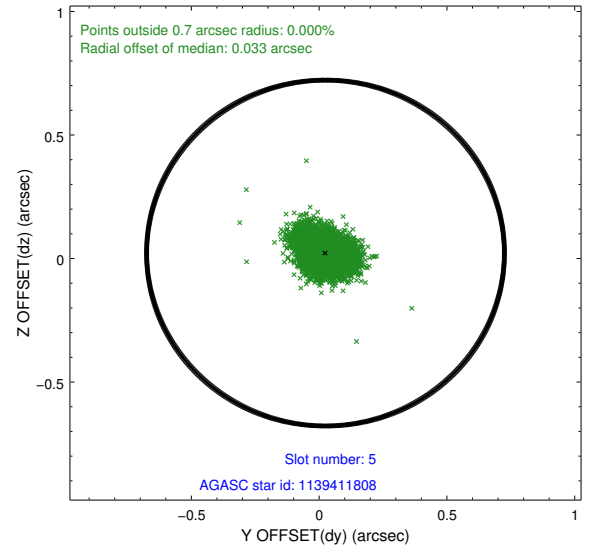
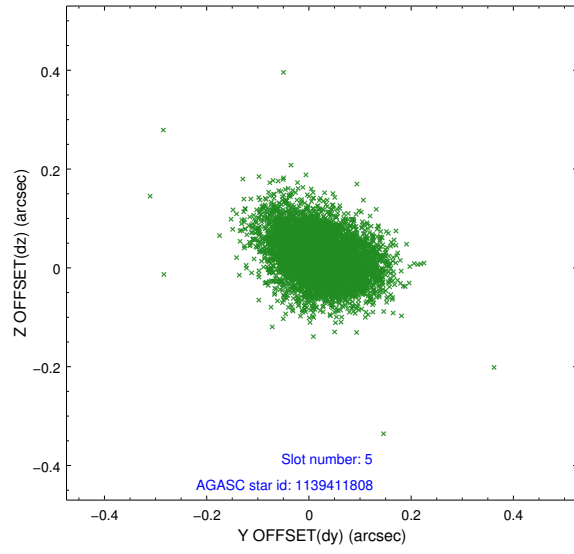
### 2.4.1 Slot 3



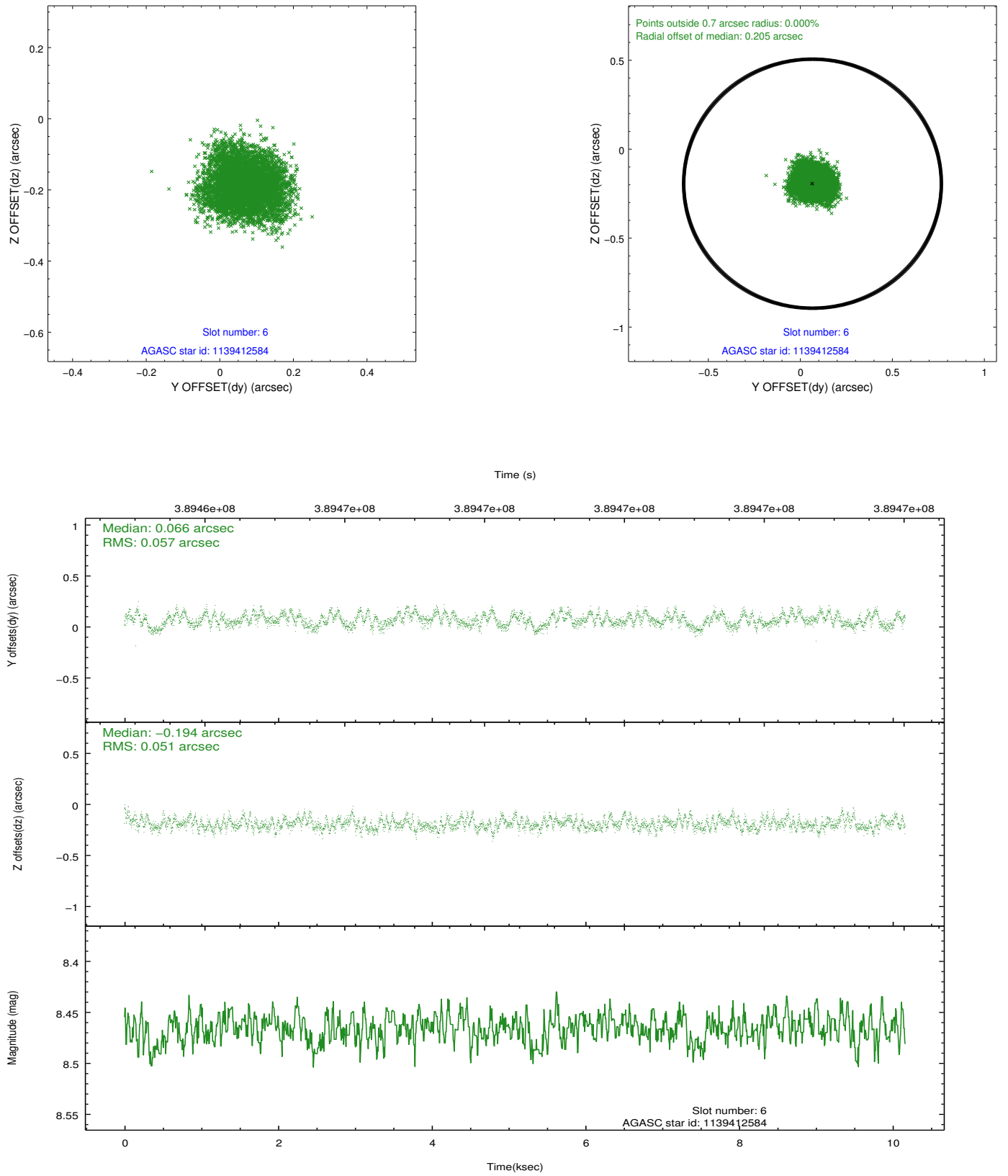
## 2.4.2 Slot 4



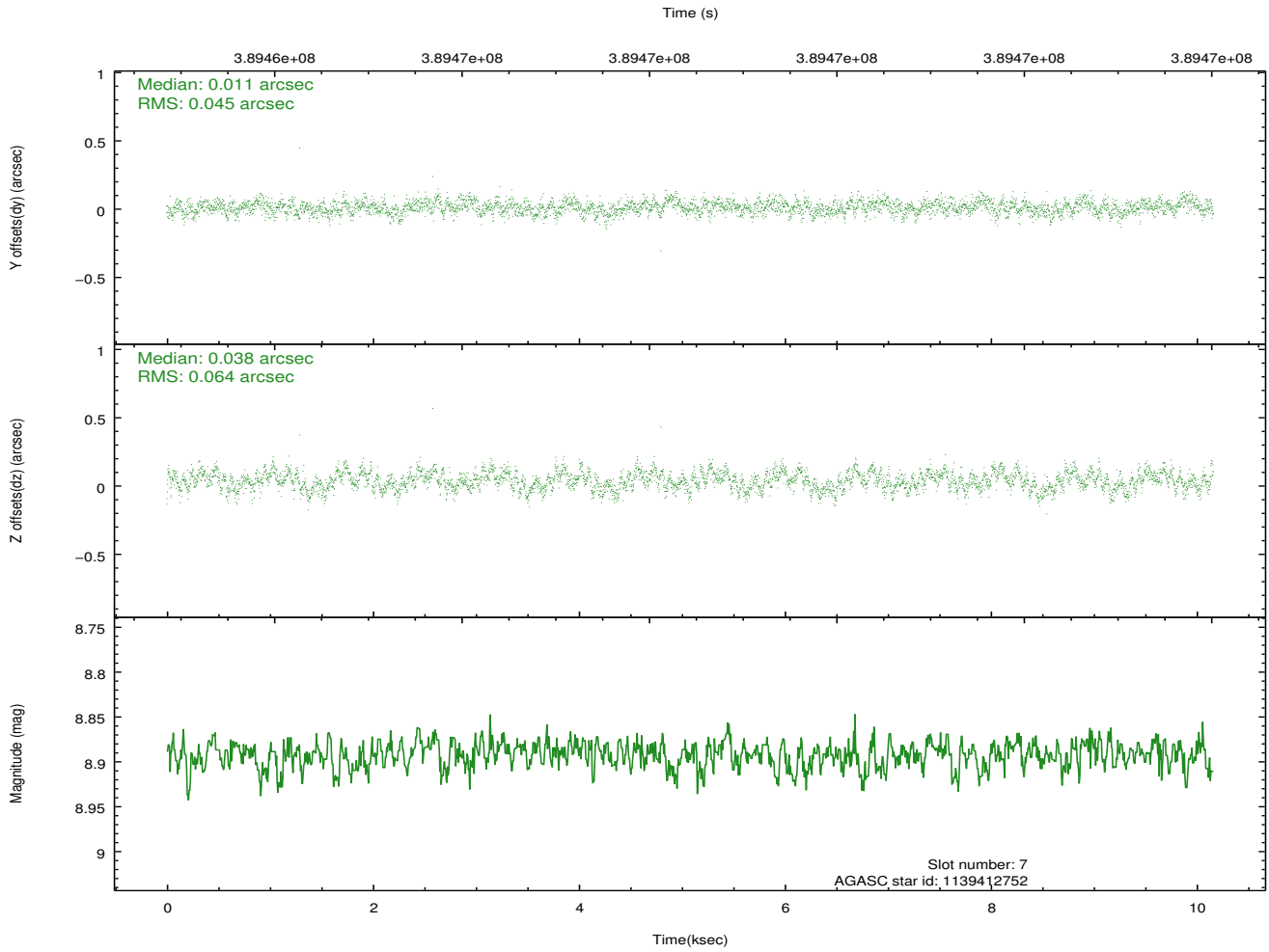
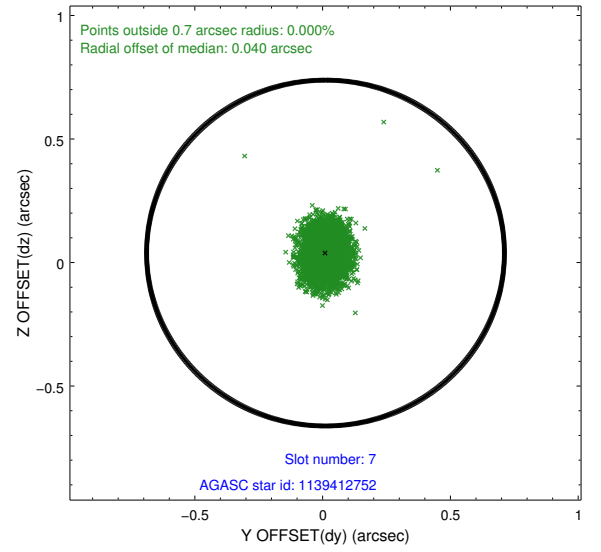
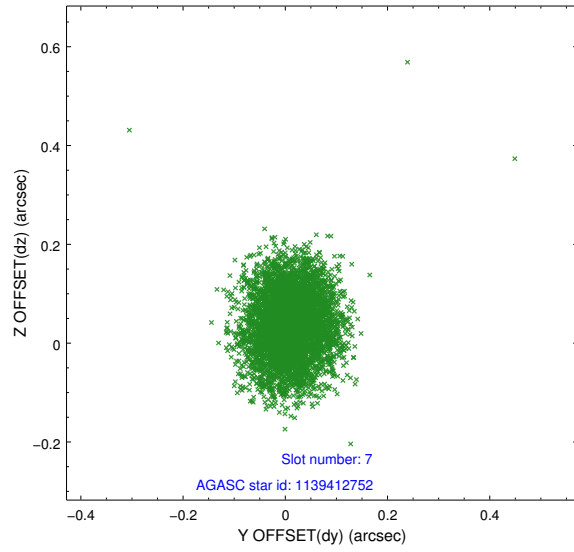
### 2.4.3 Slot 5



## 2.4.4 Slot 6

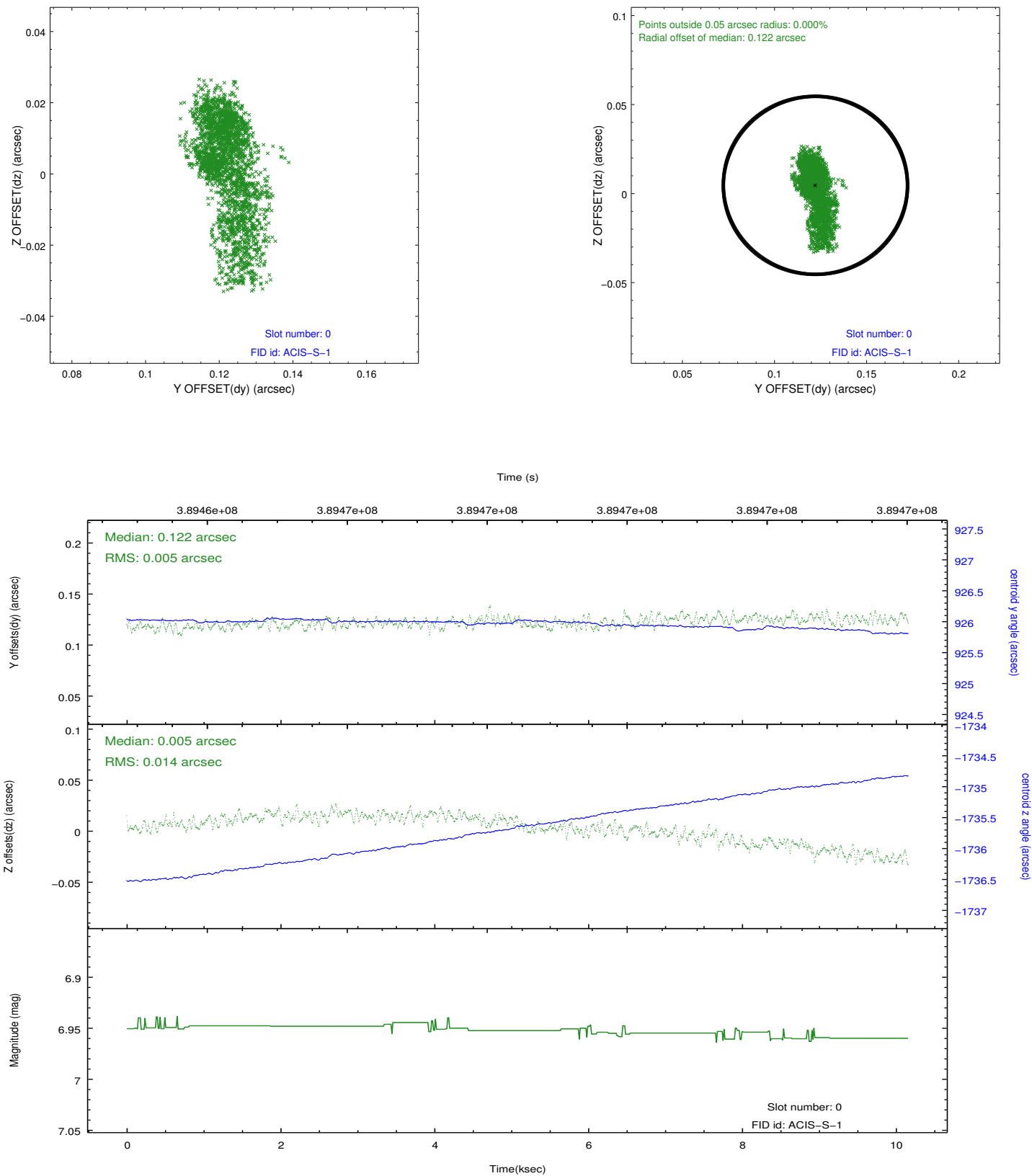


## 2.4.5 Slot 7

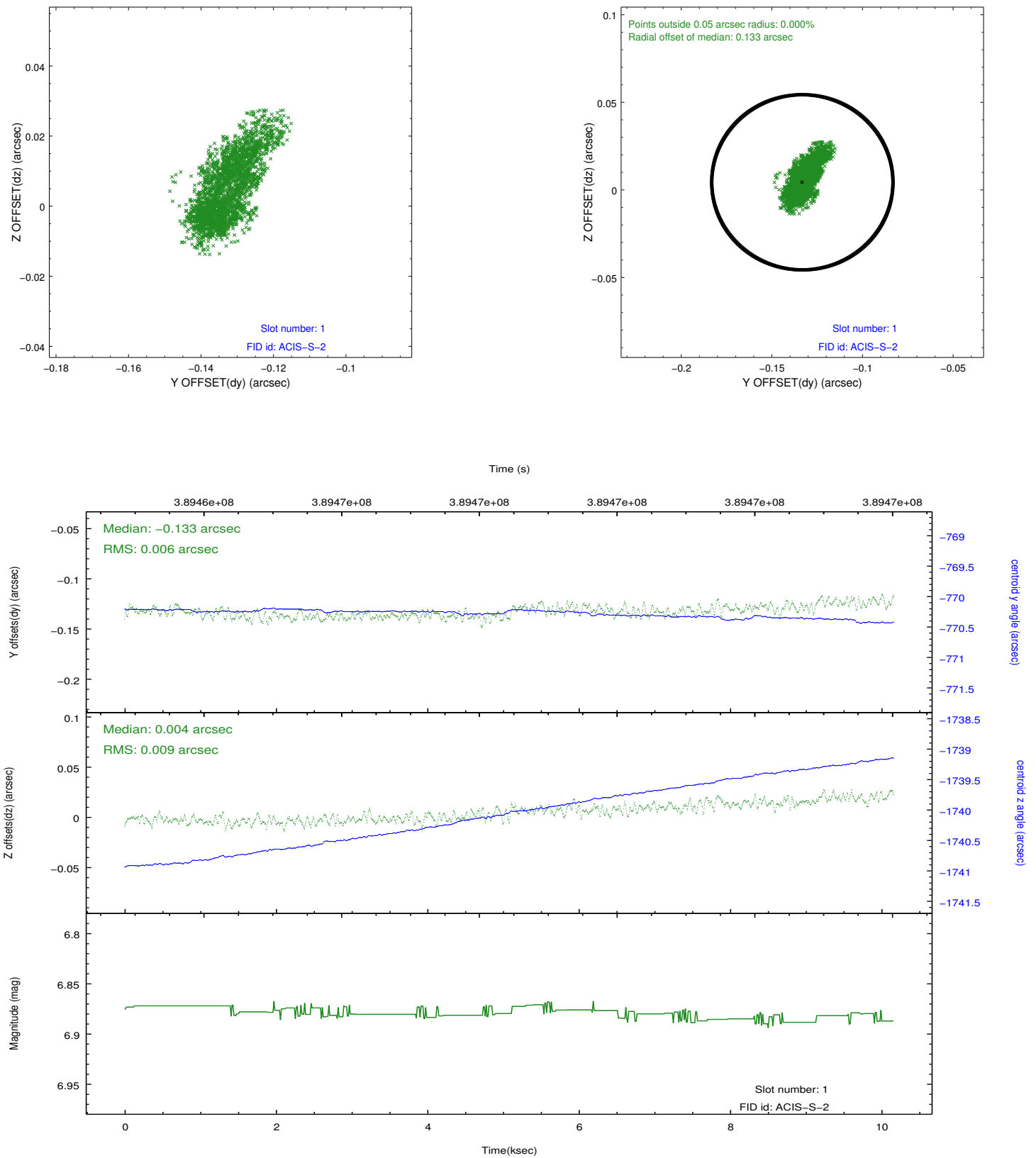


## 2.5 FID Slots

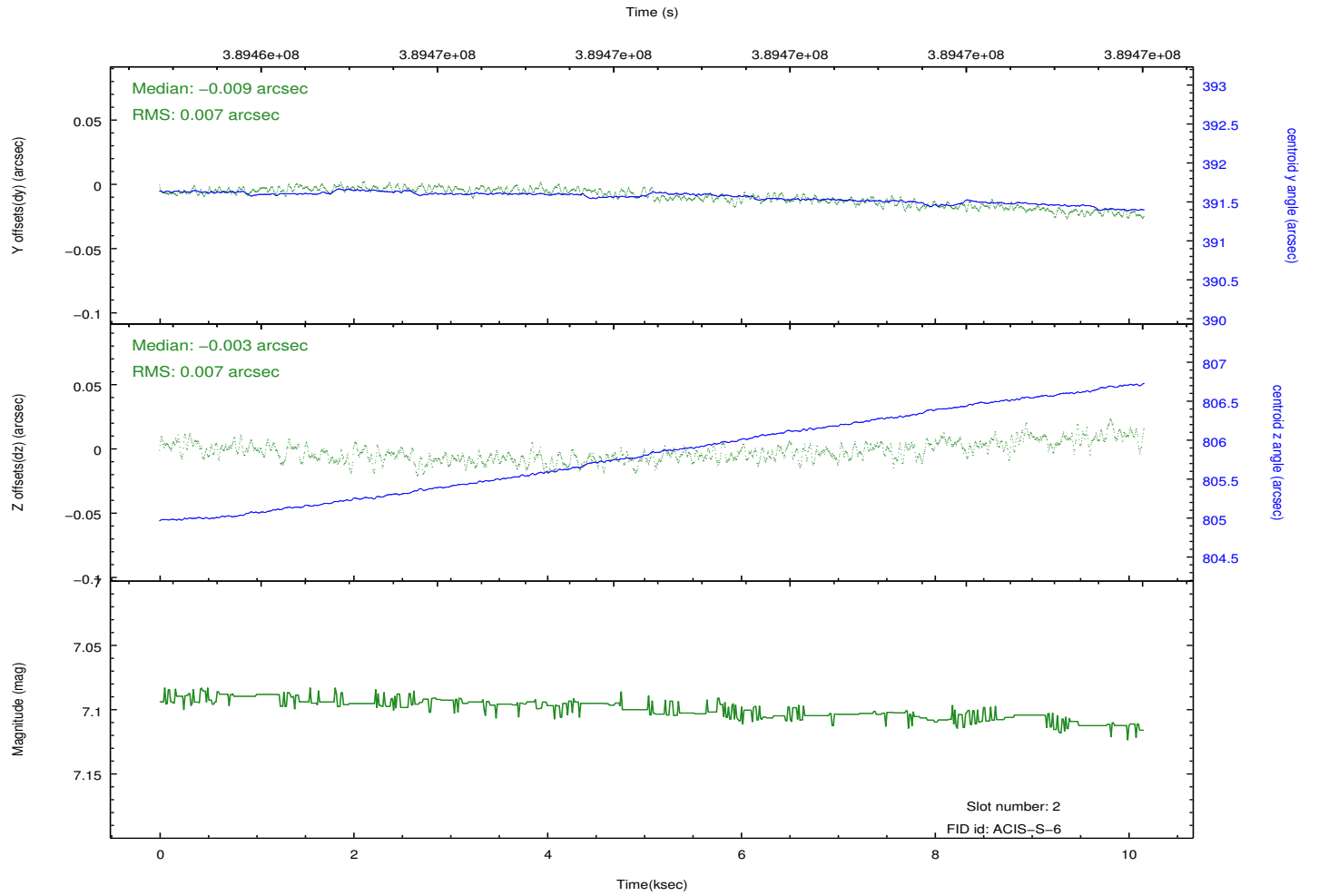
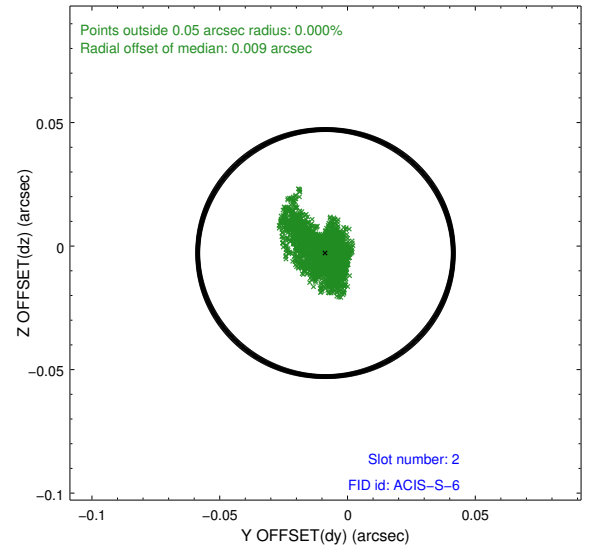
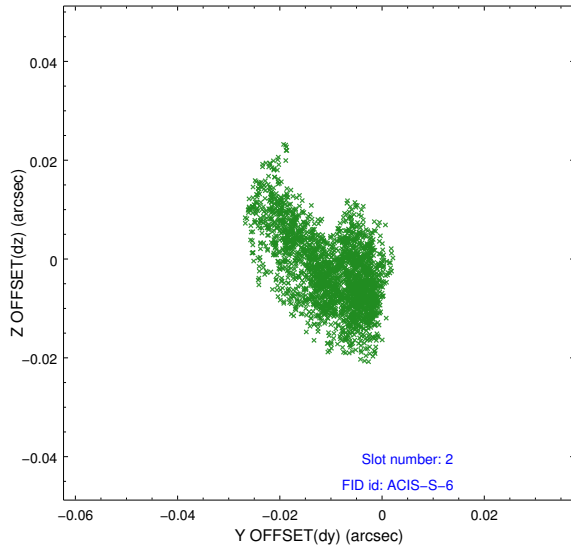
### 2.5.1 Slot 0



## 2.5.2 Slot 1



### 2.5.3 Slot 2



## A Summary

### A.1 Status

V&V Scientist	Jen Lauer
V&V Date (YYYY-MM-DD)	2012.07.02
V&V Edition	1
V&V Disposition and Status	OK
V&V Charge Time	10.156799962223

### A.2 Comments