

# V&V Reference Report

## L2 ASCDS Version : 8.4.5

Observation 11790 - L2 Version 2  
Chandra X-Ray Center

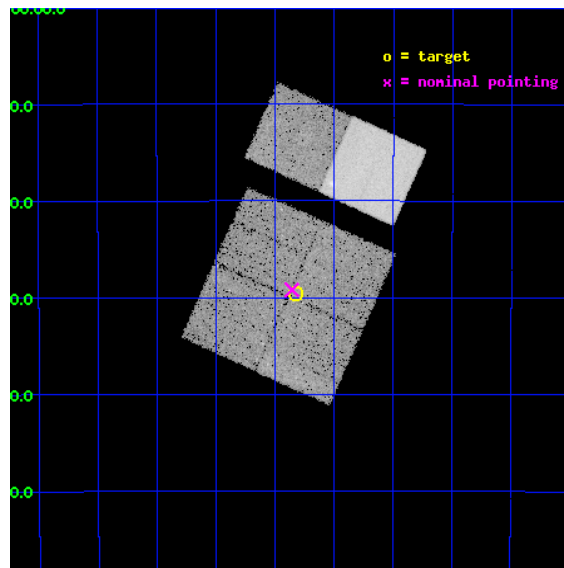
L2 Processing Date : Jun 23 2012

## Contents

<b>1</b>	<b>Front</b>	<b>2</b>
<b>2</b>	<b>OBI</b>	<b>3</b>
2.1	OBI . . . . .	3
2.1.1	Images . . . . .	3
2.1.2	Bias . . . . .	3
2.1.3	Parameters . . . . .	4
2.1.4	Events . . . . .	4
2.2	Compared Parameters . . . . .	5
2.3	Aspect . . . . .	6
2.4	Star Slots . . . . .	9
2.4.1	Slot 3 . . . . .	9
2.4.2	Slot 4 . . . . .	10
2.4.3	Slot 5 . . . . .	11
2.4.4	Slot 6 . . . . .	12
2.4.5	Slot 7 . . . . .	13
2.5	FID Slots . . . . .	14
2.5.1	Slot 0 . . . . .	14
2.5.2	Slot 1 . . . . .	15
2.5.3	Slot 2 . . . . .	16
<b>A</b>	<b>Summary</b>	<b>17</b>
A.1	Status . . . . .	17
A.2	Comments . . . . .	17

# 1 Front

seq_num	900925	Sequence number
obs_id	11790	Observation id
title	Identifying Unidentified Fermi-LAT Objects (UFOs) at High-Latitude	&#160
observer	Dr. C.C. Teddy Cheung	Principal investigator
object	J1311.9-3419	Source name
dtcycle	0	&#160
cycle	P	events from which exps? Prim/Second/Both
ra_targ	197.957	Observer's specified target RA [deg]
dec_targ	-34.492	Observer's specified target Dec [deg]
ra_nom	197.9643413412	Nominal RA [deg]
dec_nom	-34.486609737223	Nominal Dec [deg]
roll_nom	24.21284649982	Nominal Roll [deg]
revision	2	Processing version of data
ontime	20118.399925113	Sum of GTIs [s]
livetime	19863.648631415	Livetime [s]
ontime0	20118.399925113	Sum of GTIs [s]
ontime1	20118.399925113	Sum of GTIs [s]
ontime2	20118.399925113	Sum of GTIs [s]
ontime3	20118.399925113	Sum of GTIs [s]
ontime6	20118.399925113	Sum of GTIs [s]
ontime7	20118.399925113	Sum of GTIs [s]
l2events	157759	Number of level 2 events

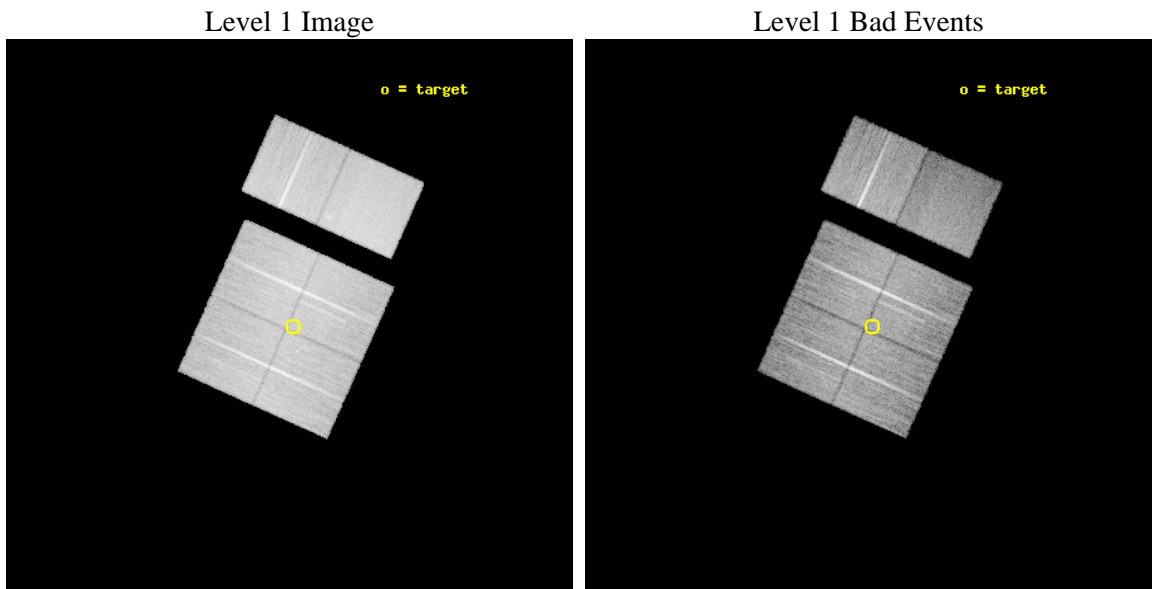




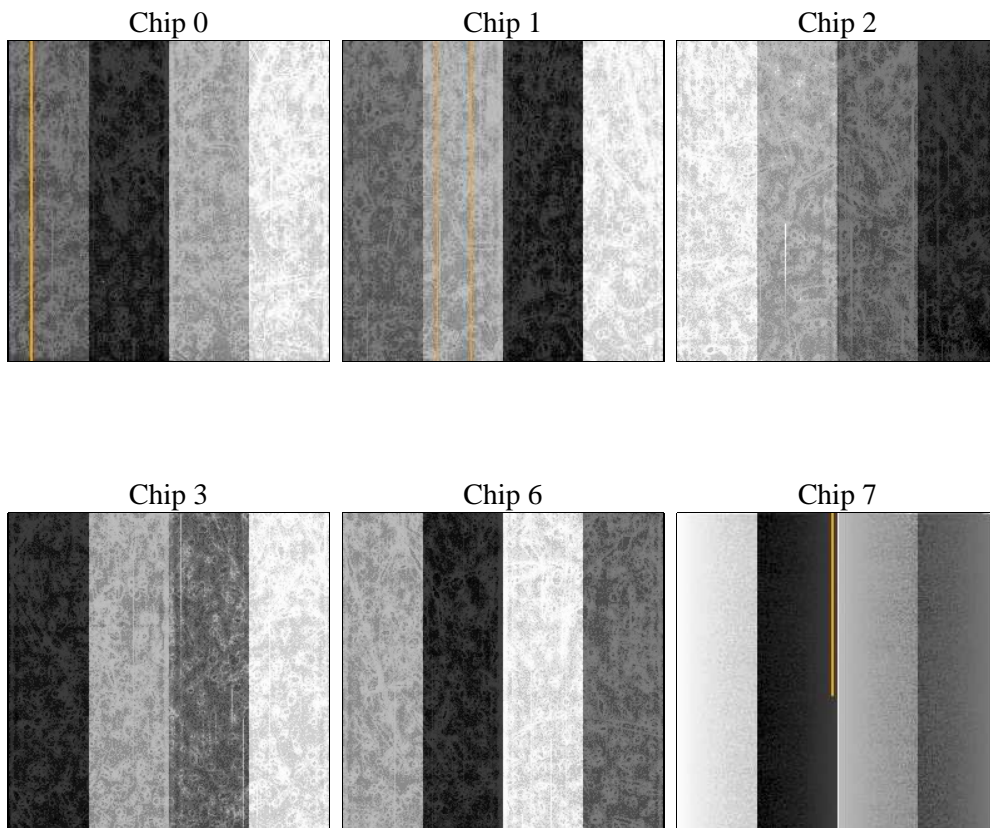
## 2 OBI

### 2.1 OBI

#### 2.1.1 Images



#### 2.1.2 Bias



### 2.1.3 Parameters

obi_num	0	Obi number	sched_exp_time	20000.000000	[s] Scheduled observation exposure time
ascdsver	8.4.5	Processing system revision	ontime	20118.399925113	Sum of GTIs [s]
caldsver	4.4.10	&#160	ontime0	20118.399925113	Sum of GTIs [s]
date	2012-06-23T04:51:27	Date and time of file creation	ontime1	20118.399925113	Sum of GTIs [s]
revision	2	Processing version of data	ontime2	20118.399925113	Sum of GTIs [s]
			ontime3	20118.399925113	Sum of GTIs [s]
			ontime6	20118.399925113	Sum of GTIs [s]
			ontime7	20118.399925113	Sum of GTIs [s]
			l1events	990953	Number of level 1 events

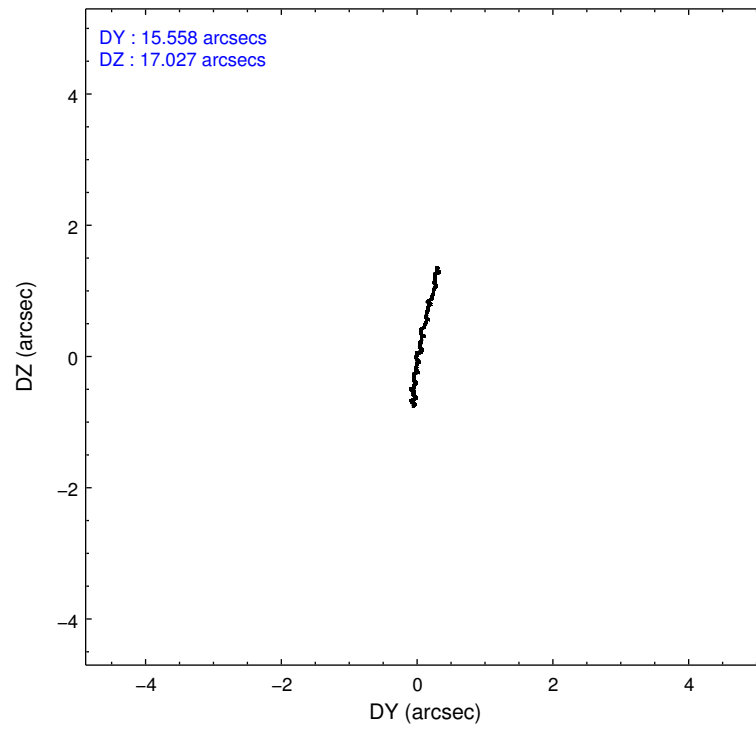
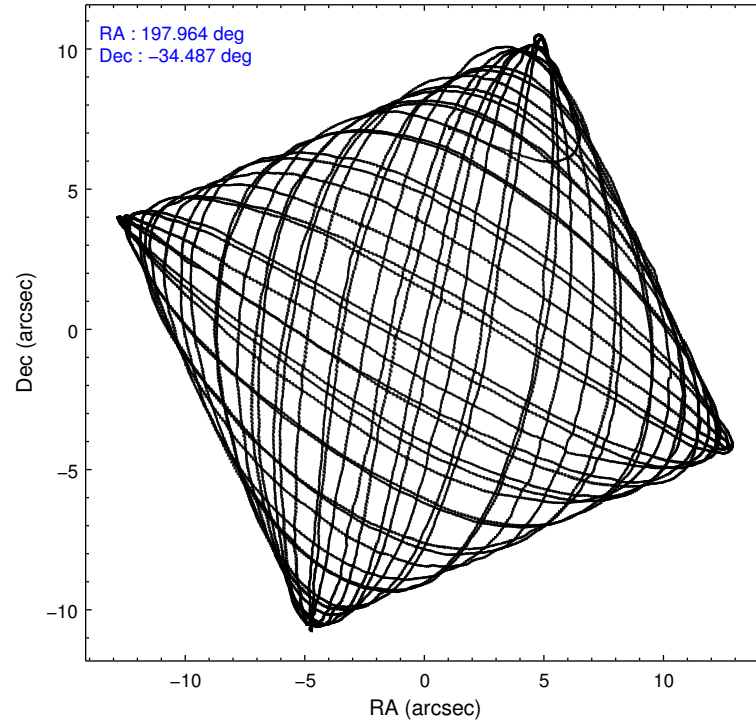
### 2.1.4 Events

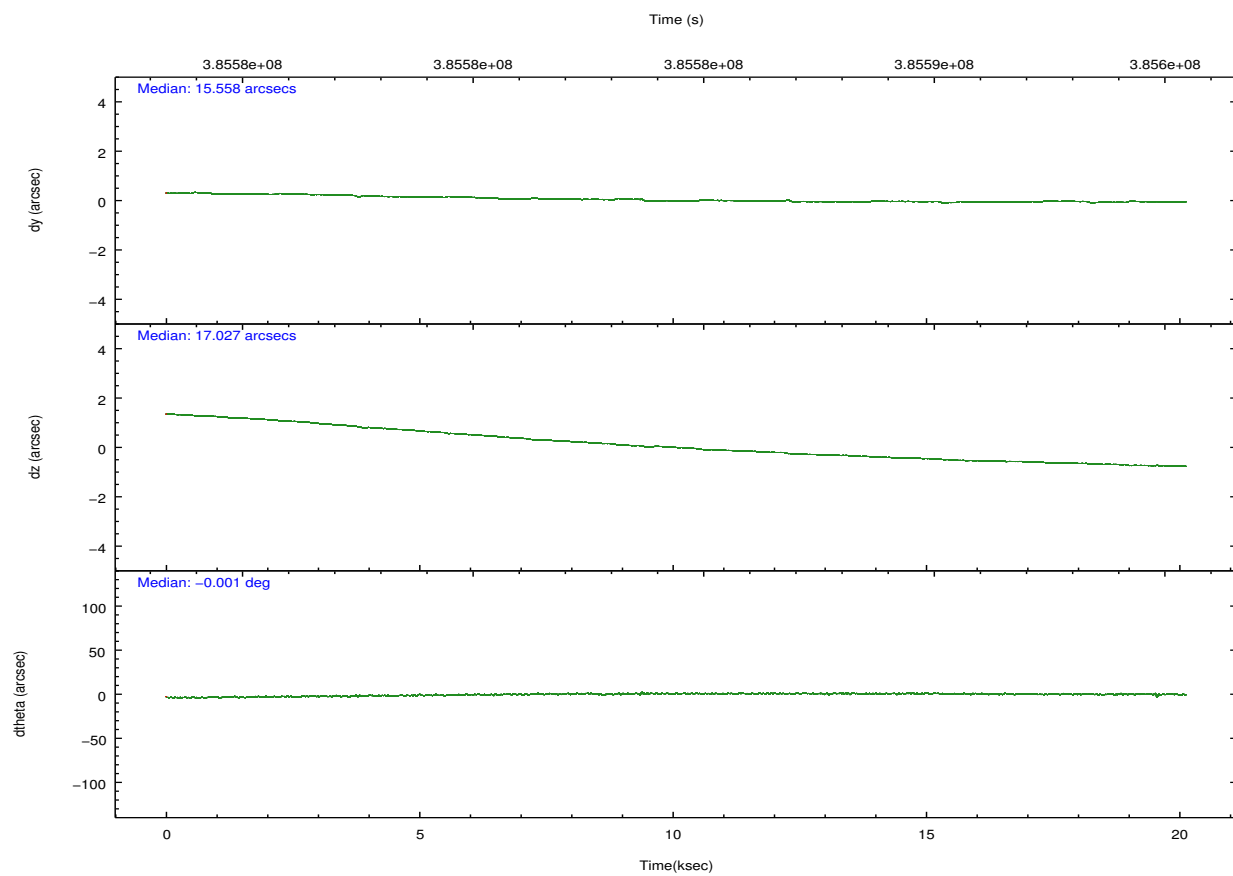
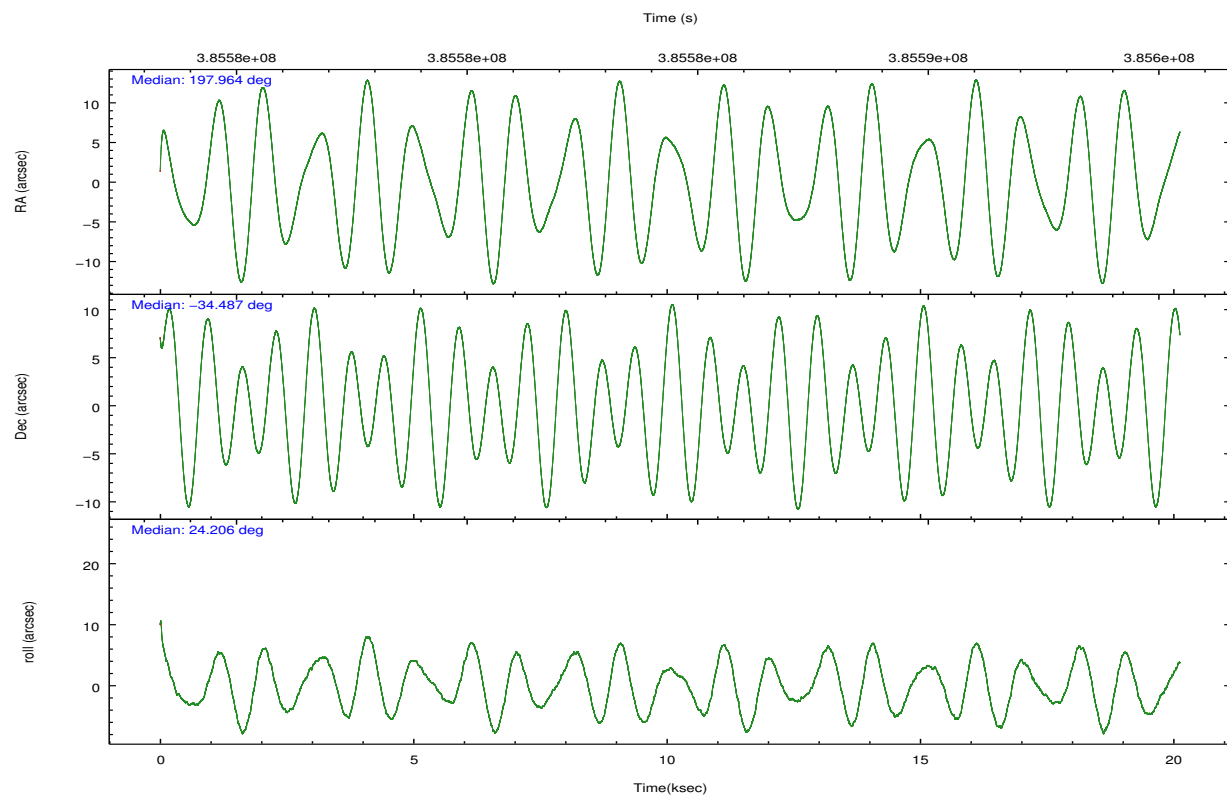
	ccd 0	ccd 1	ccd 2	ccd 3	ccd 6	ccd 7		ccd 0	ccd 1	ccd 2	ccd 3	ccd 6	ccd 7
level 1 events	147529	155398	165808	158276	168791	195151	grade 0 events	6487	7292	6268	5810	6789	8595
rejected events	130139	136299	149103	142374	150454	108130		4%	4%	3%	3%	4%	4%
rejected %	88%	87%	89%	89%	89%	55%	grade 1 events	104	87	108	78	80	248
								0%	0%	0%	0%	0%	0%
							grade 2 events	4280	4368	4225	3537	4257	18404
								2%	2%	2%	2%	2%	9%
							grade 3 events	1926	2113	1689	1773	1940	7961
								1%	1%	1%	1%	1%	4%
							grade 4 events	1834	1953	1766	1812	1828	7947
								1%	1%	1%	1%	1%	4%
							grade 5 events	6375	6904	6135	7042	7215	20105
								4%	4%	3%	4%	4%	10%
							grade 6 events	3384	3913	3211	3390	4059	46528
								2%	2%	1%	2%	2%	23%
							grade 7 events	123139	128768	142406	134834	142623	85363
								83%	82%	85%	85%	84%	43%

## 2.2 Compared Parameters

Parameter	Planned	Actual	Parameter	Planned	Actual
Instrument	ACIS	ACIS	Obspar format version number	7	7
Detector	ACIS-012367	ACIS-012367	Obspar file type	PREDICTED	ACTUAL
Grating	NONE	NONE	Obspar update status	NONE	UPDATED
Data mode	FAINT	FAINT	CCD I0 on	Y	Y
Observation mode	POINTING	POINTING	CCD I1 on	Y	Y
[deg] Pointing RA	197.944935	197.964341341199	CCD I2 on	Y	Y
[deg] Pointing Dec	-34.509018	-34.48660973722331	CCD I3 on	Y	Y
[deg] Pointing Roll	23.993162	24.21284649982038	CCD S0 on	N	N
[mm] SIM focus pos	-0.782348	-0.7809083437167272	CCD S1 on	N	N
[mm] SIM defocus	0	0.001439871863259334	CCD S2 on	O2	Y
[mm] SIM translation stage pos	-233.592463	-233.5874344608287	CCD S3 on	O1	Y
[mm] SIM translation stage offset	0	-0.005018542100998502	CCD S4 on	N	N
[s] Observation start time (MET)	385574456.184000	385573136.16039	CCD S5 on	N	N
Observation start date	2010-03-21T15:59:50	2010-03-21T15:38:56	Number of optional ACIS chips dropped	0	0
[s] Observation end time (MET)	385594456.184000	385595296.66152	On-chip summing requested	N	N
Observation end date	2010-03-21T21:33:10	2010-03-21T21:48:16	Subarray requested	NONE	NONE
Read mode	TIMED	TIMED	Alternating exposures requested	N	N
			[s] Primary exposure time	0.000000	3.2

## 2.3 Aspect



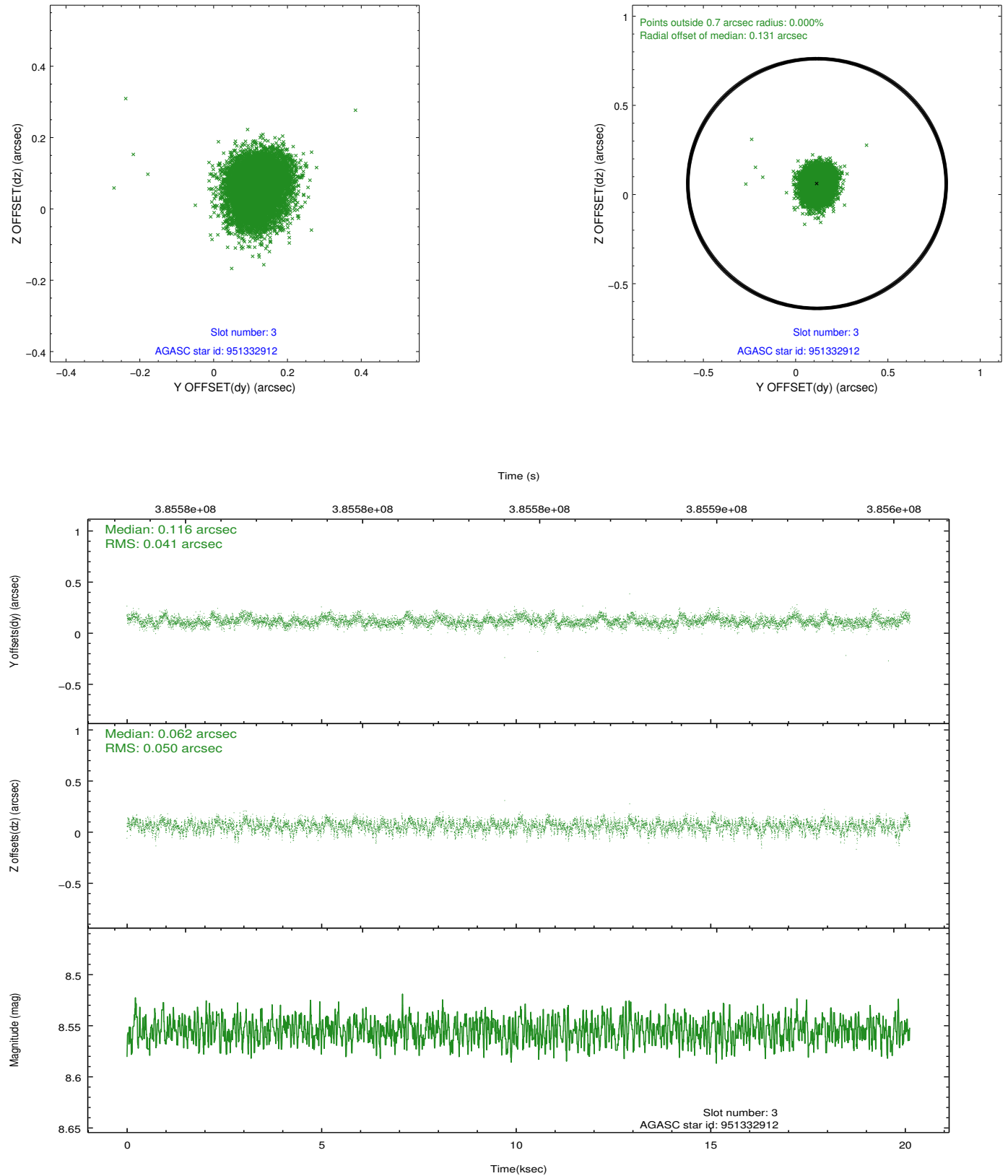


### Slot Statistics

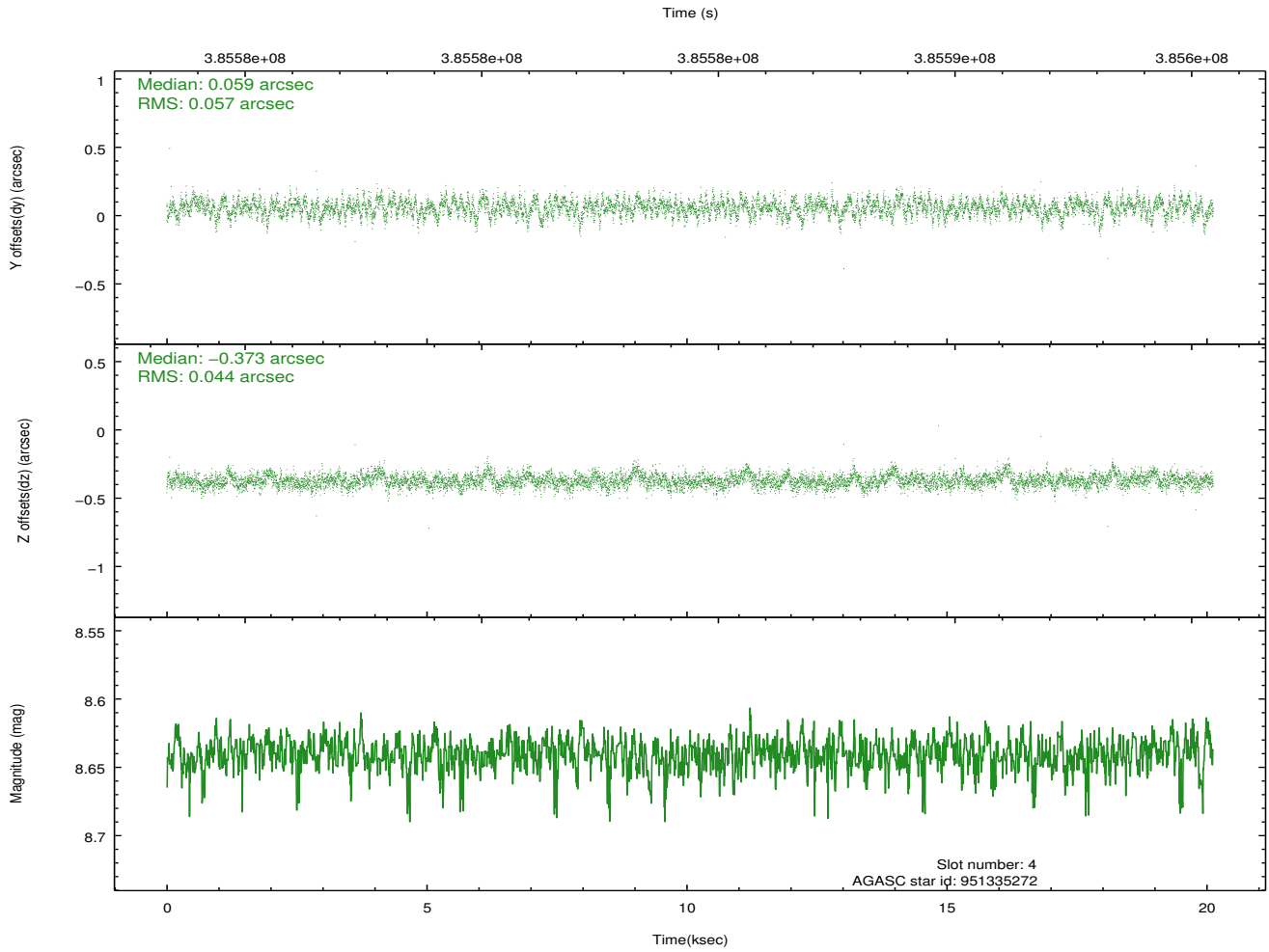
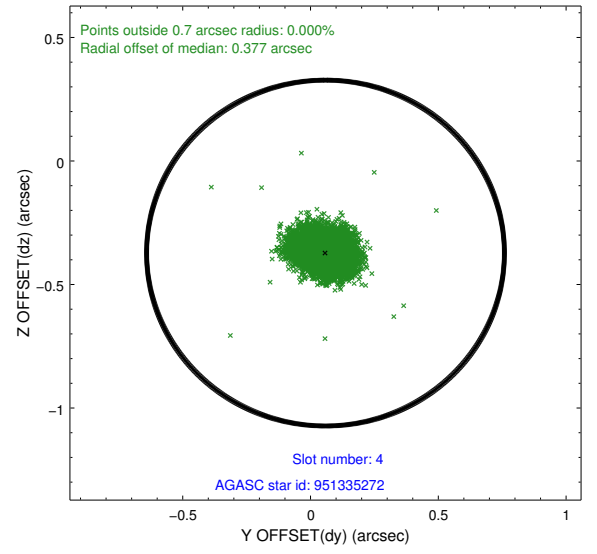
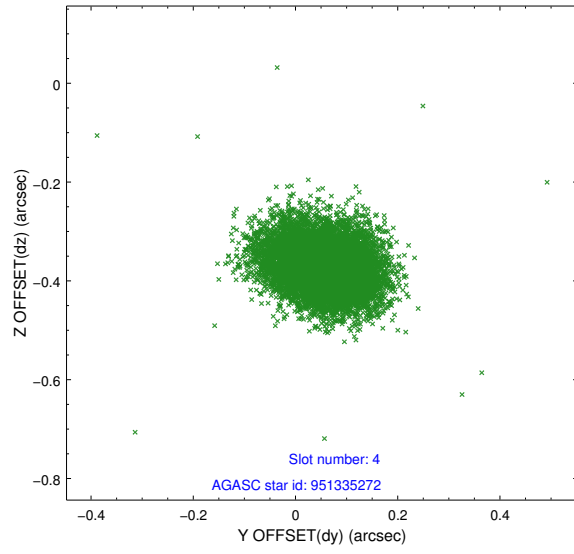
slot	status	id	mag	n_pts	med_dy	med_dz	dr1	dr2	ra	dec	mean_y	mean_z
0	FID	ACIS-I-1	7.02	4909	0.060	-0.025	0.021	0.046	0.000000	0.000000	923.87	-840.83
1	FID	ACIS-I-5	7.01	4909	-0.218	0.061	0.008	0.016	0.000000	0.000000	-1824.39	1056.68
2	FID	ACIS-I-6	7.03	4909	0.068	0.030	0.022	0.031	0.000000	0.000000	389.25	1701.34
3	GUIDE	951332912	8.55	9813	0.116	0.062	0.069	0.112	197.665930	-35.054785	-1552.64	-1464.22
4	GUIDE	951335272	8.64	9816	0.059	-0.373	0.075	0.125	197.097254	-34.118801	-1741.79	2300.54
5	GUIDE	953033968	7.83	9817	0.063	0.047	0.063	0.101	198.455394	-34.674263	1137.57	-1160.98
6	GUIDE	951334464	8.09	9816	0.032	0.218	0.061	0.096	197.515193	-35.311319	-2328.49	-2128.00
7	GUIDE	953032496	8.68	9814	-0.270	0.050	0.090	0.140	198.545031	-34.685379	1362.57	-1307.12

## 2.4 Star Slots

### 2.4.1 Slot 3

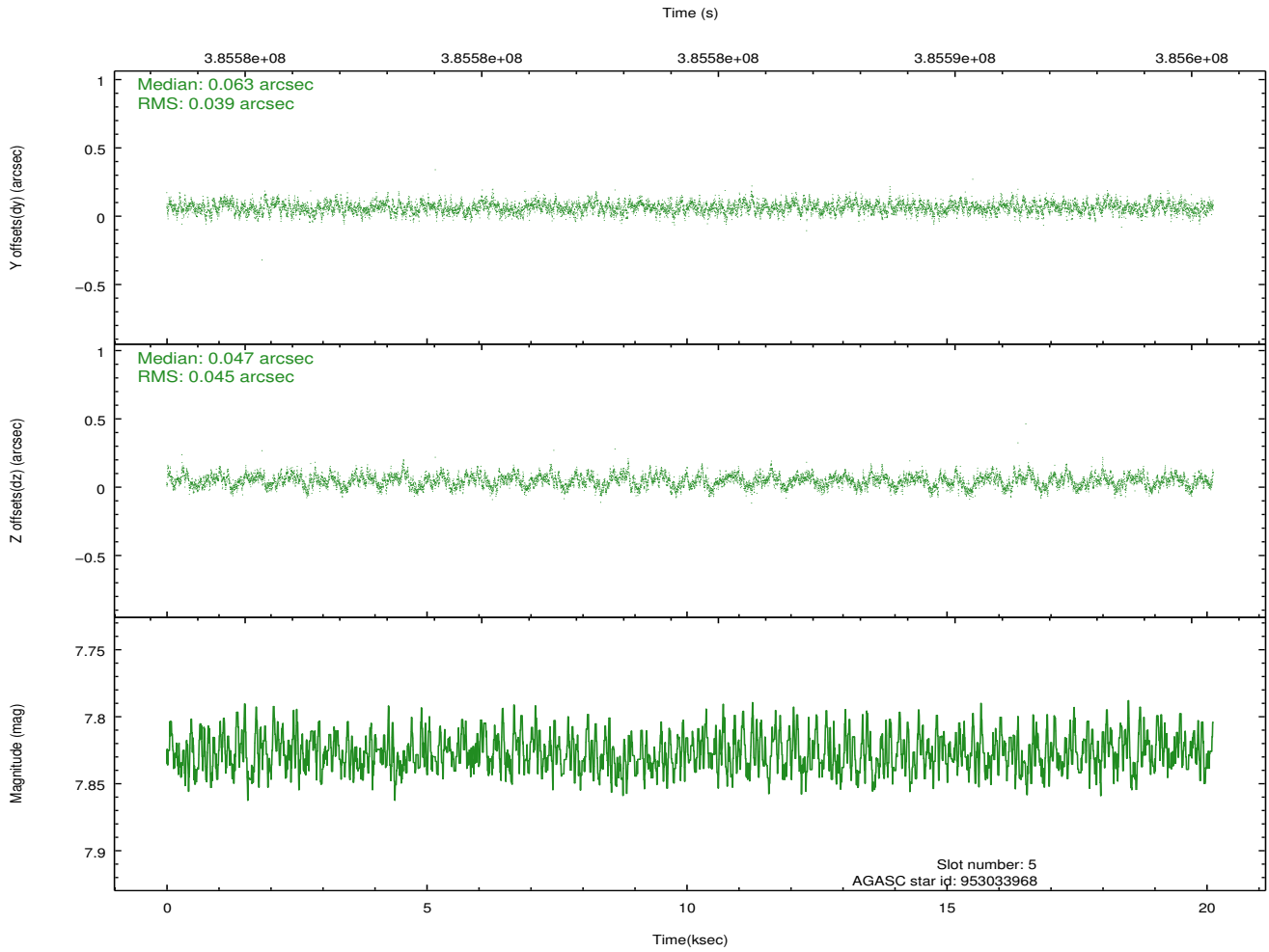
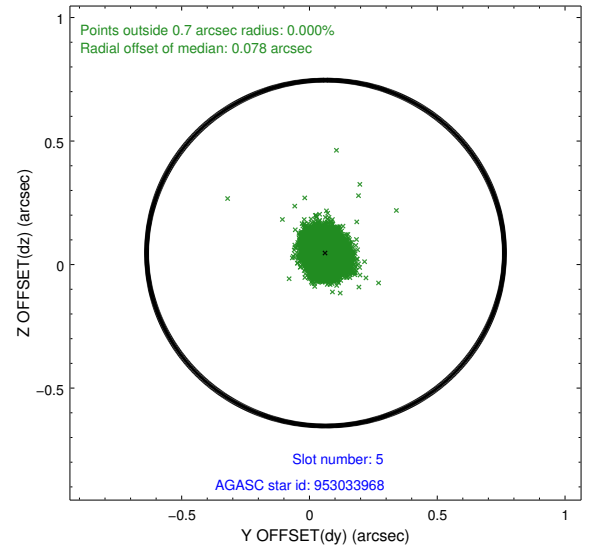
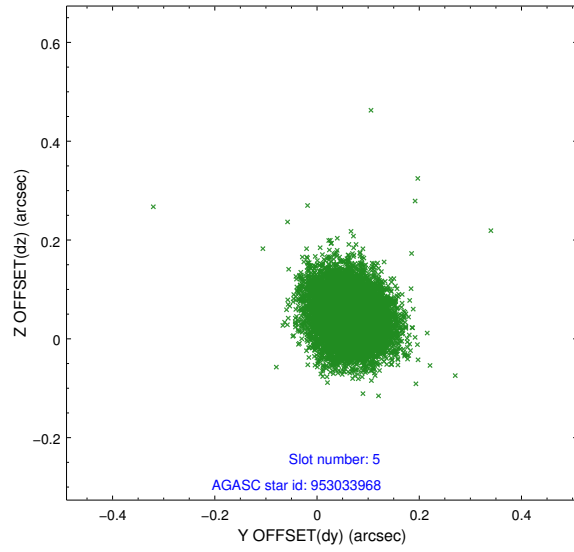


## 2.4.2 Slot 4

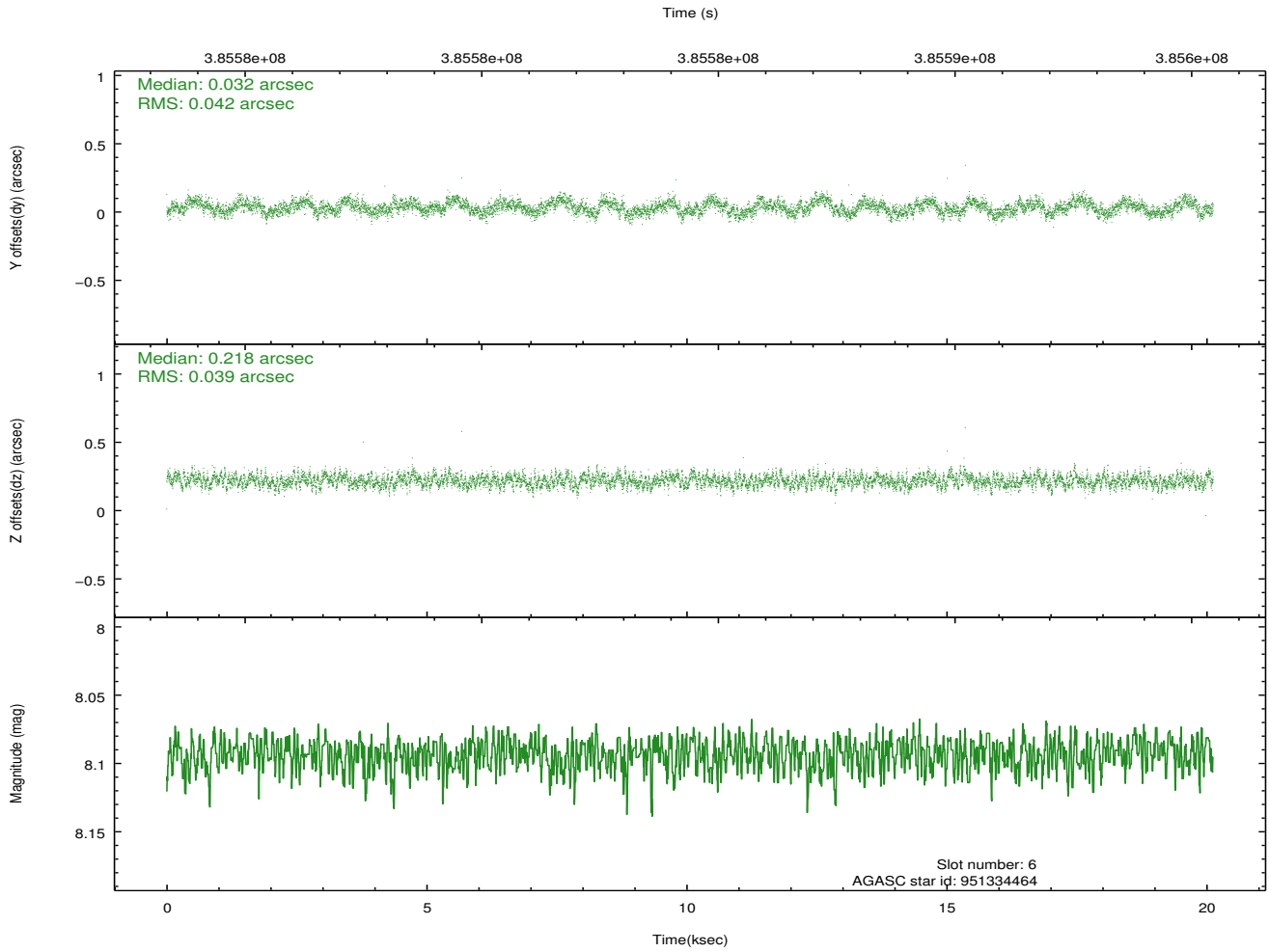
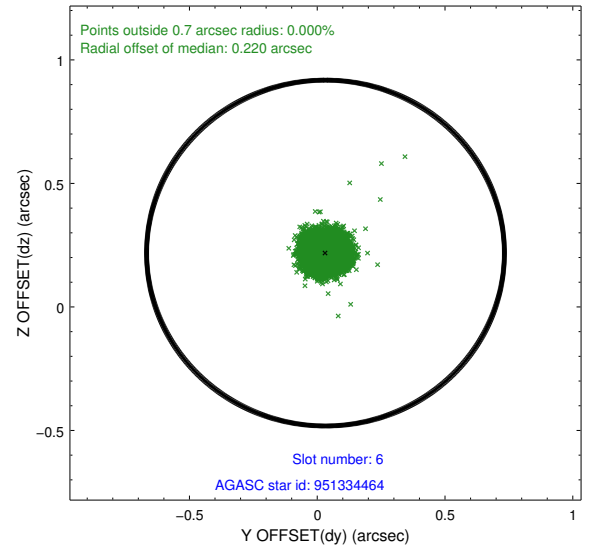
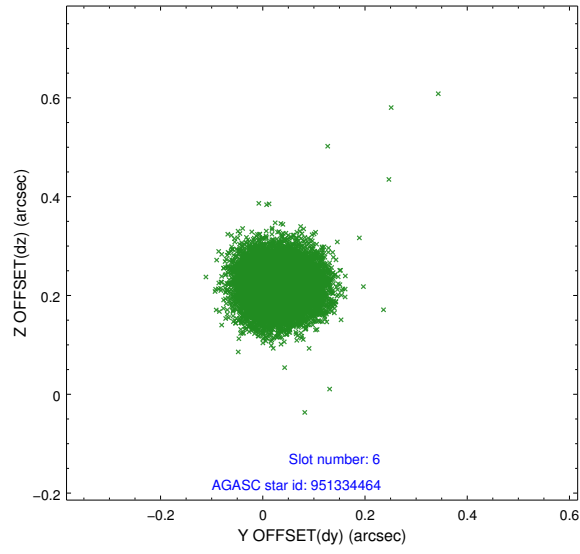




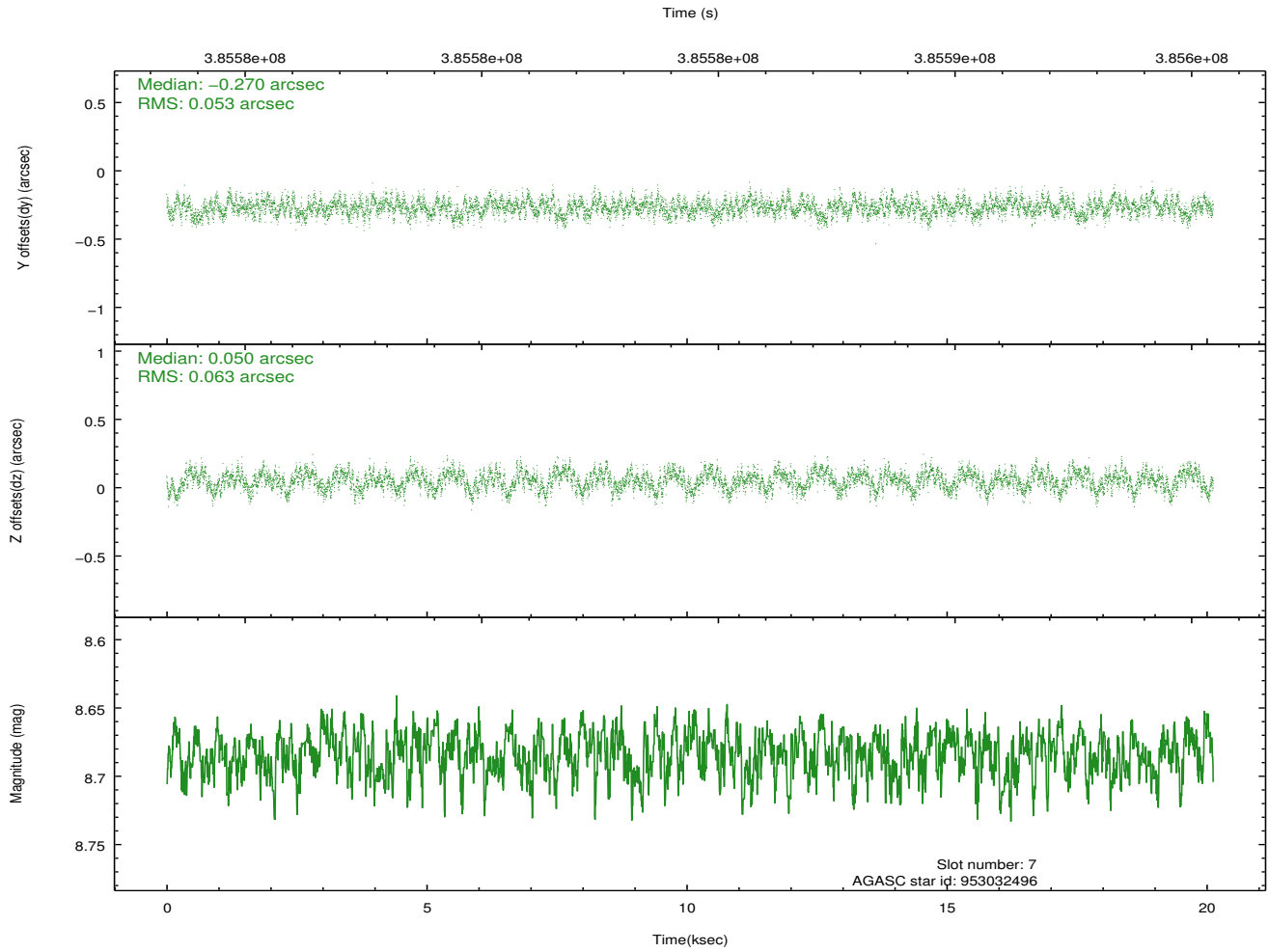
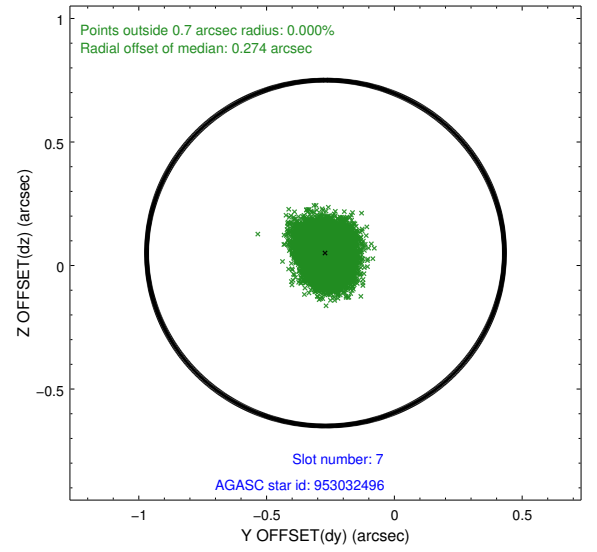
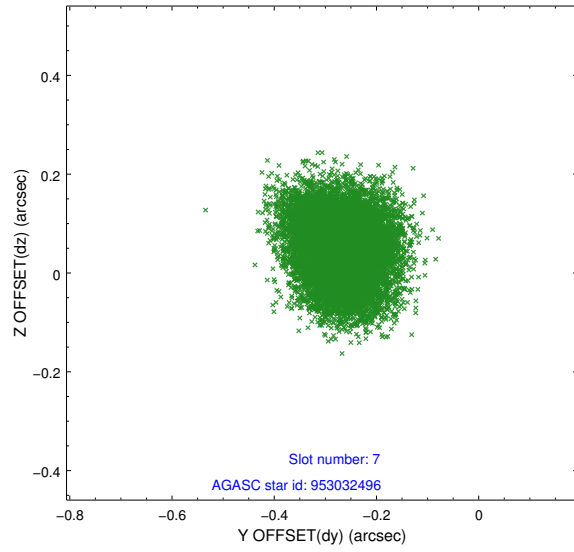
### 2.4.3 Slot 5



## 2.4.4 Slot 6

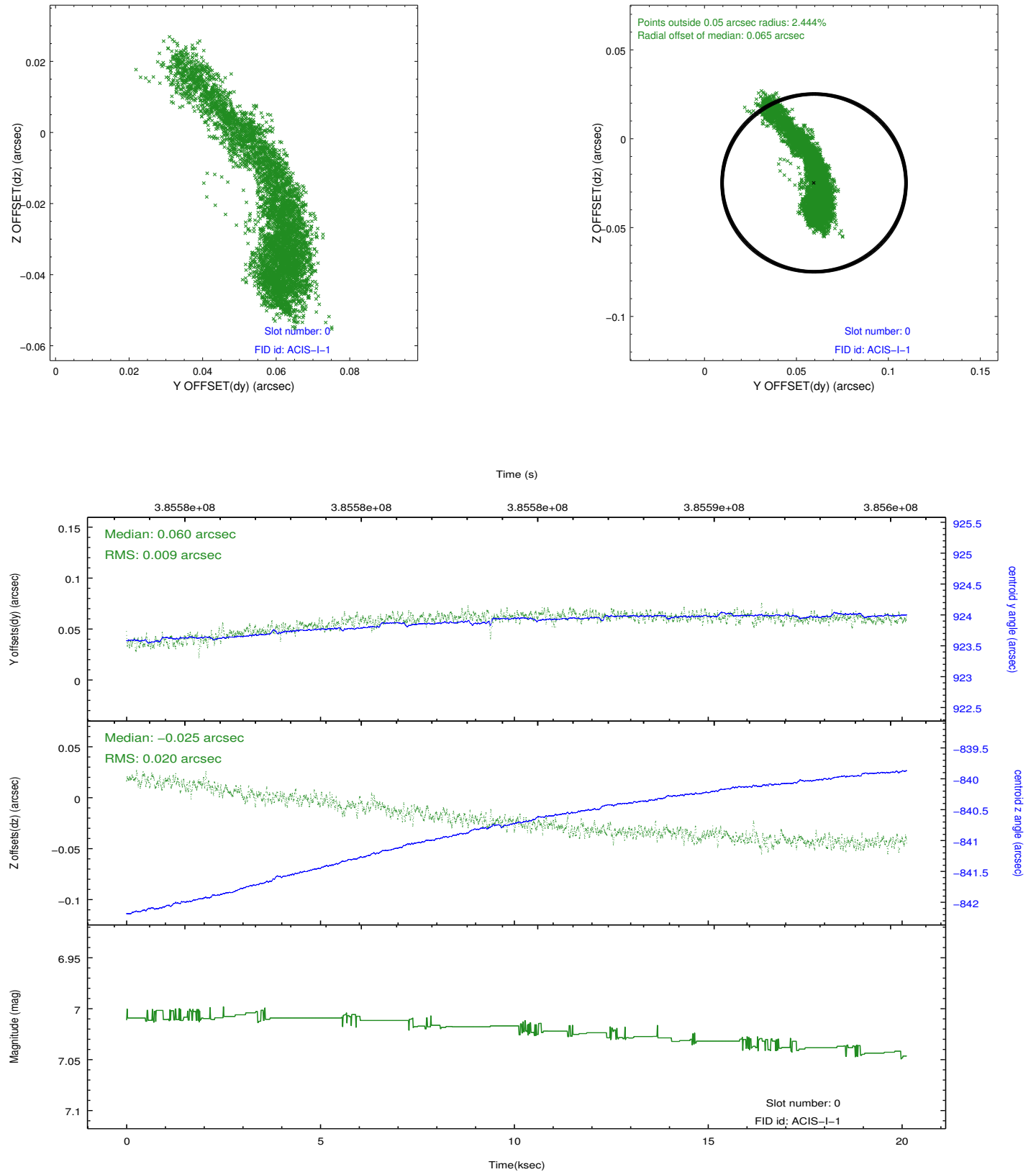


## 2.4.5 Slot 7

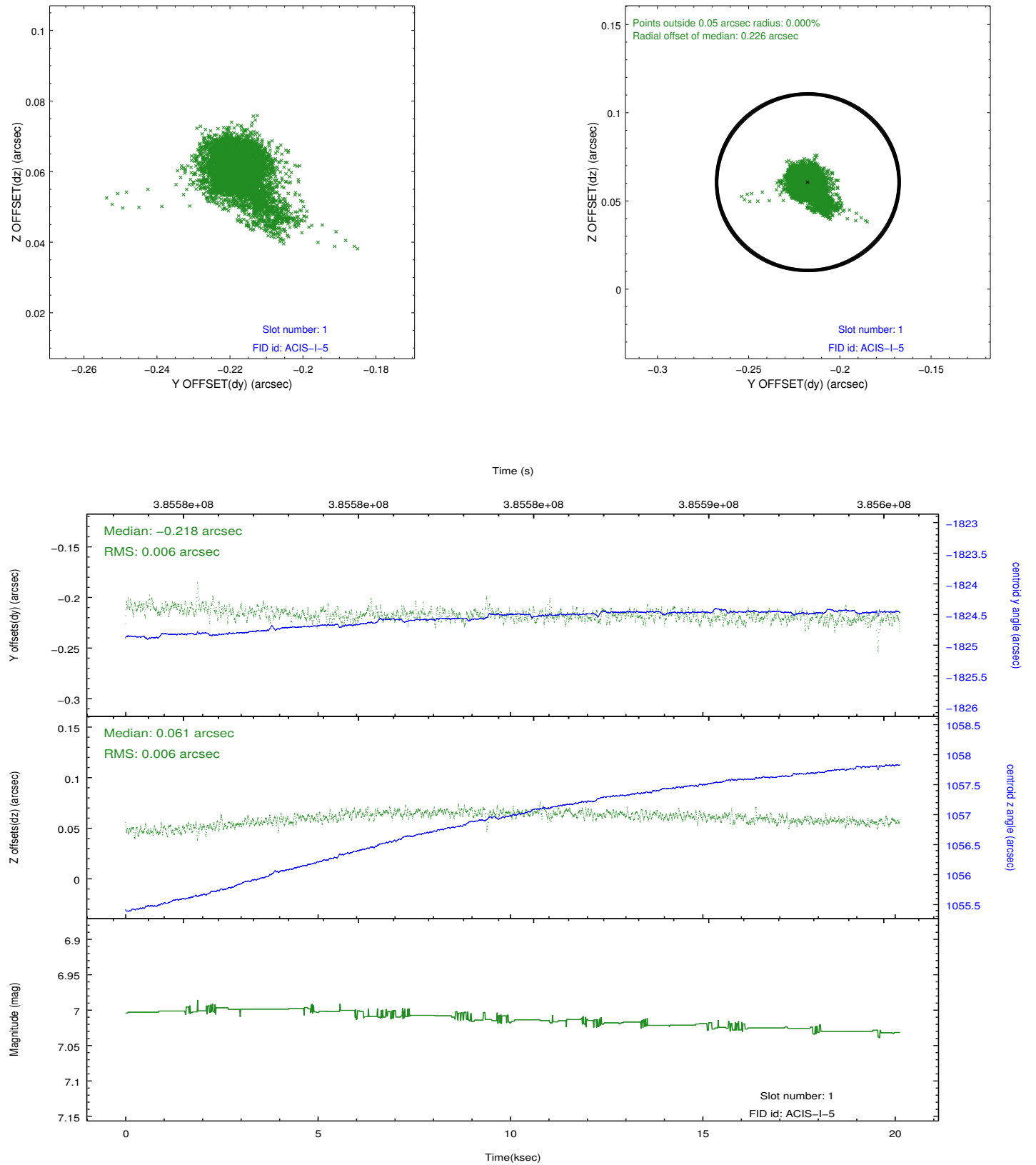


## 2.5 FID Slots

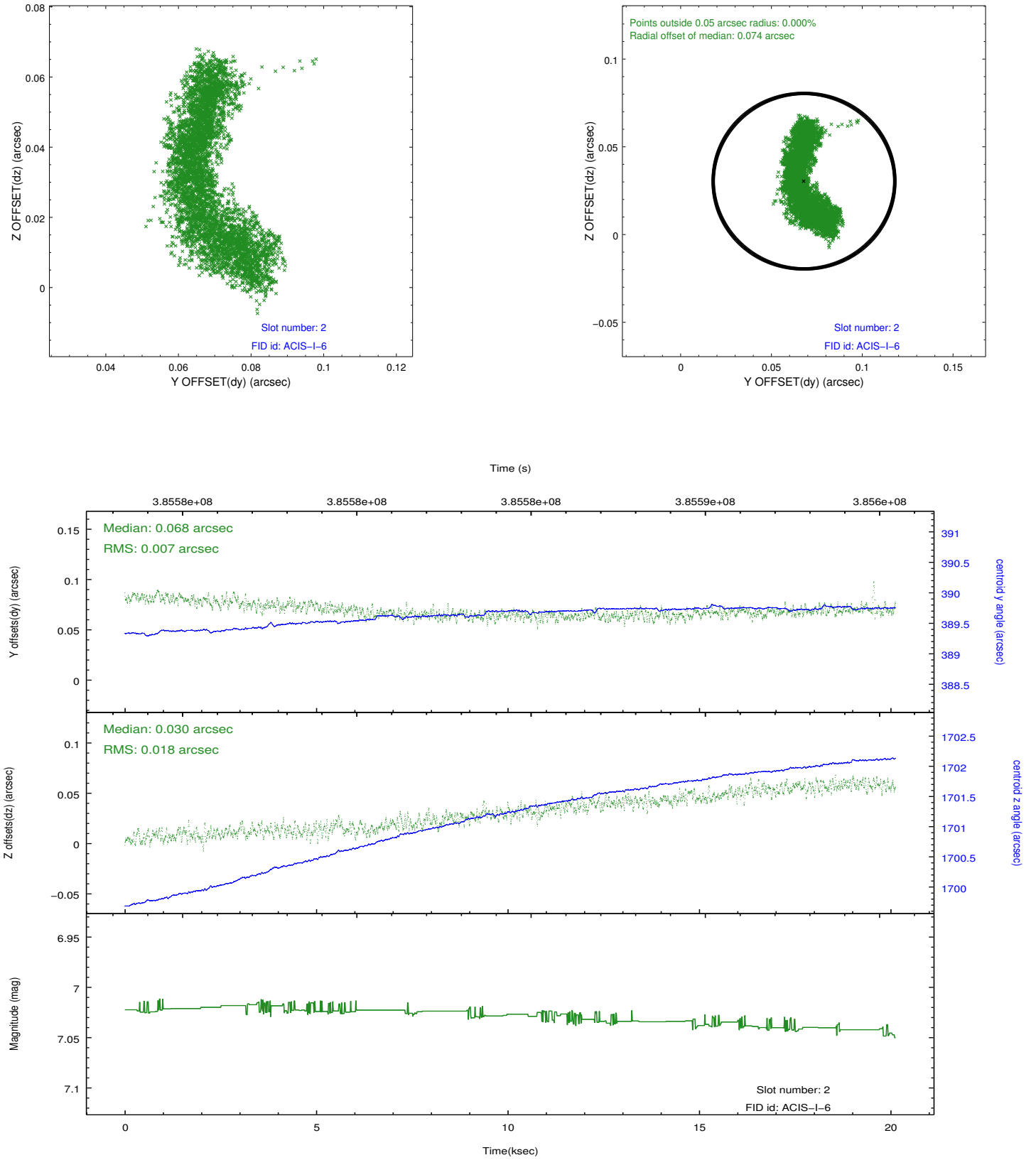
### 2.5.1 Slot 0



## 2.5.2 Slot 1



### 2.5.3 Slot 2



## A Summary

### A.1 Status

V&V Scientist	Beth Sundheim
V&V Date (YYYY-MM-DD)	2012.06.28
V&V Edition	1
V&V Disposition and Status	OK
V&V Charge Time	20.118399925113

### A.2 Comments