

V&V Reference Report

L2 ASCDS Version : 8.4.4

Observation 10900 - L2 Version 2
Chandra X-Ray Center

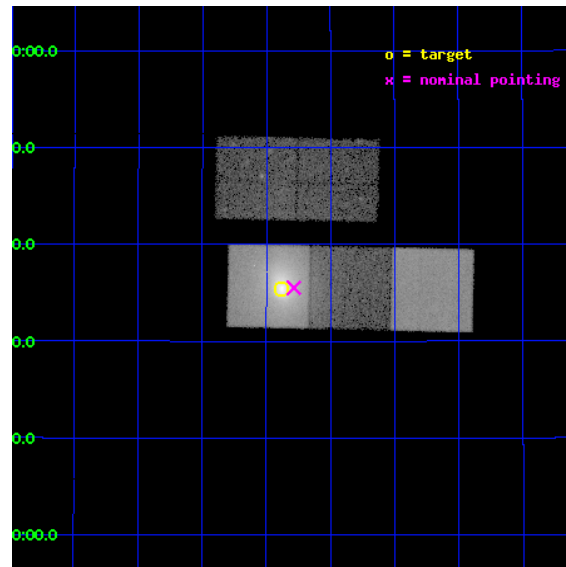
L2 Processing Date : Jun 4 2012

Contents

1	Front	2
2	OBI	3
2.1	OBI	3
2.1.1	Images	3
2.1.2	Bias	3
2.1.3	Parameters	4
2.1.4	Events	4
2.2	Compared Parameters	5
2.3	Aspect	6
2.4	Star Slots	9
2.4.1	Slot 3	9
2.4.2	Slot 4	10
2.4.3	Slot 5	11
2.4.4	Slot 6	12
2.4.5	Slot 7	13
2.5	FID Slots	14
2.5.1	Slot 0	14
2.5.2	Slot 1	15
2.5.3	Slot 2	16
A	Summary	17
A.1	Status	17
A.2	Comments	17

1 Front

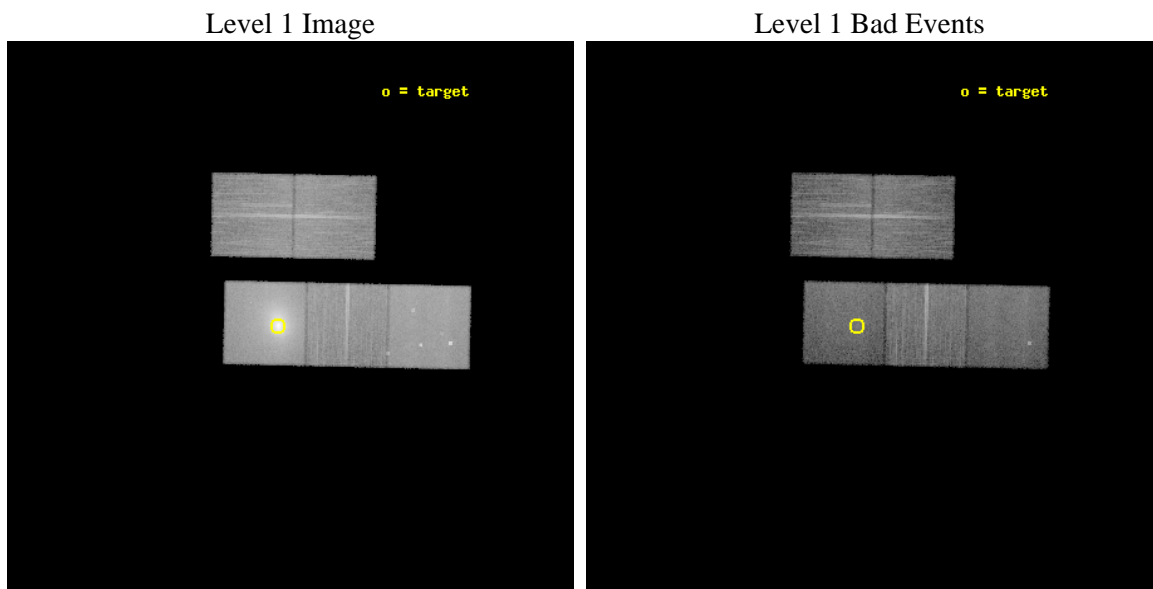
seq_num	890040	Sequence number
obs_id	10900	Observation id
title	Mapping the Contamination on the ACIS Filter with Abell 1795	Propo
observer	Dr. CXC Calibration	Principal investigator
object	Abell 1795	Source name
dtcycle	0	
cycle	P	events from which exps? Prim/Second/Both
ra_targ	207.219583	Observer's specified target RA [deg]
dec_targ	26.590833	Observer's specified target Dec [deg]
ra_nom	207.19630129489	Nominal RA [deg]
dec_nom	26.592066683199	Nominal Dec [deg]
roll_nom	181.23362119512	Nominal Roll [deg]
revision	2	Processing version of data
ontime	16033.20012331	Sum of GTIs [s]
livetime	15823.714560229	Livetime [s]
ontime2	16030.05912292	Sum of GTIs [s]
ontime3	16030.059142947	Sum of GTIs [s]
ontime5	16033.20012331	Sum of GTIs [s]
ontime6	16030.059132934	Sum of GTIs [s]
ontime7	16033.20012331	Sum of GTIs [s]
l2events	386402	Number of level 2 events



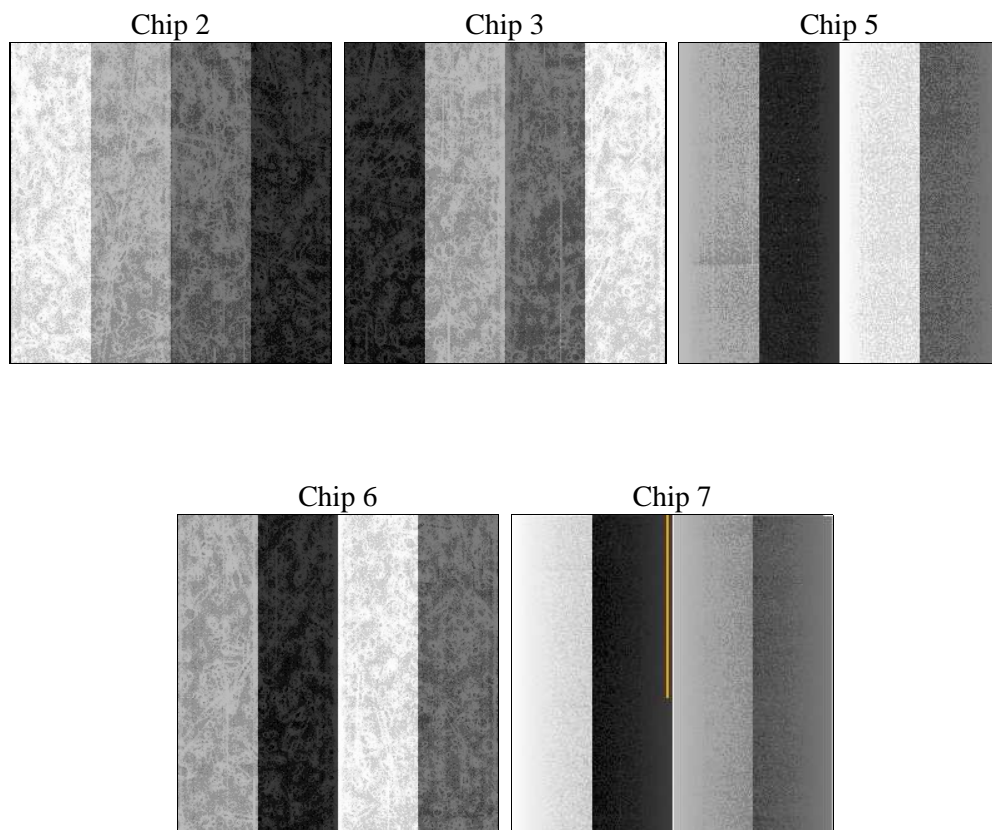
2 OBI

2.1 OBI

2.1.1 Images



2.1.2 Bias



2.1.3 Parameters

obi_num	0	Obi number	sched_exp_time	15902.000000	[s] Scheduled observation exposure time
ascdsver	8.4.4	Processing system revision	ontime	16033.20012331	Sum of GTIs [s]
caldsver	4.4.9	 	ontime2	16030.05912292	Sum of GTIs [s]
date	2012-06-04T15:25:03	Date and time of file creation	ontime3	16030.059142947	Sum of GTIs [s]
revision	2	Processing version of data	ontime5	16033.20012331	Sum of GTIs [s]
			ontime6	16030.059132934	Sum of GTIs [s]
			ontime7	16033.20012331	Sum of GTIs [s]
			l1events	981073	Number of level 1 events

2.1.4 Events

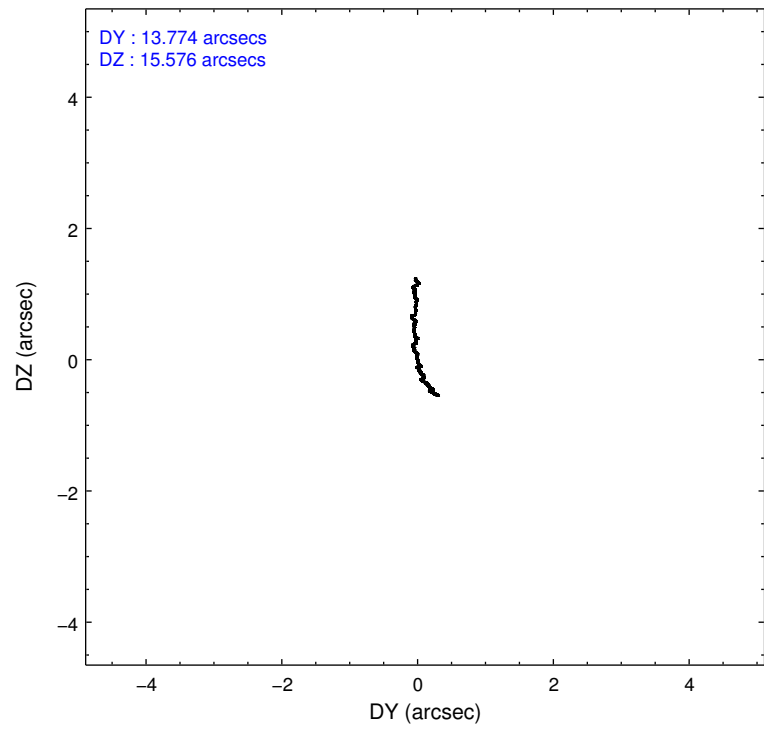
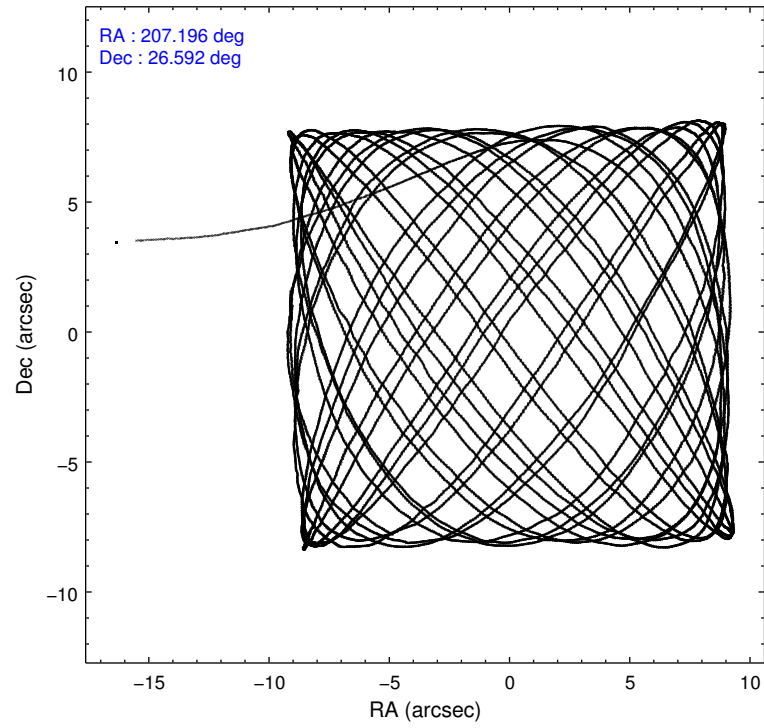
	ccd 2	ccd 3	ccd 5	ccd 6	ccd 7
level 1 events	141557	137626	203295	151937	346658
rejected events	126801	122668	104947	129114	94864
rejected %	89%	89%	51%	84%	27%

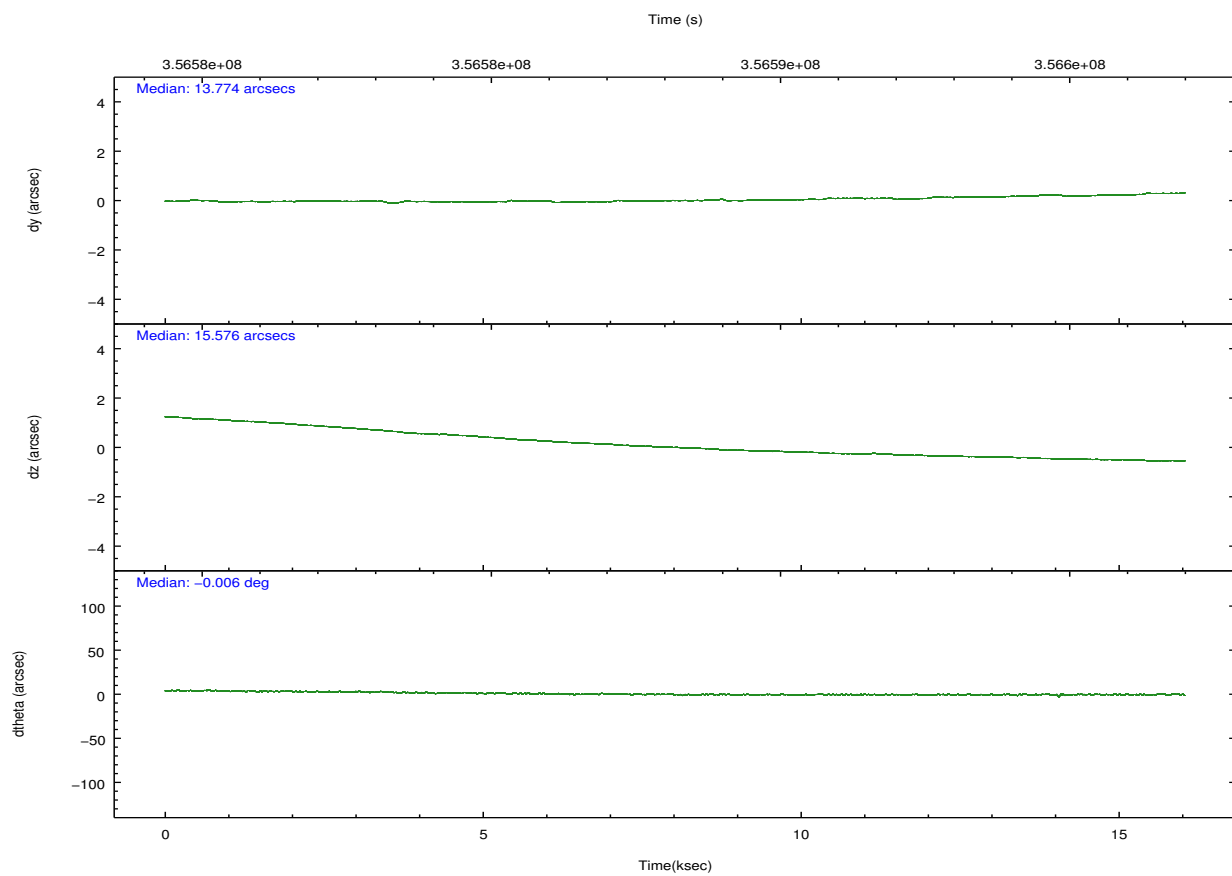
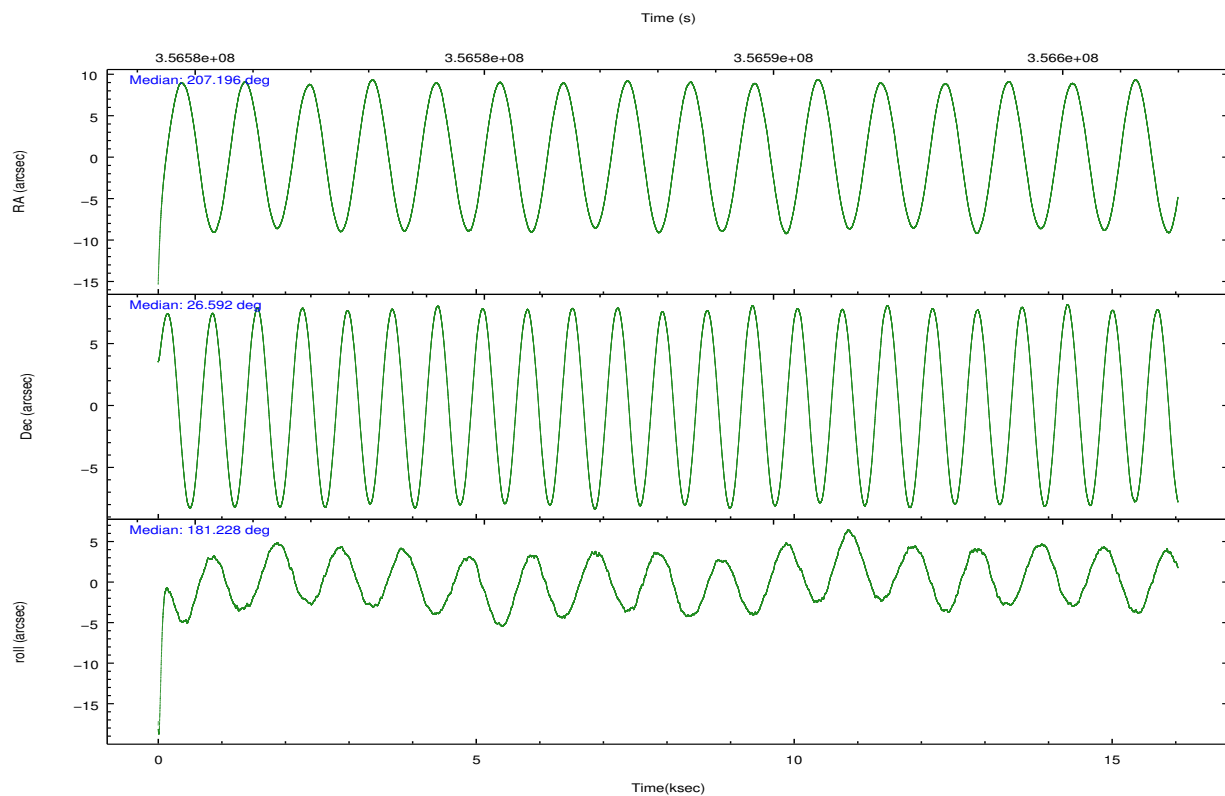
	ccd 2	ccd 3	ccd 5	ccd 6	ccd 7
grade 0 events	5937	6330	10021	11939	63689
	4%	4%	4%	7%	18%
grade 1 events	102	79	432	114	267
	0%	0%	0%	0%	0%
grade 2 events	3504	3169	30723	4164	62545
	2%	2%	15%	2%	18%
grade 3 events	1539	1540	4209	1900	27401
	1%	1%	2%	1%	7%
grade 4 events	1508	1548	3931	1806	27206
	1%	1%	1%	1%	7%
grade 5 events	4784	5752	15770	5716	18299
	3%	4%	7%	3%	5%
grade 6 events	2612	2711	51922	3435	74888
	1%	1%	25%	2%	21%
grade 7 events	121571	116497	86287	122863	72363
	85%	84%	42%	80%	20%

2.2 Compared Parameters

Parameter	Planned	Actual	Parameter	Planned	Actual
Instrument	ACIS	ACIS	Obspar format version number	7	7
Detector	ACIS-23567	ACIS-23567	Obspar file type	PREDICTED	ACTUAL
Grating	NONE	NONE	Obspar update status	NONE	UPDATED
Data mode	VFAINT	VFAINT	Number of optional ACIS chips dropped	0	0
Observation mode	POINTING	POINTING	On-chip summing requested	N	N
[deg] Pointing RA	207.222243	207.1963012948898	Subarray requested	NONE	NONE
[deg] Pointing Dec	26.606542	26.59206668319884	Alternating exposures requested	N	N
[deg] Pointing Roll	181.065392	181.2336211951209	[s] Primary exposure time	0.000000	3.1
[mm] SIM focus pos	-0.684267	-0.6828225247311905			
[mm] SIM defocus	0	0.001444936568705701			
[mm] SIM translation stage pos	-190.132523	-190.1425803651734			
[mm] SIM translation stage offset	0	0.01005778216563158			
[s] Observation start time (MET)	356580293.184000	356579121.65279			
Observation start date	2009-04-20T02:03:47	2009-04-20T01:45:21			
[s] Observation end time (MET)	356596195.184000	356596329.35365			
Observation end date	2009-04-20T06:28:49	2009-04-20T06:32:09			
Read mode	TIMED	TIMED			

2.3 Aspect



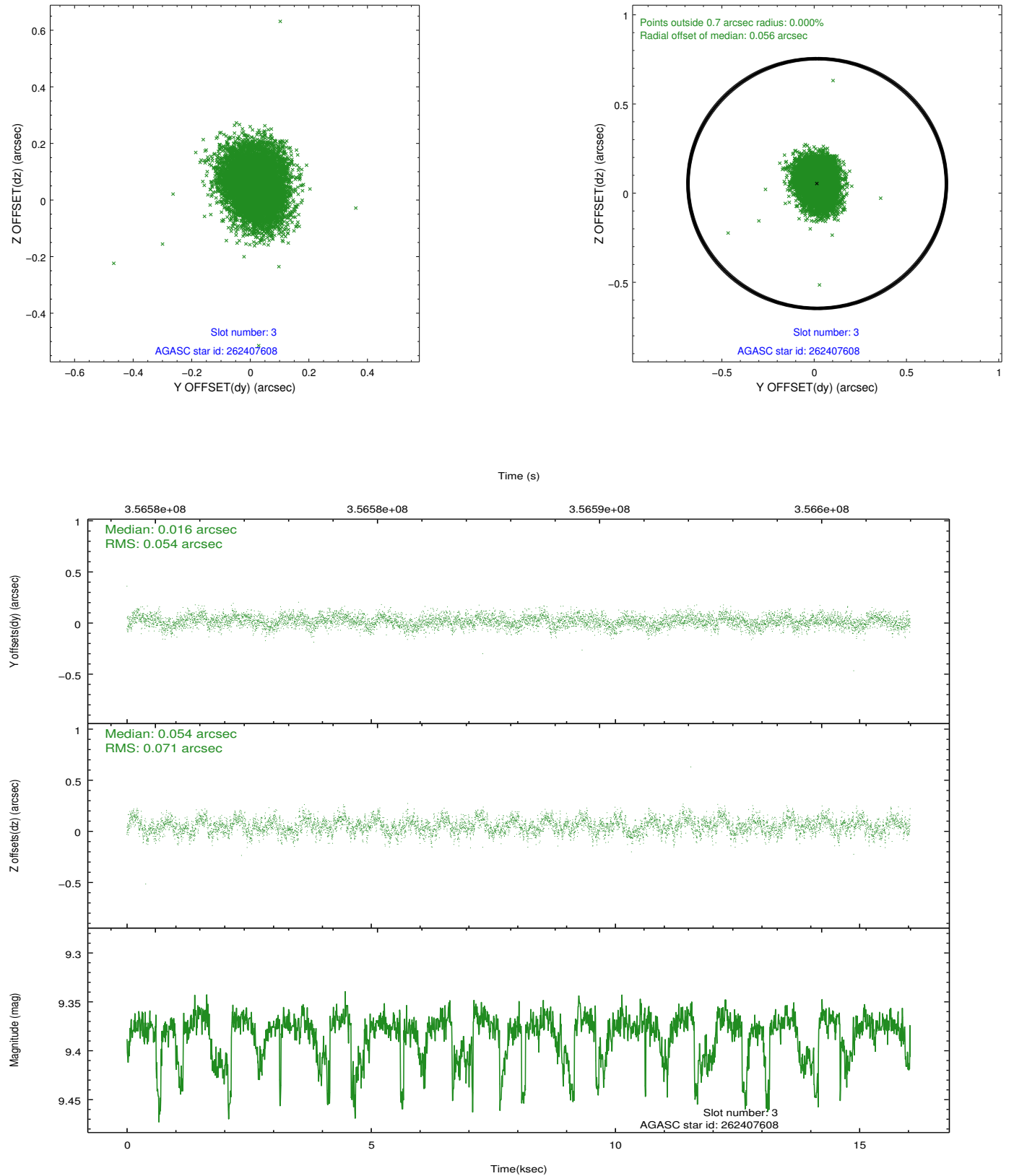


Slot Statistics

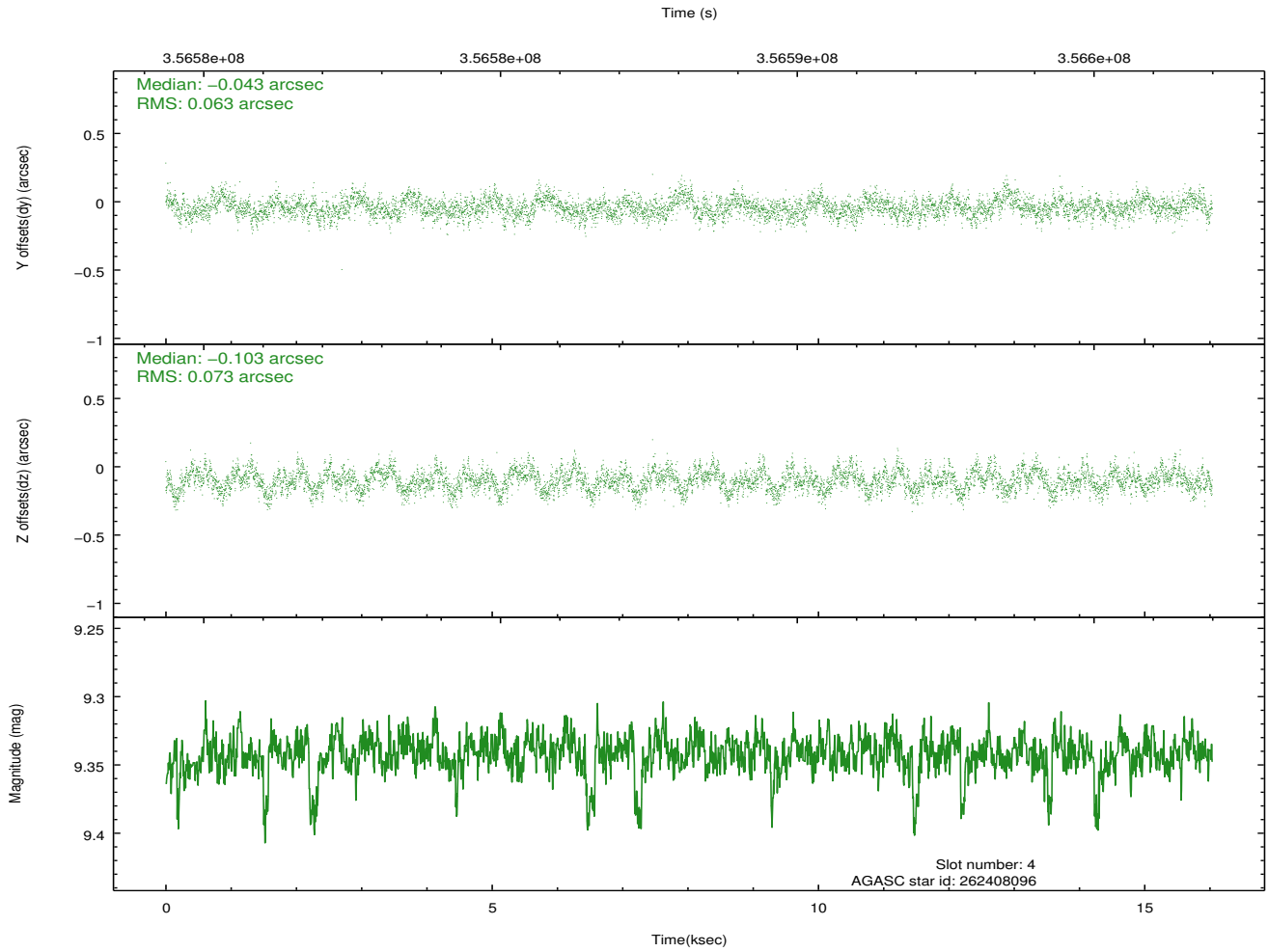
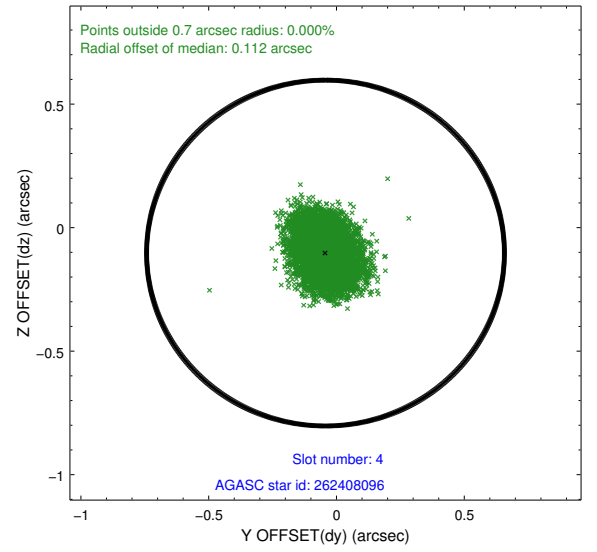
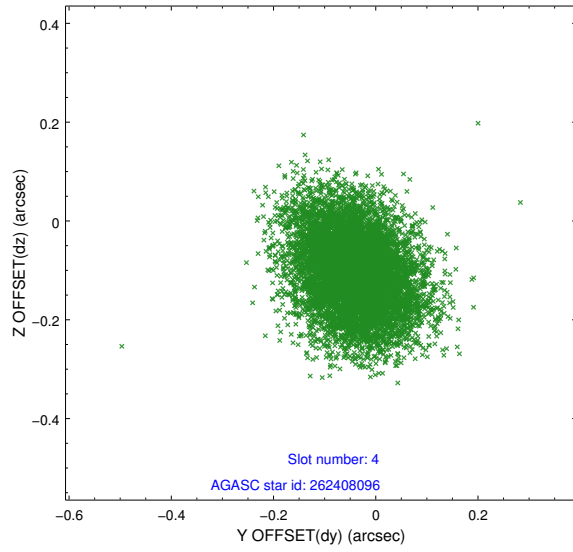
slot	status	id	mag	n_pts	med_dy	med_dz	dr1	dr2	ra	dec	mean_y	mean_z
0	FID	ACIS-S-1	6.98	3912	0.068	-0.063	0.026	0.045	0.000000	0.000000	929.36	-1732.75
1	FID	ACIS-S-5	7.01	3912	-0.147	0.034	0.012	0.029	0.000000	0.000000	-1819.71	164.61
2	FID	ACIS-S-6	7.11	3912	0.056	0.039	0.019	0.027	0.000000	0.000000	394.59	808.89
3	GUIDE	262407608	9.38	7787	0.016	0.054	0.095	0.155	207.378401	26.435507	-491.68	625.04
4	GUIDE	262408096	9.34	7786	-0.043	-0.103	0.103	0.168	207.011678	26.515421	684.80	315.02
5	GUIDE	262408512	7.99	7820	-0.198	0.030	0.068	0.108	207.800210	27.128796	-1886.14	-1849.42
6	GUIDE	262409552	8.19	7821	0.053	0.088	0.074	0.119	206.584269	27.192805	2003.73	-2152.86
7	GUIDE	262275256	7.73	7822	0.171	-0.069	0.066	0.117	206.467522	27.226414	2375.05	-2283.17

2.4 Star Slots

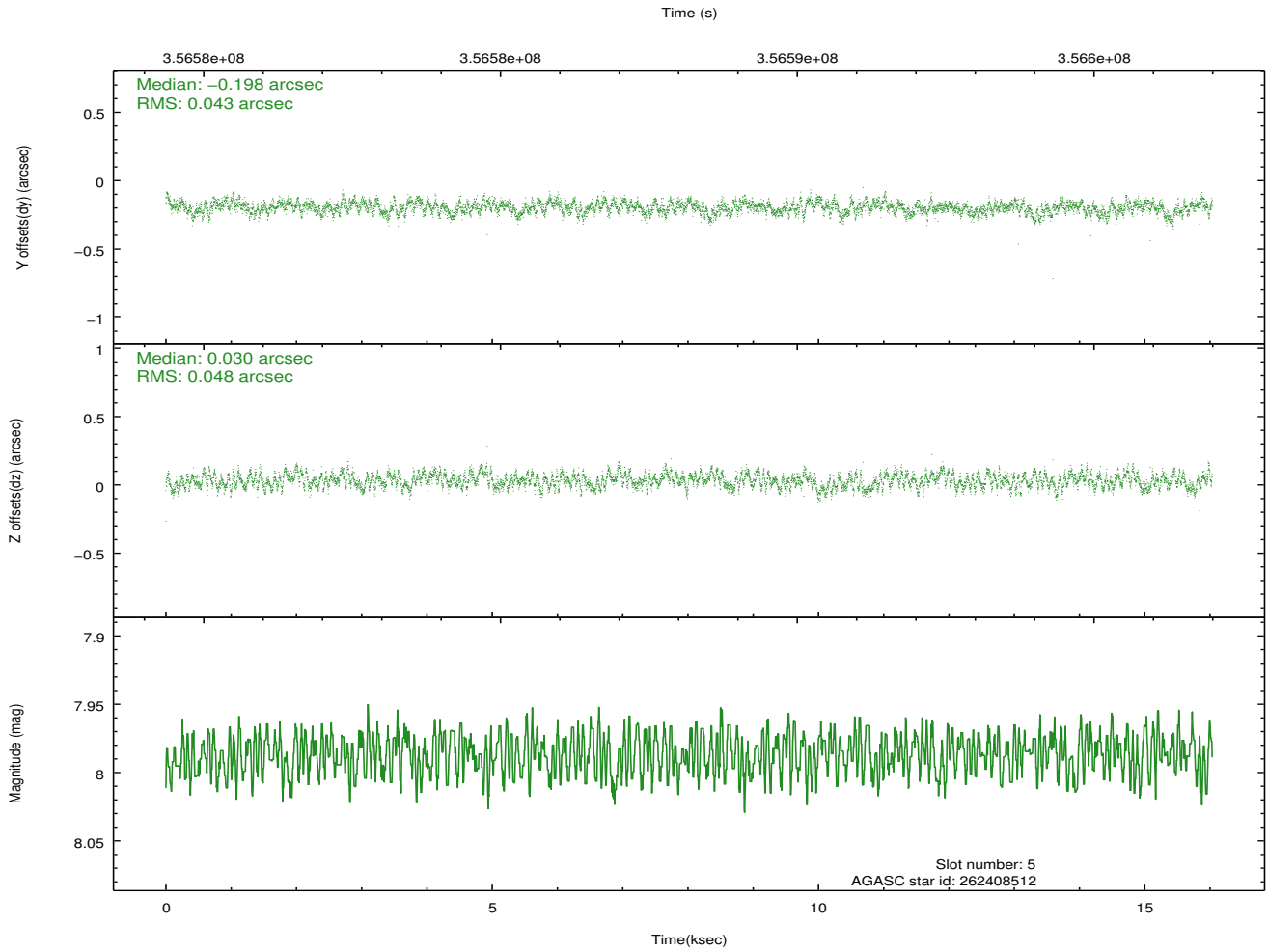
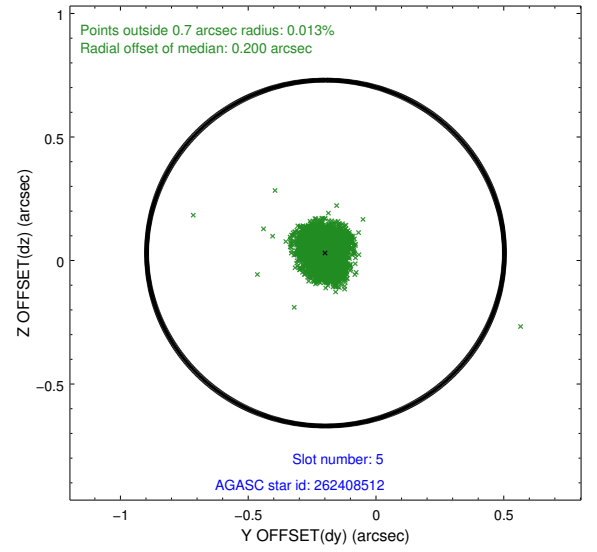
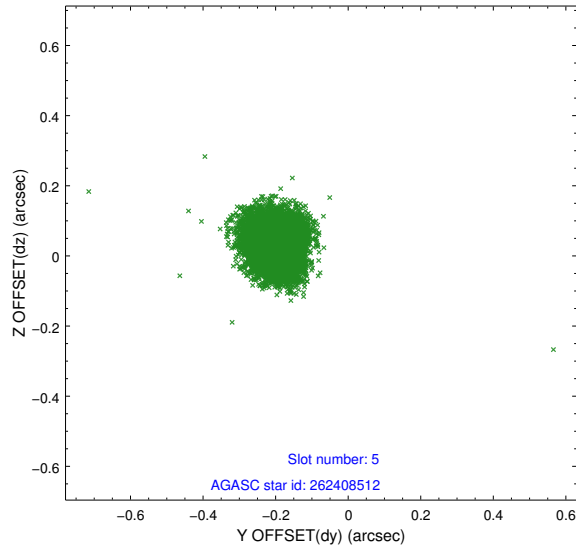
2.4.1 Slot 3



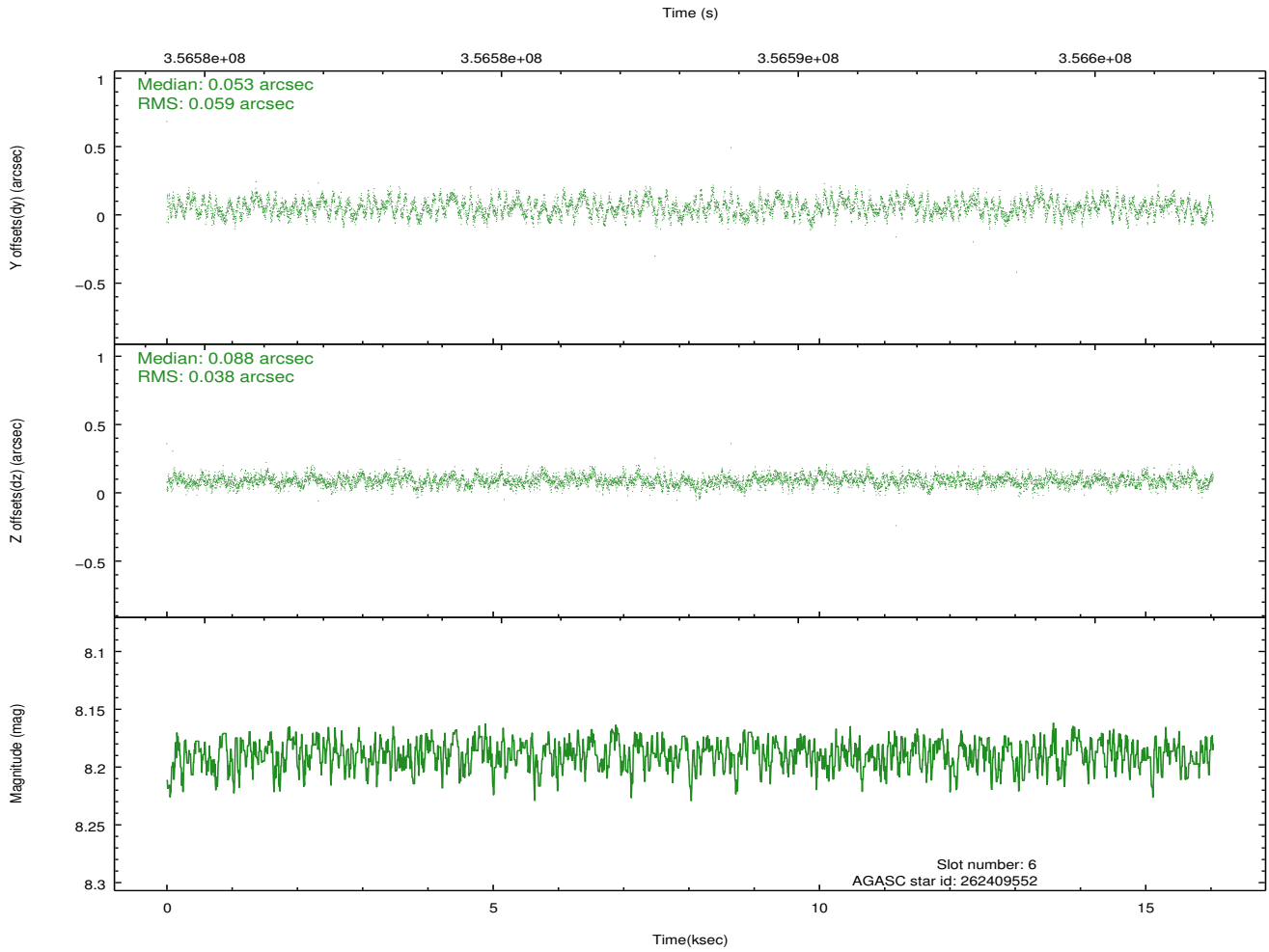
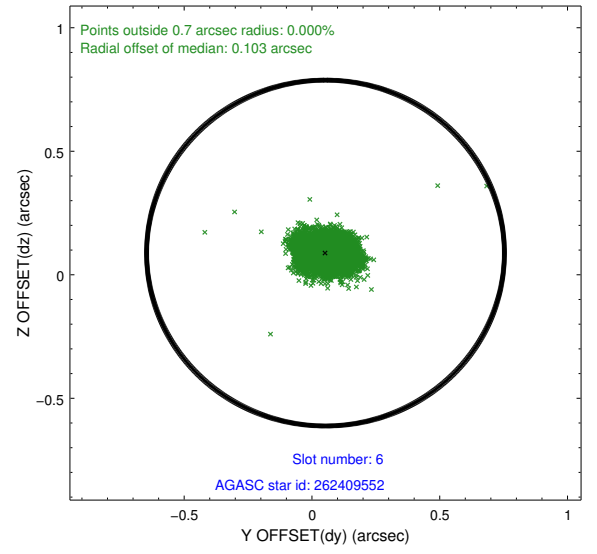
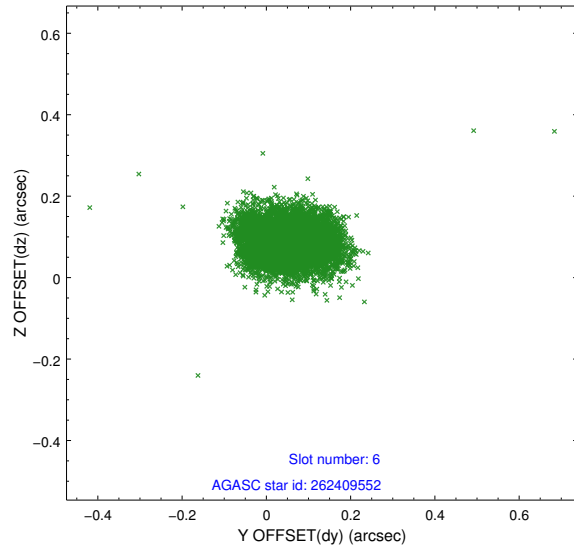
2.4.2 Slot 4



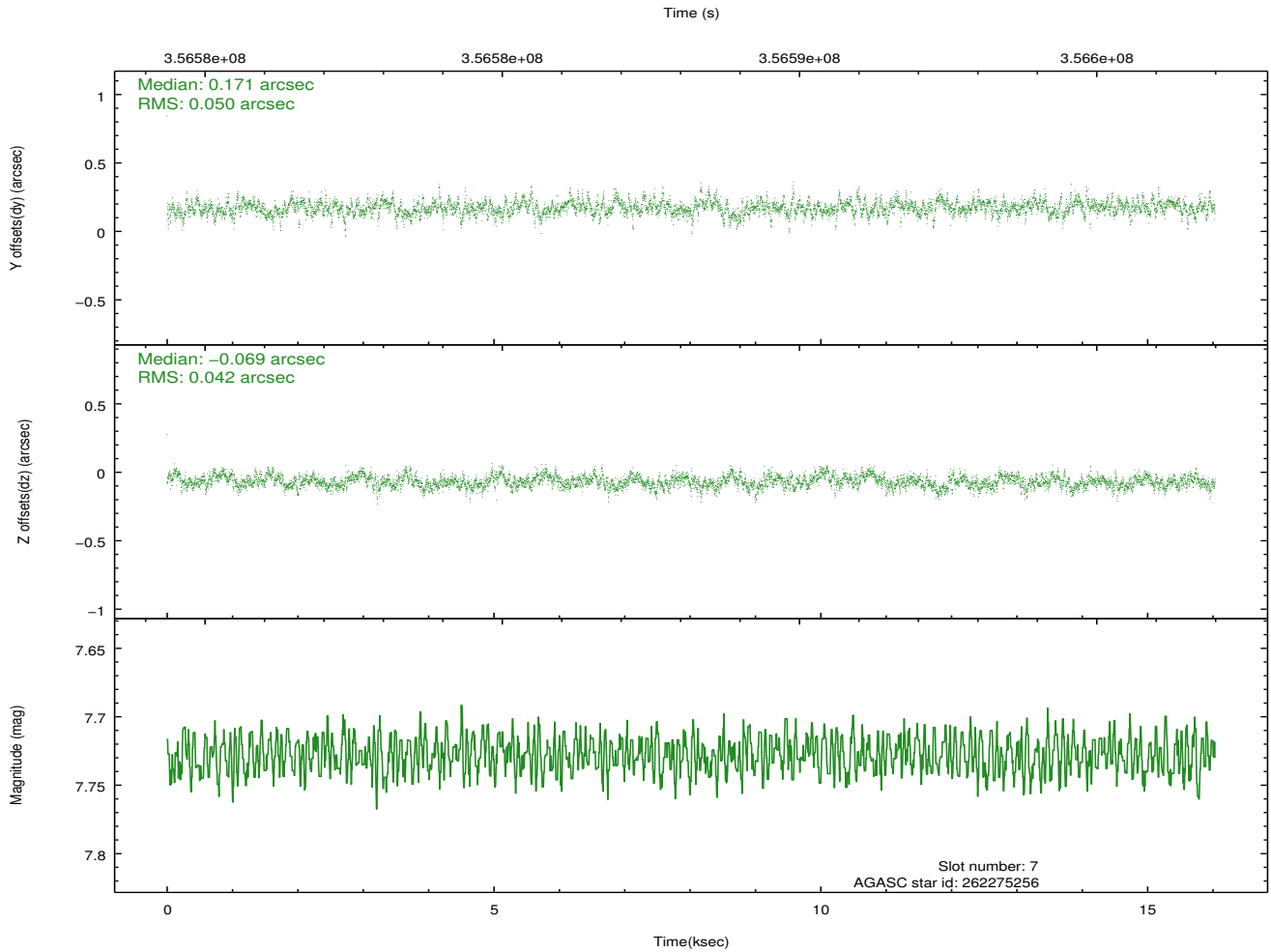
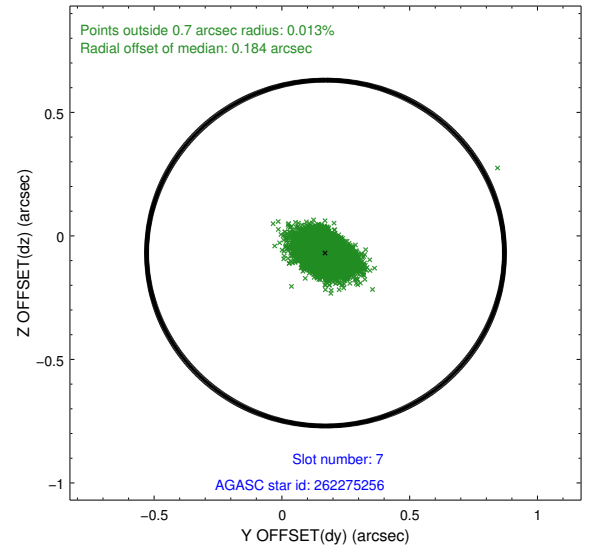
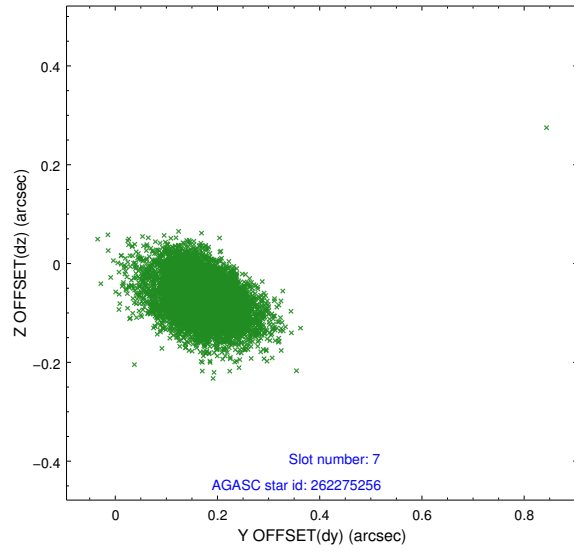
2.4.3 Slot 5



2.4.4 Slot 6

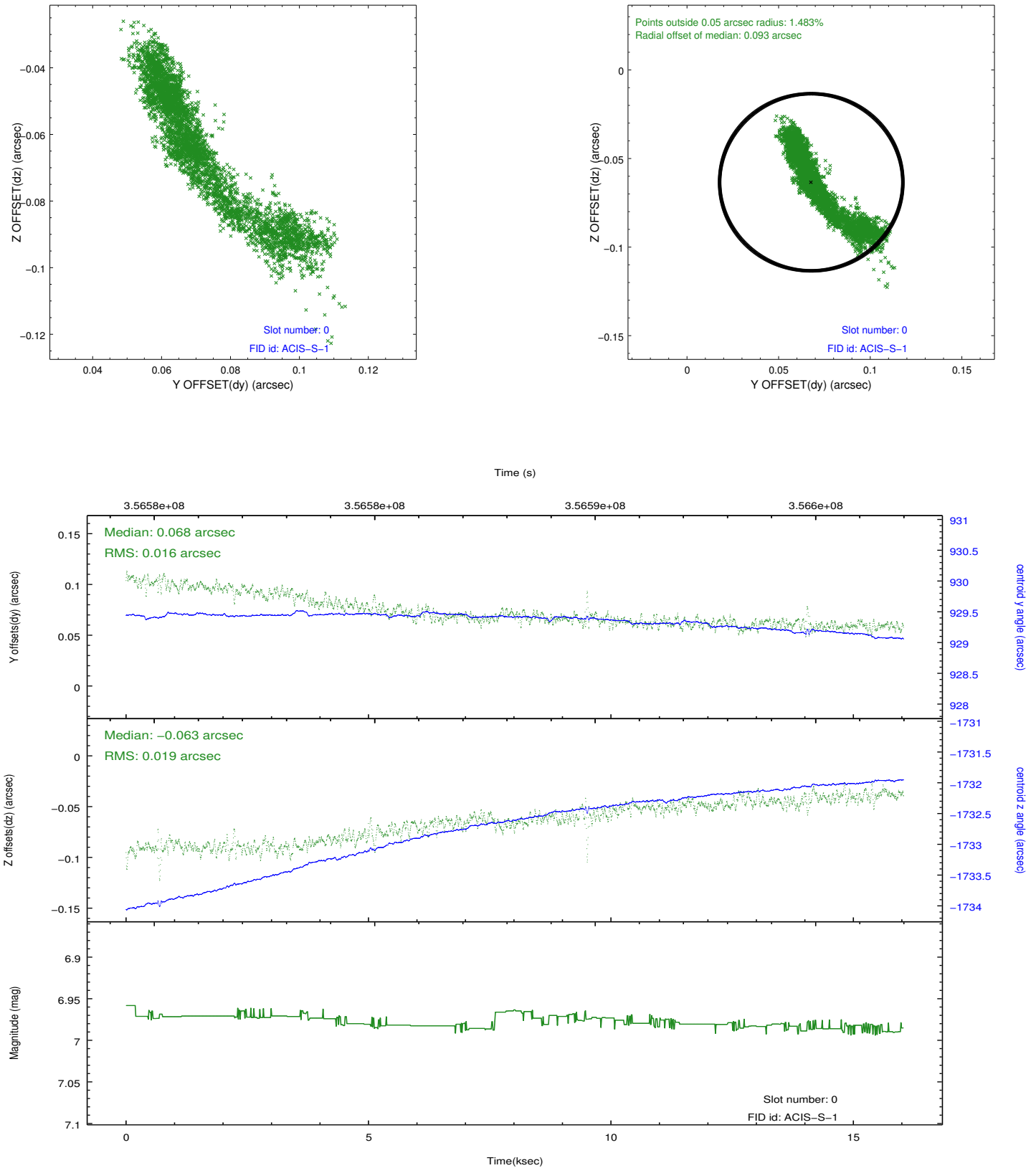


2.4.5 Slot 7

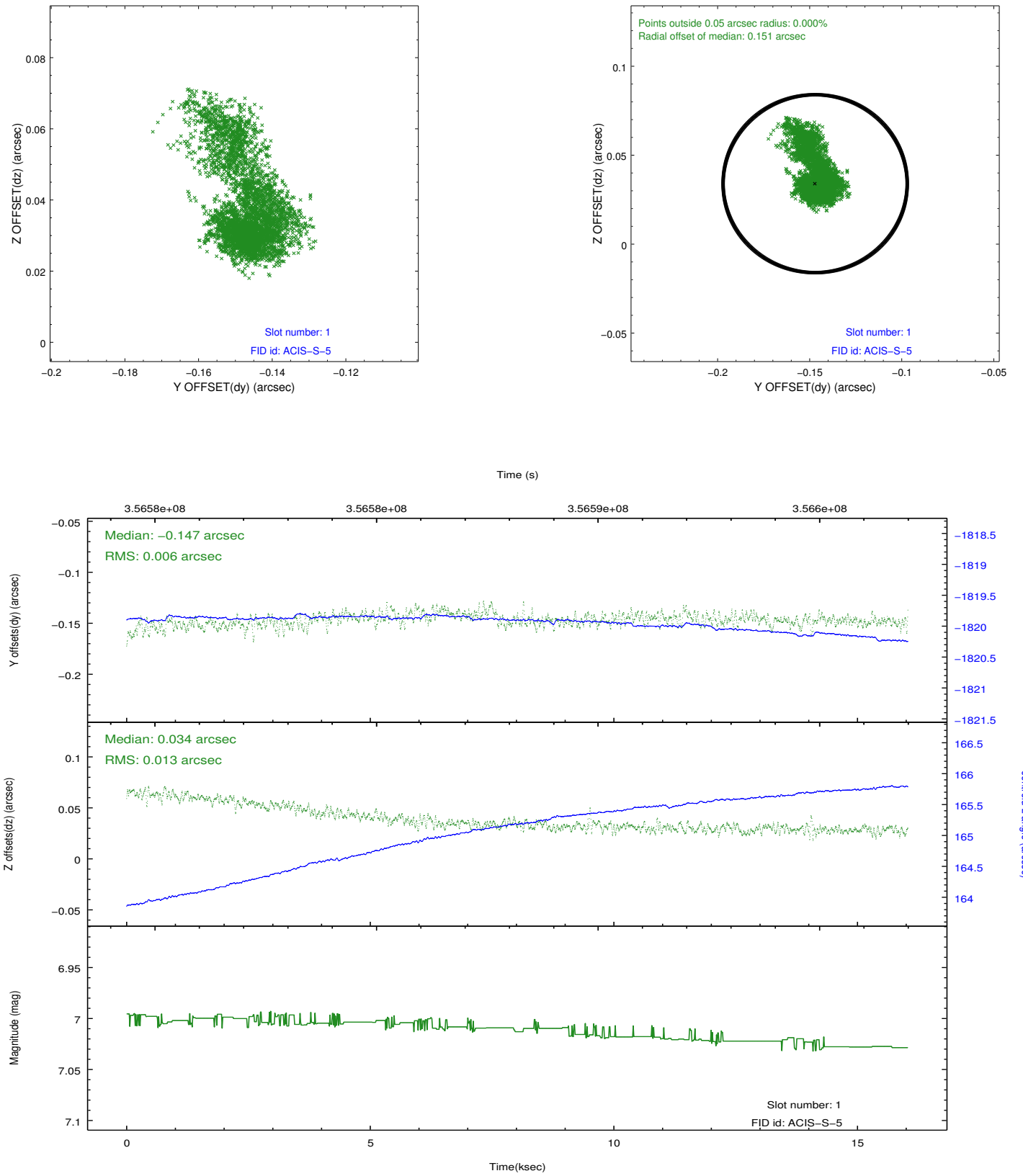


2.5 FID Slots

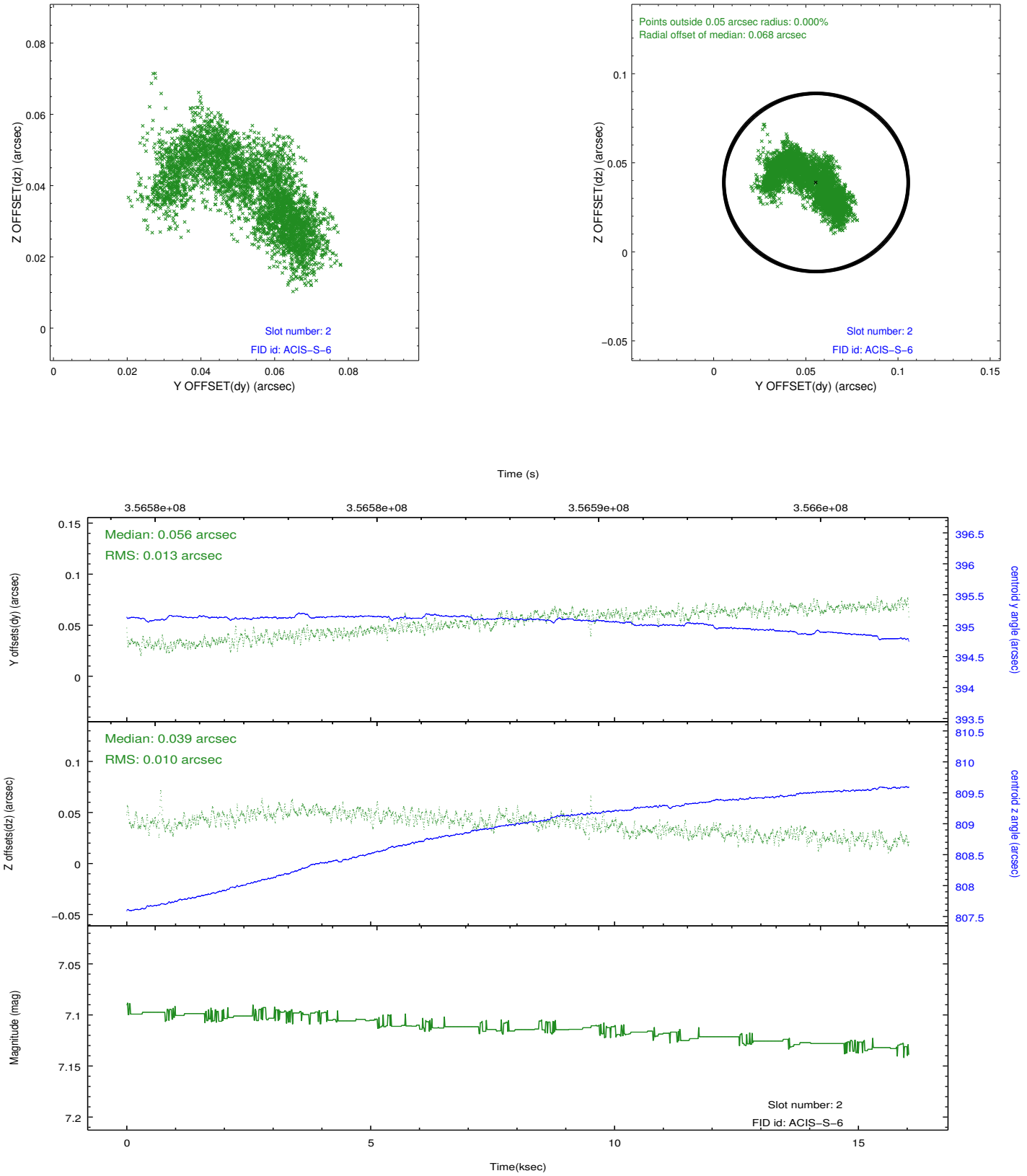
2.5.1 Slot 0



2.5.2 Slot 1



2.5.3 Slot 2



A Summary

A.1 Status

V&V Scientist	Beth Sundheim
V&V Date (YYYY-MM-DD)	2012.06.07
V&V Edition	1
V&V Disposition and Status	OK
V&V Charge Time	16.0332001

A.2 Comments