

V&V Reference Report

L2 ASCDS Version : 8.4.5

Observation 10810 - L2 Version 2
Chandra X-Ray Center

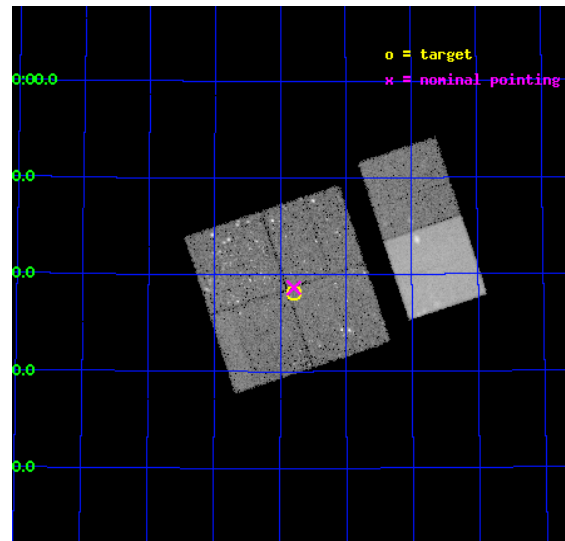
L2 Processing Date : Jun 6 2012

Contents

1	Front	2
2	OBI	3
2.1	OBI	3
2.1.1	Images	3
2.1.2	Bias	3
2.1.3	Parameters	4
2.1.4	Events	4
2.2	Compared Parameters	5
2.3	Aspect	6
2.4	Star Slots	9
2.4.1	Slot 3	9
2.4.2	Slot 4	10
2.4.3	Slot 5	11
2.4.4	Slot 6	12
2.4.5	Slot 7	13
2.5	FID Slots	14
2.5.1	Slot 0	14
2.5.2	Slot 1	15
2.5.3	Slot 2	16
A	Summary	17
A.1	Status	17
A.2	Comments	17

1 Front

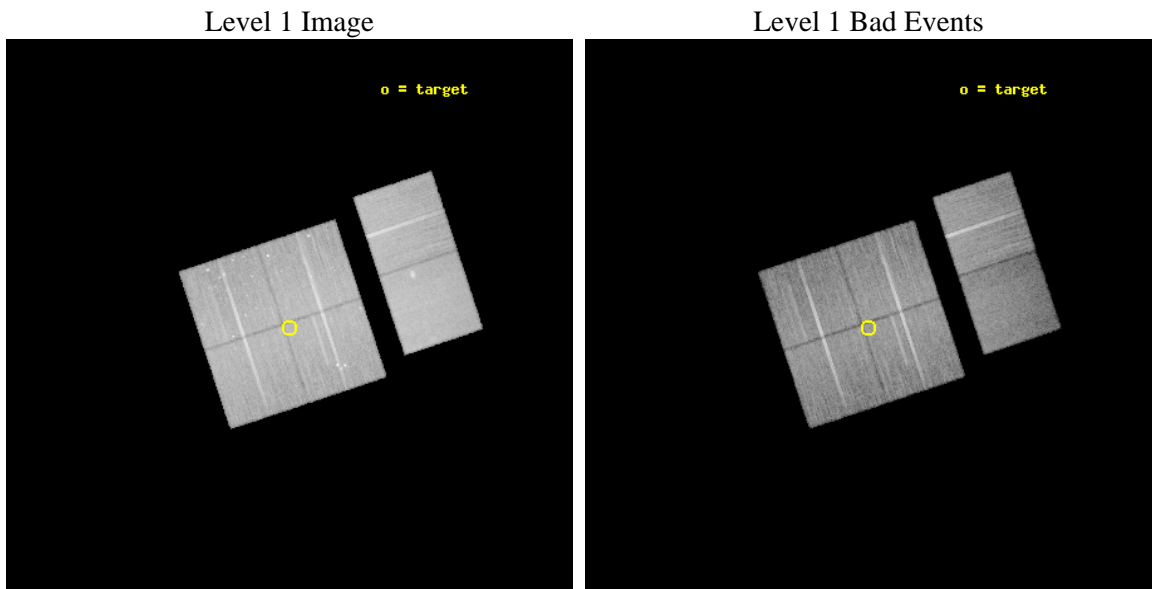
seq_num	200536	Sequence number
obs_id	10810	Observation id
title	Evolution of Young Stars in the Large Massive Cluster Cep OB3b	Pro
observer	Mr. Thomas Allen	Principal investigator
object	Cep B sub-cluster	Source name
dtcycle	0	
cycle	P	events from which exps? Prim/Second/Both
ra_targ	343.947917	Observer's specified target RA [deg]
dec_targ	62.636194	Observer's specified target Dec [deg]
ra_nom	343.94826557183	Nominal RA [deg]
dec_nom	62.644261397882	Nominal Dec [deg]
roll_nom	71.674846327545	Nominal Roll [deg]
revision	2	Processing version of data
ontime	23139.1179533	Sum of GTIs [s]
livetime	22846.116509072	Livetime [s]
ontime0	23142.358943522	Sum of GTIs [s]
ontime1	23145.599913836	Sum of GTIs [s]
ontime2	23142.358973384	Sum of GTIs [s]
ontime3	23139.1179533	Sum of GTIs [s]
ontime6	23145.599913836	Sum of GTIs [s]
ontime7	23145.599913836	Sum of GTIs [s]
l2events	208294	Number of level 2 events



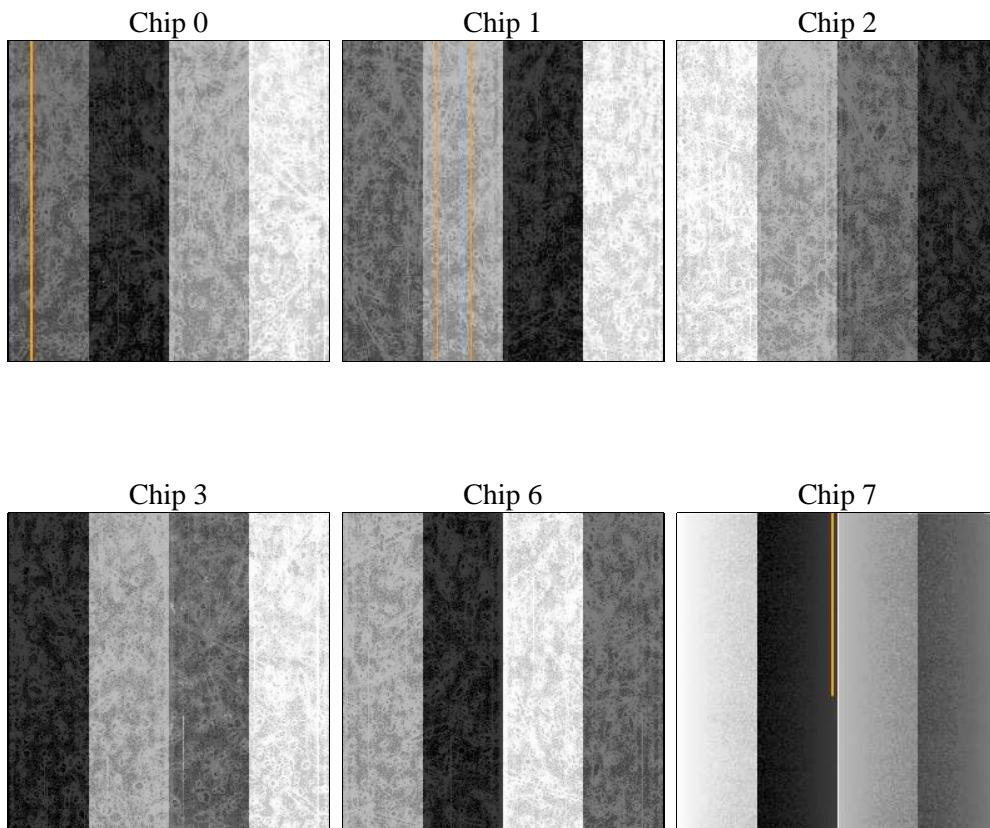
2 OBI

2.1 OBI

2.1.1 Images



2.1.2 Bias



2.1.3 Parameters

obi_num	0	Obi number	sched_exp_time	23000.000000	[s] Scheduled observation exposure time
ascdsver	8.4.5	Processing system revision	ontime	23139.1179533	Sum of GTIs [s]
caldsver	4.4.10	 	ontime0	23142.358943522	Sum of GTIs [s]
date	2012-06-07T00:12:50	Date and time of file creation	ontime1	23145.599913836	Sum of GTIs [s]
revision	2	Processing version of data	ontime2	23142.358973384	Sum of GTIs [s]
			ontime3	23139.1179533	Sum of GTIs [s]
			ontime6	23145.599913836	Sum of GTIs [s]
			ontime7	23145.599913836	Sum of GTIs [s]
			l1events	1285286	Number of level 1 events

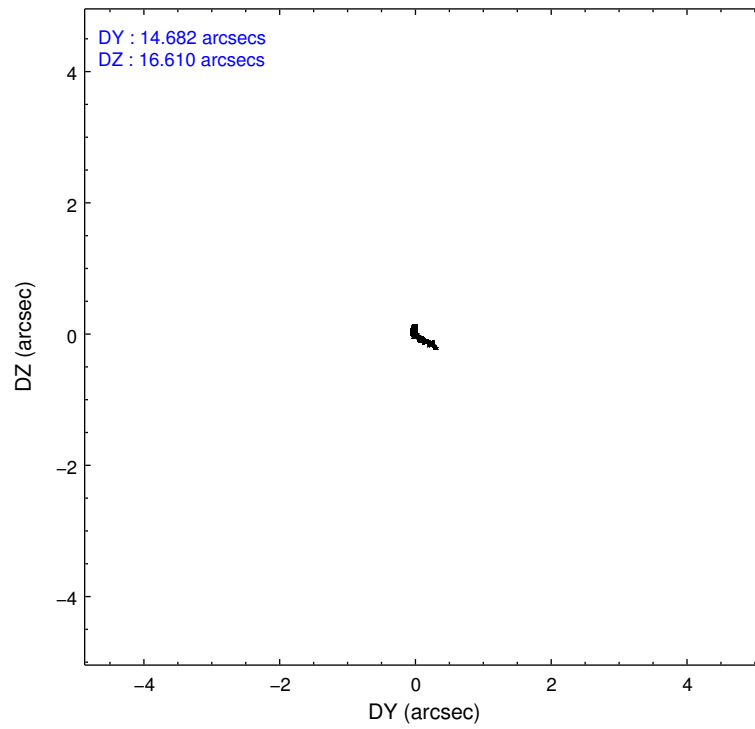
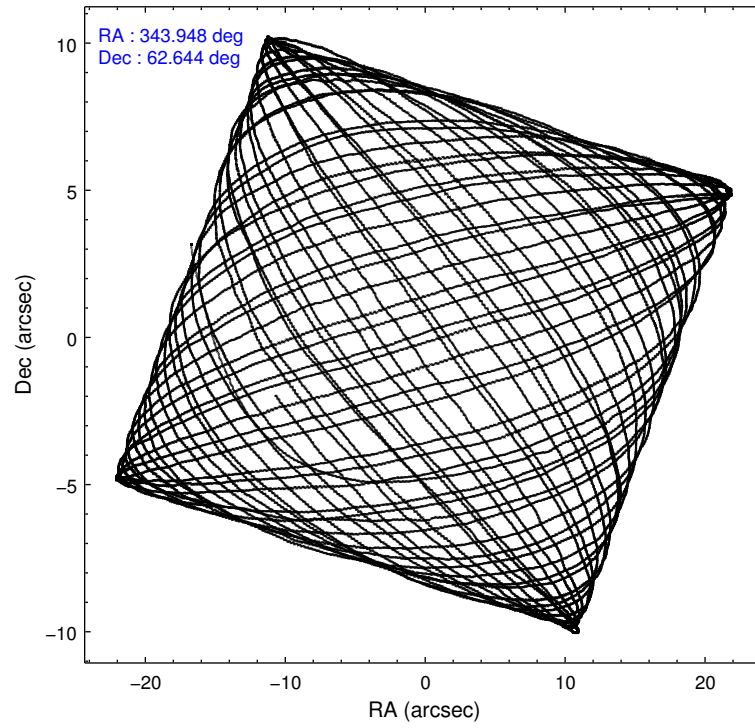
2.1.4 Events

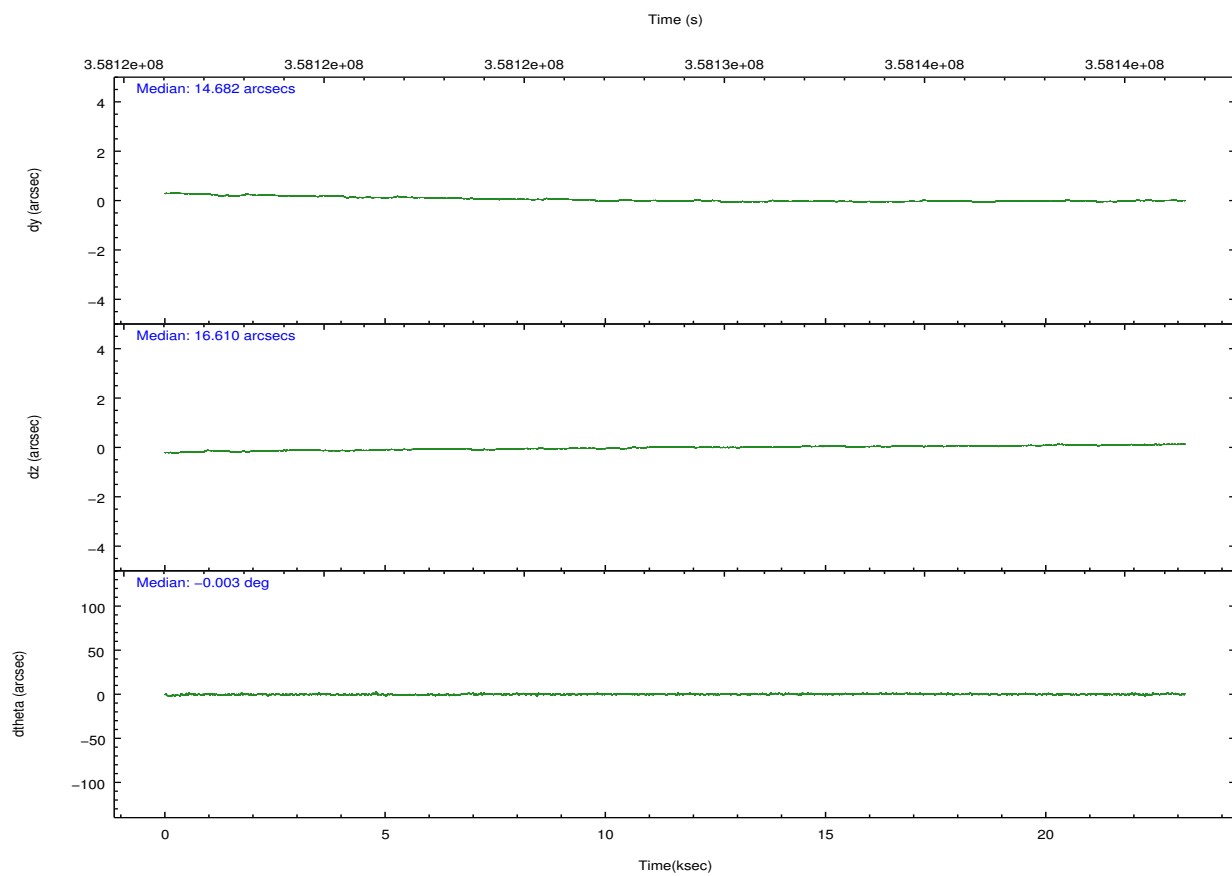
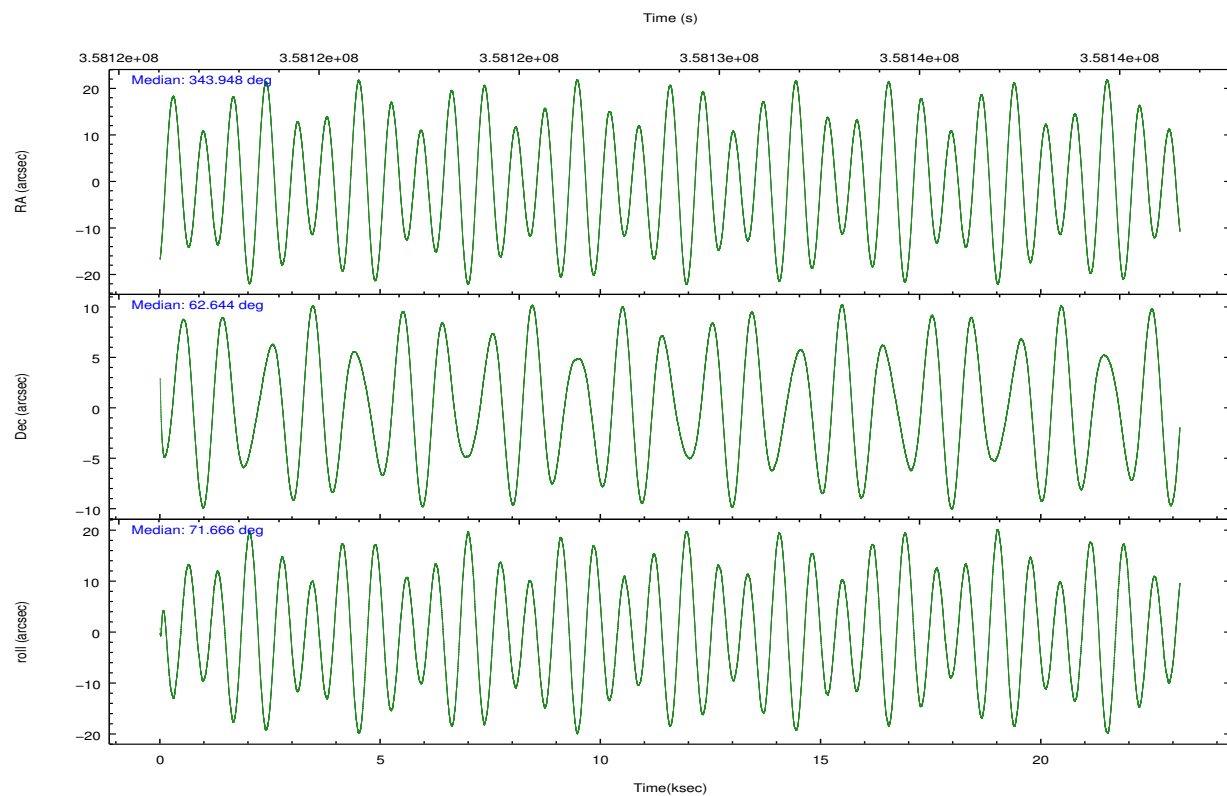
	ccd 0	ccd 1	ccd 2	ccd 3	ccd 6	ccd 7		ccd 0	ccd 1	ccd 2	ccd 3	ccd 6	ccd 7
level 1 events	200759	196373	215733	212483	217159	242779	grade 0 events	14687	9384	10964	10777	8044	10989
rejected events	171635	172888	191516	188984	195579	135225		7%	4%	5%	5%	3%	4%
rejected %	85%	88%	88%	88%	90%	55%	grade 1 events	176	116	133	157	117	300
								0%	0%	0%	0%	0%	0%
							grade 2 events	6183	5583	5522	4933	5119	23545
								3%	2%	2%	2%	2%	9%
							grade 3 events	2639	2451	2337	2294	2389	10420
								1%	1%	1%	1%	1%	4%
							grade 4 events	2420	2529	2414	2355	2308	10258
								1%	1%	1%	1%	1%	4%
							grade 5 events	7483	8221	7137	8710	8797	25250
								3%	4%	3%	4%	4%	10%
							grade 6 events	4297	4788	4060	4170	4828	57941
								2%	2%	1%	1%	2%	23%
							grade 7 events	162874	163301	183166	179087	185557	104076
								81%	83%	84%	84%	85%	42%

2.2 Compared Parameters

Parameter	Planned	Actual	Parameter	Planned	Actual
Instrument	ACIS	ACIS	Obspar format version number	7	7
Detector	ACIS-012367	ACIS-012367	Obspar file type	PREDICTED	ACTUAL
Grating	NONE	NONE	Obspar update status	NONE	UPDATED
Data mode	VFAINT	VFAINT	CCD I0 on	Y	Y
Observation mode	POINTING	POINTING	CCD I1 on	Y	Y
[deg] Pointing RA	343.960562	343.9482655718257	CCD I2 on	Y	Y
[deg] Pointing Dec	62.617369	62.64426139788219	CCD I3 on	Y	Y
[deg] Pointing Roll	71.455252	71.67484632754469	CCD S0 on	N	N
[mm] SIM focus pos	-0.782348	-0.7809083437167272	CCD S1 on	N	N
[mm] SIM defocus	0	0.001439871863259334	CCD S2 on	O1	Y
[mm] SIM translation stage pos	-233.592463	-233.5874344608287	CCD S3 on	O2	Y
[mm] SIM translation stage offset	0	-0.005018542100998502	CCD S4 on	N	N
[s] Observation start time (MET)	358117343.184000	358115682.82935	CCD S5 on	N	N
Observation start date	2009-05-07T21:01:17	2009-05-07T20:34:42	Number of optional ACIS chips dropped	0	0
[s] Observation end time (MET)	358140343.184000	358140567.78059	On-chip summing requested	N	N
Observation end date	2009-05-08T03:24:37	2009-05-08T03:29:27	Subarray requested	NONE	NONE
Read mode	TIMED	TIMED	Alternating exposures requested	N	N
			[s] Primary exposure time	0.000000	3.2

2.3 Aspect



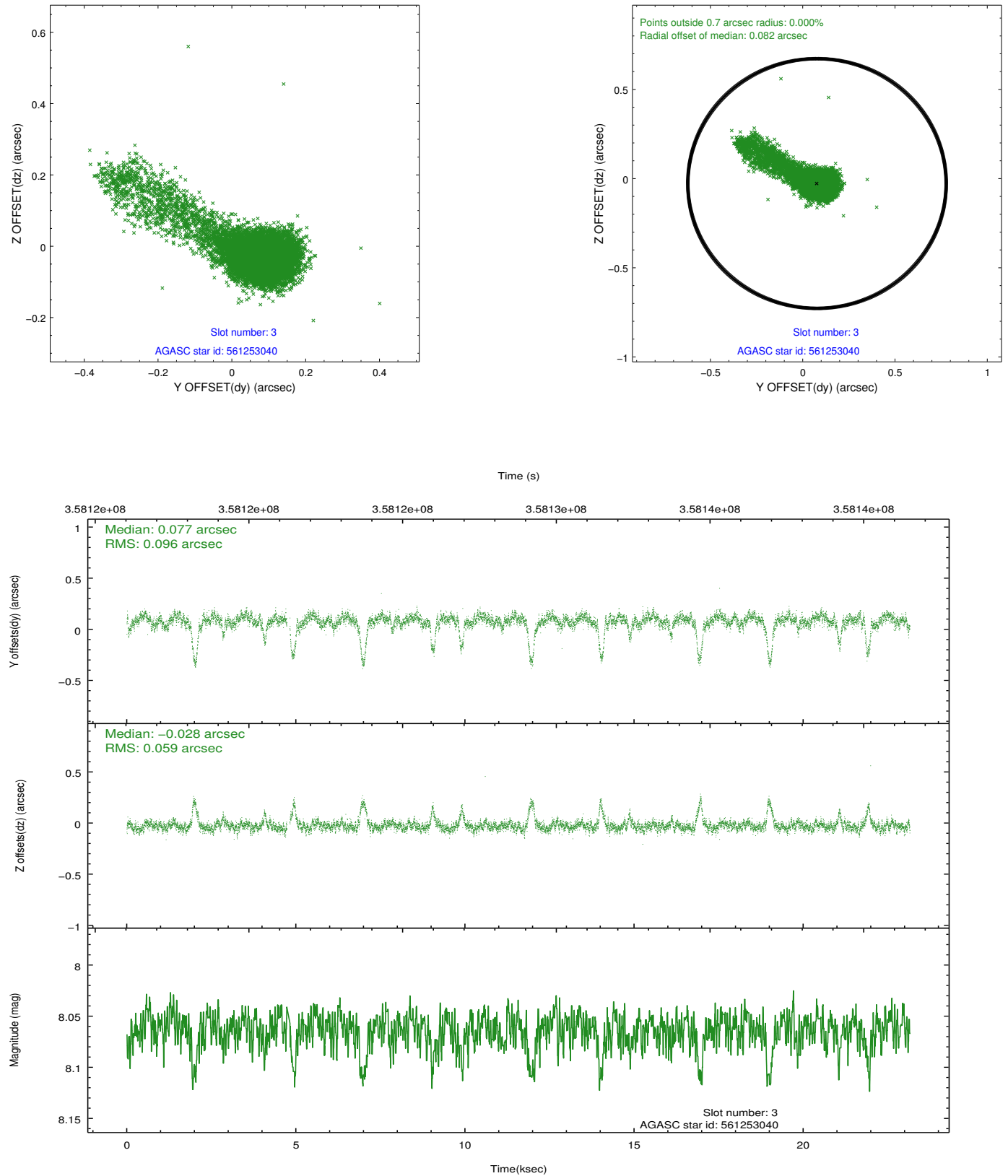


Slot Statistics

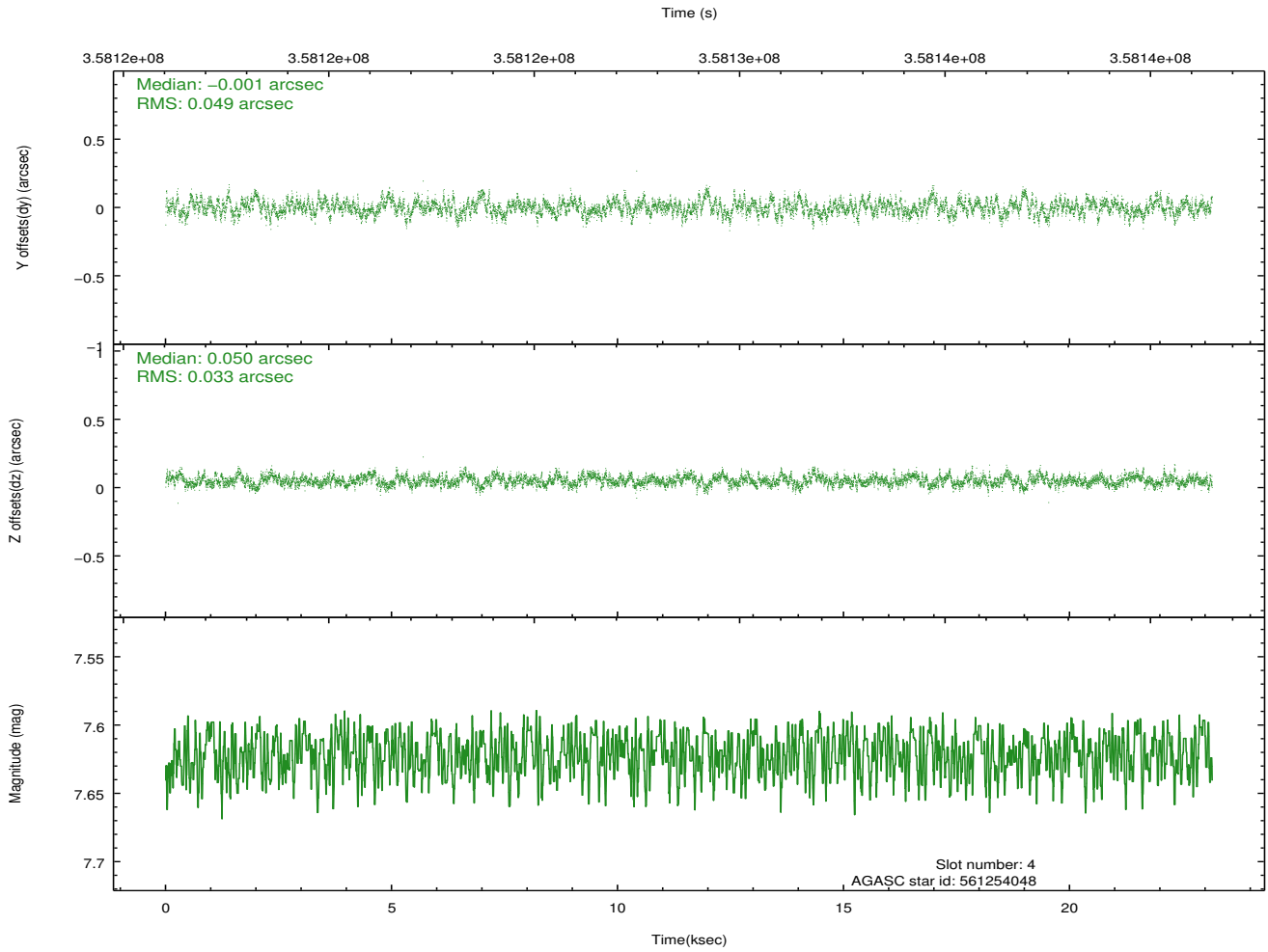
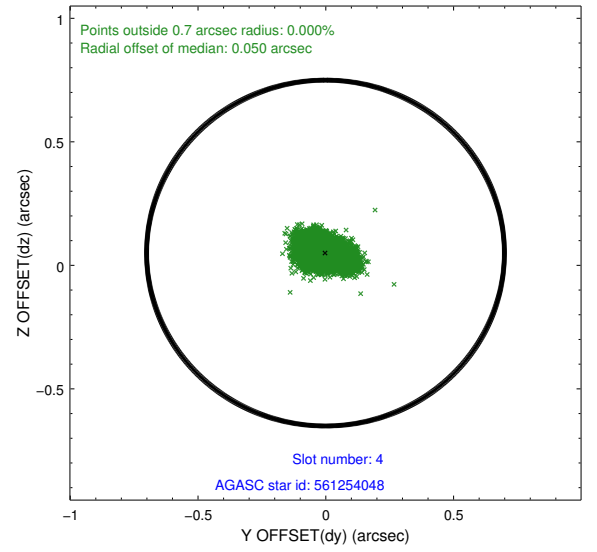
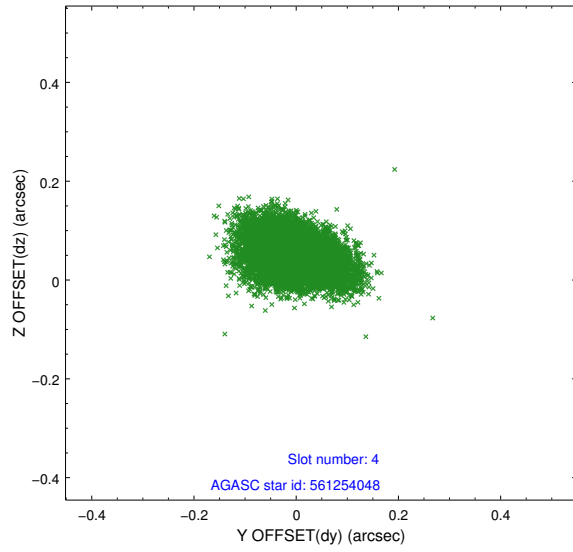
slot	status	id	mag	n_pts	med_dy	med_dz	dr1	dr2	ra	dec	mean_y	mean_z
0	FID	ACIS-I-1	7.02	5647	0.010	-0.099	0.008	0.014	0.000000	0.000000	924.76	-840.32
1	FID	ACIS-I-4	6.95	5644	0.135	0.088	0.008	0.013	0.000000	0.000000	2144.98	1059.61
2	FID	ACIS-I-5	7.00	5647	-0.243	0.082	0.007	0.013	0.000000	0.000000	-1823.33	1057.58
3	GUIDE	561253040	8.06	11245	0.077	-0.028	0.068	0.292	343.127313	62.440534	-1036.27	1116.15
4	GUIDE	561254048	7.62	11294	-0.001	0.050	0.062	0.106	344.665806	63.077158	1941.20	-560.83
5	GUIDE	561255392	8.24	11291	-0.011	0.048	0.072	0.121	345.299730	62.941959	1827.69	-1699.73
6	GUIDE	561256368	8.10	11289	0.064	0.187	0.066	0.118	343.926918	62.306341	-1078.84	-302.72
7	GUIDE	561255672	6.68	11293	-0.112	-0.268	0.078	0.115	342.872792	62.972182	658.70	2097.79

2.4 Star Slots

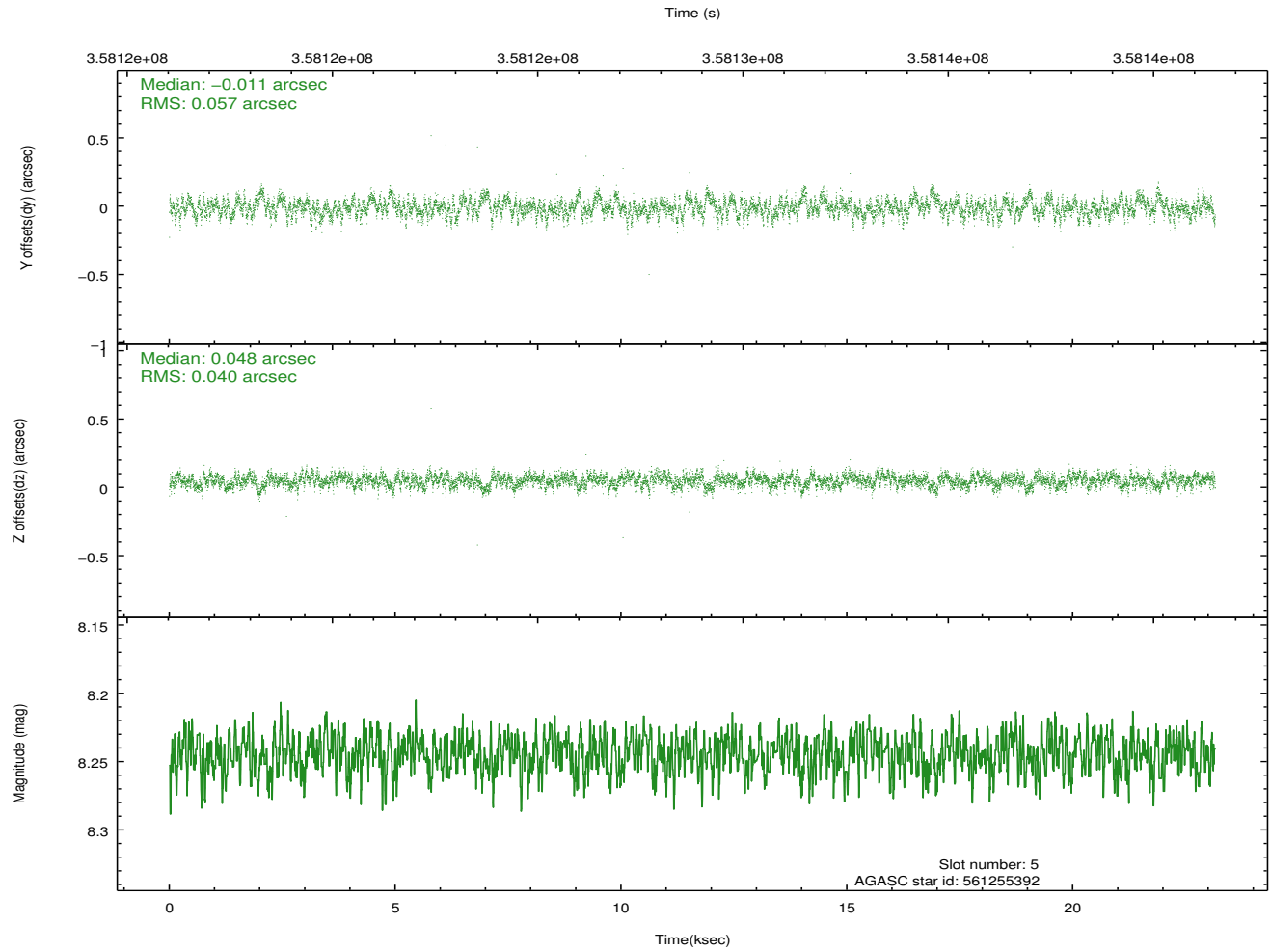
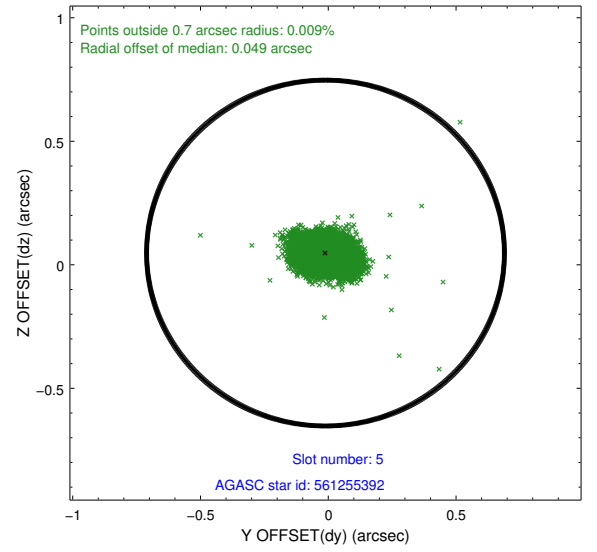
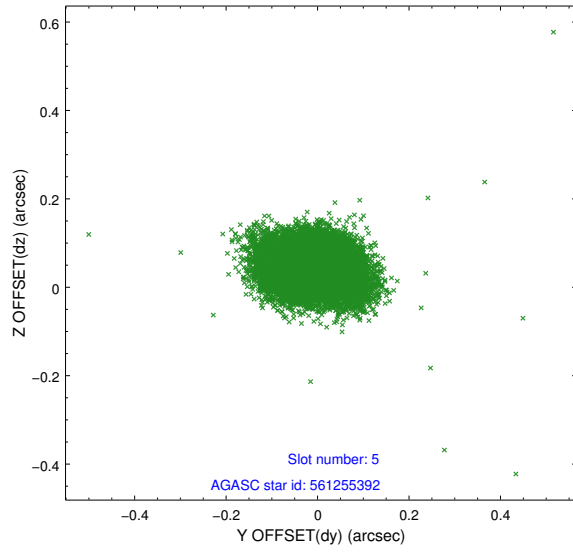
2.4.1 Slot 3



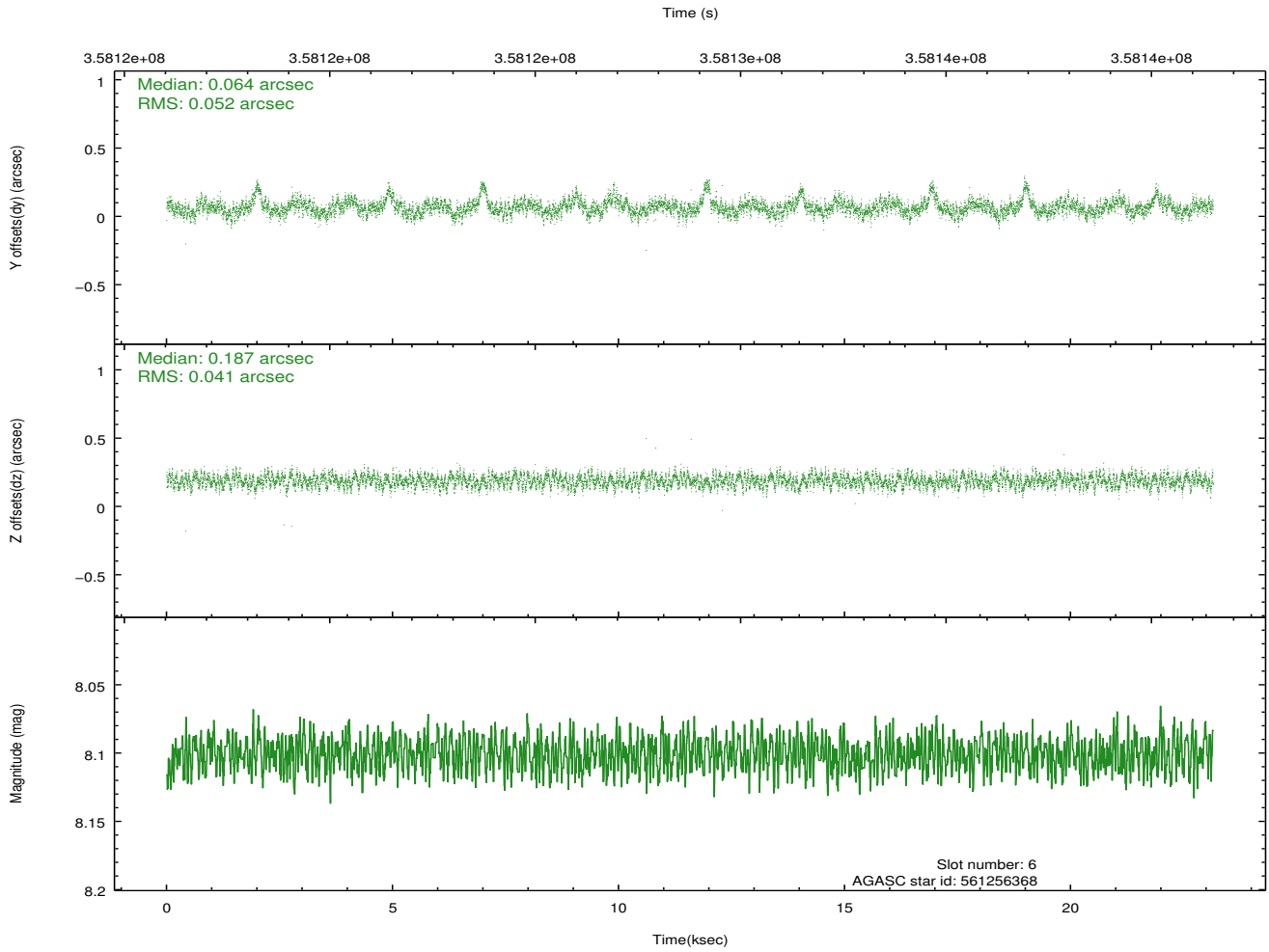
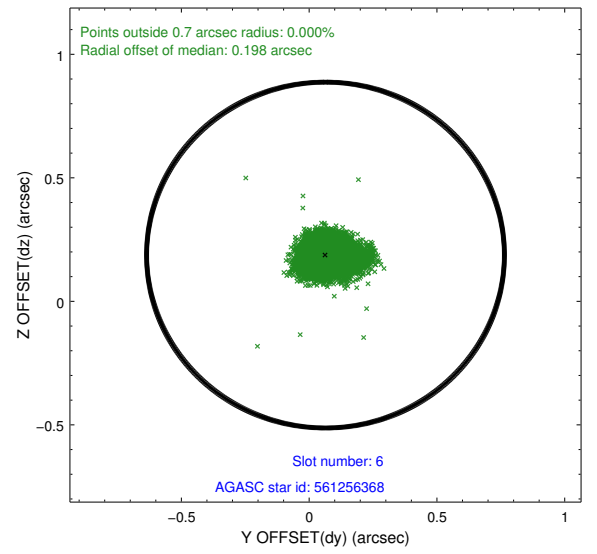
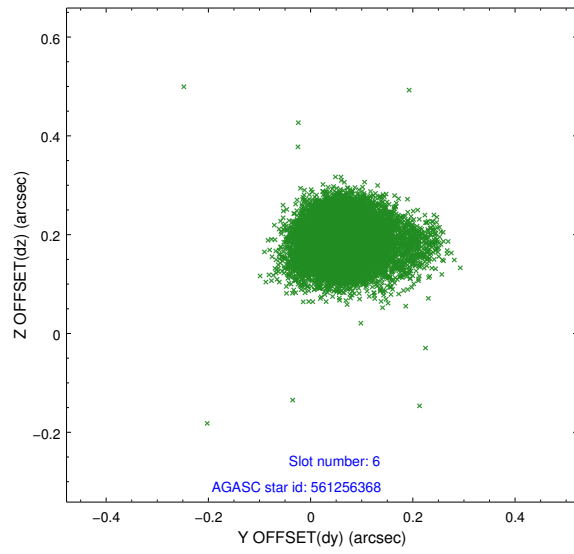
2.4.2 Slot 4



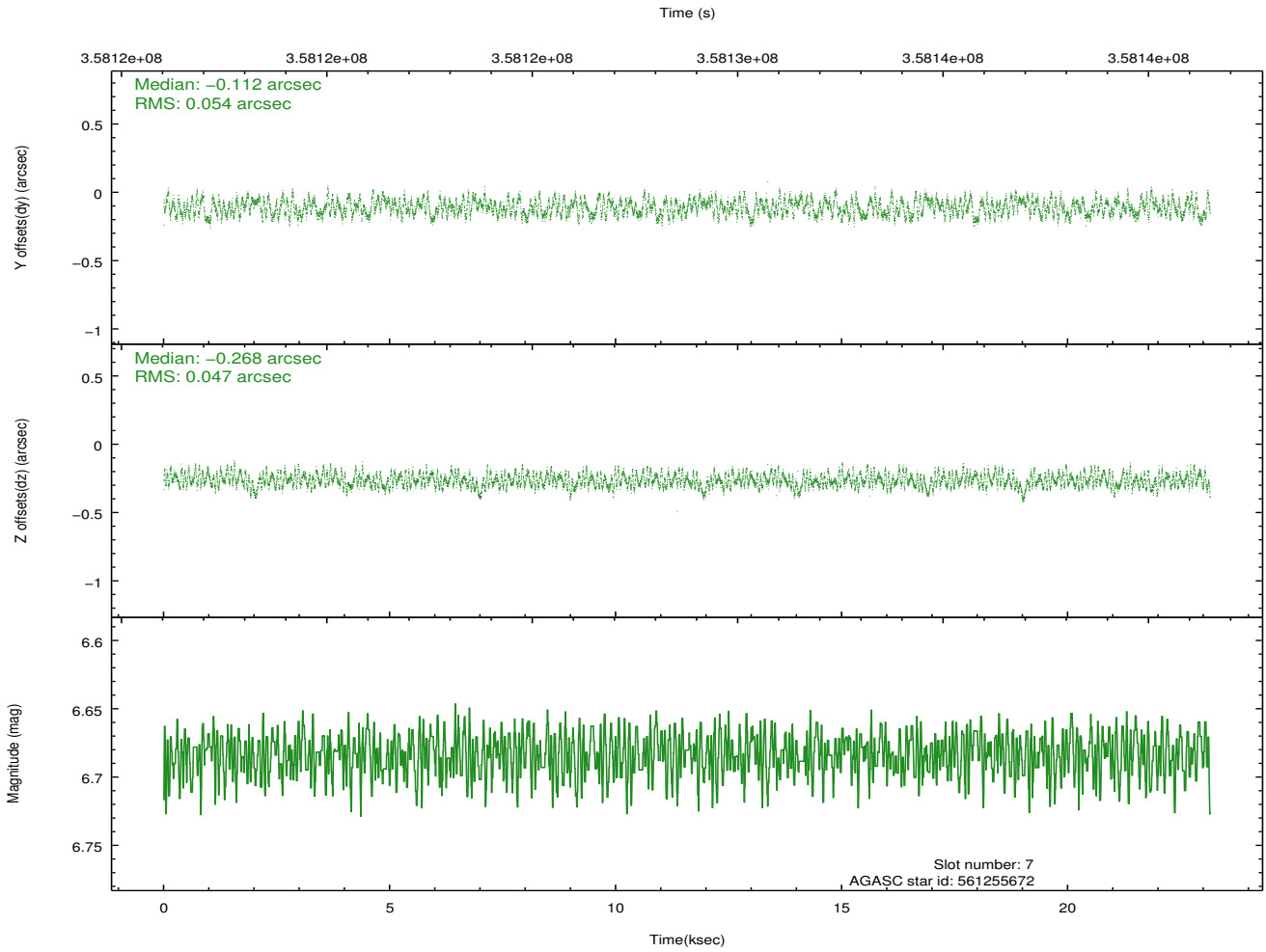
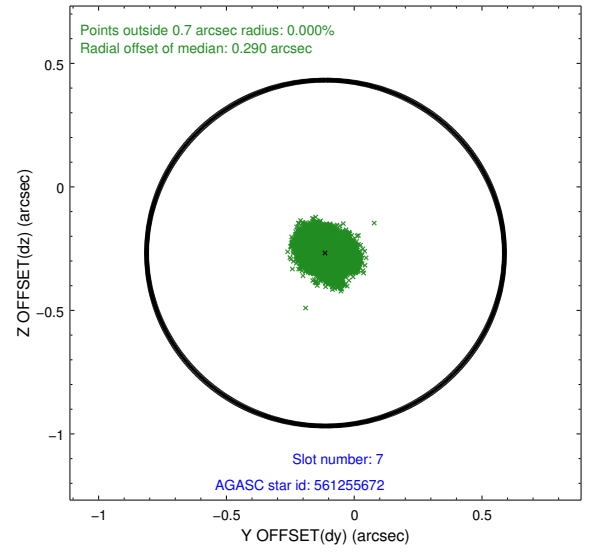
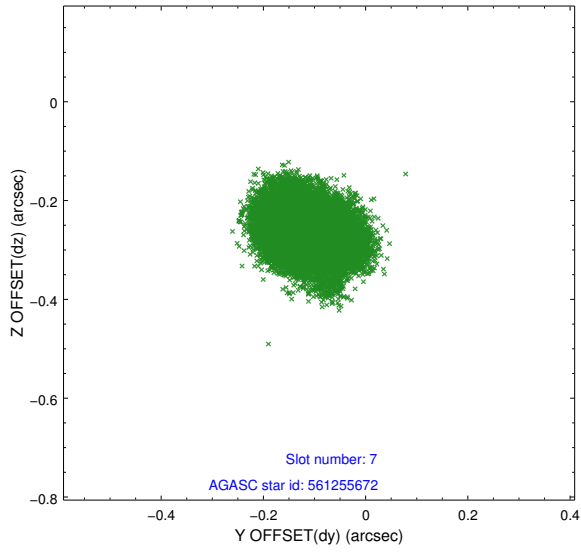
2.4.3 Slot 5



2.4.4 Slot 6

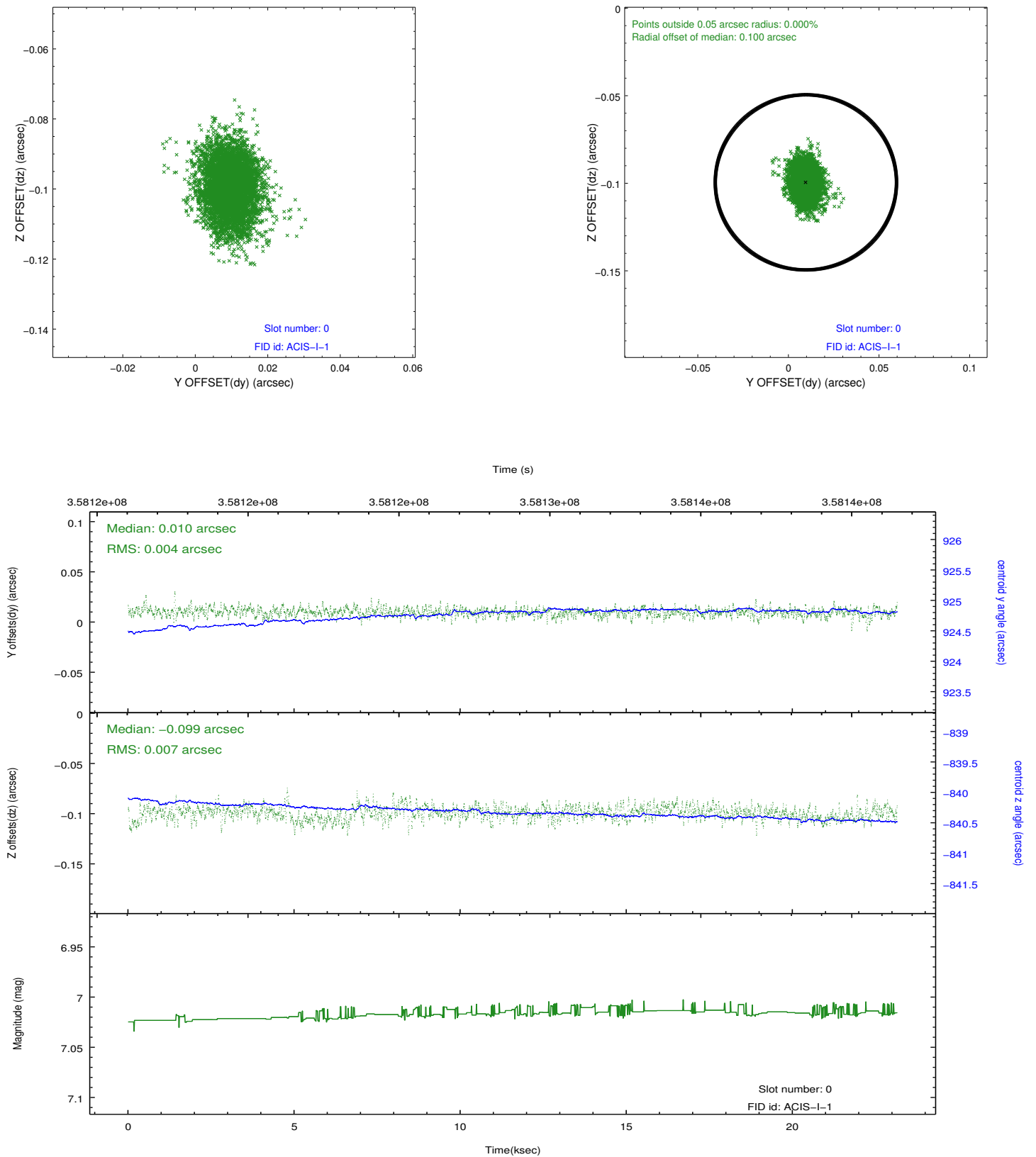


2.4.5 Slot 7

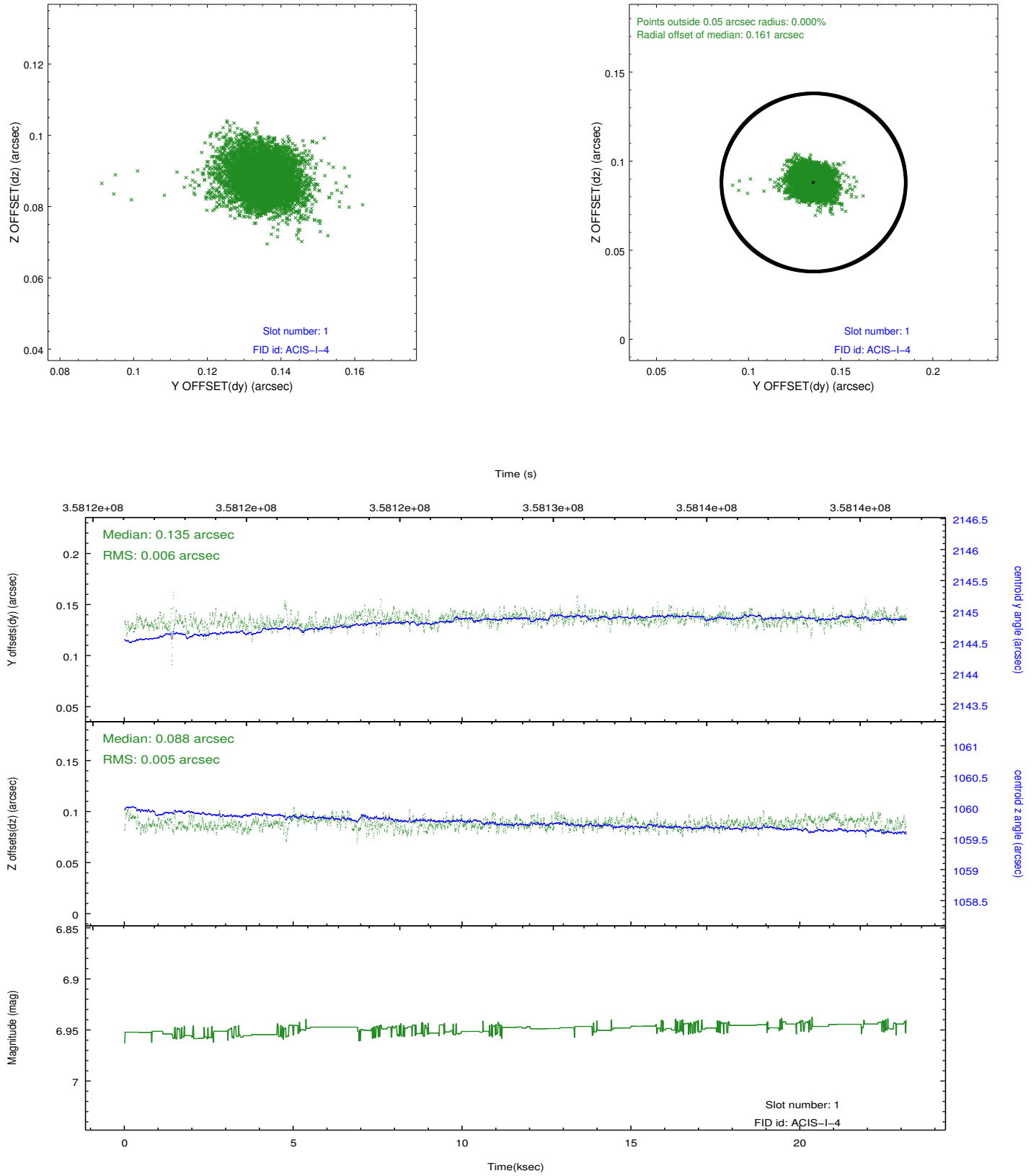


2.5 FID Slots

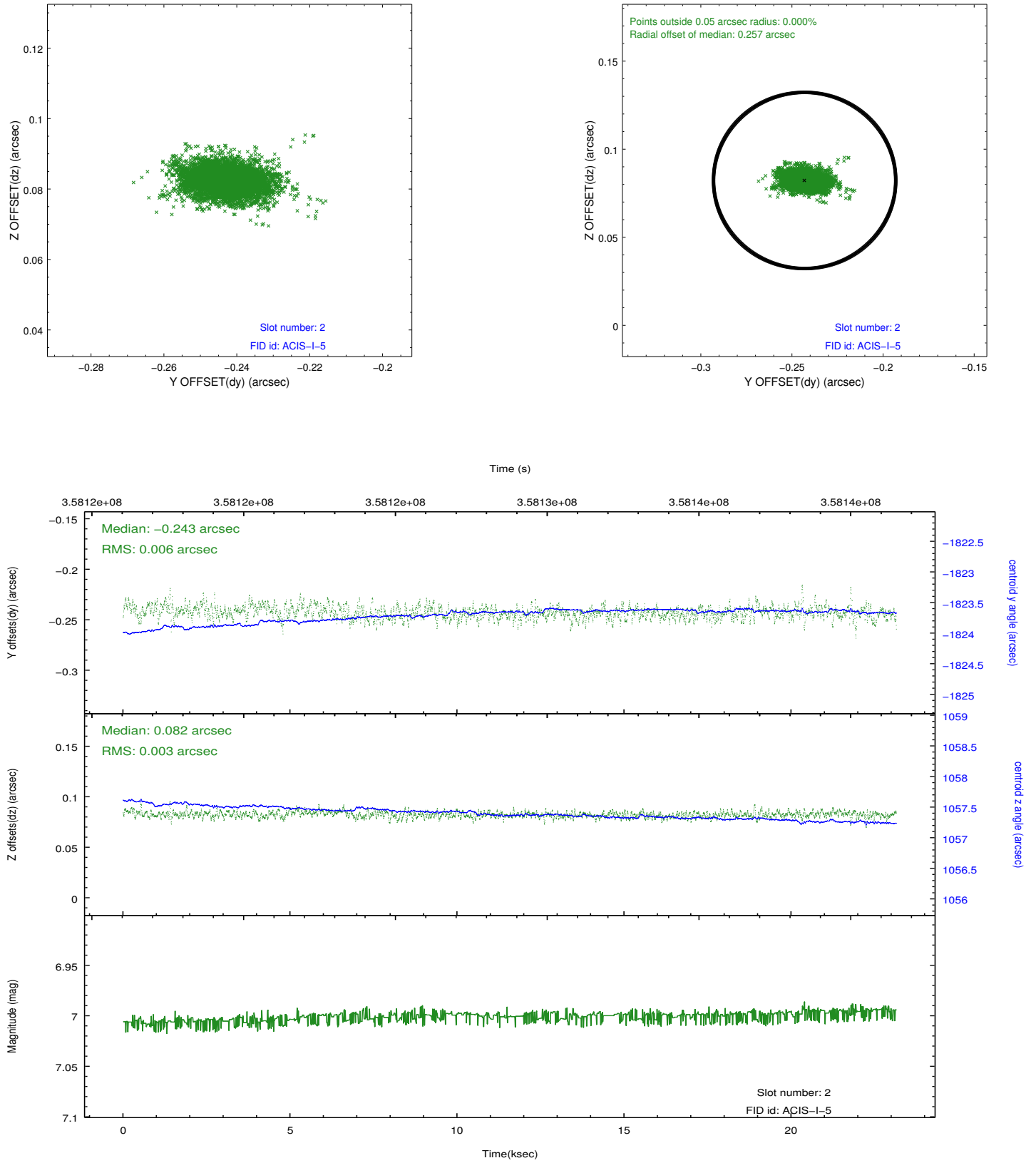
2.5.1 Slot 0



2.5.2 Slot 1



2.5.3 Slot 2



A Summary

A.1 Status

V&V Scientist	Jen Lauer
V&V Date (YYYY-MM-DD)	2012.06.11
V&V Edition	1
V&V Disposition and Status	OK
V&V Charge Time	23.1391179

A.2 Comments